

Unocal Oil & Gas Division  
Unocal Corporation  
3300 North Butler Avenue  
Suite 200  
Farmington, New Mexico 87401  
Telephone (505) 326-7600  
Fax: (505) 326-6145



OIL CONSERVATION DIVISION  
RECEIVED

'94 JAN 10 AM 8 42

January 7, 1994

**CERTIFIED RETURN RECEIPT REQUESTED**

Farmington District

New Mexico Oil Conservation Division  
Attn: Mr. William J. LeMay  
P.O. Box 2088  
Santa Fe, New Mexico 87504-2088

New Mexico Oil Conservation Division  
Attn: Mr. Frank Chavez  
1000 Rio Brazos Road  
Aztec, New Mexico 87410

Dear Sirs:

Union Oil Company of California (UNOCAL) requests permission to downhole commingle production from the Blanco Mesaverde and Basin Dakota formations in the following well:

Rincon Unit No. 127  
1190' FNL, 890' FEL  
Section 28, T27N, R6W  
Rio Arriba County, New Mexico

As provided by Order No. R-9893, administrative approval may be granted without notice and hearing.

As required for an exception to rule 303-A, the following information is attached:

1. An acreage dedication plat showing offset lease ownership.
2. A Form C-116 showing current productivity from each zone.
3. A wellbore diagram with completion detail.
4. A bottomhole pressure from each zone and a calculated adjustment to a common datum.
5. Gas analyses from each zone.
6. An allocation formula for commingled production.
7. A copy of the notification letter sent to all offset operators and the Bureau of Land Management.

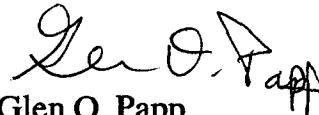
The Blanco Mesaverde formation is currently marginally economic. Commingling will allow for better lift of liquids production and benefits from compression.

Both zones produce essentially dry gas. Therefore, the respective formation fluids are compatible. Also, no crossflow will occur between the commingled zones.

If you have any questions, please contact Dana Delventhal at (505)326-7600. Thank you for your consideration in this matter.

Sincerely,

Union Oil Company of California  
dba UNOCAL

A handwritten signature in black ink, appearing to read "Glen O. Papp". The signature is fluid and cursive, with the last name "Papp" being more prominent.

Glen O. Papp  
Field Superintendent

Attachments

GOP/DLD/df

# OFFSET LEASE OWNERSHIP

R 6 W

20	21	22
29	<div><div>RINCON UNIT #127</div><div>28</div></div>	27
32	<div><div>CAULKINS 3547</div><div>33</div></div>	<div><div>EL PASO SF079210</div><div>34</div></div> <div><div>CAULKINS 3547</div></div>

T 27 N

State of New Mexico  
Energy, Minerals and Natural Resources Department

Form C-116  
Revised 1/1/89

# OIL CONSERVATION DIVISION

P.O. Box 2088  
Santa Fe, New Mexico 87504-2088

Submit 2 copies to Appropriate  
District Office.

DISTRICT I  
P.O. Box 1980, Hobbs, NM 88240  
DISTRICT II  
P.O. Drawer DD, Artesia, NM 88210  
DISTRICT III  
1000 Rio Brazos Rd., Aztec, NM 87410

## GAS - OIL RATIO TEST

Operator UNION OIL COMPANY OF CALIFORNIA		Pool BLANCO MESAVERDE/BASIN DAKOTA		County RIO ARRIBA										
Address 3300 NORTH BUTLER, SUITE 200, FARMINGTON, NEW MEXICO 87401		TYPE OF TEST - (X)		Completion <input checked="" type="checkbox"/> Scheduled <input type="checkbox"/>										
LEASE NAME	WELL NO.	LOCATION			DATE OF TEST	CHOKE SIZE	TBG. PRESS.	DAILY ALLOW-ABLE	LENGTH OF TEST HOURS	PROD. DURING TEST			GAS - OIL RATIO CU.FT/BBL.	
		U	S	T						R	WATER BBL.S.	GRAV. OIL		OIL BBL.S.
RINCON UNIT	127	A	28	27N	6W	11/93	F 64/64"	285						
BLANCO MESAVERDE						11/93	F 64/64"	291	24	-0-	-0-	40	--	
BASIN DAKOTA						11/93	F 64/64"		24	-0-	1.5	165	110,000	

I hereby certify that the above information is true and complete to the best of my knowledge and belief.

Signature  
GLEN O. PAPP

Printed name and title  
JANUARY 7, 1994  
Date  
(505) 326-7600  
Telephone No.

### Instructions:

During gas-oil ratio test, each well shall be produced at a rate not exceeding the top unit allowable for the pool in which well is located by more than 25 percent. Operator is encouraged to take advantage of this 25 percent tolerance in order that well can be assigned increased allowables when authorized by the Division.  
Gas volumes must be reported in MCF measured at a pressure base of 15.025 psia and a temperature of 60° F.  
Specific gravity base will be 0.60.  
Report casing pressure in lieu of tubing pressure for any well producing through casing.  
(See Rule 301, Rule 1116 & appropriate pool rules.)

# RINCON UNIT #127

1190' FNL, 890' FEL  
SEC. 28, T27N, R6W

13 3/8", 48#, H-40 CSA 325'

CMT W/ 230 SX  
TOC AT SURFACE.

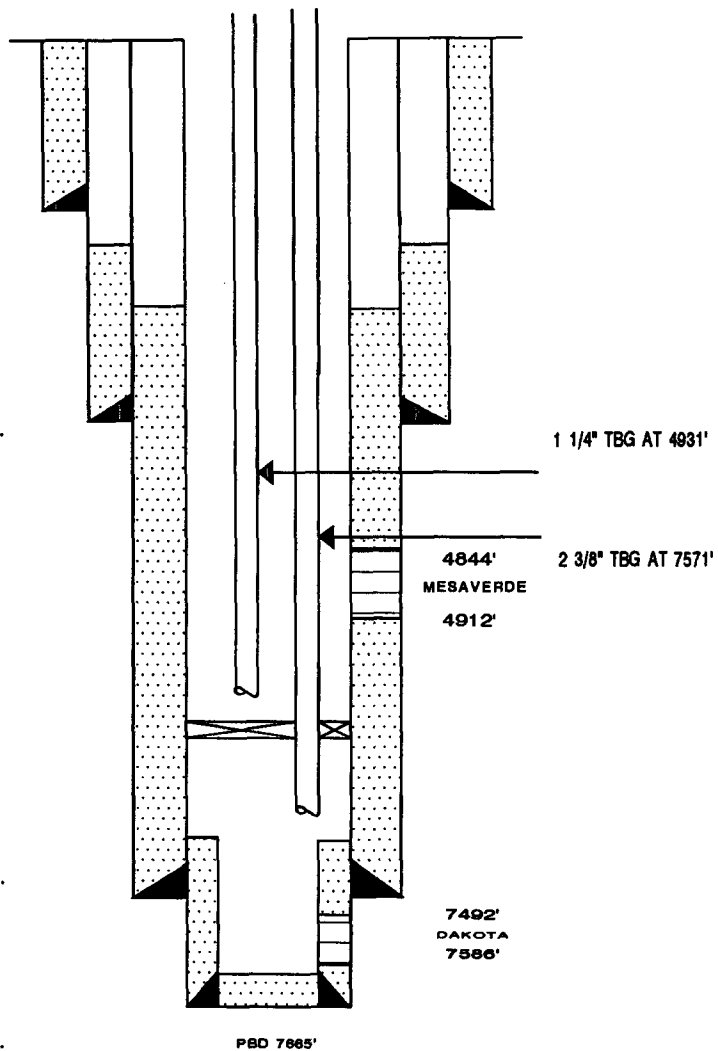
9 5/8", 36#, J-55  
and 40# N-80  
CASING SET AT 3353'

CMT W/ 170 SX  
TOC AT 2380' BY TEMP SURV.

BAKER 'D' PKR AT 6880'

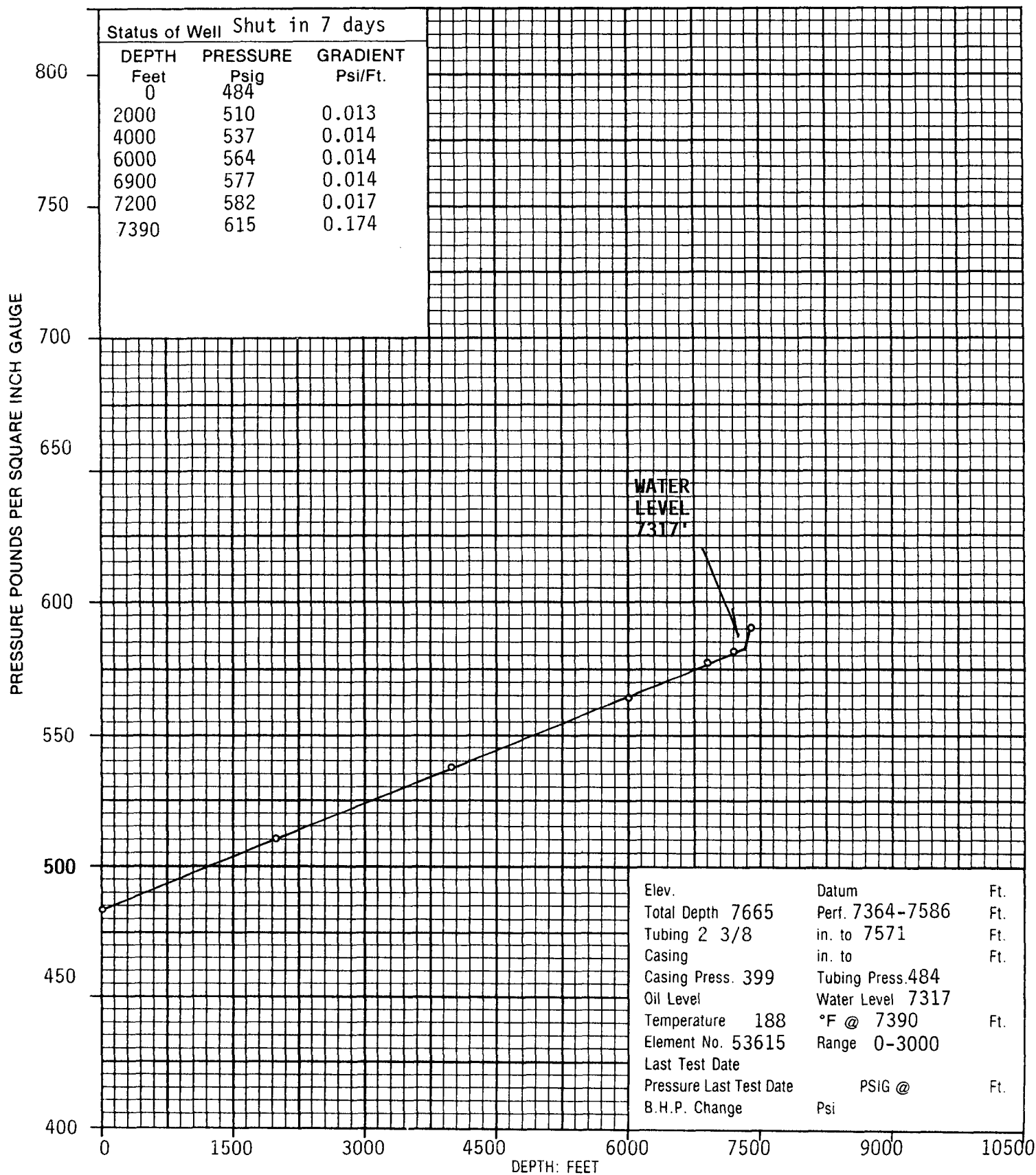
7", 23# N-80 AND J-55  
CASING SET AT 7283'  
CMT W/ 970 SX  
TOC AT 2100' BY TEMP SURV.

5", 15#, J-55 SET FROM  
7217' TO 7698'.  
CMT W/ 100 SX.  
TOC AT 7217' BY TEMP SURV.





Company UNOCAL Lease RINCON UNIT Well No. 127  
Field SAN JUAN BASIN County RIO ARriba State N. M.  
Formation DAKOTA-MESA VERDE Test Date 9-21-93





Page 8 of 19

File 2-25399-FL&P

COMPANY UNOCAL LEASE RINCON UNIT WELL NO. 127  
 FIELD MESA VERDE COUNTY RIO ARRIBA STATE NEW MEXICO  
 FORMATION MESA VERDE TEST DATE 9-21-93 TIME

### FLUID LEVEL REPORT

#### WELL DATA

Elevation  feet Datum  feet subsea Total Depth  feet  
 Perforations 4844-4912 feet Test Depth 4878(MP) feet Packer 6880 feet  
 Tubing Size 1 1/4 in. to 4931 feet Tubing Pressure 399 psig  
 Casing Size  in. to  feet Casing Pressure 399 psig  
 Oil Level  feet Water Level  feet Average Tubing Joint 31.5 feet  
 Well Makes 0 % Oil, 100 % Water Atmospheric Temperature  °F  
 Status of Well SHUT in 7 days Operator JR-SB Unit No. P-204

#### PRESSURE DATA

	Feet	Gradient Psig/Ft.	Psi
Casing Pressure			399
GAS			
Average Tubing Joints <u>31.5</u> ft. Joints to Fluid <u>150</u> Feet to Fluid.	4725	0.010	47
OIL			
Fluid Column Length <u></u> ft. % Oil <u></u> Oil Column Length.			
WATER			
Fluid Column Length <u>153</u> Ft. % Water <u>100</u> Water Column Length.	153	0.430	66

#### PRESSURE AT TEST DEPTH

4878                      512

Calculated subsurface pressure at datum depth of 4878 feet subsea is 512 psig  
 Last Test Date  Pressure Last Test  psig BHP Change  psi  
 Remarks:

RINCON UNIT NO. 127

After a 7 day SI period:

$$\text{Mesaverde BHP} = 512 \text{ psi @ } 4878'$$

$$\text{Dakota BHP} = 615 \text{ psi @ } 7390'$$

$$\text{Gas Gradient} = 0.014 \text{ psi/ft}$$

Adjusting to a common datum of 4878':

$$\text{Mesaverde BHP} = 512 \text{ psi}$$

$$\text{Dakota BHP} = 615 - [(0.014)(7390 - 4878)] = 580 \text{ psi}$$

Therefore the reservoir pressures fall within the 50% requirement.



EL PASO NATURAL GAS COMPANY  
VOLUME ACCOUNTING DEPARTMENT  
MEASUREMENT DIVISION  
POST OFFICE BOX 1492  
EL PASO, TEXAS 79978  
PHONE: (915) 541-5267

DATE 6/08/92

CHROMATOGRAPHIC GAS ANALYSIS REPORT

MAILEE  
94100

UNION OIL CO. OF CALIFORNIA  
ATTN: MIDLAND PRODUCTION DEPT.  
P.O. BOX 671  
MIDLAND, TEXAS 79702

METER NUMBER 72595 - RINCON UNIT #127 MV  
OPERATOR 9165 - UNION OIL CO OF CALIF

ANALYSIS DATE	5/13/92	TYPE CODE	2 - ACTUAL
SAMPLE DATE	5/12/92	H2S GRAINS	0
EFFECTIVE DATE	6/01/92	LOCATION	F - FARMINGTON
EFFECTIVE FOR	3 MONTHS		

COMPONENTS	NORMALIZED MOL %	GPM
CO2	1.02	.000
H2S	.00	.000
N2	.39	.000
METHANE	81.78	.000
ETHANE	10.52	2.814
PROPANE	4.22	1.183
ISO-BUTANE	.60	.196
NORM-BUTANE	.84	.265
ISO-PENTANE	.28	.102
NORM-PENTANE	.19	.069
HEXANE PLUS	<u>.16</u>	<u>.070</u>
	100.00	4.679

SPECIFIC GRAVITY .694

MIXTURE HEATING VALUE  
(BTU @ 14.73 DRY) 1199

RATIO OF SPECIFIC HEATS .000

NO TEST SECURED FOR H2S CONTENT

EL PASO NATURAL GAS COMPANY  
VOLUME ACCOUNTING DEPARTMENT  
MEASUREMENT DIVISION  
POST OFFICE BOX 1492  
EL PASO, TEXAS 79978  
PHONE: (915) 541-5267

DATE 12/08/92

CHROMATOGRAPHIC GAS ANALYSIS REPORT

MAILEE

94100 UNION OIL CO. OF CALIFORNIA  
ATTN: SHARON L. MILLER  
P.O. BOX 671  
MIDLAND, TEXAS 79702

METER NUMBER 72596 - RINCON UNIT #127 DK  
OPERATOR 9165 - UNION OIL CO OF CALIF

ANALYSIS DATE 10/15/92      TYPE CODE 2 - ACTUAL  
SAMPLE DATE 10/13/92      H2S GRAINS 0  
EFFECTIVE DATE 11/01/92      LOCATION F - FARMINGTON  
EFFECTIVE FOR 6 MONTHS

COMPONENTS	NORMALIZED MOL %	GPM
CO2	1.35	.000
H2S	.00	.000
N2	.27	.000
METHANE	85.97	.000
ETHANE	7.76	2.076
PROPANE	2.71	.747
ISO-BUTANE	.59	.193
NORM-BUTANE	.68	.214
ISO-PENTANE	.30	.110
NORM-PENTANE	.16	.058
HEXANE PLUS	.21	.092
	100.00	3.490

SPECIFIC GRAVITY .667

MIXTURE HEATING VALUE  
(BTU @ 14.73 DRY) 1150

RATIO OF SPECIFIC HEATS .000

NO TEST SECURED FOR H2S CONTENT

RINCON UNIT NO. 127  
ALLOCATION FORMULA

GAS PRODUCTION:

Mesaverde Rate            40 MCFD

Dakota Rate                165 MCFD

Total Rate                205 MCFD

Therefore,

Mesaverde            20%

Dakota                80%

OIL PRODUCTION:

Mesaverde Rate            0.0 BOPD

Dakota Rate                1.5 BOPD

Total Rate                1.5 BOPD

Therefore,

Mesaverde            0%

Dakota                100%

Unocal Oil & Gas Division  
Unocal Corporation  
3300 North Butler Avenue  
Suite 200  
Farmington, New Mexico 87401  
Telephone (505) 326-7600  
Fax: (505) 326-6145

**UNOCAL** 76

January 7, 1994

Farmington District

United States Department of the Interior  
Bureau of Land Management  
1235 La Plata Highway  
Farmington, New Mexico 87401

Dear Sirs:

Union Oil Company of California (UNOCAL) has requested permission from the New Mexico Oil Conservation Division to downhole commingle production from the Blanco Mesaverde and Basin Dakota formations in the following well:

Rincon Unit No. 127  
1190' FNL, 890' FEL  
Section 28, T27N, R6W  
Rio Arriba County, New Mexico

If you have any objections to this proposal, please notify the NMOCD within twenty (20) days. If you have any questions about this application, please contact Dana Delventhal at (505)326-7600.

Sincerely,

Union Oil Company of California  
dba UNOCAL



Glen O. Papp  
Field Superintendent

GOP/DLD/df

Unocal Oil & Gas Division  
Unocal Corporation  
3300 North Butler Avenue  
Suite 200  
Farmington, New Mexico 87401  
Telephone (505) 326-7600  
Fax: (505) 326-6145



January 7, 1994

Farmington District

Meridian Oil Production Inc.  
P.O. Box 4289  
Farmington, New Mexico 87499

Dear Sirs:

Union Oil Company of California (UNOCAL) has requested permission from the New Mexico Oil Conservation Division to downhole commingle production from the Blanco Mesaverde and Basin Dakota formations in the following well:

Rincon Unit No. 127  
1190' FNL, 890' FEL  
Section 28, T27N, R6W  
Rio Arriba County, New Mexico

If you have any objections to this proposal, please notify the NMOCD within twenty (20) days. If you have any questions about this application, please contact Dana Delventhal at (505)326-7600.

Sincerely,

Union Oil Company of California  
dba UNOCAL

A handwritten signature in dark ink, appearing to read "Glen O. Papp".

Glen O. Papp  
Field Superintendent

GOP/DLD/df

Unocal Oil & Gas Division  
Unocal Corporation  
3300 North Butler Avenue  
Suite 200  
Farmington, New Mexico 87401  
Telephone (505) 326-7600  
Fax: (505) 326-6145



January 7, 1994

Farmington District

Caulkins Oil Company  
310 North First  
Bloomfield, New Mexico 87413

Dear Sirs:

Union Oil Company of California (UNOCAL) has requested permission from the New Mexico Oil Conservation Division to downhole commingle production from the Blanco Mesaverde and Basin Dakota formations in the following well:

Rincon Unit No. 127  
1190' FNL, 890' FEL  
Section 28, T27N, R6W  
Rio Arriba County, New Mexico

If you have any objections to this proposal, please notify the NMOCD within twenty (20) days. If you have any questions about this application, please contact Dana Delventhal at (505)326-7600.

Sincerely,

Union Oil Company of California  
dba UNOCAL

A handwritten signature in black ink, appearing to read "Glen O. Papp".

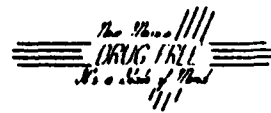
Glen O. Papp  
Field Superintendent

GOP/DLD/df



RECEIVED  
JAN 25 AM 9 34  
OIL CONSERVATION DIVISION

STATE OF NEW MEXICO  
ENERGY, MINERALS and NATURAL RESOURCES DIVISION  
OIL CONSERVATION DIVISION  
AZTEC DISTRICT OFFICE



BRUCE KING  
GOVERNOR

ANITA LOCKWOOD  
CABINET SECRETARY

1000 RIO BRAZOS ROAD  
AZTEC, NEW MEXICO 87410  
(505) 334-6178

Date: 1/22/94

Oil Conservation Division  
P.O. Box 2088  
Santa Fe, NM 87504-2088

RE: Proposed MC \_\_\_\_\_  
Proposed NSL \_\_\_\_\_  
Proposed WFX \_\_\_\_\_  
Proposed NSP \_\_\_\_\_

Proposed DHC ☒ \_\_\_\_\_  
Proposed SWD \_\_\_\_\_  
Proposed PMX \_\_\_\_\_  
Proposed DD \_\_\_\_\_

Gentlemen:

I have examined the application received on 1/10/94  
for the Unocal Pineau Unit # 127  
OPERATOR LEASE & WELL NO.

A-28-27N-6W and my recommendations are as follows:  
UL-S-T-R

Approve  
\_\_\_\_\_  
\_\_\_\_\_  
\_\_\_\_\_  
\_\_\_\_\_

Yours truly,

35.8