

05/30/13 DATE IN	6/19 SUSPENSE	DB ENGINEER	DB-03-2013 LOGGED IN	PC TYPE	APP NO. PAXK1315442370
---------------------	------------------	----------------	-------------------------	------------	------------------------

ABOVE THIS LINE FOR DIVISION USE ONLY

NEW MEXICO OIL CONSERVATION DIVISION

Engineering Bureau -

1220 South St. Francis Drive, Santa Fe, NM 87505



ADMINISTRATIVE APPLICATION CHECKLIST

THIS CHECKLIST IS MANDATORY FOR ALL ADMINISTRATIVE APPLICATIONS FOR EXCEPTIONS TO DIVISION RULES AND REGULATIONS WHICH REQUIRE PROCESSING AT THE DIVISION LEVEL IN SANTA FE

Application Acronyms:

[NSL-Non-Standard Location] [NSP-Non-Standard Proration Unit] [SD-Simultaneous Dedication]
 [DHC-Downhole Commingling] [CTB-Lease Commingling] [PLC-Pool/Lease Commingling]
 [PC-Pool Commingling] [OLS - Off-Lease Storage] [OLM-Off-Lease Measurement]
 [WFX-Waterflood Expansion] [PMX-Pressure Maintenance Expansion]
 [SWD-Salt Water Disposal] [IPI-Injection Pressure Increase]
 [EOR-Qualified Enhanced Oil Recovery Certification] [PPR-Positive Production Response]

[1] TYPE OF APPLICATION - Check Those Which Apply for [A]

[A] Location - Spacing Unit - Simultaneous Dedication

☐ NSL ☐ NSP ☐ SD

30-015-40639 Z

30-015-39103 1H

30-015-40928 S

Check One Only for [B] or [C]

[B] Commingling - Storage - Measurement

☐ DHC ☐ CTB ☐ PLC ☒ PC ☐ OLS ☐ OLM

Razonback Federal

Mack Energy Corp.

[C] Injection - Disposal - Pressure Increase - Enhanced Oil Recovery

☐ WFX ☐ PMX ☐ SWD ☐ IPI ☐ EOR ☐ PPR

[D] Other: Specify _____

[2] NOTIFICATION REQUIRED TO: - Check Those Which Apply, or ☐ Does Not Apply

[A] ☒ Working, Royalty or Overriding Royalty Interest Owners

[B] ☐ Offset Operators, Leaseholders or Surface Owner

[C] ☐ Application is One Which Requires Published Legal Notice

[D] ☒ Notification and/or Concurrent Approval by BLM or SLO
 U.S. Bureau of Land Management - Commissioner of Public Lands, State Land Office

[E] ☐ For all of the above, Proof of Notification or Publication is Attached, and/or,

[F] ☐ Waivers are Attached

[3] SUBMIT ACCURATE AND COMPLETE INFORMATION REQUIRED TO PROCESS THE TYPE OF APPLICATION INDICATED ABOVE.

[4] **CERTIFICATION:** I hereby certify that the information submitted with this application for administrative approval is **accurate** and **complete** to the best of my knowledge. I also understand that no action will be taken on this application until the required information and notifications are submitted to the Division.

Note: Statement must be completed by an individual with managerial and/or supervisory capacity.

Deana Weaver

Print or Type Name

Deana Weaver

Signature

Production Clerk

Title

5.28.13

Date

jerrys@mec.com
 e-mail Address

M E M O

DATE: May 24, 2013
TO: NMOCD
FROM: STACI SANDERS
MACK ENERGY CORPORATION
RE: RAZORBACK FEDERAL LEASE
NMNM-89882
T18S, R31E
SECTION 3: LOTS 3, 4, S/2NW/4
EDDY COUNTY, NEW MEXICO

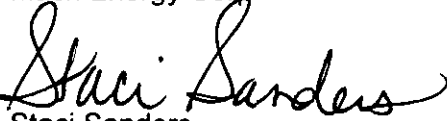
Mack Energy Corporation respectfully requests approval to surface commingle production from our Razorback Federal Lease. The Razorback Federal Lease has production from the Delaware and San Andres formations and we would like to commingle the production at the Tank Battery. Allocation for the oil and gas will be done using periodic well tests at the Tank Battery.

All wells going into the Tank Battery have identical working and revenue interests.

Please do not hesitate to contact me should you require any further information.

Sincerely,

Mack Energy Corporation


Staci Sanders
Land Department

Razorback Federal – Interest Owners

Office of Natural Resources
P.O. Box 25627
Denver, CO 80225-0627

Marathon Oil Company
P.O. Box 2069
Houston, TX 77252-2069

Chase Oil Corporation
P.O. Box 1767
Artesia, NM 88211

Robert C. Chase
P.O. Box 297
Artesia, NM 88211

Ventana Minerals LLC
P.O. Box 359
Artesia, NM 88211

DiaKan Minerals LLC
P.O. Box 693
Artesia, NM 88211

DISTRICT I
1625 N. French Dr., Hobbs, NM 88240
Phone: (575) 393-6161 Fax: (575) 393-0720
DISTRICT II
811 S. First St., Artesia, NM 88210
Phone: (575) 748-1283 Fax: (575) 748-9720
DISTRICT III
1000 Rio Brazos Road, Aztec, NM 87410
Phone: (505) 334-6178 Fax: (505) 334-6170
DISTRICT IV
1220 S. St. Francis Dr., Santa Fe, NM 87505
Phone: (505) 476-3460 Fax: (505) 476-3462

State of New Mexico
Energy, Minerals & Natural Resources Department
OIL CONSERVATION DIVISION
1220 South St. Francis Dr.
Santa Fe, New Mexico 87505

Form C-102
Revised August 1, 2011
Submit one copy to appropriate
District Office

☐ AMENDED REPORT

WELL LOCATION AND ACREAGE DEDICATION PLAT

API Number 30-015-40639	Pool Code 58060	Pool Name Tamano; San Andres
Property Code 38891	Property Name RAZORBACK FEDERAL	Well Number 2
OGRID No. 013837	Operator Name MACK ENERGY CORPORATION	Elevation 3752'

Surface Location

UL or lot No.	Section	Township	Range	Lot Idn	Feet from the	North/South line	Feet from the	East/West line	County
4	3	18-S	31-E		330	NORTH	330	WEST	EDDY

Bottom Hole Location If Different From Surface

UL or lot No.	Section	Township	Range	Lot Idn	Feet from the	North/South line	Feet from the	East/West line	County
Dedicated Acres 40	Joint or Infill	Consolidation Code	Order No.						

NO ALLOWABLE WILL BE ASSIGNED TO THIS COMPLETION UNTIL ALL INTERESTS HAVE BEEN CONSOLIDATED OR A NON-STANDARD UNIT HAS BEEN APPROVED BY THE DIVISION

<p>SEE DETAIL</p> <p>40.05 AC.</p> <p>40.09 AC.</p> <p>40.11 AC.</p> <p>40.15 AC.</p> <p>DETAIL</p> <p>3751.2'</p> <p>3754.4'</p> <p>600'</p> <p>600'</p> <p>3750.1'</p> <p>3755.8'</p> <p>GEODETTIC COORDINATES NAD 27 NME</p> <p>SURFACE LOCATION Y=648800.8 N X=644114.0 E</p> <p>LAT.=32.782767° N LONG.=103.864416° W</p>	<p>OPERATOR CERTIFICATION</p> <p>I hereby certify that the information herein is true and complete to the best of my knowledge and belief, and that this organization either owns a working interest or unleased mineral interest in the land including the proposed bottom hole location or has a right to drill this well at this location pursuant to a contract with an owner of such mineral or working interest, or to a voluntary pooling agreement or a compulsory pooling order heretofore entered by the division.</p> <p><i>Deana Weaver</i> 5.28.13 Signature Date</p> <p>Deana Weaver Printed Name</p> <p>dweaver@mec.com E-mail Address</p> <p>SURVEYOR CERTIFICATION</p> <p>I hereby certify that the well location shown on this plat was plotted from field notes of actual surveys made by me or under my supervision, and that the same is true and correct to the best of my belief.</p> <p>JUNE 5, 2012</p> <p>Date of Survey</p> <p>Signature & Seal of Professional Surveyor: </p> <p>Certificate Number: 3239 </p> <p>AF</p>
------------------------------------------------------------------------------------------------------------------------------------------------------------------------------------------------------------------------------------------------------------------------------------------------------------------------------------------------	----------------------------------------------------------------------------------------------------------------------------------------------------------------------------------------------------------------------------------------------------------------------------------------------------------------------------------------------------------------------------------------------------------------------------------------------------------------------------------------------------------------------------------------------------------------------------------------------------------------------------------------------------------------------------------------------------------------------------------------------------------------------------------------------------------------------------------------------------------------------------------------------------------------------------------------------------------------------------------------------------------------------------------------------------------------------------------------------

RECEIVED

SEP 22 2011

DISTRICT I
1625 N. FRENCH DR., HOBBS, NM 88240

DISTRICT II
1301 W. GRAND AVENUE, ARTESIA, NM 88210

DISTRICT III
1000 RIO BRAZOS RD., AZTEC, NM 87410

DISTRICT IV
11885 S. ST. FRANCIS DR., SANTA FE, NM 87505

State of New Mexico
Energy, Minerals & Natural Resources Department
OIL CONSERVATION DIVISION
1220 South St. Francis Dr.
Santa Fe, New Mexico 87505

Form C-102
Revised July 16, 2010
Submit to Appropriate
District Office

☐ AMENDED REPORT

WELL LOCATION AND ACREAGE DEDICATION PLAT

API Number 30-015-39103	Pool Code 58060	Pool Name Tamano; San Andres
Property Code 38650	Property Name RAZORBACK FEDERAL	Well Number 1
OGRID No. 013837	Operator Name MACK ENERGY CORPORATION	Elevation 3754'

Surface Location

UL or lot No.	Section	Township	Range	Lot Idn	Feet from the	North/South line	Feet from the	East/West line	County
4	3	18-S	31-E		710	NORTH	660	WEST	EDDY

Bottom Hole Location If Different From Surface

UL or lot No.	Section	Township	Range	Lot Idn	Feet from the	North/South line	Feet from the	East/West line	County
3	3	18-S	31-E		355	NORTH	2285	WEST	EDDY
Dedicated Acres 80	Joint or Infill	Consolidation Code	Order No.						

NO ALLOWABLE WILL BE ASSIGNED TO THIS COMPLETION UNTIL ALL INTERESTS HAVE BEEN CONSOLIDATED OR A NON-STANDARD UNIT HAS BEEN APPROVED BY THE DIVISION

<p>LOT 4</p> <p>710'</p> <p>2285'</p> <p>660'</p> <p>S.L.</p> <p>SEE DETAIL</p> <p>40.05 AC.</p>	<p>LOT 3</p> <p>355'</p> <p>B.H.</p> <p>GRID AZ - 77° 16' 45"</p> <p>HORZ. DIST. - 1663.8'</p> <p>40.09 AC.</p>	<p>LOT 2</p> <p>40.11 AC.</p>	<p>LOT 1</p> <p>40.15 AC.</p>	<p>OPERATOR CERTIFICATION</p> <p>I hereby certify that the information herein is true and complete to the best of my knowledge and belief, and that this organization either owns a working interest or unleased mineral interest in the land including the proposed bottom hole location or has a right to drill this well at this location pursuant to a contract with an owner of such mineral or working interest, or to a voluntary pooling agreement or a compulsory pooling order heretofore entered by the division.</p> <p><i>Deana Weaver</i> 5.28.13</p> <p>Signature _____ Date _____</p> <p>Deana Weaver</p> <p>Printed Name _____</p> <p>dweaver@mec.com</p> <p>E-mail Address _____</p>
<p>DETAIL</p> <p>3754.5'</p> <p>3757.2'</p> <p>600'</p> <p>3750.9'</p> <p>3747.7'</p> <p>600'</p> <p>GEODETIC COORDINATES NAD 27 NME SURFACE LOCATION Y=648423.2 N X=644446.1 E</p> <p>LAT.=32.781725° N LONG.=103.863341° W</p> <p>BOTTOM HOLE LOCATION Y=648789.5 N X=646068.7 E</p>				<p>SURVEYOR CERTIFICATION</p> <p>I hereby certify that the well location shown on this plat was plotted from field notes of actual surveys made by me or under my supervision, and that the same is true and correct to the best of my belief.</p> <p>DECEMBER 27, 2010</p> <p>Date of Survey _____</p> <p>Signature of Registered Professional Surveyor: _____</p> <p>NEW MEXICO 3239 REGISTERED PROFESSIONAL SURVEYOR Ronald J. Eidson Certificate Number Gary G. Eidson 12641 JESSIE G. Eidson 3239 LA JWSC W.O.: 11.13.1987</p>
<p>SECTION, QUARTER & SIXTEENTH CORNER COORDINATES</p> <p>Ⓐ - Y=649128.5, X=643782.2</p> <p>Ⓑ - Y=647807.8, X=643789.7</p> <p>Ⓒ - Y=649146.9, X=646422.5</p> <p>Ⓓ - Y=647826.2, X=646429.5</p>				<p>SCANNED</p>

DISTRICT I
1625 N. French Dr., Hobbs, NM 88240
Phone: (375) 393-6161 Fax: (375) 393-0720

DISTRICT II
811 S. First St., Artesia, NM 88210
Phone: (375) 748-1283 Fax: (375) 748-9720

DISTRICT III
1000 Rio Brazos Road, Aztec, NM 87410
Phone: (505) 334-6178 Fax: (505) 334-6170

DISTRICT IV
1220 S. St. Francis Dr., Santa Fe, NM 87505
Phone: (505) 476-3460 Fax: (505) 476-3462

State of New Mexico
Energy, Minerals & Natural Resources Department
OIL CONSERVATION DIVISION
1220 South St. Francis Dr.
Santa Fe, New Mexico 87505

Form C-102
Revised August 1, 2011
Submit one copy to appropriate
District Office

☐ AMENDED REPORT

WELL LOCATION AND ACREAGE DEDICATION PLAT

API Number 30-015-40928	Pool Code 97270	Pool Name Tamano; Delaware
Property Code 38891	Property Name RAZORBACK FEDERAL	Well Number 5
OGRID No. 013837	Operator Name MACK ENERGY CORPORATION	Elevation 3747'

Surface Location

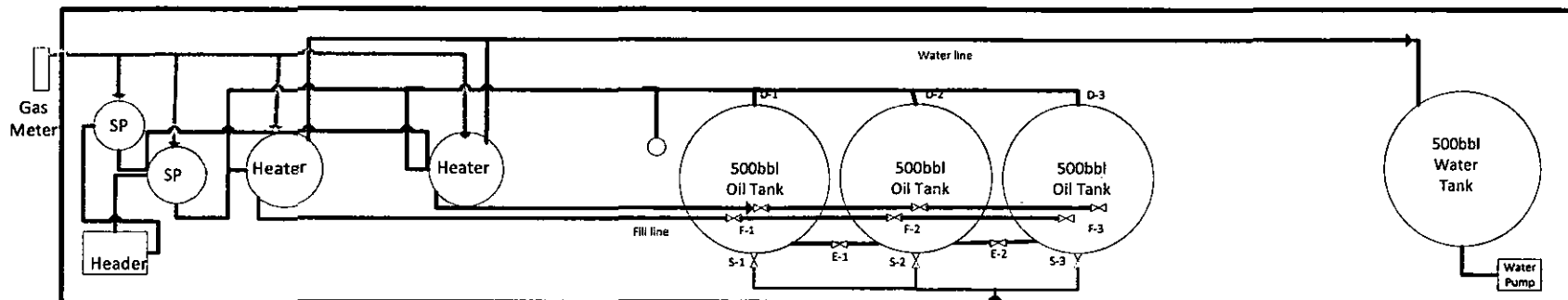
UL or lot No. E	Section 3	Township 18-S	Range 31-E	Lot Idn	Feet from the 1650	North/South line NORTH	Feet from the 330	East/West line WEST	County EDDY
--------------------	--------------	------------------	---------------	---------	-----------------------	---------------------------	----------------------	------------------------	----------------

Bottom Hole Location If Different From Surface

UL or lot No.	Section	Township	Range	Lot Idn	Feet from the	North/South line	Feet from the	East/West line	County
Dedicated Acres 40	Joint or Infill	Consolidation Code	Order No.						

NO ALLOWABLE WILL BE ASSIGNED TO THIS COMPLETION UNTIL ALL INTERESTS HAVE BEEN CONSOLIDATED OR A NON-STANDARD UNIT HAS BEEN APPROVED BY THE DIVISION

<p>4 3 2 1</p> <p>1650'</p> <p>40.05 AC. 40.09 AC. 40.11 AC. 40.15 AC.</p> <p>330' S.L. SEE DETAIL</p> <p>DETAIL</p> <p>3747.6' 3746.2' 600' 600' 3746.7' 3741.4'</p> <p>GEODETC COORDINATES NAD 27 NME</p> <p>SURFACE LOCATION Y=647481.2 N X=644121.5 E</p> <p>LAT.=32.779139' N LONG.=103.864411' W</p> <p>RECEIVED JUL 13 2012 MAILROOM</p>	<p>OPERATOR CERTIFICATION</p> <p>I hereby certify that the information herein is true and complete to the best of my knowledge and belief, and that this organization either owns a working interest or unleased mineral interest in the land including the proposed bottom hole location or has a right to drill this well at this location pursuant to a contract with an owner of such mineral or working interest, or to a voluntary pooling agreement or a compulsory pooling order heretofore entered by the division.</p> <p><i>Deana Weaver</i> 5.28.13 Signature Date</p> <p>Deana Weaver Printed Name</p> <p>dweaver@mec.com E-mail Address</p> <p>SURVEYOR CERTIFICATION</p> <p>I hereby certify that the well location shown on this plat was plotted from field notes of actual surveys made by me or under my supervision, and that the same is true and correct to the best of my belief.</p> <p>JUNE 6, 2012</p> <p>Date of Survey</p> <p>Signature & Seal of Professional Surveyor:</p> <p>RONALD J. EIDSON NEW MEXICO 3239 Professional Surveyor</p> <p>Certificate Number Gary C. Eidson 12641 Ronald J. Eidson 3239</p> <p>AF WSC W.O.: 12.11.1204</p>
-----------------------------------------------------------------------------------------------------------------------------------------------------------------------------------------------------------------------------------------------------------------------------------------------------------------------------------------------------------------------------	--------------------------------------------------------------------------------------------------------------------------------------------------------------------------------------------------------------------------------------------------------------------------------------------------------------------------------------------------------------------------------------------------------------------------------------------------------------------------------------------------------------------------------------------------------------------------------------------------------------------------------------------------------------------------------------------------------------------------------------------------------------------------------------------------------------------------------------------------------------------------------------------------------------------------------------------------------------------------------------------------------------------------------------------------------------------------------------------------------------------------------------------------------------------------------------------------------------------------



Mack Energy Corporation
 PO Box 960 Artesia, NM 88211-0960
 Razorback Federal TB
 NWNW Sec. 3 T18S R31E

Truck Loading
 Valve

Production Phase

Tank 1	Tank 2	Tank 3
F-1 Open	F-1 Closed	F-1 Closed
F-2 Closed	F-2 Open	F-2 Closed
F-3 Closed	F-3 Closed	F-3 Open
E-1 Open	E-1 Open	E-1 Closed
E-2 Closed	E-2 Closed	E-2 Open
D-1 Open	D-1 Closed	D-1 Closed
D-2 Closed	D-2 Open	D-2 Closed
D-3 Closed	D-3 Closed	D-3 Open
S-1 Closed	S-1 Closed	S-1 Closed
S-2 Closed	S-2 Closed	S-2 Closed
S-3 Closed	S-3 Closed	S-3 Closed

Sales Phase

Tank 1	Tank 2	Tank 3
F-1 Closed	F-1 Closed	F-1 Open
F-2 Closed	F-2 Closed	F-2 Closed
F-3 Open	F-3 Closed	F-3 Closed
E-1 Closed	E-1 Closed	E-1 Open
E-2 Open	E-2 Open	E-2 Closed
D-1 Closed	D-1 Closed	D-1 Open
D-2 Closed	D-2 Closed	D-2 Closed
D-3 Open	D-3 Closed	D-3 Closed
S-1 Open	S-1 Closed	S-1 Closed
S-2 Closed	S-2 Open	S-2 Closed
S-3 Closed	S-3 Closed	S-3 Open

NORTH





P.O. Box 960
Artesia, NM 88211-0960
Office (575) 748-1288
Fax (575) 746-9539

May 28, 2013

VIA CERTIFIED MAIL 7012 1010 0002 5887 4376

Commissioner of Public Lands
PO Box 1148
Santa Fe, NM 87504-1148

Dear Sir or Madam:

Mack Energy Corporation is requesting administrative approval from the NMOCD for approval of surface commingling of production on our Razorback Federal Lease NMNM-89882. This lease produces from the Tamano; San Andres (58060), Tamano; Delaware (97270) and will be commingled at a tank battery located in the NW/4 NW/4 Sec. 3 T18S R31E. There are currently 2 producing wells within this lease. Razorback Federal #1 & #2 are producing Tamano; San Andres and Razorback Federal #5 will be completed in the Tamano; Delaware.

Ownership is common between the Razorback Lease.

Allocation for oil and gas will be done using periodic well tests at the TB shown in the facility diagram. Each well will be tested periodically to insure accurate. Should you have any questions please contact me @ 575-748-1288.

Sincerely,

Deana Weaver
Production Clerk
dweaver@mec.com

DW/

Enclosures



P.O. Box 960
Artesia, NM 88211-0960
Office (575) 748-1288
Fax (575) 746-9539

May 28, 2013

VIA CERTIFIED MAIL 7012 1010 0002 5887 4369

Marathon Oil Company
PO Box 2069
Houston, TX 77252-2069

Dear Sir or Madam:

Mack Energy Corporation is requesting administrative approval from the NMOCD for approval of surface commingling of production on our Razorback Federal Lease NMNM-89882. This lease produces from the Tamano; San Andres (58060), Tamano; Delaware (97270) and will be commingled at a tank battery located in the NW/4 NW/4 Sec. 3 T18S R31E. There are currently 2 producing wells within this lease. Razorback Federal #1 & #2 are producing Tamano; San Andres and Razorback Federal #5 will be completed in the Tamano; Delaware.

Ownership is common between the Razorback Lease.

Allocation for oil and gas will be done using periodic well tests at the TB shown in the facility diagram. Each well will be tested periodically to insure accurate
Should you have any questions please contact me @ 575-748-1288.

Sincerely,

Deana Weaver
Production Clerk
dweaver@mec.com

DW/

Enclosures



P.O. Box 960
Artesia, NM 88211-0960
Office (575) 748-1288
Fax (575) 746-9539

May 28, 2013

VIA CERTIFIED MAIL 7012 1010 0002 5887 4345

Bureau of Land Management
620 E. Greene Street
Carlsbad, NM 88220

Dear Sir or Madam:

Mack Energy Corporation is requesting administrative approval from the NMOCD for approval of surface commingling of production on our Razorback Federal Lease NMNM-89882. This lease produces from the Tamano; San Andres (58060), Tamano; Delaware (97270) and will be commingled at a tank battery located in the NW/4 NW/4 Sec. 3 T18S R31E. There are currently 2 producing wells within this lease. Razorback Federal #1 & #2 are producing Tamano; San Andres and Razorback Federal #5 will be completed in the Tamano; Delaware.

Ownership is common between the Razorback Lease.

Allocation for oil and gas will be done using periodic well tests at the TB shown in the facility diagram. Each well will be tested periodically to insure accurate. Should you have any questions please contact me @ 575-748-1288.

Sincerely,

Deana Weaver
Production Clerk
dweaver@mec.com

DW/

Enclosures

Submit 3 Copies To Appropriate District
Office
District I
1625 N. French Dr., Hobbs, NM 88240
District II
1301 W. Grand Ave., Artesia, NM 88210
District III
1000 Rio Brazos Rd., Aztec, NM 87410
District IV
1220 S. St. Francis Dr., Santa Fe, NM
87505

State of New Mexico
Energy, Minerals and Natural Resources

Form C-103
June 19, 2008

OIL CONSERVATION DIVISION
1220 South St. Francis Dr.
Santa Fe, NM 87505

WELL API NO. 30-015-40928
5. Indicate Type of Lease STATE <input type="checkbox"/> FEE <input type="checkbox"/>
6. State Oil & Gas Lease No. Federal NMNM-89882
7. Lease Name or Unit Agreement Name Razorback Federal Lease
8. Well Number Multiple
9. OGRID Number 013837
10. Pool Name or Wildcat Tamano; San Andres, Delaware
11. Elevation (Show whether DR, RKB, RT, GP etc.) 3747' GL

SUNDRY NOTICES AND REPORTS ON WELLS
(DO NOT USE THIS FORM FOR PROPOSALS TO DRILL OR TO DEEPEN OR PLUG BACK TO A DIFFERENT RESERVOIR USE APPLICATION FOR PERMIT" (FORM C-101) FOR SUCH PROPOSALS.)

1. Type of Well: Oil Well ☒ Gas Well ☐ Other ☐

2. Name of Operator
Mack Energy Corporation

3. Address of Operator
P.O. Box 960 Artesia, NM 88210

4. Well Location
Unit Letter E 1650 feet from the North line and 330 feet from the West line
Section 3 Township 18S Range 31E NMPM County Eddy

12. Check Appropriate Box to Indicate Nature of Notice, Report or Other Data

NOTICE OF INTENTION TO:

PERFORM REMEDIAL WORK ☐ PLUG AND ABANDON ☐
TEMPORARILY ABANDON ☐ CHANGE PLANS ☐
PULL OR ALTER CASING ☐ MULTIPLE COMPL ☐
DOWNHOLE COMMINGLE ☐

SUBSEQUENT REPORT OF:

REMEDIALWORK ☐ ALTERING CASING ☐
COMMENCE DRILLING OPNS. ☐ P AND A ☐
CASING/CEMENT JOB ☐

OTHER: Surface Commingle ☒

OTHER: ☐

13. Describe proposed or completed operations. (Clearly state all pertinent details, and give pertinent dates, including estimated date of starting any proposed work). SEE RULE 1103. For Multiple Completions: Attach wellbore diagram of proposed completion or recompletion.

Mack Energy Corporation as operator respectfully requests administrative approval to surface commingle and measurement of production. It is requested that surface commingling of Tamano; San Andres and Tamano, Delaware pools be approved for the following lease: Razorback Federal (NMNM-89882) Sec. 3, T18S, R31E

The tank battery is located in the NW/4 NW/4, Sec. 3 T18S R31E. Proper allocation for production will be measured using periodic well tests. Mack Energy has made notification to all parties owning an interest in this lease, including the oil purchaser, of the intent to commingle. Interests in all pools on this lease are common.

Mack Energy is currently producing the Razorback Federal #1 & #2 in the San Andres and intend to complete the #5 in the Delaware Formation. At this time we are requesting approval to add the Delaware to this production.

Spud Date:

Rig Release Date:

I hereby certify that the information above is true and complete to the best of my knowledge and belief.

SIGNATURE

Deana Weaver

TITLE Production Clerk

DATE

5.28.13

Type or print name Deana Weaver

E-mail address: dweaver@mec.com

PHONE: (575)748-1288

For State Use Only

APPROVED BY:

TITLE

DATE

Conditions of Approval (if any):