

District I
1625 N. French Dr., Hobbs, NM 88240
District II
1301 W. Grand Avenue, Artesia, NM 88210
District III
1000 Rio Brazos Road, Aztec, NM 87410
District IV
1220 S. St. Francis Dr., Santa Fe, NM 87505

State of New Mexico
Energy Minerals and Natural Resources

Oil Conservation Division
1220 South St. Francis Dr.
Santa Fe, NM 87505

Form C-141
Revised October 10, 2003

Submit 2 Copies to appropriate
District Office in accordance
with Rule 116 on back
side of form

Release Notification and Corrective Action

OPERATOR

☐ Initial Report ☒ Final Report

Name of Company	Southern Union Gas Services, Ltd.	Contact	Rose Slade
Address	801 S. Loop 464, Monahans, TX, 79756	Telephone No.	432-940-5147
Facility Name: Pipeline #101	(RP-2677)	Facility Type	Natural Gas Gathering
Surface Owner	Crawford	Mineral Owner:	
		Lease No.	30-025-38822

LOCATION OF RELEASE

Unit Letter	Section	Township	Range	Feet from the	North/South Line	Feet from the	East/West Line	County
P	20	24S	37E					Lea

Latitude N32 degrees 11.749'

Longitude W103 degrees 10.788'

NATURE OF RELEASE

Type of Release	Crude Oil, Produced Water and Natural Gas	Volume of Release: 7BBLs	Volume Recovered: 4 BBLs
Source of Release	16-Inch Steel Pipeline	Date and Hour of Occurrence January 25, 2011 - Time Unknown	Date and Hour of Discovery January 25, 2011 - approximately 1200 hrs
Was Immediate Notice Given?	<input type="checkbox"/> Yes <input type="checkbox"/> No <input checked="" type="checkbox"/> Not Required	If YES, To Whom?	
By Whom?	Curt Stanley	Date and Hour:	HOBBS OCD
Was a Watercourse Reached?	<input type="checkbox"/> Yes <input checked="" type="checkbox"/> No	If YES, Volume Impacting the Watercourse.	
AUG 23 2013			

If a Watercourse was Impacted, Describe Fully.*

Describe Cause of Problem and Remedial Action Taken:

A sixteen (16) inch diameter low pressure steel pipeline developed a leak, most likely due to internal corrosion. A vacuum truck was called to recover free standing fluids from the ground surface. Following the excavation of the pipeline, a temporary pipeline clamp was utilized to mitigate the release. Following the initial response activities, the excavation was backfilled due to the proximity of the release to a county road. Permanent pipeline repairs will be made.

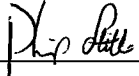

RECEIVED

Describe Area Affected and Cleanup Action Taken.

The release affected an area measuring approximately 1,700 square feet. The release will be remediated per NMOCD regulatory guidelines following the completion of permanent pipeline repair activities.

Between February 28, and March 8 2013, approximately 408 yd³ of impacted material was excavated from the location. The final dimensions of the excavation were approximately 45' x 15' x 15'. Soil samples collected from the excavation floor and sidewalls indicated concentrations of Benzene, BTEX, TPH and chloride were less than NMOCD Regulatory Standards. **Please see the attached Basin Environmental Services Technologies Remediation Summary and Site Closure Request for details of remedial activities and the site investigation.**

I hereby certify that the information given above is true and complete to the best of my knowledge and understand that pursuant to NMOCD rules and regulations all operators are required to report and/or file certain release notifications and perform corrective actions for releases, which may endanger public health or the environment. The acceptance of a C-141 report by the NMOCD marked as "Final Report" does not relieve the operator of liability should their operations have failed to adequately investigate and remediate contamination that pose a threat to ground water, surface water, human health or the environment. In addition, NMOCD acceptance of a C-141 report does not relieve the operator of responsibility for compliance with any other federal, state, or local laws and/or regulations.

Signature: 	OIL CONSERVATION DIVISION	
Printed Name: Phillip Little	Approved by District Supervisor  Environmental Specialist	
Title: EHS Compliance Specialist	Approval Date: 9/3/13	Expiration Date: -
E-mail Address: Phillip.Little@SUG.com	Conditions of Approval: -	
Date: 8/23/13	Phone: 575-631-2586	IRP-01-11-2677

SEP 03 2013

Basin Environmental Service Technologies, LLC

3100 Plains Highway
P. O. Box 301
Lovington, New Mexico 88260
jwlowry@basinenv.com

Office: (575) 396-2378 Fax: (575) 396-1429



REMEDIATION SUMMARY & SITE CLOSURE REQUEST

SOUTHERN UNION GAS SERVICES

LINE #101

Lea County, New Mexico

Unit Letter "P" (SE/SE), Section 20, Township 24 South, Range 37 East

Latitude 32.19642° North, Longitude 103.17897° West

NMOCD Reference # 1RP-2677

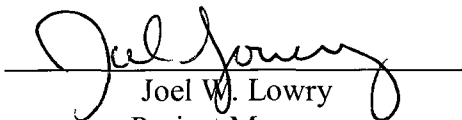
Prepared For:

Southern Union Gas Services
801 S. Loop 464
Monahans, TX 79756

Prepared By:

Basin Environmental Service Technologies, LLC
3100 Plains Highway
Lovington, New Mexico 88260

May 2013


Joel W. Lowry
Project Manager

HOEBS OCD
JUN 19 2013
RECEIVED

TABLE OF CONTENTS

1.0 INTRODUCTION & BACKGROUND INFORMATION.....	1
2.0 NMOCD SITE CLASSIFICATION.....	1
3.0 SUMMARY OF SOIL REMEDIATION ACTIVITIES.....	2
4.0 QA/QC PROCEDURES.....	3
4.1 Soil Sampling.....	3
4.2 Decontamination of Equipment.....	3
4.3 Laboratory Protocol.....	3
5.0 SITE CLOSURE REQUEST.....	3
6.0 LIMITATIONS.....	4
7.0 DISTRIBUTION.....	5

FIGURES

Figure 1 – Site Location Map

Figure 2 – Site & Sample Location Map

TABLES

Table 1 – Concentrations of Benzene, BTEX, TPH & Chloride in Soil

APPENDICES

Appendix A – Photographs

Appendix B – Laboratory Analytical Reports

Appendix C – Disposal Manifests

Appendix D – Release Notification and Corrective Action (Form C-141)

1.0 INTRODUCTION & BACKGROUND INFORMATION

Basin Environmental Service Technologies, LLC (Basin), on behalf of Southern Union Gas Services (Southern Union), has prepared this *Remediation Summary & Site Closure Request* for the release site known as Line #101 Historical. The legal description of the release site is Unit Letter "P" (SE/SE), Section 20, Township 24 South, Range 37 East, in Lea County, New Mexico. The geographic coordinates of the release site are 32.19642° North latitude and 103.17897° West longitude. The property affected by the release is owned by Mr. Crawford. Please reference Figure 1 for a "Site Location Map". General photographs of the release site are provided as Appendix A.

On January 25, 2011, Southern Union discovered a release had occurred on the Line #101 pipeline. The "Release Notification and Corrective Action Form" (Form C-141) indicated failure of a section of sixteen-inch (16") low-pressure pipeline resulted in the release of approximately seven barrels (7 bbls) of crude oil. During initial response activities a vacuum truck was utilized to recover approximately four barrels (4 bbls) of free standing fluid. The release was reported to the New Mexico Oil Conservation Division (NMOCD) Hobbs District Office on January 28, 2011. The initial C-141 indicated the release affected an area measuring approximately one thousand, seven hundred square feet (1,700 ft²). General photographs of the release site are provided as Appendix A. The Form C-141 is provided as Appendix D.

2.0 NMOCD SITE CLASSIFICATION

A search of the New Mexico Water Rights Reporting System (NMWRRS) database maintained by the New Mexico Office of the State Engineer (NMOSE) indicated information was not available for Section 23, Township 23 South, Range 36 East. An NMOCD Representative indicated the depth to groundwater is approximately one hundred and fifty feet (150') bgs on the initial Form C-141. Based on the NMOCD ranking system, zero (0) points will be assigned to the site as a result of this criterion.

A search of the NMWRRS database indicated there are no water wells within one thousand feet (1,000') of the release. Based on the NMOCD ranking system, zero (0) points will be assigned to the site as a result of this criterion.

There are no surface water bodies within one thousand feet (1,000') of the release. Based on the NMOCD ranking system, zero (0) points will be assigned to the site as a result of this criterion.

NMOCD guidelines indicate the Line #101 Historical Release Site has an initial ranking score of zero (0) points. The soil remediation levels for a site with a ranking score of zero (0) points are as follows:

- Benzene – 10 mg/Kg (ppm)
- Benzene, toluene, ethylbenzene and xylene (BTEX) – 50 mg/Kg (ppm)
- Total petroleum hydrocarbons (TPH) – 5,000 mg/Kg (ppm)

The New Mexico Administrative Code (NMAC) does not currently specify a remediation level for chloride concentrations in soil. Chloride remediation levels are set by the NMOCD on a site-specific basis.

3.0 SUMMARY OF SOIL REMEDIATION ACTIVITIES

On February 6, 2013, Basin began delineation activities at the release site. A test trench was advanced within the stained area to approximately ten feet (10') bgs. During the advancement of the test trench, three (3) soil samples (TT-1 @ 6', TT-1 @ 8' and TT-1 @ 10') were collected and submitted to Xenco Laboratories Inc., of Odessa, Texas for analysis of BTEX, TPH and chloride concentrations. Laboratory analytical results indicated BTEX concentrations were less than the appropriate laboratory method detection limit (MDL) for each of the submitted soil samples. Analytical results indicated TPH concentrations were less than the appropriate laboratory MDL for each of the submitted soil samples with the exception of TT-1 @ 8', which had a concentration of 26.5 mg/Kg. Chloride concentrations ranged from 1.63 mg/Kg for soil sample TT-1 @ 10' to 8.79 mg/Kg for soil sample TT-1 @ 6'. Table 1 summarizes the "Concentrations of Benzene, BTEX, TPH & Chloride in Soil". Soil sample locations are depicted in Figure 2, "Site & Sample Location Map". Laboratory analytical reports are provided as Appendix B.

On February 28, 2013, Basin began excavation activities at the release site. The excavation floor and sidewalls were advanced until chloride field tests and photo-ionization detector (PID) readings suggested concentrations of chloride and TPH were less than NMOCD regulatory remediation action levels established for the site. Impacted material was stockpiled on-site pending final disposition.

On March 1, 2013, one (1) soil sample (Floor @ 15') was collected from the excavation floor and submitted to the laboratory for analysis of BTEX, TPH and chloride concentrations. Laboratory analytical results indicated soil sample Floor @ 15' exhibited a BTEX concentration of 0.0200, a TPH concentration of less than the laboratory MDL and a chloride concentration of less than the laboratory MDL.

On March 6, 2013, six (6) soil samples (South East SW, South West SW, East SW Middle, North West SW, North East SW and West SW Middle) were collected from the sidewalls of the excavation and submitted to the laboratory for analysis of BTEX, TPH and chloride concentrations. Laboratory analytical results indicated BTEX concentrations were less than the appropriate laboratory MDL for each of the submitted soil samples. Analytical results indicated TPH concentrations ranged from less than the appropriate laboratory MDL for soil samples East SW Middle and West SW Middle to 96.7 mg/Kg for soil sample North West SW. Chloride concentrations ranged from less than the appropriate laboratory MDL for soil samples East SW Middle and West SW Middle to 8.97 mg/Kg for soil sample North East SW. BTEX, TPH and chloride concentrations were less than NMOCD regulatory remediation action levels for each of the submitted soil samples.

On March 26, 2013, on receiving approval from the NMOCD, Basin began backfilling the excavation with locally purchased, non-impacted material. Excavation backfill was compacted in twelve-inch lifts and contoured to fit the surrounding topography. The final dimensions of the

excavation were approximately forty-five feet (45') in length, fifteen feet (15') in width, and approximately fourteen feet (14') in depth.

Between February 28, and March 8, 2013, approximately 408 yd³ of impacted material was hauled to Sundance Services Inc. (NMOCD Permit #NM-01-0003), for disposal. Copies of disposal manifests are provided as Appendix C.

4.0 QA/QC PROCEDURES

4.1 Soil Sampling

Soil samples were delivered to Xenco Laboratories, Inc., of Odessa, Texas, for BTEX, TPH, and/or chloride analyses using the methods described below:

- BTEX concentrations in accordance with EPA Method SW-846 8021b
- TPH concentrations in accordance with modified EPA Method SW-846 8015M
- Chloride concentrations in accordance with EPA Method 300.1

4.2 Decontamination of Equipment

Cleaning of the sampling equipment was the responsibility of the environmental technician. Prior to use, and between each sample, the sampling equipment was cleaned with Liqui-Nox® detergent and rinsed with distilled water.

4.3 Laboratory Protocol

The laboratory was responsible for proper QA/QC procedures after signing the chain-of-custody form(s). These procedures were either transmitted with the laboratory reports or are on file at the laboratory.

5.0 SITE CLOSURE REQUEST

Confirmation soil samples collected from the floor and sidewalls of the Line #101 excavation were analyzed by an NMOCD-approved laboratory, which determined concentrations of benzene, BTEX, TPH and chloride were less than the regulatory remediation action levels established for the site. Based on these laboratory analytical results, Basin recommends Southern Union provide the NMOCD Hobbs District Office a copy of this *Remediation Summary & Site Closure Request* and request the NMOCD grant site closure to the Line #101 Historical release site.

6.0 LIMITATIONS

Basin Environmental Service Technologies, LLC, has prepared this *Remediation Summary & Site Closure Request* to the best of its ability. No other warranty, expressed or implied, is made or intended. Basin has examined and relied upon documents referenced in the report and on oral statements made by certain individuals. Basin has not conducted an independent examination of the facts contained in referenced materials and statements. Basin has presumed the genuineness of these documents and statements and that the information provided therein is true and accurate. Basin has prepared this report in a professional manner, using the degree of skill and care exercised by similar environmental consultants. Basin notes that the facts and conditions referenced in this report may change over time, and the conclusions and recommendations set forth herein are applicable only to the facts and conditions as described at the time of this report.

This report has been prepared for the benefit of Southern Union Gas Services. The information contained in this report, including all exhibits and attachments, may not be used by any other party without the express consent of Basin Environmental Service Technologies, LLC, and/or Southern Union Gas Services.

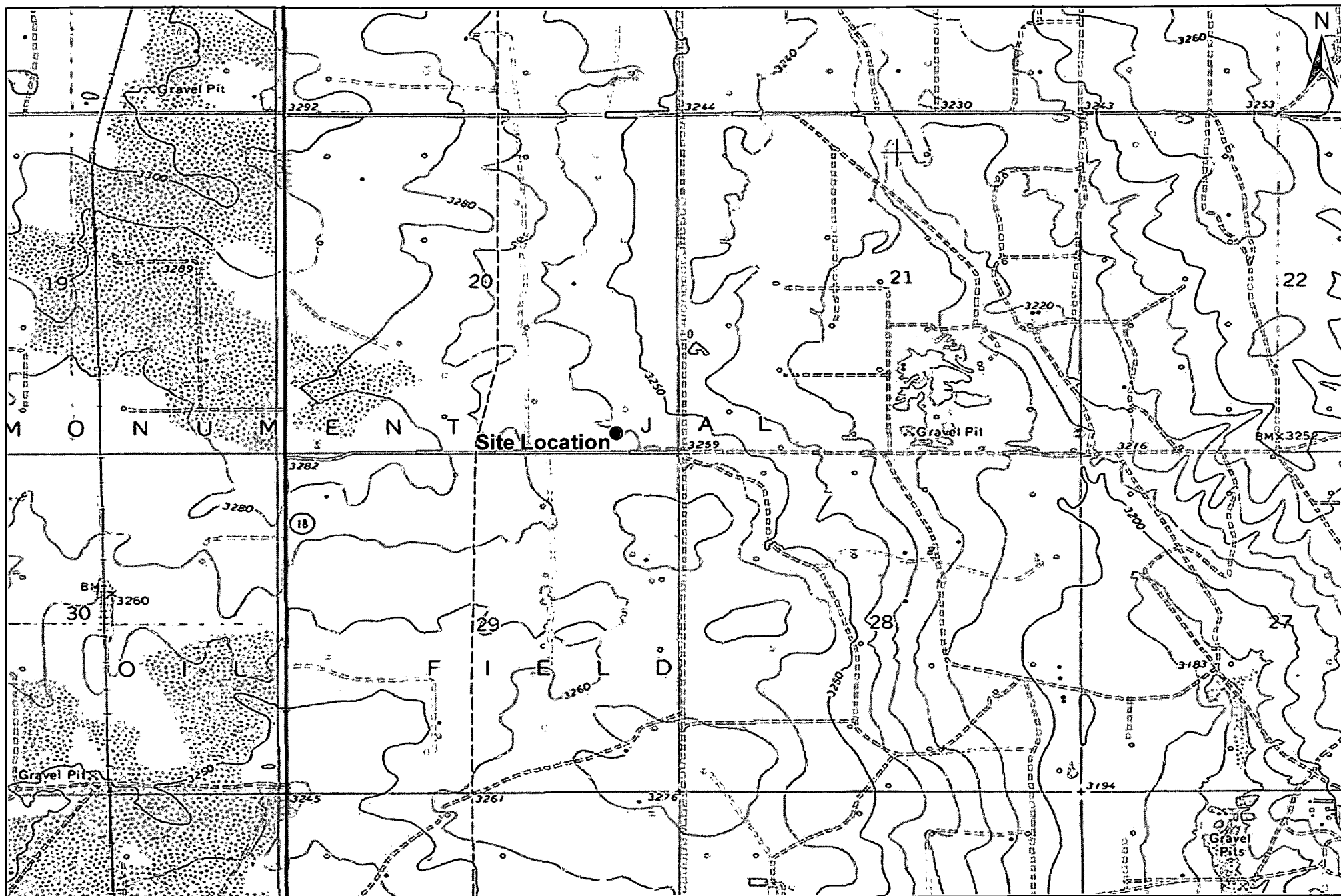
7.0 DISTRIBUTION:

Copy 1: Geoffrey Leking
New Mexico Energy, Minerals and Natural Resources Department
Oil Conservation Division (District 1)
1625 French Drive
Hobbs, NM 88240
GeoffreyR.Leking@state.nm.us

Copy 2: Rose Slade
Southern Union Gas Services
801 S. Loop 464
Monahans, Texas 79756
rose.slade@sug.com

Copy 3: Basin Environmental Service Technologies, LLC
P.O. Box 301
Lovington, New Mexico 88260

FIGURES



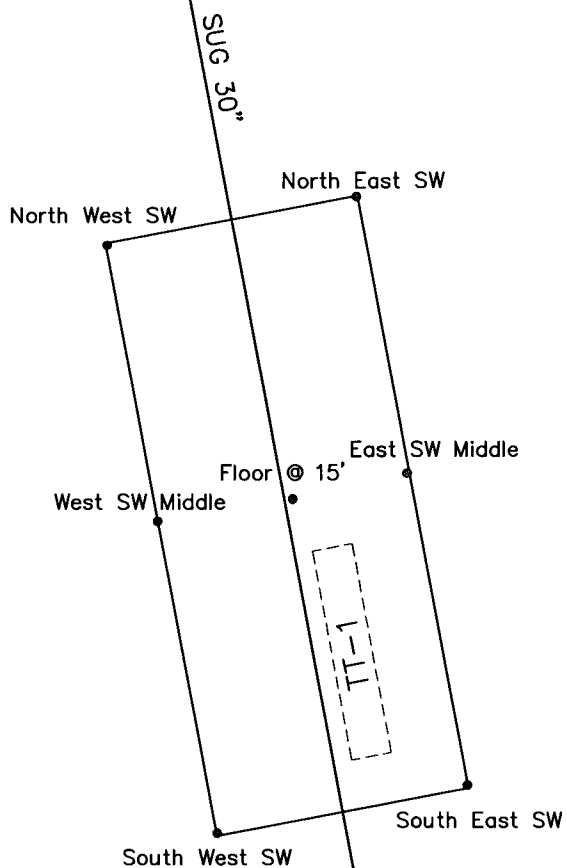
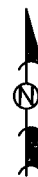
1,000 500 0 1,000 2,000
Distance in Feet

Figure 1
Site Location Map
Southern Union Gas Services
Line #101
Lea County, New Mexico
NMOCD Reference #: 1RP-2677

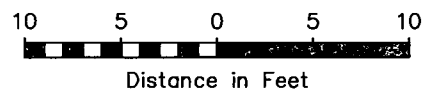


Basin Environmental Service Technologies, LLC
3100 Plains Hwy.
Lovington, NM 88260

Drawn By: BJA	Checked By: JWL
April 11, 2013	Scale: 1" = 2000'



Flying "E" Road



LEGEND:

- Excavation Extent
- Sample Location
- - - Paved Road
- Buried Pipeline
- Delineation Trench

Figure 2
Site & Sample Location Map
Southern Union Gas Services
Line #101 (RP-2667)
Lea County, NM

Basin Environmental Services

Scale: 1" = 10'	Drawn By: JWL	Prepared By: BRB
March 18, 2013		

TABLES

TABLE 1

CONCENTRATIONS OF BENZENE, BTEX, TPH & CHLORIDE IN SOIL

SOUTHERN UNION GAS SERVICES
 LINE #101
 HISTORICAL RELEASE SITE
 LEA COUNTY, NEW MEXICO
 NMOCD REF# 1RP-2677

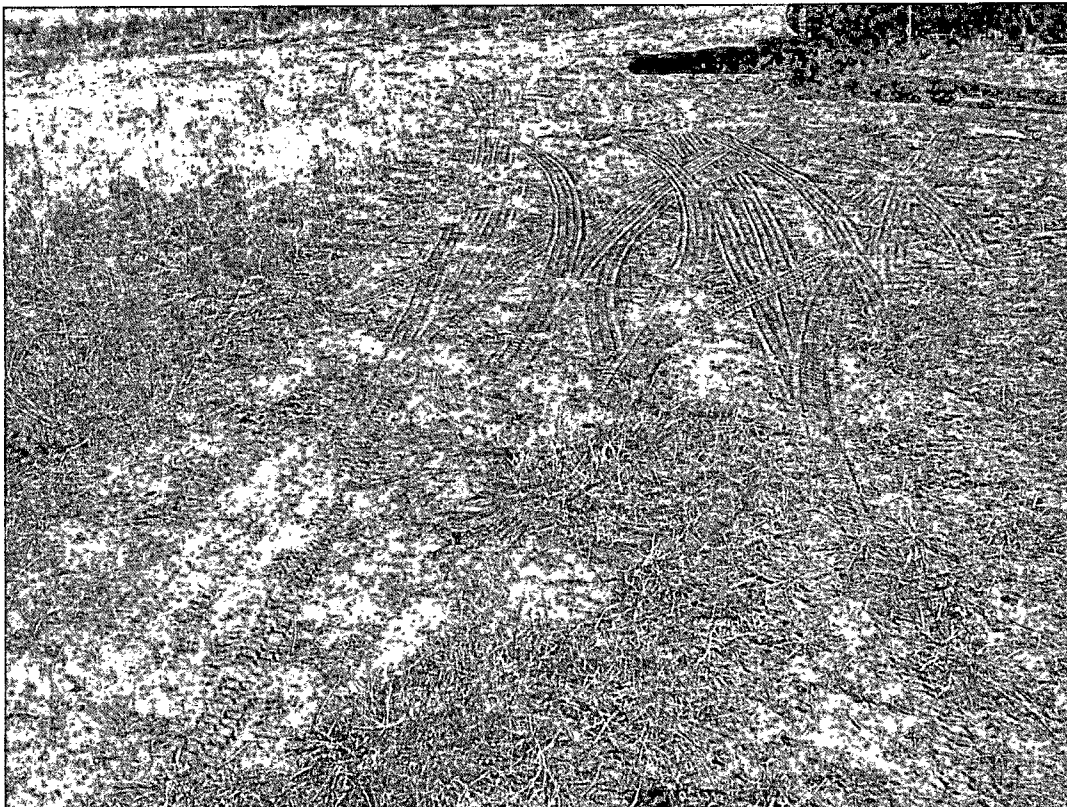
SAMPLE LOCATION	SAMPLE DEPTH (BGS)	SAMPLE DATE	SOIL STATUS	BENZENE (mg/Kg)	TOLUENE (mg/Kg)	ETHYL-BENZENE (mg/Kg)	TOTAL XYLENES (mg/Kg)	TOTAL BTEX (mg/Kg)	GRO C ₆ -C ₁₂ (mg/Kg)	DRO C ₁₂ -C ₂₈ (mg/Kg)	ORO C ₂₈ -C ₃₅ (mg/Kg)	TOTAL TPH C ₆ -C ₂₈ (mg/Kg)	CHLORIDE (mg/Kg)
TT-1 @ 6'	6'	2/6/2013	Excavated	<0.00137	<0.00273	<0.00137	<0.00273	<0.00273	<20.5	<20.5	<20.5	<20.5	8.79
TT-1 @ 8'	8'	2/6/2013	Excavated	<0.00106	<0.00213	<0.00106	<0.00213	<0.00213	<16.0	26.5	<16.0	26.5	3.65
TT-1 @ 10'	10'	2/6/2013	Excavated	<0.00133	<0.00267	<0.00133	<0.00267	<0.00267	<20.0	<20.0	<20.0	<20.0	1.63
Floor @ 15'	15'	3/1/2013	In-Situ	<0.00109	<0.00218	0.00323	0.0168	0.0200	<16.5	<16.5	<16.5	<16.5	<4.00
South East SW	15'	3/6/2013	In-Situ	<0.00134	<0.00269	<0.00134	<0.00269	<0.00269	<20.1	29.9	<20.1	29.9	4.34
South West SW	15'	3/6/2013	In-Situ	<0.00137	<0.00273	<0.00137	<0.00273	<0.00273	<20.6	27.2	<20.6	27.2	3.26
East SW Middle	15'	3/6/2013	In-Situ	<0.00143	<0.00286	<0.00143	<0.00286	<0.00286	<21.5	<21.5	<21.5	<21.5	<2.00
North West SW	14'	3/6/2013	In-Situ	<0.00113	<0.00227	<0.00113	<0.00227	<0.00227	<17.1	96.7	<17.1	96.7	8.16
North East SW	14'	3/6/2013	In-Situ	<0.00135	<0.00270	<0.00135	<0.00270	<0.00270	<20.3	50.7	<20.3	50.7	8.97
West SW Middle	15'	3/6/2013	In-Situ	<0.00129	<0.00257	<0.00129	<0.00257	<0.00257	<19.3	<19.3	<19.3	<19.3	<2.00
NMOCD Standard				10				50				1,000	500

- = Not analyzed.

APPENDICES

APPENDIX A

Photographs



Photograph of the initial release at the Line #101 Historical Release Site.



Photograph of excavation activities at the Line #101 Historical Release Site.



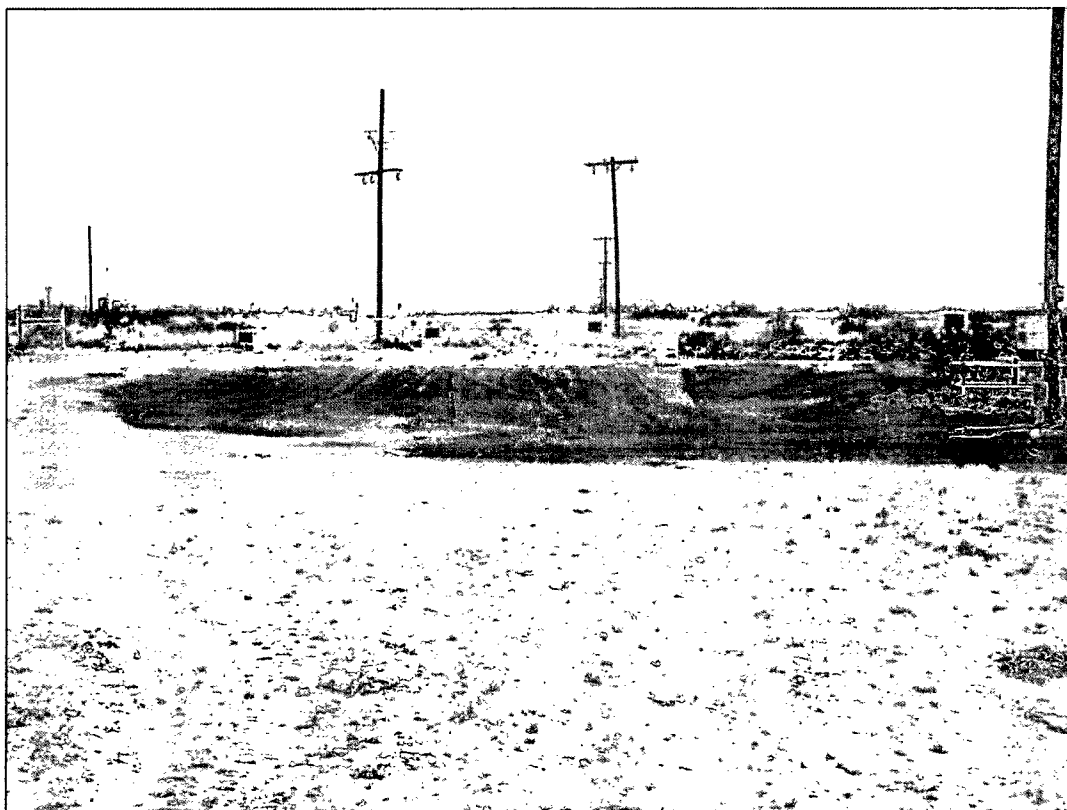
Photograph of excavation activities at the Line #101 Historical Release Site.



Photograph of the completed excavation at the Line #101 Historical Release Site.



Photograph of the completed excavation at the Line #101 Historical Release Site.



Photograph of the backfilled excavation at the Line #101 Historical Release Site.

APPENDIX B

Laboratory Analytical Reports

Analytical Report 457380
for
Southern Union Gas Services- Monahans

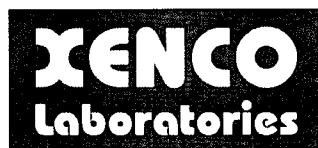
Project Manager: Joel Lowry

Line #101

1RP-2677

12-FEB-13

Collected By: Client



12600 West I-20 East Odessa, Texas 79765

Xenco-Houston (EPA Lab code: TX00122):

Texas (T104704215-10-6-TX), Arizona (AZ0765), Arkansas (08-039-0), Connecticut (PH-0102), Florida (E871002)
Illinois (002082), Indiana (C-TX-02), Iowa (392), Kansas (E-10380), Kentucky (45), Louisiana (03054)
New Hampshire (297408), New Jersey (TX007), New York (11763), Oklahoma (9218), Pennsylvania (68-03610)
Rhode Island (LAO00312), USDA (S-44102), DoD (L11-54)

Xenco-Atlanta (EPA Lab Code: GA00046):

Florida (E87429), North Carolina (483), South Carolina (98015), Kentucky (85), DoD (L10-135)
Louisiana (04176), USDA (P330-07-00105)

Xenco-Tampa Mobile (EPA Lab code: FL01212): Florida (E84900)

Xenco-Lakeland: Florida (E84098)

Xenco-Odessa (EPA Lab code: TX00158): Texas (T104704400-TX)

Xenco-Dallas (EPA Lab code: TX01468): Texas (T104704295-TX)

Xenco Phoenix (EPA Lab Code: AZ00901): Arizona (AZ0757)

Xenco-Phoenix Mobile (EPA Lab code: AZ00901): Arizona (AZM757)

Xenco Tucson (EPA Lab code: AZ000989): Arizona (AZ0758)



12-FEB-13

Project Manager: **Joel Lowry**
Southern Union Gas Services- Monahans
801 South Loop 464
Monahans, TX 79756

Reference: XENCO Report No(s): **457380**
Line #101
Project Address: Lea County, NM

Joel Lowry:

We are reporting to you the results of the analyses performed on the samples received under the project name referenced above and identified with the XENCO Report Number(s) 457380. All results being reported under this Report Number apply to the samples analyzed and properly identified with a Laboratory ID number. Subcontracted analyses are identified in this report with either the NELAC certification number of the subcontract lab in the analyst ID field, or the complete subcontracted report attached to this report.

Unless otherwise noted in a Case Narrative, all data reported in this Analytical Report are in compliance with NELAC standards. The uncertainty of measurement associated with the results of analysis reported is available upon request. Should insufficient sample be provided to the laboratory to meet the method and NELAC Matrix Duplicate and Matrix Spike requirements, then the data will be analyzed, evaluated and reported using all other available quality control measures.

The validity and integrity of this report will remain intact as long as it is accompanied by this letter and reproduced in full, unless written approval is granted by XENCO Laboratories. This report will be filed for at least 5 years in our archives after which time it will be destroyed without further notice, unless otherwise arranged with you. The samples received, and described as recorded in Report No. 457380 will be filed for 60 days, and after that time they will be properly disposed without further notice, unless otherwise arranged with you. We reserve the right to return to you any unused samples, extracts or solutions related to them if we consider so necessary (e.g., samples identified as hazardous waste, sample sizes exceeding analytical standard practices, controlled substances under regulated protocols, etc).

We thank you for selecting XENCO Laboratories to serve your analytical needs. If you have any questions concerning this report, please feel free to contact us at any time.

Respectfully,

Alejandro Montoya

New Mexico Laboratory Director

Recipient of the Prestigious Small Business Administration Award of Excellence in 1994.

Certified and approved by numerous States and Agencies.

A Small Business and Minority Status Company that delivers SERVICE and QUALITY

Houston - Dallas - Odessa - San Antonio - Tampa - Lakeland - Atlanta - Phoenix - Oklahoma - Latin America



Sample Cross Reference 457380



Southern Union Gas Services- Monahans, Monahans, TX

Line #101

Sample Id	Matrix	Date Collected	Sample Depth	Lab Sample Id
TT-1 @ 6'	S	02-06-13 02:55	6 ft	457380-001
TT-1 @ 8'	S	02-06-13 03:20	8 ft	457380-002
TT-1 @ 10'	S	02-06-13 03:50	10 ft	457380-003



CASE NARRATIVE

Client Name: Southern Union Gas Services- Monahans
Project Name: Line #101



Project ID: 1RP-2677
Work Order Number(s): 457380

Report Date: 12-FEB-13
Date Received: 02/08/2013

Sample receipt non conformances and comments:

Sample receipt non conformances and comments per sample:

None

Analytical non conformances and comments:

Batch: LBA-906664 BTEX by EPA 8021B
SW8021BM

Batch 906664, m_p-Xylenes, o-Xylene recovered below QC limits in the Matrix Spike.

Samples affected are: 457380-001, -002, -003.

The Laboratory Control Sample for m_p-Xylenes , o-Xylene is within laboratory Control Limits



Certificate of Analysis Summary 457380

Southern Union Gas Services- Monahans, Monahans, TX



Project Id: 1RP-2677

Contact: Joel Lowry

Project Location: Lea County, NM

Project Name: Line #101

Date Received in Lab: Fri Feb-08-13 03:08 pm

Report Date: 12-FEB-13

Project Manager: Nicholas Straccione

Analysis Requested	Lab Id:	457380-001	457380-002	457380-003			
	Field Id:	TT-1 @ 6'	TT-1 @ 8'	TT-1 @ 10'			
	Depth:	6- ft	8- ft	10- ft			
	Matrix:	SOIL	SOIL	SOIL			
	Sampled:	Feb-06-13 02:55	Feb-06-13 03:20	Feb-06-13 03:50			
BTEX by EPA 8021B	Extracted:	Feb-11-13 15:00	Feb-11-13 15:00	Feb-11-13 15:00			
	Analyzed:	Feb-11-13 19:42	Feb-11-13 19:58	Feb-11-13 20:14			
	Units/RL:	mg/kg RL	mg/kg RL	mg/kg RL			
Benzene		ND 0.00137	ND 0.00106	ND 0.00133			
Toluene		ND 0.00273	ND 0.00213	ND 0.00267			
Ethylbenzene		ND 0.00137	ND 0.00106	ND 0.00133			
m_p-Xylenes		ND 0.00273	ND 0.00213	ND 0.00267			
o-Xylene		ND 0.00137	ND 0.00106	ND 0.00133			
Total Xylenes		ND 0.00137	ND 0.00106	ND 0.00133			
Total BTEX		ND 0.00137	ND 0.00106	ND 0.00133			
Inorganic Anions by EPA 300/300.1 SUB: TX104704215	Extracted:	Feb-12-13 13:35	Feb-12-13 14:27	Feb-12-13 14:44			
	Analyzed:	Feb-12-13 13:35	Feb-12-13 14:27	Feb-12-13 14:44			
	Units/RL:	mg/kg RL	mg/kg RL	mg/kg RL			
Chloride		8.79 1.37	3.65 1.07	1.63 1.33			
Percent Moisture	Extracted:						
	Analyzed:	Feb-11-13 17:00	Feb-11-13 17:00	Feb-11-13 17:00			
	Units/RL:	% RL	% RL	% RL			
Percent Moisture		27.0 1.00	6.66 1.00	25.0 1.00			
TPH By SW8015 Mod	Extracted:	Feb-11-13 15:10	Feb-11-13 15:10	Feb-11-13 15:10			
	Analyzed:	Feb-11-13 19:23	Feb-11-13 19:50	Feb-12-13 09:18			
	Units/RL:	mg/kg RL	mg/kg RL	mg/kg RL			
C6-C12 Gasoline Range Hydrocarbons		ND 20.5	ND 16.0	ND 20.0			
C12-C28 Diesel Range Hydrocarbons		ND 20.5	26.5 16.0	ND 20.0			
C28-C35 Oil Range Hydrocarbons		ND 20.5	ND 16.0	ND 20.0			
Total TPH		ND 20.5	26.5 16.0	ND 20.0			

This analytical report, and the entire data package it represents, has been made for your exclusive and confidential use.
The interpretations and results expressed throughout this analytical report represent the best judgment of XENCO Laboratories.
XENCO Laboratories assumes no responsibility and makes no warranty to the end use of the data hereby presented.
Our liability is limited to the amount invoiced for this work order unless otherwise agreed to in writing.

Houston - Dallas - San Antonio - Atlanta - Tampa - Boca Raton - Latin America - Odessa - Corpus Christi

Alejandro Montoya
New Mexico Laboratory Director

Flagging Criteria

- X** In our quality control review of the data a QC deficiency was observed and flagged as noted. MS/MSD recoveries were found to be outside of the laboratory control limits due to possible matrix /chemical interference, or a concentration of target analyte high enough to affect the recovery of the spike concentration. This condition could also affect the relative percent difference in the MS/MSD.
- B** A target analyte or common laboratory contaminant was identified in the method blank. Its presence indicates possible field or laboratory contamination.
- D** The sample(s) were diluted due to targets detected over the highest point of the calibration curve, or due to matrix interference. Dilution factors are included in the final results. The result is from a diluted sample.
- E** The data exceeds the upper calibration limit; therefore, the concentration is reported as estimated.
- F** RPD exceeded lab control limits.
- J** The target analyte was positively identified below the quantitation limit and above the detection limit.
- U** Analyte was not detected.
- L** The LCS data for this analytical batch was reported below the laboratory control limits for this analyte. The department supervisor and QA Director reviewed data. The samples were either reanalyzed or flagged as estimated concentrations.
- H** The LCS data for this analytical batch was reported above the laboratory control limits. Supporting QC Data were reviewed by the Department Supervisor and QA Director. Data were determined to be valid for reporting.
- K** Sample analyzed outside of recommended hold time.
- JN** A combination of the "N" and the "J" qualifier. The analysis indicates that the analyte is "tentatively identified" and the associated numerical value may not be consistent with the amount actually present in the environmental sample.

* Surrogate recovered outside laboratory control limit.

BRL Below Reporting Limit.

RL Reporting Limit

MDL Method Detection Limit **SDL** Sample Detection Limit **LOD** Limit of Detection

PQL Practical Quantitation Limit **MQL** Method Quantitation Limit **LOQ** Limit of Quantitation

DL Method Detection Limit

NC Non-Calculable

+ NELAC certification not offered for this compound.

* (Next to analyte name or method description) = Outside XENCO's scope of NELAC accreditation

Recipient of the Prestigious Small Business Administration Award of Excellence in 1994.

Certified and approved by numerous States and Agencies.

A Small Business and Minority Status Company that delivers SERVICE and QUALITY

Houston - Dallas - San Antonio - Atlanta - Midland/Odessa - Tampa/Lakeland - Phoenix - Latin America

4143 Greenbriar Dr, Stafford, TX 77477
 9701 Harry Hines Blvd, Dallas, TX 75220
 5332 Blackberry Drive, San Antonio TX 78238
 2505 North Falkenburg Rd, Tampa, FL 33619
 12600 West I-20 East, Odessa, TX 79765
 6017 Financial Drive, Norcross, GA 30071
 3725 E. Atlanta Ave, Phoenix, AZ 85040

Phone	Fax
(281) 240-4200	(281) 240-4280
(214) 902 0300	(214) 351-9139
(210) 509-3334	(210) 509-3335
(813) 620-2000	(813) 620-2033
(432) 563-1800	(432) 563-1713
(770) 449-8800	(770) 449-5477
(602) 437-0330	



Form 2 - Surrogate Recoveries

Project Name: Line #101

Work Orders : 457380,

Project ID: 1RP-2677

Lab Batch #: 906743

Sample: 457380-001 / SMP

Batch: 1 Matrix: Soil

Units: mg/kg

Date Analyzed: 02/11/13 19:23

SURROGATE RECOVERY STUDY

TPH By SW8015 Mod Analytes	Amount Found [A]	True Amount [B]	Recovery %R [D]	Control Limits %R	Flags
1-Chlorooctane	108	99.9	108	70-135	
o-Terphenyl	58.4	50.0	117	70-135	

Lab Batch #: 906664

Sample: 457380-001 / SMP

Batch: 1 Matrix: Soil

Units: mg/kg

Date Analyzed: 02/11/13 19:42

SURROGATE RECOVERY STUDY

BTEX by EPA 8021B Analytes	Amount Found [A]	True Amount [B]	Recovery %R [D]	Control Limits %R	Flags
1,4-Difluorobenzene	0.0273	0.0300	91	80-120	
4-Bromofluorobenzene	0.0252	0.0300	84	80-120	

Lab Batch #: 906743

Sample: 457380-002 / SMP

Batch: 1 Matrix: Soil

Units: mg/kg

Date Analyzed: 02/11/13 19:50

SURROGATE RECOVERY STUDY

TPH By SW8015 Mod Analytes	Amount Found [A]	True Amount [B]	Recovery %R [D]	Control Limits %R	Flags
1-Chlorooctane	106	99.8	106	70-135	
o-Terphenyl	56.8	49.9	114	70-135	

Lab Batch #: 906664

Sample: 457380-002 / SMP

Batch: 1 Matrix: Soil

Units: mg/kg

Date Analyzed: 02/11/13 19:58

SURROGATE RECOVERY STUDY

BTEX by EPA 8021B Analytes	Amount Found [A]	True Amount [B]	Recovery %R [D]	Control Limits %R	Flags
1,4-Difluorobenzene	0.0259	0.0300	86	80-120	
4-Bromofluorobenzene	0.0276	0.0300	92	80-120	

Lab Batch #: 906664

Sample: 457380-003 / SMP

Batch: 1 Matrix: Soil

Units: mg/kg

Date Analyzed: 02/11/13 20:14

SURROGATE RECOVERY STUDY

BTEX by EPA 8021B Analytes	Amount Found [A]	True Amount [B]	Recovery %R [D]	Control Limits %R	Flags
1,4-Difluorobenzene	0.0254	0.0300	85	80-120	
4-Bromofluorobenzene	0.0256	0.0300	85	80-120	

* Surrogate outside of Laboratory QC limits

** Surrogates outside limits; data and surrogates confirmed by reanalysis

*** Poor recoveries due to dilution

Surrogate Recovery [D] = $100 * A / B$

All results are based on MDL and validated for QC purposes.



Form 2 - Surrogate Recoveries

Project Name: Line #101

Work Orders : 457380,

Project ID: 1RP-2677

Lab Batch #: 906743

Sample: 457380-003 / SMP

Batch: 1 Matrix: Soil

Units: mg/kg

Date Analyzed: 02/12/13 09:18

SURROGATE RECOVERY STUDY

TPH By SW8015 Mod	Amount Found [A]	True Amount [B]	Recovery %R [D]	Control Limits %R	Flags
Analytes					
1-Chlorooctane	108	100	108	70-135	
o-Terphenyl	59.1	50.1	118	70-135	

Lab Batch #: 906664

Sample: 633644-1-BLK / BLK

Batch: 1 Matrix: Solid

Units: mg/kg

Date Analyzed: 02/11/13 10:25

SURROGATE RECOVERY STUDY

BTEX by EPA 8021B	Amount Found [A]	True Amount [B]	Recovery %R [D]	Control Limits %R	Flags
Analytes					
1,4-Difluorobenzene	0.0268	0.0300	89	80-120	
4-Bromofluorobenzene	0.0284	0.0300	95	80-120	

Lab Batch #: 906743

Sample: 633686-1-BLK / BLK

Batch: 1 Matrix: Solid

Units: mg/kg

Date Analyzed: 02/11/13 17:34

SURROGATE RECOVERY STUDY

TPH By SW8015 Mod	Amount Found [A]	True Amount [B]	Recovery %R [D]	Control Limits %R	Flags
Analytes					
1-Chlorooctane	106	99.9	106	70-135	
o-Terphenyl	58.1	50.0	116	70-135	

Lab Batch #: 906664

Sample: 633644-1-BKS / BKS

Batch: 1 Matrix: Solid

Units: mg/kg

Date Analyzed: 02/11/13 09:52

SURROGATE RECOVERY STUDY

BTEX by EPA 8021B	Amount Found [A]	True Amount [B]	Recovery %R [D]	Control Limits %R	Flags
Analytes					
1,4-Difluorobenzene	0.0348	0.0300	116	80-120	
4-Bromofluorobenzene	0.0278	0.0300	93	80-120	

Lab Batch #: 906743

Sample: 633686-1-BKS / BKS

Batch: 1 Matrix: Solid

Units: mg/kg

Date Analyzed: 02/11/13 16:43

SURROGATE RECOVERY STUDY

TPH By SW8015 Mod	Amount Found [A]	True Amount [B]	Recovery %R [D]	Control Limits %R	Flags
Analytes					
1-Chlorooctane	107	99.8	107	70-135	
o-Terphenyl	61.1	49.9	122	70-135	

* Surrogate outside of Laboratory QC limits

** Surrogates outside limits; data and surrogates confirmed by reanalysis

*** Poor recoveries due to dilution

Surrogate Recovery [D] = $100 * A / B$

All results are based on MDL and validated for QC purposes.



Form 2 - Surrogate Recoveries

Project Name: Line #101

Work Orders : 457380,

Project ID: 1RP-2677

Lab Batch #: 906664

Sample: 633644-1-BSD / BSD

Batch: 1 Matrix: Solid

Units: mg/kg

Date Analyzed: 02/11/13 10:09

SURROGATE RECOVERY STUDY

BTEX by EPA 8021B	Amount Found [A]	True Amount [B]	Recovery %R [D]	Control Limits %R	Flags
Analytes					
1,4-Difluorobenzene	0.0333	0.0300	111	80-120	
4-Bromofluorobenzene	0.0281	0.0300	94	80-120	

Lab Batch #: 906743

Sample: 633686-1-BSD / BSD

Batch: 1 Matrix: Solid

Units: mg/kg

Date Analyzed: 02/11/13 17:09

SURROGATE RECOVERY STUDY

TPH By SW8015 Mod	Amount Found [A]	True Amount [B]	Recovery %R [D]	Control Limits %R	Flags
Analytes					
1-Chlorooctane	106	99.9	106	70-135	
o-Terphenyl	57.4	50.0	115	70-135	

Lab Batch #: 906664

Sample: 456965-001 S / MS

Batch: 1 Matrix: Sludge

Units: mg/kg

Date Analyzed: 02/11/13 11:48

SURROGATE RECOVERY STUDY

BTEX by EPA 8021B	Amount Found [A]	True Amount [B]	Recovery %R [D]	Control Limits %R	Flags
Analytes					
1,4-Difluorobenzene	0.0346	0.0300	115	80-120	
4-Bromofluorobenzene	0.0314	0.0300	105	80-120	

Lab Batch #: 906743

Sample: 457380-002 S / MS

Batch: 1 Matrix: Soil

Units: mg/kg

Date Analyzed: 02/12/13 02:20

SURROGATE RECOVERY STUDY

TPH By SW8015 Mod	Amount Found [A]	True Amount [B]	Recovery %R [D]	Control Limits %R	Flags
Analytes					
1-Chlorooctane	107	99.9	107	70-135	
o-Terphenyl	63.0	50.0	126	70-135	

Lab Batch #: 906664

Sample: 456965-001 SD / MSD

Batch: 1 Matrix: Sludge

Units: mg/kg

Date Analyzed: 02/11/13 12:04

SURROGATE RECOVERY STUDY

BTEX by EPA 8021B	Amount Found [A]	True Amount [B]	Recovery %R [D]	Control Limits %R	Flags
Analytes					
1,4-Difluorobenzene	0.0290	0.0300	97	80-120	
4-Bromofluorobenzene	0.0297	0.0300	99	80-120	

* Surrogate outside of Laboratory QC limits

** Surrogates outside limits; data and surrogates confirmed by reanalysis

*** Poor recoveries due to dilution

Surrogate Recovery [D] = $100 * A / B$

All results are based on MDL and validated for QC purposes.



Form 2 - Surrogate Recoveries

Project Name: Line #101

Work Orders : 457380,

Project ID: 1RP-2677

Lab Batch #: 906743

Sample: 457380-002 SD / MSD

Batch: 1 Matrix: Soil

Units: mg/kg

Date Analyzed: 02/12/13 02:46

SURROGATE RECOVERY STUDY

TPH By SW8015 Mod Analytes	Amount Found [A]	True Amount [B]	Recovery %R [D]	Control Limits %R	Flags
I-Chlorooctane	107	99.7	107	70-135	
o-Terphenyl	59.0	49.9	118	70-135	

* Surrogate outside of Laboratory QC limits

** Surrogates outside limits; data and surrogates confirmed by reanalysis

*** Poor recoveries due to dilution

Surrogate Recovery [D] = $100 * A / B$

All results are based on MDL and validated for QC purposes.

Project Name: Line #101

Work Order #: 457380

Project ID:

1RP-2677

Lab Batch #: 906768

Sample: 633706-1-BKS

Matrix: Solid

Date Analyzed: 02/12/2013

Date Prepared: 02/12/2013

Analyst: RKO

Reporting Units: mg/kg

Batch #: 1

BLANK /BLANK SPIKE RECOVERY STUDY

Inorganic Anions by EPA 300/300.1		Blank Result [A]	Spike Added [B]	Blank Spike Result [C]	Blank Spike %R [D]	Control Limits %R	Flags
Analytes							
Chloride		<1.00	100	101	101	80-120	

Blank Spike Recovery [D] = $100 * [C] / [B]$

All results are based on MDL and validated for QC purposes.

BRL - Below Reporting Limit

Project Name: Line #101

Work Order #: 457380

Analyst: KEB

Date Prepared: 02/11/2013

Project ID: 1RP-2677

Date Analyzed: 02/11/2013

Lab Batch ID: 906664

Sample: 633644-1-BKS

Batch #: 1

Matrix: Solid

Units: mg/kg

BLANK /BLANK SPIKE / BLANK SPIKE DUPLICATE RECOVERY STUDY

BTEX by EPA 8021B	Blank Sample Result [A]	Spike Added [B]	Blank Spike Result [C]	Blank Spike %R [D]	Spike Added [E]	Blank Spike Duplicate Result [F]	Blk. Spk Dup. %R [G]	RPD %	Control Limits %R	Control Limits %RPD	Flag
Analytes											
Benzene	<0.000998	0.0998	0.0884	89	0.100	0.0814	81	8	70-130	35	
Toluene	<0.00200	0.0998	0.0839	84	0.100	0.0811	81	3	70-130	35	
Ethylbenzene	<0.000998	0.0998	0.0858	86	0.100	0.0784	78	9	71-129	35	
m_p-Xylenes	<0.00200	0.200	0.168	84	0.201	0.153	76	9	70-135	35	
o-Xylene	<0.000998	0.0998	0.0840	84	0.100	0.0760	76	10	71-133	35	

Analyst: KEB

Date Prepared: 02/11/2013

Date Analyzed: 02/11/2013

Lab Batch ID: 906743

Sample: 633686-1-BKS

Batch #: 1

Matrix: Solid

Units: mg/kg

BLANK /BLANK SPIKE / BLANK SPIKE DUPLICATE RECOVERY STUDY

TPH By SW8015 Mod	Blank Sample Result [A]	Spike Added [B]	Blank Spike Result [C]	Blank Spike %R [D]	Spike Added [E]	Blank Spike Duplicate Result [F]	Blk. Spk Dup. %R [G]	RPD %	Control Limits %R	Control Limits %RPD	Flag
Analytes											
C6-C12 Gasoline Range Hydrocarbons	<15.0	998	970	97	999	967	97	0	70-135	35	
C12-C28 Diesel Range Hydrocarbons	<15.0	998	999	100	999	1010	101	1	70-135	35	

Relative Percent Difference RPD = $200 * |(C-F)/(C+F)|$

Blank Spike Recovery [D] = $100 * (C)/[B]$

Blank Spike Duplicate Recovery [G] = $100 * (F)/[E]$

All results are based on MDL and Validated for QC Purposes



Form 3 - MS / MSD Recoveries



Project Name: Line #101

Work Order #: 457380

Project ID: 1RP-2677

Lab Batch ID: 906664

QC- Sample ID: 456965-001 S

Batch #: 1 Matrix: Sludge

Date Analyzed: 02/11/2013

Date Prepared: 02/11/2013

Analyst: KEB

Reporting Units: mg/kg

MATRIX SPIKE / MATRIX SPIKE DUPLICATE RECOVERY STUDY											
BTEX by EPA 8021B Analytes	Parent Sample Result [A]	Spike Added [B]	Spiked Sample Result [C]	Spiked Sample %R [D]	Spike Added [E]	Duplicate Spiked Sample Result [F]	Spiked Dup. %R [G]	RPD %	Control Limits %R	Control Limits %RPD	Flag
Benzene	<0.00118	0.118	0.0984	83	0.119	0.120	101	20	70-130	35	
Toluene	<0.00236	0.118	0.0958	81	0.119	0.115	97	18	70-130	35	
Ethylbenzene	<0.00118	0.118	0.0861	73	0.119	0.110	92	24	71-129	35	
m_p-Xylenes	<0.00236	0.236	0.163	69	0.237	0.206	87	23	70-135	35	X
o-Xylene	<0.00118	0.118	0.0830	70	0.119	0.104	87	22	71-133	35	X

Lab Batch ID: 906768

QC- Sample ID: 457380-001 S

Batch #: 1 Matrix: Soil

Date Analyzed: 02/12/2013

Date Prepared: 02/12/2013

Analyst: RKO

Reporting Units: mg/kg

MATRIX SPIKE / MATRIX SPIKE DUPLICATE RECOVERY STUDY											
Inorganic Anions by EPA 300/300.1 Analytes	Parent Sample Result [A]	Spike Added [B]	Spiked Sample Result [C]	Spiked Sample %R [D]	Spike Added [E]	Duplicate Spiked Sample Result [F]	Spiked Dup. %R [G]	RPD %	Control Limits %R	Control Limits %RPD	Flag
Chloride	8.79	137	149	102	137	150	103	1	80-120	20	

Lab Batch ID: 906743

QC- Sample ID: 457380-002 S

Batch #: 1 Matrix: Soil

Date Analyzed: 02/12/2013

Date Prepared: 02/11/2013

Analyst: KEB

Reporting Units: mg/kg

MATRIX SPIKE / MATRIX SPIKE DUPLICATE RECOVERY STUDY											
TPH By SW8015 Mod Analytes	Parent Sample Result [A]	Spike Added [B]	Spiked Sample Result [C]	Spiked Sample %R [D]	Spike Added [E]	Duplicate Spiked Sample Result [F]	Spiked Dup. %R [G]	RPD %	Control Limits %R	Control Limits %RPD	Flag
C6-C12 Gasoline Range Hydrocarbons	<16.1	1070	1040	97	1070	1040	97	0	70-135	35	
C12-C28 Diesel Range Hydrocarbons	26.5	1070	1090	99	1070	1090	99	0	70-135	35	

Matrix Spike Percent Recovery [D] = 100*(C-A)/B
Relative Percent Difference RPD = 200*|(C-F)/(C+F)|

Matrix Spike Duplicate Percent Recovery [G] = 100*(F-A)/E

ND = Not Detected, J = Present Below Reporting Limit, B = Present in Blank, NR = Not Requested, I = Interference, NA = Not Applicable
N = See Narrative, EQL = Estimated Quantitation Limit

Xenco Laboratories

CHAIN OF CUSTODY RECORD AND ANALYSIS REQUEST

12600 West I-20 East
Odessa, Texas 79765

Phone: 432-563-1800
Fax: 432-563-1713

Project Manager: Joel Lowry

Project Name: Line #101

Company Name: Basin Environmental Service Technologies, LLC

Project #: (1RP-2677)

Company Address: P.O. Box 301

Project Loc: Lea County, NM

City/State/Zip: Lovington, NM 88260

PO #: Bill Southern Union Gas

Telephone No: (575)396-2378

Fax No: (575) 396-1429

Report Format: ☒ Standard ☐ TRRP ☐ NPDES

Sampler Signature: Joel Lowry

e-mail: pm@basinenv.com, cyndi.inskeep@sug.com, rose.slade@sug.com

(lab use only)

ORDER #: 457380

FIELD CODE

Beginning Depth

Ending Depth

Date Sampled

Time Sampled

Field Filtered

Total # of Containers

Preservation & # of Containers

Matrix

TPH: 418.1 8015M 8015B

TPH: TX 1005 TX 1006

Cations (Ca, Mg, Na, K)

Anions (Cl, SO4, Alkalinity)

SAR / ESP / CEC

Metals: As Ag Ba Cd Cr Pb Hg Se

Volatiles

SemiVolatiles

BTEX 8021B/5030 or BTEX 8260

RCI

N.O.R.M.

CHLORIDES

Total Dissolved Solids

RUSH TAT (Pre-Schedule) 24, 48, 72 hrs

Standard TAT 4 DAY

TT-1 @ 6'

2/6/2013

255

1 X

X

X

X

X

X

X

X

X

X

X

X

X

X

X

X

X

X

X

X

X

TT-1 @ 8'

2/6/2013

320

1 X

X

X

X

X

X

X

X

X

X

X

X

X

X

X

X

X

X

X

X

X

TT-1 @ 10'

2/6/2013

350

1 X

X

X

X

X

X

X

X

X

X

X

X

X

X

X

X

X

X

X

X

X

Special Instructions:

Laboratory Comments:

Sample Containers Intact?

VOCs Free of Headspace?

Labels on container(s)

Custody seals on container(s)

Custody seals on cooler(s)

Sample Hand Delivered

by Sampler/Client Rep.?

by Courier? UPS DHL FedEx Lone Star

Temperature Upon Receipt:

Relinquished by:

Date

Time

Received by:

Date

Time

Relinquished by:

Date

Time

Received by:

Date

Time

Relinquished by:

Date

Time

Received by ELOT:

Date

Time

U D



XENCO Laboratories



Prelogin/Nonconformance Report- Sample Log-In

Client: Southern Union Gas Services- Monahan

Date/ Time Received: 02/08/2013 03:08:00 PM

Work Order #: 457380

Acceptable Temperature Range: 0 - 6 degC

Air and Metal samples Acceptable Range: Ambient

Temperature Measuring device used :

Sample Receipt Checklist

Comments

#1 *Temperature of cooler(s)?	4
#2 *Shipping container in good condition?	Yes
#3 *Samples received on ice?	Yes
#4 *Custody Seals intact on shipping container/ cooler?	Yes
#5 Custody Seals intact on sample bottles?	Yes
#6 *Custody Seals Signed and dated?	Yes
#7 *Chain of Custody present?	Yes
#8 Sample instructions complete on Chain of Custody?	Yes
#9 Any missing/extra samples?	No
#10 Chain of Custody signed when relinquished/ received?	Yes
#11 Chain of Custody agrees with sample label(s)?	Yes
#12 Container label(s) legible and intact?	Yes
#13 Sample matrix/ properties agree with Chain of Custody?	Yes
#14 Samples in proper container/ bottle?	Yes
#15 Samples properly preserved?	Yes
#16 Sample container(s) intact?	Yes
#17 Sufficient sample amount for indicated test(s)?	Yes
#18 All samples received within hold time?	Yes
#19 Subcontract of sample(s)?	Yes
#20 VOC samples have zero headspace (less than 1/4 inch bubble)?	Yes
#21 <2 for all samples preserved with HNO ₃ , HCL, H ₂ SO ₄ ?	Yes
#22 >10 for all samples preserved with NaAsO ₂ +NaOH, ZnAc+NaOH?	Yes

* Must be completed for after-hours delivery of samples prior to placing in the refrigerator

Analyst:

PH Device/Lot#:

Checklist completed by:

Date: 02/11/2013

Checklist reviewed by:

Alejandro M.

Alejandro Montoya

Date: 02/11/2013

Analytical Report 458978
for
Southern Union Gas Services- Monahans

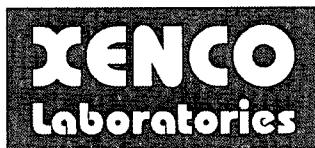
Project Manager: Joel Lowry

Line #101

(1RP-2677)

12-MAR-13

Collected By: Client



12600 West I-20 East Odessa, Texas 79765

Xenco-Houston (EPA Lab code: TX00122):

Texas (T104704215-10-6-TX), Arizona (AZ0765), Arkansas (08-039-0), Connecticut (PH-0102), Florida (E871002)
Illinois (002082), Indiana (C-TX-02), Iowa (392), Kansas (E-10380), Kentucky (45), Louisiana (03054)
New Hampshire (297408), New Jersey (TX007), New York (11763), Oklahoma (9218), Pennsylvania (68-03610)
Rhode Island (LAO00312), USDA (S-44102), DoD (L11-54)

Xenco-Atlanta (EPA Lab Code: GA00046):

Florida (E87429), North Carolina (483), South Carolina (98015), Kentucky (85), DoD (L10-135)
Louisiana (04176), USDA (P330-07-00105)

Xenco-Tampa Mobile (EPA Lab code: FL01212): Florida (E84900)

Xenco-Lakeland: Florida (E84098)

Xenco-Odessa (EPA Lab code: TX00158): Texas (T104704400-TX)

Xenco-Dallas (EPA Lab code: TX01468): Texas (T104704295-TX)

Xenco Phoenix (EPA Lab Code: AZ00901): Arizona (AZ0757)

Xenco-Phoenix Mobile (EPA Lab code: AZ00901): Arizona (AZM757)

Xenco Tucson (EPA Lab code: AZ000989): Arizona (AZ0758)



12-MAR-13

Project Manager: **Joel Lowry**
Southern Union Gas Services- Monahans
801 South Loop 464
Monahans, TX 79756

Reference: XENCO Report No(s): **458978**
Line #101
Project Address: Lea County, NM

Joel Lowry:

We are reporting to you the results of the analyses performed on the samples received under the project name referenced above and identified with the XENCO Report Number(s) 458978. All results being reported under this Report Number apply to the samples analyzed and properly identified with a Laboratory ID number. Subcontracted analyses are identified in this report with either the NELAC certification number of the subcontract lab in the analyst ID field, or the complete subcontracted report attached to this report.

Unless otherwise noted in a Case Narrative, all data reported in this Analytical Report are in compliance with NELAC standards. The uncertainty of measurement associated with the results of analysis reported is available upon request. Should insufficient sample be provided to the laboratory to meet the method and NELAC Matrix Duplicate and Matrix Spike requirements, then the data will be analyzed, evaluated and reported using all other available quality control measures.

The validity and integrity of this report will remain intact as long as it is accompanied by this letter and reproduced in full, unless written approval is granted by XENCO Laboratories. This report will be filed for at least 5 years in our archives after which time it will be destroyed without further notice, unless otherwise arranged with you. The samples received, and described as recorded in Report No. 458978 will be filed for 60 days, and after that time they will be properly disposed without further notice, unless otherwise arranged with you. We reserve the right to return to you any unused samples, extracts or solutions related to them if we consider so necessary (e.g., samples identified as hazardous waste, sample sizes exceeding analytical standard practices, controlled substances under regulated protocols, etc).

We thank you for selecting XENCO Laboratories to serve your analytical needs. If you have any questions concerning this report, please feel free to contact us at any time.

Respectfully,

Nicholas Straccione

Project Manager

*Recipient of the Prestigious Small Business Administration Award of Excellence in 1994.
Certified and approved by numerous States and Agencies.
A Small Business and Minority Status Company that delivers SERVICE and QUALITY*

Houston - Dallas - Odessa - San Antonio - Tampa - Lakeland - Atlanta - Phoenix - Oklahoma - Latin America



Sample Cross Reference 458978



Southern Union Gas Services- Monahans, Monahans, TX

Line #101

Sample Id	Matrix	Date Collected	Sample Depth	Lab Sample Id
South East SW	S	03-06-13 13:00		458978-001
South West SW	S	03-06-13 13:15		458978-002
East SW Middle	S	03-06-13 13:30		458978-003
North West SW	S	03-06-13 13:45		458978-004
North East SW	S	03-06-13 14:00		458978-005
West SW Middle	S	03-06-13 14:15		458978-006
Floor @ 15'	S	03-01-13 13:00		458978-007



CASE NARRATIVE

Client Name: Southern Union Gas Services- Monahans

Project Name: Line #101



Project ID: (IRP-2677)

Work Order Number(s): 458978

Report Date: 12-MAR-13

Date Received: 03/07/2013

Sample receipt non conformances and comments:

None

Sample receipt non conformances and comments per sample:

None



Certificate of Analysis Summary 458978

Southern Union Gas Services- Monahans, Monahans, TX



Project Id: (1RP-2677)

Contact: Joel Lowry

Project Location: Lea County, NM

Project Name: Line #101

Draft

Date Received in Lab: Thu Mar-07-13 04:20 pm

Report Date: 12-MAR-13

Project Manager: Nicholas Straccione

<i>Analysis Requested</i>	<i>Lab Id:</i>	458978-001	458978-002	458978-003	458978-004	458978-005	458978-006
	<i>Field Id:</i>	South East SW	South West SW	East SW Middle	North West SW	North East SW	West SW Middle
	<i>Depth:</i>						
	<i>Matrix:</i>	SOIL	SOIL	SOIL	SOIL	SOIL	SOIL
	<i>Sampled:</i>	Mar-06-13 13:00	Mar-06-13 13:15	Mar-06-13 13:30	Mar-06-13 13:45	Mar-06-13 14:00	Mar-06-13 14:15
BTEX by EPA 8021B	<i>Extracted:</i>	Mar-11-13 15:00	Mar-11-13 15:00	Mar-11-13 15:00	Mar-11-13 15:00	Mar-11-13 15:00	Mar-11-13 15:00
	<i>Analyzed:</i>	Mar-11-13 17:52	Mar-11-13 18:09	Mar-12-13 07:19	Mar-11-13 18:41	Mar-11-13 18:57	Mar-11-13 19:30
	<i>Units/RL:</i>	mg/kg RL	mg/kg RL	mg/kg RL	mg/kg RL	mg/kg RL	mg/kg RL
Benzene		ND 0.00134	ND 0.00137	ND 0.00143	ND 0.00113	ND 0.00135	ND 0.00129
Toluene		ND 0.00269	ND 0.00273	ND 0.00286	ND 0.00227	ND 0.00270	ND 0.00257
Ethylbenzene		ND 0.00134	ND 0.00137	ND 0.00143	ND 0.00113	ND 0.00135	ND 0.00129
m_p-Xylenes		ND 0.00269	ND 0.00273	ND 0.00286	ND 0.00227	ND 0.00270	ND 0.00257
o-Xylene		ND 0.00134	ND 0.00137	ND 0.00143	ND 0.00113	ND 0.00135	ND 0.00129
Total Xylenes		ND 0.00134	ND 0.00137	ND 0.00143	ND 0.00113	ND 0.00135	ND 0.00129
Total BTEX		ND 0.00134	ND 0.00137	ND 0.00143	ND 0.00113	ND 0.00135	ND 0.00129
Percent Moisture	<i>Extracted:</i>						
	<i>Analyzed:</i>	Mar-11-13 17:00	Mar-11-13 17:00	Mar-11-13 17:00	Mar-11-13 17:00	Mar-11-13 17:00	Mar-11-13 17:00
	<i>Units/RL:</i>	% RL	% RL	% RL	% RL	% RL	% RL
Percent Moisture		25.6 1.00	27.2 1.00	30.4 1.00	12.1 1.00	26.4 1.00	22.0 1.00
TPH By SW8015 Mod	<i>Extracted:</i>	Mar-11-13 12:30	Mar-11-13 12:30	Mar-11-13 12:30	Mar-11-13 12:30	Mar-11-13 12:30	Mar-11-13 12:30
	<i>Analyzed:</i>	Mar-11-13 22:50	Mar-11-13 23:17	Mar-11-13 23:44	Mar-12-13 00:10	Mar-12-13 00:37	Mar-12-13 01:04
	<i>Units/RL:</i>	mg/kg RL	mg/kg RL	mg/kg RL	mg/kg RL	mg/kg RL	mg/kg RL
C6-C12 Gasoline Range Hydrocarbons		ND 20.1	ND 20.6	ND 21.5	ND 17.1	ND 20.3	ND 19.3
C12-C28 Diesel Range Hydrocarbons		29.9 20.1	27.2 20.6	ND 21.5	96.7 17.1	50.7 20.3	ND 19.3
C28-C35 Oil Range Hydrocarbons		ND 20.1	ND 20.6	ND 21.5	ND 17.1	ND 20.3	ND 19.3
Total TPH		29.9 20.1	27.2 20.6	ND 21.5	96.7 17.1	50.7 20.3	ND 19.3

This analytical report, and the entire data package it represents, has been made for your exclusive and confidential use. The interpretations and results expressed throughout this analytical report represent the best judgment of XENCO Laboratories. XENCO Laboratories assumes no responsibility and makes no warranty to the end use of the data hereby presented. Our liability is limited to the amount invoiced for this work order unless otherwise agreed to in writing.

Houston - Dallas - San Antonio - Atlanta - Tampa - Boca Raton - Latin America - Odessa - Corpus Christi

Nicholas Straccione
Project Manager



Certificate of Analysis Summary 458978

Southern Union Gas Services- Monahans, Monahans, TX



Project Id: (IRP-2677)

Contact: Joel Lowry

Project Location: Lea County, NM

Project Name: Line #101

Draft

Date Received in Lab: Thu Mar-07-13 04:20 pm

Report Date: 12-MAR-13

Project Manager: Nicholas Straccione

Analysis Requested	Lab Id:	458978-007					
	Field Id:	Floor @ 15'					
	Depth:						
	Matrix:	SOIL					
	Sampled:	Mar-01-13 13:00					
BTEX by EPA 8021B	Extracted:	Mar-11-13 15:00					
	Analyzed:	Mar-11-13 19:46					
	Units/RL:	mg/kg RL					
Benzene		ND 0.00109					
Toluene		ND 0.00218					
Ethylbenzene		0.00323 0.00109					
m_p-Xylenes		0.0107 0.00218					
o-Xylene		0.00610 0.00109					
Total Xylenes		0.0168 0.00109					
Total BTEX		0.0200 0.00109					
Percent Moisture	Extracted:						
	Analyzed:	Mar-11-13 17:00					
	Units/RL:	% RL					
Percent Moisture		8.52 1.00					
TPH By SW8015 Mod	Extracted:	Mar-11-13 12:30					
	Analyzed:	Mar-12-13 01:30					
	Units/RL:	mg/kg RL					
C6-C12 Gasoline Range Hydrocarbons		92.6 16.4					
C12-C28 Diesel Range Hydrocarbons		714 16.4					
C28-C35 Oil Range Hydrocarbons		ND 16.4					
Total TPH		807 16.4					

This analytical report, and the entire data package it represents, has been made for your exclusive and confidential use. The interpretations and results expressed throughout this analytical report represent the best judgment of XENCO Laboratories. XENCO Laboratories assumes no responsibility and makes no warranty to the end use of the data hereby presented. Our liability is limited to the amount invoiced for this work order unless otherwise agreed to in writing.

Houston - Dallas - San Antonio - Atlanta - Tampa - Boca Raton - Latin America - Odessa - Corpus Christi

Nicholas Straccione
Project Manager

Flagging Criteria

- X** In our quality control review of the data a QC deficiency was observed and flagged as noted. MS/MSD recoveries were found to be outside of the laboratory control limits due to possible matrix /chemical interference, or a concentration of target analyte high enough to affect the recovery of the spike concentration. This condition could also affect the relative percent difference in the MS/MSD.
- B** A target analyte or common laboratory contaminant was identified in the method blank. Its presence indicates possible field or laboratory contamination.
- D** The sample(s) were diluted due to targets detected over the highest point of the calibration curve, or due to matrix interference. Dilution factors are included in the final results. The result is from a diluted sample.
- E** The data exceeds the upper calibration limit; therefore, the concentration is reported as estimated.
- F** RPD exceeded lab control limits.
- J** The target analyte was positively identified below the quantitation limit and above the detection limit.
- U** Analyte was not detected.
- L** The LCS data for this analytical batch was reported below the laboratory control limits for this analyte. The department supervisor and QA Director reviewed data. The samples were either reanalyzed or flagged as estimated concentrations.
- H** The LCS data for this analytical batch was reported above the laboratory control limits. Supporting QC Data were reviewed by the Department Supervisor and QA Director. Data were determined to be valid for reporting.
- K** Sample analyzed outside of recommended hold time.
- JN** A combination of the "N" and the "J" qualifier. The analysis indicates that the analyte is "tentatively identified" and the associated numerical value may not be consistent with the amount actually present in the environmental sample.

* Surrogate recovered outside laboratory control limit.

BRL Below Reporting Limit.

RL Reporting Limit

MDL Method Detection Limit **SDL** Sample Detection Limit **LOD** Limit of Detection

PQL Practical Quantitation Limit **MQL** Method Quantitation Limit **LOQ** Limit of Quantitation

DL Method Detection Limit

NC Non-Calculable

+ NELAC certification not offered for this compound.

* (Next to analyte name or method description) = Outside XENCO's scope of NELAC accreditation

Recipient of the Prestigious Small Business Administration Award of Excellence in 1994.

Certified and approved by numerous States and Agencies.

A Small Business and Minority Status Company that delivers SERVICE and QUALITY

Houston - Dallas - San Antonio - Atlanta - Midland/Odessa - Tampa/Lakeland - Phoenix - Latin America

4143 Greenbriar Dr, Stafford, TX 77477
 9701 Harry Hines Blvd , Dallas, TX 75220
 5332 Blackberry Drive, San Antonio TX 78238
 2505 North Falkenburg Rd, Tampa, FL 33619
 12600 West I-20 East, Odessa, TX 79765
 6017 Financial Drive, Norcross, GA 30071
 3725 E. Atlanta Ave, Phoenix, AZ 85040

Phone	Fax
(281) 240-4200	(281) 240-4280
(214) 902 0300	(214) 351-9139
(210) 509-3334	(210) 509-3335
(813) 620-2000	(813) 620-2033
(432) 563-1800	(432) 563-1713
(770) 449-8800	(770) 449-5477
(602) 437-0330	



Form 2 - Surrogate Recoveries

Project Name: Line #101

Work Orders : 458978, 458978

Project ID: (1RP-2677)

Lab Batch #: 908750

Sample: 458978-001 / SMP

Batch: 1 Matrix: Soil

Units: mg/kg

Date Analyzed: 03/11/13 17:52

SURROGATE RECOVERY STUDY

BTEX by EPA 8021B	Amount Found [A]	True Amount [B]	Recovery %R [D]	Control Limits %R	Flags
Analytes					
1,4-Difluorobenzene	0.0331	0.0300	110	80-120	
4-Bromofluorobenzene	0.0295	0.0300	98	80-120	

Lab Batch #: 908750

Sample: 458978-002 / SMP

Batch: 1 Matrix: Soil

Units: mg/kg

Date Analyzed: 03/11/13 18:09

SURROGATE RECOVERY STUDY

BTEX by EPA 8021B	Amount Found [A]	True Amount [B]	Recovery %R [D]	Control Limits %R	Flags
Analytes					
1,4-Difluorobenzene	0.0260	0.0300	87	80-120	
4-Bromofluorobenzene	0.0258	0.0300	86	80-120	

Lab Batch #: 908750

Sample: 458978-004 / SMP

Batch: 1 Matrix: Soil

Units: mg/kg

Date Analyzed: 03/11/13 18:41

SURROGATE RECOVERY STUDY

BTEX by EPA 8021B	Amount Found [A]	True Amount [B]	Recovery %R [D]	Control Limits %R	Flags
Analytes					
1,4-Difluorobenzene	0.0279	0.0300	93	80-120	
4-Bromofluorobenzene	0.0289	0.0300	96	80-120	

Lab Batch #: 908750

Sample: 458978-005 / SMP

Batch: 1 Matrix: Soil

Units: mg/kg

Date Analyzed: 03/11/13 18:57

SURROGATE RECOVERY STUDY

BTEX by EPA 8021B	Amount Found [A]	True Amount [B]	Recovery %R [D]	Control Limits %R	Flags
Analytes					
1,4-Difluorobenzene	0.0271	0.0300	90	80-120	
4-Bromofluorobenzene	0.0294	0.0300	98	80-120	

Lab Batch #: 908750

Sample: 458978-006 / SMP

Batch: 1 Matrix: Soil

Units: mg/kg

Date Analyzed: 03/11/13 19:30

SURROGATE RECOVERY STUDY

BTEX by EPA 8021B	Amount Found [A]	True Amount [B]	Recovery %R [D]	Control Limits %R	Flags
Analytes					
1,4-Difluorobenzene	0.0297	0.0300	99	80-120	
4-Bromofluorobenzene	0.0281	0.0300	94	80-120	

* Surrogate outside of Laboratory QC limits

** Surrogates outside limits; data and surrogates confirmed by reanalysis

*** Poor recoveries due to dilution

Surrogate Recovery [D] = $100 * A / B$

All results are based on MDL and validated for QC purposes.



Form 2 - Surrogate Recoveries

Project Name: Line #101

Work Orders : 458978, 458978

Project ID: (1RP-2677)

Lab Batch #: 908750

Sample: 458978-007 / SMP

Batch: 1 Matrix: Soil

Units: mg/kg

Date Analyzed: 03/11/13 19:46

SURROGATE RECOVERY STUDY

BTEX by EPA 8021B	Amount Found [A]	True Amount [B]	Recovery %R [D]	Control Limits %R	Flags
Analytes					
1,4-Difluorobenzene	0.0251	0.0300	84	80-120	
4-Bromofluorobenzene	0.0291	0.0300	97	80-120	

Lab Batch #: 908752

Sample: 458978-001 / SMP

Batch: 1 Matrix: Soil

Units: mg/kg

Date Analyzed: 03/11/13 22:50

SURROGATE RECOVERY STUDY

TPH By SW8015 Mod	Amount Found [A]	True Amount [B]	Recovery %R [D]	Control Limits %R	Flags
Analytes					
1-Chlorooctane	101	99.7	101	70-135	
o-Terphenyl	53.3	49.9	107	70-135	

Lab Batch #: 908752

Sample: 458978-002 / SMP

Batch: 1 Matrix: Soil

Units: mg/kg

Date Analyzed: 03/11/13 23:17

SURROGATE RECOVERY STUDY

TPH By SW8015 Mod	Amount Found [A]	True Amount [B]	Recovery %R [D]	Control Limits %R	Flags
Analytes					
1-Chlorooctane	110	100	110	70-135	
o-Terphenyl	57.5	50.0	115	70-135	

Lab Batch #: 908752

Sample: 458978-003 / SMP

Batch: 1 Matrix: Soil

Units: mg/kg

Date Analyzed: 03/11/13 23:44

SURROGATE RECOVERY STUDY

TPH By SW8015 Mod	Amount Found [A]	True Amount [B]	Recovery %R [D]	Control Limits %R	Flags
Analytes					
1-Chlorooctane	100	99.8	100	70-135	
o-Terphenyl	52.6	49.9	105	70-135	

Lab Batch #: 908752

Sample: 458978-004 / SMP

Batch: 1 Matrix: Soil

Units: mg/kg

Date Analyzed: 03/12/13 00:10

SURROGATE RECOVERY STUDY

TPH By SW8015 Mod	Amount Found [A]	True Amount [B]	Recovery %R [D]	Control Limits %R	Flags
Analytes					
1-Chlorooctane	100	100	100	70-135	
o-Terphenyl	52.1	50.1	104	70-135	

* Surrogate outside of Laboratory QC limits

** Surrogates outside limits; data and surrogates confirmed by reanalysis

*** Poor recoveries due to dilution

Surrogate Recovery [D] = $100 * A / B$

All results are based on MDL and validated for QC purposes.

Form 2 - Surrogate Recoveries

Project Name: Line #101

Work Orders : 458978, 458978

Project ID: (1RP-2677)

Lab Batch #: 908752

Sample: 458978-005 / SMP

Batch: 1 Matrix: Soil

Units: mg/kg

Date Analyzed: 03/12/13 00:37

SURROGATE RECOVERY STUDY

TPH By SW8015 Mod	Amount Found [A]	True Amount [B]	Recovery %R [D]	Control Limits %R	Flags
Analytes					
1-Chlorooctane	103	99.5	104	70-135	
o-Terphenyl	53.7	49.8	108	70-135	

Lab Batch #: 908752

Sample: 458978-006 / SMP

Batch: 1 Matrix: Soil

Units: mg/kg

Date Analyzed: 03/12/13 01:04

SURROGATE RECOVERY STUDY

TPH By SW8015 Mod	Amount Found [A]	True Amount [B]	Recovery %R [D]	Control Limits %R	Flags
Analytes					
1-Chlorooctane	100	100	100	70-135	
o-Terphenyl	52.4	50.1	105	70-135	

Lab Batch #: 908752

Sample: 458978-007 / SMP

Batch: 1 Matrix: Soil

Units: mg/kg

Date Analyzed: 03/12/13 01:30

SURROGATE RECOVERY STUDY

TPH By SW8015 Mod	Amount Found [A]	True Amount [B]	Recovery %R [D]	Control Limits %R	Flags
Analytes					
1-Chlorooctane	101	99.9	101	70-135	
o-Terphenyl	52.8	50.0	106	70-135	

Lab Batch #: 908750

Sample: 458978-003 / SMP

Batch: 1 Matrix: Soil

Units: mg/kg

Date Analyzed: 03/12/13 07:19

SURROGATE RECOVERY STUDY

BTEX by EPA 8021B	Amount Found [A]	True Amount [B]	Recovery %R [D]	Control Limits %R	Flags
Analytes					
1,4-Difluorobenzene	0.0261	0.0300	87	80-120	
4-Bromofluorobenzene	0.0300	0.0300	100	80-120	

Lab Batch #: 908750

Sample: 634947-1-BLK / BLK

Batch: 1 Matrix: Solid

Units: mg/kg

Date Analyzed: 03/11/13 16:14

SURROGATE RECOVERY STUDY

BTEX by EPA 8021B	Amount Found [A]	True Amount [B]	Recovery %R [D]	Control Limits %R	Flags
Analytes					
1,4-Difluorobenzene	0.0343	0.0300	114	80-120	
4-Bromofluorobenzene	0.0325	0.0300	108	80-120	

* Surrogate outside of Laboratory QC limits

** Surrogates outside limits; data and surrogates confirmed by reanalysis

*** Poor recoveries due to dilution

Surrogate Recovery [D] = $100 * A / B$

All results are based on MDL and validated for QC purposes.



Form 2 - Surrogate Recoveries

Project Name: Line #101

Work Orders : 458978, 458978

Project ID: (1RP-2677)

Lab Batch #: 908752

Sample: 634948-1-BLK / BLK

Batch: 1 Matrix: Solid

Units: mg/kg

Date Analyzed: 03/11/13 21:01

SURROGATE RECOVERY STUDY

TPH By SW8015 Mod Analytes	Amount Found [A]	True Amount [B]	Recovery %R [D]	Control Limits %R	Flags
1-Chlorooctane	103	99.9	103	70-135	
o-Terphenyl	52.8	50.0	106	70-135	

Lab Batch #: 908750

Sample: 634947-1-BKS / BKS

Batch: 1 Matrix: Solid

Units: mg/kg

Date Analyzed: 03/11/13 15:41

SURROGATE RECOVERY STUDY

BTEX by EPA 8021B Analytes	Amount Found [A]	True Amount [B]	Recovery %R [D]	Control Limits %R	Flags
1,4-Difluorobenzene	0.0344	0.0300	115	80-120	
4-Bromofluorobenzene	0.0305	0.0300	102	80-120	

Lab Batch #: 908752

Sample: 634948-1-BKS / BKS

Batch: 1 Matrix: Solid

Units: mg/kg

Date Analyzed: 03/11/13 20:06

SURROGATE RECOVERY STUDY

TPH By SW8015 Mod Analytes	Amount Found [A]	True Amount [B]	Recovery %R [D]	Control Limits %R	Flags
1-Chlorooctane	96.1	99.7	96	70-135	
o-Terphenyl	55.1	49.9	110	70-135	

Lab Batch #: 908750

Sample: 634947-1-BSD / BSD

Batch: 1 Matrix: Solid

Units: mg/kg

Date Analyzed: 03/11/13 15:57

SURROGATE RECOVERY STUDY

BTEX by EPA 8021B Analytes	Amount Found [A]	True Amount [B]	Recovery %R [D]	Control Limits %R	Flags
1,4-Difluorobenzene	0.0300	0.0300	100	80-120	
4-Bromofluorobenzene	0.0331	0.0300	110	80-120	

Lab Batch #: 908752

Sample: 634948-1-BSD / BSD

Batch: 1 Matrix: Solid

Units: mg/kg

Date Analyzed: 03/11/13 20:34

SURROGATE RECOVERY STUDY

TPH By SW8015 Mod Analytes	Amount Found [A]	True Amount [B]	Recovery %R [D]	Control Limits %R	Flags
1-Chlorooctane	94.0	99.9	94	70-135	
o-Terphenyl	54.7	50.0	109	70-135	

* Surrogate outside of Laboratory QC limits

** Surrogates outside limits; data and surrogates confirmed by reanalysis

*** Poor recoveries due to dilution

Surrogate Recovery [D] = $100 * A / B$

All results are based on MDL and validated for QC purposes.



Form 2 - Surrogate Recoveries

Project Name: Line #101

Work Orders : 458978, 458978

Project ID: (1RP-2677)

Lab Batch #: 908750

Sample: 458980-002 S / MS

Batch: 1 Matrix: Soil

Units: mg/kg

Date Analyzed: 03/11/13 21:07

SURROGATE RECOVERY STUDY

BTEX by EPA 8021B	Amount Found [A]	True Amount [B]	Recovery %R [D]	Control Limits %R	Flags
Analytes					
1,4-Difluorobenzene	0.0295	0.0300	98	80-120	
4-Bromofluorobenzene	0.0289	0.0300	96	80-120	

Lab Batch #: 908752

Sample: 458980-002 S / MS

Batch: 1 Matrix: Soil

Units: mg/kg

Date Analyzed: 03/12/13 06:21

SURROGATE RECOVERY STUDY

TPH By SW8015 Mod	Amount Found [A]	True Amount [B]	Recovery %R [D]	Control Limits %R	Flags
Analytes					
1-Chlorooctane	99.9	100	100	70-135	
o-Terphenyl	61.3	50.0	123	70-135	

Lab Batch #: 908750

Sample: 458980-002 SD / MSD

Batch: 1 Matrix: Soil

Units: mg/kg

Date Analyzed: 03/11/13 21:23

SURROGATE RECOVERY STUDY

BTEX by EPA 8021B	Amount Found [A]	True Amount [B]	Recovery %R [D]	Control Limits %R	Flags
Analytes					
1,4-Difluorobenzene	0.0306	0.0300	102	80-120	
4-Bromofluorobenzene	0.0335	0.0300	112	80-120	

Lab Batch #: 908752

Sample: 458980-002 SD / MSD

Batch: 1 Matrix: Soil

Units: mg/kg

Date Analyzed: 03/12/13 06:48

SURROGATE RECOVERY STUDY

TPH By SW8015 Mod	Amount Found [A]	True Amount [B]	Recovery %R [D]	Control Limits %R	Flags
Analytes					
1-Chlorooctane	101	99.9	101	70-135	
o-Terphenyl	56.6	50.0	113	70-135	

* Surrogate outside of Laboratory QC limits

** Surrogates outside limits; data and surrogates confirmed by reanalysis

*** Poor recoveries due to dilution

Surrogate Recovery [D] = $100 * A / B$

All results are based on MDL and validated for QC purposes.



BS / BSD Recoveries



Project Name: Line #101

Work Order #: 458978, 458978

Analyst: KEB

Date Prepared: 03/11/2013

Project ID: (1RP-2677)

Date Analyzed: 03/11/2013

Lab Batch ID: 908750

Sample: 634947-1-BKS

Batch #: 1

Matrix: Solid

Units: mg/kg

BLANK /BLANK SPIKE / BLANK SPIKE DUPLICATE RECOVERY STUDY

BTEX by EPA 8021B	Blank Sample Result [A]	Spike Added [B]	Blank Spike Result [C]	Blank Spike %R [D]	Spike Added [E]	Blank Spike Duplicate Result [F]	Blk. Spk Dup. %R [G]	RPD %	Control Limits %R	Control Limits %RPD	Flag
Analytes											
Benzene	<0.00100	0.100	0.0958	96	0.0994	0.0899	90	6	70-130	35	
Toluene	<0.00200	0.100	0.0910	91	0.0994	0.0847	85	7	70-130	35	
Ethylbenzene	<0.00100	0.100	0.0914	91	0.0994	0.0837	84	9	71-129	35	
m_p-Xylenes	<0.00200	0.200	0.176	88	0.199	0.161	81	9	70-135	35	
o-Xylene	<0.00100	0.100	0.0878	88	0.0994	0.0814	82	8	71-133	35	

Analyst: KEB

Date Prepared: 03/11/2013

Date Analyzed: 03/11/2013

Lab Batch ID: 908752

Sample: 634948-1-BKS

Batch #: 1

Matrix: Solid

Units: mg/kg

BLANK /BLANK SPIKE / BLANK SPIKE DUPLICATE RECOVERY STUDY

TPH By SW8015 Mod	Blank Sample Result [A]	Spike Added [B]	Blank Spike Result [C]	Blank Spike %R [D]	Spike Added [E]	Blank Spike Duplicate Result [F]	Blk. Spk Dup. %R [G]	RPD %	Control Limits %R	Control Limits %RPD	Flag
Analytes											
C6-C12 Gasoline Range Hydrocarbons	<15.0	997	940	94	999	932	93	1	70-135	35	
C12-C28 Diesel Range Hydrocarbons	<15.0	997	984	99	999	982	98	0	70-135	35	

Relative Percent Difference RPD = $200 * |(C-F)/(C+F)|$

Blank Spike Recovery [D] = $100 * (C)/[B]$

Blank Spike Duplicate Recovery [G] = $100 * (F)/[E]$

All results are based on MDL and Validated for QC Purposes



Form 3 - MS / MSD Recoveries



Project Name: Line #101

Work Order #: 458978

Project ID: (IRP-2677)

Lab Batch ID: 908750

QC- Sample ID: 458980-002 S

Batch #: 1 Matrix: Soil

Date Analyzed: 03/11/2013

Date Prepared: 03/11/2013

Analyst: KEB

Reporting Units: mg/kg

MATRIX SPIKE / MATRIX SPIKE DUPLICATE RECOVERY STUDY

BTEX by EPA 8021B Analytes	Parent Sample Result [A]	Spike Added [B]	Spiked Sample Result [C]	Spiked Sample %R [D]	Spike Added [E]	Duplicate Spiked Sample Result [F]	Spiked Dup. %R [G]	RPD %	Control Limits %R	Control Limits %RPD	Flag
Benzene	<0.00122	0.122	0.0985	81	0.122	0.101	83	3	70-130	35	
Toluene	<0.00245	0.122	0.0976	80	0.122	0.0923	76	6	70-130	35	
Ethylbenzene	<0.00122	0.122	0.0949	78	0.122	0.0948	78	0	71-129	35	
m_p-Xylenes	<0.00245	0.245	0.179	73	0.244	0.179	73	0	70-135	35	
o-Xylene	<0.00122	0.122	0.0900	74	0.122	0.0884	72	2	71-133	35	

Lab Batch ID: 908752

QC- Sample ID: 458980-002 S

Batch #: 1 Matrix: Soil

Date Analyzed: 03/12/2013

Date Prepared: 03/11/2013

Analyst: KEB

Reporting Units: mg/kg

MATRIX SPIKE / MATRIX SPIKE DUPLICATE RECOVERY STUDY

TPH By SW8015 Mod Analytes	Parent Sample Result [A]	Spike Added [B]	Spiked Sample Result [C]	Spiked Sample %R [D]	Spike Added [E]	Duplicate Spiked Sample Result [F]	Spiked Dup. %R [G]	RPD %	Control Limits %R	Control Limits %RPD	Flag
C6-C12 Gasoline Range Hydrocarbons	<18.4	1230	1210	98	1230	1260	102	4	70-135	35	
C12-C28 Diesel Range Hydrocarbons	<18.4	1230	1260	102	1230	1330	108	5	70-135	35	

Matrix Spike Percent Recovery $[D] = 100 \times (C-A)/B$
Relative Percent Difference $RPD = 200 \times |(C-F)/(C+F)|$

Matrix Spike Duplicate Percent Recovery $[G] = 100 \times (F-A)/E$

ND = Not Detected, J = Present Below Reporting Limit, B = Present in Blank, NR = Not Requested, I = Interference, NA = Not Applicable
N = See Narrative, EQL = Estimated Quantitation Limit

Project Name: Line #101

Work Order #: 458978

Lab Batch #: 908758

Project ID: (IRP-2677)

Date Analyzed: 03/11/2013 17:00

Date Prepared: 03/11/2013

Analyst: WRU

QC- Sample ID: 458978-001 D

Batch #: 1

Matrix: Soil

Reporting Units: %

SAMPLE / SAMPLE DUPLICATE RECOVERY					
Percent Moisture Analyte	Parent Sample Result [A]	Sample Duplicate Result [B]	RPD	Control Limits %RPD	Flag
Percent Moisture	25.6	25.4	1	20	

Spike Relative Difference RPD $200 * |(B-A)/(B+A)|$
 All Results are based on MDL and validated for QC purposes.
 BRL - Below Reporting Limit

CHAIN OF CUSTODY RECORD AND ANALYSIS REQUEST

12600 West I-20 East
Odessa, Texas 79765

Phone: 432-563-1800
Fax: 432-563-1713

Project Manager: Joel Lowry

Project Name: Line #101

Company Name Basin Environmental Service Technologies, LLC

Project #: (1RP-2677)

Company Address: P.O. Box 301

Project Loc: Lea County, NM

City/State/Zip: Lovington, NM 88260

PO #: Bill Southern Union Gas

Telephone No: (575)396-2378

Fax No: (575) 396-1429

Report Format: ☒ Standard

TRRP

NPDES

Sampler Signature:

e-mail: pm@basinenv.com, cyndi.inskeep@sug.com, rose.slade@sug.com

(lab use only)

ORDER #: 458978

[illegible]**Special Instructions:****Laboratory Comments:**

Relinquished by:	Date	Time	Received by:	Date	Time	Labels on container(s)	Y	N
<i>[Signature]</i>	3-7-13	06:45	<i>[Signature]</i>	3-7-13	06:45	Custody seals on container(s)	Y	N
Relinquished by:	Date	Time	Received by:	Date	Time	Custody seals on cooler(s)	Y	N
<i>[Signature]</i>	3-7-13	16:20	<i>[Signature]</i>	3-7-13	1620	Sample Hand Delivered by Sampler/Client Rep. ?	Y	N
Relinquished by:	Date	Time	Received by:	Date	Time	by Courier? UPS DHL FedEx	Y	N
			<i>[Signature]</i>	3/8/13	15:16	Long Star	Y	N
						Temperature Upon Receipt:	1.6	°C



XENCO Laboratories

Prelogin/Nonconformance Report- Sample Log-In



Client: Southern Union Gas Services- Monahan

Date/ Time Received: 03/07/2013 04:20:00 PM

Work Order #: 458978

Acceptable Temperature Range: 0 - 6 degC

Air and Metal samples Acceptable Range: Ambient

Temperature Measuring device used :

Sample Receipt Checklist

Comments

#1 *Temperature of cooler(s)?	0
#2 *Shipping container in good condition?	Yes
#3 *Samples received on ice?	Yes
#4 *Custody Seals intact on shipping container/ cooler?	Yes
#5 Custody Seals intact on sample bottles?	Yes
#6 *Custody Seals Signed and dated?	Yes
#7 *Chain of Custody present?	Yes
#8 Sample instructions complete on Chain of Custody?	Yes
#9 Any missing/extra samples?	No
#10 Chain of Custody signed when relinquished/ received?	Yes
#11 Chain of Custody agrees with sample label(s)?	Yes
#12 Container label(s) legible and intact?	Yes
#13 Sample matrix/ properties agree with Chain of Custody?	Yes
#14 Samples in proper container/ bottle?	Yes
#15 Samples properly preserved?	Yes
#16 Sample container(s) intact?	Yes
#17 Sufficient sample amount for indicated test(s)?	Yes
#18 All samples received within hold time?	Yes
#19 Subcontract of sample(s)?	Yes
#20 VOC samples have zero headspace (less than 1/4 inch bubble)?	Yes
#21 <2 for all samples preserved with HNO3,HCL, H2SO4?	Yes
#22 >10 for all samples preserved with NaAsO2+NaOH, ZnAc+NaOH?	Yes

* Must be completed for after-hours delivery of samples prior to placing in the refrigerator

Analyst:

PH Device/Lot#:

Checklist completed by: _____

Date: _____

Checklist reviewed by: _____

Date: _____

APPENDIX C

Disposal Manifests

**SUNDANCE SERVICES, Inc.**P.O. Box 1737 Eunice, New Mexico 88231
(575) 394-2511

TICKET No. 237447

LEASE OPERATOR/SHIPPER/COMPANY:

SUG

LEASE NAME:

Line # 101 IRP-2677

TRANSPORTER COMPANY:

Basin Enviro.

TIME 17:36 AM/PM

DATE: 2-25-13

VEHICLE NO: 8

GENERATOR COMPANY

NAME: C. Stanley

CHARGE TO:

SUG

FIG NAME
AND NUMBER

TYPE OF MATERIAL

- | | | |
|---|---|-----------------------------------|
| <input type="checkbox"/> Production Water | <input type="checkbox"/> Drilling Fluids | <input type="checkbox"/> Rinsate |
| <input type="checkbox"/> Tank Bottoms | <input checked="" type="checkbox"/> Contaminated Soil | <input type="checkbox"/> Jet Out |
| <input type="checkbox"/> Solids | <input type="checkbox"/> BS&W Content: | <input type="checkbox"/> Call Out |

Description:

old

RRC or API #

C-133#

VOLUME OF MATERIAL

☐ BBLs☒ YARD 12☐

AS A CONDITION TO SUNDANCE SERVICES, INC.'S ACCEPTANCE OF THE MATERIALS SHIPPED WITH THIS JOB TICKET, OPERATOR/SHIPPER REPRESENTS AND WARRANTS THAT THE WASTE MATERIAL SHIPPED HERewith IS MATERIAL EXEMPT FROM THE RESOURCE, CONSERVATION AND RECOVERY ACT OF 1976, AS AMENDED FROM TIME TO TIME, 40 U.S.C. § 6901, et seq., THE NM HEALTH AND SAF. CODE § 361.001 et seq., AND REGULATIONS RELATED THERETO, BY VIRTUE OF THE EXEMPTION AFFORDED DRILLING FLUIDS, PRODUCED WATERS, AND OTHER WASTE ASSOCIATED WITH THE EXPLORATION, DEVELOPMENT OR PRODUCTION OF CRUDE OIL OR NATURAL GAS OR GEOTHERMAL ENERGY.

ALSO AS A CONDITION TO SUNDANCE SERVICES, INC.'S ACCEPTANCE OF THE MATERIALS SHIPPED WITH THIS JOB TICKET, TRANSPORTER REPRESENTS AND WARRANTS THAT ONLY THE MATERIAL DELIVERED BY OPERATOR/SHIPPER TO TRANSPORTER IS NOW DELIVERED BY TRANSPORTER TO SUNDANCE SERVICES, INC.'S FACILITY FOR DISPOSAL.

THIS WILL CERTIFY that the above Transporter loaded the material represented by this Transporter Statement at the above described location, and that it was tendered by the above described shipper. This will certify that no additional materials were added to this load, and that the material was delivered without incident.

DRIVER:

Signature

FACILITY REPRESENTATIVE:

Signature

White - Sundance

Canary - Sundance Acct #1

Pink - Transporter

No. Order from: TOTALLY SHARP ADVERTISING • 817-380-5401 • www.PromoSupermarket.com

**SUNDANCE SERVICES, Inc.**P.O. Box 1737 Eunice, New Mexico 88231
(575) 394-2511

TICKET No. 237465

LEASE OPERATOR/SHIPPER/COMPANY:

SUG

LEASE NAME:

Line # 101 IRP-2677

TRANSPORTER COMPANY:

Basin Enviro.

TIME 1:58 AM/PM

DATE: 2-28-13

VEHICLE NO: 8

GENERATOR COMPANY

NAME: C. Stanley

CHARGE TO:

SUG

FIG NAME
AND NUMBER

TYPE OF MATERIAL

- | | | |
|---|---|-----------------------------------|
| <input type="checkbox"/> Production Water | <input checked="" type="checkbox"/> Drilling Fluids | <input type="checkbox"/> Rinsate |
| <input type="checkbox"/> Tank Bottoms | <input checked="" type="checkbox"/> Contaminated Soil | <input type="checkbox"/> Jet Out |
| <input type="checkbox"/> Solids | <input type="checkbox"/> BS&W Content: | <input type="checkbox"/> Call Out |

Description:

old

RRC or API #

C-133#

VOLUME OF MATERIAL

☐ BBLs☒ YARD 12☐

AS A CONDITION TO SUNDANCE SERVICES, INC.'S ACCEPTANCE OF THE MATERIALS SHIPPED WITH THIS JOB TICKET, OPERATOR/SHIPPER REPRESENTS AND WARRANTS THAT THE WASTE MATERIAL SHIPPED HERewith IS MATERIAL EXEMPT FROM THE RESOURCE, CONSERVATION AND RECOVERY ACT OF 1976, AS AMENDED FROM TIME TO TIME, 40 U.S.C. § 6901, et seq., THE NM HEALTH AND SAF. CODE § 361.001 et seq., AND REGULATIONS RELATED THERETO, BY VIRTUE OF THE EXEMPTION AFFORDED DRILLING FLUIDS, PRODUCED WATERS, AND OTHER WASTE ASSOCIATED WITH THE EXPLORATION, DEVELOPMENT OR PRODUCTION OF CRUDE OIL OR NATURAL GAS OR GEOTHERMAL ENERGY.

ALSO AS A CONDITION TO SUNDANCE SERVICES, INC.'S ACCEPTANCE OF THE MATERIALS SHIPPED WITH THIS JOB TICKET, TRANSPORTER REPRESENTS AND WARRANTS THAT ONLY THE MATERIAL DELIVERED BY OPERATOR/SHIPPER TO TRANSPORTER IS NOW DELIVERED BY TRANSPORTER TO SUNDANCE SERVICES, INC.'S FACILITY FOR DISPOSAL.

THIS WILL CERTIFY that the above Transporter loaded the material represented by this Transporter Statement at the above described location, and that it was tendered by the above described shipper. This will certify that no additional materials were added to this load, and that the material was delivered without incident.

DRIVER:

Signature

FACILITY REPRESENTATIVE:

Signature

White - Sundance

Canary - Sundance Acct #1

Pink - Transporter

No. Order from: TOTALLY SHARP ADVERTISING • 817-380-5401 • www.PromoSupermarket.com

**SUNDANCE SERVICES, Inc.**P.O. Box 1737 Eunice, New Mexico 88231
(575) 394-2511TICKET No. **237597**

LEASE OPERATOR/SHIPPER/COMPANY: **SUG**
LEASE NAME: **Line 101-IRP-2677**
TRANSPORTER COMPANY: **Pink Environmental** TIME: **1:36 AM/PM**
DATE: **3-6-13** VEHICLE NO: **8** GENERATOR COMPANY NAME: **C. Stanley**
CHARGE TO: **SUG** TAG NAME AND NUMBER

TYPE OF MATERIAL

☐ Production Water ☐ Drilling Fluids ☐ Rinsate
☐ Tank Bottoms ☒ Contaminated Soil ☐ Jet Out
☐ Solids ☐ BS&W Contents ☐ Call Out

Description: **LID**RRC or API # **C-133#**VOLUME OF MATERIAL ☐ BBLs ☒ YARD **12** ☐

AS A CONDITION TO SUNDANCE SERVICES, INC.'S ACCEPTANCE OF THE MATERIALS SHIPPED WITH THIS JOB TICKET, OPERATOR/SHIPPER REPRESENTS AND WARRANTS THAT THE WASTE MATERIAL SHIPPED HEREWITH IS MATERIAL EXEMPT FROM THE RESOURCE, CONSERVATION AND RECOVERY ACT OF 1976, AS AMENDED FROM TIME TO TIME, 40 U.S.C. § 6901, et seq., THE NM HEALTH AND SAF. CODE § 361.001 et seq., AND REGULATIONS RELATED THERETO, BY VIRTUE OF THE EXEMPTION AFFORDED DRILLING FLUIDS, PRODUCED WATERS, AND OTHER WASTE ASSOCIATED WITH THE EXPLORATION, DEVELOPMENT OR PRODUCTION OF CRUDE OIL OR NATURAL GAS OR GEOTHERMAL ENERGY.

ALSO AS A CONDITION TO SUNDANCE SERVICES, INC.'S ACCEPTANCE OF THE MATERIALS SHIPPED WITH THIS JOB TICKET, TRANSPORTER REPRESENTS AND WARRANTS THAT ONLY THE MATERIAL DELIVERED BY OPERATOR/SHIPPER TO TRANSPORTER IS NOW DELIVERED BY TRANSPORTER TO SUNDANCE SERVICES, INC.'S FACILITY FOR DISPOSAL.

THIS WILL CERTIFY that the above transporter loaded the material represented by this Transporter Statement at the above described location, and that it was tendered by the above described shipper. This will certify that no additional materials were added to this load, and that the material was delivered without incident.

DRIVER: **[Signature]**FACILITY REPRESENTATIVE: **[Signature]**

White - Sundance Canary - Sundance Acct #1 Pink - Transporter

Re-order from: TULLY SHAW SUPPLY (505) 432-586-5401 • www.PromoSupermarket.com

**SUNDANCE SERVICES, Inc.**P.O. Box 1737 Eunice, New Mexico 88231
(575) 394-2511TICKET No. **237576**

LEASE OPERATOR/SHIPPER/COMPANY: **SUG**
LEASE NAME: **Line 1-IRP-2677**
TRANSPORTER COMPANY: **Pink Environmental** TIME: **1:47 AM/PM**
DATE: **3-6-13** VEHICLE NO: **8** GENERATOR COMPANY NAME: **C. Stanley**
CHARGE TO: **SUG** TAG NAME AND NUMBER

TYPE OF MATERIAL

☐ Production Water ☒ Drilling Fluids ☐ Rinsate
☐ Tank Bottoms ☒ Contaminated Soil ☐ Jet Out
☐ Solids ☐ BS&W Contents ☐ Call Out

Description: **DID**RRC or API # **C-133#**VOLUME OF MATERIAL ☐ BBLs ☒ YARD **12** ☐

AS A CONDITION TO SUNDANCE SERVICES, INC.'S ACCEPTANCE OF THE MATERIALS SHIPPED WITH THIS JOB TICKET, OPERATOR/SHIPPER REPRESENTS AND WARRANTS THAT THE WASTE MATERIAL SHIPPED HEREWITH IS MATERIAL EXEMPT FROM THE RESOURCE, CONSERVATION AND RECOVERY ACT OF 1976, AS AMENDED FROM TIME TO TIME, 40 U.S.C. § 6901, et seq., THE NM HEALTH AND SAF. CODE § 361.001 et seq., AND REGULATIONS RELATED THERETO, BY VIRTUE OF THE EXEMPTION AFFORDED DRILLING FLUIDS, PRODUCED WATERS, AND OTHER WASTE ASSOCIATED WITH THE EXPLORATION, DEVELOPMENT OR PRODUCTION OF CRUDE OIL OR NATURAL GAS OR GEOTHERMAL ENERGY.

ALSO AS A CONDITION TO SUNDANCE SERVICES, INC.'S ACCEPTANCE OF THE MATERIALS SHIPPED WITH THIS JOB TICKET, TRANSPORTER REPRESENTS AND WARRANTS THAT ONLY THE MATERIAL DELIVERED BY OPERATOR/SHIPPER TO TRANSPORTER IS NOW DELIVERED BY TRANSPORTER TO SUNDANCE SERVICES, INC.'S FACILITY FOR DISPOSAL.

THIS WILL CERTIFY that the above transporter loaded the material represented by this Transporter Statement at the above described location, and that it was tendered by the above described shipper. This will certify that no additional materials were added to this load, and that the material was delivered without incident.

DRIVER: **[Signature]**FACILITY REPRESENTATIVE: **[Signature]**

White - Sundance Canary - Sundance Acct #1 Pink - Transporter

Re-order from: TULLY SHAW SUPPLY (505) 432-586-5401 • www.PromoSupermarket.com

**SUNDANCE SERVICES, Inc.**P.O. Box 1737 Eunice, New Mexico 88231
(575) 394-2511

TICKET No. 237564

LEASE OPERATOR/SHIPPER/COMPANY: SUGLEASE NAME: Line #161 - IRP-2677TRANSPORTER COMPANY: Basin E. Univ.TIME 10:30 AM/PMDATE: 3-01-13 VEHICLE NO: 8GENERATOR COMPANY
AGENT'S NAME: C. StanleyCHARGE TO: SUGRIG NAME
AND NUMBER

TYPE OF MATERIAL

- | | | |
|---|---|-----------------------------------|
| <input type="checkbox"/> Production Water | <input type="checkbox"/> Drilling Fluids | <input type="checkbox"/> Rinsate |
| <input type="checkbox"/> Tank Bottoms | <input checked="" type="checkbox"/> Contaminated Soil | <input type="checkbox"/> Jet Out |
| <input type="checkbox"/> Solids | <input type="checkbox"/> BS&W Content: | <input type="checkbox"/> Call Out |

Description: OLD

RRC or API #

C-133#

VOLUME OF MATERIAL

☐ BBLs☒ YARD12☐

AS A CONDITION TO SUNDANCE SERVICES, INC.'S ACCEPTANCE OF THE MATERIALS SHIPPED WITH THIS JOB TICKET, OPERATOR/SHIPPER REPRESENTS AND WARRANTS THAT THE WASTE MATERIAL SHIPPED HERewith IS MATERIAL EXEMPT FROM THE RESOURCE, CONSERVATION AND RECOVERY ACT OF 1976, AS AMENDED FROM TIME TO TIME, 40 U.S.C. § 6901, et seq., THE NM HEALTH AND SAF. CODE § 361.001 et seq., AND REGULATIONS RELATED THERETO, BY VIRTUE OF THE EXEMPTION AFFORDED DRILLING FLUIDS, PRODUCED WATERS, AND OTHER WASTE ASSOCIATED WITH THE EXPLORATION, DEVELOPMENT OR PRODUCTION OF CRUDE OIL OR NATURAL GAS OR GEOTHERMAL ENERGY.

ALSO AS A CONDITION TO SUNDANCE SERVICES, INC.'S ACCEPTANCE OF THE MATERIALS SHIPPED WITH THIS JOB TICKET, TRANSPORTER REPRESENTS AND WARRANTS THAT ONLY THE MATERIAL DELIVERED BY OPERATOR/SHIPPER TO TRANSPORTER IS NOW DELIVERED BY TRANSPORTER TO SUNDANCE SERVICES, INC.'S FACILITY FOR DISPOSAL.

THIS WILL CERTIFY that the above Transporter loaded the material represented by this Transporter Statement at the above described location, and that it was tendered by the above described shipper. This will certify that no additional materials were added to this load, and that the material was delivered without incident.

DRIVER: M. Brown

(SIGNATURE)

FACILITY REPRESENTATIVE: A. Sta Cruz

(SIGNATURE)

White - Sundance

Canary - Sundance Acct #1

Pink - Transporter

Re-order from: TOTALLY SHARP ADVERTISING • 432-586-5401 • www.PromoSupermarket.com

**SUNDANCE SERVICES, Inc.**P.O. Box 1737 Eunice, New Mexico 88231
(575) 394-2511

TICKET No. 237554

LEASE OPERATOR/SHIPPER/COMPANY: SUGLEASE NAME: Line #161 - IRP-2677TRANSPORTER COMPANY: Basin E. Univ.TIME 9:26 AM/PMDATE: 3-01-13 VEHICLE NO: 8GENERATOR COMPANY
AGENT'S NAME: C. StanleyCHARGE TO: SUGRIG NAME
AND NUMBER

TYPE OF MATERIAL

- | | | |
|---|---|-----------------------------------|
| <input type="checkbox"/> Production Water | <input type="checkbox"/> Drilling Fluids | <input type="checkbox"/> Rinsate |
| <input type="checkbox"/> Tank Bottoms | <input checked="" type="checkbox"/> Contaminated Soil | <input type="checkbox"/> Jet Out |
| <input type="checkbox"/> Solids | <input type="checkbox"/> BS&W Content: | <input type="checkbox"/> Call Out |

Description: OLD

RRC or API #

C-133#

VOLUME OF MATERIAL

☐ BBLs☒ YARD12☐

AS A CONDITION TO SUNDANCE SERVICES, INC.'S ACCEPTANCE OF THE MATERIALS SHIPPED WITH THIS JOB TICKET, OPERATOR/SHIPPER REPRESENTS AND WARRANTS THAT THE WASTE MATERIAL SHIPPED HERewith IS MATERIAL EXEMPT FROM THE RESOURCE, CONSERVATION AND RECOVERY ACT OF 1976, AS AMENDED FROM TIME TO TIME, 40 U.S.C. § 6901, et seq., THE NM HEALTH AND SAF. CODE § 361.001 et seq., AND REGULATIONS RELATED THERETO, BY VIRTUE OF THE EXEMPTION AFFORDED DRILLING FLUIDS, PRODUCED WATERS, AND OTHER WASTE ASSOCIATED WITH THE EXPLORATION, DEVELOPMENT OR PRODUCTION OF CRUDE OIL OR NATURAL GAS OR GEOTHERMAL ENERGY.

ALSO AS A CONDITION TO SUNDANCE SERVICES, INC.'S ACCEPTANCE OF THE MATERIALS SHIPPED WITH THIS JOB TICKET, TRANSPORTER REPRESENTS AND WARRANTS THAT ONLY THE MATERIAL DELIVERED BY OPERATOR/SHIPPER TO TRANSPORTER IS NOW DELIVERED BY TRANSPORTER TO SUNDANCE SERVICES, INC.'S FACILITY FOR DISPOSAL.

THIS WILL CERTIFY that the above Transporter loaded the material represented by this Transporter Statement at the above described location, and that it was tendered by the above described shipper. This will certify that no additional materials were added to this load, and that the material was delivered without incident.

DRIVER: M. Brown

(SIGNATURE)

FACILITY REPRESENTATIVE: A. Sta Cruz

(SIGNATURE)

White - Sundance

Canary - Sundance Acct #1

Pink - Transporter

Re-order from: TOTALLY SHARP ADVERTISING • 432-586-5401 • www.PromoSupermarket.com

SUNDANCE SERVICES, Inc.
P.O. Box 1737 Eunice, New Mexico 88231
(575) 394-2511

TICKET NO. 237863

LEASE OPERATOR/SHIPPER/COMPANY: SUG
LEASE NAME: Line 161 - IRP-2677
TRANSPORTER COMPANY: Basin Services, Inc. TIME: 2:42 AM/PM
DATE: 3-1-13 VEHICLE NO: 8 GENERATOR COMPANY NAME: C. Stanley
CHARGE TO: SUG RIG NAME AND NUMBER: J

TYPE OF MATERIAL

<input type="checkbox"/> Production Water	<input type="checkbox"/> Drilling Fluids	<input type="checkbox"/> Rinsate
<input type="checkbox"/> Tank Bottoms	<input checked="" type="checkbox"/> Contaminated Soil	<input type="checkbox"/> Jet Out
<input type="checkbox"/> Solids	<input type="checkbox"/> BSW Content:	<input type="checkbox"/> Call Out

Description: E/D

RRC or API # C-133#

VOLUME OF MATERIAL ☐ BBLs X YARD 12 ☐

AS A CONDITION TO SUNDANCE SERVICES, INC.'S ACCEPTANCE OF THE MATERIALS SHIPPED WITH THIS JOB TICKET, OPERATOR/SHIPPER REPRESENTS AND WARRANTS THAT THE WASTE MATERIAL SHIPPED HERewith IS MATERIAL EXEMPT FROM THE RESOURCE, CONSERVATION AND RECOVERY ACT OF 1976, AS AMENDED FROM TIME TO TIME, 40 U.S.C. § 6901, et seq., THE NM HEALTH AND SAF. CODE § 361.001 et seq., AND REGULATIONS RELATED THERETO, BY VIRTUE OF THE EXEMPTION AFFORDED DRILLING FLUIDS, PRODUCED WATERS, AND OTHER WASTE ASSOCIATED WITH THE EXPLORATION, DEVELOPMENT OR PRODUCTION OF CRUDE OIL OR NATURAL GAS OR GEOTHERMAL ENERGY.

ALSO AS A CONDITION TO SUNDANCE SERVICES, INC.'S ACCEPTANCE OF THE MATERIALS SHIPPED WITH THIS JOB TICKET, TRANSPORTER REPRESENTS AND WARRANTS THAT ONLY THE MATERIAL DELIVERED BY OPERATOR/SHIPPER TO TRANSPORTER IS NOW DELIVERED BY TRANSPORTER TO SUNDANCE SERVICES, INC.'S FACILITY FOR DISPOSAL.

THIS WILL CERTIFY that the above Transporter loaded the material represented by this Transporter Statement at the above described location, and that it was tendered by the above described shipper. This will certify that no additional materials were added to this load, and that the material was delivered without incident.

DRIVER: [Signature]
FACILITY REPRESENTATIVE: [Signature]

White - Sundance Canary - Sundance Acct #1 Pink - Transporter

Re-printed from: TOTALLY SHARP ADVERTISING • 432-340-5401 • www.PromoSupermarket.com

SUNDANCE SERVICES, Inc.
P.O. Box 1737 Eunice, New Mexico 88231
(575) 394-2511

TICKET NO. 237840

LEASE OPERATOR/SHIPPER/COMPANY: SUG
LEASE NAME: Line 161 - IRP-2677
TRANSPORTER COMPANY: Basin Services, Inc. TIME: 1:32 AM/PM
DATE: 3-1-13 VEHICLE NO: 8 GENERATOR COMPANY NAME: C. Stanley
CHARGE TO: SUG RIG NAME AND NUMBER: J

TYPE OF MATERIAL

<input type="checkbox"/> Production Water	<input type="checkbox"/> Drilling Fluids	<input type="checkbox"/> Rinsate
<input type="checkbox"/> Tank Bottoms	<input checked="" type="checkbox"/> Contaminated Soil	<input type="checkbox"/> Jet Out
<input type="checkbox"/> Solids	<input type="checkbox"/> BSW Content:	<input type="checkbox"/> Call Out

Description: O/D

RRC or API # C-133#

VOLUME OF MATERIAL ☐ BBLs X YARD 12 ☐

AS A CONDITION TO SUNDANCE SERVICES, INC.'S ACCEPTANCE OF THE MATERIALS SHIPPED WITH THIS JOB TICKET, OPERATOR/SHIPPER REPRESENTS AND WARRANTS THAT THE WASTE MATERIAL SHIPPED HERewith IS MATERIAL EXEMPT FROM THE RESOURCE, CONSERVATION AND RECOVERY ACT OF 1976, AS AMENDED FROM TIME TO TIME, 40 U.S.C. § 6901, et seq., THE NM HEALTH AND SAF. CODE § 361.001 et seq., AND REGULATIONS RELATED THERETO, BY VIRTUE OF THE EXEMPTION AFFORDED DRILLING FLUIDS, PRODUCED WATERS, AND OTHER WASTE ASSOCIATED WITH THE EXPLORATION, DEVELOPMENT OR PRODUCTION OF CRUDE OIL OR NATURAL GAS OR GEOTHERMAL ENERGY.

ALSO AS A CONDITION TO SUNDANCE SERVICES, INC.'S ACCEPTANCE OF THE MATERIALS SHIPPED WITH THIS JOB TICKET, TRANSPORTER REPRESENTS AND WARRANTS THAT ONLY THE MATERIAL DELIVERED BY OPERATOR/SHIPPER TO TRANSPORTER IS NOW DELIVERED BY TRANSPORTER TO SUNDANCE SERVICES, INC.'S FACILITY FOR DISPOSAL.

THIS WILL CERTIFY that the above Transporter loaded the material represented by this Transporter Statement at the above described location, and that it was tendered by the above described shipper. This will certify that no additional materials were added to this load, and that the material was delivered without incident.

DRIVER: [Signature]
FACILITY REPRESENTATIVE: [Signature]

White - Sundance Canary - Sundance Acct #1 Pink - Transporter

Re-printed from: TOTALLY SHARP ADVERTISING • 432-340-5401 • www.PromoSupermarket.com

**SUNDANCE SERVICES, Inc.**P.O. Box 1737 Eunice, New Mexico 88231
(575) 394-2511

TICKET No: 287031

LEASE OPERATOR/SHIPPER/COMPANY: SUG
LEASE NAME: Line 101 - 1RP-2677
TRANSPORTER COMPANY: Basin Service TIME 12:15 AM/PM
DATE: 3-4-13 VEHICLE NO: 8 GENERATOR COMPANY NAME: C. Stanley
CHARGE TO: SUG REG NAME AND NUMBER

TYPE OF MATERIAL

☐ Production Water ☐ Drilling Fluids ☐ Rinsate
☐ Tank Bottoms ☒ Contaminated Soil ☐ Jet Out
☐ Solids ☐ BS&W Content: ☐ Call Out

Description: C/D

RRC or API #

C-133#

VOLUME OF MATERIAL ☐ BBLS ☒ YARD 12 ☐

AS A CONDITION TO SUNDANCE SERVICES, INC.'S ACCEPTANCE OF THE MATERIALS SHIPPED WITH THIS JOB TICKET, OPERATOR/SHIPPER REPRESENTS AND WARRANTS THAT THE WASTE MATERIAL SHIPPED HEREWITH IS MATERIAL EXEMPT FROM THE RESOURCE, CONSERVATION AND RECOVERY ACT OF 1976, AS AMENDED FROM TIME TO TIME, 40 U.S.C. § 6901, et seq., THE NM HEALTH AND SAF. CODE § 361.001 et seq., AND REGULATIONS RELATED THERETO, BY VIRTUE OF THE EXEMPTION AFFORDED DRILLING FLUIDS, PRODUCED WATERS, AND OTHER WASTE ASSOCIATED WITH THE EXPLORATION, DEVELOPMENT OR PRODUCTION OF CRUDE OIL OR NATURAL GAS OR GEOTHERMAL ENERGY.

ALSO AS A CONDITION TO SUNDANCE SERVICES, INC.'S ACCEPTANCE OF THE MATERIALS SHIPPED WITH THIS JOB TICKET, TRANSPORTER REPRESENTS AND WARRANTS THAT ONLY THE MATERIAL DELIVERED BY OPERATOR/SHIPPER TO TRANSPORTER IS NOW DELIVERED BY TRANSPORTER TO SUNDANCE SERVICES, INC.'S FACILITY FOR DISPOSAL.

THIS WILL CERTIFY that the above Transporter loaded the material represented by this Transporter Statement at the above described location, and that it was tendered by the above described shipper. This will certify that no additional materials were added to this load, and that the material was delivered without incident.

DRIVER: [Signature]FACILITY REPRESENTATIVE: [Signature]

White - Sundance

Canary - Sundance Acct #1

Pink - Transporter

Re-order from: TOTALLY SHARP ALUMINUM • 432-589-5401 • www.PromoSupermarket.com

**SUNDANCE SERVICES, Inc.**P.O. Box 1737 Eunice, New Mexico 88231
(575) 394-2511

TICKET No: 287017

LEASE OPERATOR/SHIPPER/COMPANY: SUG
LEASE NAME: Line 101 - 1RP-2677
TRANSPORTER COMPANY: Basin Service TIME 16:55 AM/PM
DATE: 3-4-13 VEHICLE NO: 8 GENERATOR COMPANY NAME: C. Stanley
CHARGE TO: SUG REG NAME AND NUMBER

TYPE OF MATERIAL

☐ Production Water ☐ Drilling Fluids ☐ Rinsate
☐ Tank Bottoms ☒ Contaminated Soil ☐ Jet Out
☐ Solids ☐ BS&W Content: ☐ Call Out

Description: C/D

RRC or API #

C-133#

VOLUME OF MATERIAL ☐ BBLS ☒ YARD 12 ☐

AS A CONDITION TO SUNDANCE SERVICES, INC.'S ACCEPTANCE OF THE MATERIALS SHIPPED WITH THIS JOB TICKET, OPERATOR/SHIPPER REPRESENTS AND WARRANTS THAT THE WASTE MATERIAL SHIPPED HEREWITH IS MATERIAL EXEMPT FROM THE RESOURCE, CONSERVATION AND RECOVERY ACT OF 1976, AS AMENDED FROM TIME TO TIME, 40 U.S.C. § 6901, et seq., THE NM HEALTH AND SAF. CODE § 361.001 et seq., AND REGULATIONS RELATED THERETO, BY VIRTUE OF THE EXEMPTION AFFORDED DRILLING FLUIDS, PRODUCED WATERS, AND OTHER WASTE ASSOCIATED WITH THE EXPLORATION, DEVELOPMENT OR PRODUCTION OF CRUDE OIL OR NATURAL GAS OR GEOTHERMAL ENERGY.

ALSO AS A CONDITION TO SUNDANCE SERVICES, INC.'S ACCEPTANCE OF THE MATERIALS SHIPPED WITH THIS JOB TICKET, TRANSPORTER REPRESENTS AND WARRANTS THAT ONLY THE MATERIAL DELIVERED BY OPERATOR/SHIPPER TO TRANSPORTER IS NOW DELIVERED BY TRANSPORTER TO SUNDANCE SERVICES, INC.'S FACILITY FOR DISPOSAL.

THIS WILL CERTIFY that the above Transporter loaded the material represented by this Transporter Statement at the above described location, and that it was tendered by the above described shipper. This will certify that no additional materials were added to this load, and that the material was delivered without incident.

DRIVER: [Signature]FACILITY REPRESENTATIVE: [Signature]

White - Sundance

Canary - Sundance Acct #1

Pink - Transporter

Re-order from: TOTALLY SHARP ALUMINUM • 432-589-5401 • www.PromoSupermarket.com

**SUNDANCE SERVICES, Inc.**P.O. Box 1737 Eunice, New Mexico 88231
(575) 394-2511

TICKET NO. 297950

LEASE OPERATOR/SHIPPER/COMPANY: SLIG
LEASE NAME: Line 101 - IRP 2677
TRANSPORTER COMPANY: Basin Empire TIME 9:37 AM/PM
DATE: 3-5-13 VEHICLE NO: 8 GENERATOR COMPANY NAME: A. Stanley
CHARGE TO: SLIG RIG NAME AND NUMBER

TYPE OF MATERIAL

☐ Production Water ☐ Drilling Fluids ☐ Rinsate
☐ Tank Bottoms ☒ Contaminated Soil ☐ Jet Out
☐ Solids ☐ BS&W Content: ☐ Call Out

Description: CID

RRC or API #

C-133#

VOLUME OF MATERIAL | BBLs. 12 : 12 YARD 12 : 11

AS A CONDITION TO SUNDANCE SERVICES, INC.'S ACCEPTANCE OF THE MATERIALS SHIPPED WITH THIS JOB TICKET, OPERATOR/SHIPPER REPRESENTS AND WARRANTS THAT THE WASTE MATERIAL SHIPPED HEREWITH IS MATERIAL EXEMPT FROM THE RESOURCE, CONSERVATION AND RECOVERY ACT OF 1976, AS AMENDED FROM TIME TO TIME, 40 U.S.C. § 6901, et seq., THE NM HEALTH AND SAF. CODE § 361.001 et seq., AND REGULATIONS RELATED THERETO, BY VIRTUE OF THE EXEMPTION AFFORDED DRILLING FLUIDS, PRODUCED WATERS, AND OTHER WASTE ASSOCIATED WITH THE EXPLORATION, DEVELOPMENT OR PRODUCTION OF CRUDE OIL OR NATURAL GAS OR GEOTHERMAL ENERGY.

ALSO AS A CONDITION TO SUNDANCE SERVICES, INC.'S ACCEPTANCE OF THE MATERIALS SHIPPED WITH THIS JOB TICKET, TRANSPORTER REPRESENTS AND WARRANTS THAT ONLY THE MATERIAL DELIVERED BY OPERATOR/SHIPPER TO TRANSPORTER IS NOW DELIVERED BY TRANSPORTER TO SUNDANCE SERVICES, INC.'S FACILITY FOR DISPOSAL.

THIS WILL CERTIFY that the above Transporter loaded the material represented by this Transporter Statement at the above described location, and that it was tendered by the above described shipper. This will certify that no additional materials were added to this load, and that the material was delivered without incident.

DRIVER: A. Stanley

(SIGNATURE)

FACILITY REPRESENTATIVE: A. Stanley

(SIGNATURE)

White - Sundance

Canary - Sundance Acct #1

Pink - Transporter

Re-order from: TULLY'S SHARP ADVERTISING • 432-586-5401 • www.PromoSupermarket.com

**SUNDANCE SERVICES, Inc.**P.O. Box 1737 Eunice, New Mexico 88231
(575) 394-2511

TICKET No. 298010

LEASE OPERATOR/SHIPPER/COMPANY: SLIG
LEASE NAME: Line 101 - IRP 2677
TRANSPORTER COMPANY: Basin Empire TIME 1:32 AM/PM
DATE: 3-5-13 VEHICLE NO: 8 GENERATOR COMPANY NAME: A. Stanley
CHARGE TO: SLIG RIG NAME AND NUMBER

TYPE OF MATERIAL

☐ Production Water ☐ Drilling Fluids ☐ Rinsate
☐ Tank Bottoms ☒ Contaminated Soil ☐ Jet Out
☐ Solids ☐ BS&W Content: ☐ Call Out

Description: CID

RRC or API #

C-133#

VOLUME OF MATERIAL | BBLs. 12 : 12 YARD 12 : 11

AS A CONDITION TO SUNDANCE SERVICES, INC.'S ACCEPTANCE OF THE MATERIALS SHIPPED WITH THIS JOB TICKET, OPERATOR/SHIPPER REPRESENTS AND WARRANTS THAT THE WASTE MATERIAL SHIPPED HEREWITH IS MATERIAL EXEMPT FROM THE RESOURCE, CONSERVATION AND RECOVERY ACT OF 1976, AS AMENDED FROM TIME TO TIME, 40 U.S.C. § 6901, et seq., THE NM HEALTH AND SAF. CODE § 361.001 et seq., AND REGULATIONS RELATED THERETO, BY VIRTUE OF THE EXEMPTION AFFORDED DRILLING FLUIDS, PRODUCED WATERS, AND OTHER WASTE ASSOCIATED WITH THE EXPLORATION, DEVELOPMENT OR PRODUCTION OF CRUDE OIL OR NATURAL GAS OR GEOTHERMAL ENERGY.

ALSO AS A CONDITION TO SUNDANCE SERVICES, INC.'S ACCEPTANCE OF THE MATERIALS SHIPPED WITH THIS JOB TICKET, TRANSPORTER REPRESENTS AND WARRANTS THAT ONLY THE MATERIAL DELIVERED BY OPERATOR/SHIPPER TO TRANSPORTER IS NOW DELIVERED BY TRANSPORTER TO SUNDANCE SERVICES, INC.'S FACILITY FOR DISPOSAL.

THIS WILL CERTIFY that the above Transporter loaded the material represented by this Transporter Statement at the above described location, and that it was tendered by the above described shipper. This will certify that no additional materials were added to this load, and that the material was delivered without incident.

DRIVER: A. Stanley

(SIGNATURE)

FACILITY REPRESENTATIVE: A. Stanley

(SIGNATURE)

White - Sundance

Canary - Sundance Acct #1

Pink - Transporter

Re-order from: TULLY'S SHARP ADVERTISING • 432-586-5401 • www.PromoSupermarket.com

**SUNDANCE SERVICES, Inc.**P.O. Box 1737 Eunice, New Mexico 88231
(575) 394-2511

TICKET No. 237938

LEASE OPERATOR/SHIPPER/COMPANY: SUG
 LEASE NAME: Line 100 IRP 2677
 TRANSPORTER COMPANY: Basin Service TIME 12:22 AM/PM
 DATE: 3-5-13 VEHICLE NO: 8 GENERATOR COMPANY NAME: C. Stanley
 CHARGE TO: 5114 RIG NAME AND NUMBER

TYPE OF MATERIAL

- ☐ Production Water ☐ Drilling Fluids ☐ Rinsate
☐ Tank Bottoms ☒ Contaminated Soil ☐ Jet Out
☐ Solids ☐ BS&W Content: ☐ Call Out

Description: DID

RRC or API #

C-133#

VOLUME OF MATERIAL ☐ BBLs ☒ YARD 12 ☐

AS A CONDITION TO SUNDANCE SERVICES, INC.'S ACCEPTANCE OF THE MATERIALS SHIPPED WITH THIS JOB TICKET, OPERATOR/SHIPPER REPRESENTS AND WARRANTS THAT THE WASTE MATERIAL SHIPPED HEREWITH IS MATERIAL EXEMPT FROM THE RESOURCE, CONSERVATION AND RECOVERY ACT OF 1976, AS AMENDED FROM TIME TO TIME, 40 U.S.C. § 6901, et seq., THE NM HEALTH AND SAF. CODE § 361.001 et seq., AND REGULATIONS RELATED THERETO, BY VIRTUE OF THE EXEMPTION AFFORDED DRILLING FLUIDS, PRODUCED WATERS, AND OTHER WASTE ASSOCIATED WITH THE EXPLORATION, DEVELOPMENT OR PRODUCTION OF CRUDE OIL OR NATURAL GAS OR GEOTHERMAL ENERGY.

ALSO AS A CONDITION TO SUNDANCE SERVICES, INC.'S ACCEPTANCE OF THE MATERIALS SHIPPED WITH THIS JOB TICKET, TRANSPORTER REPRESENTS AND WARRANTS THAT ONLY THE MATERIAL DELIVERED BY OPERATOR/SHIPPER TO TRANSPORTER IS NOW DELIVERED BY TRANSPORTER TO SUNDANCE SERVICES, INC.'S FACILITY FOR DISPOSAL.

THIS WILL CERTIFY that the above Transporter loaded the material represented by this Transporter Statement at the above described location, and that it was tendered by the above described shipper. This will certify that no additional materials were added to this load, and that the material was delivered without incident.

DRIVER: 766FACILITY REPRESENTATIVE: A. Sta Cruz

White - Sundance

Canary - Sundance Acct #1

Pink - Transporter

No order from: TULLY SHARP ADVERTISING - 432-586-5401 - www.PromoSupermarket.com

**SUNDANCE SERVICES, Inc.**P.O. Box 1737 Eunice, New Mexico 88231
(575) 394-2511

TICKET No. 237938

LEASE OPERATOR/SHIPPER/COMPANY: SUG
 LEASE NAME: Line 100 IRP 2677
 TRANSPORTER COMPANY: Basin Service TIME 10:52 AM/PM
 DATE: 3-5-13 VEHICLE NO: 8 GENERATOR COMPANY NAME: C. Stanley
 CHARGE TO: 5114 RIG NAME AND NUMBER

TYPE OF MATERIAL

- ☐ Production Water ☐ Drilling Fluids ☐ Rinsate
☐ Tank Bottoms ☒ Contaminated Soil ☐ Jet Out
☐ Solids ☐ BS&W Content: ☐ Call Out

Description: DID

RRC or API #

C-133#

VOLUME OF MATERIAL ☐ BBLs ☒ YARD 12 ☐

AS A CONDITION TO SUNDANCE SERVICES, INC.'S ACCEPTANCE OF THE MATERIALS SHIPPED WITH THIS JOB TICKET, OPERATOR/SHIPPER REPRESENTS AND WARRANTS THAT THE WASTE MATERIAL SHIPPED HEREWITH IS MATERIAL EXEMPT FROM THE RESOURCE, CONSERVATION AND RECOVERY ACT OF 1976, AS AMENDED FROM TIME TO TIME, 40 U.S.C. § 6901, et seq., THE NM HEALTH AND SAF. CODE § 361.001 et seq., AND REGULATIONS RELATED THERETO, BY VIRTUE OF THE EXEMPTION AFFORDED DRILLING FLUIDS, PRODUCED WATERS, AND OTHER WASTE ASSOCIATED WITH THE EXPLORATION, DEVELOPMENT OR PRODUCTION OF CRUDE OIL OR NATURAL GAS OR GEOTHERMAL ENERGY.

ALSO AS A CONDITION TO SUNDANCE SERVICES, INC.'S ACCEPTANCE OF THE MATERIALS SHIPPED WITH THIS JOB TICKET, TRANSPORTER REPRESENTS AND WARRANTS THAT ONLY THE MATERIAL DELIVERED BY OPERATOR/SHIPPER TO TRANSPORTER IS NOW DELIVERED BY TRANSPORTER TO SUNDANCE SERVICES, INC.'S FACILITY FOR DISPOSAL.

THIS WILL CERTIFY that the above Transporter loaded the material represented by this Transporter Statement at the above described location, and that it was tendered by the above described shipper. This will certify that no additional materials were added to this load, and that the material was delivered without incident.

DRIVER: 766FACILITY REPRESENTATIVE: A. Sta Cruz

White - Sundance

Canary - Sundance Acct #1

Pink - Transporter

No order from: TULLY SHARP ADVERTISING - 432-586-5401 - www.PromoSupermarket.com

**SUNDANCE SERVICES, Inc.**P.O. Box 1737 Eunice, New Mexico 88231
(575) 394-2511

TICKET No.: 238029

LEASE OPERATOR/SHIPPER/COMPANY: SILGLEASE NAME: Line 101 - IRP - 2677TRANSPORTER COMPANY: Basin EnergyTIME 2:44 AM/PMDATE: 3-6-13VEHICLE NO: 118GENERATOR COMPANY
MAN'S NAME: StanleyCHARGE TO: SILGRIG NAME
AND NUMBER**TYPE OF MATERIAL**

- | | | |
|---|---|-----------------------------------|
| <input type="checkbox"/> Production Water | <input type="checkbox"/> Drilling Fluids | <input type="checkbox"/> Rinsate |
| <input type="checkbox"/> Tank Bottoms | <input checked="" type="checkbox"/> Contaminated Soil | <input type="checkbox"/> Jet Out |
| <input type="checkbox"/> Solids | <input type="checkbox"/> BS&W Content: | <input type="checkbox"/> Call Out |

Description: U/D

RRC or API #

C-133#

VOLUME OF MATERIAL

☐ BBLsYARD 12☐

AS A CONDITION TO SUNDANCE SERVICES, INC.'S ACCEPTANCE OF THE MATERIALS SHIPPED WITH THIS JOB TICKET, OPERATOR/SHIPPER REPRESENTS AND WARRANTS THAT THE WASTE MATERIAL SHIPPED HERewith IS MATERIAL EXEMPT FROM THE RESOURCE, CONSERVATION AND RECOVERY ACT OF 1976, AS AMENDED FROM TIME TO TIME, 40 U.S.C. § 6901, et seq., THE NM HEALTH AND SAF. CODE § 361.001 et seq., AND REGULATIONS RELATED THERETO, BY VIRTUE OF THE EXEMPTION AFFORDED DRILLING FLUIDS, PRODUCED WATERS, AND OTHER WASTE ASSOCIATED WITH THE EXPLORATION, DEVELOPMENT OR PRODUCTION OF CRUDE OIL OR NATURAL GAS OR GEOTHERMAL ENERGY.

ALSO AS A CONDITION TO SUNDANCE SERVICES, INC.'S ACCEPTANCE OF THE MATERIALS SHIPPED WITH THIS JOB TICKET, TRANSPORTER REPRESENTS AND WARRANTS THAT ONLY THE MATERIAL DELIVERED BY OPERATOR/SHIPPER TO TRANSPORTER IS NOW DELIVERED BY TRANSPORTER TO SUNDANCE SERVICES, INC.'S FACILITY FOR DISPOSAL.

THIS WILL CERTIFY that the above Transporter loaded the material represented by this Transporter Statement at the above described location, and that it was tendered by the above described shipper. This will certify that no additional materials were added to this load, and that the material was delivered without incident.

DRIVER: 765

(SIGNATURE)

FACILITY REPRESENTATIVE: [Signature]

(SIGNATURE)

White - Sundance

Canary - Sundance Acct #1

Pink - Transporter

Re-order from: TOTALITY SHARP ADVERTISING • 432-586-5401 • www.PromoSupermarket.com

**SUNDANCE SERVICES, Inc.**P.O. Box 1737 Eunice, New Mexico 88231
(575) 394-2511

TICKET No.: 238258

LEASE OPERATOR/SHIPPER/COMPANY: SILGLEASE NAME: Line 101 - IRP - 2677TRANSPORTER COMPANY: Basin EnergyTIME 3:06 AM/PMDATE: 3-6-13VEHICLE NO: 8GENERATOR COMPANY
MAN'S NAME: C. StanleyCHARGE TO: SILGRIG NAME
AND NUMBER**TYPE OF MATERIAL**

- | | | |
|---|---|-----------------------------------|
| <input type="checkbox"/> Production Water | <input checked="" type="checkbox"/> Drilling Fluids | <input type="checkbox"/> Rinsate |
| <input type="checkbox"/> Tank Bottoms | <input checked="" type="checkbox"/> Contaminated Soil | <input type="checkbox"/> Jet Out |
| <input type="checkbox"/> Solids | <input type="checkbox"/> BS&W Content: | <input type="checkbox"/> Call Out |

Description: U/D

RRC or API #

C-133#

VOLUME OF MATERIAL

☐ BBLsYARD 12☐

AS A CONDITION TO SUNDANCE SERVICES, INC.'S ACCEPTANCE OF THE MATERIALS SHIPPED WITH THIS JOB TICKET, OPERATOR/SHIPPER REPRESENTS AND WARRANTS THAT THE WASTE MATERIAL SHIPPED HERewith IS MATERIAL EXEMPT FROM THE RESOURCE, CONSERVATION AND RECOVERY ACT OF 1976, AS AMENDED FROM TIME TO TIME, 40 U.S.C. § 6901, et seq., THE NM HEALTH AND SAF. CODE § 361.001 et seq., AND REGULATIONS RELATED THERETO, BY VIRTUE OF THE EXEMPTION AFFORDED DRILLING FLUIDS, PRODUCED WATERS, AND OTHER WASTE ASSOCIATED WITH THE EXPLORATION, DEVELOPMENT OR PRODUCTION OF CRUDE OIL OR NATURAL GAS OR GEOTHERMAL ENERGY.

ALSO AS A CONDITION TO SUNDANCE SERVICES, INC.'S ACCEPTANCE OF THE MATERIALS SHIPPED WITH THIS JOB TICKET, TRANSPORTER REPRESENTS AND WARRANTS THAT ONLY THE MATERIAL DELIVERED BY OPERATOR/SHIPPER TO TRANSPORTER IS NOW DELIVERED BY TRANSPORTER TO SUNDANCE SERVICES, INC.'S FACILITY FOR DISPOSAL.

THIS WILL CERTIFY that the above Transporter loaded the material represented by this Transporter Statement at the above described location, and that it was tendered by the above described shipper. This will certify that no additional materials were added to this load, and that the material was delivered without incident.

DRIVER: 765

(SIGNATURE)

FACILITY REPRESENTATIVE: [Signature]

(SIGNATURE)

White - Sundance

Canary - Sundance Acct #1

Pink - Transporter

Re-order from: TOTALITY SHARP ADVERTISING • 432-586-5401 • www.PromoSupermarket.com

**SUNDANCE SERVICES, Inc.**P.O. Box 1737 Eunice, New Mexico 88231
(575) 394-2511

TICKET No. 230233

LEASE OPERATOR/SHIPPER/COMPANY: SUG
 LEASE NAME: Line 101-IRP-2677
 TRANSPORTER COMPANY: Basin Emission TIME 1:57 AM/PM
 DATE: 3-6-13 VEHICLE NO: 8 GENERATOR COMPANY NAME: A. Stanley
 CHARGE TO: SUG RIG NAME AND NUMBER:

TYPE OF MATERIAL

- | | | |
|---|---|-----------------------------------|
| <input type="checkbox"/> Production Water | <input type="checkbox"/> Drilling Fluids | <input type="checkbox"/> Rinsate |
| <input type="checkbox"/> Tank Bottoms | <input checked="" type="checkbox"/> Contaminated Soil | <input type="checkbox"/> Jet Out |
| <input type="checkbox"/> Solids | <input type="checkbox"/> BSW Content: | <input type="checkbox"/> Call Out |

Description: OLD

RRC or API #

C-133#

VOLUME OF MATERIAL ☐ BBLs☒ YARD 12

AS A CONDITION TO SUNDANCE SERVICES, INC.'S ACCEPTANCE OF THE MATERIALS SHIPPED WITH THIS JOB TICKET, OPERATOR/SHIPPER REPRESENTS AND WARRANTS THAT THE WASTE MATERIAL SHIPPED HEREWITH IS MATERIAL EXEMPT FROM THE RESOURCE, CONSERVATION AND RECOVERY ACT OF 1976, AS AMENDED FROM TIME TO TIME, 40 U.S.C. § 6901, et seq., THE NM HEALTH AND SAF. CODE § 361.001 et seq. AND REGULATIONS RELATED THERETO, BY VIRTUE OF THE EXEMPTION AFFORDED DRILLING FLUIDS, PRODUCED WATERS, AND OTHER WASTE ASSOCIATED WITH THE EXPLORATION, DEVELOPMENT OR PRODUCTION OF CRUDE OIL OR NATURAL GAS OR GEOTHERMAL ENERGY.

ALSO AS A CONDITION TO SUNDANCE SERVICES, INC.'S ACCEPTANCE OF THE MATERIALS SHIPPED WITH THIS JOB TICKET, TRANSPORTER REPRESENTS AND WARRANTS THAT ONLY THE MATERIAL DELIVERED BY OPERATOR/SHIPPER TO TRANSPORTER IS NOW DELIVERED BY TRANSPORTER TO SUNDANCE SERVICES, INC.'S FACILITY FOR DISPOSAL.

THIS WILL CERTIFY that the above Transporter loaded the material represented by this Transporter Statement at the above described location, and that it was tendered by the above described shipper. This will certify that no additional materials were added to this load, and that the material was delivered without incident.

DRIVER: TH

(SIGNATURE)

FACILITY REPRESENTATIVE: A. Stanley

(SIGNATURE)

White - Sundance

Canary - Sundance Acct #1

Pink - Transporter

Revised from: TOTALLY SHARP ADVERTISING • 432-586-5401 • www.PromoSupermarket.com

**SUNDANCE SERVICES, Inc.**P.O. Box 1737 Eunice, New Mexico 88231
(575) 394-2511

TICKET No. 230209

LEASE OPERATOR/SHIPPER/COMPANY: SUG
 LEASE NAME: Line 101-IRP-2677
 TRANSPORTER COMPANY: Basin Emission TIME 12:19 AM/PM
 DATE: 3-6-13 VEHICLE NO: 8 GENERATOR COMPANY NAME: A. Stanley
 CHARGE TO: SUG RIG NAME AND NUMBER:

TYPE OF MATERIAL

- | | | |
|---|---|-----------------------------------|
| <input type="checkbox"/> Production Water | <input type="checkbox"/> Drilling Fluids | <input type="checkbox"/> Rinsate |
| <input type="checkbox"/> Tank Bottoms | <input checked="" type="checkbox"/> Contaminated Soil | <input type="checkbox"/> Jet Out |
| <input type="checkbox"/> Solids | <input type="checkbox"/> BSW Content: | <input type="checkbox"/> Call Out |

Description: OLD

RRC or API #

C-133#

VOLUME OF MATERIAL ☐ BBLs☒ YARD 12

AS A CONDITION TO SUNDANCE SERVICES, INC.'S ACCEPTANCE OF THE MATERIALS SHIPPED WITH THIS JOB TICKET, OPERATOR/SHIPPER REPRESENTS AND WARRANTS THAT THE WASTE MATERIAL SHIPPED HEREWITH IS MATERIAL EXEMPT FROM THE RESOURCE, CONSERVATION AND RECOVERY ACT OF 1976, AS AMENDED FROM TIME TO TIME, 40 U.S.C. § 6901, et seq., THE NM HEALTH AND SAF. CODE § 361.001 et seq. AND REGULATIONS RELATED THERETO, BY VIRTUE OF THE EXEMPTION AFFORDED DRILLING FLUIDS, PRODUCED WATERS, AND OTHER WASTE ASSOCIATED WITH THE EXPLORATION, DEVELOPMENT OR PRODUCTION OF CRUDE OIL OR NATURAL GAS OR GEOTHERMAL ENERGY.

ALSO AS A CONDITION TO SUNDANCE SERVICES, INC.'S ACCEPTANCE OF THE MATERIALS SHIPPED WITH THIS JOB TICKET, TRANSPORTER REPRESENTS AND WARRANTS THAT ONLY THE MATERIAL DELIVERED BY OPERATOR/SHIPPER TO TRANSPORTER IS NOW DELIVERED BY TRANSPORTER TO SUNDANCE SERVICES, INC.'S FACILITY FOR DISPOSAL.

THIS WILL CERTIFY that the above Transporter loaded the material represented by this Transporter Statement at the above described location, and that it was tendered by the above described shipper. This will certify that no additional materials were added to this load, and that the material was delivered without incident.

DRIVER: TH

(SIGNATURE)

FACILITY REPRESENTATIVE: A. Stanley

(SIGNATURE)

White - Sundance

Canary - Sundance Acct #1

Pink - Transporter

Revised from: TOTALLY SHARP ADVERTISING • 432-586-5401 • www.PromoSupermarket.com

SUNDANCE SERVICES, Inc.
P.O. Box 1737 Eunice, New Mexico 88231
(575) 394-2511

TICKET NO: 290181

LEASE OPERATOR/SHIPPER/COMPANY: SLIG
LEASE NAME: Line 101-IRP-2677
TRANSPORTER COMPANY: Basin Service TIME: 11:13 AM/PM
DATE: 3-6-13 VEHICLE NO: 8 GENERATOR COMPANY NAME: A. Sta Cruz
CHARGE TO: SLIG RIG NAME AND NUMBER:

TYPE OF MATERIAL

<input type="checkbox"/> Production Water	<input type="checkbox"/> Drilling Fluids	<input type="checkbox"/> Rinsate
<input type="checkbox"/> Tank Bottoms	<input checked="" type="checkbox"/> Contaminated Soil	<input type="checkbox"/> Jet Out
<input type="checkbox"/> Solids	<input type="checkbox"/> BS&W Content:	<input type="checkbox"/> Call Out

Description: CID

RRC or API # _____ C-133# _____

VOLUME OF MATERIAL | BBLs. _____ : 1/2 YARD 12 : | _____

AS A CONDITION TO SUNDANCE SERVICES, INC.'S ACCEPTANCE OF THE MATERIALS SHIPPED WITH THIS JOB TICKET, OPERATOR/SHIPPER REPRESENTS AND WARRANTS THAT THE WASTE MATERIAL SHIPPED HERewith IS MATERIAL EXEMPT FROM THE RESOURCE, CONSERVATION AND RECOVERY ACT OF 1976, AS AMENDED FROM TIME TO TIME, 40 U.S.C. § 6901, et seq., THE NM HEALTH AND SAF. CODE § 361.001 et seq., AND REGULATIONS RELATED THERETO, BY VIRTUE OF THE EXEMPTION AFFORDED DRILLING FLUIDS, PRODUCED WATERS, AND OTHER WASTE ASSOCIATED WITH THE EXPLORATION, DEVELOPMENT OR PRODUCTION OF CRUDE OIL OR NATURAL GAS OR GEOTHERMAL ENERGY.

ALSO AS A CONDITION TO SUNDANCE SERVICES, INC.'S ACCEPTANCE OF THE MATERIALS SHIPPED WITH THIS JOB TICKET, TRANSPORTER REPRESENTS AND WARRANTS THAT ONLY THE MATERIAL DELIVERED BY OPERATOR/SHIPPER TO TRANSPORTER IS NOW DELIVERED BY TRANSPORTER TO SUNDANCE SERVICES, INC.'S FACILITY FOR DISPOSAL.

THIS WILL CERTIFY that the above Transporter loaded the material represented by this Transporter Statement at the above described location, and that it was tendered by the above described shipper. This will certify that no additional materials were added to this load, and that the material was delivered without incident.

DRIVER: [Signature]
FACILITY REPRESENTATIVE: A. Sta Cruz
White - Sundance Canary - Sundance Acct #1 Pink - Transporter

Re-order from: TOTALLY SHARP ALUMINUM - 412-380-5401 - www.PromoSuperMarket.com

SUNDANCE SERVICES, Inc.
P.O. Box 1737 Eunice, New Mexico 88231
(575) 394-2511

TICKET NO: 290159

LEASE OPERATOR/SHIPPER/COMPANY: SLIG
LEASE NAME: Line 101-IRP-2677
TRANSPORTER COMPANY: Basin Service TIME: 9:53 AM/PM
DATE: 3-6-13 VEHICLE NO: 8 GENERATOR COMPANY NAME: A. Sta Cruz
CHARGE TO: SLIG RIG NAME AND NUMBER:

TYPE OF MATERIAL

<input type="checkbox"/> Production Water	<input type="checkbox"/> Drilling Fluids	<input type="checkbox"/> Rinsate
<input type="checkbox"/> Tank Bottoms	<input checked="" type="checkbox"/> Contaminated Soil	<input type="checkbox"/> Jet Out
<input type="checkbox"/> Solids	<input type="checkbox"/> BS&W Content:	<input type="checkbox"/> Call Out

Description: DID

RRC or API # _____ C-133# _____

VOLUME OF MATERIAL | BBLs. _____ : 1/2 YARD 12 : | _____

AS A CONDITION TO SUNDANCE SERVICES, INC.'S ACCEPTANCE OF THE MATERIALS SHIPPED WITH THIS JOB TICKET, OPERATOR/SHIPPER REPRESENTS AND WARRANTS THAT THE WASTE MATERIAL SHIPPED HERewith IS MATERIAL EXEMPT FROM THE RESOURCE, CONSERVATION AND RECOVERY ACT OF 1976, AS AMENDED FROM TIME TO TIME, 40 U.S.C. § 6901, et seq., THE NM HEALTH AND SAF. CODE § 361.001 et seq., AND REGULATIONS RELATED THERETO, BY VIRTUE OF THE EXEMPTION AFFORDED DRILLING FLUIDS, PRODUCED WATERS, AND OTHER WASTE ASSOCIATED WITH THE EXPLORATION, DEVELOPMENT OR PRODUCTION OF CRUDE OIL OR NATURAL GAS OR GEOTHERMAL ENERGY.

ALSO AS A CONDITION TO SUNDANCE SERVICES, INC.'S ACCEPTANCE OF THE MATERIALS SHIPPED WITH THIS JOB TICKET, TRANSPORTER REPRESENTS AND WARRANTS THAT ONLY THE MATERIAL DELIVERED BY OPERATOR/SHIPPER TO TRANSPORTER IS NOW DELIVERED BY TRANSPORTER TO SUNDANCE SERVICES, INC.'S FACILITY FOR DISPOSAL.

THIS WILL CERTIFY that the above Transporter loaded the material represented by this Transporter Statement at the above described location, and that it was tendered by the above described shipper. This will certify that no additional materials were added to this load, and that the material was delivered without incident.

DRIVER: [Signature]
FACILITY REPRESENTATIVE: A. Sta Cruz
White - Sundance Canary - Sundance Acct #1 Pink - Transporter

Re-order from: TOTALLY SHARP ALUMINUM - 412-380-5401 - www.PromoSuperMarket.com

**SUNDANCE SERVICES, Inc.**P.O. Box 1737 Eunice, New Mexico 88231
(575) 394-2511

TICKET No. 250134

LEASE OPERATOR/SHIPPER/COMPANY:

SUG

LEASE NAME:

Line 101 IRP-2677

TRANSPORTER COMPANY:

Basin Service

TIME 5:43 AM/PM

DATE: 3-6-13

VEHICLE NO:

8

GENERATOR COMPANY

MAST NAME:

C. Stanley

CHARGE TO:

SUG

LOG NAME
AND NUMBER**TYPE OF MATERIAL**

- | | | |
|---|---|-----------------------------------|
| <input type="checkbox"/> Production Water | <input type="checkbox"/> Drilling Fluids | <input type="checkbox"/> Rinsate |
| <input type="checkbox"/> Tank Bottoms | <input checked="" type="checkbox"/> Contaminated Soil | <input type="checkbox"/> Jet Out |
| <input type="checkbox"/> Solids | <input type="checkbox"/> BS&W Content: | <input type="checkbox"/> Call Out |

Description:

C/D

RRC or API #

C-133#

VOLUME OF MATERIAL

1 BBLS

YARD

12

1

AS A CONDITION TO SUNDANCE SERVICES, INC.'S ACCEPTANCE OF THE MATERIALS SHIPPED WITH THIS JOB TICKET, OPERATOR/SHIPPER REPRESENTS AND WARRANTS THAT THE WASTE MATERIAL SHIPPED HEREWITH IS MATERIAL EXEMPT FROM THE RESOURCE, CONSERVATION AND RECOVERY ACT OF 1976, AS AMENDED FROM TIME TO TIME, 40 U.S.C. § 6901, et seq., THE NM HEALTH AND SAF. CODE § 361.001 et seq., AND REGULATIONS RELATED THERETO, BY VIRTUE OF THE EXEMPTION AFFORDED DRILLING FLUIDS, PRODUCED WATERS, AND OTHER WASTE ASSOCIATED WITH THE EXPLORATION, DEVELOPMENT OR PRODUCTION OF CRUDE OIL OR NATURAL GAS OR GEOTHERMAL ENERGY.

ALSO AS A CONDITION TO SUNDANCE SERVICES, INC.'S ACCEPTANCE OF THE MATERIALS SHIPPED WITH THIS JOB TICKET, TRANSPORTER REPRESENTS AND WARRANTS THAT ONLY THE MATERIAL DELIVERED BY OPERATOR/SHIPPER TO TRANSPORTER IS NOW DELIVERED BY TRANSPORTER TO SUNDANCE SERVICES, INC.'S FACILITY FOR DISPOSAL.

THIS WILL CERTIFY that the above Transporter loaded the material represented by this Transporter Statement at the above described location, and that it was tendered by the above described shipper. This will certify that no additional materials were added to this load, and that the material was delivered without incident.

DRIVER:

[Signature]

FACILITY REPRESENTATIVE:

[Signature]

White - Sundance

Canary - Sundance Acct #1

Pink - Transporter

See under Forms: TOTALLY SHARP ADVERTISING • 432-586-5403 • www.PromoSupermarket.com

**SUNDANCE SERVICES, Inc.**P.O. Box 1737 Eunice, New Mexico 88231
(575) 394-2511

TICKET No. 250409

LEASE OPERATOR/SHIPPER/COMPANY:

SUG

LEASE NAME:

Line 101 IRP-2677

TRANSPORTER COMPANY:

Basin Service

TIME 12:32 AM/PM

DATE: 3-7-13

VEHICLE NO:

7

GENERATOR COMPANY

MAST NAME:

C. Stanley

CHARGE TO:

SUG

LOG NAME
AND NUMBER**TYPE OF MATERIAL**

- | | | |
|---|---|-----------------------------------|
| <input type="checkbox"/> Production Water | <input type="checkbox"/> Drilling Fluids | <input type="checkbox"/> Rinsate |
| <input type="checkbox"/> Tank Bottoms | <input checked="" type="checkbox"/> Contaminated Soil | <input type="checkbox"/> Jet Out |
| <input type="checkbox"/> Solids | <input type="checkbox"/> BS&W Content: | <input type="checkbox"/> Call Out |

Description:

C/D

RRC or API #

C-133#

VOLUME OF MATERIAL

1 BBLS

YARD

12

1

AS A CONDITION TO SUNDANCE SERVICES, INC.'S ACCEPTANCE OF THE MATERIALS SHIPPED WITH THIS JOB TICKET, OPERATOR/SHIPPER REPRESENTS AND WARRANTS THAT THE WASTE MATERIAL SHIPPED HEREWITH IS MATERIAL EXEMPT FROM THE RESOURCE, CONSERVATION AND RECOVERY ACT OF 1976, AS AMENDED FROM TIME TO TIME, 40 U.S.C. § 6901, et seq., THE NM HEALTH AND SAF. CODE § 361.001 et seq., AND REGULATIONS RELATED THERETO, BY VIRTUE OF THE EXEMPTION AFFORDED DRILLING FLUIDS, PRODUCED WATERS, AND OTHER WASTE ASSOCIATED WITH THE EXPLORATION, DEVELOPMENT OR PRODUCTION OF CRUDE OIL OR NATURAL GAS OR GEOTHERMAL ENERGY.

ALSO AS A CONDITION TO SUNDANCE SERVICES, INC.'S ACCEPTANCE OF THE MATERIALS SHIPPED WITH THIS JOB TICKET, TRANSPORTER REPRESENTS AND WARRANTS THAT ONLY THE MATERIAL DELIVERED BY OPERATOR/SHIPPER TO TRANSPORTER IS NOW DELIVERED BY TRANSPORTER TO SUNDANCE SERVICES, INC.'S FACILITY FOR DISPOSAL.

THIS WILL CERTIFY that the above Transporter loaded the material represented by this Transporter Statement at the above described location, and that it was tendered by the above described shipper. This will certify that no additional materials were added to this load, and that the material was delivered without incident.

DRIVER:

[Signature]

FACILITY REPRESENTATIVE:

[Signature]

White - Sundance

Canary - Sundance Acct #1

Pink - Transporter

See under Forms: TOTALLY SHARP ADVERTISING • 432-586-5403 • www.PromoSupermarket.com

SUNDANCE SERVICES, Inc.
P.O. Box 1737 Eunice, New Mexico 88231
(575) 394-2511

TICKET No. 280462

LEASE OPERATOR/SHIPPER/COMPANY: SIIG

LEASE NAME: LINE 161 - IRP- 2677

TRANSPORTER COMPANY: PASIN 811111 TIME: 2:48 AM/PM

DATE: 3-7-13 VEHICLE NO: 9 GENERATOR COMPANY NAME'S NAME: C. Stanley

CHARGE TO: SIIG RIG NAME AND NUMBER

TYPE OF MATERIAL

<input type="checkbox"/> Production Water	<input checked="" type="checkbox"/> Drilling Fluids	<input type="checkbox"/> Rinsate
<input type="checkbox"/> Tank Bottoms	<input checked="" type="checkbox"/> Contaminated Soil	<input type="checkbox"/> Jet Out
<input type="checkbox"/> Solids	<input type="checkbox"/> BS&W Content:	<input type="checkbox"/> Call Out

Description: LID

RRC or API # C-133#

VOLUME OF MATERIAL ☐ BBLs. ☒ YARD 12 ☐

AS A CONDITION TO SUNDANCE SERVICES, INC.'S ACCEPTANCE OF THE MATERIALS SHIPPED WITH THIS JOB TICKET, OPERATOR/SHIPPER REPRESENTS AND WARRANTS THAT THE WASTE MATERIAL SHIPPED HERewith IS MATERIAL EXEMPT FROM THE RESOURCE, CONSERVATION AND RECOVERY ACT OF 1976, AS AMENDED FROM TIME TO TIME, 40 U.S.C. § 6901, et seq., THE NM HEALTH AND SAF. CODE § 361.001 et seq., AND REGULATIONS RELATED THERETO, BY VIRTUE OF THE EXEMPTION AFFORDED DRILLING FLUIDS, PRODUCED WATERS, AND OTHER WASTE ASSOCIATED WITH THE EXPLORATION, DEVELOPMENT OR PRODUCTION OF CRUDE OIL OR NATURAL GAS OR GEOTHERMAL ENERGY.

ALSO AS A CONDITION TO SUNDANCE SERVICES, INC.'S ACCEPTANCE OF THE MATERIALS SHIPPED WITH THIS JOB TICKET, TRANSPORTER REPRESENTS AND WARRANTS THAT ONLY THE MATERIAL DELIVERED BY OPERATOR/SHIPPER TO TRANSPORTER IS NOW DELIVERED BY TRANSPORTER TO SUNDANCE SERVICES, INC.'S FACILITY FOR DISPOSAL.

THIS WILL CERTIFY that the above Transporter loaded the material represented by this Transporter Statement at the above described location, and that it was tendered by the above described shipper. This will certify that no additional materials were added to this load, and that the material was delivered without incident.

DRIVER: [Signature]

FACILITY REPRESENTATIVE: [Signature]

White - Sundance Canary - Sundance Acct #1 Pink - Transporter

Re-order from: TALLEY SHARP ADVERTISING • 432-585-5401 • www.PromoSupermarket.com

SUNDANCE SERVICES, Inc.
P.O. Box 1737 Eunice, New Mexico 88231
(575) 394-2511

TICKET No. 280476

LEASE OPERATOR/SHIPPER/COMPANY: SIIG

LEASE NAME: LINE 161 - IRP- 2677

TRANSPORTER COMPANY: PASIN 811111 TIME: 3:36 AM/PM

DATE: 3-7-13 VEHICLE NO: 8 GENERATOR COMPANY NAME'S NAME: C. Stanley

CHARGE TO: SIIG RIG NAME AND NUMBER

TYPE OF MATERIAL

<input type="checkbox"/> Production Water	<input checked="" type="checkbox"/> Drilling Fluids	<input type="checkbox"/> Rinsate
<input type="checkbox"/> Tank Bottoms	<input checked="" type="checkbox"/> Contaminated Soil	<input type="checkbox"/> Jet Out
<input type="checkbox"/> Solids	<input type="checkbox"/> BS&W Content:	<input type="checkbox"/> Call Out

Description: LID

RRC or API # C-133#

VOLUME OF MATERIAL ☐ BBLs. ☒ YARD 12 ☐

AS A CONDITION TO SUNDANCE SERVICES, INC.'S ACCEPTANCE OF THE MATERIALS SHIPPED WITH THIS JOB TICKET, OPERATOR/SHIPPER REPRESENTS AND WARRANTS THAT THE WASTE MATERIAL SHIPPED HERewith IS MATERIAL EXEMPT FROM THE RESOURCE, CONSERVATION AND RECOVERY ACT OF 1976, AS AMENDED FROM TIME TO TIME, 40 U.S.C. § 6901, et seq., THE NM HEALTH AND SAF. CODE § 361.001 et seq., AND REGULATIONS RELATED THERETO, BY VIRTUE OF THE EXEMPTION AFFORDED DRILLING FLUIDS, PRODUCED WATERS, AND OTHER WASTE ASSOCIATED WITH THE EXPLORATION, DEVELOPMENT OR PRODUCTION OF CRUDE OIL OR NATURAL GAS OR GEOTHERMAL ENERGY.

ALSO AS A CONDITION TO SUNDANCE SERVICES, INC.'S ACCEPTANCE OF THE MATERIALS SHIPPED WITH THIS JOB TICKET, TRANSPORTER REPRESENTS AND WARRANTS THAT ONLY THE MATERIAL DELIVERED BY OPERATOR/SHIPPER TO TRANSPORTER IS NOW DELIVERED BY TRANSPORTER TO SUNDANCE SERVICES, INC.'S FACILITY FOR DISPOSAL.

THIS WILL CERTIFY that the above Transporter loaded the material represented by this Transporter Statement at the above described location, and that it was tendered by the above described shipper. This will certify that no additional materials were added to this load, and that the material was delivered without incident.

DRIVER: [Signature]

FACILITY REPRESENTATIVE: [Signature]

White - Sundance Canary - Sundance Acct #1 Pink - Transporter

Re-order from: TALLEY SHARP ADVERTISING • 432-585-5401 • www.PromoSupermarket.com

**SUNDANCE SERVICES, Inc.**P.O. Box 1737 Eunice, New Mexico 88231
(575) 394-2511TICKET No. **238449**

LEASE OPERATOR/SHIPPER/COMPANY: **SLIG**
LEASE NAME: **Line 161 - IRP - 2677**
TRANSPORTER COMPANY: **Basin Energy** TIME: **2:20 AM/PM**
DATE: **3-7-13** VEHICLE NO: **8** GENERATOR COMPANY NAME: **P. Stanley**
CHARGE TO: **SLIG** RIG NAME AND NUMBER

TYPE OF MATERIAL

- | | | |
|---|---|-----------------------------------|
| <input type="checkbox"/> Production Water | <input type="checkbox"/> Drilling Fluids | <input type="checkbox"/> Rinsate |
| <input type="checkbox"/> Tank Bottoms | <input checked="" type="checkbox"/> Contaminated Soil | <input type="checkbox"/> Jet Out |
| <input type="checkbox"/> Solids | <input type="checkbox"/> BS&W Content: | <input type="checkbox"/> Call Out |

Description: **Oil**

RRC or API #

C-133#

VOLUME OF MATERIAL ☐ BBLs. ☒ YARD **12** ☐

AS A CONDITION TO SUNDANCE SERVICES, INC.'S ACCEPTANCE OF THE MATERIALS SHIPPED WITH THIS JOB TICKET, OPERATOR/SHIPPER REPRESENTS AND WARRANTS THAT THE WASTE MATERIAL SHIPPED HERewith IS MATERIAL EXEMPT FROM THE RESOURCE, CONSERVATION AND RECOVERY ACT OF 1976, AS AMENDED FROM TIME TO TIME, 40 U.S.C. § 6901, et seq., THE NM HEALTH AND SAF. CODE § 361.001 et seq., AND REGULATIONS RELATED THERETO, BY VIRTUE OF THE EXEMPTION AFFORDED DRILLING FLUIDS, PRODUCED WATERS, AND OTHER WASTE ASSOCIATED WITH THE EXPLORATION, DEVELOPMENT OR PRODUCTION OF CRUDE OIL OR NATURAL GAS OR GEOTHERMAL ENERGY.

ALSO AS A CONDITION TO SUNDANCE SERVICES, INC.'S ACCEPTANCE OF THE MATERIALS SHIPPED WITH THIS JOB TICKET, TRANSPORTER REPRESENTS AND WARRANTS THAT ONLY THE MATERIAL DELIVERED BY OPERATOR/SHIPPER TO TRANSPORTER IS NOW DELIVERED BY TRANSPORTER TO SUNDANCE SERVICES, INC.'S FACILITY FOR DISPOSAL.

THIS WILL CERTIFY that the above Transporter loaded the material represented by this Transporter Statement at the above described location, and that it was tendered by the above described shipper. This will certify that no additional materials were added to this load, and that the material was delivered without incident.

DRIVER: **[Signature]**FACILITY REPRESENTATIVE: **[Signature]**

White - Sundance

Canary - Sundance Acct #1

Pink - Transporter

Re-order from: TOTALLY SHARP ADVERTISING • 437-586-5401 • www.PromoSupermarket.com

**SUNDANCE SERVICES, Inc.**P.O. Box 1737 Eunice, New Mexico 88231
(575) 394-2511TICKET No. **238419**

LEASE OPERATOR/SHIPPER/COMPANY: **SLIG**
LEASE NAME: **Line 161 - IRP - 2677**
TRANSPORTER COMPANY: **Basin Energy** TIME: **1:09 AM/PM**
DATE: **3-7-13** VEHICLE NO: **8** GENERATOR COMPANY NAME: **P. Stanley**
CHARGE TO: **SLIG** RIG NAME AND NUMBER

TYPE OF MATERIAL

- | | | |
|---|---|-----------------------------------|
| <input type="checkbox"/> Production Water | <input type="checkbox"/> Drilling Fluids | <input type="checkbox"/> Rinsate |
| <input type="checkbox"/> Tank Bottoms | <input checked="" type="checkbox"/> Contaminated Soil | <input type="checkbox"/> Jet Out |
| <input type="checkbox"/> Solids | <input type="checkbox"/> BS&W Content: | <input type="checkbox"/> Call Out |

Description: **Oil**

RRC or API #

C-133#

VOLUME OF MATERIAL ☐ BBLs. ☒ YARD **12** ☐

AS A CONDITION TO SUNDANCE SERVICES, INC.'S ACCEPTANCE OF THE MATERIALS SHIPPED WITH THIS JOB TICKET, OPERATOR/SHIPPER REPRESENTS AND WARRANTS THAT THE WASTE MATERIAL SHIPPED HERewith IS MATERIAL EXEMPT FROM THE RESOURCE, CONSERVATION AND RECOVERY ACT OF 1976, AS AMENDED FROM TIME TO TIME, 40 U.S.C. § 6901, et seq., THE NM HEALTH AND SAF. CODE § 361.001 et seq., AND REGULATIONS RELATED THERETO, BY VIRTUE OF THE EXEMPTION AFFORDED DRILLING FLUIDS, PRODUCED WATERS, AND OTHER WASTE ASSOCIATED WITH THE EXPLORATION, DEVELOPMENT OR PRODUCTION OF CRUDE OIL OR NATURAL GAS OR GEOTHERMAL ENERGY.

ALSO AS A CONDITION TO SUNDANCE SERVICES, INC.'S ACCEPTANCE OF THE MATERIALS SHIPPED WITH THIS JOB TICKET, TRANSPORTER REPRESENTS AND WARRANTS THAT ONLY THE MATERIAL DELIVERED BY OPERATOR/SHIPPER TO TRANSPORTER IS NOW DELIVERED BY TRANSPORTER TO SUNDANCE SERVICES, INC.'S FACILITY FOR DISPOSAL.

THIS WILL CERTIFY that the above Transporter loaded the material represented by this Transporter Statement at the above described location, and that it was tendered by the above described shipper. This will certify that no additional materials were added to this load, and that the material was delivered without incident.

DRIVER: **[Signature]**FACILITY REPRESENTATIVE: **[Signature]**

White - Sundance

Canary - Sundance Acct #1

Pink - Transporter

Re-order from: TOTALLY SHARP ADVERTISING • 437-586-5401 • www.PromoSupermarket.com

**SUNDANCE SERVICES, Inc.**P.O. Box 1737 Eunice, New Mexico 88231
(575) 394-2511

TICKET No. 230394

LEASE OPERATOR/SHIPPER/COMPANY:

SUG

LEASE NAME:

Line 101-IRP-2677

TRANSPORTER COMPANY:

Paso Fino Energy

TIME 11:28 AM/PM

DATE: 3-7-13

VEHICLE NO:

8

GENERATOR COMPANY

MAN'S NAME: C. Stanley

CHARGE TO:

SUG

RG NAME

AND NUMBER

TYPE OF MATERIAL

- | | | |
|---|---|-----------------------------------|
| <input type="checkbox"/> Production Water | <input type="checkbox"/> Drilling Fluids | <input type="checkbox"/> Rinsate |
| <input type="checkbox"/> Tank Bottoms | <input checked="" type="checkbox"/> Contaminated Soil | <input type="checkbox"/> Jet Out |
| <input type="checkbox"/> Solids | <input type="checkbox"/> BSRW Content: | <input type="checkbox"/> Call Out |

Description:

D/D

RRC or API #

C-133#

VOLUME OF MATERIAL

1 BBLs

X YARD

12

11

AS A CONDITION TO SUNDANCE SERVICES, INC.'S ACCEPTANCE OF THE MATERIALS SHIPPED WITH THIS JOB TICKET, OPERATOR/SHIPPER REPRESENTS AND WARRANTS THAT THE WASTE MATERIAL SHIPPED HEREWITH IS MATERIAL EXEMPT FROM THE RESOURCE, CONSERVATION AND RECOVERY ACT OF 1976, AS AMENDED FROM TIME TO TIME, 40 U.S.C. § 6901, et seq., THE NM HEALTH AND SAF. CODE § 361.001 et seq., AND REGULATIONS RELATED THERETO, BY VIRTUE OF THE EXEMPTION AFFORDED DRILLING FLUIDS, PRODUCED WATERS, AND OTHER WASTE ASSOCIATED WITH THE EXPLORATION, DEVELOPMENT OR PRODUCTION OF CRUDE OIL OR NATURAL GAS OR GEOTHERMAL ENERGY.

ALSO AS A CONDITION TO SUNDANCE SERVICES, INC.'S ACCEPTANCE OF THE MATERIALS SHIPPED WITH THIS JOB TICKET, TRANSPORTER REPRESENTS AND WARRANTS THAT ONLY THE MATERIAL DELIVERED BY OPERATOR/SHIPPER TO TRANSPORTER IS NOW DELIVERED BY TRANSPORTER TO SUNDANCE SERVICES, INC.'S FACILITY FOR DISPOSAL.

THIS WILL CERTIFY that the above Transporter loaded the material represented by this Transporter Statement at the above described location, and that it was tendered by the above described shipper. This will certify that no additional materials were added to this load, and that the material was delivered without incident.

DRIVER:

C. Stanley

FACILITY REPRESENTATIVE:

C. Stanley

White - Sundance

Canary - Sundance Acct #1

Pink - Transporter

Reorder from: TOTALLY SHARP ADVERTISING • 432-580-5401 • www.PromoSupermarket.com

**SUNDANCE SERVICES, Inc.**P.O. Box 1737 Eunice, New Mexico 88231
(575) 394-2511

TICKET No. 230365

LEASE OPERATOR/SHIPPER/COMPANY:

SUG

LEASE NAME:

Line 101-IRP-2677

TRANSPORTER COMPANY:

Paso Fino Energy

TIME 11:19 AM/PM

DATE: 3-7-13

VEHICLE NO:

8

GENERATOR COMPANY

MAN'S NAME: C. Stanley

CHARGE TO:

SUG

RG NAME

AND NUMBER

TYPE OF MATERIAL

- | | | |
|---|---|-----------------------------------|
| <input type="checkbox"/> Production Water | <input type="checkbox"/> Drilling Fluids | <input type="checkbox"/> Rinsate |
| <input type="checkbox"/> Tank Bottoms | <input checked="" type="checkbox"/> Contaminated Soil | <input type="checkbox"/> Jet Out |
| <input type="checkbox"/> Solids | <input type="checkbox"/> BSRW Content: | <input type="checkbox"/> Call Out |

Description:

D/D

RRC or API #

C-133#

VOLUME OF MATERIAL

1 BBLs

X YARD

12

11

AS A CONDITION TO SUNDANCE SERVICES, INC.'S ACCEPTANCE OF THE MATERIALS SHIPPED WITH THIS JOB TICKET, OPERATOR/SHIPPER REPRESENTS AND WARRANTS THAT THE WASTE MATERIAL SHIPPED HEREWITH IS MATERIAL EXEMPT FROM THE RESOURCE, CONSERVATION AND RECOVERY ACT OF 1976, AS AMENDED FROM TIME TO TIME, 40 U.S.C. § 6901, et seq., THE NM HEALTH AND SAF. CODE § 361.001 et seq., AND REGULATIONS RELATED THERETO, BY VIRTUE OF THE EXEMPTION AFFORDED DRILLING FLUIDS, PRODUCED WATERS, AND OTHER WASTE ASSOCIATED WITH THE EXPLORATION, DEVELOPMENT OR PRODUCTION OF CRUDE OIL OR NATURAL GAS OR GEOTHERMAL ENERGY.

ALSO AS A CONDITION TO SUNDANCE SERVICES, INC.'S ACCEPTANCE OF THE MATERIALS SHIPPED WITH THIS JOB TICKET, TRANSPORTER REPRESENTS AND WARRANTS THAT ONLY THE MATERIAL DELIVERED BY OPERATOR/SHIPPER TO TRANSPORTER IS NOW DELIVERED BY TRANSPORTER TO SUNDANCE SERVICES, INC.'S FACILITY FOR DISPOSAL.

THIS WILL CERTIFY that the above Transporter loaded the material represented by this Transporter Statement at the above described location, and that it was tendered by the above described shipper. This will certify that no additional materials were added to this load, and that the material was delivered without incident.

DRIVER:

C. Stanley

FACILITY REPRESENTATIVE:

C. Stanley

White - Sundance

Canary - Sundance Acct #1

Pink - Transporter

Reorder from: TOTALLY SHARP ADVERTISING • 432-580-5401 • www.PromoSupermarket.com

**SUNDANCE SERVICES, Inc.**P.O. Box 1737 Eunice, New Mexico 88231
(575) 394-2511

TICKET NO. 230345

LEASE OPERATOR/SHIPPER/COMPANY: SUG
LEASE NAME: Line 161 - IRP - 2677
TRANSPORTER COMPANY: Basin Eunice TIME 9:19 AM/PM
DATE: 3-7-13 VEHICLE NO: 8 GENERATOR COMPANY NAME: C. Stanley
CHARGE TO: SUG REG NAME AND NUMBER

TYPE OF MATERIAL

☐ Production Water ☐ Drilling Fluids ☐ Rinsate
☐ Tank Bottoms ☒ Contaminated Soil ☐ Jet Out
☐ Solids ☐ BS&W Content: ☐ Call Out

Description: C/D

RRC or API # C-133#

VOLUME OF MATERIAL ☐ BBLS. ✓ YARD 12 ☐

AS A CONDITION TO SUNDANCE SERVICES, INC.'S ACCEPTANCE OF THE MATERIALS SHIPPED WITH THIS JOB TICKET, OPERATOR/SHIPPER REPRESENTS AND WARRANTS THAT THE WASTE MATERIAL SHIPPED HEREWITH IS MATERIAL EXEMPT FROM THE RESOURCE CONSERVATION AND RECOVERY ACT OF 1976, AS AMENDED FROM TIME TO TIME, 40 U.S.C. § 6901, et seq., THE NM HEALTH AND SAF. CODE § 361.001 et seq., AND REGULATIONS RELATED THERETO, BY VIRTUE OF THE EXEMPTION AFFORDED DRILLING FLUIDS, PRODUCED WATERS, AND OTHER WASTE ASSOCIATED WITH THE EXPLORATION, DEVELOPMENT OR PRODUCTION OF CRUDE OIL OR NATURAL GAS OR GEOTHERMAL ENERGY.

ALSO AS A CONDITION TO SUNDANCE SERVICES, INC.'S ACCEPTANCE OF THE MATERIALS SHIPPED WITH THIS JOB TICKET, TRANSPORTER REPRESENTS AND WARRANTS THAT ONLY THE MATERIAL DELIVERED BY OPERATOR/SHIPPER TO TRANSPORTER IS NOW DELIVERED BY TRANSPORTER TO SUNDANCE SERVICES, INC.'S FACILITY FOR DISPOSAL.

THIS WILL CERTIFY that the above Transporter loaded the material represented by this Transporter Statement at the above described location, and that it was tendered by the above described shipper. This will certify that no additional materials were added to this load, and that the material was delivered without incident.

DRIVER: [Signature]FACILITY REPRESENTATIVE: [Signature]

White - Sundance Canary - Sundance Acct #1 Pink - Transporter

Re-order from: TOTALLY SHARP ADVERTISING • 432-580-5401 • www.PROMOSupermarket.com

**SUNDANCE SERVICES, Inc.**P.O. Box 1737 Eunice, New Mexico 88231
(575) 394-2511

TICKET NO. 230432

LEASE OPERATOR/SHIPPER/COMPANY: SUG
LEASE NAME: Line 161 - IRP - 2677
TRANSPORTER COMPANY: Basin Eunice TIME 1:01 AM/PM
DATE: 3-7-13 VEHICLE NO: 9 GENERATOR COMPANY NAME: C. Stanley
CHARGE TO: SUG REG NAME AND NUMBER

TYPE OF MATERIAL

☐ Production Water ☐ Drilling Fluids ☐ Rinsate
☐ Tank Bottoms ☒ Contaminated Soil ☐ Jet Out
☐ Solids ☐ BS&W Content: ☐ Call Out

Description: C/D

RRC or API # C-133#

VOLUME OF MATERIAL ☐ BBLS. ✓ YARD 12 ☐

AS A CONDITION TO SUNDANCE SERVICES, INC.'S ACCEPTANCE OF THE MATERIALS SHIPPED WITH THIS JOB TICKET, OPERATOR/SHIPPER REPRESENTS AND WARRANTS THAT THE WASTE MATERIAL SHIPPED HEREWITH IS MATERIAL EXEMPT FROM THE RESOURCE CONSERVATION AND RECOVERY ACT OF 1976, AS AMENDED FROM TIME TO TIME, 40 U.S.C. § 6901, et seq., THE NM HEALTH AND SAF. CODE § 361.001 et seq., AND REGULATIONS RELATED THERETO, BY VIRTUE OF THE EXEMPTION AFFORDED DRILLING FLUIDS, PRODUCED WATERS, AND OTHER WASTE ASSOCIATED WITH THE EXPLORATION, DEVELOPMENT OR PRODUCTION OF CRUDE OIL OR NATURAL GAS OR GEOTHERMAL ENERGY.

ALSO AS A CONDITION TO SUNDANCE SERVICES, INC.'S ACCEPTANCE OF THE MATERIALS SHIPPED WITH THIS JOB TICKET, TRANSPORTER REPRESENTS AND WARRANTS THAT ONLY THE MATERIAL DELIVERED BY OPERATOR/SHIPPER TO TRANSPORTER IS NOW DELIVERED BY TRANSPORTER TO SUNDANCE SERVICES, INC.'S FACILITY FOR DISPOSAL.

THIS WILL CERTIFY that the above Transporter loaded the material represented by this Transporter Statement at the above described location, and that it was tendered by the above described shipper. This will certify that no additional materials were added to this load, and that the material was delivered without incident.

DRIVER: [Signature]FACILITY REPRESENTATIVE: [Signature]

White - Sundance Canary - Sundance Acct #1 Pink - Transporter

Re-order from: TOTALLY SHARP ADVERTISING • 432-580-5401 • www.PROMOSupermarket.com

**SUNDANCE SERVICES, Inc.**P.O. Box 1737 Eunice, New Mexico 88231
(575) 394-2511

TICKET No. 230630

LEASE OPERATOR/SHIPPER/COMPANY: SLIG
LEASE NAME: Line 101-IRP-2677
TRANSPORTER COMPANY: Basin Eunice TIME 7:39 AM/PM
DATE: 7-8-13 VEHICLE NO: 8 GENERATOR COMPANY NAME: C. Stanley
CHARGE TO: SLIG RIG NAME AND NUMBER

TYPE OF MATERIAL

<input type="checkbox"/> Production Water	<input checked="" type="checkbox"/> Drilling Fluids	<input type="checkbox"/> Rinsate
<input type="checkbox"/> Tank Bottoms	<input checked="" type="checkbox"/> Contaminated Soil	<input type="checkbox"/> Jet Out
<input type="checkbox"/> Solids	<input type="checkbox"/> BS&W Content:	<input type="checkbox"/> Call Out

Description: CID

RRC or API # C-133#

VOLUME OF MATERIAL ☐ BBLS. ☒ YARD 12 ☐

AS A CONDITION TO SUNDANCE SERVICES, INC.'S ACCEPTANCE OF THE MATERIALS SHIPPED WITH THIS JOB TICKET, OPERATOR/SHIPPER REPRESENTS AND WARRANTS THAT THE WASTE MATERIAL SHIPPED HERewith IS MATERIAL EXEMPT FROM THE RESOURCE, CONSERVATION AND RECOVERY ACT OF 1976, AS AMENDED FROM TIME TO TIME, 40 U.S.C. § 6901, et seq., THE NM HEALTH AND SAF. CODE § 361.001 et seq., AND REGULATIONS RELATED THERETO, BY VIRTUE OF THE EXEMPTION AFFORDED DRILLING FLUIDS, PRODUCED WATERS, AND OTHER WASTE ASSOCIATED WITH THE EXPLORATION, DEVELOPMENT OR PRODUCTION OF CRUDE OIL OR NATURAL GAS OR GEOTHERMAL ENERGY.

ALSO AS A CONDITION TO SUNDANCE SERVICES, INC.'S ACCEPTANCE OF THE MATERIALS SHIPPED WITH THIS JOB TICKET, TRANSPORTER REPRESENTS AND WARRANTS THAT ONLY THE MATERIAL DELIVERED BY OPERATOR/SHIPPER TO TRANSPORTER IS NOW DELIVERED BY TRANSPORTER TO SUNDANCE SERVICES, INC.'S FACILITY FOR DISPOSAL.

THIS WILL CERTIFY that the above Transporter loaded the material represented by this Transporter Statement at the above described location, and that it was tendered by the above described shipper. This will certify that no additional materials were added to this load, and that the material was delivered without incident.

DRIVER: [Signature]FACILITY REPRESENTATIVE: [Signature]

White - Sundance Canary - Sundance Acct. #1 Pink - Transporter

Re-order from: TOTALLY SHARP ADVERTISING • 432-580-5401 • www.PromoSupermarket.com

**SUNDANCE SERVICES, Inc.**P.O. Box 1737 Eunice, New Mexico 88231
(575) 394-2511

TICKET No. 230610

LEASE OPERATOR/SHIPPER/COMPANY: SLIG
LEASE NAME: Line 101-IRP-2677
TRANSPORTER COMPANY: Basin Eunice TIME 7:16 AM/PM
DATE: 7-8-13 VEHICLE NO: 8 GENERATOR COMPANY NAME: C. Stanley
CHARGE TO: SLIG RIG NAME AND NUMBER

TYPE OF MATERIAL

<input type="checkbox"/> Production Water	<input checked="" type="checkbox"/> Drilling Fluids	<input type="checkbox"/> Rinsate
<input type="checkbox"/> Tank Bottoms	<input checked="" type="checkbox"/> Contaminated Soil	<input type="checkbox"/> Jet Out
<input type="checkbox"/> Solids	<input type="checkbox"/> BS&W Content:	<input type="checkbox"/> Call Out

Description: CID

RRC or API # C-133#

VOLUME OF MATERIAL ☐ BBLS. ☒ YARD 12 ☐

AS A CONDITION TO SUNDANCE SERVICES, INC.'S ACCEPTANCE OF THE MATERIALS SHIPPED WITH THIS JOB TICKET, OPERATOR/SHIPPER REPRESENTS AND WARRANTS THAT THE WASTE MATERIAL SHIPPED HERewith IS MATERIAL EXEMPT FROM THE RESOURCE, CONSERVATION AND RECOVERY ACT OF 1976, AS AMENDED FROM TIME TO TIME, 40 U.S.C. § 6901, et seq., THE NM HEALTH AND SAF. CODE § 361.001 et seq., AND REGULATIONS RELATED THERETO, BY VIRTUE OF THE EXEMPTION AFFORDED DRILLING FLUIDS, PRODUCED WATERS, AND OTHER WASTE ASSOCIATED WITH THE EXPLORATION, DEVELOPMENT OR PRODUCTION OF CRUDE OIL OR NATURAL GAS OR GEOTHERMAL ENERGY.

ALSO AS A CONDITION TO SUNDANCE SERVICES, INC.'S ACCEPTANCE OF THE MATERIALS SHIPPED WITH THIS JOB TICKET, TRANSPORTER REPRESENTS AND WARRANTS THAT ONLY THE MATERIAL DELIVERED BY OPERATOR/SHIPPER TO TRANSPORTER IS NOW DELIVERED BY TRANSPORTER TO SUNDANCE SERVICES, INC.'S FACILITY FOR DISPOSAL.

THIS WILL CERTIFY that the above Transporter loaded the material represented by this Transporter Statement at the above described location, and that it was tendered by the above described shipper. This will certify that no additional materials were added to this load, and that the material was delivered without incident.

DRIVER: [Signature]FACILITY REPRESENTATIVE: [Signature]

White - Sundance Canary - Sundance Acct. #1 Pink - Transporter

Re-order from: TOTALLY SHARP ADVERTISING • 432-580-5401 • www.PromoSupermarket.com

SUNDANCE SERVICES, Inc.
P.O. Box 1737 Eunice, New Mexico 88231
(575) 394-2511

TICKET No. 238595

LEASE OPERATOR/SHIPPER/COMPANY: SUG
LEASE NAME: Line 101 - IRP - 2677
TRANSPORTER COMPANY: Posim Shilline TIME 11:19 AM/PM
DATE: 3-5-13 VEHICLE NO: 05 GENERATOR COMPANY NAME'S NAME: A. Sta Cruz
CHARGE TO: SUG RG NAME AND NUMBER

TYPE OF MATERIAL

<input type="checkbox"/> Production Water	<input type="checkbox"/> Drilling Fluids	<input type="checkbox"/> Rinsate
<input type="checkbox"/> Tank Bottoms	<input checked="" type="checkbox"/> Contaminated Soil	<input type="checkbox"/> Jet Out
<input type="checkbox"/> Solids	<input type="checkbox"/> BS&W Content:	<input type="checkbox"/> Call Out

Description: U/D

RRC or API # C-133#

VOLUME OF MATERIAL | BBLs. _____ YARD 12 | _____

AS A CONDITION TO SUNDANCE SERVICES, INC.'S ACCEPTANCE OF THE MATERIALS SHIPPED WITH THIS JOB TICKET, OPERATOR/SHIPPER REPRESENTS AND WARRANTS THAT THE WASTE MATERIAL SHIPPED HEREWITH IS MATERIAL EXEMPT FROM THE RESOURCE, CONSERVATION AND RECOVERY ACT OF 1976, AS AMENDED FROM TIME TO TIME, 40 U.S.C. § 6901, et seq., THE NM HEALTH AND SAF. CODE § 361.001 et seq., AND REGULATIONS RELATED THERETO, BY VIRTUE OF THE EXEMPTION AFFORDED DRILLING FLUIDS, PRODUCED WATERS, AND OTHER WASTE ASSOCIATED WITH THE EXPLORATION, DEVELOPMENT OR PRODUCTION OF CRUDE OIL OR NATURAL GAS OR GEOTHERMAL ENERGY.

ALSO AS A CONDITION TO SUNDANCE SERVICES, INC.'S ACCEPTANCE OF THE MATERIALS SHIPPED WITH THIS JOB TICKET, TRANSPORTER REPRESENTS AND WARRANTS THAT ONLY THE MATERIAL DELIVERED BY OPERATOR/SHIPPER TO TRANSPORTER IS NOW DELIVERED BY TRANSPORTER TO SUNDANCE SERVICES, INC.'S FACILITY FOR DISPOSAL.

THIS WILL CERTIFY that the above Transporter loaded the material represented by this Transporter Statement at the above described location, and that it was tendered by the above described shipper. This will certify that no additional materials were added to this load, and that the material was delivered without incident.

DRIVER: [Signature]
FACILITY REPRESENTATIVE: A. Sta Cruz
White - Sundance Canary - Sundance Acct #1 Pink - Transporter

Re-order from: TOTALLY SHARP ADVERTISING • 832-580-5403 • www.PromoSupermarket.com

SUNDANCE SERVICES, Inc.
P.O. Box 1737 Eunice, New Mexico 88231
(575) 394-2511

TICKET No. 238579

LEASE OPERATOR/SHIPPER/COMPANY: SUG
LEASE NAME: Line 101 - IRP - 2677
TRANSPORTER COMPANY: Posim Shilline TIME 9:58 AM/PM
DATE: 3-5-13 VEHICLE NO: 8 GENERATOR COMPANY NAME'S NAME: A. Sta Cruz
CHARGE TO: SUG RG NAME AND NUMBER

TYPE OF MATERIAL

<input type="checkbox"/> Production Water	<input type="checkbox"/> Drilling Fluids	<input type="checkbox"/> Rinsate
<input type="checkbox"/> Tank Bottoms	<input checked="" type="checkbox"/> Contaminated Soil	<input type="checkbox"/> Jet Out
<input type="checkbox"/> Solids	<input type="checkbox"/> BS&W Content:	<input type="checkbox"/> Call Out

Description: U/D

RRC or API # C-133#

VOLUME OF MATERIAL | BBLs. _____ YARD 12 | _____

AS A CONDITION TO SUNDANCE SERVICES, INC.'S ACCEPTANCE OF THE MATERIALS SHIPPED WITH THIS JOB TICKET, OPERATOR/SHIPPER REPRESENTS AND WARRANTS THAT THE WASTE MATERIAL SHIPPED HEREWITH IS MATERIAL EXEMPT FROM THE RESOURCE, CONSERVATION AND RECOVERY ACT OF 1976, AS AMENDED FROM TIME TO TIME, 40 U.S.C. § 6901, et seq., THE NM HEALTH AND SAF. CODE § 361.001 et seq., AND REGULATIONS RELATED THERETO, BY VIRTUE OF THE EXEMPTION AFFORDED DRILLING FLUIDS, PRODUCED WATERS, AND OTHER WASTE ASSOCIATED WITH THE EXPLORATION, DEVELOPMENT OR PRODUCTION OF CRUDE OIL OR NATURAL GAS OR GEOTHERMAL ENERGY.

ALSO AS A CONDITION TO SUNDANCE SERVICES, INC.'S ACCEPTANCE OF THE MATERIALS SHIPPED WITH THIS JOB TICKET, TRANSPORTER REPRESENTS AND WARRANTS THAT ONLY THE MATERIAL DELIVERED BY OPERATOR/SHIPPER TO TRANSPORTER IS NOW DELIVERED BY TRANSPORTER TO SUNDANCE SERVICES, INC.'S FACILITY FOR DISPOSAL.

THIS WILL CERTIFY that the above Transporter loaded the material represented by this Transporter Statement at the above described location, and that it was tendered by the above described shipper. This will certify that no additional materials were added to this load, and that the material was delivered without incident.

DRIVER: [Signature]
FACILITY REPRESENTATIVE: A. Sta Cruz
White - Sundance Canary - Sundance Acct #1 Pink - Transporter

Re-order from: TOTALLY SHARP ADVERTISING • 832-580-5403 • www.PromoSupermarket.com

APPENDIX D

Release Notification and Corrective Action
(Form C-144)

District I
1625 N. French Dr., Hobbs, NM 88240
District II
1301 W. Grand Avenue, Artesia, NM 88210
District III
1000 Rio Brazos Road, Aztec, NM 87410
District IV
1220 S. St. Francis Dr., Santa Fe, NM 87505

State of New Mexico
Energy Minerals and Natural Resources
Oil Conservation Division
1220 South St. Francis Dr.
Santa Fe, NM 87505

RECEIVED

JAN 28 2011

HOBBSOC

Form C-14
Revised October 10, 20

Submit 2 Copies to appropriate District Office in accordance with Rule 116 on back side of form

Release Notification and Corrective Action

OPERATOR

☒ Initial Report ☐ Final Report

Name of Company	Southern Union Gas Services	Contact	Curt Stanley
Address	1507 W. 15 th Street, Monahans, TX 79756	Telephone No.	575-390-7595
Facility Name	Pipeline #101	Facility Type	Natural Gas Pipeline
Surface Owner	Crawford	Mineral Owner	
		Lease No.	30-025-38822

LOCATION OF RELEASE

Unit Letter "P"	Section 20	Township 24S	Range 37E	Feet from the	North/South Line	Feet from the	East/West Line	County Lea
--------------------	---------------	-----------------	--------------	---------------	------------------	---------------	----------------	---------------

Latitude N 32 degrees 11.749 Longitude W 103 degrees 10.788

NATURE OF RELEASE

Type of Release	Crude Oil, Produced Water and Natural Gas	Volume of Release	7 BBLS	Volume Recovered	4 BBLS
Source of Release	16-Inch Steel Pipeline	Date and Hour of Occurrence	January 25, 2011 - Time Unknown	Date and Hour of Discovery	January 25, 2011 - approximately 1200 hrs
Was Immediate Notice Given?	<input type="checkbox"/> Yes <input type="checkbox"/> No <input checked="" type="checkbox"/> Not Required	If YES, To Whom?			
By Whom?	Curt Stanley	Date and Hour			
Was a Watercourse Reached?	<input type="checkbox"/> Yes <input checked="" type="checkbox"/> No	If YES, Volume Impacting the Watercourse			

If a Watercourse was Impacted, Describe Fully:

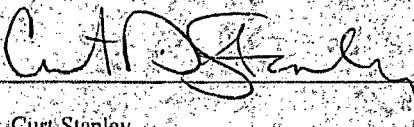
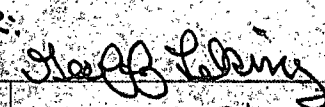
Describe Cause of Problem and Remedial Action Taken:

A sixteen (16) inch diameter low pressure steel pipeline developed a leak, most likely due to internal corrosion. A vacuum truck was called to recover free standing fluids from the ground surface. Following the excavation of the pipeline, a temporary pipeline clamp was utilized to mitigate the release. Following the initial response activities, the excavation was backfilled due the proximity of the release to a county road. Permanent pipeline repairs will be made.

Describe Area Affected and Cleanup Action Taken:

The release affected an area measuring approximately 1,700 square feet. The release will be remediated per NMOC regulatory guidelines following the completion of permanent pipeline repair activities.

I hereby certify that the information given above is true and complete to the best of my knowledge and understand that pursuant to NMOC rules and regulations, all operators are required to report and/or file certain release notifications and perform corrective actions for releases which may endanger public health or the environment. The acceptance of a C-141 report by the NMOC marked as "Final Report" does not relieve the operator of liability should their operations have failed to adequately investigate and remediate contamination that pose a threat to ground water, surface water, human health or the environment. In addition, NMOC acceptance of a C-141 report does not relieve the operator of responsibility for compliance with any other federal, state, or local laws and/or regulations.

Signature: 	OIL CONSERVATION DIVISION	
Printed Name: Curt Stanley	Approved by: District Supervisor: 	
Title: EHS Compliance Specialist	Approval Date: 01/28/11	Expiration Date: 03/28/11
E-mail Address: curt.stanley@sug.com	Conditions of Approval: SUBMIT	Attached <input type="checkbox"/>
Date: 1/27/2011	Phone: 575-390-7595	100-01-11-2677

* Attach Additional Sheets If Necessary