

# **BURLINGTON RESOURCES**

February 4, 2000

New Mexico Oil Conservation Division  
1000 Rio Brazos Road  
Aztec, New Mexico 87410

Re: San Juan #10  
M Section 10, T-30-N, R-10-W  
30-045-09612

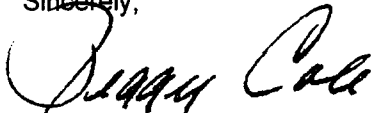
Gentlemen:

Attached is a copy of the allocation for the commingling of the subject well. DHC-1244 was issued for this well.

Gas:	Pictured Cliffs	18.62%	
	Mesa Verde		81.38%
Oil:	Pictured Cliffs	0%	
	Mesa Verde		100%

These allocations are based on historic production from the Pictured Cliffs and Mesa Verde. Please let me know if you have any questions.

Sincerely,



Peggy Bradfield Cole  
Regulatory/Compliance Administrator

Xc: NMOCD – Santa Fe  
Bureau of Land Management – Farmington

**San Juan #10**  
760' FNL 1050' FWL  
M - Sec 10, 30N, 10 W

**Production Allocation**

*Mesaverde Cumulative Production (6/96-12/98):	7795 MMcf	84.5%
*Pictured Cliffs Cumulative Production (6/96-12/98):	1434 MMcf	15.5%
Total:	9,229	100.0%

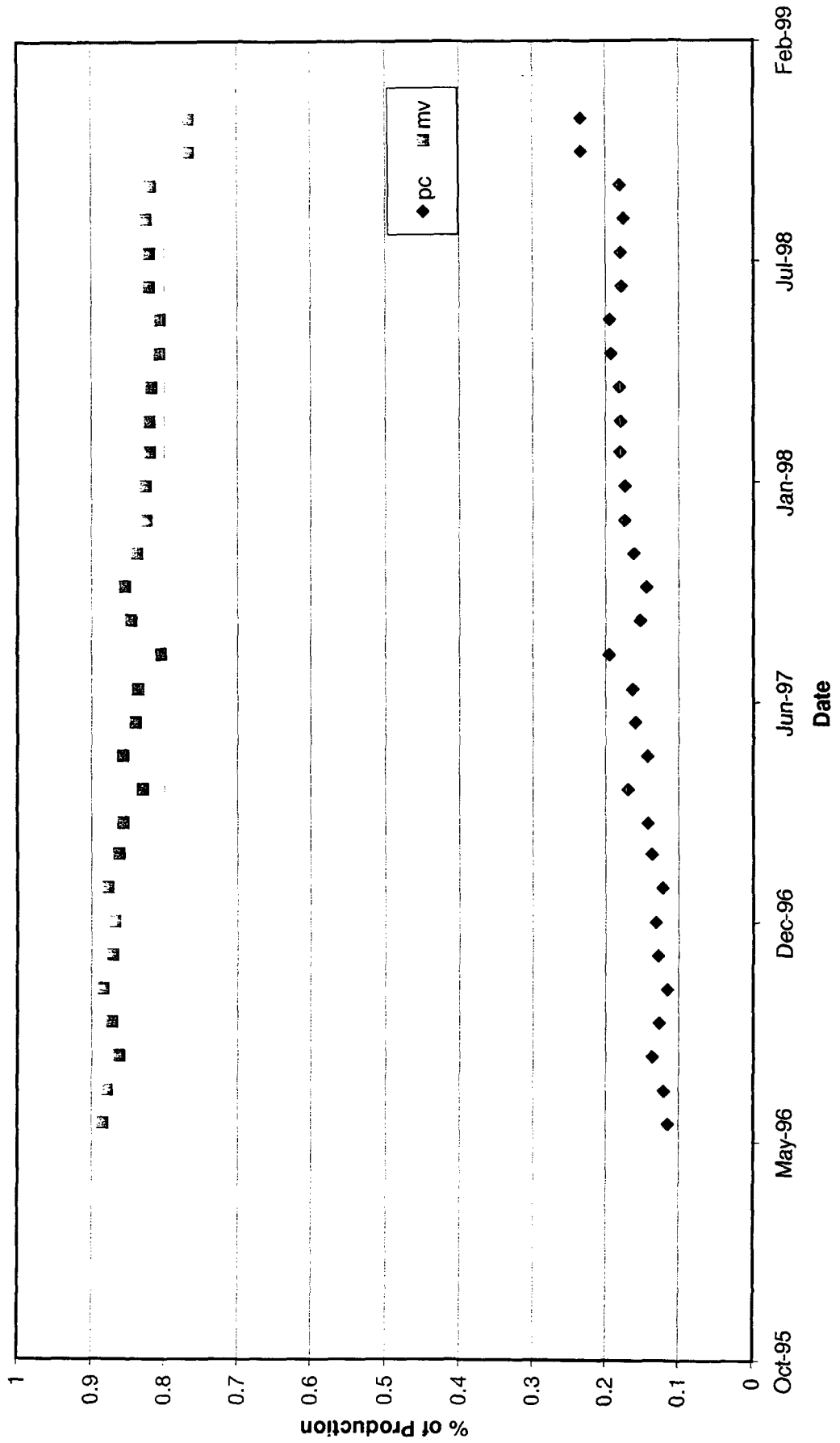
*Mesaverde Cumulative Production:	27,281 BBls	100.0%
*Pictured Cliffs Cumulative Production	0 BBls	0.0%
Total:	27,281	

\*Allocation Formula Basis: The fixed percentages are based on cumulative production from 6/96-12/98. The Pictured Cliffs production during this time frame was extrapolated from the decline curved that was established prior to the well being commingled. The Mesaverde production was then calculate by subtracting the extrapolated Pictured Cliffs production from the total production. These numbers were then used to calculate the allocation percentages.

msq

07/01/99

# MV & PC & Production



## Allocation

<u>Date</u>	<u>PC Qday</u>	<u>MV Qday</u>	<u>Total Qday</u>	<u>PC %</u>	<u>MV %</u>
Jun-96	50	382	431	11.5%	88.5%
Jul-96	49	360	409	12.0%	88.0%
Aug-96	49	309	358	13.7%	86.3%
Sep-96	49	336	385	12.7%	87.3%
Oct-96	49	371	419	11.6%	88.4%
Nov-96	48	329	377	12.8%	87.2%
Dec-96	48	318	366	13.2%	86.8%
Jan-97	48	345	393	12.2%	87.8%
Feb-97	48	300	348	13.7%	86.3%
Mar-97	48	286	333	14.3%	85.7%
Apr-97	47	232	279	16.9%	83.1%
May-97	47	282	330	14.3%	85.7%
Jun-97	47	247	294	15.9%	84.1%
Jul-97	47	240	286	16.3%	83.7%
Aug-97	46	192	239	19.5%	80.5%
Sep-97	46	255	301	15.4%	84.6%
Oct-97	46	271	317	14.5%	85.5%
Nov-97	46	237	283	16.2%	83.8%
Dec-97	46	215	261	17.5%	82.5%
Jan-98	45	216	261	17.4%	82.6%
Feb-98	45	205	250	18.0%	82.0%
Mar-98	45	206	251	17.9%	82.1%
Apr-98	45	202	247	18.1%	81.9%
May-98	45	186	231	19.3%	80.7%
Jun-98	44	184	228	19.4%	80.6%
Jul-98	44	202	247	17.9%	82.1%
Aug-98	44	201	245	18.0%	82.0%
Sep-98	44	206	249	17.5%	82.5%
Oct-98	43	197	241	18.1%	81.9%
Nov-98	43	142	185	23.4%	76.6%
Dec-98	43	141	184	23.4%	76.6%
<b>Total</b>	<b>1434</b>	<b>7795</b>	<b>9228</b>	<b>15.5%</b>	<b>84.5%</b>