

Bratcher, Mike, EMNRD

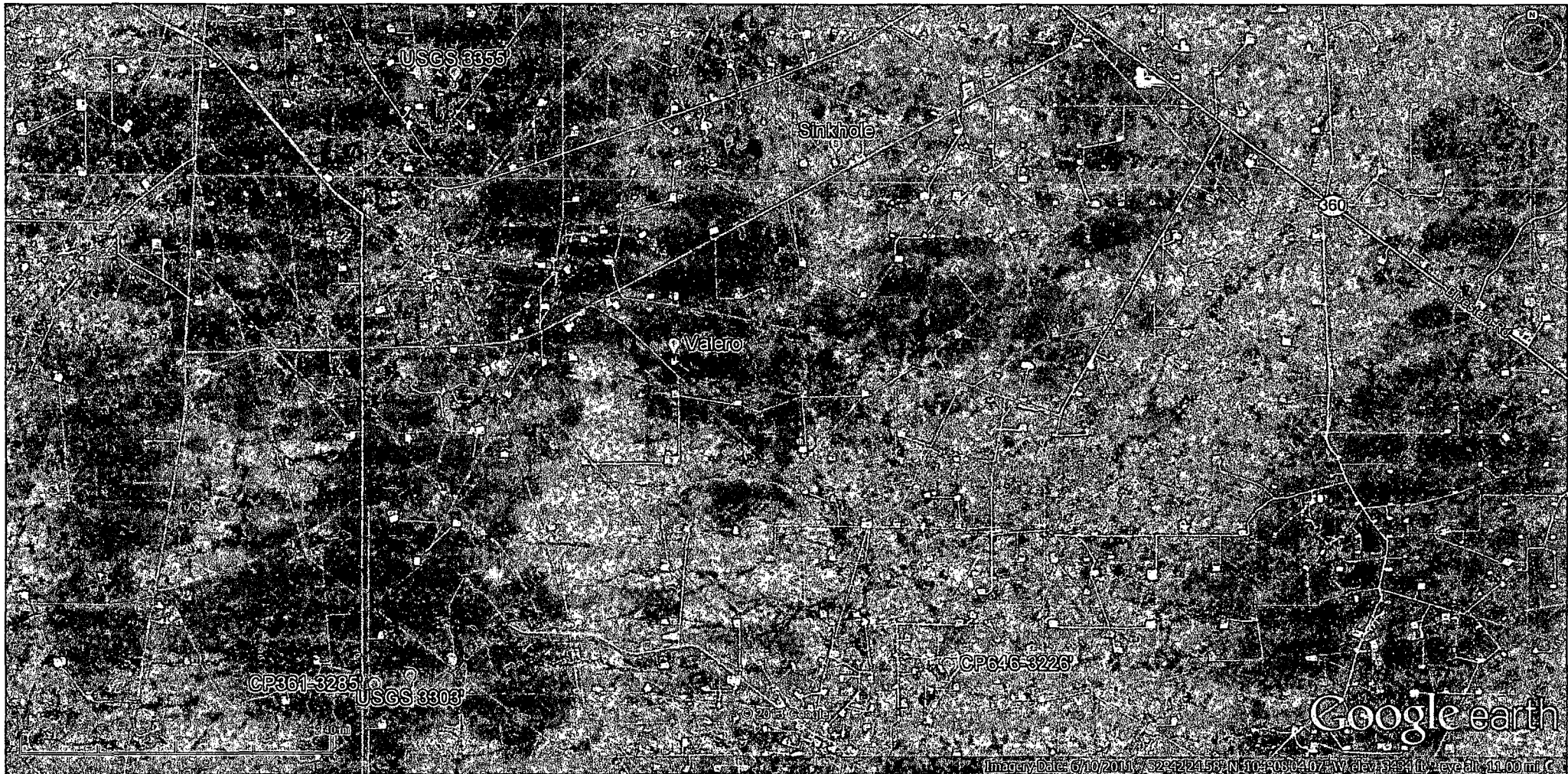
From: Cheryl Winkler <cmwink@mac.com>
Sent: Tuesday, May 28, 2013 3:46 PM
To: Bratcher, Mike, EMNRD
Subject: Additional Well Information on Valero State No. 1
Attachments: Valero State No. 1 Well Map and Files.pdf

Mike,

Attached is the information on the depth to groundwater in the area of the Valero State No. 1 well. Depth to groundwater at the Valero is 190' based on this information. I will include this information in the final report.

Please call me if you have questions.

Thank you very much.
Cheryl





[USGS Home](#)
[Contact USGS](#)
[Search USGS](#)

National Water Information System: Web Interface

[USGS Water Resources](#)

Data Category: Geographic Area:

[News](#) - updated April 17,2013

Groundwater levels for New Mexico

NM

Search Results -- 1 sites found

Search Criteria

Agency code = usgs

site_no list =

• 324424104103901

Minimum number of levels = 1

[Save file of selected sites](#) to local disk for future upload

USGS 324424104103901 18S.28E.21.21212

Available data for this site

Groundwater: Field measurements

Eddy County, New Mexico

Hydrologic Unit Code 13060011

Latitude 32°44'24", Longitude 104°10'39" NAD27

Land-surface elevation 3,580 feet above NGVD29

The depth of the well is 250.00 feet below land surface.

This well is completed in the Artesia Group (313ARTS) local aquifer.

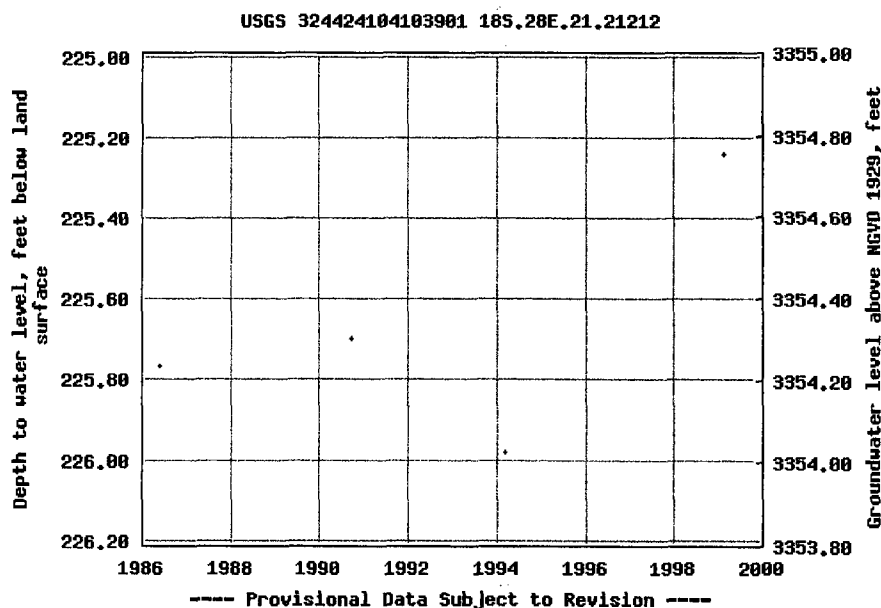
Output formats

[Table of data](#)

[Tab-separated data](#)

[Graph of data](#)

[Reselect period](#)



Breaks in the plot represent a gap of at least one year between field measurements.

[Download a presentation-quality graph](#)

[Questions about sites/data?](#)

[Feedback on this web site](#)

[Automated retrievals](#)

[Data Tips](#)

[Explanation of terms](#)

[Subscribe for system changes](#)



[USGS Home](#)
[Contact USGS](#)
[Search USGS](#)

National Water Information System: Web Interface

[USGS Water Resources](#)

Data Category: Geographic Area:

[News](#) - updated April 17,2013

Groundwater levels for New Mexico

NM

Search Results -- 1 sites found

Search Criteria

Agency code = usgs
site_no list =
• 324022104105701

Minimum number of levels = 1

[Save file of selected sites](#) to local disk for future upload

USGS 324022104105701 19S.28E.09.32322

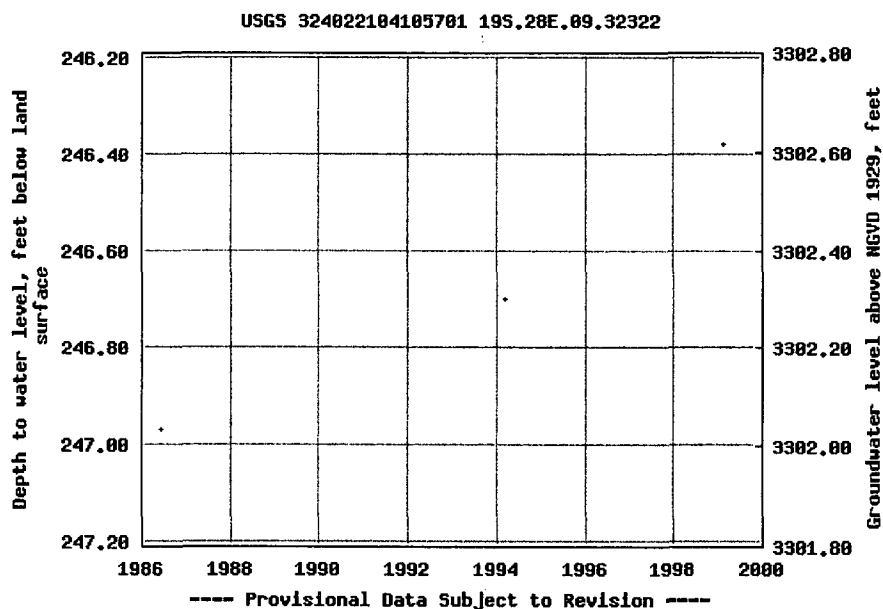
Available data for this site

Groundwater: ☒ Field measurements

Eddy County, New Mexico
Hydrologic Unit Code 13060011
Latitude 32°40'22", Longitude 104°10'57" NAD27
Land-surface elevation 3,549 feet above NGVD29
The depth of the well is 365.00 feet below land surface.
This well is completed in the Rustler Formation (312RSLR) local aquifer.

Output formats

[Table of data](#)
[Tab-separated data](#)
[Graph of data](#)
[Reselect period](#)



Breaks in the plot represent a gap of at least one year between field measurements.
[Download a presentation-quality graph](#)

[Questions about sites/data?](#)
[Feedback on this web site](#)
[Automated retrievals](#)

[Data Tips](#)
[Explanation of terms](#)
[Subscribe for system changes](#)





New Mexico Office of the State Engineer

Point of Diversion Summary

(quarters are 1=NW 2=NE 3=SW 4=SE)

(quarters are smallest to largest)

(NAD83 UTM in meters)

POD Number

Q64 Q16 Q4 Sec Tws Rng

X

Y

CP 00361 EXPL

3 1 3 09 19S 28E

576094 3615246*

Driller License:

Driller Name: D.M. BASSETT

Drill Start Date: 04/19/1977

Drill Finish Date: 04/23/1971

Plug Date:

Log File Date: 05/25/1971

PCW Rcv Date:

Source: Shallow

Pump Type:

Pipe Discharge Size:

Estimated Yield:

Casing Size:

Depth Well: 365 feet

Depth Water: 265 feet

*UTM location was derived from PLSS - see Help

The data is furnished by the NMOSE/ISC and is accepted by the recipient with the expressed understanding that the OSE/ISC make no warranties, expressed or implied, concerning the accuracy, completeness, reliability, usability, or suitability for any particular purpose of the data.



New Mexico Office of the State Engineer

Point of Diversion Summary

(quarters are 1=NW 2=NE 3=SW 4=SE)

(quarters are smallest to largest)

(NAD83 UTM in meters)

POD Number

Q64 Q16 Q4 Sec Tws Rng

X

Y

CP 00646

1 1 4 07 19S 29E

583155 3615551

Driller License: GLENN'S WATER WELL SERVICE

Driller Name: GLENN, CLARK A."CORKY" (LD)

Drill Start Date: 10/29/1981

Drill Finish Date: 11/03/1981

Plug Date:

Log File Date: 11/20/1981

PCW Rcv Date:

Source: Shallow

Pump Type:

Pipe Discharge Size:

Estimated Yield:

Casing Size: 6.63

Depth Well: 199 feet

Depth Water: 150 feet

Water Bearing Stratifications:

Top Bottom Description

175 194 Other/Unknown

Casing Perforations:

Top Bottom

150 199

The data is furnished by the NMOSE/ISC and is accepted by the recipient with the expressed understanding that the OSE/ISC make no warranties, expressed or implied, concerning the accuracy, completeness, reliability, usability, or suitability for any particular purpose of the data.