

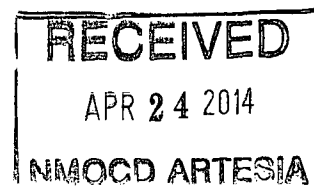
Basin Environmental Service Technologies, LLC

3100 Plains Highway
P. O. Box 301
Lovington, New Mexico 88260

jwlowry@basinenv.com

Office: (575) 396-2378

Fax: (575) 396-1429



REMEDIATION SUMMARY AND RISK-BASED SITE CLOSURE REQUEST

**BOPCO, LP
POKER LAKE UNIT #188Y
Eddy County, New Mexico
Unit Letter "C" (NE/NW), Section 5, Township 24 South, Range 30 East
Latitude 32.25196° North, Longitude 103.90815° West
NMOCD Reference # 2RP-_____**

Prepared For:

**BOPCO, LP
522 W. Mermod, Suite 704
Carlsbad, New Mexico 88220**

Prepared By:

**Basin Environmental Service Technologies, LLC
3100 Plains Highway
Lovington, New Mexico 88260**

April 2014

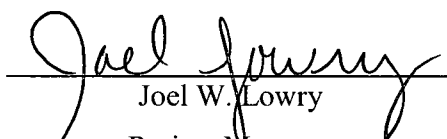

Joel W. Lowry
Project Manager

TABLE OF CONTENTS

1.0 INTRODUCTION & BACKGROUND INFORMATION.....	1
2.0 NMOCD SITE CLASSIFICATION.....	1
3.0 SUMMARY OF SOIL REMEDIATION ACTIVITIES.....	2
4.0 QA/QC PROCEDURES.....	5
4.1 Soil Sampling.....	5
4.2 Decontamination of Equipment.....	5
4.3 Laboratory Protocol.....	5
5.0 SITE CLOSURE REQUEST.....	5
6.0 LIMITATIONS.....	6
7.0 DISTRIBUTION.....	7

FIGURES

Figure 1 – Site Location Map

Figure 2a – Site & Sample Location Map – Eastern Portion of Release Site

Figure 2b – Site & Sample Location Map – Central Portion of Release Site

Figure 2c – Site & Sample Location Map – Western Portion of Release Site

TABLES

Table 1 – Concentrations of Benzene, BTEX, TPH & Chloride in Soil

APPENDICES

Appendix A – Release Notification and Corrective Action (Form C-141)

Appendix B – Photographs

Appendix C – Laboratory Analytical Reports

1.0 INTRODUCTION & BACKGROUND INFORMATION

Basin Environmental Service Technologies, LLC (Basin), on behalf of BOPCO, LP (BOPCO), has prepared this *Remediation Summary and Risk-Based Site Closure Request* for the release site known as Poker Lake Unit #188Y (PLU #188Y). The legal description of the release site is Unit Letter "C" (NE/NW), Section 5, Township 24 South, Range 30 East, in Eddy County, New Mexico. The geographic coordinates of the release site are 32.25196° North latitude and 103.90815° West longitude. The property affected by the release is owned by the United States Department of the Interior and administered by the Bureau of Land Management (BLM). A "Site Location Map" is provided as Figure 1.

On January 10, 2014, BOPCO discovered a release had occurred on a three-inch (3") fiberglass high-pressure flow line transporting produced water to the PLU #188Y SWD injection well. The "Release Notification and Corrective Action" (Form C-141) indicated the fiberglass flow line ruptured for reasons unknown, resulting in the release of two hundred and fifty barrels (250 bbls) of produced water. The release was reported to the New Mexico Oil Conservation Division (NMOCD) Artesia District Office immediately upon discovery. The initial Form C-141 indicated the release affected approximately twenty-three thousand, two hundred and twenty-four square feet (23,224 ft²) of pasture and seven thousand, eight hundred and eighty-eight square feet (7,888 ft²) of lease road and an adjacent well pad. During initial response activities, the line segment was isolated, and approximately thirty barrels (30 bbls) of free standing fluid was recovered with a vacuum truck. The affected line segment has since been replaced. The Form C-141 is provided as Appendix A. General photographs of the release site are provided as Appendix B.

2.0 NMOCD SITE CLASSIFICATION

A search of the New Mexico Water Rights Reporting System (NMWRRS) database maintained by the New Mexico Office of the State Engineer (NMOSE) indicated information was unavailable for Section 5, Township 24 South, Range 30 East. A depth to groundwater reference map utilized by the NMOCD indicates groundwater should be encountered at approximately two hundred and twenty-five (225) to two hundred and fifty feet (250') below ground surface (bgs). Based on the NMOCD ranking system, zero (0) points will be assigned to the site as a result of this criterion.

A search of the NMWRRS database indicated there are no water wells within one thousand (1,000) feet of the release. Based on the NMOCD ranking system, zero (0) points will be assigned to the site as a result of this criterion.

There are no surface water bodies within one thousand (1,000) feet of the release. Based on the NMOCD ranking system, zero (0) points will be assigned to the site as a result of this criterion.

NMOCD guidelines indicate the PLU #188Y release site has an initial ranking score of zero (0) points. The soil remediation levels for a site with a ranking score of zero (0) points are as follows:

- Benzene – 10 mg/Kg (ppm)
- Benzene, ethylbenzene, toluene and xylene (BTEX) – 50 mg/Kg (ppm)
- Total petroleum hydrocarbon (TPH) – 5,000 mg/Kg (ppm)

The New Mexico Administrative Code (NMAC) does not currently specify a remediation level for chloride concentrations in soil. Chloride remediation levels are set by the NMOCD on a site-specific basis.

3.0 SUMMARY OF SOIL REMEDIATION ACTIVITIES

On January 17, 2014, Basin began excavating impacted soil at the release site. The floor and sidewalls of the excavation were advanced until field tests suggested concentrations of BTEX, TPH and chloride were less than NMOCD Regulatory Standards. A three-foot (3') buffer of undisturbed soil was left in-situ adjacent to active and high-pressure pipelines as a safety precaution. Excavated material was stockpiled on-site, pending final disposition.

On January 20, 2014, six (6) soil samples (RP N. Floor @ 12', RP S. Floor @ 9', RP ESW #1, RP ESW #2, RP NSW and RP WSW #1) were collected from the floor and sidewalls of the excavation and submitted to Cardinal Laboratories, of Hobbs, New Mexico, for analysis of chloride concentrations by EPA Method 4500 Cl-B. Laboratory analytical results indicate chloride concentrations ranged from less than the laboratory method detection limit (MDL) for RP ESW #2 to 560 ppm for soil sample RP ESW #1. Soil sample RP S. Floor @ 9' was also analyzed for concentrations of BTEX using EPA method SW-846-8021b and TPH using EPA method SW-846 8015M. Laboratory analytical results indicated BTEX and TPH concentrations were less than the appropriate laboratory. A summary of "Concentrations of Benzene, BTEX, TPH and Chloride in Soil" is provided in Table 1. Laboratory analytical reports are provided as Appendix C. Sample locations are depicted on Figure 2a, "Site & Sample Location Map – Eastern Portion of the Release Site".

On January 24, 2014, six (6) soil samples (Exc. #1 WSW, Exc. #1 Floor #2, Exc. #2 ESW, Exc. #2 SSW, Exc. #2 Floor #1 and Exc. #2 Floor #2) were collected from the floor and sidewalls of the excavated areas and submitted to the laboratory for analysis of chloride concentrations. Laboratory analytical results indicated chloride concentrations ranged from less than the laboratory MDL for soil samples Exc. #1 WSW, Exc. #2 ESW, Exc. #2 SSW and Exc. #2 Floor #2 to 688 ppm for soil sample Exc. #2 Floor #1. Soil sample Exc. #2 Floor #1 was also analyzed for concentrations of BTEX and TPH, which were determined to be less than the appropriate laboratory MDL.

On January 28, 2014, a series of test trenches (Exc. 3 TT and Exc. 4 TT) were advanced in the primary pooling area of the release site. Exc. 3 TT was advanced in between BOPCO's three-inch (3") high-pressure fiberglass produced water line and Regency Gas's six-inch (6") natural gas buried pipeline. During the advancement of the test trench, four (4) soil samples (Exc. 3 TT @ 8', Exc. 3 TT @ 12', Exc. 3 TT @ 16' and Exc. 3 TT @ 18') were collected and submitted to the laboratory for analysis of chloride concentrations. Laboratory analytical results indicated chloride concentrations ranged from 17,000 ppm for soil sample Exc. 3 TT @ 12' to 96.0 ppm for soil sample Exc. 3 TT @ 18'. Soil sample Exc. 3 TT @ 8' was also analyzed for concentrations of BTEX and TPH, which were determined to be less than the appropriate laboratory MDL. Sample locations are depicted on Figure 2b, "Site & Sample Location Map – Central Portion of the Release Site".

Exc. 4 TT was advanced within an inferred pooling area between BOPCO's three-inch (3") high-pressure fiberglass produced water line and the caliche oilfield access road. During the advancement of the test trench, four (4) soil samples (Exc. 4 TT @ 4', Exc. 4 TT @ 8', Exc. 4 TT @ 12' and Exc. 4 TT @ 18') were collected and submitted to the laboratory for analysis of chloride concentrations. Laboratory analytical results indicated chloride concentrations ranged from 6,000 ppm for soil sample Exc. 4 TT @ 8' to 928 ppm for soil sample Exc. 4 TT @ 18'. Soil sample Exc. 4 TT @ 4' was also analyzed for concentrations of BTEX and TPH, which were determined to be less than the appropriate laboratory MDL.

On January 29, 2014, nine (9) soil samples (Exc. 4b NSW, Exc. 4b WSW, Exc. 4c NSW, Exc. 4c ESW, Exc. 4 ESW, Exc. 3 NSW, Exc. 3 ESW, Exc. 3 SSW #1 and Exc. 3 East Floor) were collected from the floor and sidewalls of the excavated areas and submitted to the laboratory for analysis of chloride concentrations. Laboratory analytical results indicated chloride concentrations ranged from less than the laboratory MDL for soil samples Exc. 4c NSW, Exc. 4c ESW, Exc. 4 ESW, Exc. 3 NSW, Exc. 3 ESW and Exc. 3 SSW #1 to 320 ppm for soil sample Exc. 4b WSW. Soil sample Exc. 3 East Floor was also analyzed for concentrations of BTEX and TPH, which were determined to be less than the appropriate laboratory MDL.

On January 31, 2014, four (4) soil samples (Exc. 4b Floor @ 4', Exc. 4c Floor @ 4', Exc. 4 East Floor and In-Situ #1) were collected from the floor and sidewalls of the excavated areas and submitted to the laboratory for analysis of chloride concentrations. Laboratory analytical results indicated chloride concentrations ranged from 464 ppm for soil sample Exc. 4 East Floor to 11,300 ppm for soil sample In-Situ #1. Soil sample In-Situ #1 was collected to characterize soil left in place adjacent to BOPCO's high-pressure fiberglass flow line.

On February 4, 2014, eight (8) soil samples (Exc. 3b Floor, Exc. 5 NSW, Exc. 5 Floor, Exc. 5 SSW, Exc. 6 NSW, Exc. 6 Floor, Exc. 6 SSW and In-Situ #2) were collected from the floor and sidewalls of the excavated areas and submitted to the laboratory for analysis of chloride concentrations. Laboratory analytical results indicated chloride concentrations ranged from less than the laboratory MDL for soil sample Exc. 6 SSW to 6,080 ppm for soil sample In-Situ #2. Soil sample Exc. 5 Floor was also analyzed for concentrations of BTEX and TPH, which were determined to be less than the appropriate laboratory MDL.

On February 11, 2014, eleven (11) soil samples (Exc. 7 NSW @ 3', Exc. 7 WSW @ 3', Exc. 7 East Floor @ 4', Exc. 7 West Floor @ 4', Road Floor #1 @ 18", Road Floor #2 @ 18", Road SSW #1, Exc. 6b SSW, Exc. 6b WSW, Exc. 6b ESW and Exc. 6b Floor @ 4') were collected from the floor and sidewalls of the excavated areas and submitted to the laboratory for analysis of chloride concentrations. Laboratory analytical results indicated chloride concentrations ranged from less than the laboratory MDL for soil samples Exc. 7 NSW @ 3', Exc. 7 WSW @ 3', Road Floor #1 @ 18" Road SSW #1, Exc. 6b SSW, Exc. 6b WSW, and Exc. 6b ESW to 160 ppm for soil sample Exc. 6b Floor @ 4'. Soil samples Exc. 7 West Floor @ 4', Road Floor #2 @ 18" and Exc. 6b Floor @ 4' were also analyzed for concentrations TPH, which were determined to be less than the appropriate laboratory MDL. Soil sample Road Floor #2 @ 18" was also analyzed for concentrations of BTEX, which were determined to be less than the laboratory MDL. Sample

locations are depicted on Figure 2c, "Site & Sample Location Map – Western Portion of the Release Site".

On February 12, 2014, as per the NMOCD, a 20-millimeter polyurethane liner was installed in the floor of Excavation #3 at approximately four feet (4') bgs. This engineering control was designed to inhibit the downward migration of contaminants left in-situ.

On February 14, 2014, eight (8) soil samples (Road Floor #3, Road Floor #4, Road Floor #5, Road Floor #6, Road Floor #7, Road Floor #8, Road Floor #9 and South Road #1) were collected from the floor of excavated road and submitted to the laboratory for analysis of chloride concentrations. Laboratory analytical results indicated chloride concentrations ranged from less than the laboratory MDL for soil sample Road Floor #5 to 368 ppm for soil sample Road Floor #4.

On February 19, 2014, seven (7) soil samples (Pad NSW #1, Pad NSW #2, Pad NSW #3, Pad ESW #1, Pad SSW #1, Pad Floor #1 and Pad Floor #2) were collected from the excavated area on the caliche well pad and submitted to the laboratory for analysis of chloride concentrations. Laboratory analytical results indicated chloride concentrations ranged from 16.0 ppm for soil sample Pad NSW #1 to 384 ppm for soil sample Pad NSW #3. Soil sample Pad Floor #2 was also analyzed for concentrations of BTEX and TPH, which were determined to be less than the appropriate laboratory MDL.

On February 24, 2014, six (6) soil samples (Pad SSW #2, Pad SSW #3, Pad NSW #4, Pad WSW #1, Pad Floor #3 and Pad Floor #4) were collected from the excavated area on the caliche well pad and submitted to the laboratory for analysis of chloride concentrations. Laboratory analytical results indicated chloride concentrations ranged from 80.0 ppm for soil sample Pad Floor #3 to 928 ppm for soil sample Pad WSW #1. Soil sample Pad Floor #4 was also analyzed for concentrations of BTEX and TPH, which were determined to be less than the appropriate laboratory MDL.

Between January 23, and February 26, 2014, approximately four thousand, six hundred and eighty cubic yards (4,680 yd³) of impacted material was transported to Lea Land, Inc. (NMOCD Permit #WM-01-035) for disposal. The final dimensions of the primary excavation at the release point were approximately twenty-five feet (25') in width, one hundred feet (100') in length and four (4) to twelve feet (12') in depth. The final dimensions of Excavation #2 were approximately twenty-one feet (21') in width, ninety feet (90') in length and four feet (4') in depth. The final dimensions of Excavation #3 were approximately seventeen feet (17') in width, sixty-two feet (62') in length and four (4) to six feet (6') in depth. The final dimensions of Excavation #4 were approximately thirty-two feet (32') in width, seventy feet (70') in length and four feet (4') in depth. The final dimensions of Excavation #5 were approximately seven feet (7') in width, fifty-six feet (56') in length and six feet (6') in depth. The final dimensions of Excavation #6 were approximately forty feet (40') in width, forty-two feet (42') in length and four feet (4') in depth. The final dimensions of Excavation #7 were approximately thirty feet (30') in width, thirty-seven feet (37') in length and four feet (4') in depth. The final dimensions of the excavated area on the caliche well pad were approximately eighty-eight feet (88') in width, one hundred and ninety feet (190') in length and four feet (4') in depth. Approximately four hundred and fifty feet (450') of a caliche lease road was excavated to approximately eighteen inches (18") bgs.

Upon receiving laboratory analytical data from confirmation soil samples, the excavated areas in the affected pasture were backfilled with locally purchased, non-impacted material. The will be reseeded with a BLM-approved seed mixture at a time more conducive to germination.

The affected oil field access road and caliche well pad were backfilled and compacted with non-impacted caliche derived from reducing the PLU #188Y well pad, east of the release site. An area measuring approximately sixty feet (60') in width and one hundred and seventy-five feet (175') in length was reclaimed in accordance with the BLM.

4.0 QA/QC PROCEDURES

4.1 Soil Sampling

Soil samples were delivered to Cardinal Laboratories, Inc., in Hobbs, New Mexico, for BTEX, TPH and/or chloride analyses using the methods described below:

- BTEX concentrations in accordance with EPA Method SW-846 8021b
- TPH concentrations in accordance with EPA Method SW-846 8015M
- Chloride concentrations in accordance with EPA Method 4500 Cl-B

4.2 Decontamination of Equipment

Cleaning of the sampling equipment was the responsibility of the environmental technician. Prior to use, and between each sample, the sampling equipment was cleaned with Liqui-Nox® detergent and rinsed with distilled water.

4.3 Laboratory Protocol

The laboratory was responsible for proper QA/QC procedures after signing the chain-of-custody form(s). These procedures were either transmitted with the laboratory reports or are on file at the laboratory.

5.0 SITE CLOSURE REQUEST

Remediation activities conducted at the PLU #188Y Release Site met the objectives set forth by the NMOCD and BLM. Impacted soil was excavated to the maximum extent practicable, given the presence of numerous active and high-pressure pipelines. As per the NMOCD, a twenty-millimeter (20-mil) polyurethane liner was installed in the floor of Excavation #3 at approximately four feet (4') bgs. This engineering control was designed to inhibit the vertical migration of contaminants left in-situ. Based on the results of confirmation soil samples and the installation of an approved engineering control, Basin recommends BOPCO provide the NMOCD Artesia District Office and the BLM a copy of this *Remediation Summary and Risk-Based Site Closure Request* and request the NMOCD grant site closure to the PLU #188Y release site.

6.0 LIMITATIONS

Basin Environmental Service Technologies, LLC, has prepared this *Remediation Summary and Risk-Based Site Closure Request* to the best of its ability. No other warranty, expressed or implied, is made or intended. Basin has examined and relied upon documents referenced in the report and on oral statements made by certain individuals. Basin has not conducted an independent examination of the facts contained in referenced materials and statements. Basin has presumed the genuineness of these documents and statements and that the information provided therein is true and accurate. Basin has prepared this report in a professional manner, using the degree of skill and care exercised by similar environmental consultants. Basin notes that the facts and conditions referenced in this report may change over time, and the conclusions and recommendations set forth herein are applicable only to the facts and conditions as described at the time of this report.

This report has been prepared for the benefit of BOPCO, LP. The information contained in this report, including all exhibits and attachments, may not be used by any other party without the express consent of Basin Environmental Service Technologies, LLC, and/or BOPCO, LP.

7.0 DISTRIBUTION:

- Copy 1: Mike Bratcher
New Mexico Energy, Minerals and Natural Resources Department
Oil Conservation Division (District 2)
1301 E. Grand Avenue
Artesia, NM 88210
- Copy 2: James Amos
Bureau of Land Management
602 E. Greene Street
Carlsbad, New Mexico 88220
- Copy 3: Tony Savoie
BOPCO, LP
522 W. Mermod, Suite 704
Carlsbad, NM 88220
- Copy 4: Basin Environmental Service Technologies, LLC
P.O. Box 301
Lovington, NM 88260

FIGURES



1,000 500 0 1,000 2,000
 Distance in Feet

Figure 1
Site Location Map
BOPCO, LP
Poker Lake Unit #188Y
Eddy County, New Mexico

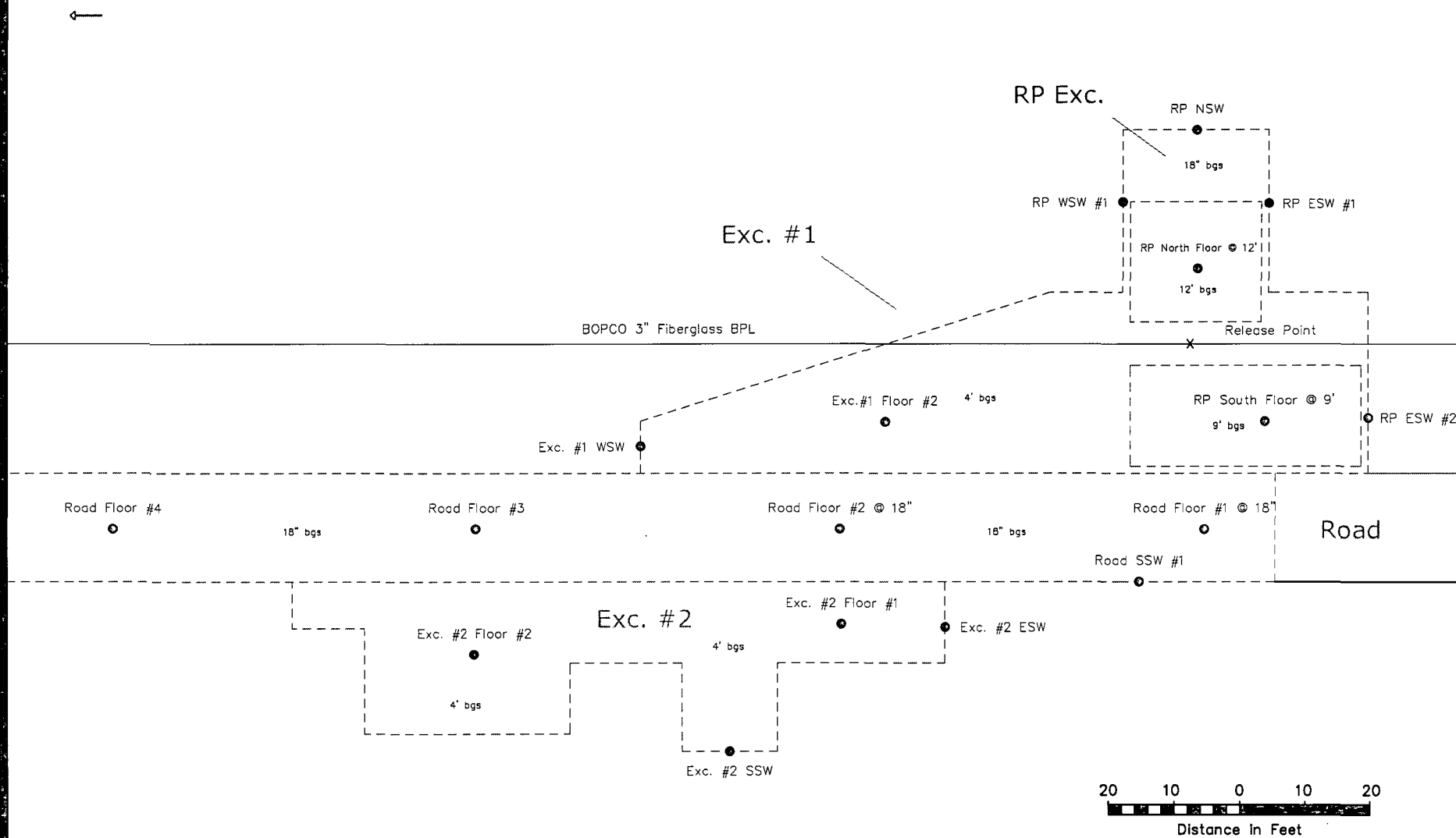


Basin Environmental Service Technologies, LLC
 3100 Plains Hwy.
 Lovington, NM 88260

Drawn By: BJA	Checked By: BRB
January 17, 2014	Scale: 1" = 2,000'



Figure 2b

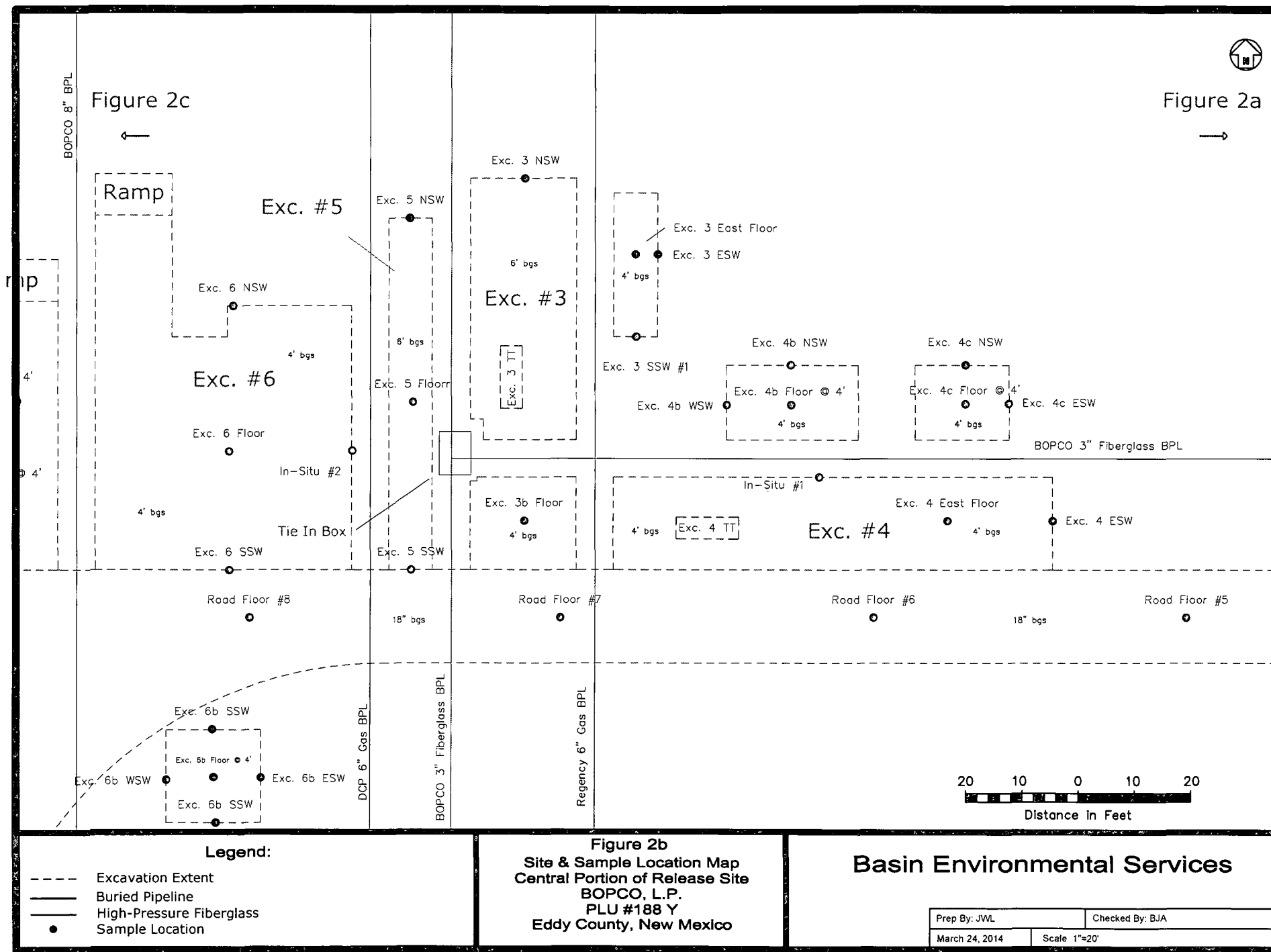


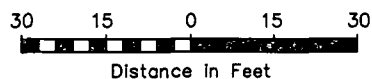
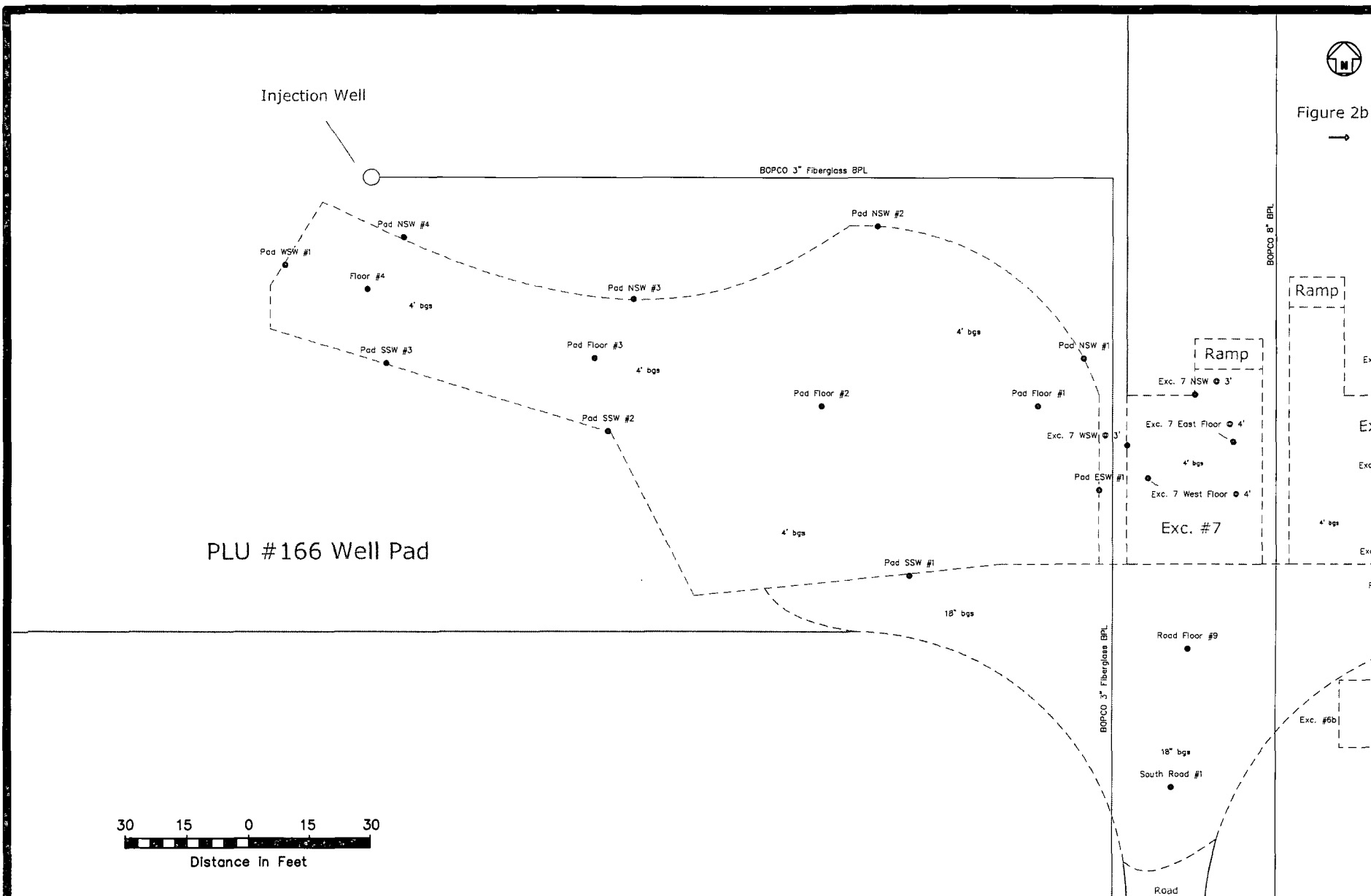
- Legend:**
- Excavation Extent
 - Buried Pipeline
 - High-Pressure Fiberglass
 - Sample Location

Figure 2a
Site & Sample Location Map
Eastern Portion of Release Site
BOPCO, L.P.
PLU #188 Y
Eddy County, New Mexico

Basin Environmental Services

Prep By: JWL	Checked By: BJA
March 24, 2014	Scale 1"=20'





Legend:

- Excavation Extent
- Buried Pipeline
- High-Pressure Fiberglass
- Sample Location
- Caliche Well Pad

Figure 2c
 Site & Sample Location Map
 Western Portion of Release Site
 BOPCO, L.P.
 PLU #188 Y
 Eddy County, New Mexico

Basin Environmental Services

Prep By: JWL	Checked By: BJA
March 24, 2014	Scale 1"=30'

TABLES

TABLE 1

CONCENTRATIONS OF BENZENE, BTEX, TPH & CHLORIDE IN SOIL

BOPCO, LP
PLU #188Y
EDDY COUNTY, NEW MEXICO

SAMPLE LOCATION	SAMPLE DEPTH (BGS)	SAMPLE DATE	SOIL STATUS	METHOD: EPA SW 846-8021B, 5030					METHOD: 8015M			TOTAL TPH C ₈ -C ₃₅ (mg/Kg)	4500 C1-B CHLORIDE (mg/Kg)
				BENZENE (mg/Kg)	TOLUENE (mg/Kg)	ETHYL- BENZENE (mg/Kg)	TOTAL XYLENES (mg/Kg)	TOTAL BTEX (mg/Kg)	GRO C ₆ -C ₁₂ (mg/Kg)	DRO C ₁₃ -C ₂₈ (mg/Kg)	ORO C ₂₉ -C ₃₅ (mg/Kg)		
RP N. Floor @ 12'	12'	1/20/2014	In-Situ	-	-	-	-	-	-	-	-	-	112
RP S. Floor @ 9'	9'	1/20/2014	In-Situ	<0.050	<0.050	<0.050	<0.150	<0.300	<10.0	<10.0	<10.0	<10.0	544
RP ESW #1	9'	1/20/2014	In-Situ	-	-	-	-	-	-	-	-	-	560
RP ESW #2	5'	1/20/2014	In-Situ	-	-	-	-	-	-	-	-	-	<16.0
RP NSW	9'	1/20/2014	In-Situ	-	-	-	-	-	-	-	-	-	224
RP WSW #1	5'	1/20/2014	In-Situ	-	-	-	-	-	-	-	-	-	176
Exc. #1 WSW	3'	1/24/2014	In-Situ	-	-	-	-	-	-	-	-	-	<16.0
Exc. #1 Floor #2	4'	1/24/2014	In-Situ	-	-	-	-	-	-	-	-	-	96.0
Exc. #2 ESW	3'	1/24/2014	In-Situ	-	-	-	-	-	-	-	-	-	<16.0
Exc. #2 SSW	3'	1/24/2014	In-Situ	-	-	-	-	-	-	-	-	-	<16.0
Exc. #2 Floor #1	4'	1/24/2014	In-Situ	<0.050	<0.050	<0.050	<0.150	<0.300	<10.0	<10.0	<10.0	<10.0	688
Exc. #2 Floor #2	4'	1/24/2014	In-Situ	-	-	-	-	-	-	-	-	-	<16.0
Exc. 3 TT @ 8'	8'	1/28/2014	In-Situ	<0.050	<0.050	<0.050	<0.150	<0.300	<10.0	<10.0	<10.0	<10.0	10,900
Exc. 3 TT @ 12'	12'	1/28/2014	In-Situ	-	-	-	-	-	-	-	-	-	17,000
Exc. 3 TT @ 16'	16'	1/28/2014	In-Situ	-	-	-	-	-	-	-	-	-	2,200
Exc. 3 TT @ 18'	18'	1/28/2014	In-Situ	-	-	-	-	-	-	-	-	-	96.0
Exc. 4 TT @ 4'	4'	1/28/2014	In-Situ	<0.050	<0.050	<0.050	<0.150	<0.300	<10.0	<10.0	<10.0	<10.0	3,280
Exc. 4 TT @ 8'	8'	1/28/2014	In-Situ	-	-	-	-	-	-	-	-	-	6,000
Exc. 4 TT @ 12'	12'	1/28/2014	In-Situ	-	-	-	-	-	-	-	-	-	1,760
Exc. 4 TT @ 18'	18'	1/28/2014	In-Situ	-	-	-	-	-	-	-	-	-	928
Exc. 4b NSW	3'	1/29/2014	In-Situ	-	-	-	-	-	-	-	-	-	272.0
Exc. 4b WSW	3'	1/29/2014	In-Situ	-	-	-	-	-	-	-	-	-	320.0
Exc. 4c NSW	3'	1/29/2014	In-Situ	-	-	-	-	-	-	-	-	-	<16.0
Exc. 4c ESW	3'	1/29/2014	In-Situ	-	-	-	-	-	-	-	-	-	<16.0
Exc. 4 ESW	3'	1/29/2014	In-Situ	-	-	-	-	-	-	-	-	-	<16.0
Exc. 3 NSW	3'	1/29/2014	In-Situ	-	-	-	-	-	-	-	-	-	<16.0
Exc. 3 ESW	3'	1/29/2014	In-Situ	-	-	-	-	-	-	-	-	-	<16.0
Exc. 3 SSW #1	3'	1/29/2014	In-Situ	-	-	-	-	-	-	-	-	-	<16.0
Exc. 3 East Floor	4'	1/29/2014	In-Situ	<0.050	<0.050	<0.050	<0.150	<0.300	<10.0	<10.0	<10.0	<10.0	48.0
Exc. 4b Floor @ 4'	4'	1/31/2014	In-Situ	-	-	-	-	-	-	-	-	-	544
Exc. 4c Floor @ 4'	4'	1/31/2014	In-Situ	-	-	-	-	-	-	-	-	-	1,100
Exc. 4 East Floor	4'	1/31/2014	In-Situ	-	-	-	-	-	-	-	-	-	464
In-Situ #1	3'	1/31/2014	In-Situ	-	-	-	-	-	-	-	-	-	11,300
Exc. 3b Floor	4'	2/4/2014	In-Situ	-	-	-	-	-	-	-	-	-	2,240
Exc. 5 NSW	3'	2/4/2014	In-Situ	-	-	-	-	-	-	-	-	-	128
Exc. 5 Floor	4'	2/4/2014	In-Situ	<0.050	<0.050	<0.050	<0.150	<0.300	<10.0	<10.0	<10.0	<10.0	2,920
Exc. 5 SSW	3'	2/4/2014	In-Situ	-	-	-	-	-	-	-	-	-	16.0
Exc. 6 NSW	3'	2/4/2014	In-Situ	-	-	-	-	-	-	-	-	-	64.0
Exc. 6 Floor	4'	2/4/2014	In-Situ	-	-	-	-	-	-	-	-	-	32.0
Exc. 6 SSW	3'	2/4/2014	In-Situ	-	-	-	-	-	-	-	-	-	<16.0
In-Situ #2	2'	2/4/2014	In-Situ	-	-	-	-	-	-	-	-	-	6,080
Exc. 7 NSW @ 3'	3'	2/11/2014	In-Situ	-	-	-	-	-	-	-	-	-	<16.0
Exc. 7 WSW @ 3'	3'	2/11/2014	In-Situ	-	-	-	-	-	-	-	-	-	<16.0
Exc. 7 East Floor @ 4'	4'	2/11/2014	In-Situ	-	-	-	-	-	-	-	-	-	16.0
Exc. 7 West Floor @ 4'	4'	2/11/2014	In-Situ	-	-	-	-	-	<10.0	<10.0	<10.0	<10.0	80.0
Road Floor #1 @ 18"	1.5'	2/11/2014	In-Situ	-	-	-	-	-	-	-	-	-	<16.0
Road Floor #2 @ 18"	1.5'	2/11/2014	In-Situ	<0.050	<0.050	<0.050	<0.150	<0.300	<10.0	<10.0	<10.0	<10.0	48.0
Road SSW #1	3'	2/11/2014	In-Situ	-	-	-	-	-	-	-	-	-	<16.0
Exc. 6b SSW	3'	2/11/2014	In-Situ	-	-	-	-	-	-	-	-	-	<16.0
Exc. 6b WSW	3'	2/11/2014	In-Situ	-	-	-	-	-	-	-	-	-	<16.0
Exc. 6b ESW	3'	2/11/2014	In-Situ	-	-	-	-	-	-	-	-	-	<16.0
Exc. 6b Floor @ 4'	4'	2/11/2014	In-Situ	-	-	-	-	-	<10.0	<10.0	<10.0	<10.0	160
Road Floor #3	18"	2/14/2014	In-Situ	-	-	-	-	-	-	-	-	-	176
Road Floor #4	18"	2/14/2014	In-Situ	-	-	-	-	-	-	-	-	-	368
Road Floor #5	18"	2/14/2014	In-Situ	-	-	-	-	-	-	-	-	-	<16.0
Road Floor #6	18"	2/14/2014	In-Situ	-	-	-	-	-	-	-	-	-	96.0
Road Floor #7	18"	2/14/2014	In-Situ	-	-	-	-	-	-	-	-	-	672
Road Floor #8	18"	2/14/2014	In-Situ	-	-	-	-	-	-	-	-	-	16.0
Road Floor #9	18"	2/14/2014	In-Situ	-	-	-	-	-	-	-	-	-	48.0
South Road #1	18"	2/14/2014	In-Situ	-	-	-	-	-	-	-	-	-	208
Pad NSW #1	3'	2/19/2014	In-Situ	-	-	-	-	-	-	-	-	-	16.0
Pad NSW #2	3'	2/19/2014	In-Situ	-	-	-	-	-	-	-	-	-	48.0
Pad NSW #3	3'	2/19/2014	In-Situ	-	-	-	-	-	-	-	-	-	384
Pad ESW #1	3'	2/19/2014	In-Situ	-	-	-	-	-	-	-	-	-	64.0
Pad SSW #1	3'	2/19/2014	In-Situ	-	-	-	-	-	-	-	-	-	32.0
Pad Floor #1	4'	2/19/2014	In-Situ	-	-	-	-	-	-	-	-	-	32.0
Pad Floor #2	4'	2/19/2014	In-Situ	<0.050	<0.050	<0.050	<0.150	<0.300	<10.0	<10.0	<10.0	<10.0	48.0
Pad SSW #2	3'	2/24/2014	In-Situ	-	-	-	-	-	-	-	-	-	672
Pad SSW #3	3'	2/24/2014	In-Situ	-	-	-	-	-	-	-	-	-	304
Pad NSW #4	3'	2/24/2014	In-Situ	-	-	-	-	-	-	-	-	-	192
Pad WSW #1	3'	2/24/2014	In-Situ	-	-	-	-	-	-	-	-	-	928
Pad Floor #3	4'	2/24/2014	In-Situ	-	-	-	-	-	-	-	-	-	80.0
Pad Floor #4	4'	2/24/2014	In-Situ	<0.050	<0.050	<0.050	<0.150	<0.300	<10.0	<10.0	<10.0	<10.0	640
NMOCDC Criteria				10				50				5,000	1,000
- = Not analyzed.													

APPENDICES

Appendix A
Release Notification and Corrective Action
(Form C-141)

District I
1625 N. French Dr., Hobbs, NM 88240
District II
811 S. First St., Artesia, NM 88210
District III
1000 Rio Brazos Road, Aztec, NM 87410
District IV
1220 S. St. Francis Dr., Santa Fe, NM 87505

State of New Mexico
Energy Minerals and Natural Resources

Oil Conservation Division
1220 South St. Francis Dr.
Santa Fe, NM 87505

Form C-141
Revised August 8, 2011

Submit 1 Copy to appropriate District Office in
accordance with 19.15.29 NMAC.

BLM Copy
1/15/14

Release Notification and Corrective Action

OPERATOR

☒ Initial Report ☐ Final Report

Name of Company: BOPCO, L.P.	Contact: Tony Savoie
Address: 522 W. Mermod, Suite 704 Carlsbad, N.M. 88220	Telephone No. 575-887-7329
Facility Name: PLU-188Y The injection line spill is 630 ft. West of the well.	Facility Type: Exploration and Production

Surface Owner: U.S.A.	Mineral Owner: U.S.A.	API No. 30-015-33776
-----------------------	-----------------------	----------------------

LOCATION OF RELEASE

Unit Letter C	Section 5	Township 24S	Range 30E	Feet from the 725	North/South Line North	Feet from the 1270	East/West Line West	County: Eddy
------------------	--------------	-----------------	--------------	----------------------	---------------------------	-----------------------	------------------------	-----------------

Latitude N 32.25196 Longitude W 103.90815

NATURE OF RELEASE

Type of Release: Produced water	Volume of Release: 250 bbls.	Volume Recovered: 30 bbls.
Source of Release: 3" fiberglass high pressure flow line	Date and Hour of Occurrence: 1/10/14 Time Unknown	Date and Hour of Discovery: 1/10/14 at 12:30 p.m.
Was Immediate Notice Given? <input checked="" type="checkbox"/> Yes <input type="checkbox"/> No <input type="checkbox"/> Not Required	If YES, To Whom? NMOCD emergency #104 and the BLM	
By Whom? Tony Savoie	Date and Hour: 1/10/14 at 3:41 p.m.	
Was a Watercourse Reached? <input type="checkbox"/> Yes <input checked="" type="checkbox"/> No	If YES, Volume Impacting the Watercourse.	

If a Watercourse was Impacted, Describe Fully.*

Describe Cause of Problem and Remedial Action Taken.*

The fiberglass injection line ruptured, cause unknown. The line segment was isolated until the section of line can be replaced

Describe Area Affected and Cleanup Action Taken.*

Approximately 23,224 sq. ft. of pasture and approximately 7,888 sq. ft. of well pad and road were impacted by the release. All of the free standing fluid was recovered with a vacuum truck. The area was surveyed with a GIS and the data was given to the BLM, permission to start removing contamination was received at 2:00 p.m. on 1/14/14. Crews will start removing the impacted soil when the one-call clears. The remediation will comply with the NMOCD and BLM remediation guidelines.

I hereby certify that the information given above is true and complete to the best of my knowledge and understand that pursuant to NMOCD rules and regulations all operators are required to report and/or file certain release notifications and perform corrective actions for releases which may endanger public health or the environment. The acceptance of a C-141 report by the NMOCD marked as "Final Report" does not relieve the operator of liability should their operations have failed to adequately investigate and remediate contamination that pose a threat to ground water, surface water, human health or the environment. In addition, NMOCD acceptance of a C-141 report does not relieve the operator of responsibility for compliance with any other federal, state, or local laws and/or regulations.

OIL CONSERVATION DIVISION

Signature:

Tony Savoie

Printed Name: Tony Savoie

Approved by Environmental Specialist:

Title: Waste Management and Remediation Specialist

Approval Date:

Expiration Date:

E-mail Address: tasavoie@basspet.com

Conditions of Approval:

Attached ☐

Date:

1/14/14

Phone: 432-556-8730

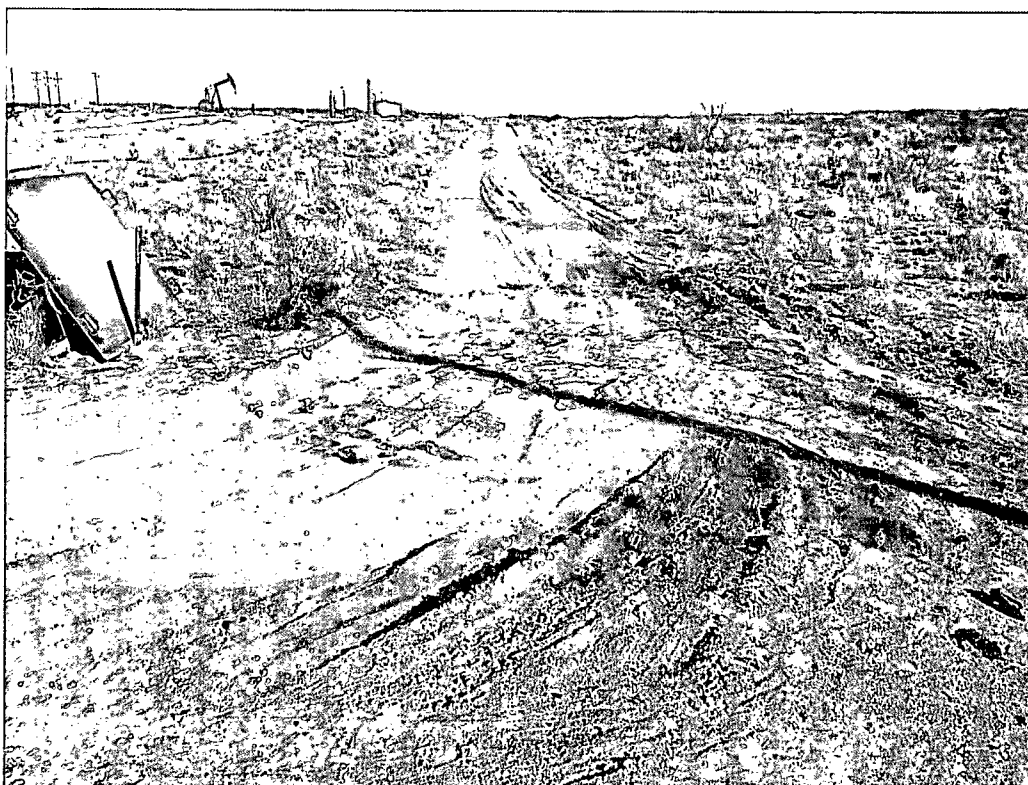
* Attach Additional Sheets If Necessary

Appendix B

Photographs



Photograph of the initial release at the PLU #188Y Release Site.



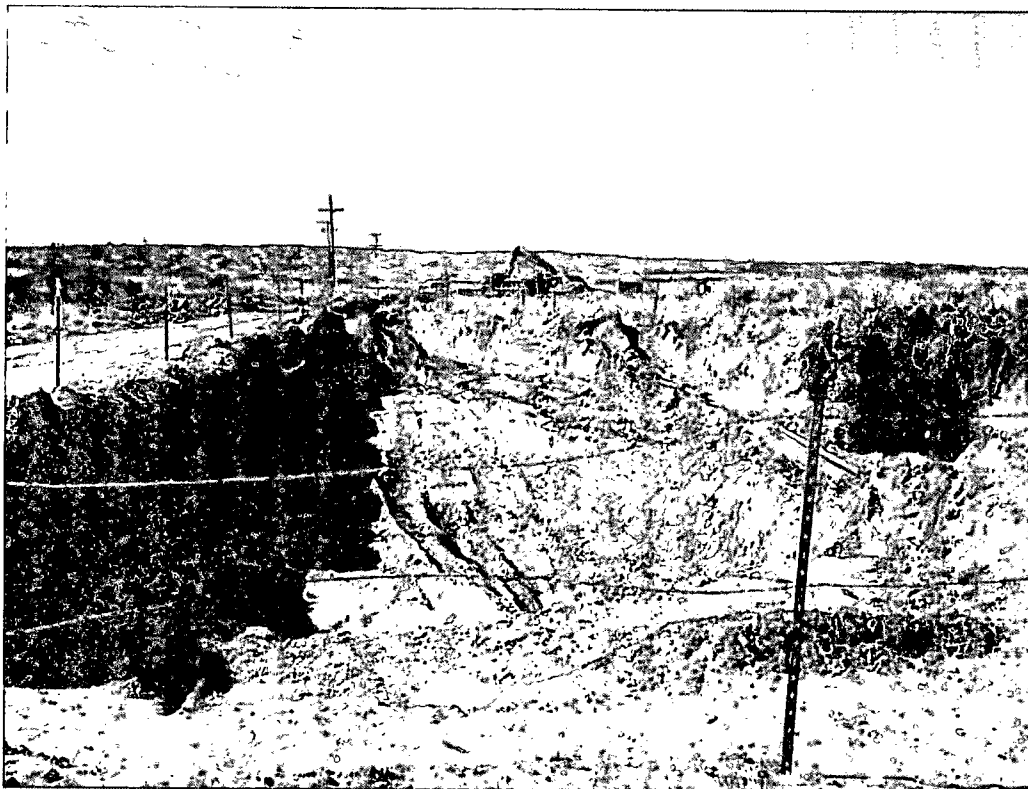
Photograph of the initial release at the PLU #188Y Release Site.



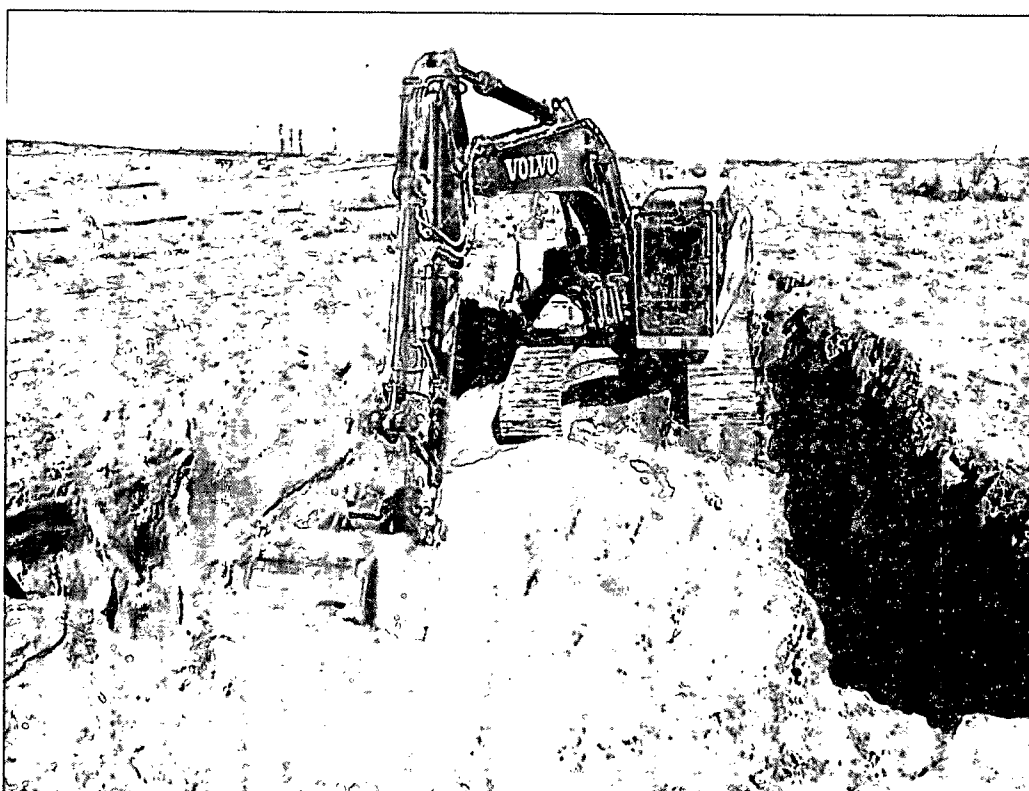
Photograph of the initial release at the PLU #188Y Release Site.



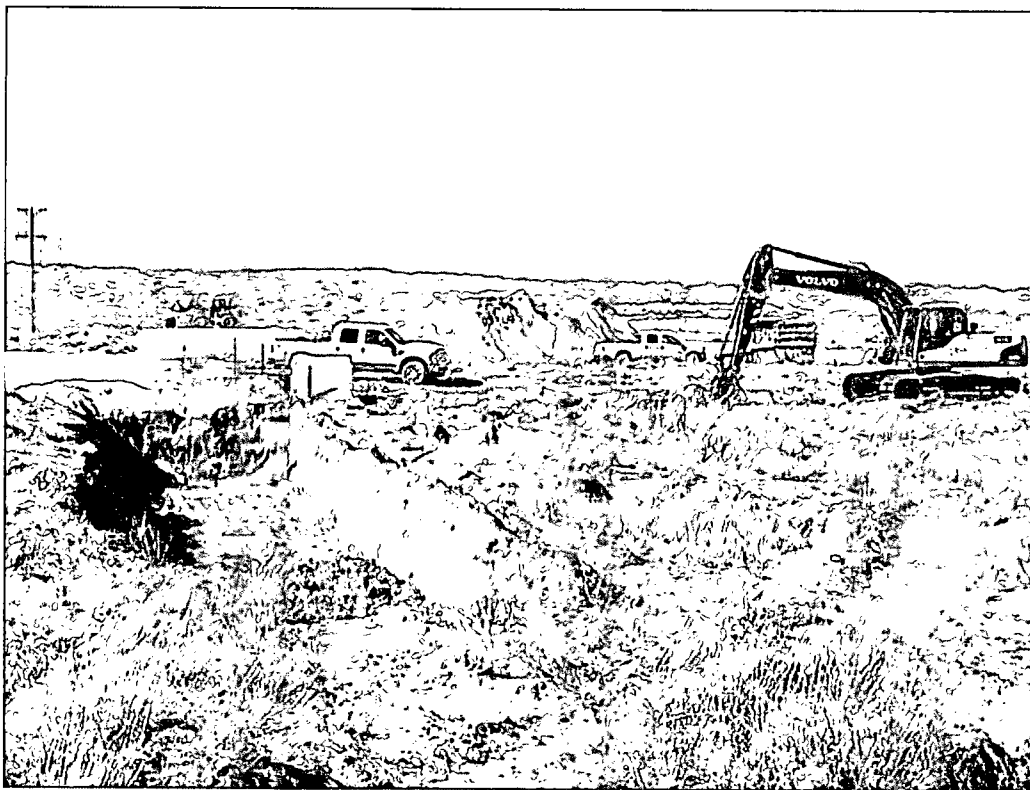
Photograph of the initial release and affected well pad at the PLU #188Y Release Site.



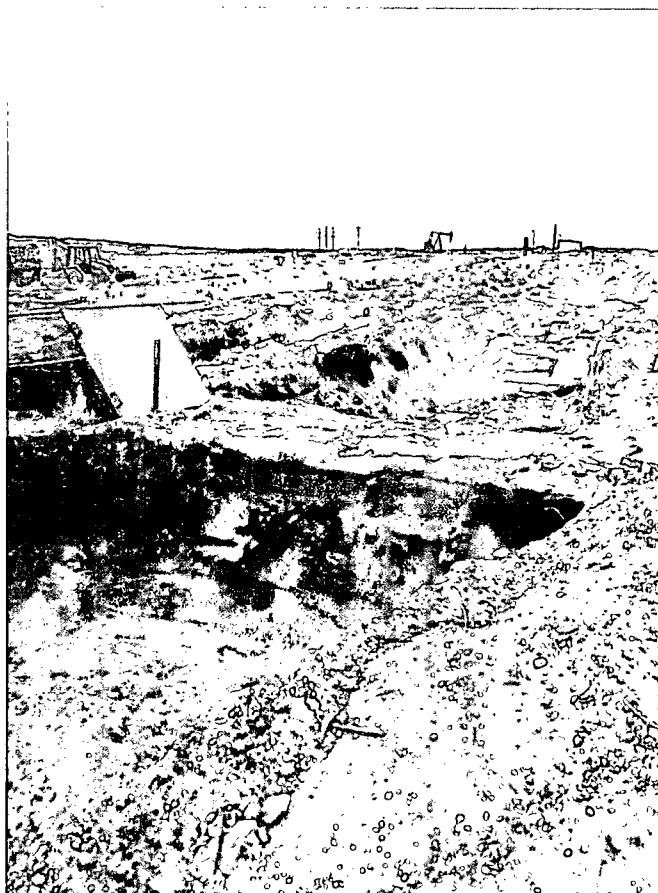
Photograph of the excavated release point area at the PLU #188Y Release Site.



Photograph of the advancement of delineation trench in Excavation #3 at the PLU #188Y Release Site.



Photograph of Excavation #4 at the PLU #188Y Release Site.



Photograph of Excavations #3 and #5 at the PLU #188Y Release Site.



Photograph of Excavation #6 at the PLU #188Y Release Site.



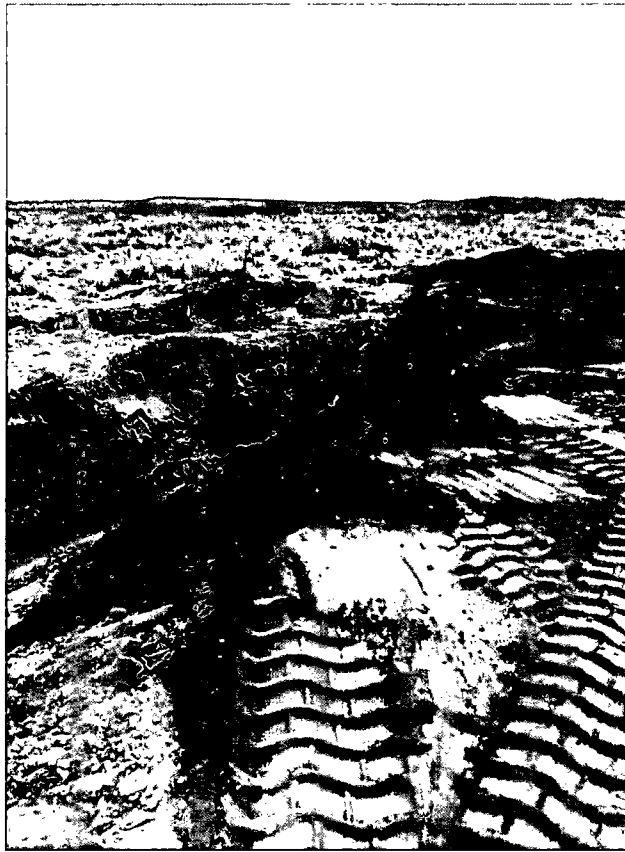
Photograph of Excavation #6 at the PLU #188Y Release Site.



Photograph of the installation of 20-mil liner in Excavation #3 at the PLU #188Y Release Site.



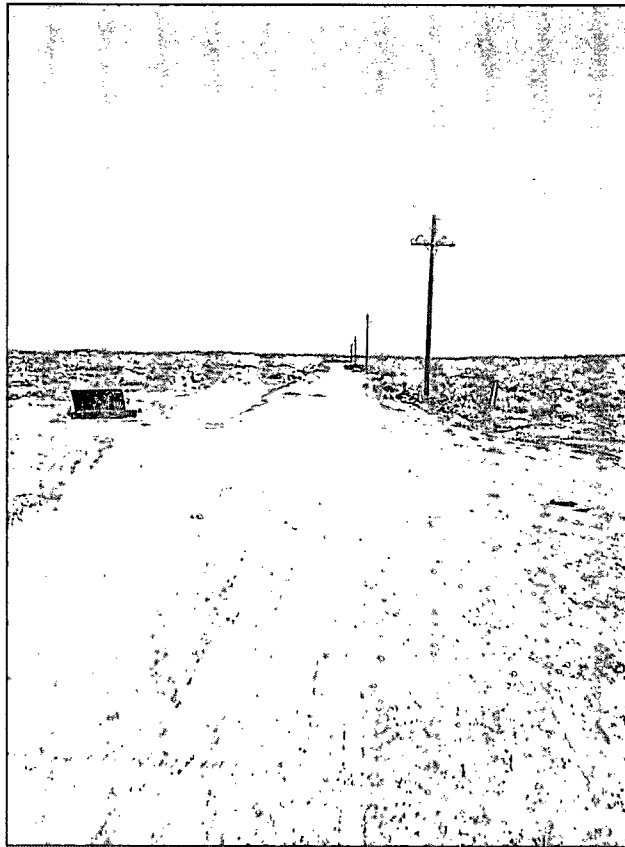
Photograph of backfilling activities at the PLU #188Y Release Site.



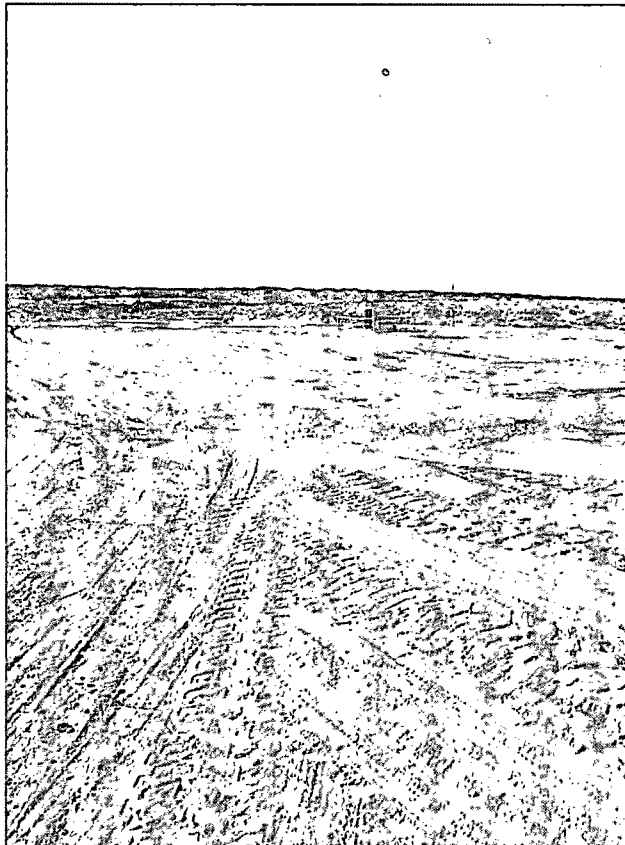
Photograph of backfilling activities at the PLU #188Y Release Site.



Photograph of the PLU #188Y Remediation Site after backfilling activities.



Photograph of the PLU #188Y Remediation Site after backfilling activities.



Photograph of the affected well pad at PLU #188Y Remediation Site after remediation activities.

Appendix C

Laboratory Analytical Reports

January 29, 2014

JOEL LOWRY

Basin Environmental Service

P.O. Box 301

Lovington, NM 88260

RE: PLU #188Y

Enclosed are the results of analyses for samples received by the laboratory on 01/23/14 11:50.

Cardinal Laboratories is accredited through Texas NELAP under certificate number T104704398-13-5. Accreditation applies to drinking water, non-potable water and solid and chemical materials. All accredited analytes are denoted by an asterisk (*). For a complete list of accredited analytes and matrices visit the TCEQ website at www.tceq.texas.gov/field/ga/lab_accred_certif.html.

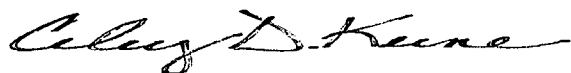
Cardinal Laboratories is accredited through the State of Colorado Department of Public Health and Environment for:

Method EPA 552.2	Haloacetic Acids (HAA-5)
Method EPA 524.2	Total Trihalomethanes (TTHM)
Method EPA 524.4	Regulated VOCs (V1, V2, V3)

Accreditation applies to public drinking water matrices.

This report meets NELAP requirements and is made up of a cover page, analytical results, and a copy of the original chain-of-custody. If you have any questions concerning this report, please feel free to contact me.

Sincerely,



Celey D. Keene

Lab Director/Quality Manager

Analytical Results For:

Basin Environmental Service
JOEL LOWRY
P.O. Box 301
Lovington NM, 88260
Fax To: (575) 396-1429

Received: 01/23/2014
Reported: 01/29/2014
Project Name: PLU #188Y
Project Number: NONE GIVEN
Project Location: EDDY COUNTY, NM

Sampling Date: 01/20/2014
Sampling Type: Soil
Sampling Condition: Cool & Intact
Sample Received By: Jodi Henson

Sample ID: RP N. FLOOR @ 12' (H400215-01)

Chloride, SM4500Cl-B			mg/kg		Analyzed By: AP				
Analyte	Result	Reporting Limit	Analyzed	Method Blank	BS	% Recovery	True Value QC	RPD	Qualifier
Chloride	112	16.0	01/24/2014	ND	416	104	400	0.00	

Sample ID: RP S. FLOOR @ 9' (H400215-02)

BTEX 8021B			mg/kg		Analyzed By: MS				
Analyte	Result	Reporting Limit	Analyzed	Method Blank	BS	% Recovery	True Value QC	RPD	Qualifier
Benzene*	<0.050	0.050	01/27/2014	ND	2.38	119	2.00	2.71	
Toluene*	<0.050	0.050	01/27/2014	ND	2.34	117	2.00	2.39	
Ethylbenzene*	<0.050	0.050	01/27/2014	ND	2.34	117	2.00	2.31	
Total Xylenes*	<0.150	0.150	01/27/2014	ND	6.73	112	6.00	2.76	
Total BTEX	<0.300	0.300	01/27/2014	ND					

Surrogate: 4-Bromofluorobenzene (PIC) 112 % 89.4-126

Chloride, SM4500Cl-B			mg/kg		Analyzed By: AP				
Analyte	Result	Reporting Limit	Analyzed	Method Blank	BS	% Recovery	True Value QC	RPD	Qualifier
Chloride	544	16.0	01/24/2014	ND	416	104	400	0.00	

TPH 8015M			mg/kg		Analyzed By: ms				
Analyte	Result	Reporting Limit	Analyzed	Method Blank	BS	% Recovery	True Value QC	RPD	Qualifier
GRO C6-C10	<10.0	10.0	01/27/2014	ND	185	92.5	200	0.200	
DRO >C10-C28	<10.0	10.0	01/27/2014	ND	177	88.3	200	0.787	
EXT DRO >C28-C35	<10.0	10.0	01/27/2014	ND					

Surrogate: 1-Chlorooctane 90.8 % 65.2-140

Cardinal Laboratories

*=Accredited Analyte

PLEASE NOTE: Liability and Damages. Cardinal's liability and client's exclusive remedy for any claim arising, whether based in contract or tort, shall be limited to the amount paid by client for analyses. All claims, including those for negligence and any other cause whatsoever shall be deemed waived unless made in writing and received by Cardinal within thirty (30) days after completion of the applicable service. In no event shall Cardinal be liable for incidental or consequential damages, including, without limitation, business interruptions, loss of use, or loss of profits incurred by client, its subsidiaries, affiliates or successors arising out of or related to the performance of the services hereunder by Cardinal, regardless of whether such claim is based upon any of the above stated reasons or otherwise. Results relate only to the samples identified above. This report shall not be reproduced except in full with written approval of Cardinal Laboratories.



Celey D. Keene, Lab Director/Quality Manager

Analytical Results For:

Basin Environmental Service
JOEL LOWRY
P.O. Box 301
Lovington NM, 88260
Fax To: (575) 396-1429

Received: 01/23/2014
Reported: 01/29/2014
Project Name: PLU #188Y
Project Number: NONE GIVEN
Project Location: EDDY COUNTY, NM

Sampling Date: 01/20/2014
Sampling Type: Soil
Sampling Condition: Cool & Intact
Sample Received By: Jodi Henson

Sample ID: RP S. FLOOR @ 9' (H400215-02)

TPH 8015M	mg/kg	Analyzed By: ms							
Analyte	Result	Reporting Limit	Analyzed	Method Blank	BS	% Recovery	True Value QC	RPD	Qualifier
Surrogate: 1-Chlorooctadecane	88.2 %	63.6-154							

Sample ID: RP ESW #1 (H400215-03)

Chloride, SM4500Cl-B	mg/kg	Analyzed By: AP							
Analyte	Result	Reporting Limit	Analyzed	Method Blank	BS	% Recovery	True Value QC	RPD	Qualifier
Chloride	560	16.0	01/24/2014	ND	416	104	400	0.00	

Sample ID: RP ESW #2 (H400215-04)

Chloride, SM4500Cl-B	mg/kg	Analyzed By: AP							
Analyte	Result	Reporting Limit	Analyzed	Method Blank	BS	% Recovery	True Value QC	RPD	Qualifier
Chloride	<16.0	16.0	01/24/2014	ND	416	104	400	0.00	

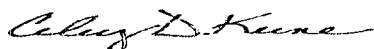
Sample ID: RP NSW (H400215-05)

Chloride, SM4500Cl-B	mg/kg	Analyzed By: AP							
Analyte	Result	Reporting Limit	Analyzed	Method Blank	BS	% Recovery	True Value QC	RPD	Qualifier
Chloride	224	16.0	01/24/2014	ND	416	104	400	0.00	

Cardinal Laboratories

*=Accredited Analyte

PLEASE NOTE: Liability and Damages. Cardinal's liability and client's exclusive remedy for any claim arising, whether based in contract or tort, shall be limited to the amount paid by client for analyses. All claims, including those for negligence and any other cause whatsoever shall be deemed waived unless made in writing and received by Cardinal within thirty (30) days after completion of the applicable service. In no event shall Cardinal be liable for incidental or consequential damages, including, without limitation, business interruptions, loss of use, or loss of profits incurred by client, its subsidiaries, affiliates or successors arising out of or related to the performance of the services hereunder by Cardinal, regardless of whether such claim is based upon any of the above stated reasons or otherwise. Results relate only to the samples identified above. This report shall not be reproduced except in full with written approval of Cardinal Laboratories.



Celey D. Keene, Lab Director/Quality Manager

Analytical Results For:

Basin Environmental Service
JOEL LOWRY
P.O. Box 301
Lovington NM, 88260
Fax To: (575) 396-1429

Received: 01/23/2014
Reported: 01/29/2014
Project Name: PLU #188Y
Project Number: NONE GIVEN
Project Location: EDDY COUNTY, NM

Sampling Date: 01/20/2014
Sampling Type: Soil
Sampling Condition: Cool & Intact
Sample Received By: Jodi Henson

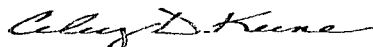
Sample ID: RP WSW #1 (H400215-06)

Chloride, SM4500Cl-B	mg/kg	Analyzed By: AP							
Analyte	Result	Reporting Limit	Analyzed	Method Blank	BS	% Recovery	True Value QC	RPD	Qualifier
Chloride	176	16.0	01/24/2014	ND	416	104	400	0.00	

Cardinal Laboratories

*=Accredited Analyte

PLEASE NOTE: Liability and Damages. Cardinal's liability and client's exclusive remedy for any claim arising, whether based in contract or tort, shall be limited to the amount paid by client for analyses. All claims, including those for negligence and any other cause whatsoever shall be deemed waived unless made in writing and received by Cardinal within thirty (30) days after completion of the applicable service. In no event shall Cardinal be liable for incidental or consequential damages, including, without limitation, business interruptions, loss of use, or loss of profits incurred by client, its subsidiaries, affiliates or successors arising out of or related to the performance of the services hereunder by Cardinal, regardless of whether such claim is based upon any of the above stated reasons or otherwise. Results relate only to the samples identified above. This report shall not be reproduced except in full with written approval of Cardinal Laboratories.



Celey D. Keene, Lab Director/Quality Manager

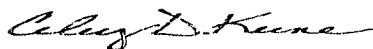
Notes and Definitions

ND	Analyte NOT DETECTED at or above the reporting limit
RPD	Relative Percent Difference
**	Samples not received at proper temperature of 6°C or below.
***	Insufficient time to reach temperature.
-	Chloride by SM4500Cl-B does not require samples be received at or below 6°C Samples reported on an as received basis (wet) unless otherwise noted on report

Cardinal Laboratories

*=Accredited Analyte

PLEASE NOTE: Liability and Damages. Cardinal's liability and client's exclusive remedy for any claim arising, whether based in contract or tort, shall be limited to the amount paid by client for analyses. All claims, including those for negligence and any other cause whatsoever shall be deemed waived unless made in writing and received by Cardinal within thirty (30) days after completion of the applicable service. In no event shall Cardinal be liable for incidental or consequential damages, including, without limitation, business interruptions, loss of use, or loss of profits incurred by client, its subsidiaries, affiliates or successors arising out of or related to the performance of the services hereunder by Cardinal, regardless of whether such claim is based upon any of the above stated reasons or otherwise. Results relate only to the samples identified above. This report shall not be reproduced except in full with written approval of Cardinal Laboratories.



Celey D. Keene, Lab Director/Quality Manager



(575) 393-2326 FAX (575) 393-2476

Page 6 of 6

#54

January 31, 2014

JOEL LOWRY

Basin Environmental Service

P.O. Box 301

Lovington, NM 88260

RE: PLU #188Y

Enclosed are the results of analyses for samples received by the laboratory on 01/27/14 8:50.

Cardinal Laboratories is accredited through Texas NELAP under certificate number T104704398-13-5. Accreditation applies to drinking water, non-potable water and solid and chemical materials. All accredited analytes are denoted by an asterisk (*). For a complete list of accredited analytes and matrices visit the TCEQ website at www.tceq.texas.gov/field/qa/lab_accred_certif.html.


Cardinal Laboratories is accredited through the State of Colorado Department of Public Health and Environment for:

Method EPA 552.2	Haloacetic Acids (HAA-5)
Method EPA 524.2	Total Trihalomethanes (TTHM)
Method EPA 524.4	Regulated VOCs (V1, V2, V3)

Accreditation applies to public drinking water matrices.

This report meets NELAP requirements and is made up of a cover page, analytical results, and a copy of the original chain-of-custody. If you have any questions concerning this report, please feel free to contact me.

Sincerely,



Celey D. Keene

Lab Director/Quality Manager

Analytical Results For:

 Basin Environmental Service
 JOEL LOWRY
 P.O. Box 301
 Lovington NM, 88260
 Fax To: (575) 396-1429

 Received: 01/27/2014
 Reported: 01/31/2014
 Project Name: PLU #188Y
 Project Number: NONE GIVEN
 Project Location: EDDY COUNTY, NM

 Sampling Date: 01/24/2014
 Sampling Type: Soil
 Sampling Condition: Cool & Intact
 Sample Received By: Jodi Henson

Sample ID: EXC. #1 WSW (H400243-01)

Chloride, SM4500CI-B		mg/kg	Analyzed By: AP						
Analyte	Result	Reporting Limit	Analyzed	Method Blank	BS	% Recovery	True Value QC	RPD	Qualifier
Chloride	<16.0	16.0	01/29/2014	ND	416	104	400	0.00	

Sample ID: EXC. #1 FLOOR #2 (H400243-02)

Chloride, SM4500CI-B		mg/kg	Analyzed By: AP						
Analyte	Result	Reporting Limit	Analyzed	Method Blank	BS	% Recovery	True Value QC	RPD	Qualifier
Chloride	96.0	16.0	01/29/2014	ND	416	104	400	0.00	

Sample ID: EXC. #2 ESW (H400243-03)

Chloride, SM4500CI-B		mg/kg	Analyzed By: AP						
Analyte	Result	Reporting Limit	Analyzed	Method Blank	BS	% Recovery	True Value QC	RPD	Qualifier
Chloride	<16.0	16.0	01/29/2014	ND	416	104	400	0.00	

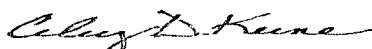
Sample ID: EXC. #2 SSW (H400243-04)

Chloride, SM4500CI-B		mg/kg	Analyzed By: AP						
Analyte	Result	Reporting Limit	Analyzed	Method Blank	BS	% Recovery	True Value QC	RPD	Qualifier
Chloride	<16.0	16.0	01/29/2014	ND	416	104	400	0.00	

Cardinal Laboratories

* = Accredited Analyte

PLEASE NOTE: Liability and Damages. Cardinal's liability and client's exclusive remedy for any claim arising, whether based in contract or tort, shall be limited to the amount paid by client for analyses. All claims, including those for negligence and any other cause whatsoever shall be deemed waived unless made in writing and received by Cardinal within thirty (30) days after completion of the applicable service. In no event shall Cardinal be liable for incidental or consequential damages, including, without limitation, business interruptions, loss of use, or loss of profits incurred by client, its subsidiaries, affiliates or successors arising out of or related to the performance of the services hereunder by Cardinal, regardless of whether such claim is based upon any of the above stated reasons or otherwise. Results relate only to the samples identified above. This report shall not be reproduced except in full with written approval of Cardinal Laboratories.



Celey D. Keene, Lab Director/Quality Manager

Analytical Results For:

 Basin Environmental Service
 JOEL LOWRY
 P.O. Box 301
 Lovington NM, 88260
 Fax To: (575) 396-1429

 Received: 01/27/2014
 Reported: 01/31/2014
 Project Name: PLU #188Y
 Project Number: NONE GIVEN
 Project Location: EDDY COUNTY, NM

 Sampling Date: 01/24/2014
 Sampling Type: Soil
 Sampling Condition: Cool & Intact
 Sample Received By: Jodi Henson

Sample ID: EXC. #2 FLOOR #1 (H400243-05)

BTEX 8021B		mg/kg		Analyzed By: MS					
Analyte	Result	Reporting Limit	Analyzed	Method Blank	BS	% Recovery	True Value QC	RPD	Qualifier
Benzene*	<0.050	0.050	01/29/2014	ND	2.44	122	2.00	0.161	
Toluene*	<0.050	0.050	01/29/2014	ND	2.37	119	2.00	0.245	
Ethylbenzene*	<0.050	0.050	01/29/2014	ND	2.36	118	2.00	0.0847	
Total Xylenes*	<0.150	0.150	01/29/2014	ND	6.86	114	6.00	0.152	
Total BTEX	<0.300	0.300	01/29/2014	ND					

Surrogate: 4-Bromofluorobenzene (PIC) 110 % 89.4-126

Chloride, SM4500Cl-B		mg/kg		Analyzed By: AP					
Analyte	Result	Reporting Limit	Analyzed	Method Blank	BS	% Recovery	True Value QC	RPD	Qualifier
Chloride	688	16.0	01/29/2014	ND	416	104	400	0.00	

TPH 8015M		mg/kg		Analyzed By: ms					
Analyte	Result	Reporting Limit	Analyzed	Method Blank	BS	% Recovery	True Value QC	RPD	Qualifier
GRO C6-C10	<10.0	10.0	01/31/2014	ND	203	101	200	1.95	
DRO >C10-C28	<10.0	10.0	01/31/2014	ND	195	97.4	200	1.09	
EXT DRO >C28-C35	<10.0	10.0	01/31/2014	ND					

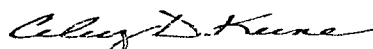
Surrogate: 1-Chlorooctane 76.3 % 65.2-140

Surrogate: 1-Chlorooctadecane 89.9 % 63.6-154

Cardinal Laboratories

*=Accredited Analyte

PLEASE NOTE: Liability and Damages. Cardinal's liability and client's exclusive remedy for any claim arising, whether based in contract or tort, shall be limited to the amount paid by client for analyses. All claims, including those for negligence and any other cause whatsoever shall be deemed waived unless made in writing and received by Cardinal within thirty (30) days after completion of the applicable service. In no event shall Cardinal be liable for incidental or consequential damages, including, without limitation, business interruptions, loss of use, or loss of profits incurred by client, its subsidiaries, affiliates or successors arising out of or related to the performance of the services hereunder by Cardinal, regardless of whether such claim is based upon any of the above stated reasons or otherwise. Results relate only to the samples identified above. This report shall not be reproduced except in full with written approval of Cardinal Laboratories.



Celey D. Keene, Lab Director/Quality Manager

Analytical Results For:

Basin Environmental Service
JOEL LOWRY
P.O. Box 301
Lovington NM, 88260
Fax To: (575) 396-1429

Received: 01/27/2014
Reported: 01/31/2014
Project Name: PLU #188Y
Project Number: NONE GIVEN
Project Location: EDDY COUNTY, NM

Sampling Date: 01/24/2014
Sampling Type: Soil
Sampling Condition: Cool & Intact
Sample Received By: Jodi Henson

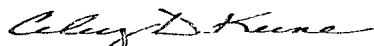
Sample ID: EXC. #2 FLOOR #2 (H400243-06)

Chloride, SM4500Cl-B		mg/kg		Analyzed By: AP						
Analyte	Result	Reporting Limit	Analyzed	Method Blank	BS	% Recovery	True Value QC	RPD	Qualifier	
Chloride	<16.0	16.0	01/29/2014	ND	416	104	400	0.00		

Cardinal Laboratories

*=Accredited Analyte

PLEASE NOTE: Liability and Damages. Cardinal's liability and client's exclusive remedy for any claim arising, whether based in contract or tort, shall be limited to the amount paid by client for analyses. All claims, including those for negligence and any other cause whatsoever shall be deemed waived unless made in writing and received by Cardinal within thirty (30) days after completion of the applicable service. In no event shall Cardinal be liable for incidental or consequential damages, including, without limitation, business interruptions, loss of use, or loss of profits incurred by client, its subsidiaries, affiliates or successors arising out of or related to the performance of the services hereunder by Cardinal, regardless of whether such claim is based upon any of the above stated reasons or otherwise. Results relate only to the samples identified above. This report shall not be reproduced except in full with written approval of Cardinal Laboratories.



Celey D. Keene, Lab Director/Quality Manager

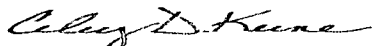
Notes and Definitions

ND	Analyte NOT DETECTED at or above the reporting limit
RPD	Relative Percent Difference
**	Samples not received at proper temperature of 6°C or below.
***	Insufficient time to reach temperature.
-	Chloride by SM4500Cl-B does not require samples be received at or below 6°C
	Samples reported on an as received basis (wet) unless otherwise noted on report

Cardinal Laboratories

*=Accredited Analyte

PLEASE NOTE: Liability and Damages. Cardinal's liability and client's exclusive remedy for any claim arising, whether based in contract or tort, shall be limited to the amount paid by client for analyses. All claims, including those for negligence and any other cause whatsoever shall be deemed waived unless made in writing and received by Cardinal within thirty (30) days after completion of the applicable service. In no event shall Cardinal be liable for incidental or consequential damages, including, without limitation, business interruptions, loss of use, or loss of profits incurred by client, its subsidiaries, affiliates or successors arising out of or related to the performance of the services hereunder by Cardinal, regardless of whether such claim is based upon any of the above stated reasons or otherwise. Results relate only to the samples identified above. This report shall not be reproduced except in full with written approval of Cardinal Laboratories.



Celey D. Keene, Lab Director/Quality Manager

ARDINAL LABORATORIES

101 East Marland, Hobbs, NM 88240

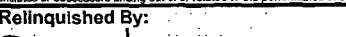
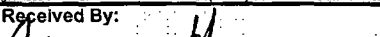

(575) 393-2326 FAX (575) 393-2476

CHAIN-OF-CUSTODY AND ANALYSIS REQUEST

Page 6 of 6

[illegible]

PLEASE NOTE: Liability and Damages. Cardinal's liability and client's exclusive remedy for any claim arising whether based in contract or tort, shall be limited to the amount paid by the client for the analyses. All claims, including those for negligence and any other cause whatsoever shall be deemed waived unless made in writing and received by Cardinal within 30 days after completion of the applicable service. In no event shall Cardinal be liable for incidental or consequential damages, including without limitation, business interruptions, loss of use, or loss of profits incurred by client, its subsidiaries, affiliates or successors arising out of or related to the performance of services hereunder by Cardinal, regardless of whether such claim is based upon any of the above stated reasons or otherwise.

Relinquished By: 		Date: 1/27/14	Received By: 	Phone Result: <input type="checkbox"/> Yes <input type="checkbox"/> No	Add'l Phone #: _____
Time: 8:50				Fax Result: <input type="checkbox"/> Yes <input type="checkbox"/> No	Add'l Fax #: _____
Relinquished By: _____		Date: _____	Received By: _____	REMARKS: _____	
Time: _____					
Delivered By: (Circle One)			Sample Condition	CHECKED BY: 	
Sampler - UPS - Bus - Other: FORM-006			Cool Intact <input type="checkbox"/> Yes <input checked="" type="checkbox"/> No <input type="checkbox"/> Yes <input checked="" type="checkbox"/> No	Please email results to pm@basinenv.com, TASavole@BassPet.com & SJWalters@BassPet.com	
1.20					

Revision 1.0

† Cardinal cannot accept verbal changes. Please fax written changes to 575-393-2476

#54



PHONE (575) 393-2326 ° 101 E. MARLAND ° HOBBS, NM 88240

February 07, 2014

JOEL LOWRY

Basin Environmental Service

P.O. Box 301

Lovington, NM 88260

RE: PLU #188Y

Enclosed are the results of analyses for samples received by the laboratory on 01/30/14 12:20.

Cardinal Laboratories is accredited through Texas NELAP under certificate number T104704398-13-5. Accreditation applies to drinking water, non-potable water and solid and chemical materials. All accredited analytes are denoted by an asterisk (*). For a complete list of accredited analytes and matrices visit the TCEQ website at www.tceq.texas.gov/field/qa/lab_accred_certif.html.

Cardinal Laboratories is accredited through the State of Colorado Department of Public Health and Environment for:

Method EPA 552.2	Haloacetic Acids (HAA-5)
Method EPA 524.2	Total Trihalomethanes (TTHM)
Method EPA 524.4	Regulated VOCs (V1, V2, V3)

Accreditation applies to public drinking water matrices.

This report meets NELAP requirements and is made up of a cover page, analytical results, and a copy of the original chain-of-custody. If you have any questions concerning this report, please feel free to contact me.

Sincerely,

A handwritten signature in black ink, reading "Celey D. Keene". The signature is written in a cursive, flowing style.

Celey D. Keene

Lab Director/Quality Manager

Analytical Results For:

 Basin Environmental Service
 JOEL LOWRY
 P.O. Box 301
 Lovington NM, 88260
 Fax To: (575) 396-1429

 Received: 01/30/2014
 Reported: 02/07/2014
 Project Name: PLU #188Y
 Project Number: NONE GIVEN
 Project Location: EDDY COUNTY, NM

 Sampling Date: 01/28/2014
 Sampling Type: Soil
 Sampling Condition: Cool & Intact
 Sample Received By: Jodi Henson

Sample ID: EXC. 3 TT @ 8' (H400303-01)

BTEX 8021B			mg/kg		Analyzed By: MS				
Analyte	Result	Reporting Limit	Analyzed	Method Blank	BS	% Recovery	True Value QC	RPD	Qualifier
Benzene*	<0.050	0.050	02/05/2014	ND	2.54	127	2.00	0.915	
Toluene*	<0.050	0.050	02/05/2014	ND	2.49	125	2.00	0.516	
Ethylbenzene*	<0.050	0.050	02/05/2014	ND	2.49	124	2.00	0.462	
Total Xylenes*	<0.150	0.150	02/05/2014	ND	7.18	120	6.00	0.427	
Total BTEX	<0.300	0.300	02/05/2014	ND					

Surrogate: 4-Bromofluorobenzene (PIC) 114 % 89.4-126

Chloride, SM4500Cl-B			mg/kg		Analyzed By: AP				
Analyte	Result	Reporting Limit	Analyzed	Method Blank	BS	% Recovery	True Value QC	RPD	Qualifier
Chloride	10900	16.0	01/31/2014	ND	400	100	400	3.92	

TPH 8015M			mg/kg		Analyzed By: ms				
Analyte	Result	Reporting Limit	Analyzed	Method Blank	BS	% Recovery	True Value QC	RPD	Qualifier
GRO C6-C10	<10.0	10.0	02/01/2014	ND	214	107	200	2.00	
DRO >C10-C28	<10.0	10.0	02/01/2014	ND	214	107	200	2.09	
EXT DRO >C28-C35	<10.0	10.0	02/01/2014	ND					

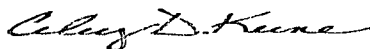
Surrogate: 1-Chlorooctane 88.6 % 65.2-140

Surrogate: 1-Chlorooctadecane 95.7 % 63.6-154

Cardinal Laboratories

*=Accredited Analyte

PLEASE NOTE: Liability and Damages. Cardinal's liability and client's exclusive remedy for any claim arising, whether based in contract or tort, shall be limited to the amount paid by client for analyses. All claims, including those for negligence and any other cause whatsoever shall be deemed waived unless made in writing and received by Cardinal within thirty (30) days after completion of the applicable service. In no event shall Cardinal be liable for incidental or consequential damages, including, without limitation, business interruptions, loss of use, or loss of profits incurred by client, its subsidiaries, affiliates or successors arising out of or related to the performance of the services hereunder by Cardinal, regardless of whether such claim is based upon any of the above stated reasons or otherwise. Results relate only to the samples identified above. This report shall not be reproduced except in full with written approval of Cardinal Laboratories.



Celey D. Keene, Lab Director/Quality Manager

Analytical Results For:

 Basin Environmental Service
 JOEL LOWRY
 P.O. Box 301
 Lovington NM, 88260
 Fax To: (575) 396-1429

 Received: 01/30/2014
 Reported: 02/07/2014
 Project Name: PLU #188Y
 Project Number: NONE GIVEN
 Project Location: EDDY COUNTY, NM

 Sampling Date: 01/28/2014
 Sampling Type: Soil
 Sampling Condition: Cool & Intact
 Sample Received By: Jodi Henson

Sample ID: EXC. 3 TT @ 12' (H400303-02)

Chloride, SM4500CI-B		mg/kg		Analyzed By: AP					
Analyte	Result	Reporting Limit	Analyzed	Method Blank	BS	% Recovery	True Value QC	RPD	Qualifier
Chloride	17000	16.0	01/31/2014	ND	400	100	400	3.92	

Sample ID: EXC. 3 TT @ 16' (H400303-03)

Chloride, SM4500CI-B		mg/kg		Analyzed By: AP					
Analyte	Result	Reporting Limit	Analyzed	Method Blank	BS	% Recovery	True Value QC	RPD	Qualifier
Chloride	2200	16.0	01/31/2014	ND	400	100	400	3.92	

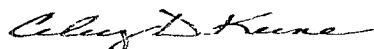
Sample ID: EXC. 3 TT @ 18' (H400303-04)

Chloride, SM4500CI-B		mg/kg		Analyzed By: AP					
Analyte	Result	Reporting Limit	Analyzed	Method Blank	BS	% Recovery	True Value QC	RPD	Qualifier
Chloride	96.0	16.0	01/31/2014	ND	400	100	400	3.92	

Cardinal Laboratories

*=Accredited Analyte

PLEASE NOTE: Liability and Damages. Cardinal's liability and client's exclusive remedy for any claim arising, whether based in contract or tort, shall be limited to the amount paid by client for analyses. All claims, including those for negligence and any other cause whatsoever shall be deemed waived unless made in writing and received by Cardinal within thirty (30) days after completion of the applicable service. In no event shall Cardinal be liable for incidental or consequential damages, including, without limitation, business interruptions, loss of use, or loss of profits incurred by client, its subsidiaries, affiliates or successors arising out of or related to the performance of the services hereunder by Cardinal, regardless of whether such claim is based upon any of the above stated reasons or otherwise. Results relate only to the samples identified above. This report shall not be reproduced except in full with written approval of Cardinal Laboratories.



Celey D. Keene, Lab Director/Quality Manager

Analytical Results For:

 Basin Environmental Service
 JOEL LOWRY
 P.O. Box 301
 Lovington NM, 88260
 Fax To: (575) 396-1429

 Received: 01/30/2014
 Reported: 02/07/2014
 Project Name: PLU #188Y
 Project Number: NONE GIVEN
 Project Location: EDDY COUNTY, NM

 Sampling Date: 01/28/2014
 Sampling Type: Soil
 Sampling Condition: Cool & Intact
 Sample Received By: Jodi Henson

Sample ID: EXC. 4 TT @ 4' (H400303-05)

BTX 8021B			mg/kg		Analyzed By: MS				
Analyte	Result	Reporting Limit	Analyzed	Method Blank	BS	% Recovery	True Value QC	RPD	Qualifier
Benzene*	<0.050	0.050	02/05/2014	ND	2.54	127	2.00	0.915	
Toluene*	<0.050	0.050	02/05/2014	ND	2.49	125	2.00	0.516	
Ethylbenzene*	<0.050	0.050	02/05/2014	ND	2.49	124	2.00	0.462	
Total Xylenes*	<0.150	0.150	02/05/2014	ND	7.18	120	6.00	0.427	
Total BTX	<0.300	0.300	02/05/2014	ND					

Surrogate: 4-Bromofluorobenzene (PIC) 113 % 89.4-126

Chloride, SM4500Cl-B			mg/kg		Analyzed By: AP				
Analyte	Result	Reporting Limit	Analyzed	Method Blank	BS	% Recovery	True Value QC	RPD	Qualifier
Chloride	3280	16.0	01/31/2014	ND	400	100	400	3.92	

TPH 8015M			mg/kg		Analyzed By: ms				
Analyte	Result	Reporting Limit	Analyzed	Method Blank	BS	% Recovery	True Value QC	RPD	Qualifier
GRO C6-C10	<10.0	10.0	02/01/2014	ND	214	107	200	2.00	
DRO >C10-C28	<10.0	10.0	02/01/2014	ND	214	107	200	2.09	
EXT DRO >C28-C35	<10.0	10.0	02/01/2014	ND					

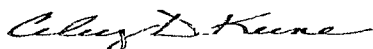
Surrogate: 1-Chlorooctane 91.4 % 65.2-140

Surrogate: 1-Chlorooctadecane 98.3 % 63.6-154

Cardinal Laboratories

* = Accredited Analyte

PLEASE NOTE: Liability and Damages. Cardinal's liability and client's exclusive remedy for any claim arising, whether based in contract or tort, shall be limited to the amount paid by client for analyses. All claims, including those for negligence and any other cause whatsoever shall be deemed waived unless made in writing and received by Cardinal within thirty (30) days after completion of the applicable service. In no event shall Cardinal be liable for incidental or consequential damages, including, without limitation, business interruptions, loss of use, or loss of profits incurred by client, its subsidiaries, affiliates or successors arising out of or related to the performance of the services hereunder by Cardinal, regardless of whether such claim is based upon any of the above stated reasons or otherwise. Results relate only to the samples identified above. This report shall not be reproduced except in full with written approval of Cardinal Laboratories.



Celey D. Keene, Lab Director/Quality Manager

Analytical Results For:

Basin Environmental Service
JOEL LOWRY
P.O. Box 301
Lovington NM, 88260
Fax To: (575) 396-1429

Received: 01/30/2014
Reported: 02/07/2014
Project Name: PLU #188Y
Project Number: NONE GIVEN
Project Location: EDDY COUNTY, NM

Sampling Date: 01/28/2014
Sampling Type: Soil
Sampling Condition: Cool & Intact
Sample Received By: Jodi Henson

Sample ID: EXC. 4 TT @ 8' (H400303-06)

Chloride, SM4500Cl-B		mg/kg	Analyzed By: AP						
Analyte	Result	Reporting Limit	Analyzed	Method Blank	BS	% Recovery	True Value QC	RPD	Qualifier
Chloride	6000	16.0	01/31/2014	ND	400	100	400	3.92	

Sample ID: EXC. 4 TT @ 12' (H400303-07)

Chloride, SM4500Cl-B		mg/kg	Analyzed By: AP						
Analyte	Result	Reporting Limit	Analyzed	Method Blank	BS	% Recovery	True Value QC	RPD	Qualifier
Chloride	1760	16.0	01/31/2014	ND	400	100	400	3.92	

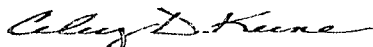
Sample ID: EXC. 4 TT @ 18' (H400303-08)

Chloride, SM4500Cl-B		mg/kg	Analyzed By: AP						
Analyte	Result	Reporting Limit	Analyzed	Method Blank	BS	% Recovery	True Value QC	RPD	Qualifier
Chloride	928	16.0	01/31/2014	ND	400	100	400	3.92	

Cardinal Laboratories

* = Accredited Analyte

PLEASE NOTE: Liability and Damages. Cardinal's liability and client's exclusive remedy for any claim arising, whether based in contract or tort, shall be limited to the amount paid by client for analyses. All claims, including those for negligence and any other cause whatsoever shall be deemed waived unless made in writing and received by Cardinal within thirty (30) days after completion of the applicable service. In no event shall Cardinal be liable for incidental or consequential damages, including, without limitation, business interruptions, loss of use, or loss of profits incurred by client, its subsidiaries, affiliates or successors arising out of or related to the performance of the services hereunder by Cardinal, regardless of whether such claim is based upon any of the above stated reasons or otherwise. Results relate only to the samples identified above. This report shall not be reproduced except in full with written approval of Cardinal Laboratories.



Celey D. Keene, Lab Director/Quality Manager

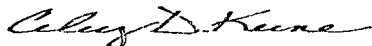
Notes and Definitions

ND	Analyte NOT DETECTED at or above the reporting limit
RPD	Relative Percent Difference
**	Samples not received at proper temperature of 6°C or below.
***	Insufficient time to reach temperature.
-	Chloride by SM4500Cl-B does not require samples be received at or below 6°C Samples reported on an as received basis (wet) unless otherwise noted on report

Cardinal Laboratories

*=Accredited Analyte

PLEASE NOTE: Liability and Damages. Cardinal's liability and client's exclusive remedy for any claim arising, whether based in contract or tort, shall be limited to the amount paid by client for analyses. All claims, including those for negligence and any other cause whatsoever shall be deemed waived unless made in writing and received by Cardinal within thirty (30) days after completion of the applicable service. In no event shall Cardinal be liable for incidental or consequential damages, including, without limitation, business interruptions, loss of use, or loss of profits incurred by client, its subsidiaries, affiliates or successors arising out of or related to the performance of the services hereunder by Cardinal, regardless of whether such claim is based upon any of the above stated reasons or otherwise. Results relate only to the samples identified above. This report shall not be reproduced except in full with written approval of Cardinal Laboratories.



Celey D. Keene, Lab Director/Quality Manager



(575) 393-2326 FAX (575) 393-2476

Page 7 of 7

PLEASE NOTE: Liability and Damages. Cardinal's liability and client's exclusive remedy for any claim arising whether based in contract or tort, shall be limited to the amount paid by the client for the analyses. All claims, including those for negligence and any other cause whatsoever shall be deemed waived unless made in writing and received by Cardinal within 30 days after completion of the applicable service. In no event shall Cardinal be liable for incidental or consequential damages, including without limitation, business interruptions, loss of use, or loss of profits incurred by client, its subsidiaries, affiliates or successors arising out of or related to the performance of services hereunder by Cardinal, regardless of whether such claim is based upon any of the above stated reasons or otherwise.

† Cardinal cannot accept verbal changes. Please fax written changes to 575-393-2476

February 07, 2014

JOEL LOWRY

Basin Environmental Service

P.O. Box 301

Lovington, NM 88260

RE: PLU #188Y

Enclosed are the results of analyses for samples received by the laboratory on 01/30/14 12:20.

Cardinal Laboratories is accredited through Texas NELAP under certificate number T104704398-13-5. Accreditation applies to drinking water, non-potable water and solid and chemical materials. All accredited analytes are denoted by an asterisk (*). For a complete list of accredited analytes and matrices visit the TCEQ website at www.tceq.texas.gov/field/qa/lab_accred_certif.html.

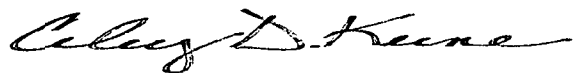
Cardinal Laboratories is accredited through the State of Colorado Department of Public Health and Environment for:

Method EPA 552.2	Haloacetic Acids (HAA-5)
Method EPA 524.2	Total Trihalomethanes (TTHM)
Method EPA 524.4	Regulated VOCs (V1, V2, V3)

Accreditation applies to public drinking water matrices.

This report meets NELAP requirements and is made up of a cover page, analytical results, and a copy of the original chain-of-custody. If you have any questions concerning this report, please feel free to contact me.

Sincerely,



Celey D. Keene

Lab Director/Quality Manager

Analytical Results For:

 Basin Environmental Service
 JOEL LOWRY
 P.O. Box 301
 Lovington NM, 88260
 Fax To: (575) 396-1429

 Received: 01/30/2014
 Reported: 02/07/2014
 Project Name: PLU #188Y
 Project Number: NONE GIVEN
 Project Location: EDDY COUNTY, NM

 Sampling Date: 01/29/2014
 Sampling Type: Soil
 Sampling Condition: Cool & Intact
 Sample Received By: Jodi Henson

Sample ID: EXC. 4B NSW (H400302-01)

Chloride, SM4500Cl-B		mg/kg		Analyzed By: AP					
Analyte	Result	Reporting Limit	Analyzed	Method Blank	BS	% Recovery	True Value QC	RPD	Qualifier
Chloride	272	16.0	01/31/2014	ND	400	100	400	3.92	

Sample ID: EXC. 4B WSW (H400302-02)

Chloride, SM4500Cl-B		mg/kg		Analyzed By: AP						
Analyte	Result	Reporting Limit	Analyzed	Method Blank	BS	% Recovery	True Value QC	RPD	Qualifier	
Chloride	320	16.0	01/31/2014	ND	400	100	400	3.92		

Sample ID: EXC. 4C NSW (H400302-03)

Chloride, SM4500Cl-B		mg/kg		Analyzed By: AP						
Analyte	Result	Reporting Limit	Analyzed	Method Blank	BS	% Recovery	True Value QC	RPD	Qualifier	
Chloride	<16.0	16.0	01/31/2014	ND	400	100	400	3.92		

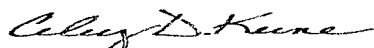
Sample ID: EXC. 4C ESW (H400302-04)

Chloride, SM4500Cl-B		mg/kg		Analyzed By: AP						
Analyte	Result	Reporting Limit	Analyzed	Method Blank	BS	% Recovery	True Value QC	RPD	Qualifier	
Chloride	<16.0	16.0	01/31/2014	ND	400	100	400	3.92		

Cardinal Laboratories

*=Accredited Analyte

PLEASE NOTE: Liability and Damages. Cardinal's liability and client's exclusive remedy for any claim arising, whether based in contract or tort, shall be limited to the amount paid by client for analyses. All claims, including those for negligence and any other cause whatsoever shall be deemed waived unless made in writing and received by Cardinal within thirty (30) days after completion of the applicable service. In no event shall Cardinal be liable for incidental or consequential damages, including, without limitation, business interruptions, loss of use, or loss of profits incurred by client, its subsidiaries, affiliates or successors arising out of or related to the performance of the services hereunder by Cardinal, regardless of whether such claim is based upon any of the above stated reasons or otherwise. Results relate only to the samples identified above. This report shall not be reproduced except in full with written approval of Cardinal Laboratories.



Celey D. Keene, Lab Director/Quality Manager

Analytical Results For:

 Basin Environmental Service
 JOEL LOWRY
 P.O. Box 301
 Lovington NM, 88260
 Fax To: (575) 396-1429

 Received: 01/30/2014
 Reported: 02/07/2014
 Project Name: PLU #188Y
 Project Number: NONE GIVEN
 Project Location: EDDY COUNTY, NM

 Sampling Date: 01/29/2014
 Sampling Type: Soil
 Sampling Condition: Cool & Intact
 Sample Received By: Jodi Henson

Sample ID: EXC. 4 ESW (H400302-05)

Chloride, SM4500Cl-B	mg/kg	Analyzed By: AP							
Analyte	Result	Reporting Limit	Analyzed	Method Blank	BS	% Recovery	True Value QC	RPD	Qualifier
Chloride	<16.0	16.0	01/31/2014	ND	400	100	400	3.92	

Sample ID: EXC. 3 NSW (H400302-06)

Chloride, SM4500Cl-B	mg/kg	Analyzed By: AP							
Analyte	Result	Reporting Limit	Analyzed	Method Blank	BS	% Recovery	True Value QC	RPD	Qualifier
Chloride	<16.0	16.0	01/31/2014	ND	400	100	400	3.92	

Sample ID: EXC. 3 ESW (H400302-07)

Chloride, SM4500Cl-B	mg/kg	Analyzed By: AP							
Analyte	Result	Reporting Limit	Analyzed	Method Blank	BS	% Recovery	True Value QC	RPD	Qualifier
Chloride	<16.0	16.0	01/31/2014	ND	400	100	400	3.92	

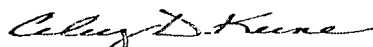
Sample ID: EXC. E SSW #1 (H400302-08)

Chloride, SM4500Cl-B	mg/kg	Analyzed By: AP							
Analyte	Result	Reporting Limit	Analyzed	Method Blank	BS	% Recovery	True Value QC	RPD	Qualifier
Chloride	<16.0	16.0	01/31/2014	ND	400	100	400	3.92	

Cardinal Laboratories

*=Accredited Analyte

PLEASE NOTE: Liability and Damages. Cardinal's liability and client's exclusive remedy for any claim arising, whether based in contract or tort, shall be limited to the amount paid by client for analyses. All claims, including those for negligence and any other cause whatsoever shall be deemed waived unless made in writing and received by Cardinal within thirty (30) days after completion of the applicable service. In no event shall Cardinal be liable for incidental or consequential damages, including, without limitation, business interruptions, loss of use, or loss of profits incurred by client, its subsidiaries, affiliates or successors arising out of or related to the performance of the services hereunder by Cardinal, regardless of whether such claim is based upon any of the above stated reasons or otherwise. Results relate only to the samples identified above. This report shall not be reproduced except in full with written approval of Cardinal Laboratories.



Celey D. Keene, Lab Director/Quality Manager

Analytical Results For:

Basin Environmental Service
JOEL LOWRY
P.O. Box 301
Lovington NM, 88260
Fax To: (575) 396-1429

Received: 01/30/2014
Reported: 02/07/2014
Project Name: PLU #188Y
Project Number: NONE GIVEN
Project Location: EDDY COUNTY, NM

Sampling Date: 01/29/2014
Sampling Type: Soil
Sampling Condition: Cool & Intact
Sample Received By: Jodi Henson

Sample ID: EXC. 3 EAST FLOOR (H400302-09)

BTX 8021B		mg/kg		Analyzed By: MS					
Analyte	Result	Reporting Limit	Analyzed	Method Blank	BS	% Recovery	True Value QC	RPD	Qualifier
Benzene*	<0.050	0.050	02/05/2014	ND	2.54	127	2.00	0.915	
Toluene*	<0.050	0.050	02/05/2014	ND	2.49	125	2.00	0.516	
Ethylbenzene*	<0.050	0.050	02/05/2014	ND	2.49	124	2.00	0.462	
Total Xylenes*	<0.150	0.150	02/05/2014	ND	7.18	120	6.00	0.427	
Total BTX	<0.300	0.300	02/05/2014	ND					

Surrogate: 4-Bromofluorobenzene (PIC) 115 % 89.4-126

Chloride, SM4500Cl-B		mg/kg		Analyzed By: AP					
Analyte	Result	Reporting Limit	Analyzed	Method Blank	BS	% Recovery	True Value QC	RPD	Qualifier
Chloride	48.0	16.0	01/31/2014	ND	400	100	400	3.92	

TPH 8015M		mg/kg		Analyzed By: ms					
Analyte	Result	Reporting Limit	Analyzed	Method Blank	BS	% Recovery	True Value QC	RPD	Qualifier
GRO C6-C10	<10.0	10.0	02/01/2014	ND	214	107	200	2.00	
DRO >C10-C28	<10.0	10.0	02/01/2014	ND	214	107	200	2.09	
EXT DRO >C28-C35	<10.0	10.0	02/01/2014	ND					

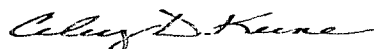
Surrogate: 1-Chlorooctane 85.8 % 65.2-140

Surrogate: 1-Chlorooctadecane 81.6 % 63.6-154

Cardinal Laboratories

*=Accredited Analyte

PLEASE NOTE: Liability and Damages. Cardinal's liability and client's exclusive remedy for any claim arising, whether based in contract or tort, shall be limited to the amount paid by client for analyses. All claims, including those for negligence and any other cause whatsoever shall be deemed waived unless made in writing and received by Cardinal within thirty (30) days after completion of the applicable service. In no event shall Cardinal be liable for incidental or consequential damages, including, without limitation, business interruptions, loss of use, or loss of profits incurred by client, its subsidiaries, affiliates or successors arising out of or related to the performance of the services hereunder by Cardinal, regardless of whether such claim is based upon any of the above stated reasons or otherwise. Results relate only to the samples identified above. This report shall not be reproduced except in full with written approval of Cardinal Laboratories.



Celey D. Keene, Lab Director/Quality Manager

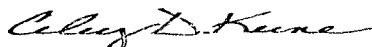
Notes and Definitions

ND	Analyte NOT DETECTED at or above the reporting limit
RPD	Relative Percent Difference
**	Samples not received at proper temperature of 6°C or below.
***	Insufficient time to reach temperature.
-	Chloride by SM4500Cl-B does not require samples be received at or below 6°C Samples reported on an as received basis (wet) unless otherwise noted on report

Cardinal Laboratories

*=Accredited Analyte

PLEASE NOTE: Liability and Damages. Cardinal's liability and client's exclusive remedy for any claim arising, whether based in contract or tort, shall be limited to the amount paid by client for analyses. All claims, including those for negligence and any other cause whatsoever shall be deemed waived unless made in writing and received by Cardinal within thirty (30) days after completion of the applicable service. In no event shall Cardinal be liable for incidental or consequential damages, including, without limitation, business interruptions, loss of use, or loss of profits incurred by client, its subsidiaries, affiliates or successors arising out of or related to the performance of the services hereunder by Cardinal, regardless of whether such claim is based upon any of the above stated reasons or otherwise. Results relate only to the samples identified above. This report shall not be reproduced except in full with written approval of Cardinal Laboratories.



Celey D. Keene, Lab Director/Quality Manager

**CARDINAL LABORATORIES**

101 East Marland, Hobbs, NM 88240

(575) 393-2326 FAX (575) 393-2476

CHAIN-OF-CUSTODY AND ANALYSIS REQUEST

Page 6 of 6

Company Name: Basin Environmental Service Technologies, LLC				BILL TO				ANALYSIS REQUEST																																			
Project Manager: Joel Lowry				P.O. #:				<div style="display: flex; justify-content: space-around;"> <div>Chloride</div> <div>TPH (8015M)</div> <div>BTEX (8021B)</div> </div>																																			
Address: P.O. Box 301				Company: BOPCO, LP																																							
City: Lovington		State: NM		Zip: 88260		Attn: Tony Savoie																																					
Phone #: (575)396-2378		Fax #: (575)396-1429		Address: 522 W. Marland		City: Carlsbad																																					
Project #:		Project Owner:		State: NM		Zip: 88220																																					
Project Name: PLU #188 Y				Phone #: (432)556-8730																																							
Project Location: Eddy Co., NM				Fax #:																																							
Sampler Name: Joel Lowry																																											
FOR LAB USE ONLY		Lab I.D.		Sample I.D.		(G)RAB OR (C)OMP. # CONTAINERS		MATRIX		PRESERV.		SAMPLING																															
								GROUNDWATER		WASTEWATER		SOIL		OIL		SLUDGE		OTHER:		ACID/BASE		ICE / COOL		OTHER:		DATE		TIME															
H400302																																											
1		Exc. 4b NSW		G 1																								1/29/14		1000		x											
2		Exc. 4b WSW		G 1																								1/29/14		1010		x											
3		Exc. 4c NSW		G 1																								1/29/14		1020		x											
4		Exc. 4c ESW		G 1																								1/29/14		1030		x											
5		Exc. 4 ESW		G 1																								1/29/14		1050		x											
6		Exc. 3 NSW		G 1																								1/29/14		1100		x											
7		Exc. 3 ESW		G 1																								1/29/14		1110		x											
8		Exc. 3 SSW #1		G 1																								1/29/14		1120		x											
9		Exc. 3 East Floor		G 1																								1/29/14		1130		x x x											

PLEASE NOTE: Liability and Damages. Cardinal's liability and client's exclusive remedy for any claim arising whether based in contract or tort, shall be limited to the amount paid by the client for the analyses. All claims including those for negligence and any other cause whatsoever shall be deemed waived unless made in writing and received by Cardinal within 30 days after completion of the applicable service. In no event shall Cardinal be liable for incidental or consequential damages, including without limitation, business interruptions, loss of use, or loss of profits incurred by client, its subsidiaries, affiliates or successors arising out of or related to the performance of services hereunder by Cardinal, regardless of whether such claim is based upon any of the above stated reasons or otherwise.

Relinquished By: <i>Joel Lowry</i>		Date: 1/30/14		Received By: <i>Godi Henson</i>		Phone Result: <input type="checkbox"/> Yes <input type="checkbox"/> No		Add'l Phone #:	
Relinquished By:		Date:		Received By:		Fax Result: <input type="checkbox"/> Yes <input type="checkbox"/> No		Add'l Fax #:	
Delivered By: (Circle One) FORM-006 Sampler UPS - Bus - Other: Revision 1.0		Sample Condition Cool <input checked="" type="checkbox"/> Intact <input checked="" type="checkbox"/> <input type="checkbox"/> Yes <input type="checkbox"/> Yes <input type="checkbox"/> No <input type="checkbox"/> No		CHECKED BY: <i>[Signature]</i>		REMARKS: Please email results to pm@basinenv.com, TASavoie@BassPet.com & SJWalters@BassPet.com <i>2.54 cl- only</i>			

† Cardinal cannot accept verbal changes. Please fax written changes to 575-393-2476

February 07, 2014

JOEL LOWRY

Basin Environmental Service

P.O. Box 301

Lovington, NM 88260

RE: PLU #188Y

Enclosed are the results of analyses for samples received by the laboratory on 02/03/14 12:00.

Cardinal Laboratories is accredited through Texas NELAP under certificate number T104704398-13-5. Accreditation applies to drinking water, non-potable water and solid and chemical materials. All accredited analytes are denoted by an asterisk (*). For a complete list of accredited analytes and matrices visit the TCEQ website at www.tceq.texas.gov/field/qa/lab_accred_certif.html.

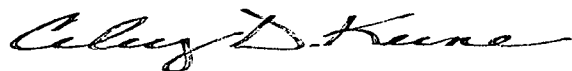
Cardinal Laboratories is accredited through the State of Colorado Department of Public Health and Environment for:

Method EPA 552.2	Haloacetic Acids (HAA-5)
Method EPA 524.2	Total Trihalomethanes (TTHM)
Method EPA 524.4	Regulated VOCs (V1, V2, V3)

Accreditation applies to public drinking water matrices.

This report meets NELAP requirements and is made up of a cover page, analytical results, and a copy of the original chain-of-custody. If you have any questions concerning this report, please feel free to contact me.

Sincerely,



Celey D. Keene

Lab Director/Quality Manager

Analytical Results For:

 Basin Environmental Service
 JOEL LOWRY
 P.O. Box 301
 Lovington NM, 88260
 Fax To: (575) 396-1429

 Received: 02/03/2014
 Reported: 02/07/2014
 Project Name: PLU #188Y
 Project Number: NONE GIVEN
 Project Location: EDDY COUNTY, NM

 Sampling Date: 01/31/2014
 Sampling Type: Soil
 Sampling Condition: Cool & Intact
 Sample Received By: Jodi Henson

Sample ID: EXC. 4B FLOOR @ 4' (H400318-01)

Chloride, SM4500Cl-B	mg/kg	Analyzed By: AP							
Analyte	Result	Reporting Limit	Analyzed	Method Blank	BS	% Recovery	True Value QC	RPD	Qualifier
Chloride	544	16.0	02/07/2014	ND	416	104	400	0.00	

Sample ID: EXC. 4C FLOOR @ 4' (H400318-02)

Chloride, SM4500Cl-B	mg/kg	Analyzed By: AP							
Analyte	Result	Reporting Limit	Analyzed	Method Blank	BS	% Recovery	True Value QC	RPD	Qualifier
Chloride	1100	16.0	02/07/2014	ND	416	104	400	3.92	

Sample ID: EXC. 4 EAST FLOOR (H400318-03)

Chloride, SM4500Cl-B	mg/kg	Analyzed By: AP							
Analyte	Result	Reporting Limit	Analyzed	Method Blank	BS	% Recovery	True Value QC	RPD	Qualifier
Chloride	464	16.0	02/07/2014	ND	416	104	400	3.92	

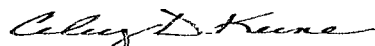
Sample ID: IN-SITU #1 (H400318-04)

Chloride, SM4500Cl-B	mg/kg	Analyzed By: AP							
Analyte	Result	Reporting Limit	Analyzed	Method Blank	BS	% Recovery	True Value QC	RPD	Qualifier
Chloride	11300	16.0	02/07/2014	ND	416	104	400	3.92	

Cardinal Laboratories

*=Accredited Analyte

PLEASE NOTE: Liability and Damages. Cardinal's liability and client's exclusive remedy for any claim arising, whether based in contract or tort, shall be limited to the amount paid by client for analyses. All claims, including those for negligence and any other cause whatsoever shall be deemed waived unless made in writing and received by Cardinal within thirty (30) days after completion of the applicable service. In no event shall Cardinal be liable for incidental or consequential damages, including, without limitation, business interruptions, loss of use, or loss of profits incurred by client, its subsidiaries, affiliates or successors arising out of or related to the performance of the services hereunder by Cardinal, regardless of whether such claim is based upon any of the above stated reasons or otherwise. Results relate only to the samples identified above. This report shall not be reproduced except in full with written approval of Cardinal Laboratories.



Celey D. Keene, Lab Director/Quality Manager

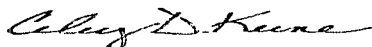
Notes and Definitions

ND	Analyte NOT DETECTED at or above the reporting limit
RPD	Relative Percent Difference
**	Samples not received at proper temperature of 6°C or below.
***	Insufficient time to reach temperature.
-	Chloride by SM4500Cl-B does not require samples be received at or below 6°C Samples reported on an as received basis (wet) unless otherwise noted on report

Cardinal Laboratories

*=Accredited Analyte

PLEASE NOTE: Liability and Damages. Cardinal's liability and client's exclusive remedy for any claim arising, whether based in contract or tort, shall be limited to the amount paid by client for analyses. All claims, including those for negligence and any other cause whatsoever shall be deemed waived unless made in writing and received by Cardinal within thirty (30) days after completion of the applicable service. In no event shall Cardinal be liable for incidental or consequential damages, including, without limitation, business interruptions, loss of use, or loss of profits incurred by client, its subsidiaries, affiliates or successors arising out of or related to the performance of the services hereunder by Cardinal, regardless of whether such claim is based upon any of the above stated reasons or otherwise. Results relate only to the samples identified above. This report shall not be reproduced except in full with written approval of Cardinal Laboratories.



Celey D. Keene, Lab Director/Quality Manager



(575) 393-2326 FAX (575) 393-2476

CHAIN-OF-CUSTODY AND ANALYSIS REQUEST

PLEASE NOTE: Liability and Damages. Cardinal's liability and client's exclusive remedy for any claim arising whether based in contract or tort, shall be limited to the amount paid by the client for the analyses. All claims including those for negligence and any other cause whatsoever shall be deemed waived unless made in writing and received by Cardinal within 30 days after completion of the applicable service. In no event shall Cardinal be liable for incidental or consequential damages, including without limitation, business interruptions, loss of use, or loss of profits incurred by client, its subsidiaries, affiliates or successors arising out of or related to the performance of services hereunder by Cardinal, regardless of whether such claim is based upon any of the above stated reasons or otherwise.

Relinquished By: <i>Paul Jones</i>	Date: <i>2/3/14</i>	Received By:	Phone Result: <input type="checkbox"/> Yes <input type="checkbox"/> No	Add'l Phone #:
	Time: <i>8:15</i>	<i>BR Blackman</i>	Fax Result: <input type="checkbox"/> Yes <input type="checkbox"/> No	Add'l Fax #:
Relinquished By:	Date: <i>2-3-14</i>	Received By:	REMARKS:	
<i>BR Blackman</i>	Time: <i>12:00</i>	<i>Jodi Benson</i>	Please email results to: pm@basinenv.com, TASavoie@BassPet.com & SJWalters@BassPet.com	
Delivered By: (Circle One)		Sample Condition	CHECKED BY:	
		Cool Intact	(Initials)	
	<i>4.2°C</i>	<input type="checkbox"/> Yes <input checked="" type="checkbox"/> No	<i>JA</i>	
Sampler - UPS - Bus - Other: FORM-006				

#54

February 11, 2014

JOEL LOWRY

Basin Environmental Service

P.O. Box 301

Lovington, NM 88260

RE: PLU #188Y

Enclosed are the results of analyses for samples received by the laboratory on 02/05/14 9:45.

Cardinal Laboratories is accredited through Texas NELAP under certificate number T104704398-13-5. Accreditation applies to drinking water, non-potable water and solid and chemical materials. All accredited analytes are denoted by an asterisk (*). For a complete list of accredited analytes and matrices visit the TCEQ website at www.tceq.texas.gov/field/qa/lab_accred_certif.html.

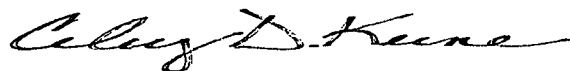
Cardinal Laboratories is accredited through the State of Colorado Department of Public Health and Environment for:

Method EPA 552.2	Haloacetic Acids (HAA-5)
Method EPA 524.2	Total Trihalomethanes (TTHM)
Method EPA 524.4	Regulated VOCs (V1, V2, V3)

Accreditation applies to public drinking water matrices.

This report meets NELAP requirements and is made up of a cover page, analytical results, and a copy of the original chain-of-custody. If you have any questions concerning this report, please feel free to contact me.

Sincerely,



Celey D. Keene

Lab Director/Quality Manager

Analytical Results For:

 Basin Environmental Service
 JOEL LOWRY
 P.O. Box 301
 Lovington NM, 88260
 Fax To: (575) 396-1429

 Received: 02/05/2014
 Reported: 02/11/2014
 Project Name: PLU #188Y
 Project Number: NONE GIVEN
 Project Location: EDDY COUNTY, NM

 Sampling Date: 02/04/2014
 Sampling Type: Soil
 Sampling Condition: Cool & Intact
 Sample Received By: Jodi Henson

Sample ID: EXC. 3B FLOOR (H400359-01)

Chloride, SM4500Cl-B			mg/kg		Analyzed By: HM				
Analyte	Result	Reporting Limit	Analyzed	Method Blank	BS	% Recovery	True Value QC	RPD	Qualifier
Chloride	2240	16.0	02/11/2014	ND	416	104	400	0.00	

Sample ID: EXC. 5 NSW (H400359-02)

Chloride, SM4500Cl-B			mg/kg		Analyzed By: HM					
Analyte	Result	Reporting Limit	Analyzed	Method Blank	BS	% Recovery	True Value QC	RPD	Qualifier	
Chloride	128	16.0	02/11/2014	ND	416	104	400	0.00		

Sample ID: EXC. 5 FLOOR (H400359-03)

BTEX 8021B			mg/kg		Analyzed By: MS				
Analyte	Result	Reporting Limit	Analyzed	Method Blank	BS	% Recovery	True Value QC	RPD	Qualifier
Benzene*	<0.050	0.050	02/11/2014	ND	2.34	117	2.00	4.12	
Toluene*	<0.050	0.050	02/11/2014	ND	2.32	116	2.00	3.68	
Ethylbenzene*	<0.050	0.050	02/11/2014	ND	2.30	115	2.00	4.18	
Total Xylenes*	<0.150	0.150	02/11/2014	ND	6.76	113	6.00	3.04	
Total BTEX	<0.300	0.300	02/11/2014	ND					

Surrogate: 4-Bromofluorobenzene (PIC) 119 % 89.4-126

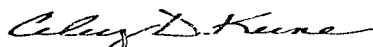
Chloride, SM4500Cl-B		mg/kg		Analyzed By: HM					
Analyte	Result	Reporting Limit	Analyzed	Method Blank	BS	% Recovery	True Value QC	RPD	Qualifier
Chloride	2920	16.0	02/11/2014	ND	416	104	400	0.00	

TPH 8015M		mg/kg		Analyzed By: ms					
Analyte	Result	Reporting Limit	Analyzed	Method Blank	BS	% Recovery	True Value QC	RPD	Qualifier

Cardinal Laboratories

*=Accredited Analyte

PLEASE NOTE: Liability and Damages. Cardinal's liability and client's exclusive remedy for any claim arising, whether based in contract or tort, shall be limited to the amount paid by client for analyses. All claims, including those for negligence and any other cause whatsoever shall be deemed waived unless made in writing and received by Cardinal within thirty (30) days after completion of the applicable service. In no event shall Cardinal be liable for incidental or consequential damages, including, without limitation, business interruptions, loss of use, or loss of profits incurred by client, its subsidiaries, affiliates or successors arising out of or related to the performance of the services hereunder by Cardinal, regardless of whether such claim is based upon any of the above stated reasons or otherwise. Results relate only to the samples identified above. This report shall not be reproduced except in full with written approval of Cardinal Laboratories.



Celey D. Keene, Lab Director/Quality Manager

Analytical Results For:

Basin Environmental Service
JOEL LOWRY
P.O. Box 301
Lovington NM, 88260
Fax To: (575) 396-1429

Received: 02/05/2014
Reported: 02/11/2014
Project Name: PLU #188Y
Project Number: NONE GIVEN
Project Location: EDDY COUNTY, NM

Sampling Date: 02/04/2014
Sampling Type: Soil
Sampling Condition: Cool & Intact
Sample Received By: Jodi Henson

Sample ID: EXC. 5 FLOOR (H400359-03)

TPH 8015M	mg/kg	Analyzed By: ms							
Analyte	Result	Reporting Limit	Analyzed	Method Blank	BS	% Recovery	True Value QC	RPD	Qualifier
GRO C6-C10	<10.0	10.0	02/07/2014	ND	205	102	200	8.13	
DRO >C10-C28	<10.0	10.0	02/07/2014	ND	197	98.5	200	11.2	
EXT DRO >C28-C35	<10.0	10.0	02/07/2014	ND					
<hr/>									
Surrogate: 1-Chlorooctane	101 %	65.2-140							
Surrogate: 1-Chlorooctadecane	104 %	63.6-154							

Sample ID: EXC. 5 SSW (H400359-04)

Chloride, SM4500Cl-B	mg/kg	Analyzed By: HM							
Analyte	Result	Reporting Limit	Analyzed	Method Blank	BS	% Recovery	True Value QC	RPD	Qualifier
Chloride	16.0	16.0	02/11/2014	ND	416	104	400	0.00	

Sample ID: EXC. 6 NSW (H400359-05)

Chloride, SM4500Cl-B	mg/kg	Analyzed By: HM							
Analyte	Result	Reporting Limit	Analyzed	Method Blank	BS	% Recovery	True Value QC	RPD	Qualifier
Chloride	64.0	16.0	02/11/2014	ND	416	104	400	0.00	

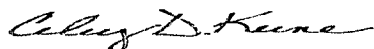
Sample ID: EXC. 6 FLOOR (H400359-06)

Chloride, SM4500Cl-B	mg/kg	Analyzed By: HM							
Analyte	Result	Reporting Limit	Analyzed	Method Blank	BS	% Recovery	True Value QC	RPD	Qualifier
Chloride	32.0	16.0	02/11/2014	ND	416	104	400	0.00	

Cardinal Laboratories

*=Accredited Analyte

PLEASE NOTE: Liability and Damages. Cardinal's liability and client's exclusive remedy for any claim arising, whether based in contract or tort, shall be limited to the amount paid by client for analyses. All claims, including those for negligence and any other cause whatsoever shall be deemed waived unless made in writing and received by Cardinal within thirty (30) days after completion of the applicable service. In no event shall Cardinal be liable for incidental or consequential damages, including, without limitation, business interruptions, loss of use, or loss of profits incurred by client, its subsidiaries, affiliates or successors arising out of or related to the performance of the services hereunder by Cardinal, regardless of whether such claim is based upon any of the above stated reasons or otherwise. Results relate only to the samples identified above. This report shall not be reproduced except in full with written approval of Cardinal Laboratories.



Celey D. Keene, Lab Director/Quality Manager

Analytical Results For:

Basin Environmental Service
JOEL LOWRY
P.O. Box 301
Lovington NM, 88260
Fax To: (575) 396-1429

Received: 02/05/2014
Reported: 02/11/2014
Project Name: PLU #188Y
Project Number: NONE GIVEN
Project Location: EDDY COUNTY, NM

Sampling Date: 02/04/2014
Sampling Type: Soil
Sampling Condition: Cool & Intact
Sample Received By: Jodi Henson

Sample ID: EXC. 6 SSW (H400359-07)

Chloride, SM4500Cl-B		mg/kg		Analyzed By: HM						
Analyte	Result	Reporting Limit	Analyzed	Method Blank	BS	% Recovery	True Value QC	RPD	Qualifier	
Chloride	<16.0	16.0	02/11/2014	ND	416	104	400	0.00		

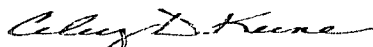
Sample ID: IN-SITU #2 (H400359-08)

Chloride, SM4500Cl-B		mg/kg		Analyzed By: HM						
Analyte	Result	Reporting Limit	Analyzed	Method Blank	BS	% Recovery	True Value QC	RPD	Qualifier	
Chloride	6080	16.0	02/11/2014	ND	416	104	400	0.00		

Cardinal Laboratories

*=Accredited Analyte

PLEASE NOTE: Liability and Damages. Cardinal's liability and client's exclusive remedy for any claim arising, whether based in contract or tort, shall be limited to the amount paid by client for analyses. All claims, including those for negligence and any other cause whatsoever shall be deemed waived unless made in writing and received by Cardinal within thirty (30) days after completion of the applicable service. In no event shall Cardinal be liable for incidental or consequential damages, including, without limitation, business interruptions, loss of use, or loss of profits incurred by client, its subsidiaries, affiliates or successors arising out of or related to the performance of the services hereunder by Cardinal, regardless of whether such claim is based upon any of the above stated reasons or otherwise. Results relate only to the samples identified above. This report shall not be reproduced except in full with written approval of Cardinal Laboratories.



Celey D. Keene, Lab Director/Quality Manager

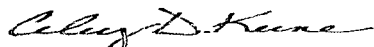
Notes and Definitions

ND	Analyte NOT DETECTED at or above the reporting limit
RPD	Relative Percent Difference
**	Samples not received at proper temperature of 6°C or below.
***	Insufficient time to reach temperature.
-	Chloride by SM4500Cl-B does not require samples be received at or below 6°C Samples reported on an as received basis (wet) unless otherwise noted on report

Cardinal Laboratories

*=Accredited Analyte

PLEASE NOTE: Liability and Damages. Cardinal's liability and client's exclusive remedy for any claim arising, whether based in contract or tort, shall be limited to the amount paid by client for analyses. All claims, including those for negligence and any other cause whatsoever shall be deemed waived unless made in writing and received by Cardinal within thirty (30) days after completion of the applicable service. In no event shall Cardinal be liable for incidental or consequential damages, including, without limitation, business interruptions, loss of use, or loss of profits incurred by client, its subsidiaries, affiliates or successors arising out of or related to the performance of the services hereunder by Cardinal, regardless of whether such claim is based upon any of the above stated reasons or otherwise. Results relate only to the samples identified above. This report shall not be reproduced except in full with written approval of Cardinal Laboratories.



Celey D. Keene, Lab Director/Quality Manager



(575) 393-2326 FAX (575) 393-2476

Page 6 of 6

PLEASE NOTE: Liability and Damages. Cardinal's liability and client's exclusive remedy for any claim arising whether based in contract or tort, shall be limited to the amount paid by the client for the analyses. All claims, including those for negligence and any other cause whatsoever shall be deemed waived unless made in writing and received by Cardinal within 30 days after completion of the applicable service. In no event shall Cardinal be liable for incidental or consequential damages, including without limitation, business interruptions, loss of use, or loss of profits incurred by client, its subsidiaries, affiliates or successors arising out of or related to the performance of services hereunder by Cardinal, regardless of whether such claim is based upon any of the above stated reasons or otherwise.

Revision 1.0

† Cardinal cannot accept verbal changes. Please fax written changes to 575-393-2476

#54

February 20, 2014

JOEL LOWRY

Basin Environmental Service

P.O. Box 301

Lovington, NM 88260

RE: PLU #188Y

Enclosed are the results of analyses for samples received by the laboratory on 02/12/14 13:40.

Cardinal Laboratories is accredited through Texas NELAP under certificate number T104704398-13-5. Accreditation applies to drinking water, non-potable water and solid and chemical materials. All accredited analytes are denoted by an asterisk (*). For a complete list of accredited analytes and matrices visit the TCEQ website at www.tceq.texas.gov/field/qa/lab_accred_certif.html.

Cardinal Laboratories is accredited through the State of Colorado Department of Public Health and Environment for:

Method EPA 552.2	Haloacetic Acids (HAA-5)
Method EPA 524.2	Total Trihalomethanes (TTHM)
Method EPA 524.4	Regulated VOCs (V1, V2, V3)

Accreditation applies to public drinking water matrices.

This report meets NELAP requirements and is made up of a cover page, analytical results, and a copy of the original chain-of-custody. If you have any questions concerning this report, please feel free to contact me.

Sincerely,



Celey D. Keene

Lab Director/Quality Manager

Analytical Results For:

 Basin Environmental Service
 JOEL LOWRY
 P.O. Box 301
 Lovington NM, 88260
 Fax To: (575) 396-1429

 Received: 02/12/2014
 Reported: 02/20/2014
 Project Name: PLU #188Y
 Project Number: NONE GIVEN
 Project Location: EDDY COUNTY, NM

 Sampling Date: 02/11/2014
 Sampling Type: Soil
 Sampling Condition: Cool & Intact
 Sample Received By: Kathy Perez

Sample ID: EXC. 7 NSW @ 3' (H400427-01)

Chloride, SM4500Cl-B		mg/kg	Analyzed By: AP						
Analyte	Result	Reporting Limit	Analyzed	Method Blank	BS	% Recovery	True Value QC	RPD	Qualifier
Chloride	<16.0	16.0	02/14/2014	ND	416	104	400	3.92	

Sample ID: EXC. 7 WSW @ 3' (H400427-02)

Chloride, SM4500Cl-B		mg/kg	Analyzed By: AP						
Analyte	Result	Reporting Limit	Analyzed	Method Blank	BS	% Recovery	True Value QC	RPD	Qualifier
Chloride	<16.0	16.0	02/14/2014	ND	416	104	400	3.92	

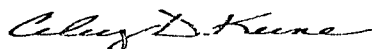
Sample ID: EXC. 7 EAST FLOOR @ 4' (H400427-03)

Chloride, SM4500Cl-B		mg/kg	Analyzed By: AP						
Analyte	Result	Reporting Limit	Analyzed	Method Blank	BS	% Recovery	True Value QC	RPD	Qualifier
Chloride	16.0	16.0	02/14/2014	ND	416	104	400	3.92	

Cardinal Laboratories

*=Accredited Analyte

PLEASE NOTE: Liability and Damages. Cardinal's liability and client's exclusive remedy for any claim arising, whether based in contract or tort, shall be limited to the amount paid by client for analyses. All claims, including those for negligence and any other cause whatsoever shall be deemed waived unless made in writing and received by Cardinal within thirty (30) days after completion of the applicable service. In no event shall Cardinal be liable for incidental or consequential damages, including, without limitation, business interruptions, loss of use, or loss of profits incurred by client, its subsidiaries, affiliates or successors arising out of or related to the performance of the services hereunder by Cardinal, regardless of whether such claim is based upon any of the above stated reasons or otherwise. Results relate only to the samples identified above. This report shall not be reproduced except in full with written approval of Cardinal Laboratories.



Celey D. Keene, Lab Director/Quality Manager

Analytical Results For:

Basin Environmental Service
JOEL LOWRY
P.O. Box 301
Lovington NM, 88260
Fax To: (575) 396-1429

Received: 02/12/2014
Reported: 02/20/2014
Project Name: PLU #188Y
Project Number: NONE GIVEN
Project Location: EDDY COUNTY, NM

Sampling Date: 02/11/2014
Sampling Type: Soil
Sampling Condition: Cool & Intact
Sample Received By: Kathy Perez

Sample ID: EXC. 7 WEST FLOOR @ 4' (H400427-04)

Chloride, SM4500CI-B			mg/kg		Analyzed By: AP				
Analyte	Result	Reporting Limit	Analyzed	Method Blank	BS	% Recovery	True Value QC	RPD	Qualifier
Chloride	80.0	16.0	02/14/2014	ND	416	104	400	3.92	
TPH 8015M			mg/kg		Analyzed By: ms				
Analyte	Result	Reporting Limit	Analyzed	Method Blank	BS	% Recovery	True Value QC	RPD	Qualifier
GRO C6-C10	<10.0	10.0	02/13/2014	ND	198	98.9	200	12.2	
DRO >C10-C28	<10.0	10.0	02/13/2014	ND	195	97.5	200	9.27	
EXT DRO >C28-C35	<10.0	10.0	02/13/2014	ND					
Surrogate: 1-Chlorooctane			105 %	65.2-140					
Surrogate: 1-Chlorooctadecane			105 %	63.6-154					

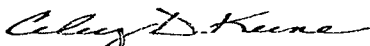
Sample ID: ROAD FLOOR #1 @ 18" (H400427-05)

Chloride, SM4500CI-B			mg/kg		Analyzed By: AP				
Analyte	Result	Reporting Limit	Analyzed	Method Blank	BS	% Recovery	True Value QC	RPD	Qualifier
Chloride	<16.0	16.0	02/14/2014	ND	416	104	400	3.92	

Cardinal Laboratories

*=Accredited Analyte

PLEASE NOTE: Liability and Damages. Cardinal's liability and client's exclusive remedy for any claim arising, whether based in contract or tort, shall be limited to the amount paid by client for analyses. All claims, including those for negligence and any other cause whatsoever shall be deemed waived unless made in writing and received by Cardinal within thirty (30) days after completion of the applicable service. In no event shall Cardinal be liable for incidental or consequential damages, including, without limitation, business interruptions, loss of use, or loss of profits incurred by client, its subsidiaries, affiliates or successors arising out of or related to the performance of the services hereunder by Cardinal, regardless of whether such claim is based upon any of the above stated reasons or otherwise. Results relate only to the samples identified above. This report shall not be reproduced except in full with written approval of Cardinal Laboratories.



Celey D. Keene, Lab Director/Quality Manager

Analytical Results For:

 Basin Environmental Service
 JOEL LOWRY
 P.O. Box 301
 Lovington NM, 88260
 Fax To: (575) 396-1429

 Received: 02/12/2014
 Reported: 02/20/2014
 Project Name: PLU #188Y
 Project Number: NONE GIVEN
 Project Location: EDDY COUNTY, NM

 Sampling Date: 02/11/2014
 Sampling Type: Soil
 Sampling Condition: Cool & Intact
 Sample Received By: Kathy Perez

Sample ID: ROAD FLOOR #2 @ 18" (H400427-06)

BTEX 8021B			mg/kg		Analyzed By: MS			S-04	
Analyte	Result	Reporting Limit	Analyzed	Method Blank	BS	% Recovery	True Value QC	RPD	Qualifier
Benzene*	<0.050	0.050	02/20/2014	ND	2.25	113	2.00	5.84	
Toluene*	<0.050	0.050	02/20/2014	ND	2.26	113	2.00	4.05	
Ethylbenzene*	<0.050	0.050	02/20/2014	ND	2.23	111	2.00	4.06	
Total Xylenes*	<0.150	0.150	02/20/2014	ND	6.57	110	6.00	2.90	
Total BTEX	<0.300	0.300	02/20/2014	ND					

Surrogate: 4-Bromofluorobenzene (PIC) 96.7 % 89.4-126

Chloride, SM4500Cl-B			mg/kg		Analyzed By: AP				
Analyte	Result	Reporting Limit	Analyzed	Method Blank	BS	% Recovery	True Value QC	RPD	Qualifier
Chloride	48.0	16.0	02/14/2014	ND	416	104	400	3.92	

TPH 8015M			mg/kg		Analyzed By: ms				
Analyte	Result	Reporting Limit	Analyzed	Method Blank	BS	% Recovery	True Value QC	RPD	Qualifier
GRO C6-C10	<10.0	10.0	02/13/2014	ND	198	98.9	200	12.2	
DRO >C10-C28	<10.0	10.0	02/13/2014	ND	195	97.5	200	9.27	
EXT DRO >C28-C35	<10.0	10.0	02/13/2014	ND					

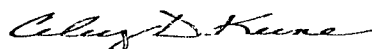
Surrogate: 1-Chlorooctane 107 % 65.2-140

Surrogate: 1-Chlorooctadecane 106 % 63.6-154

Cardinal Laboratories

*=Accredited Analyte

PLEASE NOTE: Liability and Damages. Cardinal's liability and client's exclusive remedy for any claim arising, whether based in contract or tort, shall be limited to the amount paid by client for analyses. All claims, including those for negligence and any other cause whatsoever shall be deemed waived unless made in writing and received by Cardinal within thirty (30) days after completion of the applicable service. In no event shall Cardinal be liable for incidental or consequential damages, including, without limitation, business interruptions, loss of use, or loss of profits incurred by client, its subsidiaries, affiliates or successors arising out of or related to the performance of the services hereunder by Cardinal, regardless of whether such claim is based upon any of the above stated reasons or otherwise. Results relate only to the samples identified above. This report shall not be reproduced except in full with written approval of Cardinal Laboratories.



Celey D. Keene, Lab Director/Quality Manager

Analytical Results For:

 Basin Environmental Service
 JOEL LOWRY
 P.O. Box 301
 Lovington NM, 88260
 Fax To: (575) 396-1429

 Received: 02/12/2014
 Reported: 02/20/2014
 Project Name: PLU #188Y
 Project Number: NONE GIVEN
 Project Location: EDDY COUNTY, NM

 Sampling Date: 02/11/2014
 Sampling Type: Soil
 Sampling Condition: Cool & Intact
 Sample Received By: Kathy Perez

Sample ID: ROAD SSW #1 (H400427-07)

Chloride, SM4500Cl-B		mg/kg		Analyzed By: AP						
Analyte	Result	Reporting Limit	Analyzed	Method Blank	BS	% Recovery	True Value QC	RPD	Qualifier	
Chloride	<16.0	16.0	02/14/2014	ND	416	104	400	3.92		

Sample ID: EXC. 6B SSW (H400427-08)

Chloride, SM4500Cl-B		mg/kg		Analyzed By: AP					
Analyte	Result	Reporting Limit	Analyzed	Method Blank	BS	% Recovery	True Value QC	RPD	Qualifier
Chloride	<16.0	16.0	02/14/2014	ND	416	104	400	3.92	

Sample ID: EXC. 6B WSW (H400427-09)

Chloride, SM4500Cl-B		mg/kg		Analyzed By: AP						
Analyte	Result	Reporting Limit	Analyzed	Method Blank	BS	% Recovery	True Value QC	RPD	Qualifier	
Chloride	<16.0	16.0	02/14/2014	ND	416	104	400	0.00		

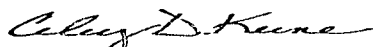
Sample ID: EXC. 6B ESW (H400427-10)

Chloride, SM4500Cl-B		mg/kg	Analyzed By: AP							
Analyte	Result	Reporting Limit	Analyzed	Method Blank	BS	% Recovery	True Value QC	RPD	Qualifier	
Chloride	<16.0	16.0	02/14/2014	ND	416	104	400	0.00		

Cardinal Laboratories

*=Accredited Analyte

PLEASE NOTE: Liability and Damages. Cardinal's liability and client's exclusive remedy for any claim arising, whether based in contract or tort, shall be limited to the amount paid by client for analyses. All claims, including those for negligence and any other cause whatsoever shall be deemed waived unless made in writing and received by Cardinal within thirty (30) days after completion of the applicable service. In no event shall Cardinal be liable for incidental or consequential damages, including, without limitation, business interruptions, loss of use, or loss of profits incurred by client, its subsidiaries, affiliates or successors arising out of or related to the performance of the services hereunder by Cardinal, regardless of whether such claim is based upon any of the above stated reasons or otherwise. Results relate only to the samples identified above. This report shall not be reproduced except in full with written approval of Cardinal Laboratories.



Celey D. Keene, Lab Director/Quality Manager

Analytical Results For:

 Basin Environmental Service
 JOEL LOWRY
 P.O. Box 301
 Lovington NM, 88260
 Fax To: (575) 396-1429

 Received: 02/12/2014
 Reported: 02/20/2014
 Project Name: PLU #188Y
 Project Number: NONE GIVEN
 Project Location: EDDY COUNTY, NM

 Sampling Date: 02/11/2014
 Sampling Type: Soil
 Sampling Condition: Cool & Intact
 Sample Received By: Kathy Perez


Sample ID: EXC. 6B FLOOR @ 4' (H400427-11)

Chloride, SM4500Cl-B		mg/kg		Analyzed By: AP					
Analyte	Result	Reporting Limit	Analyzed	Method Blank	BS	% Recovery	True Value QC	RPD	Qualifier
Chloride	160	16.0	02/14/2014	ND	416	104	400	0.00	
TPH 8015M		mg/kg		Analyzed By: ms					
Analyte	Result	Reporting Limit	Analyzed	Method Blank	BS	% Recovery	True Value QC	RPD	Qualifier
GRO C6-C10	<10.0	10.0	02/13/2014	ND	198	98.9	200	12.2	
DRO >C10-C28	<10.0	10.0	02/13/2014	ND	195	97.5	200	9.27	
EXT DRO >C28-C35	<10.0	10.0	02/13/2014	ND					
Surrogate: 1-Chlorooctane	95.6 %	65.2-140							
Surrogate: 1-Chlorooctadecane	93.3 %	63.6-154							

Cardinal Laboratories

*=Accredited Analyte

PLEASE NOTE: Liability and Damages. Cardinal's liability and client's exclusive remedy for any claim arising, whether based in contract or tort, shall be limited to the amount paid by client for analyses. All claims, including those for negligence and any other cause whatsoever shall be deemed waived unless made in writing and received by Cardinal within thirty (30) days after completion of the applicable service. In no event shall Cardinal be liable for incidental or consequential damages, including, without limitation, business interruptions, loss of use, or loss of profits incurred by client, its subsidiaries, affiliates or successors arising out of or related to the performance of the services hereunder by Cardinal, regardless of whether such claim is based upon any of the above stated reasons or otherwise. Results relate only to the samples identified above. This report shall not be reproduced except in full with written approval of Cardinal Laboratories.



Celey D. Keene, Lab Director/Quality Manager

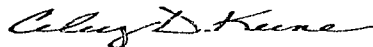
Notes and Definitions

S-04	The surrogate recovery for this sample is outside of established control limits due to a sample matrix effect.
ND	Analyte NOT DETECTED at or above the reporting limit
RPD	Relative Percent Difference
**	Samples not received at proper temperature of 6°C or below.
***	Insufficient time to reach temperature.
-	Chloride by SM4500Cl-B does not require samples be received at or below 6°C Samples reported on an as received basis (wet) unless otherwise noted on report

Cardinal Laboratories

*=Accredited Analyte

PLEASE NOTE: Liability and Damages. Cardinal's liability and client's exclusive remedy for any claim arising, whether based in contract or tort, shall be limited to the amount paid by client for analyses. All claims, including those for negligence and any other cause whatsoever shall be deemed waived unless made in writing and received by Cardinal within thirty (30) days after completion of the applicable service. In no event shall Cardinal be liable for incidental or consequential damages, including, without limitation, business interruptions, loss of use, or loss of profits incurred by client, its subsidiaries, affiliates or successors arising out of or related to the performance of the services hereunder by Cardinal, regardless of whether such claim is based upon any of the above stated reasons or otherwise. Results relate only to the samples identified above. This report shall not be reproduced except in full with written approval of Cardinal Laboratories.



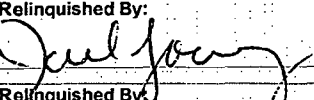
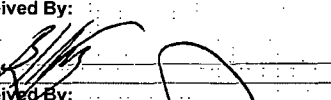
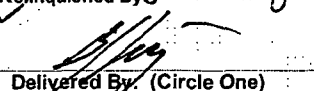
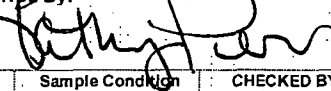
Celey D. Keene, Lab Director/Quality Manager



(575) 393-2326 FAX (575) 393-2476

CHAIN-OF-CUSTODY AND ANALYSIS REQUEST

Page 8 of 8

Company Name: Basin Environmental Service Technologies, LLC				BILL TO				ANALYSIS REQUEST																																	
Project Manager: Joel Lowry				P.O. #:				Chloride TPH (8015M) BTEX (8021B)																																	
Address: P.O. Box 301				Company: BOPCO, LP																																					
City: Lovington State: NM Zip: 88260				Attn: Tony Savoie																																					
Phone #: (575)396-2378 Fax #: (575)396-1429				Address: 522 W. Marland																																					
Project #: Project Owner:				City: Carlsbad																																					
Project Name: PLU #188 Y				State: NM Zip: 88220																																					
Project Location: Eddy Co., NM				Phone #: (432)556-8730																																					
Sampler Name: Joel Lowry				Fax #:																																					
FOR LAB USE ONLY						MATRIX		PRESERV.		SAMPLING																															
Lab I.D.		Sample I.D.		G/RAB OR C/COMP.		# CONTAINERS		GROUNDWATER		WASTEWATER		SOIL		OIL		SLUDGE		OTHER:		ACID/BASE:		ICE / COOL		OTHER:		DATE		TIME													
H400421				G		1						X										X				2/11/14		930													
2		Exc. 7 NSW @ 3'		G		1						X										X				2/11/14		940													
3		Exc. 7 WSW @ 3'		G		1						X										X				2/11/14		950													
4		Exc. 7 East Floor @ 4'		G		1						X										X				2/11/14		1000													
5		Exc. 7 West Floor @ 4'		G		1						X										X				2/11/14		1010													
6		Road Floor #1 @ 18"		G		1						X										X				2/11/14		1010													
7		Road Floor #2 @ 18"		G		1						X										X				2/11/14		1020													
8		Road SSW #1		G		1						X										X				2/11/14		1030													
9		Exc. 6b SSW		G		1						X										X				2/11/14		1040													
10		Exc. 6b WSW		G		1						X										X				2/11/14		1050													
11		Exc. 6b ESW		G		1						X										X				2/11/14		1100													
11		Exc. 6b Floor @ 4'		G		1						X										X				2/11/14		1110													
<p>PLEASE NOTE: Liability and Damages. Cardinal's liability and client's exclusive remedy for any claim arising whether based in contract or tort, shall be limited to the amount paid by the client for the analyses. All claims including those for negligence and any other cause whatsoever shall be deemed waived unless made in writing and received by Cardinal within 30 days after completion of the applicable service. In no event shall Cardinal be liable for incidental or consequential damages, including without limitation, business interruptions, loss of use, or loss of profits incurred by client, its subsidiaries, affiliates or successors arising out of or related to the performance of services hereunder by Cardinal, regardless of whether such claim is based upon any of the above stated reasons or otherwise.</p>																																									
Relinquished By: 				Date: 2/12/14		Received By: 				Phone Result: <input type="checkbox"/> Yes <input type="checkbox"/> No				Add'l Phone #:																											
Relinquished By: 				Date: 2/12/14		Received By: 				Fax Result: <input type="checkbox"/> Yes <input type="checkbox"/> No				Add'l Fax #:																											
Delivered By: (Circle One)				Sample Condition				CHECKED BY: (Initials)				REMARKS:																													
Sampler - UPS - Bus - Other: FORM-006				Cool Intact <input checked="" type="checkbox"/> Yes <input type="checkbox"/> No <input type="checkbox"/> Yes <input type="checkbox"/> No				3.6°C																LP																	
Please email results to pm@basinenv.com, TASavoie@BassPet.com & SJWalters@BassPet.com																																									

Revision 1.0

† Cardinal cannot accept verbal changes. Please fax written changes to 575-393-2476

February 20, 2014

JOEL LOWRY

Basin Environmental Service

P.O. Box 301

Lovington, NM 88260

RE: PLU #188Y

Enclosed are the results of analyses for samples received by the laboratory on 02/14/14 14:30.

Cardinal Laboratories is accredited through Texas NELAP under certificate number T104704398-13-5. Accreditation applies to drinking water, non-potable water and solid and chemical materials. All accredited analytes are denoted by an asterisk (*). For a complete list of accredited analytes and matrices visit the TCEQ website at www.tceq.texas.gov/field/qa/lab_accred_certif.html.

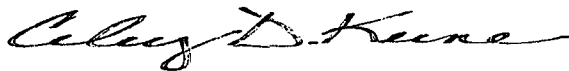
Cardinal Laboratories is accredited through the State of Colorado Department of Public Health and Environment for:

Method EPA 552.2	Haloacetic Acids (HAA-5)
Method EPA 524.2	Total Trihalomethanes (TTHM)
Method EPA 524.4	Regulated VOCs (V1, V2, V3)

Accreditation applies to public drinking water matrices.

This report meets NELAP requirements and is made up of a cover page, analytical results, and a copy of the original chain-of-custody. If you have any questions concerning this report, please feel free to contact me.

Sincerely,



Celey D. Keene

Lab Director/Quality Manager

Analytical Results For:

Basin Environmental Service
JOEL LOWRY
P.O. Box 301
Lovington NM, 88260
Fax To: (575) 396-1429

Received: 02/14/2014
Reported: 02/20/2014
Project Name: PLU #188Y
Project Number: NONE GIVEN
Project Location: EDDY COUNTY, NM

Sampling Date: 02/14/2014
Sampling Type: Soil
Sampling Condition: ** (See Notes)
Sample Received By: Jodi Henson

Sample ID: ROAD FLOOR #3 (H400456-01)

Chloride, SM4500CI-B		mg/kg	Analyzed By: HM						
Analyte	Result	Reporting Limit	Analyzed	Method Blank	BS	% Recovery	True Value QC	RPD	Qualifier
Chloride	176	16.0	02/19/2014	ND	400	100	400	0.00	

Sample ID: ROAD FLOOR #4 (H400456-02)

Chloride, SM4500CI-B		mg/kg	Analyzed By: AP						
Analyte	Result	Reporting Limit	Analyzed	Method Blank	BS	% Recovery	True Value QC	RPD	Qualifier
Chloride	368	16.0	02/19/2014	ND	400	100	400	0.00	

Sample ID: ROAD FLOOR #5 (H400456-03)

Chloride, SM4500CI-B		mg/kg	Analyzed By: AP						
Analyte	Result	Reporting Limit	Analyzed	Method Blank	BS	% Recovery	True Value QC	RPD	Qualifier
Chloride	<16.0	16.0	02/19/2014	ND	400	100	400	0.00	

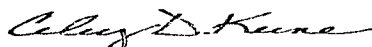
Sample ID: ROAD FLOOR #6 (H400456-04)

Chloride, SM4500CI-B		mg/kg	Analyzed By: AP						
Analyte	Result	Reporting Limit	Analyzed	Method Blank	BS	% Recovery	True Value QC	RPD	Qualifier
Chloride	96.0	16.0	02/19/2014	ND	400	100	400	0.00	

Cardinal Laboratories

*=Accredited Analyte

PLEASE NOTE: Liability and Damages. Cardinal's liability and client's exclusive remedy for any claim arising, whether based in contract or tort, shall be limited to the amount paid by client for analyses. All claims, including those for negligence and any other cause whatsoever shall be deemed waived unless made in writing and received by Cardinal within thirty (30) days after completion of the applicable service. In no event shall Cardinal be liable for incidental or consequential damages, including, without limitation, business interruptions, loss of use, or loss of profits incurred by client, its subsidiaries, affiliates or successors arising out of or related to the performance of the services hereunder by Cardinal, regardless of whether such claim is based upon any of the above stated reasons or otherwise. Results relate only to the samples identified above. This report shall not be reproduced except in full with written approval of Cardinal Laboratories.



Celey D. Keene, Lab Director/Quality Manager

Analytical Results For:

 Basin Environmental Service
 JOEL LOWRY
 P.O. Box 301
 Lovington NM, 88260
 Fax To: (575) 396-1429

 Received: 02/14/2014
 Reported: 02/20/2014
 Project Name: PLU #188Y
 Project Number: NONE GIVEN
 Project Location: EDDY COUNTY, NM

 Sampling Date: 02/14/2014
 Sampling Type: Soil
 Sampling Condition: ** (See Notes)
 Sample Received By: Jodi Henson

Sample ID: ROAD FLOOR #7 (H400456-05)

Chloride, SM4500Cl-B		mg/kg		Analyzed By: AP					
Analyte	Result	Reporting Limit	Analyzed	Method Blank	BS	% Recovery	True Value QC	RPD	Qualifier
Chloride	672	16.0	02/19/2014	ND	400	100	400	0.00	

Sample ID: ROAD FLOOR #8 (H400456-06)

Chloride, SM4500Cl-B		mg/kg		Analyzed By: HM					
Analyte	Result	Reporting Limit	Analyzed	Method Blank	BS	% Recovery	True Value QC	RPD	Qualifier
Chloride	16.0	16.0	02/19/2014	ND	400	100	400	0.00	

Sample ID: ROAD FLOOR #9 (H400456-07)

Chloride, SM4500Cl-B		mg/kg		Analyzed By: HM					
Analyte	Result	Reporting Limit	Analyzed	Method Blank	BS	% Recovery	True Value QC	RPD	Qualifier
Chloride	48.0	16.0	02/20/2014	ND	416	104	400	3.77	

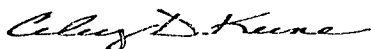
Sample ID: SOUTH ROAD #1 (H400456-08)

Chloride, SM4500Cl-B		mg/kg		Analyzed By: HM					
Analyte	Result	Reporting Limit	Analyzed	Method Blank	BS	% Recovery	True Value QC	RPD	Qualifier
Chloride	208	16.0	02/20/2014	ND	416	104	400	3.77	

Cardinal Laboratories

*=Accredited Analyte

PLEASE NOTE: Liability and Damages. Cardinal's liability and client's exclusive remedy for any claim arising, whether based in contract or tort, shall be limited to the amount paid by client for analyses. All claims, including those for negligence and any other cause whatsoever shall be deemed waived unless made in writing and received by Cardinal within thirty (30) days after completion of the applicable service. In no event shall Cardinal be liable for incidental or consequential damages, including, without limitation, business interruptions, loss of use, or loss of profits incurred by client, its subsidiaries, affiliates or successors arising out of or related to the performance of the services hereunder by Cardinal, regardless of whether such claim is based upon any of the above stated reasons or otherwise. Results relate only to the samples identified above. This report shall not be reproduced except in full with written approval of Cardinal Laboratories.



Celey D. Keene, Lab Director/Quality Manager

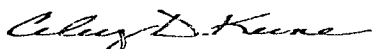
Notes and Definitions

ND	Analyte NOT DETECTED at or above the reporting limit
RPD	Relative Percent Difference
**	Samples not received at proper temperature of 6°C or below.
***	Insufficient time to reach temperature.
-	Chloride by SM4500Cl-B does not require samples be received at or below 6°C Samples reported on an as received basis (wet) unless otherwise noted on report

Cardinal Laboratories

*=Accredited Analyte

PLEASE NOTE: Liability and Damages. Cardinal's liability and client's exclusive remedy for any claim arising, whether based in contract or tort, shall be limited to the amount paid by client for analyses. All claims, including those for negligence and any other cause whatsoever shall be deemed waived unless made in writing and received by Cardinal within thirty (30) days after completion of the applicable service. In no event shall Cardinal be liable for incidental or consequential damages, including, without limitation, business interruptions, loss of use, or loss of profits incurred by client, its subsidiaries, affiliates or successors arising out of or related to the performance of the services hereunder by Cardinal, regardless of whether such claim is based upon any of the above stated reasons or otherwise. Results relate only to the samples identified above. This report shall not be reproduced except in full with written approval of Cardinal Laboratories.



Celey D. Keene, Lab Director/Quality Manager



(575) 393-2326 FAX (575) 393-2476

CHAIN-OF-CUSTODY AND ANALYSIS REQUEST

PLEASE NOTE: Liability and Damages. Cardinal's liability and client's exclusive remedy for any claim arising whether based in contract or tort, shall be limited to the amount paid by the client for the analyses. All claims (including those for negligence and any other cause whatsoever) shall be deemed waived unless made in writing and received by Cardinal within 30 days after completion of the applicable service. In no event shall Cardinal be liable for incidental or consequential damages, including without limitation, business interruptions, loss of use, or loss of profits incurred by client, its subsidiaries, affiliates or successors arising out of or related to the performance of services hereunder by Cardinal, regardless of whether such claim is based upon any of the above stated reasons or otherwise.

Relinquished By:	Date:	Received By:	Phone Result:	<input type="checkbox"/> Yes	<input type="checkbox"/> No	Add'l Phone #:
<i>Jul Jones</i>	2/14/14	<i>Jodi Benson</i>	Fax Result:	<input type="checkbox"/> Yes	<input type="checkbox"/> No	Add'l Fax #:
Relinquished By:	Date:	Received By:	REMARKS:			
	Time:		Please email results to pm@basinenv.com, TASavoie@BassPet.com & SJWalters@BassPet.com			
Delivered By: (Circle One)	Sample Condition	CHECKED BY:				
Sampler - UPS - Bus - Other:	Cool Intact	(Initials)				
FORM-006	<input type="checkbox"/> Yes <input checked="" type="checkbox"/> No	<i>[Signature]</i>				

54

February 28, 2014

JOEL LOWRY

Basin Environmental Service

P.O. Box 301

Lovington, NM 88260

RE: PLU #188Y

Enclosed are the results of analyses for samples received by the laboratory on 02/19/14 15:20.

Cardinal Laboratories is accredited through Texas NELAP under certificate number T104704398-13-5. Accreditation applies to drinking water, non-potable water and solid and chemical materials. All accredited analytes are denoted by an asterisk (*). For a complete list of accredited analytes and matrices visit the TCEQ website at www.tceq.texas.gov/field/qa/lab_accred_certif.html.

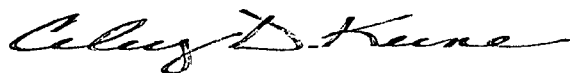
Cardinal Laboratories is accredited through the State of Colorado Department of Public Health and Environment for:

Method EPA 552.2	Haloacetic Acids (HAA-5)
Method EPA 524.2	Total Trihalomethanes (TTHM)
Method EPA 524.4	Regulated VOCs (V1, V2, V3)

Accreditation applies to public drinking water matrices.

This report meets NELAP requirements and is made up of a cover page, analytical results, and a copy of the original chain-of-custody. If you have any questions concerning this report, please feel free to contact me.

Sincerely,



Celey D. Keene

Lab Director/Quality Manager

Analytical Results For:

 Basin Environmental Service
 JOEL LOWRY
 P.O. Box 301
 Lovington NM, 88260
 Fax To: (575) 396-1429

 Received: 02/19/2014
 Reported: 02/28/2014
 Project Name: PLU #188Y
 Project Number: NONE GIVEN
 Project Location: EDDY COUNTY, NM

 Sampling Date: 02/19/2014
 Sampling Type: Soil
 Sampling Condition: Cool & Intact
 Sample Received By: Jodi Henson

Sample ID: PAD NSW #1 (H400501-01)

Chloride, SM4500Cl-B		mg/kg		Analyzed By: CK					
Analyte	Result	Reporting Limit	Analyzed	Method Blank	BS	% Recovery	True Value QC	RPD	Qualifier
Chloride	16.0	16.0	02/24/2014	ND	416	104	400	0.00	

Sample ID: PAD NSW #2 (H400501-02)

Chloride, SM4500Cl-B		mg/kg		Analyzed By: CK					
Analyte	Result	Reporting Limit	Analyzed	Method Blank	BS	% Recovery	True Value QC	RPD	Qualifier
Chloride	48.0	16.0	02/24/2014	ND	416	104	400	0.00	

Sample ID: PAD NSW #3 (H400501-03)

Chloride, SM4500Cl-B		mg/kg		Analyzed By: CK					
Analyte	Result	Reporting Limit	Analyzed	Method Blank	BS	% Recovery	True Value QC	RPD	Qualifier
Chloride	384	16.0	02/24/2014	ND	416	104	400	0.00	

Sample ID: PAD ESW #1 (H400501-04)

Chloride, SM4500Cl-B		mg/kg		Analyzed By: CK					
Analyte	Result	Reporting Limit	Analyzed	Method Blank	BS	% Recovery	True Value QC	RPD	Qualifier
Chloride	64.0	16.0	02/24/2014	ND	416	104	400	0.00	

Cardinal Laboratories

*=Accredited Analyte

PLEASE NOTE: Liability and Damages. Cardinal's liability and client's exclusive remedy for any claim arising, whether based in contract or tort, shall be limited to the amount paid by client for analyses. All claims, including those for negligence and any other cause whatsoever shall be deemed waived unless made in writing and received by Cardinal within thirty (30) days after completion of the applicable service. In no event shall Cardinal be liable for incidental or consequential damages, including, without limitation, business interruptions, loss of use, or loss of profits incurred by client, its subsidiaries, affiliates or successors arising out of or related to the performance of the services hereunder by Cardinal, regardless of whether such claim is based upon any of the above stated reasons or otherwise. Results relate only to the samples identified above. This report shall not be reproduced except in full with written approval of Cardinal Laboratories.



Celey D. Keene, Lab Director/Quality Manager

Analytical Results For:

Basin Environmental Service
JOEL LOWRY
P.O. Box 301
Lovington NM, 88260
Fax To: (575) 396-1429

Received: 02/19/2014
Reported: 02/28/2014
Project Name: PLU #188Y
Project Number: NONE GIVEN
Project Location: EDDY COUNTY, NM

Sampling Date: 02/19/2014
Sampling Type: Soil
Sampling Condition: Cool & Intact
Sample Received By: Jodi Henson

Sample ID: PAD SSW #1 (H400501-05)

Chloride, SM4500Cl-B		mg/kg		Analyzed By: CK					
Analyte	Result	Reporting Limit	Analyzed	Method Blank	BS	% Recovery	True Value QC	RPD	Qualifier
Chloride	32.0	16.0	02/24/2014	ND	416	104	400	0.00	

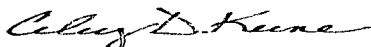
Sample ID: PAD FLOOR #1 (H400501-06)

Chloride, SM4500Cl-B		mg/kg		Analyzed By: CK					
Analyte	Result	Reporting Limit	Analyzed	Method Blank	BS	% Recovery	True Value QC	RPD	Qualifier
Chloride	32.0	16.0	02/24/2014	ND	416	104	400	0.00	

Cardinal Laboratories

*=Accredited Analyte

PLEASE NOTE: Liability and Damages. Cardinal's liability and client's exclusive remedy for any claim arising, whether based in contract or tort, shall be limited to the amount paid by client for analyses. All claims, including those for negligence and any other cause whatsoever shall be deemed waived unless made in writing and received by Cardinal within thirty (30) days after completion of the applicable service. In no event shall Cardinal be liable for incidental or consequential damages, including, without limitation, business interruptions, loss of use, or loss of profits incurred by client, its subsidiaries, affiliates or successors arising out of or related to the performance of the services hereunder by Cardinal, regardless of whether such claim is based upon any of the above stated reasons or otherwise. Results relate only to the samples identified above. This report shall not be reproduced except in full with written approval of Cardinal Laboratories.



Celey D. Keene, Lab Director/Quality Manager

Analytical Results For:

Basin Environmental Service
JOEL LOWRY
P.O. Box 301
Lovington NM, 88260
Fax To: (575) 396-1429

Received: 02/19/2014
Reported: 02/28/2014
Project Name: PLU #188Y
Project Number: NONE GIVEN
Project Location: EDDY COUNTY, NM

Sampling Date: 02/19/2014
Sampling Type: Soil
Sampling Condition: Cool & Intact
Sample Received By: Jodi Henson

Sample ID: PAD FLOOR #2 (H400501-07)

BTX 8260B		mg/kg		Analyzed By: MS					
Analyte	Result	Reporting Limit	Analyzed	Method Blank	BS	% Recovery	True Value QC	RPD	Qualifier
Benzene*	<0.050	0.050	02/27/2014	ND	1.92	95.8	2.00	2.11	
Toluene*	<0.050	0.050	02/27/2014	ND	1.99	99.5	2.00	1.91	
Ethylbenzene*	<0.050	0.050	02/27/2014	ND	1.86	93.0	2.00	2.50	
Total Xylenes*	<0.150	0.150	02/27/2014	ND	5.63	93.8	6.00	2.40	
Total BTX	<0.300	0.300	02/27/2014	ND					

Surrogate: Dibromofluoromethane 97.7 % 61.3-142

Surrogate: Toluene-d8 100 % 71.3-129

Surrogate: 4-Bromofluorobenzene 98.4 % 65.7-141

Chloride, SM4500CI-B		mg/kg		Analyzed By: CK					
Analyte	Result	Reporting Limit	Analyzed	Method Blank	BS	% Recovery	True Value QC	RPD	Qualifier
Chloride	48.0	16.0	02/24/2014	ND	416	104	400	0.00	

TPH 8015M		mg/kg		Analyzed By: ms					
Analyte	Result	Reporting Limit	Analyzed	Method Blank	BS	% Recovery	True Value QC	RPD	Qualifier
GRO C6-C10	<10.0	10.0	02/25/2014	ND	211	105	200	1.44	
DRO >C10-C28	<10.0	10.0	02/25/2014	ND	209	105	200	1.86	
EXT DRO >C28-C35	<10.0	10.0	02/25/2014	ND					

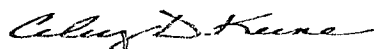
Surrogate: 1-Chlorooctane 95.9 % 65.2-140

Surrogate: 1-Chlorooctadecane 102 % 63.6-154

Cardinal Laboratories

*=Accredited Analyte

PLEASE NOTE: Liability and Damages. Cardinal's liability and client's exclusive remedy for any claim arising, whether based in contract or tort, shall be limited to the amount paid by client for analyses. All claims, including those for negligence and any other cause whatsoever shall be deemed waived unless made in writing and received by Cardinal within thirty (30) days after completion of the applicable service. In no event shall Cardinal be liable for incidental or consequential damages, including, without limitation, business interruptions, loss of use, or loss of profits incurred by client, its subsidiaries, affiliates or successors arising out of or related to the performance of the services hereunder by Cardinal, regardless of whether such claim is based upon any of the above stated reasons or otherwise. Results relate only to the samples identified above. This report shall not be reproduced except in full with written approval of Cardinal Laboratories.



Celey D. Keene, Lab Director/Quality Manager

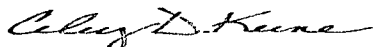
Notes and Definitions

ND	Analyte NOT DETECTED at or above the reporting limit
RPD	Relative Percent Difference
**	Samples not received at proper temperature of 6°C or below.
***	Insufficient time to reach temperature.
-	Chloride by SM4500Cl-B does not require samples be received at or below 6°C Samples reported on an as received basis (wet) unless otherwise noted on report

Cardinal Laboratories

*=Accredited Analyte

PLEASE NOTE: Liability and Damages. Cardinal's liability and client's exclusive remedy for any claim arising, whether based in contract or tort, shall be limited to the amount paid by client for analyses. All claims, including those for negligence and any other cause whatsoever shall be deemed waived unless made in writing and received by Cardinal within thirty (30) days after completion of the applicable service. In no event shall Cardinal be liable for incidental or consequential damages, including, without limitation, business interruptions, loss of use, or loss of profits incurred by client, its subsidiaries, affiliates or successors arising out of or related to the performance of the services hereunder by Cardinal, regardless of whether such claim is based upon any of the above stated reasons or otherwise. Results relate only to the samples identified above. This report shall not be reproduced except in full with written approval of Cardinal Laboratories.



Celey D. Keene, Lab Director/Quality Manager



CARDINAL LABORATORIES

101 East Marland, Hobbs, NM 88240

(575) 393-2326 FAX (575) 393-2476

CHAIN-OF-CUSTODY AND ANALYSIS REQUEST

Page 6 of 6

Company Name: Basin Environmental Service Technologies, LLC				BILL TO				ANALYSIS REQUEST																			
Project Manager: Joel Lowry				P.O. #:				<div style="display: flex; justify-content: space-around;"> <div>Chloride</div> <div>TPH (8015M)</div> <div>BTEX (8021B)</div> </div>																			
Address: P.O. Box 301				Company: BOPCO, LP																							
City: Lovington State: NM Zip: 88260				Attn: Tony Savoie																							
Phone #: (575)396-2378 Fax #: (575)396-1429				Address: 522 W. Marland																							
Project #: Project Owner:				City: Carlsbad																							
Project Name: PLU #188Y				State: NM Zip: 88220																							
Project Location: Eddy Co., NM				Phone #: (432)556-8730																							
Sampler Name: Joel Lowry				Fax #:																							
FOR LAB USE ONLY		Lab I.D.		Sample I.D.		GRAB OR (C)OMP.		# CONTAINERS		MATRIX		PRESERV.		SAMPLING													
										GROUNDWATER WASTEWATER SOIL OIL SLUDGE OTHER:		ACID/BASE: ICE / COOL OTHER:		DATE TIME													
H400501																											
1		Pad 23W#1		6		1				X		X		2/14/14 105		Y											
2		Pad 15W#2		6		1				X		Y		110		Y											
3		Pad 15W#3		6		1				Y		X		115		Y											
4		Pad 55W#1		6		1				X		X		170		Y											
5		Pad 55W#1		6		1				X		X		175		Y											
6		Pad Floor#1		6		1				X		X		130		Y											
7		Pad Floor#2		6		1				Y		Y		135		Y X Y											

PLEASE NOTE: Liability and Damages. Cardinal's liability and client's exclusive remedy for any claim arising whether based in contract or tort, shall be limited to the amount paid by the client for the analyses. All claims including those for negligence and any other cause whatsoever shall be deemed waived unless made in writing and received by Cardinal within 30 days after completion of the applicable service. In no event shall Cardinal be liable for incidental or consequential damages, including without limitation, business interruptions, loss of use, or loss of profits incurred by client, its subsidiaries, affiliates or successors arising out of or related to the performance of services hereunder by Cardinal, regardless of whether such claim is based upon any of the above stated reasons or otherwise.

Relinquished By: <i>Joel Lowry</i>		Date: 2/19/14		Received By: <i>Jodi Henson</i>		Phone Result: <input type="checkbox"/> Yes <input type="checkbox"/> No		Add'l Phone #:	
		Time: 3:20				Fax Result: <input type="checkbox"/> Yes <input type="checkbox"/> No		Add'l Fax #:	
Relinquished By:		Date:		Received By:		REMARKS:			
		Time:							
Delivered By: (Circle One)				Sample Condition		CHECKED BY:			
Sampler - UPS - Bus - Other:				Cool <input checked="" type="checkbox"/> Intact <input checked="" type="checkbox"/>		(Initials)			
FORM-006				5.20		<input type="checkbox"/> Yes <input type="checkbox"/> No <input type="checkbox"/> No <input type="checkbox"/> No			

Please email results to pm@basinenv.com,
TASavoie@BassPet.com & SJWalters@BassPet.com

Revision 1.0

† Cardinal cannot accept verbal changes. Please fax written changes to 575-393-2476

#54

March 03, 2014

JOEL LOWRY

Basin Environmental Service

P.O. Box 301

Lovington, NM 88260

RE: PLU #188Y

Enclosed are the results of analyses for samples received by the laboratory on 02/25/14 8:25.

Cardinal Laboratories is accredited through Texas NELAP under certificate number T104704398-13-5. Accreditation applies to drinking water, non-potable water and solid and chemical materials. All accredited analytes are denoted by an asterisk (*). For a complete list of accredited analytes and matrices visit the TCEQ website at www.tceq.texas.gov/field/qa/lab_accred_certif.html.

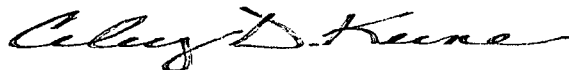
Cardinal Laboratories is accredited through the State of Colorado Department of Public Health and Environment for:

Method EPA 552.2	Haloacetic Acids (HAA-5)
Method EPA 524.2	Total Trihalomethanes (TTHM)
Method EPA 524.4	Regulated VOCs (V1, V2, V3)

Accreditation applies to public drinking water matrices.

This report meets NELAP requirements and is made up of a cover page, analytical results, and a copy of the original chain-of-custody. If you have any questions concerning this report, please feel free to contact me.

Sincerely,



Celey D. Keene

Lab Director/Quality Manager

Analytical Results For:

 Basin Environmental Service
 JOEL LOWRY
 P.O. Box 301
 Lovington NM, 88260
 Fax To: (575) 396-1429

 Received: 02/25/2014
 Reported: 03/03/2014
 Project Name: PLU #188Y
 Project Number: NONE GIVEN
 Project Location: EDDY COUNTY, NM

 Sampling Date: 02/24/2014
 Sampling Type: Soil
 Sampling Condition: Cool & Intact
 Sample Received By: Jodi Henson

Sample ID: PAD SSW #2 (H400562-01)

Chloride, SM4500Cl-B	mg/kg	Analyzed By: AP							
Analyte	Result	Reporting Limit	Analyzed	Method Blank	BS	% Recovery	True Value QC	RPD	Qualifier
Chloride	672	16.0	02/28/2014	ND	416	104	400	0.00	

Sample ID: PAD SSW #3 (H400562-02)

Chloride, SM4500Cl-B	mg/kg	Analyzed By: AP							
Analyte	Result	Reporting Limit	Analyzed	Method Blank	BS	% Recovery	True Value QC	RPD	Qualifier
Chloride	304	16.0	02/28/2014	ND	416	104	400	0.00	

Sample ID: PAD NSW #4 (H400562-03)

Chloride, SM4500Cl-B	mg/kg	Analyzed By: AP							
Analyte	Result	Reporting Limit	Analyzed	Method Blank	BS	% Recovery	True Value QC	RPD	Qualifier
Chloride	192	16.0	02/28/2014	ND	416	104	400	0.00	

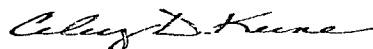
Sample ID: PAD WSW #1 (H400562-04)

Chloride, SM4500Cl-B	mg/kg	Analyzed By: AP							
Analyte	Result	Reporting Limit	Analyzed	Method Blank	BS	% Recovery	True Value QC	RPD	Qualifier
Chloride	928	16.0	02/28/2014	ND	416	104	400	3.92	

Cardinal Laboratories

* = Accredited Analyte

PLEASE NOTE: Liability and Damages. Cardinal's liability and client's exclusive remedy for any claim arising, whether based in contract or tort, shall be limited to the amount paid by client for analyses. All claims, including those for negligence and any other cause whatsoever shall be deemed waived unless made in writing and received by Cardinal within thirty (30) days after completion of the applicable service. In no event shall Cardinal be liable for incidental or consequential damages, including, without limitation, business interruptions, loss of use, or loss of profits incurred by client, its subsidiaries, affiliates or successors arising out of or related to the performance of the services hereunder by Cardinal, regardless of whether such claim is based upon any of the above stated reasons or otherwise. Results relate only to the samples identified above. This report shall not be reproduced except in full with written approval of Cardinal Laboratories.



Celey D. Keene, Lab Director/Quality Manager

Analytical Results For:

Basin Environmental Service
JOEL LOWRY
P.O. Box 301
Lovington NM, 88260
Fax To: (575) 396-1429

Received: 02/25/2014
Reported: 03/03/2014
Project Name: PLU #188Y
Project Number: NONE GIVEN
Project Location: EDDY COUNTY, NM

Sampling Date: 02/24/2014
Sampling Type: Soil
Sampling Condition: Cool & Intact
Sample Received By: Jodi Henson

Sample ID: PAD FLOOR #3 (H400562-05)**Chloride, SM4500Cl-B****mg/kg****Analyzed By: AP**

Analyte	Result	Reporting Limit	Analyzed	Method Blank	BS	% Recovery	True Value QC	RPD	Qualifier
Chloride	80.0	16.0	02/28/2014	ND	416	104	400	3.92	

Cardinal Laboratories

* = Accredited Analyte

PLEASE NOTE: Liability and Damages. Cardinal's liability and client's exclusive remedy for any claim arising, whether based in contract or tort, shall be limited to the amount paid by client for analyses. All claims, including those for negligence and any other cause whatsoever shall be deemed waived unless made in writing and received by Cardinal within thirty (30) days after completion of the applicable service. In no event shall Cardinal be liable for incidental or consequential damages, including, without limitation, business interruptions, loss of use, or loss of profits incurred by client, its subsidiaries, affiliates or successors arising out of or related to the performance of the services hereunder by Cardinal, regardless of whether such claim is based upon any of the above stated reasons or otherwise. Results relate only to the samples identified above. This report shall not be reproduced except in full with written approval of Cardinal Laboratories.



Celey D. Keene, Lab Director/Quality Manager

Analytical Results For:

Basin Environmental Service
JOEL LOWRY
P.O. Box 301
Lovington NM, 88260
Fax To: (575) 396-1429

Received: 02/25/2014
Reported: 03/03/2014
Project Name: PLU #188Y
Project Number: NONE GIVEN
Project Location: EDDY COUNTY, NM

Sampling Date: 02/24/2014
Sampling Type: Soil
Sampling Condition: Cool & Intact
Sample Received By: Jodi Henson

Sample ID: PAD FLOOR #4 (H400562-06)

BTX 8260B		mg/kg		Analyzed By: MS					
Analyte	Result	Reporting Limit	Analyzed	Method Blank	BS	% Recovery	True Value QC	RPD	Qualifier
Benzene*	<0.050	0.050	03/01/2014	ND	2.56	128	2.00	0.0783	
Toluene*	<0.050	0.050	03/01/2014	ND	2.58	129	2.00	1.51	
Ethylbenzene*	<0.050	0.050	03/01/2014	ND	2.39	120	2.00	2.02	
Total Xylenes*	<0.150	0.150	03/01/2014	ND	7.25	121	6.00	1.84	
Total BTX	<0.300	0.300	03/01/2014	ND					

Surrogate: Dibromofluoromethane 101 % 61.3-142

Surrogate: Toluene-d8 105 % 71.3-129

Surrogate: 4-Bromofluorobenzene 105 % 65.7-141

Chloride, SM4500Cl-B		mg/kg		Analyzed By: AP					
Analyte	Result	Reporting Limit	Analyzed	Method Blank	BS	% Recovery	True Value QC	RPD	Qualifier
Chloride	640	16.0	02/28/2014	ND	416	104	400	3.92	

TPH 8015M		mg/kg		Analyzed By: ms					
Analyte	Result	Reporting Limit	Analyzed	Method Blank	BS	% Recovery	True Value QC	RPD	Qualifier
GRO C6-C10	<10.0	10.0	03/01/2014	ND	213	107	200	3.32	
DRO >C10-C28	<10.0	10.0	03/01/2014	ND	214	107	200	2.58	
EXT DRO >C28-C35	<10.0	10.0	03/01/2014	ND					

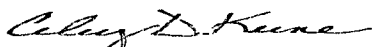
Surrogate: 1-Chlorooctane 96.1 % 65.2-140

Surrogate: 1-Chlorooctadecane 100 % 63.6-154

Cardinal Laboratories

*=Accredited Analyte

PLEASE NOTE: Liability and Damages. Cardinal's liability and client's exclusive remedy for any claim arising, whether based in contract or tort, shall be limited to the amount paid by client for analyses. All claims, including those for negligence and any other cause whatsoever shall be deemed waived unless made in writing and received by Cardinal within thirty (30) days after completion of the applicable service. In no event shall Cardinal be liable for incidental or consequential damages, including, without limitation, business interruptions, loss of use, or loss of profits incurred by client, its subsidiaries, affiliates or successors arising out of or related to the performance of the services hereunder by Cardinal, regardless of whether such claim is based upon any of the above stated reasons or otherwise. Results relate only to the samples identified above. This report shall not be reproduced except in full with written approval of Cardinal Laboratories.



Celey D. Keene, Lab Director/Quality Manager


Notes and Definitions

ND	Analyte NOT DETECTED at or above the reporting limit
RPD	Relative Percent Difference
**	Samples not received at proper temperature of 6°C or below.
***	Insufficient time to reach temperature.
-	Chloride by SM4500Cl-B does not require samples be received at or below 6°C Samples reported on an as received basis (wet) unless otherwise noted on report

Cardinal Laboratories

*=Accredited Analyte

PLEASE NOTE: Liability and Damages. Cardinal's liability and client's exclusive remedy for any claim arising, whether based in contract or tort, shall be limited to the amount paid by client for analyses. All claims, including those for negligence and any other cause whatsoever shall be deemed waived unless made in writing and received by Cardinal within thirty (30) days after completion of the applicable service. In no event shall Cardinal be liable for incidental or consequential damages, including, without limitation, business interruptions, loss of use, or loss of profits incurred by client, its subsidiaries, affiliates or successors arising out of or related to the performance of the services hereunder by Cardinal, regardless of whether such claim is based upon any of the above stated reasons or otherwise. Results relate only to the samples identified above. This report shall not be reproduced except in full with written approval of Cardinal Laboratories.



Celey D. Keene, Lab Director/Quality Manager

ARDINAL LABORATORIES

101 East Marland, Hobbs, NM. 88240.

(575) 393-2326 FAX (575) 393-2476

CHAIN-OF-CUSTODY AND ANALYSIS REQUEST

Page 6 of 6

[illegible]

PLEASE NOTE: Liability and Damages. Cardinal's liability and client's exclusive remedy for any claim arising whether based in contract or tort, shall be limited to the amount paid by the client for the analyses. All claims, including those for negligence and any other cause whatsoever shall be deemed waived unless made in writing and received by Cardinal within 30 days after completion of the applicable service. In no event shall Cardinal be liable for incidental or consequential damages, including without limitation, business interruptions, loss of use, or loss of profits incurred by client, its subsidiaries, affiliates or successors arising out of or related to the performance of services hereunder by Cardinal, regardless of whether such claim is based upon any of the above stated reasons or otherwise.

Relinquished By:		Date: 2-25-14	Received By:	Phone Result: <input type="checkbox"/> Yes <input type="checkbox"/> No	Add'l Phone #:
[Signature]		Time: 06:45	[Signature]	Fax Result: <input type="checkbox"/> Yes <input type="checkbox"/> No	Add'l Fax #:
Relinquished By:		Date: 2-25-14	Received By:	REMARKS:	
[Signature]		Time: 08:25	[Signature]		
Delivered By: (Circle One)		4.20c	Sample Condition	CHECKED BY: (Initials) [Signature]	
Sampler - UPS - Bus - Other: FORM-006			Cool <input type="checkbox"/> Yes <input checked="" type="checkbox"/> No Intact <input type="checkbox"/> Yes <input checked="" type="checkbox"/> No		
Please email results to pm@basinenv.com, TASavoie@BassPet.com & SJWalters@BassPet.com					

Revision 1.0

† Cardinal cannot accept verbal changes. Please fax written changes to 575-393-2476