

Bratcher, Mike, EMNRD

From: Amy Ruth <aruth@diversifiedfsi.com>
Sent: Friday, October 11, 2013 9:45 AM
To: Bratcher, Mike, EMNRD
Cc: SJWalters@BassPet.Com; Michael Patterson; Stephen McGhee
Subject: RE: Concern about BOPCO PLU #139

Hey Mike,

Thank you so much for your assistance with this site. Per our discussion this morning, BOPCO will drill the site at SP3 to delineate that point. Due to the problem with the unavailable lab data and the difficulty of retrieving new samples from under the liner, our field data along with drilling lab data at SP3 will be sufficient in this case. Again, thanks and talk to you soon.

Amy

From: Amy Ruth
Sent: Thursday, October 10, 2013 3:27 PM
To: Mike Bratcher (mike.bratcher@state.nm.us)
Cc: SJWalters@BassPet.Com; Michael Patterson; Stephen McGhee - Diversified Field Service, Inc. (smcghee@diversifiedfsi.com)
Subject: Concern about BOPCO PLU #139
Importance: High

Hey Mike,

I just left you a voicemail because I've got a situation on the BOPCO PLU #139 and need to ask for your advice. At this site, I delineated the leak in the field using Standard Method 4500 cl- B, as always (field data is on the attached plat). The site was excavated to 3' bgs, a 20 mil liner was installed, one of the 3 sample points (SP3) was installed with a PVC pipe for possible drilling, and the excavation was backfilled. I realized today that I had inadvertently disposed of the samples for this site without submitting them to the lab.

I thought it might be acceptable to auger in at an angle under the liner, say around the perimeter in several places to grab samples as deep as we can reach so as not to compromise the liner. We had encountered auger refusal at approximately 6' bgs at this site during our previous delineation and had to use a backhoe to grab 8' and 10' samples. That's as deep as we were able to get with the backhoe due to the compacted caliche at that depth.

Please call me at your convenience to discuss.

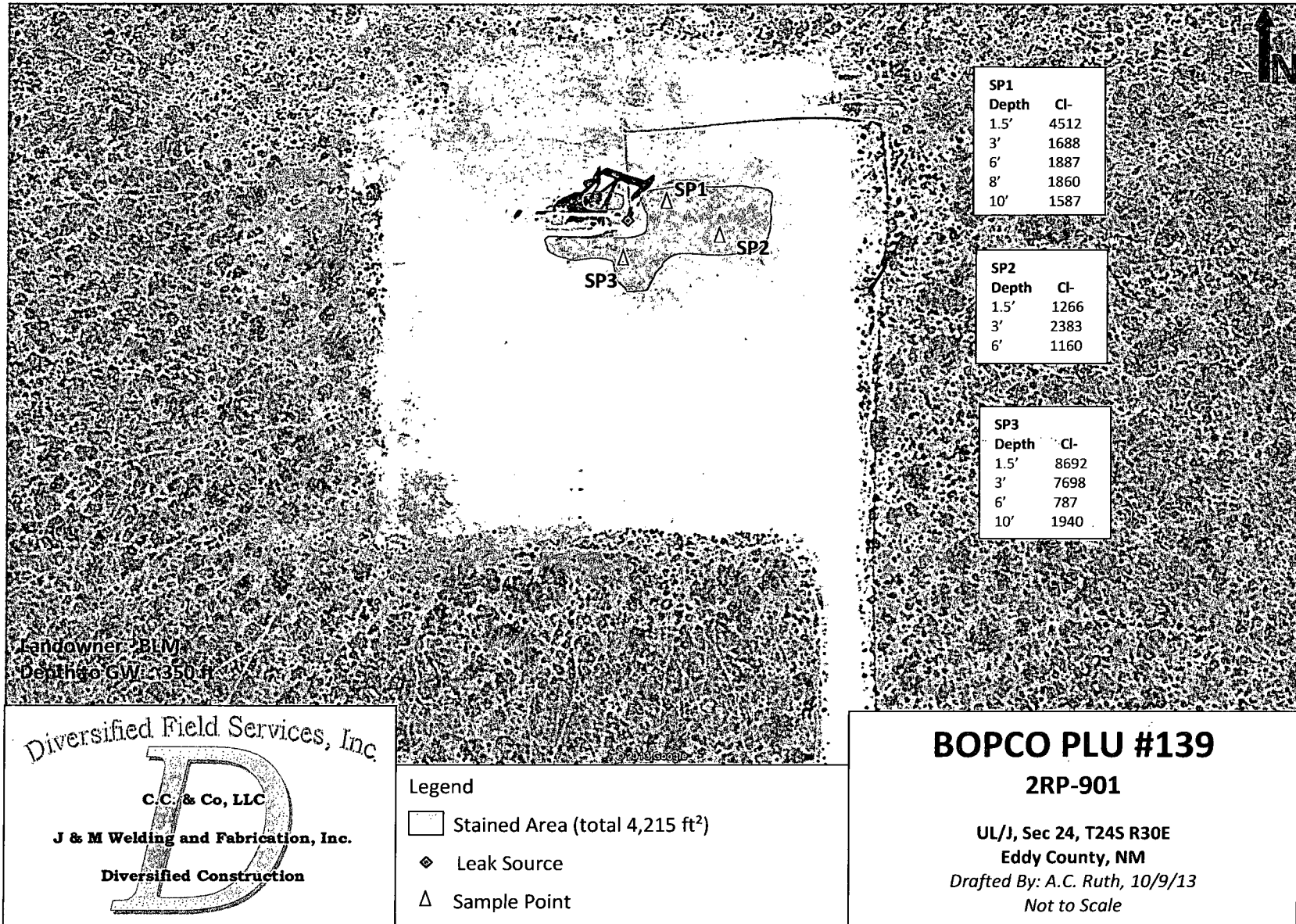
Thank you!

Amy C. Ruth
Diversified Field Services, Inc.
315 S. Leech St.
Hobbs, NM 88240
Office: (575)397-6437
Mobile: (575)390-5454
Fax: (575)393-2981

"Nothing will work unless you do." -Maya Angelou

This email and any files transmitted with it are confidential and intended solely for the use of the individual or entity to whom they are addressed. If you have received this email in error please notify the system manager. This message contains confidential information and is intended only for the individual named. If you are not the named addressee you should not disseminate, distribute or copy this e-mail. Please notify the sender immediately by e-mail if you have received this e-mail by mistake and delete this e-mail from your system. If you are not the intended recipient you are notified that disclosing, copying, distributing or taking any action in reliance on the contents of this information is strictly prohibited.

Site Diagram with Field Sample Data



10/11 Called Amy - samples obtained will be ok - they will go back in w/ris to delineate

Bratcher, Mike, EMNRD

@ a late time -

From: Amy Ruth <aruth@diversifiedfsi.com>
Sent: Thursday, October 10, 2013 3:28 PM
To: Bratcher, Mike, EMNRD
Cc: SJWalters@BassPet.Com; Michael Patterson; Stephen McGhee
Subject: Concern about BOPCO PLU #139
Attachments: BOPCO PLU #139 - Site Diagram w Sample Data.pdf
Importance: High

Hey Mike,

I just left you a voicemail because I've got a situation on the BOPCO PLU #139 and need to ask for your advice. At this site, I delineated the leak in the field using Standard Method 4500 cl- B, as always (field data is on the attached plat). The site was excavated to 3' bgs, a 20 mil liner was installed, one of the 3 sample points (SP3) was installed with a PVC pipe for possible drilling, and the excavation was backfilled. I realized today that I had inadvertently disposed of the samples for this site without submitting them to the lab.

I thought it might be acceptable to auger in at an angle under the liner, say around the perimeter in several places to grab samples as deep as we can reach so as not to compromise the liner. We had encountered auger refusal at approximately 6' bgs at this site during our previous delineation and had to use a backhoe to grab 8' and 10' samples. That's as deep as we were able to get with the backhoe due to the compacted caliche at that depth.

Please call me at your convenience to discuss.

Thank you!

Amy C. Ruth

Diversified Field Services, Inc.
315 S. Leech St.
Hobbs, NM 88240
Office: (575)397-6437
Mobile: (575)390-5454
Fax: (575)393-2981

"Nothing will work unless you do." -Maya Angelou

This email and any files transmitted with it are confidential and intended solely for the use of the individual or entity to whom they are addressed. If you have received this email in error please notify the system manager. This message contains confidential information and is intended only for the individual named. If you are not the named addressee you should not disseminate, distribute or copy this e-mail. Please notify the sender immediately by e-mail if you have received this e-mail by mistake and delete this e-mail from your system. If you are not the intended recipient you are notified that disclosing, copying, distributing or taking any action in reliance on the contents of this information is strictly prohibited.