


	CLIENT	PROJECT DESCRIPTION	FIGURE 1
 <p>TITANIUM ENVIRONMENTAL SERVICES, LLC PO Box 4029 Longview, Texas 75606 Phone (903) 234-8443 Fax (903) 234-1641 www.titaniumenvironmental.com</p>	<p>Burk Royalty Co., Ltd</p>	<p>Release Report Cruces No. 6 API 025-02462 Lea County, New Mexico</p>	<p>Site Location <small>Date created: 03.26.2014 Revised by: J. Van Dyke</small></p>

JUN 10 2014



Notes

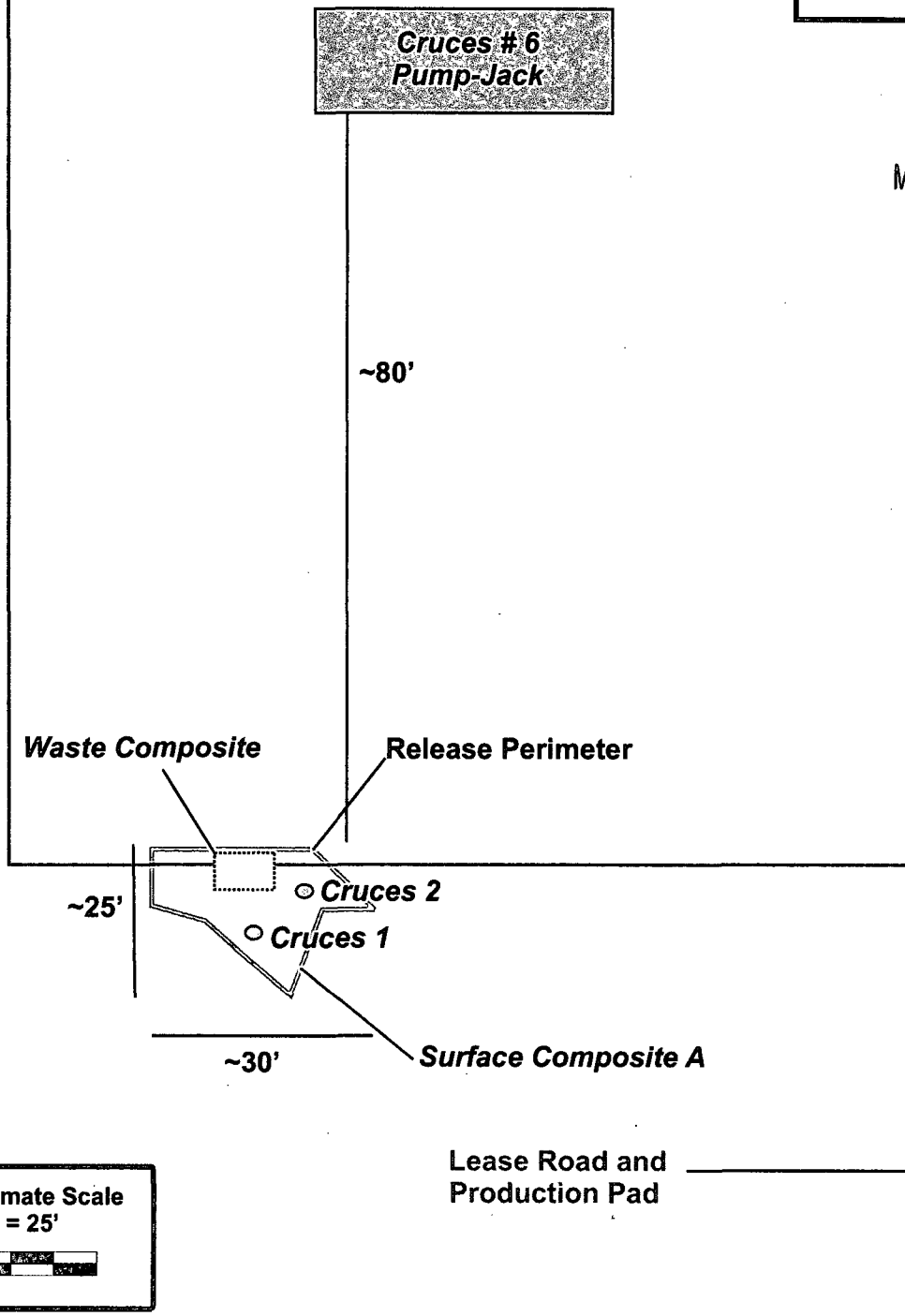
"Waste Composite" is a 5-part composite collected within the given boundary.

"Surface Composite A" is a 5-part composite collected within the "Release Perimeter", excluding the "Waste Composite Perimeter".

HOBBS OCD

MAR 27 2014

RECEIVED



Approximate Scale
1" = 25'



**TITANIUM
ENVIRONMENTAL
SERVICES, LLC**

PO Box 4029 Longview, Texas 75606
Phone (903) 234-8443 Fax (903) 234-1641
www.titaniumenvironmental.com

CLIENT

Burk Royalty Co., Ltd

PROJECT DESCRIPTION

Release Report
Cruces No. 6
API 025-02462
Lea County, New Mexico

FIGURE 2

**Sampling
Locations**

Date created: 03.26.2014
Revised by: J. Van Dyke

BURK ROYALTY CO., LTD
CRUCES #6- API 025-02462
SITE PHOTOS
February 18, 2014

HOBBS OCD

MAR 27 2014

RECEIVED

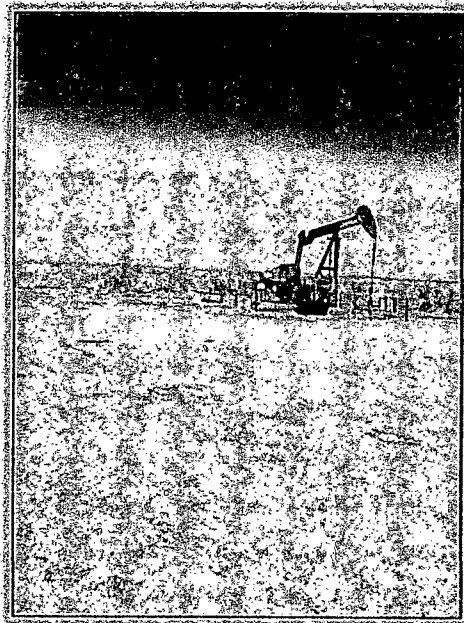


Photo 1.: View of the Cruces # 6 pump-jack taken from release location, approximately 80-feet south of the pump-jack.

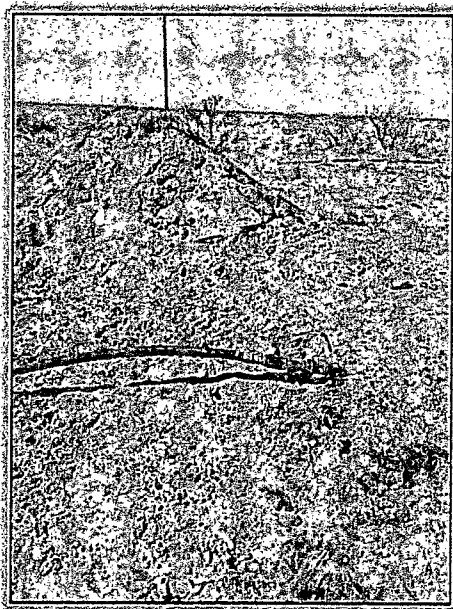


Photo 2.: View of release location displaying the excavated soil in the background and the excavated area in the foreground.

BURK ROYALTY CO., LTD
CRUCES #6- API 025-02462
SITE PHOTOS
February 18, 2014

HOBBS OCD

MAR 27 2014

RECEIVED

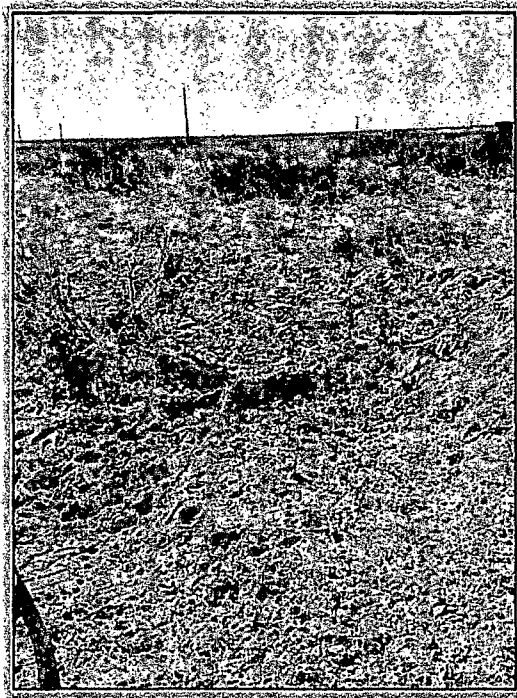


Photo 3.: View facing southwest, showing the main extent of the release.

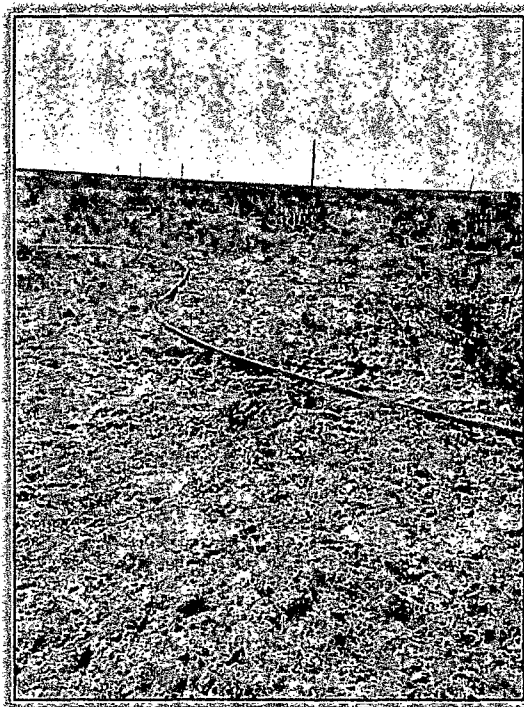


Photo 4.: View facing south, photo showing one of the two surface stains remaining at the time of sampling at the eastern boundary of the release.

BURK ROYALTY CO., LTD
CRUCES #6- API 025-02462
SITE PHOTOS
February 18, 2014



HOBBS OCD

MAR 27 2014

RECEIVED

Photo 5.: View of the main footprint of the release from the western side of the release area facing east. Darker soil in the far right and middle of the photo displays the other surface stain at the sample location "Cruces 1".



Photo 6.: View facing east at the most western extent of the excavation and the release.