

Basin Environmental Service Technologies, LLC

3100 Plains Highway
P. O. Box 301
Lovington, New Mexico 88260
bjarguijo@basinenv.com
Office: (575) 396-2378 Fax: (575) 396-1429



REMEDIATION SUMMARY & RISK-BASED SITE CLOSURE REQUEST

**BOPCO, LP
POKER LAKE UNIT #158 FLOWLINE
Eddy County, New Mexico
UNIT LTR "A" (NE/NE), Section 7, Township 24 South, Range 30 East
Latitude 32.237274° North, Longitude 103.914835° West**

Prepared For:

**BOPCO, LP
522 W. Mermod, Suite 704
Carlsbad, New Mexico 88220**



Prepared By:

**Basin Environmental Service Technologies, LLC
3100 Plains Highway
Lovington, New Mexico 88260**

June 2011



Ben J. Arguijo
Project Manager

TABLE OF CONTENTS

1.0 INTRODUCTION AND BACKGROUND INFORMATION.....	1
2.0 NMOCD SITE CLASSIFICATION.....	1
3.0 SUMMARY OF SOIL REMEDIATION ACTIVITIES.....	2
4.0 QA/QC PROCEDURES.....	4
4.1 Soil Sampling.....	4
4.2 Decontamination of Equipment.....	4
4.3 Laboratory Protocol.....	5
5.0 SITE CLOSURE REQUEST.....	5
6.0 LIMITATIONS.....	5
7.0 DISTRIBUTION.....	6

FIGURES

Figure 1 – Site Location Map

Figure 2 – Site & Sample Location Map

TABLES

Table 1 – Concentrations of TPH & Chlorides in Soil

Table 2 – Field-Test Results

APPENDICES

Appendix A – Release Notification and Corrective Action (Form C-141)

Appendix B – Photographs

Appendix C – Laboratory Analytical Reports

1.0 INTRODUCTION AND BACKGROUND INFORMATION

Basin Environmental Service Technologies, LLC (Basin), on behalf of BOPCO, LP (BOPCO), has prepared this *Remediation Summary & Risk-Based Site Closure Request* for the release site known as Poker Lake Unit #158 Flowline. The legal description of the release site is Unit Letter "A" (NE/NE), Section 7, Township 24 South, Range 30 East, in Eddy County, New Mexico. The geographic coordinates of the release site are 32.237274° North latitude and 103.914835° West longitude. The property affected by the release is owned by The United States Department of the Interior - Bureau of Land Management (BLM). Please reference Figure 1 for a "Site Location Map".

On May 8, 2010, BOPCO discovered a release had occurred at the Poker Lake Unit #158 site. Failure of a two and three-eighths inch (2 3/8") flowline resulted in a release of crude oil and produced water. During initial response activities, a temporary line clamp was installed on the flowline to mitigate the release. The release was reported to the New Mexico Oil Conservation Division (NMOCD) Artesia District Office on May 8, 2010. The Release Notification and Corrective Action (Form C-141) indicated approximately ten (10) barrels of crude oil and approximately five (5) barrels of produced water were released, with no recovery. The release impacted an area of pasture land measuring approximately one hundred and twenty-five feet (125') in length and approximately two feet (2') in width. The release also impacted approximately eight hundred square feet (800 ft²) of the caliche access road. Heavily impacted soil was removed and stockpiled on-site, pending final disposition.

On July 5, 2010, BOPCO discovered an additional release had occurred at the Poker Lake Unit #158 site. Failure of a two and three-eighths inch (2 3/8") flow line resulted in a release of crude oil and produced water. During initial response activities, a temporary line clamp was installed on the flowline to mitigate the release. The release was reported to the NMOCD Artesia District Office on July 5, 2010. The Form C-141 indicated approximately ten (10) barrels of crude oil and ten (10) barrels of produced water was released, with no recovery. The release impacted an area of pasture land measuring approximately three hundred feet (300') in length and approximately two feet (2') in width. The release also impacted approximately two hundred square feet (200 ft²) of the caliche access road. The release followed the same pathway as the May 8, 2010, release. Heavily impacted soil was removed and stockpiled on-site, pending final disposition.

The Form C-141 for both the May 8, 2010, and July 5, 2010, releases are provided as Appendix A. Remediation activities for both releases were conducted simultaneously.

2.0 NMOCD SITE CLASSIFICATION

A search of the New Mexico Water Rights Reporting System (NMWRRS) database maintained by the New Mexico Office of the State Engineer (NMOSE) indicated information was unavailable for Section 7, Township 24 South, Range 30 East. A depth-to-groundwater reference map utilized by the NMOCD indicates groundwater should be encountered at approximately one hundred and fifty feet (150') to one hundred and seventy-five feet (175') below ground surface (bgs). Based on the NMOCD ranking system, zero (0) points will be assigned to the site as a result of this criterion.

A search of the NMWRRS database indicated there are no water wells within 1,000 feet of the release. Based on the NMOCD ranking system, zero (0) points will be assigned to the site as a result of this criterion.

There are no surface water bodies within 1,000 feet of the release. Based on the NMOCD ranking system, zero (0) points will be assigned to the site as a result of this criterion.

NMOCD guidelines indicate the Poker Lake Unit #158 Flowline release site has an initial ranking score of zero (0) points. The soil remediation levels for a site with a ranking score of zero (0) points are as follows:

- Benzene – 10 mg/Kg (ppm)
- BTEX – 50 mg/Kg (ppm)
- TPH – 5,000 mg/Kg (ppm)

The New Mexico Administrative Code (NMAC) does not currently specify a remediation level for chloride concentrations in soil. Chloride remediation levels are set by the NMOCD on a site-specific basis.

3.0 SUMMARY OF SOIL REMEDIATION ACTIVITIES

Following initial response activities, from July 14 through 16, 2010, twenty-nine (29) soil samples (Sample 1 @ Surface, Sample 1 @ 1', Sample 2 @ 6", Sample 2 @ 4', Sample 2 @ 8', Sample 3 @ 1', Sample 4 @ 1', Sample 5 @ 1', Sample 6 @ 1', Sample 8 @ 6", Sample 8 @ 4', Sample 8 @ 8', Sample 9 @ 1', Sample 9 @ 3', Sample 9 @ 5', Sample 12 @ 1', Sample 18 @ 1', Sample 18 @ 3', Sample 22 @ 6", Sample 22 @ 4', Sample 22 @ 8', Sample 24 @ 6", Sample 24 @ 4', Sample 24 @ 8', Sample 25 @ 1', Sample 27 @ 1', Sample 30 @ 1', Sample 32 @ 1', and Sample 33 @ 1') were collected to delineate the vertical and horizontal extent of contamination at the site. The soil samples were submitted to Cardinal Laboratories in Hobbs, New Mexico, for analysis of chloride concentrations using EPA Method 4500 Cl-B. Selected soil samples (Sample 2 @ 6", Sample 2 @ 8', Sample 8 @ 6", Sample 8 @ 4', Sample 8 @ 8', Sample 18 @ 1', Sample 24 @ 6") were also analyzed for total petroleum hydrocarbon (TPH) concentrations using EPA Method SW-846 8015M. Table 1 summarizes the "Concentrations of TPH & Chlorides in Soil". A "Site & Sample Location Map" is provided as Figure 2. Laboratory analytical reports are provided as Appendix C.

Laboratory analytical results indicated chloride concentrations ranged from less than the laboratory method detection limit (MDL) soil samples Sample 5 @ 1', Sample 6 @ 1', Sample 25 @ 1', Sample 27 @ 1', Sample 30 @ 1', and Sample 32 @ 1' to 28,400 mg/Kg in soil sample Sample 8 @ 8'. TPH concentrations ranged from less than the laboratory MDL in Sample 18 @ 1' to 9,227 mg/Kg in soil sample Sample 8 @ 6".

Based on laboratory analytical results, further delineation was required in the areas defined by soil samples Sample 2, Sample 8, Sample 9, Sample 22, and Sample 24, as documented in the *Remediation Summary and Risk-Based Closure Strategy* dated August 2010.

On February 14, 2011, delineation of the areas defined by soil samples Sample 2, Sample 8, Sample 9, Sample 22, and Sample 24 commenced at the site. Hach Quantab Chloride Titrators and a Photo-Ionization Detector (PID) were used to field-screen the horizontal and vertical extent of impacted soil at the site. Results of field-testing are summarized in Table 2, "Field-Test Results".

Based on results of field-tests, the release site was divided into two sections: North Excavation and South Excavation. The North Excavation (N Exc) was advanced in the area defined by soil samples Sample 8, Sample 9, and Sample 10. The South Excavation (S Exc) was advanced in the area defined by soil samples Sample 24 and Sample 32. In an effort to mitigate damage to surface topography and vegetation, the South Excavation was further divided into three subsections: Section 1, Section 2, and Section 3. Field tests indicated no further remediation would be required in the area defined by soil sample Sample 22.

Impacted soil in the area defined by soil sample Sample 2 was removed during excavation of the road-crossing(s) of four (4) of the on-site flowlines.

From February 23 through February 28, 2011, approximately one hundred (100) cy of impacted material was excavated from the North Excavation and transported to Lea Land, Inc. (NMOCD Permit #WM-01-035), for disposal. Approximately three hundred (300) cubic yards (cy) of impacted material was excavated and stockpiled on-site, pending final disposition. Final dimensions of the North Excavation were approximately eighty-five feet (85') in length, approximately thirty feet (30') in width, and approximately five feet (5') in depth.

On February 25, 2011, excavation commenced in Section 1 of the South Excavation (S Exc Sec 1). Excavated soil was stockpiled on-site, pending final disposition.

Four (4) soil samples (Stockpile 'A', N Exc Floor, N Exc N Wall, and N Exc W Wall) were also submitted to Cardinal Laboratories for analysis of chloride and TPH concentrations. Chloride concentrations ranged from 240 mg/Kg in soil sample N Exc W Wall to 2,320 mg/Kg in soil sample N Exc Floor. TPH concentrations ranged from less than the laboratory MDL in soil samples N Exc N Wall and N Exc W Wall to 178 mg/Kg in soil sample Stockpile 'A'. Soil represented by soil sample Stockpile 'A' was deemed suitable for use as backfill.

On February 28, 2011, seven (7) soil samples (S Exc Sec 1 Stockpile 'C', N Exc E Wall, N Exc S Wall, S Exc Sec 1 Floor, S Exc Sec 1 N Wall, S Exc Sec 1 S Wall, and S Exc Sec 1 E Wall) were submitted to Cardinal Laboratories for analysis of chloride and TPH concentrations. Chloride concentrations ranged from 32.0 mg/Kg in soil samples S Exc Sec 1 S Wall and S Exc Sec 1 E Wall to 288 mg/Kg in soil sample S Exc Sec 1 Stockpile 'C'. TPH concentrations ranged from less than the laboratory MDL for soil samples N Exc E Wall, N Exc S Wall, S Exc Sec 1 Floor, S Exc Sec 1 N Wall, S Exc Sec 1 S Wall, and S Exc Sec 1 E Wall to 148.1 mg/Kg in soil sample S Exc Sec 1 Stockpile 'C'. Soil represented by soil sample S Exc Sec 1 Stockpile 'C' was deemed suitable for use as backfill.

On March 1, 2011, based on results of laboratory analyses and field-screens, Section 1 of the South Excavation was backfilled in eighteen-inch (18") lifts, and excavation of Section 2 (S Exc Sec 2) commenced. Excavated soil was stockpiled on-site, pending final disposition.

On March 2, 2011, four (4) soil samples (S Exc Sec Stockpile D, S Exc Sec 2 Floor, S Exc Sec 2 N Wall, and S Exc Sec 2 S Wall) were submitted to Cardinal Laboratories for analysis of chloride and TPH concentrations. Chloride concentrations ranged from 16.0 mg/Kg in soil sample S Exc Sec 2 N Wall to 272 mg/Kg in soil sample S Exc Sec 2 Floor. TPH concentrations ranged from less than the laboratory MDL in soil samples S Exc Sec 2 N Wall and S Exc Sec 2 S Wall to 435.6 mg/Kg in soil sample S Exc Sec Stockpile D. Soil represented by soil sample S Exc Sec Stockpile D was deemed suitable for use as backfill.

On March 3, 2011, based on results of laboratory analyses and field-screens, Section 2 of the South Excavation was backfilled in eighteen-inch (18") lifts, and excavation of Section 3 (S Exc Sec 3) commenced. Excavated soil was stockpiled on-site, pending final disposition.

On March 4, 2011, two (2) soil samples (S Exc Sec 3 Stockpile and S Exc Sec 3 West Wall) were submitted to Cardinal Laboratories for analysis of chloride and TPH concentrations. Chloride concentrations ranged from 80.0 mg/Kg in soil sample S Exc Sec 3 West Wall to 112 mg/Kg in soil sample S Exc Sec 3 Stockpile. TPH concentrations ranged from less than the laboratory MDL in soil sample S Exc Sec 3 West Wall to 396.1 mg/Kg in soil sample S Exc Sec 3 Stockpile. Soil represented by soil sample S Exc Sec 3 Stockpile was deemed suitable for use as backfill.

From March 4 through March 7, 2011, based on results of laboratory analyses and field screens, the North Excavation and Section 3 of the South Excavation were backfilled in eighteen-inch (18") lifts, compacted, and contoured to fit the surrounding topography. Prior to backfilling, a 20 mil polyurethane liner was installed in the floor of the North Excavation at approximately five feet (5') bgs. Approximately six inches (6") of non-impacted pad sand was installed both above and below the liner to protect the liner from damage during installation and backfilling activities.

Reseeding of the Poker Lake Unit #158 Flowline release site with vegetation acceptable to the BLM will occur prior to the close of the 2011 calendar year.

4.0 QA/QC PROCEDURES

4.1 Soil Sampling

Soil samples were delivered to Cardinal Laboratories, Inc., of Hobbs, New Mexico, for TPH and/or chloride analyses using the methods described below:

- TPH concentrations in accordance with EPA Method SW-846 8015M
- Chloride concentrations in accordance with EPA Method 4500 Cl-B

4.2 Decontamination of Equipment

Cleaning of the sampling equipment was the responsibility of the environmental technician. Prior to use, and between each sample, the sampling equipment was cleaned with Liqui-Nox® detergent and rinsed with distilled water.

4.3 Laboratory Protocol

The laboratory was responsible for proper QA/QC procedures after signing the chain-of-custody form(s). These procedures were either transmitted with the laboratory reports or are on file at the laboratory.

5.0 SITE CLOSURE REQUEST

Remediation activities conducted at the Poker Lake Unit #158 Flowline release site met the objectives set forth in the *Remediation Summary and Risk-Based Closure Strategy* dated August 2010. Soil samples collected from the floors and sidewalls of the North and South Excavations were analyzed by an NMOCD-approved laboratory, and concentrations of TPH and chloride were below the remediation action levels established for the site. Based on these analytical results, Basin recommends BOPCO provide the NMOCD Artesia District Office and the BLM a copy of this *Remediation Summary & Risk-Based Site Closure Request* and request the NMOCD grant site closure to the Poker Lake Unit #158 Flowline release site.

6.0 LIMITATIONS

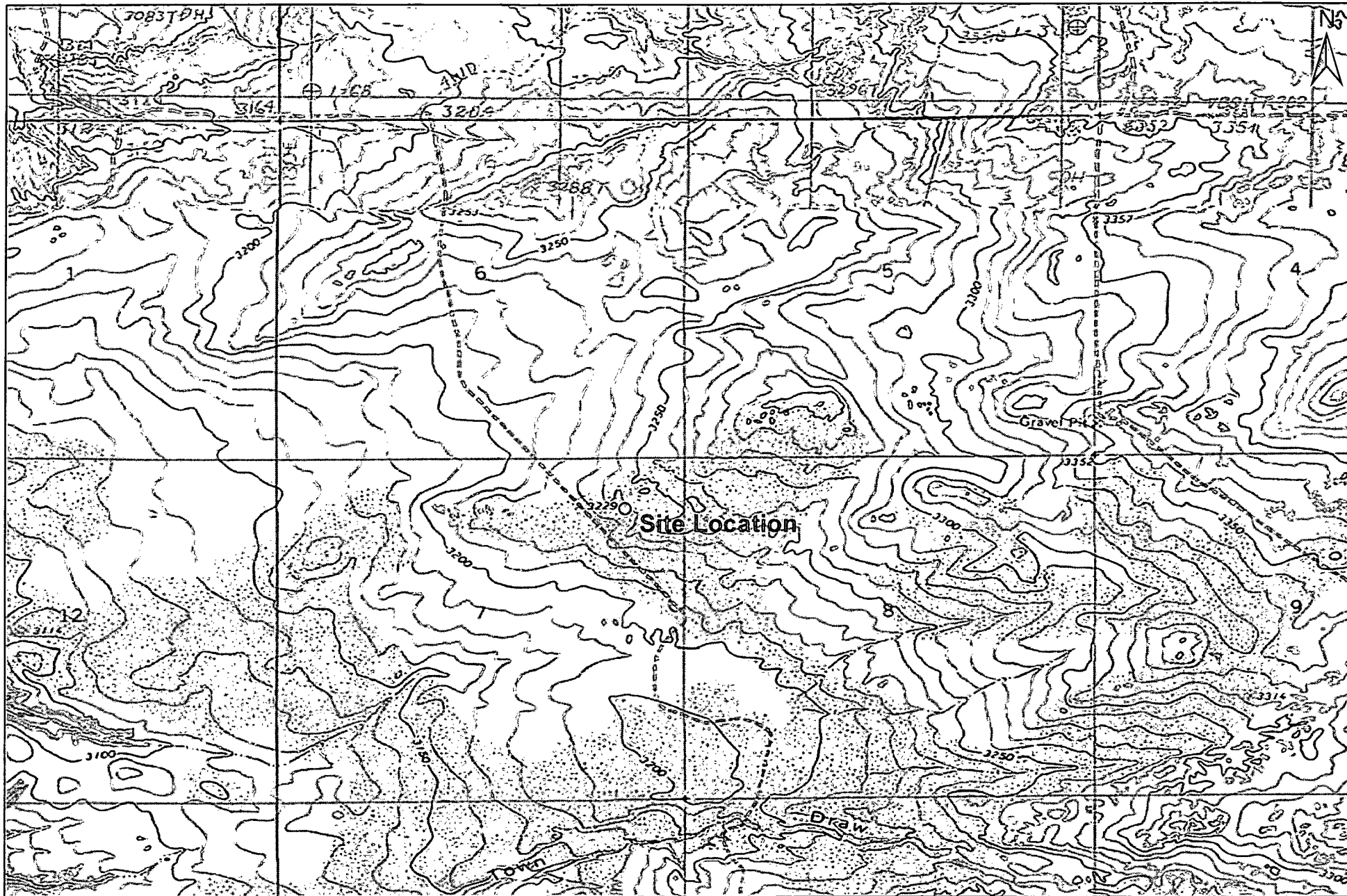
Basin Environmental Service Technologies, LLC, has prepared this *Remediation Summary & Risk-Based Site Closure Request* to the best of its ability. No other warranty, expressed or implied, is made or intended. Basin has examined and relied upon documents referenced in the report and on oral statements made by certain individuals. Basin has not conducted an independent examination of the facts contained in referenced materials and statements. Basin has presumed the genuineness of these documents and statements and that the information provided therein is true and accurate. Basin has prepared this report in a professional manner, using the degree of skill and care exercised by similar environmental consultants. Basin notes that the facts and conditions referenced in this report may change over time, and the conclusions and recommendations set forth herein are applicable only to the facts and conditions as described at the time of this report.

This report has been prepared for the benefit of BOPCO, LP. The information contained in this report, including all exhibits and attachments, may not be used by any other party without the express consent of Basin Environmental Service Technologies, LLC, and/or BOPCO, LP.

7.0 DISTRIBUTION:

- Copy 1: Mike Bratcher
New Mexico Energy, Minerals and Natural Resources Department
Oil Conservation Division (District 2)
1301 E. Grand Avenue
Artesia, NM 88210
- Copy 2: James Amos
Bureau of Land Management
602 E. Greene Street
Carlsbad, NM 88220
- Copy 3: Tony Savoie
BOPCO, LP
522 W. Mermod, Suite 704
Carlsbad, NM 88220
- Copy 4: Basin Environmental Service Technologies, LLC
P.O. Box 301
Lovington, NM 88260

Figures




1,000 500 0 1,000 2,000

 Distance in Feet

Figure 1
Site Location Map
BOPCO, LP
Poker Lake Unit #158 Flowline
Eddy County, New Mexico



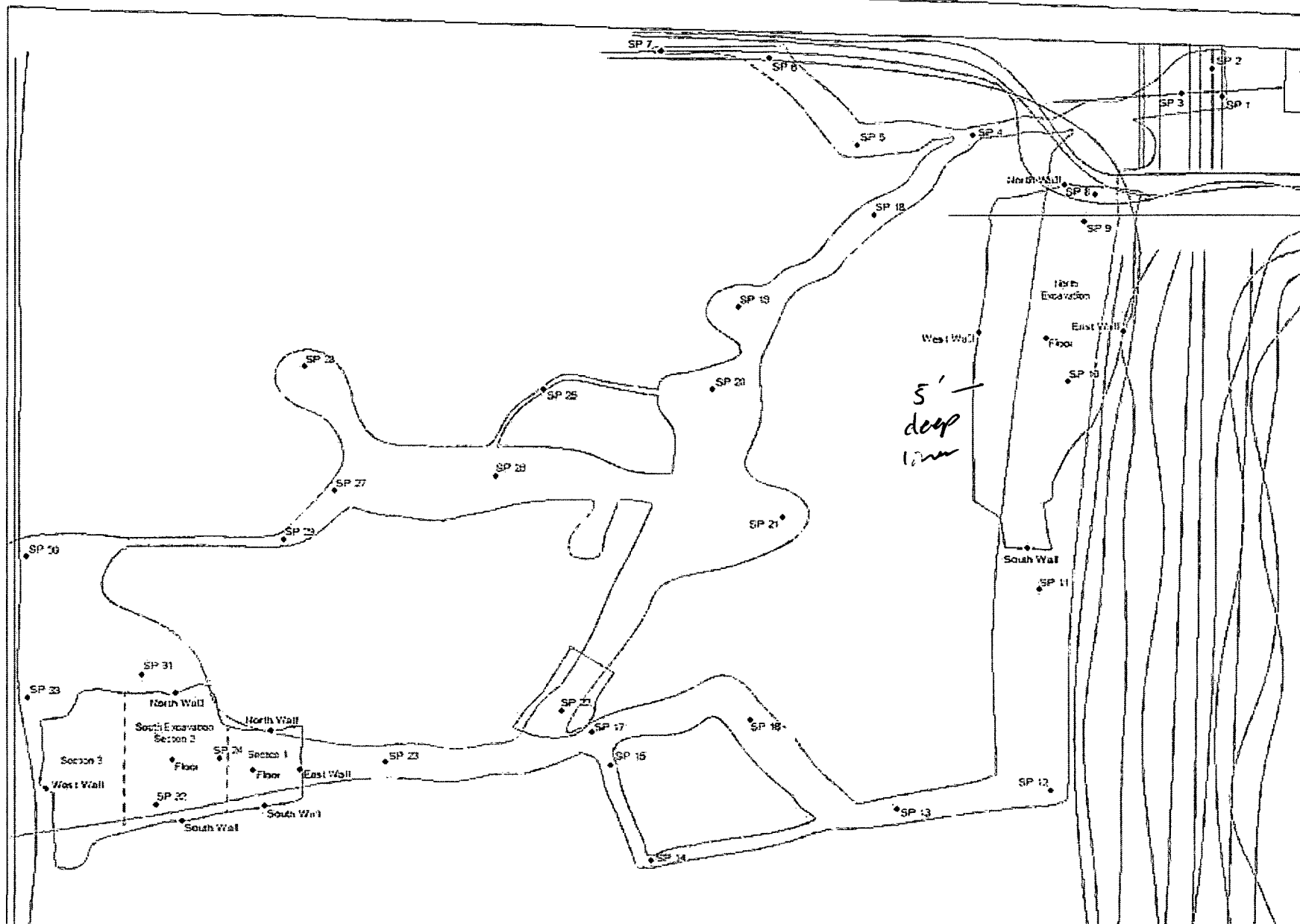
Basin Environmental Service Technologies, LLC
 3100 Plains Hwy.
 Lovington, NM 88260

Drawn By: BJA

Checked By: BRB

June 8, 2011

Scale: 1" = 2000'



Legend:

- Excavation Extent
- Sample Location
- Pipeline
- Run-off Area

Figure 2
Site & Sample Location Map
BOPCO, LP
Poker Lake Unit #158 Flowline
Eddy County, New Mexico



Basin Environmental Service Technologies, LLC
 3400 Plains Hwy.
 Lovington, NM 88260

Drawn By: BJA
 June 9, 2011

Checked By: BRE
 Scale: 1" = 45'

Tables

**TABLE 1
CONCENTRATIONS OF TPH & CHLORIDES IN SOIL**

**BOPCO, LP
POKER LAKE UNIT #158 FLOWLINE
EDDY COUNTY, NEW MEXICO**

SAMPLE LOCATION	SAMPLE DEPTH (BGS)	SAMPLE DATE	SOIL STATUS	METHOD: 8015M			TOTAL TPH C ₆ -C ₃₅ (mg/Kg)	4500 CI-B
				GRO C ₆ -C ₁₂ (mg/Kg)	DRO C ₁₂ -C ₂₈ (mg/Kg)	ORO C ₂₈ -C ₃₅ (mg/Kg)		CHLORIDE (mg/Kg)
Sample 1 @ Surface	Surface	07/14/10	In-Situ	-	-	-	-	48
Sample 1 @ 1'	1 Foot	07/14/10	In-Situ	-	-	-	-	80
Sample 2 @ 6"	6 Inches	07/14/10	In-Situ	1650	4280	18.2	5,948	80
Sample 2 @ 4'	4 Feet	07/15/10	In-Situ	-	-	-	-	912
Sample 2 @ 8'	8 Feet	07/15/10	In-Situ	<10.0	85.1	27.3	112	5,040
Sample 3 @ 1'	1 Foot	07/14/10	In-Situ	-	-	-	-	64
Sample 4 @ 1'	1 Foot	07/14/10	In-Situ	-	-	-	-	48
Sample 5 @ 1'	1 Foot	07/14/10	In-Situ	-	-	-	-	<16
Sample 6 @ 1'	1 Foot	07/14/10	In-Situ	-	-	-	-	<16
Sample 8 @ 6"	6 Inches	07/14/10	In-Situ	1660	7500	67	9,227	208
Sample 8 @ 4'	4 Feet	07/16/10	In-Situ	69.6	491	<10.0	561	4,960
Sample 8 @ 8'	8 Feet	07/16/10	In-Situ	25.6	282	<10.0	308	28,400
Sample 9 @ 1'	1 Foot	07/14/10	In-Situ	-	-	-	-	1,070
Sample 9 @ 3'	3 Feet	07/15/10	In-Situ	-	-	-	-	10,500
Sample 9 @ 5'	5 Feet	07/16/10	In-Situ	-	-	-	-	5,360
Sample 12 @ 1'	1 Foot	07/14/10	In-Situ	-	-	-	-	32
Sample 18 @ 1'	1 Foot	07/14/10	In-Situ	<10.0	<10.0	<10.0	<10.0	32
Sample 18 @ 3'	3 Feet	07/16/10	In-Situ	-	-	-	-	32
Sample 22 @ 6"	6 Inches	07/14/10	In-Situ	-	-	-	-	416
Sample 22 @ 4'	4 Feet	07/16/10	In-Situ	-	-	-	-	528
Sample 22 @ 8'	8 Feet	07/16/10	In-Situ	-	-	-	-	1,060
Sample 24 @ 6"	6 Inches	07/15/10	In-Situ	<50.0	4270	<50.0	4,270	496
Sample 24 @ 4'	4 Feet	07/16/10	In-Situ	-	-	-	-	576
Sample 24 @ 8'	8 Feet	07/16/10	In-Situ	-	-	-	-	3,200
Sample 25 @ 1'	1 Foot	07/15/10	In-Situ	-	-	-	-	<16
Sample 27 @ 1'	1 Foot	07/15/10	In-Situ	-	-	-	-	<16
Sample 30 @ 1'	1 Foot	07/15/10	In-Situ	-	-	-	-	<16
Sample 32 @ 1'	1 Foot	07/15/10	In-Situ	-	-	-	-	<16
Sample 33 @ 1'	1 Foot	07/15/10	In-Situ	-	-	-	-	32

TABLE 1
CONCENTRATIONS OF TPH & CHLORIDES IN SOIL

BOPCO, LP
POKER LAKE UNIT #158 FLOWLINE
EDDY COUNTY, NEW MEXICO

SAMPLE LOCATION	SAMPLE DEPTH (BGS)	SAMPLE DATE	SOIL STATUS	METHOD: 8015M			TOTAL TPH C ₆ -C ₃₅ (mg/Kg)	4500 CI-B
				GRO C ₆ -C ₁₂ (mg/Kg)	DRO C ₁₂ -C ₂₈ (mg/Kg)	ORO C ₂₈ -C ₃₅ (mg/Kg)		CHLORIDE (mg/Kg)
Stockpile 'A'	N/A	2/25/2011	In-situ	<10	151	27.0	178	512
N Exc Floor	5'	2/25/2011	In-situ	<10	14.0	<10	14.0	2,320
N Exc N Wall	5'	2/25/2011	In-situ	<10	<10	<10	<10	304
N Exc W Wall	5'	2/25/2011	In-situ	<10	<10	<10	<10	240
N Exc E Wall	5'	2/28/2011	In-situ	<10	<10	<10	<10	240
N Exc S Wall	5'	2/28/2011	In-situ	<10	<10	<10	<10	192
S Exc Sec 1 Stockpile 'C'	N/A	2/28/2011	In-situ	<10	128	20.1	148.1	288
S Exc Sec 1 Floor	5'	2/28/2011	In-situ	<10	<10	<10	<10	160
S Exc Sec 1 N Wall	5'	2/28/2011	In-situ	<10	<10	<10	<10	48.0
S Exc Sec 1 S Wall	5'	2/28/2011	In-situ	<10	<10	<10	<10	32.0
S Exc Sec 1 E Wall	4'	2/28/2011	In-situ	<10	<10	<10	<10	32.0
S Exc Sec Stockpile D	N/A	3/2/2011	In-situ	<10	367	68.6	435.6	96.0
S Exc Sec 2 Floor	5'	3/2/2011	In-situ	<10	304	50.7	354.7	272
S Exc Sec 2 N Wall	5'	3/2/2011	In-situ	<10	<10	<10	<10	16.0
S Exc Sec 2 S Wall	5'	3/2/2011	In-situ	<10	<10	<10	<10	32.0
S Exc Sec 3 Stockpile	N/A	3/4/2011	In-situ	22.0	320	54.1	396.1	112
S Exc Sec 3 West Wall	5'	3/4/2011	In-situ	<10	<10	<10	<10	80.0

**TABLE 2
FIELD-TEST RESULTS**

**BOPCO, LP
POKER LAKE UNIT #158 FLOWLINE
EDDY COUNTY, NEW MEXICO**

SAMPLE LOCATION	SAMPLE DEPTH (Below Ground Surface)	SAMPLE DATE	CHLORIDE (mg/Kg)	PID (mg/Kg)
<i>Sample 1 @ Surface</i>	Surface	7/14/2010	<128	37.9
Sample 1 @ 6"	6"	7/14/2010	<128	22.5
<i>Sample 1 @ 1'</i>	1'	7/14/2010	<128	42.1
Sample 2 @ Surface	Surface	7/14/2010	<128	82.0
<i>Sample 2 @ 6"</i>	6"	7/14/2010	<128	117.0
Sample 2 @ 1'	1'	7/15/2010	1,082	32.0
Sample 2 @ 2'	2'	7/15/2010	>2468	34.8
Sample 2 @ 3'	3'	7/15/2010	880	6.9
<i>Sample 2 @ 4'</i>	4'	7/15/2010	356	22.4
Sample 2 @ 5'	5'	7/16/2010	1,664	25.9
Sample 2 @ 6'	6'	7/16/2010	924	42.5
Sample 2 @ 7'	7'	7/16/2010	2,244	79.0
<i>Sample 2 @ 8'</i>	8'	7/18/2010	>2535	236.0
Sample 3 @ 6"	6"	7/14/2010	<128	9.8
<i>Sample 3 @ 1'</i>	1'	7/14/2010	<112	21.0
Sample 4 @ 6"	6"	7/14/2010	<128	68.1
<i>Sample 4 @ 1'</i>	1'	7/14/2010	<112	16.0
Sample 5 @ 6"	6"	7/14/2010	<112	29.1
<i>Sample 5 @ 1'</i>	1'	7/14/2010	<112	8.4
Sample 6 @ 6"	6"	7/14/2010	<112	19.8
<i>Sample 6 @ 1'</i>	1'	7/14/2010	<112	3.9
Sample 7 @ 6"	6"	7/14/2010	<112	13.8
<i>Sample 7 @ 1'</i>	1'	7/14/2010	<112	29.1
<i>Sample 8 @ 6"</i>	6"	7/14/2010	152	948.0
Sample 8 @ 1'	1'	7/14/2010	180	1,200.0
Sample 8 @ 2'	2'	7/16/2010	320	156.0
Sample 8 @ 3'	3'	7/16/2010	>2532	74.7
<i>Sample 8 @ 4'</i>	4'	7/16/2010	>2532	255.0
Sample 8 @ 5'	5'	7/16/2010	>2532	102.0
Sample 8 @ 6'	6'	7/16/2010	>2532	40.1
Sample 8 @ 7'	7'	7/16/2010	>2532	215.0
<i>Sample 8 @ 8'</i>	8'	7/16/2010	>2532	219.0
Sample 9 @ 6"	6"	7/14/2010	<112	30.0
<i>Sample 9 @ 1'</i>	1'	7/14/2010	1,256	36.3
Sample 9 @ 2'	2'	7/15/2010	>2468	43.1
<i>Sample 9 @ 3'</i>	3'	7/15/2010	>2468	4.7
Sample 9 @ 4'	4'	7/15/2010	>2468	10.3
<i>Sample 9 @ 5'</i>	5'	7/16/2010	>2532	59.8

**TABLE 2
FIELD-TEST RESULTS**

**BOPCO, LP
POKER LAKE UNIT #158 FLOWLINE
EDDY COUNTY, NEW MEXICO**

SAMPLE LOCATION	SAMPLE DEPTH (Below Ground Surface)	SAMPLE DATE	CHLORIDE (mg/Kg)	PID (mg/Kg)
Sample 10 @ 6"	6"	7/14/2010	<128	27.0
Sample 10 @ 1'	1'	7/14/2010	<128	96.0
Sample 11 @ 6"	6"	7/14/2010	<128	117.0
Sample 11 @ 1'	1'	7/14/2010	188	26.5
Sample 12 @ 6"	6"	7/14/2010	<128	6.5
Sample 12 @ 1'	1'	7/14/2010	<128	6.9
Sample 13 @ 6"	6"	7/14/2010	<128	62.0
Sample 13 @ 1'	1'	7/14/2010	<128	13.2
Sample 14 @ 6"	6"	7/14/2010	<128	52.6
Sample 14 @ 1'	1'	7/14/2010	<128	1.7
Sample 15 @ 6"	6"	7/14/2010	<128	6.3
Sample 15 @ 1'	1'	7/14/2010	<128	3.9
Sample 16 @ 6"	6"	7/14/2010	<128	22.5
Sample 16 @ 1'	1'	7/14/2010	<128	8.4
Sample 17 @ 6"	6"	7/14/2010	<128	67.0
Sample 17 @ 1'	1'	7/14/2010	<128	7.9
Sample 18 @ 6"	6"	7/14/2010	<128	10.5
Sample 18 @ 1'	1'	7/14/2010	<128	185.0
Sample 18 @ 2'	2'	7/16/2010	<128	23.3
Sample 18 @ 3'	3'	7/16/2010	<128	71.3
Sample 19 @ 6"	6"	7/14/2010	<128	34.8
Sample 19 @ 1'	1'	7/14/2010	<128	46.0
Sample 20 @ 6"	6"	7/14/2010	1,636	101.0
Sample 20 @ 1'	1'	7/14/2010	<128	54.8
Sample 21 @ 6"	6"	7/14/2010	<128	3.4
Sample 21 @ 1'	1'	7/14/2010	<128	25.8
Sample 22 @ 6"	6"	7/14/2010	248	63.0
Sample 22 @ 1'	1'	7/14/2010	440	53.9
Sample 22 @ 2'	2'	7/16/2010	520	12.0
Sample 22 @ 3'	3'	7/16/2010	<128	133.0
Sample 22 @ 4'	4'	7/16/2010	324	77.8
Sample 22 @ 5'	5'	7/16/2010	324	45.1
Sample 22 @ 6'	6'	7/16/2010	368	17.0
Sample 22 @ 7'	7'	7/16/2010	1,556	24.8
Sample 22 @ 8'	8'	7/16/2010	1,084	35.8
Sample 23 @ 6"	6"	7/15/2010	<112	9.6
Sample 23 @ 1'	1'	7/15/2010	<112	4.7

**TABLE 2
FIELD-TEST RESULTS**

**BOPCO, LP
POKER LAKE UNIT #158 FLOWLINE
EDDY COUNTY, NEW MEXICO**

SAMPLE LOCATION	SAMPLE DEPTH (Below Ground Surface)	SAMPLE DATE	CHLORIDE (mg/Kg)	PID (mg/Kg)
Sample 24 @ 6"	6"	7/15/2010	440	97.0
Sample 24 @ 1'	1'	7/15/2010	536	33.7
Sample 24 @ 2'	2'	7/16/2010	368	20.9
Sample 24 @ 3'	3'	7/16/2010	212	52.3
Sample 24 @ 4'	4'	7/16/2010	468	25.0
Sample 24 @ 5'	5'	7/16/2010	1,556	8.0
Sample 24 @ 6'	6'	7/16/2010	1,668	7.7
Sample 24 @ 7'	7'	7/16/2010	2,052	48.9
Sample 24 @ 8'	8'	7/16/2010	>2532	8.3
Sample 25 @ 6"	6"	7/15/2010	<112	38.6
Sample 25 @ 1'	1'	7/15/2010	<112	23.0
Sample 26 @ 6"	6"	7/15/2010	<112	9.8
Sample 26 @ 1'	1'	7/15/2010	<112	35.3
Sample 27 @ 6"	6"	7/15/2010	<112	16.0
Sample 27 @ 1'	1'	7/15/2010	<112	5.2
Sample 28 @ 6"	6"	7/15/2010	<112	27.0
Sample 28 @ 1'	1'	7/15/2010	<112	36.0
Sample 29 @ 6"	6"	7/15/2010	<112	5.8
Sample 29 @ 1'	1'	7/15/2010	<112	8.2
Sample 30 @ 6"	6"	7/15/2010	<112	5.2
Sample 30 @ 1'	1'	7/15/2010	<112	19.0
Sample 31 @ 6"	6"	7/15/2010	<112	15.1
Sample 31 @ 1'	1'	7/15/2010	<112	31.5
Sample 32 @ 6"	6"	7/15/2010	<112	42.6
Sample 32 @ 1'	1'	7/15/2010	<112	31.0
Sample 33 @ 6"	6"	7/15/2010	<112	6.2
Sample 33 @ 1'	1'	7/15/2010	<112	14.3
Sample #24 Floor	6'	2/15/2011	2,288	-
Sample #24 North Wall	6'	2/15/2011	1,476	-
Sample #24 South Wall	6'	2/15/2011	748	-
Sample #24 East Wall	6'	2/15/2011	688	-
Sample #2 (Road Crossing)	4'	2/17/2011	256	-
Sample #9	6'	2/17/2011	4,444	-

TABLE 2
FIELD-TEST RESULTS

BOPCO, LP
POKER LAKE UNIT #158 FLOWLINE
EDDY COUNTY, NEW MEXICO

SAMPLE LOCATION	SAMPLE DEPTH (Below Ground Surface)	SAMPLE DATE	CHLORIDE (mg/Kg)	PID (mg/Kg)
Sample #22 @ 10'	10'	2/21/2011	1,836	-
Sample #22 @ 12'	12'	2/21/2011	808	-
Sample #22 @ 14'	14'	2/21/2011	532	-
Sample #24 @ 8'	8'	2/21/2011	1,392	-
Sample #24 @ 10'	10'	2/21/2011	3,164	-
Sample #24 @ 12'	12'	2/21/2011	5,232	-
Sample #24 @ 14'	14'	2/21/2011	3,452	-

Appendices

Appendix A

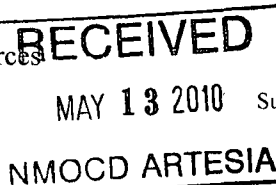
Release Notification &

Corrective Action (Form C-141)

District I
1625 N. French Dr., Hobbs, NM 88240
District II
1301 W. Grand Avenue, Artesia, NM 88210
District III
1000 Rio Brazos Road, Aztec, NM 87410
District IV
1220 S. St. Francis Dr., Santa Fe, NM 87505

State of New Mexico
Energy Minerals and Natural Resources

Oil Conservation Division
1220 South St. Francis Dr.
Santa Fe, NM 87505



Form C-141
Revised October 10, 2003

Submit 2 Copies to appropriate
District Office in accordance
with Rule 116 on back
side of form

30-015-31690
NKMW 1035747007

Release Notification and Corrective Action

OPERATOR

☒ Initial Report ☐ Final Report

Name of Company BOPCO, L.P.	260737	Contact Tony Savoie
Address 522 W. Mermod, Suite 704 Carlsbad, N.M. 88220		Telephone No. 432-556-8730
Facility Name Poker Lake Unit 158 Tank Battery		Facility Type E&P

Surface Owner Federal	Mineral Owner Federal	Lease No.
-----------------------	-----------------------	-----------

LOCATION OF RELEASE

Unit Letter A	Section 7	Township 24S	Range 30E	Feet from the	North/South Line	Feet from the	East/West Line	County Eddy
------------------	--------------	-----------------	--------------	---------------	------------------	---------------	----------------	----------------

Latitude N 32.237274 Longitude W 103.914835

NATURE OF RELEASE

Type of Release: Produced water and crude oil	Volume of Release: 5 Bbls of Produced water and 10 Bbls of Crude oil	Volume Recovered: none
Source of Release: a 2 3/8" flow line under the facility entrance road	Date and Hour of Occurrence Unknown	Date and Hour of Discovery 5/8/10 10:43 a.m.
Was Immediate Notice Given? <input checked="" type="checkbox"/> Yes <input type="checkbox"/> No <input type="checkbox"/> Not Required	If YES, To Whom? Randy with the NMOCD	
By Whom? Tony Savoie	Date and Hour 5/8/10 12:24 p.m.	
Was a Watercourse Reached? <input type="checkbox"/> Yes <input checked="" type="checkbox"/> No	If YES, Volume Impacting the Watercourse.	

If a Watercourse was Impacted, Describe Fully.*

Describe Cause of Problem and Remedial Action Taken.* The flow line delivering produced fluid from the well to the tank battery developed a leak; the temporary repair clamp was placed on the affected area.

Describe Area Affected and Cleanup Action Taken.* The released fluid affected approximately 250 sq. ft of pasture land and approximately 800 sq. ft. of caliche entrance road. The oil saturated soil in the pasture measured approximately 125 ft. long by 2 ft. wide, approximately 6 cubic yards of the saturated soil was removed with shovels and a backhoe and stockpiled on the well pad location
The Site remediation for the produced water and crude oil spill will follow the NMOCD guidelines for leaks and spills.

I hereby certify that the information given above is true and complete to the best of my knowledge and understand that pursuant to NMOCD rules and regulations all operators are required to report and/or file certain release notifications and perform corrective actions for releases which may endanger public health or the environment. The acceptance of a C-141 report by the NMOCD marked as "Final Report" does not relieve the operator of liability should their operations have failed to adequately investigate and remediate contamination that pose a threat to ground water, surface water, human health or the environment. In addition, NMOCD acceptance of a C-141 report does not relieve the operator of responsibility for compliance with any other federal, state, or local laws and/or regulations.

Signature: Tony Savoie	OIL CONSERVATION DIVISION	
Printed Name: Tony Savoie	Approved by District Supervisor: Signed By Mike Brannan	
Title: Waste Mgmt. & Remediation Specialist	Approval Date: 3/3/11	Expiration Date:
E-mail Address: TASavoie@BassPet.com	Conditions of Approval: Remediation per OCD Rules & Guidelines. SUBMIT REMEDIATION	Attached <input type="checkbox"/>
Date: 5/13/10	Phone: 432-556-8730	

* Attach Additional Sheets If Necessary

PROPOSAL NOT LATER THAN:

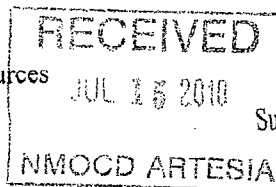
4/3/11

2 RP-539

District I
1625 N. French Dr., Hobbs, NM 88240
District II
1301 W. Grand Avenue, Artesia, NM 88210
District III
1000 Rio Brazos Road, Aztec, NM 87410
District IV
1220 S. St. Francis Dr., Santa Fe, NM 87505

State of New Mexico
Energy Minerals and Natural Resources

Oil Conservation Division
1220 South St. Francis Dr.
Santa Fe, NM 87505



Form C-141
Revised October 10, 2003

Submit 2 Copies to appropriate
District Office in accordance
with Rule 116 on back
side of form

Release Notification and Corrective Action

OPERATOR

☒ Initial Report ☐ Final Report

Name of Company BOPCO, L.P.	Contact Tony Savoie
Address 522 W. Mermod, Suite 704 Carlsbad, N.M. 88220	Telephone No. 432-556-8730
Facility Name Poker Lake Unit 158 Tank Battery	Facility Type E&P

Surface Owner Federal	Mineral Owner Federal	Lease No.
-----------------------	-----------------------	-----------

LOCATION OF RELEASE

Unit Letter A	Section 7	Township 24S	Range 30E	Feet from the	North/South Line	Feet from the	East/West Line	County Eddy
------------------	--------------	-----------------	--------------	---------------	------------------	---------------	----------------	----------------

Latitude N 32.237274 Longitude W 103.914835

NATURE OF RELEASE

Type of Release: Produced water and crude oil	Volume of Release: 10 Bbls of Produced water and 10 Bbls of Crude oil	Volume Recovered: none
Source of Release: a 2 3/8" flow line under the facility entrance road	Date and Hour of Occurrence Unknown	Date and Hour of Discovery 7/5/10 8:00 a.m.
Was Immediate Notice Given? <input checked="" type="checkbox"/> Yes <input type="checkbox"/> No <input type="checkbox"/> Not Required	If YES, To Whom? Left message on NMOCD emergency number.	
By Whom? Tony Savoie	Date and Hour 7/5/10 10:30 a.m.	
Was a Watercourse Reached? <input type="checkbox"/> Yes <input checked="" type="checkbox"/> No	If YES, Volume Impacting the Watercourse.	

If a Watercourse was Impacted, Describe Fully.*

Describe Cause of Problem and Remedial Action Taken.* The flow line delivering produced fluid from the well to the tank battery developed a leak; the temporary repair clamp was placed on the affected area.

Describe Area Affected and Cleanup Action Taken.* The released fluid affected approximately 600 sq. ft of pasture land and approximately 200 sq. ft. of caliche entrance road. The affected area in the pasture measured approximately 300 ft. long by 2 ft. wide. This spill traveled along the same pathway as a spill reported on 5/8/10, it also connected to an apparent historical spill area. The area was mapped out and samples were collected on 7/14/10 to determine total vertical and horizontal extent.

The Site remediation for the produced water and crude oil spill will follow the NMOCD guidelines for leaks and spills.

I hereby certify that the information given above is true and complete to the best of my knowledge and understand that pursuant to NMOCD rules and regulations all operators are required to report and/or file certain release notifications and perform corrective actions for releases which may endanger public health or the environment. The acceptance of a C-141 report by the NMOCD marked as "Final Report" does not relieve the operator of liability should their operations have failed to adequately investigate and remediate contamination that pose a threat to ground water, surface water, human health or the environment. In addition, NMOCD acceptance of a C-141 report does not relieve the operator of responsibility for compliance with any other federal, state, or local laws and/or regulations.

OIL CONSERVATION DIVISION

Signature: <i>Tony Savoie</i>	Approved by District Supervisor:		
Printed Name: Tony Savoie			
Title: Waste Mgmt. & Remediation Specialist	Approval Date:	Expiration Date:	
E-mail Address: TASavoie@BassPet.com	Conditions of Approval:		Attached <input type="checkbox"/>
Date: 7/14/10	Phone: 432-556-8730		

* Attach Additional Sheets If Necessary

District I
1625 N. French Dr., Hobbs, NM 88240
District II
1301 W. Grand Avenue, Artesia, NM 88210
District III
1000 Rio Brazos Road, Aztec, NM 87410
District IV
1220 S. St. Francis Dr., Santa Fe, NM 87505

State of New Mexico
Energy Minerals and Natural Resources

Oil Conservation Division
1220 South St. Francis Dr.
Santa Fe, NM 87505

Form C-141
Revised October 10, 2003

Submit 2 Copies to appropriate
District Office in accordance
with Rule 116 on back
side of form

Release Notification and Corrective Action

OPERATOR

Initial Report **X** Final Report

Name of Company	BOPCO, LP	Contact	Tony Savoie
Address	522 W. Mermod, Suite 704, Carlsbad, NM 88220	Telephone No.	(432)556-8730
Facility Name	Poker Lake Unit #158 Tank Battery	Facility Type	E&P

Surface Owner	Federal	Mineral Owner	Federal	Lease No.	
---------------	---------	---------------	---------	-----------	--

LOCATION OF RELEASE

Unit Letter	Section	Township	Range	Feet from the	North/South Line	Feet from the	East/West Line	County
A	7	24S	30E					Eddy

Latitude 32.237274° North

Longitude 103.914835° West

NATURE OF RELEASE

Type of Release	Produced water and crude oil	Volume of Release	5 bbls of produced water and 10 bbls of crude oil	Volume Recovered	None
Source of Release	A 2 3/8" flow line under the facility entrance road	Date and Hour of Occurrence	Unknown	Date and Hour of Discovery	5/8/2010, 10:43 AM
Was Immediate Notice Given?	<input checked="" type="checkbox"/> Yes <input type="checkbox"/> No Not Required	If YES, To Whom?	Randy with the NMOCD		
By Whom?	Tony Savoie	Date and Hour	5/8/10, 12:24 PM		
Was a Watercourse Reached?	<input type="checkbox"/> Yes <input checked="" type="checkbox"/> No	If YES, Volume Impacting the Watercourse.			

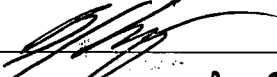
If a Watercourse was Impacted, Describe Fully.*

Describe Cause of Problem and Remedial Action Taken.* The flow line delivering produced fluid from the well to the tank battery developed a leak. A temporary repair clamp was placed on the affected area.

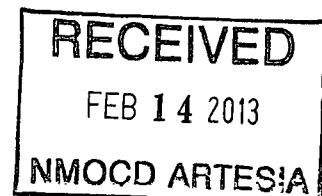
Describe Area Affected and Cleanup Action Taken.* The released fluid affected approximately 250 sq. ft of pasture land and approximately 800 sq.ft. of caliche entrance road. The oil-saturated soil in the pasture measured approximately 125 ft. long by 2 ft. wide. Following initial response activities, the release was remediated as per NMOCD approval. Please reference the attached *Remediation Summary & Risk-Based Site Closure Request* for details of remediation activities and laboratory analytical results from confirmation soil samples.

I hereby certify that the information given above is true and complete to the best of my knowledge and understand that pursuant to NMOCD rules and regulations all operators are required to report and/or file certain release notifications and perform corrective actions for releases, which may endanger public health or the environment. The acceptance of a C-141 report by the NMOCD marked as "Final Report" does not relieve the operator of liability should their operations have failed to adequately investigate and remediate contamination that pose a threat to ground water, surface water, human health or the environment. In addition, NMOCD acceptance of a C-141 report does not relieve the operator of responsibility for compliance with any other federal, state, or local laws and/or regulations.

OIL CONSERVATION DIVISION

Signature: 	Approved by District Supervisor:		
Printed Name: <u>Ben S. Argujo</u> (agent of BOPCO, LP)			
Title: <u>Project Manager, Basin Environmental</u>	Approval Date:	Expiration Date:	
E-mail Address: <u>TASavoie@BassPet.com</u> <u>bjargujo@bassenv.com</u>	Conditions of Approval:		
Date: <u>2/14/13</u>	Phone: (432)556-8730		

(506)549-9597



District I
1625 N. French Dr., Hobbs, NM 88240
District II
1301 W. Grand Avenue, Artesia, NM 88210
District III
1000 Rio Brazos Road, Aztec, NM 87410
District IV
1220 S. St. Francis Dr., Santa Fe, NM 87505

State of New Mexico
Energy Minerals and Natural Resources

Oil Conservation Division
1220 South St. Francis Dr.
Santa Fe, NM 87505

Form C-141
Revised October 10, 2003

Submit 2 Copies to appropriate
District Office in accordance
with Rule 116 on back
side of form

RECEIVED

FEB 14 2013

NMOCD ARTESIA

Release Notification and Corrective Action

OPERATOR

Initial Report ☐ Final Report ☒

Name of Company	BOPCO, LP	Contact	Tony Savoie
Address	522 W. Mermod, Suite 704, Carlsbad, NM 88220	Telephone No.	(432)556-8730
Facility Name	Poker Lake Unit #158 Tank Battery	Facility Type	E&P
Surface Owner	Federal	Mineral Owner	Federal
		Lease No.	

LOCATION OF RELEASE

Unit Letter	Section	Township	Range	Feet from the	North/South Line	Feet from the	East/West Line	County
A	7	24S	30E					Eddy

Latitude 32.237274° North

Longitude 103.914835° West

NATURE OF RELEASE

Type of Release	Produced water and crude oil	Volume of Release	10 bbls of produced water and 10 bbls of crude oil	Volume Recovered	None
Source of Release	A 2 3/8" flow line under the facility entrance road	Date and Hour of Occurrence	Unknown	Date and Hour of Discovery	7/5/2010, 8:00 AM
Was Immediate Notice Given?	X Yes No Not Required	If YES, To Whom?	Left message on NMOCD emergency number		
By Whom?	Tony Savoie	Date and Hour	7/5/10, 10:30 AM		
Was a Watercourse Reached?	<input type="checkbox"/> Yes X No	If YES, Volume Impacting the Watercourse.			

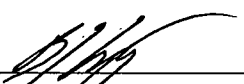
If a Watercourse was Impacted, Describe Fully.*

Describe Cause of Problem and Remedial Action Taken.* The flow line delivering produced fluid from the well to the tank battery developed a leak. A temporary repair clamp was placed on the affected area.

Describe Area Affected and Cleanup Action Taken.* The released fluid affected approximately 600 sq. ft of pasture land and approximately 200 sq.ft. of caliche entrance road. The affected area in the pasture measured approximately 300 ft. long by 2 ft. wide. This spill traveled along the same pathway as a spill reported on 5/8/10 and also connected to an apparent historical spill area. The area was mapped out, and samples were collected on 7/14/10 to determine total vertical and horizontal extent. Following initial response activities, the release was remediated as per NMOCD approval. Please reference the attached *Remediation Summary & Risk-Based Site Closure Request* for details of remediation activities and laboratory analytical results from confirmation soil samples.

I hereby certify that the information given above is true and complete to the best of my knowledge and understand that pursuant to NMOCD rules and regulations all operators are required to report and/or file certain release notifications and perform corrective actions for releases, which may endanger public health or the environment. The acceptance of a C-141 report by the NMOCD marked as "Final Report" does not relieve the operator of liability should their operations have failed to adequately investigate and remediate contamination that pose a threat to ground water, surface water, human health or the environment. In addition, NMOCD acceptance of a C-141 report does not relieve the operator of responsibility for compliance with any other federal, state, or local laws and/or regulations.

OIL CONSERVATION DIVISION

Signature:			
Printed Name:	Ben J. Arguizo (Agent of BOPCO, LP)		
Title:	Project Manager, Basin Environmental		
E-mail Address:	TASavoie@BassPet.com	Approval Date:	Expiration Date:
Date:	2/14/13	Phone:	(432)556-8730
Conditions of Approval:			

(806) 549-9597

Appendix B

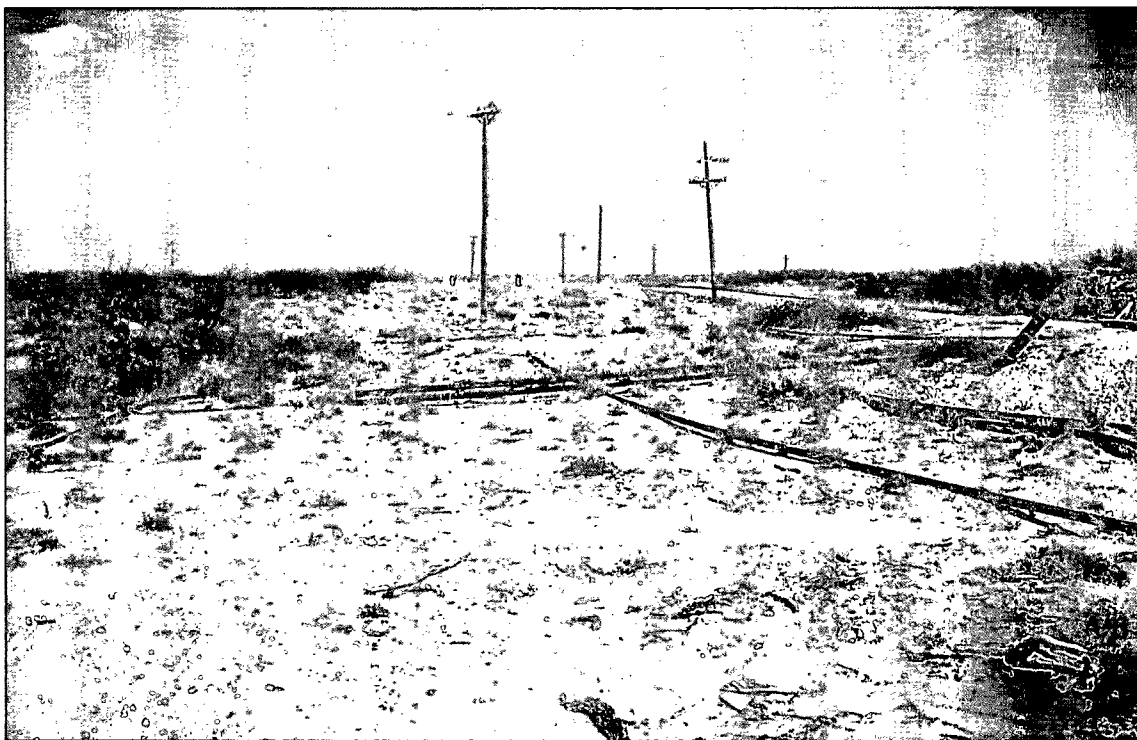
Photographs



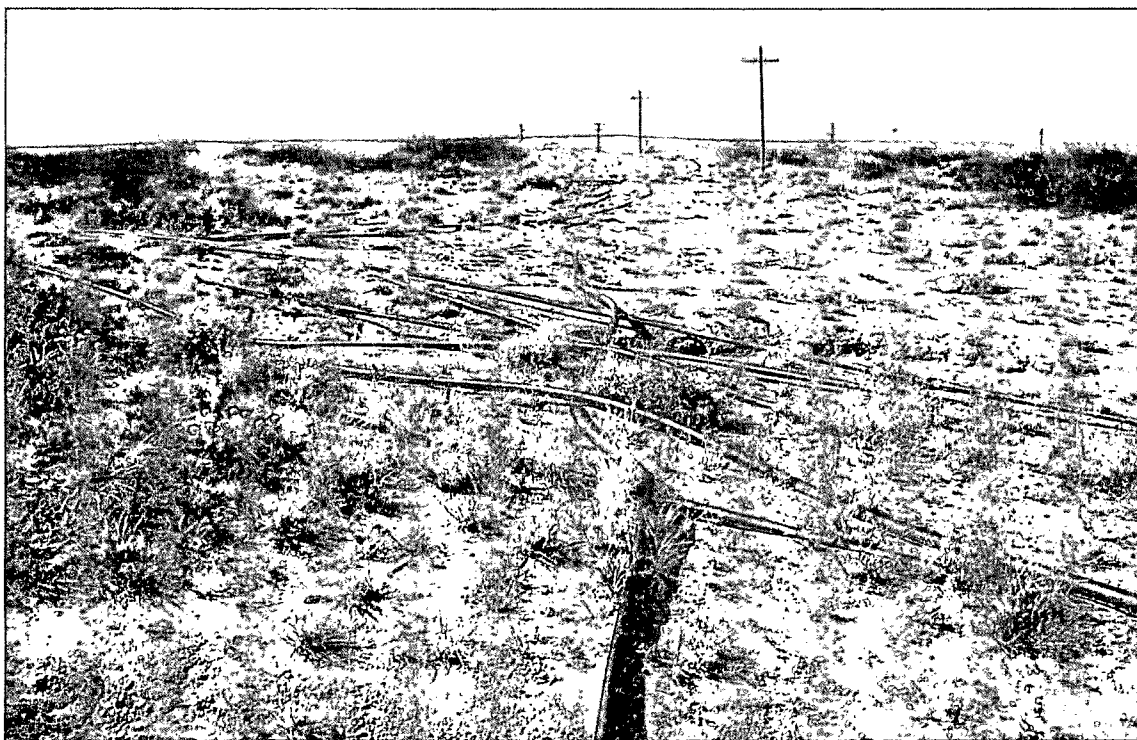
Poker Lake Unit #158 Flowline - Release Point



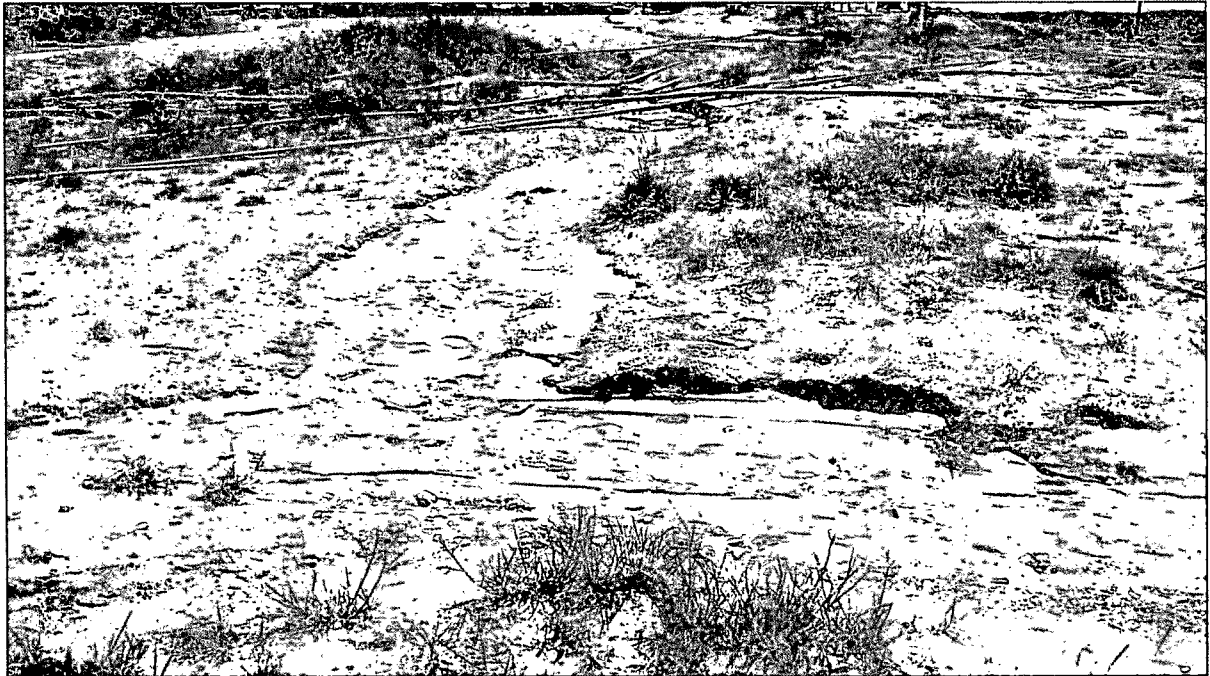
Poker Lake Unit #158 Flowline - Release Site (Facing East)



Poker Lake Unit #158 Flowline - Release Site (Facing West)



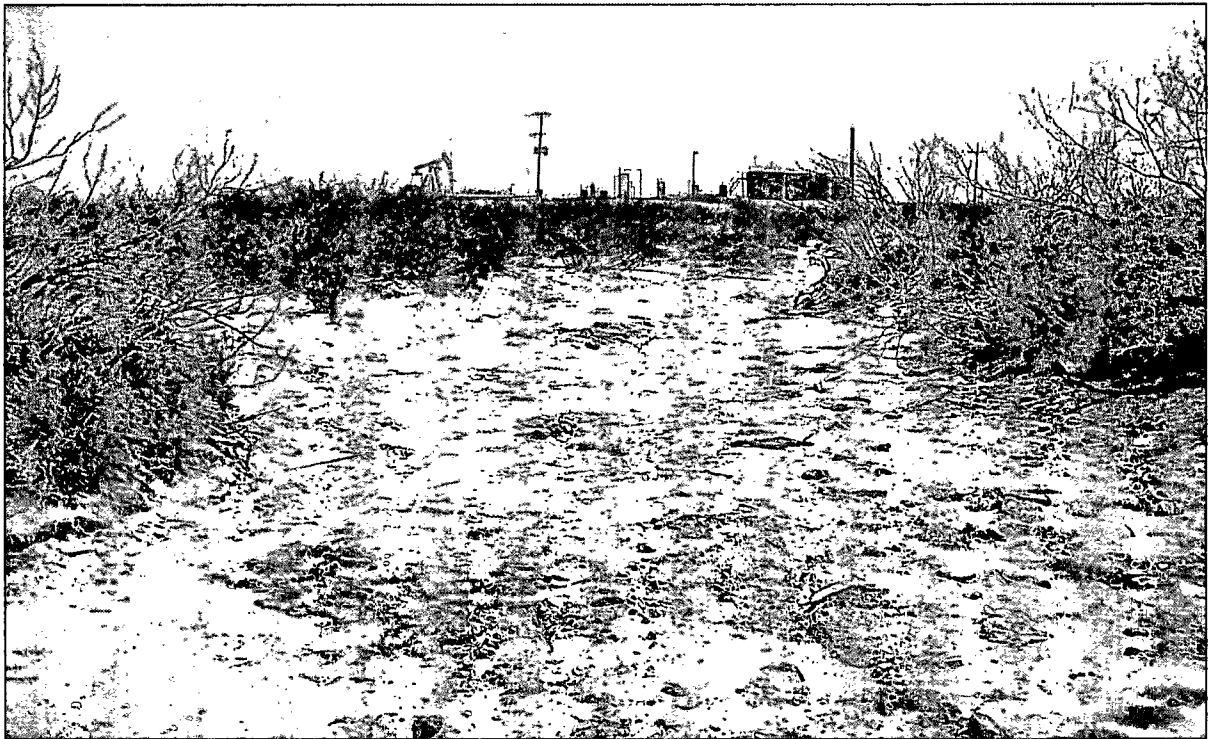
Poker Lake Unit #158 Flowline - Release Site (Facing South)



Poker Lake Unit #158 Flowline - Release Site (Run-Off Area)



Poker Lake Unit #158 Flowline - Release Site (Run-Off Area)



Poker Lake Unit #158 Flowline - Release Site (Run-Off Area)



Poker Lake Unit #158 Flowline - North Excavation



Poker Lake Unit #158 Flowline - North Excavation



Poker Lake Unit #158 Flowline - North Excavation



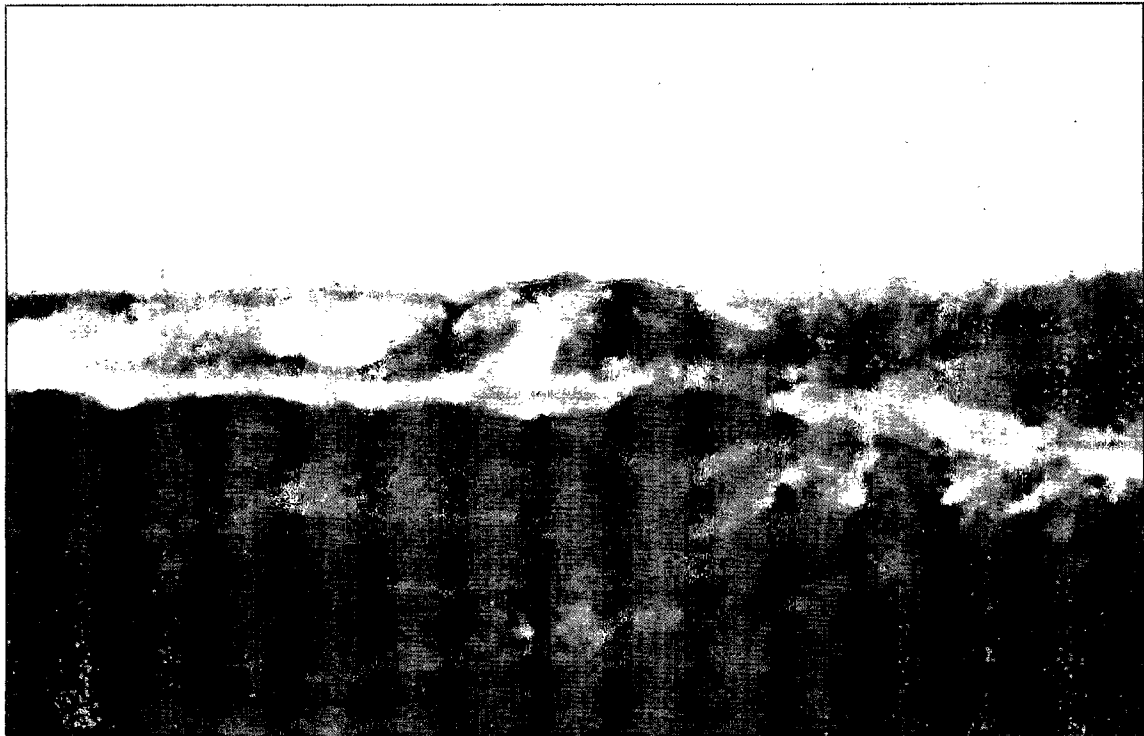
Poker Lake Unit #158 Flowline - North Excavation (Liner Installation)



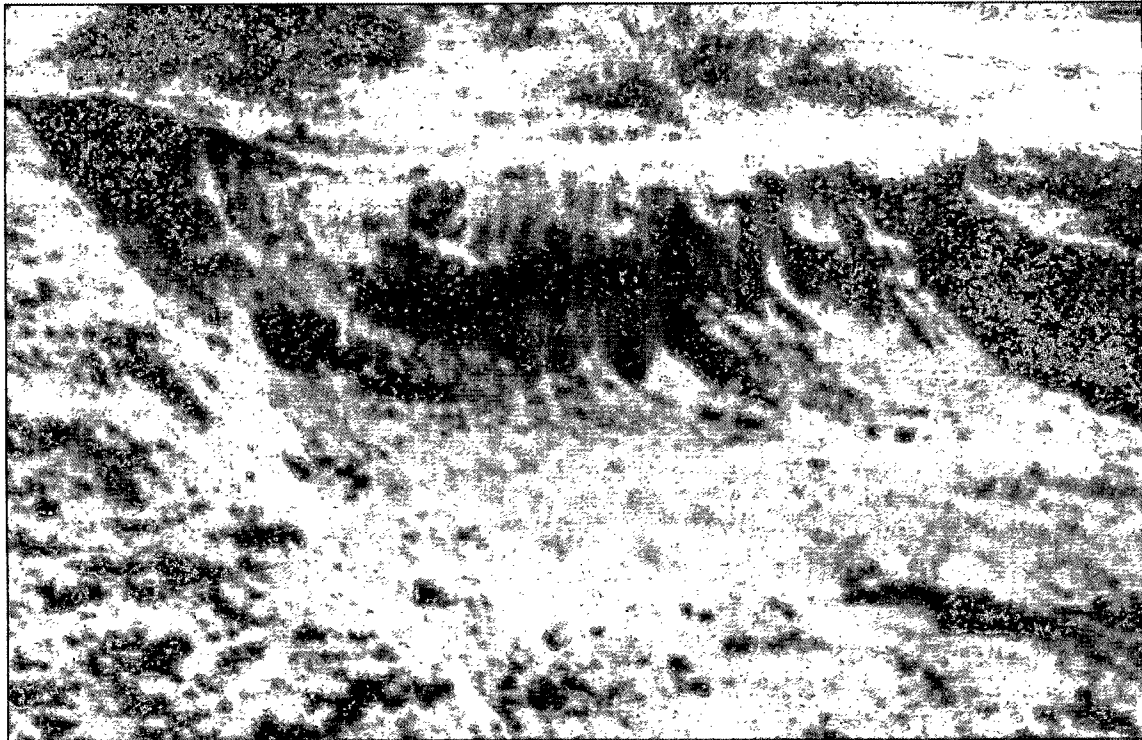
Poker Lake Unit #158 Flowline - North Excavation (During Backfilling)



Poker Lake Unit #158 Flowline - North Excavation (Following Backfilling)



Poker Lake Unit #158 Flowline - South Excavation



Poker Lake Unit #158 Flowline - South Excavation



Poker Lake Unit #158 Flowline - South Excavation (During Backfilling)



Poker Lake Unit #158 Flowline - South Excavation (Following Backfilling)

Appendix C

Laboratory Analytical Reports



CARDINAL LABORATORIES

PHONE (575) 393-2326 • 101 E. MARLAND • HOBBS, NM 88240

July 28, 2010

Camille Bryant
Basin Environmental Consulting, LLC.
P.O. Box 381
Lovington, NM 88260

Re: PLU 158 Flowline (BOPCO)

Enclosed are the results of analyses for sample number H20383, received by the laboratory on 07/20/10 at 3:50 pm.

Cardinal Laboratories is accredited through Texas NELAP for:

Method SW-846 8021	Benzene, Toluene, Ethyl Benzene, and Total Xylenes
Method SW-846 8260	Benzene, Toluene, Ethyl Benzene, and Total Xylenes
Method TX 1005	Total Petroleum Hydrocarbons

Certificate number T104704398-08-TX. Accreditation applies to solid and chemical materials and non-potable water matrices.


Cardinal Laboratories is accredited through the State of Colorado Department of Public Health and Environment for:

Method EPA 552.2	Haloacetic Acids (HAA-5)
Method EPA 524.2	Total Trihalomethanes (TTHM)
Method EPA 524.2	Regulated VOCs (V2, V3)

Accreditation applies to public drinking water matrices.

Total Number of Pages of Report: 7 (includes Chain of Custody)

Sincerely,


Celey D. Keene
Laboratory Director



PHONE (575) 393-2326 • 101 E. MARLAND • HOBBS, NM 88240

ANALYTICAL RESULTS FOR
BASIN ENVIRONMENTAL CONSULTING, LLC
ATTN: CAMILLE BRYANT
P.O. BOX 381
LOVINGTON, NM 88260
FAX TO: (575) 396-1429

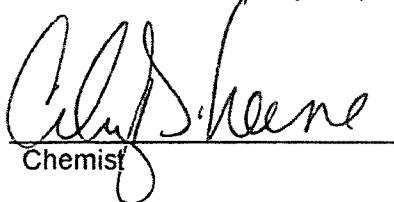
Receiving Date: 07/20/10
Reporting Date: 07/24/10
Project Owner: BOPCO
Project Name: PLU 158 FLOWLINE
Project Location: EDDY CO., NM

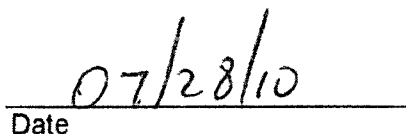
Analysis Date: 07/23/10
Sampling Date: 07/14/10 THRU 07/16/10
Sample Type: SOIL
Sample Condition: COOL & INTACT @ 2.5°C
Sample Received By: JH
Analyzed By: HM/CK

LAB NUMBER	SAMPLE ID	Cl ⁻ (mg/kg)
H20383-1	SAMPLE 1 @ SURFACE	48
H20383-2	SAMPLE 1 @ 1'	80
H20383-3	SAMPLE 2 @ 6"	80
H20383-4	SAMPLE 2 @ 4'	912
H20383-5	SAMPLE 2 @ 8'	5,040
H20383-6	SAMPLE 3 @ 1'	64
H20383-7	SAMPLE 4 @ 1'	48
H20383-8	SAMPLE 5 @ 1'	< 16
H20383-9	SAMPLE 6 @ 1'	< 16
H20383-10	SAMPLE 8 @ 6"	208
H20383-11	SAMPLE 8 @ 4'	4,960
H20383-12	SAMPLE 8 @ 8'	28,400
H20383-13	SAMPLE 9 @ 1'	1,070
H20383-14	SAMPLE 9 @ 3'	10,500
H20383-15	SAMPLE 9 @ 5'	5,360
Quality Control		510
True Value QC		500
% Recovery		102
Relative Percent Difference		< 0.1

METHOD: Standard Methods 4500-Cl⁻B

Note: Analyses performed on 1:4 w:v aqueous extracts.


Chemist


Date

H20383 Basin

PLEASE NOTE: Liability and Damages. Cardinal's liability and client's exclusive remedy for any claim arising, whether based in contract or tort, shall be limited to the amount paid by client for analyses. All claims, including those for negligence and any other cause whatsoever shall be deemed waived unless made in writing and received by Cardinal within thirty (30) days after completion of the applicable service. In no event shall Cardinal be liable for incidental or consequential damages, including, without limitation, business interruptions, loss of use, or loss of profits incurred by client, its subsidiaries affiliates or successors arising out of or related to the performance of services hereunder by Cardinal, regardless of whether such claim is based upon any of the above-stated reasons or otherwise. Results relate only to the samples identified above. This report shall not be reproduced except in full with written approval of Cardinal Laboratories.

ANALYTICAL RESULTS FOR
 BASIN ENVIRONMENTAL CONSULTING, LLC
 ATTN: CAMILLE BRYANT
 P.O. BOX 381
 LOVINGTON, NM 88260
 FAX TO: (575) 396-1429

Receiving Date: 07/20/10
 Reporting Date: 07/24/10
 Project Owner: BOPCO
 Project Name: PLU 158 FLOWLINE
 Project Location: EDDY CO., NM

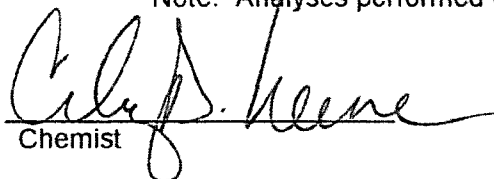
Analysis Date: 07/23/10
 Sampling Date: 07/14/10 THRU 07/16/10
 Sample Type: SOIL
 Sample Condition: COOL & INTACT @ 2.5°C
 Sample Received By: JH
 Analyzed By: CK

LAB NUMBER	SAMPLE ID	Cl ⁻ (mg/kg)
H20383-16	SAMPLE 12 @ 1'	32
H20383-17	SAMPLE 18 @ 1'	32
H20383-18	SAMPLE 18 @ 3'	32
H20383-19	SAMPLE 22 @ 6"	416
H20383-20	SAMPLE 22 @ 4'	528
H20383-21	SAMPLE 22 @ 8'	1,060
H20383-22	SAMPLE 24 @ 6"	496
H20383-23	SAMPLE 24 @ 4'	576
H20383-24	SAMPLE 24 @ 8'	3,200
H20383-25	SAMPLE 25 @ 1'	< 16
H20383-26	SAMPLE 27 @ 1'	< 16
H20383-27	SAMPLE 30 @ 1'	< 16
H20383-28	SAMPLE 32 @ 1'	< 16
H20383-29	SAMPLE 33 @ 1'	32
Quality Control		510
True Value QC		500
% Recovery		102
Relative Percent Difference		< 0.1

METHOD: Standard Methods

4500-Cl⁻B

Note: Analyses performed on 1:4 w:v aqueous extracts.


 Chemist

07/28/10
 Date

H20383 Basin

**ANALYTICAL RESULTS FOR
BASIN ENVIRONMENTAL CONSULTING
ATTN: CAMILLE BRYANT
P.O. BOX 381
LOVINGTON, NM 88260
FAX TO: (575) 396-1429**

Receiving Date: 07/20/10
Reporting Date: 07/28/10
Project Owner: BOPCO
Project Name: PLU 158 FLOWLINE
Project Location: EDDY COUNTY, NM


Sampling Date: 07/14/10 - 07/16/10
Sample Type: SOIL
Sample Condition: COOL & INTACT @ 2.5°C
Sample Received By: JH
Analyzed By: AB

		GRO (C ₆ -C ₁₀) (mg/kg)	DRO (>C ₁₀ -C ₂₈) (mg/kg)	DRO ext. (>C ₂₈ -C ₃₅) (mg/kg)
LAB NUMBER	SAMPLE ID			
ANALYSIS DATE		07/24/10	07/24/10	07/24/10
H20383-3*	SAMPLE 2 @ 6"	1,650	4,280	18.2
H20383-5	SAMPLE 2 @ 8'	<10.0	85.1	27.3
H20383-10	SAMPLE 8 @ 6"	1,660	7,500	67.0
H20383-11	SAMPLE 8 @ 4'	69.6	491	<10.0
H20383-12	SAMPLE 8 @ 8'	25.6	282	<10.0
H20383-17	SAMPLE 18 @ 1'	<10.0	<10.0	<10.0
H20383-22	SAMPLE 24 @ 6"	<50.0	4,270	<50.0
Quality Control		438	429	-
True Value QC		500	500	-
% Recovery		87.6	85.8	-
Relative Percent Difference		1.1	1.1	

METHODS: TPH GRO & DRO: EPA SW-846 8015 M extended

Reported on wet weight. Not accredited for GRO/DRO/DRO Ext.

*One or more TPH surrogates outside historical limits due to matrix interference.


Lab Director

07/28/10
Date

H20383 TPHEXT BASIN

PLEASE NOTE: Liability and Damages. Cardinal's liability and client's exclusive remedy for any claim arising, whether based in contract or tort, shall be limited to the amount paid by client for analyses. All claims, including those for negligence and any other cause whatsoever shall be deemed waived unless made in writing and received by Cardinal within thirty (30) days after completion of the applicable service. In no event shall Cardinal be liable for incidental or consequential damages, including, without limitation, business interruptions, loss of use, or loss of profits incurred by client, its subsidiaries, affiliates or successors arising out of or related to the performance of services hereunder by Cardinal, regardless of whether such claim is based upon any of the above-stated reasons or otherwise. Results relate only to the samples identified above. This report shall not be reproduced except in full with written approval of Cardinal Laboratories.



CHAIN-OF-CUSTODY AND ANALYSIS REQUEST

† Cardinal cannot accept verbal changes. Please fax written changes to 505-393-2476

1-3

CHAIN-OF-CUSTODY AND ANALYSIS REQUEST

CARDINAL LABORATORIES

101 East Marland, Hobbs, NM 88240

(505) 393-2326 FAX (505) 393-2476

Company Name: <u>Basin Environmental Consulting</u>				BILL TO				ANALYSIS REQUEST																			
Project Manager: <u>Cassile Bryant</u>				P.O. #:				<div style="display: flex; flex-direction: column; align-items: center;"> <div>Culovide 41500</div> <div>TPH 8015 M Ext.</div> <div>BTEX 8021 B</div> </div>																			
Address: <u>P.O. Box 381</u>				Company: <u>BOPCO LP</u>																							
City: <u>Livingston</u> State: <u>NM</u> Zip: <u>88260</u>				Attn: <u>Tony Savoie</u>																							
Phone #: <u>575-605-7210</u> Fax #:				Address:																							
Project #: Project Owner:				City:																							
Project Name: <u>PLU 158 Flowline</u>				State: Zip:																							
Project Location:				Phone #:																							
Sampler Name:				Fax #:																							
FOR LAB USE ONLY																											
Lab I.D.		Sample I.D.		(G)RAB OR (C)OMP.		# CONTAINERS		MATRIX				PRESERV.		SAMPLING													
								GROUNDWATER WASTEWATER SOIL OIL SLUDGE OTHER:				ACID/BASE: ICE / COOL OTHER:		DATE TIME													
H2036311		Sample 8 @ 4'		6								X		7/16/10 11:00		X X											
12		Sample 8 @ 8'												7/16/10 4:10		X											
13		Sample 9 @ 1'												7/14/10 9:10													
14		Sample 9 @ 3'												7/15/10 8:10													
15		Sample 9 @ 5'												7/16/10 9:20													
16		Sample 12 @ 1'												7/14/10 9:30													
17		Sample 18 @ 1'												7/14/10 9:50		X											
18		Sample 18 @ 3'												7/10/10 9:55													
19		Sample 22 @ 6'												7/14/10 10:05													
20		Sample 22 @ 4'												7/16/10 10:10													

PLEASE NOTE: Liability and Damages. Cardinal's liability and client's exclusive remedy for any claim arising whether based in contract or tort, shall be limited to the amount paid by the client for the analyses. All claims, including those for negligence and any other cause whatsoever shall be deemed waived unless made in writing and received by Cardinal within 30 days after completion of the applicable service. In no event shall Cardinal be liable for incidental or consequential damages, including without limitation, business interruptions, loss of use, or loss of profits incurred by client, its subsidiaries, affiliates or successors arising out of or related to the performance of services hereunder by Cardinal, regardless of whether such claim is based upon any of the above stated matters or otherwise.

Relinquished By:		Date:		Received By:		Phone Result: <input type="checkbox"/> Yes <input type="checkbox"/> No		Add'l Phone #:	
		Time:				Fax Result: <input type="checkbox"/> Yes <input type="checkbox"/> No		Add'l Fax #:	
REMARKS:									

Relinquished By:		Date:		Received By:		Sample Condition		CHECKED BY:	
5002 LOWRY		7/20/10		Jodi Benson		Cool Intact		(Initials)	
		Time: 3:50				Cool Intact			
Delivered By: (Circle One)						Cool Intact			
Sampler - UPS - Bus - Other:						Cool Intact			
						Cool Intact			

† Cardinal cannot accept verbal changes. Please fax written changes to 505-393-2476

#26

**CARDINAL LABORATORIES**

101 East Marland, Hobbs, NM 88240

(505) 393-2326 FAX (505) 393-2476

CHAIN-OF-CUSTODY AND ANALYSIS REQUEST

Company Name: <u>Basin Environmental Consulting</u>				BILL TO				ANALYSIS REQUEST																			
Project Manager: <u>Camille Bryant</u>				P.O. #:				<div style="display: flex; flex-direction: column; align-items: center;"> <div>Chloride 4500</div> <div>TPH 8015 M Ext.</div> <div>BTEX 8021 B</div> </div>																			
Address: <u>P.O. Box 381</u>				Company: <u>BOPCO LP</u>																							
City: <u>Lawington</u> State: <u>NM</u> Zip: <u>88260</u>				Attn: <u>Tony Savoie</u>																							
Phone #: <u>505-1005-7210</u> Fax #:				Address:																							
Project #:				City:																							
Project Name: <u>PLU 158 Flowing</u>				State: Zip:																							
Project Location:				Phone #:																							
Sampler Name:				Fax #:																							
FOR LAB USE ONLY																											
Lab I.D.	Sample I.D.	(GRABOR / COMP.)	# CONTAINERS	GROUNDWATER	WASTEWATER	SOIL	OIL	SLUDGE	OTHER:	ACID/BASE:	ICE / COOL	OTHER:	DATE	TIME													
H20383-21	Sample 22 @ 8'	6	1			X							7/16/10	10:20	X												
	22 Sample 24 @ 6"												7/15/10	9:00	X												
	23 Sample 24 @ 4'												7/16/10	10:30													
	24 Sample 24 @ 8'												7/16/10	10:40													
	25 Sample 25 @ 1'												7/15/10	9:10													
	26 Sample 27 @ 1'												7/15/10	9:20													
	27 Sample 30 @ 1'												7/15/10	9:40													
	28 Sample 32 @ 1'												7/15/10	9:50													
	29 Sample 33 @ 1'												7/15/10	9:55													

PLEASE NOTE: Liability and Damages. Cardinal's liability and client's exclusive remedy for any claim arising whether based in contract or tort, shall be limited to the amount paid by the client for the analyses. All claims including those for negligence and any other cause whatsoever shall be deemed waived unless made in writing and received by Cardinal within 30 days after completion of the applicable service. In no event shall Cardinal be liable for incidental or consequential damages, including without limitation, business interruptions, loss of use, or loss of profits incurred by client, its subsidiaries, affiliates or successors arising out of or related to the performance of services hereunder by Cardinal, regardless of whether such claim is based upon any of the above stated warranties or otherwise.

Relinquished By:	Date:	Received By:	Phone Result:	<input type="checkbox"/> Yes <input type="checkbox"/> No	Add'l Phone #:
	Time:		Fax Result:	<input type="checkbox"/> Yes <input type="checkbox"/> No	Add'l Fax #:
Relinquished By:	Date:	Received By:	REMARKS:		
<u>3ERR Coway</u>	<u>7/20/10</u> Time: <u>3:50</u>	<u>Jodi Benson</u>			
Delivered By: (Circle One)	Sample Condition	CHECKED BY:			
Sampler - UPS - Bus - Other:	Cool Intact 2.5°C <input type="checkbox"/> Yes <input type="checkbox"/> No	(Initials) <u>JS</u>			

† Cardinal cannot accept verbal changes. Please fax written changes to 505-393-2476

#26

3-3

March 01, 2011

BEN J. ARGUIJO

Basin Environmental Service

P.O. Box 301

Lovington, NM 88260

RE: POKER LAKE UNIT 158 FLOWLINE

Enclosed are the results of analyses for samples received by the laboratory on 02/25/11 16:14.

Cardinal Laboratories is accredited through Texas NELAP for:

Method SW-846 8021	Benzene, Toluene, Ethyl Benzene, and Total Xylenes
Method SW-846 8260	Benzene, Toluene, Ethyl Benzene, and Total Xylenes
Method TX 1005	Total Petroleum Hydrocarbons

Certificate number T104704398-08-TX. Accreditation applies to solid and chemical materials and non-potable water matrices.

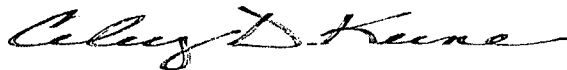
Cardinal Laboratories is accredited through the State of Colorado Department of Public Health and Environment for:

Method EPA 552.2	Haloacetic Acids (HAA-5)
Method EPA 524.2	Total Trihalomethanes (TTHM)
Method EPA 524.4	Regulated VOCs (V2, V3)

Accreditation applies to public drinking water matrices.

This report meets NELAP requirements and is made up of a cover page, analytical results, and a copy of the original chain-of-custody. If you have any questions concerning this report, please feel free to contact me.

Sincerely,



Celey D. Keene

Lab Director/Quality Manager

Analytical Results For:

 Basin Environmental Service
 BEN J. ARGUIJO
 P.O. Box 301
 Lovington NM, 88260
 Fax To: (575) 396-1429

Received:	02/25/2011	Sampling Date:	02/25/2011
Reported:	03/01/2011	Sampling Type:	Soil
Project Name:	POKER LAKE UNIT 158 FLOWLINE	Sampling Condition:	Cool & Intact
Project Number:	AFE #24753	Sample Received By:	Jodi Henson
Project Location:	EDDY COUNTY, NEW MEXICO		

Sample ID: STOCK PILE 'A' (H100388-01)

Chloride, SM4500Cl-B			mg/kg		Analyzed By: HM				
Analyte	Result	Reporting Limit	Analyzed	Method Blank	BS	% Recovery	True Value QC	RPD	Qualifier
Chloride	512	16.0	02/28/2011	ND	416	104	400	0.00	
TPH 8015M			mg/kg		Analyzed By: AB				
Analyte	Result	Reporting Limit	Analyzed	Method Blank	BS	% Recovery	True Value QC	RPD	Qualifier
GRO C6-C10	<10.0	10.0	03/01/2011	ND	198	98.8	200	3.49	
DRO >C10-C28	151	10.0	03/01/2011	ND	202	101	200	3.04	
EXT DRO >C28-C35	27.0	10.0	03/01/2011	ND					
<hr/>									
Surrogate: 1-Chlorooctane	100 %	70-130							
Surrogate: 1-Chlorooctadecane	101 %	70-130							

Sample ID: N EXC FLOOR 5' BGS (H100388-02)

Chloride, SM4500Cl-B			mg/kg		Analyzed By: HM				
Analyte	Result	Reporting Limit	Analyzed	Method Blank	BS	% Recovery	True Value QC	RPD	Qualifier
Chloride	2320	16.0	02/28/2011	ND	416	104	400	0.00	
TPH 8015M			mg/kg		Analyzed By: AB				
Analyte	Result	Reporting Limit	Analyzed	Method Blank	BS	% Recovery	True Value QC	RPD	Qualifier
GRO C6-C10	<10.0	10.0	03/01/2011	ND	198	98.8	200	3.49	
DRO >C10-C28	14.0	10.0	03/01/2011	ND	202	101	200	3.04	
EXT DRO >C28-C35	<10.0	10.0	03/01/2011	ND					
<hr/>									
Surrogate: 1-Chlorooctane	103 %	70-130							
Surrogate: 1-Chlorooctadecane	104 %	70-130							

Cardinal Laboratories

*=Accredited Analyte

PLEASE NOTE: Liability and Damages. Cardinal's liability and client's exclusive remedy for any claim arising, whether based in contract or tort, shall be limited to the amount paid by client for analyses. All claims, including those for negligence and any other cause whatsoever shall be deemed waived unless made in writing and received by Cardinal within thirty (30) days after completion of the applicable service. In no event shall Cardinal be liable for incidental or consequential damages, including, without limitation, business interruptions, loss of use, or loss of profits incurred by client, its subsidiaries, affiliates or successors arising out of or related to the performance of the services hereunder by Cardinal, regardless of whether such claim is based upon any of the above stated reasons or otherwise. Results relate only to the samples identified above. This report shall not be reproduced except in full with written approval of Cardinal Laboratories.



Celey D. Keene, Lab Director/Quality Manager

Analytical Results For:

 Basin Environmental Service
 BEN J. ARGUIJO
 P.O. Box 301
 Lovington NM, 88260
 Fax To: (575) 396-1429

 Received: 02/25/2011
 Reported: 03/01/2011
 Project Name: POKER LAKE UNIT 158 FLOWLINE
 Project Number: AFE #24753
 Project Location: EDDY COUNTY, NEW MEXICO

 Sampling Date: 02/25/2011
 Sampling Type: Soil
 Sampling Condition: Cool & Intact
 Sample Received By: Jodi Henson

Sample ID: N EXC W WALL 5' BGS (H100388-03)

Chloride, SM4500Cl-B			mg/kg		Analyzed By: HM				
Analyte	Result	Reporting Limit	Analyzed	Method Blank	BS	% Recovery	True Value QC	RPD	Qualifier
Chloride	240	16.0	02/28/2011	ND	416	104	400	0.00	
TPH 8015M			mg/kg		Analyzed By: AB				
Analyte	Result	Reporting Limit	Analyzed	Method Blank	BS	% Recovery	True Value QC	RPD	Qualifier
GRO C6-C10	<10.0	10.0	03/01/2011	ND	198	98.8	200	3.49	
DRO >C10-C28	<10.0	10.0	03/01/2011	ND	202	101	200	3.04	
EXT DRO >C28-C35	<10.0	10.0	03/01/2011	ND					
<i>Surrogate: 1-Chlorooctane</i>									
	106 %	70-130							
<i>Surrogate: 1-Chlorooctadecane</i>									
	103 %	70-130							


Sample ID: N EXC N WALL 5' BGS (H100388-04)

Chloride, SM4500Cl-B			mg/kg		Analyzed By: HM				
Analyte	Result	Reporting Limit	Analyzed	Method Blank	BS	% Recovery	True Value QC	RPD	Qualifier
Chloride	304	16.0	02/28/2011	ND	416	104	400	0.00	
TPH 8015M			mg/kg		Analyzed By: AB				
Analyte	Result	Reporting Limit	Analyzed	Method Blank	BS	% Recovery	True Value QC	RPD	Qualifier
GRO C6-C10	<10.0	10.0	03/01/2011	ND	198	98.8	200	3.49	
DRO >C10-C28	<10.0	10.0	03/01/2011	ND	202	101	200	3.04	
EXT DRO >C28-C35	<10.0	10.0	03/01/2011	ND					
<i>Surrogate: 1-Chlorooctane</i>									
	102 %	70-130							
<i>Surrogate: 1-Chlorooctadecane</i>									
	99.6 %	70-130							

Cardinal Laboratories

* = Accredited Analyte

PLEASE NOTE: Liability and Damages. Cardinal's liability and client's exclusive remedy for any claim arising, whether based in contract or tort, shall be limited to the amount paid by client for analyses. All claims, including those for negligence and any other cause whatsoever shall be deemed waived unless made in writing and received by Cardinal within thirty (30) days after completion of the applicable service. In no event shall Cardinal be liable for incidental or consequential damages, including, without limitation, business interruptions, loss of use, or loss of profits incurred by client, its subsidiaries, affiliates or successors arising out of or related to the performance of the services hereunder by Cardinal, regardless of whether such claim is based upon any of the above stated reasons or otherwise. Results relate only to the samples identified above. This report shall not be reproduced except in full with written approval of Cardinal Laboratories.



Celey D. Keene, Lab Director/Quality Manager

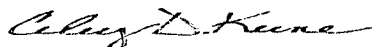
Notes and Definitions

ND	Analyte NOT DETECTED at or above the reporting limit
RPD	Relative Percent Difference
**	Samples not received at proper temperature of 6°C or below.
***	Insufficient time to reach temperature.
-	Chloride by SM4500Cl-B does not require samples be received at or below 6°C Samples reported on an as received basis (wet) unless otherwise noted on report

Cardinal Laboratories

*=Accredited Analyte

PLEASE NOTE: Liability and Damages. Cardinal's liability and client's exclusive remedy for any claim arising, whether based in contract or tort, shall be limited to the amount paid by client for analyses. All claims, including those for negligence and any other cause whatsoever shall be deemed waived unless made in writing and received by Cardinal within thirty (30) days after completion of the applicable service. In no event shall Cardinal be liable for incidental or consequential damages, including, without limitation, business interruptions, loss of use, or loss of profits incurred by client, its subsidiaries, affiliates or successors arising out of or related to the performance of the services hereunder by Cardinal, regardless of whether such claim is based upon any of the above stated reasons or otherwise. Results relate only to the samples identified above. This report shall not be reproduced except in full with written approval of Cardinal Laboratories.



Celestine D. Keene, Lab Director/Quality Manager



Company Name: Basin Environmental Service Technologies LLC				BILL TO				ANALYSIS REQUEST																				
Project Manager: Ben J Argujo				P.O. #:																								
Address: P.O. BOX 301				Company: BOPCO, LP																								
City: Lovington State: NM Zip: 88260				Attn: Tony Savoir																								
Phone #: (575) 396-2374 Fax #: (575) 396-1429				Address: 522 W. Mermod																								
Project #: AFE # 24753 Project Owner: BOPCO, LP				City: Carlsbad																								
Project Name: Parker Lake Unit 158 Flowline				State: NM Zip: 88220																								
Project Location: EDDY, NM.				Phone #: (432) 556-8730																								
Sampler Name: Jody Walters				Fax #:																								
FOR LAB USE ONLY						MATRIX		PRESERV.		SAMPLING																		
Lab I.D.	Sample I.D.	(G)RAB OR (C)OMP.	# CONTAINERS	GROUNDWATER	WASTEWATER	SOIL	OIL	SLUDGE	OTHER:	ACID/BASE:	ICE / COOL	OTHER:	DATE	TIME														
H100398-1	Stack Pile "A"	G	1			X				X			2-25-11	8:00AM	X	X												
2	North Excavation Floor 5' B65	G	1			X				X			2-25-11	8:10AM	X	X												
3	North Excavation West wall 5' B65	G	1			X				X			2-25-11	8:20AM	X	X												
4	North Excavation North wall 5' B65	G	1			X				X			2-25-11	8:30AM	X	X												
PLEASE NOTE: Liability and Damages. Cardinal's liability and client's exclusive remedy for any claim arising whether based in contract or tort, shall be limited to the amount paid by the client for the analyses. All claims, including those for negligence and any other cause whatsoever shall be deemed waived unless made in writing and received by Cardinal within 30 days after completion of the applicable service. In no event shall Cardinal be liable for incidental or consequential damages, including without limitation, business interruptions, loss of use, or loss of profits incurred by client, its subsidiaries, affiliates or successors arising out of or related to the performance of services hereunder by Cardinal, regardless of whether such claim is based upon any of the above stated reasons or otherwise.																												
Relinquished By:		Date: 2/25/11		Received By:		Phone Result: <input type="checkbox"/> Yes <input type="checkbox"/> No		Add'l Phone #:		REMARKS: email to Ben + Tony																		
Time: 4:14		Time:		Received By:		Fax Result: <input type="checkbox"/> Yes <input type="checkbox"/> No		Add'l Fax #:																				
Relinquished By:		Date:		Received By:		Time:																						
Delivered By: (Circle One)				Sample Condition				CHECKED BY:																				
Sampler - UPS - Bus - Other:				Cool Intact 5.5°C <input checked="" type="checkbox"/> Yes <input type="checkbox"/> No <input type="checkbox"/> Yes <input type="checkbox"/> No				(Initials) GHT																				

March 03, 2011

BEN J. ARGUJO

Basin Environmental Service

P.O. Box 301

Lovington, NM 88260

RE: POKER LAKE UNIT 158 FLOWLINE

Enclosed are the results of analyses for samples received by the laboratory on 03/01/11 15:50.

Cardinal Laboratories is accredited through Texas NELAP for:

Method SW-846 8021	Benzene, Toluene, Ethyl Benzene, and Total Xylenes
Method SW-846 8260	Benzene, Toluene, Ethyl Benzene, and Total Xylenes
Method TX 1005	Total Petroleum Hydrocarbons

Certificate number T104704398-08-TX. Accreditation applies to solid and chemical materials and non-potable water matrices.

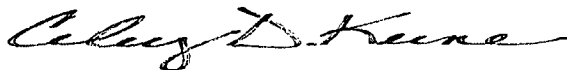
Cardinal Laboratories is accredited through the State of Colorado Department of Public Health and Environment for:

Method EPA 552.2	Haloacetic Acids (HAA-5)
Method EPA 524.2	Total Trihalomethanes (TTHM)
Method EPA 524.4	Regulated VOCs (V2, V3)

Accreditation applies to public drinking water matrices.

This report meets NELAP requirements and is made up of a cover page, analytical results, and a copy of the original chain-of-custody. If you have any questions concerning this report, please feel free to contact me.

Sincerely,



Celey D. Keene

Lab Director/Quality Manager

Analytical Results For:

Basin Environmental Service
BEN J. ARGUIJO
P.O. Box 301
Lovington NM, 88260
Fax To: (575) 396-1429

Received:	03/01/2011	Sampling Date:	02/28/2011
Reported:	03/03/2011	Sampling Type:	Soil
Project Name:	POKER LAKE UNIT 158 FLOWLINE	Sampling Condition:	Cool & Intact
Project Number:	AFE #24753	Sample Received By:	Jodi Henson
Project Location:	EDDY COUNTY, NEW MEXICO		

Sample ID: N EXC E WALL 5' (H100401-01)

Chloride, SM4500Cl-B		mg/kg		Analyzed By: HM						
Analyte	Result	Reporting Limit	Analyzed	Method Blank	BS	% Recovery	True Value QC	RPD	Qualifier	
Chloride	240	16.0	03/02/2011	ND	432	108	400	0.00		
TPH 8015M		mg/kg		Analyzed By: AB						
Analyte	Result	Reporting Limit	Analyzed	Method Blank	BS	% Recovery	True Value QC	RPD	Qualifier	
GRO C6-C10	<10.0	10.0	03/02/2011	ND	212	106	200	2.38		
DRO >C10-C28	<10.0	10.0	03/02/2011	ND	213	107	200	1.53		
EXT DRO >C28-C35	<10.0	10.0	03/02/2011	ND						
Surrogate: 1-Chlorooctane	117 %	70-130								
Surrogate: 1-Chlorooctadecane	114 %	70-130								


Sample ID: N EXC S WALL 5' (H100401-02)

Chloride, SM4500Cl-B		mg/kg		Analyzed By: HM						
Analyte	Result	Reporting Limit	Analyzed	Method Blank	BS	% Recovery	True Value QC	RPD	Qualifier	
Chloride	192	16.0	03/02/2011	ND	416	104	400	3.77		
TPH 8015M		mg/kg		Analyzed By: AB						
Analyte	Result	Reporting Limit	Analyzed	Method Blank	BS	% Recovery	True Value QC	RPD	Qualifier	
GRO C6-C10	<10.0	10.0	03/02/2011	ND	212	106	200	2.38		
DRO >C10-C28	<10.0	10.0	03/02/2011	ND	213	107	200	1.53		
EXT DRO >C28-C35	<10.0	10.0	03/02/2011	ND						
Surrogate: 1-Chlorooctane	113 %	70-130								
Surrogate: 1-Chlorooctadecane	111 %	70-130								

Cardinal Laboratories

*=Accredited Analyte

PLEASE NOTE: Liability and Damages. Cardinal's liability and client's exclusive remedy for any claim arising, whether based in contract or tort, shall be limited to the amount paid by client for analyses. All claims, including those for negligence and any other cause whatsoever shall be deemed waived unless made in writing and received by Cardinal within thirty (30) days after completion of the applicable service. In no event shall Cardinal be liable for incidental or consequential damages, including, without limitation, business interruptions, loss of use, or loss of profits incurred by client, its subsidiaries, affiliates or successors arising out of or related to the performance of the services hereunder by Cardinal, regardless of whether such claim is based upon any of the above stated reasons or otherwise. Results relate only to the samples identified above. This report shall not be reproduced except in full with written approval of Cardinal Laboratories.



Celey D. Keene, Lab Director/Quality Manager

Analytical Results For:

 Basin Environmental Service
 BEN J. ARGUIJO
 P.O. Box 301
 Lovington NM, 88260
 Fax To: (575) 396-1429

Received:	03/01/2011	Sampling Date:	02/28/2011
Reported:	03/03/2011	Sampling Type:	Soil
Project Name:	POKER LAKE UNIT 158 FLOWLINE	Sampling Condition:	Cool & Intact
Project Number:	AFE #24753	Sample Received By:	Jodi Henson
Project Location:	EDDY COUNTY, NEW MEXICO		

Sample ID: S EXC SEC 1 FLOOR 5' (H100401-03)

Chloride, SM4500Cl-B			mg/kg		Analyzed By: HM				
Analyte	Result	Reporting Limit	Analyzed	Method Blank	BS	% Recovery	True Value QC	RPD	Qualifier
Chloride	160	16.0	03/02/2011	ND	416	104	400	3.77	
TPH 8015M			mg/kg		Analyzed By: AB				
Analyte	Result	Reporting Limit	Analyzed	Method Blank	BS	% Recovery	True Value QC	RPD	Qualifier
GRO C6-C10	<10.0	10.0	03/02/2011	ND	212	106	200	2.38	
DRO >C10-C28	<10.0	10.0	03/02/2011	ND	213	107	200	1.53	
EXT DRO >C28-C35	<10.0	10.0	03/02/2011	ND					
<hr/>									
Surrogate: 1-Chlorooctane	113 %	70-130							
Surrogate: 1-Chlorooctadecane	111 %	70-130							


Sample ID: S EXC SEC 1 N WALL 5' (H100401-04)

Chloride, SM4500Cl-B			mg/kg		Analyzed By: HM				
Analyte	Result	Reporting Limit	Analyzed	Method Blank	BS	% Recovery	True Value QC	RPD	Qualifier
Chloride	48.0	16.0	03/02/2011	ND	416	104	400	3.77	
TPH 8015M			mg/kg		Analyzed By: AB				
Analyte	Result	Reporting Limit	Analyzed	Method Blank	BS	% Recovery	True Value QC	RPD	Qualifier
GRO C6-C10	<10.0	10.0	03/02/2011	ND	212	106	200	2.38	
DRO >C10-C28	<10.0	10.0	03/02/2011	ND	213	107	200	1.53	
EXT DRO >C28-C35	<10.0	10.0	03/02/2011	ND					
<hr/>									
Surrogate: 1-Chlorooctane	108 %	70-130							
Surrogate: 1-Chlorooctadecane	106 %	70-130							

Cardinal Laboratories

*=Accredited Analyte

PLEASE NOTE: Liability and Damages. Cardinal's liability and client's exclusive remedy for any claim arising, whether based in contract or tort, shall be limited to the amount paid by client for analyses. All claims, including those for negligence and any other cause whatsoever shall be deemed waived unless made in writing and received by Cardinal within thirty (30) days after completion of the applicable service. In no event shall Cardinal be liable for incidental or consequential damages, including, without limitation, business interruptions, loss of use, or loss of profits incurred by client, its subsidiaries, affiliates or successors arising out of or related to the performance of the services hereunder by Cardinal, regardless of whether such claim is based upon any of the above stated reasons or otherwise. Results relate only to the samples identified above. This report shall not be reproduced except in full with written approval of Cardinal Laboratories.



Celey D. Keene, Lab Director/Quality Manager

Analytical Results For:

 Basin Environmental Service
 BEN J. ARGUIJO
 P.O. Box 301
 Lovington NM, 88260
 Fax To: (575) 396-1429

Received:	03/01/2011	Sampling Date:	02/28/2011
Reported:	03/03/2011	Sampling Type:	Soil
Project Name:	POKER LAKE UNIT 158 FLOWLINE	Sampling Condition:	Cool & Intact
Project Number:	AFE #24753	Sample Received By:	Jodi Henson
Project Location:	EDDY COUNTY, NEW MEXICO		

Sample ID: S EXC SEC 1 S WALL 5' (H100401-05)

Chloride, SM4500CI-B		mg/kg		Analyzed By: HM					
Analyte	Result	Reporting Limit	Analyzed	Method Blank	BS	% Recovery	True Value QC	RPD	Qualifier
Chloride	32.0	16.0	03/02/2011	ND	416	104	400	3.77	
TPH 8015M		mg/kg		Analyzed By: AB					
Analyte	Result	Reporting Limit	Analyzed	Method Blank	BS	% Recovery	True Value QC	RPD	Qualifier
GRO C6-C10	<10.0	10.0	03/02/2011	ND	212	106	200	2.38	
DRO >C10-C28	<10.0	10.0	03/02/2011	ND	213	107	200	1.53	
EXT DRO >C28-C35	<10.0	10.0	03/02/2011	ND					
<hr/>									
Surrogate: 1-Chlorooctane	112 %	70-130							
Surrogate: 1-Chlorooctadecane	110 %	70-130							

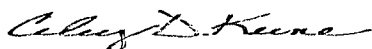
Sample ID: S EXC SEC 1 STOCKPILE 'C' (H100401-06)

Chloride, SM4500CI-B		mg/kg		Analyzed By: HM					
Analyte	Result	Reporting Limit	Analyzed	Method Blank	BS	% Recovery	True Value QC	RPD	Qualifier
Chloride	288	16.0	03/02/2011	ND	416	104	400	3.77	
TPH 8015M		mg/kg		Analyzed By: AB					
Analyte	Result	Reporting Limit	Analyzed	Method Blank	BS	% Recovery	True Value QC	RPD	Qualifier
GRO C6-C10	<10.0	10.0	03/02/2011	ND	212	106	200	2.38	
DRO >C10-C28	128	10.0	03/02/2011	ND	213	107	200	1.53	
EXT DRO >C28-C35	20.1	10.0	03/02/2011	ND					
<hr/>									
Surrogate: 1-Chlorooctane	108 %	70-130							
Surrogate: 1-Chlorooctadecane	105 %	70-130							

Cardinal Laboratories

*=Accredited Analyte

PLEASE NOTE: Liability and Damages. Cardinal's liability and client's exclusive remedy for any claim arising, whether based in contract or tort, shall be limited to the amount paid by client for analyses. All claims, including those for negligence and any other cause whatsoever shall be deemed waived unless made in writing and received by Cardinal within thirty (30) days after completion of the applicable service. In no event shall Cardinal be liable for incidental or consequential damages, including, without limitation, business interruptions, loss of use, or loss of profits incurred by client, its subsidiaries, affiliates or successors arising out of or related to the performance of the services hereunder by Cardinal, regardless of whether such claim is based upon any of the above stated reasons or otherwise. Results relate only to the samples identified above. This report shall not be reproduced except in full with written approval of Cardinal Laboratories.



Celey D. Keene, Lab Director/Quality Manager

Analytical Results For:

Basin Environmental Service
BEN J. ARGUIJO
P.O. Box 301
Lovington NM, 88260
Fax To: (575) 396-1429

Received: 03/01/2011
Reported: 03/03/2011
Project Name: POKER LAKE UNIT 158 FLOWLINE
Project Number: AFE #24753
Project Location: EDDY COUNTY, NEW MEXICO

Sampling Date: 02/28/2011
Sampling Type: Soil
Sampling Condition: Cool & Intact
Sample Received By: Jodi Henson

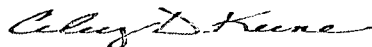
Sample ID: S EXC SEC 1 E WALL 4' (H100401-07)

Chloride, SM4500Cl-B			mg/kg		Analyzed By: HM				
Analyte	Result	Reporting Limit	Analyzed	Method Blank	BS	% Recovery	True Value QC	RPD	Qualifier
Chloride	32.0	16.0	03/02/2011	ND	416	104	400	3.77	
TPH 8015M			mg/kg		Analyzed By: AB				
Analyte	Result	Reporting Limit	Analyzed	Method Blank	BS	% Recovery	True Value QC	RPD	Qualifier
GRO C6-C10	<10.0	10.0	03/02/2011	ND	212	106	200	2.38	
DRO >C10-C28	<10.0	10.0	03/02/2011	ND	213	107	200	1.53	
EXT DRO >C28-C35	<10.0	10.0	03/02/2011	ND					
Surrogate: 1-Chlorooctane	114 %	70-130							
Surrogate: 1-Chlorooctadecane	111 %	70-130							

Cardinal Laboratories

*=Accredited Analyte

PLEASE NOTE: Liability and Damages. Cardinal's liability and client's exclusive remedy for any claim arising, whether based in contract or tort, shall be limited to the amount paid by client for analyses. All claims, including those for negligence and any other cause whatsoever shall be deemed waived unless made in writing and received by Cardinal within thirty (30) days after completion of the applicable service. In no event shall Cardinal be liable for incidental or consequential damages, including, without limitation, business interruptions, loss of use, or loss of profits incurred by client, its subsidiaries, affiliates or successors arising out of or related to the performance of the services hereunder by Cardinal, regardless of whether such claim is based upon any of the above stated reasons or otherwise. Results relate only to the samples identified above. This report shall not be reproduced except in full with written approval of Cardinal Laboratories.



Celey D. Keene, Lab Director/Quality Manager


Notes and Definitions

ND	Analyte NOT DETECTED at or above the reporting limit
RPD	Relative Percent Difference
**	Samples not received at proper temperature of 6°C or below.
***	Insufficient time to reach temperature.
-	Chloride by SM4500Cl-B does not require samples be received at or below 6°C Samples reported on an as received basis (wet) unless otherwise noted on report

Cardinal Laboratories

*=Accredited Analyte

PLEASE NOTE: Liability and Damages. Cardinal's liability and client's exclusive remedy for any claim arising, whether based in contract or tort, shall be limited to the amount paid by client for analyses. All claims, including those for negligence and any other cause whatsoever shall be deemed waived unless made in writing and received by Cardinal within thirty (30) days after completion of the applicable service. In no event shall Cardinal be liable for incidental or consequential damages, including, without limitation, business interruptions, loss of use, or loss of profits incurred by client, its subsidiaries, affiliates or successors arising out of or related to the performance of the services hereunder by Cardinal, regardless of whether such claim is based upon any of the above stated reasons or otherwise. Results relate only to the samples identified above. This report shall not be reproduced except in full with written approval of Cardinal Laboratories.



Celey D. Keene, Lab Director/Quality Manager

[illegible]



PHONE (575) 393-2326 • 101 E. MARLAND • HOBBS, NM 88240

March 08, 2011

BEN J. ARGUIJO

Basin Environmental Service

P.O. Box 301

Lovington, NM 88260

RE: POKER LAKE UNIT 158 FLOWLINE

Enclosed are the results of analyses for samples received by the laboratory on 03/02/11 15:34.

Cardinal Laboratories is accredited through Texas NELAP for:

Method SW-846 8021	Benzene, Toluene, Ethyl Benzene, and Total Xylenes
Method SW-846 8260	Benzene, Toluene, Ethyl Benzene, and Total Xylenes
Method TX 1005	Total Petroleum Hydrocarbons

Certificate number T104704398-08-TX. Accreditation applies to solid and chemical materials and non-potable water matrices.

Cardinal Laboratories is accredited through the State of Colorado Department of Public Health and Environment for:

Method EPA 552.2	Haloacetic Acids (HAA-5)
Method EPA 524.2	Total Trihalomethanes (TTHM)
Method EPA 524.4	Regulated VOCs (V2, V3)

Accreditation applies to public drinking water matrices.

This report meets NELAP requirements and is made up of a cover page, analytical results, and a copy of the original chain-of-custody. If you have any questions concerning this report, please feel free to contact me.

Sincerely,

Celey D. Keene

Lab Director/Quality Manager

Analytical Results For:

 Basin Environmental Service
 BEN J. ARGUIJO
 P.O. Box 301
 Lovington NM, 88260
 Fax To: (575) 396-1429

 Received: 03/02/2011
 Reported: 03/08/2011
 Project Name: POKER LAKE UNIT 158 FLOWLINE
 Project Number: AFE #24753
 Project Location: EDDY COUNTY, NEW MEXICO

 Sampling Date: 03/02/2011
 Sampling Type: Soil
 Sampling Condition: Cool & Intact
 Sample Received By: Jodi Henson

Sample ID: S EXC SEC 2 N WALL 5' (H100420-01)

Chloride, SM4500Cl-B			mg/kg		Analyzed By: HM				
Analyte	Result	Reporting Limit	Analyzed	Method Blank	BS	% Recovery	True Value QC	RPD	Qualifier
Chloride	16.0	16.0	03/04/2011	ND	432	108	400	3.77	
TPH 8015M			mg/kg		Analyzed By: CK				
Analyte	Result	Reporting Limit	Analyzed	Method Blank	BS	% Recovery	True Value QC	RPD	Qualifier
GRO C6-C10	<10.0	10.0	03/04/2011	ND	192	96.0	200	1.89	
DRO >C10-C28	<10.0	10.0	03/04/2011	ND	189	94.5	200	4.31	
EXT DRO >C28-C35	<10.0	10.0	03/04/2011	ND					
<hr/>									
Surrogate: 1-Chlorooctane	105 %	70-130							
Surrogate: 1-Chlorooctadecane	99.8 %	70-130							

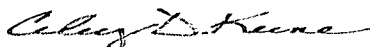
Sample ID: S EXC SEC 2 S WALL 5' (H100420-02)

Chloride, SM4500Cl-B			mg/kg		Analyzed By: HM				
Analyte	Result	Reporting Limit	Analyzed	Method Blank	BS	% Recovery	True Value QC	RPD	Qualifier
Chloride	32.0	16.0	03/04/2011	ND	432	108	400	3.77	
TPH 8015M			mg/kg		Analyzed By: CK				
Analyte	Result	Reporting Limit	Analyzed	Method Blank	BS	% Recovery	True Value QC	RPD	Qualifier
GRO C6-C10	<10.0	10.0	03/04/2011	ND	192	96.0	200	1.89	
DRO >C10-C28	<10.0	10.0	03/04/2011	ND	189	94.5	200	4.31	
EXT DRO >C28-C35	<10.0	10.0	03/04/2011	ND					
<hr/>									
Surrogate: 1-Chlorooctane	108 %	70-130							
Surrogate: 1-Chlorooctadecane	106 %	70-130							

Cardinal Laboratories

*=Accredited Analyte

PLEASE NOTE: Liability and Damages. Cardinal's liability and client's exclusive remedy for any claim arising, whether based in contract or tort, shall be limited to the amount paid by client for analyses. All claims, including those for negligence and any other cause whatsoever shall be deemed waived unless made in writing and received by Cardinal within thirty (30) days after completion of the applicable service. In no event shall Cardinal be liable for incidental or consequential damages, including, without limitation, business interruptions, loss of use, or loss of profits incurred by client, its subsidiaries, affiliates or successors arising out of or related to the performance of the services hereunder by Cardinal, regardless of whether such claim is based upon any of the above stated reasons or otherwise. Results relate only to the samples identified above. This report shall not be reproduced except in full with written approval of Cardinal Laboratories.



Celest D. Keene, Lab Director/Quality Manager

Analytical Results For:

 Basin Environmental Service
 BEN J. ARGUIJO
 P.O. Box 301
 Lovington NM, 88260
 Fax To: (575) 396-1429

Received:	03/02/2011	Sampling Date:	03/02/2011
Reported:	03/08/2011	Sampling Type:	Soil
Project Name:	POKER LAKE UNIT 158 FLOWLINE	Sampling Condition:	Cool & Intact
Project Number:	AFE #24753	Sample Received By:	Jodi Henson
Project Location:	EDDY COUNTY, NEW MEXICO		

Sample ID: S EXC SEC 2 FLOOR 5' (H100420-03)

Chloride, SM4500CI-B		mg/kg	Analyzed By: HM						
Analyte	Result	Reporting Limit	Analyzed	Method Blank	BS	% Recovery	True Value QC	RPD	Qualifier
Chloride	272	16.0	03/04/2011	ND	432	108	400	3.77	
TPH 8015M		mg/kg	Analyzed By: CK						
Analyte	Result	Reporting Limit	Analyzed	Method Blank	BS	% Recovery	True Value QC	RPD	Qualifier
GRO C6-C10	<10.0	10.0	03/04/2011	ND	192	96.0	200	1.89	
DRO >C10-C28	304	10.0	03/04/2011	ND	189	94.5	200	4.31	
EXT DRO >C28-C35	50.7	10.0	03/04/2011	ND					
<i>Surrogate: 1-Chlorooctane</i>									
	112 %	70-130							
<i>Surrogate: 1-Chlorooctadecane</i>									
	107 %	70-130							

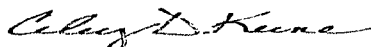
Sample ID: S EXC SEC STOCKPILE D (H100420-04)

Chloride, SM4500CI-B		mg/kg	Analyzed By: HM						
Analyte	Result	Reporting Limit	Analyzed	Method Blank	BS	% Recovery	True Value QC	RPD	Qualifier
Chloride	96.0	16.0	03/04/2011	ND	432	108	400	3.77	
TPH 8015M		mg/kg	Analyzed By: CK						
Analyte	Result	Reporting Limit	Analyzed	Method Blank	BS	% Recovery	True Value QC	RPD	Qualifier
GRO C6-C10	<10.0	10.0	03/04/2011	ND	192	96.0	200	1.89	
DRO >C10-C28	367	10.0	03/04/2011	ND	189	94.5	200	4.31	
EXT DRO >C28-C35	68.6	10.0	03/04/2011	ND					
<i>Surrogate: 1-Chlorooctane</i>									
	112 %	70-130							
<i>Surrogate: 1-Chlorooctadecane</i>									
	107 %	70-130							

Cardinal Laboratories

*=Accredited Analyte

PLEASE NOTE: Liability and Damages. Cardinal's liability and client's exclusive remedy for any claim arising, whether based in contract or tort, shall be limited to the amount paid by client for analyses. All claims, including those for negligence and any other cause whatsoever shall be deemed waived unless made in writing and received by Cardinal within thirty (30) days after completion of the applicable service. In no event shall Cardinal be liable for incidental or consequential damages, including, without limitation, business interruptions, loss of use, or loss of profits incurred by client, its subsidiaries, affiliates or successors arising out of or related to the performance of the services hereunder by Cardinal, regardless of whether such claim is based upon any of the above stated reasons or otherwise. Results relate only to the samples identified above. This report shall not be reproduced except in full with written approval of Cardinal Laboratories.



Celey D. Keene, Lab Director/Quality Manager

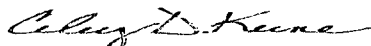
Notes and Definitions

ND	Analyte NOT DETECTED at or above the reporting limit
RPD	Relative Percent Difference
**	Samples not received at proper temperature of 6°C or below.
***	Insufficient time to reach temperature.
-	Chloride by SM4500Cl-B does not require samples be received at or below 6°C Samples reported on an as received basis (wet) unless otherwise noted on report

Cardinal Laboratories

*=Accredited Analyte

PLEASE NOTE: Liability and Damages. Cardinal's liability and client's exclusive remedy for any claim arising, whether based in contract or tort, shall be limited to the amount paid by client for analyses. All claims, including those for negligence and any other cause whatsoever shall be deemed waived unless made in writing and received by Cardinal within thirty (30) days after completion of the applicable service. In no event shall Cardinal be liable for incidental or consequential damages, including, without limitation, business interruptions, loss of use, or loss of profits incurred by client, its subsidiaries, affiliates or successors arising out of or related to the performance of the services hereunder by Cardinal, regardless of whether such claim is based upon any of the above stated reasons or otherwise. Results relate only to the samples identified above. This report shall not be reproduced except in full with written approval of Cardinal Laboratories.



Celey D. Keene, Lab Director/Quality Manager



BILL TO				ANALYSIS REQUEST														
Company Name: Basin Environmental Services Technologies LLC				P.O. #:														
Project Manager: Ben J. Aguayo				Company: BOPCO, LP														
Address: P.O. Box 301				Attn: Tony Savoie														
City: Lovington		State: NM Zip: 88260		Address: 522 W. Mermel														
Phone #: (575) 396-2378		Fax #: (575) 396-1429		City: Carlsbad														
Project #: AFE 24753		Project Owner: BOPCO, LP		State: NM Zip: 88220														
Project Name: Poker Lake Unit 158 Flowline				Phone #: (432) 556-8730														
Project Location: EDDY NM				Fax #:														
Sampler Name: Jody Walters																		
FOR LAB USE ONLY				MATRIX	PRESERV.	SAMPLING												
Lab I.D.	Sample I.D.	(G/RAB OR C/JOMP.) # CONTAINERS	GROUNDWATER WASTEWATER SOIL OIL SLUDGE OTHER :	ACID/BASE: ICE / COOL OTHER :	DATE	TIME												
HIDDH201	South Excavation Sec 2 North Wall S'	G 1	X	X	3-2-11	10:00am	X	X										
2	South Excavation Sec 2 South Wall S'	G 1	X	X	3-2-11	10:10 AM	X	X										
3	South Excavation Sec 2 Flood S'	G 1	X	X	3-2-11	10:12 AM	X	X										
4	South Excavation Sec Stockpile D	G 1	X	X	3-2-11	10:30 AM	X	X										
<small>PLEASE NOTE: Liability and Damages. Cardinal's liability and client's exclusive remedy for any claim arising whether based in contract or tort, shall be limited to the amount paid by the client for the analyses. All claims including those for negligence and any other cause whatsoever shall be deemed waived unless made in writing and received by Cardinal within 30 days after completion of the applicable service. In no event shall Cardinal be liable for incidental or consequential damages, including without limitation, business interruptions, loss of use, or loss of profits incurred by client, its subsidiaries, affiliates or successors arising out of or related to the performance of services hereunder by Cardinal, regardless of whether such claim is based upon any of the above stated reasons or otherwise.</small>																		
Relinquished By: [Signature]		Date: 3/2/11	Received By: Jodi Benson		Time: 3:34													
Relinquished By:		Date:	Received By:		Time:													
Delivered By: (Circle One)				Sample Condition		CHECKED BY: (Initials)												
Sampler - UPS - Bus - Other:				Cool Intact														
				<input checked="" type="checkbox"/> Yes <input type="checkbox"/> No	<input type="checkbox"/> Yes <input checked="" type="checkbox"/> No													
				Phone Result: <input type="checkbox"/> Yes <input type="checkbox"/> No Add'l Phone #: _____ Fax Result: <input type="checkbox"/> Yes <input type="checkbox"/> No Add'l Fax #: _____ REMARKS: <p>Please e-mail Results to pm@basinemv.com & TSavoie@BassPet.com</p>														

March 09, 2011

BEN J. ARGUJO

Basin Environmental Service

P.O. Box 301

Lovington, NM 88260

RE: POKER LAKE UNIT 158 FLOWLINE

Enclosed are the results of analyses for samples received by the laboratory on 03/04/11 16:20.

Cardinal Laboratories is accredited through Texas NELAP for:

Method SW-846 8021	Benzene, Toluene, Ethyl Benzene, and Total Xylenes
Method SW-846 8260	Benzene, Toluene, Ethyl Benzene, and Total Xylenes
Method TX 1005	Total Petroleum Hydrocarbons

Certificate number T104704398-08-TX. Accreditation applies to solid and chemical materials and non-potable water matrices.

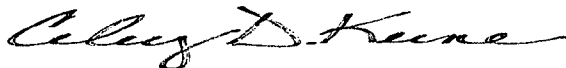
Cardinal Laboratories is accredited through the State of Colorado Department of Public Health and Environment for:

Method EPA 552.2	Haloacetic Acids (HAA-5)
Method EPA 524.2	Total Trihalomethanes (TTHM)
Method EPA 524.4	Regulated VOCs (V2, V3)

Accreditation applies to public drinking water matrices.

This report meets NELAP requirements and is made up of a cover page, analytical results, and a copy of the original chain-of-custody. If you have any questions concerning this report, please feel free to contact me.

Sincerely,



Celey D. Keene

Lab Director/Quality Manager

Analytical Results For:

Basin Environmental Service
BEN J. ARGUIJO
P.O. Box 301
Lovington NM, 88260
Fax To: (575) 396-1429

Received: 03/04/2011
Reported: 03/09/2011
Project Name: POKER LAKE UNIT 158 FLOWLINE
Project Number: AFE #24753
Project Location: EDDY COUNTY, NEW MEXICO

Sampling Date: 03/04/2011
Sampling Type: Soil
Sampling Condition: Cool & Intact
Sample Received By: Jodi Henson

Sample ID: S EXC SEC 3 STOCKPILE (H100436-01)

Chloride, SM4500Cl-B		mg/kg	Analyzed By: HM						
Analyte	Result	Reporting Limit	Analyzed	Method Blank	BS	% Recovery	True Value QC	RPD	Qualifier
Chloride	112	16.0	03/07/2011	ND	416	104	400	0.00	
TPH 8015M		mg/kg	Analyzed By: CK						
Analyte	Result	Reporting Limit	Analyzed	Method Blank	BS	% Recovery	True Value QC	RPD	Qualifier
GRO C6-C10	22.0	10.0	03/08/2011	ND	195	97.4	200	0.218	
DRO >C10-C28	320	10.0	03/08/2011	ND	196	98.2	200	2.31	
EXT DRO >C28-C35	54.1	10.0	03/08/2011	ND					

Surrogate: 1-Chlorooctane 113 % 70-130

Surrogate: 1-Chlorooctadecane 90.6 % 70-130

Sample ID: S EXC SEC 3 WEST WALL 5' (H100436-02)

Chloride, SM4500Cl-B		mg/kg	Analyzed By: HM						
Analyte	Result	Reporting Limit	Analyzed	Method Blank	BS	% Recovery	True Value QC	RPD	Qualifier
Chloride	80.0	16.0	03/07/2011	ND	416	104	400	0.00	
TPH 8015M		mg/kg	Analyzed By: CK						
Analyte	Result	Reporting Limit	Analyzed	Method Blank	BS	% Recovery	True Value QC	RPD	Qualifier
GRO C6-C10	<10.0	10.0	03/08/2011	ND	195	97.4	200	0.218	
DRO >C10-C28	<10.0	10.0	03/08/2011	ND	196	98.2	200	2.31	
EXT DRO >C28-C35	<10.0	10.0	03/08/2011	ND					


Surrogate: 1-Chlorooctane 106 % 70-130

Surrogate: 1-Chlorooctadecane 102 % 70-130

Cardinal Laboratories

*=Accredited Analyte

PLEASE NOTE: Liability and Damages. Cardinal's liability and client's exclusive remedy for any claim arising, whether based in contract or tort, shall be limited to the amount paid by client for analyses. All claims, including those for negligence and any other cause whatsoever shall be deemed waived unless made in writing and received by Cardinal within thirty (30) days after completion of the applicable service. In no event shall Cardinal be liable for incidental or consequential damages, including, without limitation, business interruptions, loss of use, or loss of profits incurred by client, its subsidiaries, affiliates or successors arising out of or related to the performance of the services hereunder by Cardinal, regardless of whether such claim is based upon any of the above stated reasons or otherwise. Results relate only to the samples identified above. This report shall not be reproduced except in full with written approval of Cardinal Laboratories.



Celey D. Keene, Lab Director/Quality Manager

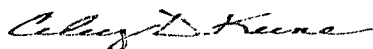
Notes and Definitions

ND	Analyte NOT DETECTED at or above the reporting limit
RPD	Relative Percent Difference
**	Samples not received at proper temperature of 6°C or below.
***	Insufficient time to reach temperature.
-	Chloride by SM4500Cl-B does not require samples be received at or below 6°C Samples reported on an as received basis (wet) unless otherwise noted on report

Cardinal Laboratories

* = Accredited Analyte

PLEASE NOTE: Liability and Damages. Cardinal's liability and client's exclusive remedy for any claim arising, whether based in contract or tort, shall be limited to the amount paid by client for analyses. All claims, including those for negligence and any other cause whatsoever shall be deemed waived unless made in writing and received by Cardinal within thirty (30) days after completion of the applicable service. In no event shall Cardinal be liable for incidental or consequential damages, including, without limitation, business interruptions, loss of use, or loss of profits incurred by client, its subsidiaries, affiliates or successors arising out of or related to the performance of the services hereunder by Cardinal, regardless of whether such claim is based upon any of the above stated reasons or otherwise. Results relate only to the samples identified above. This report shall not be reproduced except in full with written approval of Cardinal Laboratories.



Celest D. Keene, Lab Director/Quality Manager



CHAIN-OF-CUSTODY AND ANALYSIS REQUEST

101 East Marland, Hobbs, NM 88240
(575) 393-2326 FAX (575) 393-2476

Company Name: Basin Environmental Service Technologies, LLC		BILL TO		ANALYSIS REQUEST																							
Project Manager: Ben J. Arguio		P.O. #:																									
Address: P.O. Box 301		Company: EOPCO, LP																									
City: Lovington State: NM Zip: 88260		Attn: Tony Savoie																									
Phone #: (575) 396-2378 Fax #: (575) 396-1429		Address: 522 W. Mermod																									
Project #: AFE# 24753 Project Owner: BOPCO, LP		City: Carlsbad																									
Project Name: Parker Lake Unit 158 Flowline		State: NM Zip: 88220																									
Project Location: EDDY, NM.		Phone #: (432) 556-3730																									
Sampler Name: Jody Walters		Fax #:																									
FOR LAB USE ONLY	Lab I.D.	Sample I.D.	(G)RAB OR (C)OMP.	# CONTAINERS	MATRIX				PRESERV.	SAMPLING		BOSM Chlorides															
					GROUNDWATER	WASTEWATER	SOIL	OIL	SLUDGE	OTHER:	ACID/BASE:													ICE / COOL	OTHER:	DATE	TIME
	H101431	South Excavation Sec 3 Stock Pile	G	1			Y				X															3-4-11	10:00AM
	12	South Excavation Sec 3 West wall 5'	G	1			X				X															3-4-11	10:20AM

PLEASE NOTE: Liability and Damages Cardinal's liability and client's exclusive remedy for any claim arising whether based in contract or tort, shall be limited to the amount paid by the client for the analyses. All claims, including those for negligence and any other cause whatsoever shall be deemed waived unless made in writing and received by Cardinal within 30 days after completion of the applicable service. In no event shall Cardinal be liable for incidental or consequential damages, including without limitation, business interruptions, loss of use, or loss of profits incurred by client, its subsidiaries, affiliates or successors arising out of or related to the performance of services hereunder by Cardinal, regardless of whether such claim is based upon any of the above stated reasons or otherwise.

Relinquished By:	Date: 3/4/11 Time: 4:40	Received By:	Phone Result: <input type="checkbox"/> Yes <input type="checkbox"/> No Add'l Phone #:
Relinquished By:	Date:	Received By:	Fax Result: <input type="checkbox"/> Yes <input type="checkbox"/> No Add'l Fax #:
Delivered By: (Circle One)	Sample Condition: Cool <input type="checkbox"/> Intact <input type="checkbox"/>	CHECKED BY: (Initials)	REMARKS:
Sampler - UPS - Bus - Other:	20c <input type="checkbox"/> Yes <input type="checkbox"/> No		

Please email results to pm@basinenv.com
& TSavoie@BassPet.com

† Cardinal cannot accept verbal changes. Please fax written changes to 505-393-2476

March 01, 2011

BEN J. ARGUJO

Basin Environmental Service

P.O. Box 301

Lovington, NM 88260

RE: POKER LAKE UNIT 158 FLOWLINE

Enclosed are the results of analyses for samples received by the laboratory on 02/25/11 16:14.

Cardinal Laboratories is accredited through Texas NELAP for:

Method SW-846 8021	Benzene, Toluene, Ethyl Benzene, and Total Xylenes
Method SW-846 8260	Benzene, Toluene, Ethyl Benzene, and Total Xylenes
Method TX 1005	Total Petroleum Hydrocarbons

Certificate number T104704398-08-TX. Accreditation applies to solid and chemical materials and non-potable water matrices.

Cardinal Laboratories is accredited through the State of Colorado Department of Public Health and Environment for:

Method EPA 552.2	Haloacetic Acids (HAA-5)
Method EPA 524.2	Total Trihalomethanes (TTHM)
Method EPA 524.4	Regulated VOCs (V2, V3)

Accreditation applies to public drinking water matrices.

This report meets NELAP requirements and is made up of a cover page, analytical results, and a copy of the original chain-of-custody. If you have any questions concerning this report, please feel free to contact me.

Sincerely,



Celey D. Keene

Lab Director/Quality Manager

Analytical Results For:

Basin Environmental Service
BEN J. ARGUIJO
P.O. Box 301
Lovington NM, 88260
Fax To: (575) 396-1429

Received:	02/25/2011	Sampling Date:	02/25/2011
Reported:	03/01/2011	Sampling Type:	Soil
Project Name:	POKER LAKE UNIT 158 FLOWLINE	Sampling Condition:	Cool & Intact
Project Number:	AFE #24753	Sample Received By:	Jodi Henson
Project Location:	EDDY COUNTY, NEW MEXICO		

Sample ID: STOCK PILE 'A' (H100388-01)

Chloride, SM4500Cl-B		mg/kg		Analyzed By: HM						
Analyte	Result	Reporting Limit	Analyzed	Method Blank	BS	% Recovery	True Value QC	RPD	Qualifier	
Chloride	512	16.0	02/28/2011	ND	416	104	400	0.00		
TPH 8015M		mg/kg		Analyzed By: AB						
Analyte	Result	Reporting Limit	Analyzed	Method Blank	BS	% Recovery	True Value QC	RPD	Qualifier	
GRO C6-C10	<10.0	10.0	03/01/2011	ND	198	98.8	200	3.49		
DRO >C10-C28	151	10.0	03/01/2011	ND	202	101	200	3.04		
EXT DRO >C28-C35	27.0	10.0	03/01/2011	ND						
Surrogate: 1-Chlorooctane	100 %	70-130								
Surrogate: 1-Chlorooctadecane	101 %	70-130								

Sample ID: N EXC FLOOR 5' BGS (H100388-02)

Chloride, SM4500Cl-B		mg/kg	Analyzed By: HM							
Analyte	Result	Reporting Limit	Analyzed	Method Blank	BS	% Recovery	True Value QC	RPD	Qualifier	
Chloride	2320	16.0	02/28/2011	ND	416	104	400	0.00		
TPH 8015M		mg/kg	Analyzed By: AB							
Analyte	Result	Reporting Limit	Analyzed	Method Blank	BS	% Recovery	True Value QC	RPD	Qualifier	
GRO C6-C10	<10.0	10.0	03/01/2011	ND	198	98.8	200	3.49		
DRO >C10-C28	14.0	10.0	03/01/2011	ND	202	101	200	3.04		
EXT DRO >C28-C35	<10.0	10.0	03/01/2011	ND						
Surrogate: 1-Chlorooctane	103 %	70-130								
Surrogate: 1-Chlorooctadecane	104 %	70-130								

Cardinal Laboratories

*=Accredited Analyte

PLEASE NOTE: Liability and Damages. Cardinal's liability and client's exclusive remedy for any claim arising, whether based in contract or tort, shall be limited to the amount paid by client for analyses. All claims, including those for negligence and any other cause whatsoever shall be deemed waived unless made in writing and received by Cardinal within thirty (30) days after completion of the applicable service. In no event shall Cardinal be liable for incidental or consequential damages, including, without limitation, business interruptions, loss of use, or loss of profits incurred by client, its subsidiaries, affiliates or successors arising out of or related to the performance of the services hereunder by Cardinal, regardless of whether such claim is based upon any of the above stated reasons or otherwise. Results relate only to the samples identified above. This report shall not be reproduced except in full with written approval of Cardinal Laboratories.



Celey D. Keene, Lab Director/Quality Manager

Analytical Results For:

 Basin Environmental Service
 BEN J. ARGUIJO
 P.O. Box 301
 Lovington NM, 88260
 Fax To: (575) 396-1429

 Received: 02/25/2011
 Reported: 03/01/2011
 Project Name: POKER LAKE UNIT 158 FLOWLINE
 Project Number: AFE #24753
 Project Location: EDDY COUNTY, NEW MEXICO

 Sampling Date: 02/25/2011
 Sampling Type: Soil
 Sampling Condition: Cool & Intact
 Sample Received By: Jodi Henson

Sample ID: N EXC W WALL 5' BGS (H100388-03)

Chloride, SM4500Cl-B		mg/kg		Analyzed By: HM						
Analyte	Result	Reporting Limit	Analyzed	Method Blank	BS	% Recovery	True Value QC	RPD	Qualifier	
Chloride	240	16.0	02/28/2011	ND	416	104	400	0.00		
TPH 8015M		mg/kg		Analyzed By: AB						
Analyte	Result	Reporting Limit	Analyzed	Method Blank	BS	% Recovery	True Value QC	RPD	Qualifier	
GRO C6-C10	<10.0	10.0	03/01/2011	ND	198	98.8	200	3.49		
DRO >C10-C28	<10.0	10.0	03/01/2011	ND	202	101	200	3.04		
EXT DRO >C28-C35	<10.0	10.0	03/01/2011	ND						
Surrogate: 1-Chlorooctane	106 %	70-130								
Surrogate: 1-Chlorooctadecane	103 %	70-130								

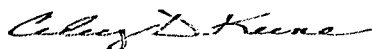
Sample ID: N EXC N WALL 5' BGS (H100388-04)

Chloride, SM4500Cl-B		mg/kg		Analyzed By: HM						
Analyte	Result	Reporting Limit	Analyzed	Method Blank	BS	% Recovery	True Value QC	RPD	Qualifier	
Chloride	304	16.0	02/28/2011	ND	416	104	400	0.00		
TPH 8015M		mg/kg		Analyzed By: AB						
Analyte	Result	Reporting Limit	Analyzed	Method Blank	BS	% Recovery	True Value QC	RPD	Qualifier	
GRO C6-C10	<10.0	10.0	03/01/2011	ND	198	98.8	200	3.49		
DRO >C10-C28	<10.0	10.0	03/01/2011	ND	202	101	200	3.04		
EXT DRO >C28-C35	<10.0	10.0	03/01/2011	ND						
Surrogate: 1-Chlorooctane	102 %	70-130								
Surrogate: 1-Chlorooctadecane	99.6 %	70-130								

Cardinal Laboratories

* = Accredited Analyte

PLEASE NOTE: Liability and Damages. Cardinal's liability and client's exclusive remedy for any claim arising, whether based in contract or tort, shall be limited to the amount paid by client for analyses. All claims, including those for negligence and any other cause whatsoever shall be deemed waived unless made in writing and received by Cardinal within thirty (30) days after completion of the applicable service. In no event shall Cardinal be liable for incidental or consequential damages, including, without limitation, business interruptions, loss of use, or loss of profits incurred by client, its subsidiaries, affiliates or successors arising out of or related to the performance of the services hereunder by Cardinal, regardless of whether such claim is based upon any of the above stated reasons or otherwise. Results relate only to the samples identified above. This report shall not be reproduced except in full with written approval of Cardinal Laboratories.



Celey D. Keene, Lab Director/Quality Manager

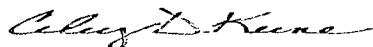
Notes and Definitions

ND	Analyte NOT DETECTED at or above the reporting limit
RPD	Relative Percent Difference
**	Samples not received at proper temperature of 6°C or below.
***	Insufficient time to reach temperature.
-	Chloride by SM4500Cl-B does not require samples be received at or below 6°C Samples reported on an as received basis (wet) unless otherwise noted on report

Cardinal Laboratories

* = Accredited Analyte

PLEASE NOTE: Liability and Damages. Cardinal's liability and client's exclusive remedy for any claim arising, whether based in contract or tort, shall be limited to the amount paid by client for analyses. All claims, including those for negligence and any other cause whatsoever shall be deemed waived unless made in writing and received by Cardinal within thirty (30) days after completion of the applicable service. In no event shall Cardinal be liable for incidental or consequential damages, including, without limitation, business interruptions, loss of use, or loss of profits incurred by client, its subsidiaries, affiliates or successors arising out of or related to the performance of the services hereunder by Cardinal, regardless of whether such claim is based upon any of the above stated reasons or otherwise. Results relate only to the samples identified above. This report shall not be reproduced except in full with written approval of Cardinal Laboratories.



Celey D. Keene, Lab Director/Quality Manager



Company Name: Basin Environmental Service Technologies LLC
Project Manager: Ben J Arguajo
Address: P.O. BOX 301
City: Lovington State: NM Zip: 88260
Phone #: (575) 396-2378 Fax #: (575) 396-1429
Project #: AFE # 24753 Project Owner: BOPCO, LP
Project Name: Poker Lake Unit 158 Flowline
Project Location: EDDY, NM.
Sampler Name: Jody Walters

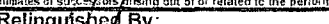


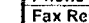
BILL TO

ANALYSIS REQUEST

P.O. #:
Company: BOPCO, LP
Attn: Tony Savoir
Address: 522 W. Mermol
City: Carlsbad
State: NM Zip: 88220
Phone #: (432) 556-8730
Fax #:

[illegible]

PLEASE NOTE: Liability and Damages. Cardinal's liability and client's exclusive remedy for any claim arising whether based in contract or tort, shall be limited to the amount paid by the client for the analyses. All claims, including those for negligence and any other cause whatsoever shall be deemed waived unless made in writing and received by Cardinal within 30 days after completion of the applicable service. In no event shall Cardinal be liable for incidental or consequential damages, including without limitation, business interruptions, loss of, or loss of profits incurred by client, its subsidiaries, affiliates or successors arising out of or related to the performance of services hereunder by Cardinal, regardless of whether such claim is based upon any of the above stated reasons or otherwise.

Relinquished By: 		Date: <u>2/25/11</u> Time: <u>4:14</u>		Received By: 		Phone Result: <input type="checkbox"/> Yes <input type="checkbox"/> No Fax Result: <input type="checkbox"/> Yes <input type="checkbox"/> No		Add'l Phone #: _____ Add'l Fax #: _____	
Relinquished By: 		Date: _____ Time: _____		Received By: _____		REMARKS: <div style="font-size: 1.5em; margin-top: 20px;">email to Ben + Tony</div>			
Delivered By: (Circle One) Sampler - UPS - Bus - Other:		Sample Condition Cool Intact <div style="display: flex; justify-content: space-around;"> 5.5°C <div> <input checked="" type="checkbox"/> Yes <input checked="" type="checkbox"/> Yes <input type="checkbox"/> No <input type="checkbox"/> No </div> </div>		CHECKED BY: (Initials) 					



PHONE (575) 393-2326 ° 101 E. MARLAND ° HOBBS, NM 88240

March 03, 2011

BEN J. ARGUIJO

Basin Environmental Service

P.O. Box 301

Lovington, NM 88260

RE: POKER LAKE UNIT 158 FLOWLINE

Enclosed are the results of analyses for samples received by the laboratory on 03/01/11 15:50.

Cardinal Laboratories is accredited through Texas NELAP for:

Method SW-846 8021	Benzene, Toluene, Ethyl Benzene, and Total Xylenes
Method SW-846 8260	Benzene, Toluene, Ethyl Benzene, and Total Xylenes
Method TX 1005	Total Petroleum Hydrocarbons

Certificate number T104704398-08-TX. Accreditation applies to solid and chemical materials and non-potable water matrices.

Cardinal Laboratories is accredited through the State of Colorado Department of Public Health and Environment for:

Method EPA 552.2	Haloacetic Acids (HAA-5)
Method EPA 524.2	Total Trihalomethanes (TTHM)
Method EPA 524.4	Regulated VOCs (V2, V3)

Accreditation applies to public drinking water matrices.

This report meets NELAP requirements and is made up of a cover page, analytical results, and a copy of the original chain-of-custody. If you have any questions concerning this report, please feel free to contact me.

Sincerely,

A handwritten signature in black ink that reads "Celey D. Keene". The signature is written in a cursive, flowing style.

Celey D. Keene

Lab Director/Quality Manager

Analytical Results For:

 Basin Environmental Service
 BEN J. ARGUIJO
 P.O. Box 301
 Lovington NM, 88260
 Fax To: (575) 396-1429

 Received: 03/01/2011
 Reported: 03/03/2011
 Project Name: POKER LAKE UNIT 158 FLOWLINE
 Project Number: AFE #24753
 Project Location: EDDY COUNTY, NEW MEXICO

 Sampling Date: 02/28/2011
 Sampling Type: Soil
 Sampling Condition: Cool & Intact
 Sample Received By: Jodi Henson

Sample ID: N EXC E WALL 5' (H100401-01)

Chloride, SM4500Cl-B			mg/kg		Analyzed By: HM				
Analyte	Result	Reporting Limit	Analyzed	Method Blank	BS	% Recovery	True Value QC	RPD	Qualifier
Chloride	240	16.0	03/02/2011	ND	432	108	400	0.00	
TPH 8015M			mg/kg		Analyzed By: AB				
Analyte	Result	Reporting Limit	Analyzed	Method Blank	BS	% Recovery	True Value QC	RPD	Qualifier
GRO C6-C10	<10.0	10.0	03/02/2011	ND	212	106	200	2.38	
DRO >C10-C28	<10.0	10.0	03/02/2011	ND	213	107	200	1.53	
EXT DRO >C28-C35	<10.0	10.0	03/02/2011	ND					

Surrogate: 1-Chlorooctane 117 % 70-130

Surrogate: 1-Chlorooctadecane 114 % 70-130

Sample ID: N EXC S WALL 5' (H100401-02)

Chloride, SM4500Cl-B			mg/kg		Analyzed By: HM				
Analyte	Result	Reporting Limit	Analyzed	Method Blank	BS	% Recovery	True Value QC	RPD	Qualifier
Chloride	192	16.0	03/02/2011	ND	416	104	400	3.77	
TPH 8015M			mg/kg		Analyzed By: AB				
Analyte	Result	Reporting Limit	Analyzed	Method Blank	BS	% Recovery	True Value QC	RPD	Qualifier
GRO C6-C10	<10.0	10.0	03/02/2011	ND	212	106	200	2.38	
DRO >C10-C28	<10.0	10.0	03/02/2011	ND	213	107	200	1.53	
EXT DRO >C28-C35	<10.0	10.0	03/02/2011	ND					

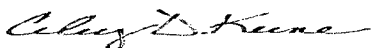
Surrogate: 1-Chlorooctane 113 % 70-130

Surrogate: 1-Chlorooctadecane 111 % 70-130

Cardinal Laboratories

*=Accredited Analyte

PLEASE NOTE: Liability and Damages. Cardinal's liability and client's exclusive remedy for any claim arising, whether based in contract or tort, shall be limited to the amount paid by client for analyses. All claims, including those for negligence and any other cause whatsoever shall be deemed waived unless made in writing and received by Cardinal within thirty (30) days after completion of the applicable service. In no event shall Cardinal be liable for incidental or consequential damages, including, without limitation, business interruptions, loss of use, or loss of profits incurred by client, its subsidiaries, affiliates or successors arising out of or related to the performance of the services hereunder by Cardinal, regardless of whether such claim is based upon any of the above stated reasons or otherwise. Results relate only to the samples identified above. This report shall not be reproduced except in full with written approval of Cardinal Laboratories.



Celey D. Keene, Lab Director/Quality Manager

Analytical Results For:

 Basin Environmental Service
 BEN J. ARGUIJO
 P.O. Box 301
 Lovington NM, 88260
 Fax To: (575) 396-1429

Received:	03/01/2011	Sampling Date:	02/28/2011
Reported:	03/03/2011	Sampling Type:	Soil
Project Name:	POKER LAKE UNIT 158 FLOWLINE	Sampling Condition:	Cool & Intact
Project Number:	AFE #24753	Sample Received By:	Jodi Henson
Project Location:	EDDY COUNTY, NEW MEXICO		

Sample ID: S EXC SEC 1 FLOOR 5' (H100401-03)

Chloride, SM4500Cl-B			mg/kg		Analyzed By: HM				
Analyte	Result	Reporting Limit	Analyzed	Method Blank	BS	% Recovery	True Value QC	RPD	Qualifier
Chloride	160	16.0	03/02/2011	ND	416	104	400	3.77	
TPH 8015M			mg/kg		Analyzed By: AB				
Analyte	Result	Reporting Limit	Analyzed	Method Blank	BS	% Recovery	True Value QC	RPD	Qualifier
GRO C6-C10	<10.0	10.0	03/02/2011	ND	212	106	200	2.38	
DRO >C10-C28	<10.0	10.0	03/02/2011	ND	213	107	200	1.53	
EXT DRO >C28-C35	<10.0	10.0	03/02/2011	ND					
<hr/>									
Surrogate: 1-Chlorooctane	113 %	70-130							
Surrogate: 1-Chlorooctadecane	111 %	70-130							

Sample ID: S EXC SEC 1 N WALL 5' (H100401-04)

Chloride, SM4500Cl-B			mg/kg		Analyzed By: HM				
Analyte	Result	Reporting Limit	Analyzed	Method Blank	BS	% Recovery	True Value QC	RPD	Qualifier
Chloride	48.0	16.0	03/02/2011	ND	416	104	400	3.77	
TPH 8015M			mg/kg		Analyzed By: AB				
Analyte	Result	Reporting Limit	Analyzed	Method Blank	BS	% Recovery	True Value QC	RPD	Qualifier
GRO C6-C10	<10.0	10.0	03/02/2011	ND	212	106	200	2.38	
DRO >C10-C28	<10.0	10.0	03/02/2011	ND	213	107	200	1.53	
EXT DRO >C28-C35	<10.0	10.0	03/02/2011	ND					
<hr/>									
Surrogate: 1-Chlorooctane	108 %	70-130							
Surrogate: 1-Chlorooctadecane	106 %	70-130							

Cardinal Laboratories

* = Accredited Analyte

PLEASE NOTE: Liability and Damages. Cardinal's liability and client's exclusive remedy for any claim arising, whether based in contract or tort, shall be limited to the amount paid by client for analyses. All claims, including those for negligence and any other cause whatsoever shall be deemed waived unless made in writing and received by Cardinal within thirty (30) days after completion of the applicable service. In no event shall Cardinal be liable for incidental or consequential damages, including, without limitation, business interruptions, loss of use, or loss of profits incurred by client, its subsidiaries, affiliates or successors arising out of or related to the performance of the services hereunder by Cardinal, regardless of whether such claim is based upon any of the above stated reasons or otherwise. Results relate only to the samples identified above. This report shall not be reproduced except in full with written approval of Cardinal Laboratories.



Celey D. Keene, Lab Director/Quality Manager

Analytical Results For:

Basin Environmental Service
BEN J. ARGUIJO
P.O. Box 301
Lovington NM, 88260
Fax To: (575) 396-1429

Received: 03/01/2011
Reported: 03/03/2011
Project Name: POKER LAKE UNIT 158 FLOWLINE
Project Number: AFE #24753
Project Location: EDDY COUNTY, NEW MEXICO

Sampling Date: 02/28/2011
Sampling Type: Soil
Sampling Condition: Cool & Intact
Sample Received By: Jodi Henson

Sample ID: S EXC SEC 1 S WALL 5' (H100401-05)

Chloride, SM4500Cl-B		mg/kg		Analyzed By: HM					
Analyte	Result	Reporting Limit	Analyzed	Method Blank	BS	% Recovery	True Value QC	RPD	Qualifier
Chloride	32.0	16.0	03/02/2011	ND	416	104	400	3.77	
TPH 8015M		mg/kg		Analyzed By: AB					
Analyte	Result	Reporting Limit	Analyzed	Method Blank	BS	% Recovery	True Value QC	RPD	Qualifier
GRO C6-C10	<10.0	10.0	03/02/2011	ND	212	106	200	2.38	
DRO >C10-C28	<10.0	10.0	03/02/2011	ND	213	107	200	1.53	
EXT DRO >C28-C35	<10.0	10.0	03/02/2011	ND					
Surrogate: 1-Chlorooctane	112 %	70-130							
Surrogate: 1-Chlorooctadecane	110 %	70-130							

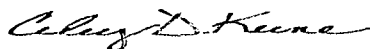
Sample ID: S EXC SEC 1 STOCKPILE 'C' (H100401-06)

Chloride, SM4500Cl-B		mg/kg		Analyzed By: HM						
Analyte	Result	Reporting Limit	Analyzed	Method Blank	BS	% Recovery	True Value QC	RPD	Qualifier	
Chloride	288	16.0	03/02/2011	ND	416	104	400	3.77		
TPH 8015M		mg/kg		Analyzed By: AB						
Analyte	Result	Reporting Limit	Analyzed	Method Blank	BS	% Recovery	True Value QC	RPD	Qualifier	
GRO C6-C10	<10.0	10.0	03/02/2011	ND	212	106	200	2.38		
DRO >C10-C28	128	10.0	03/02/2011	ND	213	107	200	1.53		
EXT DRO >C28-C35	20.1	10.0	03/02/2011	ND						
Surrogate: 1-Chlorooctane										
	108 %	70-130								
Surrogate: 1-Chlorooctadecane										
	105 %	70-130								

Cardinal Laboratories

*=Accredited Analyte

PLEASE NOTE: Liability and Damages. Cardinal's liability and client's exclusive remedy for any claim arising, whether based in contract or tort, shall be limited to the amount paid by client for analyses. All claims, including those for negligence and any other cause whatsoever shall be deemed waived unless made in writing and received by Cardinal within thirty (30) days after completion of the applicable service. In no event shall Cardinal be liable for incidental or consequential damages, including, without limitation, business interruptions, loss of use, or loss of profits incurred by client, its subsidiaries, affiliates or successors arising out of or related to the performance of the services hereunder by Cardinal, regardless of whether such claim is based upon any of the above stated reasons or otherwise. Results relate only to the samples identified above. This report shall not be reproduced except in full with written approval of Cardinal Laboratories.



Celey D. Keene, Lab Director/Quality Manager

Analytical Results For:

 Basin Environmental Service
 BEN J. ARGUIJO
 P.O. Box 301
 Lovington NM, 88260
 Fax To: (575) 396-1429

 Received: 03/01/2011
 Reported: 03/03/2011
 Project Name: POKER LAKE UNIT 158 FLOWLINE
 Project Number: AFE #24753
 Project Location: EDDY COUNTY, NEW MEXICO

 Sampling Date: 02/28/2011
 Sampling Type: Soil
 Sampling Condition: Cool & Intact
 Sample Received By: Jodi Henson

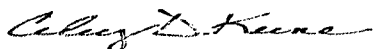
Sample ID: S EXC SEC 1 E WALL 4' (H100401-07)

Chloride, SM4500Cl-B		mg/kg		Analyzed By: HM						
Analyte	Result	Reporting Limit	Analyzed	Method Blank	BS	% Recovery	True Value QC	RPD	Qualifier	
Chloride	32.0	16.0	03/02/2011	ND	416	104	400	3.77		
TPH 8015M		mg/kg		Analyzed By: AB						
Analyte	Result	Reporting Limit	Analyzed	Method Blank	BS	% Recovery	True Value QC	RPD	Qualifier	
GRO C6-C10	<10.0	10.0	03/02/2011	ND	212	106	200	2.38		
DRO >C10-C28	<10.0	10.0	03/02/2011	ND	213	107	200	1.53		
EXT DRO >C28-C35	<10.0	10.0	03/02/2011	ND						
Surrogate: 1-Chlorooctane	114 %	70-130								
Surrogate: 1-Chlorooctadecane	111 %	70-130								

Cardinal Laboratories

* = Accredited Analyte

PLEASE NOTE: Liability and Damages. Cardinal's liability and client's exclusive remedy for any claim arising, whether based in contract or tort, shall be limited to the amount paid by client for analyses. All claims, including those for negligence and any other cause whatsoever shall be deemed waived unless made in writing and received by Cardinal within thirty (30) days after completion of the applicable service. In no event shall Cardinal be liable for incidental or consequential damages, including, without limitation, business interruptions, loss of use, or loss of profits incurred by client, its subsidiaries, affiliates or successors arising out of or related to the performance of the services hereunder by Cardinal, regardless of whether such claim is based upon any of the above stated reasons or otherwise. Results relate only to the samples identified above. This report shall not be reproduced except in full with written approval of Cardinal Laboratories.



Celest D. Keene, Lab Director/Quality Manager

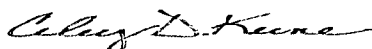
Notes and Definitions

ND	Analyte NOT DETECTED at or above the reporting limit
RPD	Relative Percent Difference
**	Samples not received at proper temperature of 6°C or below.
***	Insufficient time to reach temperature.
-	Chloride by SM4500Cl-B does not require samples be received at or below 6°C Samples reported on an as received basis (wet) unless otherwise noted on report

Cardinal Laboratories



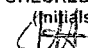
*=Accredited Analyte

PLEASE NOTE: Liability and Damages. Cardinal's liability and client's exclusive remedy for any claim arising, whether based in contract or tort, shall be limited to the amount paid by client for analyses. All claims, including those for negligence and any other cause whatsoever shall be deemed waived unless made in writing and received by Cardinal within thirty (30) days after completion of the applicable service. In no event shall Cardinal be liable for incidental or consequential damages, including, without limitation, business interruptions, loss of use, or loss of profits incurred by client, its subsidiaries, affiliates or successors arising out of or related to the performance of the services hereunder by Cardinal, regardless of whether such claim is based upon any of the above stated reasons or otherwise. Results relate only to the samples identified above. This report shall not be reproduced except in full with written approval of Cardinal Laboratories.



Celey D. Keene, Lab Director/Quality Manager



Company Name: Basin Environmental Service Technologies LLC Project Manager: Ben J. Arguino Address: P.O. Box 301 City: Lovington State: NM Zip: 88260 Phone #: (575) 396-2378 Fax #: (575) 396-1429 Project #: AFF # 24753 Project Owner: BOPCO, LP Project Name: Poker Lake Unit 158 Flowline Project Location: EDDY, NM. Sampler Name: Jody Walters				BILL TO P.O. #: Company: BOPCO, LP Attn: Tony Savoie Address: 522 W. Mermod City: Carlsbad State: NM Zip: 88220 Phone #: (432) 556-8730 Fax #:				ANALYSIS REQUEST																		
FOR LAB USE ONLY																										
Lab I.D.	Sample I.D.	(G/RAB OR C/JOMP.)	# CONTAINERS	GROUNDWATER	WASTEWATER	SOIL	OIL	SLUDGE	OTHER	ACID/BASE	ICE / COOL	OTHER	DATE	TIME												
H1DD401-1 North Excavation East wall 5'															<div style="display: flex; align-items: center;"> <div style="writing-mode: vertical-rl; transform: rotate(180deg); font-weight: bold; margin-right: 10px;">BO1507</div> <div style="writing-mode: vertical-rl; transform: rotate(180deg); font-weight: bold;">Chlorides</div> </div>											
2 North Excavation South Wall 5'																										
3 South Excavation Sec 1 Floor 5'																										
4 South Excavation Sec 1 North wall 5'																										
5 South Excavation Sec 1 South Wall 5'																										
6 South Excavation Sec 1 Stock Pile C"																										
7 South Excavation Sec 1 East wall 4'																										
PLEASE NOTE: Liability and Damages. Cardinal's liability and client's exclusive remedy for any claim arising whether based in contract or tort, shall be limited to the amount paid by the client for the analysis. All claims including those for negligence and any other cause whatsoever shall be deemed waived unless made in writing and received by Cardinal within 30 days after completion of the applicable service. In no event shall Cardinal be liable for incidental or consequential damages, including without limitation, business interruptions, loss of use, or loss of profits incurred by client, its subsidiaries, affiliates or successors arising out of or related to the performance of services hereunder by Cardinal, regardless of whether such claim is based upon any of the above stated reasons or otherwise.																										
Relinquished By:  Date: 3/1/11 Time: 3:50				Received By:  Date: Time:				Phone Result: <input type="checkbox"/> Yes <input type="checkbox"/> No Fax Result: <input type="checkbox"/> Yes <input type="checkbox"/> No Add'l Phone #: Add'l Fax #: REMARKS:				Please email results to bpn@basinenv.com TSavoie@BasPet.com														
Relinquished By: Date: Time:				Received By: Date: Time:																						
Delivered By: (Circle One) Sampler - UPS - Bus - Other:				Sample Condition Cool Intact <input type="checkbox"/> Yes <input checked="" type="checkbox"/> No <input type="checkbox"/> Yes <input type="checkbox"/> No				CHECKED BY: (Initials) 																		

March 08, 2011

BEN J. ARGUIJO

Basin Environmental Service

P.O. Box 301

Lovington, NM 88260

RE: POKER LAKE UNIT 158 FLOWLINE

Enclosed are the results of analyses for samples received by the laboratory on 03/02/11 15:34.

Cardinal Laboratories is accredited through Texas NELAP for:

Method SW-846 8021	Benzene, Toluene, Ethyl Benzene, and Total Xylenes
Method SW-846 8260	Benzene, Toluene, Ethyl Benzene, and Total Xylenes
Method TX 1005	Total Petroleum Hydrocarbons

Certificate number T104704398-08-TX. Accreditation applies to solid and chemical materials and non-potable water matrices.

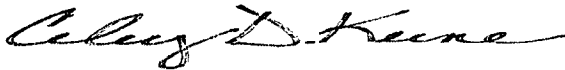
Cardinal Laboratories is accredited through the State of Colorado Department of Public Health and Environment for:

Method EPA 552.2	Haloacetic Acids (HAA-5)
Method EPA 524.2	Total Trihalomethanes (TTHM)
Method EPA 524.4	Regulated VOCs (V2, V3)

Accreditation applies to public drinking water matrices.

This report meets NELAP requirements and is made up of a cover page, analytical results, and a copy of the original chain-of-custody. If you have any questions concerning this report, please feel free to contact me.

Sincerely,



Celey D. Keene

Lab Director/Quality Manager

Analytical Results For:

 Basin Environmental Service
 BEN J. ARGUIJO
 P.O. Box 301
 Lovington NM, 88260
 Fax To: (575) 396-1429

Received:	03/02/2011	Sampling Date:	03/02/2011
Reported:	03/08/2011	Sampling Type:	Soil
Project Name:	POKER LAKE UNIT 158 FLOWLINE	Sampling Condition:	Cool & Intact
Project Number:	AFE #24753	Sample Received By:	Jodi Henson
Project Location:	EDDY COUNTY, NEW MEXICO		

Sample ID: S EXC SEC 2 N WALL 5' (H100420-01)

Chloride, SM4500Cl-B			mg/kg		Analyzed By: HM				
Analyte	Result	Reporting Limit	Analyzed	Method Blank	BS	% Recovery	True Value QC	RPD	Qualifier
Chloride	16.0	16.0	03/04/2011	ND	432	108	400	3.77	
TPH 8015M			mg/kg		Analyzed By: CK				
Analyte	Result	Reporting Limit	Analyzed	Method Blank	BS	% Recovery	True Value QC	RPD	Qualifier
GRO C6-C10	<10.0	10.0	03/04/2011	ND	192	96.0	200	1.89	
DRO >C10-C28	<10.0	10.0	03/04/2011	ND	189	94.5	200	4.31	
EXT DRO >C28-C35	<10.0	10.0	03/04/2011	ND					
<i>Surrogate: 1-Chlorooctane</i>									
	105 %	70-130							
<i>Surrogate: 1-Chlorooctadecane</i>									
	99.8 %	70-130							

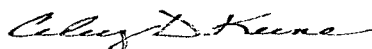
Sample ID: S EXC SEC 2 S WALL 5' (H100420-02)

Chloride, SM4500Cl-B			mg/kg		Analyzed By: HM				
Analyte	Result	Reporting Limit	Analyzed	Method Blank	BS	% Recovery	True Value QC	RPD	Qualifier
Chloride	32.0	16.0	03/04/2011	ND	432	108	400	3.77	
TPH 8015M			mg/kg		Analyzed By: CK				
Analyte	Result	Reporting Limit	Analyzed	Method Blank	BS	% Recovery	True Value QC	RPD	Qualifier
GRO C6-C10	<10.0	10.0	03/04/2011	ND	192	96.0	200	1.89	
DRO >C10-C28	<10.0	10.0	03/04/2011	ND	189	94.5	200	4.31	
EXT DRO >C28-C35	<10.0	10.0	03/04/2011	ND					
<i>Surrogate: 1-Chlorooctane</i>									
	108 %	70-130							
<i>Surrogate: 1-Chlorooctadecane</i>									
	106 %	70-130							

Cardinal Laboratories

* = Accredited Analyte

PLEASE NOTE: Liability and Damages. Cardinal's liability and client's exclusive remedy for any claim arising, whether based in contract or tort, shall be limited to the amount paid by client for analyses. All claims, including those for negligence and any other cause whatsoever shall be deemed waived unless made in writing and received by Cardinal within thirty (30) days after completion of the applicable service. In no event shall Cardinal be liable for incidental or consequential damages, including, without limitation, business interruptions, loss of use, or loss of profits incurred by client, its subsidiaries, affiliates or successors arising out of or related to the performance of the services hereunder by Cardinal, regardless of whether such claim is based upon any of the above stated reasons or otherwise. Results relate only to the samples identified above. This report shall not be reproduced except in full with written approval of Cardinal Laboratories.



Celey D. Keene, Lab Director/Quality Manager

Analytical Results For:

 Basin Environmental Service
 BEN J. ARGUIJO
 P.O. Box 301
 Lovington NM, 88260
 Fax To: (575) 396-1429

 Received: 03/02/2011
 Reported: 03/08/2011
 Project Name: POKER LAKE UNIT 158 FLOWLINE
 Project Number: AFE #24753
 Project Location: EDDY COUNTY, NEW MEXICO

 Sampling Date: 03/02/2011
 Sampling Type: Soil
 Sampling Condition: Cool & Intact
 Sample Received By: Jodi Henson

Sample ID: S EXC SEC 2 FLOOR 5' (H100420-03)

Chloride, SM4500CI-B		mg/kg	Analyzed By: HM						
Analyte	Result	Reporting Limit	Analyzed	Method Blank	BS	% Recovery	True Value QC	RPD	Qualifier
Chloride	272	16.0	03/04/2011	ND	432	108	400	3.77	
TPH 8015M		mg/kg	Analyzed By: CK						
Analyte	Result	Reporting Limit	Analyzed	Method Blank	BS	% Recovery	True Value QC	RPD	Qualifier
GRO C6-C10	<10.0	10.0	03/04/2011	ND	192	96.0	200	1.89	
DRO >C10-C28	304	10.0	03/04/2011	ND	189	94.5	200	4.31	
EXT DRO >C28-C35	50.7	10.0	03/04/2011	ND					
<hr/>									
Surrogate: 1-Chlorooctane	112 %	70-130							
Surrogate: 1-Chlorooctadecane	107 %	70-130							

Sample ID: S EXC SEC STOCKPILE D (H100420-04)

Chloride, SM4500CI-B		mg/kg	Analyzed By: HM						
Analyte	Result	Reporting Limit	Analyzed	Method Blank	BS	% Recovery	True Value QC	RPD	Qualifier
Chloride	96.0	16.0	03/04/2011	ND	432	108	400	3.77	
TPH 8015M		mg/kg	Analyzed By: CK						
Analyte	Result	Reporting Limit	Analyzed	Method Blank	BS	% Recovery	True Value QC	RPD	Qualifier
GRO C6-C10	<10.0	10.0	03/04/2011	ND	192	96.0	200	1.89	
DRO >C10-C28	367	10.0	03/04/2011	ND	189	94.5	200	4.31	
EXT DRO >C28-C35	68.6	10.0	03/04/2011	ND					
<hr/>									
Surrogate: 1-Chlorooctane	112 %	70-130							
Surrogate: 1-Chlorooctadecane	107 %	70-130							

Cardinal Laboratories

* = Accredited Analyte

PLEASE NOTE: Liability and Damages. Cardinal's liability and client's exclusive remedy for any claim arising, whether based in contract or tort, shall be limited to the amount paid by client for analyses. All claims, including those for negligence and any other cause whatsoever shall be deemed waived unless made in writing and received by Cardinal within thirty (30) days after completion of the applicable service. In no event shall Cardinal be liable for incidental or consequential damages, including, without limitation, business interruptions, loss of use, or loss of profits incurred by client, its subsidiaries, affiliates or successors arising out of or related to the performance of the services hereunder by Cardinal, regardless of whether such claim is based upon any of the above stated reasons or otherwise. Results relate only to the samples identified above. This report shall not be reproduced except in full with written approval of Cardinal Laboratories.



Celest D. Keene, Lab Director/Quality Manager

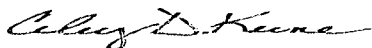
Notes and Definitions

ND	Analyte NOT DETECTED at or above the reporting limit
RPD	Relative Percent Difference
**	Samples not received at proper temperature of 6°C or below.
***	Insufficient time to reach temperature.
-	Chloride by SM4500Cl-B does not require samples be received at or below 6°C Samples reported on an as received basis (wet) unless otherwise noted on report

Cardinal Laboratories

*=Accredited Analyte

PLEASE NOTE: Liability and Damages. Cardinal's liability and client's exclusive remedy for any claim arising, whether based in contract or tort, shall be limited to the amount paid by client for analyses. All claims, including those for negligence and any other cause whatsoever shall be deemed waived unless made in writing and received by Cardinal within thirty (30) days after completion of the applicable service. In no event shall Cardinal be liable for incidental or consequential damages, including, without limitation, business interruptions, loss of use, or loss of profits incurred by client, its subsidiaries, affiliates or successors arising out of or related to the performance of the services hereunder by Cardinal, regardless of whether such claim is based upon any of the above stated reasons or otherwise. Results relate only to the samples identified above. This report shall not be reproduced except in full with written approval of Cardinal Laboratories.



Celest D. Keene, Lab Director/Quality Manager



Company Name: <u>Basin Environmental Services Technologies LLC</u>				BILL TO				ANALYSIS REQUEST																															
Project Manager: <u>Ben J. Arguio</u>				P.O. #:																																			
Address: <u>PO Box 301</u>				Company: <u>BOPCO, LP</u>																																			
City: <u>Livingston</u> State: <u>TX</u> Zip: <u>78260</u>				Attn: <u>Tony Savoie</u>																																			
Phone #: <u>(575) 396-2378</u> Fax #: <u>(575) 396-1429</u>				Address: <u>522 W. Mermod</u>																																			
Project #: <u>AFE 24753</u> Project Owner: <u>BOPCO, LP</u>				City: <u>Carlsbad</u>																																			
Project Name: <u>Poker Lake Unit 158 Flowline</u>				State: <u>NM</u> Zip: <u>88220</u>																																			
Project Location: <u>EDDY NM</u>				Phone #: <u>(432) 556-8730</u>																																			
Sampler Name: <u>Jody Walters</u>				Fax #:																																			
FOR LAB USE ONLY						MATRIX		PRESERV.		SAMPLING																													
Lab I.D.		Sample I.D.		# CONTAINERS		GROUNDWATER		WASTEWATER		SOIL		OIL		SLUDGE		OTHER:		ACID/BASE:		ICE/COOL		OTHER:		DATE		TIME													
HIDD4201		South Excavation Sec 2 North Wall 5'		1						X								X						3-2-11		10:00am													
2		South Excavation Sec 2 South Wall 5'		1						X								X						3-2-11		10:10am													
3		South Excavation Sec 2 Floor 5'		1						X								X						3-2-11		10:20am													
4		South Excavation Sec Stockpile D		1						X								X						3-2-11		10:30am													
<p>PLEASE NOTE: Liability and Damages. Cardinal's liability and client's exclusive remedy for any claim arising whether based in contract or tort, shall be limited to the amount paid by the client for the analyses. All claims including those for negligence and any other cause whatsoever shall be deemed waived unless made in writing and received by Cardinal within 30 days after completion of the applicable service. In no event shall Cardinal be liable for incidental or consequential damages, including without limitation, business interruptions, loss of use, or loss of profits incurred by client, its subsidiaries, affiliates or successors arising out of or related to the performance of services hereunder by Cardinal, regardless of whether such claim is based upon any of the above stated reasons or otherwise.</p>																																							
Relinquished By: <u>[Signature]</u>				Date: <u>3/2/11</u>		Received By: <u>Jodi Benson</u>				Phone Result: <input type="checkbox"/> Yes <input type="checkbox"/> No				Add'l Phone #:																									
Relinquished By:				Date:		Received By:				Fax Result: <input type="checkbox"/> Yes <input type="checkbox"/> No				Add'l Fax #:																									
				Time:						REMARKS: <u>Please e mail Results to pm@basinemu.com & TAsavoie@BassPet.com</u>																													
Delivered By: (Circle One)						Sample Condition						CHECKED BY:																											
Sampler - UPS - Bus - Other:						Cool <input checked="" type="checkbox"/> Intact <input checked="" type="checkbox"/>						(Initials)																											
						Yes <input type="checkbox"/> No <input type="checkbox"/>																																	

March 09, 2011

BEN J. ARGUIJO

Basin Environmental Service

P.O. Box 301

Lovington, NM 88260

RE: POKER LAKE UNIT 158 FLOWLINE

Enclosed are the results of analyses for samples received by the laboratory on 03/04/11 16:20.

Cardinal Laboratories is accredited through Texas NELAP for:

Method SW-846 8021	Benzene, Toluene, Ethyl Benzene, and Total Xylenes
Method SW-846 8260	Benzene, Toluene, Ethyl Benzene, and Total Xylenes
Method TX 1005	Total Petroleum Hydrocarbons

Certificate number T104704398-08-TX. Accreditation applies to solid and chemical materials and non-potable water matrices.

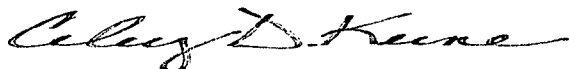
Cardinal Laboratories is accredited through the State of Colorado Department of Public Health and Environment for:

Method EPA 552.2	Haloacetic Acids (HAA-5)
Method EPA 524.2	Total Trihalomethanes (TTHM)
Method EPA 524.4	Regulated VOCs (V2, V3)

Accreditation applies to public drinking water matrices.

This report meets NELAP requirements and is made up of a cover page, analytical results, and a copy of the original chain-of-custody. If you have any questions concerning this report, please feel free to contact me.

Sincerely,



Celey D. Keene

Lab Director/Quality Manager

Analytical Results For:

Basin Environmental Service
BEN J. ARGUIJO
P.O. Box 301
Lovington NM, 88260
Fax To: (575) 396-1429

Received: 03/04/2011
Reported: 03/09/2011
Project Name: POKER LAKE UNIT 158 FLOWLINE
Project Number: AFE #24753
Project Location: EDDY COUNTY, NEW MEXICO

Sampling Date: 03/04/2011
Sampling Type: Soil
Sampling Condition: Cool & Intact
Sample Received By: Jodi Henson

Sample ID: S EXC SEC 3 STOCKPILE (H100436-01)

Chloride, SM4500Cl-B			mg/kg		Analyzed By: HM				
Analyte	Result	Reporting Limit	Analyzed	Method Blank	BS	% Recovery	True Value QC	RPD	Qualifier
Chloride	112	16.0	03/07/2011	ND	416	104	400	0.00	
TPH 8015M			mg/kg		Analyzed By: CK				
Analyte	Result	Reporting Limit	Analyzed	Method Blank	BS	% Recovery	True Value QC	RPD	Qualifier
GRO C6-C10	22.0	10.0	03/08/2011	ND	195	97.4	200	0.218	
DRO >C10-C28	320	10.0	03/08/2011	ND	196	98.2	200	2.31	
EXT DRO >C28-C35	54.1	10.0	03/08/2011	ND					
Surrogate: 1-Chlorooctane 113 % 70-130									
Surrogate: 1-Chlorooctadecane 90.6 % 70-130									

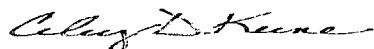
Sample ID: S EXC SEC 3 WEST WALL 5' (H100436-02)

Chloride, SM4500Cl-B			mg/kg		Analyzed By: HM				
Analyte	Result	Reporting Limit	Analyzed	Method Blank	BS	% Recovery	True Value QC	RPD	Qualifier
Chloride	80.0	16.0	03/07/2011	ND	416	104	400	0.00	
TPH 8015M			mg/kg		Analyzed By: CK				
Analyte	Result	Reporting Limit	Analyzed	Method Blank	BS	% Recovery	True Value QC	RPD	Qualifier
GRO C6-C10	<10.0	10.0	03/08/2011	ND	195	97.4	200	0.218	
DRO >C10-C28	<10.0	10.0	03/08/2011	ND	196	98.2	200	2.31	
EXT DRO >C28-C35	<10.0	10.0	03/08/2011	ND					
Surrogate: 1-Chlorooctane 106 % 70-130									
Surrogate: 1-Chlorooctadecane 102 % 70-130									

Cardinal Laboratories

* = Accredited Analyte

PLEASE NOTE: Liability and Damages. Cardinal's liability and client's exclusive remedy for any claim arising, whether based in contract or tort, shall be limited to the amount paid by client for analyses. All claims, including those for negligence and any other cause whatsoever shall be deemed waived unless made in writing and received by Cardinal within thirty (30) days after completion of the applicable service. In no event shall Cardinal be liable for incidental or consequential damages, including, without limitation, business interruptions, loss of use, or loss of profits incurred by client, its subsidiaries, affiliates or successors arising out of or related to the performance of the services hereunder by Cardinal, regardless of whether such claim is based upon any of the above stated reasons or otherwise. Results relate only to the samples identified above. This report shall not be reproduced except in full with written approval of Cardinal Laboratories.



Celey D. Keene, Lab Director/Quality Manager

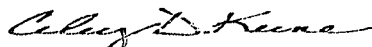
Notes and Definitions

ND	Analyte NOT DETECTED at or above the reporting limit
RPD	Relative Percent Difference
**	Samples not received at proper temperature of 6°C or below.
***	Insufficient time to reach temperature.
-	Chloride by SM4500Cl-B does not require samples be received at or below 6°C Samples reported on an as received basis (wet) unless otherwise noted on report

Cardinal Laboratories




*=Accredited Analyte

PLEASE NOTE: Liability and Damages. Cardinal's liability and client's exclusive remedy for any claim arising, whether based in contract or tort, shall be limited to the amount paid by client for analyses. All claims, including those for negligence and any other cause whatsoever shall be deemed waived unless made in writing and received by Cardinal within thirty (30) days after completion of the applicable service. In no event shall Cardinal be liable for incidental or consequential damages, including, without limitation, business interruptions, loss of use, or loss of profits incurred by client, its subsidiaries, affiliates or successors arising out of or related to the performance of the services hereunder by Cardinal, regardless of whether such claim is based upon any of the above stated reasons or otherwise. Results relate only to the samples identified above. This report shall not be reproduced except in full with written approval of Cardinal Laboratories.



Celey D. Keene, Lab Director/Quality Manager

[illegible]

Relinquished By: 		Date: 3/4/11	Received By: 	Phone Result: <input type="checkbox"/> Yes <input type="checkbox"/> No	Add'l Phone #:
		Time: 4:20		Fax Result: <input type="checkbox"/> Yes <input type="checkbox"/> No	Add'l Fax #:
Relinquished By:		Date:	Received By:	REMARKS:	
		Time:			
Delivered By: (Circle One)			Sample Condition	CHECKED BY:	
Sampler - UPS - Bus - Other:			Cool <input checked="" type="checkbox"/> Intact <input type="checkbox"/>	(Initials)	
			Yes <input checked="" type="checkbox"/> No <input type="checkbox"/>		

20c

Please email results to pm@basinenv.com
& TASavoie@BassPet.com

Page 4 of 4