

3R-1018

**Release Report/ General
Correspondence**

Cohn 29-10-25 #1

Date: 2014

District I
1625 N. French Dr., Hobbs, NM 88240
District II
811 S. First St., Artesia, NM 88210
District III
1000 Rio Brazos Road, Aztec, NM 87410
District IV
1220 S. St. Francis Dr., Santa Fe, NM 87505

State of New Mexico
Energy Minerals and Natural Resources

Oil Conservation Division
1220 South St. Francis Dr.
Santa Fe, NM 87505

Form C-141
Revised August 8, 2011

Submit 1 Copy to appropriate District Office in
accordance with 19.15.29 NMAC.

Release Notification and Corrective Action

OPERATOR

☐ Updated ☒ Final Report

Name of Company: Enterprise Field Services LLC	Contact: Thomas Long
Address: 614 Reilly Ave, Farmington, NM 87401	Telephone No. 505-599-2286
Facility Name: Cohn 29-10-25 #1	Facility Type: Gas gathering system pipeline

Surface Owner: Private	Mineral Owner BLM	API No.
------------------------	-------------------	---------

LOCATION OF RELEASE

Unit Letter A	Section 25	Township 29N	Range 10W	Feet from the 178	North South Line	Feet from the 885	East West Line	County San Juan
------------------	---------------	-----------------	--------------	----------------------	---------------------	----------------------	----------------	--------------------

Latitude 36.703146 Longitude 107.829618

RCVD OCT 10 '14
OIL CONS. DIV.
DIST. 3

NATURE OF RELEASE

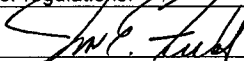
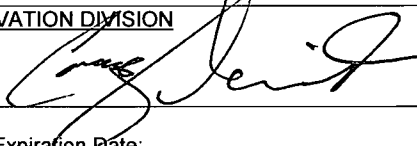
Type of Release: Natural gas and possible associated liquids	Volume of Release:	Volume Recovered: Unknown
Source of Release: Natural gas gathering pipeline	Date and Hour of Occurrence: Unknown	Date and Hour of Discovery: 11/08/13 at approximately 1:30 PM
Was Immediate Notice Given? <input type="checkbox"/> Yes <input type="checkbox"/> No <input checked="" type="checkbox"/> Not Required	If YES, To Whom?	
By Whom?	Date and Hour	
Was a Watercourse Reached? <input type="checkbox"/> Yes <input checked="" type="checkbox"/> No	If YES, Volume Impacting the Watercourse.	

If a Watercourse was Impacted, Describe Fully.*

Describe Cause of Problem and Remedial Action Taken.* Area technician discovered a pipeline leak on the well tie line for the Cohn 29-10-25 #1. The line was isolated, depressurized and lock out tag out was applied. Repairs for the pipeline were completed the week of December 2, 2013. Additional remediation was completed in April 2014 where approximately 720 cubic yards of hydrocarbon impacted soil was excavated and transported to an approved NMOCD land farm facility. The final excavation dimensions measured approximately sixty-five (65) feet long by twenty-five (25) wide by approximately twelve (12) where groundwater was encountered. Approximately 300 barrels water was pumped out of the excavation and transported to an approved NMOCD disposal facility. On August 14, 2104, eight (8) soil borings were advanced to total depths ranging from 12 to 13 feet below ground surface and completed as groundwater monitoring wells. Each monitoring wells was developed, purge and sampled. Laboratory analytical results indicate contaminant concentrations above New Mexico Water Quality Control Commission standards.

Describe Area Affected and Cleanup Action Taken.* Repairs for the pipeline were completed the week of December 2, 2013. Additional remediation was completed in April 2014 where approximately 720 cubic yards of hydrocarbon impacted soil was excavated and transported to an approved NMOCD land farm facility. The final excavation dimensions measured approximately sixty-five (65) feet long by twenty-five (25) wide by approximately twelve (12) where groundwater was encountered. Approximately 300 barrels water was pumped out of the excavation and transported to an approved NMOCD disposal facility. On August 14, 2104, eight (8) soil borings were advanced to total depths ranging from 12 to 13 feet below ground surface and completed as groundwater monitoring wells. Each monitoring wells was developed, purge and sampled. Laboratory analytical results indicate contaminant concentrations above New Mexico Water Quality Control Commission standards. A third party environmental corrective action report and supplemental investigation report is included with this "Final" c-141.

I hereby certify that the information given above is true and complete to the best of my knowledge and understand that pursuant to NMOCD rules and regulations all operators are required to report and/or file certain release notifications and perform corrective actions for releases which may endanger public health or the environment. The acceptance of a C-141 report by the NMOCD marked as "Final Report" does not relieve the operator of liability should their operations have failed to adequately investigate and remediate contamination that pose a threat to ground water, surface water, human health or the environment. In addition, NMOCD acceptance of a C-141 report does not relieve the operator of responsibility for compliance with any other federal, state, or local laws and/or regulations.

Signature: 	OIL CONSERVATION DIVISION	
Printed Name: Jon E. Fields	Approved by Environmental Specialist: 	
Title: Director, Environmental	Approval Date: 10/17/14	Expiration Date:
E-mail Address: jefields@eprod.com	Conditions of Approval: Submit Initial C-141	Attached <input type="checkbox"/>
Date: 10/7/2014	Phone: (713) 381-6684	

* Attach Additional Sheets If Necessary

to SANTA FE for ground water
Remediation CC: Aztec office.
32P-1018

99



CORRECTIVE ACTION REPORT

Property:

**Cohn #1 Pipeline Release (11/08/2014)
NE 1/4, S25 T29N R10W
San Juan County, New Mexico**

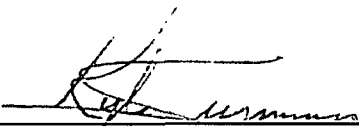
June 27, 2014

Apex Project No. 7030413G018

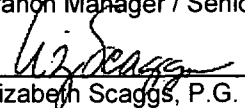
Prepared for:

**Enterprise Field Services LLC
614 Reilly Avenue
Farmington, NM 87401
Attn: Mr. Tom Long**

Prepared by:



Kyle Summers, C.P.G.
Branch Manager / Senior Geologist



Elizabeth Scaggs, P.G.
Senior Program Manager

TABLE OF CONTENTS

1.0 INTRODUCTION.....	1
1.1 Site Description & Background	1
1.2 Project Objective	1
2.0 SITE RANKING.....	1
3.0 RESPONSE ACTIONS	2
3.1 Soil Excavation Activities	2
3.2 Soil and Water Sampling Program.....	3
3.3 Laboratory Analytical Methods	3
4.0 DATA EVALUATION	4
4.1 Confirmation Soil Samples	4
4.2 Water Sample	4
5.0 FINDINGS AND RECOMMENDATIONS.....	5
6.0 STANDARD OF CARE, LIMITATIONS, AND RELIANCE.....	6

LIST OF APPENDICES

Appendix A:	Figure 1 – Topographic Map Figure 2 – Site Vicinity Map Figure 3 – Site Map with Sample Locations
Appendix B:	Executed C-138 Solid Waste Acceptance Forms
Appendix C:	Photographic Documentation
Appendix D:	Tables
Appendix E:	Laboratory Analytical Reports & Chain of Custody Documentation

CORRECTIVE ACTION REPORT

Cohn #1 Pipeline Release (11/08/2014)

NE 1/4, S25 T29N R10W
San Juan County, New Mexico

Apex Project No. 7030413G018

1.0 INTRODUCTION

1.1 Site Description & Background

The Cohn #1 pipeline release site is located within the Enterprise Field Services LLC (Enterprise) pipeline right-of-way (ROW) in the northeast (NE) ¼ of Section 25 in Township 29 North and Range 10 West in San Juan County, New Mexico, referred to hereinafter as the "Site" or "subject Site". The Site is located on private property owned by Mack S. Cohn and is surrounded by river terrace vegetation periodically interrupted with oil and gas gathering facilities, including one (1) Enterprise natural gas gathering pipeline which traverses the area from southeast to northwest.

During December, 2013, Enterprise shut in the Cohn #1 pipeline and on December 18th, 2013, initiated excavation activities at the Site in an attempt to locate and repair a subsurface leak. The leak was subsequently identified and repaired. An unknown quantity of natural gas was released from the pipeline as a result of internal and external corrosion. The leak was identified by vapor monitoring at the ground surface. No surface expression of the release was evident.

A topographic map depicting the location of the Site is included as Figure 1, and a Site Vicinity Map is included as Figure 2 in Appendix A.

1.2 Project Objective

The primary objective of the corrective actions was to reduce the concentration of chemicals of concern (COCs) in the on-Site soils to below the New Mexico Energy, Minerals, and Natural Resources Department (EMNRD), Oil Conservation Division (OCD) *Remediation Action Levels* using the New Mexico EMNRD OCD's *Guidelines for Remediation of Leaks, Spills and Releases* as guidance.

2.0 SITE RANKING

In accordance with the New Mexico ENMRD OCD's *Guidelines for Remediation of Leaks, Spills and Releases*, Apex TITAN, Inc. (Apex), formerly Southwest Geoscience, utilized the general site characteristics obtained during the completion of corrective action activities to determine the appropriate "ranking" for the Site. The ranking criteria and associated scoring are provided in the following table:

Ranking Criteria			Ranking Score
Depth to Groundwater	<50 feet	20	20*
	50 to 99 feet	10	
	>100 feet	0	
Wellhead Protection Area • <1,000 feet from a water source, or; <200 feet from private domestic water source.	Yes	20	0
	No	0	
Distance to Surface Water Body	<200 feet	20	10
	200 to 1,000 feet	10	
	>1,000 feet	0	
Total Ranking Score			30

*Groundwater was encountered during excavation activities.

Based on Apex's evaluation of the scoring criteria, the Site would have a Total Ranking Score of "30". This ranking is based on the following:

- The Site is 520 feet from an unnamed wash, resulting in a ranking of "10" for distance to surface water.
- No water wells were identified on the Office of the State Engineer website database within the search radius. However, groundwater was encountered during excavation activities at approximately 9.5 feet below grade surface (bgs), resulting in a ranking of "20" for depth to groundwater.
- No water sources were identified within the search radius.

3.0 RESPONSE ACTIONS

3.1 Soil Excavation Activities

During December, 2013, Enterprise shut in the Cohn #1 pipeline and on December 18th, 2013, initiated excavation activities at the Site in an attempt to locate and repair a subsurface leak. The leak was subsequently identified and repaired. An unknown quantity of natural gas was released from the pipeline as a result of internal and external corrosion. The leak was identified by vapor monitoring at the ground surface. No surface expression of the release was evident. During the corrective action activities, West States Energy Contractors provided heavy equipment and labor support, and Kyle Summers, an Apex environmental professional, provided environmental support.

Excavation activities associated with the pipeline repair were completed on December 18th, 2013. Soil samples (S-1 to S-8) were collected subsequent to the pipeline repair activities on December 18th, 2013. The analyses of these initial soil samples demonstrated that hydrocarbon affected soils remained in place at the Site.

Corrective action excavation proceeded at the Site on April 23rd, 2014. The excavation was extended in all four (4) cardinal directions from the initial release point, and groundwater was encountered during the excavation activities. Subsequent to encountering groundwater in the excavation, Enterprise elected to remove and properly dispose of an estimated 300 bbls of the potentially affected groundwater to help facilitate remediation efforts and maintain a safer and more stable working environment in, and around, the excavation.

The overall surface expression of the final excavation measured approximately 65 feet long by 25 feet wide, with a total depth of approximately 12 feet bgs.

The lithology encountered during the completion of corrective action activities consisted primarily of unconsolidated sands, silty sands, and silty clays.

During excavation activities, air in the breathing zone was monitored to ensure that the Occupational Safety and Health Administration (OSHA) Permissible Exposure Limit (PEL) of 200 parts per million (ppm) Time Weighted Average (TWA) for an 8-hour work day was not exceeded. Additionally, Enterprise monitored the excavation for explosive atmosphere conditions and oxygen deficiency prior to any entries into the excavation.

Approximately 720 cubic yards of hydrocarbon affected soils were transported to the Envirotech, Inc. landfarm near Hilltop, NM for disposal/remediation. The executed C-138 forms are provided in Appendix B. The excavation was ultimately backfilled with clean imported fill and contoured to surrounding grade.

Figure 3 is a site map that indicates the approximate location of the excavated area in relation to pertinent land features (Appendix A). Photographic documentation of the field activities is included in Appendix C.

3.2 Soil and Water Sampling Program

Apex screened head-space samples of Site soils with a photoionization detector (PID) fitted with a 10.6 eV lamp to estimate excavation limits.

Apex's soil sampling program included the collection of eighteen (18) final confirmation samples (S-9 through S-26) from the resulting excavation for laboratory analysis. Figure 3 depicts the approximate location of the excavated areas and shows the final confirmation sample locations in relation to the final excavation dimensions (Appendix A).

A water sample was collected from the open excavation and submitted for laboratory analysis, to evaluate the potential for groundwater impact at the Site. The water sample was collected utilizing a disposable bailer.

The samples were collected and placed in laboratory prepared glassware, labeled/sealed using the laboratory supplied labels, and placed on ice in a cooler, which was secured with a custody seal. The sample cooler and completed chain-of-custody forms were relinquished to Envirotech, Inc. Analytical Laboratory in Bloomfield, New Mexico, and/or Hall Environmental Analysis Laboratory in Albuquerque, New Mexico for analysis.

3.3 Laboratory Analytical Methods

The water sample and confirmation soil samples were analyzed for benzene, toluene, ethylbenzene, and total xylenes (BTEX) using EPA SW-846 Method #8021, and total petroleum hydrocarbons (TPH) gasoline range organics (GRO) and diesel range organics (GRO) using EPA SW-846 Method #8015.

Laboratory results are summarized in Table 1 and Table 2, included in Appendix D. The executed chain-of-custody form and laboratory data sheets are provided in Appendix E.

4.0 DATA EVALUATION

The Site is subject to regulatory oversight by the New Mexico EMNRD OCD. To address activities related to condensate releases, the New Mexico EMNRD OCD utilizes the *Guidelines for Remediation of Leaks, Spills and Releases* as guidance, in addition to the OCD rules, specifically NMAC 19.15.30 *Remediation*. These guidance documents establish investigation and abatement action requirements for sites subject to reporting and/or corrective action.

4.1 Confirmation Soil Samples

Apex compared the BTEX and TPH concentrations or reporting limits (RLs) associated with the final confirmation samples collected from the excavated area to the OCD *Remediation Action Levels* (RALs) for sites having a total ranking score of "30".

- The laboratory analyses of confirmation samples collected from soils remaining in place do not indicate benzene concentrations above laboratory RLs, which are below the OCD RAL.
- The laboratory analyses of the confirmation samples collected from soils remaining in place do not indicate total BTEX concentrations above the laboratory RLs, which are below the OCD RAL.
- The laboratory analyses of the confirmation sample collected from soils remaining in place indicate combined TPH GRO/DRO concentrations ranging from below the laboratory detection limits to 30.5 milligrams per Kilogram (mg/Kg) which are below the OCD RAL.

Confirmation sample results are provided in Table 1 in Appendix D.

4.2 Water Sample

Apex compared the BTEX concentrations associated with the water sample collected from the open excavation area to the New Mexico Water Quality Control Commission (WQCC) Groundwater Quality Standards (GQSs).

- The laboratory analysis of the water sample (WS-1) indicates a benzene concentration of 780 micrograms/Liter ($\mu\text{g/L}$), which exceeds the WQCC GQS of 10 $\mu\text{g/L}$.
- The laboratory analysis of WS-1 indicates a toluene concentration of 750 $\mu\text{g/L}$, which is equal to the WQCC GQS of 750 $\mu\text{g/L}$.
- The laboratory analysis of WS-1 indicates an ethylbenzene concentration of 60 $\mu\text{g/L}$, which is below the WQCC GQS of 750 $\mu\text{g/L}$.
- The laboratory analysis of WS-1 indicates a total xylenes concentration of 730 $\mu\text{g/L}$, which exceeds the WQCC GQS of 620 $\mu\text{g/L}$.

The laboratory analysis of water sample WS-1 identified a TPH GRO concentration of 5.2 milligrams per Liter (mg/L) and a TPH DRO concentration of 5.2 mg/L. TPH GRO/DRO do not have established WQCC GQSs.

It should be noted that due to the "mixing/blending" nature of excavation activities, as well as the characteristics of the native media comprising the local aquifer and vadose zone, open

excavation water sample analyses are sometimes not indicative of actual groundwater concentrations in the area.

5.0 FINDINGS AND RECOMMENDATIONS

The Cohn #1 pipeline release site is located within the Enterprise pipeline ROW in the NE ¼ of Section 25 in Township 29 North and Range 10 West in San Juan County, New Mexico. The Site is located on private property owned by Mack S. Cohn and is surrounded by river terrace vegetation periodically interrupted with oil and gas gathering facilities, including one (1) Enterprise natural gas gathering pipeline which traverses the area from southeast to northwest.

During December, 2013, Enterprise shut in the Cohn #1 pipeline and on December 18th, 2013, initiated excavation activities at the Site in an attempt to locate and repair a subsurface leak. The leak was subsequently identified and repaired. An unknown quantity of natural gas was released from the pipeline as a result of internal and external corrosion. No surface expression of the release was evident. Soil impact at the Site was remediated by physical removal (excavation).

- The primary objective of the corrective actions was to reduce the concentration of COCs in the on-Site soils to below the New Mexico EMNRD OCD RALs using the New Mexico EMNRD OCD's *Guidelines for Remediation of Leaks, Spills and Releases* as guidance.
- The lithology encountered during the completion of corrective action activities consisted primarily of unconsolidated silty-sands.
- The overall surface expression of the final excavation measured approximately 65 feet long by 25 feet wide, with a total depth of approximately 12 feet bgs.
- Groundwater was encountered during the corrective action excavation activities. A water sample was collected from the open excavation and submitted for laboratory analysis.
- **The laboratory analysis of the water sample indicates a benzene concentration of 780 micrograms/Liter (µg/L), which exceeds the WQCC GQS of 10 µg/L.**
- **The laboratory analysis of WS-1 indicates a toluene concentration of 750 µg/L, which is equal to the WQCC GQS of 750 µg/L.**
- **The laboratory analysis of WS-1 indicates a total xylenes concentration of 730 µg/L, which exceeds the WQCC GQS of 620 µg/L.**
- Prior to backfilling, eighteen (18) final confirmation samples were collected from the resulting excavation for laboratory analyses. Based on analytical results, soils remaining in place do not exhibit COC concentrations above the OCD RALs for a Site ranking of "30".
- A total of approximately 720 cubic yards of hydrocarbon affected soils were transported to the Envirotech, Inc. landfarm near Hilltop, NM for disposal/remediation. The excavation was ultimately backfilled with clean imported fill and contoured to surrounding grade.

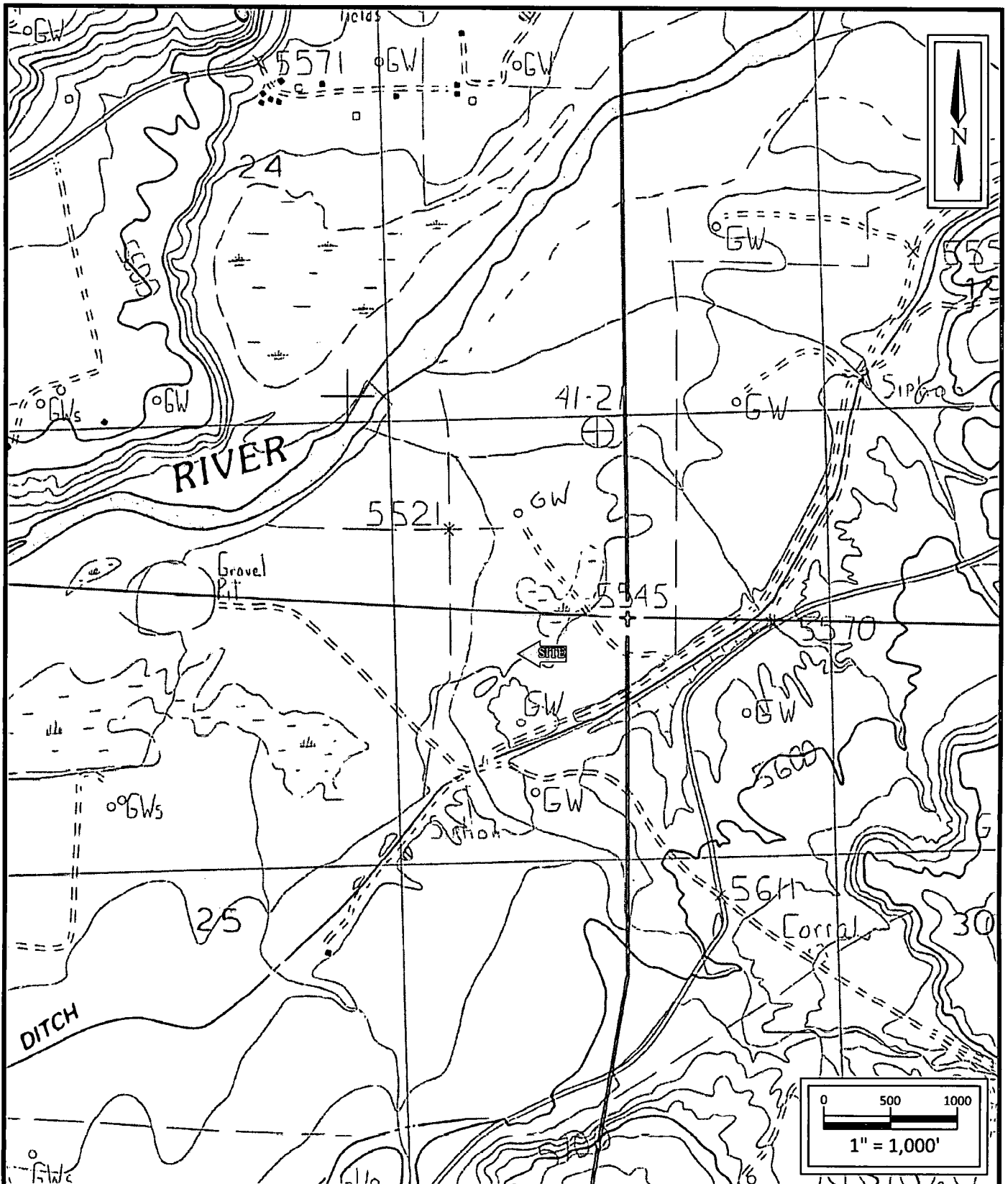
Based on the laboratory analytical results, no further action appears warranted regarding soil impact at the Site, however, groundwater may be affected by the petroleum hydrocarbon release.

6.0 STANDARD OF CARE, LIMITATIONS, AND RELIANCE

Apex's services were performed in accordance with standards customarily provided by a firm rendering the same or similar services in the area during the same time period. Apex makes no warranties, expressed or implied, as to the services performed hereunder. Additionally, Apex does not warrant the work of third parties supplying information used in the report (e.g. laboratories, regulatory agencies, or other third parties). This scope of services was performed in accordance with the scope of work agreed with the client.

Findings, conclusions and recommendations resulting from these services are based upon information derived from the on-Site activities and other services performed under this scope of work and it should be noted that this information is subject to change over time. Certain indicators of the presence of hazardous substances, petroleum products, or other constituents may have been latent, inaccessible, unobservable, or not present during these services, and Apex cannot represent that the Site contains no hazardous substances, toxic materials, petroleum products, or other latent conditions beyond those identified during this scope of services. Environmental conditions at other areas or portions of the Site may vary from those encountered at actual sample locations. Apex's findings and recommendations are based solely upon data available to Apex at the time of these services.

This report has been prepared for the exclusive use of Enterprise, and any authorization for use or reliance by any other party (except a governmental entity having jurisdiction over the Site) is prohibited without the expressed written authorization of Enterprise and Apex. Any unauthorized distribution or reuse is at the client's sole risk. Notwithstanding the foregoing, reliance by authorized parties will be subject to the terms, conditions and limitations stated in the proposal, the report, and Apex's Agreement. The limitation of liability defined in the agreement is the aggregate limit of Apex's liability to the client.



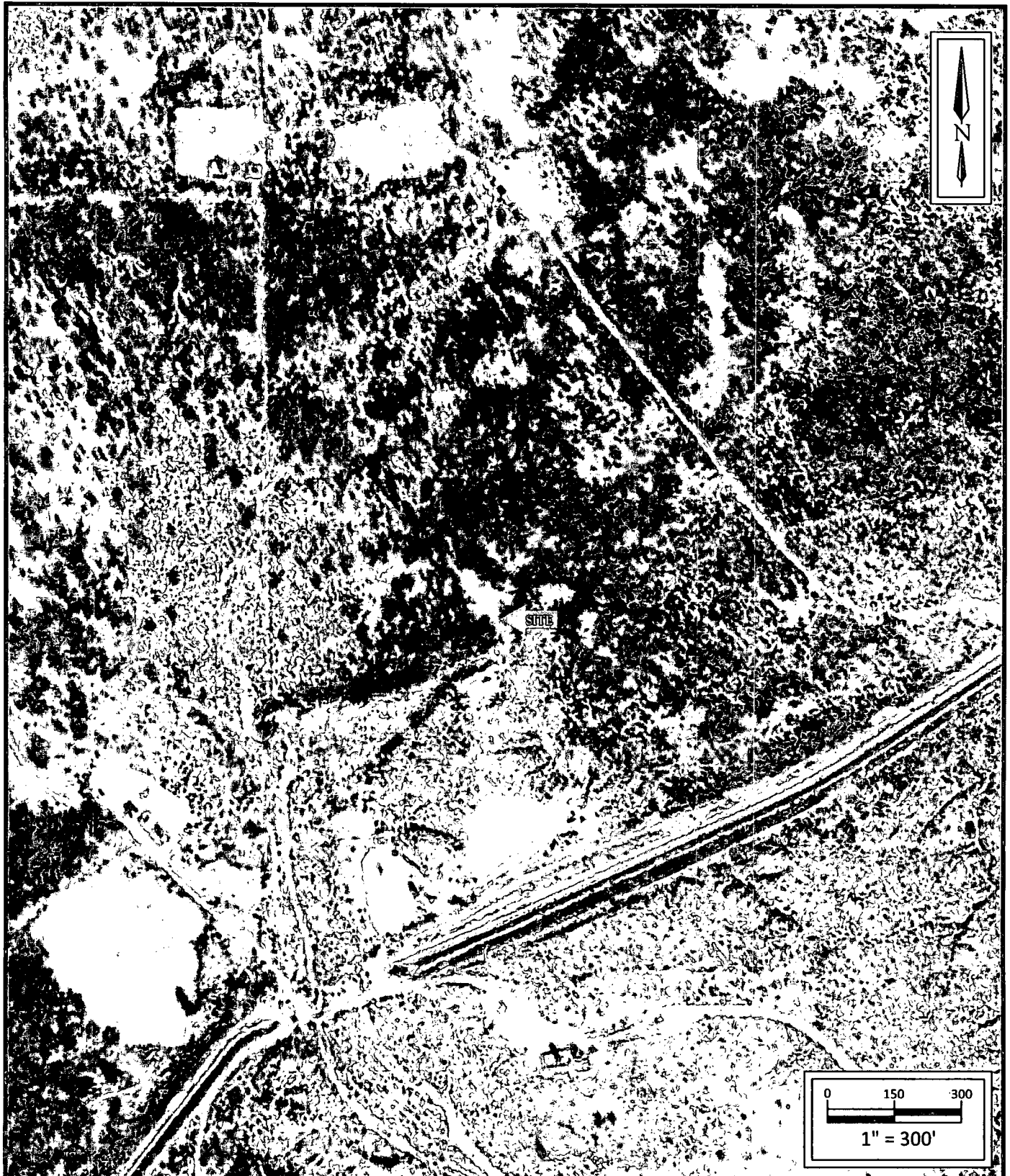
Cohn #1 Pipeline Release
 NE 1/4 S25 T29N R10W
 Blanco, San Juan County, NM
 36.703146N, -107.829618W

Project No. 7030413G018



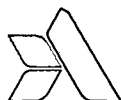
Apex TITAN, Inc.
 606 S. Rio Grande, Suite A
 Aztec, New Mexico 87410
 Phone: (505) 334-5200
www.apexcos.com
 A Subsidiary of Apex Companies, LLC

FIGURE 1
Topographic Map
 Blanco, NM Quadrangle
 1985



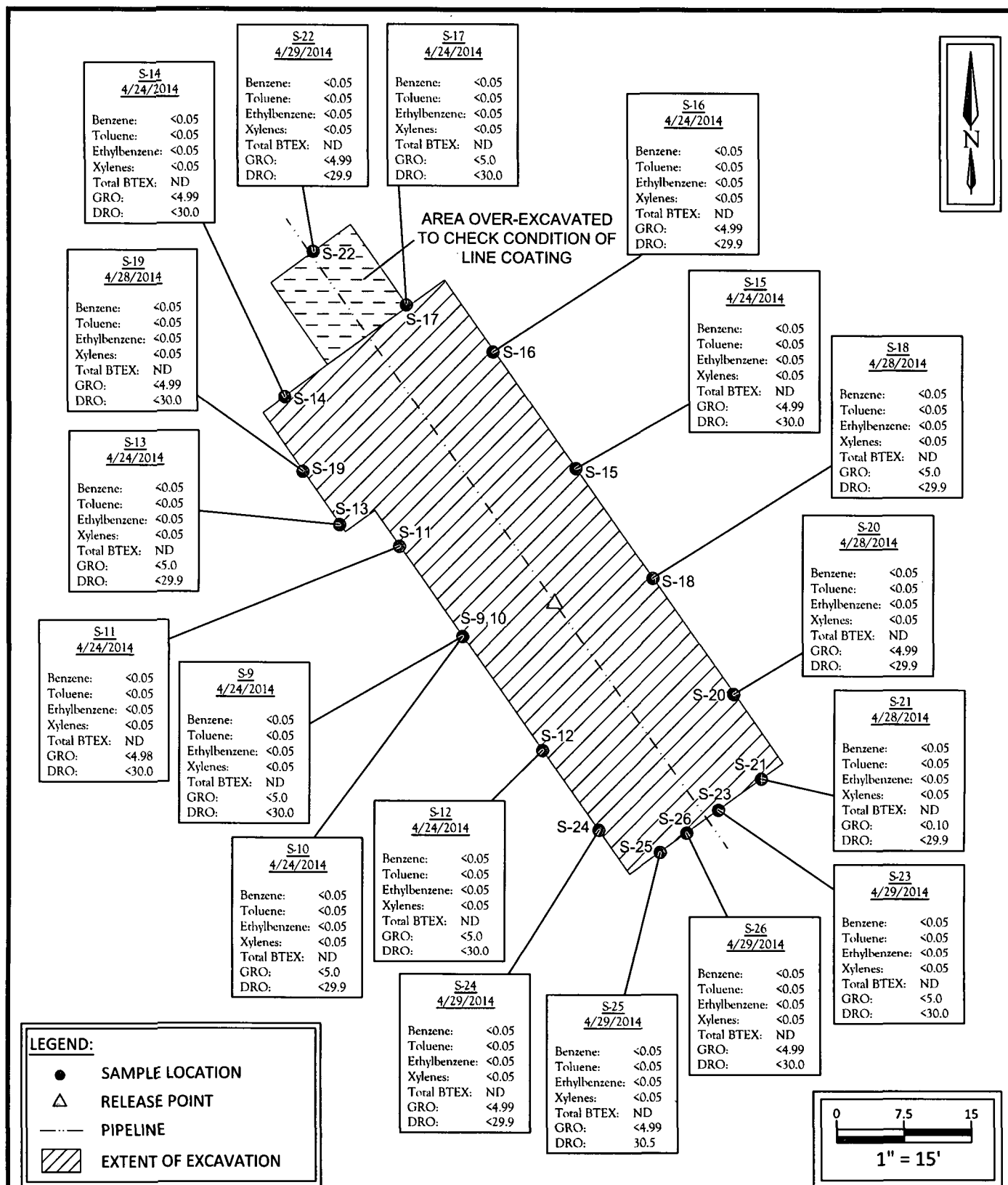
Cohn #1 Pipeline Release
 NE $\frac{1}{4}$ S25 T29N R10W
 Blanco, San Juan County, NM
 36.703146N, -107.829618W

Project No. 7030413G018



Apex TITAN, Inc.
 606 S. Rio Grande, Suite A
 Aztec, New Mexico 87410
 Phone: (505) 334-5200
www.apexcos.com
 A Subsidiary of Apex Companies, LLC

FIGURE 2
Site Vicinity Map
 2013 Aerial Photograph



Cohn #1 Pipeline Release
 NE $\frac{1}{4}$ S25 T29N R10W
 Blanco, San Juan County, NM
 36.703146N, -107.829618W

Project No. 7030413G018



Apex TITAN, Inc.
 606 S. Rio Grande, Suite A
 Aztec, New Mexico 87410
 Phone: (505) 334-5200
www.apexcos.com
 A Subsidiary of Apex Companies, LLC

FIGURE 3
Site Map with
Sample Locations

District I
1625 N. French Dr., Hobbs, NM 88240
District II
811 S. First St., Artesia, NM 88210
District III
1000 Rio Brazos Road, Aztec, NM 87410
District IV
1220 S. St. Francis Dr., Santa Fe, NM 87505

State of New Mexico
Energy Minerals and Natural Resources
Oil Conservation Division
1220 South St. Francis Dr.
Santa Fe, NM 87505

Form C-138
Revised August 1, 2011
*Surface Waste Management Facility Operator
and Generator shall maintain and make this
documentation available for Division inspection.

REQUEST FOR APPROVAL TO ACCEPT SOLID WASTE

1. Generator Name and Address: Enterprise Field Services, LLC, 614 Reilly Avenue, Farmington, NM 87401	April '14
2. Originating Site: Cohn 29-10-25 #1 Pipeline Release	
3. Location of Material (Street Address, City, State or ULSTR): Unit A Sec 25 T 29N R 10W; 36.70314, -107.829618, San Juan County, NM	
4. Source and Description of Waste: Hydrocarbon impacted soil from a pipeline excavation.	
5. Estimated Volume <u>200</u> <u>yd³</u> bbls Known Volume (to be entered by the operator at the end of the haul) <u>720</u> <u>yd³</u> bbls	
5. GENERATOR CERTIFICATION STATEMENT OF WASTE STATUS	
I, <u>Thomas Long</u> representative or authorized agent for <u>Enterprise Field Services, LLC</u> do hereby PRINT & SIGN NAME COMPANY NAME certify that according to the Resource Conservation and Recovery Act (RCRA) and the US Environmental Protection Agency's July 1988 regulatory determination, the above described waste is: (Check the appropriate classification)	
<input checked="" type="checkbox"/> RCRA Exempt: Oil field wastes generated from oil and gas exploration and production operations and are not mixed with non-exempt waste. <u>Operator Use Only: Waste Acceptance Frequency</u> <input type="checkbox"/> Monthly <input type="checkbox"/> Weekly <input type="checkbox"/> Per Load	
<input type="checkbox"/> RCRA Non-Exempt: Oil field waste which is non-hazardous that does not exceed the minimum standards for waste hazardous by characteristics established in RCRA regulations, 40 CFR 261.21-261.24, or listed hazardous waste as defined in 40 CFR, part 261, subpart D, as amended. The following documentation is attached to demonstrate the above-described waste is non-hazardous. (Check the appropriate items)	
<input type="checkbox"/> MSDS Information <input checked="" type="checkbox"/> RCRA Hazardous Waste Analysis <input type="checkbox"/> Process Knowledge <input type="checkbox"/> Other (Provide description in Box 4)	
GENERATOR 19.15.36.15 WASTE TESTING CERTIFICATION STATEMENT FOR LANDFARMS	
I, <u>Thomas Long</u> <u>4-23-14</u> , representative for <u>Enterprise Field Services, LLC</u> authorize <u>Envirotech, Inc.</u> to Generator Signature complete the required testing/sign the Generator Waste Testing Certification.	
I, <u>Kendra Running</u> , representative for <u>Envirotech</u> do hereby certify that representative samples of the oil field waste have been subjected to the paint filter test and tested for chloride content and that the samples have been found to conform to the specific requirements applicable to landfarms pursuant to Section 15 of 19.15.36 NMAC. The results of the representative samples are attached to demonstrate the above-described waste conform to the requirements of Section 15 of 19.15.36 NMAC.	
6. Transporter: West States Energy Contractors <u>Moss</u>	

OCD Permitted Surface Waste Management Facility

Name and Facility Permit #: Envirotech Inc. Soil Remediation Facility Permit # NM-01-0011
Address of Facility: #43 Road 7175, South of Bloomfield NM
Method of Treatment and/or Disposal:

☐ Evaporation ☐ Injection ☐ Treating Plant ☒ Landfarm ☐ Landfill ☐ Other

Waste Acceptance Status:

☒ APPROVED

☐ DENIED (Must Be Maintained As Permanent Record)

PRINT NAME: Kendra Running

TITLE: Waste Coordinator DATE: 4/23/14

SIGNATURE: Kendra Running
Surface Waste Management Facility Authorized Agent

TELEPHONE NO.: (505) 632-0615



Bill of Lading

MANIFEST # 46557DATE 4/23/14 JOB # 97657-0633

PHONE: (505) 632-0615 • 5796 U.S. HIGHWAY 64 • FARMINGTON, NEW MEXICO 87401

LOAD NO.	COMPLETE DESCRIPTION OF SHIPMENT						TRANSPORTING COMPANY				
	POINT OF ORIGIN	DESTINATION	MATERIAL	GRID	YDS	BBLS	COMPANY	TRK#	TIME	DRIVER SIGNATURE	
1	Enterprise Lohm 29-10-25 #1	LF II-5	cont. Soil	A21	10	-	Moss	47	1040	Lee Moss	
2	"	"	cont. Soil	A21	10	-	Moss	17	1040	Og Kobza	
3	"	"	cont. Soil	A21	10	-	Moss	15	1040	Yeh Bink	
4	"	"	cont. Soil	A21	10	-	Moss	47	1210	Lee Moss	
5	"	"	cont. Soil	A21	10	-	Moss	17	1215	Og Kobza	
6	"	"	cont. Soil	A21	10	-	Moss	15	1210	Yeh Bink	
7	"	"	cont. Soil	A21	10	-	Moss	47	1345	Lee Moss	
8	"	"	cont. Soil	A21	10	-	Moss	17	1346	Og Kobza	
9	"	"	cont. Soil	A21	10	-	Moss	15	1350	Yeh Bink	
10	"	"	"	A21	10	-	Moss	47	15:35	Lee Moss	
11	"	"	"	A-21	10	-	Moss	17	15:40	Og Kobza	
12	"	"	"	A-21	10	-	Moss	15	15:45	Yeh Bink	
RESULTS:		LANDFARM EMPLOYEE:	<div>Patrick Batenian 12D Blew</div> <div>ENTERED APR 29 2014</div>								
274	CHLORIDE TEST										3
	PAINT FILTER TEST										3
			Certification of above receipt & placement								

By signing as the driver/transporter, I certify the material hauled from the above location has not been added to or tampered with. I certify the material is from the above mentioned Generator/Point of Origin and that no additional material has been added or mixed into the load.

TRANSPORTER CO. Moss Excavation NAME Lee Moss SIGNATURE Lee Moss
COMPANY CONTACT Lee Moss PHONE 801-1803 DATE 4-23-14

Signatures required prior to distribution of the legal document.



Bill of Lading

MANIFEST # 46566 97057-0633
DATE 4/24/14 JOB # 92270-

PHONE: (505) 632-0615 • 5796 U.S. HIGHWAY 64 • FARMINGTON, NEW MEXICO 87401

LOAD NO.	COMPLETE DESCRIPTION OF SHIPMENT						TRANSPORTING COMPANY			
	POINT OF ORIGIN	DESTINATION	MATERIAL	GRID	YDS	BBLs	COMPANY	TRK#	TIME	DRIVER SIGNATURE
1	Enterprise Conn 29-10-25 #1	LFII-5	Cont. Soil	D-21	10	—	Moss	47	940	Lee Moss
2	u u	u u	u u	D-21	10	—	Moss	17	945	Qx Kobza
3	u u	u u	u u	D-21	10	—	Moss	15	945	Pat BME
4	u u	u u	u u	D-21	10	—	Moss	47	1120	Lee Moss
5	u u	u u	u u	D-21	10	—	Moss	17	1125	Qx Kobza
6	u u	u u	u u	D-21	10	—	Moss	15	1128	Pat BME
7	u u	u u	u u	D-21	10	—	Moss	47	1258	Lee Moss
8	u u	u u	u u	D-21	10	—	Moss	17	1259	Qx Kobza
9	u u	u u	u u	D-21	10	—	Moss	15	1301	Pat BME
10	u u	u u	u u	D-21	10	—	Moss	47	15:20	Lee Moss
11	u u	u u	u u	D-21	10	—	Moss	17	15:20	Qx Kobza
12	u u	u u	u u	D-21	10	—	Moss	15	15:25	Pat BME
RESULTS:		LANDFARM EMPLOYEE:		NOTES:						
271	CHLORIDE TEST	3	Certification of above receipt & placement		ENTERED APR 29 2014					
	PAINT FILTER TEST	3								

By signing as the driver/transporter, I certify the material hauled from the above location has not been added to or tampered with. I certify the material is from the above mentioned Generator/Point of Origin and that no additional material has been added or mixed into the load.

TRANSPORTER CO. Moss Excavation NAME Lee Moss SIGNATURE Lee Moss
COMPANY CONTACT Lee Moss PHONE 801-1803 DATE 4-24-14

Signatures required prior to distribution of the legal document.



Bill of Lading

MANIFEST # 46574
DATE 4/25/14 JOB # 97057-0633

PHONE: (505) 632-0615 • 5796 U.S. HIGHWAY 64 • FARMINGTON, NEW MEXICO 87401

LOAD NO.	COMPLETE DESCRIPTION OF SHIPMENT						TRANSPORTING COMPANY			
	POINT OF ORIGIN	DESTINATION	MATERIAL	GRID	YDS	BBLS	COMPANY	TRK#	TIME	DRIVER SIGNATURE
1	Enterprise Conn 29-10-25 #153	LFII-5	cont. Soil	C21	10	-	Moss	17	905	Q Kobza
2	"	"	cont. Soil	C21	10	-	Moss	15	910	Nate Bink
3	"	"	cont. Soil	C21	10	-	Moss	47	910	Lee Moss
4	"	"	cont. Soil	C21	10	-	Moss	47	1050	Lee Moss
5	"	"	cont. Soil	C21	10	-	Moss	17	1050	Q Kobza
6	"	"	cont. Soil	C21	10	-	Moss	15	1050	Nate Bink
7	"	"	cont. Soil	C21	10	-	Moss	17	1245	Q Kobza
8	"	"	cont. Soil	C21	10	-	Moss	47	1245	Lee Moss
9	"	"	cont. Soil	C21	10	-	Moss	15	1280	Nate Bink
10	"	"	cont. Soil	C21	10	-	Moss	47	1500	Lee Moss
11	"	"	cont. Soil	C21	10	-	Moss	17	1500	Q Kobza
12	"	"	cont. Soil	C21	10	-	Moss	15	1500	Nate Bink
RESULTS:		LANDFARM EMPLOYEE:		NOTES:						
4271	CHLORIDE TEST	3	Certification of above receipt & placement		ENTERED APR 29 2014					
	PAINT FILTER TEST	3								

By signing as the driver/transporter, I certify the material hauled from the above location has not been added to or tampered with. I certify the material is from the above mentioned Generator/Point of Origin and that no additional material has been added or mixed into the load.

TRANSPORTER CO. Moss Ex NAME Q Kobza SIGNATURE Q Kobza
COMPANY CONTACT Lee Moss PHONE 505 8011803 DATE 4/25/14
Signatures required prior to distribution of the legal document.



Bill of Lading

MANIFEST # 46585
DATE 4/28/14 JOB # 97057-0633

PHONE: (505) 632-0615 • 5796 U.S. HIGHWAY 64 • FARMINGTON, NEW MEXICO 87401

LOAD NO.	COMPLETE DESCRIPTION OF SHIPMENT						TRANSPORTING COMPANY			
	POINT OF ORIGIN	DESTINATION	MATERIAL	GRID	YDS	BBLS	COMPANY	TRK#	TIME	DRIVER SIGNATURE
1	Enterprise Cohn 29-10-25 #1	LFII-5	Cont. Soil	B-17	10	-	Moss	17	1050	OJ K0639
2	"	LFII-5	cont. Soil	B-17	10	-	Moss	47	1100	Lee Moss
3	"	LFII-5	cont. Soil	B-17	10	-	Moss	15	1100	Not a BMW
4	"	LFII-5	cont. Soil	B-17	10	-	Moss	47	1250	Lee Moss
5	"	LFII-5	cont. Soil	B-17	10	-	Moss	17	1255	OJ K0639
6	"	LFII-5	cont. Soil	B-17	10	-	Moss	15	1310	Not a BMW
7	"	LFII-5	cont. Soil	B-17	10	-	Moss	47	1435	Lee Moss
8	"	LFII-5	cont. Soil	B-17	10	-	Moss	17	1437	OJ K0639
9	"	LFII-5	cont. Soil	B-17	10	-	Moss	15	1443	Not a BMW
					90					
RESULTS:		LANDFARM EMPLOYEE:	P. Batenman EL			NOTES: ENTERED MAY 01 2014				
CHLORIDE TEST	2									
PAINT FILTER TEST	2	Certification of above receipt & placement								

By signing as the driver/transporter, I certify the material hauled from the above location has not been added to or tampered with. I certify the material is from the above mentioned Generator/Point of Origin and that no additional material has been added or mixed into the load.

TRANSPORTER CO. Moss Ex NAME OJ K0639 SIGNATURE OJ K0639
COMPANY CONTACT OJ K0639 PHONE 970 553 0393 DATE 4/28/14
Signatures required prior to distribution of the legal document.



Bill of Lading

MANIFEST # 46586
DATE 4/28/14 JOB # 97057-0633

PHONE: (505) 632-0615 • 5796 U.S. HIGHWAY 64 • FARMINGTON, NEW MEXICO 87401

LOAD NO.	COMPLETE DESCRIPTION OF SHIPMENT						TRANSPORTING COMPANY			
	POINT OF ORIGIN	DESTINATION	MATERIAL	GRID	YDS	BBLs	COMPANY	TRK#	TIME	DRIVER SIGNATURE
1	Envirotech	Enterprise	Clean Fill		10	-	Moss	17	1100	<i>Q. Kobza</i>
2	"	"	Clean Fill		10	-	Moss	47	1100	<i>Lee Moss</i>
3	"	"	Clean Fill		10	-	Moss	15	1100	<i>Pat B. M. K.</i>
4	"	"	Clean Fill		10	-	Moss	47	1250	<i>Lee Moss</i>
5	"	"	Clean Fill		10	-	Moss	17	1255	<i>Q. Kobza</i>
6	"	"	Clean Fill		10	-	Moss	15	1310	<i>Pat B. M. K.</i>
7	"	"	Clean Fill		10	-	Moss	47	1435	<i>Lee Moss</i>
8	"	"	Clean Fill		10	-	Moss	17	1437	<i>Q. Kobza</i>
9	"	"	Clean Fill		10	-	Moss	15	1443	<i>Pat B. M. K.</i>
					90					
RESULTS:		LANDFARM EMPLOYEE:		NOTES:						
<input checked="" type="checkbox"/>	CHLORIDE TEST	<input checked="" type="checkbox"/>	<i>Patrick S. Satorre</i>	ENTERED MAY 01 2014						
<input checked="" type="checkbox"/>	PAINT FILTER TEST	<input checked="" type="checkbox"/>	Certification of above receipt & placement							

By signing as the driver/transporter, I certify the material hauled from the above location has not been added to or tampered with. I certify the material is from the above mentioned Generator/Point of Origin and that no additional material has been added or mixed into the load.

TRANSPORTER CO. Moss Ex NAME Q. Kobza SIGNATURE *Q. Kobza*
COMPANY CONTACT DJ Kobza PHONE 9705530393 DATE 4/28/14

Signatures required prior to distribution of the legal document.



Bill of Lading

MANIFEST # 46592
DATE 4/29/14 JOB # 97057-0633

PHONE: (505) 632-0615 • 5796 U.S. HIGHWAY 64 • FARMINGTON, NEW MEXICO 87401

LOAD NO.	COMPLETE DESCRIPTION OF SHIPMENT						TRANSPORTING COMPANY				
	POINT OF ORIGIN	DESTINATION	MATERIAL	GRID	YDS	BBLS	COMPANY	TRK#	TIME	DRIVER SIGNATURE	
1	CONV ^{Enclave 32} 29-10-25 #10	LFII-5	CONV. Soil	B20	10	-	Moss	15	900	Nathan B. McKinney	
2	" "	LFII-5	CONV. Soil	B20	10	-	Moss	17	905	Lee Moss	
3	" "	LFII-5	" "	B20	10	-	Moss	47	1015	Lee Moss	
4	" "	LFII-5	" "	B20	10	-	Moss	15	1055	Nathan B. McKinney	
5	" "	LFII-5	" "	B20	10	-	Moss	17	1055	Lee Moss	
6	" "	LFII-5	" "	B20	10	-	Moss	47	1135	Lee Moss	
7	" "	LFII-5	" "	B20	10	-	Moss	15	1258	Nathan B. McKinney	
8	" "	LFII-5	" "	B20	10	-	Moss	17	1300	Lee Moss	
9	" "	LFII-5	" "	B20	10	-	Moss	47	1303	Lee Moss	
10	" "	LFII-5	" "	B20	10	-	Moss	15	1510	Nathan B. McKinney	
11	" "	LFII-5	" "	B20	10	-	Moss	17	1516	Lee Moss	
12	" "	LFII-5	" "	B20	10	-	Moss	47	1517	Lee Moss	
RESULTS:		LANDFARM EMPLOYEE:		NOTES:							
4271	CHLORIDE TEST	3	Patrick Bateman		120 Blw						
	PAINT FILTER TEST	3	Certification of above receipt & placement		ENTERED MAY 01 2014						

By signing as the driver/transporter, I certify the material hauled from the above location has not been added to or tampered with. I certify the material is from the above mentioned Generator/Point of Origin and that no additional material has been added or mixed into the load.

TRANSPORTER CO. MOSS EXHAUSTION NAME Nathan B. McKinney SIGNATURE Nathan B. McKinney
COMPANY CONTACT Nathan B. McKinney PHONE 505-320-8617 DATE 4-29-14

Signatures required prior to distribution of the legal document.



Bill of Lading

MANIFEST # 46593DATE 4/29/14 JOB # 97057-0633

PHONE: (505) 632-0615 • 5796 U.S. HIGHWAY 64 • FARMINGTON, NEW MEXICO 87401

LOAD NO.	COMPLETE DESCRIPTION OF SHIPMENT						TRANSPORTING COMPANY			
	POINT OF ORIGIN	DESTINATION	MATERIAL	GRID	YDS	BBLs	COMPANY	TRK#	TIME	DRIVER SIGNATURE
1	Envirotech	Enterprise Cohn 29-10-25 #10	Clean Fill		10	-	Moss	15	900	Nathan B. McKinney
2	"	"	"		10	-	Moss	17	905	og kobza
3	"	"	"		10	-	Moss	47	1015	Lee Moss
4	"	"	"		10	-	Moss	15	1055	Nathan B. McKinney
5	"	"	"		10	-	Moss	17	1055	og kobza
6	"	"	"		10	-	Moss	47	1135	Lee Moss
7	"	"	"		10	-	Moss	15	1251	Nathan B. McKinney
8	"	"	"		10	-	Moss	17	1300	og kobza
9	"	"	"		10	-	Moss	47	1303	Lee Moss
10	"	"	"		10	-	Moss	15	1510	Nathan B. McKinney
11	"	"	"		10	-	Moss	17	1510	og kobza
12	"	"	"		10	-	Moss	47	1510	Lee Moss
RESULTS:		LANDFARM EMPLOYEE:	NOTES:							
CHLORIDE TEST		Patrick J. Sotomayor 120 Bldg	ENTERED MAY 01 2014							
PAINT FILTER TEST										
Certification of above receipt & placement										

By signing as the driver/transporter, I certify the material hauled from the above location has not been added to or tampered with. I certify the material is from the above mentioned Generator/Point of Origin and that no additional material has been added or mixed into the load.

TRANSPORTER CO. MOSS EXCAVATION NAME Nathan B. McKinney SIGNATURE Nathan B. McKinney
COMPANY CONTACT Nathan B. McKinney PHONE 505-320-8217 DATE 4.29.14
Signatures required prior to distribution of the legal document.



Bill of Lading

MANIFEST # 46605DATE 4-30-14 JOB # 97057-0633

PHONE: (505) 632-0615 • 5796 U.S. HIGHWAY 64 • FARMINGTON, NEW MEXICO 87401

LOAD NO.	COMPLETE DESCRIPTION OF SHIPMENT						TRANSPORTING COMPANY			
	POINT OF ORIGIN	DESTINATION	MATERIAL	GRID	YDS	BBLS	COMPANY	TRK#	TIME	DRIVER SIGNATURE
1	Enterprise Cohn	LFII.5	CON'T SOIL	C-38	10	-	MOSS	15	915	Nathan B. McKinney
2	29-10-25-	"	"	C-38	10	-	MOSS	47	920	Lee Moss
3	1	"	"	C-38	10	-	MOSS	17	925	Q Kobza
4	"	"	"	C-38	10	-	MOSS	15	1130	Lee Moss
5	"	"	"	C-38	10	-	MOSS	47	1140	Lee Moss
6	"	"	"	C-38	10	-	MOSS	17	114	Q Kobza
7	"	"	"	C-38	10	-	MOSS	47	1330	Lee Moss
8	"	"	"	C-38	10	-	MOSS	17	1330	Q Kobza
9	"	"	"	C-38	10	-	MOSS	15	1335	Nathan B. McKinney
10	"	"	"	C-38	10	-	MOSS	47	1600	Lee Moss
11	"	"	"	C-38	10	-	MOSS	17	1600	Q Kobza
12	"	"	"	C-38	10	-	MOSS	15	1600	Nathan B. McKinney
RESULTS:		LANDFARM EMPLOYEE:		Certification of above receipt & placement		NOTES: ENTERED MAY 01 2014				
<271	CHLORIDE TEST	3								
	PAINT FILTER TEST	3								

By signing as the driver/transporter, I certify the material hauled from the above location has not been added to or tampered with. I certify the material is from the above mentioned Generator/Point of Origin and that no additional material has been added or mixed into the load.

TRANSPORTER CO. MOSS EX NAME Nathan B. McKinney SIGNATURE Nathan B. McKinney
COMPANY CONTACT Lee Moss PHONE 801-1803 DATE 4-30-14

Signatures required prior to distribution of the legal document.



Bill of Lading

MANIFEST # 46606
DATE 4-30-14 JOB # 97057-0633

PHONE: (505) 632-0615 • 5796 U.S. HIGHWAY 64 • FARMINGTON, NEW MEXICO 87401

LOAD NO.	COMPLETE DESCRIPTION OF SHIPMENT						TRANSPORTING COMPANY			
	POINT OF ORIGIN	DESTINATION	MATERIAL	GRID	YDS	BBLs	COMPANY	TRK#	TIME	DRIVER SIGNATURE
1	E:tech	Enterprise Clean	Fill	—	10	—	MOSS	15	915	Nathan B. McK
2	" "	29-10-25	SOIL	—	10	—	MOSS	47	920	Lee Moss
3	" "	" "	"	—	10	—	MOSS	17	925	Og Kobza
4	" "	" "	"	—	10	—	MOSS	15	1130	Nathan B. McK
5	" "	" "	"	—	10	—	MOSS	47	1140	Lee Moss
6	" "	" "	"	—	10	—	MOSS	17	1141	Og Kobza
7	" "	" "	"	—	10	—	MOSS	47	1330	Lee Moss
8	" "	" "	"	—	10	—	MOSS	17	1330	Og Kobza
9	" "	" "	"	—	10	—	MOSS	15	1335	Nathan B. McK
10	" "	" "	"	—	10	—	MOSS	47	1600	Lee Moss
11	" "	" "	"	—	10	—	MOSS	17	1600	Og Kobza
12	" "	" "	"	—	10	—	MOSS	15	1600	Nathan B. McK
RESULTS:		LANDFARM EMPLOYEE:	Gerry Robinson			NOTES: ENTERED MAY 01 2014				
✓	CHLORIDE TEST	✓								
✓	PAINT FILTER TEST	✓	Certification of above receipt & placement							

By signing as the driver/transporter, I certify the material hauled from the above location has not been added to or tampered with. I certify the material is from the above mentioned Generator/Point of Origin and that no additional material has been added or mixed into the load.

TRANSPORTER CO. MOSS EX. NAME Nathan B. McK SIGNATURE Nathan B. McK
COMPANY CONTACT Lee Moss PHONE 801-1803 DATE 4-30-14

Signatures required prior to distribution of the legal document.



envirotech

Bill of Lading

MANIFEST # 46619

DATE 5-1-14 JOB # 97057-0633

PHONE: (505) 632-0615 • 5796 U.S. HIGHWAY 64 • FARMINGTON, NEW MEXICO 87401

LOAD NO.	COMPLETE DESCRIPTION OF SHIPMENT						TRANSPORTING COMPANY			
	POINT OF ORIGIN	DESTINATION	MATERIAL	GRID	YDS	BBLS	COMPANY	TRK#	TIME	DRIVER SIGNATURE
1	Coan Enterprise 29-10-25 #1	LF2.5	Cont So.1	C-38	10	-	MOSS EX	15	0934	Nate BM King
2	"	"	"	C-38	10	-	MOSS EX	47	935	Lee Moss
3	"	"	"	C-36	10	-	MOSS EX	17	938	John Sca
					30					
RESULTS:		LANDFARM EMPLOYEE:	<div> <div>4271</div> <div>CHLORIDE TEST</div> <div>1</div> </div> <div> <div>PAINT FILTER TEST</div> <div>1</div> </div> <div> <div>Devin Robinson</div> <div>Blen</div> </div>							
			NOTES:							

By signing as the driver/transporter, I certify the material hauled from the above location has not been added to or tampered with. I certify the material is from the above mentioned Generator/Point of Origin and that no additional material has been added or mixed into the load.

TRANSPORTER CO. MOSS EXCAVATION NAME Nathan B. McKinnis SIGNATURE Nathan B. McKinnis
COMPANY CONTACT SEE MOSS PHONE 801-1803 DATE 5-1-14

Signatures required prior to distribution of the legal document.



Bill of Lading

MANIFEST # 46620

DATE 5-1-14 JOB # 97057-0633

PHONE: (505) 632-0615 • 5796 U.S. HIGHWAY 64 • FARMINGTON, NEW MEXICO 87401

LOAD NO.	COMPLETE DESCRIPTION OF SHIPMENT						TRANSPORTING COMPANY			
	POINT OF ORIGIN	DESTINATION	MATERIAL	GRID	YDS	BBLs	COMPANY	TRK#	TIME	DRIVER SIGNATURE
1	Emurotean Land Farm	Cabin Enterprise 24-10-25 IIIS	Clean F.I.I		10	/	MOSS EK	15	0934	Nathan P. Kinn
2	"	"	"		10	/	MOSS	47	0935	Leo Moss
3	"	"	"		10	/	MOSS	17	0938	of KOLBY
					30					
RESULTS:		LANDFARM EMPLOYEE: Devin Roberts				NOTES:				
/	CHLORIDE TEST	/	Certification of above receipt & placement							
/	PAINT FILTER TEST	/								

By signing as the driver/transporter, I certify the material hauled from the above location has not been added to or tampered with. I certify the material is from the above mentioned Generator/Point of Origin and that no additional material has been added or mixed into the load.

TRANSPORTER CO. MOSS EXCAVATION NAME Nathan B. McKinney SIGNATURE Nathan B. McKinney
COMPANY CONTACT LEE MOSS PHONE 802-1803 DATE 5-1-14

Signatures required prior to distribution of the legal document.

White - Company Records, Yellow - Billing, Pink - Customer

san juan reproduction 578-126

Photograph 1

Release area prior to excavation activities.



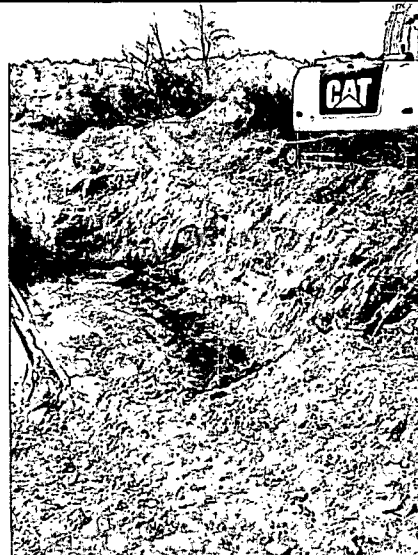
Photograph 2

Initial excavation after line repairs completed.



Photograph 3

Removing impact on west side of excavation. Note dark anaerobic material from natural decay processes.



Photograph 4

Removing impacted material from northwest portion of excavation.



Photograph 5

Excavation prior to stripping back soil along pipeline.



Photograph 6

General view of reclaimed area after excavation backfill.





TABLE 1
Cohn #1 Pipeline Release
SOIL ANALYTICAL SUMMARY

Sample I.D.	Date	Sample Depth (feet)	Benzene (mg/kg)	Toluene (mg/kg)	Ethylbenzene (mg/kg)	Xylenes (mg/kg)	Total BTEX (mg/kg)	TPH GRO (mg/kg)	TPH DRO (mg/kg)
New Mexico Entergy, Mineral & Natural Resources Department, Oil Conservation Division, Remediation Action Level			10	NE	NE	NE	50	100	
Samples for Soils Removed by Excavation									
S-1	12/18/2013		2.73	31.3	6.33	73.6	114	397	690
S-2	12/18/2013		8.11	78.7	15.4	165	267	806	3,850
S-3	12/18/2013		<0.50	24.1	1.69	60.1	85.9	489	4,190
S-4	12/18/2013		<0.05	<0.05	<0.05	<0.05	ND	6.23	285
S-5	12/18/2013		<0.50	5.93	<0.50	18.7	24.6	207	1,550
S-6	12/18/2013		<0.05	3.18	0.60	10.4	14.2	75.6	696
S-7	12/18/2013		<0.05	<0.05	<0.05	<0.05	ND	7.19	103
S-8	12/18/2013		<0.50	23.6	2.22	66.6	92.4	548	2,270
Stockpile Samples									
SP-1	4/7/2014		<0.12	<0.25	<0.25	3.2	3.2	120	1,900
SP-2	4/7/2014		<0.12	1.5	0.38	7.2	9.08	110	1,200
Confirmation Samples for Soils Remaining in Place									
S-9	4/24/2014		<0.05	<0.05	<0.05	<0.05	ND	<5.00	<30.0
S-10	4/24/2014		<0.05	<0.05	<0.05	<0.05	ND	<5.00	<29.9
S-11	4/24/2014		<0.05	<0.05	<0.05	<0.05	ND	<4.98	<30.0
S-12	4/24/2014		<0.05	<0.05	<0.05	<0.05	ND	<5.00	<30.0
S-13	4/24/2014		<0.05	<0.05	<0.05	<0.05	ND	<5.00	<29.9
S-14	4/24/2014		<0.05	<0.05	<0.05	<0.05	ND	<4.99	<30.0
S-15	4/24/2014		<0.05	<0.05	<0.05	<0.05	ND	<4.99	<30.0
S-16	4/24/2014		<0.05	<0.05	<0.05	<0.05	ND	<4.99	<29.9
S-17	4/24/2014		<0.05	<0.05	<0.05	<0.05	ND	<5.00	<30.0
S-18	4/28/2014		<0.05	<0.05	<0.05	<0.05	ND	<5.00	<29.9
S-19	4/28/2014		<0.05	<0.05	<0.05	<0.05	ND	<4.99	<30.0
S-20	4/28/2014		<0.05	<0.05	<0.05	<0.05	ND	<4.99	<29.9
S-21	4/28/2014		<0.05	<0.05	<0.05	<0.05	ND	<0.10	<29.9
S-22	4/29/2014		<0.05	<0.05	<0.05	<0.05	ND	<4.99	<29.9
S-23	4/29/2014		<0.05	<0.05	<0.05	<0.05	ND	<5.00	<30.0



TABLE 1
Cohn #1 Pipeline Release
SOIL ANALYTICAL SUMMARY

Sample I.D.	Date	Sample Depth (feet)	Benzene (mg/kg)	Toluene (mg/kg)	Ethylbenzene (mg/kg)	Xylenes (mg/kg)	Total BTEX (mg/kg)	TPH GRO (mg/kg)	TPH DRO (mg/kg)
New Mexico Entergy, Mineral & Natural Resources Department, Oil Conservation Division, Remediation Action Level			10	NE	NE	NE	50	100	
S-24	4/29/2014		<0.05	<0.05	<0.05	<0.05	ND	<4.99	<29.9
S-25	4/29/2014		<0.05	<0.05	<0.05	<0.05	ND	<4.99	30.5
S-26	4/29/2014		<0.05	<0.05	<0.05	<0.05	ND	<4.99	<30.0

Note: Concentrations in **bold** and yellow exceed the applicable OCD Remediation Action Level

NA = Not Analyzed

NE = Not Established

ND = Not Detected



TABLE 2
Cohn #1 Pipeline Release
WATER ANALYTICAL SUMMARY

Sample I.D.	Date	Benzene (µg/L)	Toluene (µg/L)	Ethylbenzene (µg/L)	Xylenes (µg/L)	TPH GRO (mg/L)	TPH DRO (mg/L)
New Mexico Water Quality Control Commission Groundwater Quality Standards		10	750	750	620	NE	NE
WS-1	4/29/2014	780	750	60	730	5.2	5.2

Note: Concentrations in **bold** and yellow exceed the applicable WQCC Standards

NA = Not Analyzed

NE = Not Established



Analytical Report

Report Summary

Client: Enterprise Products

Chain Of Custody Number: 16451

Samples Received: 12/18/2013 3:36:00PM

Job Number: 03022-0001

Work Order: P312087

Project Name/Location: Cohn #1

Entire Report Reviewed By:

A handwritten signature in black ink, appearing to read 'Tim Cain'.

Tim Cain, Laboratory Manager

Date: 12/20/13

The results in this report apply to the samples submitted to Envirotech's Analytical Laboratory and were analyzed in accordance with the chain of custody document supplied by you, the client, and as such are for your exclusive use only. The results in this report are based on the sample as received unless otherwise noted. Partial or incomplete reproduction of this report is prohibited, unless approved by Envirotech, Inc. If you have any questions regarding this analytical report, please don't hesitate to contact Envirotech's Laboratory Staff.



Enterprise Products
614 Reilly Ave
Farmington NM, 87401

Project Name: Cohn #1
Project Number: 03022-0001
Project Manager: Kyle Summers-SW Geoscience

Reported:
20-Dec-13 10:55

Analytical Report for Samples

Client Sample ID	Lab Sample ID	Matrix	Sampled	Received	Container
S-1	P312087-01A	Soil	12/18/13	12/18/13	Glass Jar, 4 oz.
S-2	P312087-02A	Soil	12/18/13	12/18/13	Glass Jar, 4 oz.
S-3	P312087-03A	Soil	12/18/13	12/18/13	Glass Jar, 4 oz.
S-4	P312087-04A	Soil	12/18/13	12/18/13	Glass Jar, 4 oz.
S-5	P312087-05A	Soil	12/18/13	12/18/13	Glass Jar, 4 oz.
S-6	P312087-06A	Soil	12/18/13	12/18/13	Glass Jar, 4 oz.
S-7	P312087-07A	Soil	12/18/13	12/18/13	Glass Jar, 4 oz.
S-8	P312087-08A	Soil	12/18/13	12/18/13	Glass Jar, 4 oz.

Partial or incomplete reproduction of this report is prohibited, unless approved by Envirotech, Inc.

5796 US Highway 64, Farmington, NM 87401

Three Springs - 65 Mercado Street, Suite 115, Durango, CO 81301

Ph (505) 632-0615 Fx (505) 632-1865

Ph (970) 259-0615 Fr (800) 362-1879

envirotech-inc.com
laboratory@envirotech-inc.com

Enterprise Products 614 Reilly Ave Farmington NM, 87401	Project Name: Cohn #1 Project Number: 03022-0001 Project Manager: Kyle Summers-SW Geoscience	Reported: 20-Dec-13 10:55
---	--	------------------------------

S-1
P312087-01 (Solid)

Analyte	Result	Reporting		Units	Dilution	Batch	Prepared	Analyzed	Method	Notes
		Limit								
Volatile Organics by EPA 8021										
Benzene	2.73	0.05	mg/kg	1		1351031	12/18/13	12/19/13	EPA 8021B	
Toluene	31.3	0.05	mg/kg	1		1351031	12/18/13	12/19/13	EPA 8021B	
Ethylbenzene	6.33	0.05	mg/kg	1		1351031	12/18/13	12/19/13	EPA 8021B	
p,m-Xylene	59.6	0.05	mg/kg	1		1351031	12/18/13	12/19/13	EPA 8021B	
o-Xylene	14.0	0.05	mg/kg	1		1351031	12/18/13	12/19/13	EPA 8021B	
Total Xylenes	73.6	0.05	mg/kg	1		1351031	12/18/13	12/19/13	EPA 8021B	
Total BTEX	114	0.05	mg/kg	1		1351031	12/18/13	12/19/13	EPA 8021B	
Surrogate: Bromochlorobenzene		182 %		80-120		1351031	12/18/13	12/19/13	EPA 8021B	S-02
Surrogate: 1,3-Dichlorobenzene		316 %		80-120		1351031	12/18/13	12/19/13	EPA 8021B	S-02
Nonhalogenated Organics by 8015										
Gasoline Range Organics (C6-C10)	397	5.00	mg/kg	1		1351031	12/18/13	12/19/13	EPA 8015D	
Diesel Range Organics (C10-C28)	690	30.0	mg/kg	1		1351030	12/18/13	12/19/13	EPA 8015D	
GRO and DRO Combined Fractions	1090	5.00	mg/kg			[CALC]	12/18/13	12/19/13	EPA 8015D	

Partial or incomplete reproduction of this report is prohibited, unless approved by Envirotech, Inc.

Enterprise Products 614 Reilly Ave Farmington NM, 87401	Project Name: Cohn #1 Project Number: 03022-0001 Project Manager: Kyle Summers-SW Geoscience	Reported: 20-Dec-13 10:55
---	--	------------------------------

S-2
P312087-02 (Solid)

Analyte	Result	Reporting Limit	Units	Dilution	Batch	Prepared	Analyzed	Method	Notes
Volatile Organics by EPA 8021									
Benzene	8.11	0.05	mg/kg	1	1351031	12/18/13	12/19/13	EPA 8021B	
Toluene	78.7	0.05	mg/kg	1	1351031	12/18/13	12/19/13	EPA 8021B	
Ethylbenzene	15.4	0.05	mg/kg	1	1351031	12/18/13	12/19/13	EPA 8021B	
p,m-Xylene	132	0.05	mg/kg	1	1351031	12/18/13	12/19/13	EPA 8021B	
o-Xylene	32.3	0.05	mg/kg	1	1351031	12/18/13	12/19/13	EPA 8021B	
Total Xylenes	165	0.05	mg/kg	1	1351031	12/18/13	12/19/13	EPA 8021B	
Total BTEX	267	0.05	mg/kg	1	1351031	12/18/13	12/19/13	EPA 8021B	
Surrogate: Bromochlorobenzene		267 %		80-120	1351031	12/18/13	12/19/13	EPA 8021B	S-02
Surrogate: 1,3-Dichlorobenzene		600 %		80-120	1351031	12/18/13	12/19/13	EPA 8021B	S-02
Nonhalogenated Organics by 8015									
Gasoline Range Organics (C6-C10)	806	4.99	mg/kg	1	1351031	12/18/13	12/19/13	EPA 8015D	
Diesel Range Organics (C10-C28)	3850	29.9	mg/kg	1	1351030	12/18/13	12/19/13	EPA 8015D	
GRO and DRO Combined Fractions	4660	4.99	mg/kg		[CALC]	12/18/13	12/19/13	EPA 8015D	

Partial or incomplete reproduction of this report is prohibited, unless approved by Envirotech, Inc.

Enterprise Products
 614 Reilly Ave
 Farmington NM, 87401

 Project Name: Cohn #1
 Project Number: 03022-0001
 Project Manager: Kyle Summers-SW Geoscience

 Reported:
 20-Dec-13 10:55

S-3
P312087-03 (Solid)

Analyte	Result	Reporting		Units	Dilution	Batch	Prepared	Analyzed	Method	Notes
		Limit								
Volatile Organics by EPA 8021										
Benzene	ND	0.50	mg/kg	10	1351031	12/19/13	12/19/13	12/19/13	EPA 8021B	
Toluene	24.1	0.50	mg/kg	10	1351031	12/19/13	12/19/13	12/19/13	EPA 8021B	
Ethylbenzene	1.69	0.50	mg/kg	10	1351031	12/19/13	12/19/13	12/19/13	EPA 8021B	
p,m-Xylene	52.1	0.50	mg/kg	10	1351031	12/19/13	12/19/13	12/19/13	EPA 8021B	
o-Xylene	7.97	0.50	mg/kg	10	1351031	12/19/13	12/19/13	12/19/13	EPA 8021B	
Total Xylenes	60.1	0.50	mg/kg	10	1351031	12/19/13	12/19/13	12/19/13	EPA 8021B	
Total BTEX	85.9	0.50	mg/kg	10	1351031	12/19/13	12/19/13	12/19/13	EPA 8021B	
Surrogate: 1,3-Dichlorobenzene		105 %		80-120	1351031	12/19/13	12/19/13	12/19/13	EPA 8021B	
Surrogate: Bromochlorobenzene		86.3 %		80-120	1351031	12/19/13	12/19/13	12/19/13	EPA 8021B	
Nonhalogenated Organics by 8015										
Gasoline Range Organics (C6-C10)	489	49.9	mg/kg	10	1351031	12/19/13	12/19/13	12/19/13	EPA 8015D	
Diesel Range Organics (C10-C28)	4190	29.9	mg/kg	1	1351030	12/19/13	12/19/13	12/19/13	EPA 8015D	
GRO and DRO Combined Fractions	4680	29.9	mg/kg		[CALC]	12/19/13	12/19/13	12/19/13	EPA 8015D	

Partial or incomplete reproduction of this report is prohibited, unless approved by Envirotech, Inc.



Enterprise Products	Project Name:	Cohn #1	Reported: 20-Dec-13 10:55
614 Reilly Ave	Project Number:	03022-0001	
Farmington NM, 87401	Project Manager:	Kyle Summers-SW Geoscience	

S-4

P312087-04 (Solid)

Analyte	Result	Reporting Limit	Units	Dilution	Batch	Prepared	Analyzed	Method	Notes
Volatile Organics by EPA 8021									
Benzene	ND	0.05	mg/kg	1	1351031	12/19/13	12/19/13	EPA 8021B	
Toluene	ND	0.05	mg/kg	1	1351031	12/19/13	12/19/13	EPA 8021B	
Ethylbenzene	ND	0.05	mg/kg	1	1351031	12/19/13	12/19/13	EPA 8021B	
p,m-Xylene	ND	0.05	mg/kg	1	1351031	12/19/13	12/19/13	EPA 8021B	
o-Xylene	ND	0.05	mg/kg	1	1351031	12/19/13	12/19/13	EPA 8021B	
Total Xylenes	ND	0.05	mg/kg	1	1351031	12/19/13	12/19/13	EPA 8021B	
Total BTEX	ND	0.05	mg/kg	1	1351031	12/19/13	12/19/13	EPA 8021B	
Surrogate: Bromochlorobenzene		110 %	80-120		1351031	12/19/13	12/19/13	EPA 8021B	
Surrogate: 1,3-Dichlorobenzene		108 %	80-120		1351031	12/19/13	12/19/13	EPA 8021B	
Nonhalogenated Organics by 8015									
Gasoline Range Organics (C6-C10)	6.23	4.98	mg/kg	1	1351031	12/19/13	12/19/13	EPA 8015D	
Diesel Range Organics (C10-C28)	285	30.0	mg/kg	1	1351030	12/19/13	12/19/13	EPA 8015D	
GRO and DRO Combined Fractions	291	4.98	mg/kg		[CALC]	12/19/13	12/19/13	EPA 8015D	

Partial or incomplete reproduction of this report is prohibited, unless approved by Envirotech, Inc.

5796 US Highway 64, Farmington, NM 87401

Ph (505) 632-0615 Fx (505) 632-1865

Three Springs - 65 Mercado Street, Suite 115, Durango, CO 81301

Ph (970) 259-0615 Fr (800) 362-1879

envirotech-inc.com

laboratory@envirotech-inc.com



Enterprise Products	Project Name:	Cohn #1	Reported: 20-Dec-13 10:55
614 Reilly Ave	Project Number:	03022-0001	
Farmington NM, 87401	Project Manager:	Kyle Summers-SW Geoscience	

S-5

P312087-05 (Solid)

Analyte	Result	Reporting		Dilution	Batch	Prepared	Analyzed	Method	Notes
		Limit	Units						
Volatile Organics by EPA 8021									
Benzene	ND	0.50	mg/kg	10	1351031	12/19/13	12/19/13	EPA 8021B	
Toluene	5.93	0.50	mg/kg	10	1351031	12/19/13	12/19/13	EPA 8021B	
Ethylbenzene	ND	0.50	mg/kg	10	1351031	12/19/13	12/19/13	EPA 8021B	
p,m-Xylene	17.7	0.50	mg/kg	10	1351031	12/19/13	12/19/13	EPA 8021B	
o-Xylene	1.01	0.50	mg/kg	10	1351031	12/19/13	12/19/13	EPA 8021B	
Total Xylenes	18.7	0.50	mg/kg	10	1351031	12/19/13	12/19/13	EPA 8021B	
Total BTEX	24.6	0.50	mg/kg	10	1351031	12/19/13	12/19/13	EPA 8021B	
Surrogate: Bromochlorobenzene		103 %		80-120	1351031	12/19/13	12/19/13	EPA 8021B	
Surrogate: 1,3-Dichlorobenzene		103 %		80-120	1351031	12/19/13	12/19/13	EPA 8021B	
Nonhalogenated Organics by 8015									
Gasoline Range Organics (C6-C10)	207	49.9	mg/kg	10	1351031	12/19/13	12/19/13	EPA 8015D	
Diesel Range Organics (C10-C28)	1550	29.9	mg/kg	1	1351030	12/19/13	12/19/13	EPA 8015D	
GRO and DRO Combined Fractions	1760	29.9	mg/kg		[CALC]	12/19/13	12/19/13	EPA 8015D	

Partial or incomplete reproduction of this report is prohibited, unless approved by Envirotech, Inc.

5796 US Highway 64, Farmington, NM 87401

Ph (505) 632-0615 Fx (505) 632-1865

Three Springs - 65 Mercado Street, Suite 115, Durango, CO 81301

Ph (970) 259-0615 Fr (800) 362-1879

envirotech-inc.com

laboratory@envirotech-inc.com

Enterprise Products	Project Name:	Cohn #1	Reported: 20-Dec-13 10:55
614 Reilly Ave	Project Number:	03022-0001	
Farmington NM, 87401	Project Manager:	Kyle Summers-SW Geoscience	

S-6
P312087-06 (Solid)

Analyte	Result	Reporting		Units	Dilution	Batch	Prepared	Analyzed	Method	Notes
		Limit								
Volatile Organics by EPA 8021										
Benzene	ND	0.05	mg/kg	1		1351031	12/19/13	12/19/13	EPA 8021B	
Toluene	3.18	0.05	mg/kg	1		1351031	12/19/13	12/19/13	EPA 8021B	
Ethylbenzene	0.60	0.05	mg/kg	1		1351031	12/19/13	12/19/13	EPA 8021B	
p,m-Xylene	8.80	0.05	mg/kg	1		1351031	12/19/13	12/19/13	EPA 8021B	
o-Xylene	1.57	0.05	mg/kg	1		1351031	12/19/13	12/19/13	EPA 8021B	
Total Xylenes	10.4	0.05	mg/kg	1		1351031	12/19/13	12/19/13	EPA 8021B	
Total BTEX	14.2	0.05	mg/kg	1		1351031	12/19/13	12/19/13	EPA 8021B	
Surrogate: 1,3-Dichlorobenzene		116 %		80-120		1351031	12/19/13	12/19/13	EPA 8021B	
Surrogate: Bromochlorobenzene		128 %		80-120		1351031	12/19/13	12/19/13	EPA 8021B	S-02
Nonhalogenated Organics by 8015										
Gasoline Range Organics (C6-C10)	75.6	4.99	mg/kg	1		1351031	12/19/13	12/19/13	EPA 8015D	
Diesel Range Organics (C10-C28)	696	30.0	mg/kg	1		1351030	12/19/13	12/19/13	EPA 8015D	
GRO and DRO Combined Fractions	771	4.99	mg/kg			[CALC]	12/19/13	12/19/13	EPA 8015D	

Partial or incomplete reproduction of this report is prohibited, unless approved by Envirotech, Inc.

Enterprise Products 614 Reilly Ave Farmington NM, 87401	Project Name: Cohn #1 Project Number: 03022-0001 Project Manager: Kyle Summers-SW Geoscience	Reported: 20-Dec-13 10:55
---	--	------------------------------

S-7

P312087-07 (Solid)

Analyte	Result	Reporting		Units	Dilution	Batch	Prepared	Analyzed	Method	Notes
		Limit								
Volatile Organics by EPA 8021										
Benzene	ND	0.05	mg/kg	1		1351031	12/19/13	12/19/13	EPA 8021B	
Toluene	ND	0.05	mg/kg	1		1351031	12/19/13	12/19/13	EPA 8021B	
Ethylbenzene	ND	0.05	mg/kg	1		1351031	12/19/13	12/19/13	EPA 8021B	
p,m-Xylene	ND	0.05	mg/kg	1		1351031	12/19/13	12/19/13	EPA 8021B	
o-Xylene	ND	0.05	mg/kg	1		1351031	12/19/13	12/19/13	EPA 8021B	
Total Xylenes	ND	0.05	mg/kg	1		1351031	12/19/13	12/19/13	EPA 8021B	
Total BTEX	ND	0.05	mg/kg	1		1351031	12/19/13	12/19/13	EPA 8021B	
Surrogate: Bromochlorobenzene		105 %	80-120			1351031	12/19/13	12/19/13	EPA 8021B	
Surrogate: 1,3-Dichlorobenzene		106 %	80-120			1351031	12/19/13	12/19/13	EPA 8021B	
Nonhalogenated Organics by 8015										
Gasoline Range Organics (C6-C10)	7.19	5.00	mg/kg	1		1351031	12/19/13	12/19/13	EPA 8015D	
Diesel Range Organics (C10-C28)	103	29.9	mg/kg	1		1351030	12/19/13	12/19/13	EPA 8015D	
GRO and DRO Combined Fractions	110	5.00	mg/kg			[CALC]	12/19/13	12/19/13	EPA 8015D	

Partial or incomplete reproduction of this report is prohibited, unless approved by Envirotech, Inc.



Enterprise Products	Project Name:	Cohn #1	Reported: 20-Dec-13 10:55
614 Reilly Ave	Project Number:	03022-0001	
Farmington NM, 87401	Project Manager:	Kyle Summers-SW Geoscience	

S-8

P312087-08 (Solid)

Analyte	Result	Reporting Limit	Units	Dilution	Batch	Prepared	Analyzed	Method	Notes
Volatile Organics by EPA 8021									
Benzene	ND	0.50	mg/kg	10	1351031	12/19/13	12/19/13	EPA 8021B	
Toluene	23.6	0.50	mg/kg	10	1351031	12/19/13	12/19/13	EPA 8021B	
Ethylbenzene	2.22	0.50	mg/kg	10	1351031	12/19/13	12/19/13	EPA 8021B	
p,m-Xylene	55.9	0.50	mg/kg	10	1351031	12/19/13	12/19/13	EPA 8021B	
o-Xylene	10.8	0.50	mg/kg	10	1351031	12/19/13	12/19/13	EPA 8021B	
Total Xylenes	66.6	0.50	mg/kg	10	1351031	12/19/13	12/19/13	EPA 8021B	
Total BTEX	92.5	0.50	mg/kg	10	1351031	12/19/13	12/19/13	EPA 8021B	
Surrogate: Bromochlorobenzene		112 %		80-120	1351031	12/19/13	12/19/13	EPA 8021B	
Surrogate: 1,3-Dichlorobenzene		113 %		80-120	1351031	12/19/13	12/19/13	EPA 8021B	
Nonhalogenated Organics by 8015									
Gasoline Range Organics (C6-C10)	548	49.8	mg/kg	10	1351031	12/19/13	12/19/13	EPA 8015D	
Diesel Range Organics (C10-C28)	2720	29.9	mg/kg	1	1351030	12/19/13	12/19/13	EPA 8015D	
GRO and DRO Combined Fractions	3270	29.9	mg/kg		[CALC]	12/19/13	12/19/13	EPA 8015D	

Partial or incomplete reproduction of this report is prohibited, unless approved by Envirotech, Inc.

5796 US Highway 64, Farmington, NM 87401

Ph (505) 632-0615 Fx (505) 632-1865

Three Springs - 65 Mercado Street, Suite 115, Durango, CO 81301

Ph (970) 259-0615 Fr (800) 362-1879

envirotech-inc.com
laboratory@envirotech-inc.com



Enterprise Products 614 Reilly Ave Farmington NM, 87401	Project Name: Cohn #1 Project Number: 03022-0001 Project Manager: Kyle Summers-SW Geoscience	Reported: 20-Dec-13 10:55
---	--	------------------------------

Volatile Organics by EPA 8021 - Quality Control

Envirotech Analytical Laboratory

Analyte	Result	Reporting Limit	Units	Spike Level	Source Result	%REC	%REC Limits	RPD	RPD Limit	Notes
---------	--------	-----------------	-------	-------------	---------------	------	-------------	-----	-----------	-------

Batch 1351031 - Purge and Trap EPA 5030A

Blank (1351031-BLK1)				Prepared: 18-Dec-13 Analyzed: 19-Dec-13						
Benzene	ND	0.05	mg/kg							
Toluene	ND	0.05	"							
Ethylbenzene	ND	0.05	"							
p,m-Xylene	ND	0.05	"							
o-Xylene	ND	0.05	"							
Total Xylenes	ND	0.05	"							
Total BTEX	ND	0.05	"							
Surrogate: 1,3-Dichlorobenzene	52.6		ug/L	50.0		105	80-120			
Surrogate: Bromochlorobenzene	53.5		"	50.0		107	80-120			

Duplicate (1351031-DUP1)				Source: P312087-01		Prepared: 18-Dec-13 Analyzed: 19-Dec-13				
Benzene	ND	0.50	mg/kg		2.73			30		D1
Toluene	17.4	0.50	"		31.3			57.0	30	D1
Ethylbenzene	0.67	0.50	"		6.33			162	30	D1
p,m-Xylene	40.6	0.50	"		59.6			38.0	30	D1
o-Xylene	6.19	0.50	"		14.0			77.2	30	D1
Surrogate: 1,3-Dichlorobenzene	58.2		ug/L	50.0		116	80-120			
Surrogate: Bromochlorobenzene	58.3		"	50.0		117	80-120			

Matrix Spike (1351031-MS1)				Source: P312087-01		Prepared: 18-Dec-13 Analyzed: 19-Dec-13				
Benzene	56.9		ug/L	50.0	5.48	103	39-150			
Toluene	110		"	50.0	62.7	93.6	46-148			
Ethylbenzene	63.8		"	50.0	12.7	102	32-160			
p,m-Xylene	230		"	100	119	111	46-148			
o-Xylene	76.7		"	50.0	28.0	97.4	46-148			
Surrogate: 1,3-Dichlorobenzene	57.2		"	50.0		114	80-120			
Surrogate: Bromochlorobenzene	58.9		"	50.0		118	80-120			

Partial or incomplete reproduction of this report is prohibited, unless approved by Envirotech, Inc.

5796 US Highway 64, Farmington, NM 87401

Three Springs - 65 Mercado Street, Suite 115, Durango, CO 81301

Ph (505) 632-0615 Fx (505) 632-1865

Ph (970) 259-0615 Fr (800) 362-1879

envirotech-inc.com
laboratory@envirotech-inc.com



Enterprise Products	Project Name:	Cohn #1	Reported: 20-Dec-13 10:55
614 Reilly Ave	Project Number:	03022-0001	
Farmington NM, 87401	Project Manager:	Kyle Summers-SW Geoscience	

Nonhalogenated Organics by 8015 - Quality Control

Envirotech Analytical Laboratory

Analyte	Result	Reporting Limit	Units	Spike Level	Source Result	%REC	%REC Limits	RPD	RPD Limit	Notes
Batch 1351030 - DRO Extraction EPA 3550C										
Blank (1351030-BLK1)				Prepared: 18-Dec-13 Analyzed: 19-Dec-13						
Diesel Range Organics (C10-C28)	ND	29.9	mg/kg							
Duplicate (1351030-DUP1)				Source: P312087-01 Prepared: 18-Dec-13 Analyzed: 19-Dec-13						
Diesel Range Organics (C10-C28)	671	30.0	mg/kg		690			2.78	30	
Matrix Spike (1351030-MS1)				Source: P312087-01 Prepared: 18-Dec-13 Analyzed: 19-Dec-13						
Diesel Range Organics (C10-C28)	940	31.6	mg/kg	263	690	95.1	75-125			

Partial or incomplete reproduction of this report is prohibited, unless approved by Envirotech, Inc.

5796 US Highway 64, Farmington, NM 87401

Three Springs - 65 Mercado Street, Suite 115, Durango, CO 81301

Ph (505) 632-0615 Fx (505) 632-1865

Ph (970) 259-0615 Fr (800) 362-1879

envirotech-inc.com

laboratory@envirotech-inc.com



Enterprise Products 614 Reilly Ave Farmington NM, 87401	Project Name: Cohn #1 Project Number: 03022-0001 Project Manager: Kyle Summers-SW Geoscience	Reported: 20-Dec-13 10:55
---	--	------------------------------

Nonhalogenated Organics by 8015 - Quality Control

Envirotech Analytical Laboratory

Analyte	Result	Reporting Limit	Units	Spike Level	Source Result	%REC	%REC Limits	RPD	RPD Limit	Notes
---------	--------	-----------------	-------	-------------	---------------	------	-------------	-----	-----------	-------

Batch 1351031 - Purge and Trap EPA 5030A

Blank (1351031-BLK1)

Prepared: 18-Dec-13 Analyzed: 19-Dec-13

Gasoline Range Organics (C6-C10)	ND	5.00	mg/kg							
----------------------------------	----	------	-------	--	--	--	--	--	--	--

Duplicate (1351031-DUP1)

Source: P312087-01

Prepared: 18-Dec-13 Analyzed: 19-Dec-13

Gasoline Range Organics (C6-C10)	0.84	0.10	mg/kg		397			199	30	D1
----------------------------------	------	------	-------	--	-----	--	--	-----	----	----

Matrix Spike (1351031-MS1)

Source: P312087-01

Prepared: 18-Dec-13 Analyzed: 19-Dec-13

Gasoline Range Organics (C6-C10)	1.36		mg/L	0.450	0.80	126	75-125			SPK1, Surr2
----------------------------------	------	--	------	-------	------	-----	--------	--	--	-------------

Partial or incomplete reproduction of this report is prohibited, unless approved by Envirotech, Inc.

5796 US Highway 64, Farmington, NM 87401

Ph (505) 632-0615 Fx (505) 632-1865

Three Springs - 65 Mercado Street, Suite 115, Durango, CO 81301

Ph (970) 259-0615 Fr (800) 362-1879

envirotech-inc.com
laboratory@envirotech-inc.com

Enterprise Products 614 Reilly Ave Farmington NM, 87401	Project Name: Cohn #1 Project Number: 03022-0001 Project Manager: Kyle Summers-SW Geoscience	Reported: 20-Dec-13 10:55
---	--	------------------------------

Notes and Definitions

Surr2	Surrogate recovery was below acceptable limits.
SPK 1	The spike recovery for this QC sample is outside of control limits.
S-02	The surrogate recovery for this sample cannot be accurately quantified due to interference from coeluting organic compounds present in the sample extract.
D1	Duplicates or Matrix Spike Duplicates Relative Percent Difference exceeds 30%.
DET	Analyte DETECTED
ND	Analyte NOT DETECTED at or above the reporting limit
NR	Not Reported
dry	Sample results reported on a dry weight basis
RPD	Relative Percent Difference

Partial or incomplete reproduction of this report is prohibited, unless approved by Envirotech, Inc.

CHAIN OF CUSTODY RECORD

16451

Page 15 of 15

Client: Enterprise / SWG			Project Name / Location: Cohn #1			ANALYSIS / PARAMETERS													
Email results to: kyle.summers@southwestgeoscience.com			Sampler Name: Kyle Summers			<div style="display: flex; justify-content: space-between;"> <div> TPH (Method 8015) GRD BTEX (Method 8021) GRD VOC (Method 8260) RCRA 8 Metals Cation / Anion RCI TCLP with H/P CO Table 910-1 TPH (418.1) CHLORIDE Sample Cool Sample Intact </div> </div>													
Client Phone No.: 903 821 5603			Client No.: 03022-0001 07174-0003																

Sample No./ Identification	Sample Date	Sample Time	Lab No.	No./Volume of Containers	Preservative			TPH	BTEX	VOC	RCRA 8 Metals	Cation / Anion	RCI	TCLP with H/P	CO Table 910-1	TPH (418.1)	CHLORIDE			Sample Cool	Sample Intact
					HNO ₃	HCl															
S-1	12/18/13	1030	P312087-01	1 X 4oz				X	X											X	X
S-2		1035	P312087-02																		
S-3		1040	P312087-03																		
S-4		1045	P312087-04																		
S-5		1050	P312087-05																		
S-6		1055	P312087-06																		
S-7		1100	P312087-07																		
S-8		1105	P312087-08																		
NFS																					

Relinquished by: (Signature)	Date	Time	Received by: (Signature)	Date	Time
	12/18/13	1536		12/18/13	1536
Relinquished by: (Signature)			Received by: (Signature)		
Sample Matrix					
Soil <input checked="" type="checkbox"/> Solid <input type="checkbox"/> Sludge <input type="checkbox"/> Aqueous <input type="checkbox"/> Other <input type="checkbox"/>			RUSH RB21200		
<input type="checkbox"/> Sample(s) dropped off after hours to secure drop off area. RUSH					

envirotech
Analytical Laboratory

5795 US Highway 64 • Farmington, NM 87401 • 505-632-0615 • Three Springs • 65 Mercado Street, Suite 115, Durango, CO 81301 • laboratory@envirotech-inc.com



Analytical Report

Report Summary

Client: Apex TITAN, Inc.

Chain Of Custody Number: 16915

Samples Received: 4/24/2014 2:55:00PM

Job Number: 07174-0003

Work Order: P404080

Project Name/Location: Cohn #1

Entire Report Reviewed By:

A handwritten signature in black ink, appearing to read 'Tim Cain', written over a horizontal line.

Date: 4/28/14

Tim Cain, Laboratory Manager

The results in this report apply to the samples submitted to Envirotech's Analytical Laboratory and were analyzed in accordance with the chain of custody document supplied by you, the client, and as such are for your exclusive use only. The results in this report are based on the sample as received unless otherwise noted. Partial or incomplete reproduction of this report is prohibited, unless approved by Envirotech, Inc. If you have any questions regarding this analytical report, please don't hesitate to contact Envirotech's Laboratory Staff.

Apex TITAN, Inc.
 606 S. Rio Grand, Suite A
 Aztec NM, 87410

Project Name: Cohn #1
 Project Number: 07174-0003
 Project Manager: Kyle Summers

Reported:
 28-Apr-14 13:47

Analytical Report for Samples

Client Sample ID	Lab Sample ID	Matrix	Sampled	Received	Container
S-9	P404080-01A	Solid	04/24/14	04/24/14	Glass Jar, 4 oz.
S-10	P404080-02A	Solid	04/24/14	04/24/14	Glass Jar, 4 oz.
S-11	P404080-03A	Solid	04/24/14	04/24/14	Glass Jar, 4 oz.
S-12	P404080-04A	Solid	04/24/14	04/24/14	Glass Jar, 4 oz.
S-13	P404080-05A	Solid	04/24/14	04/24/14	Glass Jar, 4 oz.
S-14	P404080-06A	Solid	04/24/14	04/24/14	Glass Jar, 4 oz.
S-15	P404080-07A	Solid	04/24/14	04/24/14	Glass Jar, 4 oz.
S-16	P404080-08A	Solid	04/24/14	04/24/14	Glass Jar, 4 oz.
S-17	P404080-09A	Solid	04/24/14	04/24/14	Glass Jar, 4 oz.

Partial or incomplete reproduction of this report is prohibited, unless approved by Envirotech, Inc.



Apex TITAN, Inc. 606 S. Rio Grand, Suite A Aztec NM, 87410	Project Name: Cohn #1 Project Number: 07174-0003 Project Manager: Kyle Summers	Reported: 28-Apr-14 13:47
--	--	------------------------------

S-9

P404080-01 (Solid)

Analyte	Result	Reporting		Dilution	Batch	Prepared	Analyzed	Method	Notes
		Limit	Units						
Volatile Organics by EPA 8021									
Benzene	ND	0.05	mg/kg	1	1417022	04/24/14	04/25/14	EPA 8021B	
Toluene	ND	0.05	mg/kg	1	1417022	04/24/14	04/25/14	EPA 8021B	
Ethylbenzene	ND	0.05	mg/kg	1	1417022	04/24/14	04/25/14	EPA 8021B	
p,m-Xylene	ND	0.05	mg/kg	1	1417022	04/24/14	04/25/14	EPA 8021B	
o-Xylene	ND	0.05	mg/kg	1	1417022	04/24/14	04/25/14	EPA 8021B	
Total Xylenes	ND	0.05	mg/kg	1	1417022	04/24/14	04/25/14	EPA 8021B	
Total BTEX	ND	0.05	mg/kg	1	1417022	04/24/14	04/25/14	EPA 8021B	
Surrogate: Bromochlorobenzene		107 %		80-120	1417022	04/24/14	04/25/14	EPA 8021B	
Surrogate: 1,3-Dichlorobenzene		97.2 %		80-120	1417022	04/24/14	04/25/14	EPA 8021B	
Nonhalogenated Organics by 8015									
Gasoline Range Organics (C6-C10)	ND	5.00	mg/kg	1	1417022	04/24/14	04/25/14	EPA 8015D	
Diesel Range Organics (C10-C28)	ND	30.0	mg/kg	1	1417023	04/24/14	04/25/14	EPA 8015D	

Partial or incomplete reproduction of this report is prohibited, unless approved by Envirotech, Inc.

5796 US Highway 64, Farmington, NM 87401

Ph (505) 632-0615 Fx (505) 632-1865

Three Springs - 65 Mercado Street, Suite 115, Durango, CO 81301

Ph (970) 259-0615 Fr (800) 362-1879

envirotech-inc.com
laboratory@envirotech-inc.com

Apex TITAN, Inc.
 606 S. Rio Grand, Suite A
 Aztec NM, 87410

Project Name: Cohn #1
 Project Number: 07174-0003
 Project Manager: Kyle Summers

Reported:
 28-Apr-14 13:47

S-10
P404080-02 (Solid)

Analyte	Result	Reporting		Dilution	Batch	Prepared	Analyzed	Method	Notes
		Limit	Units						
Volatile Organics by EPA 8021									
Benzene	ND	0.05	mg/kg	1	1417022	04/24/14	04/25/14	EPA 8021B	
Toluene	ND	0.05	mg/kg	1	1417022	04/24/14	04/25/14	EPA 8021B	
Ethylbenzene	ND	0.05	mg/kg	1	1417022	04/24/14	04/25/14	EPA 8021B	
p,m-Xylene	ND	0.05	mg/kg	1	1417022	04/24/14	04/25/14	EPA 8021B	
o-Xylene	ND	0.05	mg/kg	1	1417022	04/24/14	04/25/14	EPA 8021B	
Total Xylenes	ND	0.05	mg/kg	1	1417022	04/24/14	04/25/14	EPA 8021B	
Total BTEX	ND	0.05	mg/kg	1	1417022	04/24/14	04/25/14	EPA 8021B	
Surrogate: 1,3-Dichlorobenzene		97.1 %		80-120	1417022	04/24/14	04/25/14	EPA 8021B	
Surrogate: Bromochlorobenzene		109 %		80-120	1417022	04/24/14	04/25/14	EPA 8021B	
Nonhalogenated Organics by 8015									
Gasoline Range Organics (C6-C10)	ND	5.00	mg/kg	1	1417022	04/24/14	04/25/14	EPA 8015D	
Diesel Range Organics (C10-C28)	ND	29.9	mg/kg	1	1417023	04/24/14	04/25/14	EPA 8015D	

Partial or incomplete reproduction of this report is prohibited, unless approved by Envirotech, Inc.



Apex TITAN, Inc. 606 S. Rio Grand, Suite A Aztec NM, 87410	Project Name: Cohn #1 Project Number: 07174-0003 Project Manager: Kyle Summers	Reported: 28-Apr-14 13:47
--	--	------------------------------

S-11
P404080-03 (Solid)

Analyte	Result	Reporting Limit	Units	Dilution	Batch	Prepared	Analyzed	Method	Notes
Volatile Organics by EPA 8021									
Benzene	ND	0.05	mg/kg	1	1417022	04/24/14	04/25/14	EPA 8021B	
Toluene	ND	0.05	mg/kg	1	1417022	04/24/14	04/25/14	EPA 8021B	
Ethylbenzene	ND	0.05	mg/kg	1	1417022	04/24/14	04/25/14	EPA 8021B	
p,m-Xylene	ND	0.05	mg/kg	1	1417022	04/24/14	04/25/14	EPA 8021B	
o-Xylene	ND	0.05	mg/kg	1	1417022	04/24/14	04/25/14	EPA 8021B	
Total Xylenes	ND	0.05	mg/kg	1	1417022	04/24/14	04/25/14	EPA 8021B	
Total BTEX	ND	0.05	mg/kg	1	1417022	04/24/14	04/25/14	EPA 8021B	
Surrogate: 1,3-Dichlorobenzene		93.1 %		80-120	1417022	04/24/14	04/25/14	EPA 8021B	
Surrogate: Bromochlorobenzene		105 %		80-120	1417022	04/24/14	04/25/14	EPA 8021B	
Nonhalogenated Organics by 8015									
Gasoline Range Organics (C6-C10)	ND	4.98	mg/kg	1	1417022	04/24/14	04/25/14	EPA 8015D	
Diesel Range Organics (C10-C28)	ND	30.0	mg/kg	1	1417023	04/24/14	04/25/14	EPA 8015D	

Partial or incomplete reproduction of this report is prohibited, unless approved by Envirotech, Inc.

5796 US Highway 64, Farmington, NM 87401

Ph (505) 632-0615 Fx (505) 632-1865

Three Springs • 65 Mercado Street, Suite 115, Durango, CO 81301

Ph (970) 259-0615 Fr (800) 362-1879

envirotech-inc.com
laboratory@envirotech-inc.com

Apex TITAN, Inc.
 606 S. Rio Grand, Suite A
 Aztec NM, 87410

Project Name: Cohn #1
 Project Number: 07174-0003
 Project Manager: Kyle Summers

Reported:
 28-Apr-14 13:47

S-12

P404080-04 (Solid)

Analyte	Result	Reporting		Units	Dilution	Batch	Prepared	Analyzed	Method	Notes
		Limit								
Volatile Organics by EPA 8021										
Benzene	ND	0.05	mg/kg	1		1417022	04/24/14	04/25/14	EPA 8021B	
Toluene	ND	0.05	mg/kg	1		1417022	04/24/14	04/25/14	EPA 8021B	
Ethylbenzene	ND	0.05	mg/kg	1		1417022	04/24/14	04/25/14	EPA 8021B	
p,m-Xylene	ND	0.05	mg/kg	1		1417022	04/24/14	04/25/14	EPA 8021B	
o-Xylene	ND	0.05	mg/kg	1		1417022	04/24/14	04/25/14	EPA 8021B	
Total Xylenes	ND	0.05	mg/kg	1		1417022	04/24/14	04/25/14	EPA 8021B	
Total BTEX	ND	0.05	mg/kg	1		1417022	04/24/14	04/25/14	EPA 8021B	
Surrogate: 1,3-Dichlorobenzene		93.2 %		80-120		1417022	04/24/14	04/25/14	EPA 8021B	
Surrogate: Bromochlorobenzene		107 %		80-120		1417022	04/24/14	04/25/14	EPA 8021B	
Nonhalogenated Organics by 8015										
Gasoline Range Organics (C6-C10)	ND	5.00	mg/kg	1		1417022	04/24/14	04/25/14	EPA 8015D	
Diesel Range Organics (C10-C28)	ND	30.0	mg/kg	1		1417023	04/24/14	04/25/14	EPA 8015D	

Partial or incomplete reproduction of this report is prohibited, unless approved by Envirotech, Inc.

5796 US Highway 64, Farmington, NM 87401

Three Springs • 65 Mercado Street, Suite 115, Durango, CO 81301

Ph (505) 632-0615 Fx (505) 632-1865

Ph (970) 259-0615 Fr (800) 362-1879

envirotech-inc.com
 laboratory@envirotech-inc.com



Apex TITAN, Inc. 606 S. Rio Grand, Suite A Aztec NM, 87410	Project Name: Cohn #1 Project Number: 07174-0003 Project Manager: Kyle Summers	Reported: 28-Apr-14 13:47
--	--	------------------------------

S-13

P404080-05 (Solid)

Analyte	Result	Reporting		Dilution	Batch	Prepared	Analyzed	Method	Notes
		Limit	Units						
Volatile Organics by EPA 8021									
Benzene	ND	0.05	mg/kg	1	1417022	04/24/14	04/25/14	EPA 8021B	
Toluene	ND	0.05	mg/kg	1	1417022	04/24/14	04/25/14	EPA 8021B	
Ethylbenzene	ND	0.05	mg/kg	1	1417022	04/24/14	04/25/14	EPA 8021B	
p,m-Xylene	ND	0.05	mg/kg	1	1417022	04/24/14	04/25/14	EPA 8021B	
o-Xylene	ND	0.05	mg/kg	1	1417022	04/24/14	04/25/14	EPA 8021B	
Total Xylenes	ND	0.05	mg/kg	1	1417022	04/24/14	04/25/14	EPA 8021B	
Total BTEX	ND	0.05	mg/kg	1	1417022	04/24/14	04/25/14	EPA 8021B	
Surrogate: Bromochlorobenzene		108 %		80-120	1417022	04/24/14	04/25/14	EPA 8021B	
Surrogate: 1,3-Dichlorobenzene		94.7 %		80-120	1417022	04/24/14	04/25/14	EPA 8021B	
Nonhalogenated Organics by 8015									
Gasoline Range Organics (C6-C10)	ND	5.00	mg/kg	1	1417022	04/24/14	04/25/14	EPA 8015D	
Diesel Range Organics (C10-C28)	ND	29.9	mg/kg	1	1417023	04/24/14	04/25/14	EPA 8015D	

Partial or incomplete reproduction of this report is prohibited, unless approved by Envirotech, Inc.

5796 US Highway 64, Farmington, NM 87401

Ph (505) 632-0615 Fx (505) 632-1865

Three Springs - 65 Mercado Street, Suite 115, Durango, CO 81301

Ph (970) 259-0615 Fr (800) 362-1879

envirotech-inc.com
laboratory@envirotech-inc.com



Apex TITAN, Inc. 606 S. Rio Grand, Suite A Aztec NM, 87410	Project Name: Cohn #1 Project Number: 07174-0003 Project Manager: Kyle Summers	Reported: 28-Apr-14 13:47
--	--	------------------------------

S-14

P404080-06 (Solid)

Analyte	Result	Reporting Limit	Units	Dilution	Batch	Prepared	Analyzed	Method	Notes
Volatile Organics by EPA 8021									
Benzene	ND	0.05	mg/kg	1	1417022	04/24/14	04/25/14	EPA 8021B	
Toluene	ND	0.05	mg/kg	1	1417022	04/24/14	04/25/14	EPA 8021B	
Ethylbenzene	ND	0.05	mg/kg	1	1417022	04/24/14	04/25/14	EPA 8021B	
p,m-Xylene	ND	0.05	mg/kg	1	1417022	04/24/14	04/25/14	EPA 8021B	
o-Xylene	ND	0.05	mg/kg	1	1417022	04/24/14	04/25/14	EPA 8021B	
Total Xylenes	ND	0.05	mg/kg	1	1417022	04/24/14	04/25/14	EPA 8021B	
Total BTEX	ND	0.05	mg/kg	1	1417022	04/24/14	04/25/14	EPA 8021B	
Surrogate: 1,3-Dichlorobenzene		92.0 %			1417022	04/24/14	04/25/14	EPA 8021B	
Surrogate: Bromochlorobenzene		107 %			1417022	04/24/14	04/25/14	EPA 8021B	
Nonhalogenated Organics by 8015									
Gasoline Range Organics (C6-C10)	ND	4.99	mg/kg	1	1417022	04/24/14	04/25/14	EPA 8015D	
Diesel Range Organics (C10-C28)	ND	30.0	mg/kg	1	1417023	04/24/14	04/25/14	EPA 8015D	

Partial or incomplete reproduction of this report is prohibited, unless approved by Envirotech, Inc.

5796 US Highway 64, Farmington, NM 87401

Three Springs - 65 Mercado Street, Suite 115, Durango, CO 81301

Ph (505) 632-0615 Fx (505) 632-1865

Ph (970) 259-0615 Fr (800) 362-1879

envirotech-inc.com

laboratory@envirotech-inc.com

Apex TITAN, Inc.
 606 S. Rio Grand, Suite A
 Aztec NM, 87410

 Project Name: Cohn #1
 Project Number: 07174-0003
 Project Manager: Kyle Summers

Reported:
 28-Apr-14 13:47

S-15
P404080-07 (Solid)

Analyte	Result	Reporting		Units	Dilution	Batch	Prepared	Analyzed	Method	Notes
		Limit								
Volatile Organics by EPA 8021										
Benzene	ND	0.05	mg/kg	1		1417022	04/24/14	04/25/14	EPA 8021B	
Toluene	ND	0.05	mg/kg	1		1417022	04/24/14	04/25/14	EPA 8021B	
Ethylbenzene	ND	0.05	mg/kg	1		1417022	04/24/14	04/25/14	EPA 8021B	
p,m-Xylene	ND	0.05	mg/kg	1		1417022	04/24/14	04/25/14	EPA 8021B	
o-Xylene	ND	0.05	mg/kg	1		1417022	04/24/14	04/25/14	EPA 8021B	
Total Xylenes	ND	0.05	mg/kg	1		1417022	04/24/14	04/25/14	EPA 8021B	
Total BTEX	ND	0.05	mg/kg	1		1417022	04/24/14	04/25/14	EPA 8021B	
Surrogate: Bromochlorobenzene		101 %		80-120		1417022	04/24/14	04/25/14	EPA 8021B	
Surrogate: 1,3-Dichlorobenzene		91.3 %		80-120		1417022	04/24/14	04/25/14	EPA 8021B	
Nonhalogenated Organics by 8015										
Gasoline Range Organics (C6-C10)	ND	4.99	mg/kg	1		1417022	04/24/14	04/25/14	EPA 8015D	
Diesel Range Organics (C10-C28)	ND	30.0	mg/kg	1		1417023	04/24/14	04/25/14	EPA 8015D	

Partial or incomplete reproduction of this report is prohibited, unless approved by Envirotech, Inc.



Apex TITAN, Inc. 606 S. Rio Grand, Suite A Aztec NM, 87410	Project Name: Cohn #1 Project Number: 07174-0003 Project Manager: Kyle Summers	Reported: 28-Apr-14 13:47
--	--	------------------------------

S-16

P404080-08 (Solid)

Analyte	Result	Reporting		Dilution	Batch	Prepared	Analyzed	Method	Notes
		Limit	Units						
Volatile Organics by EPA 8021									
Benzene	ND	0.05	mg/kg	1	1417022	04/24/14	04/25/14	EPA 8021B	
Toluene	ND	0.05	mg/kg	1	1417022	04/24/14	04/25/14	EPA 8021B	
Ethylbenzene	ND	0.05	mg/kg	1	1417022	04/24/14	04/25/14	EPA 8021B	
p,m-Xylene	ND	0.05	mg/kg	1	1417022	04/24/14	04/25/14	EPA 8021B	
o-Xylene	ND	0.05	mg/kg	1	1417022	04/24/14	04/25/14	EPA 8021B	
Total Xylenes	ND	0.05	mg/kg	1	1417022	04/24/14	04/25/14	EPA 8021B	
Total BTEX	ND	0.05	mg/kg	1	1417022	04/24/14	04/25/14	EPA 8021B	
Surrogate: 1,3-Dichlorobenzene		93.4 %		80-120	1417022	04/24/14	04/25/14	EPA 8021B	
Surrogate: Bromochlorobenzene		102 %		80-120	1417022	04/24/14	04/25/14	EPA 8021B	
Nonhalogenated Organics by 8015									
Gasoline Range Organics (C6-C10)	ND	4.99	mg/kg	1	1417022	04/24/14	04/25/14	EPA 8015D	
Diesel Range Organics (C10-C28)	ND	29.9	mg/kg	1	1417023	04/24/14	04/25/14	EPA 8015D	

Partial or incomplete reproduction of this report is prohibited, unless approved by Envirotech, Inc.

5796 US Highway 64, Farmington, NM 87401

Three Springs • 65 Mercado Street, Suite 115, Durango, CO 81301

Ph (505) 632-0615 Fx (505) 632-1865

Ph (970) 259-0615 Fr (800) 362-1879

envirotech-inc.com
laboratory@envirotech-inc.com



Apex TITAN, Inc. 606 S. Rio Grand, Suite A Aztec NM, 87410	Project Name: Cohn #1 Project Number: 07174-0003 Project Manager: Kyle Summers	Reported: 28-Apr-14 13:47
--	--	------------------------------

S-17

P404080-09 (Solid)

Analyte	Result	Reporting		Units	Dilution	Batch	Prepared	Analyzed	Method	Notes
		Limit								
Volatile Organics by EPA 8021										
Benzene	ND	0.05	mg/kg	1		1417022	04/24/14	04/25/14	EPA 8021B	
Toluene	ND	0.05	mg/kg	1		1417022	04/24/14	04/25/14	EPA 8021B	
Ethylbenzene	ND	0.05	mg/kg	1		1417022	04/24/14	04/25/14	EPA 8021B	
p,m-Xylene	ND	0.05	mg/kg	1		1417022	04/24/14	04/25/14	EPA 8021B	
o-Xylene	ND	0.05	mg/kg	1		1417022	04/24/14	04/25/14	EPA 8021B	
Total Xylenes	ND	0.05	mg/kg	1		1417022	04/24/14	04/25/14	EPA 8021B	
Total BTEX	ND	0.05	mg/kg	1		1417022	04/24/14	04/25/14	EPA 8021B	
Surrogate: Bromochlorobenzene		105 %		80-120		1417022	04/24/14	04/25/14	EPA 8021B	
Surrogate: 1,3-Dichlorobenzene		91.5 %		80-120		1417022	04/24/14	04/25/14	EPA 8021B	
Nonhalogenated Organics by 8015										
Gasoline Range Organics (C6-C10)	ND	5.00	mg/kg	1		1417022	04/24/14	04/25/14	EPA 8015D	
Diesel Range Organics (C10-C28)	ND	30.0	mg/kg	1		1417023	04/24/14	04/25/14	EPA 8015D	

Partial or incomplete reproduction of this report is prohibited, unless approved by Envirotech, Inc.

5796 US Highway 64, Farmington, NM 87401

Ph (505) 632-0615 Fx (505) 632-1865

Three Springs - 65 Mercado Street, Suite 115, Durango, CO 81301

Ph (970) 259-0615 Fr (800) 362-1879

envirotech-inc.com
laboratory@envirotech-inc.com



Apex TITAN, Inc. 606 S. Rio Grand, Suite A Aztec NM, 87410	Project Name: Cohn #1 Project Number: 07174-0003 Project Manager: Kyle Summers	Reported: 28-Apr-14 13:47
--	--	------------------------------

Volatile Organics by EPA 8021 - Quality Control
Envirotech Analytical Laboratory

Analyte	Result	Reporting Limit	Units	Spike Level	Source Result	%REC	%REC Limits	RPD	RPD Limit	Notes
---------	--------	-----------------	-------	-------------	---------------	------	-------------	-----	-----------	-------

Batch 1417022 - Purge and Trap EPA 5030A

Blank (1417022-BLK1)				Prepared: 24-Apr-14 Analyzed: 25-Apr-14						
Benzene	ND	0.05	mg/kg							
Toluene	ND	0.05	"							
Ethylbenzene	ND	0.05	"							
p,m-Xylene	ND	0.05	"							
o-Xylene	ND	0.05	"							
Total Xylenes	ND	0.05	"							
Total BTEX	ND	0.05	"							
Surrogate: 1,3-Dichlorobenzene	50.4		ug/L	50.0		101	80-120			
Surrogate: Bromochlorobenzene	53.7		"	50.0		107	80-120			

Duplicate (1417022-DUP1)				Source: P404073-01		Prepared: 24-Apr-14 Analyzed: 25-Apr-14				
Benzene	ND	0.05	mg/kg		ND				30	
Toluene	ND	0.05	"		ND				30	
Ethylbenzene	ND	0.05	"		ND				30	
p,m-Xylene	ND	0.05	"		ND				30	
o-Xylene	ND	0.05	"		ND				30	
Surrogate: 1,3-Dichlorobenzene	43.1		ug/L	50.0		86.3	80-120			
Surrogate: Bromochlorobenzene	47.9		"	50.0		95.7	80-120			

Matrix Spike (1417022-MS1)				Source: P404073-01		Prepared: 24-Apr-14 Analyzed: 25-Apr-14				
Benzene	50.3		ug/L	50.0	ND	101	39-150			
Toluene	50.2		"	50.0	ND	100	46-148			
Ethylbenzene	50.4		"	50.0	ND	101	32-160			
p,m-Xylene	102		"	100	ND	102	46-148			
o-Xylene	51.3		"	50.0	ND	103	46-148			
Surrogate: 1,3-Dichlorobenzene	46.4		"	50.0		92.8	80-120			
Surrogate: Bromochlorobenzene	51.3		"	50.0		103	80-120			

Partial or incomplete reproduction of this report is prohibited, unless approved by Envirotech, Inc.

5796 US Highway 64, Farmington, NM 87401

Three Springs - 65 Mercado Street, Suite 115, Durango, CO 81301

Ph (505) 632-0615 Fx (505) 632-1865

Ph (970) 259-0615 Fr (800) 362-1879

envirotech-inc.com
laboratory@envirotech-inc.com



Apex TITAN, Inc. 606 S. Rio Grand, Suite A Aztec NM, 87410	Project Name: Cohn #1 Project Number: 07174-0003 Project Manager: Kyle Summers	Reported: 28-Apr-14 13:47
--	--	------------------------------

Nonhalogenated Organics by 8015 - Quality Control

Envirotech Analytical Laboratory

Analyte	Result	Reporting Limit	Units	Spike Level	Source Result	%REC	%REC Limits	RPD	RPD Limit	Notes
---------	--------	-----------------	-------	-------------	---------------	------	-------------	-----	-----------	-------

Batch 1417022 - Purge and Trap EPA 5030A

Blank (1417022-BLK1)				Prepared: 24-Apr-14 Analyzed: 25-Apr-14						
Gasoline Range Organics (C6-C10)	ND	4.99	mg/kg							
Duplicate (1417022-DUP1)				Source: P404073-01 Prepared: 24-Apr-14 Analyzed: 25-Apr-14						
Gasoline Range Organics (C6-C10)	ND	4.99	mg/kg		ND				30	
Matrix Spike (1417022-MS1)				Source: P404073-01 Prepared: 24-Apr-14 Analyzed: 25-Apr-14						
Gasoline Range Organics (C6-C10)	0.48		mg/L	0.450	ND	106	75-125			

Partial or incomplete reproduction of this report is prohibited, unless approved by Envirotech, Inc.

5796 US Highway 64, Farmington, NM 87401

Three Springs - 65 Mercado Street, Suite 115, Durango, CO 81301

Ph (505) 632-0615 Fx (505) 632-1865

Ph (970) 259-0615 Fr (800) 362-1879

envirotech-inc.com

laboratory@envirotech-inc.com



Apex TITAN, Inc. 606 S. Rio Grand, Suite A Aztec NM, 87410	Project Name: Cohn #1 Project Number: 07174-0003 Project Manager: Kyle Summers	Reported: 28-Apr-14 13:47
--	--	------------------------------

Nonhalogenated Organics by 8015 - Quality Control

Envirotech Analytical Laboratory

Analyte	Result	Reporting Limit	Units	Spike Level	Source Result	%REC	%REC Limits	RPD	RPD Limit	Notes
---------	--------	-----------------	-------	-------------	---------------	------	-------------	-----	-----------	-------

Batch 1417023 - DRO Extraction EPA 3550C

Blank (1417023-BLK1)

Prepared: 24-Apr-14 Analyzed: 25-Apr-14

Diesel Range Organics (C10-C28)	ND	30.0	mg/kg							
---------------------------------	----	------	-------	--	--	--	--	--	--	--

Duplicate (1417023-DUP1)

Source: P404073-01

Prepared: 24-Apr-14 Analyzed: 25-Apr-14

Diesel Range Organics (C10-C28)	ND	29.9	mg/kg		ND				30	
---------------------------------	----	------	-------	--	----	--	--	--	----	--

Matrix Spike (1417023-MS1)

Source: P404073-01

Prepared: 24-Apr-14 Analyzed: 25-Apr-14

Diesel Range Organics (C10-C28)	212		mg/L	250	6.21	82.5	75-125			
---------------------------------	-----	--	------	-----	------	------	--------	--	--	--

Partial or incomplete reproduction of this report is prohibited, unless approved by Envirotech, Inc.

5796 US Highway 64, Farmington, NM 87401

Ph (505) 632-0615 Fx (505) 632-1865

Three Springs - 65 Mercado Street, Suite 115, Durango, CO 81301

Ph (970) 259-0615 Fr (800) 362-1879

envirotech-inc.com

laboratory@envirotech-inc.com



Apex TITAN, Inc.
606 S. Rio Grand, Suite A
Aztec NM, 87410

Project Name: Cohn #1
Project Number: 07174-0003
Project Manager: Kyle Summers

Reported:
28-Apr-14 13:47

Notes and Definitions

DET Analyte DETECTED
ND Analyte NOT DETECTED at or above the reporting limit
NR Not Reported
dry Sample results reported on a dry weight basis
RPD Relative Percent Difference

Partial or incomplete reproduction of this report is prohibited, unless approved by Envirotech, Inc.

5796 US Highway 64, Farmington, NM 87401

Three Springs - 65 Mercado Street, Suite 115, Durango, CO 81301

Ph (505) 632-0615 Fx (505) 632-1865

Ph (970) 259-0615 Fr (800) 362-1879

envirotech-inc.com
laboratory@envirotech-inc.com

CHAIN OF CUSTODY RECORD

16915

Client: SWG/APEX		Project Name / Location: Lohn #1		ANALYSIS / PARAMETERS															
Email results to: Rsummers@Apexcos.com		Sampler Name: Ryle Summers		<div style="display: flex; justify-content: space-between; font-size: small;"> <div> DRD CRD </div> <div> TPH (Method 8015) BTEX (Method 8021) VOC (Method 8260) RCRA 8 Metals Cation / Anion RCI TCLP with H/P CO Table 910-1 TPH (418.1) CHLORIDE </div> <div> Sample Cool Sample Intact </div> </div>															
Client Phone No.: 903 821 5603		Client No.: 07174-0003																	

Sample No./ Identification	Sample Date	Sample Time	Lab No.	No./Volume of Containers	Preservative			TPH (Method 8015)	BTEX (Method 8021)	VOC (Method 8260)	RCRA 8 Metals	Cation / Anion	RCI	TCLP with H/P	CO Table 910-1	TPH (418.1)	CHLORIDE			Sample Cool	Sample Intact	
					HNO ₃	HCl																
S-9	4/24/12	1200	P404080-01	18402				X	X												✓	✓
S-10		1205	-02																		✓	✓
S-11		1210	-03																		✓	✓
S-12		1215	-04																		✓	✓
S-13		1330	-05																		✓	✓
S-14		1345	-06																		✓	✓
S-15		1400	-07																		✓	✓
S-16		1405	-08																		✓	✓
S-17		1410	-09																		✓	✓
<div style="display: flex; justify-content: space-between;"> <div>Relinquished by: (Signature) </div> <div>Date 4/24/14 Time 1455</div> <div>Received by: (Signature) </div> <div>Date 4/24/14 Time 1455</div> </div>																						
<div style="display: flex; justify-content: space-between;"> <div>Relinquished by: (Signature)</div> <div></div> <div>Received by: (Signature)</div> <div></div> </div>																						
<div style="display: flex; justify-content: space-between;"> <div>Sample Matrix</div> <div></div> <div></div> <div></div> </div>																						
<div style="display: flex; justify-content: space-between;"> <div>Soil <input checked="" type="checkbox"/> Solid <input type="checkbox"/> Sludge <input type="checkbox"/> Aqueous <input type="checkbox"/> Other <input type="checkbox"/></div> <div></div> <div></div> <div></div> </div>																						
<div style="display: flex; justify-content: space-between;"> <div><input type="checkbox"/> Sample(s) dropped off after hours to secure drop off area.</div> <div></div> <div></div> <div></div> </div>																						

envirotech
 Analytical Laboratory

8.9 5.3 6.94



Analytical Report

Report Summary

Client: Apex TITAN, Inc.

Chain Of Custody Number: 16914

Samples Received: 4/28/2014 4:36:00PM

Job Number: 07174-0003

Work Order: P404111

Project Name/Location: Cohn #1

Entire Report Reviewed By:

A handwritten signature in black ink, appearing to read 'Tim Cain', is written over a horizontal line.

Tim Cain, Laboratory Manager

Date: 4/30/14

The results in this report apply to the samples submitted to Envirotech's Analytical Laboratory and were analyzed in accordance with the chain of custody document supplied by you, the client, and as such are for your exclusive use only. The results in this report are based on the sample as received unless otherwise noted. Partial or incomplete reproduction of this report is prohibited, unless approved by Envirotech, Inc. If you have any questions regarding this analytical report, please don't hesitate to contact Envirotech's Laboratory Staff.



Apex TITAN, Inc.
606 S. Rio Grand, Suite A
Aztec NM, 87410

Project Name: Cohn #1
Project Number: 07174-0003
Project Manager: Kyle Summers

Reported:
30-Apr-14 12:58

Analytical Report for Samples

Client Sample ID	Lab Sample ID	Matrix	Sampled	Received	Container
S-18	P404111-01A	Soil	04/28/14	04/28/14	Glass Jar, 4 oz.
S-19	P404111-02A	Soil	04/28/14	04/28/14	Glass Jar, 4 oz.
S-20	P404111-03A	Soil	04/28/14	04/28/14	Glass Jar, 4 oz.
S-21	P404111-04A	Soil	04/28/14	04/28/14	Glass Jar, 4 oz.

Partial or incomplete reproduction of this report is prohibited, unless approved by Envirotech, Inc.

5796 US Highway 64, Farmington, NM 87401

Three Springs - 65 Mercado Street, Suite 115, Durango, CO 81301

Ph (505) 632-0615 Fx (505) 632-1865

Ph (970) 259-0615 Fr (800) 362-1879

envirotech-inc.com
laboratory@envirotech-inc.com



Apex TITAN, Inc. 606 S. Rio Grand, Suite A Aztec NM, 87410	Project Name: Cohn #1 Project Number: 07174-0003 Project Manager: Kyle Summers	Reported: 30-Apr-14 12:58
--	--	------------------------------

S-18

P404111-01 (Solid)

Analyte	Result	Reporting		Dilution	Batch	Prepared	Analyzed	Method	Notes
		Limit	Units						
Volatile Organics by EPA 8021									
Benzene	ND	0.05	mg/kg	1	1418009	04/29/14	04/29/14	EPA 8021B	
Toluene	ND	0.05	mg/kg	1	1418009	04/29/14	04/29/14	EPA 8021B	
Ethylbenzene	ND	0.05	mg/kg	1	1418009	04/29/14	04/29/14	EPA 8021B	
p,m-Xylene	ND	0.05	mg/kg	1	1418009	04/29/14	04/29/14	EPA 8021B	
o-Xylene	ND	0.05	mg/kg	1	1418009	04/29/14	04/29/14	EPA 8021B	
Total Xylenes	ND	0.05	mg/kg	1	1418009	04/29/14	04/29/14	EPA 8021B	
Total BTEX	ND	0.05	mg/kg	1	1418009	04/29/14	04/29/14	EPA 8021B	
Surrogate: Bromochlorobenzene		106 %	80-120		1418009	04/29/14	04/29/14	EPA 8021B	
Surrogate: 1,3-Dichlorobenzene		102 %	80-120		1418009	04/29/14	04/29/14	EPA 8021B	
Nonhalogenated Organics by 8015									
Gasoline Range Organics (C6-C10)	ND	5.00	mg/kg	1	1418009	04/29/14	04/29/14	EPA 8015D	
Diesel Range Organics (C10-C28)	ND	29.9	mg/kg	1	1418010	04/29/14	04/29/14	EPA 8015D	

Partial or incomplete reproduction of this report is prohibited, unless approved by Envirotech, Inc.

5796 US Highway 64, Farmington, NM 87401

Ph (505) 632-0615 Fx (505) 632-1865

Three Springs • 65 Mercado Street, Suite 115, Durango, CO 81301

Ph (970) 259-0615 Fr (800) 362-1879

envirotech-inc.com
laboratory@envirotech-inc.com

Apex TITAN, Inc.
 606 S. Rio Grand, Suite A
 Aztec NM, 87410

Project Name: Cohn #1
 Project Number: 07174-0003
 Project Manager: Kyle Summers

Reported:
 30-Apr-14 12:58

S-19

P404111-02 (Solid)

Analyte	Result	Reporting Limit	Units	Dilution	Batch	Prepared	Analyzed	Method	Notes
Volatile Organics by EPA 8021									
Benzene	ND	0.05	mg/kg	1	1418009	04/29/14	04/29/14	EPA 8021B	
Toluene	ND	0.05	mg/kg	1	1418009	04/29/14	04/29/14	EPA 8021B	
Ethylbenzene	ND	0.05	mg/kg	1	1418009	04/29/14	04/29/14	EPA 8021B	
p,m-Xylene	ND	0.05	mg/kg	1	1418009	04/29/14	04/29/14	EPA 8021B	
o-Xylene	ND	0.05	mg/kg	1	1418009	04/29/14	04/29/14	EPA 8021B	
Total Xylenes	ND	0.05	mg/kg	1	1418009	04/29/14	04/29/14	EPA 8021B	
Total BTEX	ND	0.05	mg/kg	1	1418009	04/29/14	04/29/14	EPA 8021B	
Surrogate: Bromochlorobenzene		101 %		80-120	1418009	04/29/14	04/29/14	EPA 8021B	
Surrogate: 1,3-Dichlorobenzene		96.1 %		80-120	1418009	04/29/14	04/29/14	EPA 8021B	
Nonhalogenated Organics by 8015									
Gasoline Range Organics (C6-C10)	ND	4.99	mg/kg	1	1418009	04/29/14	04/29/14	EPA 8015D	
Diesel Range Organics (C10-C28)	ND	30.0	mg/kg	1	1418010	04/29/14	04/29/14	EPA 8015D	

Partial or incomplete reproduction of this report is prohibited, unless approved by Envirotech, Inc.



Apex TITAN, Inc. 606 S. Rio Grand, Suite A Aztec NM, 87410	Project Name: Cohn #1 Project Number: 07174-0003 Project Manager: Kyle Summers	Reported: 30-Apr-14 12:58
--	--	------------------------------

S-20

P404111-03 (Solid)

Analyte	Result	Reporting Limit	Units	Dilution	Batch	Prepared	Analyzed	Method	Notes
Volatile Organics by EPA 8021									
Benzene	ND	0.05	mg/kg	1	1418009	04/29/14	04/29/14	EPA 8021B	
Toluene	ND	0.05	mg/kg	1	1418009	04/29/14	04/29/14	EPA 8021B	
Ethylbenzene	ND	0.05	mg/kg	1	1418009	04/29/14	04/29/14	EPA 8021B	
p,m-Xylene	ND	0.05	mg/kg	1	1418009	04/29/14	04/29/14	EPA 8021B	
o-Xylene	ND	0.05	mg/kg	1	1418009	04/29/14	04/29/14	EPA 8021B	
Total Xylenes	ND	0.05	mg/kg	1	1418009	04/29/14	04/29/14	EPA 8021B	
Total BTEX	ND	0.05	mg/kg	1	1418009	04/29/14	04/29/14	EPA 8021B	
Surrogate: Bromochlorobenzene		102 %		80-120	1418009	04/29/14	04/29/14	EPA 8021B	
Surrogate: 1,3-Dichlorobenzene		95.4 %		80-120	1418009	04/29/14	04/29/14	EPA 8021B	
Nonhalogenated Organics by 8015									
Gasoline Range Organics (C6-C10)	ND	4.99	mg/kg	1	1418009	04/29/14	04/29/14	EPA 8015D	
Diesel Range Organics (C10-C28)	ND	29.9	mg/kg	1	1418010	04/29/14	04/29/14	EPA 8015D	

Partial or incomplete reproduction of this report is prohibited, unless approved by Envirotech, Inc.

5796 US Highway 64, Farmington, NM 87401

Three Springs - 65 Mercado Street, Suite 115, Durango, CO 81301

Ph (505) 632-0615 Fx (505) 632-1865

Ph (970) 259-0615 Fr (800) 362-1879

envirotech-inc.com

laboratory@envirotech-inc.com



Apex TITAN, Inc. 606 S. Rio Grand, Suite A Aztec NM, 87410	Project Name: Cohn #1 Project Number: 07174-0003 Project Manager: Kyle Summers	Reported: 30-Apr-14 12:58
--	--	------------------------------

S-21

P404111-04 (Solid)

Analyte	Result	Reporting Limit	Units	Dilution	Batch	Prepared	Analyzed	Method	Notes
Volatile Organics by EPA 8021									
Benzene	ND	0.05	mg/kg	1	1418009	04/29/14	04/29/14	EPA 8021B	
Toluene	ND	0.05	mg/kg	1	1418009	04/29/14	04/29/14	EPA 8021B	
Ethylbenzene	ND	0.05	mg/kg	1	1418009	04/29/14	04/29/14	EPA 8021B	
p,m-Xylene	ND	0.05	mg/kg	1	1418009	04/29/14	04/29/14	EPA 8021B	
o-Xylene	ND	0.05	mg/kg	1	1418009	04/29/14	04/29/14	EPA 8021B	
Total Xylenes	ND	0.05	mg/kg	1	1418009	04/29/14	04/29/14	EPA 8021B	
Total BTEX	ND	0.05	mg/kg	1	1418009	04/29/14	04/29/14	EPA 8021B	
Surrogate: Bromochlorobenzene		100 %		80-120	1418009	04/29/14	04/29/14	EPA 8021B	
Surrogate: 1,3-Dichlorobenzene		95.2 %		80-120	1418009	04/29/14	04/29/14	EPA 8021B	
Nonhalogenated Organics by 8015									
Gasoline Range Organics (C6-C10)	ND	0.10	mg/kg	0.02	1418009	04/29/14	04/29/14	EPA 8015D	
Diesel Range Organics (C10-C28)	ND	29.9	mg/kg	1	1418010	04/29/14	04/29/14	EPA 8015D	

Partial or incomplete reproduction of this report is prohibited, unless approved by Envirotech, Inc.

5796 US Highway 64, Farmington, NM 87401

Ph (505) 632-0615 Fx (505) 632-1865

Three Springs - 65 Mercado Street, Suite 115, Durango, CO 81301

Ph (970) 259-0615 Fr (800) 362-1879

envirotech-inc.com
laboratory@envirotech-inc.com



Apex TITAN, Inc. 606 S. Rio Grand, Suite A Aztec NM, 87410	Project Name: Cohn #1 Project Number: 07174-0003 Project Manager: Kyle Summers	Reported: 30-Apr-14 12:58
--	--	------------------------------

Volatile Organics by EPA 8021 - Quality Control
Envirotech Analytical Laboratory

Analyte	Result	Reporting Limit	Units	Spike Level	Source Result	%REC	%REC Limits	RPD	RPD Limit	Notes
---------	--------	-----------------	-------	-------------	---------------	------	-------------	-----	-----------	-------

Batch 1418009 - Purge and Trap EPA 5030A

Blank (1418009-BLK1)				Prepared & Analyzed: 29-Apr-14						
Benzene	ND	0.05	mg/kg							
Toluene	ND	0.05	"							
Ethylbenzene	ND	0.05	"							
p,m-Xylene	ND	0.05	"							
o-Xylene	ND	0.05	"							
Total Xylenes	ND	0.05	"							
Total BTEX	ND	0.05	"							
Surrogate: 1,3-Dichlorobenzene	48.9		ug/L	50.0		97.8	80-120			
Surrogate: Bromochlorobenzene	51.6		"	50.0		103	80-120			

Duplicate (1418009-DUP1)				Source: P404111-01		Prepared & Analyzed: 29-Apr-14				
Benzene	ND	0.05	mg/kg		ND				30	
Toluene	ND	0.05	"		ND				30	
Ethylbenzene	ND	0.05	"		ND				30	
p,m-Xylene	ND	0.05	"		ND				30	
o-Xylene	ND	0.05	"		ND				30	
Surrogate: 1,3-Dichlorobenzene	49.2		ug/L	50.0		98.4	80-120			
Surrogate: Bromochlorobenzene	51.5		"	50.0		103	80-120			

Matrix Spike (1418009-MS1)				Source: P404111-01		Prepared & Analyzed: 29-Apr-14				
Benzene	48.4		ug/L	50.0	ND	96.8	39-150			
Toluene	48.8		"	50.0	ND	97.6	46-148			
Ethylbenzene	49.1		"	50.0	ND	98.2	32-160			
p,m-Xylene	98.5		"	100	ND	98.5	46-148			
o-Xylene	49.1		"	50.0	ND	98.2	46-148			
Surrogate: 1,3-Dichlorobenzene	47.8		"	50.0		95.6	80-120			
Surrogate: Bromochlorobenzene	49.0		"	50.0		98.1	80-120			

Partial or incomplete reproduction of this report is prohibited, unless approved by Envirotech, Inc.

5796 US Highway 64, Farmington, NM 87401

Three Springs • 65 Mercado Street, Suite 115, Durango, CO 81301

Ph (505) 632-0615 Fx (505) 632-1865

Ph (970) 259-0615 Fr (800) 362-1879

envirotech-inc.com
laboratory@envirotech-inc.com



Apex TITAN, Inc. 606 S. Rio Grand, Suite A Aztec NM, 87410	Project Name: Cohn #1 Project Number: 07174-0003 Project Manager: Kyle Summers	Reported: 30-Apr-14 12:58
--	--	------------------------------

Nonhalogenated Organics by 8015 - Quality Control

Envirotech Analytical Laboratory

Analyte	Result	Reporting Limit	Units	Spike Level	Source Result	%REC	%REC Limits	RPD	RPD Limit	Notes
Batch 1418009 - Purge and Trap EPA 5030A										
Blank (1418009-BLK1)				Prepared & Analyzed: 29-Apr-14						
Gasoline Range Organics (C6-C10)	ND	4.99	mg/kg							
Duplicate (1418009-DUP1)				Source: P404111-01 Prepared & Analyzed: 29-Apr-14						
Gasoline Range Organics (C6-C10)	ND	5.00	mg/kg		ND				30	
Matrix Spike (1418009-MS1)				Source: P404111-01 Prepared & Analyzed: 29-Apr-14						
Gasoline Range Organics (C6-C10)	0.47		mg/L	0.450	ND	105	75-125			

Partial or incomplete reproduction of this report is prohibited, unless approved by Envirotech, Inc.

5796 US Highway 64, Farmington, NM 87401

Three Springs - 65 Mercado Street, Suite 115, Durango, CO 81301

Ph (505) 632-0615 Fx (505) 632-1865

Ph (970) 259-0615 Fr (800) 362-1879

envirotech-inc.com
laboratory@envirotech-inc.com



Apex TITAN, Inc. 606 S. Rio Grand, Suite A Aztec NM, 87410	Project Name: Cohn #1 Project Number: 07174-0003 Project Manager: Kyle Summers	Reported: 30-Apr-14 12:58
--	--	------------------------------

Nonhalogenated Organics by 8015 - Quality Control

Envirotech Analytical Laboratory

Analyte	Result	Reporting Limit	Units	Spike Level	Source Result	%REC	%REC Limits	RPD	RPD Limit	Notes
Batch 1418010 - DRO Extraction EPA 3550C										
Blank (1418010-BLK1)				Prepared & Analyzed: 29-Apr-14						
Diesel Range Organics (C10-C28)	ND	29.9	mg/kg							
Duplicate (1418010-DUP1)				Source: P404111-01 Prepared & Analyzed: 29-Apr-14						
Diesel Range Organics (C10-C28)	ND	29.9	mg/kg		ND				30	
Matrix Spike (1418010-MS1)				Source: P404111-01 Prepared & Analyzed: 29-Apr-14						
Diesel Range Organics (C10-C28)	222		mg/L	250	12.4	84.0	75-125			

Partial or incomplete reproduction of this report is prohibited, unless approved by Envirotech, Inc.

5796 US Highway 64, Farmington, NM 87401

Three Springs - 65 Mercado Street, Suite 115, Durango, CO 81301

Ph (505) 632-0615 Fx (505) 632-1865

Ph (970) 259-0615 Fr (800) 362-1879

envirotech-inc.com

laboratory@envirotech-inc.com



Apex TITAN, Inc.
606 S. Rio Grand, Suite A
Aztec NM, 87410

Project Name: Cohn #1
Project Number: 07174-0003
Project Manager: Kyle Summers

Reported:
30-Apr-14 12:58

Notes and Definitions

DET Analyte DETECTED
ND Analyte NOT DETECTED at or above the reporting limit
NR Not Reported
dry Sample results reported on a dry weight basis
RPD Relative Percent Difference

Partial or incomplete reproduction of this report is prohibited, unless approved by Envirotech, Inc.

5796 US Highway 64, Farmington, NM 87401

Three Springs - 65 Mercado Street, Suite 115, Durango, CO 81301

Ph (505) 632-0615 Fx (505) 632-1865

Ph (970) 259-0615 Fr (800) 362-1879

envirotech-inc.com
laboratory@envirotech-inc.com

16914

5795 US Highway 64 • Farmington, NM 87401 • 505-632-0615 • Three Springs • 65 Mercado Street, Suite 115, Durango, CO 81301 • laboratory@envirotech-inc.com



Analytical Report

Report Summary

Client: Apex TITAN, Inc.

Chain Of Custody Number: 16940

Samples Received: 4/29/2014 2:40:00PM

Job Number: 07174-0003

Work Order: P404115

Project Name/Location: Cohn #1

Entire Report Reviewed By:

A handwritten signature in black ink, appearing to read 'Tim Cain', is written over a horizontal line.

Tim Cain, Laboratory Manager

Date: 5/1/14

The results in this report apply to the samples submitted to Envirotech's Analytical Laboratory and were analyzed in accordance with the chain of custody document supplied by you, the client, and as such are for your exclusive use only. The results in this report are based on the sample as received unless otherwise noted. Partial or incomplete reproduction of this report is prohibited, unless approved by Envirotech, Inc. If you have any questions regarding this analytical report, please don't hesitate to contact Envirotech's Laboratory Staff.



Apex TITAN, Inc.
606 S. Rio Grand, Suite A
Aztec NM, 87410

Project Name: Cohn #1
Project Number: 07174-0003
Project Manager: Kyle Summers

Reported:
01-May-14 13:50

Analytical Report for Samples

Client Sample ID	Lab Sample ID	Matrix	Sampled	Received	Container
S-22	P404115-01A	Soil	04/29/14	04/29/14	Glass Jar, 4 oz.
S-23	P404115-02A	Soil	04/29/14	04/29/14	Glass Jar, 4 oz.
S-24	P404115-03A	Soil	04/29/14	04/29/14	Glass Jar, 4 oz.
S-25	P404115-04A	Soil	04/29/14	04/29/14	Glass Jar, 4 oz.
S-26	P404115-05A	Soil	04/29/14	04/29/14	Glass Jar, 4 oz.

Partial or incomplete reproduction of this report is prohibited, unless approved by Envirotech, Inc.

5796 US Highway 64, Farmington, NM 87401

Three Springs - 65 Mercado Street, Suite 115, Durango, CO 81301

Ph (505) 632-0615 Fx (505) 632-1865

Ph (970) 259-0615 Fr (800) 362-1879

envirotech-inc.com
laboratory@envirotech-inc.com



Apex TITAN, Inc. 606 S. Rio Grand, Suite A Aztec NM, 87410	Project Name: Cohn #1 Project Number: 07174-0003 Project Manager: Kyle Summers	Reported: 01-May-14 13:50
--	--	------------------------------

S-22

P404115-01 (Solid)

Analyte	Result	Reporting		Units	Dilution	Batch	Prepared	Analyzed	Method	Notes
		Limit								
Volatile Organics by EPA 8021										
Benzene	ND	0.05	mg/kg	1		1418009	04/30/14	04/30/14	EPA 8021B	
Toluene	ND	0.05	mg/kg	1		1418009	04/30/14	04/30/14	EPA 8021B	
Ethylbenzene	ND	0.05	mg/kg	1		1418009	04/30/14	04/30/14	EPA 8021B	
p,m-Xylene	ND	0.05	mg/kg	1		1418009	04/30/14	04/30/14	EPA 8021B	
o-Xylene	ND	0.05	mg/kg	1		1418009	04/30/14	04/30/14	EPA 8021B	
Total Xylenes	ND	0.05	mg/kg	1		1418009	04/30/14	04/30/14	EPA 8021B	
Total BTEX	ND	0.05	mg/kg	1		1418009	04/30/14	04/30/14	EPA 8021B	
Surrogate: Bromochlorobenzene		98.6 %	80-120			1418009	04/30/14	04/30/14	EPA 8021B	
Surrogate: 1,3-Dichlorobenzene		96.3 %	80-120			1418009	04/30/14	04/30/14	EPA 8021B	
Nonhalogenated Organics by 8015										
Gasoline Range Organics (C6-C10)	ND	4.99	mg/kg	1		1418009	04/30/14	04/30/14	EPA 8015D	
Diesel Range Organics (C10-C28)	ND	29.9	mg/kg	1		1418010	04/30/14	04/30/14	EPA 8015D	

Partial or incomplete reproduction of this report is prohibited, unless approved by Envirotech, Inc.

5796 US Highway 64, Farmington, NM 87401

Ph (505) 632-0615 Fx (505) 632-1865

Three Springs - 65 Mercado Street, Suite 115, Durango, CO 81301

Ph (970) 259-0615 Fr (800) 362-1879

envirotech-inc.com
laboratory@envirotech-inc.com

Apex TITAN, Inc. 606 S. Rio Grand, Suite A Aztec NM, 87410	Project Name: Cohn #1 Project Number: 07174-0003 Project Manager: Kyle Summers	Reported: 01-May-14 13:50
--	--	------------------------------

S-23
P404115-02 (Solid)

Analyte	Result	Reporting		Units	Dilution	Batch	Prepared	Analyzed	Method	Notes
		Limit								
Volatile Organics by EPA 8021										
Benzene	ND	0.05	mg/kg	1		1418009	04/30/14	04/30/14	EPA 8021B	
Toluene	ND	0.05	mg/kg	1		1418009	04/30/14	04/30/14	EPA 8021B	
Ethylbenzene	ND	0.05	mg/kg	1		1418009	04/30/14	04/30/14	EPA 8021B	
p,m-Xylene	ND	0.05	mg/kg	1		1418009	04/30/14	04/30/14	EPA 8021B	
o-Xylene	ND	0.05	mg/kg	1		1418009	04/30/14	04/30/14	EPA 8021B	
Total Xylenes	ND	0.05	mg/kg	1		1418009	04/30/14	04/30/14	EPA 8021B	
Total BTEX	ND	0.05	mg/kg	1		1418009	04/30/14	04/30/14	EPA 8021B	
Surrogate: 1,3-Dichlorobenzene		94.0 %	80-120			1418009	04/30/14	04/30/14	EPA 8021B	
Surrogate: Bromochlorobenzene		96.4 %	80-120			1418009	04/30/14	04/30/14	EPA 8021B	
Nonhalogenated Organics by 8015										
Gasoline Range Organics (C6-C10)	ND	5.00	mg/kg	1		1418009	04/30/14	04/30/14	EPA 8015D	
Diesel Range Organics (C10-C28)	ND	30.0	mg/kg	1		1418010	04/30/14	04/30/14	EPA 8015D	

Partial or incomplete reproduction of this report is prohibited, unless approved by Envirotech, Inc.

Apex TITAN, Inc.
 606 S. Rio Grand, Suite A
 Aztec NM, 87410

Project Name: Cohn #1
 Project Number: 07174-0003
 Project Manager: Kyle Summers

Reported:
 01-May-14 13:50

S-24

P404115-03 (Solid)

Analyte	Result	Reporting		Units	Dilution	Batch	Prepared	Analyzed	Method	Notes
		Limit								
Volatile Organics by EPA 8021										
Benzene	ND	0.05	mg/kg	1		1418009	04/30/14	04/30/14	EPA 8021B	
Toluene	ND	0.05	mg/kg	1		1418009	04/30/14	04/30/14	EPA 8021B	
Ethylbenzene	ND	0.05	mg/kg	1		1418009	04/30/14	04/30/14	EPA 8021B	
p,m-Xylene	ND	0.05	mg/kg	1		1418009	04/30/14	04/30/14	EPA 8021B	
o-Xylene	ND	0.05	mg/kg	1		1418009	04/30/14	04/30/14	EPA 8021B	
Total Xylenes	ND	0.05	mg/kg	1		1418009	04/30/14	04/30/14	EPA 8021B	
Total BTEX	ND	0.05	mg/kg	1		1418009	04/30/14	04/30/14	EPA 8021B	
Surrogate: Bromochlorobenzene		97.8 %		80-120		1418009	04/30/14	04/30/14	EPA 8021B	
Surrogate: 1,3-Dichlorobenzene		95.2 %		80-120		1418009	04/30/14	04/30/14	EPA 8021B	
Nonhalogenated Organics by 8015										
Gasoline Range Organics (C6-C10)	ND	4.99	mg/kg	1		1418009	04/30/14	04/30/14	EPA 8015D	
Diesel Range Organics (C10-C28)	ND	29.9	mg/kg	1		1418010	04/30/14	04/30/14	EPA 8015D	

Partial or incomplete reproduction of this report is prohibited, unless approved by Envirotech, Inc.



Apex TITAN, Inc. 606 S. Rio Grand, Suite A Aztec NM, 87410	Project Name: Cohn #1 Project Number: 07174-0003 Project Manager: Kyle Summers	Reported: 01-May-14 13:50
--	--	------------------------------

S-25

P404115-04 (Solid)

Analyte	Result	Reporting		Units	Dilution	Batch	Prepared	Analyzed	Method	Notes
		Limit								
Volatile Organics by EPA 8021										
Benzene	ND	0.05	mg/kg	1		1418009	04/30/14	04/30/14	EPA 8021B	
Toluene	ND	0.05	mg/kg	1		1418009	04/30/14	04/30/14	EPA 8021B	
Ethylbenzene	ND	0.05	mg/kg	1		1418009	04/30/14	04/30/14	EPA 8021B	
p,m-Xylene	ND	0.05	mg/kg	1		1418009	04/30/14	04/30/14	EPA 8021B	
o-Xylene	ND	0.05	mg/kg	1		1418009	04/30/14	04/30/14	EPA 8021B	
Total Xylenes	ND	0.05	mg/kg	1		1418009	04/30/14	04/30/14	EPA 8021B	
Total BTEX	ND	0.05	mg/kg	1		1418009	04/30/14	04/30/14	EPA 8021B	
Surrogate: Bromochlorobenzene		97.0 %		80-120		1418009	04/30/14	04/30/14	EPA 8021B	
Surrogate: 1,3-Dichlorobenzene		93.4 %		80-120		1418009	04/30/14	04/30/14	EPA 8021B	
Nonhalogenated Organics by 8015										
Gasoline Range Organics (C6-C10)	ND	4.99	mg/kg	1		1418009	04/30/14	04/30/14	EPA 8015D	
Diesel Range Organics (C10-C28)	30.5	30.0	mg/kg	1		1418010	04/30/14	04/30/14	EPA 8015D	

Partial or incomplete reproduction of this report is prohibited, unless approved by Envirotech, Inc.

5796 US Highway 64, Farmington, NM 87401

Three Springs • 65 Mercado Street, Suite 115, Durango, CO 81301

Ph (505) 632-0615 Fx (505) 632-1865

Ph (970) 259-0615 Fr (800) 362-1879

envirotech-inc.com

laboratory@envirotech-inc.com



Apex TITAN, Inc. 606 S. Rio Grand, Suite A Aztec NM, 87410	Project Name: Cohn #1 Project Number: 07174-0003 Project Manager: Kyle Summers	Reported: 01-May-14 13:50
--	--	------------------------------

S-26

P404115-05 (Solid)

Analyte	Result	Reporting		Dilution	Batch	Prepared	Analyzed	Method	Notes
		Limit	Units						
Volatile Organics by EPA 8021									
Benzene	ND	0.05	mg/kg	1	1418009	04/30/14	04/30/14	EPA 8021B	
Toluene	ND	0.05	mg/kg	1	1418009	04/30/14	04/30/14	EPA 8021B	
Ethylbenzene	ND	0.05	mg/kg	1	1418009	04/30/14	04/30/14	EPA 8021B	
p,m-Xylene	ND	0.05	mg/kg	1	1418009	04/30/14	04/30/14	EPA 8021B	
o-Xylene	ND	0.05	mg/kg	1	1418009	04/30/14	04/30/14	EPA 8021B	
Total Xylenes	ND	0.05	mg/kg	1	1418009	04/30/14	04/30/14	EPA 8021B	
Total BTEX	ND	0.05	mg/kg	1	1418009	04/30/14	04/30/14	EPA 8021B	
Surrogate: 1,3-Dichlorobenzene		89.1 %		80-120	1418009	04/30/14	04/30/14	EPA 8021B	
Surrogate: Bromochlorobenzene		92.6 %		80-120	1418009	04/30/14	04/30/14	EPA 8021B	
Nonhalogenated Organics by 8015									
Gasoline Range Organics (C6-C10)	ND	4.99	mg/kg	1	1418009	04/30/14	04/30/14	EPA 8015D	
Diesel Range Organics (C10-C28)	ND	30.0	mg/kg	1	1418010	04/30/14	04/30/14	EPA 8015D	

Partial or incomplete reproduction of this report is prohibited, unless approved by Envirotech, Inc.

5796 US Highway 64, Farmington, NM 87401

Ph (505) 632-0615 Fx (505) 632-1865

Three Springs - 65 Mercado Street, Suite 115, Durango, CO 81301

Ph (970) 259-0615 Fr (800) 362-1879

envirotech-inc.com
laboratory@envirotech-inc.com



Apex TITAN, Inc. 606 S. Rio Grand, Suite A Aztec NM, 87410	Project Name: Cohn #1 Project Number: 07174-0003 Project Manager: Kyle Summers	Reported: 01-May-14 13:50
--	--	------------------------------

Volatile Organics by EPA 8021 - Quality Control
Envirotech Analytical Laboratory

Analyte	Result	Reporting Limit	Units	Spike Level	Source Result	%REC	%REC Limits	RPD	RPD Limit	Notes
---------	--------	-----------------	-------	-------------	---------------	------	-------------	-----	-----------	-------

Batch 1418009 - Purge and Trap EPA 5030A

Blank (1418009-BLK1)				Prepared & Analyzed: 29-Apr-14						
Benzene	ND	0.05	mg/kg							
Toluene	ND	0.05	"							
Ethylbenzene	ND	0.05	"							
p,m-Xylene	ND	0.05	"							
o-Xylene	ND	0.05	"							
Total Xylenes	ND	0.05	"							
Total BTEX	ND	0.05	"							
Surrogate: 1,3-Dichlorobenzene	48.9		ug/L	50.0		97.8	80-120			
Surrogate: Bromochlorobenzene	51.6		"	50.0		103	80-120			

Duplicate (1418009-DUP1)				Source: P404111-01	Prepared & Analyzed: 29-Apr-14					
Benzene	ND	0.05	mg/kg		ND				30	
Toluene	ND	0.05	"		ND				30	
Ethylbenzene	ND	0.05	"		ND				30	
p,m-Xylene	ND	0.05	"		ND				30	
o-Xylene	ND	0.05	"		ND				30	
Surrogate: 1,3-Dichlorobenzene	49.2		ug/L	50.0		98.4	80-120			
Surrogate: Bromochlorobenzene	51.5		"	50.0		103	80-120			

Matrix Spike (1418009-MS1)				Source: P404111-01	Prepared & Analyzed: 29-Apr-14					
Benzene	48.4		ug/L	50.0	ND	96.8	39-150			
Toluene	48.8		"	50.0	ND	97.6	46-148			
Ethylbenzene	49.1		"	50.0	ND	98.2	32-160			
p,m-Xylene	98.5		"	100	ND	98.5	46-148			
o-Xylene	49.1		"	50.0	ND	98.2	46-148			
Surrogate: 1,3-Dichlorobenzene	47.8		"	50.0		95.6	80-120			
Surrogate: Bromochlorobenzene	49.0		"	50.0		98.1	80-120			

Partial or incomplete reproduction of this report is prohibited, unless approved by Envirotech, Inc.

5796 US Highway 64, Farmington, NM 87401

Three Springs • 65 Mercado Street, Suite 115, Durango, CO 81301

Ph (505) 632-0615 Fx (505) 632-1865

Ph (970) 259-0615 Fr (800) 362-1879

envirotech-inc.com
laboratory@envirotech-inc.com



Apex TITAN, Inc. 606 S. Rio Grand, Suite A Aztec NM, 87410	Project Name: Cohn #1 Project Number: 07174-0003 Project Manager: Kyle Summers	Reported: 01-May-14 13:50
--	--	------------------------------

Nonhalogenated Organics by 8015 - Quality Control

Envirotech Analytical Laboratory

Analyte	Result	Reporting Limit	Units	Spike Level	Source Result	%REC	%REC Limits	RPD	RPD Limit	Notes
---------	--------	-----------------	-------	-------------	---------------	------	-------------	-----	-----------	-------

Batch 1418009 - Purge and Trap EPA 5030A

Blank (1418009-BLK1)		Prepared & Analyzed: 29-Apr-14								
Gasoline Range Organics (C6-C10)	ND	4.99	mg/kg							
Duplicate (1418009-DUP1)		Source: P404111-01		Prepared & Analyzed: 29-Apr-14						
Gasoline Range Organics (C6-C10)	ND	5.00	mg/kg		ND				30	
Matrix Spike (1418009-MS1)		Source: P404111-01		Prepared & Analyzed: 29-Apr-14						
Gasoline Range Organics (C6-C10)	0.47		mg/L	0.450	ND	105	75-125			

Partial or incomplete reproduction of this report is prohibited, unless approved by Envirotech, Inc.

5796 US Highway 64, Farmington, NM 87401

Three Springs - 65 Mercado Street, Suite 115, Durango, CO 81301

Ph (505) 632-0615 Fx (505) 632-1865

Ph (970) 259-0615 Fr (800) 362-1879

envirotech-inc.com

laboratory@envirotech-inc.com



Apex TITAN, Inc. 606 S. Rio Grand, Suite A Aztec NM, 87410	Project Name: Cohn #1 Project Number: 07174-0003 Project Manager: Kyle Summers	Reported: 01-May-14 13:50
--	--	------------------------------

Nonhalogenated Organics by 8015 - Quality Control

Envirotech Analytical Laboratory

Analyte	Result	Reporting Limit	Units	Spike Level	Source Result	%REC	%REC Limits	RPD	RPD Limit	Notes
---------	--------	--------------------	-------	----------------	------------------	------	----------------	-----	--------------	-------

Batch 1418010 - DRO Extraction EPA 3550C

Blank (1418010-BLK1)		Prepared & Analyzed: 29-Apr-14								
Diesel Range Organics (C10-C28)	ND	29.9	mg/kg							
Duplicate (1418010-DUP1)		Source: P404111-01		Prepared & Analyzed: 29-Apr-14						
Diesel Range Organics (C10-C28)	ND	29.9	mg/kg		ND				30	
Matrix Spike (1418010-MS1)		Source: P404111-01		Prepared & Analyzed: 29-Apr-14						
Diesel Range Organics (C10-C28)	222		mg/L	250	12.4	84.0	75-125			

Partial or incomplete reproduction of this report is prohibited, unless approved by Envirotech, Inc.

5796 US Highway 64, Farmington, NM 87401

Three Springs - 65 Mercado Street, Suite 115, Durango, CO 81301

Ph (505) 632-0615 Fx (505) 632-1865

Ph (970) 259-0615 Fr (800) 362-1879

envirotech-inc.com

laboratory@envirotech-inc.com



Apex TITAN, Inc.
606 S. Rio Grand, Suite A
Aztec NM, 87410

Project Name: Cohn #1
Project Number: 07174-0003
Project Manager: Kyle Summers

Reported:
01-May-14 13:50

Notes and Definitions

DET Analyte DETECTED
ND Analyte NOT DETECTED at or above the reporting limit
NR Not Reported
dry Sample results reported on a dry weight basis
RPD Relative Percent Difference

Partial or incomplete reproduction of this report is prohibited, unless approved by Envirotech, Inc.

5796 US Highway 64, Farmington, NM 87401

Three Springs • 65 Mercado Street, Suite 115, Durango, CO 81301

Ph (505) 632-0615 Fx (505) 632-1865

Ph (970) 259-0615 Fr (800) 362-1879

envirotech-inc.com
laboratory@envirotech-inc.com

16940

san juan reproduction 578-129



Hall Environmental Analysis Laboratory
4901 Hawkins NE
Albuquerque, NM 87109
TEL: 505-345-3975 FAX: 505-345-4107
Website: www.hallenvironmental.com

April 14, 2014

Kyle Summers
Southwest Geoscience
606 S. Rio Grande Unit A
Aztec, NM 87410
TEL: (903) 821-5603
FAX (214) 350-2914

RE: COHN #1

OrderNo.: 1404314

Dear Kyle Summers:

Hall Environmental Analysis Laboratory received 2 sample(s) on 4/8/2014 for the analyses presented in the following report.

These were analyzed according to EPA procedures or equivalent. To access our accredited tests please go to www.hallenvironmental.com or the state specific web sites. In order to properly interpret your results it is imperative that you review this report in its entirety. See the sample checklist and/or the Chain of Custody for information regarding the sample receipt temperature and preservation. Data qualifiers or a narrative will be provided if the sample analysis or analytical quality control parameters require a flag. When necessary, data qualifiers are provided on both the sample analysis report and the QC summary report, both sections should be reviewed. All samples are reported, as received, unless otherwise indicated. Lab measurement of analytes considered field parameters that require analysis within 15 minutes of sampling such as pH and residual chlorine are qualified as being analyzed outside of the recommended holding time.

Please don't hesitate to contact HEAL for any additional information or clarifications.

ADHS Cert #AZ0682 -- NMED-DWB Cert #NM9425 -- NMED-Micro Cert #NM0190

Sincerely,

Andy Freeman
Laboratory Manager
4901 Hawkins NE
Albuquerque, NM 87109

Hall Environmental Analysis Laboratory, Inc.

CLIENT: Southwest Geoscience

Client Sample ID: SP-1

Project: COHN #1

Collection Date: 4/7/2014 11:40:00 AM

Lab ID: 1404314-001

Matrix: SOIL

Received Date: 4/8/2014 10:00:00 AM

Analyses	Result	RL	Qual	Units	DF	Date Analyzed	Batch
EPA METHOD 8015D: DIESEL RANGE ORGANICS							Analyst: BCN
Diesel Range Organics (DRO)	1900	99		mg/Kg	10	4/10/2014 3:49:47 PM	12586
Surr: DNOP	0	66-131	S	%REC	10	4/10/2014 3:49:47 PM	12586
EPA METHOD 8015D: GASOLINE RANGE							Analyst: NSB
Gasoline Range Organics (GRO)	120	25		mg/Kg	5	4/9/2014 12:01:21 PM	12598
Surr: BFB	204	74.5-129	S	%REC	5	4/9/2014 12:01:21 PM	12598
EPA METHOD 8021B: VOLATILES							Analyst: NSB
Benzene	ND	0.12		mg/Kg	5	4/9/2014 12:01:21 PM	12598
Toluene	ND	0.25		mg/Kg	5	4/9/2014 12:01:21 PM	12598
Ethylbenzene	ND	0.25		mg/Kg	5	4/9/2014 12:01:21 PM	12598
Xylenes, Total	3.2	0.50		mg/Kg	5	4/9/2014 12:01:21 PM	12598
Surr: 4-Bromofluorobenzene	118	80-120		%REC	5	4/9/2014 12:01:21 PM	12598

Refer to the QC Summary report and sample login checklist for flagged QC data and preservation information.

Qualifiers:	* Value exceeds Maximum Contaminant Level.	B Analyte detected in the associated Method Blank
	E Value above quantitation range	H Holding times for preparation or analysis exceeded
	J Analyte detected below quantitation limits	ND Not Detected at the Reporting Limit
	O RSD is greater than RSDlimit	P Sample pH greater than 2.
	R RPD outside accepted recovery limits	RL Reporting Detection Limit
	S Spike Recovery outside accepted recovery limits	

Hall Environmental Analysis Laboratory, Inc.

CLIENT: Southwest Geoscience

Client Sample ID: SP-2

Project: COHN #1

Collection Date: 4/7/2014 11:45:00 AM

Lab ID: 1404314-002

Matrix: SOIL

Received Date: 4/8/2014 10:00:00 AM

Analyses	Result	RL	Qual	Units	DF	Date Analyzed	Batch
EPA METHOD 8015D: DIESEL RANGE ORGANICS							Analyst: BCN
Diesel Range Organics (DRO)	1200	99		mg/Kg	10	4/11/2014 9:30:55 AM	12586
Surr: DNOP	0	66-131	S	%REC	10	4/11/2014 9:30:55 AM	12586
EPA METHOD 8015D: GASOLINE RANGE							Analyst: NSB
Gasoline Range Organics (GRO)	110	24		mg/Kg	5	4/9/2014 5:16:21 PM	12598
Surr: BFB	175	74.5-129	S	%REC	5	4/9/2014 5:16:21 PM	12598
EPA METHOD 8021B: VOLATILES							Analyst: NSB
Benzene	ND	0.12		mg/Kg	5	4/9/2014 5:16:21 PM	12598
Toluene	1.5	0.24		mg/Kg	5	4/9/2014 5:16:21 PM	12598
Ethylbenzene	0.38	0.24		mg/Kg	5	4/9/2014 5:16:21 PM	12598
Xylenes, Total	7.2	0.49		mg/Kg	5	4/9/2014 5:16:21 PM	12598
Surr: 4-Bromofluorobenzene	115	80-120		%REC	5	4/9/2014 5:16:21 PM	12598

Refer to the QC Summary report and sample login checklist for flagged QC data and preservation information.

Qualifiers:	*	Value exceeds Maximum Contaminant Level.	B	Analyte detected in the associated Method Blank
	E	Value above quantitation range	H	Holding times for preparation or analysis exceeded
	J	Analyte detected below quantitation limits	ND	Not Detected at the Reporting Limit
	O	RSD is greater than RSDlimit	P	Sample pH greater than 2.
	R	RPD outside accepted recovery limits	RL	Reporting Detection Limit
	S	Spike Recovery outside accepted recovery limits		

QC SUMMARY REPORT

Hall Environmental Analysis Laboratory, Inc.

WO#: 1404314

14-Apr-14

Client: Southwest Geoscience

Project: COHN #1

Sample ID	MB-12586	SampType:	MBLK	TestCode:	EPA Method 8015D: Diesel Range Organics					
Client ID:	PBS	Batch ID:	12586	RunNo:	17898					
Prep Date:	4/8/2014	Analysis Date:	4/10/2014	SeqNo:	516454	Units:	mg/Kg			
Analyte	Result	PQL	SPK value	SPK Ref Val	%REC	LowLimit	HighLimit	%RPD	RPDLimit	Qual
Diesel Range Organics (DRO)	ND	10								
Surr: DNOP	8.1		10.00		80.6	66	131			

Sample ID	LCS-12586	SampType:	LCS	TestCode:	EPA Method 8015D: Diesel Range Organics					
Client ID:	LCSS	Batch ID:	12586	RunNo:	17898					
Prep Date:	4/8/2014	Analysis Date:	4/10/2014	SeqNo:	516498	Units:	mg/Kg			
Analyte	Result	PQL	SPK value	SPK Ref Val	%REC	LowLimit	HighLimit	%RPD	RPDLimit	Qual
Diesel Range Organics (DRO)	59	10	50.00	0	118	60.8	145			
Surr: DNOP	5.4		5.000		109	66	131			

Sample ID	MB-12624	SampType:	MBLK	TestCode:	EPA Method 8015D: Diesel Range Organics					
Client ID:	PBS	Batch ID:	12624	RunNo:	17898					
Prep Date:	4/9/2014	Analysis Date:	4/10/2014	SeqNo:	516973	Units:	%REC			
Analyte	Result	PQL	SPK value	SPK Ref Val	%REC	LowLimit	HighLimit	%RPD	RPDLimit	Qual
Surr: DNOP	9.5		10.00		95.4	66	131			

Sample ID	LCS-12624	SampType:	LCS	TestCode:	EPA Method 8015D: Diesel Range Organics					
Client ID:	LCSS	Batch ID:	12624	RunNo:	17898					
Prep Date:	4/9/2014	Analysis Date:	4/10/2014	SeqNo:	516974	Units:	%REC			
Analyte	Result	PQL	SPK value	SPK Ref Val	%REC	LowLimit	HighLimit	%RPD	RPDLimit	Qual
Surr: DNOP	4.4		5.000		87.9	66	131			

Qualifiers:

- * Value exceeds Maximum Contaminant Level.
- E Value above quantitation range
- J Analyte detected below quantitation limits
- O RSD is greater than RSDlimit
- R RPD outside accepted recovery limits
- S Spike Recovery outside accepted recovery limits

- B Analyte detected in the associated Method Blank
- H Holding times for preparation or analysis exceeded
- ND Not Detected at the Reporting Limit
- P Sample pH greater than 2.
- RL Reporting Detection Limit

QC SUMMARY REPORT

Hall Environmental Analysis Laboratory, Inc.

WO#: 1404314

14-Apr-14

Client: Southwest Geoscience

Project: COHN #1

Sample ID	MB-12598	SampType:	MBLK	TestCode:	EPA Method 8015D: Gasoline Range					
Client ID:	PBS	Batch ID:	12598	RunNo:	17894					
Prep Date:	4/8/2014	Analysis Date:	4/9/2014	SeqNo:	516112	Units:	mg/Kg			
Analyte	Result	PQL	SPK value	SPK Ref Val	%REC	LowLimit	HighLimit	%RPD	RPDLimit	Qual
Gasoline Range Organics (GRO)	ND	5.0								
Surr: BFB	890		1000		88.9	74.5	129			

Sample ID	LCS-12598	SampType:	LCS	TestCode:	EPA Method 8015D: Gasoline Range					
Client ID:	LCSS	Batch ID:	12598	RunNo:	17894					
Prep Date:	4/8/2014	Analysis Date:	4/9/2014	SeqNo:	516113	Units:	mg/Kg			
Analyte	Result	PQL	SPK value	SPK Ref Val	%REC	LowLimit	HighLimit	%RPD	RPDLimit	Qual
Gasoline Range Organics (GRO)	27	5.0	25.00	0	107	71.7	134			
Surr: BFB	980		1000		97.6	74.5	129			

Qualifiers:

- * Value exceeds Maximum Contaminant Level.
- E Value above quantitation range
- J Analyte detected below quantitation limits
- O RSD is greater than RSDlimit
- R RPD outside accepted recovery limits
- S Spike Recovery outside accepted recovery limits

- B Analyte detected in the associated Method Blank
- H Holding times for preparation or analysis exceeded
- ND Not Detected at the Reporting Limit
- P Sample pH greater than 2.
- RL Reporting Detection Limit

QC SUMMARY REPORT

Hall Environmental Analysis Laboratory, Inc.

WO#: 1404314

14-Apr-14

Client: Southwest Geoscience

Project: COHN #1

Sample ID	MB-12598		SampType: MBLK		TestCode: EPA Method 8021B: Volatiles					
Client ID:	PBS		Batch ID: 12598		RunNo: 17894					
Prep Date:	4/8/2014		Analysis Date: 4/9/2014		SeqNo: 516138		Units: mg/Kg			
Analyte	Result	PQL	SPK value	SPK Ref Val	%REC	LowLimit	HighLimit	%RPD	RPDLimit	Qual
Benzene	ND	0.050								
Toluene	ND	0.050								
Ethylbenzene	ND	0.050								
Xylenes, Total	ND	0.10								
Surr: 4-Bromofluorobenzene	1.1		1.000		107	80	120			

Sample ID	LCS-12598		SampType: LCS		TestCode: EPA Method 8021B: Volatiles					
Client ID:	LCSS		Batch ID: 12598		RunNo: 17894					
Prep Date:	4/8/2014		Analysis Date: 4/9/2014		SeqNo: 516139		Units: mg/Kg			
Analyte	Result	PQL	SPK value	SPK Ref Val	%REC	LowLimit	HighLimit	%RPD	RPDLimit	Qual
Benzene	1.1	0.050	1.000	0	111	80	120			
Toluene	1.0	0.050	1.000	0	102	80	120			
Ethylbenzene	1.0	0.050	1.000	0	104	80	120			
Xylenes, Total	3.1	0.10	3.000	0	103	80	120			
Surr: 4-Bromofluorobenzene	1.2		1.000		116	80	120			

Qualifiers:

- | | |
|---|--|
| * Value exceeds Maximum Contaminant Level. | B Analyte detected in the associated Method Blank |
| E Value above quantitation range | H Holding times for preparation or analysis exceeded |
| J Analyte detected below quantitation limits | ND Not Detected at the Reporting Limit |
| O RSD is greater than RSDlimit | P Sample pH greater than 2. |
| R RPD outside accepted recovery limits | RL Reporting Detection Limit |
| S Spike Recovery outside accepted recovery limits | |



Hall Environmental Analysis Laboratory
4901 Hawkins NE
Albuquerque, NM 87105
TEL: 505-345-3975 FAX: 505-345-4107
Website: www.hallenvironmental.com

Sample Log-In Check List

Client Name: Southwest Geoscience

Work Order Number: 1404314

RcptNo: 1

Received by/date:		04/08/14
Logged By:	Lindsay Mangin	4/8/2014 10:00:00 AM
Completed By:	Lindsay Mangin	4/8/2014 10:26:28 AM
Reviewed By:		04/08/14

Chain of Custody

1. Custody seals intact on sample bottles? Yes ☐ No ☐ Not Present ☒
2. Is Chain of Custody complete? Yes ☒ No ☐ Not Present ☐
3. How was the sample delivered? Courier

Log In

4. Was an attempt made to cool the samples? Yes ☒ No ☐ NA ☐
5. Were all samples received at a temperature of $>0^{\circ}\text{C}$ to 6.0°C ? Yes ☒ No ☐ NA ☐
6. Sample(s) in proper container(s)? Yes ☒ No ☐
7. Sufficient sample volume for indicated test(s)? Yes ☒ No ☐
8. Are samples (except VOA and ONG) properly preserved? Yes ☒ No ☐
9. Was preservative added to bottles? Yes ☐ No ☒ NA ☐
10. VOA vials have zero headspace? Yes ☐ No ☐ No VOA Vials ☒
11. Were any sample containers received broken? Yes ☐ No ☒
12. Does paperwork match bottle labels?
(Note discrepancies on chain of custody) Yes ☒ No ☐
13. Are matrices correctly identified on Chain of Custody? Yes ☒ No ☐
14. Is it clear what analyses were requested? Yes ☒ No ☐
15. Were all holding times able to be met?
(If no, notify customer for authorization.) Yes ☒ No ☐

of preserved
bottles checked
for pH: _____
(<2 or >12 unless noted)
Adjusted? _____
Checked by: _____

Special Handling (if applicable)

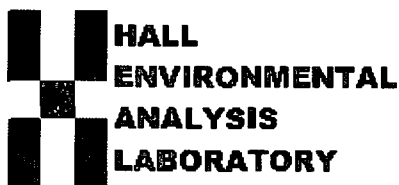
16. Was client notified of all discrepancies with this order? Yes ☐ No ☐ NA ☒

Person Notified:	_____	Date:	_____
By Whom:	_____	Via:	<input type="checkbox"/> eMail <input type="checkbox"/> Phone <input type="checkbox"/> Fax <input type="checkbox"/> In Person
Regarding:	_____		
Client Instructions:	_____		

17. Additional remarks:

18. Cooler Information

Cooler No	Temp °C	Condition	Seal Intact	Seal No	Seal Date	Signed By
1	2.9	Good	Yes			



*Hall Environmental Analysis Laboratory
4901 Hawkins NE
Albuquerque, NM 87109
TEL: 505-345-3975 FAX: 505-345-4107
Website: www.hallenvironmental.com*

May 02, 2014

Kyle Summers
Southwest Geoscience
606 S. Rio Grande Unit A
Aztec, NM 87410
TEL: (903) 821-5603
FAX (214) 350-2914

RE: Cohn #1

OrderNo.: 1404C00

Dear Kyle Summers:

Hall Environmental Analysis Laboratory received 1 sample(s) on 4/30/2014 for the analyses presented in the following report.

These were analyzed according to EPA procedures or equivalent. To access our accredited tests please go to www.hallenvironmental.com or the state specific web sites. In order to properly interpret your results it is imperative that you review this report in its entirety. See the sample checklist and/or the Chain of Custody for information regarding the sample receipt temperature and preservation. Data qualifiers or a narrative will be provided if the sample analysis or analytical quality control parameters require a flag. When necessary, data qualifiers are provided on both the sample analysis report and the QC summary report, both sections should be reviewed. All samples are reported, as received, unless otherwise indicated. Lab measurement of analytes considered field parameters that require analysis within 15 minutes of sampling such as pH and residual chlorine are qualified as being analyzed outside of the recommended holding time.

Please don't hesitate to contact HEAL for any additional information or clarifications.

ADHS Cert #AZ0682 -- NMED-DWB Cert #NM9425 -- NMED-Micro Cert #NM0190

Sincerely,

Andy Freeman
Laboratory Manager
4901 Hawkins NE
Albuquerque, NM 87109

Hall Environmental Analysis Laboratory, Inc.

Analytical Report

Lab Order 1404C00

Date Reported: 5/2/2014

CLIENT: Southwest Geoscience

Client Sample ID: WS-1

Project: Cohn #1

Collection Date: 4/29/2014 8:30:00 AM

Lab ID: 1404C00-001

Matrix: AQUEOUS

Received Date: 4/30/2014 10:05:00 AM

Analyses	Result	RL	Qual	Units	DF	Date Analyzed	Batch
EPA METHOD 8015D: DIESEL RANGE							Analyst: BCN
Diesel Range Organics (DRO)	5.2	1.0		mg/L	1	4/30/2014 2:56:53 PM	12941
Surr: DNOP	127	62.7-145		%REC	1	4/30/2014 2:56:53 PM	12941
EPA METHOD 8015D: GASOLINE RANGE							Analyst: NSB
Gasoline Range Organics (GRO)	5.2	0.25		mg/L	5	4/30/2014 11:41:07 AM	R18301
Surr: BFB	101	80.4-118		%REC	5	4/30/2014 11:41:07 AM	R18301
EPA METHOD 8021B: VOLATILES							Analyst: NSB
Benzene	780	20		µg/L	20	4/30/2014 12:36:23 PM	R18301
Toluene	750	20		µg/L	20	4/30/2014 12:36:23 PM	R18301
Ethylbenzene	60	5.0		µg/L	5	4/30/2014 11:41:07 AM	R18301
Xylenes, Total	730	10		µg/L	5	4/30/2014 11:41:07 AM	R18301
Surr: 4-Bromofluorobenzene	115	82.9-139		%REC	5	4/30/2014 11:41:07 AM	R18301

Refer to the QC Summary report and sample login checklist for flagged QC data and preservation information.

Qualifiers:	*	Value exceeds Maximum Contaminant Level.	B	Analyte detected in the associated Method Blank	Page 1 of 4
	E	Value above quantitation range	H	Holding times for preparation or analysis exceeded	
	J	Analyte detected below quantitation limits	ND	Not Detected at the Reporting Limit	
	O	RSD is greater than RSDlimit	P	Sample pH greater than 2.	
	R	RPD outside accepted recovery limits	RL	Reporting Detection Limit	
	S	Spike Recovery outside accepted recovery limits			

QC SUMMARY REPORT

Hall Environmental Analysis Laboratory, Inc.

WO#: 1404C00

02-May-14

Client: Southwest Geoscience

Project: Cohn #1

Sample ID	MB-12941	SampType:	MBLK	TestCode:	EPA Method 8015D: Diesel Range					
Client ID:	PBW	Batch ID:	12941	RunNo:	18255					
Prep Date:	4/30/2014	Analysis Date:	4/30/2014	SeqNo:	528470	Units:	mg/L			
Analyte	Result	PQL	SPK value	SPK Ref Val	%REC	LowLimit	HighLimit	%RPD	RPDLimit	Qual

Diesel Range Organics (DRO)

ND

1.0

Surr: DNOP

1.4

1.000

139

62.7

145

Sample ID	LCS-12941	SampType:	LCS	TestCode:	EPA Method 8015D: Diesel Range					
Client ID:	LCSW	Batch ID:	12941	RunNo:	18255					
Prep Date:	4/30/2014	Analysis Date:	4/30/2014	SeqNo:	528471	Units:	mg/L			
Analyte	Result	PQL	SPK value	SPK Ref Val	%REC	LowLimit	HighLimit	%RPD	RPDLimit	Qual

Diesel Range Organics (DRO)

5.7

1.0

5.000

0

115

78.6

146

Surr: DNOP

0.61

0.5000

122

62.7

145

Sample ID	LCSD-12941	SampType:	LCSD	TestCode:	EPA Method 8015D: Diesel Range					
Client ID:	LCSS02	Batch ID:	12941	RunNo:	18255					
Prep Date:	4/30/2014	Analysis Date:	4/30/2014	SeqNo:	528472	Units:	mg/L			
Analyte	Result	PQL	SPK value	SPK Ref Val	%REC	LowLimit	HighLimit	%RPD	RPDLimit	Qual

Diesel Range Organics (DRO)

6.0

1.0

5.000

0

119

78.6

146

3.88

26.5

Surr: DNOP

0.58

0.5000

115

62.7

145

0

0

Qualifiers:

- * Value exceeds Maximum Contaminant Level.
- E Value above quantitation range
- J Analyte detected below quantitation limits
- O RSD is greater than RSDlimit
- R RPD outside accepted recovery limits
- S Spike Recovery outside accepted recovery limits

- B Analyte detected in the associated Method Blank
- H Holding times for preparation or analysis exceeded
- ND Not Detected at the Reporting Limit
- P Sample pH greater than 2.
- RL Reporting Detection Limit

QC SUMMARY REPORT

Hall Environmental Analysis Laboratory, Inc.

WO#: 1404C00

02-May-14

Client: Southwest Geoscience

Project: Cohn #1

Sample ID: 5ML RB	SampType: MBLK	TestCode: EPA Method 8015D: Gasoline Range								
Client ID: PBW	Batch ID: R18301	RunNo: 18301								
Prep Date:	Analysis Date: 4/30/2014	SeqNo: 529304	Units: mg/L							
Analyte	Result	PQL	SPK value	SPK Ref Val	%REC	LowLimit	HighLimit	%RPD	RPDLimit	Qual
Gasoline Range Organics (GRO)	ND	0.050								
Surr: BFB	18		20.00		88.0	80.4	118			

Sample ID: 2.5UG GRO LCS	SampType: LCS	TestCode: EPA Method 8015D: Gasoline Range								
Client ID: LCSW	Batch ID: R18301	RunNo: 18301								
Prep Date:	Analysis Date: 4/30/2014	SeqNo: 529305	Units: mg/L							
Analyte	Result	PQL	SPK value	SPK Ref Val	%REC	LowLimit	HighLimit	%RPD	RPDLimit	Qual
Gasoline Range Organics (GRO)	0.54	0.050	0.5000	0	109	80	120			
Surr: BFB	19		20.00		95.8	80.4	118			

Qualifiers:

- | | |
|---|--|
| * Value exceeds Maximum Contaminant Level. | B Analyte detected in the associated Method Blank |
| E Value above quantitation range | H Holding times for preparation or analysis exceeded |
| J Analyte detected below quantitation limits | ND Not Detected at the Reporting Limit |
| O RSD is greater than RSDlimit | P Sample pH greater than 2. |
| R RPD outside accepted recovery limits | RL Reporting Detection Limit |
| S Spike Recovery outside accepted recovery limits | |

QC SUMMARY REPORT

Hall Environmental Analysis Laboratory, Inc.

WO#: 1404C00

02-May-14

Client: Southwest Geoscience

Project: Cohn #1

Sample ID	5ML RB	SampType:	MBLK	TestCode:	EPA Method 8021B: Volatiles					
Client ID:	PBW	Batch ID:	R18301	RunNo:	18301					
Prep Date:		Analysis Date:	4/30/2014	SeqNo:	529327	Units:	µg/L			
Analyte	Result	PQL	SPK value	SPK Ref Val	%REC	LowLimit	HighLimit	%RPD	RPDLimit	Qual
Benzene	ND	1.0								
Toluene	ND	1.0								
Ethylbenzene	ND	1.0								
Xylenes, Total	ND	2.0								
Surr: 4-Bromofluorobenzene	20		20.00		98.5	82.9	139			

Sample ID	100NG BTEX LCS	SampType:	LCS	TestCode:	EPA Method 8021B: Volatiles					
Client ID:	LCSW	Batch ID:	R18301	RunNo:	18301					
Prep Date:		Analysis Date:	4/30/2014	SeqNo:	529328	Units:	µg/L			
Analyte	Result	PQL	SPK value	SPK Ref Val	%REC	LowLimit	HighLimit	%RPD	RPDLimit	Qual
Benzene	21	1.0	20.00	0	103	80	120			
Toluene	20	1.0	20.00	0	103	80	120			
Ethylbenzene	20	1.0	20.00	0	101	80	120			
Xylenes, Total	64	2.0	60.00	0	107	80	120			
Surr: 4-Bromofluorobenzene	21		20.00		103	82.9	139			

Qualifiers:

- | | |
|---|--|
| * Value exceeds Maximum Contaminant Level. | B Analyte detected in the associated Method Blank |
| E Value above quantitation range | H Holding times for preparation or analysis exceeded |
| J Analyte detected below quantitation limits | ND Not Detected at the Reporting Limit |
| O RSD is greater than RSDlimit | P Sample pH greater than 2. |
| R RPD outside accepted recovery limits | RL Reporting Detection Limit |
| S Spike Recovery outside accepted recovery limits | |

Sample Log-In Check List

Client Name: Southwest Geoscience

Work Order Number: 1404C00

RcptNo: 1

Received by/date:

Logged By: Ashley Gallegos

4/30/2014 10:05:00 AM

Completed By: Ashley Gallegos

4/30/2014 10:55:56 AM

Reviewed By:

CS

04/30/14

Chain of Custody

1. Custody seals intact on sample bottles? Yes ☐ No ☐ Not Present ☒
2. Is Chain of Custody complete? Yes ☒ No ☐ Not Present ☐
3. How was the sample delivered? Courier

Log In

4. Was an attempt made to cool the samples? Yes ☒ No ☐ NA ☐
5. Were all samples received at a temperature of $>0^{\circ}\text{C}$ to 6.0°C ? Yes ☒ No ☐ NA ☐
6. Sample(s) in proper container(s)? Yes ☒ No ☐
7. Sufficient sample volume for indicated test(s)? Yes ☒ No ☐
8. Are samples (except VOA and ONG) properly preserved? Yes ☒ No ☐
9. Was preservative added to bottles? Yes ☐ No ☒ NA ☐
10. VOA vials have zero headspace? Yes ☒ No ☐ No VOA Vials ☐
11. Were any sample containers received broken? Yes ☐ No ☒
12. Does paperwork match bottle labels?
(Note discrepancies on chain of custody) Yes ☒ No ☐
13. Are matrices correctly identified on Chain of Custody? Yes ☒ No ☐
14. Is it clear what analyses were requested? Yes ☒ No ☐
15. Were all holding times able to be met?
(If no, notify customer for authorization.) Yes ☒ No ☐
- # of preserved bottles checked for pH:
(<2 or >12 unless noted)
Adjusted?
Checked by:

Special Handling (if applicable)

16. Was client notified of all discrepancies with this order? Yes ☐ No ☐ NA ☒

Person Notified:

Date:

By Whom:

Via:

eMail

Phone

Fax

In Person

Regarding:

Client Instructions:

17. Additional remarks:

18. Cooler Information

Cooler No	Temp. $^{\circ}\text{C}$	Condition	Seal Intact	Seal No	Seal Date	Signed By
1	1.0	Good	Yes			

<h1 style="margin: 0;">Southwest</h1> <h2 style="margin: 0;">GEOSCIENCE</h2> <p style="margin: 0;">Environmental & Hydrogeologic Consultants</p>				Laboratory: <u>HALL</u>				ANALYSIS REQUESTED				Lab use only Due Date:			
				Address: <u>ABQ</u>								Temp. of coolers when received (C°): <u>1.0</u>			
Office Location: <u>AZTEC, NM</u>				Contact: <u>FREEMAN</u>				<div style="transform: rotate(-45deg); transform-origin: center;"> Box 8021 TPH 8015 DEPT. 600 </div>				1 2 3 4 5			
Project Manager: <u>Kyle Summers</u>				PO/SO #: <u>04136018</u>								Page <u>1</u> of <u>1</u>			
Sampler's Name: <u>AARON BRYANT</u> <u>Kyle Summers</u>				Sampler's Signature: <u>[Signature]</u>				<div style="border: 1px solid black; padding: 5px;"> Lab Sample ID (Lab Use Only) </div>							
Proj. No.: <u>04136018</u>		Project Name: <u>COHN #1</u>		No/Type of Containers											
Matrix	Date	Time	Coed	Grab	Identifying Marks of Sample(s)	Start Depth	End Depth	VOA	A/G 1L	250 ml	P/O	<div style="border: 1px solid black; padding: 5px;"> 1404200-001 </div>			
W	4-29-14	0830		X	WS-1			5							
<div style="position: relative; width: 100%; height: 100%;"> <div style="position: absolute; top: 0; left: 0; right: 0; bottom: 0; border: 1px solid black; transform: rotate(-45deg); transform-origin: center;"> NFS IAS </div> </div>															
Turn around time <input type="checkbox"/> Normal <input type="checkbox"/> 25% Rush <input type="checkbox"/> 50% Rush <input checked="" type="checkbox"/> 100% Rush															
Relinquished by (Signature): <u>[Signature]</u>			Date: <u>4/29/14</u> Time: <u>1257</u>		Received by (Signature): <u>[Signature]</u>			Date: <u>4/29/14</u> Time: <u>1257</u>		NOTES:					
Relinquished by (Signature): <u>[Signature]</u>			Date: <u>4/29/14</u> Time: <u>1746</u>		Received by (Signature): <u>[Signature]</u>			Date: <u>04/30/14</u> Time: <u>1005</u>							
Relinquished by (Signature):			Date: Time:		Received by (Signature):			Date: Time:							
Relinquished by (Signature):			Date: Time:		Received by (Signature):			Date: Time:							

Matrix	WW - Wastewater	W - Water	S - Soil	SD - Solid	L - Liquid	A - Air Bag	C - Charcoal tube	SL - sludge	O - Oil
Container	VOA - 40 ml vial	A/G - Amber / Or Glass	1 Liter		250 ml - Glass wide mouth		P/O - Plastic or other		