

Basin Environmental Service Technologies, LLC

3100 Plains Highway
P. O. Box 301
Lovington, New Mexico 88260

jwlowry@basinenv.com

Office: (575) 396-2378

Fax: (575) 396-1429

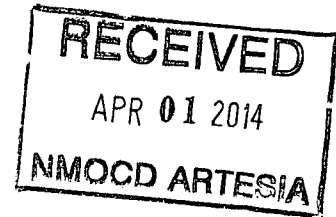


REMEDIATION SUMMARY AND SITE CLOSURE REQUEST

BOPCO, LP
POKER LAKE UNIT #190 FLOW LINE
Eddy County, New Mexico
Unit Letter "L" (NW/SW), Section 8, Township 24 South, Range 30 East
Latitude 32.230027° North, Longitude 103.911112° West
NMOCD Reference #2RP-1176

Prepared For:

BOPCO, LP
522 W. Mermod, Suite 704
Carlsbad, New Mexico 88220



Prepared By:

Basin Environmental Service Technologies, LLC
3100 Plains Highway
Lovington, New Mexico 88260

March 2014

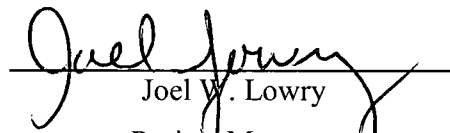

Joel W. Lowry
Project Manager

TABLE OF CONTENTS

1.0 INTRODUCTION AND BACKGROUND INFORMATION.....	1
2.0 NMOCD SITE CLASSIFICATION.....	1
3.0 SUMMARY OF SOIL REMEDIATION ACTIVITIES.....	2
4.0 QA/QC PROCEDURES.....	3
4.1 Soil Sampling.....	3
4.2 Decontamination of Equipment.....	3
4.3 Laboratory Protocol.....	3
5.0 SITE CLOSURE REQUEST.....	3
6.0 LIMITATIONS.....	4
7.0 DISTRIBUTION.....	5

FIGURES

Figure 1 – Site Location Map

Figure 2 – Site & Sample Location Map

TABLES

Table 1 – Concentrations of Benzene, BTEX, TPH & Chloride in Soil

APPENDICES

Appendix A – Release Notification and Corrective Action (Form C-141)

Appendix B – Photographs

Appendix C – Laboratory Analytical Reports

1.0 INTRODUCTION & BACKGROUND INFORMATION

Basin Environmental Service Technologies, LLC (Basin), on behalf of BOPCO, LP (BOPCO), has prepared this *Remediation Summary & Site Closure Request* for the release site known as Poker Lake Unit (PLU) #190 Flow Line. The legal description of the release site is Unit Letter "L" (NW/SW), Section 8, Township 24 South, Range 30 East, in Eddy County, New Mexico. The geographic coordinates of the release site are 32.230027° North latitude and 103.911112° West longitude. The property affected by the release is owned by the United States Department of the Interior - Bureau of Land Management (BLM). A "Site Location Map" is provided as Figure 1.

On May 21, 2012, BOPCO discovered a release had occurred on the PLU #190 flow line south of the PLU #192 Well Pad. The release was attributed to external corrosion. The "Release Notification and Corrective Action" (Form C-141) indicated approximately five barrels (5 bbls) of produced water and two barrels (2 bbls) of crude oil were released, affecting approximately one hundred square feet (100 ft²) of caliche road and two hundred square feet (200 ft²) of pasture land. During initial response activities a temporary pipeline clamp was installed. The affected section of pipeline has since been replaced. The Form C-141 is provided as Appendix A. General photographs of the release site are provided as Appendix B.

2.0 NMOCD SITE CLASSIFICATION

A search of the New Mexico Water Rights Reporting System (NMWRRS) database maintained by the New Mexico Office of the State Engineer (NMOSE) indicated the average depth to groundwater for Section 8, Township 24 South, Range 30 East is approximately 183'. Based on the NMOCD ranking system, zero (0) points will be assigned to the site as a result of this criterion.

A search of the NMWRRS database indicated there are no water wells within 1,000 feet of the release. Based on the NMOCD ranking system, zero (0) points will be assigned to the site as a result of this criterion.

There are no surface water bodies within 1,000 feet of the release. Based on the NMOCD ranking system, zero (0) points will be assigned to the site as a result of this criterion.

NMOCD guidelines indicate the PLU #190 Flow Line release site has an initial ranking score of zero (0) points. The soil remediation levels for a site with a ranking score of zero (0) points are as follows:

- Benzene – 10 mg/Kg (ppm)
- BTEX – 50 mg/Kg (ppm)
- TPH – 5,000 mg/Kg (ppm)

The New Mexico Administrative Code (NMAC) does not currently specify a remediation level for chloride concentrations in soil. Chloride remediation levels are set by the NMOCD on a site-specific basis.

3.0 SUMMARY OF SOIL REMEDIATION ACTIVITIES

On February 10, 2014, Basin began excavating impacted soil at the release site. The floor and sidewalls of the excavation were advanced until field tests suggested concentrations of benzene, toluene, ethylbenzene and xylene (BTEX), total petroleum hydrocarbons (TPH) and chloride were less than NMOCD Regulatory Standards. Excavated material was stockpiled on-site, pending final disposition.

On February 13, 2014, four (4) confirmation soil samples (NSW #1, ESW #1, SSW #1 and Floor #1 @ 2') were collected from the floor and sidewalls of the excavation and submitted to the laboratory for analysis of chloride concentrations. Laboratory analytical results indicated chloride concentrations ranged from 576 ppm for soil sample ESW #1 to 80.0 ppm for soil sample SSW #1. Soil sample Floor #1 @ 2' was also analyzed for concentrations of TPH and BTEX, which were determined to be less than the appropriate laboratory method detection limit (MDL). Chloride, TPH and BTEX concentrations were below NMOCD Regulatory Standards in each of the submitted soil samples. A summary of "Concentrations of Benzene, BTEX, TPH and Chloride in Soil" is provided in Table 1. A "Site and Sample Location Map" is provided as Figure 2. Laboratory analytical reports are provided as Appendix C.

On February 14, 2014, one (1) soil sample (WSW #1) was collected from the west sidewall of the excavation, adjacent to Gavalin Road. Soil sample WSW #1 was submitted to the laboratory for analysis of chloride concentrations, which were determined to be 1,960 ppm. Further excavation to the west posed a safety risk due to the presence of a heavily used oilfield access road.

Approximately one hundred and forty cubic yards (140 yd³) of impacted material was excavated from the release site and transported to Lea Land, LLC (NMOCD Permit #WM-01-035) for disposal.

The final dimensions of the excavation were approximately thirty-five feet (35') in width, forty feet (40') in length and eighteen inches (18") to two feet (2') in depth.

On February 17, 2014, upon receiving laboratory analytical data from confirmation soil samples, Basin began backfilling the excavation with locally purchased, non-impacted material. Following backfilling, areas affected by the remediation activities were contoured to fit the surrounding topography.

4.0 QA/QC PROCEDURES

4.1 Soil Sampling

Soil samples were delivered to Cardinal Laboratories, Inc., in Hobbs, New Mexico, for BTEX, TPH and/or chloride analyses using the methods described below:

- BTEX concentrations in accordance with EPA Method SW-846 8021b
- TPH concentrations in accordance with EPA Method SW-846 8015M
- Chloride concentrations in accordance with EPA Method 4500 Cl-B

4.2 Decontamination of Equipment

Cleaning of the sampling equipment was the responsibility of the environmental technician. Prior to use, and between each sample, the sampling equipment was cleaned with Liqui-Nox® detergent and rinsed with distilled water.

4.3 Laboratory Protocol

The laboratory was responsible for proper QA/QC procedures after signing the chain-of-custody form(s). These procedures were either transmitted with the laboratory reports or are on file at the laboratory.

5.0 SITE CLOSURE REQUEST

Soil samples collected from the floor and sidewalls of the PLU #190 Flow Line excavation were analyzed by an NMOCD-approved laboratory. Laboratory analytical results indicated concentrations of BTEX, TPH and chloride were below NMOCD Regulatory Standards in each of the submitted soil samples with the exception of soil sample WSW #1, which had a chloride concentration of 1,960 ppm. Further excavation to the west was limited due to the presence of a widely used oil field access road. Based on these laboratory analytical results, Basin recommends BOPCO provide the NMOCD Artesia District Office and BML a copy of this *Remediation Summary and Site Closure Request* and request the NMOCD grant closure to the PLU #190 Flow Line release site.

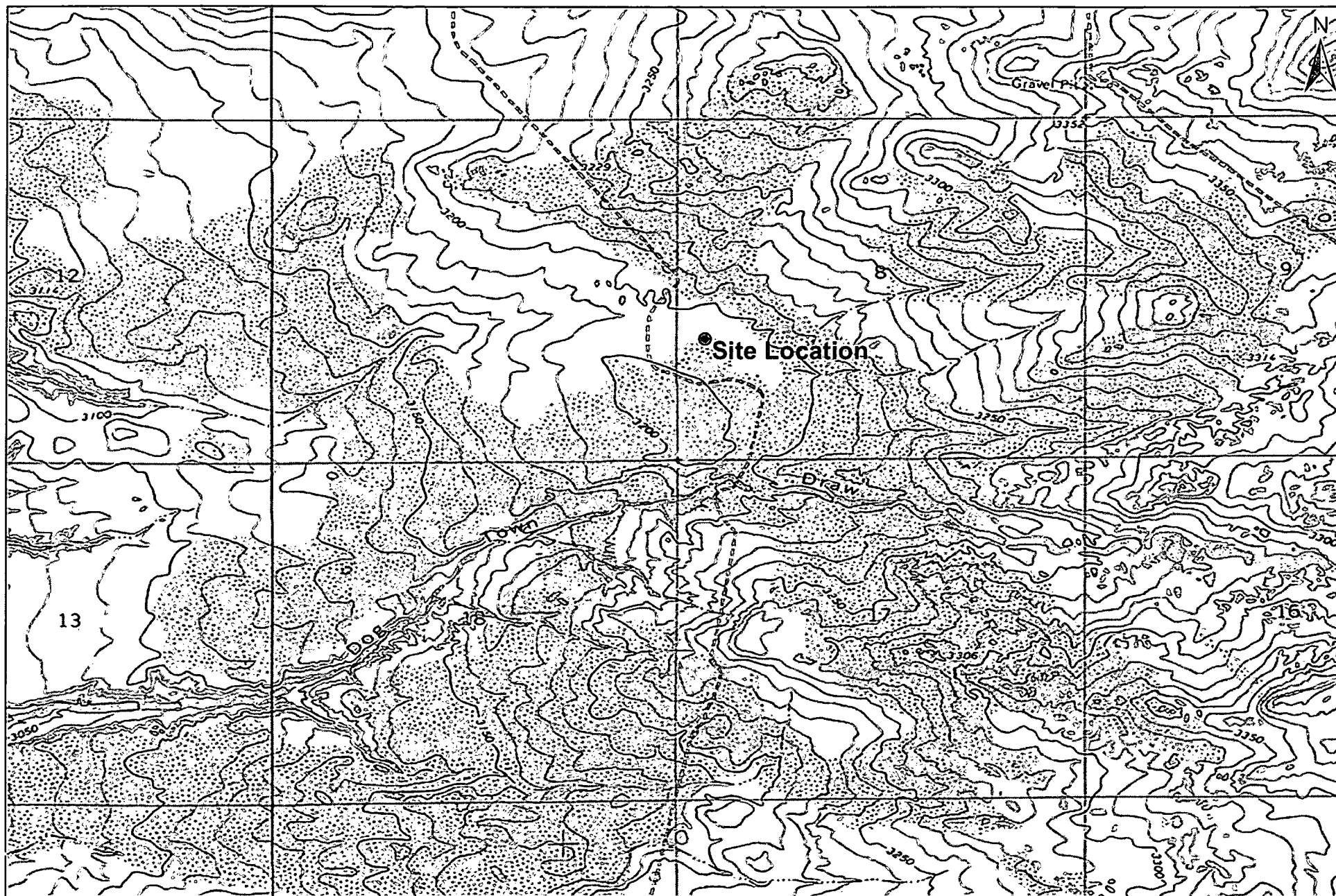
6.0 LIMITATIONS

Basin Environmental Service Technologies, LLC, has prepared this *Remediation Summary and Site Closure Request* to the best of its ability. No other warranty, expressed or implied, is made or intended. Basin has examined and relied upon documents referenced in the report and on oral statements made by certain individuals. Basin has not conducted an independent examination of the facts contained in referenced materials and statements. Basin has presumed the genuineness of these documents and statements and that the information provided therein is true and accurate. Basin has prepared this report in a professional manner, using the degree of skill and care exercised by similar environmental consultants. Basin notes that the facts and conditions referenced in this report may change over time, and the conclusions and recommendations set forth herein are applicable only to the facts and conditions as described at the time of this report.

This report has been prepared for the benefit of BOPCO, LP. The information contained in this report, including all exhibits and attachments, may not be used by any other party without the express consent of Basin Environmental Service Technologies, LLC, and/or BOPCO, LP.

7.0 DISTRIBUTION:

- Copy 1: Mike Bratcher
New Mexico Energy, Minerals and Natural Resources Department
Oil Conservation Division (District 2)
1301 E. Grand Avenue
Artesia, NM 88210
- Copy 2: James Amos
Bureau of Land Management
602 E. Greene Street
Carlsbad, New Mexico 88220
- Copy 3: Tony Savoie
BOPCO, LP
522 W. Mermod, Suite 704
Carlsbad, NM 88220
- Copy 4: Basin Environmental Service Technologies, LLC
P.O. Box 301
Lovington, NM 88260




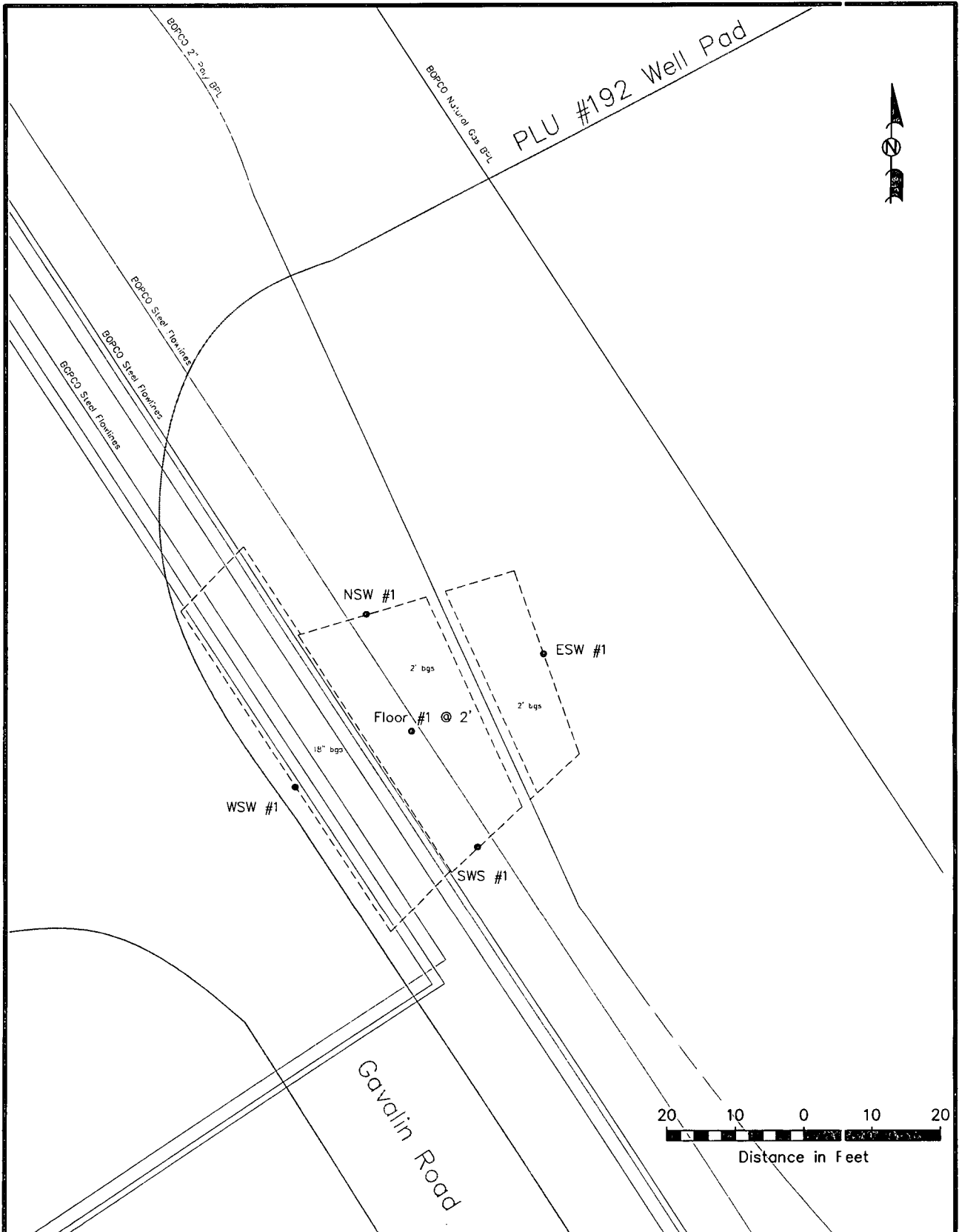
1,000 500 0 1,000 2,000

 Distance in Feet

Figure 2
Site Location Map
BOPCO, LP
Poker Lake Unit #190 Flow Line
Eddy County, New Mexico



Basin Environmental Service Technologies, LLC
 3100 Plains Hwy.
 Lovington, NM 88260

Drawn By: BJA	Checked By: JWJ
March 14, 2014	Scale: 1" = 2,000'



LEGEND:

- | | |
|---------------------|--------|
| — Excavation Extent | — Road |
| — Pipeline | |
| ● Sample Location | |

Figure 2
Site & Sample Location Map
BOPCO, L.P.
PLU #190 Flowline
Eddy County, NM

Basin Environmental Services

Scale: 1" = 20'	Drawn By: JWL	Prepared By: BJA
February 18, 2014		

TABLE 1

CONCENTRATIONS OF BENZENE, BTEX, TPH & CHLORIDES IN SOIL

BOPCO, LP
 PLU #190 FLOW LINE
 EDDY COUNTY, NEW MEXICO

SAMPLE LOCATION	SAMPLE DEPTH (BGS)	SAMPLE DATE	SOIL STATUS	METHOD: EPA SW 846-8021B, 5030					METHOD: 8015M			TOTAL TPH C ₆ -C ₃₅ (mg/Kg)	4500 CI-B CHLORIDE (mg/Kg)
				BENZENE (mg/Kg)	TOLUENE (mg/Kg)	ETHYL- BENZENE (mg/Kg)	TOTAL XYLENES (mg/Kg)	TOTAL BTEX (mg/Kg)	GRO C ₆ -C ₁₂ (mg/Kg)	DRO C ₁₂ -C ₂₈ (mg/Kg)	ORO C ₂₈ -C ₃₅ (mg/Kg)		
NSW #1	1.5'	2/13/2014	In-Situ	-	-	-	-	-	-	-	-	-	160
ESW #1	1.5'	2/13/2014	In-Situ	-	-	-	-	-	-	-	-	-	576
SSW #1	1.5'	2/13/2014	In-Situ	-	-	-	-	-	-	-	-	-	80.0
Floor #1 @ 2'	2'	2/13/2014	In-Situ	<0.050	<0.050	<0.050	<0.150	<0.300	<10.0	<10.0	<10.0	<10.0	576
WSW #1	1.5'	2/14/2014	In-Situ	-	-	-	-	-	-	-	-	-	1,960
NMOCD Criteria				10				50				5,000	1,000

- = Not analyzed.

District I
1625 N. French Dr., Hobbs, NM 88240
District II
1301 W. Grand Avenue, Artesia, NM 88210
District III
1000 Rio Brazos Road, Aztec, NM 87410
District IV
1220 S. St. Francis Dr., Santa Fe, NM 87505

State of New Mexico
Energy Minerals and Natural Resources
Oil Conservation Division
1220 South St. Francis Dr.
Santa Fe, NM 87505

Form C-141
Revised October 10, 2003

Submit 2 Copies to appropriate
District Office in accordance
with Rule 116 on back
side of form

Release Notification and Corrective Action

Incident nMLB 1217232193

OPERATOR

☒ Initial Report ☐ Final Report

Name of Company BOPCO, L.P. 0674260737	Contact Tony Savoie
Address 522 W. Mermod, Suite 704 Carlsbad, N.M. 88220	Telephone No. 432-556-8730
Facility Name Poker Lake Unit Well #190	Facility Type E&P

Surface Owner Federal	Mineral Owner Federal	Lease No.
-----------------------	-----------------------	-----------

LOCATION OF RELEASE

API 30-015-32142

Unit Letter L	Section 8	Township 238 243	Range 30E	Feet from the	North/South Line	Feet from the	East/West Line	Courty Eddy
------------------	--------------	------------------------	--------------	---------------	------------------	---------------	----------------	----------------

Latitude N 32.230027 Longitude W 103.911112

NATURE OF RELEASE

Type of Release: Produced water and crude oil	Volume of Release: 5 Bbls of Produced water and 2 Bbls crude oil	Volume Recovered: None
Source of Release: 2 7/8" flow line	Date and Hour of Occurrence 5/21/12 Time unknown	Date and Hour of Discovery 5/21/12 8:00 a.m.
Was Immediate Notice Given? <input type="checkbox"/> Yes <input type="checkbox"/> No <input checked="" type="checkbox"/> Not Required	If YES, To Whom?	
By Whom?	Date and Hour	
Was a Watercourse Reached? <input type="checkbox"/> Yes <input checked="" type="checkbox"/> No	If YES, Volume Impacting the Watercourse.	

If a Watercourse was Impacted, Describe Fully.*

Describe Cause of Problem and Remedial Action Taken.* The flow line developed a leak due to external corrosion. A temporary repair clamp was placed on the pipe until the well could be shut in. Two joints of pipe were replaced the same day as discovery.

Describe Area Affected and Cleanup Action Taken.* Approximately 100 sq.ft. of caliche road and approximately 200 sq. ft. of pasture land. All of the released fluid soaked into the ground. There have been previous spills in the area due to corrosion on the flow lines. The remediation will comply with the NMOCD and BLM requirements for spills.

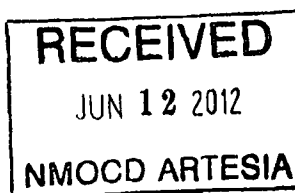
I hereby certify that the information given above is true and complete to the best of my knowledge and understand that pursuant to NMOCD rules and regulations all operators are required to report and/or file certain release notifications and perform corrective actions for releases which may endanger public health or the environment. The acceptance of a C-141 report by the NMOCD marked as "Final Report" does not relieve the operator of liability should their operations have failed to adequately investigate and remediate contamination that pose a threat to ground water, surface water, human health or the environment. In addition, NMOCD acceptance of a C-141 report does not relieve the operator of responsibility for compliance with any other federal, state, or local laws and/or regulations.

Signature: Tony Savoie	OIL CONSERVATION DIVISION	
Printed Name: Tony Savoie	Approved by District Signed By: M/Ly B...	
Title: Waste Mgmt. & Remediation Specialist	Approval Date: JUN 20 2012	Expiration Date:
E-mail Address: TASavoie@BassPet.com	Conditions of Approval:	Attached <input type="checkbox"/>
Date: 6/3/12	Phone: 432-556-8730	

* Attach Additional Sheets If Necessary

Remediation per OCD Rules &
Guidelines. **SUBMIT REMEDIATION
PROPOSAL NOT LATER THAN:**

7/20/2012



2RP1176

District I
1625 N. French Dr., Hobbs, NM 88240
District II
811 S. First St., Artesia, NM 88210
District III
1000 Rio Brazos Road, Aztec, NM 87410
District IV
1220 S. St. Francis Dr., Santa Fe, NM 87505

State of New Mexico
Energy Minerals and Natural Resources

Oil Conservation Division
1220 South St. Francis Dr.
Santa Fe, NM 87505

Form C-141
Revised August 8, 2011

Submit 1 Copy to appropriate District Office in
accordance with 19.15.29 NMAC.

Release Notification and Corrective Action

OPERATOR

☐ Initial Report ☒ Final Report

Name of Company: BOPCO, L.P.	Contact: Tony Savoie	
Address: 522 W. Mermod, Suite 704 Carlsbad, N.M. 88220	Telephone No. 575-887-7329	
Facility Name: Poker Lake Unit Well #190 (2RP-1176)	Facility Type: Exploration and Production	
Surface Owner: Federal	Mineral Owner: Federal	API No. 30-015-32142

LOCATION OF RELEASE

Unit Letter L	Section 8	Township 24S	Range 30E	Feet from the	North/South Line	Feet from the	East/West Line	County Eddy
------------------	--------------	-----------------	--------------	---------------	------------------	---------------	----------------	----------------

Latitude N 32.230027 Longitude W 103.911112

NATURE OF RELEASE

Type of Release: Produced water and crude oil	Volume of Release: 5 bbls of produced water and 2 bbls crude oil	Volume Recovered: None
Source of Release: 2 7/8" flow line	Date and Hour of Occurrence: 5/21/12 time unknown	Date and Hour of Discovery: 5/21/12 at 8:00 a.m.
Was Immediate Notice Given? <input type="checkbox"/> Yes <input type="checkbox"/> No <input checked="" type="checkbox"/> Not Required	If YES, To Whom?	
By Whom?	Date and Hour	
Was a Watercourse Reached? <input type="checkbox"/> Yes <input checked="" type="checkbox"/> No	If YES, Volume Impacting the Watercourse:	
If a Watercourse was Impacted, Describe Fully.*		

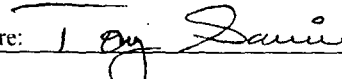
Describe Cause of Problem and Remedial Action Taken.* The flow line developed a leak due to external corrosion. A temporary repair clamp was placed on the pipe until the well could be shut in. Two joints of pipe were replaced the same day as discovery.

Describe Area Affected and Cleanup Action Taken.* Approximately 100 sq. ft. of caliche road and approximately 200 sq. ft. of pasture land. All of the released fluid soaked into the ground. There have been previous spills in the area due to corrosion on the flow lines. The remediation will comply with the NMOCD and BLM requirements for spills.

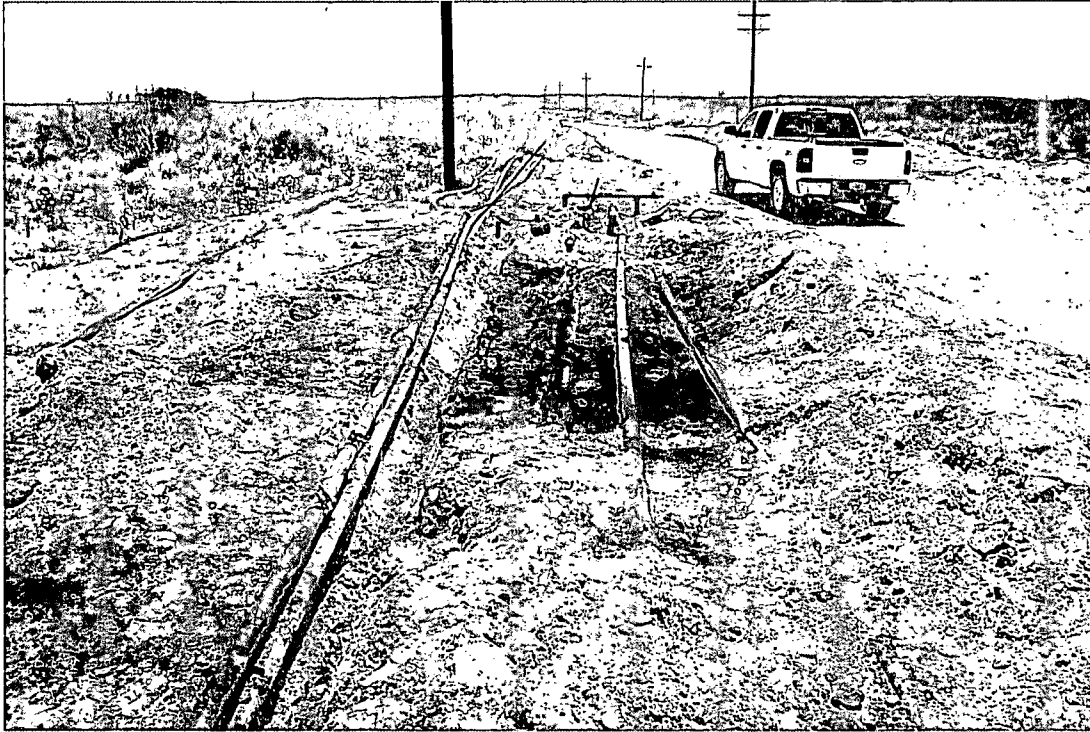
Confirmation soil samples collected from the floor and sidewalls of the PLU #190 excavation were analyzed by an NMOCD-approved laboratory, which determined concentrations of BTEX, TPH and Chloride were less than NMOCD Regulatory Standards in each of the submitted soil samples with the exception of soil sample WSW #1, which exhibited a chloride concentration of 1,960 ppm. Further excavation to the west was limited due to the presence of a widely used oil field access road. The final dimensions of the excavation were approximately 35' x 40' and 18" to 2' in depth. On February 14, 2014, approximately 140 cy of impacted soil was excavated and transported to an NMOCD-approved disposal facility. **Please reference the attached Basin Environmental Services Technologies Remediation Summary and Site Closure Request for details of remediation activities.**

I hereby certify that the information given above is true and complete to the best of my knowledge and understand that pursuant to NMOCD rules and regulations all operators are required to report and/or file certain release notifications and perform corrective actions for releases which may endanger public health or the environment. The acceptance of a C-141 report by the NMOCD marked as "Final Report" does not relieve the operator of liability should their operations have failed to adequately investigate and remediate contamination that pose a threat to ground water, surface water, human health or the environment. In addition, NMOCD acceptance of a C-141 report does not relieve the operator of responsibility for compliance with any other federal, state, or local laws and/or regulations.

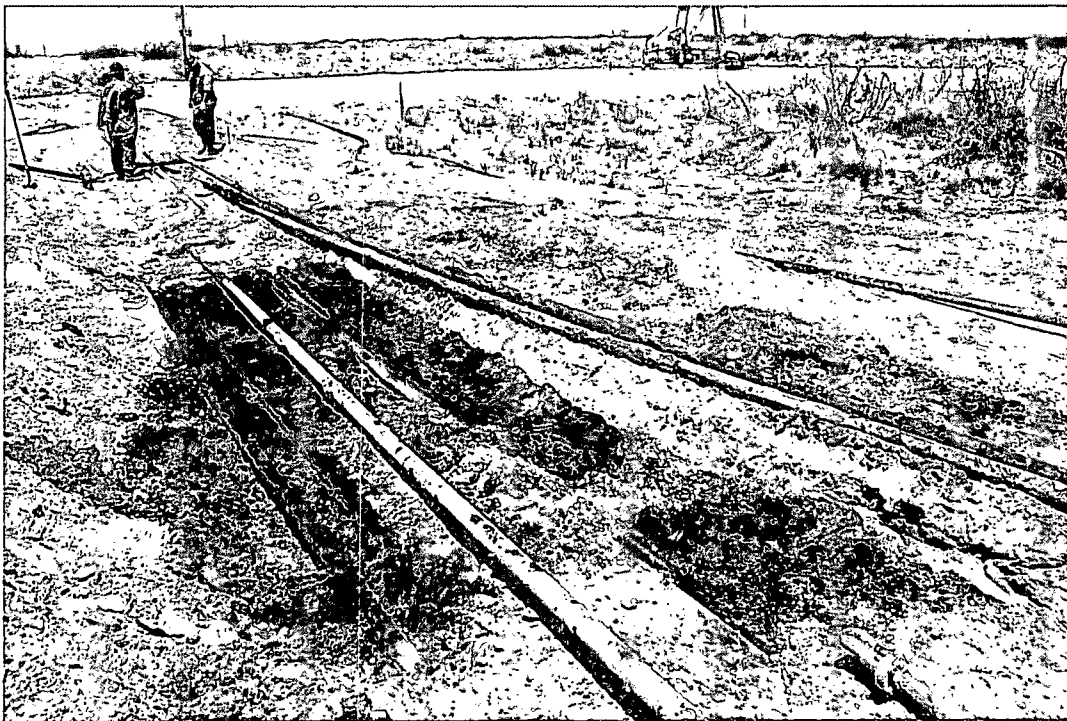
OIL CONSERVATION DIVISION

Signature: 	Approved by Environmental Specialist:		
Printed Name: Tony Savoie			
Title: Waste Management and Remediation Specialist	Approval Date:	Expiration Date:	
E-mail Address: tasavoie@basspet.com	Conditions of Approval:		Attached <input type="checkbox"/>
Date: <u>4/1/14</u>	Phone: 432-556-8730		

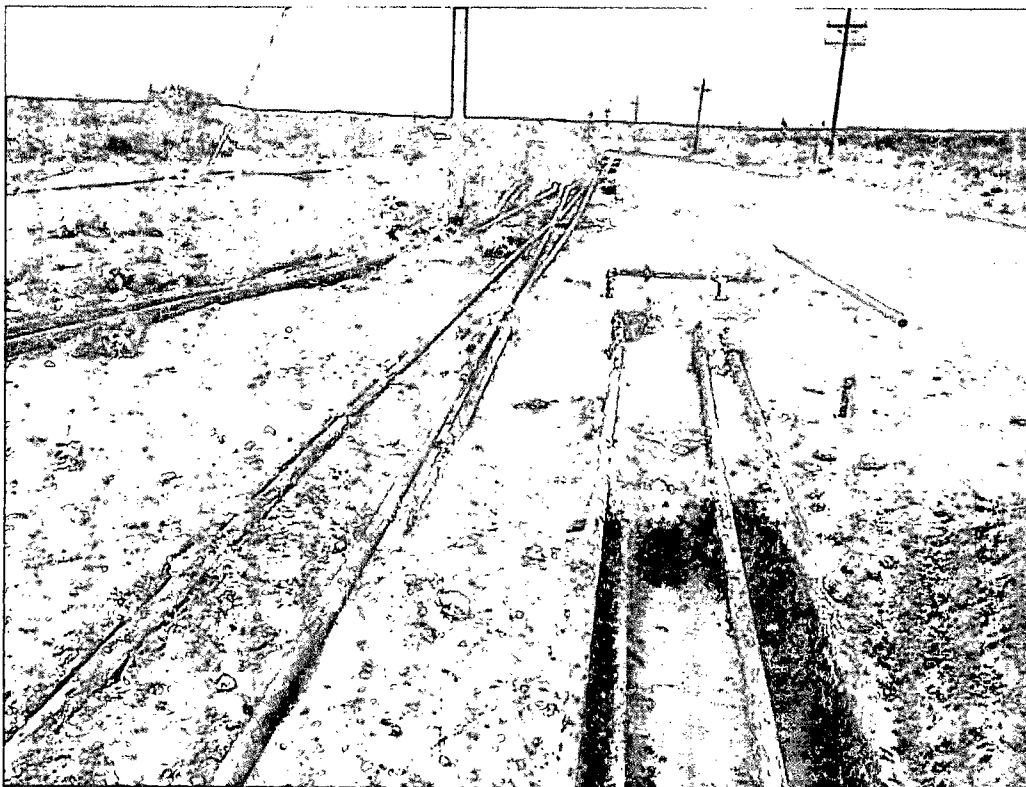
* Attach Additional Sheets If Necessary



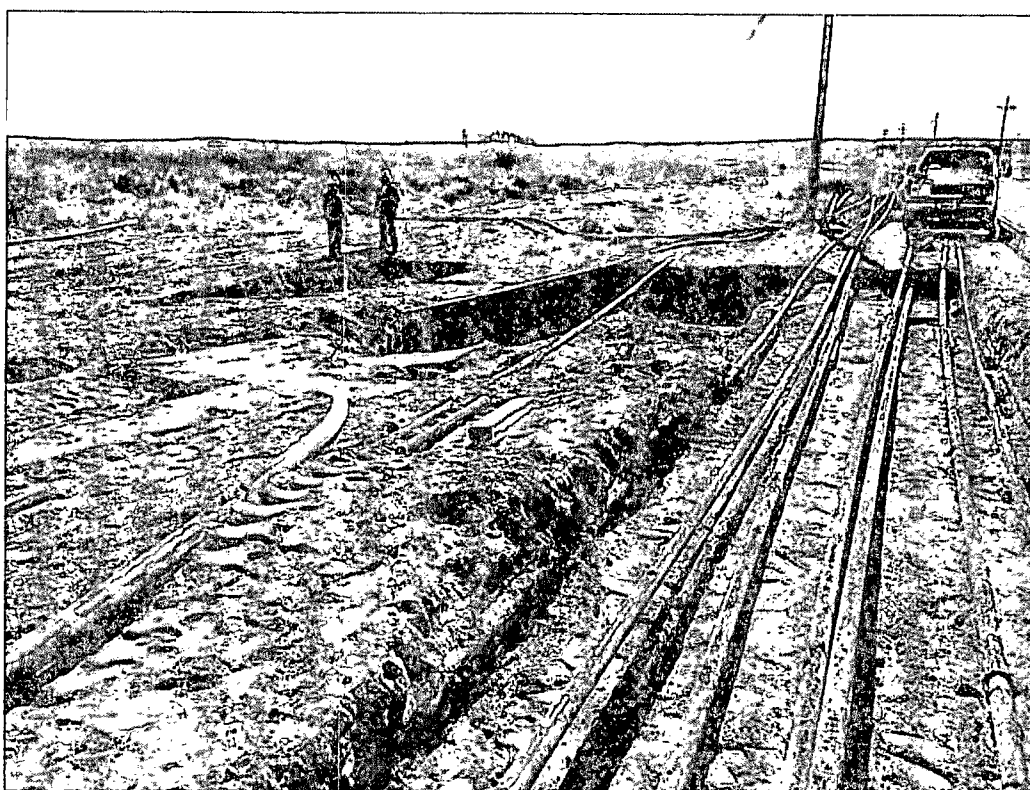
Photograph of the initial release at the PLU #190 Flow Line Release Site.



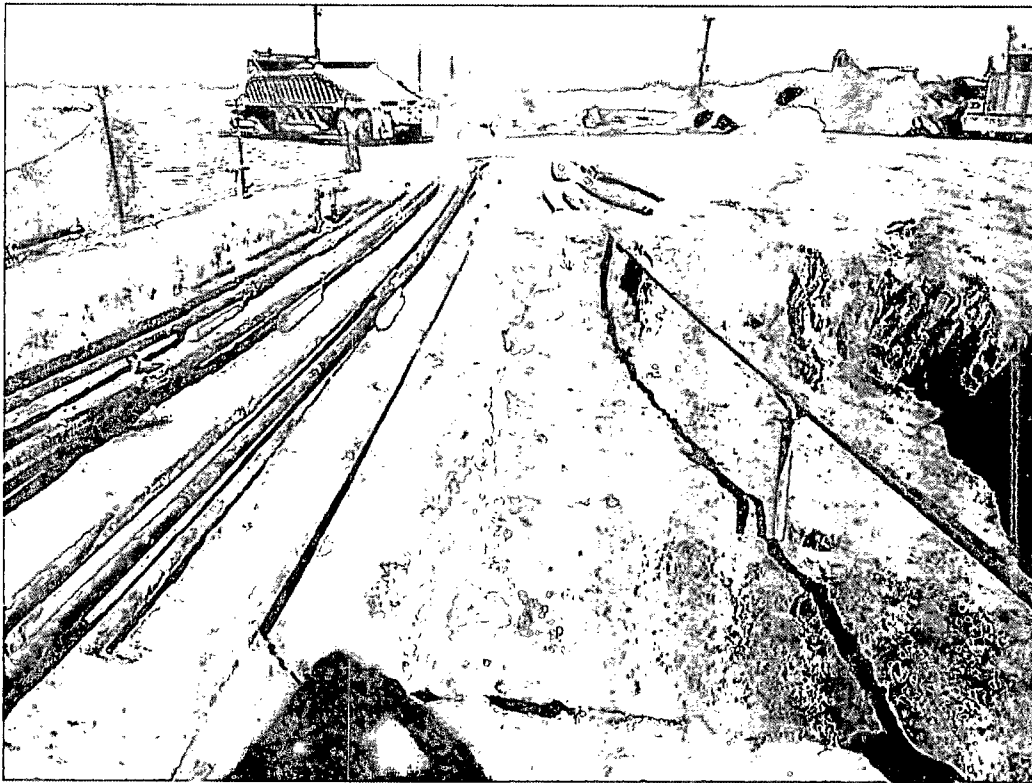
Photograph of the initial release at the PLU #190 Flow Line Release Site.



Photograph of excavation activities at the PLU #190 Flow Line Release Site.



Photograph of the excavated area at the PLU #190 Flow Line Release Site.



Photograph of the excavated area at the PLU #190 Flow Line Release Site.



Photograph of PLU #190 Flow Line Release after remediation activities.



Photograph of PLU #190 Flow Line Release after remediation activities.



Photograph of PLU #190 Flow Line Release after remediation activities.

February 21, 2014

JOEL LOWRY

Basin Environmental Service

P.O. Box 301

Lovington, NM 88260

RE: PLU #190

Enclosed are the results of analyses for samples received by the laboratory on 02/14/14 14:20.

Cardinal Laboratories is accredited through Texas NELAP under certificate number T104704398-13-5. Accreditation applies to drinking water, non-potable water and solid and chemical materials. All accredited analytes are denoted by an asterisk (*). For a complete list of accredited analytes and matrices visit the TCEQ website at www.tceq.texas.gov/field/qa/lab_accred_certif.html.

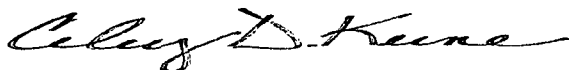
Cardinal Laboratories is accredited through the State of Colorado Department of Public Health and Environment for:

Method EPA 552.2	Haloacetic Acids (HAA-5)
Method EPA 524.2	Total Trihalomethanes (TTHM)
Method EPA 524.4	Regulated VOCs (V1, V2, V3)

Accreditation applies to public drinking water matrices.

This report meets NELAP requirements and is made up of a cover page, analytical results, and a copy of the original chain-of-custody. If you have any questions concerning this report, please feel free to contact me.

Sincerely,



Celey D. Keene

Lab Director/Quality Manager

Analytical Results For:

 Basin Environmental Service
 JOEL LOWRY
 P.O. Box 301
 Lovington NM, 88260
 Fax To: (575) 396-1429

 Received: 02/14/2014
 Reported: 02/21/2014
 Project Name: PLU #190
 Project Number: NONE GIVEN
 Project Location: EDDY COUNTY, NM

 Sampling Date: 02/13/2014
 Sampling Type: Soil
 Sampling Condition: Cool & Intact
 Sample Received By: Jodi Henson

Sample ID: NSW #1 (H400454-01)

Chloride, SM4500Cl-B		mg/kg		Analyzed By: HM						
Analyte	Result	Reporting Limit	Analyzed	Method Blank	BS	% Recovery	True Value QC	RPD	Qualifier	
Chloride	160	16.0	02/19/2014	ND	400	100	400	0.00		

Sample ID: ESW #1 (H400454-02)

Chloride, SM4500Cl-B		mg/kg		Analyzed By: HM						
Analyte	Result	Reporting Limit	Analyzed	Method Blank	BS	% Recovery	True Value QC	RPD	Qualifier	
Chloride	576	16.0	02/19/2014	ND	400	100	400	0.00		

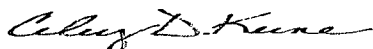
Sample ID: SSW #1 (H400454-03)

Chloride, SM4500Cl-B		mg/kg		Analyzed By: HM						
Analyte	Result	Reporting Limit	Analyzed	Method Blank	BS	% Recovery	True Value QC	RPD	Qualifier	
Chloride	80.0	16.0	02/19/2014	ND	400	100	400	0.00		

Cardinal Laboratories

*=Accredited Analyte

PLEASE NOTE: Liability and Damages. Cardinal's liability and client's exclusive remedy for any claim arising, whether based in contract or tort, shall be limited to the amount paid by client for analyses. All claims, including those for negligence and any other cause whatsoever shall be deemed waived unless made in writing and received by Cardinal within thirty (30) days after completion of the applicable service. In no event shall Cardinal be liable for incidental or consequential damages, including, without limitation, business interruptions, loss of use, or loss of profits incurred by client, its subsidiaries, affiliates or successors arising out of or related to the performance of the services hereunder by Cardinal, regardless of whether such claim is based upon any of the above stated reasons or otherwise. Results relate only to the samples identified above. This report shall not be reproduced except in full with written approval of Cardinal Laboratories.



Celey D. Keene, Lab Director/Quality Manager

Analytical Results For:

 Basin Environmental Service
 JOEL LOWRY
 P.O. Box 301
 Lovington NM, 88260
 Fax To: (575) 396-1429

 Received: 02/14/2014
 Reported: 02/21/2014
 Project Name: PLU #190
 Project Number: NONE GIVEN
 Project Location: EDDY COUNTY, NM

 Sampling Date: 02/13/2014
 Sampling Type: Soil
 Sampling Condition: Cool & Intact
 Sample Received By: Jodi Henson

Sample ID: FLOOR #1 @ 2' (H400454-04)

BTEX 8260B		mg/kg		Analyzed By: MS					
Analyte	Result	Reporting Limit	Analyzed	Method Blank	BS	% Recovery	True Value QC	RPD	Qualifier
Benzene*	<0.050	0.050	02/20/2014	ND	2.46	123	2.00	2.42	
Toluene*	<0.050	0.050	02/20/2014	ND	2.17	108	2.00	2.14	
Ethylbenzene*	<0.050	0.050	02/20/2014	ND	2.18	109	2.00	3.74	
Total Xylenes*	<0.150	0.150	02/20/2014	ND	6.35	106	6.00	3.42	
Total BTEX	<0.300	0.300	02/20/2014	ND					

Surrogate: Dibromofluoromethane 108 % 61.3-142

Surrogate: Toluene-d8 93.7 % 71.3-129

Surrogate: 4-Bromofluorobenzene 102 % 65.7-141

Chloride, SM4500CI-B		mg/kg		Analyzed By: HM					
Analyte	Result	Reporting Limit	Analyzed	Method Blank	BS	% Recovery	True Value QC	RPD	Qualifier
Chloride	576	16.0	02/19/2014	ND	400	100	400	0.00	

TPH 8015M		mg/kg		Analyzed By: ms					
Analyte	Result	Reporting Limit	Analyzed	Method Blank	BS	% Recovery	True Value QC	RPD	Qualifier
GRO C6-C10	<10.0	10.0	02/18/2014	ND	200	99.9	200	4.99	
DRO >C10-C28	<10.0	10.0	02/18/2014	ND	182	91.0	200	10.8	
EXT DRO >C28-C35	<10.0	10.0	02/18/2014	ND					

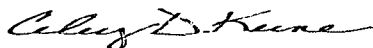
Surrogate: 1-Chlorooctane 113 % 65.2-140

Surrogate: 1-Chlorooctadecane 125 % 63.6-154

Cardinal Laboratories

*=Accredited Analyte

PLEASE NOTE: Liability and Damages. Cardinal's liability and client's exclusive remedy for any claim arising, whether based in contract or tort, shall be limited to the amount paid by client for analyses. All claims, including those for negligence and any other cause whatsoever shall be deemed waived unless made in writing and received by Cardinal within thirty (30) days after completion of the applicable service. In no event shall Cardinal be liable for incidental or consequential damages, including, without limitation, business interruptions, loss of use, or loss of profits incurred by client, its subsidiaries, affiliates or successors arising out of or related to the performance of the services hereunder by Cardinal, regardless of whether such claim is based upon any of the above stated reasons or otherwise. Results relate only to the samples identified above. This report shall not be reproduced except in full with written approval of Cardinal Laboratories.



Celey D. Keene, Lab Director/Quality Manager


Notes and Definitions

ND	Analyte NOT DETECTED at or above the reporting limit
RPD	Relative Percent Difference
**	Samples not received at proper temperature of 6°C or below.
***	Insufficient time to reach temperature.
-	Chloride by SM4500Cl-B does not require samples be received at or below 6°C Samples reported on an as received basis (wet) unless otherwise noted on report

Cardinal Laboratories

*=Accredited Analyte

PLEASE NOTE: Liability and Damages. Cardinal's liability and client's exclusive remedy for any claim arising, whether based in contract or tort, shall be limited to the amount paid by client for analyses. All claims, including those for negligence and any other cause whatsoever shall be deemed waived unless made in writing and received by Cardinal within thirty (30) days after completion of the applicable service. In no event shall Cardinal be liable for incidental or consequential damages, including, without limitation, business interruptions, loss of use, or loss of profits incurred by client, its subsidiaries, affiliates or successors arising out of or related to the performance of the services hereunder by Cardinal, regardless of whether such claim is based upon any of the above stated reasons or otherwise. Results relate only to the samples identified above. This report shall not be reproduced except in full with written approval of Cardinal Laboratories.



Celest D. Keene, Lab Director/Quality Manager



(575) 393-2326 FAX (575) 393-2476

Page 5 of 5

PLEASE NOTE: Liability and Damages. Cardinal's liability and client's exclusive remedy for any claim arising whether based in contract or tort, shall be limited to the amount paid by the client for the analyses. All claims including those for negligence and any other cause whatsoever shall be deemed waived unless made in writing and received by Cardinal within 30 days after completion of the applicable service. In no event shall Cardinal be liable for incidental or consequential damages, including without limitation, business interruptions, loss of use, or loss of profits incurred by client, its subsidiaries, affiliates or successors arising out of or related to the performance of services hereunder by Cardinal, regardless of whether such claim is based upon any of the above stated reasons or otherwise.

† Cardinal cannot accept verbal changes. Please fax written changes to 575-393-2476

#54

February 21, 2014

JOEL LOWRY

Basin Environmental Service

P.O. Box 301

Lovington, NM 88260

RE: PLU #190

Enclosed are the results of analyses for samples received by the laboratory on 02/17/14 15:00.

Cardinal Laboratories is accredited through Texas NELAP under certificate number T104704398-13-5. Accreditation applies to drinking water, non-potable water and solid and chemical materials. All accredited analytes are denoted by an asterisk (*). For a complete list of accredited analytes and matrices visit the TCEQ website at www.tceq.texas.gov/field/qa/lab_accred_certif.html.

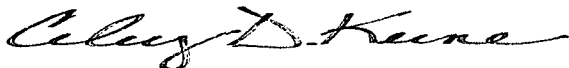
Cardinal Laboratories is accredited through the State of Colorado Department of Public Health and Environment for:

Method EPA 552.2	Haloacetic Acids (HAA-5)
Method EPA 524.2	Total Trihalomethanes (TTHM)
Method EPA 524.4	Regulated VOCs (V1, V2, V3)

Accreditation applies to public drinking water matrices.

This report meets NELAP requirements and is made up of a cover page, analytical results, and a copy of the original chain-of-custody. If you have any questions concerning this report, please feel free to contact me.

Sincerely,



Celey D. Keene

Lab Director/Quality Manager

Analytical Results For:

Basin Environmental Service
JOEL LOWRY
P.O. Box 301
Lovington NM, 88260
Fax To: (575) 396-1429

Received: 02/17/2014
Reported: 02/21/2014
Project Name: PLU #190
Project Number: NONE GIVEN
Project Location: EDDY COUNTY, NM

Sampling Date: 02/14/2014
Sampling Type: Soil
Sampling Condition: Cool & Intact
Sample Received By: Jodi Hanson

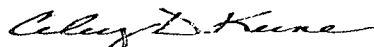
Sample ID: WSW #1 (H400470-01)

Chloride, SM4500Cl-B		mg/kg		Analyzed By: HM					
Analyte	Result	Reporting Limit	Analyzed	Method Blank	BS	% Recovery	True Value QC	RPD	Qualifier
Chloride	1960	16.0	02/20/2014	ND	416	104	400	3.77	

Cardinal Laboratories

*=Accredited Analyte

PLEASE NOTE: Liability and Damages. Cardinal's liability and client's exclusive remedy for any claim arising, whether based in contract or tort, shall be limited to the amount paid by client for analyses. All claims, including those for negligence and any other cause whatsoever shall be deemed waived unless made in writing and received by Cardinal within thirty (30) days after completion of the applicable service. In no event shall Cardinal be liable for incidental or consequential damages, including, without limitation, business interruptions, loss of use, or loss of profits incurred by client, its subsidiaries, affiliates or successors arising out of or related to the performance of the services hereunder by Cardinal, regardless of whether such claim is based upon any of the above stated reasons or otherwise. Results relate only to the samples identified above. This report shall not be reproduced except in full with written approval of Cardinal Laboratories.



Celey D. Keene, Lab Director/Quality Manager

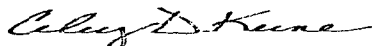
Notes and Definitions

ND	Analyte NOT DETECTED at or above the reporting limit
RPD	Relative Percent Difference
**	Samples not received at proper temperature of 6°C or below.
***	Insufficient time to reach temperature.
-	Chloride by SM4500Cl-B does not require samples be received at or below 6°C Samples reported on an as received basis (wet) unless otherwise noted on report

Cardinal Laboratories

*=Accredited Analyte

PLEASE NOTE: Liability and Damages. Cardinal's liability and client's exclusive remedy for any claim arising, whether based in contract or tort, shall be limited to the amount paid by client for analyses. All claims, including those for negligence and any other cause whatsoever shall be deemed waived unless made in writing and received by Cardinal within thirty (30) days after completion of the applicable service. In no event shall Cardinal be liable for incidental or consequential damages, including, without limitation, business interruptions, loss of use, or loss of profits incurred by client, its subsidiaries, affiliates or successors arising out of or related to the performance of the services hereunder by Cardinal, regardless of whether such claim is based upon any of the above stated reasons or otherwise. Results relate only to the samples identified above. This report shall not be reproduced except in full with written approval of Cardinal Laboratories.



Celey D. Keene, Lab Director/Quality Manager

