



Devon Energy

Antares 23 Federal 2H

CLOSURE REPORT

API No. 30-015-41106

Release Date: 03/18/14

Unit Letter D, Section 23, Township 19 South, Range 31 East

April 15, 2014

Prepared by:

Environmental Department
Diversified Field Service, Inc.
3412 N. Dal Paso
Hobbs, NM 88240
Phone: (575)964-8394
Fax: (575)393-8396

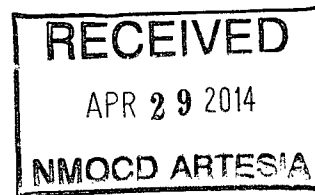


Table of Contents

- 1 Introduction
- 2 Site Activities
- 3 Conclusion

Figure – Site Diagram with Sample Data

APPENDICES

Appendix I – Initial Form C-141

Appendix II – Site Photographs

Appendix III – Groundwater Data

Appendix IV – Laboratory Analyses

Appendix V – Final C-141

Antares 23 Federal 2H

Introduction

Linn Energy (Linn) has retained Diversified Field Service, Inc. (DFSI) to address environmental issues for the site detailed herein.

The site is located south of Maljamar NM, in Eddy County. The site resulted from a produced water and crude oil leak in a ruptured flow line. The line rupture released produced water and oil onto approximately 6,702 square feet of the well pad. A vacuum truck was utilized to recover approximately 15bbls. Of standing fluids, the line was repaired. Henceforth, measures have been taken to insure that Murphy switches are set at correct pressures. An initial form C-141 was submitted to the NMOCD on March 20, 2014 (Appendix I).

1 SITE ACTIVITIES

On March 27, 2014 DFSI personnel delineated the site at four sample points. Samples were collected from the site (Figure). The samples were field screened for chloride and showed elevated levels in all of the sample points. The samples were submitted to a commercial laboratory for chloride, TPH, and BTEX analyses (Appendix IV).

Visually impacted soils were excavated throughout the entire leak area and removed to a NMOCD approved disposal facility. Simultaneous soil field testing revealed low chloride and hydrocarbon levels at 1 to 3ft. below ground surface (bgs) (Figure). Soil samples were collected from the excavation floor and submitted to a laboratory for confirmation (Appendix IV). Chloride were significantly reduced at 1ft bgs on all sample points, in that lab confirmations returned analyses of <624 mg/kg. TPH totaled less than 10.0 mg/kg GRO and less than 10.0 mg/kg DRO, and BTEX totaled less than 0.300 mg/kg in all samples.

On March 31, 2014 DFSI obtained verbal confirmation from BLM specialist, Jeff Robertson to excavate pad area in its entirety to 1ft. bgs., and backfill with fresh caliche. Photographs of site activities can be viewed in Appendix II.

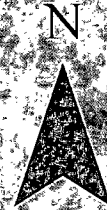
2 CONCLUSION

According to the U.S. Geological Survey and the NM Office of the State Engineer, depth to groundwater in the area averages greater than 171 ft. bgs (Appendix III). Based on the removal of soils containing elevated chloride and visual staining at the site, DFSI, on behalf of Devon Energy, submits the final form C-141 (Appendix V) and respectfully requests the closure of the regulatory file for the site.

Site Diagram

Devon, Antares 23 Federal #1H
Eddy County, NM
Drafted By: Lance Crenshaw, 3-27-14

0 0.0045 0.009 0.018 Miles



Spill Area:
6,702 sq. ft.

Note: Imagery with
Google Maps and
Arc Maps is not
current with this
location. The spill
area is over a Devon
pad.

Legend

- △ sample_pts
- ☆ Source

Pipeline

Type

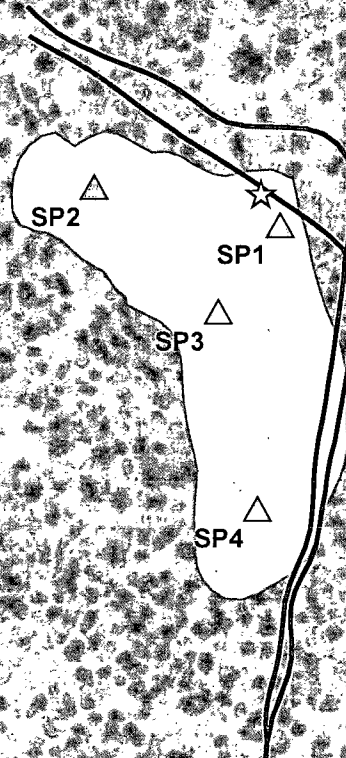
- Above Ground Line
- - - Buried Line

Spill

- <all other values>

Spill_Media

- Oil and Produced H2O
- Oil
- Other
- Produced Water



Lance Crenshaw
GIS Technician

Soil Remediation and Ground Water Remediation
Environmental Assessments
Regulatory Compliance



Environmental

DFSI

Services

Office: 575-964-8394

Fax: 575-964-8396

Cell: 575-441-2359

Email: lcrenshaw@diversifiedfsi.com

Source: Esri, DigitalGlobe, GeoEye, AeroGRID, IGN, and the GIS User Community

Appendix I

INITIAL FORM C-141

Diversified Field Service, Inc.
3412 N. Dal Paso
Hobbs, NM 88240
(575) 964-8394

District I
1625 N. French Dr., Hobbs, NM 88240
District II
811 S. First St., Artesia, NM 88210
District III
1000 Rio Brazos Road, Aztec, NM 87410
District IV
1220 S. St. Francis Dr., Santa Fe, NM 87505

State of New Mexico
Energy Minerals and Natural Resources

Oil Conservation Division
1220 South St. Francis Dr.
Santa Fe, NM 87505

Form C-141
Revised August 8, 2011

Submit 1 Copy to appropriate District Office in
accordance with 19.15.29 NMAC.

Release Notification and Corrective Action

OPERATOR

☒ Initial Report ☐ Final Report

Name of Company Devon Energy	Contact Jaime Castillo	
Address PO Box 250 Artesia, NM 88211	Telephone No. 575- 748-5502	
Facility Name Antares 23 Federal 2H	Facility Type Oil Well	
Surface Owner Federal	Mineral Owner Federal	API No. 3001541106

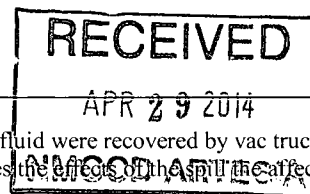
LOCATION OF RELEASE

Unit Letter D	Section 23	Township 19S	Range 31E	Feet from the 180	North/South Line FNL	Feet from the 225	East/West Line FWL	County Eddy
-------------------------	----------------------	------------------------	---------------------	-----------------------------	--------------------------------	-----------------------------	------------------------------	-----------------------

Latitude: Longitude: __

NATURE OF RELEASE

Type of Release Spill	Volume of Release 20bbls	Volume Recovered 15bbls
Source of Release flow line rupture	Date and Hour of Occurrence 3/18/14 5:45PM	Date and Hour of Discovery 3/18/14 5:45PM
Was Immediate Notice Given? <input checked="" type="checkbox"/> Yes <input type="checkbox"/> No <input type="checkbox"/> Not Required	If YES, To Whom? John Barnett-Lease Operator	
By Whom? Eric Lopez- Night Lease Operator	Date and Hour 3/18/14 6:00PM	
Was a Watercourse Reached? <input type="checkbox"/> Yes <input checked="" type="checkbox"/> No	If YES, Volume Impacting the Watercourse. N/A	
If a Watercourse was Impacted, Describe Fully.* N/A		
Describe Cause of Problem and Remedial Action Taken.* Surge in pressure caused a rupture in the flow line resulting in a spill of 20bbls of produced fluid; oil and water. Flow line has been repaired and efforts will be made to ensure Murphy switches are set at correct pressure.		
Describe Area Affected and Cleanup Action Taken.* The area affected was approximately 70'x70' on the NE side of the facility near the pump jack. 15 bbls of spilled fluid were recovered by vac truck services the same day of the incident. After a representative from the Bureau of Land Management (BLM) analyzes the effects of the spill the affected soil will be removed and replaced. Talon LPE will complete soil sampling if deemed necessary by the BLM.		



I hereby certify that the information given above is true and complete to the best of my knowledge and understand that pursuant to NMOCD rules and regulations all operators are required to report and/or file certain release notifications and perform corrective actions for releases which may endanger public health or the environment. The acceptance of a C-141 report by the NMOCD marked as "Final Report" does not relieve the operator of liability should their operations have failed to adequately investigate and remediate contamination that pose a threat to ground water, surface water, human health or the environment. In addition, NMOCD acceptance of a C-141 report does not relieve the operator of responsibility for compliance with any other federal, state, or local laws and/or regulations.

Signature: Sandra Farley	OIL CONSERVATION DIVISION	
Printed Name: Sandra Farley	Approved by Environmental Specialist:	
Title: Field Admin Support	Approval Date:	Expiration Date:
E-mail Address: Sandy.Farley@dvn.com	Conditions of Approval:	Attached <input type="checkbox"/>
Date: 3.20.14 Phone: 575.746.5587		

* Attach Additional Sheets If Necessary

Appendix II

SITE PHOTOGRAPHS

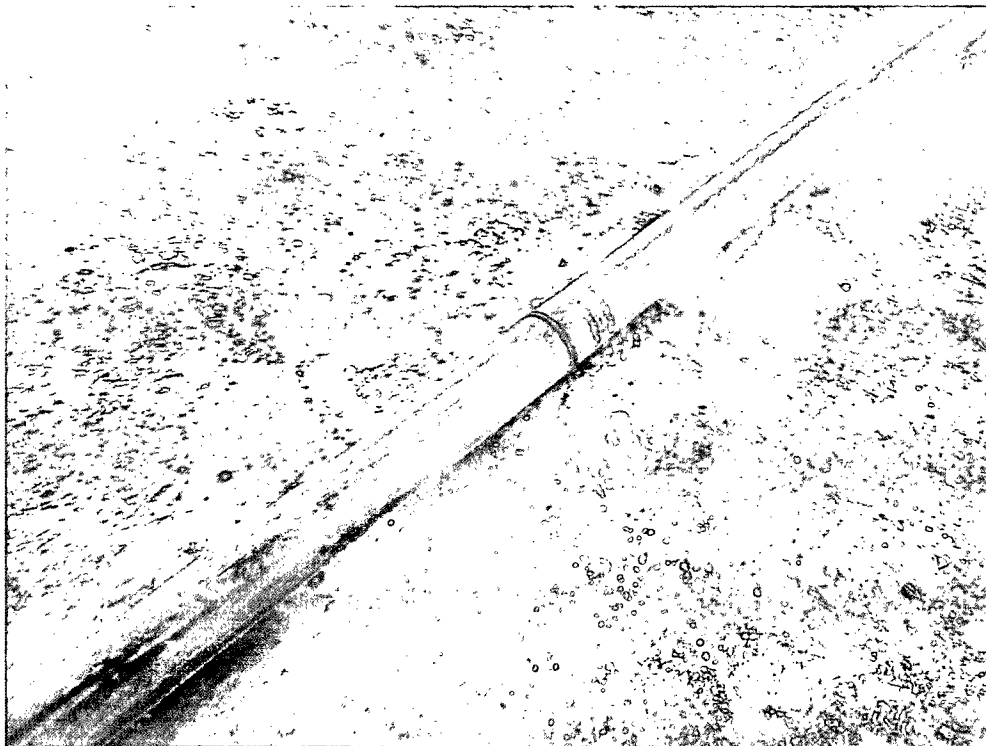
Diversified Field Service, Inc.
3412 N. Dal Paso
Hobbs, NM 88240
(575) 964-8394

Devon Antares 23 Federal 1H

Unit Letter D, Section 23, T19S R31E



Sign Marking Location 3/27/14



Ruptured flow line causing spill 3/27/14



Impacted pad area 3/27/14

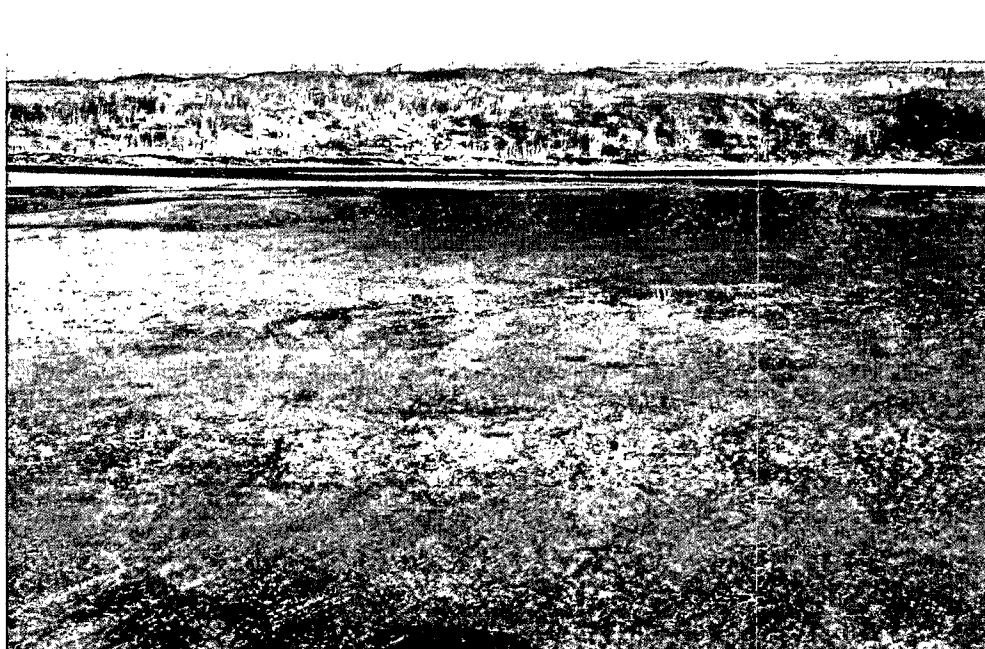
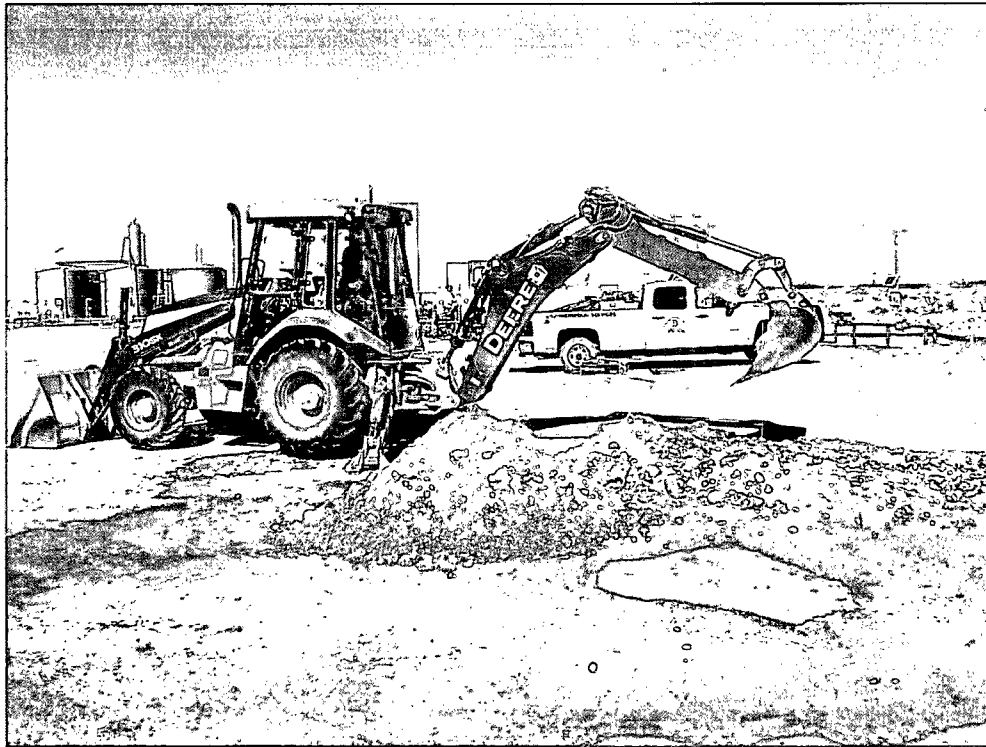
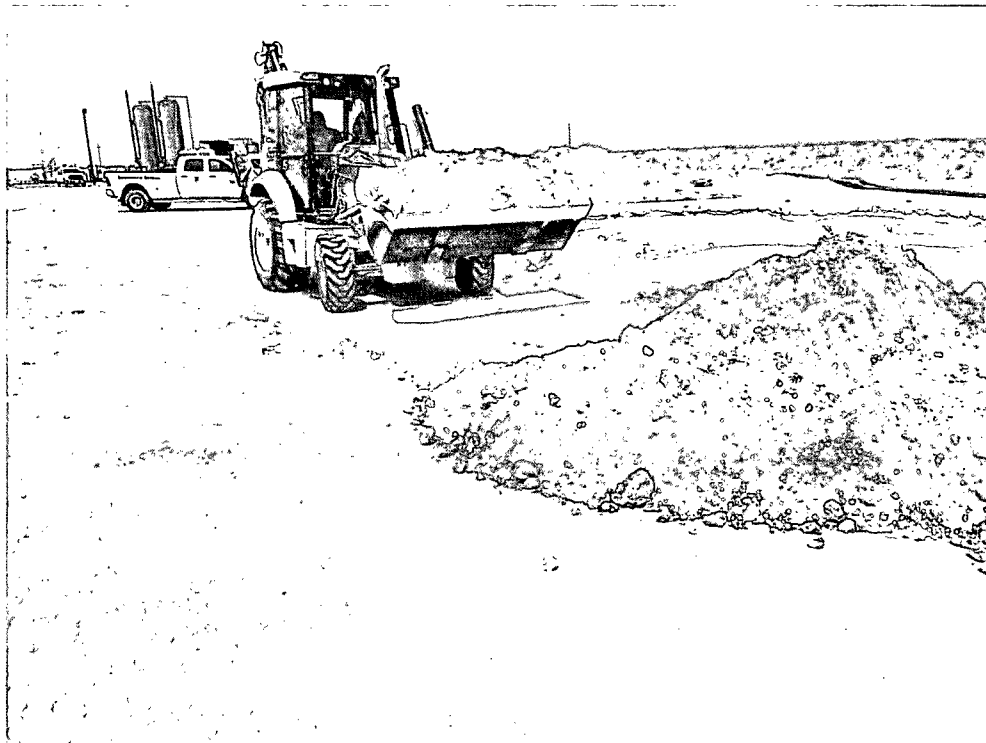


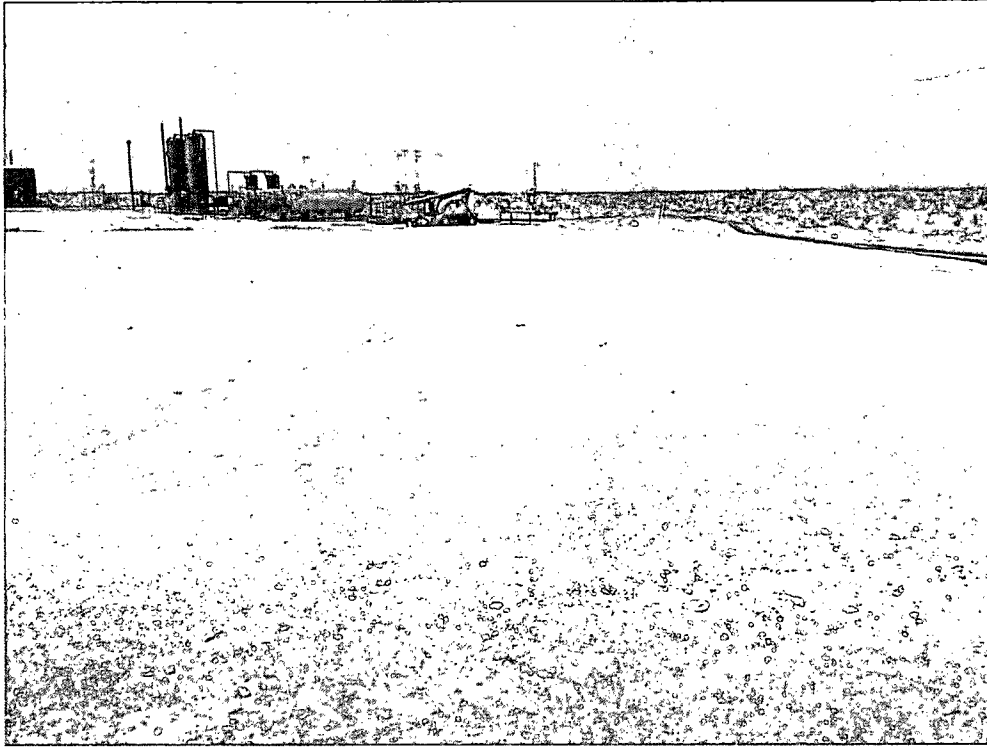
Photo labeling sample points 3/27/14



Excavation of impacted caliche 3/31/14



Backfilling excavation 4/1/14



Site at completion 4/7/14

Appendix III

GROUNDWATER DATA

Diversified Field Service, Inc.
3412 N. Dal Paso
Hobbs, NM 88240
(575) 964-8394

GROUND WATER SEARCH

Linn Energy Skelly Unit #273

UL: D

Sec: 23

T: 19S

R: 31E

Groundwater Depth: 171~ ft.

○ = NM Office of the State Engineer

● = U.S. Geological Survey (unknown well)

✕ = Site Location

Date: 04/16/14

By: Rebecca Pons

	18S 30E	18S 31E	65' Frizzell ○ 430' VL Estate 18S 32E	
	19S 30E ○ 90' Carpenter ○ 115' Fred Pool Drilling	19S 31E ✕ 130' Phillips EXPL ○	345' 19S 32E ○ 102' Phillips Petro. Co	
	Yates Petro. 20S 30E ○ Amaco McVay Drilling ○ Pennzoil	Perry & Bass 20S 31E ○ Ballard	20S 32E	



New Mexico Office of the State Engineer

Water Column/Average Depth to Water

(A CLW##### in the
POD suffix indicates the
POD has been replaced
& no longer serves a
water right file.)

(R=POD has
been replaced,
O=orphaned,
C=the file is
closed) (quarters are 1=NW 2=NE 3=SW 4=SE)
(quarters are smallest to largest) (NAD83 UTM in meters) (In feet)

POD Number	POD Sub-Code	basin	County	Q 64	Q 16	Q 4	Sec	Tws	Rng	X	Y	Depth Well	Depth Water	Water Column
CP 00818			LE	1	4	26	18S	30E		599289	3620364*	240		
CP 00819			LE	2	4	32	18S	30E		594878	3618720*	150		

Average Depth to Water: --
Minimum Depth: --
Maximum Depth: --

Record Count: 2

PLSS Search:

Township: 18S Range: 30E

*UTM location was derived from PLSS - see Help

The data is furnished by the NMOSE/ISC and is accepted by the recipient with the expressed understanding that the OSE/ISC make no warranties, expressed or implied, concerning the accuracy, completeness, reliability, usability, or suitability for any particular purpose of the data.



New Mexico Office of the State Engineer

Water Column/Average Depth to Water

No records found.

PLSS Search:

Township: 18S **Range:** 31E



New Mexico Office of the State Engineer

Water Column/Average Depth to Water

(A CLW##### in the
POD suffix indicates the
POD has been replaced
& no longer serves a
water right file.)

(R=POD has
been replaced,
O=orphaned,
C=the file is

closed) (quarters are 1=NW 2=NE 3=SW 4=SE)
(quarters are smallest to largest)

(NAD83 UTM in meters)

(In feet)

POD Number	POD Sub- Code	basin	County	Q Q Q			Sec	Tws	Rng	X	Y	Depth Well	Depth Water	Water Column
				64	16	4								
<u>CP 00566</u>			LE	4	4	1	04	18S	32E	614960	3627280*	133	65	68
<u>CP 00672</u>			LE		4	4	07	18S	32E	612475	3624947*	524	430	94
<u>CP 00672 CLW475398</u>	O		LE		4	4	07	18S	32E	612475	3624947*	540	460	80
<u>CP 00677</u>			LE		1	1	26	18S	32E	617750	3621373*	700		

Average Depth to Water: **318 feet**

Minimum Depth: **65 feet**

Maximum Depth: **460 feet**

Record Count: 4

PLSS Search:

Township: 18S

Range: 32E

*UTM location was derived from PLSS - see Help

The data is furnished by the NMOSE/ISC and is accepted by the recipient with the expressed understanding that the OSE/ISC make no warranties, expressed or implied, concerning the accuracy, completeness, reliability, usability, or suitability for any particular purpose of the data.



New Mexico Office of the State Engineer

Active & Inactive Points of Diversion

(with Ownership Information)

(acre ft per annum)

(R=POD has been replaced
and no longer serves this file, (quarters are 1=NW 2=NE 3=SW 4=SE)
C=the file is closed) (quarters are smallest to largest) (NAD83 UTM in meters)

File Nbr	Sub basin	Use	Diversion	Owner	County	POD Number	Code	Grant	Source	q	q	q	Sec	Tws	Rng	X	Y
0566		DOM		3 B.E. FRIZZELL	LE	CP 00566			Shallow	4	4	1	04	18S	32E	614960	3627280*

Record Count: 1

POD Search:

POD Number: CP 00566

Sorted by: File Number

Location was derived from PLSS - see Help

Data is furnished by the NMOSE/ISC and is accepted by the recipient with the expressed understanding that the OSE/ISC make no warranties, expressed or implied, concerning the accuracy, completeness, reliability, usability, or suitability for any particular purpose of the data.



New Mexico Office of the State Engineer

Active & Inactive Points of Diversion

(with Ownership Information)

(acre ft per annum)

File Nbr	Sub	basin	Use	Diversion	Owner	County	POD Number	Code Grant	Source	6416 4	Sec	Tws	Rng	X	Y
0672			STK		3 VIRGIL LINAM ESTATE	LE	CP 00672		Shallow	4	4	07	18S 32E	612475	3624947*

(R=POD has been replaced
and no longer serves this file, (quarters are 1=NW 2=NE 3=SW 4=SE)
C=the file is closed) (quarters are smallest to largest) (NAD83 UTM in meters)

q q q

ord Count: 1

POD Search:

POD Number: CP 00672

Sorted by: File Number

All location was derived from PLSS - see Help

data is furnished by the NMOSE/ISC and is accepted by the recipient with the expressed understanding that the OSE/ISC make no warranties, expressed or implied, concerning the accuracy, completeness, quality, usability, or suitability for any particular purpose of the data.



New Mexico Office of the State Engineer

Active & Inactive Points of Diversion

(with Ownership Information)

(acre ft per annum)

(R=POD has been replaced
and no longer serves this file, (quarters are 1=NW 2=NE 3=SW 4=SE)
C=the file is closed) (quarters are smallest to largest) (NAD83 UTM in meters)

File Nbr	Sub basin	Use	Diversion	Owner	County	POD Number	Code Grant	Source	q q q	6416 4	Sec	Tws	Rng	X	Y
0677		PRO		0 T X O PROD.	LE	CP 00677			1 1	26	18S	32E		617750	3621373*

rd Count: 1

POD Search:

POD Number: CP 00677

Sorted by: File Number

Location was derived from PLSS - see Help

Data is furnished by the NMOSE/ISC and is accepted by the recipient with the expressed understanding that the OSE/ISC make no warranties, expressed or implied, concerning the accuracy, completeness, utility, usability, or suitability for any particular purpose of the data.



New Mexico Office of the State Engineer

Water Column/Average Depth to Water

(A CLW#### in the
POD suffix indicates the
POD has been replaced
& no longer serves a
water right file.)

(R=POD has
been replaced,
O=orphaned,
C=the file is
closed)

(quarters are 1=NW 2=NE 3=SW 4=SE)

(quarters are smallest to largest) (NAD83 UTM in meters)

(In feet)

POD Number	POD Sub- Code basin	Q Q Q				Sec	Tws	Rng	X	Y	Depth Well	Depth Water	Water Column
		64	16	4	4								
<u>CP 00522</u>	ED			3	30	19S	30E		592347	3610451*	120	90	30
<u>CP 00742</u>	ED			3	3	31	19S	30E	592158	3608638*	223	115	108
<u>CP 00822</u>	LE			4	4	15	19S	30E	598148	3613516*	90		
<u>CP 00823</u>	LE			1	3	17	19S	30E	593715	3613885*	120		
<u>CP 00824</u>	LE			4	1	20	19S	30E	594129	3612680*	70		
<u>CP 00825</u>	LE			3	4	28	19S	30E	596164	3610282*	100		
<u>CP 00827</u>	LE			3	3	35	19S	30E	598596	3608694*	100		
<u>CP 00828</u>	LE			1	1	35	19S	30E	598585	3609900*	90		

Average Depth to Water: **102 feet**

Minimum Depth: **90 feet**

Maximum Depth: **115 feet**

Record Count: 8

PLSS Search:

Township: 19S

Range: 30E

*UTM location was derived from PLSS - see Help

The data is furnished by the NMOSE/ISC and is accepted by the recipient with the expressed understanding that the OSE/ISC make no warranties, expressed or implied, concerning the accuracy, completeness, reliability, usability, or suitability for any particular purpose of the data.



New Mexico Office of the State Engineer

Active & Inactive Points of Diversion

(with Ownership Information)

(acre ft per annum)

(R=POD has been replaced

and no longer serves this file, (quarters are 1=NW 2=NE 3=SW 4=SE)

C=the file is closed)

(quarters are smallest to largest) (NAD83 UTM in meters)

q q q

File Nbr	Sub	basin	Use	Diversion	Owner	County	POD Number	Code	Grant	Source	6416 4	Sec	Tws	Rng	X	Y
0522			STK		3 HAROLD R. CARPENTER	ED	CP 00522			Shallow	3	30	19S	30E	592347	3610451*

Record Count: 1

POD Search:

POD Number: CP 00522

Sorted by: File Number

All location was derived from PLSS - see Help

data is furnished by the NMOSE/ISC and is accepted by the recipient with the expressed understanding that the OSE/ISC make no warranties, expressed or implied, concerning the accuracy, completeness, reliability, usability, or suitability for any particular purpose of the data.

3/14 10:13 AM



New Mexico Office of the State Engineer

Active & Inactive Points of Diversion

(with Ownership Information)

(acre ft per annum)

(R=POD has been replaced
and no longer serves this file, (quarters are 1=NW 2=NE 3=SW 4=SE)
C=the file is closed) (quarters are smallest to largest) (NAD83 UTM in meters)

File Nbr	Sub basin	Use	Diversion	Owner	County	POD Number	Code	Grant	Source	q q q	6416 4	Sec	Tws	Rng	X	Y
0742		PRO		0 FRED POOL DRILLING	ED	CP 00742			Shallow	3 3 31	19S	30E		592158	3608638*	

ord Count: 1

POD Search:

POD Number: CP 00742

Sorted by: File Number

Location was derived from PLSS - see Help

data is furnished by the NMOSE/ISC and is accepted by the recipient with the expressed understanding that the OSE/ISC make no warranties, expressed or implied, concerning the accuracy, completeness, reliability, usability, or suitability for any particular purpose of the data.



New Mexico Office of the State Engineer

Water Column/Average Depth to Water

(A CLW##### in the
POD suffix indicates the
POD has been replaced
& no longer serves a
water right file.)

(R=POD has
been replaced,

O=orphaned,

C=the file is (quarters are 1=NW 2=NE 3=SW 4=SE)

closed) (quarters are smallest to largest) (NAD83 UTM in meters)

(In feet)

POD Number	POD		Q Q Q				X	Y	Depth Well	Depth Water	Water Column
	Sub- Code	basin	County	64	16	4 Sec	Tws	Rng			
CP 00641 EXPL			ED	4	1	36	19S	31E	610247	3609634*	300 130 170
CP 00642 EXPL			ED	2	2	25	19S	31E	611025	3611657*	250
CP 00829			LE	2	4	16	19S	31E	606165	3614009*	120

Average Depth to Water: 130 feet

Minimum Depth: 130 feet

Maximum Depth: 130 feet

Record Count: 3

PLSS Search:

Township: 19S

Range: 31E

*UTM location was derived from PLSS - see Help

The data is furnished by the NMOSE/ISC and is accepted by the recipient with the expressed understanding that the OSE/ISC make no warranties, expressed or implied, concerning the accuracy, completeness, reliability, usability, or suitability for any particular purpose of the data.



New Mexico Office of the State Engineer

Active & Inactive Points of Diversion

(with Ownership Information)

(acre ft per annum)										(R=POD has been replaced and no longer serves this file, (quarters are 1=NW 2=NE 3=SW 4=SE) C=the file is closed) (quarters are smallest to largest) (NAD83 UTM in meters)									
File Nbr	Sub basin	Use	Diversion	Owner	County	POD Number	Code	Grant	Source	q q q					X	Y			
										6416	4	Sec	Tws	Rng					
0641		EXP		3 PHILLIPS PETROLEUM COMPANY	ED	CP 00641 EXPL				4	1	36	19S	31E	610247	3609634*			

Word Count: 1

POD Search:

POD Number: CP 00641 EXPL

Sorted by: File Number



New Mexico Office of the State Engineer

Water Column/Average Depth to Water

(A CLW##### in the
POD suffix indicates the
POD has been replaced
& no longer serves a
water right file.)

(R=POD has
been replaced,
O=orphaned,
C=the file is

closed) (quarters are 1=NW 2=NE 3=SW 4=SE)

(quarters are smallest to largest) (NAD83 UTM in meters)

(In feet)

POD Number	POD		Q Q Q					X	Y	Depth Well	Depth Water	Water Column
	Sub- Code	basin	County	64	16	4	Sec	Tws	Rng			
<u>CP 00073</u>			LE	2	4	34	19S	32E	617502	3609301*	575	
<u>CP 00075</u>			LE	2	4	34	19S	32E	617502	3609301*	575	
<u>CP 00639 EXPL</u>			LE	3	1	20	19S	32E	613029	3612880*	350	345 5
<u>CP 00640 EXPL</u>			LE	2	2	19	19S	32E	612621	3613280*	260	102 158

Average Depth to Water: **223 feet**

Minimum Depth: **102 feet**

Maximum Depth: **345 feet**

Record Count: 4

PLSS Search:

Township: 19S

Range: 32E

*UTM location was derived from PLSS - see Help

The data is furnished by the NMOSE/ISC and is accepted by the recipient with the expressed understanding that the OSE/ISC make no warranties, expressed or implied, concerning the accuracy, completeness, reliability, usability, or suitability for any particular purpose of the data.



New Mexico Office of the State Engineer

Active & Inactive Points of Diversion

(with Ownership Information)

(acre ft per annum)

(R=POD has been replaced
and no longer serves this file, (quarters are 1=NW 2=NE 3=SW 4=SE)
C=the file is closed) (quarters are smallest to largest) (NAD83 UTM in meters)

File Nbr	Sub basin	Use	Diversion	Owner	County	POD Number	Code Grant	Source	q q q	6416 4	Sec	Tws	Rng	X	Y
0073		PRO	20	G. KELLY STOUT	LE	CP 00073			2 4 34 19S 32E	617502	3609301*				

Record Count: 1

POD Search:

POD Number: CP 00073

Sorted by: File Number

All location was derived from PLSS - see Help

data is furnished by the NMOSE/ISC and is accepted by the recipient with the expressed understanding that the OSE/ISC make no warranties, expressed or implied, concerning the accuracy, completeness, quality, usability, or suitability for any particular purpose of the data.



New Mexico Office of the State Engineer

Active & Inactive Points of Diversion

(with Ownership Information)

(acre ft per annum)

(R=POD has been replaced

and no longer serves this file, (quarters are 1=NW 2=NE 3=SW 4=SE)

C=the file is closed)

(quarters are smallest to largest) (NAD83 UTM in meters)

File Nbr	Sub	basin	Use	Diversion	Owner	County	POD Number	Code	Grant	Source	q	q	q	Sec	Tws	Rng	X	Y
0639			EXP		3 PHILIP PETROLEUM COMPANY	LE	CP 00639 EXPL			6416 4	3	1	20	19S	32E		613029	3612880*

ord Count: 1

POD Search:

POD Number: CP 00639 EXPL

Sorted by: File Number

location was derived from PLSS - see Help

data is furnished by the NMOSE/ISC and is accepted by the recipient with the expressed understanding that the OSE/ISC make no warranties, expressed or implied, concerning the accuracy, completeness, reliability, usability, or suitability for any particular purpose of the data.

3/14 10:29 AM



New Mexico Office of the State Engineer

Active & Inactive Points of Diversion

(with Ownership Information)

(R=POD has been replaced
and no longer serves this file, (quarters are 1=NW 2=NE 3=SW 4=SE)
C=the file is closed) (quarters are smallest to largest) (NAD83 UTM in meters)

(acre ft per annum)										C=the file is closed)		(quarters are smallest to largest) (NAD83 UTM in meters)									
File Nbr	Sub	basin	Use	Diversion	Owner	County	POD Number	Code	Grant	Source	q q q					X	Y				
											6416 4	Sec	Tws	Rng							
0640			EXP		3 PHILLIPS PETROLEUM COMPANY	LE	CP 00640 EXPL				2 2	19	19S	32E	612621	3613280*					

Word Count: 1

POD Search:

POD Number: CP 00640 EXPL

Sorted by: File Number

1 location was derived from PLSS - see Help

Data is furnished by the NMOSE/ISC and is accepted by the recipient with the expressed understanding that the OSE/ISC make no warranties, expressed or implied, concerning the accuracy, completeness, reliability, usability, or suitability for any particular purpose of the data.



New Mexico Office of the State Engineer

Water Column/Average Depth to Water

(A CLW##### in the
POD suffix indicates the
POD has been replaced
& no longer serves a
water right file.)

(R=POD has
been replaced,
O=orphaned,
C=the file is
closed)

(quarters are 1=NW 2=NE 3=SW 4=SE)

(quarters are smallest to largest) (NAD83 UTM in meters)

(In feet)

POD Number	POD		Q Q Q			Sec	Tws	Rng	X	Y		Depth	Depth	Water
	Sub-	Code	basin	County	64 16 4							Well	Water	Column
<u>CP 00419</u>			ED		4 3 32	20S	30E		594250	3599003*		262	170	92
<u>CP 00431</u>			ED		2 3 33	20S	30E		595857	3599419*		235	195	40
<u>CP 00532</u>			ED		4 3 4 21	20S	30E		596328	3602138*		335	150	185
<u>CP 00551</u>			ED		1 1 1 33	20S	30E		595343	3600320*		286	187	99
<u>CP 00775</u>			ED		2 1 4 11	20S	30E		599515	3605981*		350	40	310
<u>CP 00834</u>			LE		2 3 06	20S	30E		592566	3607436*		120		

Average Depth to Water: **148 feet**

Minimum Depth: **40 feet**

Maximum Depth: **195 feet**

Record Count: 6

PLSS Search:

Township: 20S

Range: 30E

*UTM location was derived from PLSS - see Help

The data is furnished by the NMOSE/ISC and is accepted by the recipient with the expressed understanding that the OSE/ISC make no warranties, expressed or implied, concerning the accuracy, completeness, reliability, usability, or suitability for any particular purpose of the data.



New Mexico Office of the State Engineer

Active & Inactive Points of Diversion

(with Ownership Information)

(R=POD has been replaced
and no longer serves this file, (quarters are 1=NW 2=NE 3=SW 4=SE)
C=the file is closed) (quarters are smallest to largest) (NAD83 UTM in meters)

(acre ft per annum)					C=the file is closed)		(quarters are smallest to largest)					(NAD83 UTM in meters)						
File Nbr	Sub	basin	Use	Diversion	Owner	County	POD Number	Code	Grant	Source	q	q	q	Sec	Tws	Rng	X	Y
0419			PRO		0 MCVAY DRILLING COMPANY	ED	CP 00419			Shallow	4	3	32	20S	30E		594250	3599003*

ord Count: 1

POD Search:

POD Number: CP 00419

Sorted by: File Number

Location was derived from PLSS - see Help

data is furnished by the NMOSE/ISC and is accepted by the recipient with the expressed understanding that the OSE/ISC make no warranties, expressed or implied, concerning the accuracy, completeness, reliability, usability, or suitability for any particular purpose of the data.



New Mexico Office of the State Engineer

Active & Inactive Points of Diversion

(with Ownership Information)

(acre ft per annum)

(R=POD has been replaced

and no longer serves this file, (quarters are 1=NW 2=NE 3=SW 4=SE)

C=the file is closed)

(quarters are smallest to largest) (NAD83 UTM in meters)

q q q

File Nbr	Sub	basin	Use	Diversion	Owner	County	POD Number	Code	Grant	Source	6416 4	Sec	Tw	Rs	Rng	X	Y
0431			PRO		0 PENNZOIL COMPANY	ED	CP 00431			Shallow	2	3	33	20S	30E	595857	3599419*

ord Count: 1

POD Search:

POD Number: CP 00431

Sorted by: File Number

A location was derived from PLSS - see Help

data is furnished by the NMOSE/ISC and is accepted by the recipient with the expressed understanding that the OSE/ISC make no warranties, expressed or implied, concerning the accuracy, completeness, utility, usability, or suitability for any particular purpose of the data.

3/14 10:52 AM

Page 1 of 1

ACTIVE & INACTIVE POINTS OF DIVERSION



New Mexico Office of the State Engineer

Active & Inactive Points of Diversion

(with Ownership Information)

(acre ft per annum)

File Nbr	Sub	basin	Use	Diversion	Owner	County	POD Number	Code	Grant	Source	q	q	q	Sec	Tws	Rng	X	Y
0532			PRO		0 AMOCO PRODUCTION COMPANY	ED	CP 00532			Shallow	4	3	4	21	20S	30E	596328	3602138*

(R=POD has been replaced

and no longer serves this file, (quarters are 1=NW 2=NE 3=SW 4=SE)

C=the file is closed)

(quarters are smallest to largest) (NAD83 UTM in meters)

Ord Count: 1

POD Search:

POD Number: CP 00532

Sorted by: File Number

All location was derived from PLSS - see Help

data is furnished by the NMOSE/ISC and is accepted by the recipient with the expressed understanding that the OSE/ISC make no warranties, expressed or implied, concerning the accuracy, completeness, reliability, usability, or suitability for any particular purpose of the data.

3/14 10:52 AM

Page 1 of 1

ACTIVE & INACTIVE POINTS OF DIVERSION



(quarters are smallest to largest) (NAD83 UTM in meters)

Source	6416 4	Sec	Tws	Rng	X	Y
Shallow	1 1 1	33	20S	30E	595343	3600320*

Sorted by: File Number

ACTIVE & INACTIVE POINTS OF DIVERSION



New Mexico Office of the State Engineer

Active & Inactive Points of Diversion

(with Ownership Information)

(acre ft per annum)

File Nbr	Sub	basin	Use	Diversion	Owner	County	POD Number	Code	Grant	Source	q	q	q	Sec	Tws	Rng	X	Y
0775			PRO		0 YATES PETROLEUM	ED	CP 00775			Shallow	2	1	4	11	20S	30E	599515	3605981*

(R=POD has been replaced and no longer serves this file, (quarters are 1=NW 2=NE 3=SW 4=SE)
C=the file is closed) (quarters are smallest to largest) (NAD83 UTM in meters)

q q q

ord Count: 1

POD Search:

POD Number: CP 00775

Sorted by: File Number

All location was derived from PLSS - see Help

data is furnished by the NMOSE/ISC and is accepted by the recipient with the expressed understanding that the OSE/ISC make no warranties, expressed or implied, concerning the accuracy, completeness, reliability, usability, or suitability for any particular purpose of the data.

3/14 10:53 AM



New Mexico Office of the State Engineer

Water Column/Average Depth to Water

(A CLW##### in the
POD suffix indicates the
POD has been replaced
& no longer serves a
water right file.)

(R=POD has
been replaced,
O=orphaned,
C=the file is
closed)

(quarters are 1=NW 2=NE 3=SW 4=SE)

(quarters are smallest to largest) (NAD83 UTM in meters)

(In feet)

POD Number	POD		Q Q Q					X	Y		Depth Well	Depth Water	Water Column
	Sub-	Code	basin	County	64	16	4	Sec	Tws	Rng			
<u>CP 00359</u>				LE	4	3	16	20S	31E	605483	3603944*	133	
<u>CP 00368</u>				LE		2	36	20S	31E	610955	3600163*	303	
<u>CP 00370</u>				LE	1	1	36	20S	31E	609945	3600358*	120	80 40
<u>CP 00520</u>				ED	4	4	1	10	20S	31E	607163	3606278*	280 130 150

Average Depth to Water: **105 feet**

Minimum Depth: **80 feet**

Maximum Depth: **130 feet**

Record Count: 4

PLSS Search:

Township: 20S

Range: 31E

*UTM location was derived from PLSS - see Help

The data is furnished by the NMOSE/ISC and is accepted by the recipient with the expressed understanding that the OSE/ISC make no warranties, expressed or implied, concerning the accuracy, completeness, reliability, usability, or suitability for any particular purpose of the data.



New Mexico Office of the State Engineer

Active & Inactive Points of Diversion

(with Ownership Information)

(acre ft per annum)					(R=POD has been replaced and no longer serves this file, C=the file is closed)		(quarters are 1=NW 2=NE 3=SW 4=SE)		(quarters are smallest to largest) (NAD83 UTM in meters)	
File Nbr	Sub basin	Use	Diversion	Owner	County	POD Number	Code	Grant	Source	q q q
03370		DOM	3	BALLARD & BONFIELD	LE	CP 00370			Shallow	6416 4 1 1 36 20S 31E 609945 3600358*

Record Count: 1

POD Search:

POD Number: CP 00370

Sorted by: File Number

* Location was derived from PLSS - see Help

data is furnished by the NMOSE/ISC and is accepted by the recipient with the expressed understanding that the OSE/ISC make no warranties, expressed or implied, concerning the accuracy, completeness, reliability, usability, or suitability for any particular purpose of the data.



New Mexico Office of the State Engineer

Active & Inactive Points of Diversion

(with Ownership Information)

(acre ft per annum)					(R=POD has been replaced and no longer serves this file, C=the file is closed)		(quarters are 1=NW 2=NE 3=SW 4=SE)		(quarters are smallest to largest) (NAD83 UTM in meters)	
File Nbr	Sub basin	Use	Diversion	Owner	County	POD Number	Code Grant	q q q	Source	X Y
0520		PRO	0	PERRY R. BASS	ED	CP 00520			Shallow 6416 4 4 1 10 20S 31E	607163 3606278*

Record Count: 1

POD Search:

POD Number: CP 00520

Sorted by: File Number

1 location was derived from PLSS - see Help

Data is furnished by the NMOSE/ISC and is accepted by the recipient with the expressed understanding that the OSE/ISC make no warranties, expressed or implied, concerning the accuracy, completeness, reliability, usability, or suitability for any particular purpose of the data.



New Mexico Office of the State Engineer **Water Column/Average Depth to Water**

No records found.

PLSS Search:

Township: 20S **Range:** 32E

Appendix IV

LABORATORY ANALYSES

Diversified Field Service, Inc.
3412 N. Dal Paso
Hobbs, NM 88240
(575) 964-8394

April 01, 2014

JEREMY PORRES

Devon Energy Corp- Artesia

P.O. Box 250

Artesia, NM 88211

RE: ANTARES 23 FED #1H

Enclosed are the results of analyses for samples received by the laboratory on 03/27/14 16:05.

Cardinal Laboratories is accredited through Texas NELAP under certificate number T104704398-13-5. Accreditation applies to drinking water, non-potable water and solid and chemical materials. All accredited analytes are denoted by an asterisk (*). For a complete list of accredited analytes and matrices visit the TCEQ website at www.tceq.texas.gov/field/qa/lab_accred_certif.html.

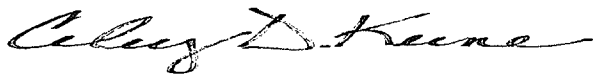
Cardinal Laboratories is accredited through the State of Colorado Department of Public Health and Environment for:

Method EPA 552.2	Haloacetic Acids (HAA-5)
Method EPA 524.2	Total Trihalomethanes (TTHM)
Method EPA 524.4	Regulated VOCs (V1, V2, V3)

Accreditation applies to public drinking water matrices.

This report meets NELAP requirements and is made up of a cover page, analytical results, and a copy of the original chain-of-custody. If you have any questions concerning this report, please feel free to contact me.

Sincerely,



Celey D. Keene

Lab Director/Quality Manager

Analytical Results For:

Devon Energy Corp- Artesia
JEREMY PORRES
P.O. Box 250
Artesia NM, 88211
Fax To: (505) 746-9072

Received: 03/27/2014
Reported: 04/01/2014
Project Name: ANTARES 23 FED #1H
Project Number: NONE GIVEN
Project Location: EDDY COUNTY, NM

Sampling Date: 03/27/2014
Sampling Type: Soil
Sampling Condition: Cool & Intact
Sample Received By: Jodi Henson

Sample ID: SP 1 @ 3' (H400921-01)

Chloride, SM4500CI-B			mg/kg		Analyzed By: AP				
Analyte	Result	Reporting Limit	Analyzed	Method Blank	BS	% Recovery	True Value QC	RPD	Qualifier
Chloride	112	16.0	04/01/2014	ND	416	104	400	3.77	

Sample ID: SP 2 @ 1' (H400921-02)

Chloride, SM4500CI-B			mg/kg		Analyzed By: AP				
Analyte	Result	Reporting Limit	Analyzed	Method Blank	BS	% Recovery	True Value QC	RPD	Qualifier
Chloride	48.0	16.0	04/01/2014	ND	416	104	400	3.77	

Sample ID: SP 3 @ 2' (H400921-03)

Chloride, SM4500CI-B			mg/kg		Analyzed By: AP				
Analyte	Result	Reporting Limit	Analyzed	Method Blank	BS	% Recovery	True Value QC	RPD	Qualifier
Chloride	576	16.0	04/01/2014	ND	416	104	400	3.77	

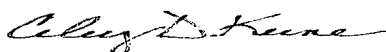
Sample ID: SP 4 @ 1' (H400921-04)

Chloride, SM4500CI-B			mg/kg		Analyzed By: AP				
Analyte	Result	Reporting Limit	Analyzed	Method Blank	BS	% Recovery	True Value QC	RPD	Qualifier
Chloride	48.0	16.0	04/01/2014	ND	416	104	400	3.77	

Cardinal Laboratories

*=Accredited Analyte

PLEASE NOTE: Liability and Damages. Cardinal's liability and client's exclusive remedy for any claim arising, whether based in contract or tort, shall be limited to the amount paid by client for analyses. All claims, including those for negligence and any other cause whatsoever shall be deemed waived unless made in writing and received by Cardinal within thirty (30) days after completion of the applicable service. In no event shall Cardinal be liable for incidental or consequential damages, including, without limitation, business interruptions, loss of use, or loss of profits incurred by client, its subsidiaries, affiliates or successors arising out of or related to the performance of the services hereunder by Cardinal, regardless of whether such claim is based upon any of the above stated reasons or otherwise. Results relate only to the samples identified above. This report shall not be reproduced except in full with written approval of Cardinal Laboratories.



Celey D. Keene, Lab Director/Quality Manager

Notes and Definitions

ND	Analyte NOT DETECTED at or above the reporting limit
RPD	Relative Percent Difference
**	Samples not received at proper temperature of 6°C or below.
***	Insufficient time to reach temperature.
-	Chloride by SM4500Cl-B does not require samples be received at or below 6°C Samples reported on an as received basis (wet) unless otherwise noted on report

Cardinal Laboratories***=Accredited Analyte**

PLEASE NOTE: Liability and Damages. Cardinal's liability and client's exclusive remedy for any claim arising, whether based in contract or tort, shall be limited to the amount paid by client for analyses. All claims, including those for negligence and any other cause whatsoever shall be deemed waived unless made in writing and received by Cardinal within thirty (30) days after completion of the applicable service. In no event shall Cardinal be liable for incidental or consequential damages, including, without limitation, business interruptions, loss of use, or loss of profits incurred by client, its subsidiaries, affiliates or successors arising out of or related to the performance of the services hereunder by Cardinal, regardless of whether such claim is based upon any of the above stated reasons or otherwise. Results relate only to the samples identified above. This report shall not be reproduced except in full with written approval of Cardinal Laboratories.



Celey D. Keene, Lab Director/Quality Manager

CHAIN-OF-CUSTODY AND ANALYSIS REQUEST

101 East Marland, Hobbs, NM 88240
(575) 393-2326 FAX (575) 393-2476

Company Name: <u>Devon Energy</u>				BILL TO				ANALYSIS REQUEST																			
Project Manager: <u>Jeremy Borra</u>				P.O. #:																							
Address:				Company: <u>Devon Energy</u>																							
City:		State:		Zip:		Attn: <u>Jeremy Borra</u>																					
Phone #:		Fax #:		Address:																							
Project #:		Project Owner:		City:																							
Project Name:				State:																Zip:							
Project Location: <u>Antares 23 Fed #1H Eddy CO NM</u>				Phone #:																							
Sampler Name: <u>Michael Alva</u>				Fax #:																							
FOR LAB USE ONLY				MATRIX				PRESERV.		SAMPLING																	
Lab I.D.	Sample I.D.	(G)RAB OR (C)OMP.	# CONTAINERS	GROUNDWATER	WASTEWATER	SOIL	OIL	SLUDGE	OTHER:	ACID/BASE:	ICE / COOL	OTHER:	DATE	TIME													
<u>H400920</u>																											
	<u>1 sp. 1 @ 3'</u>	<u>8</u>	<u>1</u>			<u>X</u>				<u>X</u>			<u>3/27/14</u>	<u>8:11</u>	<u>X</u>												
	<u>2 sp. 2 @ 1'</u>	<u>8</u>	<u>1</u>			<u>X</u>				<u>X</u>			<u>3/27/14</u>	<u>8:40</u>	<u>X</u>												
	<u>3 sp. 3 @ 2'</u>	<u>8</u>	<u>1</u>			<u>X</u>				<u>X</u>			<u>3/27/14</u>	<u>8:00</u>	<u>X</u>												
	<u>4 sp. 4 @ 1'</u>	<u>8</u>	<u>1</u>			<u>X</u>				<u>X</u>			<u>3/27/14</u>	<u>9:00</u>	<u>X</u>												

PLEASE NOTE: Liability and Damages. Cardinal's liability and client's exclusive remedy for any claim arising whether based in contract or tort, shall be limited to the amount paid by the client for the analyses. All claims, including those for negligence and any other cause whatsoever shall be deemed waived unless made in writing and received by Cardinal within 30 days after completion of the applicable service. In no event shall Cardinal be liable for incidental or consequential damages, including without limitation, business interruptions, loss of use, or loss of profits incurred by client, its subsidiaries, affiliates or successors arising out of or related to the performance of services hereunder by Cardinal regardless of whether such claim is based upon any of the above stated reasons or otherwise.

Relinquished By: <u>[Signature]</u>		Date: <u>3/27/14</u>		Received By: <u>[Signature]</u>		Phone Result: <input type="checkbox"/> Yes <input type="checkbox"/> No		Add'l Phone #:	
Time: <u>4:05</u>						Fax Result: <input type="checkbox"/> Yes <input type="checkbox"/> No		Add'l Fax #:	
Relinquished By:		Date:		Received By:		REMARKS:			
Delivered By: (Circle One)		Sample Condition		CHECKED BY:		E-mail Results To: Ngladden@diversifiedfsi.com Rpons@diversifiedfsi.com Tjennings@diversifiedfsi.com			
Sampler - UPS - Bus - Other:		Cool Intact <input type="checkbox"/> Yes <input checked="" type="checkbox"/> No		(Initials) <u>[Signature]</u>					

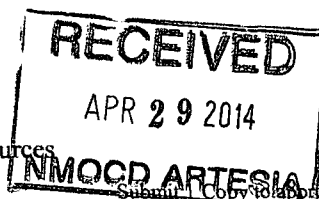
Appendix V

FINAL FORM C-141

Diversified Field Service, Inc.
3412 N. Dal Paso
Hobbs, NM 88240
(575) 964-8394

District I
1625 N. French Dr., Hobbs, NM 88240
District II
811 S. First St., Artesia, NM 88210
District III
1000 Rio Brazos Road, Aztec, NM 87410
District IV
1220 S. St. Francis Dr., Santa Fe, NM 87505

State of New Mexico
Energy Minerals and Natural Resources
Oil Conservation Division
1220 South St. Francis Dr.
Santa Fe, NM 87505



Form C-141
Revised August 8, 2011

Release Notification and Corrective Action

OPERATOR

☐ Initial Report ☒ Final Report

Name of Company: Devon Energy	Contact: Jaime Castillo
Address: PO Box 250Artesia, NM 88211	Telephone No. 575-748-5502
Facility Name: Antares 23 Federal 2H	Facility Type: Oil Well
Surface Owner: Federal	Mineral Owner: Federal
API No. 30-015-41106	

LOCATION OF RELEASE

Unit Letter D	Section 23	Township 19S	Range 31E	Feet from the 180	North/South Line North	Feet from the 225	East/West Line West	County Eddy
------------------	---------------	-----------------	--------------	----------------------	---------------------------	----------------------	------------------------	-------------

Latitude 32.650268330359 Longitude -103.847828029315

NATURE OF RELEASE

Type of Release: Produced Water and Crude	Volume of Release 20bbls	Volume Recovered 15bbls
Source of Release: Flow line	Date and Hour of Occurrence 03/18/14 5:45 PM	Date and Hour of Discovery 03/18/14
Was Immediate Notice Given? <input checked="" type="checkbox"/> Yes <input type="checkbox"/> No <input type="checkbox"/> Not Required	If YES, To Whom? John Barnett-Lease Operator	
By Whom?	Date and Hour 03/18/14 6:00 PM	
Was a Watercourse Reached? <input type="checkbox"/> Yes <input checked="" type="checkbox"/> No	If YES, Volume Impacting the Watercourse.	
If a Watercourse was Impacted, Describe Fully.* NA		
Describe Cause of Problem and Remedial Action Taken.* Surge in pressure caused a rupture in the flow line resulting in a spill of 20bbls of produced fluid, oil and water. Flow line has been repaired and efforts will be made to ensure that the Murphy switches are set at the correct pressures.		
Describe Area Affected and Cleanup Action Taken.* There was an impacted pad area of 6,702 sq. ft. 15bbls of fluids were recovered by a vacuum truck. DFSI was retained to delineate the site. All impacted soils were removed to an NMOCD approved facility.		
I hereby certify that the information given above is true and complete to the best of my knowledge and understand that pursuant to NMOCD rules and regulations all operators are required to report and/or file certain release notifications and perform corrective actions for releases which may endanger public health or the environment. The acceptance of a C-141 report by the NMOCD marked as "Final Report" does not relieve the operator of liability should their operations have failed to adequately investigate and remediate contamination that pose a threat to ground water, surface water, human health or the environment. In addition, NMOCD acceptance of a C-141 report does not relieve the operator of responsibility for compliance with any other federal, state, or local laws and/or regulations.		
Signature: 	OIL CONSERVATION DIVISION	
Printed Name: Sandra Farley	Approved by Environmental Specialist:	
Title: Field Admin Support	Approval Date:	Expiration Date:
E-mail Address: Sandy.Farley@dvn.com	Conditions of Approval:	Attached <input type="checkbox"/>
Date: 04/16/14 Phone: 575-746-5587		

* Attach Additional Sheets If Necessary