



ENVIRONMENTAL PLUS, INC.  
STATE APPROVED LAND FARM AND ENVIRONMENTAL SERVICES

Micro-Blaze

Micro-Blaze Out™

Rec'd  
& PRINTED  
2.4.05  
[Signature]

3 February 2005

Mr. Larry Johnson, Environmental Engineer  
New Mexico Oil Conservation Division  
1625 North French  
Hobbs, New Mexico 88240

Re: Initial C-141 Duke Energy Field Services G-28-4 – Reference #130015  
UL-A (NE¼ of the NE¼) of Section 2, Township 23 South, Range 36 East  
Latitude N 32° 20' 25.042" and Longitude W 103° 13' 40.062"

Dear Mr. Johnson:

Environmental Plus, Inc. (EPI), on behalf of Mr. Mark Owens, Duke Energy Field Services, L.P. (DEFS), submits the attached New Mexico Oil Conservation Division (NMOCD) form C-141 for the above referenced leak site located on land owned by the State of New Mexico, approximately 7.69 miles southwest of Eunice, New Mexico. The United States Geological Survey (USGS) database indicates there is one water supply well located within a one-mile radius of the release site; however, there are no wells located within a 1,000-foot radius of the release site. The USGS database indicates that depth to water for this well is approximately 180 feet below ground surface (bgs). The attached site information and metrics form ranks the site in accordance with the NMOCD Guidelines for Remediation of Leaks, Spills and Releases (August 13, 1993).

A remediation plan will be developed and submitted for NMOCD approval and will address issues identified during delineation of the vertical and horizontal extents of chloride, sulfates, total petroleum hydrocarbons (TPH) and benzene, toluene, ethylbenzene, and total xylenes (BTEX). The contaminated soil is exempt from RCRA 40 CFR Part 261.

If there are any questions please feel free to contact me at (505) 394-3481 or via e-mail at [iolness@hotmail.com](mailto:iolness@hotmail.com) or Mr. Mark Owens at (505) 397-5541 or via e-mail at [mrowens@duke-energy.com](mailto:mrowens@duke-energy.com). All official communication should be addressed to:

Mr. Mark Owens  
Duke Energy Field Services  
1625 West Marland  
Hobbs, New Mexico 88240

Sincerely,

ENVIRONMENTAL PLUS, INC.

Iain Olness, P.G.  
Hydrogeologist

cc: Mark Owens, Duke Energy Field Services, Hobbs, NM  
Lynn Ward, Duke Energy Field Services, Midland, TX  
Steve Weathers, Duke Energy Field Services – Denver, CO  
Polo Rendon, Duke Energy Field Services – Hobbs, NM

Duke 229153  
Incident - n PAC 0603140755  
Application P.P.A.C. 06.03.14.1192  
P.O. Box 4568, 300 West Ave. O  
TELEPHONE 505.394.3481

... EUNICE, NEW MEXICO 88231  
FAX 505.394.2601

ENVIRONMENTAL PLUS, INC.

<b>Duke Energy Field Services Site Information and Metrics</b>		<b>Incident Date:</b> 23 January 2005	<b>NMOCD Notified:</b> 3 February 2005
<b>Site:</b> G-28-4		<b>Assigned Site Reference #:</b> 130015	
<b>Company:</b> Duke Energy Field Services			
<b>Street Address:</b>			
<b>Mailing Address:</b> 1625 West Marland			
<b>City, State, Zip:</b> Hobbs, New Mexico 88240			
<b>Representative:</b> Mark Owens			
<b>Representative Telephone:</b> (505) 397-5541			
<b>Telephone:</b>			
<b>Fluid volume released (bbls):</b> 15 barrels		<b>Recovered (bbls):</b> 10 barrels	
<b>&gt;25 bbls: Notify NMOCD verbally within 24 hrs and submit form C-141 within 15 days.</b> <b>(Also applies to unauthorized releases &gt;500 mcf Natural Gas)</b>			
<b>5-25 bbls: Submit form C-141 within 15 days (Also applies to unauthorized releases of 50-500 mcf Natural Gas)</b>			
<b>Leak, Spill, or Pit (LSP) Name:</b> G-28-4			
<b>Source of contamination:</b> 8" steel line began leaking, probably due to internal corrosion. Line clamp installed, line shut-in and scheduled for replacement.			
<b>Land Owner, i.e., BLM, ST, Fee, Other:</b> State of New Mexico			
<b>LSP Dimensions:</b> 40 feet by 50 feet			
<b>LSP Area:</b> $\approx 2,000 \text{ ft}^2$			
<b>Location of Reference Point (RP):</b>			
<b>Location distance and direction from RP:</b>			
<b>Latitude:</b> N 32° 20' 25.042"			
<b>Longitude:</b> W 103° 13' 40.062"			
<b>Elevation above mean sea level:</b> 3,447			
<b>Feet from South Section Line:</b>			
<b>Feet from West Section Line:</b>			
<b>Location- Unit or ¼:</b> NE¼ of the NE¼		<b>Unit Letter:</b> A	
<b>Location- Section:</b> 2			
<b>Location- Township:</b> T23S			
<b>Location- Range:</b> R36E			
<b>Surface water body within 1000' radius of site:</b> none			
<b>Domestic water wells within 1000' radius of site:</b> none			
<b>Agricultural water wells within 1000' radius of site:</b> none			
<b>Public water supply wells within 1000' radius of site:</b> none			
<b>Depth from land surface to ground water (DG):</b> >150 feet			
<b>Depth of contamination (DC):</b> $\approx 5$ feet			
<b>Depth to ground water (DG – DC = DtGW):</b> >100 feet			
<b>1. Ground Water</b>		<b>2. Wellhead Protection Area</b>	
If Depth to GW <50 feet: <i>20 points</i>		If <1000' from water source, or, <200' from private domestic water source: <i>20 points</i>	
If Depth to GW 50 to 99 feet: <i>10 points</i>		If >1000' from water source, or, >200' from private domestic water source: <i>0 points</i>	
If Depth to GW >100 feet: <i>0 points</i>			
<b>Ground water Score =</b> 0		<b>Wellhead Protection Area Score =</b> 0	
<b>Site Rank (1+2+3) =</b> 0		<b>Surface Water Score =</b> 0	
<b>Total Site Ranking Score and Acceptable Concentrations</b>			
<b>Parameter</b>	<b>&gt;19</b>	<b>10-19</b>	<b>0-9</b>
Benzene <sup>1</sup>	10 ppm	10 ppm	10 ppm
BTEX <sup>1</sup>	50 ppm	50 ppm	50 ppm
TPH	100 ppm	1,000 ppm	5,000 ppm
<sup>1</sup> 100 ppm field VOC headspace measurement may be substituted for lab analysis			

District I  
1625 N. French Dr., Hobbs, NM 88240  
District II  
1301 W. Grand Avenue, Artesia, NM 88210  
District III  
1000 Rio Brazos Road, Aztec, NM 87410  
District IV  
1220 S. St. Francis Dr., Santa Fe, NM 87505

State of New Mexico  
Energy Minerals and Natural Resources  
Oil Conservation Division  
1220 South St. Francis Dr.  
Santa Fe, NM 87505

Form C-141  
Revised October 10, 2003

Submit 2 Copies to appropriate  
District Office in accordance  
with Rule 116 on back  
side of form

## Release Notification and Corrective Action

OPERATOR

☒ Initial Report ☐ Final Report

<b>Name of Company:</b> Duke Energy Field Services	<b>Contact:</b> Mark Owens
<b>Address:</b> 1625 West Marland, Hobbs, NM 88240	<b>Telephone No.:</b> (505) 397-5541
<b>Facility Name:</b> G-28-4	<b>Facility Type:</b> 8" steel pipeline
<b>Surface Owner:</b> State of New Mexico	<b>Mineral Owner:</b>
<b>Lease No.:</b>	

## LOCATION OF RELEASE

Unit Letter	Section	Township	Range	Feet from the	North/South Line	Feet from the	East/West Line	County
A	2	23 S	36 E					Lea

**Latitude:** N 32° 20' 25.042" **Longitude:** W 103° 13' 40.062"

## NATURE OF RELEASE

<b>Type of Release:</b> Natural Gas Pipeline Fluids	<b>Volume of Release:</b> 15 barrels	<b>Volume Recovered:</b> 10 barrels
<b>Source of Release:</b> 8" low-pressure steel pipeline	<b>Date and Hour of Occurrence:</b> 23 January 2005	<b>Date and Hour of Discovery:</b> 23 January 2005
<b>Was Immediate Notice Given?</b> <input type="checkbox"/> Yes <input type="checkbox"/> No <input checked="" type="checkbox"/> Not Required	<b>If YES, To Whom?</b>	
<b>By Whom?</b>	<b>Date and Hour</b>	
<b>Was a Watercourse Reached?</b> <input type="checkbox"/> Yes <input checked="" type="checkbox"/> No	<b>If YES, Volume Impacting the Watercourse.</b>	
<b>If a Watercourse was Impacted, Describe Fully.*</b> Not Applicable		
<b>Describe Cause of Problem and Remedial Action Taken.*</b> 8" steel line began leaking, probably due to internal corrosion. A line clamp was installed and the line shut-in until it can be replaced with polyethylene.		
<b>Describe Area Affected and Cleanup Action Taken.*</b> The affected area consists of approximately 2,000 square feet of pasture land leased by B. W. Dinwiddie. A vacuum truck was utilized to pick up the free liquids. A total of 10 barrels of NGPF was recovered. The leak origin was excavated and a clamp installed. After the clamp had been installed, the excavation was backfilled and the release area was back dragged to "blend" the soil until such time that remedial activities can be completed. The line was shut-in and is currently scheduled for replacement.		
I hereby certify that the information given above is true and complete to the best of my knowledge and understand that pursuant to NMOCD rules and regulations all operators are required to report and/or file certain release notifications and perform corrective actions for releases which may endanger public health or the environment. The acceptance of a C-141 report by the NMOCD marked as "Final Report" does not relieve the operator of liability should their operations have failed to adequately investigate and remediate contamination that pose a threat to ground water, surface water, human health or the environment. In addition, NMOCD acceptance of a C-141 report does not relieve the operator of responsibility for compliance with any other federal, state, or local laws and/or regulations.		
<b>Signature:</b>		<b>OIL CONSERVATION DIVISION</b>
<b>Printed Name:</b> Mark Owens		<b>Approved by District Supervisor:</b>
<b>Title:</b> Construction Maintenance Supervisor	<b>Approval Date:</b>	<b>Expiration Date:</b>
<b>E-mail Address:</b> mrowens@duke-energy.com	<b>Conditions of Approval:</b>	
<b>Date:</b>	<b>Phone:</b>	<b>Attached</b> <input type="checkbox"/>

\* Attach Additional Sheets If Necessary

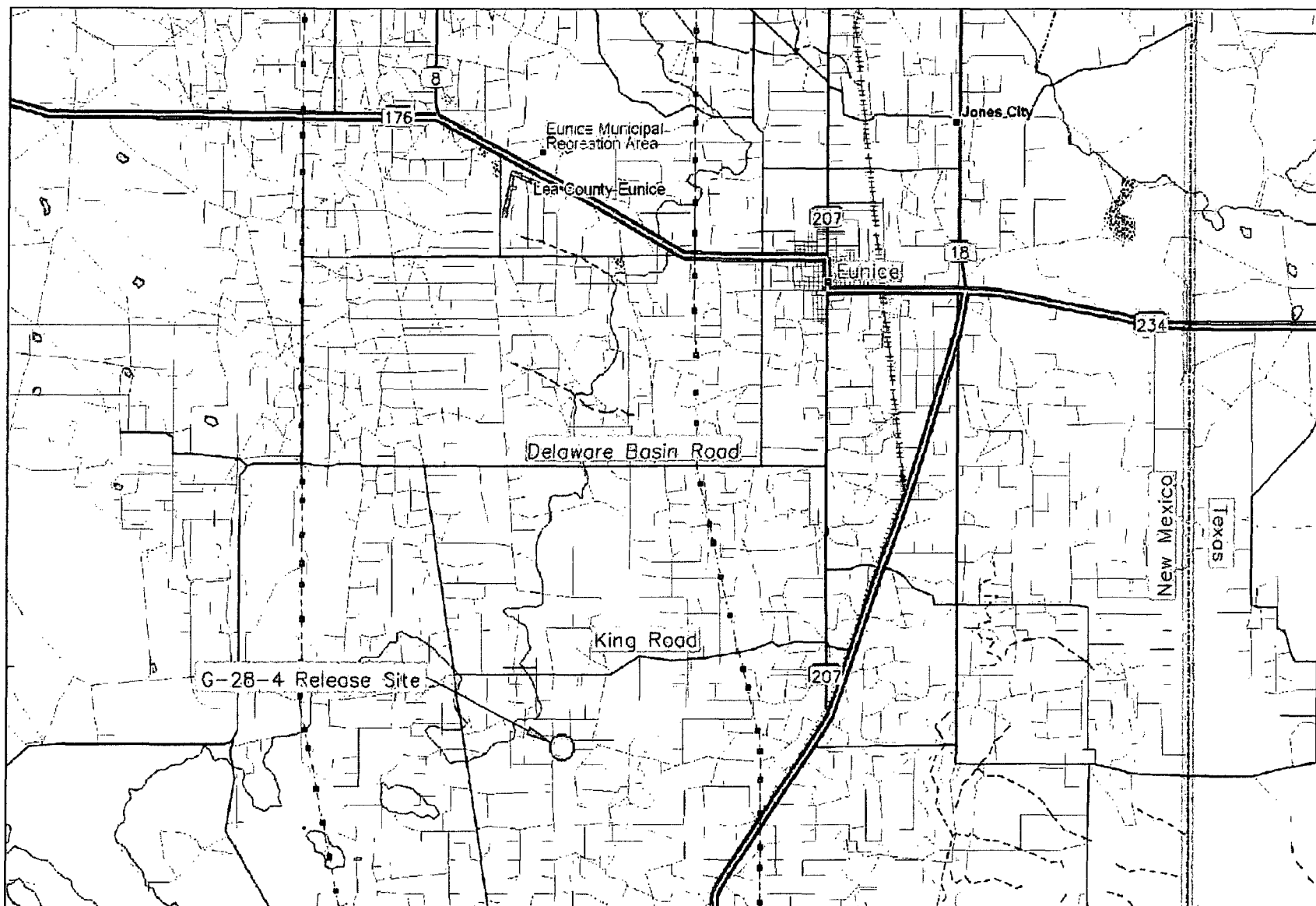


Figure 1  
Area Map  
Duke Energy Field Services  
G-28-4

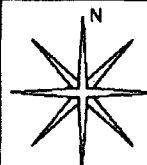
Lea County, New Mexico  
NE 1/4 of the NE 1/4, Sec. 2, T23S, R36E  
N 32° 20' 25.0" W 103° 13' 40.0"  
Elevation: 3,447 feet amsl

DWG By: Iain Olness  
February 2005

REVISED:



SHEET  
1 of 1



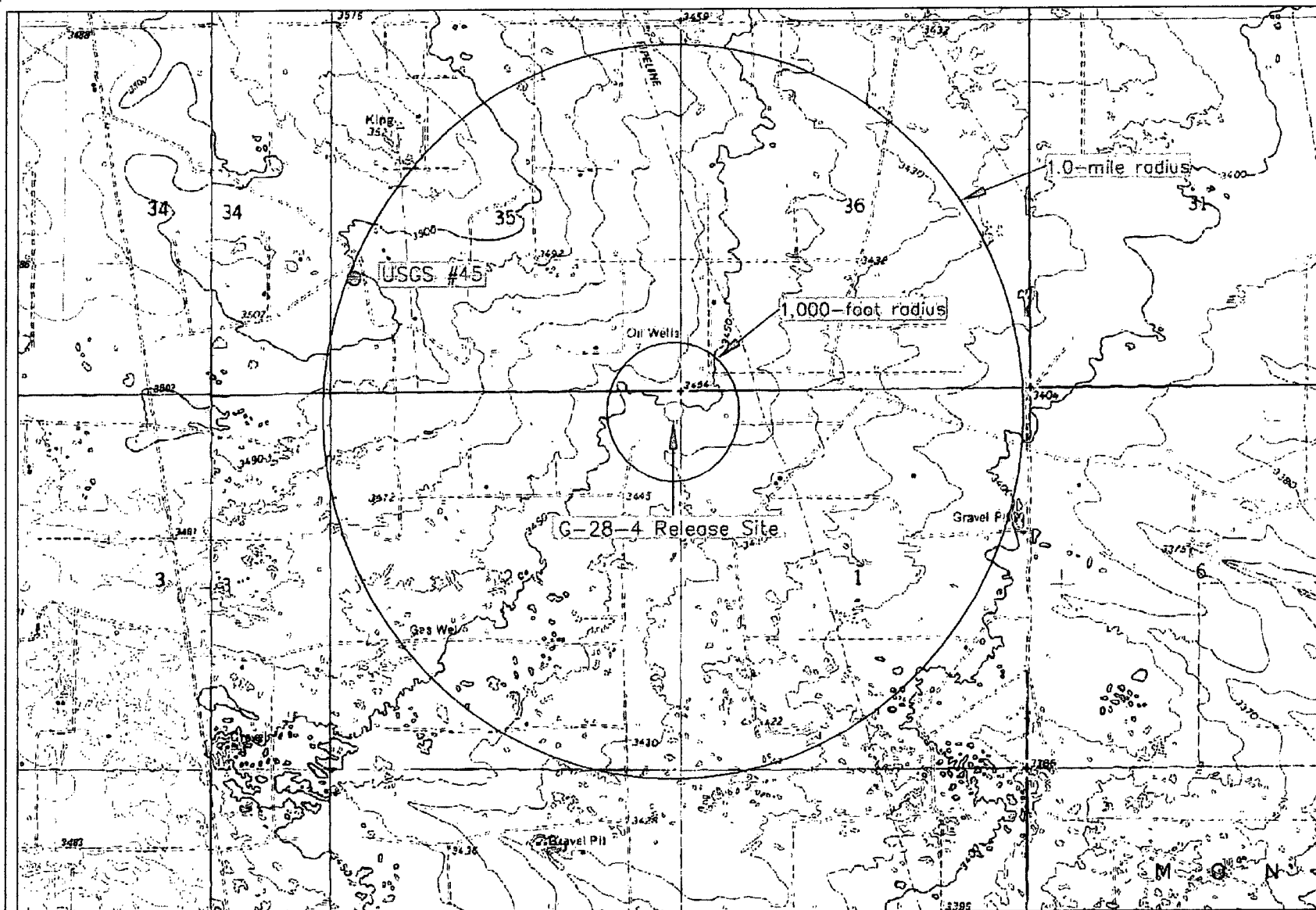
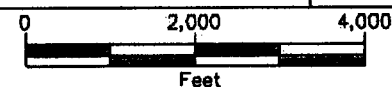


Figure 2  
Site and Well Location Map  
Duke Energy Field Services  
G-28-4

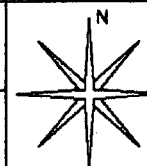
Lea County, New Mexico  
NE 1/4 of the NE 1/4, Sec. 2, T23S, R36E  
N 32° 20' 25.0" W 103° 13' 40.0"  
Elevation: 3,447 feet amsl

DWG By: Iain Olness  
February 2005

REVISED:



SHEET  
1 of 1



Duke Energy  
Field Services

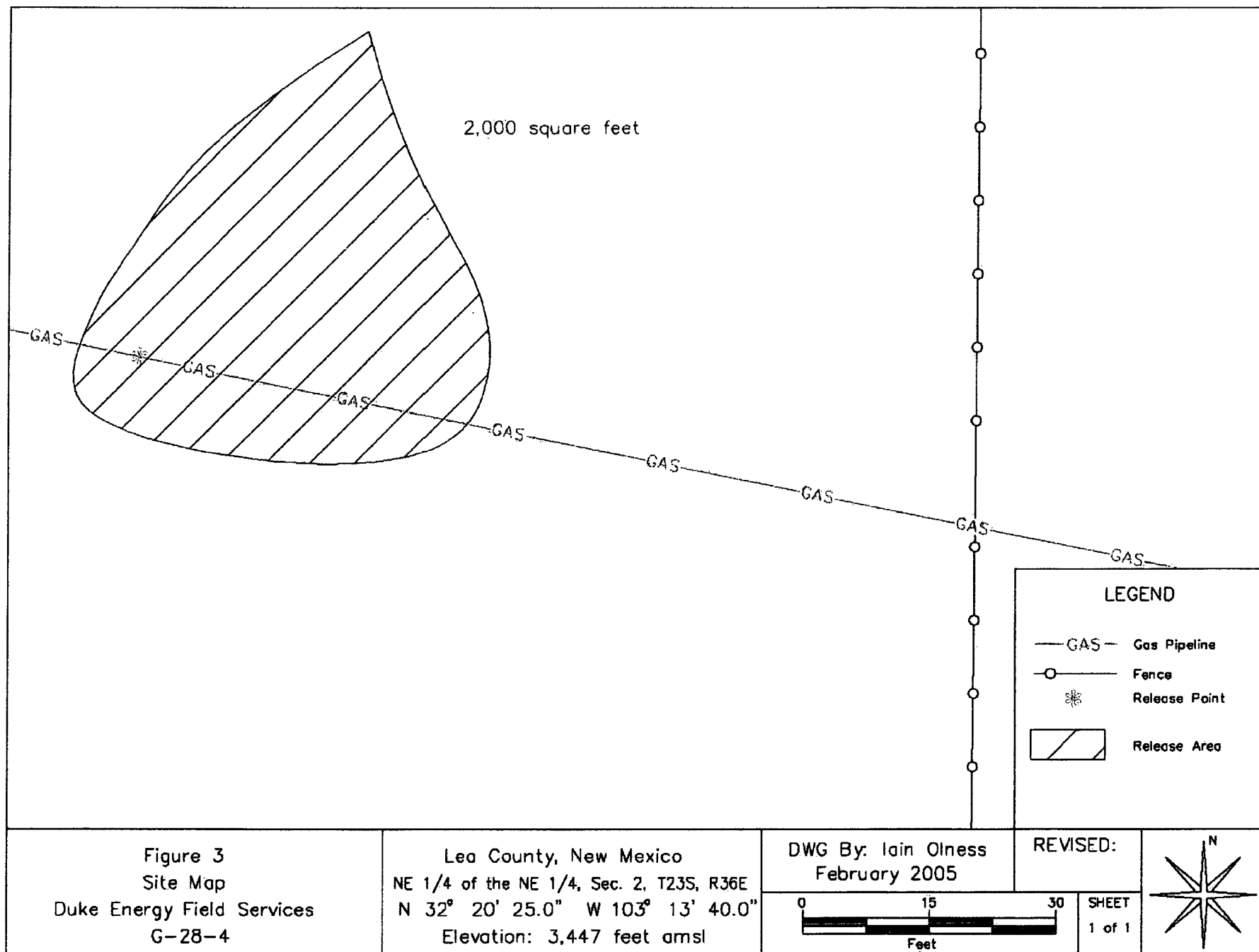


TABLE 1

## WELL INFORMATION REPORT\*

Duke Energy Field Services G-28-4 - Ref #130015

Well Number	Diversion <sup>A</sup>	Owner	Use	Source	Twsp	Rng	Sec q q q	Latitude	Longitude	Date Measured	Surface Elevation <sup>B</sup>	Depth to Water (ft bgs)
USGS #1					23 S	36 E	04 4 2 4			8-Mar-96	3,485	164.2
CP 00738	0	Dinwiddie Cattle Company	STK		23 S	36 E	14 3 4	N 32° 17' 49.46"	W 103° 14' 22.88"		3,360	
CP 00737	0	Sun Exploration and Production	PRO	Shallow	23 S	36 E	15 3 1 4	N 32° 18' 2.64"	W 103° 15' 39.71"	24-Aug-88	3,410	
CP 00603	3	U.R. Cattle Company	DOM	Shallow	23 S	36 E	15 4 1 3	N 32° 18' 2.6"	W 103° 15' 8.98"	16-Feb-80	3,380	149
USGS #2					23 S	36 E	15 4 4 1			17-Dec-70	3,370	145.91
USGS #3					23 S	36 E	15 4 4 1			6-Mar-96	3,370	144.29
CP 00558	3	Ross L. Robinson, U.R. Cattle Co.	STK	Shallow	23 S	36 E	16 3 3 3	N 32° 17' 49.67"	W 103° 16' 41.34"	22-Jul-76	3,440	220
USGS #4					23 S	36 E	16 3 4 3			17-Dec-70	3,450	261.86
USGS #5					23 S	36 E	16 3 4 3			14-May-91	3,450	411.5
CP 00925	141.14	Energex Resources Corp.	SRO		23 S	36 E	22 4 4 4	N 32° 16' 57.18"	W 103° 14' 53.64"		3,400	
USGS #6					23 S	36 E	22 3 4 4			1-Dec-53	3,420	188.57
USGS #7					23 S	36 E	23 1 1 4			17-Dec-70	3,370	141.23
USGS #8					23 S	36 E	23 2 2 1			17-Dec-70	3,355	132.39
USGS #9					23 S	36 E	26 3 3 3			28-Feb-96	3,360	140.9
CP 00109	3	Deep Wells Ranch, Inc.	STK	Shallow	23 S	36 E	31 2 1 3	N 32° 15' 52.14"	W 103° 18' 13.55"	15-Jun-66	3,440	178
CP 00459	3	Deep Wells Ranch, Inc.	STK		23 S	36 E	31 3 3 3	N 32° 15' 12.93"	W 103° 18' 43.92"	19-Mar-68	3,465	200
USGS #10					23 S	36 E	31 2 1 4			21-Jan-76	3,435	174.93
USGS #11					23 S	36 E	31 2 1 4			7-Mar-96	3,435	174.14
USGS #12					23 S	36 E	31 2 3 3				3,445	
USGS #13					23 S	36 E	35 2 1 1			28-Feb-96	3,340	122.43
CP 00497	3	El Paso Natural Gas Company	EXP	Shallow	23 S	36 E	36 4 3 3	N 32° 15' 12.37"	W 103° 13' 6.12"	18-Apr-71	3,330	133
CP 00512	3	El Paso Natural Gas Company	EXP	Shallow	23 S	36 E	36 1 3 4	N 32° 15' 38.59"	W 103° 13' 36.84"	1-Dec-72	3,335	128
CP 00621	3	El Paso Natural Gas Company	EXP	Shallow	23 S	36 E	36 2 2 3	N 32° 15' 51.58"	W 103° 12' 50.72"	8-Jul-80	3,325	127
CP 00634	3	El Paso Natural Gas Company	EXP	Shallow	23 S	36 E	36 1 2 1	N 32° 15' 51.64"	W 103° 13' 21.46"	15-Jun-81	3,335	125
CP 00651	3	El Paso Natural Gas Company	IND	Shallow	23 S	36 E	36 1 3 2	N 32° 15' 38.59"	W 103° 13' 36.84"	1-Jul-82	3,340	123
CP 00682	3	El Paso Natural Gas Company	EXP		23 S	36 E	36 1 2 4	N 32° 15' 51.64"	W 103° 13' 21.46"	15-Sep-85	3,335	
USGS #14					23 S	36 E	36 1 3 1			20-Jan-76	3,330	122.58
USGS #15					23 S	36 E	36 3 1 4			22-Feb-96	3,340	120.92
USGS #16					23 S	36 E	36 3 4 1			17-Dec-70	3,335	136.21
USGS #17					23 S	36 E	36 3 4 2			20-Oct-65	3,335	142.17
CP 00763 EXP	0	Chevron USA, Inc.	SAN	Shallow	22 S	36 E	01 3 2 2	N 32° 25' 1.46"	W 103° 13' 21.77"	11-Oct-91	3,500	137
USGS #18					22 S	36 E	01 3 3 3			12-Nov-53	3,495	111.24
USGS #19					22 S	36 E	02 1 4 4				3,550	
USGS #20					22 S	36 E	02 3 2 3				3,535	
USGS #21					22 S	36 E	02 4 4 4				3,500	
USGS #22					22 S	36 E	02 4 4 2			20-Jan-76	3,500	118.48
USGS #23					22 S	36 E	02 4 4 4				3,500	
USGS #24					22 S	36 E	04 2 2 2			3-Apr-68	3,560	702.23
CP 00727	3	Dasco Land Corporation	STK	Shallow	22 S	36 E	05 2 3 1	N 32° 25' 14.38"	W 103° 17' 12.71"	26-Apr-88	3,600	
CP 00469	3	W. T. Tivis, Jr.	STK		22 S	36 E	06 3 2 1	N 32° 25' 1.55"	W 103° 18' 29.6"	7-Feb-69	3,585	195
USGS #25					22 S	36 E	06 3 2 1			14-Feb-96	3,585	179.53
USGS #26					22 S	36 E	06 4 1 2			1-May-91	3,580	171.04
CP 00476 EXP		Ross Robinson	STK		22 S	36 E	07 2 3 1	N 32° 24' 22.28"	W 103° 18' 14.09"		3,595	
USGS #27					22 S	36 E	09 3 4 1			1-May-91	3,560	171.75
USGS #28					22 S	36 E	09 3 4 1			3-Dec-70	3,560	172.27

Duke Energy  
Field Services

TABLE 1

## WELL INFORMATION REPORT\*

Duke Energy Field Services G-28-4 - Ref #130015

Well Number	Diversion <sup>A</sup>	Owner	Use	Source	Twsp	Rng	Sec q q q	Latitude	Longitude	Date Measured	Surface Elevation <sup>B</sup>	Depth to Water (ft bgs)
USGS #29					22 S	36 E	09 3 4 1			3-Dec-70	3,560	178.05
L 11013	3	Dasco Land Corporation	STK		22 S	36 E	10 3 3 3	N 32° 23' 56.1"	W 103° 15' 40.14"		3,545	
USGS #30					22 S	36 E	11 2 1 4				3,525	
USGS #31					22 S	36 E	11 2 2 4				3,505	
USGS #32					22 S	36 E	11 2 2 3			3-Dec-70	3,520	125.42
USGS #33					22 S	36 E	12 3 1 1			15-Feb-96	3,475	124.13
USGS #34					22 S	36 E	13 2 2 2			20-Jan-76	3,450	23.41
CP 00070 2	3	McVay Drilling Company	STK	Shallow	22 S	36 E	16 1 2 2	N 32° 23' 42.95"	W 103° 16' 26.28"	5-Oct-72	3,565	170
USGS #35					22 S	36 E	16 2 1 1			15-Feb-96	3,450	173.28
USGS #36					22 S	36 E	16 2 1 1			7-Mar-86	3,450	174.09
USGS #37					22 S	36 E	17 1 4 1			3-Dec-70	3,565	484.06
CP 00485 EXP		El Paso Natural Gas Company	NON		22 S	36 E	22 1 3 3	N 32° 22' 37.79"	W 103° 15' 40.09"		3,515	
CP 00609	3	U.R. Cattle Company	DOM		22 S	36 E	22 4 3 1	N 32° 22' 11.77"	W 103° 15' 9.23"	28-Jun-80	3,565	22
USGS #38					22 S	36 E	25 4 3 4			15-Feb-96	3,430	117.83
USGS #39					22 S	36 E	25 4 3 4			9-Dec-70	3,430	121.52
USGS #40					22 S	36 E	25 4 3 4			21-Oct-65	3,430	118.07
USGS #41					22 S	36 E	26 4 1 4				3,480	
CP 00575	3	Millard Deck	STK	Shallow	22 S	36 E	27 4 3 3	N 32° 21' 19.49"	W 103° 15' 9.39"	13-Nov-78	3,505	160
USGS #42					22 S	36 E	27 2 2 2			21-Jan-76	3,500	166.68
USGS #43					22 S	36 E	27 4 4 4			21-Feb-96	3,515	188.39
USGS #44					22 S	36 E	33 2 3 2			20-Feb-96	3,475	474.08
USGS #45					22 S	36 E	35 3 1 3			15-Feb-96	3,490	180.81

\* = Data obtained from the New Mexico Office of the State Engineer Website ([http://iwaters.ose.state.nm.us:7001/iWATERS/wr\\_RegisServlet1](http://iwaters.ose.state.nm.us:7001/iWATERS/wr_RegisServlet1)) and USGS Database.

Shaded well information indicates well location shown on Figure 2

<sup>A</sup> = in acre feet per annum

<sup>B</sup> = Interpolated from USGS Topographical Map

IND = Industrial

STK = Livestock Watering

CLW = Change Location of Well (Ground)

EXP = Expired

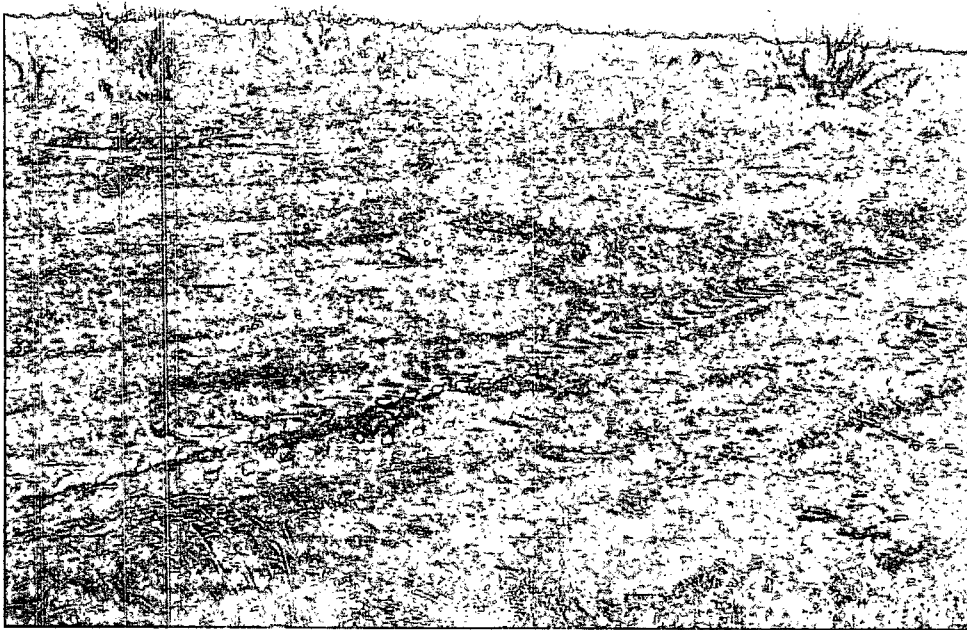
(quarters are 1=NW, 2=NE, 3=SW, 4=SE)

(quarters are biggest to smallest - X Y are in Feet - UTM are in Meters)





Photograph #1: Release area, looking easterly.



Photograph #2: Release Area, looking northeasterly.