**HARVARD PETROLEUM CORPORATION**

200 East Second Street • P.O. Box 936 • Roswell, NM 88202-0936 • (505) 623-1581 • Fax (505) 622-8006

**Date:** 2/8/06**To:** Daniel Sanchez**Fax Number:** 505-476-3462**From:** Jeff Harvard**Number of Pages:** (Includes cover sheet) 5**Messages:**

Daniel,

Thank you for your assistance yesterday. Following is a copy of my letter to Mike, a plat and two maps showing Harvard's acreage and the archeological problems. The one map shows our first location attempt that had to be cancel due to arch problems. I have sent Mike's letter along with the full APD and arch report by two day UPS so he will have it on his desk when he gets in next Monday. We are expecting to have a rig in a couple of weeks.

Thank you for your assistance.

If you have any questions, or need anything further, please let me know.

Sincerely,

Jeff Harvard  
Harvard Petroleum Corporation  
PO Box 936  
Roswell, NM 88202-0936  
jharvard@hpcnm.com

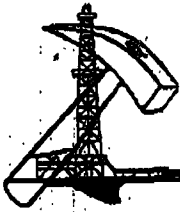
(505) 623-1581 #102  
(505) 626-7938 cell  
(505) 622-8006 fax

**CONFIDENTIALITY NOTICE**

THE DOCUMENTS ACCOMPANYING THIS FACSIMILE TRANSMISSION CONTAIN CONFIDENTIAL INFORMATION BELONGING TO THE SENDER WHICH IS LEGALLY PRIVILEGED. THE INFORMATION IS INTENDED ONLY FOR THE USE OF THE INDIVIDUAL OR ENTITY NAMED ABOVE. IF YOU ARE NOT THE INTENDED RECIPIENT, YOU ARE HEREBY NOTIFIED THAT ANY DISCLOSURE, COPYING, DISTRIBUTION, OR THE TAKING OF ANY ACTION IN RELIANCE ON THE CONTENTS OF THIS FACSIMILE INFORMATION IS STRICTLY PROHIBITED. IF YOU HAVE RECEIVED THIS FACSIMILE IN ERROR, PLEASE IMMEDIATELY NOTIFY US BY TELEPHONE (COLLECT) TO ARRANGE FOR RETURN OF THE ORIGINAL DOCUMENT TO US.

**FACSIMILE OPERATOR**

**IF PROBLEMS OCCUR DURING TRANSMISSION OR IF PAGES ARE MISSING, PLEASE CALL: 505-623-1581.**

**HARVARD PETROLEUM CORPORATION**

200 East Second Street • P.O. Box 936 • Roswell, NM 88202-0936 • (505) 623-1581 • Fax (505) 622-8006

February 8, 2006

NM Oil Conservation Division  
1220 South St. Francis Drive  
Santa Fe, NM 87505

Attn: Mike Stogner

Re: Federal "00" #3  
1838' FNL & 2406' FEL  
Sec 18-21S-27E  
Eddy County, NM

Dear Mr. Stogner:

I have enclosed a copy of the Federal APD on the above well. As can see, the above location is non-standard due to its proximity to the section center line. Harvard Petroleum Corporation and its partners have the same ownership in 160 acres being the E/2 NW/4 and the W/2 NE/4 under a farmout from Mewbourne Oil Company. We have spent over a year trying to find an acceptable location in the S/2 of our acreage due to archeological artifacts throughout the acreage. After much time and expense searching the archeologists were able to locate and get BLM agreement on the above location with a very small fenced pad. Because of the archeological issues and the fact that it is the same lease with the same ownership, I am requesting approval of the above non-standard location.

If you need anything further, please do not hesitate to contact me at the above or by email at [jharvard@hpcnm.com](mailto:jharvard@hpcnm.com).

Sincerely,

Harvard Petroleum Corporation

Jeff Harvard  
President

Enclosures

1225 N. French Dr., Niles, NM 88440

511 N. Main St., Artesia, NM 88210

1000 N. State St., Aztec, NM 87410

2040 South Pacheco, Santa Fe, NM 87505

State of New Mexico  
Energy, Minerals & Natural Resources

## OIL CONSERVATION DIVISION

2040 South Pacheco  
Santa Fe, N M 87505

Form C-102

Revised March 17, 1999

Submit to Appropriate District Office

State Lease - 4 Copies

Fee Lease - 3 Copies

☐ AMENDED REPORT

## WELL LOCATION AND ACREAGE DEDICATION PLAT

API Number	Pool Code	Pool Name Wildcat Bone Spring
Property Code	Property Name FEDERAL "00"	Well Number 3
COND No. 10155	Operation Name HARVARD PETROLEUM	Elevation 9226

## Surface Location

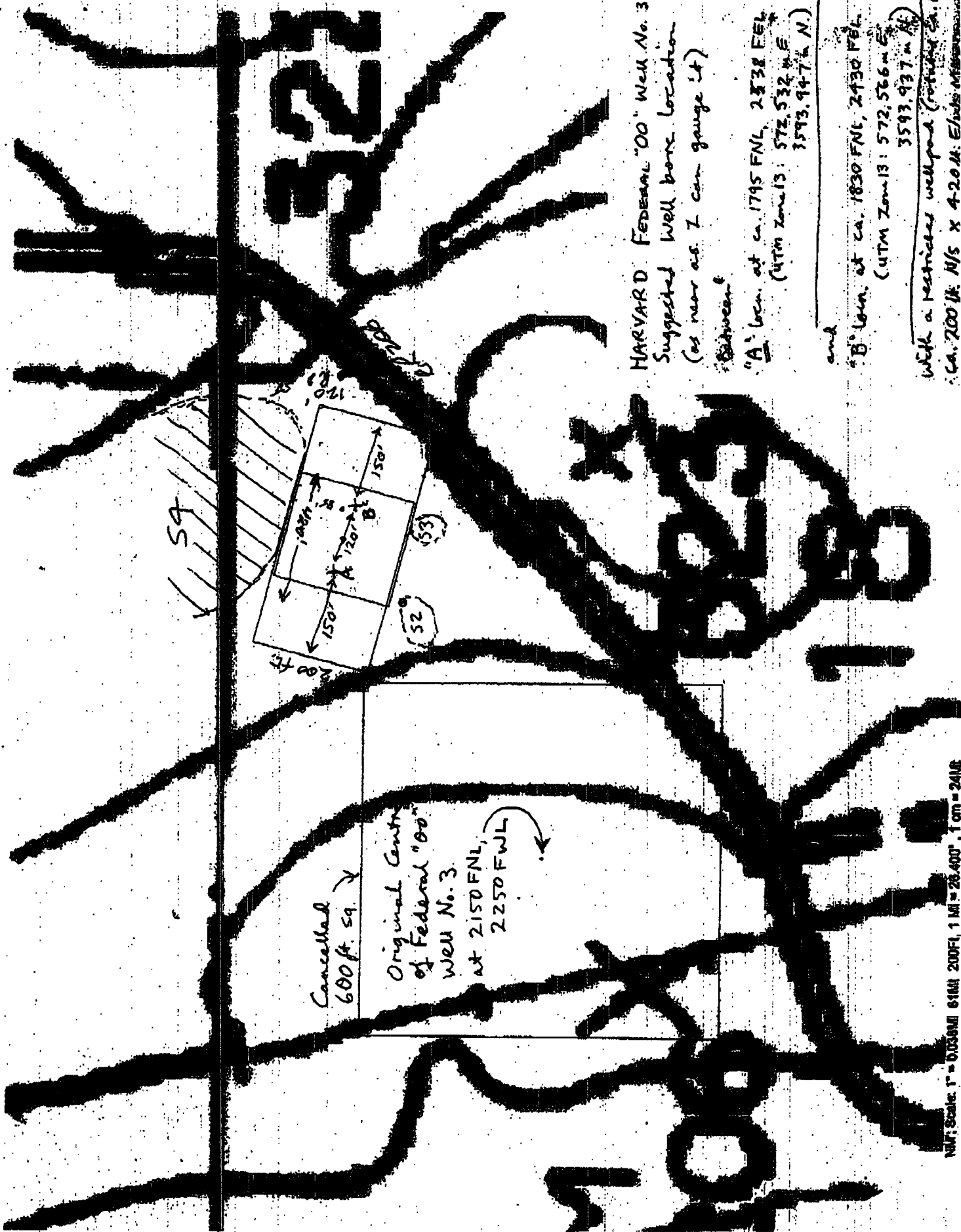
UL or Lot No. G	Section 18	Township 21-S	Range 27-E	Lot No.	Feet from the 1838	North/South line NORTH	Feet from the 2406	East/West line EAST	County BDDY
--------------------	---------------	------------------	---------------	---------	-----------------------	---------------------------	-----------------------	------------------------	----------------

## Bottom Hole Location If Different From Surface

UL or Lot No.	Section	Township	Range	Lot No.	Feet from the	North/South line	Feet from the	East/West line	County
Dedicated Acres	Joint or Infr	Consolidation Code	Order No.						

NO ALLOWABLE WILL BE ASSIGNED TO THIS COMPLETION UNTIL ALL INTEREST HAVE BEEN CONSOLIDATED OR A NON-STANDARD UNIT HAS BEEN APPROVED BY THE DIVISION

	<b>OPERATOR CERTIFICATION</b> <small>I HEREBY CERTIFY THAT THE INFORMATION CONTAINED IN THIS PLAT IS TRUE AND CORRECT TO THE BEST OF MY KNOWLEDGE AND BELIEF.</small>	
	Signature <i>George R. Smith</i> Printed Name <b>George R. Smith</b> Title <b>Agent</b>	
	Date <b>March 22, 2005</b>	
	<b>SURVEYOR CERTIFICATION</b> <small>I HEREBY CERTIFY THAT THE FINAL LOCATION OF THIS WELL IS AS SHOWN ON THIS PLAT AND THAT I AM AN AGENT OF THE DIVISION OF OIL CONSERVATION AND THAT THE PLAT IS TRUE AND CORRECT TO THE BEST OF MY KNOWLEDGE AND BELIEF.</small>	
MARCH 22, 2005 Date of Survey Registered Professional Surveyor  NM License # 5412 Certificate Number		



HARVARD FEDERAL "00" Well No. 3.  
Suggested Well bore location  
(as near as I can gauge it)

"A" locn. at ca. 1795 FNL, 2338 FEL  
(UTM Zone 13: 572,532 m E  
3593,947 m N.)

and  
"B" locn. at ca. 1830 FNL, 2430 FEL  
(UTM Zone 13: 572,566 m E  
3593,937 m N.)

With a restricted wellpad (radius ca. 15')  
CA. 200' H/S x 4.20' E/W

Cancelled  
600 ft sq. ✓  
Original Centre  
of Federal "00"  
Well No. 3.  
at 2150 FNL,  
2250 FWL

