

3R-453

**Site Investigation
Report**

**Date:
7/2/2012**



Animas Environmental Services, LLC

www.animasenvironmental.com

624 E. Comanche
Farmington, NM 87401
505-564-2281

Durango, Colorado
970-403-3274

Prepared for:

Tsosie Lewis, CEO
Navajo Agricultural Products Industry
P.O. Drawer 1318
Farmington, New Mexico 87499

Steve Austin
Navajo Environmental Protection Agency
P.O. Box 1999
Shiprock, New Mexico 87420

Site Investigation Report
Enterprise Products Company
Federal 2E #1
March 2012 Pipeline Release
SW¼ NE¼, Section 2, T27N, R12W
San Juan County, New Mexico

July 2, 2012

Prepared on behalf of:

Enterprise Products Company
614 Reilly Avenue
Farmington, New Mexico 87401

Prepared by:

Animas Environmental Services, LLC
624 E. Comanche
Farmington, New Mexico 87401

District Copy
For Scanning Only
Has NOT been processed.

Contents

1.0	Introduction	1
1.1	Site Location.....	1
1.2	Release Ranking	1
1.3	Release Information.....	2
1.4	Initial Release Assessment.....	2
2.0	Site Investigation – March 2012.....	3
2.1	Notifications and Health and Safety Plans.....	3
2.1.1	<i>Permits and Access Agreements</i>	3
2.1.2	<i>Utilities Notification</i>	3
2.1.3	<i>Project Notification</i>	3
2.1.4	<i>Health and Safety Plan</i>	3
2.2	Soil Borings.....	4
2.2.1	<i>Drilling Methods</i>	4
2.2.2	<i>Soil Sample Collection</i>	4
2.2.3	<i>Soil Field Screening</i>	4
2.2.4	<i>Soil Laboratory Analyses</i>	5
2.3	Groundwater Sampling.....	5
2.3.1	<i>Laboratory Analyses</i>	5
3.0	Site Investigation Results	5
3.1	Soil.....	5
3.2	Groundwater.....	6
4.0	Conclusions and Recommendations	6
5.0	Certification.....	7
6.0	References.....	8

Figures

Figure 1.	Topographic Site Location Map
Figure 2.	Aerial Site Map
Figure 3.	Soil Boring Locations and Sample Results, March 2012
Figure 4.	Cross Sections A-A' and B-B'

Tables

Table 1.	Summary of Soil Laboratory Analytical Results
Table 2.	Summary of Groundwater Laboratory Analytical Results

Appendices

Appendix A.	Soil Boring Logs
Appendix B.	Laboratory Analytical Reports

1.0 Introduction

Animas Environmental Services, LLC (AES), on behalf of Enterprise Products Company, Inc. (Enterprise), has prepared this Site Investigation Report for the March 2012 Federal 2E #1 pipeline release. AES previously submitted an *Initial Release Assessment and Abatement Report and Release Investigation Workplan* dated March 28, 2012.

1.1 Site Location

The release is located approximately 11 miles southeast of Farmington, New Mexico, within Navajo Agricultural Products Industry's (NAPI) Field 409A, which is under jurisdiction of the Navajo Nation Environmental Protection Agency (NNEPA). The release is located within the SW $\frac{1}{4}$ NE $\frac{1}{4}$, Section 2, T27N, R12W, San Juan County, New Mexico. Latitude and longitude of the release were recorded as N36.60681 and W108.08013, respectively, and site elevation is approximately 5,977 feet above mean sea level as determined by Global Positioning System (GPS). A topographic site location map is included as Figure 1, and an aerial map showing the release location is included as Figure 2.

1.2 Release Ranking

The NNEPA does not have codified regulations or guidelines for oil and gas release response protocol. NNEPA requested that Enterprise follow the release protocol written in the New Mexico Oil Conservation Division (NMOCD) *Guidelines for Remediation of Leaks, Spills, and Releases*. October 13, 1993.

Prior to beginning the site investigation, the NMOCD database was reviewed, and no records for nearby well locations with similar surface elevations were found to assist in determining release ranking. Additionally, the New Mexico Office of the State Engineer (NMOSE) database was reviewed for the presence of nearby water wells, and no nearby registered water well records were located.

Once on-site, AES personnel assessed the NMOCD ranking criteria using topographical interpretation, GPS elevation readings, and visual reconnaissance. Based on field observations during the site investigation, the depth of groundwater ranges from 27 to 29 feet below ground surface (bgs). Distance to the nearest surface water body, a NAPI irrigation canal, is approximately 2,515 feet west of the release location. The location was assessed a NMOCD ranking score of 20.

1.3 Release Information

On March 15, 2012, petroleum hydrocarbon contaminated surface soil was discovered within NAPI Field 409A by NAPI personnel while preparing the field for planting. On the same day, Enterprise personnel responded to isolate the suspected pipeline, which was identified as a 4-inch diameter tie to the Federal 2E #1 natural gas well, operated by Energen Resources Corporation. The release was found to have resulted from two small corrosion holes in the pipeline.

1.4 Initial Release Assessment

On March 21 to 23, 2012, Enterprise contractors completed initial pipeline repairs. During the excavation work, AES collected field screening samples to evaluate the level of soil contamination present along the walls and base of the excavation. Additionally, a test hole was excavated within the pipeline trench to a maximum depth of 23 feet bgs, from which a soil sample was collected for field screening and laboratory analysis.

Based on a high field screening value of 2,984 parts per million (ppm) for volatile organic compounds (VOCs) from the test hole along with excavation safety issues, it was decided to suspend the excavation and develop an alternative method of release mitigation and investigation. The following summarizes the alternative actions that were presented to the NNEPA in the AES report dated March 28, 2012.

1. All hydrocarbon impacted soil to 12 feet bgs (below crop rooting depths) to be excavated and properly disposed of;
2. The excavation should be backfilled with clean fill obtained from NAPI;
3. The vertical and horizontal extent of the release will be determined through the installation of soil borings; and
4. Soil vapor extraction will be evaluated as a possible mitigation strategy.

Based on AES's recommendations and subsequent to NNEPA approval, on March 26 and 27, 2012, Enterprise contractors made the final repairs to the pipeline, excavated and transported hydrocarbon contaminated soil off-site to an authorized disposal facility, and backfilled the excavation. The final excavation dimensions measured approximately 16 feet by 16 feet by 12 feet deep, which encompassed the 23 foot deep test hole. Approximately 120 cubic yards of hydrocarbon contaminated soil were transported by Enterprise contractors to the Envirotech Landfarm, near Bloomfield, New Mexico, for disposal. All backfill material was obtained from NAPI.

2.0 Site Investigation – March 2012

On March 30 and 31, 2012, AES completed a site investigation with the purpose of delineating the full extent of petroleum hydrocarbon impact on subsurface soils and groundwater resulting from the release. The investigation included the installation of five soil borings and the collection of soil and groundwater samples in accordance with U.S. Environmental Protection Agency (USEPA) Environmental Response Team's Standard Operating Procedures (SOPs) and applicable American Society of Testing and Materials (ASTM) standards.

2.1 *Notifications and Health and Safety Plans*

2.1.1 **Permits and Access Agreements**

Enterprise obtained necessary approval from NAPI prior to implementation of the investigation.

2.1.2 **Utilities Notification**

AES utilized the New Mexico One-Call system to identify and mark all underground utilities at the site before initiating the investigation.

2.1.3 **Project Notification**

AES notified Aaron Dailey and Shane Cooley of Enterprise by telephone 48 hours prior to beginning the investigation. AES also notified Tsosie Lewis of NAPI and Steve Austin with NNEPA.

2.1.4 **Health and Safety Plan**

AES has a company health and safety plan in place, and each employee is required to complete a health and safety orientation prior to participating in field operations for the first time. All on-site personnel are 40-hour HazWoper trained in accordance with OSHA regulations outlined in 29 CFR 1910.120(e). Prior to the start of the site investigation, AES prepared and implemented a comprehensive site-specific Job Safety Analysis (JSA) addressing the site investigation activities and associated soil boring installation and soil and groundwater sampling. All employees and subcontractors were required to read and sign the JSA to acknowledge their understanding of the information contained within the JSA. The JSA was implemented and enforced on site by the assigned Site Safety and Health Officer.

2.2 Soil Borings

On March 30 and 31, 2012, AES installed five soil borings (SB-1 through SB-5). Soil boring SB-1 was advanced to a total depth of 30 feet bgs. SB-2 was advanced to a total depth of 50 feet bgs, and SB-3 was advanced to a total depth of 52 feet bgs. SB-4 and SB-5 were each advanced to a total depth of 47 feet bgs. Note that on March 31, 2012, a leaking water line from the above ground sprinkling system east of the site caused the investigation area to be flooded. As a result, the locations of two soil borings (SB-4 and SB-5) had to be moved because the drilling rig could not access these locations due to the muddy conditions. The locations of the soil borings are presented on Figure 3.

2.2.1 Drilling Methods

Soil borings were completed with a CME 75 hollow stem auger drilling rig operated by Kyvek Energy Services, Aztec, New Mexico.

2.2.2 Soil Sample Collection

Soil samples were collected from a continuously driven core-barrel during advancement of soil borings SB-1 and SB-2. Two soil samples were collected from each core barrel and then split for field screening of volatile organic compounds (VOCs) and for potential laboratory analysis. During the drilling of soil boring SB-2, the continuous core-barrel sampler was damaged to the point it could no longer be used. As a result, soil samples from SB-3, SB-4, and SB-5 were collected using a 2-foot split spoon sampler driven at 5-foot intervals. One soil sample was collected from each spoon and then split for field screening of VOCs and for potential laboratory analysis. The soil samples submitted for laboratory analysis were from the intervals with the highest observed field screening readings, the capillary fringe, and from the bottom of each soil boring, except SB-2 due to problems with the down-hole sampling equipment.

For each boring, a soil boring log was completed. These logs recorded sample identification, depth collected, and method of collection, as well as observations of soil moisture, color, grain size, contaminant presence, and overall stratigraphy. Site lithology consists of alternating layers of fine to medium grained sand and sandy clay from the ground surface to total depth. Soil boring logs are included in Appendix A, and geologic cross sections based on the boring logs are presented in Figure 4.

2.2.3 Soil Field Screening

Samples were collected at 2-foot intervals from soil boring SB-1 and SB-2 and 5-foot intervals from soil borings SB-3, SB-4, and SB-5 and field screened for VOC vapors utilizing a photo-ionization detector (PID) organic vapor meter (OVM) calibrated with isobutylene gas. Once collected, the soil samples to be field screened were immediately placed in 1 quart plastic ziplock bags and sealed. The soil samples were then allowed to warm to approximately

80°F. Approximately 10 minutes were allowed for the soil to be heated and for any VOCs in the soil to accumulate in the headspace of the plastic bag. During the initial stages of headspace development, the sample was gently shaken for 1 minute to promote vapor development and disaggregate the sample. VOCs were then measured by opening the ziplock bag and inserting the sampling tube of the PID-OVM. The highest (peak) measurements were recorded onto the soil boring logs.

2.2.4 Soil Laboratory Analyses

Select soil samples collected from the borings were preserved in laboratory-supplied containers and stored in an insulated cooler containing ice. Samples were shipped by lab personnel in insulated coolers containing ice at less than 6°C via bus to the laboratory, Hall Environmental Analysis Laboratory (Hall), Albuquerque, New Mexico, for laboratory analysis of the following parameters:

- Benzene, Toluene, Ethylbenzene, Xylenes (BTEX) per USEPA Method 8021;
- Total Petroleum Hydrocarbons (TPH) – Gasoline Range Organics (GRO) / Diesel Range Organics (DRO) per USEPA Method 8015.

2.3 Groundwater Sampling

Groundwater was encountered in each soil boring between 27 to 29 feet bgs. Based on soil field screening results, one groundwater sample (SB-2W) was collected from soil boring SB-2 using a new disposable bailer.

Once collected, the sample was preserved in laboratory-supplied containers and stored in an insulated cooler containing ice. Samples were shipped by Hall personnel in insulated coolers containing ice at less than 6°C via bus to the laboratory.

2.3.1 Laboratory Analyses

The groundwater sample (SB-2W) was analyzed for the following parameters:

- BTEX per USEPA Method 8021.

3.0 Site Investigation Results

3.1 Soil

Soil samples were collected from each soil boring for field screening and laboratory analysis. VOC field screening readings exceeding the NMOCD threshold of 100 ppm were reported in SB-2 and SB-3.

Soil analytical results from SB-1 through SB-5 showed that residual contaminant concentrations were either below applicable NMOCD action levels or were below laboratory detection limits for benzene, total BTEX, and TPH. Tabulated analytical results are presented in Table 1 and on Figure 3. Soil analytical laboratory reports are presented in Appendix B.

3.2 Groundwater

One groundwater sample (SB-2W) collected from boring SB-2 and submitted for laboratory analysis. Laboratory analytical results indicated that benzene concentrations exceeded the New Mexico Water Quality Control Commission (WQCC) standard of 10 µg/L with 1,500 µg/L. Additionally, other dissolved phase concentrations were above applicable WQCC standards with 3,500 µg/L toluene and 1,900 µg/L total xylenes. Groundwater analytical results are presented in Table 2 and on Figure 3. Groundwater analytical laboratory reports are presented in Appendix B.

4.0 Conclusions and Recommendations

In response to the March 2012 Federal 2E #1 pipeline release, five soil borings (SB-1 through SB-5) were installed by AES on March 30 and 31, 2012. Soil samples collected indicated that residual BTEX and TPH concentrations do not exceed NMOCD action levels. The highest soil concentrations were reported in SB-2 (release area) at 18 feet bgs with 1.1 mg/kg total BTEX and 21 mg/kg GRO.

Dissolved phase analytical results indicate groundwater is impacted above the WQCC standards for benzene, toluene, and total xylenes in SB-2W. Dissolved phase concentrations were reported at 1,500 µg/L benzene, 3,500 µg/L toluene, and 1,900 µg/L xylenes.

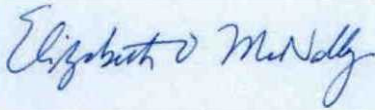
Based on groundwater analytical results, AES recommends installing five groundwater monitoring wells to horizontally delineate the dissolved phase groundwater contaminant plume from which a corrective action plan can be developed. Because the recommended monitoring wells will be installed within an agricultural field which is tilled annually, AES, in consultation with NAPI personnel, will design and construct the monitoring well surface accesses to be below the maximum tilling depth. A work plan detailing the proposed work is currently in progress.

5.0 Certification

I, the undersigned, am personally familiar with the information presented in this Site Investigation Report, prepared on behalf of Enterprise Products Company, Inc. for the March 2012 Federal 2E #1 pipeline release. I attest that it is true and complete to the best of my knowledge.



Ross Kennemer
Project Manager



Elizabeth McNally, P.E.
Principal

6.0 References

Animas Environmental Services, LLC (AES). *Enterprise Federal 2E #1 Initial Release and Abatement Report, March 28, 2012*

New Mexico Oil Conservation Division. *Guidelines for Remediation of Leaks, Spills, and Releases. October 13, 1993.*

U.S. Environmental Protection Agency (USEPA). 1982. *Methods for Chemical Analysis for Water and Wastes*. Document EPA-600, July, 1982.

USEPA. 1992. SW-846, 3rd Edition, *Test Methods for Evaluating Solid Waste: Physical Chemical Methods*, dated November, 1986, and as amended by Update One, July, 1992.

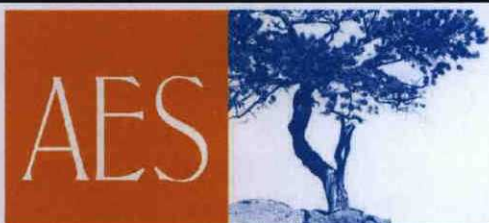
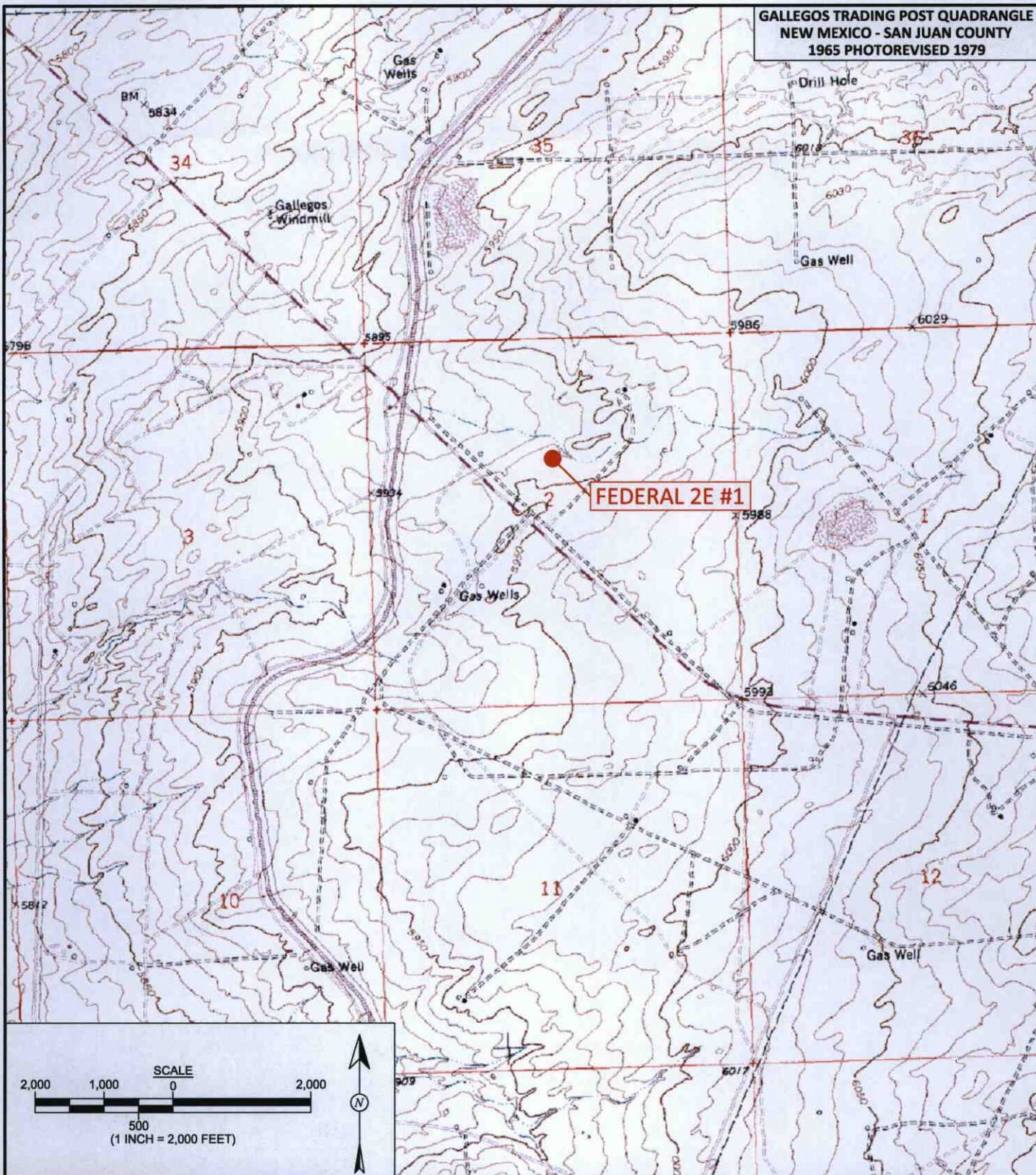
USEPA. 1991. *Site Characterization for Subsurface Remediation*, EPA 625/4-91-026, November, 1991.

USEPA. 1997. *Expedited Site Assessment Tools for Underground Storage Tank Sites*. OSWER 5403G and EPA 510B-97-001, March, 1997.

USEPA. 2001. Contract Laboratory Program (CLP) Guidance for Field Samplers. OSWER 9240.0-35, EPA 540-R-00-003. June, 2001.

WQCC 82-1, Water Quality Control Commission Regulations, filed August 19, 1982, and effective September 20, 1982.

**GALLEGOS TRADING POST QUADRANGLE
NEW MEXICO - SAN JUAN COUNTY
1965 PHOTOREVISED 1979**



Animas Environmental Services, LLC

DRAWN BY:
C. Lameman

DATE DRAWN:
March 27, 2012

REVISIONS BY:
C. Lameman

DATE REVISED:
March 27, 2012

CHECKED BY:
T. Ross

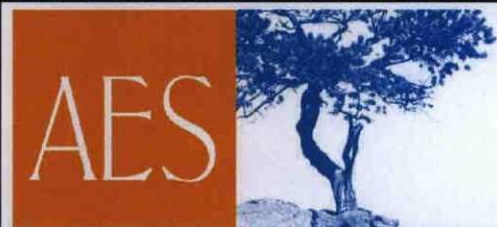
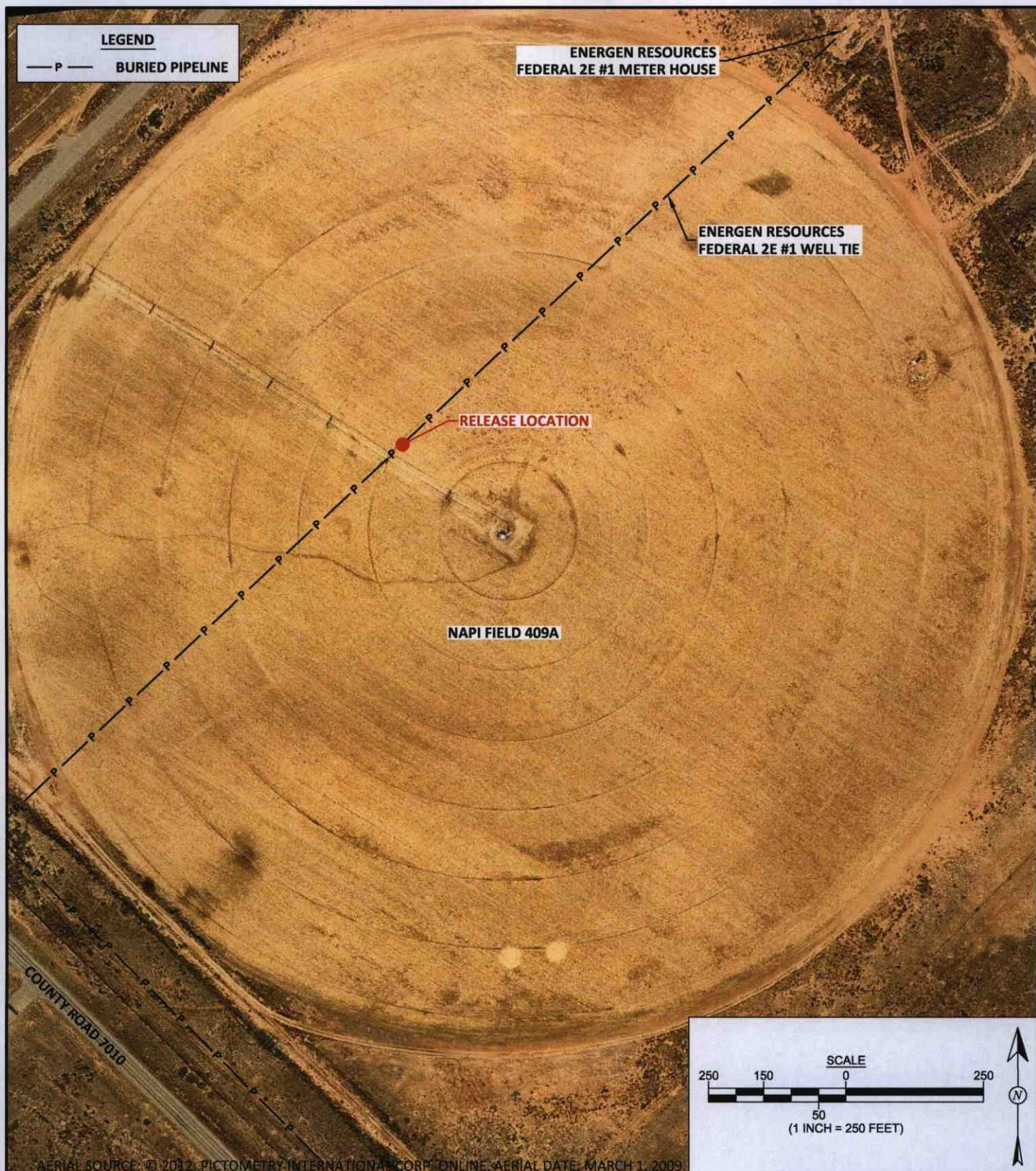
DATE CHECKED:
June 26, 2012

APPROVED BY:
E. McNally

DATE APPROVED:
June 26, 2012

FIGURE 1

TOPOGRAPHIC SITE LOCATION MAP
ENTERPRISE PRODUCTS COMPANY
FEDERAL 2E #1
SAN JUAN COUNTY, NEW MEXICO
SW $\frac{1}{4}$, NE $\frac{1}{4}$, SECTION 2, T27N R12W
N36.60681, W108.08013



Animas Environmental Services, LLC

DRAWN BY:
C. Lameman

DATE DRAWN:
March 27, 2012

REVISIONS BY:
C. Lameman

DATE REVISED:
June 28, 2012

CHECKED BY:
T. Ross

DATE CHECKED:
June 28, 2012

APPROVED BY:
E. McNally

DATE APPROVED:
June 28, 2012

FIGURE 2

AERIAL SITE MAP
ENTERPRISE PRODUCTS COMPANY
FEDERAL 2E #1
SAN JUAN COUNTY, NEW MEXICO
SW $\frac{1}{4}$, NE $\frac{1}{4}$, SECTION 2, T27N R12W
N36.60681, W108.08013

SOIL LABORATORY ANALYTICAL RESULTS

Sample ID	Date	Depth (ft)	OVM-PPM (ppm)	Benzene (mg/kg)	Total BTEX (mg/kg)	TPH-GRO (mg/kg)	TPH-DRO (mg/kg)
NMOCD ACTION LEVEL			100	10	50	100	
SB-1	3/30/12	2 to 4	58	<0.048	<0.24	<4.8	21
		12 to 14	63.3	<0.047	<0.234	<4.7	<10
		28 to 30	7.9	<0.047	<0.234	<4.7	<9.8
SB-2	3/30/12	10 to 12	1,156	<0.049	<0.244	<4.9	<9.8
		18 to 20	1,405	<0.049	1.1	21	<9.6
		26 to 28	834	<0.047	<0.235	<4.7	<10
		48 to 50	299	<0.050	<0.249	<5.0	<10
SB-3	3/31/12	5 to 7	109	<0.048	<0.239	<4.8	<9.9
		25 to 27	0.0	<0.048	<0.241	<4.8	<10
		50 to 52	0.0	<0.047	<0.236	<4.7	<9.8
SB-4	3/31/12	10 to 12	86.6	<0.047	<0.234	<4.7	<9.9
		25 to 27	34.4	<0.048	<0.239	<4.8	<10
		47	0.0	<0.050	<0.25	<5.0	<9.6
SB-5	3/31/12	15 to 17	29.3	<0.047	<0.235	<4.7	<10
		20 to 22	73.3	<0.046	<0.231	<4.6	<9.9
		47	0.0	<0.050	<0.25	<5.0	<10

NOTE: SAMPLES WERE ANALYZED PER EPA METHOD 8021B AND 8015B.

GROUNDWATER LABORATORY ANALYTICAL RESULTS

Sample ID	Date	Benzene (µg/L)	Toluene (µg/L)	Ethyl-Benzene (µg/L)	Xylenes (µg/L)
WQCC STANDARD		10	750	750	620
SB-2W	3/31/12	1,500	3,500	260	1,900

NOTE: SAMPLE WAS ANALYZED PER EPA METHOD 8021B.

LEGEND

- SOIL BORING AND SAMPLE LOCATIONS
- P — BURIED PIPELINE

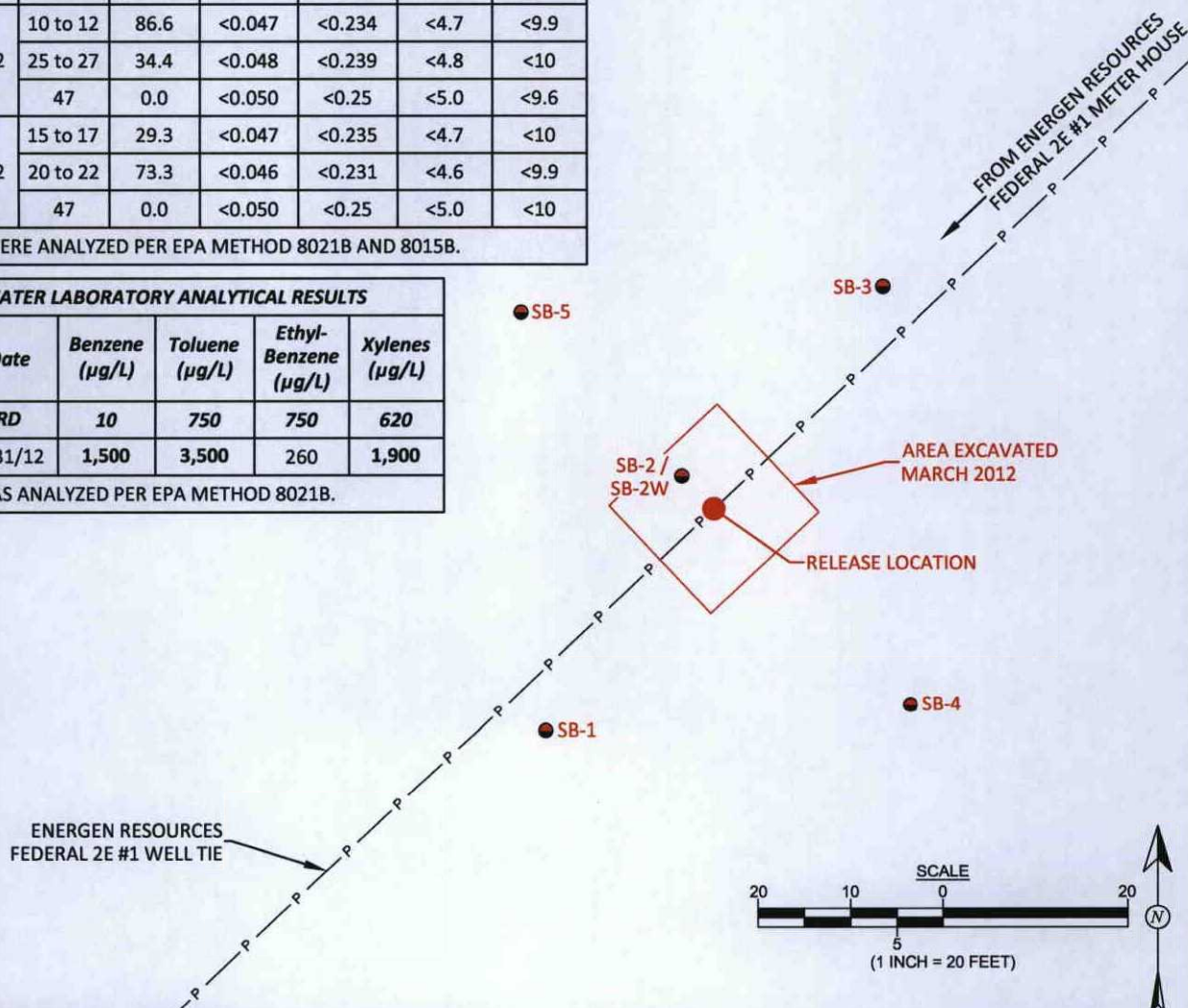
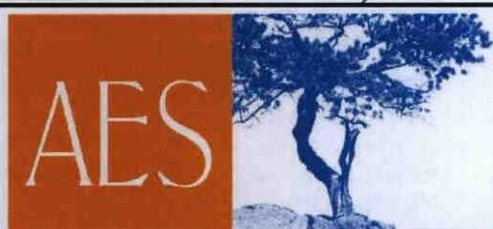


FIGURE 3

SOIL BORING LOCATIONS AND SAMPLE RESULTS, MARCH 2012

ENTERPRISE PRODUCTS COMPANY
FEDERAL 2E #1
SAN JUAN COUNTY, NEW MEXICO
SW¼, NE¼, SECTION 2, T27N R12W
N36.60681, W108.08013



Animas Environmental Services, LLC

DRAWN BY:
C. Lameman

DATE DRAWN:
March 28, 2012

REVISIONS BY:
C. Lameman

DATE REVISED:
June 26, 2012

CHECKED BY:
T. Ross

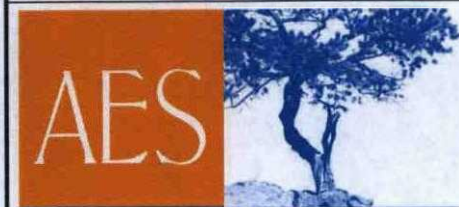
DATE CHECKED:
June 26, 2012

APPROVED BY:
E. McNally

DATE APPROVED:
June 26, 2012

FIGURE 4

CROSS SECTIONS A - A' & B - B'
MARCH 2012
ENTERPRISE PRODUCTS COMPANY
FEDERAL 2E #1
SAN JUAN COUNTY, NEW MEXICO
SW¼, NE¼, SECTION 2, T27N R12W
N36.60681, W108.08013



Animas Environmental Services, LLC

DRAWN BY: C. Lameman	DATE DRAWN: May 2, 2012
REVISIONS BY: C. Lameman	DATE REVISED: June 28, 2012
CHECKED BY: T. Ross	DATE CHECKED: June 28, 2012
APPROVED BY: E. McNally	DATE APPROVED: June 28, 2012

LEGEND

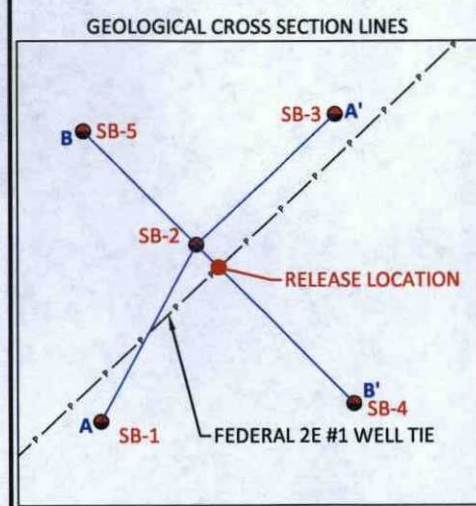
— 0.0 PPM OVM/PID READINGS (PARTS PER MILLION)

— GROUNDWATER ELEVATION

SW; Sand

SC; Sandy Clay

CH; Clay



NOT TO SCALE

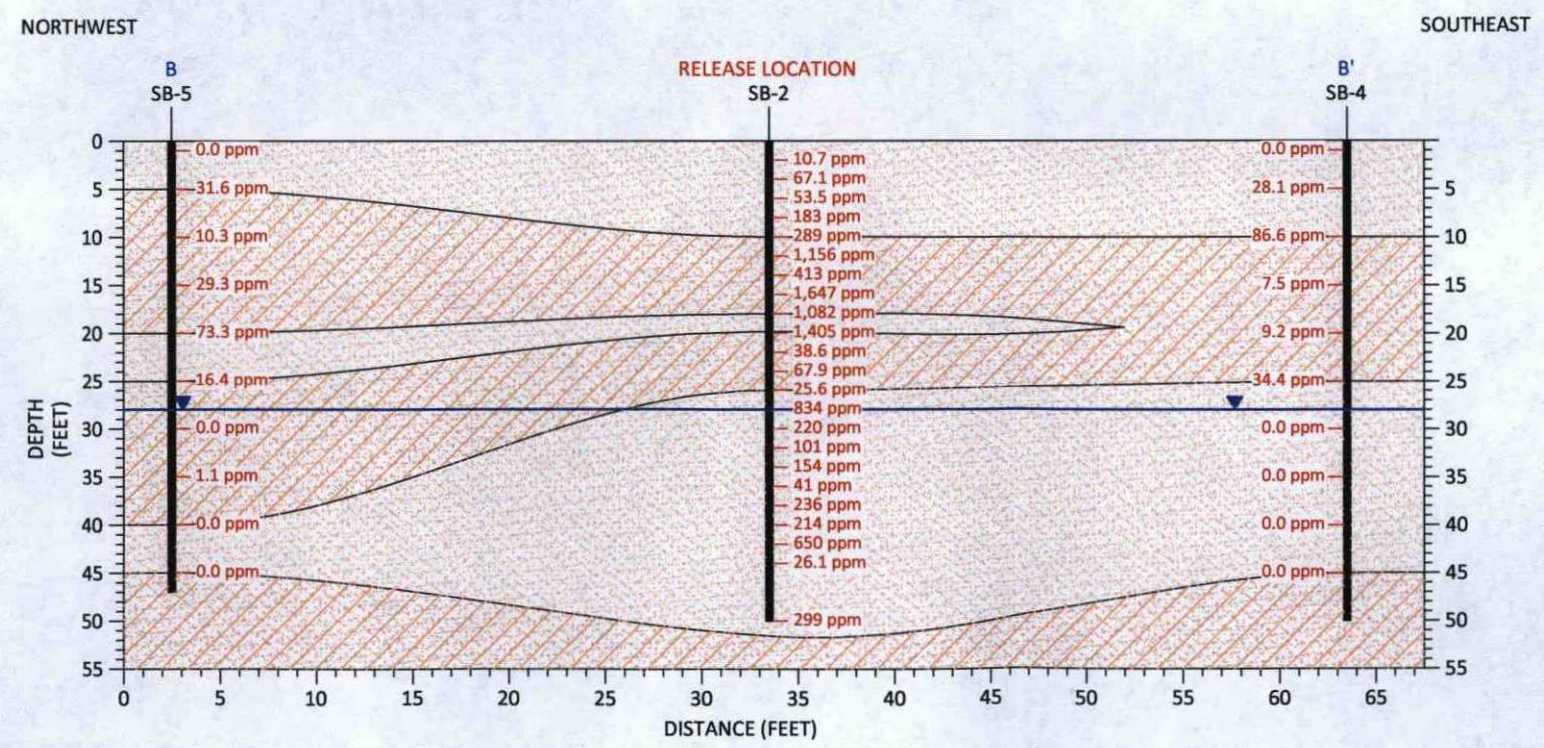
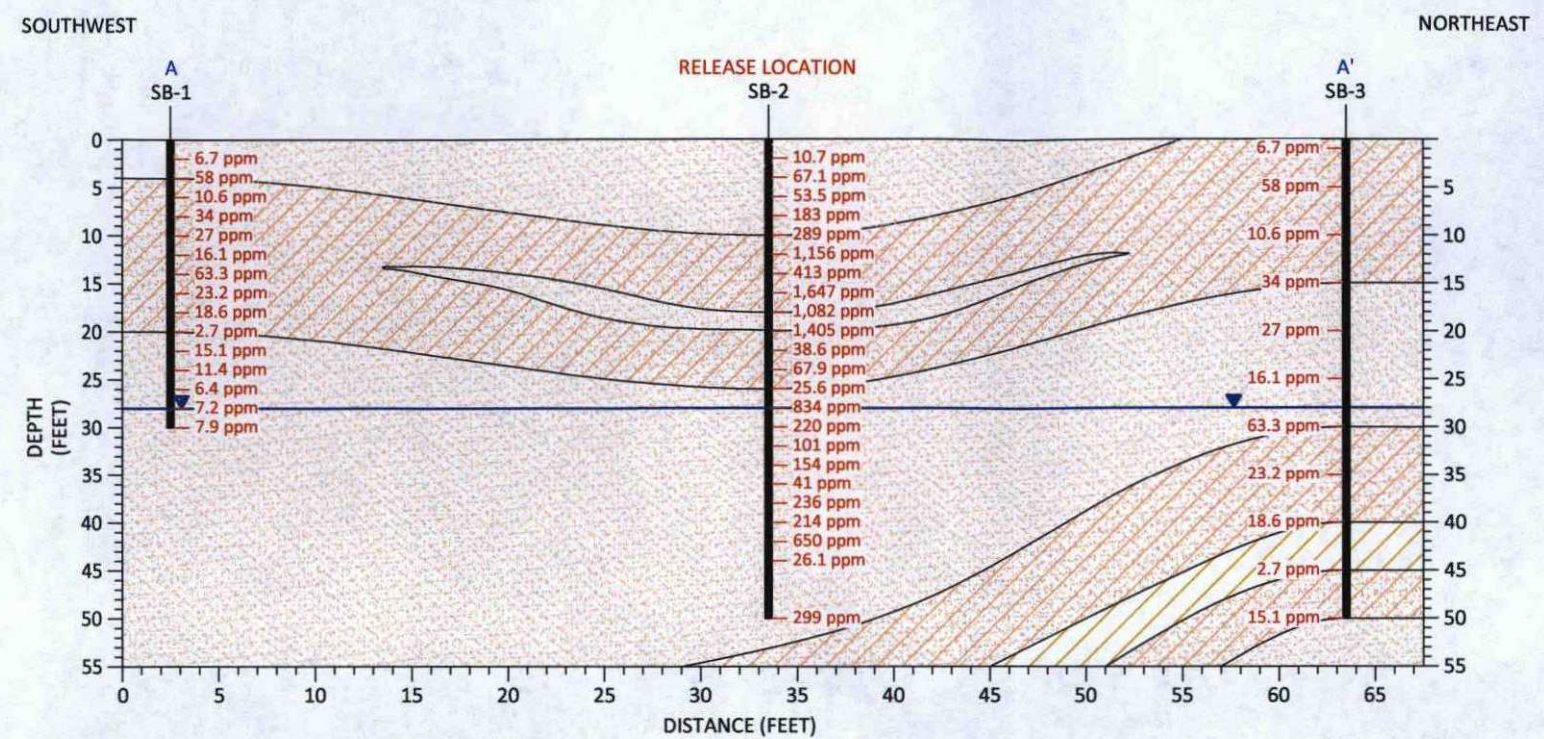


TABLE 1
SUMMARY OF SOIL LABORATORY ANALYTICAL RESULTS
Enterprise Federal 2E #1 March 2012 Pipeline Release
San Juan County, New Mexico

<i>Sample ID</i>	<i>Date Sampled</i>	<i>Depth (feet)</i>	<i>OVM Reading</i>	<i>Benzene</i>	<i>BTEX</i>	<i>GRO (C6-C10)</i>	<i>DRO (C10-C22)</i>
			<i>(ppm)</i>	<i>(mg/kg)</i>	<i>(mg/kg)</i>	<i>(mg/kg)</i>	<i>(mg/kg)</i>
NMOCD Action Level			100	10	50	100	
SB-1	30-Mar-12	2 to 4	58	<0.048	<0.240	<4.8	21
		12 to 14	63.3	<0.047	<0.234	<4.7	<10
		28 to 30	7.9	<0.047	<0.234	<4.7	<9.8
SB-2	30-Mar-12	10 to 12	1,156	<0.049	<0.244	<4.9	<9.8
		18 to 20	1,405	<0.049	1.1	21	<9.6
		26 to 28	834	<0.047	<0.235	<4.7	<10
		48 to 50	299	<0.050	<0.249	<5.0	<10
SB-3	31-Mar-12	5 to 7	109	<0.048	<0.239	<4.8	<9.9
		25 to 27	0.0	<0.048	<0.241	<4.8	<10
		50 to 52	0.0	<0.047	<0.236	<4.7	<9.8
SB-4	31-Mar-12	10 to 12	86.6	<0.047	<0.234	<4.7	<9.9
		25 to 27	34.4	<0.048	<0.239	<4.8	<10
		47	0.0	<0.050	<0.250	<5.0	<9.6
SB-5	31-Mar-12	15 to 17	29.3	<0.047	<0.235	<4.7	<10
		20 to 22	73.3	<0.046	<0.231	<4.6	<9.9
		47	0.0	<0.050	<0.250	<5.0	<10

TABLE 2
SUMMARY OF GROUNDWATER LABORATORY ANALYTICAL RESULTS
Enterprise Federal 2E #1 March 2012 Pipeline Release
San Juan County, New Mexico

<i>Soil Boring ID</i>	<i>Date Sampled</i>	<i>Benzene</i>	<i>Toluene</i>	<i>Ethyl-Benzene</i>	<i>Total Xylenes</i>
		($\mu\text{g/L}$)	($\mu\text{g/L}$)	($\mu\text{g/L}$)	($\mu\text{g/L}$)
<i>Analytical Method</i>		8021	8021	8021	8021
<i>WQCC Standard</i>		10	750	750	620
SB-2W	31-Mar-12	1,500	3,500	260	1,900



Animas
Environmental
Services, LLC.
624 East Comanche St.
Farmington, NM 87401

SB-1

ENTERPRISE PRODUCTS COMPANY
FEDERAL 2E #1
SAN JUAN COUNTY, NEW MEXICO
SW1/4, NE1/4, SECTION 2, T27N, R12W

Date Started : 3/30/12
Date Completed : 3/30/12
Hole Diameter : 8"
Drilling Method : HSA
Sampling Method : Split Spoon

Latitude : N36.60671
Longitude : W108.08023
Survey By : GPS
Logged By : T. Long

Depth in Feet	Surf. Elev. 0	USCS	GRAPHIC	DESCRIPTION	Water Level	PID (ppm)
0	0			Sand, Brown, Fine, Dry, No Odor, No Staining		
2	-2	SW				6.7
4	-4					58
6	-6	SC		Sandy Clay, Light Brown, Moist, No Odor, No Staining		10.6
8	-8					34
10	-10					27
12	-12			Sandy Clay, Light Brown/Tan, Moist, No Odor, No Staining		16.1
14	-14	SC				63.3
16	-16					23.2
18	-18					18.6
20	-20					2.7
22	-22			Sand, Light Brown, Fine to Medium Grained, Moist, No Odor, No Staining		15.1
24	-24	SW				11.4
26	-26					6.4
28	-28					7.2
30						7.9



SB-2

ENTERPRISE PRODUCTS COMPANY
FEDERAL 2E #1
SAN JUAN COUNTY, NEW MEXICO
SW1/4, NE1/4, SECTION 2, T27N, R12W

Date Started : 3/30/12
Date Completed : 3/30/12
Hole Diameter : 8"
Drilling Method : HSA
Sampling Method : Split Spoon

Latitude : N36.60747
Longitude : W108.08060
Survey By : GPS
Logged By : T. Long

Depth in Feet	Surf. Elev. 0	USCS	GRAPHIC	DESCRIPTION	Water Level	PID (ppm)
0	0			Sand, Brown, Fine, Dry, No Odor, No Staining		10.7
5	-5	SW				67.1
						53.5
						183
10	-10					289
		SC		Sandy Clay, Brown, Fine, Moist, Moderate Odor, No Staining		1,156
						413
15	-15					1,647
		SW		Sand, Tan, Fine, Moist, Moderate Odor, No Staining		1,082
20	-20					1,405
		SC		Sandy Clay, Brown, Fine, Moist, No Odor, No Staining		38.6
						67.9
25	-25					25.6
		SW		Sand, Light Brown, Fine, Moist, No Odor, No Staining		834
30	-30					220
		SW		Sand, Brown, Fine, Wet, No Odor, No Staining		101
						154
35	-35					41
				Sand, Light Brown, Fine to Medium Grained, Wet, No Odor, No Staining		236
						214
40	-40					650
		SW				26.1
45	-45					
50						299



Animas
Environmental
Services, LLC.
624 East Comanche St.
Farmington, NM 87401

SB-3

ENTERPRISE PRODUCTS COMPANY
FEDERAL 2E #1
SAN JUAN COUNTY, NEW MEXICO
SW1/4, NE1/4, SECTION 2, T27N, R12W

Date Started : 3/31/12
Date Completed : 3/31/12
Hole Diameter : 8"
Drilling Method : HSA
Sampling Method : Split Spoon

Latitude : N36.67047
Longitude : W108.08060
Survey By : GPS
Logged By : T. Long

Depth in Feet	Surf. Elev. 0	USCS	GRAPHIC	DESCRIPTION	Water Level	PID (ppm)
0	0			Sandy Clay, Brown, Fine, Dry, No Odor, No Staining		0.0
5	-5	SC				109
10	-10	SC		Sandy Clay, Light Gray, Soft, Moist, No Odor, No Staining		19
15	-15			Sand, Light Brown, Fine, Moist, No Odor, No Staining		17.8
20	-20	SW				2.0
25	-25					0.0
30	-30			Sandy Clay, Brown/ Gray, Wet, No Odor, No Staining		2.4
35	-35	SC				0.0
40	-40	CL		Clay, Gray, Wet, No Odor, No Staining		0.0
45	-45	SC		Sandy Clay, Light Gray, Fine, Wet, No Odor, No Staining		0.0
50		SW		Sand, Tan/ Brown, Fine, Wet, No Odor, No Staining		0.0



Animas
Environmental
Services, LLC.
624 East Comanche St.
Farmington, NM 87401

SB-4

ENTERPRISE PRODUCTS COMPANY
FEDERAL 2E #1
SAN JUAN COUNTY, NEW MEXICO
SW1/4, NE1/4, SECTION 2, T27N, R12W

Date Started : 3/31/12
Date Completed : 3/31/12
Hole Diameter : 2.25
Drilling Method : HSA
Sampling Method : None

Latitude : N36.60673
Longitude : W108.08010
Survey By : GPS
Logged By : T. Long

Depth in Feet	Surf. Elev. 0	USCS	GRAPHIC	DESCRIPTION	Water Level	PID (ppm)
0	0			Sand, Brown, Fine, Dry, No Odor, No Staining		0.0
5	-5	SW				28.1
10	-10	SC		Sandy Clay, Tan/Brown, Fine, Moist, No Odor, No Staining		86.6
15	-15			Sandy Clay, Gray, Fine, Moist, No Odor, No Staining		7.5
20	-20	SC				9.2
25	-25			Sand, Light Brown, Fine to Medium Grained, Moist/Wet, No Odor, No Staining		34.4
30	-30	SW				0.0
35	-35			Sand, Brown, Fine to Medium Grained, Wet, No Odor, No Staining		0.0
40	-40	SW				0.0
45		SC		Sandy Clay, Gray, Fine, Wet, No Odor, No Staining		0.0



Animas
Environmental
Services, LLC.
624 East Comanche St.
Farmington, NM 87401

SB-5

ENTERPRISE PRODUCTS COMPANY
FEDERAL 2E #1
SAN JUAN COUNTY, NEW MEXICO
SW1/4, NE1/4, SECTION 2, T27N, R12W

Date Started : 3/31/12
Date Completed : 3/31/12
Hole Diameter : 8"
Drilling Method : HSA
Sampling Method : Split Spoon

Latitude : N36.60680
Longitude : W108.0818
Survey By : GPS
Logged By : T. Long

Depth in Feet	Surf. Elev. 0	USCS	GRAPHIC	DESCRIPTION	Water Level	PID (ppm)
0	0	SW		Sand, Brown, Fine, Moist, No Odor, No Staining		0.0
5	-5	SC		Sandy Clay, Light Brown, Fine, Moist, No Odor, No Staining		31.6
10	-10	SC				10.3
15	-15	SC				29.3
20	-20	SW		Sand, Light Brown, Fine to Medium Grained, Wet, No Odor, No Staining		73.3
25	-25	SC		Sandy Clay, Light Brown, Fine, Wet, No Odor, No Staining		16.4
30	-30	SC				0.0
35	-35	SC		Sandy Clay, Brown, Wet, No Odor, No Staining		1.1
40	-40	SW		Sand, Light Brown, Fine to Medium Grained, Wet, No Odor, No Staining		0.0
45	-45	SC		Sandy Clay, Light Gray, Fine, Wet, No Odor, No Staining		0.0



*Hall Environmental Analysis Laboratory
4901 Hawkins NE
Albuquerque, NM 87109
TEL: 505-345-3975 FAX: 505-345-4107
Website: www.hallenvironmental.com*

April 09, 2012

Ross Kennemer

Animas Environmental Services

624 East Comanche

Farmington, NM 87401

TEL: (505) 564-2281

FAX (505) 324-2022

RE: Enterprise Federal 2E #1

OrderNo.: 1204091

Dear Ross Kennemer:

Hall Environmental Analysis Laboratory received 12 sample(s) on 4/3/2012 for the analyses presented in the following report.

These were analyzed according to EPA procedures or equivalent. To access our accredited tests please go to www.hallenvironmental.com or the state specific web sites. See the sample checklist and/or the Chain of Custody for information regarding the sample receipt temperature and preservation. Data qualifiers or a narrative will be provided if the sample analysis or analytical quality control parameters require a flag. All samples are reported as received unless otherwise indicated.

Please don't hesitate to contact HEAL for any additional information or clarifications.

Sincerely,

Andy Freeman

Laboratory Manager

4901 Hawkins NE

Albuquerque, NM 87109

Hall Environmental Analysis Laboratory, Inc.

Analytical Report

Lab Order 1204091

Date Reported: 4/9/2012

CLIENT: Animas Environmental Services

Client Sample ID: SB-1 2-4'

Project: Enterprise Federal 2E #1

Collection Date: 3/30/2012 12:33:00 PM

Lab ID: 1204091-001

Matrix: SOIL

Received Date: 4/3/2012 10:30:00 AM

Analyses	Result	RL	Qual	Units	DF	Date Analyzed
EPA METHOD 8015B: DIESEL RANGE ORGANICS						Analyst: JMP
Diesel Range Organics (DRO)	21	10		mg/Kg	1	4/5/2012 5:49:38 PM
Surr: DNOP	105	77.4-131		%REC	1	4/5/2012 5:49:38 PM
EPA METHOD 8015B: GASOLINE RANGE						Analyst: NSB
Gasoline Range Organics (GRO)	ND	4.8		mg/Kg	1	4/6/2012 1:28:44 PM
Surr: BFB	92.0	69.7-121		%REC	1	4/6/2012 1:28:44 PM
EPA METHOD 8021B: VOLATILES						Analyst: NSB
Benzene	ND	0.048		mg/Kg	1	4/6/2012 1:28:44 PM
Toluene	ND	0.048		mg/Kg	1	4/6/2012 1:28:44 PM
Ethylbenzene	ND	0.048		mg/Kg	1	4/6/2012 1:28:44 PM
Xylenes, Total	ND	0.096		mg/Kg	1	4/6/2012 1:28:44 PM
Surr: 4-Bromofluorobenzene	87.9	80-120		%REC	1	4/6/2012 1:28:44 PM

Qualifiers: */X Value exceeds Maximum Contaminant Level.
E Value above quantitation range
J Analyte detected below quantitation limits
R RPD outside accepted recovery limits
S Spike Recovery outside accepted recovery limits

B Analyte detected in the associated Method Blank
H Holding times for preparation or analysis exceeded
ND Not Detected at the Reporting Limit
RL Reporting Detection Limit

Hall Environmental Analysis Laboratory, Inc.

Analytical Report

Lab Order 1204091

Date Reported: 4/9/2012

CLIENT: Animas Environmental Services

Client Sample ID: SB-1 12-14'

Project: Enterprise Federal 2E #1

Collection Date: 3/30/2012 12:52:00 PM

Lab ID: 1204091-002

Matrix: SOIL

Received Date: 4/3/2012 10:30:00 AM

Analyses	Result	RL	Qual	Units	DF	Date Analyzed
EPA METHOD 8015B: DIESEL RANGE ORGANICS						Analyst: JMP
Diesel Range Organics (DRO)	ND	10		mg/Kg	1	4/5/2012 6:11:01 PM
Surr: DNOP	99.9	77.4-131		%REC	1	4/5/2012 6:11:01 PM
EPA METHOD 8015B: GASOLINE RANGE						Analyst: NSB
Gasoline Range Organics (GRO)	ND	4.7		mg/Kg	1	4/6/2012 3:24:06 PM
Surr: BFB	91.1	69.7-121		%REC	1	4/6/2012 3:24:06 PM
EPA METHOD 8021B: VOLATILES						Analyst: NSB
Benzene	ND	0.047		mg/Kg	1	4/6/2012 3:24:06 PM
Toluene	ND	0.047		mg/Kg	1	4/6/2012 3:24:06 PM
Ethylbenzene	ND	0.047		mg/Kg	1	4/6/2012 3:24:06 PM
Xylenes, Total	ND	0.093		mg/Kg	1	4/6/2012 3:24:06 PM
Surr: 4-Bromofluorobenzene	85.5	80-120		%REC	1	4/6/2012 3:24:06 PM

Qualifiers: */X Value exceeds Maximum Contaminant Level.
E Value above quantitation range
J Analyte detected below quantitation limits
R RPD outside accepted recovery limits
S Spike Recovery outside accepted recovery limits

B Analyte detected in the associated Method Blank
H Holding times for preparation or analysis exceeded
ND Not Detected at the Reporting Limit
RL Reporting Detection Limit

Hall Environmental Analysis Laboratory, Inc.

Analytical Report

Lab Order 1204091

Date Reported: 4/9/2012

CLIENT: Animas Environmental Services

Client Sample ID: SB-1 28-30'

Project: Enterprise Federal 2E #1

Collection Date: 3/30/2012 1:27:00 PM

Lab ID: 1204091-003

Matrix: SOIL

Received Date: 4/3/2012 10:30:00 AM

Analyses	Result	RL	Qual	Units	DF	Date Analyzed
EPA METHOD 8015B: DIESEL RANGE ORGANICS						Analyst: JMP
Diesel Range Organics (DRO)	ND	9.8		mg/Kg	1	4/5/2012 6:32:30 PM
Surr: DNOP	97.7	77.4-131		%REC	1	4/5/2012 6:32:30 PM
EPA METHOD 8015B: GASOLINE RANGE						Analyst: NSB
Gasoline Range Organics (GRO)	ND	4.7		mg/Kg	1	4/6/2012 3:52:52 PM
Surr: BFB	91.7	69.7-121		%REC	1	4/6/2012 3:52:52 PM
EPA METHOD 8021B: VOLATILES						Analyst: NSB
Benzene	ND	0.047		mg/Kg	1	4/6/2012 3:52:52 PM
Toluene	ND	0.047		mg/Kg	1	4/6/2012 3:52:52 PM
Ethylbenzene	ND	0.047		mg/Kg	1	4/6/2012 3:52:52 PM
Xylenes, Total	ND	0.093		mg/Kg	1	4/6/2012 3:52:52 PM
Surr: 4-Bromofluorobenzene	86.7	80-120		%REC	1	4/6/2012 3:52:52 PM

Qualifiers: */X Value exceeds Maximum Contaminant Level.
E Value above quantitation range
J Analyte detected below quantitation limits
R RPD outside accepted recovery limits
S Spike Recovery outside accepted recovery limits

B Analyte detected in the associated Method Blank
H Holding times for preparation or analysis exceeded
ND Not Detected at the Reporting Limit
RL Reporting Detection Limit

Analytical Report

Lab Order 1204091

Date Reported: 4/9/2012

Hall Environmental Analysis Laboratory, Inc.

CLIENT: Animas Environmental Services

Client Sample ID: SB-2 10-12'

Project: Enterprise Federal 2E #1

Collection Date: 3/30/2012 1:58:00 PM

Lab ID: 1204091-004

Matrix: SOIL

Received Date: 4/3/2012 10:30:00 AM

Analyses	Result	RL	Qual	Units	DF	Date Analyzed
EPA METHOD 8015B: DIESEL RANGE ORGANICS						Analyst: JMP
Diesel Range Organics (DRO)	ND	9.8		mg/Kg	1	4/5/2012 6:53:54 PM
Surr: DNOP	101	77.4-131		%REC	1	4/5/2012 6:53:54 PM
EPA METHOD 8015B: GASOLINE RANGE						Analyst: NSB
Gasoline Range Organics (GRO)	ND	4.9		mg/Kg	1	4/6/2012 4:21:36 PM
Surr: BFB	97.2	69.7-121		%REC	1	4/6/2012 4:21:36 PM
EPA METHOD 8021B: VOLATILES						Analyst: NSB
Benzene	ND	0.049		mg/Kg	1	4/6/2012 4:21:36 PM
Toluene	ND	0.049		mg/Kg	1	4/6/2012 4:21:36 PM
Ethylbenzene	ND	0.049		mg/Kg	1	4/6/2012 4:21:36 PM
Xylenes, Total	ND	0.097		mg/Kg	1	4/6/2012 4:21:36 PM
Surr: 4-Bromofluorobenzene	90.8	80-120		%REC	1	4/6/2012 4:21:36 PM

Qualifiers: * / X Value exceeds Maximum Contaminant Level.
E Value above quantitation range
J Analyte detected below quantitation limits
R RPD outside accepted recovery limits
S Spike Recovery outside accepted recovery limits

B Analyte detected in the associated Method Blank
H Holding times for preparation or analysis exceeded
ND Not Detected at the Reporting Limit
RL Reporting Detection Limit

Hall Environmental Analysis Laboratory, Inc.**Analytical Report**

Lab Order 1204091

Date Reported: 4/9/2012

CLIENT: Animas Environmental Services**Client Sample ID:** SB-2 18-20'**Project:** Enterprise Federal 2E #1**Collection Date:** 3/30/2012 2:04:00 PM**Lab ID:** 1204091-005**Matrix:** SOIL**Received Date:** 4/3/2012 10:30:00 AM

Analyses	Result	RL	Qual	Units	DF	Date Analyzed
EPA METHOD 8015B: DIESEL RANGE ORGANICS						Analyst: JMP
Diesel Range Organics (DRO)	ND	9.6		mg/Kg	1	4/5/2012 7:15:23 PM
Surr: DNOP	100	77.4-131		%REC	1	4/5/2012 7:15:23 PM
EPA METHOD 8015B: GASOLINE RANGE						Analyst: NSB
Gasoline Range Organics (GRO)	21	4.9		mg/Kg	1	4/6/2012 4:50:24 PM
Surr: BFB	135	69.7-121	S	%REC	1	4/6/2012 4:50:24 PM
EPA METHOD 8021B: VOLATILES						Analyst: NSB
Benzene	ND	0.049		mg/Kg	1	4/6/2012 4:50:24 PM
Toluene	0.062	0.049		mg/Kg	1	4/6/2012 4:50:24 PM
Ethylbenzene	0.077	0.049		mg/Kg	1	4/6/2012 4:50:24 PM
Xylenes, Total	1.0	0.097		mg/Kg	1	4/6/2012 4:50:24 PM
Surr: 4-Bromofluorobenzene	94.1	80-120		%REC	1	4/6/2012 4:50:24 PM

Qualifiers: */X Value exceeds Maximum Contaminant Level.
E Value above quantitation range
J Analyte detected below quantitation limits
R RPD outside accepted recovery limits
S Spike Recovery outside accepted recovery limits

B Analyte detected in the associated Method Blank
H Holding times for preparation or analysis exceeded
ND Not Detected at the Reporting Limit
RL Reporting Detection Limit

Analytical Report

Lab Order 1204091

Date Reported: 4/9/2012

Hall Environmental Analysis Laboratory, Inc.**CLIENT:** Animas Environmental Services**Client Sample ID:** SB-2 26-28'**Project:** Enterprise Federal 2E #1**Collection Date:** 3/30/2012 2:27:00 PM**Lab ID:** 1204091-006**Matrix:** SOIL**Received Date:** 4/3/2012 10:30:00 AM

Analyses	Result	RL	Qual	Units	DF	Date Analyzed
EPA METHOD 8015B: DIESEL RANGE ORGANICS						Analyst: JMP
Diesel Range Organics (DRO)	ND	10		mg/Kg	1	4/5/2012 7:36:39 PM
Surr: DNOP	98.4	77.4-131		%REC	1	4/5/2012 7:36:39 PM
EPA METHOD 8015B: GASOLINE RANGE						Analyst: NSB
Gasoline Range Organics (GRO)	ND	4.7		mg/Kg	1	4/6/2012 5:19:09 PM
Surr: BFB	99.9	69.7-121		%REC	1	4/6/2012 5:19:09 PM
EPA METHOD 8021B: VOLATILES						Analyst: NSB
Benzene	ND	0.047		mg/Kg	1	4/6/2012 5:19:09 PM
Toluene	ND	0.047		mg/Kg	1	4/6/2012 5:19:09 PM
Ethylbenzene	ND	0.047		mg/Kg	1	4/6/2012 5:19:09 PM
Xylenes, Total	ND	0.094		mg/Kg	1	4/6/2012 5:19:09 PM
Surr: 4-Bromofluorobenzene	90.4	80-120		%REC	1	4/6/2012 5:19:09 PM

Qualifiers: */X Value exceeds Maximum Contaminant Level.
E Value above quantitation range
J Analyte detected below quantitation limits
R RPD outside accepted recovery limits
S Spike Recovery outside accepted recovery limits

B Analyte detected in the associated Method Blank
H Holding times for preparation or analysis exceeded
ND Not Detected at the Reporting Limit
RL Reporting Detection Limit

Hall Environmental Analysis Laboratory, Inc.

Analytical Report

Lab Order 1204091

Date Reported: 4/9/2012

CLIENT: Animas Environmental Services

Client Sample ID: SB-2 48-50'

Project: Enterprise Federal 2E #1

Collection Date: 3/30/2012 4:29:00 PM

Lab ID: 1204091-007

Matrix: SOIL

Received Date: 4/3/2012 10:30:00 AM

Analyses	Result	RL	Qual	Units	DF	Date Analyzed
EPA METHOD 8015B: DIESEL RANGE ORGANICS						Analyst: JMP
Diesel Range Organics (DRO)	ND	10		mg/Kg	1	4/5/2012 7:58:05 PM
Surr: DNOP	102	77.4-131		%REC	1	4/5/2012 7:58:05 PM
EPA METHOD 8015B: GASOLINE RANGE						Analyst: NSB
Gasoline Range Organics (GRO)	ND	5.0		mg/Kg	1	4/6/2012 5:47:59 PM
Surr: BFB	93.8	69.7-121		%REC	1	4/6/2012 5:47:59 PM
EPA METHOD 8021B: VOLATILES						Analyst: NSB
Benzene	ND	0.050		mg/Kg	1	4/6/2012 5:47:59 PM
Toluene	ND	0.050		mg/Kg	1	4/6/2012 5:47:59 PM
Ethylbenzene	ND	0.050		mg/Kg	1	4/6/2012 5:47:59 PM
Xylenes, Total	ND	0.099		mg/Kg	1	4/6/2012 5:47:59 PM
Surr: 4-Bromofluorobenzene	88.1	80-120		%REC	1	4/6/2012 5:47:59 PM

Qualifiers: */X Value exceeds Maximum Contaminant Level.
 E Value above quantitation range
 J Analyte detected below quantitation limits
 R RPD outside accepted recovery limits
 S Spike Recovery outside accepted recovery limits

B Analyte detected in the associated Method Blank
H Holding times for preparation or analysis exceeded
ND Not Detected at the Reporting Limit
RL Reporting Detection Limit

Page 7 of 18

Hall Environmental Analysis Laboratory, Inc.**Analytical Report**

Lab Order 1204091

Date Reported: 4/9/2012

CLIENT: Animas Environmental Services**Client Sample ID:** SB-3 5-7'**Project:** Enterprise Federal 2E #1**Collection Date:** 3/31/2012 9:10:00 AM**Lab ID:** 1204091-008**Matrix:** SOIL**Received Date:** 4/3/2012 10:30:00 AM

Analyses	Result	RL	Qual	Units	DF	Date Analyzed
EPA METHOD 8015B: DIESEL RANGE ORGANICS						Analyst: JMP
Diesel Range Organics (DRO)	ND	9.9		mg/Kg	1	4/5/2012 8:40:39 PM
Surr: DNOP	103	77.4-131		%REC	1	4/5/2012 8:40:39 PM
EPA METHOD 8015B: GASOLINE RANGE						Analyst: NSB
Gasoline Range Organics (GRO)	ND	4.8		mg/Kg	1	4/6/2012 11:33:13 PM
Surr: BFB	94.0	69.7-121		%REC	1	4/6/2012 11:33:13 PM
EPA METHOD 8021B: VOLATILES						Analyst: NSB
Benzene	ND	0.048		mg/Kg	1	4/6/2012 11:33:13 PM
Toluene	ND	0.048		mg/Kg	1	4/6/2012 11:33:13 PM
Ethylbenzene	ND	0.048		mg/Kg	1	4/6/2012 11:33:13 PM
Xylenes, Total	ND	0.095		mg/Kg	1	4/6/2012 11:33:13 PM
Surr: 4-Bromofluorobenzene	89.4	80-120		%REC	1	4/6/2012 11:33:13 PM

Qualifiers: * / X Value exceeds Maximum Contaminant Level.
E Value above quantitation range
J Analyte detected below quantitation limits
R RPD outside accepted recovery limits
S Spike Recovery outside accepted recovery limits

B Analyte detected in the associated Method Blank
H Holding times for preparation or analysis exceeded
ND Not Detected at the Reporting Limit
RL Reporting Detection Limit

Hall Environmental Analysis Laboratory, Inc.

Analytical Report

Lab Order 1204091

Date Reported: 4/9/2012

CLIENT: Animas Environmental Services

Client Sample ID: SB-3 25-27'

Project: Enterprise Federal 2E #1

Collection Date: 3/31/2012 9:38:00 AM

Lab ID: 1204091-009

Matrix: SOIL

Received Date: 4/3/2012 10:30:00 AM

Analyses	Result	RL	Qual	Units	DF	Date Analyzed
EPA METHOD 8015B: DIESEL RANGE ORGANICS						Analyst: JMP
Diesel Range Organics (DRO)	ND	10		mg/Kg	1	4/5/2012 9:01:54 PM
Surr: DNOP	95.5	77.4-131		%REC	1	4/5/2012 9:01:54 PM
EPA METHOD 8015B: GASOLINE RANGE						Analyst: NSB
Gasoline Range Organics (GRO)	ND	4.8		mg/Kg	1	4/7/2012 12:01:59 AM
Surr: BFB	93.8	69.7-121		%REC	1	4/7/2012 12:01:59 AM
EPA METHOD 8021B: VOLATILES						Analyst: NSB
Benzene	ND	0.048		mg/Kg	1	4/7/2012 12:01:59 AM
Toluene	ND	0.048		mg/Kg	1	4/7/2012 12:01:59 AM
Ethylbenzene	ND	0.048		mg/Kg	1	4/7/2012 12:01:59 AM
Xylenes, Total	ND	0.097		mg/Kg	1	4/7/2012 12:01:59 AM
Surr: 4-Bromofluorobenzene	89.2	80-120		%REC	1	4/7/2012 12:01:59 AM

Qualifiers: */X Value exceeds Maximum Contaminant Level.
 E Value above quantitation range
 J Analyte detected below quantitation limits
 R RPD outside accepted recovery limits
 S Spike Recovery outside accepted recovery limits

B Analyte detected in the associated Method Blank
H Holding times for preparation or analysis exceeded
ND Not Detected at the Reporting Limit
RL Reporting Detection Limit

Analytical Report

Lab Order 1204091

Date Reported: 4/9/2012

Hall Environmental Analysis Laboratory, Inc.**CLIENT:** Animas Environmental Services**Client Sample ID:** SB-3 50-52'**Project:** Enterprise Federal 2E #1**Collection Date:** 3/31/2012 10:50:00 AM**Lab ID:** 1204091-010**Matrix:** SOIL**Received Date:** 4/3/2012 10:30:00 AM

Analyses	Result	RL	Qual	Units	DF	Date Analyzed
EPA METHOD 8015B: DIESEL RANGE ORGANICS						Analyst: JMP
Diesel Range Organics (DRO)	ND	9.8		mg/Kg	1	4/5/2012 9:23:16 PM
Surr: DNOP	95.4	77.4-131		%REC	1	4/5/2012 9:23:16 PM
EPA METHOD 8015B: GASOLINE RANGE						Analyst: NSB
Gasoline Range Organics (GRO)	ND	4.7		mg/Kg	1	4/7/2012 12:30:43 AM
Surr: BFB	93.3	69.7-121		%REC	1	4/7/2012 12:30:43 AM
EPA METHOD 8021B: VOLATILES						Analyst: NSB
Benzene	ND	0.047		mg/Kg	1	4/7/2012 12:30:43 AM
Toluene	ND	0.047		mg/Kg	1	4/7/2012 12:30:43 AM
Ethylbenzene	ND	0.047		mg/Kg	1	4/7/2012 12:30:43 AM
Xylenes, Total	ND	0.095		mg/Kg	1	4/7/2012 12:30:43 AM
Surr: 4-Bromofluorobenzene	89.2	80-120		%REC	1	4/7/2012 12:30:43 AM

Qualifiers: */X Value exceeds Maximum Contaminant Level.
E Value above quantitation range
J Analyte detected below quantitation limits
R RPD outside accepted recovery limits
S Spike Recovery outside accepted recovery limits

B Analyte detected in the associated Method Blank
H Holding times for preparation or analysis exceeded
ND Not Detected at the Reporting Limit
RL Reporting Detection Limit

Hall Environmental Analysis Laboratory, Inc.

Analytical Report

Lab Order 1204091

Date Reported: 4/9/2012

CLIENT: Animas Environmental Services

Client Sample ID: SB-4 10-12'

Project: Enterprise Federal 2E #1

Collection Date: 3/31/2012 10:43:00 AM

Lab ID: 1204091-011

Matrix: SOIL

Received Date: 4/3/2012 10:30:00 AM

Analyses	Result	RL	Qual	Units	DF	Date Analyzed
EPA METHOD 8015B: DIESEL RANGE ORGANICS						Analyst: JMP
Diesel Range Organics (DRO)	ND	9.9		mg/Kg	1	4/5/2012 9:44:24 PM
Surr: DNOP	96.0	77.4-131		%REC	1	4/5/2012 9:44:24 PM
EPA METHOD 8015B: GASOLINE RANGE						Analyst: NSB
Gasoline Range Organics (GRO)	ND	4.7		mg/Kg	1	4/7/2012 12:59:26 AM
Surr: BFB	93.1	69.7-121		%REC	1	4/7/2012 12:59:26 AM
EPA METHOD 8021B: VOLATILES						Analyst: NSB
Benzene	ND	0.047		mg/Kg	1	4/7/2012 12:59:26 AM
Toluene	ND	0.047		mg/Kg	1	4/7/2012 12:59:26 AM
Ethylbenzene	ND	0.047		mg/Kg	1	4/7/2012 12:59:26 AM
Xylenes, Total	ND	0.093		mg/Kg	1	4/7/2012 12:59:26 AM
Surr: 4-Bromofluorobenzene	88.2	80-120		%REC	1	4/7/2012 12:59:26 AM

Qualifiers: */X Value exceeds Maximum Contaminant Level.
E Value above quantitation range
J Analyte detected below quantitation limits
R RPD outside accepted recovery limits
S Spike Recovery outside accepted recovery limits

B Analyte detected in the associated Method Blank
H Holding times for preparation or analysis exceeded
ND Not Detected at the Reporting Limit
RL Reporting Detection Limit

Analytical Report

Lab Order 1204091

Date Reported: 4/9/2012

Hall Environmental Analysis Laboratory, Inc.**CLIENT:** Animas Environmental Services**Client Sample ID:** SB-4 25-27'**Project:** Enterprise Federal 2E #1**Collection Date:** 3/31/2012 12:09:00 PM**Lab ID:** 1204091-012**Matrix:** SOIL**Received Date:** 4/3/2012 10:30:00 AM

Analyses	Result	RL	Qual	Units	DF	Date Analyzed
EPA METHOD 8015B: DIESEL RANGE ORGANICS						Analyst: JMP
Diesel Range Organics (DRO)	ND	10		mg/Kg	1	4/6/2012 10:18:52 AM
Surr: DNOP	91.7	77.4-131		%REC	1	4/6/2012 10:18:52 AM
EPA METHOD 8015B: GASOLINE RANGE						Analyst: NSB
Gasoline Range Organics (GRO)	ND	4.8		mg/Kg	1	4/7/2012 1:28:11 AM
Surr: BFB	93.2	69.7-121		%REC	1	4/7/2012 1:28:11 AM
EPA METHOD 8021B: VOLATILES						Analyst: NSB
Benzene	ND	0.048		mg/Kg	1	4/7/2012 1:28:11 AM
Toluene	ND	0.048		mg/Kg	1	4/7/2012 1:28:11 AM
Ethylbenzene	ND	0.048		mg/Kg	1	4/7/2012 1:28:11 AM
Xylenes, Total	ND	0.095		mg/Kg	1	4/7/2012 1:28:11 AM
Surr: 4-Bromofluorobenzene	88.5	80-120		%REC	1	4/7/2012 1:28:11 AM

Qualifiers: */X Value exceeds Maximum Contaminant Level.
 E Value above quantitation range
 J Analyte detected below quantitation limits
 R RPD outside accepted recovery limits
 S Spike Recovery outside accepted recovery limits

B Analyte detected in the associated Method Blank
H Holding times for preparation or analysis exceeded
ND Not Detected at the Reporting Limit
RL Reporting Detection Limit

QC SUMMARY REPORT

Hall Environmental Analysis Laboratory, Inc.

WO#: 1204091

09-Apr-12

Client: Animas Environmental Services

Project: Enterprise Federal 2E #1

Sample ID	MB-1383		SampType:	MBLK		TestCode:	EPA Method 8015B: Diesel Range Organics				
Client ID:	PBS		Batch ID:	1383		RunNo:	1917				
Prep Date:	4/4/2012		Analysis Date:	4/5/2012		SeqNo:	53685		Units: mg/Kg		
Analyte	Result	PQL	SPK value	SPK Ref Val	%REC	LowLimit	HighLimit	%RPD	RPDLimit	Qual	
Diesel Range Organics (DRO)	ND	10									
Surr: DNOP	8.7		10.00		86.8	77.4	131				

Sample ID	LCS-1383		SampType: LCS		TestCode: EPA Method 8015B: Diesel Range Organics					
Client ID:	LCSS		Batch ID: 1383		RunNo: 1917					
Prep Date:	4/4/2012		Analysis Date: 4/5/2012		SeqNo: 53686		Units: mg/Kg			
Analyte	Result	PQL	SPK value	SPK Ref Val	%REC	LowLimit	HighLimit	%RPD	RPDLimit	Qual
Diesel Range Organics (DRO)	40	10	50.00	0	80.1	62.7	139			
Surr: DNOP	5.4		5.000		108	77.4	131			

Sample ID	1204090-001AMS		SampType: MS		TestCode: EPA Method 8015B: Diesel Range Organics					
Client ID:	BatchQC		Batch ID: 1383		RunNo: 1917					
Prep Date:	4/4/2012		Analysis Date: 4/5/2012		SeqNo: 53976		Units: mg/Kg			
Analyte	Result	PQL	SPK value	SPK Ref Val	%REC	LowLimit	HighLimit	%RPD	RPDLimit	Qual
Diesel Range Organics (DRO)	38	9.8	48.92	0	77.3	57.2	146			
Surr: DNOP	3.3		4.892		66.9	77.4	131			S

Sample ID	1204090-001AMSD		SampType: MSD		TestCode: EPA Method 8015B: Diesel Range Organics					
Client ID:	BatchQC		Batch ID: 1383		RunNo: 1917					
Prep Date:	4/4/2012		Analysis Date: 4/5/2012		SeqNo: 53983		Units: mg/Kg			
Analyte	Result	PQL	SPK value	SPK Ref Val	%REC	LowLimit	HighLimit	%RPD	RPDLimit	Qual
Diesel Range Organics (DRO)	38	9.7	48.64	0	78.4	57.2	146	0.818	26.7	
Surr: DNOP	2.7		4.864		55.9	77.4	131	0	0	S

Sample ID	MB-1394		SampType: MBLK		TestCode: EPA Method 8015B: Diesel Range Organics					
Client ID:	PBS		Batch ID: 1394		RunNo: 1950					
Prep Date:	4/5/2012		Analysis Date: 4/6/2012		SeqNo: 54611		Units: mg/Kg			
Analyte	Result	PQL	SPK value	SPK Ref Val	%REC	LowLimit	HighLimit	%RPD	RPDLimit	Qual
Diesel Range Organics (DRO)	ND	10								
Surr: DNOP	8.9		10.00		88.6	77.4	131			

Sample ID	LCS-1394		SampType: LCS		TestCode: EPA Method 8015B: Diesel Range Organics					
Client ID:	LCSS		Batch ID: 1394		RunNo: 1950					
Prep Date:	4/5/2012		Analysis Date: 4/6/2012		SeqNo: 54612		Units: mg/Kg			
Analyte	Result	PQL	SPK value	SPK Ref Val	%REC	LowLimit	HighLimit	%RPD	RPDLimit	Qual
Diesel Range Organics (DRO)	40	10	50.00	0	79.1	62.7	139			
Surr: DNOP	4.2		5.000		83.8	77.4	131			

Qualifiers:

* / X Value exceeds Maximum Contaminant Level.
E Value above quantitation range
J Analyte detected below quantitation limits
R RPD outside accepted recovery limits

B Analyte detected in the associated Method Blank
H Holding times for preparation or analysis exceeded
ND Not Detected at the Reporting Limit
RL Reporting Detection Limit

QC SUMMARY REPORT

Hall Environmental Analysis Laboratory, Inc.

WO#: 1204091

09-Apr-12

Client: Animas Environmental Services

Project: Enterprise Federal 2E #1

Sample ID	1204091-012AMS	SampType	MS	TestCode	EPA Method 8015B: Diesel Range Organics					
Client ID	SB-4 25-27'	Batch ID	1394	RunNo	1950					
Prep Date	4/5/2012	Analysis Date	4/6/2012	SeqNo	54715	Units	mg/Kg			
Analyte	Result	PQL	SPK value	SPK Ref Val	%REC	LowLimit	HighLimit	%RPD	RPDLimit	Qual
Diesel Range Organics (DRO)	40	10	50.40	0	78.5	57.2	146			
Surr: DNOP	4.3		5.040		85.8	77.4	131			

Sample ID	1204091-012AMSD	SampType	MSD	TestCode	EPA Method 8015B: Diesel Range Organics					
Client ID	SB-4 25-27'	Batch ID	1394	RunNo	1950					
Prep Date	4/5/2012	Analysis Date	4/6/2012	SeqNo	54716	Units	mg/Kg			
Analyte	Result	PQL	SPK value	SPK Ref Val	%REC	LowLimit	HighLimit	%RPD	RPDLimit	Qual
Diesel Range Organics (DRO)	42	10	50.61	0	83.4	57.2	146	6.41	26.7	
Surr: DNOP	4.3		5.061		85.1	77.4	131	0	0	

Qualifiers:

*X Value exceeds Maximum Contaminant Level.
E Value above quantitation range
J Analyte detected below quantitation limits
R RPD outside accepted recovery limits

B Analyte detected in the associated Method Blank
H Holding times for preparation or analysis exceeded
ND Not Detected at the Reporting Limit
RL Reporting Detection Limit

QC SUMMARY REPORT

Hall Environmental Analysis Laboratory, Inc.

WO#: 1204091

09-Apr-12

Client: Animas Environmental Services

Project: Enterprise Federal 2E #1

Sample ID	MB-1380		SampType:	MBLK		TestCode:	EPA Method 8015B: Gasoline Range				
Client ID:	PBS		Batch ID:	1380		RunNo:	1936				
Prep Date:	4/4/2012		Analysis Date:	4/6/2012		SeqNo:	54558		Units: mg/Kg		
Analyte	Result	PQL	SPK value	SPK Ref Val	%REC	LowLimit	HighLimit	%RPD	RPDLimit	Qual	
Gasoline Range Organics (GRO)	ND	5.0									
Surr: BFB	940		1,000		94.4	69.7	121				

Sample ID	MB-1381		SampType:	MBLK		TestCode:	EPA Method 8015B: Gasoline Range				
Client ID:	PBS		Batch ID:	1381		RunNo:	1936				
Prep Date:	4/4/2012		Analysis Date:	4/5/2012		SeqNo:	54559		Units: mg/Kg		
Analyte	Result	PQL	SPK value	SPK Ref Val	%REC	LowLimit	HighLimit	%RPD	RPDLimit	Qual	
Gasoline Range Organics (GRO)	ND	5.0									
Surr: BFB	940		1,000		94.1	69.7	121				

Sample ID	LCS-1380		SampType: LCS		TestCode: EPA Method 8015B: Gasoline Range					
Client ID:	LCSS		Batch ID: 1380		RunNo: 1936					
Prep Date:	4/4/2012		Analysis Date: 4/6/2012		SeqNo: 54560		Units: mg/Kg			
Analyte	Result	PQL	SPK value	SPK Ref Val	%REC	LowLimit	HighLimit	%RPD	RPDLimit	Qual
Gasoline Range Organics (GRO)	30	5.0	25.00	0	118	98.5	133			
Surr: BFB	1,000		1,000		103	69.7	121			

Sample ID	LCS-1381		SampType: LCS		TestCode: EPA Method 8015B: Gasoline Range					
Client ID:	LCSS		Batch ID: 1381		RunNo: 1936					
Prep Date:	4/4/2012		Analysis Date: 4/5/2012		SeqNo: 54561		Units: mg/Kg			
Analyte	Result	PQL	SPK value	SPK Ref Val	%REC	LowLimit	HighLimit	%RPD	RPDLimit	Qual
Gasoline Range Organics (GRO)	29	5.0	25.00	0	116	98.5	133			
Surr: BFB	1,000		1,000		104	69.7	121			

Sample ID	1204090-001AMS		SampType: MS		TestCode: EPA Method 8015B: Gasoline Range					
Client ID:	BatchQC		Batch ID: 1380		RunNo: 1936					
Prep Date:	4/4/2012		Analysis Date: 4/6/2012		SeqNo: 54582		Units: mg/Kg			
Analyte	Result	PQL	SPK value	SPK Ref Val	%REC	LowLimit	HighLimit	%RPD	RPDLimit	Qual
Gasoline Range Organics (GRO)	29	4.8	23.85	0	121	85.4	147			
Surr: BFB	980		954.2		103	69.7	121			

Sample ID	1204090-001AMSD		SampType: MSD		TestCode: EPA Method 8015B: Gasoline Range					
Client ID:	BatchQC		Batch ID: 1380		RunNo: 1936					
Prep Date:	4/4/2012		Analysis Date: 4/6/2012		SeqNo: 54583		Units: mg/Kg			
Analyte	Result	PQL	SPK value	SPK Ref Val	%REC	LowLimit	HighLimit	%RPD	RPDLimit	Qual
Gasoline Range Organics (GRO)	29	4.7	23.34	0	125	85.4	147	0.691	19.2	
Surr: BFB	980		933.7		104	69.7	121	0	0	

Qualifiers:

* / X Value exceeds Maximum Contaminant Level.
E Value above quantitation range
J Analyte detected below quantitation limits
R RPD outside accepted recovery limits

B Analyte detected in the associated Method Blank
H Holding times for preparation or analysis exceeded
ND Not Detected at the Reporting Limit
RL Reporting Detection Limit

QC SUMMARY REPORT

Hall Environmental Analysis Laboratory, Inc.

WO#: 1204091

09-Apr-12

Client: Animas Environmental Services

Project: Enterprise Federal 2E #1

Sample ID	1204091-012AMS	SampType:	MS	TestCode:	EPA Method 8015B: Gasoline Range					
Client ID:	SB-4 25-27'	Batch ID:	1381	RunNo:	1973					
Prep Date:	4/4/2012	Analysis Date:	4/7/2012	SeqNo:	55021	Units:	mg/Kg			
Analyte	Result	PQL	SPK value	SPK Ref Val	%REC	LowLimit	HighLimit	%RPD	RPDLimit	Qual
Gasoline Range Organics (GRO)	27	4.9	24.56	0	109	85.4	147			
Surr: BFB	1,000		982.3		101	69.7	121			

Sample ID	1204091-012AMSD		SampType:	MSD		TestCode:	EPA Method 8015B: Gasoline Range				
Client ID:	SB-4 25-27'		Batch ID:	1381		RunNo:	1973				
Prep Date:	4/4/2012		Analysis Date:	4/7/2012		SeqNo:	55022		Units:	mg/Kg	
Analyte	Result	PQL	SPK value	SPK Ref Val	%REC	LowLimit	HighLimit	%RPD	RPDLimit	Qual	
Gasoline Range Organics (GRO)	28	5.0	24.75	0	113	85.4	147	4.55	19.2		
Surr: BFB	1,000		990.1		102	69.7	121	0	0		

Qualifiers:

* / X Value exceeds Maximum Contaminant Level.
E Value above quantitation range
J Analyte detected below quantitation limits
R RPD outside accepted recovery limits

B Analyte detected in the associated Method Blank
H Holding times for preparation or analysis exceeded
ND Not Detected at the Reporting Limit
RL Reporting Detection Limit

QC SUMMARY REPORT

Hall Environmental Analysis Laboratory, Inc.

WO#: 1204091

09-Apr-12

Client: Animas Environmental Services

Project: Enterprise Federal 2E #1

Sample ID	MB-1380		SampType:	MBLK		TestCode:	EPA Method 8021B: Volatiles			
Client ID:	PBS		Batch ID:	1380		RunNo:	1937			
Prep Date:	4/4/2012		Analysis Date:	4/6/2012		SeqNo:	54587		Units: mg/Kg	
Analyte	Result	PQL	SPK value	SPK Ref Val	%REC	LowLimit	HighLimit	%RPD	RPDLimit	Qual
Benzene	ND	0.050								
Toluene	ND	0.050								
Ethylbenzene	ND	0.050								
Xylenes, Total	ND	0.10								
Surr: 4-Bromofluorobenzene	0.91		1.000		90.7	80	120			

Sample ID	MB-1381		SampType:	MBLK		TestCode:	EPA Method 8021B: Volatiles			
Client ID:	PBS		Batch ID:	1381		RunNo:	1937			
Prep Date:	4/4/2012		Analysis Date:	4/5/2012		SeqNo:	54588		Units: mg/Kg	
Analyte	Result	PQL	SPK value	SPK Ref Val	%REC	LowLimit	HighLimit	%RPD	RPDLimit	Qual
Benzene	ND	0.050								
Toluene	ND	0.050								
Ethylbenzene	ND	0.050								
Xylenes, Total	ND	0.10								
Surr: 4-Bromofluorobenzene	0.89		1.000		89.3	80	120			

Sample ID	LCS-1380		SampType:	LCS		TestCode:	EPA Method 8021B: Volatiles			
Client ID:	LCSS		Batch ID:	1380		RunNo:	1937			
Prep Date:	4/4/2012		Analysis Date:	4/6/2012		SeqNo:	54590		Units: mg/Kg	
Analyte	Result	PQL	SPK value	SPK Ref Val	%REC	LowLimit	HighLimit	%RPD	RPDLimit	Qual
Benzene	0.96	0.050	1.000	0	95.5	83.3	107			
Toluene	0.96	0.050	1.000	0	96.1	74.3	115			
Ethylbenzene	0.96	0.050	1.000	0	95.6	80.9	122			
Xylenes, Total	2.9	0.10	3.000	0	96.8	85.2	123			
Surr: 4-Bromofluorobenzene	0.94		1.000		94.3	80	120			

Sample ID	LCS-1381		SampType:	LCS		TestCode:	EPA Method 8021B: Volatiles			
Client ID:	LCSS		Batch ID:	1381		RunNo:	1937			
Prep Date:	4/4/2012		Analysis Date:	4/5/2012		SeqNo:	54591		Units: mg/Kg	
Analyte	Result	PQL	SPK value	SPK Ref Val	%REC	LowLimit	HighLimit	%RPD	RPDLimit	Qual
Benzene	0.94	0.050	1.000	0	93.7	83.3	107			
Toluene	0.96	0.050	1.000	0	96.4	74.3	115			
Ethylbenzene	0.96	0.050	1.000	0	95.6	80.9	122			
Xylenes, Total	2.9	0.10	3.000	0	96.7	85.2	123			
Surr: 4-Bromofluorobenzene	0.94		1.000		93.8	80	120			

Qualifiers:

* / X Value exceeds Maximum Contaminant Level.
E Value above quantitation range
J Analyte detected below quantitation limits
R RPD outside accepted recovery limits

B Analyte detected in the associated Method Blank
H Holding times for preparation or analysis exceeded
ND Not Detected at the Reporting Limit
RL Reporting Detection Limit

QC SUMMARY REPORT

Hall Environmental Analysis Laboratory, Inc.

WO#: 1204091

09-Apr-12

Client: Animas Environmental Services

Project: Enterprise Federal 2E #1

Sample ID	1204091-001AMS	SampType:	MS	TestCode:	EPA Method 8021B: Volatiles					
Client ID:	SB-1 2-4'	Batch ID:	1380	RunNo:	1974					
Prep Date:	4/4/2012	Analysis Date:	4/6/2012	SeqNo:	55046	Units:	mg/Kg			
Analyte	Result	PQL	SPK value	SPK Ref Val	%REC	LowLimit	HighLimit	%RPD	RPDLimit	Qual
Benzene	0.86	0.047	0.9416	0	90.9	67.2	113			
Toluene	0.89	0.047	0.9416	0	94.1	62.1	116			
Ethylbenzene	0.89	0.047	0.9416	0	94.9	67.9	127			
Xylenes, Total	2.7	0.094	2.825	0	95.2	60.6	134			
Surr: 4-Bromofluorobenzene	0.87		0.9416		92.6	80	120			

Sample ID	1204091-001AMSD	SampType:	MSD	TestCode: EPA Method 8021B: Volatiles						
Client ID:	SB-1 2-4'	Batch ID:	1380	RunNo: 1974						
Prep Date:	4/4/2012	Analysis Date:	4/6/2012	SeqNo:	55047	Units: mg/Kg				
Analyte	Result	PQL	SPK value	SPK Ref Val	%REC	LowLimit	HighLimit	%RPD	RPDLimit	Qual
Benzene	0.82	0.047	0.9425	0	87.5	67.2	113	3.72	14.3	
Toluene	0.85	0.047	0.9425	0	90.6	62.1	116	3.72	15.9	
Ethylbenzene	0.86	0.047	0.9425	0	91.6	67.9	127	3.39	14.4	
Xylenes, Total	2.6	0.094	2.828	0	92.3	60.6	134	3.04	12.6	
Surr: 4-Bromofluorobenzene	0.86		0.9425		91.3	80	120	0	0	

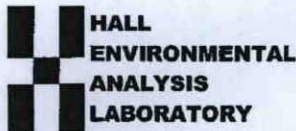
Sample ID	1204096-001AMS	SampType:	MS	TestCode:	EPA Method 8021B: Volatiles					
Client ID:	BatchQC	Batch ID:	1381	RunNo:	1974					
Prep Date:	4/4/2012	Analysis Date:	4/7/2012	SeqNo:	55048	Units:	mg/Kg			
Analyte	Result	PQL	SPK value	SPK Ref Val	%REC	LowLimit	HighLimit	%RPD	RPDLimit	Qual
Benzene	0.92	0.048	0.9634	0	95.0	67.2	113			
Toluene	0.95	0.048	0.9634	0	99.1	62.1	116			
Ethylbenzene	0.95	0.048	0.9634	0	98.9	67.9	127			
Xylenes, Total	2.9	0.096	2.890	0	100	60.6	134			
Surr: 4-Bromofluorobenzene	0.90		0.9634		93.0	80	120			

Sample ID	1204096-001AMSD	SampType:	MSD	TestCode:	EPA Method 8021B: Volatiles					
Client ID:	BatchQC	Batch ID:	1381	RunNo:	1974					
Prep Date:	4/4/2012	Analysis Date:	4/7/2012	SeqNo:	55049	Units:	mg/Kg			
Analyte	Result	PQL	SPK value	SPK Ref Val	%REC	LowLimit	HighLimit	%RPD	RPDLimit	Qual
Benzene	0.90	0.048	0.9551	0	94.7	67.2	113	1.17	14.3	
Toluene	0.94	0.048	0.9551	0	98.5	62.1	116	1.48	15.9	
Ethylbenzene	0.95	0.048	0.9551	0	99.5	67.9	127	0.241	14.4	
Xylenes, Total	2.8	0.096	2.865	0	99.1	60.6	134	1.87	12.6	
Surr: 4-Bromofluorobenzene	0.89		0.9551		93.0	80	120	0	0	

Qualifiers:

* / X Value exceeds Maximum Contaminant Level.
E Value above quantitation range
J Analyte detected below quantitation limits
R RPD outside accepted recovery limits

B Analyte detected in the associated Method Blank
H Holding times for preparation or analysis exceeded
ND Not Detected at the Reporting Limit
RL Reporting Detection Limit



Hall Environmental Analysis Laboratory
4901 Hawkins NE
Albuquerque, NM 87105
TEL: 505-345-3975 FAX: 505-345-4101
Website: www.hallenvironmental.com

Sample Log-In Check List

Client Name: Animas Environmental

Work Order Number: 1204091

Received by/date:

LM

04/03/12

Logged By: Michelle Garcia

4/3/2012 10:30:00 AM

Michelle Garcia

Completed By: Michelle Garcia

4/3/2012 11:15:17 AM

Michelle Garcia

Reviewed By:

04/03/12

Chain of Custody

1. Were seals intact?
2. Is Chain of Custody complete?
3. How was the sample delivered?

Yes ☐ No ☐ Not Present ☒

Yes ☒ No ☐ Not Present ☐

Greyhound

Log In

4. Coolers are present? (see 19. for cooler specific information)

Yes ☒ No ☐ NA ☐

5. Was an attempt made to cool the samples?

Yes ☒ No ☐ NA ☐

6. Were all samples received at a temperature of $>0^{\circ}\text{C}$ to 6.0°C

Yes ☒ No ☐ NA ☐

7. Sample(s) in proper container(s)?

Yes ☒ No ☐

8. Sufficient sample volume for indicated test(s)?

Yes ☒ No ☐

9. Are samples (except VOA and ONG) properly preserved?

Yes ☒ No ☐

10. Was preservative added to bottles?

Yes ☐ No ☒ NA ☐

11. VOA vials have zero headspace?

Yes ☐ No ☐ No VOA Vials ☒

12. Were any sample containers received broken?

Yes ☐ No ☒

13. Does paperwork match bottle labels?
(Note discrepancies on chain of custody)

Yes ☒ No ☐

14. Are matrices correctly identified on Chain of Custody?

Yes ☒ No ☐

15. Is it clear what analyses were requested?

Yes ☒ No ☐

16. Were all holding times able to be met?

Yes ☒ No ☐

(If no, notify customer for authorization.)

of preserved
bottles checked
for pH:

(<2 or >12 unless noted)

Adjusted? _____

Checked by: _____

Special Handling (if applicable)

17. Was client notified of all discrepancies with this order?

Yes ☐ No ☐ NA ☒

Person Notified: _____

Date: _____

By Whom: _____

Via: ☐ eMail ☐ Phone ☐ Fax ☐ In Person

Regarding: _____

Client Instructions: _____

18. Additional remarks:

19. Cooler Information

Cooler No	Temp $^{\circ}\text{C}$	Condition	Seal Intact	Seal No	Seal Date	Signed By
1	2.3	Good	Yes			

Chain-of-Custody Record

Client: Animas Environmental Services

Mailing Address: 624 E Comanche Farmington NM
Farmington, NM 87401

Phone #: 505-564-2281

email or Fax#: 505-324-2022

QA/QC Package:
☒ X Standard ☐ Level 4 (Full Validation)

Accreditation:
☐ NELAP ☐ Other _____

☐ EDD (Type) _____

☒ X Standard ☐ Rush

Project Name: Enterprise Federal 2E #1

Project #:

Project Manager: Ross Kennemer

Sampler: Thomas Long

On Ice: ☒ Yes ☐ No

Sample Temperature: 2.3



HALL ENVIRONMENTAL ANALYSIS LABORATORY

www.hallenvironmental.com

4901 Hawkins NE - Albuquerque, NM 87109

Tel. 505-345-3975 Fax 505-345-4107

Analysis Request

Date	Time	Matrix	Sample Request ID	Container Type and #	Preservative Type	HEAL No.	8021 BTEX	8015 DRO/GRO												
3/30/2012	12:33	Soil	SB-1 2-4'	4 oz Jar	Ice	- 001	x	x												
3/30/2012	12:52	Soil	SB-1 12-14'	4 oz Jar	Ice	- 002	x	x												
3/30/2012	13:27	Soil	SB-1 28-30'	4 oz Jar	Ice	- 003	x	x												
3/30/2012	13:58	Soil	SB-2 10-12'	4 oz Jar	Ice	- 004	x	x												
3/30/2012	14:04	Soil	SB-2 18-20'	4 oz Jar	Ice	- 005	x	x												
3/30/2012	14:27	Soil	SB-2 26-28'	4 oz Jar	Ice	- 006	x	x												
3/30/2012	16:29	Soil	SB-2 48-50'	4 oz Jar	Ice	- 007	x	x												
3/31/2012	9:10	Soil	SB-3 5-7'	4 oz Jar	Ice	- 008	x	x												
3/31/2012	9:38	Soil	SB-3 25-27'	4 oz Jar	Ice	- 009	x	x												
3/31/2012	10:50	Soil	SB-3 50-52'	4 oz Jar	Ice	- 010	x	x												
3/31/2012	10:43	Soil	SB-4 10-12'	4 oz Jar	Ice	- 011	x	x												
3/31/2012	12:09	Soil	SB-4 25-27'	4 oz Jar	Ice	- 012	x	x												

Date: 4/2/12 Time: 1604 Relinquished by: *[Signature]*

Date: 4/2/12 Time: 1647 Relinquished by: *[Signature]*

Received by: *[Signature]* Date: 4/2/12 Time: 1604

Received by: *[Signature]* Date: 04/03/12 Time: 1031

Remarks: Bill to Enterprise

If necessary, samples submitted to Hall Environmental may be subcontracted to other accredited laboratories. This serves as notice of this possibility. Any sub-contracted data will be clearly notated on the analytical report.



*Hall Environmental Analysis Laboratory
4901 Hawkins NE
Albuquerque, NM 87109
TEL: 505-345-3975 FAX: 505-345-4107
Website: www.hallenvironmental.com*

April 12, 2012

Ross Kennemer

Animas Environmental Services
624 East Comanche

Farmington, NM 87401

TEL: (505) 564-2281

FAX (505) 324-2022

RE: Enterprise Federal 2E #1

OrderNo.: 1204096

Dear Ross Kennemer:

Hall Environmental Analysis Laboratory received 5 sample(s) on 4/3/2012 for the analyses presented in the following report.

These were analyzed according to EPA procedures or equivalent. To access our accredited tests please go to www.hallenvironmental.com or the state specific web sites. See the sample checklist and/or the Chain of Custody for information regarding the sample receipt temperature and preservation. Data qualifiers or a narrative will be provided if the sample analysis or analytical quality control parameters require a flag. All samples are reported as received unless otherwise indicated.

Please don't hesitate to contact HEAL for any additional information or clarifications.

Sincerely,

Andy Freeman

Laboratory Manager

4901 Hawkins NE

Albuquerque, NM 87109

Hall Environmental Analysis Laboratory, Inc.**Analytical Report**

Lab Order 1204096

Date Reported: 4/12/2012

CLIENT: Animas Environmental Services**Client Sample ID:** SB-4 47'**Project:** Enterprise Federal 2E #1**Collection Date:** 3/31/2012 1:01:00 PM**Lab ID:** 1204096-001**Matrix:** SOIL**Received Date:** 4/3/2012 10:30:00 AM

Analyses	Result	RL	Qual	Units	DF	Date Analyzed
EPA METHOD 8015B: DIESEL RANGE ORGANICS						Analyst: JMB
Diesel Range Organics (DRO)	ND	9.6		mg/Kg	1	4/6/2012 12:26:13 PM
Surr: DNOP	92.2	77.4-131		%REC	1	4/6/2012 12:26:13 PM
EPA METHOD 8015B: GASOLINE RANGE						Analyst: NSB
Gasoline Range Organics (GRO)	ND	5.0		mg/Kg	1	4/7/2012 4:20:57 AM
Surr: BFB	93.7	69.7-121		%REC	1	4/7/2012 4:20:57 AM
EPA METHOD 8021B: VOLATILES						Analyst: NSB
Benzene	ND	0.050		mg/Kg	1	4/7/2012 4:20:57 AM
Toluene	ND	0.050		mg/Kg	1	4/7/2012 4:20:57 AM
Ethylbenzene	ND	0.050		mg/Kg	1	4/7/2012 4:20:57 AM
Xylenes, Total	ND	0.10		mg/Kg	1	4/7/2012 4:20:57 AM
Surr: 4-Bromofluorobenzene	89.6	80-120		%REC	1	4/7/2012 4:20:57 AM

Qualifiers: */X Value exceeds Maximum Contaminant Level.
E Value above quantitation range
J Analyte detected below quantitation limits
R RPD outside accepted recovery limits
S Spike Recovery outside accepted recovery limits

B Analyte detected in the associated Method Blank
H Holding times for preparation or analysis exceeded
ND Not Detected at the Reporting Limit
RL Reporting Detection Limit

Hall Environmental Analysis Laboratory, Inc.**Analytical Report**

Lab Order 1204096

Date Reported: 4/12/2012

CLIENT: Animas Environmental Services**Client Sample ID:** SB-5 15-17'**Project:** Enterprise Federal 2E #1**Collection Date:** 3/31/2012 2:08:00 PM**Lab ID:** 1204096-002**Matrix:** SOIL**Received Date:** 4/3/2012 10:30:00 AM

Analyses	Result	RL	Qual	Units	DF	Date Analyzed
EPA METHOD 8015B: DIESEL RANGE ORGANICS						Analyst: JMP
Diesel Range Organics (DRO)	ND	10		mg/Kg	1	4/6/2012 1:21:03 PM
Surr: DNOP	91.4	77.4-131		%REC	1	4/6/2012 1:21:03 PM
EPA METHOD 8015B: GASOLINE RANGE						Analyst: NSB
Gasoline Range Organics (GRO)	ND	4.7		mg/Kg	1	4/7/2012 5:46:53 AM
Surr: BFB	94.0	69.7-121		%REC	1	4/7/2012 5:46:53 AM
EPA METHOD 8021B: VOLATILES						Analyst: NSB
Benzene	ND	0.047		mg/Kg	1	4/7/2012 5:46:53 AM
Toluene	ND	0.047		mg/Kg	1	4/7/2012 5:46:53 AM
Ethylbenzene	ND	0.047		mg/Kg	1	4/7/2012 5:46:53 AM
Xylenes, Total	ND	0.094		mg/Kg	1	4/7/2012 5:46:53 AM
Surr: 4-Bromofluorobenzene	89.7	80-120		%REC	1	4/7/2012 5:46:53 AM

Qualifiers: */X Value exceeds Maximum Contaminant Level.
E Value above quantitation range
J Analyte detected below quantitation limits
R RPD outside accepted recovery limits
S Spike Recovery outside accepted recovery limits

B Analyte detected in the associated Method Blank
H Holding times for preparation or analysis exceeded
ND Not Detected at the Reporting Limit
RL Reporting Detection Limit

Hall Environmental Analysis Laboratory, Inc.**Analytical Report**

Lab Order 1204096

Date Reported: 4/12/2012

CLIENT: Animas Environmental Services**Client Sample ID:** SB-5 20-22'**Project:** Enterprise Federal 2E #1**Collection Date:** 3/31/2012 2:30:00 PM**Lab ID:** 1204096-003**Matrix:** SOIL**Received Date:** 4/3/2012 10:30:00 AM

Analyses	Result	RL	Qual	Units	DF	Date Analyzed
EPA METHOD 8015B: DIESEL RANGE ORGANICS						Analyst: JMP
Diesel Range Organics (DRO)	ND	9.9		mg/Kg	1	4/6/2012 1:42:28 PM
Surr: DNOP	91.9	77.4-131		%REC	1	4/6/2012 1:42:28 PM
EPA METHOD 8015B: GASOLINE RANGE						Analyst: NSB
Gasoline Range Organics (GRO)	ND	4.6		mg/Kg	1	4/9/2012 1:33:37 PM
Surr: BFB	101	69.7-121		%REC	1	4/9/2012 1:33:37 PM
EPA METHOD 8021B: VOLATILES						Analyst: NSB
Benzene	ND	0.046		mg/Kg	1	4/9/2012 1:33:37 PM
Toluene	ND	0.046		mg/Kg	1	4/9/2012 1:33:37 PM
Ethylbenzene	ND	0.046		mg/Kg	1	4/9/2012 1:33:37 PM
Xylenes, Total	ND	0.093		mg/Kg	1	4/9/2012 1:33:37 PM
Surr: 4-Bromofluorobenzene	97.4	80-120		%REC	1	4/9/2012 1:33:37 PM

Qualifiers: */X Value exceeds Maximum Contaminant Level,
E Value above quantitation range
J Analyte detected below quantitation limits
R RPD outside accepted recovery limits
S Spike Recovery outside accepted recovery limits

B Analyte detected in the associated Method Blank
H Holding times for preparation or analysis exceeded
ND Not Detected at the Reporting Limit
RL Reporting Detection Limit

Hall Environmental Analysis Laboratory, Inc.**Analytical Report**

Lab Order 1204096

Date Reported: 4/12/2012

CLIENT: Animas Environmental Services**Client Sample ID:** SB-5 47'**Project:** Enterprise Federal 2E #1**Collection Date:** 3/31/2012 3:40:00 PM**Lab ID:** 1204096-004**Matrix:** SOIL**Received Date:** 4/3/2012 10:30:00 AM

Analyses	Result	RL	Qual	Units	DF	Date Analyzed
EPA METHOD 8015B: DIESEL RANGE ORGANICS						Analyst: JMP
Diesel Range Organics (DRO)	ND	10		mg/Kg	1	4/6/2012 2:03:47 PM
Surr: DNOP	92.9	77.4-131		%REC	1	4/6/2012 2:03:47 PM
EPA METHOD 8015B: GASOLINE RANGE						Analyst: NSB
Gasoline Range Organics (GRO)	ND	5.0		mg/Kg	1	4/9/2012 2:02:30 PM
Surr: BFB	99.6	69.7-121		%REC	1	4/9/2012 2:02:30 PM
EPA METHOD 8021B: VOLATILES						Analyst: NSB
Benzene	ND	0.050		mg/Kg	1	4/9/2012 2:02:30 PM
Toluene	ND	0.050		mg/Kg	1	4/9/2012 2:02:30 PM
Ethylbenzene	ND	0.050		mg/Kg	1	4/9/2012 2:02:30 PM
Xylenes, Total	ND	0.10		mg/Kg	1	4/9/2012 2:02:30 PM
Surr: 4-Bromofluorobenzene	95.8	80-120		%REC	1	4/9/2012 2:02:30 PM

Qualifiers: */X Value exceeds Maximum Contaminant Level.
 E Value above quantitation range
 J Analyte detected below quantitation limits
 R RPD outside accepted recovery limits
 S Spike Recovery outside accepted recovery limits

B Analyte detected in the associated Method Blank
H Holding times for preparation or analysis exceeded
ND Not Detected at the Reporting Limit
RL Reporting Detection Limit

Hall Environmental Analysis Laboratory, Inc.

Analytical Report

Lab Order 1204096

Date Reported: 4/12/2012

CLIENT: Animas Environmental Services

Client Sample ID: SB-2w

Project: Enterprise Federal 2E #1

Collection Date: 3/31/2012 8:00:00 AM

Lab ID: 1204096-005

Matrix: AQUEOUS

Received Date: 4/3/2012 10:30:00 AM

Analyses	Result	RL	Qual	Units	DF	Date Analyzed
EPA METHOD 8021B: VOLATILES						Analyst: NSB
Benzene	1,500	50		µg/L	50	4/9/2012 4:09:44 PM
Toluene	3,500	50		µg/L	50	4/9/2012 4:09:44 PM
Ethylbenzene	260	50		µg/L	50	4/9/2012 4:09:44 PM
Xylenes, Total	1,900	100		µg/L	50	4/9/2012 4:09:44 PM
Surr: 4-Bromofluorobenzene	87.3	55-140		%REC	50	4/9/2012 4:09:44 PM

Qualifiers: */X Value exceeds Maximum Contaminant Level.
 E Value above quantitation range
 J Analyte detected below quantitation limits
 R RPD outside accepted recovery limits
 S Spike Recovery outside accepted recovery limits

B Analyte detected in the associated Method Blank
H Holding times for preparation or analysis exceeded
ND Not Detected at the Reporting Limit
RL Reporting Detection Limit

QC SUMMARY REPORT

Hall Environmental Analysis Laboratory, Inc.

WO#: 1204096

12-Apr-12

Client: Animas Environmental Services

Project: Enterprise Federal 2E #1

Sample ID	MB-1394		SampType:	MBLK		TestCode:	EPA Method 8015B: Diesel Range Organics				
Client ID:	PBS		Batch ID:	1394		RunNo:	1950				
Prep Date:	4/5/2012		Analysis Date:	4/6/2012		SeqNo:	54611		Units: mg/Kg		
Analyte	Result	PQL	SPK value	SPK Ref Val	%REC	LowLimit	HighLimit	%RPD	RPDLimit	Qual	
Diesel Range Organics (DRO)	ND	10									
Surr: DNOP	8.9		10.00		88.6	77.4	131				

Sample ID	LCS-1394		SampType:	LCS		TestCode:	EPA Method 8015B: Diesel Range Organics				
Client ID:	LCSS		Batch ID:	1394		RunNo:	1950				
Prep Date:	4/5/2012		Analysis Date:	4/6/2012		SeqNo:	54612		Units: mg/Kg		
Analyte	Result	PQL	SPK value	SPK Ref Val	%REC	LowLimit	HighLimit	%RPD	RPDLimit	Qual	
Diesel Range Organics (DRO)	40	10	50.00	0	79.1	62.7	139				
Surr: DNOP	4.2		5.000		83.8	77.4	131				

Sample ID	1204091-012AMS		SampType: MS		TestCode: EPA Method 8015B: Diesel Range Organics					
Client ID:	BatchQC		Batch ID: 1394		RunNo: 1950					
Prep Date:	4/5/2012		Analysis Date: 4/6/2012		SeqNo: 54715		Units: mg/Kg			
Analyte	Result	PQL	SPK value	SPK Ref Val	%REC	LowLimit	HighLimit	%RPD	RPDLimit	Qual
Diesel Range Organics (DRO)	40	10	50.40	0	78.5	57.2	146			
Surr: DNOP	4.3		5.040		85.8	77.4	131			

Sample ID	1204091-012AMSD		SampType:	MSD		TestCode:	EPA Method 8015B: Diesel Range Organics				
Client ID:	BatchQC		Batch ID:	1394		RunNo:	1950				
Prep Date:	4/5/2012		Analysis Date:	4/6/2012		SeqNo:	54716		Units: mg/Kg		
Analyte	Result	PQL	SPK value	SPK Ref Val	%REC	LowLimit	HighLimit	%RPD	RPDLimit	Qual	
Diesel Range Organics (DRO)	42	10	50.61	0	83.4	57.2	146	6.41	26.7		
Surr: DNOP	4.3		5.061		85.1	77.4	131	0	0		

Qualifiers:

*X Value exceeds Maximum Contaminant Level.
E Value above quantitation range
J Analyte detected below quantitation limits
R RPD outside accepted recovery limits

B Analyte detected in the associated Method Blank
H Holding times for preparation or analysis exceeded
ND Not Detected at the Reporting Limit
RL Reporting Detection Limit

QC SUMMARY REPORT

Hall Environmental Analysis Laboratory, Inc.

WO#: 1204096

12-Apr-12

Client: Animas Environmental Services

Project: Enterprise Federal 2E #1

Sample ID	MB-1381	SampType:	MBLK	TestCode:	EPA Method 8015B: Gasoline Range					
Client ID:	PBS	Batch ID:	1381	RunNo:	1936					
Prep Date:	4/4/2012	Analysis Date:	4/5/2012	SeqNo:	54559	Units:	mg/Kg			
Analyte	Result	PQL	SPK value	SPK Ref Val	%REC	LowLimit	HighLimit	%RPD	RPDLimit	Qual
Gasoline Range Organics (GRO)	ND	5.0								
Surr: BFB	940		1,000		94.1	69.7	121			

Sample ID	LCS-1381	SampType: LCS			TestCode: EPA Method 8015B: Gasoline Range					
Client ID:	LCSS	Batch ID: 1381			RunNo: 1936					
Prep Date:	4/4/2012	Analysis Date: 4/5/2012			SeqNo: 54561		Units: mg/Kg			
Analyte	Result	PQL	SPK value	SPK Ref Val	%REC	LowLimit	HighLimit	%RPD	RPDLimit	Qual
Gasoline Range Organics (GRO)	29	5.0	25.00	0	116	98.5	133			
Surr: BFB	1,000		1,000		104	69.7	121			

Sample ID	1204091-012AMS		SampType:	MS		TestCode:	EPA Method 8015B: Gasoline Range				
Client ID:	BatchQC		Batch ID:	1381		RunNo:	1973				
Prep Date:	4/4/2012		Analysis Date:	4/7/2012		SeqNo:	55021		Units: mg/Kg		
Analyte	Result	PQL	SPK value	SPK Ref Val	%REC	LowLimit	HighLimit	%RPD	RPDLimit	Qual	
Gasoline Range Organics (GRO)	27	4.9	24.56	0	109	85.4	147				
Surr: BFB	1,000		982.3		101	69.7	121				

Sample ID	1204091-012AMSD		SampType:	MSD		TestCode:	EPA Method 8015B: Gasoline Range				
Client ID:	BatchQC		Batch ID:	1381		RunNo:	1973				
Prep Date:	4/4/2012		Analysis Date:	4/7/2012		SeqNo:	55022		Units: mg/Kg		
Analyte	Result	PQL	SPK value	SPK Ref Val	%REC	LowLimit	HighLimit	%RPD	RPDLimit	Qual	
Gasoline Range Organics (GRO)	28	5.0	24.75	0	113	85.4	147	4.55	19.2		
Surr: BFB	1,000		990.1		102	69.7	121	0	0		

Qualifiers:

*X Value exceeds Maximum Contaminant Level.
E Value above quantitation range
J Analyte detected below quantitation limits
R RPD outside accepted recovery limits

B Analyte detected in the associated Method Blank
H Holding times for preparation or analysis exceeded
ND Not Detected at the Reporting Limit
RL Reporting Detection Limit

QC SUMMARY REPORT

Hall Environmental Analysis Laboratory, Inc.

WO#: 1204096

12-Apr-12

Client: Animas Environmental Services

Project: Enterprise Federal 2E #1

Sample ID	MB-1381		SampType:	MBLK		TestCode:	EPA Method 8021B: Volatiles			
Client ID:	PBS		Batch ID:	1381		RunNo:	1937			
Prep Date:	4/4/2012		Analysis Date:	4/5/2012		SeqNo:	54588		Units: mg/Kg	
Analyte	Result	PQL	SPK value	SPK Ref Val	%REC	LowLimit	HighLimit	%RPD	RPDLimit	Qual
Benzene	ND	0.050								
Toluene	ND	0.050								
Ethylbenzene	ND	0.050								
Xylenes, Total	ND	0.10								
Surr: 4-Bromofluorobenzene	0.89		1.000		89.3	80	120			

Sample ID	LCS-1381		SampType:	LCS		TestCode:	EPA Method 8021B: Volatiles			
Client ID:	LCSS		Batch ID:	1381		RunNo:	1937			
Prep Date:	4/4/2012		Analysis Date:	4/5/2012		SeqNo:	54591		Units: mg/Kg	
Analyte	Result	PQL	SPK value	SPK Ref Val	%REC	LowLimit	HighLimit	%RPD	RPDLimit	Qual
Benzene	0.94	0.050	1.000	0	93.7	83.3	107			
Toluene	0.96	0.050	1.000	0	96.4	74.3	115			
Ethylbenzene	0.96	0.050	1.000	0	95.6	80.9	122			
Xylenes, Total	2.9	0.10	3.000	0	96.7	85.2	123			
Surr: 4-Bromofluorobenzene	0.94		1.000		93.8	80	120			

Sample ID	1204096-001AMS		SampType:	MS		TestCode:	EPA Method 8021B: Volatiles			
Client ID:	SB-4 47'		Batch ID:	1381		RunNo:	1974			
Prep Date:	4/4/2012		Analysis Date:	4/7/2012		SeqNo:	55048		Units: mg/Kg	
Analyte	Result	PQL	SPK value	SPK Ref Val	%REC	LowLimit	HighLimit	%RPD	RPDLimit	Qual
Benzene	0.92	0.048	0.9634	0	95.0	67.2	113			
Toluene	0.95	0.048	0.9634	0	99.1	62.1	116			
Ethylbenzene	0.95	0.048	0.9634	0	98.9	67.9	127			
Xylenes, Total	2.9	0.096	2.890	0	100	60.6	134			
Surr: 4-Bromofluorobenzene	0.90		0.9634		93.0	80	120			

Sample ID	1204096-001AMSD		SampType:	MSD		TestCode:	EPA Method 8021B: Volatiles			
Client ID:	SB-4 47'		Batch ID:	1381		RunNo:	1974			
Prep Date:	4/4/2012		Analysis Date:	4/7/2012		SeqNo:	55049		Units: mg/Kg	
Analyte	Result	PQL	SPK value	SPK Ref Val	%REC	LowLimit	HighLimit	%RPD	RPDLimit	Qual
Benzene	0.90	0.048	0.9551	0	94.7	67.2	113	1.17	14.3	
Toluene	0.94	0.048	0.9551	0	98.5	62.1	116	1.48	15.9	
Ethylbenzene	0.95	0.048	0.9551	0	99.5	67.9	127	0.241	14.4	
Xylenes, Total	2.8	0.096	2.865	0	99.1	60.6	134	1.87	12.6	
Surr: 4-Bromofluorobenzene	0.89		0.9551		93.0	80	120	0	0	

Qualifiers:

*X Value exceeds Maximum Contaminant Level.
E Value above quantitation range
J Analyte detected below quantitation limits
R RPD outside accepted recovery limits

B Analyte detected in the associated Method Blank
H Holding times for preparation or analysis exceeded
ND Not Detected at the Reporting Limit
RL Reporting Detection Limit

QC SUMMARY REPORT

Hall Environmental Analysis Laboratory, Inc.

WO#: 1204096

12-Apr-12

Client: Animas Environmental Services

Project: Enterprise Federal 2E #1

Sample ID	5ML RB	SampType:	MBLK	TestCode:	EPA Method 8021B: Volatiles					
Client ID:	PBW	Batch ID:	R2016	RunNo:	2016					
Prep Date:		Analysis Date:	4/9/2012	SeqNo:	56191	Units:	µg/L			
Analyte	Result	PQL	SPK value	SPK Ref Val	%REC	LowLimit	HighLimit	%RPD	RPDLimit	Qual
Benzene	ND	1.0								
Toluene	ND	1.0								
Ethylbenzene	ND	1.0								
Xylenes, Total	ND	2.0								
Surr: 4-Bromofluorobenzene	14		20.00		69.7	55	140			

Sample ID	100NG BTEX LCS	SampType:	LCS	TestCode:	EPA Method 8021B: Volatiles					
Client ID:	LCSW	Batch ID:	R2016	RunNo:	2016					
Prep Date:		Analysis Date:	4/9/2012	SeqNo:	56192	Units:	µg/L			
Analyte	Result	PQL	SPK value	SPK Ref Val	%REC	LowLimit	HighLimit	%RPD	RPDLimit	Qual
Benzene	21	1.0	20.00	0	104	80	120			
Toluene	21	1.0	20.00	0	107	80	120			
Ethylbenzene	21	1.0	20.00	0	104	80	120			
Xylenes, Total	61	2.0	60.00	0	102	80	120			
Surr: 4-Bromofluorobenzene	21		20.00		105	55	140			

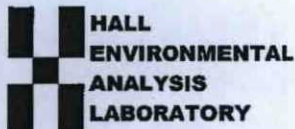
Sample ID	1204096-005AMS	SampType:	MS	TestCode:	EPA Method 8021B: Volatiles					
Client ID:	SB-2w	Batch ID:	R2016	RunNo:	2016					
Prep Date:		Analysis Date:	4/9/2012	SeqNo:	56256	Units:	µg/L			
Analyte	Result	PQL	SPK value	SPK Ref Val	%REC	LowLimit	HighLimit	%RPD	RPDLimit	Qual
Benzene	2,500	50	1,000	1,530	94.1	70.1	118			
Toluene	4,400	50	1,000	3,480	91.2	72.3	117			
Ethylbenzene	1,300	50	1,000	261.9	105	73.5	117			
Xylenes, Total	5,000	100	3,000	1,863	104	73.1	119			
Surr: 4-Bromofluorobenzene	890		1,000		88.9	55	140			

Sample ID	1204096-005AMSD	SampType:	MSD	TestCode:	EPA Method 8021B: Volatiles					
Client ID:	SB-2w	Batch ID:	R2016	RunNo:	2016					
Prep Date:		Analysis Date:	4/9/2012	SeqNo:	56257	Units:	µg/L			
Analyte	Result	PQL	SPK value	SPK Ref Val	%REC	LowLimit	HighLimit	%RPD	RPDLimit	Qual
Benzene	2,400	50	1,000	1,530	86.2	70.1	118	3.25	16.4	
Toluene	4,200	50	1,000	3,480	74.8	72.3	117	3.80	13.9	
Ethylbenzene	1,300	50	1,000	261.9	99.0	73.5	117	4.65	13.5	
Xylenes, Total	4,800	100	3,000	1,863	98.0	73.1	119	3.96	12.9	
Surr: 4-Bromofluorobenzene	1,100		1,000		105	55	140	0	0	

Qualifiers:

*X Value exceeds Maximum Contaminant Level.
E Value above quantitation range
J Analyte detected below quantitation limits
R RPD outside accepted recovery limits

B Analyte detected in the associated Method Blank
H Holding times for preparation or analysis exceeded
ND Not Detected at the Reporting Limit
RL Reporting Detection Limit



Hall Environmental Analysis Laboratory
4901 Hawkins NE
Albuquerque, NM 87105
TEL: 505-345-3975 FAX: 505-345-4107
Website: www.hallenvironmental.com

Sample Log-In Check List

Client Name: Animas Environmental Work Order Number: 1204096

Received by/date: LM 04/03/12

Logged By: Anne Thorne 4/3/2012 10:30:00 AM

Completed By: Anne Thorne 4/3/2012

Reviewed By: [Signature] 04/03/12

Chain of Custody

1. Were seals intact? Yes ☐ No ☐ Not Present ☒
2. Is Chain of Custody complete? Yes ☒ No ☐ Not Present ☐
3. How was the sample delivered? Courier

Log In

4. Coolers are present? (see 19. for cooler specific information) Yes ☒ No ☐ NA ☐
5. Was an attempt made to cool the samples? Yes ☒ No ☐ NA ☐
6. Were all samples received at a temperature of $>0^{\circ}\text{C}$ to 6.0°C ? Yes ☒ No ☐ NA ☐
7. Sample(s) in proper container(s)? Yes ☒ No ☐
8. Sufficient sample volume for indicated test(s)? Yes ☒ No ☐
9. Are samples (except VOA and ONG) properly preserved? Yes ☒ No ☐
10. Was preservative added to bottles? Yes ☐ No ☒ NA ☐
11. VOA vials have zero headspace? Yes ☐ No ☐ No VOA Vials ☒
12. Were any sample containers received broken? Yes ☐ No ☒
13. Does paperwork match bottle labels?
(Note discrepancies on chain of custody) Yes ☒ No ☐
14. Are matrices correctly identified on Chain of Custody? Yes ☒ No ☐
15. Is it clear what analyses were requested? Yes ☒ No ☐
16. Were all holding times able to be met?
(If no, notify customer for authorization.) Yes ☒ No ☐

of preserved
bottles checked
for pH: _____
(<2 or >12 unless noted)
Adjusted? _____
Checked by: _____

Special Handling (if applicable)

17. Was client notified of all discrepancies with this order? Yes ☐ No ☐ NA ☒

Person Notified:	_____	Date:	_____
By Whom:	_____	Via:	<input type="checkbox"/> eMail <input type="checkbox"/> Phone <input type="checkbox"/> Fax <input type="checkbox"/> In Person
Regarding:	_____		
Client Instructions:	_____		

18. Additional remarks:

19. Cooler Information

Cooler No	Temp $^{\circ}\text{C}$	Condition	Seal Intact	Seal No	Seal Date	Signed By
1	2.3	Good	Yes			

Chain-of-Custody Record		Form C-100 (Rev. 10/01)	
Client:	Animas Environmental Services	<input checked="" type="checkbox"/> Standard	<input type="checkbox"/> Rush
Mailing Address:	624 E Comanche Farmington NM	Project Name: Enterprise Federal 2E #1	
	Farmington, NM 87401	Project #:	
Phone #:	505-564-2281	Project Manager: Ross Kennemer	
email or Fax#:	505-324-2022		
QA/QC Package:			
<input checked="" type="checkbox"/> Standard	<input type="checkbox"/> Level 4 (Full Validation)		
Accreditation:		Sampler: Thomas Long	
<input type="checkbox"/> NELAP	<input type="checkbox"/> Other _____	<input checked="" type="checkbox"/> On Ice <input checked="" type="checkbox"/> Yes <input type="checkbox"/> No	
<input type="checkbox"/> EDD (Type) _____		Sample Temperature: 21.3	



HALL ENVIRONMENT ANALYSIS LABORATORY

www.hallenvironmental.com

4901 Hawkins NE - Albuquerque, NM 87109

Tel. 505-345-3975 Fax 505-345-4107

Analysis Request

[illegible]

Date: 4-2-12	Time: 1621	Relinquished by: <i>Thony Jay</i>	Received by: <i>Christine Woeber</i>	Date 4/2/12	Time 1621
Date: 4/2/12	Time: 1647	Relinquished by: <i>Christine Woeber</i>	Received by: <i>Christine Woeber</i>	Date 04/03/12	Time 1033

Remarks: Bill to Enterprise

If necessary, samples submitted to Hall Environmental may be subcontracted to other accredited laboratories. This serves as notice of this possibility. Any sub-contracted data will be clearly notated on the analytical report.