

ABOVE THIS LINE FOR DIVISION USE ONLY

**NEW MEXICO OIL CONSERVATION DIVISION**  
- Engineering Bureau -  
1220 South St. Francis Drive, Santa Fe, NM 87505



**ADMINISTRATIVE APPLICATION CHECKLIST**

THIS CHECKLIST IS MANDATORY FOR ALL ADMINISTRATIVE APPLICATIONS FOR EXCEPTIONS TO DIVISION RULES AND REGULATIONS WHICH REQUIRE PROCESSING AT THE DIVISION LEVEL IN SANTA FE

**Application Acronyms:**

**[NSL-Non-Standard Location] [NSP-Non-Standard Proration Unit] [SD-Simultaneous Dedication]**  
**[DHC-Downhole Commingling] [CTB-Lease Commingling] [PLC-Pool/Lease Commingling]**  
**[PC-Pool Commingling] [OLS - Off-Lease Storage] [OLM-Off-Lease Measurement]**  
**[WFX-Waterflood Expansion] [PMX-Pressure Maintenance Expansion]**  
**[SWD-Salt Water Disposal] [IPI-Injection Pressure Increase]**  
**[EOR-Qualified Enhanced Oil Recovery Certification] [PPR-Positive Production Response]**

**[1] TYPE OF APPLICATION - Check Those Which Apply for [A]**

[A] Location - Spacing Unit - Simultaneous Dedication  
☐ NSL ☐ NSP ☐ SD

Check One Only for [B] or [C]

[B] Commingling - Storage - Measurement  
☐ DHC ☒ CTB ☐ PLC ☐ PC ☐ OLS ☐ OLM

[C] Injection - Disposal - Pressure Increase - Enhanced Oil Recovery  
☐ WFX ☐ PMX ☐ SWD ☐ IPI ☐ EOR ☐ PPR

[D] Other: Specify \_\_\_\_\_

- CTB 773  
- Devon Energy Production  
Company, LP  
6137  
Well  
- Adabona 26  
Fe 24 8H  
30-015-38624  
- Adabona "27" Red  
Fe 24  
30-015-38625

**[2] NOTIFICATION REQUIRED TO: - Check Those Which Apply, or ☐ Does Not Apply**

[A] ☒ Working, Royalty or Overriding Royalty Interest Owners

[B] ☐ Offset Operators, Leaseholders or Surface Owner

[C] ☐ Application is One Which Requires Published Legal Notice

[D] ☒ Notification and/or Concurrent Approval by BLM or SLO  
U.S. Bureau of Land Management - Commissioner of Public Lands, State Land Office

[E] ☐ For all of the above, Proof of Notification or Publication is Attached, and/or,

[F] ☐ Waivers are attached

Pool  
- Inglewells  
Bonesspring  
33740

**[3] SUBMIT ACCURATE AND COMPLETE INFORMATION REQUIRED TO PROCESS THE TYPE OF APPLICATION INDICATED ABOVE.**

**[4] CERTIFICATION:** I hereby certify that the information submitted with this application for administrative approval is **accurate** and **complete** to the best of my knowledge. I also understand that **no action** will be taken on this application until the required information and notifications are submitted to the Division.

Note: Statement must be completed by an individual with managerial and/or supervisory capacity.

Erin Workman  
Print or Type Name

*Erin Workman*  
Signature

Regulatory Compliance Professional  
Title

08.17.15  
Date

Erin.Workman@dm.com  
E-mail Address

District I  
1625 N. French Drive, Hobbs, NM 88240  
District II  
1301 W. Grand Ave, Artesia, NM 88210  
District III  
1000 Rio Brazos Road, Aztec, NM 87410  
District IV  
1220 S. St Francis Dr, Santa Fe, NM  
87505

State of New Mexico  
Energy, Minerals and Natural Resources Department

Form C-107-B  
Revised June 10, 2003

### OIL CONSERVATION DIVISION

1220 S. St Francis Drive  
Santa Fe, New Mexico 87505

Submit the original  
application to the Santa Fe  
office with one copy to the  
appropriate District Office.

#### APPLICATION FOR SURFACE COMMINGLING (DIVERSE OWNERSHIP)

OPERATOR NAME: Devon Energy Production Co., LP

OPERATOR ADDRESS: 333 W Sheridan Avenue, Oklahoma City, OK 73102

APPLICATION TYPE:

☒ Pool Commingling ☒ Lease Commingling ☐ Pool and Lease Commingling ☐ Off-Lease Storage and Measurement (Only if not Surface Commingled)

LEASE TYPE: ☐ Fee ☐ State ☒ Federal

Is this an Amendment to existing Order? ☐ Yes ☒ No If "Yes", please include the appropriate Order No. \_\_\_\_\_

Have the Bureau of Land Management (BLM) and State Land office (SLO) been notified in writing of the proposed commingling  
☒ Yes ☐ No

#### (A) POOL COMMINGLING Please attach sheets with the following information

(1) Pool Names and Codes	Gravities / BTU of Non-Commingled Production	Calculated Gravities / BTU of Commingled Production		Calculated Value of Commingled Production	Volumes

(2) Are any wells producing at top allowables? ☐ Yes ☐ No

(3) Has all interest owners been notified by certified mail of the proposed commingling? ☐ Yes ☐ No.

(4) Measurement type: ☐ Metering ☐ Other (Coriolis Test Method)

(5) Will commingling decrease the value of production? ☐ Yes ☐ No If "yes", describe why commingling should be approved

#### (B) LEASE COMMINGLING Please attach sheets with the following information

(1) Pool Name and Code.

(2) Is all production from same source of supply? ☒ Yes ☐ No

(3) Has all interest owners been notified by certified mail of the proposed commingling? ☒ Yes ☐ No

(4) Measurement type: ☒ Metering ☒ Other (Coriolis Test)

#### (C) POOL and LEASE COMMINGLING Please attach sheets with the following information

(1) Complete Sections A and E.

#### (D) OFF-LEASE STORAGE and MEASUREMENT Please attached sheets with the following information

(1) Is all production from same source of supply? ☐ Yes ☐ No

(2) Include proof of notice to all interest owners.

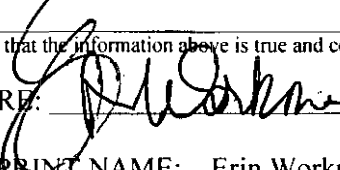
#### (E) ADDITIONAL INFORMATION (for all application types) Please attach sheets with the following information

(1) A schematic diagram of facility, including legal location.

(2) A plat with lease boundaries showing all well and facility locations. Include lease numbers if Federal or State lands are involved.

(3) Lease Names, Lease and Well Numbers, and API Numbers.

I hereby certify that the information above is true and complete to the best of my knowledge and belief.

SIGNATURE:  TITLE: Regulatory Compliance Prof. DATE: 08.17.15

TYPE OR PRINT NAME: Erin Workman TELEPHONE NUMBER: 405-552-7970

E-MAIL ADDRESS: Erin.workman@dvn.com

# APPLICATION FOR CENTRAL TANK BATTERY

## Proposal for Mean Green Wells:

Devon Energy Production Company, LP is requesting approval for the Central Tank Battery for the following wells:

### Federal Lease NMNM0405444A (12.5% Royalty Rate)

Well Name	Location	API #	Pool 33740	BOPD	OG	MCFPD	BTU
Aldabra 26 Fed 8H	SESE, Sec 26, T23S, R31E	30-015-38624	Ingle wells: Bone Spring	124	*	357	1352.6

### Federal Lease: NMNM0418220A (12.5% Royalty Rate)

Well Name	Location	API #	Pool 33740	BOPD	OG	MCFPD	BTU
Aldabra 27 Fed 1H	SWSW, Sec. 27, T23S, R31E	30-015-38625	Ingle Wells: Bone Spring	109	*	391	1344.0

\*Available upon receipt of test

Attached is a map which displays the federal leases and well locations in Section 22, T26S, R34E.

The BLM's interest in these wells are identical.

## Oil & Gas metering:

The central tank battery is located on the Aldabra 26-27 Central Tank Battery. The production from each well will flow through its own three phase separator with a Micro Motion Coriolis Meter to meter the oil, flow meter to meter the water, and gas allocation meter to meter the gas. VRU will be allocated back to each well utilizing a percentage of each wells monthly oil production.

The Aldabra 26-27 Central Tank Battery will have four oil tanks that these two wells will utilize and they have a common DCP CDP #72888900 which is on location on the west side of the battery. Oil, gas, and water volumes from each well producing to this battery will be determined by using individual metered separators. Oil will be sold through a common Smith Lact Meter SN1335E101622.

The Aldabra 26 Fed 8H flows to a three phase separator, where after separation gas is routed to the gas allocation meter #390-49-249, then combines with the Aldabra 27 Fed 1H and flows to the DCP CDP #72888900. The produced water and oil are separated, the oil is then metered with a Micro Motion Coriolis meter SN14398967, then flows into the heater/treater, combines with the production from the Aldabra 27 Fed 1H, and into one of the 500 bbl. oil tanks. The water is metered using a mag meter, then flows to the FWKO, and to one of the 500 bbl. water tanks, along with the water from the other well.

The Aldabra 27 Fed 1H flows to a three phase separator, where after separation gas is routed to the gas allocation meter #390-49-264, then combines with the Aldabra 26 Fed 8H and flows to the DCP CDP #72888900. The produced water and oil are separated, the oil is then metered with a Micro Motion Coriolis meter SN14398971, then flows into the heater/treater, combines with the production from the Aldabra 26 Fed 8H, and into one of the 500 bbl. oil tanks. The water is metered using a mag meter, then flows to the FWKO, and to one of the 500 bbl. water tanks, along with the water from the other well.

Oil production will be allocated on a daily basis based on the Coriolis Micro Motion Meter located downstream of the metered separator. The Coriolis meters will be proven, as per API, NMOCD, and BLM specifications, when installed, once per month for the first 3 months (to establish a consistent repeatability factor), and then quarterly thereafter, the factor obtained will be used to allocate the production volumes. Gas production will be allocated on a daily basis utilizing the gas allocation meter for each well. The gas production from the gas allocation meters will commingle and flow into the DCP CDP #72888900. These meters will be calibrated on a regular basis per API, NMOCD and BLM specifications. The BLM and OCD will be notified of any future changes in the facilities.

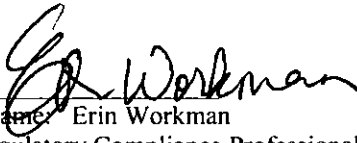
## Process and Flow Descriptions:

The flow of produced fluids is shown in detail on the enclosed Mean Green 23 Fed 1H Process Flow Diagram along with a description of each vessel and map which shows the lease boundaries, location of the wells, facility, and gas sales meter. The commingling of this production is the most effective, economic means of producing the reserves and will not result in reduced royalty or improper measurement of production. The proposed commingling will reduce operating expenses as well as reduce the surface facility footprint and overall emissions.

Devon Energy Production Company, LP understands the requested approval will not constitute the granting of any right-of-way or construction rights not granted by the lease instrument. ROW has or will be submitted.

Working, royalty, and overriding interest owners are not identical and have been notified of this proposal via certified mail (see attached).

Signed:

A handwritten signature in black ink, appearing to read "Erin Workman". The signature is written in a cursive, flowing style.

Printed Name: Erin Workman

Title: Regulatory Compliance Professional

Date: 08.17.15



Devon Energy Corporation  
333 West Sheridan Avenue  
Oklahoma City, OK 73102-5010

405 552-7970 Phone  
Erin.workman@devon.com

August 17, 2015

RECEIVED OCD

2015 AUG 18 P 3:07

Mr. Richard Ezeanyim  
State of New Mexico  
Oil Conservation Division  
1220 S. St. Francis Drive  
Santa Fe, New Mexico 87505

Re: Central Tank Battery  
Aldabra 26 Fed 8H & Aldabra 27 Fed 1H  
API: 30-015-38624 & 30-015-38625  
Pool: Ingle Wells; Bone Spring  
Lease: NMNM0405444A & NMNM0418220A  
County: Eddy Co., NM

Dear Mr. Ezeanyim:

Please find attached the OCD Form C-107B application for a Central Tank Battery for the aforementioned wells.

A copy of this application has been submitted to the Bureau of Land Management, we will submit their approval upon receipt.

The working interest, royalty interest and overriding royalty interest owners are not identical; notification has been sent via certified mail (see attached).

Should you have any questions or need further assistance, please do not hesitate to contact me at (405) 552-7970.

Sincerely,

  
Erin Workman  
Regulatory Compliance Professional

Enclosures

District I  
1625 N. French Dr., Hobbs, NM 88240  
Phone: (575) 393-6161 Fax: (575) 393-0720  
District II  
511 S. First St., Artesia, NM 88210  
Phone: (575) 748-1283 Fax: (575) 748-9720  
District III  
1000 Rio Brazos Road, Aztec, NM 87410  
Phone: (505) 334-6173 Fax: (505) 334-6170  
District IV  
1220 S. St. Francis Dr., Santa Fe, NM 87505  
Phone: (505) 476-3460 Fax: (505) 476-3462

State of New Mexico  
Energy, Minerals & Natural Resources Department  
OIL CONSERVATION DIVISION  
1220 South St. Francis Dr.  
Santa Fe, NM 87505

Form C-102  
Revised August 1, 2011  
Submit one copy to appropriate  
District Office

☐ AMENDED REPORT

WELL LOCATION AND ACREAGE DEDICATION PLAT

<sup>1</sup> API Number <b>30-015-38624</b>	<sup>2</sup> Pool Code <b>33740</b>	<sup>3</sup> Pool Name <b>INGLE WELLS; BONE SPRING</b>
<sup>4</sup> Property Code <b>38559</b>	<sup>5</sup> Property Name <b>ALDABRA 26 FED</b>	
<sup>7</sup> OGRID No. <b>6137</b>	<sup>8</sup> Operator Name <b>DEVON ENERGY PRODUCTION COMPANY, L.P.</b>	<sup>6</sup> Well Number <b>8H</b>
		<sup>9</sup> Elevation <b>3470.6</b>

<sup>10</sup> Surface Location

UL or lot no.	Section	Township	Range	Lot Idn	Feet from the	North/South line	Feet from the	East/West line	County
<b>P</b>	<b>26</b>	<b>23 S</b>	<b>31 E</b>		<b>350</b>	<b>SOUTH</b>	<b>445</b>	<b>EAST</b>	<b>EDDY</b>

<sup>11</sup> Bottom Hole Location If Different From Surface

UL or lot no.	Section	Township	Range	Lot Idn	Feet from the	North/South line	Feet from the	East/West line	County
<b>A</b>	<b>26</b>	<b>23 S</b>	<b>31 E</b>		<b>332</b>	<b>NORTH</b>	<b>654'</b>	<b>EAST</b>	<b>EDDY</b>

<sup>12</sup> Dedicated Acres	<sup>13</sup> Joint or Infill	<sup>14</sup> Consolidation Code	<sup>15</sup> Order No.

No allowable will be assigned to this completion until all interests have been consolidated or a non-standard unit has been approved by the division.

<p>N89°46'53"E 2639.39 FT</p> <p>NW CORNER SEC. 26 LAT. = 32.2827139°N LONG. = 103.7571232°W</p> <p>NMSP EAST (FT) N = 467062.36 E = 719406.80</p>		<p>N89°46'44"E 2639.09 FT</p> <p>N/4 CORNER SEC. 26 LAT. = 32.2827023°N LONG. = 103.7485828°W</p> <p>NMSP EAST (FT) N = 467072.42 E = 722046.18</p>		<p>BOTTOM OF HOLE 332 654'</p> <p>BOTTOM OF HOLE LAT. = 32.2817864°N LONG. = 103.7421790°W</p> <p>NMSP EAST (FT) N = 466750.06 E = 724027.03</p>		<p>NE CORNER SEC. 26 LAT. = 32.2826905°N LONG. = 103.7400433°W</p> <p>NMSP EAST (FT) N = 467082.60 E = 724685.25</p>	
<p>W/4 CORNER SEC. 26 LAT. = 32.2754504°N LONG. = 103.7571220°W</p> <p>NMSP EAST (FT) N = 464419.95 E = 719421.39</p>		<p>NOTE: LATITUDE AND LONGITUDE COORDINATES ARE SHOWN USING THE NORTH AMERICAN DATUM OF 1983 (NAD83). LISTED NEW MEXICO STATE PLANE EAST COORDINATES ARE GRID (NAD83). BASIS OF BEARING AND DISTANCES USED ARE NEW MEXICO STATE PLANE EAST COORDINATES MODIFIED TO THE SURFACE.</p>		<p>E/4 CORNER SEC. 26 LAT. = 32.2754314°N LONG. = 103.7400445°W</p> <p>NMSP EAST (FT) N = 464441.80 E = 724699.48</p>			
<p>SW CORNER SEC. 26 LAT. = 32.2681897°N LONG. = 103.7571227°W</p> <p>NMSP EAST (FT) N = 461778.57 E = 719435.33</p>		<p>ALDABRA "26" FED. COM #8H ELEV. = 3470.6' LAT. = 32.2691365°N (NAD83) LONG. = 103.7414881°W</p> <p>NMSP EAST (FT) N = 462149.33 E = 724265.93</p>		<p>SE CORNER SEC. 26 LAT. = 32.2681723°N LONG. = 103.7400492°W</p> <p>NMSP EAST (FT) N = 461301.01 E = 724712.61</p>			
<p>S89°44'28"W 2638.20 FT</p>		<p>S/4 CORNER SEC. 26 LAT. = 32.2681832°N LONG. = 103.7485875°W</p> <p>NMSP EAST (FT) N = 461790.49 E = 722073.50</p>		<p>SURFACE LOCATION 445' 350'</p>		<p>S89°46'17"W 2639.13 FT</p>	

**<sup>17</sup> OPERATOR CERTIFICATION**

I hereby certify that the information contained herein is true and complete to the best of my knowledge and belief, and that this organization either owns a working interest or undivided mineral interest in the land including the proposed bottom hole location or has a right to drill this well at this location pursuant to a contract with an owner of such a mineral or working interest, or to a voluntary pooling agreement or a compulsory pooling order heretofore entered by the division.

*Erin Workman* 08.13.15  
Signature Date  
Erin Workman, Regulatory Analyst  
Printed Name  
Erin.workman@dmn.com  
E-mail Address

**<sup>18</sup> SURVEYOR CERTIFICATION**

I hereby certify that the well location shown on this plat was plotted from field notes of actual surveys made by me or under my supervision, and that the same is true and correct to the best of my belief.

OCTOBER 9 2013  
Date of Survey  
*HERNANDEZ*  
Signature and Seal of Professional Surveyor  
Certificate Number: HERNANDEZ, JARAMILLO, PLS 12797  
SURVEY NO. 216B

District I  
1625 N. French Dr., Hobbs, NM 88240  
Phone: (575) 393-6161 Fax: (575) 393-0720  
District II  
811 S. First St., Artesia, NM 88210  
Phone: (575) 748-1283 Fax: (575) 748-9720  
District III  
1000 Rio Brazos Road, Aztec, NM 87410  
Phone: (505) 334-6178 Fax: (505) 334-6170  
District IV  
1220 S. St. Francis Dr., Santa Fe, NM 87505  
Phone: (505) 476-3460 Fax: (505) 476-3462

State of New Mexico  
Energy, Minerals & Natural Resources Department  
OIL CONSERVATION DIVISION  
1220 South St. Francis Dr.  
Santa Fe, NM 87505

Form C-102  
Revised August 1, 2011  
Submit one copy to appropriate  
District Office  
☐ AMENDED REPORT

WELL LOCATION AND ACREAGE DEDICATION PLAT

<sup>1</sup> API Number 30-015-38625		<sup>2</sup> Pool Code 33740		<sup>3</sup> Pool Name INGLE WELLS; BONE SPRING					
<sup>4</sup> Property Code 38560		<sup>5</sup> Property Name ALDABRA "27" FED						<sup>6</sup> Well Number 1H	
<sup>7</sup> OGRID No. 6137		<sup>8</sup> Operator Name DEVON ENERGY PRODUCTION COMPANY, L.P.						<sup>9</sup> Elevation 3404.1	
<sup>10</sup> Surface Location									
U/L or lot no. M	Section 27	Township 23S	Range 31 E	Lot Idn	Feet from the 200	North/South line SOUTH	Feet from the 275	East/West line WEST	County EDDY
<sup>11</sup> Bottom Hole Location If Different From Surface									
U/L or lot no. D	Section 27	Township 23S	Range 31 E	Lot Idn	Feet from the 357	North/South line NORTH	Feet from the 591	East/West line WEST	County EDDY
<sup>12</sup> Dedicated Acres 160		<sup>13</sup> Joint or Infill		<sup>14</sup> Consolidation Code		<sup>15</sup> Order No.			

No allowable will be assigned to this completion until all interests have been consolidated or a non-standard unit has been approved by the division.

		<p><sup>17</sup> OPERATOR CERTIFICATION</p> <p>I hereby certify that the information contained herein is true and complete to the best of my knowledge and belief, and that this organization either owns a working interest or unleased mineral interest in the land including the proposed bottom hole location or has a right to drill this well at this location pursuant to a contract with an owner of such a mineral or working interest, or to a voluntary pooling agreement or a compulsory pooling order heretofore entered by the division.</p> <p><i>Erin Workman</i> 08.14.15 Signature Date</p> <p>Erin Workman, Regulatory Analyst</p> <p>Printed Name</p> <p>Erin.Workman@dmv.com</p> <p>E-mail Address</p>
<p>NOTE: LATITUDE AND LONGITUDE COORDINATES ARE SHOWN USING THE NORTH AMERICAN DATUM OF 1983 (NAD83). LISTED NEW MEXICO STATE PLANE EAST COORDINATES ARE GRID (NAD83). BASIS OF BEARING AND DISTANCES USED ARE NEW MEXICO STATE PLANE EAST COORDINATES MODIFIED TO THE SURFACE.</p>		<p><sup>18</sup> SURVEYOR CERTIFICATION</p> <p>I hereby certify that the well location shown on this plat was plotted from field notes of actual surveys made by me or under my supervision, and that the same is true and correct to the best of my belief.</p> <p>OCTOBER 16, 2013 Date of Survey</p> <p><i>Filimon F. Jaramillo</i> Signature and Seal of Professional Surveyor</p> <p>Certificate Number: FILIMON F. JARAMILLO, PLS 12797</p> <p>SURVEY NO. 201B</p>

PP: 106' FSL & 287' FWL, Sec 27-T23S-R31E

Project Area: ■  
Producing Area: ■



Devon Energy Production Company  
333 W. Sheridan Avenue  
Oklahoma City, Oklahoma 73102  
Phone: (405)-552-7970  
[Erin.Workman@dvn.com](mailto:Erin.Workman@dvn.com)

August 17, 2015

**CERTIFIED MAIL**  
**RETURN RECEIPT REQUESTED**

Interest Owners

Re: Central Tank Battery  
Aldabra 26 Fed 8H & Aldabra 27 Fed 1H  
API: 30-015-38624 & 30-015-38625  
Pool: Ingle Wells; Bone Spring  
Lease: NMNM0405444A & NMNM0418220A  
County: Eddy Co., NM

To whom it may concern:

This is to advise you that Devon Energy Production Company, LP, is filing an application with the New Mexico Oil Conservation Division ("NMOCD") seeking approval for a Central Tank Battery for the above mentioned wells.

A copy of our application submitted to the Division & the BLM is attached.

Any objections or requests that a hearing should be held regarding this application must be submitted to the New Mexico Oil Conservation Division Santa Fe office within 20 days from the date of this letter.

Please contact the undersigned at (405) 552-7970 should you have any questions or need anything further.

Sincerely,

Devon Energy Production Company, L.P.

A handwritten signature in black ink that reads "Erin Workman". The signature is fluid and cursive, with the first name "Erin" being more prominent than the last name "Workman".

Erin Workman  
Regulatory Compliance Professional

Enclosure



**COMMINGLE MAILING REFERENCE: ALDABRA 26-27**

RESPONDENT NAME	ADDRESS 1	ADDRESS 2	ADDRESS 3	CITY	STATE	ZIP CODE	E-CERTIFIED MAILING NUMBER
RICHARD C GIBSON			PO BOX 3817	MIDLAND	TX	79702	9214890152718100006718
THOMAS R SMITH			5705 PINEHURST	FARMINGTON	NM	87402	9214890152718100006725
							9214890152718100006732
L E OPPERMANN			500 W TEXAS AVE STE 830	MIDLAND	TX	79701	
JOE N GIFFORD			PO BOX 51187	MIDLAND	TX	79710-1187	9214890152718100006749
DOUGLAS ABELL DENTON			1501 PRINCETON AVE	MIDLAND	TX	79701-5761	9214890152718100006756
OBIE & COMPANY	% JP MORGAN CHASE BANK NA		PO BOX 99084	FORT WORTH	TX	76199-0084	9214890152718100006763
							9214890152718100006770
HOUSTON & EMMA HILL TRUST EST	JAMES ROBERT HILL, VIRGINIA GLENN	HILL LATTIMORE & JOHN A STYRSKY TRUSTEES	P O BOX 731986	DALLAS	TX	75373-1986	
							9214890152718100006787
TEK PROPERTIES LTD	% THOMAS E KELLY		4705 MIRAMONT CIRCLE	BRYAN	TX	77802	
OXY USA INC			PO BOX 841803	DALLAS	TX	75284-1803	9214890152718100006794
							9214890152718100006800
OTTO E SCHROEDER JR			915 N FIELDER RD APT 1101	ARLINGTON	TX	76012	
							9214890152718100006817
CATHERINE M GRACE	%DAN SERNA & COMPANY		6031 INTERSTATE 20 W STE 251LB	ARLINGTON	TX	76017	
SOUTHWEST PETROLEUM CORP			PO BOX 25623	OVERLAND PARK	KS	66225	9214890152718100006824
JAMES R HILL FAMILY LTD PTNRSP	A TEXAS LIMITED PARTNERSHIP		P O BOX 731986	DALLAS	TX	75373-1986	9214890152718100007203
GLENN LATTIMORE FAMILY LP	A TEXAS LIMITED PARTNERSHIP		P O BOX 731986	DALLAS	TX	75373-1986	9214890152718100006831
MARY MARGARET OLSON TRUST	LEONARD B OLSON, TRUSTEE	% SERNA & CO PC	6031 W I-20 STE 251	ARLINGTON	TX	76017	9214890152718100006848
BASCOM MITCHELL FAMILY PRTERSHP LP	% BASCOM L MITCHELL		1 LIVE OAK DR	MIDLAND	TX	79705	9214890152718100006855
L EDWARD INNERARITY JR (ORRI)			PO BOX 2113	MIDLAND	TX	79702	9214890152718100006862
RICHARD DONALD JONES JR			200 N GAINES RD	CEDAR CREEK	TX	78612	9214890152718100006879
			6203 ALDEN BRIDGE DR APT 7201	THE WOODLANDS	TX	77382-5135	9214890152718100006886
GEORGIA B BASS							
REGENT OIL & GAS COMPANY LP			PO BOX 25204	DALLAS	TX	75225	9214890152718100006893
JADT MINERALS LTD			PO BOX 190229	DALLAS	TX	75219-0229	9214890152718100006909
PATRICIA KAY LORENZ			401 RED OAK ST	ARANSAS PASS	TX	78336-4616	9214890152718100006916
DOROTHY J KEENOM INDIV			PO BOX 470605	FORT WORTH	TX	76147-0605	9214890152718100006923
JOHN E CASSIDY			PO BOX 177	DRIPPING SPRINGS	TX	78620	9214890152718100006930
MARY LOU CASSIDY			PO BOX 96	MIDLAND	TX	79702	9214890152718100006947
GEORGE KARABATSOS			1115 HIGHLAND ST	HOUSTON	TX	77009	9214890152718100006954
BALONEY FEATHERS LTD	BY ELK MOUNTAIN HOLDINGS LLC	GEN PTNR	PO BOX 1586	LUBBOCK	TX	79408	9214890152718100006961
FIGURE 4 INVESTMENT TRUST			11010 CRESTMORE ST	HOUSTON	TX	77096	9214890152718100006978
NANCY PUFF JONES TRUST	DOROTHY JEAN KEENOM TRUSTEE		PO BOX 470605	FORT WORTH	TX	76147-0605	9214890152718100006985
							9214890152718100006992
OSBORNE B COWLES TRUST	DTD 10/8/96	A JANET GHARRITY SUCCESSOR TTEE	700 BEACH DR APT 302	ST PETERSBURG	FL	33701-2646	
PATRICIA B YOUNG MGMT TR	1ST NTL BK & TR CO OF OKMULGEE	OKLAHOMA	PO BOX 1037	OKMULGEE	OK	74447	9214890152718100007005
							9214890152718100007012
JAY LEE TOUCHSTONE TRUST	CREATED UWO MERLE T FRANKLIN	DTD 6/24/2009 TRUMAN ESTES TOUCHSTONE & KYLE	10000 MEMORIAL DR STE 650	HOUSTON	TX	77024-3417	
							9214890152718100007029
TRUMAN ESTES TOUCHSTONE TRUST	CREATED UWO MERLE T FRANKLIN	DTD 6/24/2009 TRUMAN ESTES TOUCHSTONE & KYLE	10000 MEMORIAL DR STE 650	HOUSTON	TX	77024-3417	
LINDA KAY NEIGHBORS			1711 DOUGLAS AVE	MIDLAND	TX	79701	9214890152718100007036
ALFRED GILES IV			PO BOX 50360	AUSTIN	TX	78763-0360	9214890152718100007043
JOHN GEOFFREY GILES			2600 ESCONDIDO CV	AUSTIN	TX	78703-1610	9214890152718100007050
							9214890152718100007067
PETROHILL RESOURCES LLC	AGENT	FAO MLHRT & MSWRT & WMT MICHAEL S WALTRIP & MARGERY L	3343 LOCKE AVE STE 103	FORT WORTH	TX	76107-5702	
ONRR	ROYALTY MANAGEMENT PROGRAM		PO BOX 25627	DENVER	CO	80225-0627	9214890152718100007074
HILL INVESTMENTS LTD	CASODY ENTERPRISES LLC	GEN PTNR ALAN M HILL PRES	PO BOX 1568	CEDAR PARK	TX	78630-1568	9214890152718100007081
							9214890152718100007098
H-S MINERALS & REALTY LTD	RC STAR LLC GENERAL PARTNER	CYDNEY H SHEPARD & E ROBERT SHEPARD MANAGING MEMBERS	PO BOX 27284	AUSTIN	TX	78755-2284	
MICKEY GIBSON			PO BOX 590	CAVE CREEK	AZ	85327	9214890152718100007104
CHRISTENSEN RESOURCE PROPERTIES LP			PO BOX 3790	MIDLAND	TX	79702-3790	9214890152718100007111
CHRISTENSEN HOLDINGS LP			2303 W LOUISIANA AVE	MIDLAND	TX	79701	9214890152718100007128
PERRY RESOURCES LLC			5615 VULCAN VISTA NE	ALBUQUERQUE	NM	87111	9214890152718100007135
L EDWARD INNERARITY JR			PO BOX 2113	MIDLAND	TX	79702	9214890152718100007159

NORTEX CORPORATION	% THE NORTHERN TRUST COMPANY		PO BOX 27710	HOUSTON	TX	77227-7710	9214890152718100007166
PATRICIA BOYLE YOUNG			PO BOX 1639	SOLANA BEACH	CA	92075-7639	9214890152718100007173
LORRAINE L JOHNSON LVG TRUST	FARMERS NATIONAL CO AGENT	GEORGIA L TEMPLE CO TTEE	PO BOX 3480	OMAHA	NE	68103-0480	9214890152718100007180
CONCORD LAND & MINERALS	LONG TERM INVESTMENTS	TWENTY TWO LLC BENNY DUNCAN REG AGENT	PO BOX 671099	DALLAS	TX	75367	9214890152718100007197

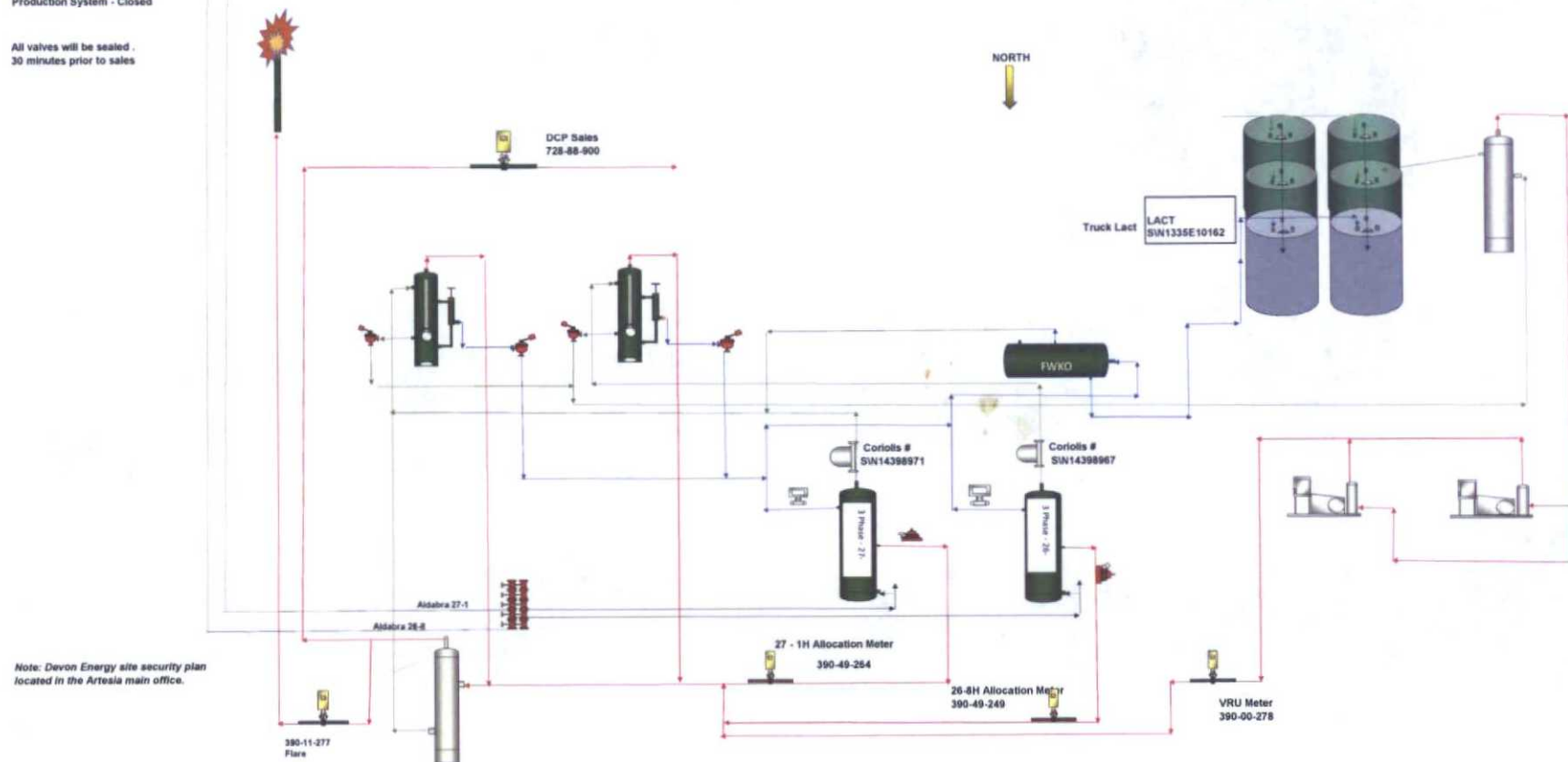


Aldabra 26-27 CTB  
SESE, Sec 27, T23S, R31E  
Eddy County, NM  
Lease NMNM0418220A

Production System - Closed

All valves will be sealed .  
30 minutes prior to sales

# PROCESS FLOW DIAGRAM



WC Name	Well API	Date	Year	Month	Oil Prod.	Gas Prod.
ALDABRA 26 FED 8H	300153862400	1/31/2015	2015	01	5,264.00	11,068
ALDABRA 27 FED 1H	300153862500	1/31/2015	2015	01	3,995.00	15,814
				01	9,259.00	26,882
ALDABRA 26 FED 8H	300153862400	2/28/2015	2015	02	5,068.00	12,820
ALDABRA 27 FED 1H	300153862500	2/28/2015	2015	02	3,473.00	13,566
				02	8,541.00	26,386
ALDABRA 26 FED 8H	300153862400	3/31/2015	2015	03	4,379.00	12,669
ALDABRA 27 FED 1H	300153862500	3/31/2015	2015	03	4,559.00	13,217
				03	8,938.00	25,886
ALDABRA 26 FED 8H	300153862400	4/30/2015	2015	04	3,812.00	12,542
ALDABRA 27 FED 1H	300153862500	4/30/2015	2015	04	4,084.00	12,971
				04	7,896.00	25,513
ALDABRA 26 FED 8H	300153862400	5/31/2015	2015	05	4,058.00	10,156
ALDABRA 27 FED 1H	300153862500	5/31/2015	2015	05	2,638.00	9,631
				05	6,696.00	19,787
ALDABRA 26 FED 8H	300153862400	6/30/2015	2015	06	3,405.00	8,485
ALDABRA 27 FED 1H	300153862500	6/30/2015	2015	06	3,198.00	11,495
				06	6,603.00	19,980
					47,933.00	144,434