

## Bratcher, Mike, EMNRD

---

**From:** Nick Williams [nick@sportenvironmental.com]  
**Sent:** Thursday, September 23, 2010 9:26 AM  
**To:** Bratcher, Mike, EMNRD  
**Attachments:** IMG\_1960.jpg; IMG\_1966.jpg; IMG\_1967.jpg; IMG\_1962.jpg

Mike,

Just wanted to send you a few pictures and a recap of what we did yesterday and what we discussed.

We removed oil affected soil around cellar at pump jack. We placed all of this soil on a liner to be removed and disposed of at an offsite location (manifest can be provided). We then dug out an area approximately 5 feet in depth and 15 feet in length on the east side of the wellhead. We also removed 5 feet in depth and 25 feet in length on the south side of the wellhead. As the pictures show this soil was piled separately for use as a diversionary structure between the pit and the location. In addition to this soil removal, we dug holes at the sample locations denoted East 3, South 3 and West 2. These holes were approximately 5'x5' in surface area with varying depths. East 3 we dug down about 3 feet, South 3 we dug down approximately 10 feet, and West 2 we dug approximately 5 feet. By digging in all of these aforementioned locations we were attempting to remove any hydrocarbon concerns from the location. I will be providing analysis of the pit walls and floor of the East 3, South 3 and West 2 locations to confirm this fact. Until we have confirmed through analysis that we have successfully removed any hydrocarbon contamination these areas will remain open. Once we have confirmed the results of the trench locations, clean dirt will be brought in to fill the excavation area. As previously mentioned the excavated dirt with the highest levels of hydrocarbon contamination will be removed to an approved disposal facility, while the remaining soil will be used to create a diversionary structure between the pit and the location.

From our phone conversation yesterday, 9/22/2010 we had concluded that it was in your judgment not worth chasing chlorides on this site. I have field titration results that I can provide for all soils that were removed on 9/22/2010. If you would like me to provide you with a copy of these I would be more than happy to. In addition the client has been working diligently on the site to make some general improvements. Two out of service tanks have been removed, the firewall around the tanks has been improved and there are continuing efforts to clean up and maintain the area around the wellhead. Pictures will be provided once all maintenance efforts have been completed in order to confirm they are up to your standards.

I want to thank you again for all of your help and guidance with this site. It is our goal to be in full compliance with the wishes of the OCD and it makes it a much more enjoyable experience when we can work hand-in-hand with you to complete a task. Please let me know if there is anything else you would like to see taken care of at this site. As I mentioned I will be providing you will lab analysis of east 3, south 3 and west 2 excavation for TPH confirmation, trucking manifests for disposal of contaminated soil and pictures of continued clean-up efforts by the client. If there is anything else you can think of that you need please feel free to e-mail me back or call me at 432-553-1963. Thank you again for all of your help.



**NICHOLAS R. WILLIAMS**

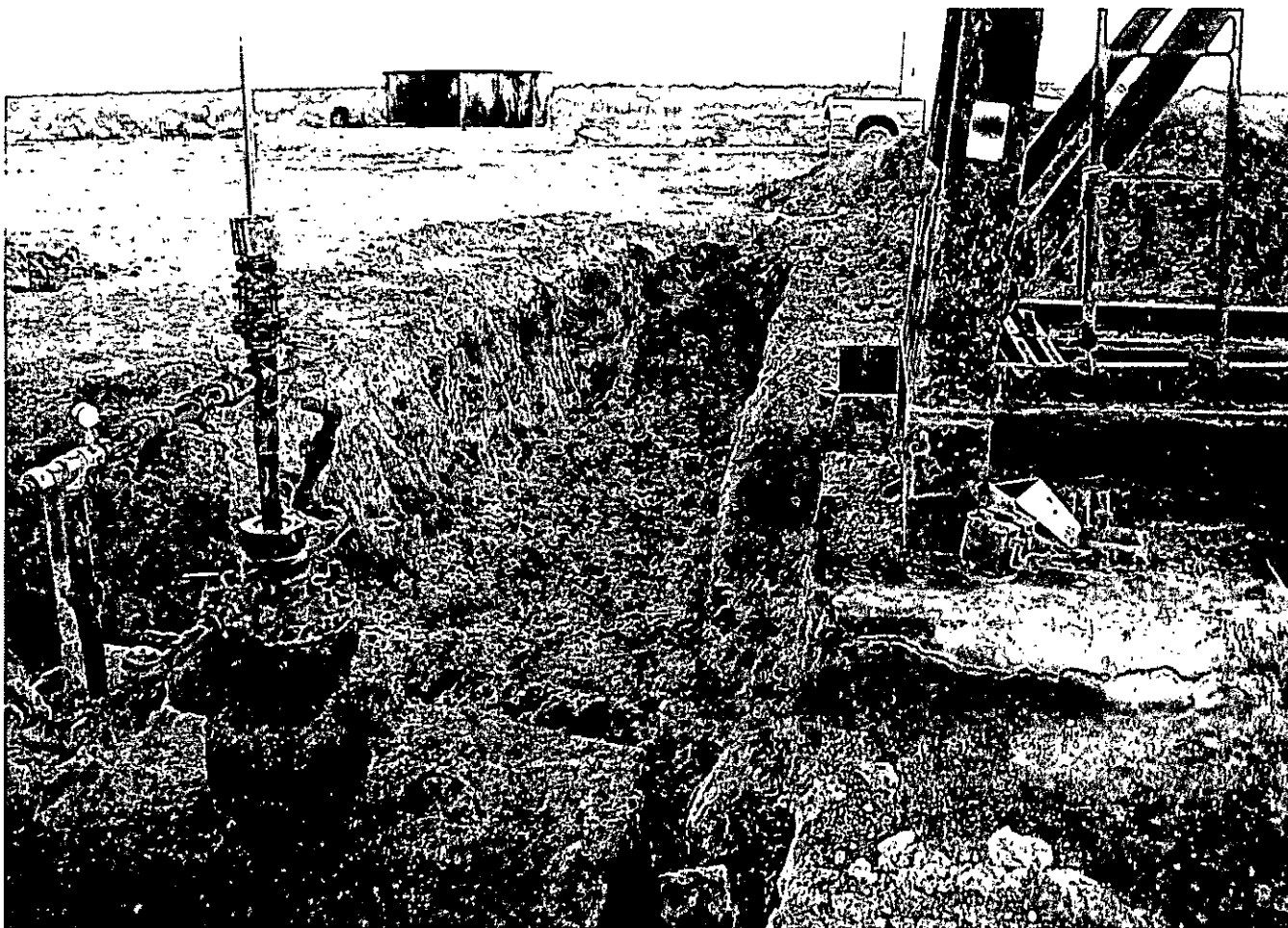
*Environmental Coordinator*

Sport Environmental Services, PLLC  
502 North Big Spring Street  
Midland, Texas 79701  
nick@sportenvironmental.com  
Business: 432.683.1100  
Fax: 888.500.0622  
Cell: 432-553-1963

CONFIDENTIALITY NOTICE: This message (including attachments) is subject as a confidential communication and is intended solely for the use of the addressee. It is not intended for transmission to, or receipt by, any unauthorized person. If you are not the intended recipient or received these documents by mistake, please contact the sender by return e-mail. If you are not the intended recipient, you are hereby notified that any disclosure, copying, distribution, action or reliance upon the contents of the documents is strictly prohibited.



SW Royalties Malaga A#2 OIS-23287 9/22/10 Photos by Spent LNU.



SW Royalties Malaga A#2 OIS-23287 9/22/10 Photos by Spout Env.