

PCDH8873746
1826

Leking, Geoffrey R, EMNRD

From: Leking, Geoffrey R, EMNRD
Sent: Tuesday, November 27, 2012 3:18 PM
To: 'Joel Lowry'
Subject: RE: Trunk "O" #5 (RP-1826) -- Permission to Backfill

Joel

Very good. Your submittal indicates that SUG has adequately delineated and remediated the site to OCD RRALs. The site is approved for backfilling. Thank you.

Geoffrey Leking
Environmental Specialist
NMOCD-Hobbs
1625 N. French Drive
Hobbs, NM 88240
Office: (575) 393-6161 Ext. 113
Cell: (575) 399-2990
email: geoffreyr.leking@state.nm.us

From: Joel Lowry [mailto:jwlowry@basinenv.com]
Sent: Tuesday, November 27, 2012 3:12 PM
To: Leking, Geoffrey R, EMNRD
Subject: RE: Trunk "O" #5 (RP-1826) -- Permission to Backfill

Geoff,

You are absolutely right. It should have read the "further delineation would be required in the area represented by soil sample "South Wall @ 6". I apologize for the confusion. We extended a trench toward the south when our laboratory results came back at 287 ppm Chloride. It was a typographical error and I apologize. Sorry.

Respectfully,

Joel

-----Original Message-----

From: Leking, Geoffrey R, EMNRD
To: Joel Lowry
Subject: RE: Trunk "O" #5 (RP-1826) -- Permission to Backfill
Sent: Nov 27 '12 2:53pm

Joel

Paragraph 4 – Last line – Text reads “Based on laboratory analytical results, it was determined that the excavation sidewalls had been sufficiently advanced, but further delineation would be required in the area

represented by soil sample East Wall @ 2.5'." However, further delineation was performed at the south wall. Please clarify. Thank you.

Geoffrey Leking

Environmental Specialist

NMOCD-Hobbs

1625 N. French Drive

Hobbs, NM 88240

Office: (575) 393-6161 Ext. 113

Cell: (575) 399-2990

email: geoffreyr.leking@state.nm.us

From: Joel Lowry [<mailto:jwlowry@basinenv.com>]

Sent: Tuesday, November 27, 2012 11:45 AM

To: Leking, Geoffrey R, EMNRD

Cc: Rose Slade

Subject: Trunk "O" #5 (RP-1826) -- Permission to Backfill

Mr. Leking,

This email has been prepared in regards to Southern Union Gas's Trunk "O" #5 (RP-1826) Historical release site. The release site is located on property owned by Southern Union Gas; the initial C-141 indicated the depth to groundwater is approximately 100' bgs.

The release was discovered on March 19, 2008 and was reported to the NMOCD March 26, 2008. The initial C-141 indicated approximately 15 bbls of crude oil and 50,000 Mcf of natural gas was released, impacting an area measuring less than 1,000 square feet.

On November 7, 2012, Basin Environmental responded to the release site and excavated the impacted area. The excavation floor and sidewalls were advanced until photo-ionization readings and chloride field tests suggested TPH and chloride concentrations were less than NMOCD regulatory standards. The final dimensions of the excavation were approximately 40 feet in length, 30 feet in width, and 3 feet in depth. The southwestern portion of the excavation was advanced to 9 feet bgs in an effort to locate pipelines.

On November 11, 2012, Basin collected seven (7) confirmation soil samples (South Wall @ 6', West Wall @

2.5', North Wall @ 3', East Wall @ 2.5', South Floor @ 9', West Floor @ 3' and East Floor @ 3') from the excavation floor and sidewalls and submitted them to the laboratory analysis of chloride and TPH concentrations. Chloride concentrations ranged from 6.63 mg/Kg for soil sample West Wall @ 2.5' to 287 mg/Kg for soil sample South Wall @ 6'. TPH concentrations were less than the laboratory method detection limit in each of the submitted soil samples with the exception of soil sample East Wall @ 2.5' which had a concentration of 317 mg/Kg. Soil samples East Wall @ 2.5' and South Floor @ 9' were also analyzed for BTEX constituent concentrations. Total BTEX concentrations ranged from less than the method detection limit for soil sample East Wall @ 2.5' to 0.02619 for soil sample "South Floor @ 9'". Based on laboratory analytical results, it was determined that the excavation sidewalls had been sufficiently advanced, but further delineation would be required in the area represented by soil sample East Wall @ 2.5'.

During this time the stockpiled material was also sampled for BTEX, TPH and chloride concentrations. Soil sample "Stockpile" had a BTEX concentration of 0.0325 mg/Kg, a TPH concentration of 30.9 mg/Kg and a chloride concentration of 129 mg/Kg. Based on laboratory analytical results, Southern Union is requesting permission to use the stockpiled material to backfill the excavation.

On November 23, 2012, a delineation trench was advanced in the area represented by soil sample "South Wall @ 6'" in an effort to determine the horizontal extent of soil impact. On advancing the delineation trench, one (1) soil sample (South Wall #2) was collected and submitted to the laboratory for analysis of chloride concentrations. Analytical results indicated the concentration of chloride was 13.3 mg/Kg. Based on laboratory analytical results it was determined horizontal delineation had been achieved.

With your permission, Southern Union would like to begin backfilling the excavation with the material stockpiled on site. On completion, Southern Union will submit a "Remediation Summary & Site Closure Request" to the NMOCD, documenting remediation activities and results from confirmation soil samples.

For your convenience, a site/sample location map, soil chemistry table and laboratory analytical results are attached.

Respectfully,

Joel Lowry

Leking, Geoffrey R, EMNRD

From: Joel Lowry <jwlowry@basinenv.com>
Sent: Tuesday, November 27, 2012 3:12 PM
To: Leking, Geoffrey R, EMNRD
Subject: RE: Trunk "O" #5 (RP-1826) -- Permission to Backfill

HOBBS OCD

NOV 27 2012

RECEIVED

Geoff,

You are absolutely right. It should have read the "further delineation would be required in the area represented by soil sample "South Wall @ 6". I apologize for the confusion. We extended a trench toward the south when our laboratory results came back at 287 ppm Chloride. It was a typographical error and I apologize. Sorry.

Respectfully,

Joel

-----Original Message-----

From: Leking, Geoffrey R, EMNRD
To: Joel Lowry
Subject: RE: Trunk "O" #5 (RP-1826) -- Permission to Backfill
Sent: Nov 27 '12 2:53pm

Joel

Paragraph 4 – Last line – Text reads “Based on laboratory analytical results, it was determined that the excavation sidewalls had been sufficiently advanced, but further delineation would be required in the area represented by soil sample East Wall @ 2.5’.” However, further delineation was performed at the south wall. Please clarify. Thank you.

Geoffrey Leking

Environmental Specialist

NMOCD-Hobbs

1625 N. French Drive

Hobbs, NM 88240

Office: (575) 393-6161 Ext. 113

Cell: (575) 399-2990

email: geoffreyr.leking@state.nm.us

From: Joel Lowry [<mailto:jwlowry@basinenv.com>]
Sent: Tuesday, November 27, 2012 11:45 AM
To: Leking, Geoffrey R, EMNRD
Cc: Rose Slade
Subject: Trunk "O" #5 (RP-1826) -- Permission to Backfill

Mr. Leking,

This email has been prepared in regards to Southern Union Gas's Trunk "O" #5 (RP-1826) Historical release site. The release site is located on property owned by Southern Union Gas; the initial C-141 indicated the depth to groundwater is approximately 100' bgs.

The release was discovered on March 19, 2008 and was reported to the NMOCD March 26, 2008. The initial C-141 indicated approximately 15 bbls of crude oil and 50,000 Mcf of natural gas was released, impacting an area measuring less than 1,000 square feet.

On November 7, 2012, Basin Environmental responded to the release site and excavated the impacted area. The excavation floor and sidewalls were advanced until photo-ionization readings and chloride field tests suggested TPH and chloride concentrations were less than NMOCD regulatory standards. The final dimensions of the excavation were approximately 40 feet in length, 30 feet in width, and 3 feet in depth. The southwestern portion of the excavation was advanced to 9 feet bgs in an effort to locate pipelines.

On November 11, 2012, Basin collected seven (7) confirmation soil samples (South Wall @ 6', West Wall @ 2.5', North Wall @ 3', East Wall @ 2.5', South Floor @ 9', West Floor @ 3' and East Floor @ 3') from the excavation floor and sidewalls and submitted them to the laboratory analysis of chloride and TPH concentrations. Chloride concentrations ranged from 6.63 mg/Kg for soil sample West Wall @ 2.5' to 287 mg/Kg for soil sample South Wall @ 6'. TPH concentrations were less than the laboratory method detection limit in each of the submitted soil samples with the exception of soil sample East Wall @ 2.5' which had a concentration of 317 mg/Kg. Soil samples East Wall @ 2.5' and South Floor @ 9' were also analyzed for BTEX constituent concentrations. Total BTEX concentrations ranged from less than the method detection limit for soil sample East Wall @ 2.5' to 0.02619 for soil sample "South Floor @ 9'". Based on laboratory analytical results, it was determined that the excavation sidewalls had been sufficiently advanced, but further delineation would be required in the area represented by soil sample East Wall @ 2.5'.

During this time the stockpiled material was also sampled for BTEX, TPH and chloride concentrations. Soil sample "Stockpile" had a BTEX concentration of 0.0325 mg/Kg, a TPH concentration of 30.9 mg/Kg and a chloride concentration of 129 mg/Kg. Based on laboratory analytical results, Southern Union is requesting permission to use the stockpiled material to backfill the excavation.

On November 23, 2012, a delineation trench was advanced in the area represented by soil sample "South Wall @ 6'" in an effort to determine the horizontal extent of soil impact. On advancing the delineation trench, one (1) soil sample (South Wall #2) was collected and submitted to the laboratory for analysis of chloride

concentrations. Analytical results indicated the concentration of chloride was 13.3 mg/Kg. Based on laboratory analytical results it was determined horizontal delineation had been achieved.

With your permission, Southern Union would like to begin backfilling the excavation with the material stockpiled on site. On completion, Southern Union will submit a "Remediation Summary & Site Closure Request" to the NMOCD, documenting remediation activities and results from confirmation soil samples.

For your convenience, a site/sample location map, soil chemistry table and laboratory analytical results are attached.

Respectfully,

Joel Lowry

Leking, Geoffrey R, EMNRD

From: Joel Lowry <jwlowry@basinenv.com>
Sent: Tuesday, November 27, 2012 11:45 AM
To: Leking, Geoffrey R, EMNRD
Cc: Rose Slade
Subject: Trunk "O" #5 (RP-1826) -- Permission to Backfill
Attachments: Trunk_O_5(1826)_Attachments.pdf

HOBBS OCD

NOV 27 2012

RECEIVED

Mr. Leking,

This email has been prepared in regards to Southern Union Gas's Trunk "O" #5 (RP-1826) Historical release site. The release site is located on property owned by Southern Union Gas; the initial C-141 indicated the depth to groundwater is approximately 100' bgs.

The release was discovered on March 19, 2008 and was reported to the NMOCD March 26, 2008. The initial C-141 indicated approximately 15 bbls of crude oil and 50,000 Mcf of natural gas was released, impacting an area measuring less than 1,000 square feet.

On November 7, 2012, Basin Environmental responded to the release site and excavated the impacted area. The excavation floor and sidewalls were advanced until photo-ionization readings and chloride field tests suggested TPH and chloride concentrations were less than NMOCD regulatory standards. The final dimensions of the excavation were approximately 40 feet in length, 30 feet in width, and 3 feet in depth. The southwestern portion of the excavation was advanced to 9 feet bgs in an effort to locate pipelines.

On November 11, 2012, Basin collected seven (7) confirmation soil samples (South Wall @ 6', West Wall @ 2.5', North Wall @ 3', East Wall @ 2.5', South Floor @ 9', West Floor @ 3' and East Floor @ 3') from the excavation floor and sidewalls and submitted them to the laboratory analysis of chloride and TPH concentrations. Chloride concentrations ranged from 6.63 mg/Kg for soil sample West Wall @ 2.5' to 287 mg/Kg for soil sample South Wall @ 6'. TPH concentrations were less than the laboratory method detection limit in each of the submitted soil samples with the exception of soil sample East Wall @ 2.5' which had a concentration of 317 mg/Kg. Soil samples East Wall @ 2.5' and South Floor @ 9' were also analyzed for BTEX constituent concentrations. Total BTEX concentrations ranged from less than the method detection limit for soil sample East Wall @ 2.5' to 0.02619 for soil sample "South Floor @ 9'". Based on laboratory analytical results, it was determined that the excavation sidewalls had been sufficiently advanced, but further delineation would be required in the area represented by soil sample East Wall @ 2.5'. → SOUTH WALL @ 6.0' SEE ADDITIONAL EMAIL

During this time the stockpiled material was also sampled for BTEX, TPH and chloride concentrations. Soil sample "Stockpile" had a BTEX concentration of 0.0325 mg/Kg, a TPH concentration of 30.9 mg/Kg and a chloride concentration of 129 mg/Kg. Based on laboratory analytical results, Southern Union is requesting permission to use the stockpiled material to backfill the excavation.

On November 23, 2012, a delineation trench was advanced in the area represented by soil sample "South Wall @ 6'" in an effort to determine the horizontal extent of soil impact. On advancing the delineation trench, one (1) soil sample (South Wall #2) was collected and submitted to the laboratory for analysis of chloride concentrations. Analytical results indicated the concentration of chloride was 13.3 mg/Kg. Based on laboratory analytical results it was determined horizontal delineation had been achieved.

With your permission, Southern Union would like to begin backfilling the excavation with the material stockpiled on site. On completion, Southern Union will submit a "Remediation Summary & Site Closure Request" to the NMOCD, documenting remediation activities and results from confirmation soil samples.

For your convenience, a site/sample location map, soil chemistry table and laboratory analytical results are attached.

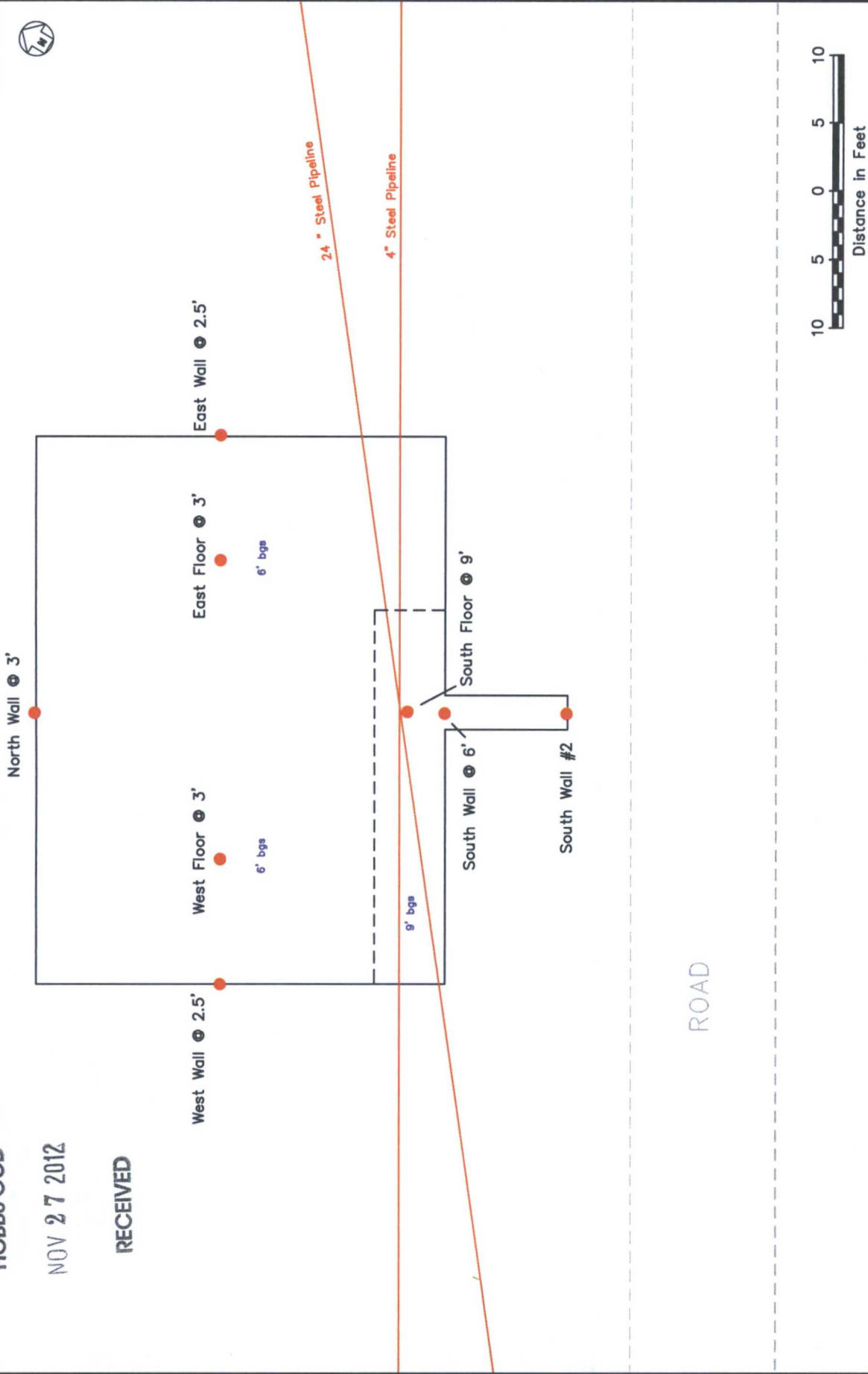
Respectfully,

Joel Lowry

HOBBS OGD

NOV 27 2012

RECEIVED



Legend

- Sample Location
- - - Excavation Extent
- Road
- Pipeline
- 6' bgs

Figure 2
Site & Sample Location Map
Southern Union Gas Services
Trunk "O" #5
NMOCD Ref RP-1826
Lea County, New Mexico

Basin Environmental Services

Prep By: JWL
November 27, 2012
Checked By: BUA
Scale 1"=10'

HOBBS OCD

NOV 27 2012

RECEIVED

TABLE 1

CONCENTRATIONS OF BENZENE, BTEX, TPH & CHLORIDE IN SOIL

SOUTHERN UNION GAS SERVICES

TRUNK "O" #5

HISTORICAL RELEASE SITE

LEA COUNTY, NEW MEXICO

NMOCD REF# 1RP-1826

SAMPLE LOCATION	SAMPLE DEPTH (BGS)	SAMPLE DATE	SOIL STATUS	METHOD: EPA SW 846-8021B, 5030					METHOD: 8015M				TOTAL TPH C ₆ -C ₃₅ (mg/Kg)	METHOD: E300.0 CHLORIDE (mg/Kg)
				BENZENE (mg/Kg)	TOLUENE (mg/Kg)	ETHYL-BENZENE (mg/Kg)	TOTAL XYLENES (mg/Kg)	TOTAL BTEX (mg/Kg)	GRO C ₆ -C ₁₂ (mg/Kg)	DRO C ₁₂ -C ₂₈ (mg/Kg)	ORO C ₂₈ -C ₃₅ (mg/Kg)			
South Wall @ 6'	6'	11/13/2012	In-Situ	-	-	-	-	-	-	<18.7	<18.7	<18.7	<18.7	287
West Wall @ 2.5'	2.5'	11/13/2012	In-Situ	-	-	-	-	-	-	<17.8	<17.8	<17.8	<17.8	6.63
North Wall @ 3'	3'	11/13/2012	In-Situ	-	-	-	-	-	-	<18.0	<18.0	<18.0	<18.0	8.50
East Wall @ 2.5'	2.5'	11/13/2012	In-Situ	<0.00105	<0.00210	<0.00105	<0.00210	<0.00210	18.0	279	20.2	317	238	
South Floor @ 9'	9'	11/13/2012	In-Situ	<0.00109	<0.00218	0.00448	0.0217	0.02618	<16.2	<16.2	<16.2	<16.2	<16.2	14.7
West Floor @ 3'	3'	11/13/2012	In-Situ	-	-	-	-	-	<16.3	<16.3	<16.3	<16.3	<16.3	16.8
East Floor @ 3'	3'	11/13/2012	In-Situ	-	-	-	-	-	<17.3	<17.3	<17.3	<17.3	<17.3	142
Stockpile	N/A	11/13/2012	Stockpile	<0.00124	0.0325	<0.00124	<0.00248	0.0325	<18.6	30.9	<18.6	30.9	<18.6	129
South Wall #2	6'	11/23/2012	In-Situ	-	-	-	-	-	-	-	-	-	-	13.3
NMOCD Standard				10				50					1,000	500

- = Not analyzed.



HOBBE Certificate of Analysis Summary 452569
Southern Union Gas Services- Monahans, Monahans, TX
NOV 27 2012 Project Name: Trunk "O" #5 (RP-1826)



Project Id:

Contact: Joel Lowry

Project Location: Lea County, NM

Date Received in Lab: Thu Nov-15-12 10:56 am

Report Date: 20-NOV-12

Project Manager: Nicholas Straccione

RECEIVED

Analysis Requested		Lab Id:	452569-001	452569-002	452569-003	452569-004	452569-005	452569-006
Field Id:		South Wall @ 6'	West Wall @ 2.5'	North Wall @ 3'	East Wall @ 2.5'	South Wall @ 9'	West Floor @ 3'	
Depth:								
Matrix:		SOIL	SOIL	SOIL	SOIL	SOIL	SOIL	SOIL
Sampled:		Nov-13-12 13:25	Nov-13-12 13:30	Nov-13-12 13:35	Nov-13-12 13:41	Nov-13-12 13:45	Nov-13-12 13:48	
Extracted:								
Analyzed:								
Units/RL:								
Benzene								
Toluene								
Ethylbenzene								
m_p-Xylenes								
o-Xylene								
Total Xylenes								
Total BTEX								
Inorganic Anions by EPA 300/300.1								
SUB: TX104704215								
Extracted:		Nov-16-12 10:14	Nov-16-12 10:14	Nov-16-12 10:14	Nov-16-12 10:14	Nov-16-12 10:14	Nov-16-12 10:14	Nov-16-12 10:14
Analyzed:		Nov-16-12 11:39	Nov-16-12 11:56	Nov-16-12 12:14	Nov-16-12 12:31	Nov-16-12 13:05	Nov-16-12 13:22	Nov-16-12 13:22
Units/RL:		mg/kg RL	mg/kg RL	mg/kg RL	mg/kg RL	mg/kg RL	mg/kg RL	mg/kg RL
Chloride		287 2.62	6.63 2.35	8.50 2.48	238 20.0	14.7 2.23	16.8 2.42	
Percent Moisture								
Extracted:		Nov-15-12 14:40	Nov-15-12 14:40	Nov-15-12 14:40	Nov-15-12 14:40	Nov-15-12 14:40	Nov-15-12 14:40	Nov-15-12 14:40
Analyzed:								
Units/RL:		% RL	% RL	% RL	% RL	% RL	% RL	% RL
Percent Moisture		19.6 1.00	16.0 1.00	16.8 1.00	4.57 1.00	7.89 1.00	8.17 1.00	
TPH By SW8015 Mod								
Extracted:		Nov-15-12 11:15	Nov-15-12 11:15	Nov-15-12 11:15	Nov-15-12 11:15	Nov-15-12 11:15	Nov-15-12 11:15	Nov-15-12 11:15
Analyzed:		Nov-16-12 02:57	Nov-16-12 04:33	Nov-16-12 05:05	Nov-16-12 05:37	Nov-16-12 06:08	Nov-16-12 06:40	Nov-16-12 06:40
Units/RL:		mg/kg RL	mg/kg RL	mg/kg RL	mg/kg RL	mg/kg RL	mg/kg RL	mg/kg RL
C6-C12 Gasoline Range Hydrocarbons		ND 18.7	ND 17.8	ND 18.0	18.0 15.7	ND 16.2	ND 16.3	ND 16.3
C12-C28 Diesel Range Hydrocarbons		ND 18.7	ND 17.8	ND 18.0	279 15.7	ND 16.2	ND 16.3	ND 16.3
C28-C35 Oil Range Hydrocarbons		ND 18.7	ND 17.8	ND 18.0	20.2 15.7	ND 16.2	ND 16.3	ND 16.3
Total TPH		ND 18.7	ND 17.8	ND 18.0	317 15.7	ND 16.2	ND 16.3	ND 16.3

This analytical report, and the entire data package it represents, has been made for your exclusive and confidential use. The interpretations and results expressed throughout this analytical report represent the best judgment of XENCO Laboratories. XENCO Laboratories assumes no responsibility and makes no warranty to the end use of the data hereby presented. Our liability is limited to the amount invoiced for this work order unless otherwise agreed to in writing.

Houston - Dallas - San Antonio - Atlanta - Tampa - Boca Raton - Latin America - Odessa - Corpus Christi

Nicholas Straccione

Nicholas Straccione
Project Manager

Certificate of Analysis Summary 452569

Southern Union Gas Services- Monahans, Monahans, TX

Project Name: Trunk "O" #5 (RP-1826)



Project Id:

Contact: Joel Lowry **RECEIVED**

Project Location: Lea County, NM

Date Received in Lab: Thu Nov-15-12 10:56 am

Report Date: 20-NOV-12

Project Manager: Nicholas Straccione

<i>Analysis Requested</i>		Lab Id:	452569-007	452569-008		
		Field Id:	East Floor @ 3'	Stockpile		
		Depth:				
		Matrix:	SOIL	SOIL		
		Sampled:	Nov-13-12 13:52	Nov-13-12 14:25		
BTEX by EPA 8021B	Extracted:			Nov-20-12 08:30		
	Analyzed:			Nov-20-12 11:43		
	Units/RL:			mg/kg RL		
				ND 0.00124		
				0.00325 0.00248		
Benzene				ND 0.00124		
Toluene				ND 0.00124		
Ethylbenzene				ND 0.00248		
m, p-Xylenes				ND 0.00124		
o-Xylene				ND 0.00124		
Total Xylenes				ND 0.00124		
Total BTEX				0.00325 0.00124		
Inorganic Anions by EPA 300/300.1 SUB: TX104704215	Extracted:		Nov-16-12 10:14	Nov-16-12 10:14		
	Analyzed:		Nov-16-12 13:39	Nov-16-12 13:56		
	Units/RL:		mg/kg RL	mg/kg RL		
Chloride			142 2.40	129 27.6		
Percent Moisture	Extracted:					
	Analyzed:		Nov-15-12 14:40	Nov-15-12 14:40		
	Units/RL:		% RL	% RL		
Percent Moisture			13.2 1.00	19.8 1.00		
TPH By SW8015 Mod	Extracted:		Nov-15-12 11:15	Nov-15-12 11:15		
	Analyzed:		Nov-16-12 07:11	Nov-16-12 07:42		
	Units/RL:		mg/kg RL	mg/kg RL		
C6-C12 Gasoline Range Hydrocarbons			ND 17.3	ND 18.6		
C12-C28 Diesel Range Hydrocarbons			ND 17.3	30.9 18.6		
C28-C35 Oil Range Hydrocarbons			ND 17.3	ND 18.6		
Total TPH			ND 17.3	30.9 18.6		

This analytical report, and the entire data package it represents, has been made for your exclusive and confidential use. The interpretations and results expressed throughout this analytical report represent the best judgment of XENCO Laboratories. XENCO Laboratories assumes no responsibility and makes no warranty to the end use of the data hereby presented. Our liability is limited to the amount invoiced for this work order unless otherwise agreed to in writing.

Houston - Dallas - San Antonio - Atlanta - Tampa - Boca Raton - Latin America - Odessa - Corpus Christi

Nicholas Straccione
Project Manager



HOBBS OCD

Certificate of Analysis Summary 452904

Southern Union Gas Services- Monahans, Monahans, TX

NOV 27 2012

Project Id: RP-1826

Contact: Joel Lowry

Project Location: Lea County, NM

RECEIVED



Date Received in Lab: Wed Nov-21-12 12:53 pm

Report Date: 26-NOV-12

Project Manager: Nicholas Straccione

Analysis Requested	Lab Id:	452904-001			
	Field Id:	South Wall #2			
	Depth:				
	Matrix:	SOIL			
	Sampled:	Nov-19-12 11:55			
Inorganic Anions by EPA 300/300.1 SUB: TX104704215	Extracted:	Nov-23-12 19:29			
	Analyzed:	Nov-23-12 19:29			
	Units/RL:	mg/kg RL 13.3 1.36			
Percent Moisture	Extracted:				
	Analyzed:	Nov-21-12 13:49			
	Units/RL:	% RL 21.2 1.00			
Percent Moisture					

This analytical report, and the entire data package it represents, has been made for your exclusive and confidential use. The interpretations and results expressed throughout this analytical report represent the best judgment of XENCO Laboratories. XENCO Laboratories assumes no responsibility and makes no warranty to the end use of the data hereby presented. Our liability is limited to the amount invoiced for this work order unless otherwise agreed to in writing.

Houston - Dallas - San Antonio - Atlanta - Tampa - Boca Raton - Latin America - Odessa - Corpus Christi

Nicholas Straccione
Project Manager