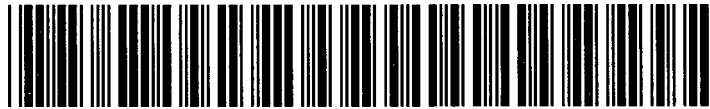




AE Order Number Banner

Report Description

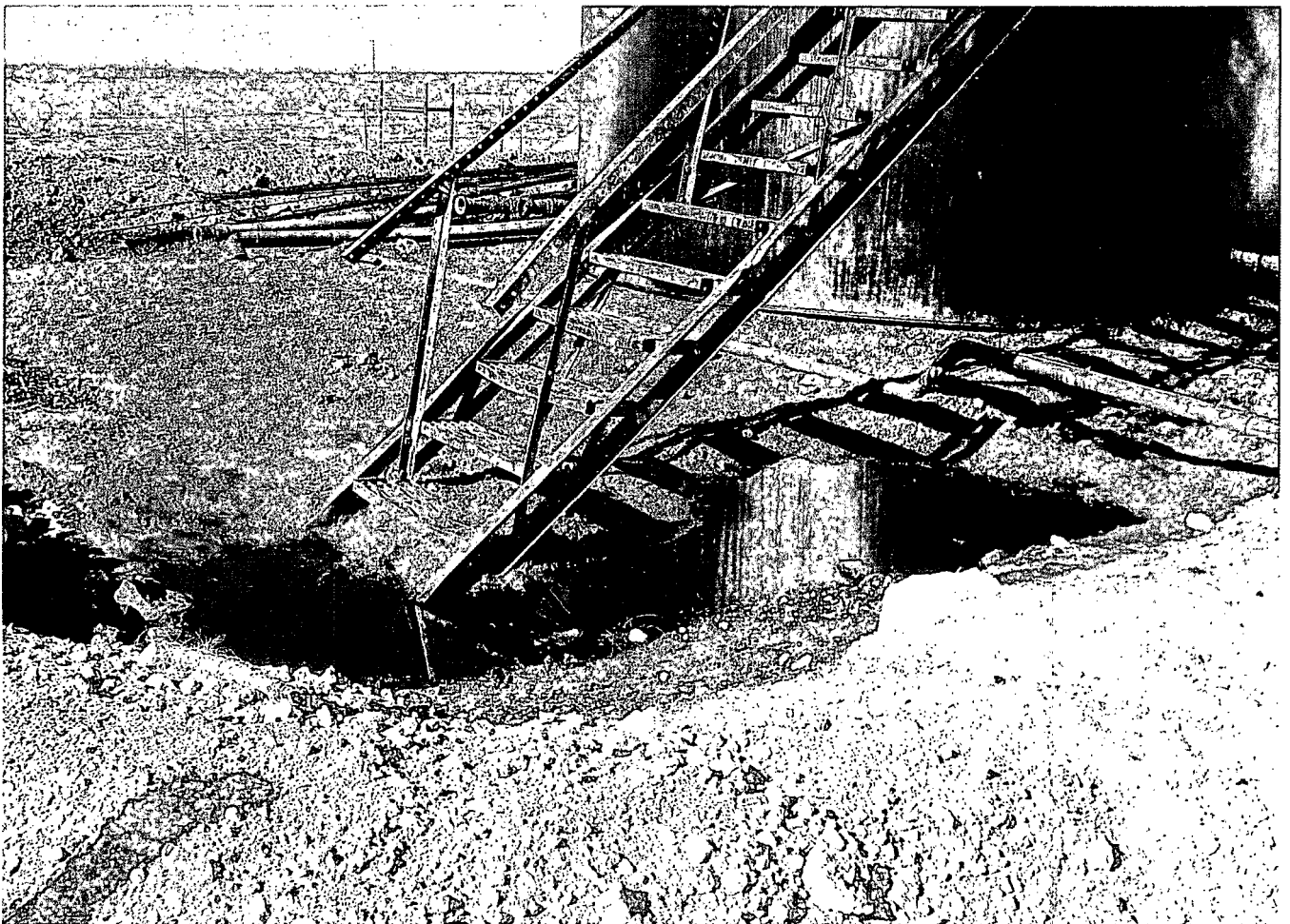
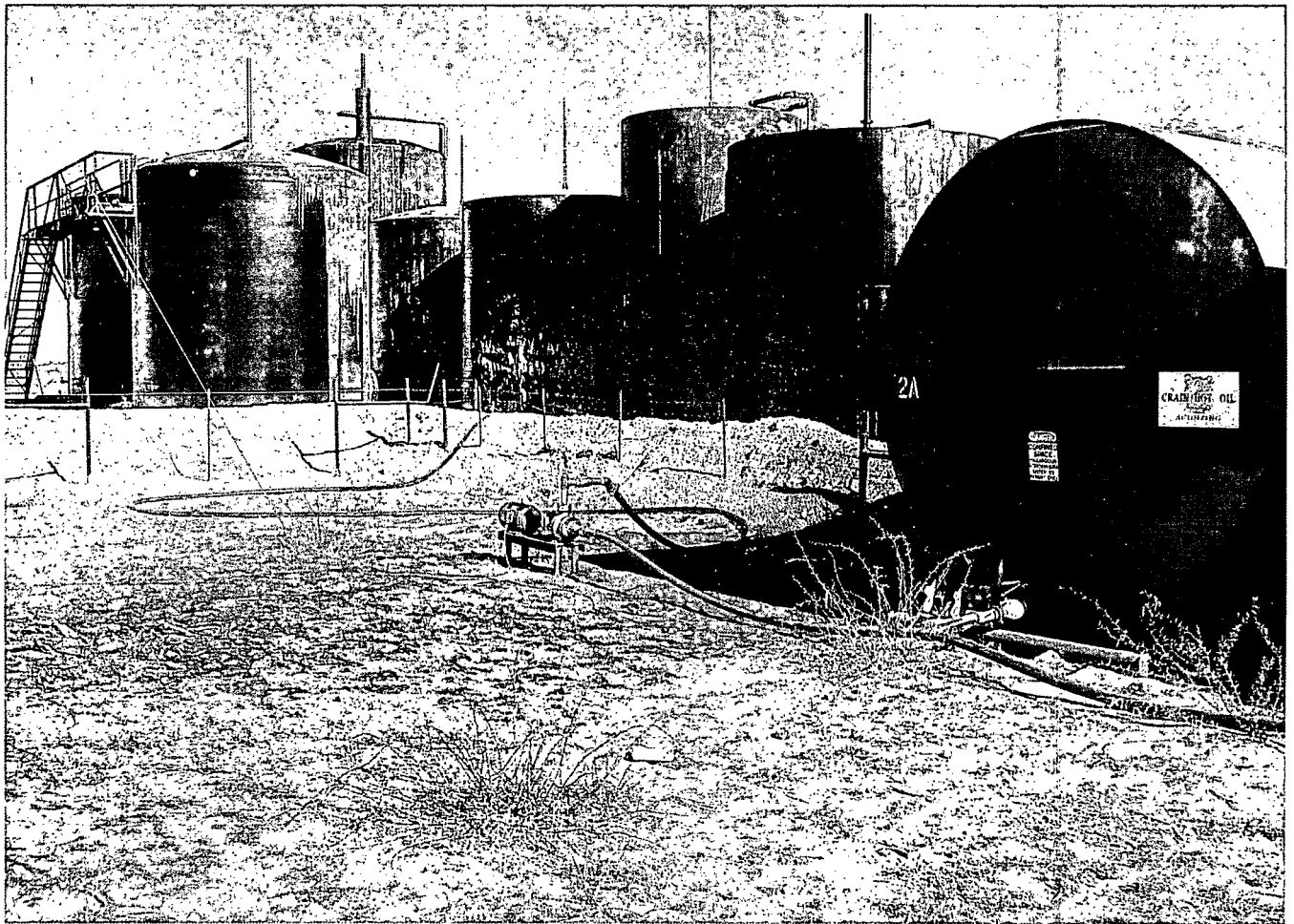
This report shows an AE Order Number in Barcode format for purposes of scanning. The Barcode format is Code 39.



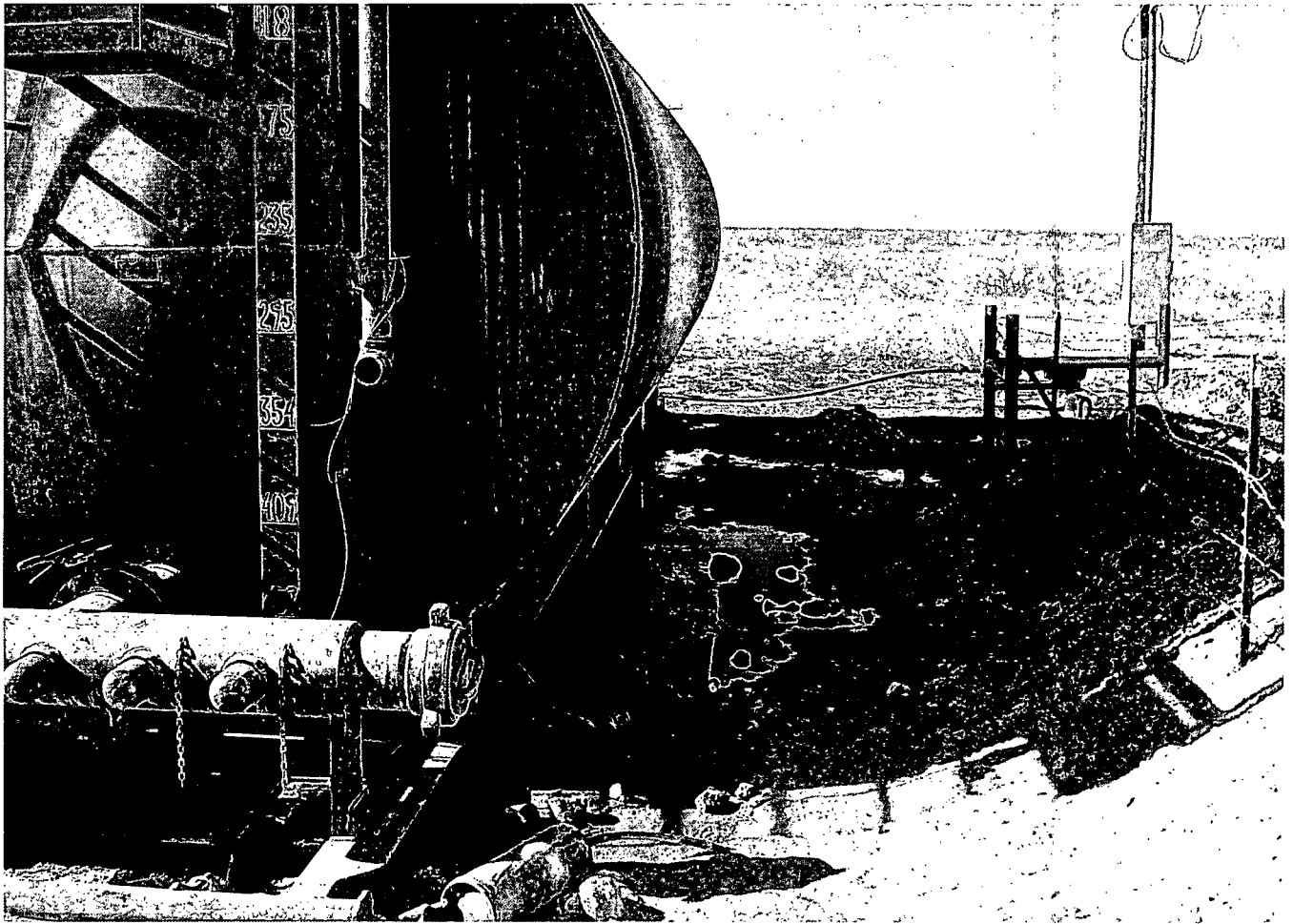
App Number: pGRL1318656118

1RP - 2935

CRAIN'S HOT OIL SERVICE, INC.



12-11-2012 - REPRINT - CRAN HOT OIL SERVICE - GULF DEEP 001 SWD



12-11-2012 REPRINT - GRAIN HOT OIL SERVICE - GULF DEEP #1 SWD

RE: GULF DEEP 001

PENROCD TOOK CONTROL WELL LATER SOLD

Submit 1 Copy To Appropriate District

Office

District I

1625 N. French Dr., Hobbs, NM 88241

District II

1301 W. Grand Ave., Artesia, NM 88210

District III

1000 Rio Brazos Rd., Aztec, NM 87410

District IV

1220 S. St. Francis Dr., Santa Fe, NM 87505

State of New Mexico Energy, Minerals and Natural Resources

TO CRAIN HOT OIL

Form C-103

October 13, 2009

RECEIVED

OIL CONSERVATION DIVISION

OCT 23 2009

HOBBSOCD

1220 South St. Francis Dr.

Santa Fe, NM 87505

WELL API NO.:

30-005-01210

7. Indicate Type of Lease

STATE ☒ FEE ☐

7. State Oil & Gas Lease No.

7. Lease Name or Unit Agreement Name

Gulf Deep

8. Well Number 001

9. OGRID Number

17213

10. Pool name or Wildcat

SWD; San Andres

SUNDRY NOTICES AND REPORTS ON WELLS

(DO NOT USE THIS FORM FOR PROPOSALS TO DRILL OR TO DEEPEN OR PLUG BACK TO A DIFFERENT RESERVOIR USE "APPLICATION FOR PERMIT" (FORM C-101) FOR SUCH PROPOSALS)

1. Type of Well: Oil Well ☐ Gas Well ☐ Other ☒ SWD

2. Name of Operator

Penroc Oil Corporation

3. Address of Operator

P.O. Box 2769 Hobbs, New Mexico 88241-2769

4. Well Location

Unit Letter C: 660 feet from the North line and 1980 feet from the West lineSection 34Township 14SRange 31ENMPM ChavesCounty ☒

11. Elevation (Show whether DR, RKB, RT, GR, etc.)

12. Check Appropriate Box to Indicate Nature of Notice, Report or Other Data

NOTICE OF INTENTION TO:

PERFORM REMEDIAL WORK ☐ PLUG AND ABANDON ☐TEMPORARILY ABANDON ☐ CHANGE PLANS ☐PULL OR ALTER CASING ☐ MULTIPLE COMPL ☐DOWNHOLE COMMINGLE ☐OTHER: ☐

SUBSEQUENT REPORT OF:

REMEDIAL WORK ☐ ALTERING CASING ☐COMMENCE DRILLING OPNS. ☒ P AND A ☐CASING/CEMENT JOB ☐OTHER: ☐

13. Describe proposed or completed operations. (Clearly state all pertinent details, and give pertinent dates, including estimated date of starting any proposed work). SEE RULE 19.15.7.14 NMAC. For Multiple Completions: Attach wellbore diagram of proposed completion or recompletion.

Per NMOCD SWD-1158-0

Set and test anchors

Move in Joes Well Service 10/1/2009

Dig out cellar and remove PA marker x Weld on 9 5/8" x 3000 psi well head equipped with 2-2" outlets and valves

Nipple up BOP

Drill cement plugs

Surface x 405ft x 2350ft x tag plug at 3743ft x pressure test casing to 500psi x OK

Drill out cement plugs to total depth of 4700ft

Circulate clean x Lay down DC x ND BOP x Hang 2 7/8" tubing in well at 3700ft

Shut in pending acquisition of downhole disposal equipment x New Mexico State Land Office SWD easement

Will notify NMOCD of pending MIT

Spud Date:

Rig Release Date:

I hereby certify that the information above is true and complete to the best of my knowledge and belief.

SIGNATURE [Signature] TITLE President DATE October 20, 2009Type or print name M.Y.(Merch)Merchant E-mail address: MYMerch@penrocoil.com PHONE: 575-492-1236

For State Use Only

APPROVED BY: [Signature] TITLE PETROLEUM ENGINEER DATE OCT 26 2009

Conditions of Approval (if any):

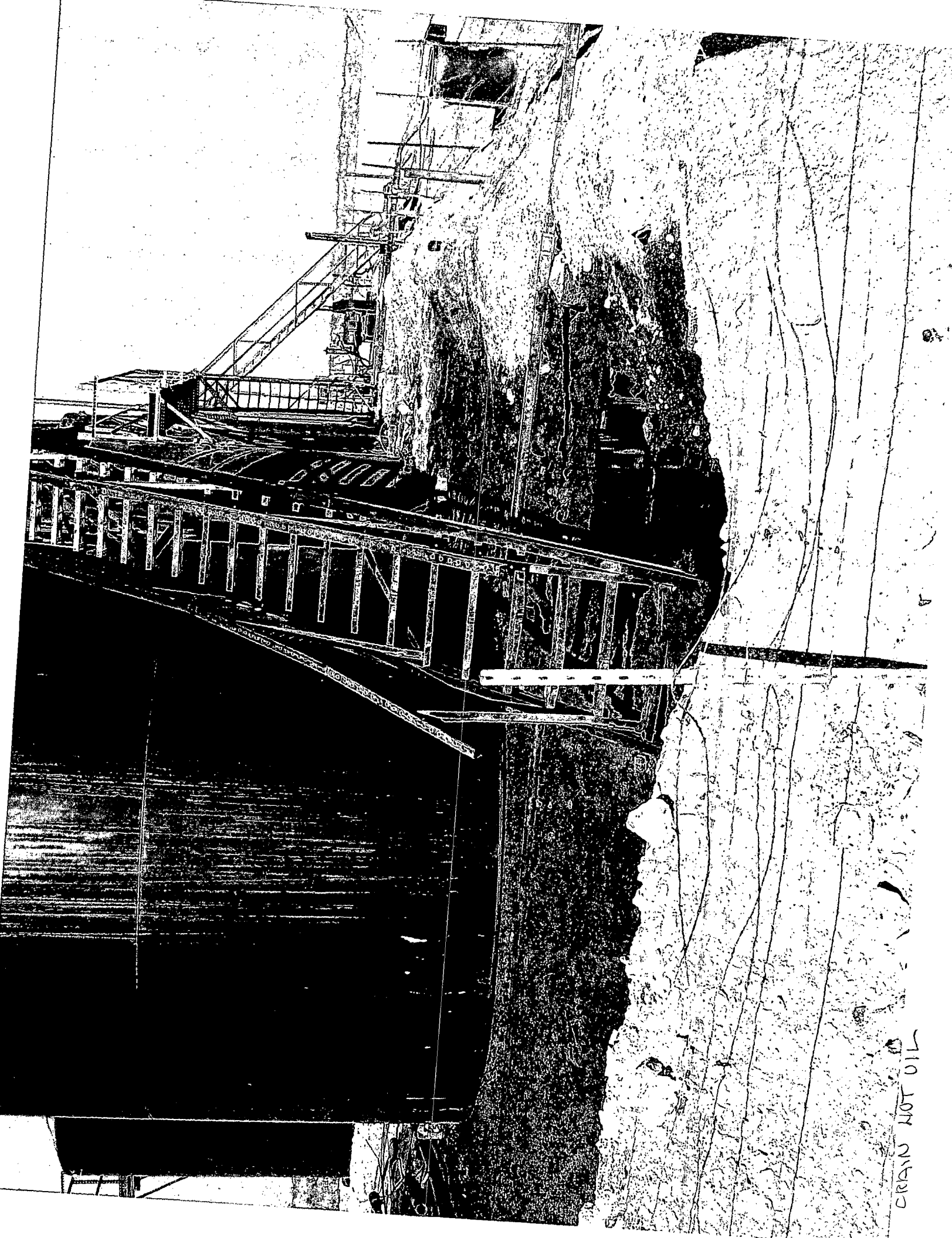


12-11-2012 REPRINT - CRAIN HOT OIL SERVICE - GULF DEEP #1 SWD

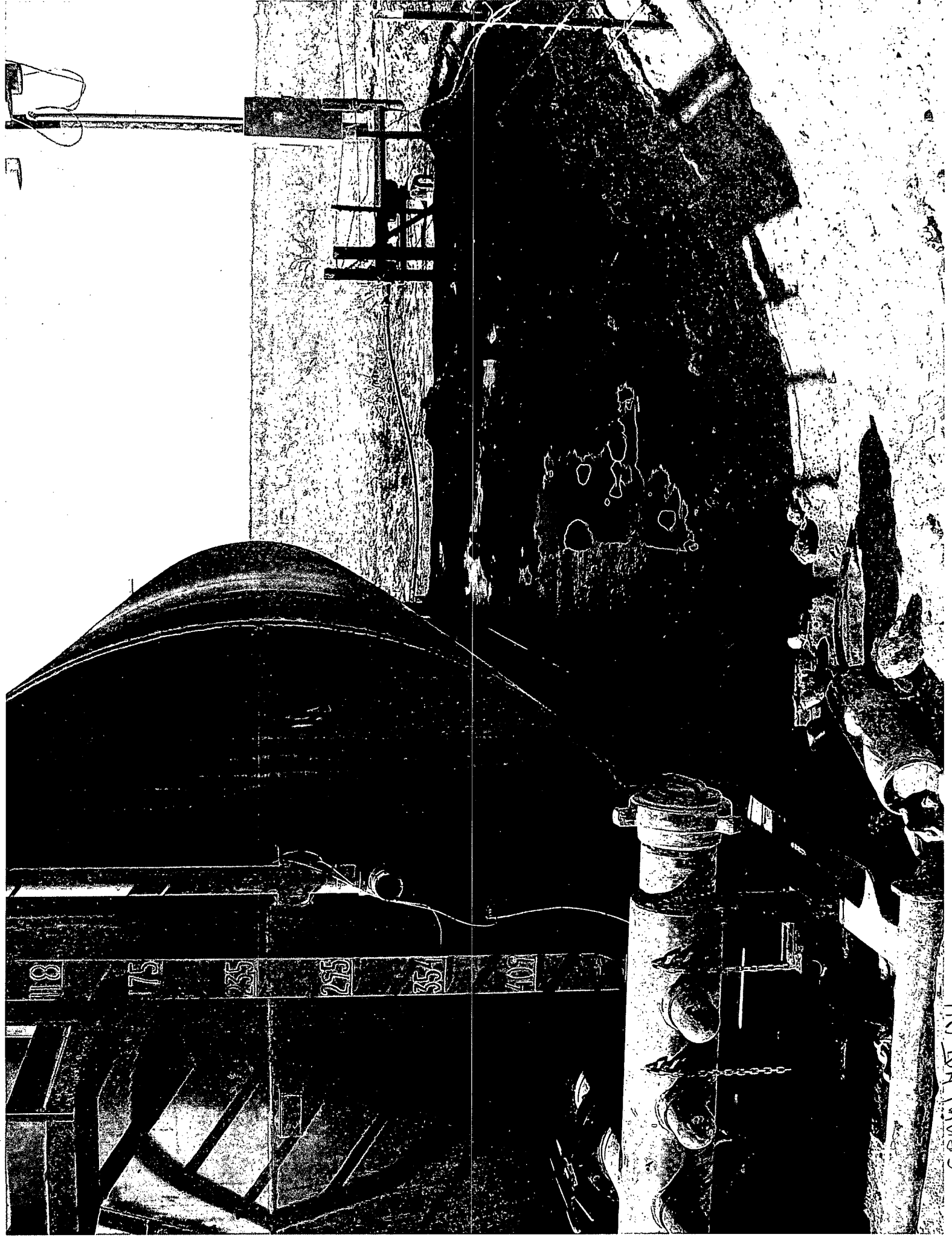
CRAN HOT OIL SERVICE
GULF DEEP #1 SMD SMD-153-A
660' FNL & 1980' FWL
UNIT C, SEC34-T14S-R31E
CHIVES CO., NM APN 30-005-0120
TEL-(575)396-6543

PRIVATE DISPOSAL

KEEP OUT



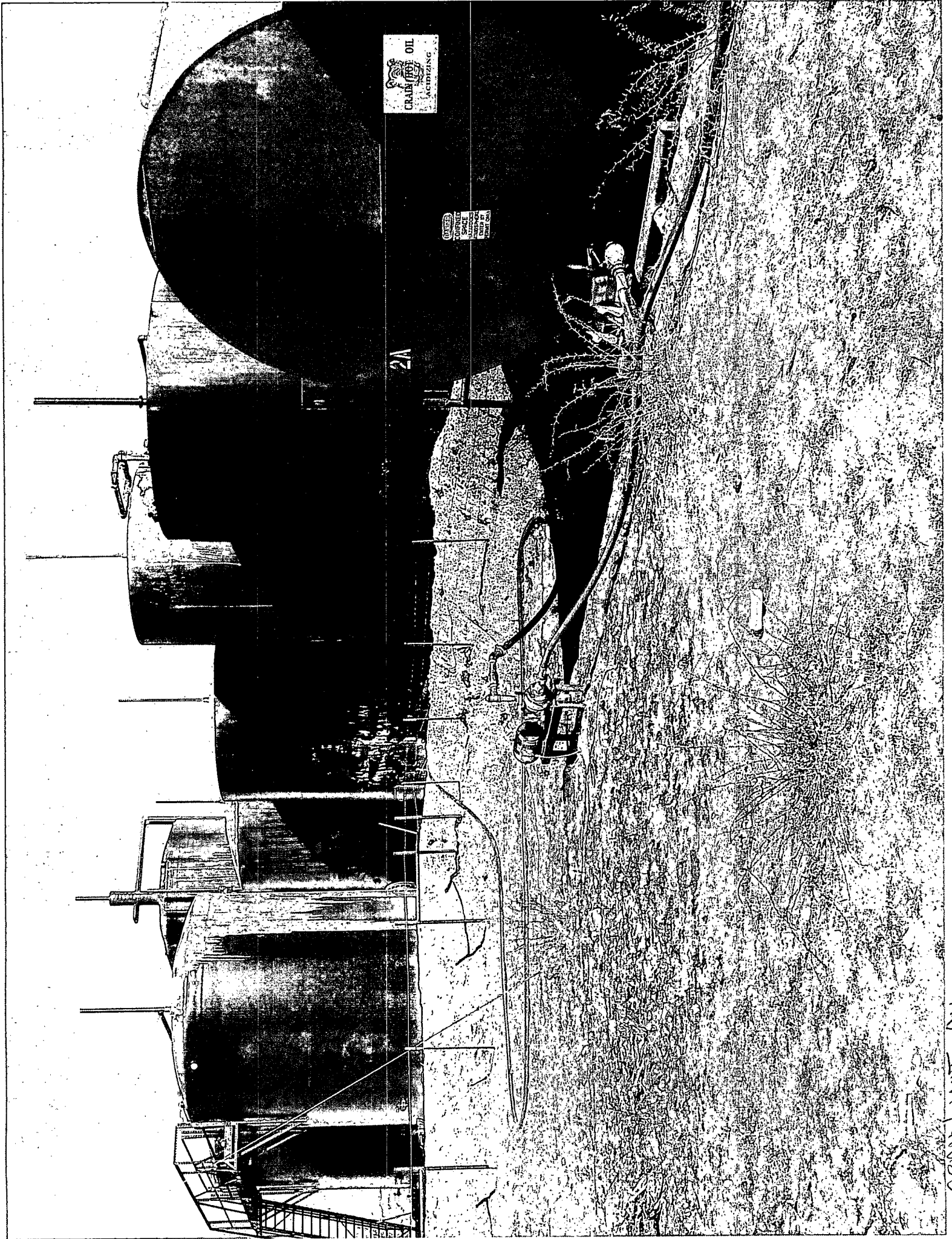
CRAN NOT OIL



CRAIN HOT OIL



CRAN NOT OIL



CRAIN OIL
ACTIVATING

NOTES
1. SPACE
2. SPACE
3. SPACE
4. SPACE
5. SPACE
6. SPACE
7. SPACE
8. SPACE
9. SPACE
10. SPACE
11. SPACE
12. SPACE
13. SPACE
14. SPACE
15. SPACE
16. SPACE
17. SPACE
18. SPACE
19. SPACE
20. SPACE
21. SPACE
22. SPACE
23. SPACE
24. SPACE
25. SPACE
26. SPACE
27. SPACE
28. SPACE
29. SPACE
30. SPACE
31. SPACE
32. SPACE
33. SPACE
34. SPACE
35. SPACE
36. SPACE
37. SPACE
38. SPACE
39. SPACE
40. SPACE
41. SPACE
42. SPACE
43. SPACE
44. SPACE
45. SPACE
46. SPACE
47. SPACE
48. SPACE
49. SPACE
50. SPACE
51. SPACE
52. SPACE
53. SPACE
54. SPACE
55. SPACE
56. SPACE
57. SPACE
58. SPACE
59. SPACE
60. SPACE
61. SPACE
62. SPACE
63. SPACE
64. SPACE
65. SPACE
66. SPACE
67. SPACE
68. SPACE
69. SPACE
70. SPACE
71. SPACE
72. SPACE
73. SPACE
74. SPACE
75. SPACE
76. SPACE
77. SPACE
78. SPACE
79. SPACE
80. SPACE
81. SPACE
82. SPACE
83. SPACE
84. SPACE
85. SPACE
86. SPACE
87. SPACE
88. SPACE
89. SPACE
90. SPACE
91. SPACE
92. SPACE
93. SPACE
94. SPACE
95. SPACE
96. SPACE
97. SPACE
98. SPACE
99. SPACE
100. SPACE

2A

CRAIN OIL