

District I
1625 N. French Dr., Hobbs, NM 88240
District II
811 S. First St., Artesia, NM 88210
District III
1000 Rio Brazos Road, Aztec, NM 87410
District IV
1220 S. St. Francis Dr., Santa Fe, NM 87505

State of New Mexico
Energy Minerals and Natural Resources
Department
Oil Conservation Division
1220 South St. Francis Dr.
Santa Fe, NM 87505

Form C-144
Revised June 6, 2013

For temporary pits, below-grade tanks, and multi-well fluid management pits, submit to the appropriate NMOCD District Office.
For permanent pits submit to the Santa Fe Environmental Bureau office and provide a copy to the appropriate NMOCD District Office.

12643 Pit, Below-Grade Tank, or
Proposed Alternative Method Permit or Closure Plan Application

- Type of action: ☒ Below grade tank registration
☐ Permit of a pit or proposed alternative method
☐ Closure of a pit, below-grade tank, or proposed alternative method
☐ Modification to an existing permit/or registration
☐ Closure plan only submitted for an existing permitted or non-permitted pit, below-grade tank, or proposed alternative method

Instructions: Please submit one application (Form C-144) per individual pit, below-grade tank or alternative request

Please be advised that approval of this request does not relieve the operator of liability should operations result in pollution of surface water, ground water or the environment. Nor does approval relieve the operator of its responsibility to comply with any other applicable governmental authority's rules, regulations or ordinances.

1.
Operator: WPX Energy Production' LLC OGRID #: 120782
Address: PO Box 640/721 S Main Aztec, NM 87410
Facility or well name: Chaco Trunk 3-2 CDP
API Number: _____ OCD Permit Number: _____
U/L or Qtr/Qtr _____ Section 08 Township 23N Range 6W County: Rio Arriba
Center of Proposed Design: Latitude 36.23624N Longitude -107.49781W NAD: ☐ 1927 ☒ 1983
Surface Owner: ☒ Federal ☐ State ☐ Private ☐ Tribal Trust or Indian Allotment

2.
☐ **Pit:** Subsection F, G or J of 19.15.17.11 NMAC
Temporary: ☐ Drilling ☐ Workover
☐ Permanent ☐ Emergency ☐ Cavitation ☐ P&A ☐ Multi-Well Fluid Management Low Chloride Drilling Fluid ☐ yes ☐ no
☐ Lined ☐ Unlined Liner type: Thickness _____ mil ☐ LLDPE ☐ HDPE ☐ PVC ☐ Other _____
☐ String-Reinforced
Liner Seams: ☐ Welded ☐ Factory ☐ Other _____ Volume: _____ bbl Dimensions: L _____ x W _____ x D _____

3.
☒ **Below-grade tank:** Subsection I of 19.15.17.11 NMAC
Volume: 120 bbl Type of fluid: Produced Water
Tank Construction material: Double wall, double bottom, Steel
☒ Secondary containment with leak detection ☐ Visible sidewalls, liner, 6-inch lift and automatic overflow shut-off
☐ Visible sidewalls and liner ☐ Visible sidewalls only ☐ Other _____
Liner type: Thickness _____ mil ☐ HDPE ☐ PVC ☐ Other _____

4.
☐ **Alternative Method:**
Submittal of an exception request is required. Exceptions must be submitted to the Santa Fe Environmental Bureau office for consideration of approval.

5.
Fencing: Subsection D of 19.15.17.11 NMAC (Applies to permanent pits, temporary pits, and below-grade tanks)
☐ Chain link, six feet in height, two strands of barbed wire at top (Required if located within 1000 feet of a permanent residence, school, hospital, institution or church)
☐ Four foot height, four strands of barbed wire evenly spaced between one and four feet
☒ Alternate. Please specify As per BLM specifications

RECEIVED

JAN 30 2015

NMOCD
DISTRICT III

22

6. **Netting:** Subsection E of 19.15.17.11 NMAC (*Applies to permanent pits and permanent open top tanks*)

- ☒ Screen ☐ Netting ☐ Other _____
- ☐ Monthly inspections (If netting or screening is not physically feasible)

7. **Signs:** Subsection C of 19.15.17.11 NMAC

- ☐ 12"x 24", 2" lettering, providing Operator's name, site location, and emergency telephone numbers
- ☒ Signed in compliance with 19.15.16.8 NMAC

8. **Variances and Exceptions:**

Justifications and/or demonstrations of equivalency are required. Please refer to 19.15.17 NMAC for guidance.

Please check a box if one or more of the following is requested, if not leave blank:

- ☒ Variance(s): Requests must be submitted to the appropriate division district for consideration of approval.
- ☐ Exception(s): Requests must be submitted to the Santa Fe Environmental Bureau office for consideration of approval.

9. **Siting Criteria (regarding permitting):** 19.15.17.10 NMAC

Instructions: The applicant must demonstrate compliance for each siting criteria below in the application. Recommendations of acceptable source material are provided below. Siting criteria does not apply to drying pads or above-grade tanks.

General siting

Ground water is less than 25 feet below the bottom of a low chloride temporary pit or below-grade tank.

- ☒ NM Office of the State Engineer - iWATERS database search; ☐ USGS; ☐ Data obtained from nearby wells

☐ Yes ☒ No
☐ NA

Ground water is less than 50 feet below the bottom of a Temporary pit, permanent pit, or Multi-Well Fluid Management pit.

NM Office of the State Engineer - iWATERS database search; USGS; Data obtained from nearby wells

☐ Yes ☐ No
☐ NA

Within incorporated municipal boundaries or within a defined municipal fresh water well field covered under a municipal ordinance adopted pursuant to NMSA 1978, Section 3-27-3, as amended. (**Does not apply to below grade tanks**)

- Written confirmation or verification from the municipality; Written approval obtained from the municipality

☐ Yes ☐ No

Within the area overlying a subsurface mine. (**Does not apply to below grade tanks**)

- Written confirmation or verification or map from the NM EMNRD-Mining and Mineral Division

☐ Yes ☐ No

Within an unstable area. (**Does not apply to below grade tanks**)

- Engineering measures incorporated into the design; NM Bureau of Geology & Mineral Resources; USGS; NM Geological Society; Topographic map

☐ Yes ☐ No

Within a 100-year floodplain. (**Does not apply to below grade tanks**)

- FEMA map

☐ Yes ☐ No

Below Grade Tanks

Within 100 feet of a continuously flowing watercourse, significant watercourse, lake bed, sinkhole, wetland or playa lake (measured from the ordinary high-water mark).

- Topographic map; Visual inspection (certification) of the proposed site

☐ Yes ☒ No

Within 200 horizontal feet of a spring or a fresh water well used for public or livestock consumption;

- NM Office of the State Engineer - iWATERS database search; Visual inspection (certification) of the proposed site

☐ Yes ☒ No

Temporary Pit using Low Chloride Drilling Fluid (maximum chloride content 15,000 mg/liter)

Within 100 feet of a continuously flowing watercourse, or any other significant watercourse or within 200 feet of any lakebed, sinkhole, or playa lake (measured from the ordinary high-water mark). (Applies to low chloride temporary pits.)

- Topographic map; Visual inspection (certification) of the proposed site

☐ Yes ☐ No

Within 300 feet from a occupied permanent residence, school, hospital, institution, or church in existence at the time of initial application.

- Visual inspection (certification) of the proposed site; Aerial photo; Satellite image

☐ Yes ☐ No

Within 200 horizontal feet of a spring or a private, domestic fresh water well used by less than five households for domestic or stock watering purposes, or 300feet of any other fresh water well or spring, in existence at the time of the initial application.

NM Office of the State Engineer - iWATERS database search; Visual inspection (certification) of the proposed site

☐ Yes ☐ No

Within 100 feet of a wetland.

- US Fish and Wildlife Wetland Identification map; Topographic map; Visual inspection (certification) of the proposed site

☐ Yes ☐ No

Temporary Pit Non-low chloride drilling fluid

Within 300 feet of a continuously flowing watercourse, or any other significant watercourse, or within 200 feet of any lakebed, sinkhole, or playa lake (measured from the ordinary high-water mark).

- Topographic map; Visual inspection (certification) of the proposed site

☐ Yes ☐ No

Within 300 feet from a permanent residence, school, hospital, institution, or church in existence at the time of initial application.

- Visual inspection (certification) of the proposed site; Aerial photo; Satellite image

☐ Yes ☐ No

Within 500 horizontal feet of a spring or a private, domestic fresh water well used by less than five households for domestic or stock watering purposes, or 1000 feet of any other fresh water well or spring, in the existence at the time of the initial application;

- NM Office of the State Engineer - iWATERS database search; Visual inspection (certification) of the proposed site

☐ Yes ☐ No

Within 300 feet of a wetland.

- US Fish and Wildlife Wetland Identification map; Topographic map; Visual inspection (certification) of the proposed site

☐ Yes ☐ No

Permanent Pit or Multi-Well Fluid Management Pit

Within 300 feet of a continuously flowing watercourse, or 200 feet of any other significant watercourse, or lakebed, sinkhole, or playa lake (measured from the ordinary high-water mark).

- Topographic map; Visual inspection (certification) of the proposed site

☐ Yes ☐ No

Within 1000 feet from a permanent residence, school, hospital, institution, or church in existence at the time of initial application.

- Visual inspection (certification) of the proposed site; Aerial photo; Satellite image

☐ Yes ☐ No

Within 500 horizontal feet of a spring or a fresh water well used for domestic or stock watering purposes, in existence at the time of initial application.

- NM Office of the State Engineer - iWATERS database search; Visual inspection (certification) of the proposed site

☐ Yes ☐ No

Within 500 feet of a wetland.

- US Fish and Wildlife Wetland Identification map; Topographic map; Visual inspection (certification) of the proposed site

☐ Yes ☐ No

10.

Temporary Pits, Emergency Pits, and Below-grade Tanks Permit Application Attachment Checklist: Subsection B of 19.15.17.9 NMAC

Instructions: Each of the following items must be attached to the application. Please indicate, by a check mark in the box, that the documents are attached.

- ☒ Hydrogeologic Report (Below-grade Tanks) - based upon the requirements of Paragraph (4) of Subsection B of 19.15.17.9 NMAC
- ☐ Hydrogeologic Data (Temporary and Emergency Pits) - based upon the requirements of Paragraph (2) of Subsection B of 19.15.17.9 NMAC
- ☐ Siting Criteria Compliance Demonstrations - based upon the appropriate requirements of 19.15.17.10 NMAC
- ☒ Design Plan - based upon the appropriate requirements of 19.15.17.11 NMAC
- ☒ Operating and Maintenance Plan - based upon the appropriate requirements of 19.15.17.12 NMAC
- ☒ Closure Plan (Please complete Boxes 14 through 18, if applicable) - based upon the appropriate requirements of Subsection C of 19.15.17.9 NMAC and 19.15.17.13 NMAC

☐ Previously Approved Design (attach copy of design) API Number: _____ or Permit Number: _____

11.

Multi-Well Fluid Management Pit Checklist: Subsection B of 19.15.17.9 NMAC

Instructions: Each of the following items must be attached to the application. Please indicate, by a check mark in the box, that the documents are attached.

- ☐ Design Plan - based upon the appropriate requirements of 19.15.17.11 NMAC
- ☐ Operating and Maintenance Plan - based upon the appropriate requirements of 19.15.17.12 NMAC
- ☐ A List of wells with approved application for permit to drill associated with the pit.
- ☐ Closure Plan (Please complete Boxes 14 through 18, if applicable) - based upon the appropriate requirements of Subsection C of 19.15.17.9 NMAC and 19.15.17.13 NMAC
- ☐ Hydrogeologic Data - based upon the requirements of Paragraph (4) of Subsection B of 19.15.17.9 NMAC
- ☐ Siting Criteria Compliance Demonstrations - based upon the appropriate requirements of 19.15.17.10 NMAC

☐ Previously Approved Design (attach copy of design) API Number: _____ or Permit Number: _____

12. **Permanent Pits Permit Application Checklist:** Subsection B of 19.15.17.9 NMAC

Instructions: Each of the following items must be attached to the application. Please indicate, by a check mark in the box, that the documents are attached.

- ☐ Hydrogeologic Report - based upon the requirements of Paragraph (1) of Subsection B of 19.15.17.9 NMAC
- ☐ Siting Criteria Compliance Demonstrations - based upon the appropriate requirements of 19.15.17.10 NMAC
- ☐ Climatological Factors Assessment
- ☐ Certified Engineering Design Plans - based upon the appropriate requirements of 19.15.17.11 NMAC
- ☐ Dike Protection and Structural Integrity Design - based upon the appropriate requirements of 19.15.17.11 NMAC
- ☐ Leak Detection Design - based upon the appropriate requirements of 19.15.17.11 NMAC
- ☐ Liner Specifications and Compatibility Assessment - based upon the appropriate requirements of 19.15.17.11 NMAC
- ☐ Quality Control/Quality Assurance Construction and Installation Plan
- ☐ Operating and Maintenance Plan - based upon the appropriate requirements of 19.15.17.12 NMAC
- ☐ Freeboard and Overtopping Prevention Plan - based upon the appropriate requirements of 19.15.17.11 NMAC
- ☐ Nuisance or Hazardous Odors, including H₂S, Prevention Plan
- ☐ Emergency Response Plan
- ☐ Oil Field Waste Stream Characterization
- ☐ Monitoring and Inspection Plan
- ☐ Erosion Control Plan
- ☐ Closure Plan - based upon the appropriate requirements of Subsection C of 19.15.17.9 NMAC and 19.15.17.13 NMAC

13. **Proposed Closure:** 19.15.17.13 NMAC

Instructions: Please complete the applicable boxes, Boxes 14 through 18, in regards to the proposed closure plan.

- Type: ☐ Drilling ☐ Workover ☐ Emergency ☐ Cavitation ☐ P&A ☐ Permanent Pit ☒ Below-grade Tank ☐ Multi-well Fluid Management Pit
☐ Alternative
- Proposed Closure Method: ☒ Waste Excavation and Removal
☐ Waste Removal (Closed-loop systems only)
☐ On-site Closure Method (Only for temporary pits and closed-loop systems)
☐ In-place Burial ☐ On-site Trench Burial
☐ Alternative Closure Method

14. **Waste Excavation and Removal Closure Plan Checklist:** (19.15.17.13 NMAC) **Instructions:** Each of the following items must be attached to the closure plan. Please indicate, by a check mark in the box, that the documents are attached.

- ☐ Protocols and Procedures - based upon the appropriate requirements of 19.15.17.13 NMAC
- ☐ Confirmation Sampling Plan (if applicable) - based upon the appropriate requirements of Subsection C of 19.15.17.13 NMAC
- ☐ Disposal Facility Name and Permit Number (for liquids, drilling fluids and drill cuttings)
- ☐ Soil Backfill and Cover Design Specifications - based upon the appropriate requirements of Subsection H of 19.15.17.13 NMAC
- ☐ Re-vegetation Plan - based upon the appropriate requirements of Subsection H of 19.15.17.13 NMAC
- ☐ Site Reclamation Plan - based upon the appropriate requirements of Subsection H of 19.15.17.13 NMAC

15. **Siting Criteria (regarding on-site closure methods only):** 19.15.17.10 NMAC

Instructions: Each siting criteria requires a demonstration of compliance in the closure plan. Recommendations of acceptable source material are provided below. Requests regarding changes to certain siting criteria require justifications and/or demonstrations of equivalency. Please refer to 19.15.17.10 NMAC for guidance.

Ground water is less than 25 feet below the bottom of the buried waste. - NM Office of the State Engineer - iWATERS database search; USGS; Data obtained from nearby wells	<input type="checkbox"/> Yes <input checked="" type="checkbox"/> No <input type="checkbox"/> NA
Ground water is between 25-50 feet below the bottom of the buried waste - NM Office of the State Engineer - iWATERS database search; USGS; Data obtained from nearby wells	<input type="checkbox"/> Yes <input checked="" type="checkbox"/> No <input type="checkbox"/> NA
Ground water is more than 100 feet below the bottom of the buried waste. - NM Office of the State Engineer - iWATERS database search; USGS; Data obtained from nearby wells	<input checked="" type="checkbox"/> Yes <input type="checkbox"/> No <input type="checkbox"/> NA
Within 100 feet of a continuously flowing watercourse, or 200 feet of any other significant watercourse, lakebed, sinkhole, or playa lake (measured from the ordinary high-water mark). - Topographic map; Visual inspection (certification) of the proposed site	<input type="checkbox"/> Yes <input checked="" type="checkbox"/> No
Within 300 feet from a permanent residence, school, hospital, institution, or church in existence at the time of initial application. - Visual inspection (certification) of the proposed site; Aerial photo; Satellite image	<input type="checkbox"/> Yes <input checked="" type="checkbox"/> No
Within 300 horizontal feet of a private, domestic fresh water well or spring used for domestic or stock watering purposes, in existence at the time of initial application. - NM Office of the State Engineer - iWATERS database; Visual inspection (certification) of the proposed site	<input type="checkbox"/> Yes <input checked="" type="checkbox"/> No
Written confirmation or verification from the municipality; Written approval obtained from the municipality	<input type="checkbox"/> Yes <input checked="" type="checkbox"/> No
Within 300 feet of a wetland. US Fish and Wildlife Wetland Identification map; Topographic map; Visual inspection (certification) of the proposed site	<input type="checkbox"/> Yes <input checked="" type="checkbox"/> No
Within incorporated municipal boundaries or within a defined municipal fresh water well field covered under a municipal ordinance	<input type="checkbox"/> Yes <input checked="" type="checkbox"/> No

adopted pursuant to NMSA 1978, Section 3-27-3, as amended.

- Written confirmation or verification from the municipality; Written approval obtained from the municipality

☐ Yes ☐ No

Within the area overlying a subsurface mine.

- Written confirmation or verification or map from the NM EMNRD-Mining and Mineral Division

☐ Yes ☐ No

Within an unstable area.

- Engineering measures incorporated into the design; NM Bureau of Geology & Mineral Resources; USGS; NM Geological Society; Topographic map

☐ Yes ☐ No

Within a 100-year floodplain.

- FEMA map

☐ Yes ☐ No

16.

On-Site Closure Plan Checklist: (19.15.17.13 NMAC) *Instructions: Each of the following items must be attached to the closure plan. Please indicate, by a check mark in the box, that the documents are attached.*

- ☐ Siting Criteria Compliance Demonstrations - based upon the appropriate requirements of 19.15.17.10 NMAC
- ☐ Proof of Surface Owner Notice - based upon the appropriate requirements of Subsection E of 19.15.17.13 NMAC
- ☐ Construction/Design Plan of Burial Trench (if applicable) based upon the appropriate requirements of Subsection K of 19.15.17.11 NMAC
- ☐ Construction/Design Plan of Temporary Pit (for in-place burial of a drying pad) - based upon the appropriate requirements of 19.15.17.11 NMAC
- ☐ Protocols and Procedures - based upon the appropriate requirements of 19.15.17.13 NMAC
- ☐ Confirmation Sampling Plan (if applicable) - based upon the appropriate requirements of 19.15.17.13 NMAC
- ☐ Waste Material Sampling Plan - based upon the appropriate requirements of 19.15.17.13 NMAC
- ☐ Disposal Facility Name and Permit Number (for liquids, drilling fluids and drill cuttings or in case on-site closure standards cannot be achieved)
- ☐ Soil Cover Design - based upon the appropriate requirements of Subsection H of 19.15.17.13 NMAC
- ☐ Re-vegetation Plan - based upon the appropriate requirements of Subsection H of 19.15.17.13 NMAC
- ☐ Site Reclamation Plan - based upon the appropriate requirements of Subsection H of 19.15.17.13 NMAC

17.

Operator Application Certification:

I hereby certify that the information submitted with this application is true, accurate and complete to the best of my knowledge and belief.

Name (Print): Vanessa Fields Title: Environmental Specialist

Signature: [Signature] Date: 1/30/2015

e-mail address: Vanessa.Fields@wpenergy.com Telephone: 505-333-1880

18.

OCD Approval: ☒ Permit Application (including closure plan) ☐ Closure Plan (only) ☐ OCD Conditions (see attachment)

OCD Representative Signature: [Signature] Approval Date: 2/6/15

Title: Environmental Spec OCD Permit Number: _____

19.

Closure Report (required within 60 days of closure completion): 19.15.17.13 NMAC

Instructions: Operators are required to obtain an approved closure plan prior to implementing any closure activities and submitting the closure report. The closure report is required to be submitted to the division within 60 days of the completion of the closure activities. Please do not complete this section of the form until an approved closure plan has been obtained and the closure activities have been completed.

☐ Closure Completion Date: _____

20.

Closure Method:

- ☐ Waste Excavation and Removal ☐ On-Site Closure Method ☐ Alternative Closure Method ☐ Waste Removal (Closed-loop systems only)
- ☐ If different from approved plan, please explain.

21.

Closure Report Attachment Checklist: *Instructions: Each of the following items must be attached to the closure report. Please indicate, by a check mark in the box, that the documents are attached.*

- ☐ Proof of Closure Notice (surface owner and division)
- ☐ Proof of Deed Notice (required for on-site closure for private land only)
- ☐ Plot Plan (for on-site closures and temporary pits)
- ☐ Confirmation Sampling Analytical Results (if applicable)
- ☐ Waste Material Sampling Analytical Results (required for on-site closure)
- ☐ Disposal Facility Name and Permit Number
- ☐ Soil Backfilling and Cover Installation
- ☐ Re-vegetation Application Rates and Seeding Technique
- ☐ Site Reclamation (Photo Documentation)

On-site Closure Location: Latitude _____ Longitude _____ NAD: ☐ 1927 ☐ 1983

Operator Closure Certification:

I hereby certify that the information and attachments submitted with this closure report is true, accurate and complete to the best of my knowledge and belief. I also certify that the closure complies with all applicable closure requirements and conditions specified in the approved closure plan.

Name (Print): _____ Title: _____

Signature: _____ Date: _____

e-mail address: _____ Telephone: _____

**Hydrogeological Report
WPX Energy Production, LLC
Chaco Trunk 3-2 CDP**

Regional Hydrological Context

Referenced Well Location:

The referenced well and pit is located on Bureau of Land Management land within Farmington Field Office (FFO) jurisdiction in San Juan County, New Mexico. This site is positioned in the northeastern portion of the San Juan Basin, an asymmetrical syncline that extends from northwestern New Mexico into southwestern Colorado (Carson National Forest FEIS, 2008). Elevation of the referenced well is approximately 6,837 feet MSL.

General Regional Groundwater Description:

As a portion of the San Juan Basin, the FFO region is underlain by sandstone aquifers of the Colorado Plateau. The primary aquifer of potential concern at this location is the Uinta-Animas Aquifer, composed primarily of Lower Tertiary rocks in the San Juan Basin. The aquifer consists of the San Jose Formation; the underlying Animas formation and its lateral equivalent, the Nacimiento formation; and the Ojo Alamo Sandstone. The thickness of the Uinta-Animas aquifer generally increases toward the central part of the basin. In this region, the maximum thickness of the aquifer is approximately 3500 feet (USGS, 2001). This aquifer contains fresh to moderately saline water.

Groundwater generally flows toward the San Juan River and its tributaries, where it becomes alluvial groundwater or is discharged to stream flow. Additional information regarding the hydrogeologic setting can be found in the provided references.

Site Specific Information:

Surface Hydrology:

The BGT is located on the broad, flat floor of Escrito Canyon with a gentle slope to the northwest.

1st Water Bearing Formation:

San Jose, Tertiary

Formation Thickness:

Approximately 1,900 ft.

Underlying Formation:

Nacimiento, Tertiary

Depth to Groundwater:

Depth to groundwater is estimated at 84 feet below bottom of BGT. Within a one-mile radius of this location, there is a test well on the Chaco 2206-02H #225H with water depth at 111' (see Siting Criteria Map I for details).

References:

Allen, Erin. Undated. Colorado Plateau Aquifers.

<http://academic.emporio.edu/schulmem/hydro/TERM%20PROJECTS/2007/Allen/Aquifer.html>.

New Mexico Energy, Minerals and Natural Resources Department, Division of Mining and Minerals. Database. 2010. Internet accessed January 2010.

New Mexico Office of the State Engineer. 2013. iWaters database. Internet accessed July 2013.

New Mexico WQCC. 2005. State of New Mexico Water Quality Act and the Water Control Commission Regulations.

United States Department of Agriculture, Forest Service. 2008. Final Environmental Impact Statement for Surface Management of Gas Leasing and Development. Jicarilla Ranger District, Carson National Forest, Rio Arriba County, New Mexico.

United States Department of the Interior. Bureau of Land Management. 2003. Final Farmington Resource Management Plan and Final Environmental Impact Statement. Farmington Field Office, Farmington, New Mexico.

United States Geological Survey. 2001. Ground Water Atlas of the United States: Arizona, Colorado, New Mexico and Utah. USGS Publication HA 730-C;

MO-TE DRILLING, INC.

DAY Thursday

DRILLER <u>Josh</u>	LEFT TOWN	ARRIVED FIELD
HELPER <u>Dustin</u>	LEFT FIELD	ARRIVED TOWN
HELPER	TOTAL FOOTAGE TODAY	

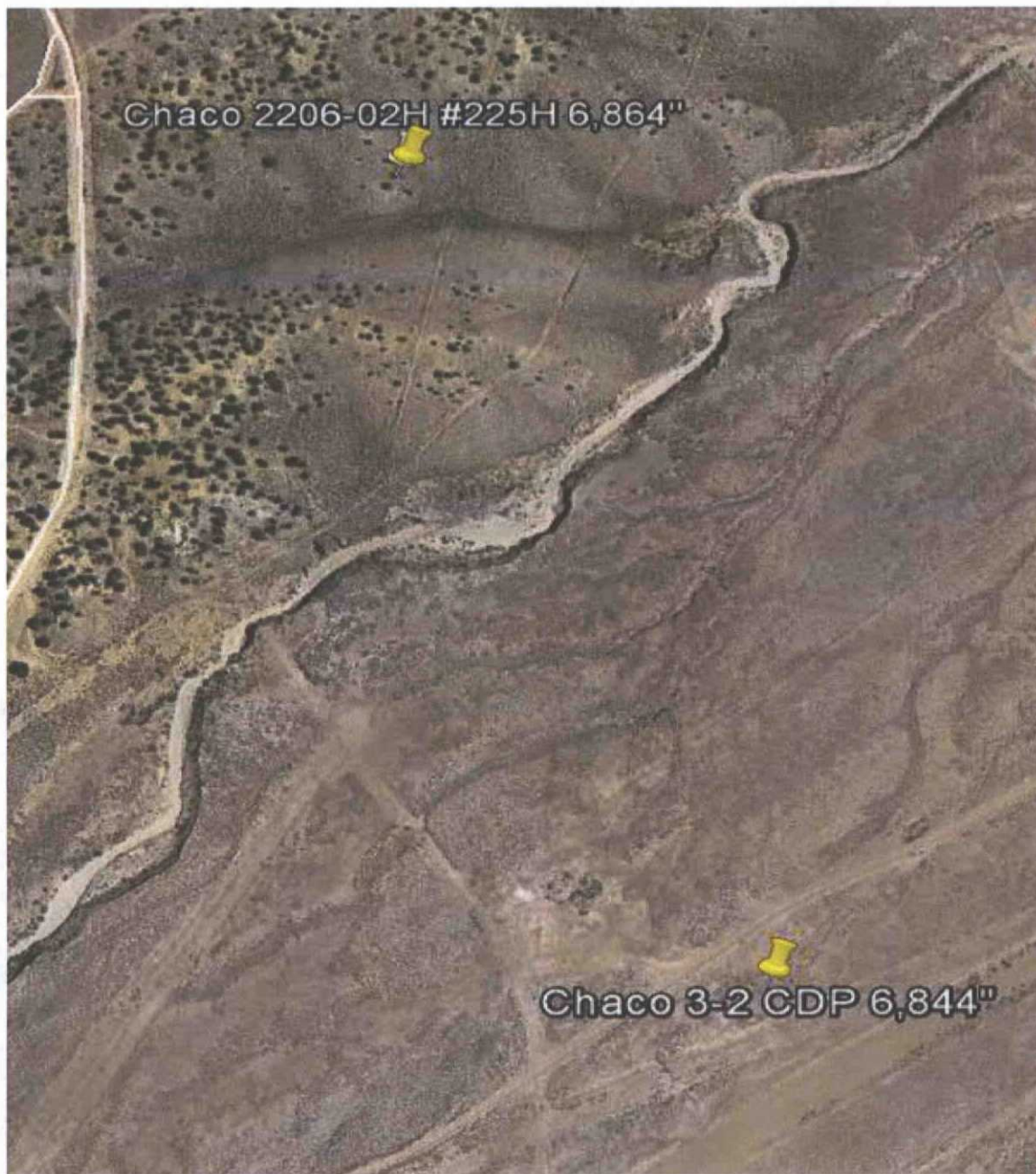
RIG NO. 208 DATE 5-9-13 CLIENT WPX

BEGIN WORK ON HOLE NO. Chaco 2206-02H AT _____ FEET

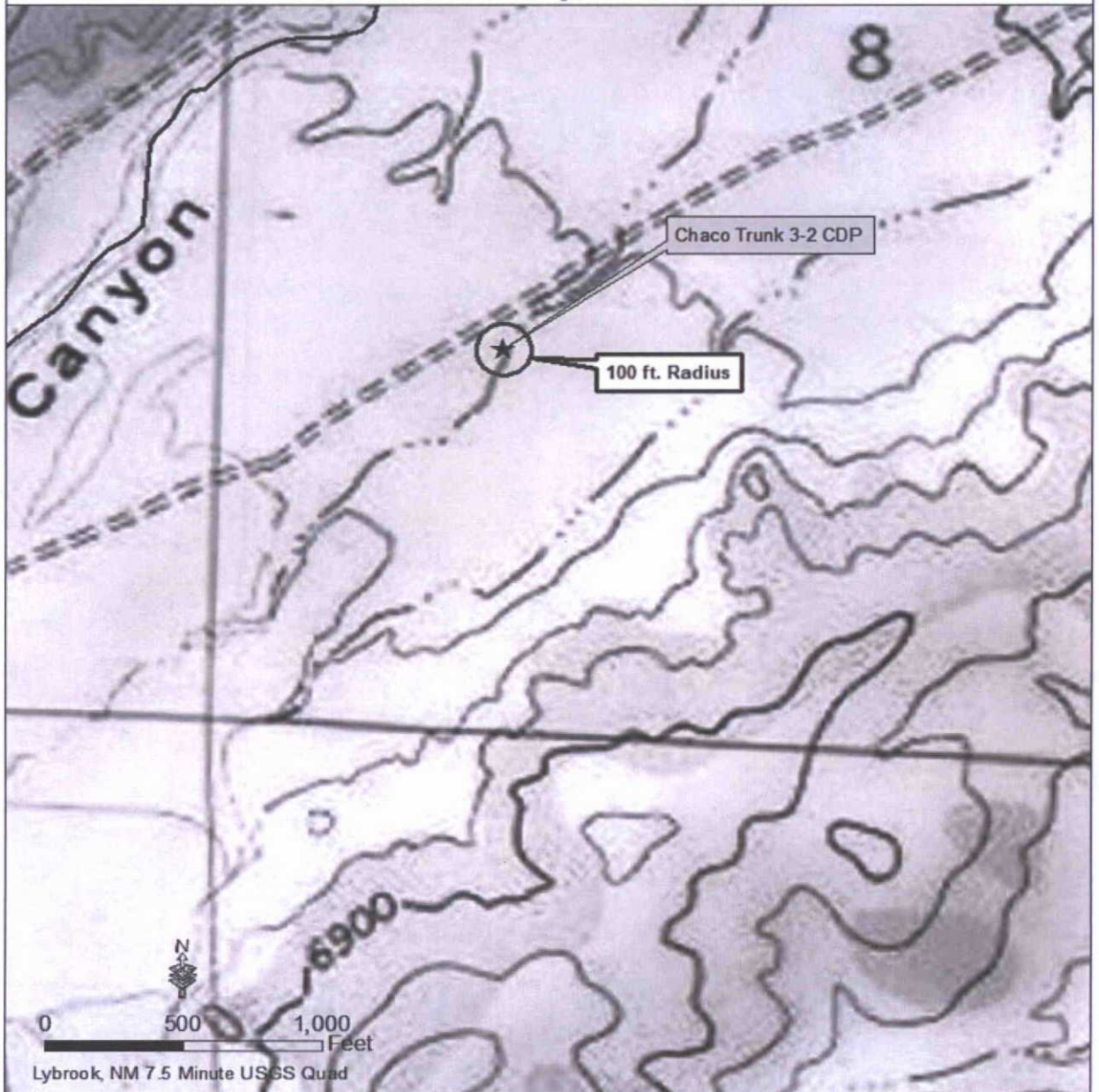
BEGIN WORK ON HOLE NO. #225 H AT _____ FEET

TIME		ACTIVITY
FROM	TO	
		Big up DRill 6 $\frac{1}{4}$ " hole 0-65
		TDH. wait 1 Hour check for
		water. NO water!
		77H DRill 6 $\frac{1}{4}$ " Hole 65-115
		TDH. wait 1 Hour check
		for water. Hole was wet
		at 115'. cover Hole.
		(Tag Water @ 111')
		Rig down

Siting Criteria Map I'
Topographic Features
WPX Energy Production, LLC
Chaco Trunk 3-2 CDP
T23N, R06W, Section 08 NMPM
Rio Arriba Country, New Mexico



Siting Criteria Map II
Topographic Features
WPX Energy Production, LLC
Chaco Trunk 3-2 CDP
T23N, R06W, Section 08 NMPM
Rio Arriba Country, New Mexico



Siting Criteria Compliance Demonstrations:

- The Chaco Trunk 3-2 CDP is not located in an unstable area.
- The site is not within 100 feet of any reported riparian areas or wetlands (see attached USFWS wetland map); within 300 feet of any private, domestic fresh water well or spring; or within 300 feet of any other fresh water well or spring (see Siting Criteria Map I)
- The BGT will not be within 1000'ft any incorporated municipal boundaries or defined municipal freshwater well field covered under a municipal ordinance adopted pursuant to NMSA 1978, Section 3-27-3, as amended.
- Ground to depth water at the Chaco Trunk 3-2 CDP is greater than 50 feet.

WPX Energy requests the following variances:

1. The BGT will be protected from run on by being installed upon a top felt rock shield with a overlay of 30 mil rubber liner attached to the sidewalls of the inside of the containment berm. The 30 mill rubber liner will provide equal and/or better protection in the prevention of contamination of fresh water and protecting public health and the environment.
(See attached photo))
2. A 42 inch tall, 12 gauge coated metal steel fence will be constructed around the BGT to protect livestock/wildlife as specified by the federal Surface Management Agency or, if not federal land/minerals; which will provide equal and/or better protection of a fence while preventing contamination of fresh water, protecting public health and the environment.
(See attached photo)
3. If the surface owner is of public entity (i.e.: BLM) WPX Energy will notify by email the intent to close the BGT in place of a certified mail letter. WPX Energy will request a read receipt of the email which will be equal and/ or equivalent notification as certified mail.
4. WPX Energy respectfully requests the following variance for the Chaco 3-2 CDP Below Grade Tank installation of 96 foot setback rather than the 100 foot requirement as identified in rule 19.15.17.10.A.8(a).
5. The BGT will be protected from runoff by the entire containment area of the BGT will be inlayed with a 30 mill rubber liner which will provide better protection in the prevention of contamination of fresh water and protection the public health and environment.
6. The BGT will be only manually dumped by a person when the well goes to sales. At no time will the BGT be automatically dumped without a person being present. This action will prevent overflow and provide better protection of contamination of fresh water, protecting the public health and the environment.
7. Following removal of the BGT WPX will follow the most stringent Closure Standard as referenced below. This action will provide-better protection of contamination of fresh water, protecting the public health and the environment.

Thank you,

Vanessa Fields

Environmental Specialist

CC: / Environmental File

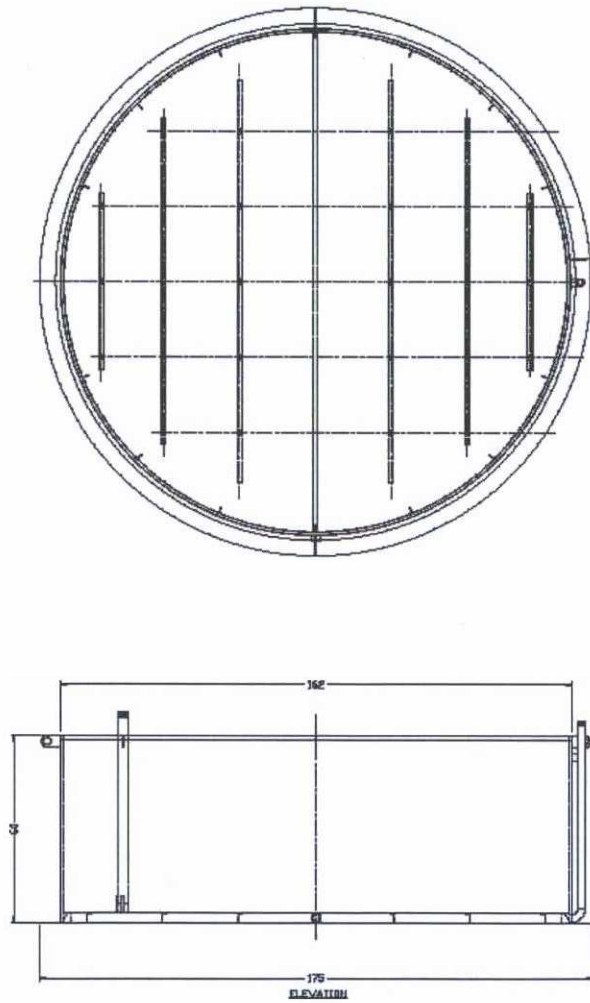
WPX Energy Co., LLC
San Juan Basin: New Mexico Assets
Production BGT: Buried Double-Wall Steel Tank
Design and Construction Plan

In accordance with Rule 19.15.17 NMAC, the following plan describes the general design and construction (D&C) of Below Grade Tanks (BGT) using buried double-wall steel tanks on WPX Energy Co, LLC (WPX) locations in the San Juan Basin of New Mexico. For those BGT which do not conform to this standard plan, a separate well-specific D&C plan will be developed and utilized.

General Plan Requirements:

1. WPX will post a well sign in accordance with the federal Surface Management Agency and rule NMAC 19.15.17.11.C
2. As a variance a 42 inch tall, 12 gauge coated metal steel "Fence" will be constructed around the BGT to protect livestock/wildlife as specified by the federal Surface Management Agency or, if not federal land/minerals, NMOCD rule 17 requirements. See Attached Design/photo.
3. WPX Energy respectfully requests the following variance for the Chaco 3-2 CDP Below Grade Tank installation of 96 foot set back rather than the 100 foot requirement as identified in rule 19.15.17.10.A.8(a).
4. The BGT will be protected from run on by being installed upon a top felt rock shield with a overlay of 30 mil rubber liner attached to the sidewalls of the inside of the containment berm. The 30 mill rubber liner will provide equal and/or better protection in the prevention of contamination of fresh water and protecting public health and the environment.
5. The BGT will be protected from runoff by the entire containment area of the BGT will be inlayed with a 30 mill rubber liner which will provide better protection in the prevention of contamination of fresh water and protection the public health and environment.
6. The BGT will be only manually dumped by a person when the well goes to sales. At no time will the BGT be automatically dumped without a person being present. This action will prevent overflow and provide better protection of contamination of fresh water, protecting the public health and the environment.
7. Following removal of the BGT WPX will follow the most stringent Closure Standard as referenced below. This action will provide better protection of contamination of fresh water, protecting the public health and the environment.
8. The buried BGT will be constructed of steel with double-walls and double-bottom, welded following appropriate API and industry codes, coated with an epoxy based paint, covered with a steel #9 mesh screen, and equipped with an EFM to monitor high liquid levels and automatically shut off liquid discharges. A solid riser pipe will be installed between the interstitial space of the double-walls to allow monthly inspection to determine tank integrity.

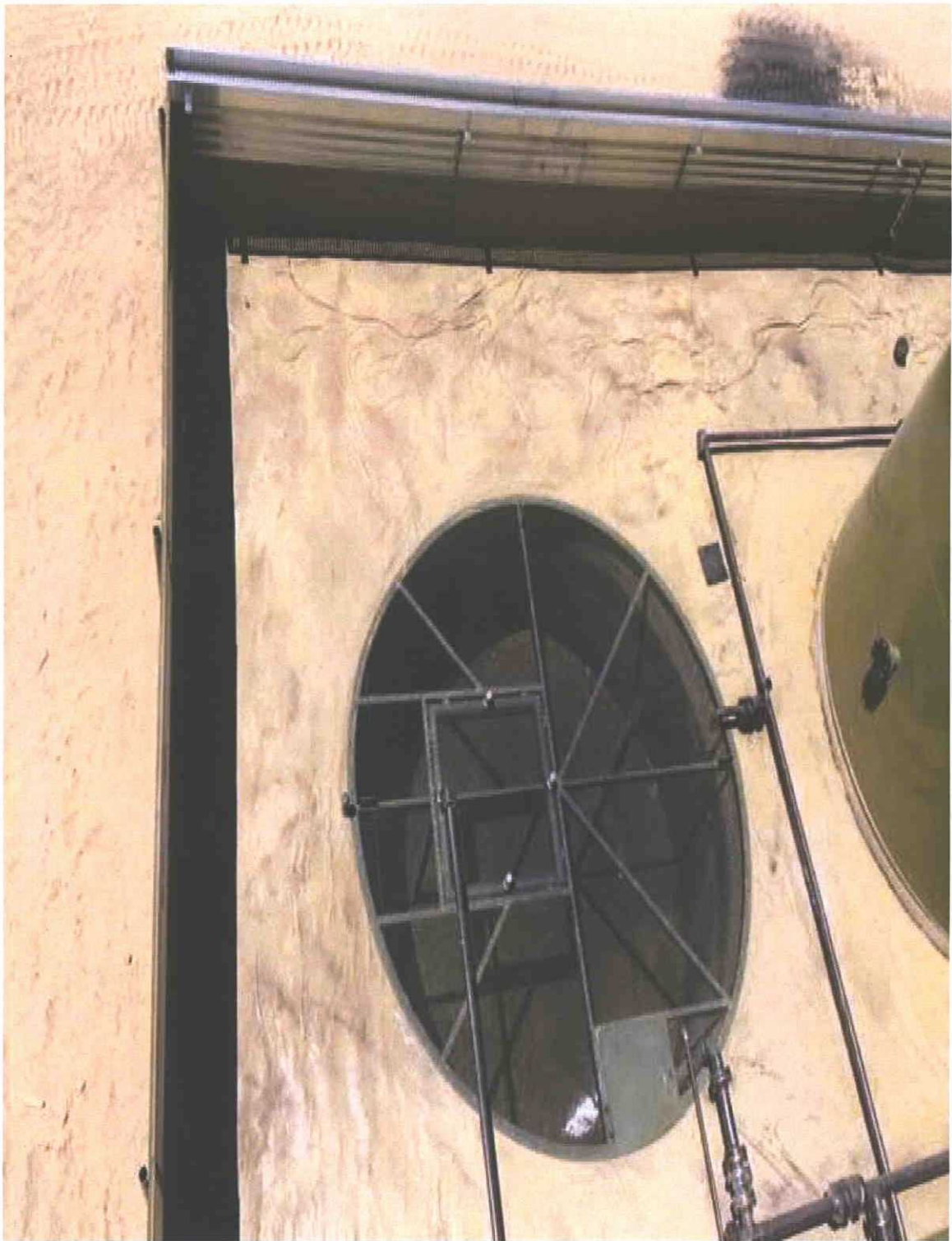
9. WPX will design and construct a BGT to contain liquids associated with the dehydration and compression of produced natural gas, which will be resistant to ultra violet light and the contents of the tank to prevent contamination of fresh water resources and protect public health and the environment.
10. The BGT foundation will be level and free of rocks, debris, sharp edges or irregularities and have a firm compacted bottom and sidewalls that are stable for the soil conditions.
11. The BGT will be protected from run on by being installed within the impervious secondary containment provided by the AST tanks on location. See attached Design (Same as Fence)
12. The BGT will be placed in the excavation such that there is 30 mil rubber liner overlay between the surrounding soils and the tank top see attached design.
13. A solid riser pipe will be installed to allow withdrawal of liquids by suction. The riser will draw from the bottom of the BGT, capped when not in use and sloped to the BGT to allow drainage of liquids not collected during withdrawal operations.

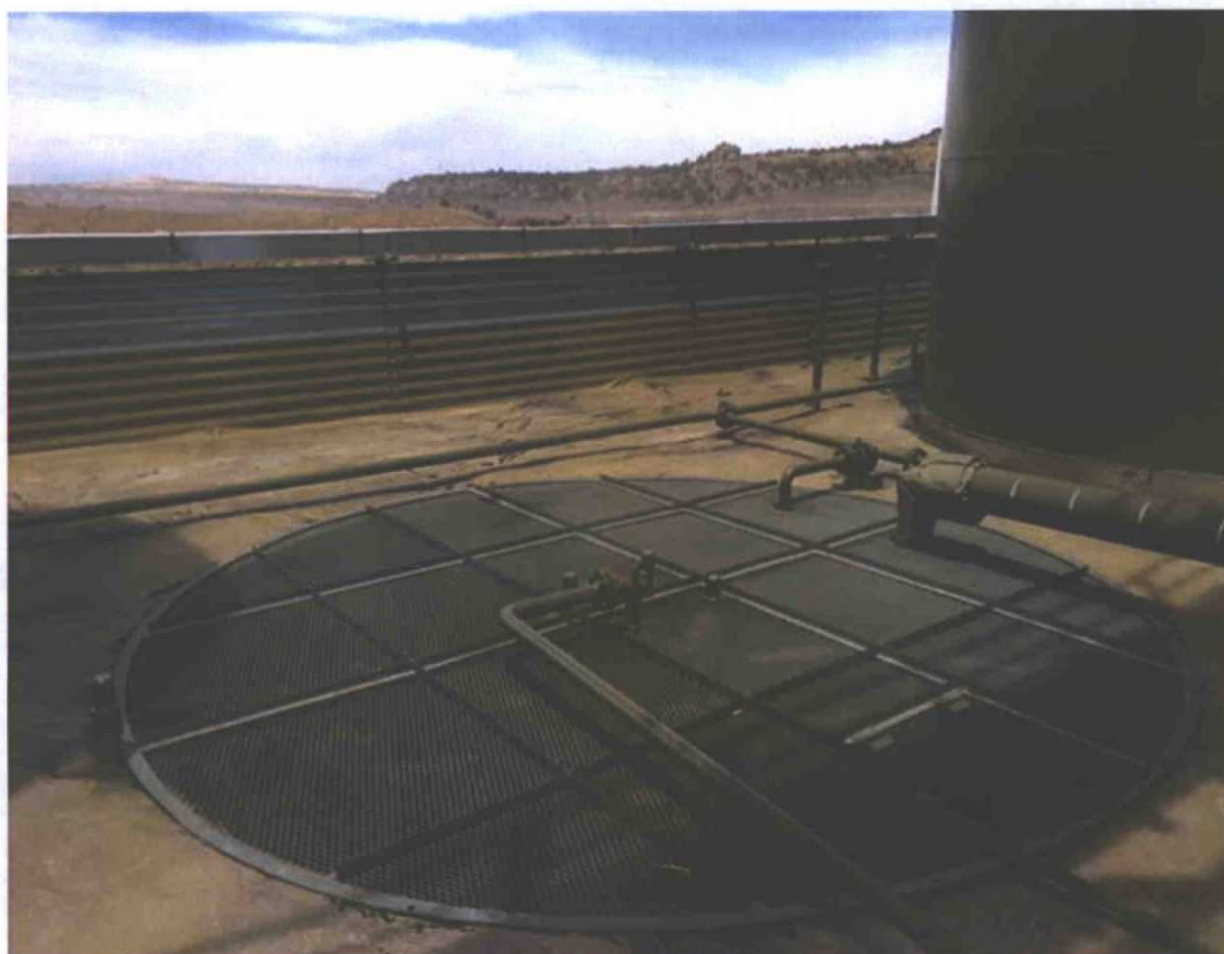


NOTES
 1. INTERIOR AND EXTERIOR TO BE VINYL WRICH PREPARED
 AND COATED WITH GREEN GILD-PLATE EPOXY.
 2. AFTER WELDING, TEST SPACE BETWEEN JOINTS 1/2"
 NO MORE THAN 3 PSI AIR.

WEIGHT 6,470 LBS.

		<small>ALL INFORMATION CONTAINED IN THIS CATALOG, WHETHER PRINTED OR FORWARDED, IS UP TO A PROPRIETARY INVENTION AND IS THE SOLE PROPERTY OF PESCO. NO REPRODUCTION OR ANY OTHER USE WITHOUT THE EXPRESS WRITTEN PERMISSION OF PESCO, INC. IS STRICTLY PROHIBITED.</small>	
		<small>PIT TANK, STEEL, BOTTOM, STEEL WALL 120 DIA. 12'-0" DIA. 11'-0" HIGH</small>	
WILLIAMS COMPANY NUMBER 101 ALL WORK IN PROJECT NUMBER 10 DATE	1/16 1/16 1/16 1/16 1/16	1/16 1/16 1/16 1/16 1/16	1/16 1/16 1/16 1/16 1/16
DATE PROJECT NUMBER 101 DATE		1/16 1/16 1/16 1/16 1/16	





WPX Energy Co., LLC
San Juan Basin: New Mexico Assets
Production BGT: Buried Double-Wall Steel Tank
Operations and Maintenance Plan

In accordance with Rule 19.15.17 NMAC, the following plan describes the general operations and maintenance (O&M) of production Below Grade Tanks (BGT) on WPX Energy Co, LLC (WPX) locations in the San Juan Basin of New Mexico. For those BGT which do not conform to this standard O&M plan, a separate well specific O&M plan will be developed and utilized.

1. WPX will inspect the BGT monthly for leaks and damage. Electronic copies of the inspections will be kept at the WPX San Juan Basin office for a minimum of five years following completion. Copies of the inspections will be available to NMOCD upon request.
2. Any oil or hydrocarbon collecting on the BGT will be removed. Saleable condensate will be returned to the sales tank. Slop oil from compression will be recycled with Safety Kleen, Farmington, NM or Hydropure, Aztec, NM (No Permit Required).
3. WPX will only allow produced liquids meeting the RCRA exemption for O&G wastes to be stored in the BGT. WPX will not discharge or store any hazardous waste as defined under RCRA 40CFR 261 and 19.15.2.7.H.3 NMAC in any BGT.
4. WPX shall maintain sufficient freeboard for to prevent overflow. Discharges to the BGT will be shutoff automatically if the high-level alarm is triggered from the EFM or manually if the EFM is not functional.
5. The Steel fencing around the perimeter of the BGT shall be maintained as protection from run-on.
6. Produced water will be disposed by evaporation or transport any of the following NMOCD approved facilities depending on the well location: Basin Disposal, Inc in Bloomfield, New Mexico (Permit # NM-01-005), WPX Energy Rosa SWD#1 (Permit # SWD-916), WPX Energy Rosa #94 (Permit # SWD-758), Burlington Resources Jillson SWD#1 (Permit #R10168A), or other NMOCD approved water disposal facilities.
7. If the tank integrity is compromised:
 - a. All discharges will be shut off to the BGT.
 - b. All liquids will be removed as soon as possible but no later than 24 hours after discovery.
 - c. WPX will notify and report to NMOCD in accordance to 19.15.29 NMAC and all other applicable agency's as require.

WPX Energy Co., LLC
San Juan Basin: New Mexico Assets
Production BGT: Buried Double-Wall Steel Tank
Closure Plan

In accordance with Rule 19.15.17.13 NMAC, the following plan describes the general closure requirements of below-grade tanks (BGT) on WPX Energy Co, LLC (WPX) locations in the San Juan Basin of New Mexico. This is WPX's standard closure procedure for all BGTs regulated under Rule 19.15.17 NMAC and operated by WPX. For those closures which do not conform to this standard closure plan, a separate BGT specific closure plan will be developed and utilized.

Closure Conditions and Timing for BGT:

- Within 60 days of cessation of operation WPX will:
 - Remove all liquids and sludge and dispose in a division approved manner
- Within 72 Hrs or 1 week prior to closure WPX will:
 - Give notice to Surface owners by certified mail. For public entities by email as specified on the variance page.
 - Give notice to District Division verbally and in writing/email
- Within 6 months of cessation of operation WPX will:
 - Remove BGT and dispose, recycle, reuse, or reclaim in a division approved manner
 - Remove unused onsite equipment associated with the BGT
- Within 60 Days of Closure WPX will:
 - Send the District Division a Closure Report per 19.15.17.13.F

General Plan Requirements:

1. Prior to initiating any BGT Closure except in the case of an emergency, WPX will notify the surface owner of the intent to close the BGT by certified mail no later than 72 hours or 1 week before closure and a copy of this notification will be included in the closure report. In the case of an emergency, the surface owner of record will be notified as soon as practical.
2. Notice of Closure will be given to the Aztec District office between 72 hours and one week of the scheduled closure via email or phone. The notification of closure will include the following:
 - a. Operators Name (WPX)
 - b. Well Name and API Number
 - c. Location (USTR)
3. All liquids will be removed from the BGT following cessation of operation. Produced water will be disposed at one of the following NMOCD approved facilities depending on the proximity of the BGT site: Rosa Unit SWD #1 (Order: SWD-916, API: 30-039-27055), Rosa Unit #94 (Order: SWD-3RP-1003-0, API: 30-039-23035), Jillson Fed. SWD #001 (Order: R10168/R10168A, API: 30-039-25465), Middle Mesa SWD #001 (Order: SWD-350-0, API: 30-045-27004) and/or Basin Disposal (Permit: NM-01-0005).
4. Solids and sludge's will be shoveled and /or vacuumed out for disposal at Envirotech (Permit Number NM-01-0011).

5. WPX will obtain prior approval from NMOCD to dispose, recycle, reuse, or reclaim the BGT and provide documentation of the disposition of the BGT in the closure report. Steel materials will be recycled or reused as approved by the Division. Fiberglass tanks will be empty, cut up or shredded, and EPA cleaned for disposal as solid waste. Liners materials will be cleaned without soils or contaminated material for disposal as solid waste. Fiberglass tanks and liner materials will meet the conditions of 19.15.35 NMAC. Disposal will be at a licensed disposal facility, presently San Juan Regional Landfill operated by Waste Management under NMED Permit SWM-052426.
6. Any equipment associated with the BGT that is no longer required for some other purpose, following the closure will be removed from the location.
7. Following removal of the tank and any liner material, WPX will test the soils beneath the BGT as follows:
 - a. At a minimum, a five-point composite sample will be taken to include any obvious stained or wet soils or any other evidence of contamination.
 - b. The laboratory sample shall be analyzed for the constituents listed in Table I of 19.15.17.13



Depth below bottom of pit to groundwater less than 10,000 mg/l TDS	Constituent	Method	Limit
≤50 feet	Chloride	EPA 300.0	600 mg/kg
	TPH	EPA SW-846 Method 418.1	100 mg/kg
	BTEX	EPA SE-846 Method 8021B or 8015M	50 mg/kg
	Benzene	EPA SW-846 Method 8021B or 8015M	10 mg/kg

Depth below bottom of pit to groundwater less than 10,000 mg/l TDS	Constituent	Method	Limit
51 feet-100 feet	Chloride	EPA 300.0	10,000 mg/kg
	TPH	EPA SW-846 Method 418.1	2,500 mg/kg
	GRO+DRO	EPA SW-846 Method 8015M	1,000 mg/kg
	BTEX	EPA SE-846 Method 8021B or 8015M	50 mg/kg
	Benzene	EPA SW-846 Method 8021B or 8015M	10 mg/kg

Depth below bottom of pit to groundwater less than 10,000 mg/1 TDS	Constituent	Method	Limit
>100 feet	Chloride	EPA 300.0	20,000 mg/kg
	TPH	EPA SW-846 Method 418.1	2,500 mg/kg
	GRO+DRO	EPA SW-846 Method 8015M	1,000 mg/kg
	BTEX	EPA SE-846 Method 8021B or 8015M	50 mg/kg
	Benzene	EPA SW-846 Method 8021B or 8015M	10 mg/kg

(1) Or other test methods approved by the division

(2) Numerical limits or natural background level, whichever is greater
(19.15.17.13 NMAC-Ro, 19.15.17.13 NMAC 3/28/2013)

8. If the Division and/or WPX determine there is a release, WPX will comply with 19.15.17.13.C.3b
9. Upon completion of the tank removal, the excavation will be backfilled with non-waste earthen material compacted and covered with a minimum of one foot of top soil or background thickness whichever is greater and to existing grade. The surface will be re-contoured to match the native grade and prevent ponding.

For those portions of the former BGT area no longer required for production activities, WPX will seed the disturbed areas the first favorable growing season after the BGT is covered. Seeding will be accomplished via drilling on the contour whenever practical, or by other Division-approved methods. WPX will notify the Division when reclamation and re-vegetation is complete.

Reclamation of the BGT shall be considered complete when:

- a. Vegetative cover reflects a life form ratio of +/- 50% of pre disturbance levels
- b. Total percent plant cover of at least 70% of pre-disturbance levels
(Excluding noxious weeds)

OR

- c. Pursuant to 19.15.17.13.H.5d WPX will comply with obligations imposed by other applicable federal or tribal agencies in which their re-vegetation and reclamation requirements provide equal or better protection of fresh water, human health and the environment.

10. For those portions of the former BGT area required for production activities, reseedling will be done at well abandonment, and following the procedure noted above.

Closure Report:

All closure activities will include proper documentation and will be submitted to OCD within 60 days of the BGT closure on a Closure Report using Division Form C-144. The Report will include the following:

- Proof of Closure Notice (surface owner & NMOCD)
- Backfilling & Cover Installation
- Confirmation Sampling Analytical Results
- Disposal Facility Name(s) and Permit Number(s)
- Application Rate & Seeding techniques
- Photo Documentation of Reclamation