

11/23/2016	SUSPENSE	MAN	11/28/2016	LOGGED IN	PLK	MAN 163338654
------------	----------	-----	------------	-----------	-----	---------------

ABOVE THIS LINE FOR DIVISION USE ONLY

NEW MEXICO OIL CONSERVATION DIVISION
 - Engineering Bureau -
 1220 South St. Francis Drive, Santa Fe, NM 87505



ADMINISTRATIVE APPLICATION CHECKLIST

THIS CHECKLIST IS MANDATORY FOR ALL ADMINISTRATIVE APPLICATIONS FOR EXCEPTIONS TO DIVISION RULES AND REGULATIONS WHICH REQUIRE PROCESSING AT THE DIVISION LEVEL IN SANTA FE

Application Acronyms:

[NSL-Non-Standard Location] [NSP-Non-Standard Proration Unit] [SD-Simultaneous Dedication]
 [DHC-Downhole Commingling] [CTB-Lease Commingling] [PLC-Pool/Lease Commingling]
 [PC-Pool Commingling] [OLS - Off-Lease Storage] [OLM-Off-Lease Measurement]
 [WFX-Waterflood Expansion] [PMX-Pressure Maintenance Expansion]
 [SWD-Salt Water Disposal] [IPI-Injection Pressure Increase]
 [EOR-Qualified Enhanced Oil Recovery Certification] [PPR-Positive Production Response]

[1] **TYPE OF APPLICATION** - Check Those Which Apply for [A]

- [A] Location - Spacing Unit - Simultaneous Dedication
☐ NSL ☐ NSP ☐ SD

Check One Only for [B] or [C]

- [B] Commingling - Storage - Measurement
☐ DHC ☒ CTB ☐ PLC ☐ PC ☒ OLS ☒ OLM

- [C] Injection - Disposal - Pressure Increase - Enhanced Oil Recovery
☐ WFX ☐ PMX ☐ SWD ☐ IPI ☐ EOR ☐ PPR

- [D] Other: Specify _____

[2] **NOTIFICATION REQUIRED TO:** - Check Those Which Apply, or Does Not Apply

- [A] ☒ Working, Royalty or Overriding Royalty Interest Owners

- [B] ☐ Offset Operators, Leaseholders or Surface Owner

- [C] ☐ Application is One Which Requires Published Legal Notice

- [D] ☐ Notification and/or Concurrent Approval by BLM or SLO
 U.S. Bureau of Land Management - Commissioner of Public Lands, State Land Office

- [E] ☒ For all of the above, Proof of Notification or Publication is Attached, and/or,

- [F] ☐ Waivers are Attached

[3] **SUBMIT ACCURATE AND COMPLETE INFORMATION REQUIRED TO PROCESS THE TYPE OF APPLICATION INDICATED ABOVE.**

[4] **CERTIFICATION:** I hereby certify that the information submitted with this application for administrative approval is **accurate** and **complete** to the best of my knowledge. I also understand that **no action** will be taken on this application until the required information and notifications are submitted to the Division.

Note: Statement must be completed by an individual with managerial and/or supervisory capacity.

Jordan L. Kessler
 Print or Type Name

Signature

Attorney

Title

jlkessler@hollandhart.com

e-mail Address

Date

11/23/16

- PTC CTB 802
 - water production
 Company
 229137

PO4
 - Culebra
 BL400
 WOLFcamp
 SOUTH (GAS)
 75750
 - PACE
 CULSING
 WOLFcamp
 (GAS)
 96712

Well
 - Jimmy Kone
 05245285RB#204
 30-05-43475

- Jimmy Kone 05
 245285RB#204
 30-05-43367

- Jimmy Kone
 05245285RB
 42284
 30-05-43582

November 23, 2016

VIA HAND DELIVERY

David Catanach
Oil Conservation Division
New Mexico Department of Energy,
Minerals and Natural Resources
1220 South Saint Francis Drive
Santa Fe, New Mexico 87505

Re: Application of Matador Production Company for administrative approval for off-lease measurement and approval to surface commingle (lease commingle) oil and gas production from the spacing units comprised of the N/2 of Section 5 and the S/2 of Section 5, Township 24 South, Range 28 East, NMPM, Eddy County, New Mexico.

Dear Mr. Catanach,

Matador Production Company (OGRID No. 228937) seeks administrative approval for off-lease measurement and approval to surface lease commingle oil and gas production from the Culebra Bluff; Wolfcamp, South (Gas) Pool (Pool Code 75750) *from all existing and future wells and existing and future leases* drilled in the following areas of diverse ownership in Township 24 South, Range 28 East, NMPM, in Eddy County, New Mexico:

(a) The 320-acre standard spacing unit comprised of the N/2 of Section 5. This spacing unit is currently dedicated to the Jimmy Kone 05-24S-28E RB No. 226H Well, (API No. pending). This well will produce from the Culebra Bluff; Wolfcamp, South (Gas) Pool (Pool Code 75750). *↑ well*

(b) The 320-acre standard spacing unit comprised of the S/2 of Section 5. This spacing unit is currently dedicated to the Jimmy Kone 05-24S-28E RB No. 203H Well (API No. 30-015-43475), the Jimmy Kone 05-24S-28E RB No. 208H Well (API No. 30-015-43389), the Jimmy Kone 05-24S-28E RB No. 223H Well (API No. Pending), and the Jimmy Kone 05-24S-28E RB No. 228H Well (API No. 30-015-43542). These four wells all either produce or will produce from the Culebra Bluff; Wolfcamp, South (Gas) Pool (Pool Code 75750).

Pursuant to NMAC 19.15.12.7, approved spacing units with diverse ownership are considered separate leases for surface commingling purposes. Matador seeks authority to surface commingle production according to the provisions of NMAC 19.15.12.10.C *from all existing and*

HOLLAND & HART^{LLP}



future wells in these separate areas of ~~diverse~~ ownership at a surface facility (the "Facility") located in the NE/4 SE/4 (Unit I) of Section 5. As illustrated on Exhibit 1, there are two Surface Pads (the "Surface Pads"), located in the NE/4 SE/4 (Unit I) of Section 5 and the SW/4 SW/4 of Section 6 (Unit M). The wellhead locations are therefore not directly adjacent to the nearby Facility. Accordingly, out of an abundance of caution and pursuant to NMAC 19.15.23.9 and 19.15.12.9.B, Matador seeks permission for Off-Lease Measurement. Pursuant to 19.15.12.10(C)(4)(g), Matador also seeks authority to commingle production into the Black River South Trunk Line from future leases with notice provided only to interest owners within future leases. Prior to commingling, gas production from each well will be separately metered using individual test separators with calibrated orifice meters that are manufactured to AGA specifications. Oil production from each well will also be separately metered using a turbine meter.

Exhibit 1 is a land plat showing Matador's current development and gathering system in the subject area. The plat identifies the wellbores, the spacing units, and the common surface facility located in the NE/4 SE/4 (Unit I) of Section 5. All lands in the Section 5 are fee lands.

Exhibit 2 is a completed Application for Surface Commingling (Diverse Ownership) and Off-Lease Measurement Form C-107-B with attachments.

Exhibit 3 is an in depth engineering explanation of Matador's commingling process.

Exhibit 4 is a C-102 for each of the current wells drilled and planned within the existing spacing units.

Exhibit 5 is a diagram of the surface facilities.

Exhibit 6 is a list of the working interest, royalty, and overriding royalty interests affected by this request for approval to off-lease measure and surface commingle oil and gas production. A copy of this application with all attachments has been sent by certified mail to all affected parties advising them that if they have an objection they must file it in writing with the division within 20 days from the date the division receives Matador's application.

Exhibit 7 is a notice of publication directed to unlocatable parties.

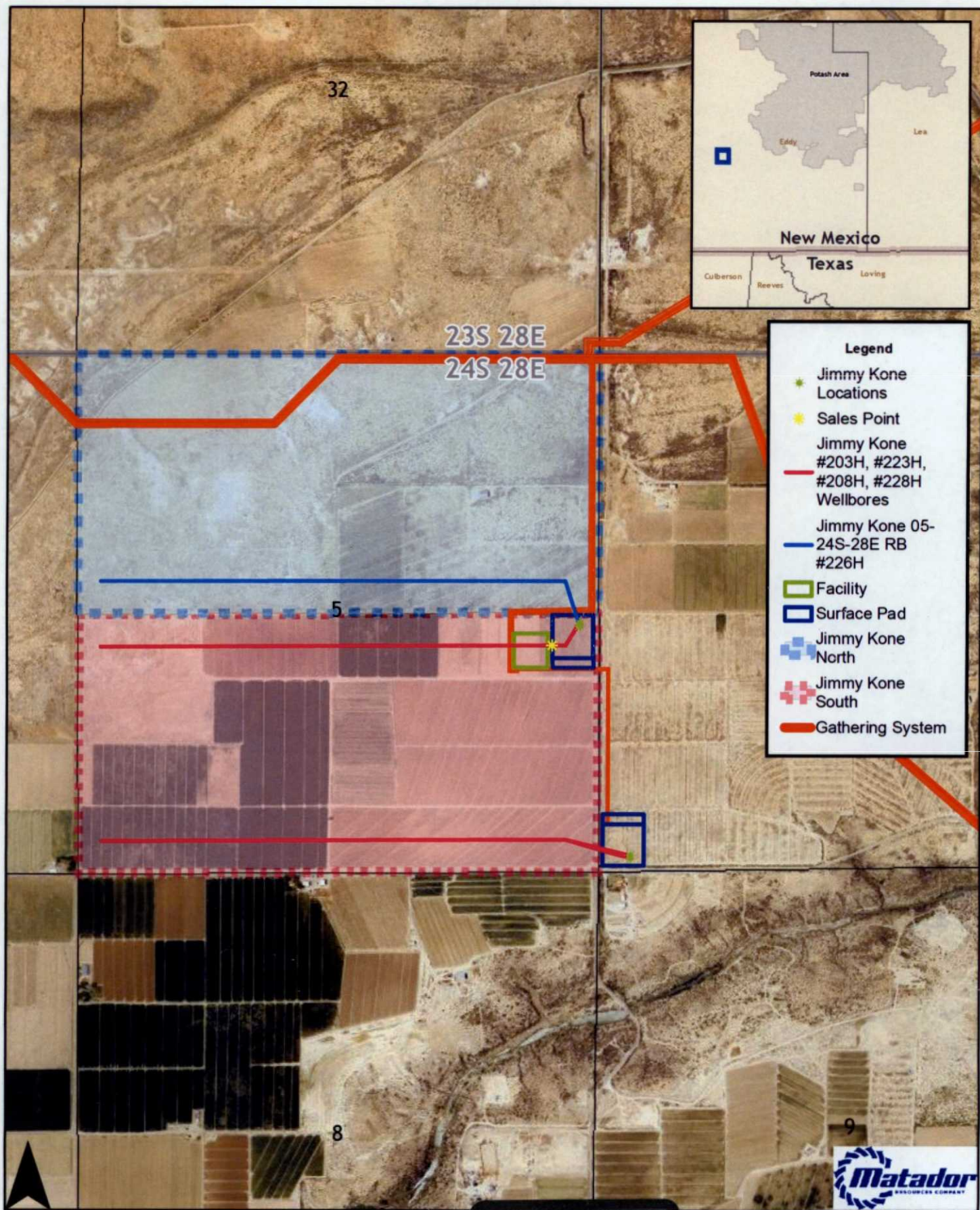
Your attention to this matter is appreciated.

Sincerely,

Jordan L. Kessler

ATTORNEY FOR
MATADOR PRODUCTION COMPANY

Jimmy Kone Land Plat

**EXHIBIT**

Southeast New Mexico

Date: November 10, 2016

Filename: JimmyKone_LandPlot

Projection: NAD27 State Plane New Mexico East FIPS 3001
Sources: IHS; ESRI;

Sources: IHS; ESRI;

tabbles®

District I
1625 N. French Drive, Hobbs, NM 88240
District II
811 S. First St., Artesia, NM 88210
District III
1000 Rio Brazos Road, Aztec, NM 87410
District IV
1220 S. St Francis Dr, Santa Fe, NM
87505

State of New Mexico
Energy, Minerals and Natural Resources Department

Form C-107-B
Revised August 1, 2011

OIL CONSERVATION DIVISION
1220 S. St Francis Drive
Santa Fe, New Mexico 87505

Submit the original
application to the Santa Fe
office with one copy to the
appropriate District Office.

APPLICATION FOR SURFACE COMMINGLING (DIVERSE OWNERSHIP)

OPERATOR NAME: Matador Production Company
OPERATOR ADDRESS: 5400 LBJ Freeway Tower 1 Suite 1500 Dallas, TX 75240
APPLICATION TYPE:

☐ Pool Commingling ☒ Lease Commingling ☐ Pool and Lease Commingling ☐ Off-Lease Storage and Measurement (Only if not Surface Commingled)

LEASE TYPE: ☒ Fee ☐ State ☐ Federal

Is this an Amendment to existing Order? ☐ Yes ☒ No If "Yes", please include the appropriate Order No. _____
Have the Bureau of Land Management (BLM) and State Land office (SLO) been notified in writing of the proposed commingling
☒ Yes ☐ No

(A) POOL COMMINGLING

Please attach sheets with the following information

(1) Pool Names and Codes	Gravities / BTU of Non-Commingled Production	Calculated Gravities / BTU of Commingled Production		Calculated Value of Commingled Production	Volumes

- (2) Are any wells producing at top allowables? ☐ Yes ☐ No
(3) Has all interest owners been notified by certified mail of the proposed commingling? ☐ Yes ☐ No.
(4) Measurement type: ☐ Metering ☐ Other (Specify)
(5) Will commingling decrease the value of production? ☐ Yes ☐ No If "yes", describe why commingling should be approved

(B) LEASE COMMINGLING

Please attach sheets with the following information

- (1) Pool Name and Code- Culebra Bluff, Wolfcamp, South (Gas) Code: 75750
(2) Is all production from same source of supply? ☒ Yes ☐ No
(3) Has all interest owners been notified by certified mail of the proposed commingling? ☒ Yes ☐ No
(4) Measurement type: ☒ Metering ☐ Other (Specify)

(C) POOL and LEASE COMMINGLING

Please attach sheets with the following information

- (1) Complete Sections A and E.

(D) OFF-LEASE STORAGE and MEASUREMENT

Please attached sheets with the following information

- (1) Is all production from same source of supply? ☒ Yes ☐ No
(2) Include proof of notice to all interest owners.

(E) ADDITIONAL INFORMATION (for all application types)

Please attach sheets with the following information

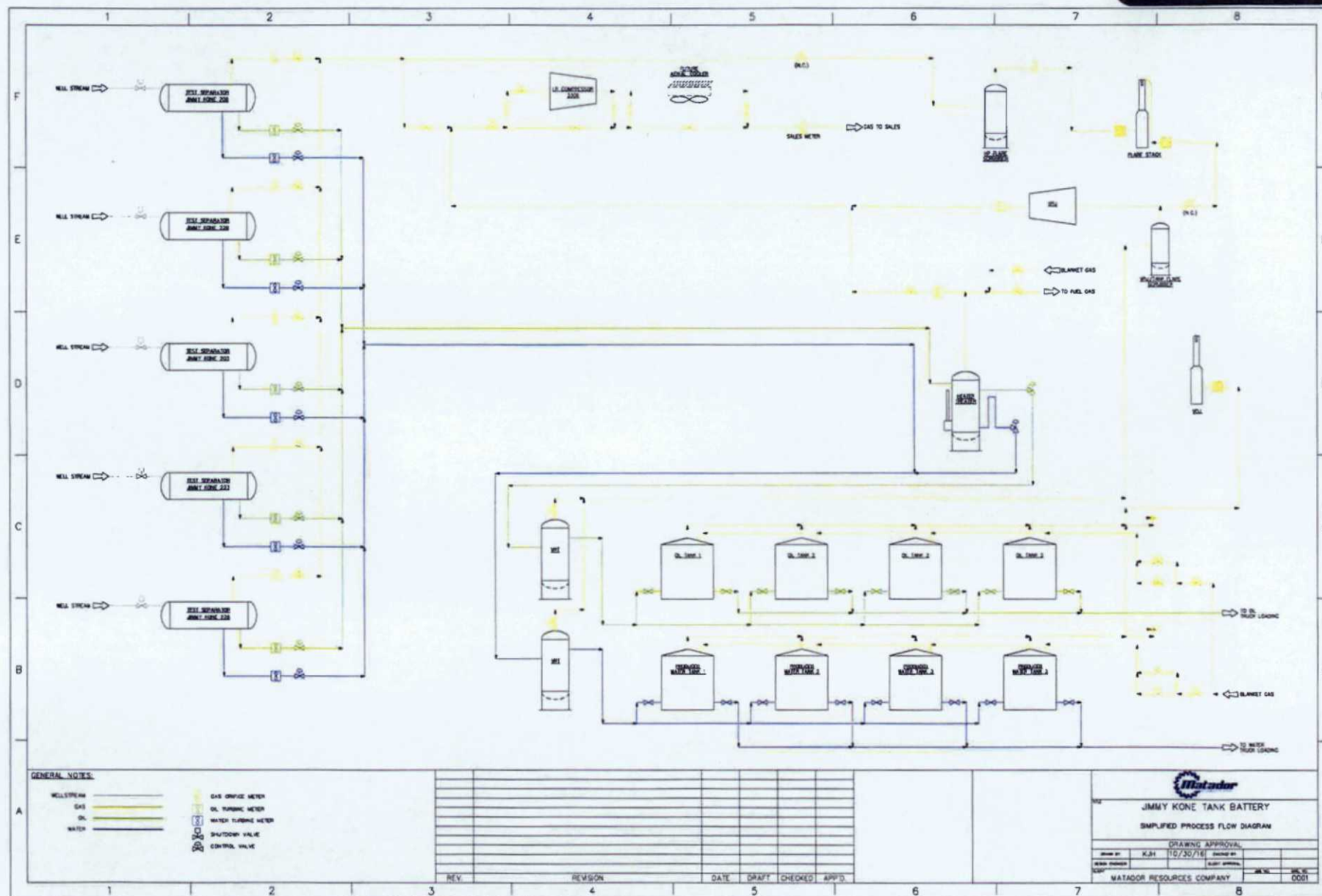
- (1) A schematic diagram of facility, including legal location.
(2) A plat with lease boundaries showing all well and facility locations. Include lease numbers if Federal or State lands are involved.
(3) Lease Names, Lease and Well Numbers, and API Numbers.

I hereby certify that the information above is true and complete to the best of my knowledge and belief.

SIGNATURE: [Signature] TITLE: Senior Production Engineer DATE: 11/22/16
TYPE OR PRINT NAME John Romano TELEPHONE NO.: (972) 371-5245
E-MAIL ADDRESS: jromano@matadorresources.com

EXHIBIT

2



Matador Production Company

One Lincoln Centre • 5400 LBJ Freeway • Suite 1500 • Dallas, Texas 75240
Voice 972.371.5245 • Fax 972.371.5201
jromano@matadorresources.com

John L. Romano
Senior Production Engineer

November 9, 2016

New Mexico Oil Conservation Division
1220 South St. Francis Drive
Santa Fe, NM 87505

Re: Application of Matador Production Company for administrative approval for off-lease measurement and approval to surface commingle (lease commingle) gas and oil production from the spacing units comprised of the S/2 and the N/2 of Section 5, Township 24 South, Range 28 East, NMPM, Eddy County, New Mexico (the "Lands")

To Whom This May Concern,

Matador Production Company ("Matador"), OGRID: 228937, requests to commingle the Black River; Wolfcamp, East (G) pool (Code 97442) in the N/2 and S/2 of Section 5, Township 24 South, Range 28 East. All wells are metered through their own test separator with an oil turbine meter and gas orifice meter. The oil and gas commingling will occur after individual measurement at each well. Gas exiting each well test flows into one gathering line, the Black River South Trunk Line. Each well on the Lands has and will have its own test separator with an orifice meter manufactured and assembled in accordance with American Gas Association (AGA) specifications. All primary and secondary Electronic Flow Measurement (EFM) equipment is tested and calibrated by a reputable Third party measurement company in accordance with industry specifications.

The orifice meter is the preferred measurement device utilized by midstream and E&P companies in the natural gas business. The gas samples are obtained at the time of the meter testing/calibration and the composition and heating value are determined by a laboratory in accordance with American Petroleum Institute (API) specifications to ensure accurate volume and Energy (MMBTU) determinations. See example from Fesco Laboratory attached as **Exhibit A** hereto.

The flow stream from each wellhead is demonstrated in the Process Flow Diagram (PFD) attached as **Exhibit B** hereto. The PFD shows that the water, oil, and gas leave the wellbore and flow into a wellhead test separator which separates the oil, gas, and water. The oil is measured via turbine meter which is calibrated periodically by a third party measurement company for accuracy. The gas is measured on a volume and MMBTU basis by an orifice meter and supporting EFM equipment in accordance with American Petroleum Association (API) Chapter 21.1. The gas is then sent into a gathering line where it is commingled with each of the other wells' metered gas.

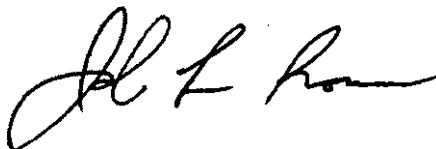


The gathering line gas is then metered by another orifice meter at the tank battery check to show the total volume of gas leaving the Tank Battery. This meter is tested and calibrated in accordance with industry specifications and volume and energy are determined on an hourly, daily, and monthly basis. Once the gas exits this final tank battery sales check it travels directly into a third party sales connect meter. The Third Party Pipeline has its own orifice meter that measures the gas for custody transfer. These meters are also calibrated periodically to ensure the measurement accuracy.

In conclusion, all the oil and gas produced on the Lands is and will be metered at each wellhead and allocated correctly using the same measurement equipment as the pipeline sales measurement specifications accepted by API as industry standard.

Very truly yours,

MATADOR PRODUCTION COMPANY

A handwritten signature in black ink, appearing to read "J L Romano", written in a cursive style.

John L. Romano
Production Engineer

District I
1625 N. French Dr., Hobbs, NM 88240
Phone: (575) 393-6161 Fax: (575) 393-0720

District II
811 S. First St., Artesia, NM 88210
Phone: (575) 748-1283 Fax: (575) 748-9720

District III
1000 Rio Brazos Road, Aztec, NM 87410
Phone: (505) 334-6178 Fax: (505) 334-6170

District IV
1220 S. St. Francis Dr., Santa Fe, NM 87505
Phone: (505) 476-3460 Fax: (505) 476-3462

State of New Mexico
Energy, Minerals & Natural Resources
Department
OIL CONSERVATION DIVISION
1220 South St. Francis Dr.
Santa Fe, NM 87505

FORM C-102
Revised August 1, 2011
Submit one copy to appropriate
District Office

AMENDED REPORT

WELL LOCATION AND ACREAGE DEDICATION PLAT

¹ API Number 30-015-43477		² Pool Code 75750		³ Well Location and Horizontal Dedication CULEBRA BLUFF;WOLFCAMP, SOUTH (GAS)					
⁴ Property Code 315284		⁵ Property Name JIMMY KONE 05-24S-28E RB				⁶ Well Number #223H			
⁷ OGRID No. 228937		⁸ Operator Name MATADOR PRODUCTION COMPANY				⁹ Elevation 3043'			
¹⁰ Surface Location									
UL or lot no. I	Section 5	Township 24-S	Range 28-E	Lot Idn -	Feet from the 2473'	North/South line SOUTH	Feet from the 320'	East/West line EAST	County EDDY
UL or lot no. L	Section 5	Township 24-S	Range 28-E	Lot Idn -	Feet from the 2310'	North/South line SOUTH	Feet from the 240'	East/West line WEST	County EDDY
¹¹ Dedicated Acres 320		¹² Joint or Infill		¹³ Consolidation Code		¹⁴ Order No.			

No allowable will be assigned to this completion until all interests have been consolidated or a non-standard unit has been approved by the division.

BOTTOM HOLE LOCATION NEW MEXICO EAST	LOWER MOST PERF. NEW MEXICO EAST	UPPER MOST PERF. NEW MEXICO EAST	SURFACE LOCATION NEW MEXICO EAST
<p>NAD 1927 X=566875 Y=453252 LAT.: N 32.2459216 LONG.: W 104.1170254</p> <p>NAD 1983 X=608056 Y=453311 LAT.: N 32.2460422 LONG.: W 104.1175202</p>	<p>NAD 1927 X=566965 Y=453253 LAT.: N 32.2459232 LONG.: W 104.1167343</p> <p>NAD 1983 X=608148 Y=453312 LAT.: N 32.2460438 LONG.: W 104.1172290</p>	<p>NAD 1927 X=571649 Y=453293 LAT.: N 32.2460066 LONG.: W 104.1015837</p> <p>NAD 1983 X=612832 Y=453352 LAT.: N 32.2461275 LONG.: W 104.1020878</p>	<p>NAD 1927 X=571659 Y=453456 LAT.: N 32.2464551 LONG.: W 104.1015509</p> <p>NAD 1983 X=612842 Y=453515 LAT.: N 32.2465759 LONG.: W 104.1020451</p>

Diagram showing well location with bearings and distances:

- Bottom Hole to Lower Most Perf: AZ = 269.51°, 90.0'
- Lower Most Perf to Upper Most Perf: AZ = 269.51°, 4684.1'
- Upper Most Perf to Surface Location: AZ = 183.43°, 183.5'
- Bottom Hole to Surface Location: AZ = 183.43°, 183.5'

17 OPERATOR CERTIFICATION

I hereby certify that the information contained herein is true and complete to the best of my knowledge and belief, and that this organization either owns a working interest or unshared mineral interest in the land including the proposed bottom hole location or has a right to drill this well at this location pursuant to a contract with an owner of such a mineral or working interest, or is a voluntary pooling agreement or a compulsory pooling order heretofore entered by the division.

11/14/16

Signature: Trey Goodwin Date: 11/14/16

Trey Goodwin

Printed Name: _____

tgoodwin@matadorresources.com

E-mail Address: _____

Diagram showing well location with bearings and distances:

- Bottom Hole to Lower Most Perf: AZ = 269.51°, 90.0'
- Lower Most Perf to Upper Most Perf: AZ = 269.51°, 4684.1'
- Upper Most Perf to Surface Location: AZ = 183.43°, 183.5'
- Bottom Hole to Surface Location: AZ = 183.43°, 183.5'

18 SURVEYOR CERTIFICATION

I hereby certify that the well location shown on this plat was plotted from field notes of actual surveys made by me or under my supervision, and that the same is true to the best of my belief.

11/04/2016

Date of Survey: 11/04/2016

Signature and Seal of Professional Surveyor: Michael B. Brown

MICHAEL B. BROWN
NEW MEXICO
18829
PROFESSIONAL SURVEYOR

Certificate Number: _____

DISTRICT I
 1625 N. Ranch Dr., Hobbs, NM 88240
 Phone: (505) 393-6161 Fax: (505) 393-0720
 DISTRICT II
 811 N. First St., Artesia, NM 88210
 Phone: (505) 748-1283 Fax: (505) 748-9720
 DISTRICT III
 1000 Rio Bravo Road, Artesia, NM 88210
 Phone: (505) 334-6178 Fax: (505) 334-6170
 DISTRICT IV
 1220 S. St. Francis Dr., Santa Fe, NM 87505
 Phone: (505) 476-3460 Fax: (505) 476-3462

State of New Mexico
 Energy, Minerals & Natural Resources
 Department
OIL CONSERVATION DIVISION
 1220 South St. Francis Dr.
 Santa Fe, NM 87505

FORM C-102
 Revised August 1, 2011
 Submit one copy to appropriate
 District Office

☐ AMENDED REPORT

WELL LOCATION AND ACREAGE DEDICATION PLAT

API Number 30-015-43475		Pool Code 75750	Pool Name CULEBRA BLUFF; WOLFCAMP, SOUTH (GAS)
Property Code	Property Name JIMMY KONE 05-24S-28E RB		Well Number #203H
OGRID No. 228937	Operator Name MATADOR PRODUCTION COMPANY		Elevation 3042'

10 Surface Location

UL or lot no.	Section	Township	Range	Lot No.	Feet from the	North/South line	Feet from the	East/West line	County
I	5	24-S	28-E	-	2533'	SOUTH	320'	EAST	EDDY

UL or lot no.	Section	Township	Range	Lot No.	Feet from the	North/South line	Feet from the	East/West line	County
L	5	24-S	28-E	-	2310'	SOUTH	240'	WEST	EDDY

Dedicated Acres 320	Order or Infill	Consolidation Code	Order No.
-------------------------------	-----------------	--------------------	-----------

No allowable will be assigned to this completion until all interests have been consolidated or a non-standard unit has been approved by the division.

16 BOTTOM HOLE LOCATION NEW MEXICO EAST NAD 1927 X=568875 Y=453252 LAT.: N 32.2458218 LONG.: W 104.1170254	LOWER MOST PERF. NEW MEXICO EAST NAD 1927 X=568865 Y=453253 LAT.: N 32.2458232 LONG.: W 104.1167343	UPPER MOST PERF. NEW MEXICO EAST NAD 1927 X=571849 Y=453293 LAT.: N 32.2480066 LONG.: W 104.1015837	SURFACE LOCATION NEW MEXICO EAST NAD 1927 X=571859 Y=453518 LAT.: N 32.2488201 LONG.: W 104.1015506	17 OPERATOR CERTIFICATION I hereby certify that the information contained herein is true and complete to the best of my knowledge and belief, and that this organization either owns a working interest or undivided mineral interest in the land underlying the proposed well location or has a right to drill this well at this location pursuant to a contract with an owner of such a mineral or working interest, or is a voluntary pooling agreement or a compulsory pooling order heretofore entered by the division. T. G. L. 11/21/15 Signature Date Trey Goodwin Printed Name TGoodwin@matadorresources.com E-mail Address
				18 SURVEYOR CERTIFICATION I hereby certify that the well location shown on this plat was plotted from field notes of actual surveys made by me or under my supervision, and that the same is true to the best of my belief. 09/18/2015 Date of Survey Signature and Seal of Professional Surveyor Certificate Number

S:\STAFF\TAYLOR\RESEARCH\SURVEY\JUNE_05-24S-28E_RB_2014\TAYLOR\PRODUCTION\JIMMY_KONE_05-24S-28E_RB_203H_REV1.DWG; 9/23/2015 3:09:29 PM

District I
1625 N. French Dr., Hobbs, NM 88240
Phone: (575) 393-6161 Fax: (575) 393-0720
District II
811 S. First St., Artesia, NM 88210
Phone: (575) 748-1283 Fax: (575) 748-9720
District III
1000 Rio Brazos Road, Aztec, NM 87410
Phone: (505) 334-6178 Fax: (505) 334-6170
District IV
1220 S. St. Francis Dr., Santa Fe, NM 87505
Phone: (505) 476-3460 Fax: (505) 476-3462

State of New Mexico
Energy, Minerals & Natural Resources
Department
OIL CONSERVATION DIVISION
1220 South St. Francis Dr.
Santa Fe, NM 87505

FORM C-102
Revised August 1, 2011
Submit one copy to appropriate
District Office

☐ AMENDED REPORT

WELL LOCATION AND ACREAGE DEDICATION PLAT

¹ API Number 30-015-43389		² Pool Code 75750	³ Pool Name CULEBRA BLUFF; WOLFCAMP, SOUTH (GAS)
⁴ Property Code	⁵ Property Name EDDIE SCOTT 05-24S-28E RB		⁶ Well Number #208H
⁷ GRID No. 228937	⁸ Operator Name MATADOR PRODUCTION COMPANY		⁹ Elevation 3039'

¹⁰ Surface Location									
UL or lot no.	Section	Township	Range	Lot Idn	Feet from the	North/South line	Feet from the	East/West line	County
P	5	24-S	28-E	-	804'	SOUTH	190'	EAST	EDDY

UL or lot no.	Section	Township	Range	Lot Idn	Feet from the	North/South line	Feet from the	East/West line	County
M	5	24-S	28-E	-	330'	SOUTH	240'	WEST	EDDY

¹¹ Dedicated Acres 320	¹² Joint or InRll	¹³ Consolidation Code	¹⁴ Order No. 2-14160 2-14160
--------------------------------------	------------------------------	----------------------------------	---

No allowable will be assigned to this completion until all interests have been consolidated or a non-standard unit has been approved by the division.

<p>17 OPERATOR CERTIFICATION I hereby certify that the information contained herein is true and complete to the best of my knowledge and belief, and that this organization either owns a working interest or undivided mineral interest in the land including the proposed bottom hole location or has a right to drill this well at this location pursuant to a contract with an owner of such a mineral or working interest, or is a voluntary posting agreement or a compulsory posting order heretofore entered by the division.</p> <p><i>T. G. L. L.</i> 9/24/15 Signature Date</p> <p><i>Tracy Goodwin</i> Printed Name</p> <p><i>tracy@matadorresources.com</i> E-Mail Address</p>			
<p>18 SURVEYOR CERTIFICATION I hereby certify that the well location shown on this plat was plotted from field notes of actual surveys made by me or under my supervision, and that the same is true to the best of my belief.</p> <p>09/18/2015 Date of Survey</p> <p><i>Michael B. Brown</i> Signature and Seal of Professional Surveyor</p> <p>18329 Certificate Number</p>			

BOTTOM HOLE LOCATION
NEW MEXICO EAST
NAD 1927
X=566869
Y=451272
LAT.: N 32.2404783
LONG.: W 104.1170562

LAST PERFORATION POINT
NEW MEXICO EAST
NAD 1927
X=566959
Y=451273
LAT.: N 32.2404800
LONG.: W 104.1167651

FIRST PERFORATION POINT
NEW MEXICO EAST
NAD 1927
X=571851
Y=451313
LAT.: N 32.2405635
LONG.: W 104.1015883

SURFACE LOCATION
NEW MEXICO EAST
NAD 1927
X=571791
Y=451788
LAT.: N 32.2418892
LONG.: W 104.1011350

6:WURVEYMATADOR_RESOURCES\EDDIE_SCOTT_05-24S-28E_RB_MATADOR_PRODUC\TLO_EDDIE_SCOTT_05-24S-28E_RB_208H.DWG 9/23/2015 5:16:48 PM Plotter

Submit 1 Copy To Appropriate District Office
District I - (575) 393-6161
1625 N. French Dr., Hobbs, NM 88240
District II - (575) 748-1283
811 S. First St., Artesia, NM 88210
District III - (505) 334-6178
1000 Rio Brazos Rd., Aztec, NM 87410
District IV - (505) 476-3460
1220 S. St. Francis Dr., Santa Fe, NM 87505

State of New Mexico
Energy, Minerals and Natural Resources

OIL CONSERVATION DIVISION
1220 South St. Francis Dr.
Santa Fe, NM 87505

Form C-103
Revised July 18, 2013

SUNDRY NOTICES AND REPORTS ON WELLS (DO NOT USE THIS FORM FOR PROPOSALS TO DRILL OR TO DEEPEN OR PLUG BACK TO A DIFFERENT RESERVOIR. USE "APPLICATION FOR PERMIT" (FORM C-101) FOR SUCH PROPOSALS.)		WELL API NO. 30-015-43389
1. Type of Well: Oil Well <input type="checkbox"/> Gas Well <input checked="" type="checkbox"/> Other		5. Indicate Type of Lease STATE <input type="checkbox"/> FEE <input checked="" type="checkbox"/>
2. Name of Operator MATADOR PRODUCTION COMPANY		6. State Oil & Gas Lease No.
3. Address of Operator 5400 LBJ FREEWAY, STE 1500, DALLAS, TX 75240		7. Lease Name or Unit Agreement Name EDDIE SCOTT 05-24S-28E- RB
4. Well Location Unit Letter P : 804 feet from the S line and 190 feet from the E line Section 5 Township 24S Range 28E NMPM County EDDY		8. Well Number 208H
11. Elevation (Show whether DR, RKB, RT, GR, etc.) 3039' GR		9. OGRID Number 228937
		10. Pool name or Wildcat CULEBRA BLUFF;WOLFCAMP, SOUTH (GAS)

12. Check Appropriate Box to Indicate Nature of Notice, Report or Other Data

NOTICE OF INTENTION TO:

PERFORM REMEDIAL WORK ☐ PLUG AND ABANDON ☐
TEMPORARILY ABANDON ☐ CHANGE PLANS ☐
PULL OR ALTER CASING ☐ MULTIPLE COMPL ☐
DOWNHOLE COMMINGLE ☐
CLOSED-LOOP SYSTEM ☐
OTHER: CHANGE WELL NAME ☒

SUBSEQUENT REPORT OF:

REMEDIAL WORK ☐ ALTERING CASING ☐
COMMENCE DRILLING OPNS. ☐ P AND A ☐
CASING/CEMENT JOB ☐

OTHER: ☐

13. Describe proposed or completed operations. (Clearly state all pertinent details, and give pertinent dates, including estimated date of starting any proposed work). SEE RULE 19.15.7.14 NMAC. For Multiple Completions: Attach wellbore diagram of proposed completion or recompletion.

PLEASE CHANGE WELL NAME TO: JIMMY KONE 05-24S-28E RB
WELL NUMBER TO REMAIN THE SAME.

(315284)

NM OIL CONSERVATION
ARTESIA DISTRICT

OCT 01 2015

RECEIVED

Spud Date: PENDING

Rig Release Date:

I hereby certify that the information above is true and complete to the best of my knowledge and belief.

SIGNATURE Ava Monroe TITLE Sr. ENGINEERING TECHNICIAN DATE 09/28/2015

Type or print name For State Use Only E-mail address: amonroe@matadorresources.com PHONE: 972-371-5218

APPROVED BY: AD Dade TITLE Dist P Supervisor DATE 10-1-2015

Conditions of Approval (if any):

District I
1625 N French Dr., Hobbs, NM 88240
Phone (505) 393-6161 Fax (505) 393-0720
District II
811 S First St., Artesia, NM 88210
Phone (505) 748-1283 Fax (505) 748-9720
District III
1000 Rio Brazos Road, Aztec, NM 87410
Phone (505) 334-6178 Fax (505) 334-6170
District IV
1220 S St Francis Dr., Sante Fe, NM 87505
Phone (505) 476-3460 Fax (505) 476-3462

State of New Mexico
Energy, Minerals & Natural Resources
Department
OIL CONSERVATION DIVISION
1220 South St. Francis Dr.
Sante Fe, NM 87505

FORM C-102
Revised August 1, 2011
Submit one copy to appropriate
District Office

☐ AMENDED REPORT

WELL LOCATION AND ACREAGE DEDICATION PLAT

API Number 30-015-43542		Pool Code 96712	Pool Name Pierce Crossing; Wolfcamp, NW (Gas)
Property Code 315284	Property Name JIMMY KONE 05-24S-28E RB		Well Number #228H
GRID No. 228937	Operator Name MATADOR PRODUCTION COMPANY		Elevation 3034'

10 Surface Location									
UL or lot no.	Section	Township	Range	Lot Idn	Feet from the	North/South line	Feet from the	East/West line	County
M	4	24-S	28-E	-	161'	SOUTH	380'	WEST	EDDY

UL or lot no.	Section	Township	Range	Lot Idn	Feet from the	North/South line	Feet from the	East/West line	County
M	5	24-S	28-E	-	660'	SOUTH	240'	WEST	EDDY

Dedicated Acres 320	Joint or In Reg	Consolidation Code	Order No.
------------------------	-----------------	--------------------	-----------

No allowable will be assigned to this completion until all interests have been consolidated or a non-standard unit has been approved by the division.

16				5	4	
BOTTOM HOLE LOCATION NEW MEXICO EAST NAD 1927 X=566870 Y=451602 LAT.: N 32.2413849 LONG.: W 104.1170511 NAD 1983 X=608053 Y=451680 LAT.: N 32.2415056 LONG.: W 104.1175457		LAST PERFORATION POINT NEW MEXICO EAST NAD 1927 X=567290 Y=451605 LAT.: N 32.2413924 LONG.: W 104.1158928 NAD 1983 X=608473 Y=451664 LAT.: N 32.2415131 LONG.: W 104.1181872		FIRST PERFORATION POINT NEW MEXICO EAST NAD 1927 X=571321 Y=451639 LAT.: N 32.2414633 LONG.: W 104.1026557 NAD 1983 X=612504 Y=451698 LAT.: N 32.2415842 LONG.: W 104.1031498		SURFACE LOCATION NEW MEXICO EAST NAD 1927 X=572361 Y=451150 LAT.: N 32.2401123 LONG.: W 104.0982935 NAD 1983 X=613545 Y=451209 LAT.: N 32.2402333 LONG.: W 104.0997874
17 OPERATOR CERTIFICATION I hereby certify that the information contained herein is true and complete to the best of my knowledge and belief, and that this organization either owns a working interest or undivided mineral interest in the land underlying the proposed bottom hole location, or has a right to drill this well of the American Petroleum Institute or a contract with an owner of such a mineral or working interest, or to a subsidiary pooling agreement or a compulsory pooling order, whichever is applicable to the situation. Signature: <u>Trey Goodwin</u> Date: <u>12/21/15</u> Printed Name: <u>Trey Goodwin</u> E-mail Address: <u>TGoodwin@matadorresources.com</u>						
18 SURVEYOR CERTIFICATION I hereby certify that the well location shown on this plat was plotted from field notes of actual surveys made by me or under my supervision, and that the same is true to the best of my belief. Date of Survey: <u>10/15/2015</u> Signature and Seal: <u>MICHAEL B. BROWN</u> Certification Number: <u>18829</u>						

Submit 1 Copy To Appropriate District Office
District I - (575) 393-6161
1625 N. French Dr., Hobbs, NM 88240
District II - (575) 748-1283
811 S First St., Artesia, NM 88210
District III - (505) 334-6178
1000 Rio Brazos Rd., Aztec, NM 87410
District IV - (505) 476-3460
1220 S. St. Francis Dr., Santa Fe, NM 87505

State of New Mexico
Energy, Minerals and Natural Resources

OIL CONSERVATION DIVISION
1220 South St. Francis Dr.
Santa Fe, NM 87505

Form C-103
Revised July 18, 2013

WELL API NO. 30-015-43542	
5. Indicate Type of Lease STATE <input type="checkbox"/> FEE <input checked="" type="checkbox"/>	
6. State Oil & Gas Lease No.	
7. Lease Name or Unit Agreement Name JIMMY KONE 05 24S 28E RB	
8. Well Number 228H	
9. OGRID Number 228937	
10. Pool name or Wildcat PIERCE CROSSING; WOLFCAMP, NW (GAS)	
SUNDRY NOTICES AND REPORTS ON WELLS (DO NOT USE THIS FORM FOR PROPOSALS TO DRILL OR TO DEEPEN OR PLUG BACK TO A DIFFERENT RESERVOIR. USE "APPLICATION FOR PERMIT" (FORM C-101) FOR SUCH PROPOSALS.)	
1. Type of Well: Oil Well <input type="checkbox"/> Gas Well <input checked="" type="checkbox"/> Other	
2. Name of Operator MATADOR PRODUCTION COMPANY	
3. Address of Operator 5400 LBJ FREEWAY, STE. 1500, DALLAS, TX 75240	
4. Well Location Unit Letter M : 161 feet from the South line and 380 feet from the West line Section 4 Township 24S Range 28E NMPM County Eddy	
11. Elevation (Show whether DR, RKB, RT, GR, etc.) 3034' GR	

12. Check Appropriate Box to Indicate Nature of Notice, Report or Other Data

NOTICE OF INTENTION TO:		SUBSEQUENT REPORT OF:	
PERFORM REMEDIAL WORK <input type="checkbox"/>	PLUG AND ABANDON <input type="checkbox"/>	REMEDIAL WORK <input type="checkbox"/>	ALTERING CASING <input type="checkbox"/>
TEMPORARILY ABANDON <input type="checkbox"/>	CHANGE PLANS <input type="checkbox"/>	COMMENCE DRILLING OPNS <input type="checkbox"/>	P AND A <input type="checkbox"/>
PULL OR ALTER CASING <input type="checkbox"/>	MULTIPLE COMPL <input type="checkbox"/>	CASING/CEMENT JOB <input type="checkbox"/>	
DOWNHOLE COMMINGLE <input type="checkbox"/>			
CLOSED-LOOP SYSTEM <input type="checkbox"/>			
OTHER: Pool correction <input checked="" type="checkbox"/>		OTHER: <input type="checkbox"/>	

13. Describe proposed or completed operations. (Clearly state all pertinent details, and give pertinent dates, including estimated date of starting any proposed work). SEE RULE 19.15.7.14 NMAC. For Multiple Completions: Attach wellbore diagram of proposed completion or recompletion.

Please correct the pool name/code to: CULBERRA BLUFF; WOLFCAMP, SOUTH (GAS)/75750

NM OIL CONSERVATION
ARTESIA DISTRICT

JAN 12 2016

RECEIVED

Spud Date: Pending Rig Release Date:

I hereby certify that the information above is true and complete to the best of my knowledge and belief.

SIGNATURE Ava Monroe TITLE Sr. Engineering Technician DATE 1/07/2016

Type or print name Ava Monroe E-mail address: amonroe@matadorresources.com PHONE: 972-371-5218

For State Use Only

APPROVED BY: Dr. J. Spencer TITLE Dist. Engineer DATE 1/13/16

Conditions of Approval (if any):

District I
1625 N. French Dr., Hobbs, NM 88240
Phone: (575) 393-6161 Fax: (575) 393-0720
District II
111 S. First St., Artesia, NM 88210
Phone: (575) 748-1283 Fax: (575) 748-9720
District III
1000 Rio Brazos Road, Aztec, NM 87410
Phone: (505) 334-6178 Fax: (505) 334-6170
District IV
1220 S. St. Francis Dr., Santa Fe, NM 87505
Phone: (505) 476-3460 Fax: (505) 476-3462

State of New Mexico
Energy, Minerals & Natural Resources
Department
OIL CONSERVATION DIVISION
1220 South St. Francis Dr.
Santa Fe, NM 87505

FORM C-102
Revised August 1, 2011
Submit one copy to appropriate
District Office

☐ AMENDED REPORT

WELL LOCATION AND ACREAGE DEDICATION PLAT

1 API Number		2 Pool Code		3 Pool Name	
4 Property Code		5 Property Name JIMMY KONE 05-24S-28E RB			6 Well Number #226H
7 OGRID No.		8 Operator Name MATADOR PRODUCTION COMPANY			9 Elevation 3042'

10 Surface Location

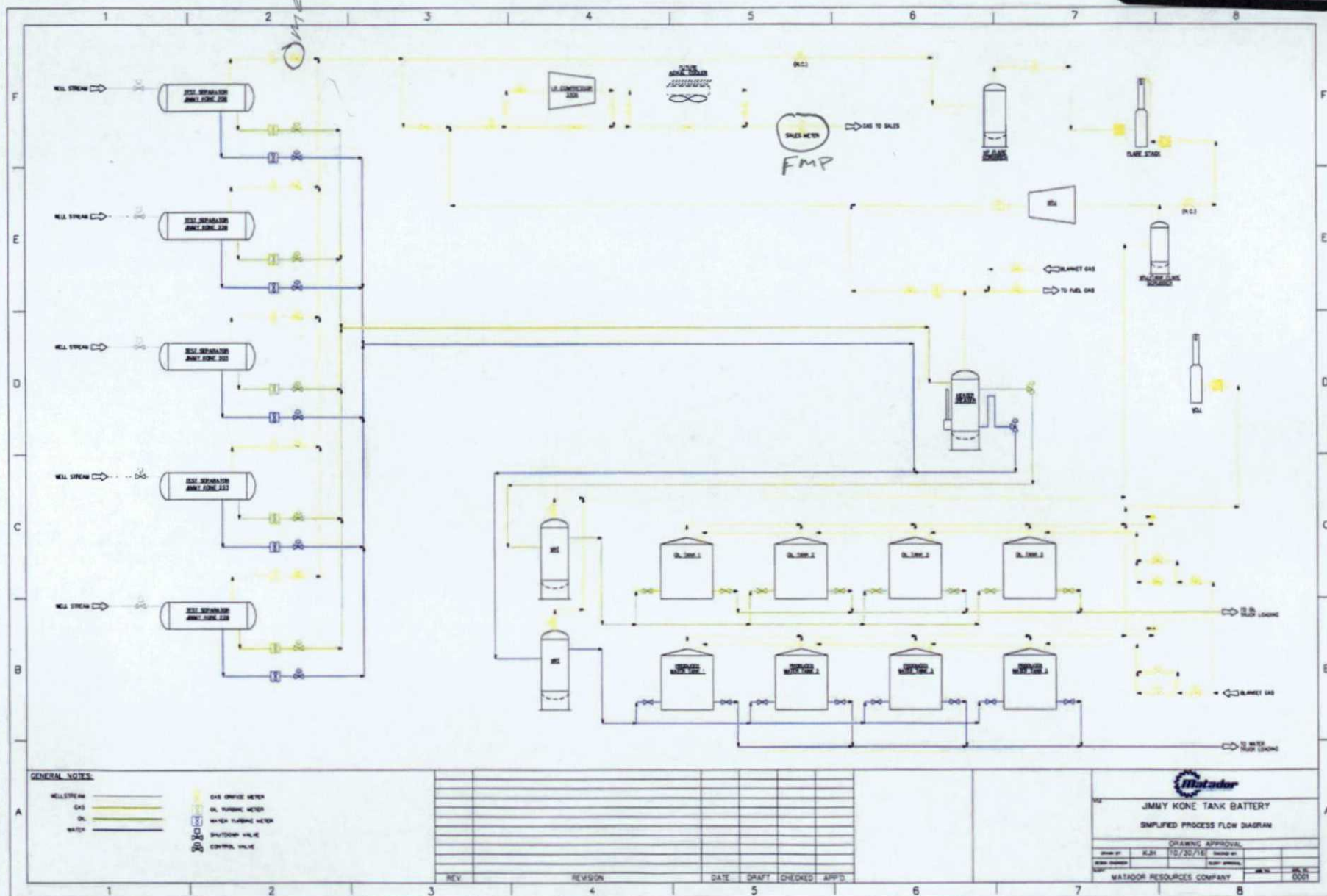
UL or lot no.	Section	Township	Range	Lot Idn	Feet from the	North/South line	Feet from the	East/West line	County
I	5	24-S	28-E	-	2502'	SOUTH	190'	EAST	EDDY

UL or lot no.	Section	Township	Range	Lot Idn	Feet from the	North/South line	Feet from the	East/West line	County
E	5	24-S	28-E	-	2316'	NORTH	240'	WEST	EDDY

11 Dedicated Acres 320	12 Joint or Infill	13 Consolidation Code	14 Order No.
----------------------------------	--------------------	-----------------------	--------------

No allowable will be assigned to this completion until all interests have been consolidated or a non-standard unit has been approved by the division.

<p>LAST PERFORATION POINT NEW MEXICO EAST NAD 1927 X=566967 Y=453918 LAT.: N 32.2477506 LONG.: W 104.1167239 NAD 1983 X=608150 Y=453977 LAT.: N 32.2478712 LONG.: W 104.1172187</p>		<p>FIRST PERFORATION POINT NEW MEXICO EAST NAD 1927 X=571648 Y=453939 LAT.: N 32.2477825 LONG.: W 104.1015826 NAD 1983 X=612831 Y=453998 LAT.: N 32.2479033 LONG.: W 104.1020788</p>		<p>17 OPERATOR CERTIFICATION I hereby certify that the information contained herein is true and complete to the best of my knowledge and belief, and that this organization either owns a working interest or undivided mineral interest in the land including the proposed bottom hole location or has a right to drill this well at this location pursuant to a contract with an owner of such a mineral or working interest, or is a voluntary pooling agreement or a compulsory pooling order heretofore entered by the division.</p> <p>Signature _____ Date _____</p> <p>Printed Name _____</p> <p>E-mail Address _____</p>	
<p>BOTTOM HOLE LOCATION NEW MEXICO EAST NAD 1927 X=566877 Y=453917 LAT.: N 32.2477500 LONG.: W 104.1170150 NAD 1983 X=608060 Y=453976 LAT.: N 32.2478706 LONG.: W 104.1175098</p>		<p>SURFACE LOCATION NEW MEXICO EAST NAD 1927 X=571788 Y=453486 LAT.: N 32.2465369 LONG.: W 104.1011305 NAD 1983 X=612971 Y=453543 LAT.: N 32.2466578 LONG.: W 104.1016246</p>		<p>18 SURVEYOR CERTIFICATION I hereby certify that the well location shown on this plat was plotted from field notes of actual surveys made by me or under my supervision, and that the same is true to the best of my belief.</p> <p>08/02/2016</p> <p>Date of Survey _____ Signature and Seal of Surveyor _____</p> <p>MICHAEL B. BROWN NEW MEXICO 18329 SURVEYOR</p> <p>Certificate Number _____</p>	



Application of Matador Production Company for administrative approval for off-lease measurement and approval to surface commingle (lease commingle) oil and gas production from the spacing units comprised of the N/2 of Section 5 and the S/2 of Section 5, Township 24 South, Range 28 East, NMPM, Eddy County, New Mexico.

A G Tolbert Cooper and Margie A Cooper
Trust, Trustees of the A.G. Tolbert Cooper
and Margie A. Cooper Trust
1261 W 71st Place
Denver, CO 80221
7015 1520 0002 0439 0188

Adam Jeffrey Hussain
2478 Alfa Circle
Las Vegas, NV, 89142
7015 1520 0002 0439 0171

Aileen Johnson, Individually and as
Executrix of the Estate of Robert L.
Johnson, Jr., Deceased
Unknown

Alisa Ogden
2302 Forehand Road
Carlsbad, NM 88220
7016 0340 0000 0203 0499

Amber Lyn Gentry
217 S 183rd E Ave
Tulsa, OK 74108
7016 0340 0000 0203 0482

Amy Abbott Walker
2880 S Valentia St
Denver, CO, 80231
7016 0340 0000 0203 0475

Annette Hall
13200 SE 110th Street
Oklahoma City, OK 73165
7016 0340 0000 0203 0468

Barbara Gudgen Bewley
136 Sunflower Road
Madison, MS 39110-1877
7016 0340 0000 0203 0451

Barbara Lee Backman, Inc
1516 W. Riverside Ave.
Spokane, WA 99201
7016 0340 0000 0203 0444

Beth Cagle Webster
P.O. Box 282
Lake Orion, MI 48361
7016 0340 0000 0203 0437

Benting Revocable Trust
c/o Susan Ogden Benting Trustee
1900 Richard Jones Road, Apt P-3
Nashville, TN 37215
7016 0340 0000 0203 0420

Bethany C Webster Okurowski
2782 Calle Alegre
Pleasanton, CA 94566
7016 0340 0000 0203 0413

Big Three Energy Group, LLC
P.O. Box 429
Roswell, NM 88202
7016 0340 0000 0203 0406

Bonita Kaufman
2814 N Washington
Enid, OK 73701
7016 0340 0000 0203 0895

Brett Guitar Witherspoon
P.O. Box 100635
Fort Worth, TX 76185
7016 0340 0000 0203 0888

Caren Gal Lucas
P.O. Box 90621
Austin, TX 78709-0621
7016 0340 0000 0203 0871

Caren Gall Lucas, Trustee of the
Caren Gall Lucas Exempt Trust
P.O. Box 90621
Austin, TX 78709-0621
7016 0340 0000 0203 0864

Carol L. Habig
8718 Wornall Rd. Apt. 3
Kansas City, MO 64114
7016 0340 0000 0203 0857

Carlsbad Irrigation District
5117 Grandi Road
Carlsbad, NM 88220
7016 0340 0000 0203 0840

Carol Stuessi Dyson
2758 S 1020
W Nibley, UT, 84321
7016 0340 0000 0203 0833

Carolyn Ann Gilstrap, dealing in
sole and separate property
1938 E 4th Street
Okmulgee, OK 74447
7016 0340 0000 0203 0826

Catherine Gall Parker
3721 Pallos Verdas
Dallas, TX 75229
7016 0340 0000 0203 0819

Catherine Gall Parker and Craig Parker,
Co-trustees of the Catherine Gall Parker
Exempt Trust
3721 Pallos Verdas
Dallas, TX 75229
7016 0340 0000 0203 0802

Christy D Baker
1112 S. 34th Street
Broken Arrow, OK 74014
7016 0340 0000 0203 1403

Covert Trust dtd 11/01/2010
PO Box 22294
Denver, CO 80222-0294
7016 0340 0000 0203 1854

Craig W Ogden
200 W Ogden Road
Loving, NM 88256
7016 0340 0000 0203 1847

Cynthia Ann Webster Ellis
124 W Teakwood Place
Chandler, AZ, 85248
7016 0340 0000 0203 1830



Application of Matador Production Company for administrative approval for off-lease measurement and approval to surface commingle (lease commingle) oil and gas production from the spacing units comprised of the N/2 of Section 5 and the S/2 of Section 5, Township 24 South, Range 28 East, NMPM, Eddy County, New Mexico.

Daniel Craig
1390 Broadway #B-101
Placerville, CA 95667
7016 0340 0000 0203 1823

Daniel Robert Harvey
4209 145th Place S E
Snohomish, WA, 98296
7016 0340 0000 0203 1816

Daniel W. Gillespie
9483 Garden Knoll Way
Lakeside, CA 92040
7016 0340 0000 0203 1809

Darlene Fitzgerald, dealing in
sole and separate property
12610 N 120th E Ave
Collinsville, OK 74021
7016 0340 0000 0203 1793

David Stuessi Gillespie
9483 Garden Knoll Way
Lakeside, CA 92040
7016 0340 0000 0203 1786

David Thomas Webster
3932 Hunting Pass
Hope Mills, NC, 28348
7016 0340 0000 0203 1779

Donald E. Woehrman, Trustee of the
James R. Woehrman Trust UTA
Dated 9-22-10
12209 Ridgeview Road
Kearney, MO 64060
7016 1370 0000 0803 8275

Donald E. Woehrman, Trustee of the
Norma J. Woehrman Trust UTA
Dated 9-22-10
12209 Ridgeview Road
Kearney, MO 64060
7016 1370 0000 0803 8268

Donnie Fitzgerald
11239 S 49th W Ave
Sapulpa, OK 74066
7016 1370 0000 0803 8251

Donnie Ray Fitzgerald
JCCC MSU 3 58T - #648429
216 North Murray St
Helena, OK 73741
7016 1370 0000 0803 8244

Ellen Stuessi Larkin
Geisenbergstr 18
66892 Bruchmuhlbach
GERMANY

Featherstone Development
Corporation
P. O. Box 429
Roswell, NM 88202
7016 1370 0000 0803 8237

Frank A. Myers
2616 Havelock CT
Steilacoom, WA 98388
7016 1370 0000 0803 8220

Frederick J Stuessi
5625 Hall Street
Shawnee, KS, 66217
7016 1370 0000 0803 8213

Gayle N. Nicolay, Trustee of the
Gayle N. Nicolay Revocable Trust
5528 Tahoe Lane
Fairway, KS 66205
7016 1370 0000 0803 8206

Gaylan Andrew Hussain
16728 Celtic Street
Granada Hills, CA 91344
7016 1370 0000 0803 8190

Gordon Fitzgerald
2497 N 234 St
Haskell, OK 74436
7016 1370 0000 0803 8183

Gregg W Stuessi
121 Chesterfield Place SW
Leesburg, VA, 20175
7016 0340 0000 0202 8779

Guitar Galusha, LP
P.O. Box 1438
Abilene, TX 79604
7016 0340 0000 0202 8762

Guitar Land & Cattle, LP
P.O. Box 2213
Abilene, TX 79604
7016 0340 0000 0202 8755

Guy Pittman Witherspoon, III
P.O. Box 100403
Fort Worth, TX 76185
7016 0340 0000 0202 8748

Harvey R Striegler Jr
2505 East Villa Maria Road,
Apt 111
Bryan, TX 77802
7016 0340 0000 0202 8731

Jack Francis Habig, Jr.
9414 E 85th St.
Raytown, MO 64138
7016 0340 0000 0202 8724

Jack G. Woods, Jr.
P.O. Box 341342
Austin, TX 78734
7016 0340 0000 0202 8717

Jaime Cohen-Stacey
3056 Eastwood Terrace
The Villages, FL 32163
7016 0340 0000 0202 8700

James K. Gillespie
9483 Garden Knoll Way
Lakeside, CA 92040
7016 0340 0000 0203 1796

James Minor Alexander
P.O. Box 58
Abilene, TX 79604
7016 0340 0000 0202 0789

Application of Matador Production Company for administrative approval for off-lease measurement and approval to surface commingle (lease commingle) oil and gas production from the spacing units comprised of the N/2 of Section 5 and the S/2 of Section 5, Township 24 South, Range 28 East, NMPM, Eddy County, New Mexico.

James R Woehrman Trust dtd
9/22/10 - Trustee - Donald E Woeh
12209 Ridgeview Road
Kearney, MO 64060
7016 0340 0000 0203 0772

Janice M Stuessi
1466 E Sandy Hills Dr
Sandy, UT, 84093
7016 0340 0000 0203 0741

Jennifer Seltzer
2053 16th Street
Cuyahoga, OH 44223
7016 0340 0000 0203 0710

Joanne Johnson
2700 Somerset Dr #217
Prairie Village, KS, 66206
7015 1520 0002 0439 0157

John Guitar
P.O. Box 1121
Clyde, TX 79510
7015 1520 0002 0439 0126

John Mark Pickard
8707 E Florida Ave. #914
Denver, CO 80231
7015 1520 0002 0439 0096

Joshua M. Bowen
1210 Ridge Circle Apt A
Tonganoxie, KS 66086
7015 1520 0002 0439 0072

Judith Ann Maris Sheldon
13731 Bay Hill Court
Des Moines, IA, 50325
7015 1520 0002 0439 0041

Hayden E Kimbley
PO Box 126
Loving, NM 88256-0126
7016 1370 0000 0803 9715

James W. Witt
1026 N. Stanley Street
Medical Lake, WA 99022
7016 0340 0000 0203 0765

Jannette A Tyree, dealing in
sole and separate property
3209 SW 65 Street
Oklahoma City, OK 73159
7016 0340 0000 0203 0734

Jeri Alexander Lott
9209 York Place
Lubbock, TX 79424
7016 0340 0000 0203 0703

John Alexander Guitar and Margaret Ann
Guitar, Trustees of the Earl B. Guitar, Jr. &
Margaret Ann Guitar Revocable Trust
P.O. Box 748
Abilene, TX 79604
7015 1520 0002 0439 0140

John Guitar Witherspoon, Jr
7404 Lemonwood Drive
Fort Worth, TX 76133
7015 1520 0002 0439 0119

John T. Witt
1026 N. Stanley Street
Medical Lake, WA 99022
7015 1520 0002 0439 0089

JPH Holdings, L.P.
4400 Arcady
Dallas, TX 75205
7015 1520 0002 0439 0065

Judy Guitar Uhey
P.O. Box 632
Elizabethtown, KY 42702
7015 1520 0002 0439 0034

Irene M Harvey, AIF - Daniel
R Harvey
4209 145th Place S E
Snohomish, WA, 98296
7016 1370 0000 0803 9708

Janice L. Stuessi
5099 Snowberry Lane
Victor, ID, 83455
7016 0340 0000 0203 0758

Jeannette Stacey
3056 Eastwood Terrace
The Villages, FL 32163
7016 0340 0000 0203 0727

Jeri Alexander Magnum and First Financial
Trust and Asset Management, Trustees of the
Jane Alexander Rhodes Revocable Trust
P.O. Box 701
Abilene, Texas 79604
7016 0340 0000 0202 0164

John Allen Fitzgerald, dealing
in sole and separate property
3540 E King Place
Tulsa, OK 74115
7015 1520 0002 0439 0133

John Lewis Maris Jr
411 S Random Road
Bailey, CO, 80421
7015 1520 0002 0439 0102

Joseph Fitzgerald
Unknown

JTV Partnership
P O Box 1713
Roswell, NM 88202
7015 1520 0002 0439 0058

Julie Sherar
7 N Oak Terrace
Arden, NC, 28704
7015 1520 0002 0439 0027

John T Witt
1026 N. Stanley St.
Medical Lake, WA 99022
7016 1370 0000 0803 9692

Application of Matador Production Company for administrative approval for off-lease measurement and approval to surface commingle (lease commingle) oil and gas production from the spacing units comprised of the N/2 of Section 5 and the S/2 of Section 5, Township 24 South, Range 28 East, NMPM, Eddy County, New Mexico.

Karen Lenise Phillips
5437 S Primavera Drive
Fort Mohave, AZ, 86426
7016 1370 0000 0803 9685

Karen M Pickard-Lawson
1040 E 44th Street S
Wichita, KS, 67216
7016 1370 0000 0803 9678

Karen Ogden Cortese
2166 Billy The Kid Drive
Ft Sumner, NM 88119
7016 1370 0000 0803 9661

Karl F. Myers
2616 Havelock CT
Steilacoom, WA 98388
7016 1370 0000 0803 9654

Karl Richard Stacey
318 Bordeaux Drive
La Porte, IN 46350
7016 1370 0000 0803 9647

Katherine Forest Stacey Baxter
310 Alma Real Dr
Pacific Palasades , CA, 90272
7016 1370 0000 0803 9630

Keith Stuessi
5000 Meadville Street
Excelsior, MN, 55331
7016 1370 0000 0803 9623

Kelli Arleen Stuessi Clifford
8119 Chestnut Glen Ave
Las Vegas, NV, 89131
7016 1370 0000 0803 8534

Kelly Woods Leach
312 Greatview Circle
Birmingham, AL 35226
7016 1370 0000 0803 8541

Kevin Adam Stuessi
221 West 78th Apt. G
New York, NY 10024
7016 1370 0000 0803 8558

Kimball Stacey
2014 Stratford Road
Lawrence, KS, 66044
7016 1370 0000 0803 8565

Kimberley A. Woehrman
16016 Prairie Way
Basehor, KS 66007
7016 1370 0000 0803 8572

Kristin Monaco
1038 E Osage Ave
Apache Junction, AZ, 85119
7016 1370 0000 0803 8589

Laplante/Johnson Fmly Tr, Joel
S Johnson, Trustee
7275 S Sundown Circle
Littleton, CO 80120
7016 1370 0000 0803 8596

Laurel B Anderson Burgoine
201 Aladdin Street
Palm Springs, CA 92264
7016 1370 0000 0803 8602

Laurel Jane Pickard
8305 W. Dana St.
Milwaukee, WI 53214
7016 1370 0000 0803 8619

Leslie Guitar Nichols
P.O. Box 327
Big Spring, TX 79721
7016 1370 0000 0803 8626

Leslie David Guitar
P.O. Box 2228
Brownwood, TX 76804
7016 1370 0000 0803 8633

Linda Carol Burgoine Fiorillo
(Deceased)
Linda Farrell, daughter
8305 W. Dana St.
Milwaukee, WI 53214
7016 1370 0000 0803 8640

Robert D. Pickard
417 Apple Ave
Albertville, AL 35950
7016 1370 0000 0803 8657

Lost Creek Royalties, LP
PO Box 11148
Midland, Texas 79702
7016 1370 0000 0803 8664

Louis Turner
107 S Muirfield
Wichita, KS 67209
7016 1370 0000 0803 8671

Maria Stuessi Foley
91 Little Herring Road
Plymouth, MA 02360
7016 1370 0000 0803 8688

Marlan Stacey
3056 Eastwood Terrace
The Villages, FL 32163
7016 1370 0000 0803 8695

Marcia A Nash
2613 Clark Ave
Billings, MT, 59102
7016 1370 0000 0803 8701

Maria S Stuessi
91 Little Herring Road
Plymouth, MA, 02360
7016 1370 0000 0803 8718

Martha Rose Maris Kixmiller
19808 N Greenvview Dr
Sun City West, AZ, 85735
7016 1370 0000 0803 8725

Application of Matador Production Company for administrative approval for off-lease measurement and approval to surface commingle (lease commingle) oil and gas production from the spacing units comprised of the N/2 of Section 5 and the S/2 of Section 5, Township 24 South, Range 28 East, NMPM, Eddy County, New Mexico.

Mary Ann Webster Eichelberg
6506 NW Valleyview Street
Parkville, MO, 64152
7016 1370 0000 0803 9784

Mary Annette Hall
13200 South East 110th Street
Oklahoma City, OK 73165
7016 1370 0000 0803 9777

Mary Beth Guitar, Trustee of
the Mary Beth Guitar Trust
Unknown

Mary Florence Gudgen Chapman
1110 Valley Acres
Houston, TX, 77062
7016 1370 0000 0803 9760

Maryann Webster Eichelberg
6506 North West Valleyview Street
Parkville, MO 64152
7016 1370 0000 0803 9265

Melanie Mae Steesy Stewart
21 Glen Burnie Road
Palmyra, VA, 22963-3239
7016 1370 0000 0803 9272

Melissa McGee
P.O. Box 334
Buffalo Gap, TX 79508
7016 1370 0000 0803 9289

Michael Jeffrey Buckley
C/O David Aaron
River Grande Apt #2
Totolan, Panglao Island
Bohol, Philippines 6300

Michael Lee Harvey
12312 45th Avenue S E
Everett, WA, 98208
7016 1370 0000 0803 9296

Mo Oil, LLC
P.O. Box 429
Roswell, NM 88202
7016 1370 0000 0803 9302

MRC Permian Company
5400 LBJ Freeway
Suite 1500
Dallas, TX 75240
7016 1370 0000 0803 9319

Murchison-Guitar Family, LP
P.O. Box 712
Red Bluff, CA 96080
7016 1370 0000 0803 9326

Nancy J Stuessi Miles
10791 Sienna Dune Dr
South Jordan, UT, 84095
7016 1370 0000 0803 9333

Nancy Stuessi Morgan
813 Commodore Place
Fort Collins, CO 80525
7016 1370 0000 0803 9340

Nicole Stuessi Yates
11524 SE 221st Place
Kent, WA 98031
7016 1370 0000 0803 9357

Norma J Woehrman Trust dtd
9/22/10 - Trustee - Donald E Woeh
12209 Ridgeview Road
Kearney, MO 64060
7016 1370 0000 0803 9364

Owen Jones
11484 Cottonwood Hills Rd
Cashion, OK 73016
7016 1370 0000 0803 9371

Patrick William Harvey
13918 205th Avenue NE
Woodinville, WA 98077
7016 1370 0000 0803 9388

Paul B. Hofer, III and John M. Hofer,
Co-Trustees of the Laura Jean Hofer
Administrative Trust
11248 South Turner Ave.
Ontario, CA 91761
7016 1370 0000 0803 9395

Paul Shiftlet Pickard
949 Deer Drive NE
Albuquerque, NM 87122
7016 1370 0000 0803 9401

Paula Stacey LeBlanc
3056 Eastwood Terrace
The Villages, FL 32163
7016 1370 0000 0803 9418

PJC Limited Partnership
PO Box 1713
Roswell, NM 88202
7016 1370 0000 0803 9425

Polk Land & Minerals
1101 Butternut
Abilene, TX 79602
7016 1370 0000 0803 9432

Pressley H. Guitar
P.O. Box 5383
Abilene, TX 79608
7016 1370 0000 0803 9449

Prospector, LLC
P.O. Box 595
Loving, NM 88256
7016 1370 0000 0803 9456

Reed T Kimbley
PO Box 595
Loving, NM 88256
7016 1370 0000 0803 9463

Reid Stacey
127 SW Clay Street
Topeka, KS 66606
7016 1370 0000 0803 9470

Application of Matador Production Company for administrative approval for off-lease measurement and approval to surface commingle (lease commingle) oil and gas production from the spacing units comprised of the N/2 of Section 5 and the S/2 of Section 5, Township 24 South, Range 28 East, NMPM, Eddy County, New Mexico.

Richard Fitzgerald
4806 E 37th Place
Tulsa, OK 74135
7016 1370 0000 0803 9487

Riley Steesy
210 Iris Way
Ventura, CA 93004
7016 1370 0000 0803 9494

Robert Denny Pickard
417 Apple Ave.
Albertville, AL 35950
7016 1370 0000 0803 9500

Robert J. Bowen
19137 Cantrell Road
Linwood, KS 66052
7016 1370 0000 0803 9517

Robert K. Burgoine, Jr.
Unknown

Roger Davis Stuessi
19219 35th Place NE
Lake Forest Park, WA 98155
7016 1370 0000 0803 9524

Ronald Beyersdorf
1440 25th Street SE
Auburn, WA 98002-7830
7016 1370 0000 0803 9883

Ronnie Joe Fitzgerald Jr
11206 E. Brady St., Apt. 223
Tulsa, OK 74116
7016 1370 0000 0803 9876

Ross Duncan Properties, LLC
P. O. Box 647
Artesia, NM 88211
7016 1370 0000 0803 9869

Sally Guitar
10 Woodhaven Circle
Abilene, TX 79605
7016 1370 0000 0803 9852

Sharon Guitar Ellis
P.O. Box 105
Snoqualmie Wass, WA 98068
7016 1370 0000 0803 9845

Sherri D Griffith
420 N Eisenhower
Enid, OK 73703
7016 1370 0000 0803 9838

SP Johnson III & Barbara Jo
Johnson Trust
PO Box 1641
Roswell, NM 88202
7016 1370 0000 0803 9821

Steve Hodge
PO Box 3111
Rancho De Tao, NM 84557
7016 1370 0000 0803 9814

Susan Benting, Trustee of the
Benting Revocable Trust
1900 Richard Jones Road, Apt. P-3
Nashville, TN 37215
7016 1370 0000 0803 9807

Terri M Evans
P.O. Box 81
McKenna, WA 98558
7016 1370 0000 0803 9791

Thomas L. Striegler
618 Coutry Creek Lane
Fredricksburg, TX 78624
7016 1370 0000 0803 9982

The Ogden Living Trust
159 West Ogden Road
Loving, NM 88256
7016 1370 0000 0803 9975

Valdez Family 2006 Irrevocable Trust,
Jeanne C. Valdez, Tr
8844 W. Echo Lane
Peoria, AZ 85345
7016 1370 0000 0803 9968

Valerie J Hoffman
5330 W Ridge Road
Kansas City, MO 64133
7016 1370 0000 0803 9951

Velma E Brant, for the Estate of
Mary Alice Fitzgerald Dirkse
P O Box 261
Stroud, OK 74079-0261
7016 1370 0000 0803 9944

Virginia Nevill Hoff, Trustee of the
Virginia Nevill Hoff Management Trust
2601 Lakewood Circle
Tuscaloosa, AL 35405
7016 1370 0000 0803 9937

Walter N. Maris
16019 County Road 310
Savannah, MO 64484
7016 1370 0000 0803 9920

Walter Wesley Steesy
PO Box 299
Interlaken, NY 14847-0299
7016 1370 0000 0803 9913

Wende Witherspoon Morgan
1720 Southwicke
Flower Mound, TX 75022
7016 1370 0000 0803 9906

Wesley Everett Stuessi
3300 Kauai Court Apt. F5
Reno, NV 89509-4811
7016 1370 0000 0803 9890

Whitten Guitar Witherspoon
7524 Pear Tree Lane
Fort Worth, TX 76133
7016 1370 0000 0803 9616

Application of Matador Production Company for administrative approval for off-lease measurement and approval to surface commingle (lease commingle) oil and gas production from the spacing units comprised of the N/2 of Section 5 and the S/2 of Section 5, Township 24 South, Range 28 East, NMPM, Eddy County, New Mexico.

Wilbur L Motley
4718 Cindy Place
Midland, TX 79707
7016 1370 0000 0803 9609

William D Spaulding Revocable
Trust dtd 1/4/2008 William D
17736 Tulip Lane
Tinley Park, IL 60477
7016 1370 0000 0803 9593

Woods Dickens Ranch, LP
36 Surrey Square
Abilene, TX 79606
7016 1370 0000 0803 9586

Xplor Resources, LLC
1104 North Shore
Carlsbad, NM 88220
7016 1370 0000 0803 9579

Legal Notice

To: A G Tolbert Cooper and Margie A Cooper Trust, Trustees of the A.G. Tolbert Cooper and Margie A. Cooper Trust, Adam Jeffrey Hussain, his heirs or devisees, Aileen Johnson, Individually and as Executrix of the Estate of Robert L. Johnson, Jr., Deceased, her heirs or devisees, Alisa Ogden, her heirs or devisees, Amber Lyn Gentry, her heirs or devisees, Amy Abbott Walker, her heirs or devisees, Annette Hall, her heirs or devisees, Barbara Gudgen Bewley, her heirs or devisees, Barbara Lee Backman, Inc., Beth Cagle Webster, her heirs or devisees, Benting Revocable Trust, Susan Ogden Benting Trustee, her heirs or devisees, Bethany C Webster Okurowski, her heirs or devisees, Big Three Energy Group, LLC, Bonita Kaufman, her heirs or devisees, Brett Guitar Witherspoon, his heirs or devisees, Caren Gal Lucas, her heirs or devisees, Caren Gall Lucas, Trustee of the Caren Gall Lucas Exempt Trust, Carol L. Habig, her heirs or devisees, Carlsbad Irrigation District, Carol Stuessi Dyson, her heirs or devisees, Carolyn Ann Gilstrap, her heirs or devisees, Catherine Gall Parker, her heirs or devisees, Catherine Gall Parker and Craig Parker, Co-trustees of the Catherine Gall Parker Exempt Trust, Christy D Baker, her heirs or devisees, Covert Trust dtd 11/01/2010, Craig W Ogden, his heirs or devisees, Cynthia Ann Webster Ellis, her heirs or devisees, Daniel Craig, his heirs or devisees, Daniel Robert Harvey, his heirs or devisees, Daniel W. Gillespie, his heirs or devisees, Darlene Fitzgerald, her heirs or devisees, David Stuessi Gillespie, his heirs or devisees, David Thomas Webster, his heirs or devisees, Donald E. Woehrman, Trustee of the James R. Woehrman Trust UTA Dated 9-22-10, Donald E. Woehrman, Trustee of the Norma J. Woehrman Trust UTA Dated 9-22-10, Donnie Fitzgerald, his heirs or devisees, Donnie Ray Fitzgerald, his heirs or devisees, Ellen Stuessi Larkin, her heirs or devisees, Featherstone Development Corporation, Frank A. Myers, his heirs or devisees, Frederick J Stuessi, his heirs or devisees, Gayle N. Nicolay, Trustee of the Gayle N. Nicolay Revocable Trust, Gaylan Andrew Hussain, his heirs or devisees, Gordon Fitzgerald, his heirs or devisees, Gregg W Stuessi, his heirs or devisees, Guitar Galusha, LP, Guitar Land & Cattle, LP, Guy Pittman Witherspoon, III, Harvey R Striegler Jr, his heirs or devisees, Jack Francis Habig, Jr., his heirs or devisees, Jack G. Woods, Jr., his heirs or devisees, Jaime Cohen-Stacey, their heirs or devisees, James K. Gillespie, his heirs or devisees, James Minor Alexander, his heirs or devisees, James R Woehrman Trust dtd 9/22/10 - Trustee - Donald E Woeh James W. Witt, his heirs or devisees, Janice L. Stuessi, her heirs or devisees, Janice M Stuessi, her heirs or devisees, Jannette A Tyree, her heirs or devisees, Jeannette Stacey, her heirs or devisees, Jennifer Seltzer, her heirs or devisees, Jeri Alexander Lott, their heirs or devisees, Jeri Alexander Magnum and First Financial Trust and Asset Management, Trustees of the Jane Alexander Rhodes Revocable Trust, Joanne Johnson, her heirs or devisees, John Alexander Guitar and Margaret Ann Guitar, Trustees of the Earl B. Guitar, Jr. & Margaret Ann Guitar Revocable Trust, John Allen Fitzgerald, his heirs or devisees, John Guitar, his heirs or devisees, John Guitar Witherspoon, Jr, his heirs or devisees, John Lewis Maris Jr, his heirs or devisees, John Mark Pickard, his heirs or devisees, John T. Witt, his heirs or devisees, Joseph Fitzgerald, his heirs or devisees, Joshua M. Bowen, his heirs or devisees, JPH Holdings, L.P., JTV Partnership, Judith Ann Maris Sheldon,

EXHIBIT

7

her heirs or devisees, Judy Guitar Uhey, her heirs or devisees, Julie Sherar, her heirs or devisees, Hayden E Kimbley, their heirs or devisees, Irene M Harvey, her heirs or devisees, Daniel R Harvey, his heirs or devisees, John T Witt, his heirs or devisees, Karen Lenise Phillips, his heirs or devisees, Karen M Pickard-Lawson, her heirs or devisees, Karen Ogden Cortese, her heirs or devisees, Karl F. Myers, his heirs or devisees, Karl Richard Stacey, his heirs or devisees, Katherine Forest Stacey Baxter, her heirs or devisees, Keith Stuessi, his heirs or devisees, Kelli Arleen Stuessi Clifford, their heirs or devisees, Kelly Woods Leach, their heirs or devisees, Kevin Adam Stuessi, his heirs or devisees, Kimball Stacey, their heirs or devisees, Kimberley A. Woehrman, their heirs or devisees, Kristin Monaco, her heirs or devisees, Laplante/Johnson Fmly Tr, Joel S Johnson, Trustee, Laurel B Anderson Burgoine, her heirs or devisees, Laurel Jane Pickard, her heirs or devisees, Leslie Guitar Nichols, their heirs or devisees, Leslie David Guitar, their heirs or devisees, Linda Carol Burgoine Fiorillo, her heirs or devisees, Linda Farrell, heirs or devisees, Robert D. Pickard, his heirs or devisees, Lost Creek Royalties, LP, Louis Turner, their heirs or devisees, Maria Stuessi Foley, her heirs or devisees, Marlan Stacey, their heirs or devisees, Marcia A Nash, her heirs or devisees, Maria S Stuessi, her heirs or devisees, Martha Rose Maris Kixmiller, her heirs or devisees, Mary Ann Webster Eichelberg, her heirs or devisees, Mary Annette Hall, her heirs or devisees, Mary Beth Guitar, Trustee of the Mary Beth Guitar Trust, heirs or devisees, Mary Florence Gudgen Chapman, her heirs or devisees, Maryann Webster Eichelberg, her heirs or devisees, Melanie Mae Steesy Stewart, her heirs or devisees, Melissa McGee, her heirs or devisees, Michael Jeffrey Buckley his heirs or devisees, David Aaron, his heirs or devisees, Michael Lee Harvey, his heirs or devisees, Mo Oil, LLC, Murchison-Guitar Family, LP, Nancy J Stuessi Miles, her heirs or devisees, Nancy Stuessi Morgan, her heirs or devisees, Nicole Stuessi Yates, her heirs or devisees, Norma J Woehrman Trust dtd 9/22/10 - Trustee - Donald E Woeh, Owen Jones, his heirs or devisees, Patrick William Harvey, his heirs or devisees, Paul B. Hofer, III and John M. Hofer, Co-Trustees of the Laura Jean Hofer Administrative Trust, Paul Shiftlet Pickard, his heirs or devisees, Paula Stacey LeBlanc, her heirs or devisees, PJC Limited Partnership, Polk Land & Minerals, Pressley H. Guitar, his heirs or devisees, Prospector, LLC, Reed T Kimbley, his heirs or devisees, Reid Stacey, his heirs or devisees, Richard Fitzgerald, his heirs or devisees, Riley Steesy, their heirs or devisees, Robert Denny Pickard, Robert J. Bowen, his heirs or devisees, Robert K. Burgoine, Jr., his heirs or devisees, Roger Davis Stuessi, his heirs or devisees, Ronald Beyersdorf, his heirs or devisees, Ronnie Joe Fitzgerald Jr., his heirs or devisees, Ross Duncan Properties, LLC, Sally Guitar, her heirs or devisees, Sharon Guitar Ellis, her heirs or devisees, Sherri D Griffith, her heirs or devisees, SP Johnson III & Barbara Jo Johnson Trust, Steve Hodge, his heirs or devisees, Susan Benting, Trustee of the Benting Revocable Trust, Terri M Evans, her heirs or devisees, Thomas L. Striegler, his heirs or devisees, The Ogden Living Trust, Valdez Family 2006 Irrevocable Trust, Valerie J Hoffman, her heirs or devisees, Velma E Brant, for the Estate of Mary Alice Fitzgerald Dirkse, her heirs or devisees, Virginia Nevill Hoff, Trustee of the Virginia Nevill Hoff Management Trust, Walter N. Maris, his heirs or devisees, Walter Wesley Steesy, his heirs or

devisees, Wende Witherspoon Morgan, their heirs or devisees, Wesley Everett Stuessi, his heirs or devisees, Whitten Guitar Witherspoon, his heirs or devisees, Wilbur L Motley, his heirs or devisees, William D Spaulding Revocable Trust dtd 1/4/2008, Woods Dickens Ranch, LP, Xplor Resources, LLC, and any unknown person who has a mineral interest in the N/2 of Section 5 and the S/2 of Section 5, Township 24 South, Range 28 East, NMPM, Eddy County, New Mexico.

Application of Matador Production Company for administrative approval for off-lease measurement and approval to surface commingle (lease commingle) oil and gas production from *all existing and future wells* within the spacing units comprised of the N/2 of Section 5 and the S/2 of Section 5, Township 24 South, Range 28 East, NMPM, Eddy County, New Mexico. Pursuant to 19.15.12.10(C)(4)(g), Matador also seeks authority to commingle gas production into the Black River South Trunk Line from future leases with notice provided only to interest owners within future leases. Matador seeks approval to surface commingle oil and gas production at a common tank battery from the Culebra Bluff; Wolfcamp, South (Gas) Pool (Pool Code 75750)) for all existing and future wells at a surface facility located in the NE/4 SE/4 (Unit I) of Section 5. Any objection to this application must be filed in writing within twenty days from date of publication with the applicant and the New Mexico Oil Conservation Division, 1220 South St. Francis Drive, Santa Fe, New Mexico, 87505. If no objection is received within this twenty-day period, this application may be approved administratively by the Division. If you have any questions about this application, please contact Dana R. Arnold, 5400 LBJ Freeway, Suite 1500, Dallas, TX 75240, (972) 371-5284, darnold@matadorresources.com.

HOLLAND & HART ^{LLP}



Jordan L. Kessler

Associate

Phone (505) 988-4421

Fax (505) 983-6043

jlkessler@hollandhart.com

November 23, 2016

CERTIFIED MAIL
RETURN RECEIPT REQUESTED

TO: ALL AFFECTED PARTIES

Re: Application of Matador Production Company for administrative approval for off-lease measurement and approval to surface commingle (lease commingle) oil and gas production from the spacing units comprised of the N/2 of Section 5 and the S/2 of Section 5, Township 24 South, Range 28 East, NMPM, Eddy County, New Mexico.

Ladies and Gentlemen:

Enclosed is a copy of the above-referenced application which was filed with the New Mexico Oil Conservation Division on this date. Any objection to this application must be filed in writing within twenty days from this date at the Division's Santa Fe office located at 1220 South St. Francis Drive, Santa Fe, New Mexico, 87505. If no objection is received within this twenty-day period, this application may be approved administratively by the Division.

If you have any questions about this application, please contact the following:

Dana Arnold
Matador Production Company
972-371-5284
darnold@matadorresources.com

Sincerely,

Jordan L. Kessler
ATTORNEY FOR
MATADOR PRODUCTION COMPANY

Holland & Hart ^{LLP}

Phone (505) 988-4421 **Fax** (505) 983-6043 **www.hollandhart.com**

110 North Guadalupe Suite 1 Santa Fe, New Mexico 87501 **Mailing Address** P.O. Box 2208 Santa Fe, NM 87504-2208

Aspen Boulder Carson City Colorado Springs Denver Denver Tech Center Billings Boise Cheyenne Jackson Hole Las Vegas Reno Salt Lake City Santa Fe Washington, D.C. ☐

Production Summary Report

API: 30-015-43475

JIMMY KONE 05 24S 28E RB #203H

Printed On: Friday, November 04 2016

		Production					Injection				
Year	Pool	Month	Oil(BBLS)	Gas(MCF)	Water(BBLS)	Days P/I	Water(BBLS)	Co2(MCF)	Gas(MCF)	Other	Pressure
2016	[75750] CULEBRA BLUFF;WOLFCAMP,										
	SOUTH (GAS)	Aug	15627	148423	81356	24	0	0	0	0	0

40076 77630

Production Summary Report API: 30-015-43389 JIMMY KONE 05 24S 28E RB #208H Printed On: Friday, November 04 2016											
		Production					Injection				
Year	Pool	Month	Oil(BBLS)	Gas(MCF)	Water(BBLS)	Days P/I	Water(BBLS)	Co2(MCF)	Gas(MCF)	Other	Pressure
2016	[75750] CULEBRA BLUFF;WOLFCAMP, SOUTH (GAS)	May	17936	53182	117951	30	0	0	0	0	0
2016	[75750] CULEBRA BLUFF;WOLFCAMP, SOUTH (GAS)	Jun	22015	42655	59368	30	0	0	0	0	0
2016	[75750] CULEBRA BLUFF;WOLFCAMP, SOUTH (GAS)	Jul	15854	34298	42189	25	0	0	0	0	0
2016	[75750] CULEBRA BLUFF;WOLFCAMP, SOUTH (GAS)	Aug	11590	21691	25751	29	0	0	0	0	0

64m

83065 179415

Production Summary Report

API: 30-015-43542

JIMMY KONE 05 24S 28E RB #228H

Printed On: Friday, November 04 2016

		Production					Injection				
Year	Pool	Month	Oil(BBLS)	Gas(MCF)	Water(BBLS)	Days P/I	Water(BBLS)	Co2(MCF)	Gas(MCF)	Other	Pressure
2016	[75750] CULEBRA BLUFF;WOLFCAMP, SOUTH (GAS)	May	14428	157931	89051	28	0	0	0	0	0
2016	[75750] CULEBRA BLUFF;WOLFCAMP, SOUTH (GAS)	Jun	8444	113505	37253	20	0	0	0	0	0
2016	[75750] CULEBRA BLUFF;WOLFCAMP, SOUTH (GAS)	Jul	2918	38924	35774	12	0	0	0	0	0
2016	[75750] CULEBRA BLUFF;WOLFCAMP, SOUTH (GAS)	Aug	10622	127399	50605	31	0	0	0	0	0

C4m

43,766 643,091

McMillan, Michael, EMNRD

From: Jordan L. Kessler <JLKessler@hollandhart.com>
Sent: Wednesday, December 14, 2016 4:00 PM
To: McMillan, Michael, EMNRD
Subject: RE: Jimmy Kone surface commingle application

Mike, sorry for the delay: I was trying to confirm with Matador. The 203, 208 and 228 are all subject to the same compulsory pooling order (same spacing unit).

Thanks,
Jordan

From: McMillan, Michael, EMNRD [<mailto:Michael.McMillan@state.nm.us>]
Sent: Monday, December 12, 2016 10:57 AM
To: Jordan L. Kessler
Subject: RE: Jimmy Kone surface commingle application

Jordan:
Is the Jimmy Kone 05 24S 28E Well No. 208H the only well subject to compulsory pooling for this surface commingle application?
Thanks
Mike

From: McMillan, Michael, EMNRD
Sent: Monday, November 28, 2016 11:14 AM
To: 'Jordan L. Kessler' <JLKessler@hollandhart.com>
Subject: RE: Jimmy Kone surface commingle application

Thanks
Mike

From: Jordan L. Kessler [<mailto:JLKessler@hollandhart.com>]
Sent: Monday, November 28, 2016 11:13 AM
To: McMillan, Michael, EMNRD <Michael.McMillan@state.nm.us>
Subject: RE: Jimmy Kone surface commingle application

Mike, as you can see from the attached C-103 (also included with our application packet), the 228H was re-designated as Culebra Bluff; Wolfcamp, South (Gas) 75750.

From: McMillan, Michael, EMNRD [<mailto:Michael.McMillan@state.nm.us>]
Sent: Monday, November 28, 2016 10:48 AM
To: Jordan L. Kessler
Subject: RE: Jimmy Kone surface commingle application

The Jimmy Kone 05 24S28E RB Well No. 228H is dedicated to the Pierce Crossing; Wolfcamp NW (Gas) Pool is that correct?
Mike

From: McMillan, Michael, EMNRD
Sent: Monday, November 28, 2016 10:44 AM
To: Jordan Kessler <JLKessler@hollandhart.com>
Subject: Jimmy Kone surface commingle application

Jordan :
I received your surface commingle for the Jimmy Kone, Eddy County.
I need the following information
Last 6-month's monthly production
Cum production
Are these wells part of a compulsory pooling orders?
Thanks

MICHAEL A. MCMILLAN
Engineering Bureau, Oil Conservation Division
1220 south St. Francis Dr., Santa Fe NM 87505
O: 505.476.3448
Michael.McMillan@state.nm.us