

11/28/2016	SUSPENSE	MAm	11/30/2016	TYPE	PMAM162335722
------------	----------	-----	------------	------	---------------

ABOVE THIS LINE FOR DIVISION USE ONLY

NEW MEXICO OIL CONSERVATION DIVISION
- Engineering Bureau -
 1220 South St. Francis Drive, Santa Fe, NM 87505



ADMINISTRATIVE APPLICATION CHECKLIST

THIS CHECKLIST IS MANDATORY FOR ALL ADMINISTRATIVE APPLICATIONS FOR EXCEPTIONS TO DIVISION RULES AND REGULATIONS WHICH REQUIRE PROCESSING AT THE DIVISION LEVEL IN SANTA FE

Application Acronyms:

[NSL-Non-Standard Location] [NSP-Non-Standard Proration Unit] [SD-Simultaneous Dedication]
[DHC-Downhole Commingling] [CTB-Lease Commingling] [PLC-Pool/Lease Commingling]
[PC-Pool Commingling] [OLS - Off-Lease Storage] [OLM-Off-Lease Measurement]
[WFX-Waterflood Expansion] [PMX-Pressure Maintenance Expansion]
[SWD-Salt Water Disposal] [IPI-Injection Pressure Increase]
[EOR-Qualified Enhanced Oil Recovery Certification] [PPR-Positive Production Response]

[1] TYPE OF APPLICATION - Check Those Which Apply for [A]

- [A] Location - Spacing Unit - Simultaneous Dedication
☐ NSL ☐ NSP ☐ SD

Check One Only for [B] or [C]

- [B] Commingling - Storage - Measurement
☐ DHC ☒ CTB ☐ PLC ☐ PC ☒ OLS ☒ OLM

- [C] Injection - Disposal - Pressure Increase - Enhanced Oil Recovery
☐ WFX ☐ PMX ☐ SWD ☐ IPI ☐ EOR ☐ PPR

- [D] Other: Specify _____

[2] NOTIFICATION REQUIRED TO: - Check Those Which Apply, or Does Not Apply

- [A] ☒ Working, Royalty or Overriding Royalty Interest Owners
 [B] ☐ Offset Operators, Leaseholders or Surface Owner
 [C] ☒ Application is One Which Requires Published Legal Notice
 [D] ☐ Notification and/or Concurrent Approval by BLM or SLO
U.S. Bureau of Land Management - Commissioner of Public Lands, State Land Office
 [E] ☒ For all of the above, Proof of Notification or Publication is Attached, and/or,
 [F] ☐ Waivers are Attached

[3] SUBMIT ACCURATE AND COMPLETE INFORMATION REQUIRED TO PROCESS THE TYPE OF APPLICATION INDICATED ABOVE.

[4] CERTIFICATION: I hereby certify that the information submitted with this application for administrative approval is **accurate** and **complete** to the best of my knowledge. I also understand that **no action** will be taken on this application until the required information and notifications are submitted to the Division.

Note: Statement must be completed by an individual with managerial and/or supervisory capacity.

Jordan L. Kessler
 Print or Type Name

Signature

Attorney

Title

jlkessler@hollandhart.com

e-mail Address

Date

11/28/16

RECEIVED
 NOV 30 2016
 NEW MEXICO OIL CONSERVATION DIVISION

well
 -Charlie Sweeney
 3023528E#204
 30-015-43695
 -Jim Tom 20503
 3023528E#224
 PDU 30-015-4382
 -BLACK RIVER

-CTB 807
 -MATADOR Production Company
 228937

WOLF CAMP BASIN (GAS)

97442

HOLLAND & HART ^{LLP}



Jordan L. Kessler

Associate

Phone (505) 988-4421

Fax (505) 983-6043

jlkessler@hollandhart.com

November 28, 2016

VIA HAND DELIVERY

David Catanach
Oil Conservation Division
New Mexico Department of Energy,
Minerals and Natural Resources
1220 South Saint Francis Drive
Santa Fe, New Mexico 87505

Re: Application of Matador Production Company for administrative approval for off-lease measurement and approval to surface commingle (lease commingle) oil and gas production from the spacing units comprised of the W/2 of Section 30 and the W/2 of Section 31, Township 23 South, Range 28 East, NMPM, Eddy County, New Mexico.

Dear Mr. Catanach,

Matador Production Company (OGRID No. 228937) seeks administrative approval for off-lease measurement and approval to surface lease commingle oil and gas production from the Black River Wolfcamp East (Gas) Pool (Pool Code 97442) *from all existing and future wells and existing and future leases* drilled in the following areas of diverse ownership in Sections 30 and 31, Township 23 South, Range 28 East, NMPM, in Eddy County, New Mexico:

(a) The 320-acre standard spacing unit comprised of the W/2 of Section 30. This spacing unit is currently dedicated to the Jim Tom Lontos 30-23S-28E RB No. 221H Well (API No. 30-015-43826). This well will produce from the Black River Wolfcamp East (Gas) Pool (Pool Code 97442).

(b) The 320-acre standard spacing unit comprised of the W/2 of Section 31. This spacing unit is currently dedicated to the Charlie Sweeney 31-23S-28E RB No. 201H Well (API No. 30-015-43695). This well produces from Black River Wolfcamp East (Gas) Pool (Pool Code 97442).

Pursuant to NMAC 19.15.12.7, approved spacing units with diverse ownership are considered separate leases for surface commingling purposes. Matador seeks authority to surface commingle production according to the provisions of NMAC 19.15.12.10.C *from all existing and future wells* in these separate areas of diverse ownership at a surface facility (the "Facility") located in the NW/4 NW/4 (Lot 1) of Section 31. As illustrated on Exhibit 1, the Surface Pad (the "Surface Pad"), on which the wellheads are located is in the SW/4 SW/4 (Lot 4) of Section

Holland & Hart ^{LLP}

Phone (505) 988-4421 Fax (505) 983-6043 www.hollandhart.com

110 North Guadalupe Suite 1 Santa Fe, New Mexico 87501 Mailing Address P.O. Box 2208 Santa Fe, NM 87504-2208

Aspen Boulder Carson City Colorado Springs Denver Denver Tech Center Billings Boise Cheyenne Jackson Hole Las Vegas Reno Salt Lake City Santa Fe Washington, D.C. ☐



30. The Surface Pad is therefore not directly adjacent to the nearby Facility. Accordingly, out of an abundance of caution and pursuant to NMAC 19.15.23.9 and 19.15.12.9.B, Matador seeks permission for Off-Lease Measurement. Pursuant to 19.15.12.10(C)(4)(g), Matador also seeks authority to commingle production into the DLK Black River South Trunk Line from future leases with notice provided only to interest owners within future leases. Prior to commingling, gas production from each well will be separately metered using individual test separators with calibrated orifice meters that are manufactured to AGA specifications. Oil production from each well will also be separately metered using a turbine meter.

Exhibit 1 is a land plat showing Matador's current development and gathering system in the subject area. The plat identifies the wellbores, the spacing units, and the common surface facility located in the SW/4 SW/4 (Lot 4) of Section 30. The acreage in the W/2 of Section 30 is fee land, and the acreage in the W/2 of Section 31 is a combination of fee and state acreage.

Exhibit 2 is a completed Application for Surface Commingling (Diverse Ownership) and Off-Lease Measurement Form C-107-B with attachments.

Exhibit 3 is an in depth engineering explanation of Matador's commingling process.

Exhibit 4 is a C-102 for each of the current wells drilled and planned within the existing spacing units.

Exhibit 5 is a diagram of the surface facilities.

Exhibit 6 is a list of the interests affected by this request for approval to off-lease measure and surface commingle oil and gas production. A copy of this application with all attachments has been sent by certified mail to all affected parties advising them that if they have an objection they must file it in writing with the division within 20 days from the date the division receives Matador's application.

Exhibit 7 is a notice of publication directed to unlocatable parties.

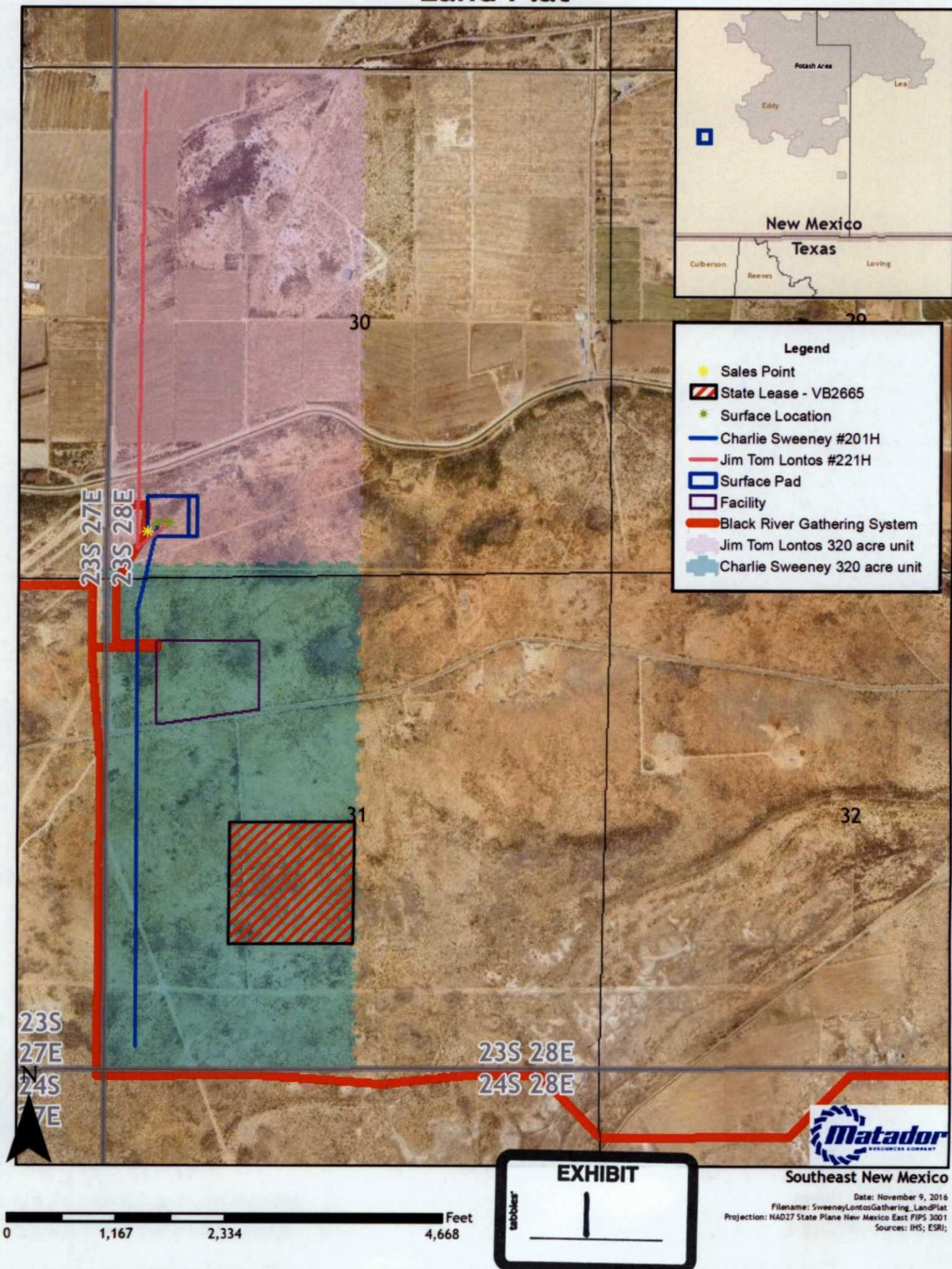
Your attention to this matter is appreciated.

Sincerely,

Jordan L. Kessler

**ATTORNEY FOR
MATADOR PRODUCTION COMPANY**

Jim Tom Lontos / Charlie Sweeney Land Plat



District I
1625 N. French Drive, Hobbs, NM 88240
District II
811 S. First St., Artesia, NM 88210
District III
1000 Rio Brazos Road, Aztec, NM 87410
District IV
1220 S. St Francis Dr, Santa Fe, NM
87505

State of New Mexico
Energy, Minerals and Natural Resources Department

Form C-107-B
Revised August 1, 2011

OIL CONSERVATION DIVISION
1220 S. St Francis Drive
Santa Fe, New Mexico 87505

Submit the original
application to the Santa Fe
office with one copy to the
appropriate District Office.

APPLICATION FOR SURFACE COMMINGLING (DIVERSE OWNERSHIP)

OPERATOR NAME: Matador Production Company
OPERATOR ADDRESS: 5400 I.BJ Freeway Tower I Suite 1500 Dallas, TX 75240
APPLICATION TYPE:

☐ Pool Commingling ☒ Lease Commingling ☐ Pool and Lease Commingling ☐ Off-Lease Storage and Measurement (Only if not Surface Commingling)

LEASE TYPE: ☒ Fee ☒ State ☐ Federal

Is this an Amendment to existing Order? ☐ Yes ☒ No If "Yes", please include the appropriate Order No. _____
Have the Bureau of Land Management (BLM) and State Land office (SLO) been notified in writing of the proposed commingling
☒ Yes ☐ No

(A) POOL COMMINGLING
Please attach sheets with the following information

(1) Pool Names and Codes	Gravities / BTU of Non-Commingled Production	Calculated Gravities / BTU of Commingled Production		Calculated Value of Commingled Production	Volumes
BLACK RIVER; WOLFCAMP, EAST (G) CODE: 97442					

- (2) Are any wells producing at top allowables? ☐ Yes ☒ No
(3) Has all interest owners been notified by certified mail of the proposed commingling? ☒ Yes ☐ No.
(4) Measurement type: ☒ Metering ☐ Other (Specify)
(5) Will commingling decrease the value of production? ☐ Yes ☒ No If "yes", describe why commingling should be approved

(B) LEASE COMMINGLING
Please attach sheets with the following information

- (1) Pool Name and Code- BLACK RIVER; WOLFCAMP, EAST (G) Code: 97442
(Gas)
(2) Is all production from same source of supply? ☒ Yes ☐ No
(3) Has all interest owners been notified by certified mail of the proposed commingling? ☒ Yes ☐ No
(4) Measurement type: ☒ Metering ☐ Other (Specify)

(C) POOL and LEASE COMMINGLING
Please attach sheets with the following information

- (1) Complete Sections A and E.

(D) OFF-LEASE STORAGE and MEASUREMENT
Please attached sheets with the following information

- (1) Is all production from same source of supply? ☒ Yes ☐ No
(2) Include proof of notice to all interest owners.

(E) ADDITIONAL INFORMATION (for all application types)
Please attach sheets with the following information

- (1) A schematic diagram of facility, including legal location.
(2) A plat with lease boundaries showing all well and facility locations. Include lease numbers if Federal or State lands are involved.
(3) Lease Names, Lease and Well Numbers, and API Numbers.

I hereby certify that the information above is true and complete to the best of my knowledge and belief.

SIGNATURE: [Signature] TITLE: Senior Production Engineer DATE: 11/22/16

TYPE OR PRINT NAME: John Romano TELEPHONE NO.: (972) 371-5245

E-MAIL ADDRESS: jromano@matadorresources.com

EXHIBIT

2



September 28, 2016

FESCO, Ltd.
1100 Fesco Ave. - Alice, Texas 78332

For: Matador Production Company
One Lincoln Centre
5400 LBJ Freeway, Suite 1500
Dallas, Texas 75240

Sample: Charlie Sweeney 31 23 28 RB No. 201H
First Stage Separator
Spot Gas Sample @ 350 psig & 110 °F

Date Sampled: 09/22/2016

Job Number: 63251.001

CHROMATOGRAPH EXTENDED ANALYSIS - GPA 2286

COMPONENT	MOL%	GPM
Hydrogen Sulfide*	< 0.001	
Nitrogen	0.085	
Carbon Dioxide	0.080	
Methane	93.125	
Ethane	4.022	1.072
Propane	1.136	0.312
Isobutane	0.360	0.117
n-Butane	0.274	0.086
2-2 Dimethylpropane	0.017	0.006
Isopentane	0.185	0.067
n-Pentane	0.107	0.039
Hexanes	0.257	0.106
Heptanes Plus	<u>0.352</u>	<u>0.145</u>
Totals	100.000	1.951

Computed Real Characteristics Of Heptanes Plus:

Specific Gravity ----- 3.398 (Air=1)
Molecular Weight ----- 98.17
Gross Heating Value ----- 5086 BTU/CF

Computed Real Characteristics Of Total Sample:

Specific Gravity ----- 0.618 (Air=1)
Compressibility (Z) ----- 0.9974
Molecular Weight ----- 17.87
Gross Heating Value
Dry Basis ----- 1103 BTU/CF
Saturated Basis ----- 1084 BTU/CF

*Hydrogen Sulfide tested on location by: Stain Tube Method (GPA 2377)
<0.013 Gr/100 CF, <0.2 PPMV or <0.001 Mol %

Base Conditions: 14.650 PSI & 60 Deg F

Sampled By: (24) Amiot
Analyst: MR
Processor: NG
Cylinder ID: T-3725

Certified: FESCO, Ltd. - Alice, Texas

David Dannhaus 361-661-7015

**CHROMATOGRAPH EXTENDED ANALYSIS - GPA 2286
TOTAL REPORT**

COMPONENT	MOL %	GPM	WT %
Hydrogen Sulfide*	< 0.001		< 0.001
Nitrogen	0.085		0.133
Carbon Dioxide	0.080		0.197
Methane	93.125		83.612
Ethane	4.022	1.072	6.769
Propane	1.136	0.312	2.804
Isobutane	0.360	0.117	1.171
n-Butane	0.274	0.086	0.891
2,2 Dimethylpropane	0.017	0.006	0.069
Isopentane	0.185	0.067	0.747
n-Pentane	0.107	0.039	0.432
2,2 Dimethylbutane	0.004	0.002	0.019
Cyclopentane	0.000	0.000	0.000
2,3 Dimethylbutane	0.026	0.011	0.125
2 Methylpentane	0.078	0.032	0.376
3 Methylpentane	0.042	0.017	0.203
n-Hexane	0.107	0.044	0.516
Methylcyclopentane	0.048	0.016	0.226
Benzene	0.007	0.002	0.031
Cyclohexane	0.054	0.018	0.254
2-Methylhexane	0.014	0.006	0.079
3-Methylhexane	0.015	0.007	0.084
2,2,4 Trimethylpentane	0.000	0.000	0.000
Other C7's	0.042	0.018	0.233
n-Heptane	0.034	0.016	0.191
Methylcyclohexane	0.048	0.019	0.264
Toluene	0.009	0.003	0.046
Other C8's	0.041	0.019	0.253
n-Octane	0.012	0.006	0.077
Ethylbenzene	0.001	0.000	0.006
M & P Xylenes	0.004	0.002	0.024
O-Xylene	0.001	0.000	0.006
Other C9's	0.013	0.007	0.092
n-Nonane	0.003	0.002	0.022
Other C10's	0.004	0.002	0.032
n-Decane	0.001	0.001	0.008
Undecanes (11)	<u>0.001</u>	<u>0.001</u>	<u>0.008</u>
Totals	100.000	1.951	100.000

Computed Real Characteristics Of Total Sample:

Specific Gravity -----	0.618	(Air=1)
Compressibility (Z) -----	0.9974	
Molecular Weight -----	17.87	
Gross Heating Value		
Dry Basis -----	1103	BTU/CF
Saturated Basis -----	1084	BTU/CF

Matador Production Company

One Lincoln Centre • 5400 LBJ Freeway • Suite 1500 • Dallas, Texas 75240

Voice 972.371.5245 • Fax 972.371.5201

jromano@matadorresources.com

John L. Romano
Senior Production Engineer

November 3, 2016

New Mexico Oil Conservation Division
1220 South St. Francis Drive
Santa Fe, NM 87505

Re: Application of Matador Production Company for administrative approval for off-lease measurement and approval to surface commingle (lease commingle) gas and oil production from the spacing units comprised of the W/2 of Section 30, the W/2 of Section 31, Township 23 South, Range 28 East, NMPM, Eddy County, New Mexico (the "Lands")

To Whom This May Concern,

Matador Production Company ("Matador"), OGRID: 228937, requests to commingle current gas production from two (2) distinct wells located on the Lands and future production from the Lands as described herein.. Both wells will be metered through a test separator with an oil turbine meter. The gas commingling will occur after individual measurement at each well. Gas exiting each well test flows into one gathering lines, as depicted on **Exhibit A**, the DLK Black River South Trunk Line. Each well on the Lands will have its own test separator with an orifice meter manufactured and assembled in accordance with American Gas Association (AGA) specifications. All primary and secondary Electronic Flow Measurement (EFM) equipment is tested and calibrated by a reputable third party measurement company in accordance with industry specifications.

The orifice meter is the preferred measurement device utilized by midstream and E&P companies in the natural gas business. The gas samples are obtained at the time of the meter testing/calibration and the composition and heating value are determined by a laboratory in accordance with American Petroleum Institute (API) specifications to ensure accurate volume and Energy (MMBTU) determinations. See example from Fesco Laboratory attached as **Exhibit B** hereto.

The flow stream from each wellhead is demonstrated in the Process Flow Diagram (PFD) attached as **Exhibit A** hereto. The PFD shows that the water, oil, and gas leave the wellbore and flow into a wellhead test separator which separates the oil, gas, and water. The oil is measured via turbine meter which is calibrated periodically by a third party measurement company for accuracy. The gas is measured on a volume and MMBTU basis by an orifice meter and supporting EFM equipment in accordance with American Petroleum Association (API) Chapter 21.1. The gas is then sent into a gathering line where it is commingled with each of the other wells' metered gas. The gathering line gas is then metered by another orifice meter at the tank battery check to show

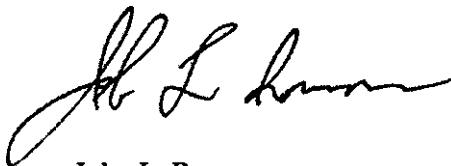


the total volume of gas leaving the Tank Battery. This meter is tested and calibrated in accordance with industry specifications and volume and energy are determined on an hourly, daily, and monthly basis. Once the gas exits this final tank battery sales check it travels directly into a third party sales connect meter. The El Paso Gas Pipeline has its own orifice meter that measures the gas for custody transfer. These meters are also calibrated periodically to ensure the measurement accuracy.

In conclusion, all the oil and gas produced on the Lands is and will be metered at each wellhead and allocated correctly using the same measurement equipment as the pipeline sales measurement specifications accepted by API as industry standard.

Very truly yours,

MATADOR PRODUCTION COMPANY

A handwritten signature in black ink, appearing to read "John L. Romano". The signature is fluid and cursive, with a large initial "J" and "L".

John L. Romano
Production Engineer

District I
1625 N French Dr., Hobbs, NM 88240
Phone: (575) 393-6161 Fax: (575) 393-0720
District II
811 S. First St., Artesia, NM 88210
Phone: (575) 748-1283 Fax: (575) 748-9720
District III
1000 Rio Brazos Road, Aztec, NM 87410
Phone: (505) 334-6178 Fax: (505) 334-6170
District IV
1220 S. St. Francis Dr., Santa Fe, NM 87505
Phone: (505) 476-3460 Fax: (505) 476-3462

State of New Mexico
Energy, Minerals & Natural Resources
Department
OIL CONSERVATION DIVISION
1220 South St. Francis Dr.
Santa Fe, NM 87505

FORM C-102
Revised August 1, 2011
Submit one copy to appropriate
District Office

☐ AMENDED REPORT

WELL LOCATION AND ACREAGE DEDICATION PLAT

¹ API Number 30-015-43695	² Pool Code 97442	³ Pool Name Black River Wolfcamp East (Gas)
⁴ Property Code 318071	⁵ Property Name CHARLIE SWEENEY 31-23S-28E RB	⁶ Well Number #201H
⁷ OGRIID No. 228437	⁸ Operator Name MATADOR PRODUCTION COMPANY	⁹ Elevation 3117'

¹⁰ Surface Location									
UL or lot no.	Section	Township	Range	Lot Idn	Feet from the	North/South line	Feet from the	East/West line	County
4	30	23-S	28-E	-	492'	SOUTH	497'	WEST	EDDY

UL or lot no.	Section	Township	Range	Lot Idn	Feet from the	North/South line	Feet from the	East/West line	County
4	31	23-S	28-E	-	240'	SOUTH	330'	WEST	EDDY
¹¹ Dedicated Acres 320	¹² Joint or Infill	¹³ Consolidation Code	¹⁴ Order No.						

No allowable will be assigned to this completion until all interests have been consolidated or a non-standard unit has been approved by the division.

	SURFACE LOCATION NEW MEXICO EAST NAD 1927 X=581848 Y=462027 LAT.: N 32.2700893 LONG.: W 104.1332310 NAD 1983 X=603031 Y=462085 LAT.: N 32.2701895 LONG.: W 104.1337272 ELEV = 3117'	¹⁷OPERATOR CERTIFICATION I hereby certify that the information contained herein is true and complete to the best of my knowledge and belief, and that this organization either owns a working interest or undivided mineral interest in the land underlying the proposed well location or has a right to drill this well of this location pursuant to a contract with an owner of such a mineral or working interest, or to a voluntary pooling agreement or a compulsory pooling order heretofore entered by the division. <i>Chris Carleton</i> 3/30/16 Signature Date Chris Carleton Printed Name ccarter@matadorresources.com E-mail Address
	FIRST PERFORATION POINT NEW MEXICO EAST NAD 1927 X=581677 Y=461205 LAT.: N 32.2678112 LONG.: W 104.1337888 NAD 1983 X=602880 Y=461284 LAT.: N 32.2679314 LONG.: W 104.1342847	¹⁸SURVEYOR CERTIFICATION I hereby certify that the well location shown on this plat was plotted from field notes of actual surveys made by me or under my supervision, and that the same is true to the best of my belief. 11/24/2015 Date of Survey Signature and Seal Certificate Number
	LAST PERFORATION POINT NEW MEXICO EAST NAD 1927 X=581842 Y=458550 LAT.: N 32.2550149 LONG.: W 104.1339303 NAD 1983 X=602825 Y=458608 LAT.: N 32.2551351 LONG.: W 104.1344268	BOTTOM HOLE LOCATION NEW MEXICO EAST NAD 1927 X=581842 Y=458460 LAT.: N 32.2547875 LONG.: W 104.1339330 NAD 1983 X=602824 Y=458518 LAT.: N 32.2548877 LONG.: W 104.1344267

\\SURVEY\MATADOR_RESOURCES\CHARLIE_SWEENEY_31-23S-28E_RB_2814P\DATA_PRODUCT\FILE_CHARLIE_SWEENEY_31-23S-28E_RB_2814.DWG 11/24/2015 4:50:33 PM jplouffe



District I
1633 N. French Dr., Hobbs, NM 88240
Phone: (575) 393-6161 Fax: (575) 393-0720
District II
811 S. Park St., Artesia, NM 88210
Phone: (575) 748-1283 Fax: (575) 748-9720
District III
1000 Rio Brazos Road, Aztec, NM 87410
Phone: (505) 334-6178 Fax: (505) 334-6170
District IV
1220 S. St. Francis Dr., Santa Fe, NM 87505
Phone: (505) 476-3460 Fax: (505) 476-3462

State of New Mexico
Energy, Minerals & Natural Resources
Department
OIL CONSERVATION DIVISION
1220 South St. Francis Dr.
Santa Fe, NM 87505

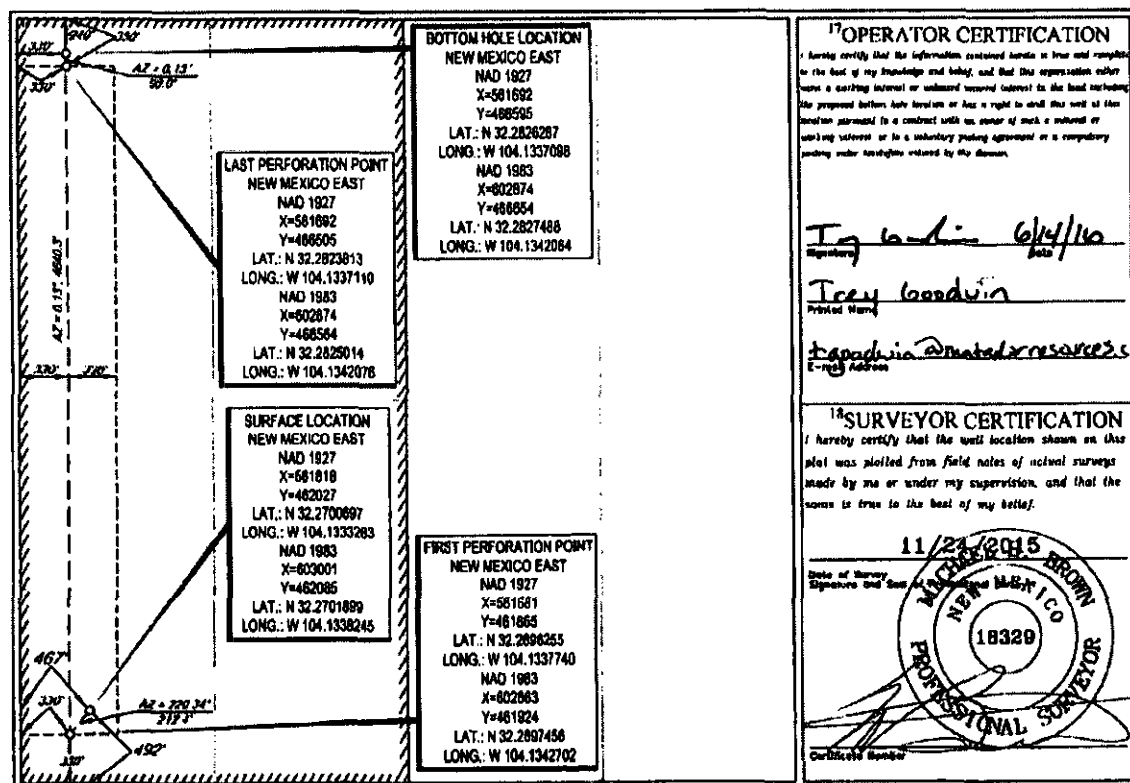
FORM C-102
Revised August 1, 2011
Submit one copy to appropriate
District Office

☐ AMENDED REPORT

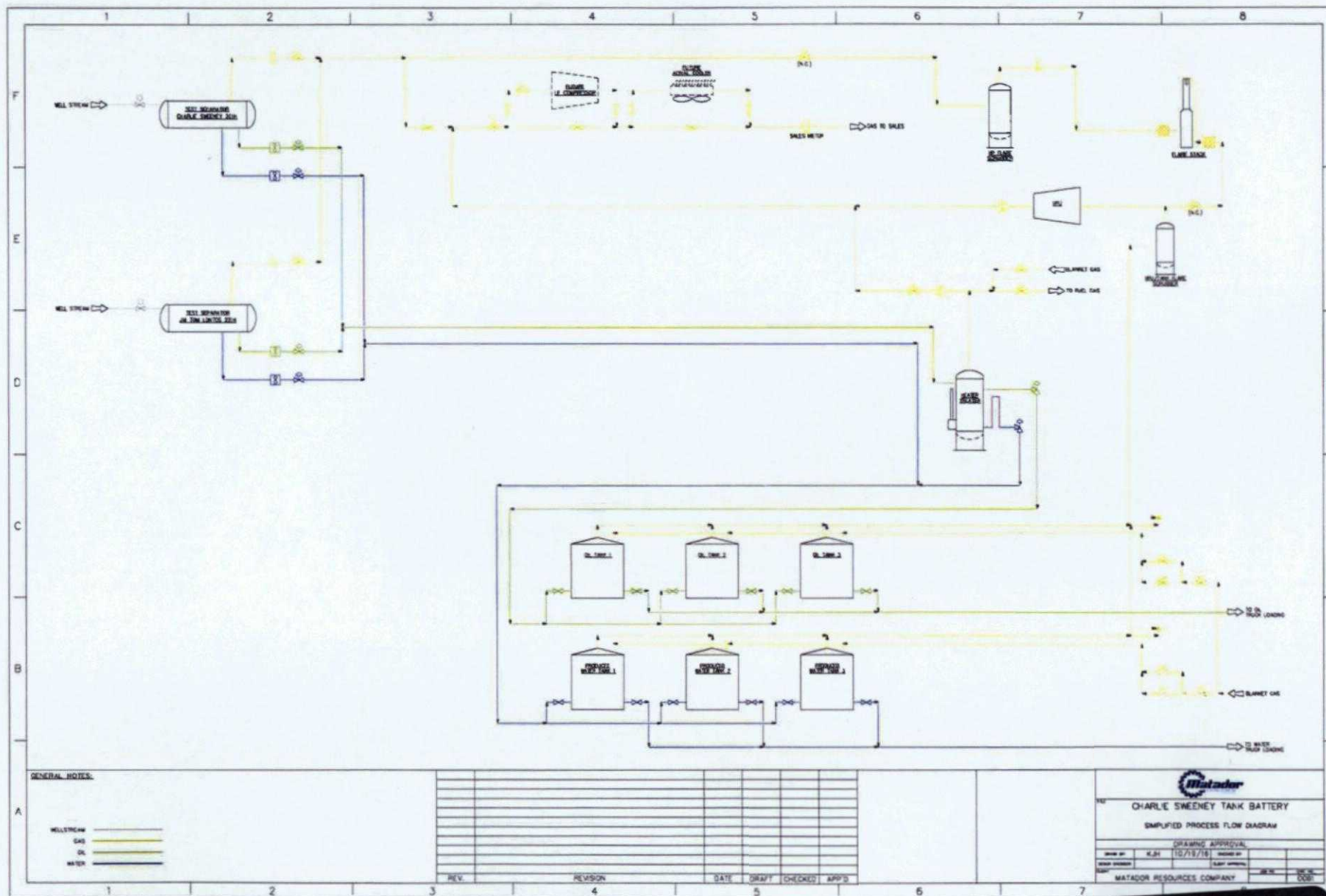
WELL LOCATION AND ACREAGE DEDICATION PLAT

1 APT Number 30-015-43826		2 Pool Code 97442		3 Pool Name BLACK RIVER; WOLFCAMP EAST (G)		
4 Property Code 318333		5 Property Name JIM TOM LONTOS 30-23S-28E RB			6 Well Number #221H	
7 OGRID No. 228937		8 Operator Name MATADOR PRODUCTION COMPANY			9 Elevation 3117'	
10 Surface Location						
UL or lot no. 4	Section 30	Township 23-S	Range 28-E	Lot Id -	Feet from the 492'	North/South line SOUTH
					Feet from the 467'	East/West line WEST
						County EDDY
UL or lot no. 1	Section 30	Township 23-S	Range 28-E	Lot Id -	Feet from the 240'	North/South line NORTH
					Feet from the 330'	East/West line WEST
						County EDDY
11 Dedicated Acres 318.94		12 Joint or Infill		13 Consolidation Code		14 Order No. R-14197

No allowable will be assigned to this completion until all interests have been consolidated or a non-standard unit has been approved by the division.



C:\SURVEY\MATADOR_RESOURCE\30-23S-28E RB 27110-004 PRODUCT\340_300_300\TOMTOS_30-23S-24E RB 27110-004\007_1102015_30-23S-24E RB.mxd



PLOT TIME: October 15, 2016 9:56 PM

BY: KENNETH HOFFFAUR

FILE PATH: C:\USERS\KENNETH\HOFFFAUR\DESKTOP\CHARLES SWEENEY PFD.DWG



Application of Matador¹ Production Company for administrative approval for off-lease measurement and approval to surface commingle (lease commingle) oil and gas production from the spacing units comprised of the W/2 of Section 30 and the W/2 of Section 31, Township 23 South, Range 28 East, NMPM, Eddy County, New Mexico.

Mo Oil, LLC
P.O. Box 429
Roswell, NM 88202
7015 0640 0001 7532 3389

David M. Fritschy
603 Elora Drive
Carlsbad, NM 88220
7015 0640 0001 7531 8613

Kelli J. Brant
29832 SE Hwy 212
Boring, OR 97009
7015 0640 0001 7531 8606

Patricia B. Schenk
14615 Crescent Valley Dr.
Gig Harbor, WA 98332-9712
7015 0640 0001 7531 8590

Danny Boyd Bailey
9102 Windward Trace
San Antonio, TX 78254
7015 0640 0001 7531 8170

Terese Harkey Klesel
10002 U.S. Hwy 77N
Schulenburg, TX 78956
7015 0640 0001 7531 8163

Corbett Dee Harkey
602 Hengst Rd.
Port Lavaca, TX 77979
7015 0640 0001 7531 8156

Evalyn S. Stephens, Trustee of the
Evalyn S. Stephens Trust, dated
November 12, 1996
251 Carolina Dr., #10-C
Tryon, NC 28782
7015 0640 0001 7531 8149

Linda K. Fritschy
4908 Gulfstream Dr.
Dallas, TX 75244
7015 0640 0001 7531 8132

Sterling Lafayette Bailey, Jr.
1610 Winding Canyon Ct.
Katy, TX 77493
7015 0640 0001 7531 8125

Derek K. Brown
17965 Portland Ave.
Milwaukie, OR 97267
7015 0640 0001 7531 8118

Sandra Louise White
72 S. River Rd.
Cuero, TX 77954
7015 0640 0001 7531 8101

Eugene P. Burkholder
900 W. Joy Dr.
Anthony, NM 88021
7015 0640 0001 7531 8095

Calvin Spencer Bingham III, as Trustee
of the Calvin Spencer Bingham
Testamentary Trust "A"
1516 Monte Vista
Alice, TX 78332
7015 0640 0001 7531 8088

Stefani Bryla Pauley Johnston
319 Green Gable Dr.
Victoria, TX 77904
7015 0640 0001 7531 8071

Danny Boyd Bailey and Sterling L.
Bailey, Jr., as Co-Trustees of the
Kathryn Harkey Bailey Trust
9102 Windward Trace
San Antonio, TX 78254
7015 0640 0001 7531 8064

State of New Mexico
PO Box 1148
Santa Fe, NM 87504-1148
7015 0640 0001 7531 8057

MRC Permian Company
5400 LBJ Freeway, Ste 1500
Dallas, TX 75240
7015 0640 0001 7532 4416

Gayle N. Nicolay Rev. Trust
5528 Tahoe Lane
Fairway, Kansas 66205
7015 0640 0001 7532 4409

Virginia Nevill Hoff Mgmt. Trust
2601 Lakewood Circle
Tuscaloosa, AL 35405
7015 0640 0001 7532 4393

Guy P. Witherspoon, III
P.O. Box 100403
Fort Worth, TX 76185
7015 0640 0001 7532 3587

John Guitar Witherspoon
7407 Lemonwood Drive
Fort Worth, TX 76133
7015 0640 0001 7532 3570

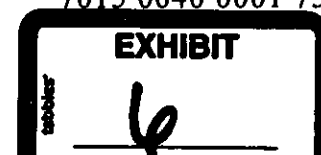
Whitten Guitar Witherspoon
7524 Pear Tree Lane
Fort Worth, TX 76133
7015 0640 0001 7532 3563

Brett Guitar Witherspoon
P.O. Box 100635
Fort Worth, TX 76185
7015 0640 0001 7532 3556

Wende Witherspoon Morgan
1720 Southwicke
Flower Mound, Texas 75022
7015 0640 0001 7532 3549

Pressley H. Guitar
P.O. Box 5383
Abilene, TX 79608
7015 0640 0001 7532 3532

Kelly Woods Leach
312 Greatview Circle
Birmingham, AL 35226
7015 0640 0001 7532 3525



Application of Matador Production Company for administrative approval for off-lease measurement and approval to surface commingle (lease commingle) oil and gas production from the spacing units comprised of the W/2 of Section 30 and the W/2 of Section 31, Township 23 South, Range 28 East, NMPM, Eddy County, New Mexico.

Catherine Gall Parker, ssp
3721 Pallos Verdas
Dallas, TX 75229
7015 0640 0001 7532 3518

Caren Gall Lucas
P.O. Box 90621
Austin, TX 78709-0621
7015 0640 0001 7532 3501

Jack G. Woods, Jr.
P.O. Box 341342
Austin, TX 78734
7015 0640 0001 7532 3495

Catherine Gall Parker and Craig
Parker, Co-Trustees of the Catherine
Gall Parker Exempt Trust
3721 Pallos Verdas
Dallas, TX 75229
7015 0640 0001 7532 4386

Caren Gall Lucas, Trustee of the
Caren Gall Lucas Exempt Trust
P.O. Box 90621
Austin, TX 78709-0621
7015 0640 0001 7532 4379

Catherine Gall Parker and Craig
Parker, Co-Trustees of the Gall
Credit Shelter Trust
3721 Pallos Verdas
Dallas, TX 75229
7015 0640 0001 7532 4362

Laura Jean Hofer Trust
11248 South Turner Ave.
Ontario, CA 91761
7015 0640 0001 7532 4355

Murchison-Guitar Family, LP
P.O. Box 712
Red Bluff, CA 96080
7015 0640 0001 7532 4348

Barbara Lee Backman, Inc.
1516 W. Riverside Ave.
Spokane, WA 99201
7015 0640 0001 7532 4331

Sally Guitar
10 Woodhaven Circle
Abilene, TX 79605
7015 0640 0001 7532 4324

Judy Guitar Uhey
P.O. Box 632
Elizabethtown, KY 42702
7015 0640 0001 7532 4317

Sharon Guitar Ellis
P.O. Box 105
Snoqualmie Pass, WA 98068
7015 0640 0001 7532 3709

Melissa McGee
P.O. Box 334
Buffalo Gap, TX 79508
7015 0640 0001 7532 3693

Guitar Galusha, L.P.
P.O. Box 1438
Abilene, TX 79604
7015 0640 0001 7532 3488

John Guitar
P.O. Box 1121
Clyde, TX 79510
7015 0640 0001 7532 3471

Leslie Guitar Nichols
P.O. Box 327
Big Spring, TX 79721
7015 0640 0001 7532 3464

Leslie David Guitar
P.O. Box 2228
Brownwood, TX 76804
7015 0640 0001 7532 3457

Polk Land & Minerals
1101 Butternut
Abilene, TX 79602
7015 0640 0001 7532 3440

JPH Holdings, L.P.
4400 Arcady
Dallas, TX 75205
7015 0640 0001 7532 3433

CrownRock Minerals
P.O. Box 52267
Midland, Texas 79710
7015 0640 0001 7532 3426

James Minor Alexander
P.O. Box 58
Abilene, TX 79604
7015 0640 0001 7532 3419

Jeri Alexander Lott
9209 York Place
Lubbock, TX 79424
7015 0640 0001 7532 3402

Jane Alexander Rhodes Estate James M.
Alexander & Jeri Mangum, Ind. Executors
First Financial Trust & Asset Management
Company
P.O. Box 701
Abilene, TX 76904
7015 0640 0001 7532 3396

Earl B. Guitar, Jr. and Margaret Ann Guitar,
Trustees of the Earl B. Guitar, Jr. and
Margaret Ann Guitar Revocable Trust
P.O. Box 748
Abilene, TX 79604
7015 0640 0001 7532 3686

Guitar Land & Cattle, LP
P.O. Box 2213
Abilene, TX 79604
7015 0640 0001 7532 3679

Mallard Royalty Partners, LP
P.O. Box 52267
Midland, TX 79710
7015 0640 0001 7532 3662

Santa Elena Minerals, LP
P.O. Box 2063
Midland, TX 79702
7015 0640 0001 7532 3655

Application of Matador Production Company for administrative approval for off-lease measurement and approval to surface commingle (lease commingle) oil and gas production from the spacing units comprised of the W/2 of Section 30 and the W/2 of Section 31, Township 23 South, Range 28 East, NMPM, Eddy County, New Mexico.

Woods Dickens Ranch, LP
36 Surrey Square
Abilene, TX 79606
7015 0640 0001 7532 3648

Pardue Limited Company
P.O. Box 2018
Carlsbad, NM 88221
7015 0640 0001 7532 3631

James Edward Brown
PO Box 14943
Odessa, TX 79768
7015 0640 0001 7532 3624

Marjorie H Tipton, Individually &
Executrix of Estate
14320 Tandem Blvd., Apt #1102
Austin, TX 78728
7015 0640 0001 7532 3617

Holly Chadwick
2035 Oakridge Parkway South
Terre Haute, IN 47802
7015 0640 0001 7532 3600

Shelby Chadwick
2035 Oakridge Parkway South
Terre Haute, IN 47802
7015 0640 0001 7532 3594

Rachel Chadwick
2035 Oakridge Parkway South
Terre Haute, IN 47802
7016 2070 0000 4815 2603

Bonnie Wood
3509 Golder Avenue
Odessa, TX 79702
7016 2070 0000 4815 2597

Lynda Coursey
P. O. Box 411
Pyote, TX 79777-0411
7016 2070 0000 4815 2580

Jennifer Vaughn
1208 Angel Springs Drive
Leander, TX 78641
7016 2070 0000 4815 2573

John Scott Fausett
206 E 2nd Street
Monahans, TX 79756
7016 2070 0000 4815 2566

Garlon King
789 Scissortail Lane
Fort Stockton, TX 79735
7016 2070 0000 4815 2559

Devin King
789 Scissortail Lane
Fort Stockton, TX 79735
7016 2070 0000 4815 2542

Melissa King
789 Scissortail Lane
Fort Stockton, TX 79735
7016 2070 0000 4815 2535

Chad King
PO Box 1743
Midland, TX 79702
7016 2070 0000 4815 2528

Atenna King
105 S Sage Street
Fort Stockton, TX 79735
7016 2070 0000 4815 2511

Kimberly J McMurley
3401 NW 20th Street
Coconut Creek, FL 33066
7016 2070 0000 4815 2702

Brian Small
84 Crickelwood
Henderson, NV 89002
7016 2070 0000 4815 2696

Annita June Small Parker
1306 Pecan Drive
Weatherford, TX 76086
7016 2070 0000 4815 2689

Clint Small
155 Manganese
Henderson, NV 89015
7016 2070 0000 4815 2672

Trevor S Turmelle
17621 Arratia
El Paso, TX 79938
7016 2070 0000 4815 2665

Wolfcamp Title, LLC
PO Box 2423
El Paso, TX 79938
7016 2070 0000 4815 2658

West Texas Specialty
Consulting Services, Inc.
5352 W Cobblestone Street
Bloomington, IN 47403
7016 2070 0000 4815 2641

Linda Gail Small
140 Jay Porter
Henderson, NV 89002
7016 2070 0000 4815 2634

Guadalupe Land & Minerals, LLC
17521 Arratia Ave.
El Paso, TX 79938
7016 2070 0000 4815 2627

Robert Scott Owen
16 Sail Court
Sacramento, CA 95831
7016 2070 0000 4815 2610

Franklin C Owen
1774 Route 73
Keene Valley, NY 12943
7016 2070 0000 4815 2801

Application of Matador Production Company for administrative approval for off-lease measurement and approval to surface commingle (lease commingle) oil and gas production from the spacing units comprised of the W/2 of Section 30 and the W/2 of Section 31, Township 23 South, Range 28 East, NMPM, Eddy County, New Mexico.

David Ross Johnson
1444 Scotch Ct, SE
Salem, OR 97306
7016 2070 0000 4815 2795

New Mexico Western Minerals, Inc.
PO Box 1738
Roswell, NM 88202
7016 2070 0000 4815 2788

Nadal and Gussman Delaware, LLC;
Crown Oil Partners V, LP;
Crump Energy Partners II, LLC
4000 N. Big Spring St, Suite 310
Midland, TX 79705
7016 2070 0000 4815 2771

Robert D. Rose
146 N. Miller St.
Mesa, AZ 85203
7016 2070 0000 4815 2764

Danielle Louise Lee
P.O. Box 20205
Mesa, AZ 85277
7016 2070 0000 4815 2757

Gretchen Kathleen Harris
1147 Horizon Ridge Ct. NE
Keizer, OR 97303
7016 2070 0000 4815 2740

Angela Harris Neal
1147 Horizon Ridge Ct. NE
Keizer, OR 97303
7016 2070 0000 4815 2733

Michael Ross Harvey
4268 Julius Ct.
Greensboro, NC 27406
7016 2070 0000 4815 2726

Cris Major
5223 Eldridge Road
Terre Haute, IN 47802
7016 2070 0000 4815 2719

Tim Tipton
40 Hollingers Island
Katy, TX 77450
7016 2070 0000 4815 2900

Lisa Kocela
1001 Waltz Court
Bloomington, IN 47401
7016 2070 0000 4815 2894

Sherrie hadwick
4501 Gaslight Place, Lot 313
Terre Haute, IN 47802
7016 2070 0000 4815 2887

Legal Notice

To: Mo Oil, LLC, David M. Fritschy, his heirs or devisees, Kelli J. Brant, her heirs or devisees, Patricia B. Schenk, her heirs or devisees, Danny Boyd Bailey, his heirs or devisees, Terese Harkey Klesel, her heirs or devisees, Corbett Dee Harkey, his heirs or devisees, Evalyn S. Stephens, Trustee of the Evalyn S. Stephens Trust, dated November 12, 1996, her heirs or devisees, Linda F. Fritschy, her heirs or devisees, Sterling Lafayette Bailey Jr., his heirs or devisees, Derek K. Brown, his heirs or devisees, Sandra Louise White, her heirs or devisees, Eugene P. Burkholder, his heirs or devisees, Calvin Spencer Bingham III, as trustee of the Calvin Spencer Bingham Testamentary Trust "A", his heirs or devisees, Stefani Bryla Pauley Johnston, her his heirs or devisees, Danny Boyd Bailey and Sterling L. Bailey Jr., as co-trustees of the Kathryn Harkey Bailey Trust, heir or devisees, Gayle N. Nicolay Rev. Trust, Virginia Nevill Hoff Mgmt. Trust, Guy P. Witherspoon, his heir or devisees, John Guitar Witherspoon, his heir or devisees, Whitten Guitar Witherspoon, his heir or devisees, Brett Guitar Witherspoon, his heir or devisees, Wende Witherspoon Morgan, her heir or devisees, Pressley H. Guitar, his heir or devisees, Kelly Woods Leach, her heir or devisees, Catherine Gall Parker, SSP, Caren Gall Lucas, her heir or devisees, Jack G. Woods Jr., his heir or devisees, Catherine Gall Parker and Craig Parker, co-trustees of the Catherine Gall Parker Exempt Trust, Caren Gall Lucas, Trustee of the Caren Gall Lucas Exempt Trust, Catherine Gall Parker and Craig Parker, co-trustees of the Gall Credit Shelter Trust, Laura Jean Hofer Trust, Murchison-Guitar Family, LP, Barbara Lee Backman, Inc., Sally Guitar, her heir or devisees, Judy Guitar Uhey, her heir or devisees, Sharon Guitar Ellis, her heir or devisees, Melissa McGee, her heir or devisees, Guitar Galusha, LP, John Guitar, his heir or devisees, Leslie Guitar Nichols, her heir or devisees, Leslie David Guitar, his heir or devisees, Polk Land & Minerals, JPH Holdings, LP, Crownrock Minerals, James Minor Alexander, his heir or devisees, Jeri Alexander Lott, his heir or devisees, Jane Alexander Rhodes Estate, James M. Alexander & Jeri Mangum, Ind. Executors, Earl B. Guitar, Jr. and Margaret Ann Guitar, Trustees of the Earl B. Guitar, Jr. and Margaret Ann Guitar Revocable Trust, Guitar Land & Cattle, LP, Mallard Royalty Partners, LP, Santa Elena Minerals, LP, Woods Dickens Ranch, LP, Pardue Limited Company, James Edward Brown, his heir or devisees, Marjorie H Topton, her heir or devisees, Holly Chadwick, her heir or devisees, Shelby Chatwish, her heir or devisees, Rachel Chadwick, her heir or devisees, Bonnie Wood, her heir or devisees, Lynda Coursey, her heir or devisees, Jennifer Vaughn, her heir or devisees, John Scott Fausett, his heir or devisees, Garlon King, his heir or devisees, Devon King, his heir or devisees, Melissa King, her heir or devisees, Chad King, his heir or devisees, Atenna King, her heir or devisees, Kimberly J McMurley, her heir or devisees, Brian Small, his heir or devisees, Annita June Small Parker, her heir or devisees, Clint Small, his heir or devisees, Trevor S. Turmelle, his heir or devisees, Wolfcamp Title LLC, West Texas Specialty Consulting Services, Inc., Linda Gail Small, her heir or devisees, Guadalupe Land & Minerals, LLC, Robert Scott Owen, his heir or devisees, Franklin C. Owen, his heir or devisees, David Ross Johnson, his heir or devisees, New Mexico Western Minerals, Inc., Nadal and Gussman Delaware, LLC, Crown Oil Partners V, LP,

EXHIBIT

7

Crump Energy Partners II, LLC, Robert D. Rose, his heir or devisees, Danielle Louise Lee, her heir or devisees, Gretchen Kathleen Harris, her heir or devisees, Angela Harris Neal, her heir or devisees, Michael Ross Harvey, his heir or devisees, Cris Major, his heir or devisees, Tim Tipton, his heir or devisees, Lisa Kocela, her heir or devisees, Sherrie Hadwick, her heir or devisees, and any unknown person who has a mineral interest in the W/2 of Section 30 and the W/2 of Section 31, Township 23 South, Range 28 East, NMPM, in Eddy County, New Mexico

Application of Matador Production Company for administrative approval for off-lease measurement and approval to surface commingle (lease commingle) oil and gas production from *all existing and future wells* within the spacing units comprised of the W/2 of Section 30 and the W/2 of Section 31, Township 23 South, Range 28 East, NMPM, in Eddy County, New Mexico. Pursuant to 19.15.12.10(C)(4)(g), Matador also seeks authority to commingle gas production into the DLK Black River South Trunk Line from future leases with notice provided only to interest owners within future leases. Matador seeks approval to surface commingle oil and gas production at a common tank battery from the Black River Wolfcamp East (Gas) Pool (Pool Code 97442) for all existing and future wells at a surface facility located in the NW/4 NW/4 (Lot 1) of Section 31. Any objection to this application must be filed in writing within twenty days from date of publication with the applicant and the New Mexico Oil Conservation Division, 1220 South St. Francis Drive, Santa Fe, New Mexico, 87505. If no objection is received within this twenty-day period, this application may be approved administratively by the Division. If you have any questions about this application, please contact Dana R. Arnold, 5400 LBJ Freeway, Suite 1500, Dallas, TX 75240, (972) 371-5284, darnold@matadorresources.com.



Jordan L. Kessler
Associate
Phone (505) 988-4421
Fax (505) 983-6043
jkessler@hollandhart.com

November 28, 2016

CERTIFIED MAIL
RETURN RECEIPT REQUESTED

TO: ALL AFFECTED PARTIES

Re: Application of Matador Production Company for administrative approval for off-lease measurement and approval to surface commingle (lease commingle) oil and gas production from the spacing units comprised of the W/2 of Section 30 and the W/2 of Section 31, Township 23 South, Range 28 East, NMPM, Eddy County, New Mexico.

Ladies and Gentlemen:

Enclosed is a copy of the above-referenced application which was filed with the New Mexico Oil Conservation Division on this date. Any objection to this application must be filed in writing within twenty days from this date at the Division's Santa Fe office located at 1220 South St. Francis Drive, Santa Fe, New Mexico, 87505. If no objection is received within this twenty-day period, this application may be approved administratively by the Division.

If you have any questions about this application, please contact the following:

Dana Arnold
Matador Production Company
972-371-5284
darnold@matadorresources.com

Sincerely,

A handwritten signature in black ink, appearing to read "J. L. Kessler".

Jordan L. Kessler
ATTORNEY FOR
MATADOR PRODUCTION COMPANY

McMillan, Michael, EMNRD

From: Jordan L. Kessler <JLKessler@hollandhart.com>
Sent: Thursday, December 1, 2016 1:28 PM
To: McMillan, Michael, EMNRD
Subject: RE: Jim Tom Lotos surface commingle application
Attachments: Production Charlie Sweeney 201H.XLSX

Mike,

The Jim Tom Lontos 30 23S 28E RB Well No. 221H is not yet producing. Attached is production information for the Charlie Sweeney.

Thanks,
Jordan

From: McMillan, Michael, EMNRD [mailto:Michael.McMillan@state.nm.us]
Sent: Wednesday, November 30, 2016 4:21 PM
To: Jordan L. Kessler
Subject: Jim Tom Lotos surface commingle application

Jordan:

I need the last 6-month's monthly production or the Jim Tom Lotos 30 23S 28E RB Well No. 221H and the Charlies Sweeney 31 23S 28E RB Well No. 201H.

Thanks
Mike

MICHAEL A. MCMILLAN

Engineering Bureau, Oil Conservation Division
1220 south St. Francis Dr., Santa Fe NM 87505
O; 505.476.3448
Michael.McMillan@state.nm.us

Production Summary Report

API: 30-015-43695

CHARLIE SWEENEY 31 23 28 RB #201H

Printed On: Thursday, December 01 2016

		Production				
Year	Pool	Month	Oil(BBLS)	Gas(MCF)	Water(BBLS)	Days P/I
2016	[97442] BLACK RIVER; WOLFCAMP, EAST (G)	Jul	11540	146820	87488	13
2016	[97442] BLACK RIVER; WOLFCAMP, EAST (G)	Aug	22961	42424	84582	31
2016	[97442] BLACK RIVER; WOLFCAMP, EAST (G)	Sep	16814	42106	57063	30

MMCMILLAN (PETROLEUM ENGINEER FOR OCD) SIGN OUT HELP

[Wells](#)
[Operator Data](#)
[OCD Review](#)
[OCD Only](#)
[Administration](#)
OCD Permitting
[Home](#)
[Land Searches](#)
[Land Details](#)
Section : 30-238-28E

Type: Normal

Total Acres: 638.94

County: Eddy (15)

D (1) Federal ¹ Fee ² (15) 39.69	C (C) Fee ¹ Fee ² (15) 40	B (B) Fee ¹ Fee ² (15) 40	A (A) Fee ¹ Fee ² (15) 40
E (2) Federal ¹ Fee ² (15) 39.72	F (F) Fee ¹ Fee ² (15) 40	G (G) Fee ¹ Fee ² (15) 40	H (H) Fee ¹ Fee ² (15) 40
L (3) Federal ¹ Fee ² (15) 39.75	K (K) Fee ¹ Fee ² (15) 40	J (J) Fee ¹ Fee ² (15) 40	I (I) Fee ¹ Fee ² (15) 40
M (4) Federal ¹ Fee ² (15) 39.78	N (N) Fee ¹ Fee ² (15) 40	O (O) Fee ¹ Fee ² (15) 40	P (P) Fee ¹ Fee ² (15) 40

Note¹ = Surface Owner RightsNote² = Sub-Surface Mineral Rights**Land Restrictions**

No land restrictions found for this section.

[Return to Search](#)

New Mexico Energy, Minerals and Natural Resources Department | Copyright 2012
 1220 South St. Francis Drive | Santa Fe, NM 87505 | P: (505) 476-3200 | F: (505) 476-3220

[EMNRD Home](#)
[OCD Main Page](#)
[OCD Rules](#)
[Help](#)

MMCMILLAN (PETROLEUM ENGINEER FOR OCD) SIGN OUT HELP

[Wells](#)
[Operator Data](#)
[OCD Review](#)
[OCD Only](#)
[Administration](#)
OCD Permitting
[Home](#)
[Land Searches](#)
[Land Details](#)
Section : 31-23S-28E

Type: Normal

Total Acres: 639.58

County: Eddy (15)

D (1) Federal ¹ Fee ² (15) 39.82	C (C) Fee ¹ Fee ² (15) 40	B (B) Fee ¹ Fee ² (15) 40	A (A) Fee ¹ Federal ² (15) 40
E (2) Federal ¹ Fee ² (15) 39.87	F (F) Fee ¹ Fee ² (15) 40	G (G) Fee ¹ Federal ² (15) 40	H (H) Fee ¹ Federal ² (15) 40
L (3) Federal ¹ Fee ² (15) 39.92	K (K) State ¹ State ² (15) 40	J (J) Fee ¹ Federal ² (15) 40	I (I) Fee ¹ Federal ² (15) 40
M (4) Federal ¹ Fee ² (15) 39.97	N (N) Fee ¹ Fee ² (15) 40	O (O) Fee ¹ Federal ² (15) 40	P (P) Fee ¹ Federal ² (15) 40

Note ¹ = Surface Owner RightsNote ² = Sub-Surface Mineral Rights**Land Restrictions**

No land restrictions found for this section.

[Return to Search](#)

New Mexico Energy, Minerals and Natural Resources Department | Copyright 2012
1220 South St. Francis Drive | Santa Fe, NM 87505 | P: (505) 476-3200 | F: (505) 476-3220

[EMNRD Home](#)
[OCD Main Page](#)
[OCD Rules](#)
[Help](#)

Wells Operator Data OCD Review OCD Only Administration

OCD Permitting

Home Wells Well Details

30-015-43826 JIM TOM LONTOS 30 23S 28E RB #221H [316333]

General Well Information

Operator: [228937] MATADOR PRODUCTION COMPANY
 Status: New
 Well Type: Gas Direction: Horizontal
 Work Type: New Lease Type: Private
 Surface Location: M-30-23S-28E Lot: 4 492 FSL 459 FWL
 Lat/Long: 32.2696255, -104.133774 NAD27
 GL Elevation: 3117 Sing/Mult Compl: Single
 Potash Waiver: False

Proposed Formation and/or Notes

WOLFCAMP

Depths

Proposed: 15400 Total Vertical Depth: 0
 Measured Vertical Depth: 0 Plugback Measured: 0

Formation Tops

Formation	Top	Producing

Event Dates

Initial APD Approval: 06/15/2016
 Most Recent APD Approval: 06/23/2016 Current APD Expiration: 06/23/2018
 APD Cancellation:
 APD Extension Approval:
 Spud: 12/09/2016
 Approved Temporary Abandonment: TA Expiration:
 Shut In:
 Plug and Abandoned Intent Received:
 Well Plugged: PNR Expiration:
 Site Release: Last MIT/BHT:
 Last Inspection:

History

Effective Date	Property	Well Number	Operator	C-101 Work Type	Well Type	Well Status	Apd Cancelled	Plug Date
06/23/2016	[316333] JIM TOM LONTOS 30 23S 28E RB	#221H	[228937] MATADOR PRODUCTION COMPANY	New	Gas	New		

Quick Links

- [General Well Information](#)
- [History](#)
- [Comments](#)
- [Operator](#)
- [Pits](#)
- [Casing](#)
- [Well Completions](#)
- [Financial Assurance](#)
- [Compliance](#)
- [Complaints, Incidents and Spills](#)
- [Orders](#)
- [Production](#)
- [Transporters](#)
- [Points of Disposition](#)

Associated Images

- [Well Files](#)
- [Well Logs](#)
- [Administrative Orders](#)

New Searches

- [New Well Search](#)