

Submit 1 Copy To Appropriate District Office  
District I - (575) 393-6161  
1625 N. French Dr., Hobbs, NM 88240  
District II - (575) 748-1283  
811 S. First St., Artesia, NM 88210  
District III - (505) 334-6178  
1000 Rio Brazos Rd., Aztec, NM 87410  
District IV - (505) 476-3460  
1220 S. St. Francis Dr., Santa Fe, NM 87505

State of New Mexico  
Energy, Minerals and Natural Resources

OIL CONSERVATION DIVISION  
1220 South St. Francis Dr.  
Santa Fe, NM 87505

Form C-103  
Revised July 18, 2013

<b>SUNDRY NOTICES AND REPORTS ON WELLS</b> (DO NOT USE THIS FORM FOR PROPOSALS TO DRILL OR TO DEEPEN OR PLUG BACK TO A DIFFERENT RESERVOIR. USE "APPLICATION FOR PERMIT" (FORM C-101) FOR SUCH PROPOSALS.)		WELL API NO. <b>30-025-43585</b>
1. Type of Well: Oil Well <input checked="" type="checkbox"/> Gas Well <input type="checkbox"/> Other <input type="checkbox"/>		5. Indicate Type of Lease STATE <input checked="" type="checkbox"/> FEE <input type="checkbox"/>
2. Name of Operator <b>EOG Resources, Inc.</b>		6. State Oil & Gas Lease No.
3. Address of Operator <b>P.O. Box 2267 Midland, TX 79702</b>		7. Lease Name or Unit Agreement Name <b>Black Bear 36 State</b>
4. Well Location Unit Letter <b>A</b> <b>250</b> feet from the <b>North</b> line and <b>1195</b> feet from the <b>East</b> line Section <b>36</b> Township <b>25S</b> Range <b>33E</b> NMPM County <b>Lea</b>		8. Well Number <b>705H</b>
11. Elevation (Show whether DR, RKB, RT, GR, etc.) <b>3329' GR</b>		9. OGRID Number <b>7377</b>
		10. Pool name or Wildcat <b>WC-025 G-09 S253336D; Upper WC</b>

12. Check Appropriate Box to Indicate Nature of Notice, Report or Other Data

NOTICE OF INTENTION TO:

PERFORM REMEDIAL WORK ☐ PLUG AND ABANDON ☐  
TEMPORARILY ABANDON ☐ CHANGE PLANS ☐  
PULL OR ALTER CASING ☐ MULTIPLE COMPL ☐  
DOWNHOLE COMMINGLE ☐  
CLOSED-LOOP SYSTEM ☐  
OTHER: ☒

SUBSEQUENT REPORT OF:

REMEDIAL WORK ☐ ALTERING CASING ☐  
COMMENCE DRILLING OPNS ☐ P AND A ☐  
CASING/CEMENT JOB ☐  
OTHER: ☐

13. Describe proposed or completed operations. (Clearly state all pertinent details, and give pertinent dates, including estimated date of starting any proposed work). SEE RULE 19.15.7.14 NMAC. For Multiple Completions: Attach wellbore diagram of proposed completion or recompletion.

EOG Resources requests an amendment to our approved surface commingling order PLC-441. Adding additional wells:

Black Bear 36 State #705H 30-025-43585 (98094) WC-025 G-09 S253336D; Upper Wolfcamp  
Black Bear 36 State #601H 30-025-43583 (98094) WC-025 G-09 S253336D; Upper Wolfcamp

CTB located in Unit Letter D (NWNW) of Sec 36-25S-33E

Subsequently drilled wells that produce from the subject pool within the project areas approved by this order may be added to this commingling authority by submittal of a Sundry Notice to the Engineering Bureau in Santa Fe.

NMSLO is being notified concurrently with the filing of this application.

Spud Date:

Rig Release Date:

I hereby certify that the information above is true and complete to the best of my knowledge and belief.

SIGNATURE

*Stan Wagner*  
Stan Wagner

TITLE

Regulatory Analyst

DATE

4/20/2017

Type or print name

E-mail address:

PHONE:

432-686-3689

For State Use Only

APPROVED BY:

TITLE

DATE

Conditions of Approval (if any):

*Michael McMillan Engineering Bureau*

# **APPLICATION FOR SURFACE POOL/LEASE COMMINGLING & OFF LEASE STORAGE & MEASUREMENT**

By order PLC-441 dated January 26, 2016 EOG received approval from the New Mexico Conservation Division to surface commingle oil and gas production from the following pools and wells:

	API	Well Name	Well Number	Pool Code/Name
1	30-025-43006	BLACK BEAR 36 STATE	#701H	[98094] WC-025 G-09 S253336D; UPPER WOLFCAMP
2	30-025-43007	BLACK BEAR 36 STATE	#702H	[98094] WC-025 G-09 S253336D; UPPER WOLFCAMP
3	30-025-43008	BLACK BEAR 36 STATE	#703H	[98094] WC-025 G-09 S253336D; UPPER WOLFCAMP
4	30-025-43009	BLACK BEAR 36 STATE	#704H	[98094] WC-025 G-09 S253336D; UPPER WOLFCAMP
5	30-025-42154	BROWN BEAR 36 STATE	#502H	[97741] WC-025 G-09 S253335K; BONE SPRING
6	30-025-42153	BROWN BEAR 36 STATE	#701H	[98094] WC-025 G-09 S253336D; UPPER WOLFCAMP
7	30-025-42538	BROWN BEAR 36 STATE	#702H	[98094] WC-025 G-09 S253336D; UPPER WOLFCAMP
8	30-025-42539	BROWN BEAR 36 STATE	#703H	[98094] WC-025 G-09 S253336D; UPPER WOLFCAMP
9	30-025-42839	BROWN BEAR 36 STATE	#704H	[98094] WC-025 G-09 S253336D; UPPER WOLFCAMP

By letters dated May 20, 2015 and January 29, 2016 EOG received like approval from the State of New Mexico Commissioner of public lands.

EOG now respectfully requests permission to surface commingle oil and gas production from the above referenced wells with oil and gas production from the following wells:

	API	Well Name	Well Number	Location	Pool Code/Name	Status	*Oil API	*Gas BTU
1	30-025-43585	BLACK BEAR 36 STATE	#705H	A-36-25S-33E	[98094] WC-025 G-09 S253336D; UPPER WOLFCAMP	Permitted	47	1287/cft
2	30-025-43583	BLACK BEAR 36 STATE	#601H	A-36-25S-33E	[97741] WC-025 G-09 S253335K; BONE SPRING	Permitted	47	1287/cft

\* projected, pending completion

Additionally, EOG hereby requests permission to surface commingle oil and gas production from the above referenced wells with oil and gas production from any other well completed in section 36-25S-33E in either of the pools described above.

Should approval be given, it will also serve as approval to measure and store production from the Black Bear wells off lease since these wells are/will be located on a different lease than the central tank battery.

## **General Information:**

- State lease NM VB-1513-0001 covers 320 acres, being the W2 of section 36 T25S R33E Lea County, NM. All Brown Bear wells are located on this lease, as is the central tank battery.
- State lease NM VB-1512-0001 covers 320 acres, being the E2 of section 36 T25S R33E Lea County, NM. All Black Bear wells are located on this lease.
- Ownership of all Brown Bear and Black Bear wells is identical (see landman statement attached).
- The central tank battery has already been built and is covered by BL-2353 with the New Mexico State Land Office.
- Attached is (1) a map that displays the location of each of the wells and the CTB, (2) a process flow diagram, and (3) the C-102 plats for each of the wells.

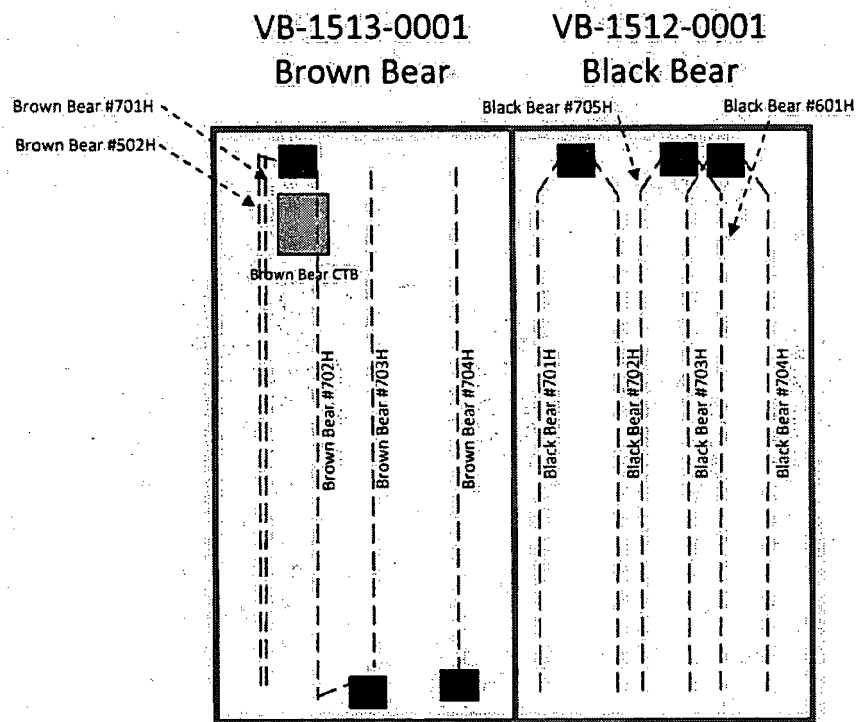
### **Oil and Gas Metering:**

- Brown Bear 36 State #502H production is measured at its dedicated separator which includes: Coriolis meter for oil, senior orifice meter for gas, and turbine meter for water.
- Brown Bear 36 State #701H production is measured at its dedicated separator which includes: Coriolis meter for oil, senior orifice meter for gas, and turbine meter for water.
- Brown Bear 36 State #702H production is measured at its dedicated separator which includes: Coriolis meter for oil, senior orifice meter for gas, and turbine meter for water.
- Brown Bear 36 State #703H production is measured at its dedicated separator which includes: Coriolis meter for oil, senior orifice meter for gas, and turbine meter for water.
- Brown Bear 36 State #704H production is measured at its dedicated separator which includes: Coriolis meter for oil, senior orifice meter for gas, and turbine meter for water.
- Black Bear 36 State #701H production is measured at its dedicated separator which includes: Coriolis meter for oil, senior orifice meter for gas, and turbine meter for water.
- Black Bear 36 State #702H production is measured at its dedicated separator which includes: Coriolis meter for oil, senior orifice meter for gas, and turbine meter for water.
- Black Bear 36 State #703H production is measured at its dedicated separator which includes: Coriolis meter for oil, senior orifice meter for gas, and turbine meter for water.
- Black Bear 36 State #704H production is measured at its dedicated separator which includes: Coriolis meter for oil, senior orifice meter for gas, and turbine meter for water.
- Black Bear 36 State #705H production is measured at its dedicated separator which includes: Coriolis meter for oil, senior orifice meter for gas, and turbine meter for water.
- Black Bear 36 State #601H production is measured at its dedicated separator which includes: Coriolis meter for oil, senior orifice meter for gas, and turbine meter for water.

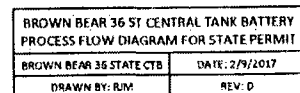
### **Process and Flow Descriptions:**

The production from each well will flow into a dedicated 3-phase separator. The production stream will be separated into 3 independent streams (gas, oil, and water) by the separator and each stream will be measured individually after it exits the separator. The gas will be measured using a senior orifice meter. The oil will be measured using a Coriolis meter, and the water will be measured using a turbine meter. The water from each separator is combined in a common header and flows into (4) 500 barrel coated steel tanks. Guided wave radar is used to measure water volumes in these tanks. The oil from each separator will be combined into a common header and flow into a heated separator to aid separation of water entrained in the oil. Water from the heated separator flows into the common water header connected to the (4) 500 barrel water tanks. The water is then pumped and/or trucked to a salt water disposal well. The oil from the heated separator flows through a vapor recovery tower where gas is allowed to breakout at a lower pressure, and then the oil flows into (8) 500 barrel coated steel tanks. Guided wave radar is used to measure water and oil volumes in these tanks. Oil is pumped out of the tanks through a Coriolis meter into a truck or a pipeline. Every tank utilizes a guided wave radar to determine the volume of product in each. After the gas from each separator is measured it is combined into a common header. The gas from the heated separator also flows into this header. The gas flows through the header to a custody transfer orifice meter that serves as our lease production meter. The overhead gas from the vapor recovery tower is compressed by a vapor recovery compressor and then measured by a custody transfer orifice meter. The gas from the vapor recovery system combines with the gas from the lease production meter and flows into our gas gathering pipeline system.

## BROWN/BLACK BEAR WELLS & CTB LAYOUT



Section 36 T25S R33E



BROWN BEAR 35 STATE CTB	DATE: 2/9/2017
DRAWN BY: RJM	REV: 0



**District I**  
1625 N. French Dr., Hobbs, NM 88240  
Phone: (575) 393-6161 Fax: (575) 393-0720  
**District II**  
811 S. First St., Artesia, NM 88210  
Phone: (575) 748-1283 Fax: (575) 748-9720  
**District III**  
1000 Rio Brazos Road, Aztec, NM 87410  
Phone: (505) 334-6178 Fax: (505) 334-6170  
**District IV**  
1220 S. St. Francis Dr., Santa Fe, NM 87505  
Phone: (505) 476-3460 Fax: (505) 476-3462

State of New Mexico  
Energy, Minerals & Natural Resources  
Department  
OIL CONSERVATION DIVISION  
1220 South St. Francis Dr.  
Santa Fe, NM 87505

FORM C-102  
Revised August 1, 2011  
Submit one copy to appropriate  
District Office

☐ AMENDED REPORT

WELL LOCATION AND ACREAGE DEDICATION PLAT

API Number 30-025-43585	Pool Code 98094	Pool Name WC-025 G-09 S253336D; Upper Wolfcamp
Property Code 38965	Property Name BLACK BEAR 36 STATE	Well Number #705H
UGRID No. 7377	Operator Name EOG RESOURCES, INC.	Elevation 3329'

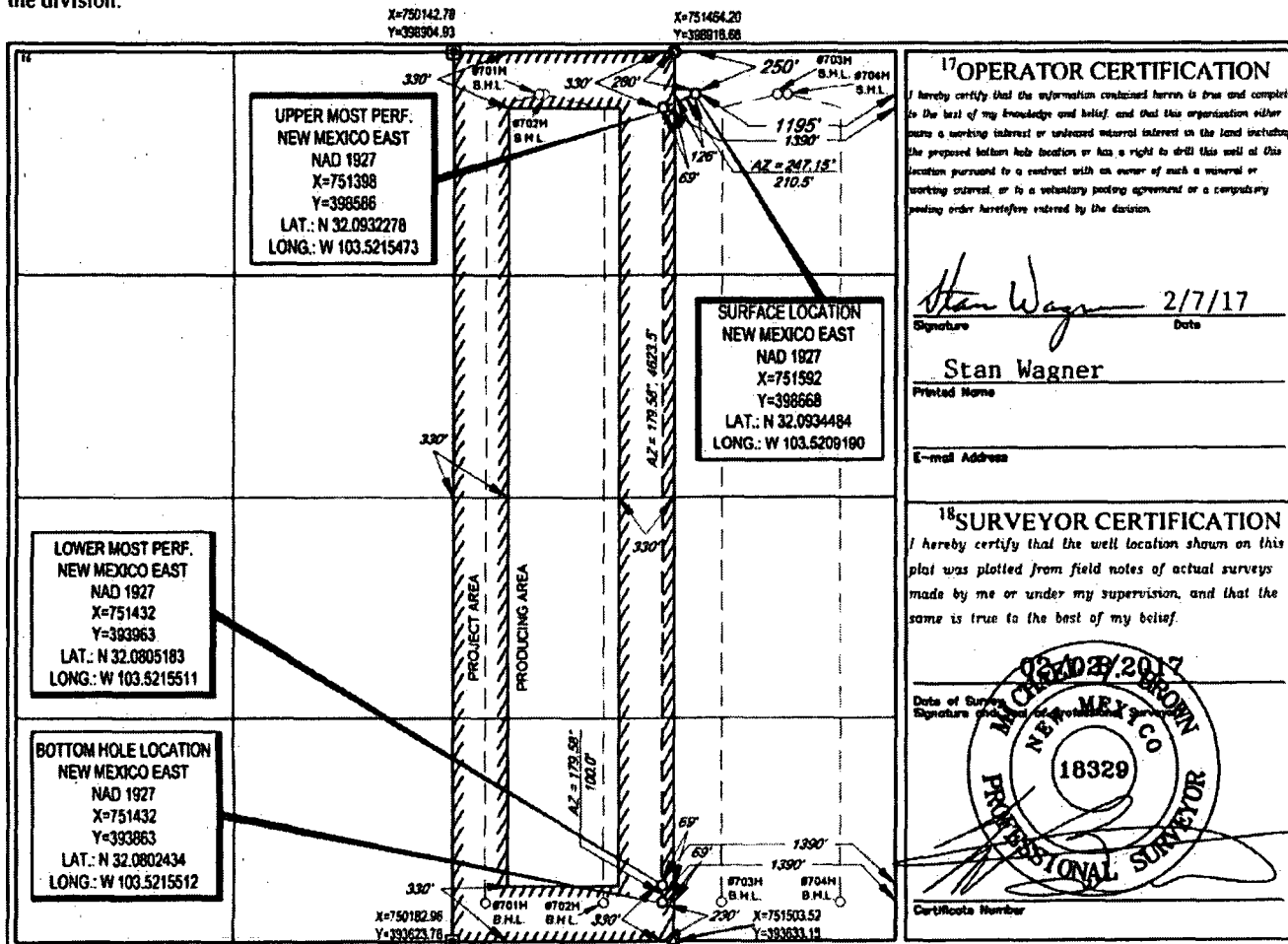
<sup>10</sup>Surface Location

UL or lot no.	Section	Township	Range	Lot Idn	Feet from the	North/South line	Feet from the	East/West line	County
A	36	25-S	33-E	-	250'	NORTH	1195'	EAST	LEA

UL or lot no.	Section	Township	Range	Lot Idn	Feet from the	North/South line	Feet from the	East/West line	County
0	36	25-S	33-E	-	230'	SOUTH	1390'	EAST	LEA

Dedicated Acres 160.00	Joint or Infill	Consolidation Code	Order No.
---------------------------	-----------------	--------------------	-----------

No allowable will be assigned to this completion until all interests have been consolidated or a non-standard unit has been approved by the division.





EOG Resources, Inc.  
5509 Champions Drive  
Midland, Texas 79706  
(432) 686-3600

Date: April 19, 2017  
To: State of New Mexico Oil Conservation Division  
Re: Application for Surface Pool/ Lease Commingling & Off Lease Storage & Measurement – Black Bear/Brown Bear


To whom it may concern:

This letter serves to notice you that the ownership of the following wells is identical in working, royalty, and overriding royalty interest and percentages:

1. Brown Bear 36 State #502H
2. Brown Bear 36 State #701H
3. Brown Bear 36 State #702H
4. Brown Bear 36 State #703H
5. Brown Bear 36 State #704H
6. Black Bear 36 State #701H
7. Black Bear 36 State #702H
8. Black Bear 36 State #703H
9. Black Bear 36 State #704H
10. Black Bear 36 State #705H
11. Black Bear 36 State #601H

I certify that this information is true and correct to the best of my knowledge.

EOG Resources, Inc.

By:   
Paul Boland  
Sr. Landman