

NM OIL CONSERVATION
ARTESIA DISTRICT

JUL 31 2017

NMDistrict I
1625 N. French Dr., Hobbs, NM 88240
District II
1301 W. Grand Avenue, Artesia, NM 88210
District III
1000 Rio Brazos Road, Aztec, NM 87410
District IV
1220 S. St. Francis Dr., Santa Fe, NM 87505

State of New Mexico
Energy Minerals and Natural Resources
Oil Conservation Division
1220 South St. Francis Dr.
Santa Fe, NM 87505

Form C-141
Revised August 8, 2011

RECEIVED
Submit Copy to appropriate District Office
in accordance with 19.15.29 NMAC.

FAB1717248605

NAB17254336050

Release Notification and Corrective Action

OPERATOR

☒ Initial Report ☒ Final Report

Name of Company Enterprise Field Services, LLC	Contact Alena Miro
PO Box 4324, Houston, TX 77210	Telephone No. 575-628-6802
Facility Name Pipeline ROW, Poker Lake Discharge	Facility Type: Natural Gas Pipeline
Surface Owner BLM	Mineral Owner NA Lease No. NA

LOCATION OF RELEASE

Unit Letter I	Section 19	Township 24S	Range 30E	Feet from the 215	North/South Unit Line South	Feet from the 400	East/West Unit Line West	County Eddy
-------------------------	----------------------	------------------------	---------------------	-----------------------------	--	-----------------------------	---------------------------------------	-----------------------

Latitude: **N32.200000** Longitude: **W-103.91514**

NATURE OF RELEASE

Type of Release Natural Gas	Volume of Release: 197 MSCF	Volume Recovered: NA
Source of Release Pipeline blowdown	Date and Hour of Occurrence 7/21/2017 @ 7:50 MST	Date and Hour of Discovery 7/21/2017 @ 7:50 MST
Was Immediate Notice Given? <input type="checkbox"/> Yes <input type="checkbox"/> No <input checked="" type="checkbox"/> Not Required	If YES, To Whom?	
By Whom?	Date and Hour	
Was a Watercourse Reached? <input type="checkbox"/> Yes <input checked="" type="checkbox"/> No	If YES, Volume Impacting the Watercourse.	

If a Watercourse was Impacted, Describe Fully.*


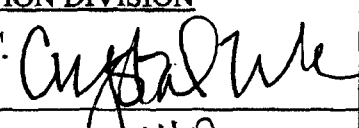
Describe Cause of Problem and Remedial Action Taken.*

Natural gas was released due to a pipeline leak. Pipeline segment was isolated, blown down, and will be repaired following a standard one-call.

Describe Area Affected and Cleanup Action Taken.*

N/A

I hereby certify that the information given above is true and complete to the best of my knowledge and understand that pursuant to NMOCD rules and regulations all operators are required to report and/or file certain release notifications and perform corrective actions for releases which may endanger public health or the environment. The acceptance of a C-141 report by the NMOCD marked as "Final Report" does not relieve the operator of liability should their operations have failed to adequately investigate and remediate contamination that pose a threat to ground water, surface water, human health or the environment. In addition, NMOCD acceptance of a C-141 report does not relieve the operator of responsibility for compliance with any other federal, state, or local laws and/or regulations.

Signature: 	OIL CONSERVATION DIVISION	
Printed Name: Jon E. Fields	Env. Specialist: 	
Title: Director, Field Environmental	Approved by District Supervisor:	
E-mail Address: jefields@eprod.com	Approval Date: 8/1/17	Expiration Date: N/A
Date: Phone: 713-381-6684	Conditions of Approval: FINAL	Attached <input type="checkbox"/> 2RP-4373

* Attach Additional Sheets If Necessary

Please refer to the New Mexico Oil
Conservation Division Website for
updated form(s) at:
[http://www.emnrd.state.nm.us/
OCD/forms.html](http://www.emnrd.state.nm.us/OCD/forms.html)
Thank you

9/18/17 AD

Weaver, Crystal, EMNRD

From: Miro, Alena <ammiro@eprod.com>
Sent: Monday, July 31, 2017 7:45 AM
To: Mendez, Brenda; Bratcher, Mike, EMNRD; Weaver, Crystal, EMNRD; 'rpair@blm.gov'
Cc: Ferguson, Dina; Nolan, Shiver
Subject: RE: Poker Lake
Attachments: Eddy County Revised C-141 Release Report ROW-Poker Lake (7-21) July 201....pdf

Please find the revised C-141 per comments from Randy.

From: Mendez, Brenda
Sent: Wednesday, July 26, 2017 11:22 AM
To: 'mike.bratcher@state.nm.us'; crystal.weaver@state.nm.us; 'rpair@blm.gov'
Cc: Ferguson, Dina; Miro, Alena; Nolan, Shiver
Subject: Poker Lake

For Your Review - Attached is the C-141 Poker Lake Report.

If you have questions or need additional information, please contact Alena Miro at 575-628-6802.

Thank you

Brenda J. Mendez – Planning and Reports Analyst
Enterprise Products Operating, LLC
Tel (713) 381-8270 – Fax (713) 880-6660
bimendez@eprod.com

This message (including any attachments) is confidential and intended for a specific individual and purpose. If you are not the intended recipient, please notify the sender immediately and delete this message.

Weaver, Crystal, EMNRD

From: Miro, Alena <ammiro@eprod.com>
Sent: Friday, July 28, 2017 9:47 AM
To: Pair, Randal
Cc: Mendez, Brenda; Bratcher, Mike, EMNRD; Weaver, Crystal, EMNRD; Ferguson, Dina; Nolan, Shiver; Yolanda Jordan
Subject: RE: Poker Lake

Hi Randy,
Happy Friday! Thank you for the help on this! I didn't see that Lat/Long typo when I was reviewing. I will update it and resend shortly.
I've also added some clarifying comments on the distance measurements....I like using the unit lines because I can get a little more accurate. If it is ok, I'd like to keep using them in future submittals.
Let me know what you think,
Alena

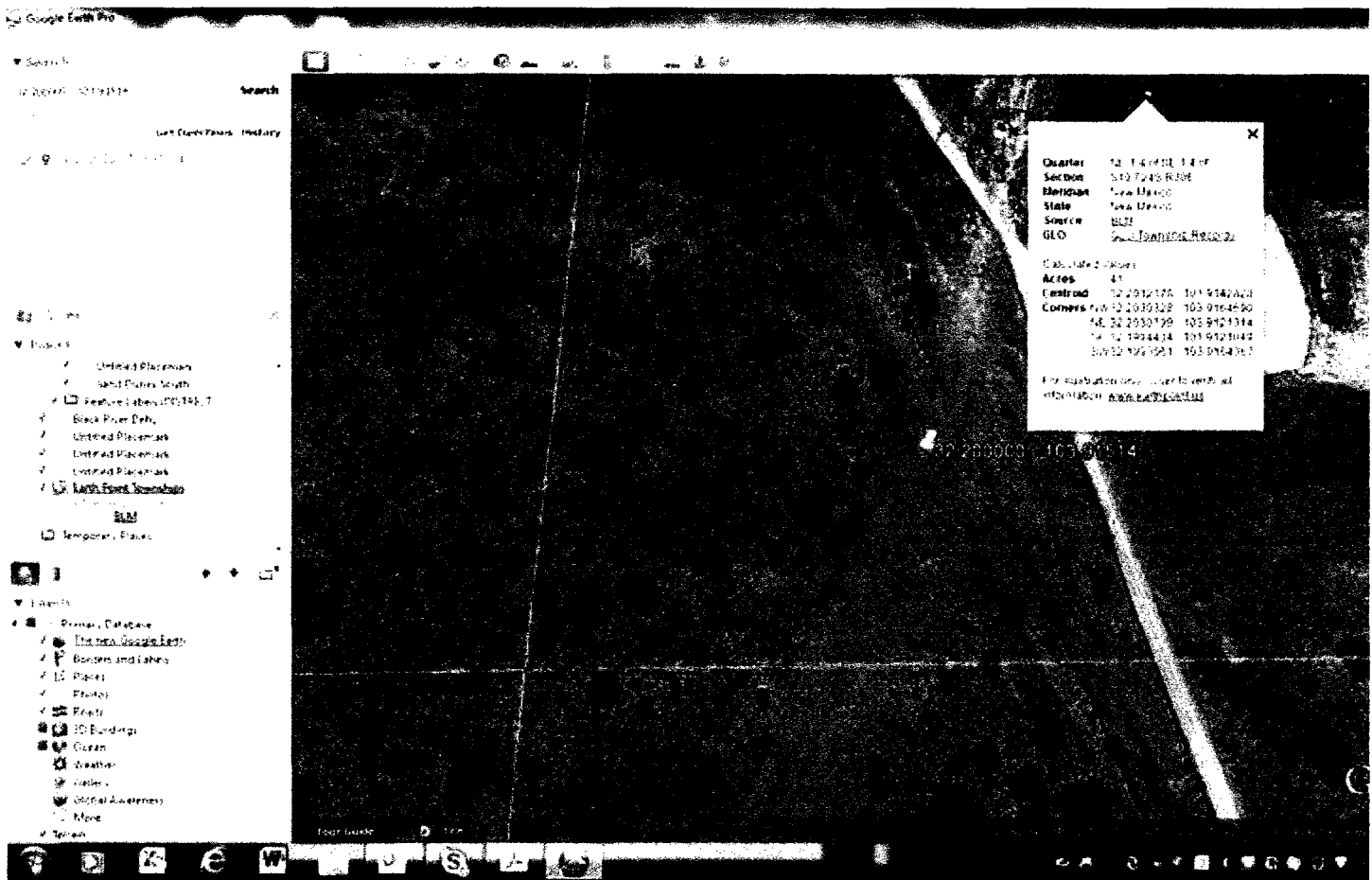
From: Pair, Randal [mailto:rpair@blm.gov]
Sent: Thursday, July 27, 2017 10:24 AM
To: Miro, Alena
Cc: Mendez, Brenda; mike.bratcher@state.nm.us; crystal.weaver@state.nm.us; Ferguson, Dina; Nolan, Shiver; Yolanda Jordan
Subject: Re: Poker Lake

OK - that screenshot clarified things. I think there were two problems:

1. The C-141 listed the Latitude as 32.32000, not 32.2000
2. The footages you reported were from the west line and the south line of "Unit I." Everywhere else in the O&G industry, the footages are measured from the section lines (and hence, the number of feet can be as high as 2640). I'm not sure what to do about the footage issue. BLM has access to the quarter-quarter lines ("Unit boundaries"), but I am not sure that OCD has access to them. Maybe just clarify either by hand notations on the form, or perhaps in the transmitting email or cover letter, that the footages are from the "Unit boundaries." Or you could change to use the O&G standard, and use footages from the section lines.

Randal "Randy" Pair
Envir. Protection Specialist - Realty Compliance
office: 575.234.6240
cell: 575.361.0062
email: rpair@blm.gov

On Wed, Jul 26, 2017 at 8:01 PM, Miro, Alena <ammiro@eprod.com> wrote:



Hi Randy,

Above is a screen shot of what I'm showing as the T/S/R for the corresponding lat-long.

Can you give me a call when you get a chance to discuss?

Thank you again,

Alena

From: Pair, Randal [mailto:rpair@blm.gov]

Sent: Wednesday, July 26, 2017 3:04 PM

To: Mendez, Brenda

Cc: mike.bratcher@state.nm.us; crystal.weaver@state.nm.us; Ferguson, Dina; Miro, Alena; Nolan, Shiver; Yolanda Jordan

Subject: Re: Poker Lake

Please check the location info on your C-141. The Lat-Long you gave correspond to T23S R30E Sec 7 Unit H, and Enterprise has no R/W near there. In your legal location, the footages link to Unit M, not Unit I. There is an Enterprise pipeline near there.

There was a previous release on another pipeline (that I worked with Alena on) in Unit I; Lat-Long 32.20208, - 103.91455. Is this the same site?

PLEASE help us out - get your filed operations folks to talk with your realty folks, and report to BLM the R/W ID number (e.g. NM-xxxxx, NMLC-xxxxxxx).

Randal "Randy" Pair

Envir. Protection Specialist - Realty Compliance

office: 575.234.6240

cell: 575.361.0062

email: rpair@blm.gov

On Wed, Jul 26, 2017 at 11:22 AM, Mendez, Brenda <BJMendez@eprod.com> wrote:

For Your Review - Attached is the C-141 Poker Lake Report.

If you have questions or need additional information, please contact Alena Miro at 575-628-6802.

Thank you

Brenda J. Mendez – Planning and Reports Analyst

Enterprise Products Operating, LLC

Tel (713) 381-8270 – Fax (713) 880-6660

bjmendez@eprod.com