

RECEIVED: 04/04/2019	REVIEWER: MAM	TYPE: PC	APP NO: P1MAM1909446056
-------------------------	------------------	-------------	----------------------------

ABOVE THIS TABLE FOR OCD DIVISION USE ONLY

**NEW MEXICO OIL CONSERVATION DIVISION**  
- Geological & Engineering Bureau -  
1220 South St. Francis Drive, Santa Fe, NM 87505



**ADMINISTRATIVE APPLICATION CHECKLIST**

THIS CHECKLIST IS MANDATORY FOR ALL ADMINISTRATIVE APPLICATIONS FOR EXCEPTIONS TO DIVISION RULES AND REGULATIONS WHICH REQUIRE PROCESSING AT THE DIVISION LEVEL IN SANTA FE

Applicant: EOG Resources, Inc. OGRID Number: 7377  
Well Name: Jolly Roger 16 State 302H and other wells API: 30-025-44622  
Pool: Red Hills; Bone Spring, North Pool Code: 96434

**SUBMIT ACCURATE AND COMPLETE INFORMATION REQUIRED TO PROCESS THE TYPE OF APPLICATION INDICATED BELOW**

1) **TYPE OF APPLICATION:** Check those which apply for [A]

A. Location – Spacing Unit – Simultaneous Dedication

☐ NSL ☐ NSP (PROJECT AREA) ☐ NSP (PRORATION UNIT) ☐ SD

B. Check one only for [I] or [II]

[I] Commingling – Storage – Measurement

☐ DHC ☐ CTB ☐ PLC ☒ PC ☐ OLS ☐ OLM

[II] Injection – Disposal – Pressure Increase – Enhanced Oil Recovery

☐ WFX ☐ PMX ☐ SWD ☐ IPI ☐ EOR ☐ PPR

2) **NOTIFICATION REQUIRED TO:** Check those which apply.

- A. ☐ Offset operators or lease holders  
B. ☐ Royalty, overriding royalty owners, revenue owners  
C. ☐ Application requires published notice  
D. ☒ Notification and/or concurrent approval by SLO  
E. ☐ Notification and/or concurrent approval by BLM  
F. ☐ Surface owner  
G. ☐ For all of the above, proof of notification or publication is attached, and/or,  
H. ☐ No notice required

**FOR OCD ONLY**

☐ Notice Complete  
☐ Application Content Complete

3) **CERTIFICATION:** I hereby certify that the information submitted with this application for administrative approval is **accurate** and **complete** to the best of my knowledge. I also understand that **no action** will be taken on this application until the required information and notifications are submitted to the Division.

~~Note: Statement must be completed by an individual with managerial and/or supervisory capacity.~~

Sarah Mitchell

Print or Type Name

Sarah Mitchell

Signature

4/4/19  
Date

432-848-9133

Phone Number

Sarah\_mitchell@eogresources.com

e-mail Address

## APPLICATION FOR SURFACE POOL/LEASE COMMINGLING - BLM

EOG Resources, Inc. ("EOG") respectfully requests approval to surface pool/lease commingle oil & gas from the following wells:

Well Name	Location	API #	Pool	Status	Oil BPD	BTU
JOLLY ROGER 16 STATE #302H	C-16-24S-34E	30-025-44622	Red Hills; Bone Spring South [96434]	Permitted	*1900	*1333
JOLLY ROGER 16 STATE #303H	C-16-24S-34E	30-025-44623	Red Hills; Bone Spring South [96434]	Permitted	*1900	*1333
JOLLY ROGER 16 STATE #705H	M-16-24S-34E	30-025-45377	Antelope Ridge; Wolfcamp [2220]	Permitted	*1900	*1333
JOLLY ROGER 16 STATE #706H	M-16-24S-34E	30-025-45378	Antelope Ridge; Wolfcamp [2220]	Permitted	*1900	*1333
JOLLY ROGER 16 STATE #707H	N-16-24S-34E	30-025-45379	Antelope Ridge; Wolfcamp [2220]	Permitted	*1900	*1333
JOLLY ROGER 16 STATE #708H	N-16-24S-34E	30-025-45380	Antelope Ridge; Wolfcamp [2220]	Permitted	*1900	*1333

\*projected, pending completion

### GENERAL INFORMATION :

- State of New Mexico Lease NM VB-1744-0001 covers 320.00 acres, being the W2 of Section 16 in Township 24 South, Range 34 East, Lea County, New Mexico.
- An application to commingle production from the subject wells is being submitted to the NMOCD and the New Mexico State Land Office.
- Ownership is identical in each of the subject wells
- Enclosed herewith is (1) a map that displays the leases, the location of the subject wells, and the proposed CTB, (2) a process flow diagram, (3) and the C-102 plat for each of the wells.

### PROCESS AND FLOW DESCRIPTIONS:

The production from each well will flow into a dedicated 3-phase separator. The production stream will be separated into 3 independent streams (gas, oil, and water) by the separator and each stream will be measured individually after it exits the separator. The gas will be measured using a senior orifice meter and used to allocate total volume measured at the facility check meter, high pressure flare meter, and low pressure flare meter.

JOLLY ROGER 16 STATE #302H gas allocation meter is an Emerson orifice meter (S/N \*67626901)

JOLLY ROGER 16 STATE #303H gas allocation meter is an Emerson orifice meter (S/N \*67626902)

JOLLY ROGER 16 STATE #705H gas allocation meter is an Emerson orifice meter (S/N \*67626903)

JOLLY ROGER 16 STATE #706H gas allocation meter is an Emerson orifice meter (S/N \*67626904)

JOLLY ROGER 16 STATE #707H gas allocation meter is an Emerson orifice meter (S/N \*67626905)



JOLLY ROGER 16 STATE #708H gas allocation meter is an Emerson orifice meter (S/N \*67626906)

The oil from the separators will be measured using a Coriolis meter.

JOLLY ROGER 16 STATE #302H oil allocation meter is a FMC Coriolis meter (S/N \*10-74889)

JOLLY ROGER 16 STATE #303H oil allocation meter is a FMC Coriolis meter (S/N \*10-74890)

JOLLY ROGER 16 STATE #705H oil allocation meter is a FMC Coriolis meter (S/N \*10-76352)

JOLLY ROGER 16 STATE #706H oil allocation meter is a FMC Coriolis meter (S/N \*10-76353)

JOLLY ROGER 16 STATE #707H oil allocation meter is a FMC Coriolis meter (S/N \*10-76354))

JOLLY ROGER 16 STATE #708H oil allocation meter is a FMC Coriolis meter (S/N \*10-76355)

The water will be measured using a vortex meter. The water from each separator is combined in a common header and flows into (2) 750 barrel coated steel tanks. Guided wave radar is used to measure water volumes in these tanks. The oil from each separator will be combined into a common header and flow into a heated horizontal separator (HHS) to aid separation of water entrained in the oil. Water from the heated separator flows into the common water header connected to the (2) 750 barrel water tanks. The water is then pumped and/or trucked to a salt water disposal well. The oil from the heated separator flows through a vapor recovery tower (VRT) where gas is allowed to breakout at a lower pressure, and then the oil flows into (4) 750 barrel coated steel tanks. Guided wave radar is used to measure water and oil volumes in these tanks. Oil is pumped out of the tanks through a Coriolis meter into a truck or a pipeline. Every tank utilizes a guided wave radar to determine the volume of product in each. After the gas from each separator is measured it is combined into a common header. The gas from the heated separator also flows into this header. The gas flows through the header to a custody transfer orifice meter (#\*67626951) that serves as our lease production meter. If the pipeline is experiencing problems and cannot take any gas, the gas will flow through the high pressure flare meter (#\*67626956) to the flare. If an individual well needed to be flared for any operation reason it will be manually routed through the individual well flare meter (#\*67626957) to the flare. The overhead gas from the vapor recovery tower is compressed by a vapor recovery compressor and then measured by a custody transfer Emerson orifice meter (#\*67626986). The gas from the vapor recovery system combines with the gas from the lease production meter and flows into our gas gathering pipeline system.

\*Meter numbers will be provided upon installation of meters and completion of the facility.

## FACILITY NAME: JOLLY ROGER 16 STATE CTB

WELL NAME:  
JOLLY ROGER 16 STATE #30ZH  
API NUMBER:  
30-025-44622

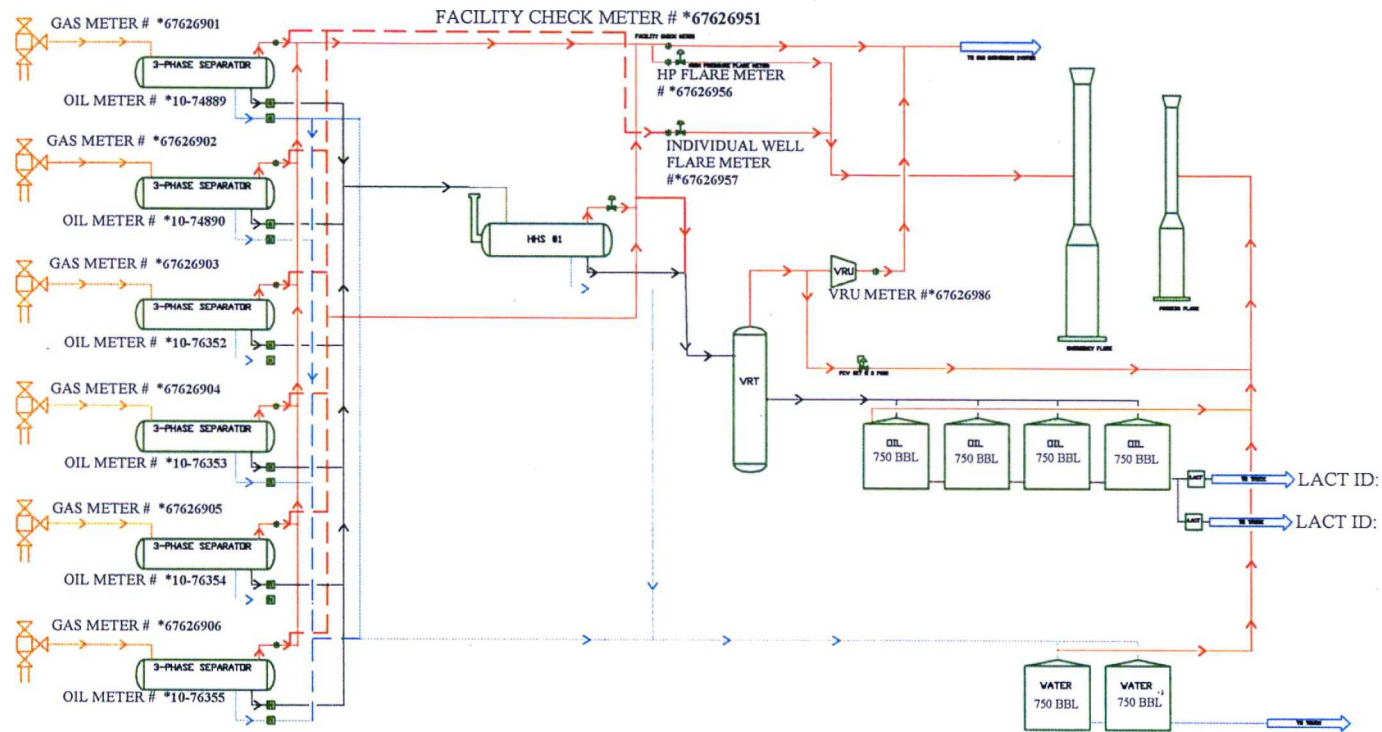
WELL NAME:  
JOLLY ROGER 16 STATE #303H  
API NUMBER:  
30-025-44623

WELL NAME:  
JOLLY ROGER 16 STATE #705H  
API NUMBER:  
30-025-45377

WELL NAME:  
JOLLY ROGER 16 STATE #706H  
API NUMBER:  
30-025-45378

WELL NAME:  
JOLLY ROGER 16 STATE #707H  
API NUMBER:  
30-025-45379

WELL NAME:  
JOLLY ROGER 16 STATE #708H  
API NUMBER:  
30-025-45380



JOLLY ROGER 16 STATE CTB PROCESS  
FLOW

EDG RESOURCES  
MIDLAND DIVISION

BY: EPF

rev. 00  
03/06/20

APPLICATION FOR, COMMINGLING AT A COMMON CENTRAL TANK BATTERY

Proposal **Jolly Roger 16 CTB:**

EOG Resources, Inc. is requesting approval to commingle the following wells in a common central tank battery:

**State Lease # NM VB-1744-0001**

<b>Well Name</b>	<b>Location</b>	<b>API #</b>	<b>Pool</b>	<b>Oil BPD</b>	<b>Gravities</b>	<b>MSCFPD</b>	<b>BTU</b>
JOLLY ROGER 16 STATE #302H	<b>C-16-24S-34E</b>	30-025-44622	<b>Red Hills; Bone Spring, North [96434]</b>	*1900	*44	*3200	*1333
JOLLY ROGER 16 STATE #303H	<b>C-16-24S-34E</b>	30-025-44623	<b>Red Hills; Bone Spring, North [96434]</b>	*1900	*44	*3200	*1333
JOLLY ROGER 16 STATE #705H	<b>M-16-24S-34E</b>	30-025-45377	<b>Antelope Ridge; Wolfcamp [2220]</b>	*1900	*44	*3200	*1333
JOLLY ROGER 16 STATE #706H	<b>M-16-24S-34E</b>	30-025-45378	<b>Antelope Ridge; Wolfcamp [2220]</b>	*1900	*44	*3200	*1333
JOLLY ROGER 16 STATE #707H	<b>N-16-24S-34E</b>	30-025-45379	<b>Antelope Ridge; Wolfcamp [2220]</b>	*1900	*44	*3200	*1333
JOLLY ROGER 16 STATE #708H	<b>N-16-24S-34E</b>	30-025-45380	<b>Antelope Ridge; Wolfcamp [2220]</b>	*1900	*44	*3200	*1333

\*Estimated numbers for these wells; will provide actual numbers once these wells are producing.



S:\SURVEY\EOG MIDLAND\JOLLY ROGER 16 STATE\FINAL PRODUCTS\NO JOLLYROGER16STATE 302H.DWG 3/12/2018 5:26:15 PM Istewart



District I  
1625 N. French Dr., Hobbs, NM 88240  
Phone: (575) 393-6161 Fax: (575) 393-0720  
District II  
811 S. First St., Artesia, NM 88210  
Phone: (575) 748-1283 Fax: (575) 748-9720  
District III  
1000 Rio Brazos Road, Aztec, NM 87410  
Phone: (505) 334-6178 Fax: (505) 334-6170  
District IV  
1220 S. St. Francis Dr., Santa Fe, NM 87505  
Phone: (505) 476-3460 Fax: (505) 476-3462

State of New Mexico  
Energy, Minerals & Natural Resources  
Department  
OIL CONSERVATION DIVISION  
1220 South St. Francis Dr.  
Santa Fe, NM 87505

FORM C-10:  
Revised August 1, 2011  
Submit one copy to appropriate  
District Office

☐ AMENDED REPORT

WELL LOCATION AND ACREAGE DEDICATION PLAT

<sup>1</sup> API Number 30-025- <b>44623</b>		<sup>2</sup> Pool Code 96434	<sup>3</sup> Pool Name Red Hills; Bone Spring, North
<sup>4</sup> Property Code 40398	<sup>5</sup> Property Name <b>JOLLY ROGER 16 STATE</b>		<sup>6</sup> Well Number <b>#303H</b>
<sup>7</sup> GRID No. 7377	<sup>8</sup> Operator Name <b>EOG RESOURCES, INC.</b>		<sup>9</sup> Elevation <b>3554'</b>

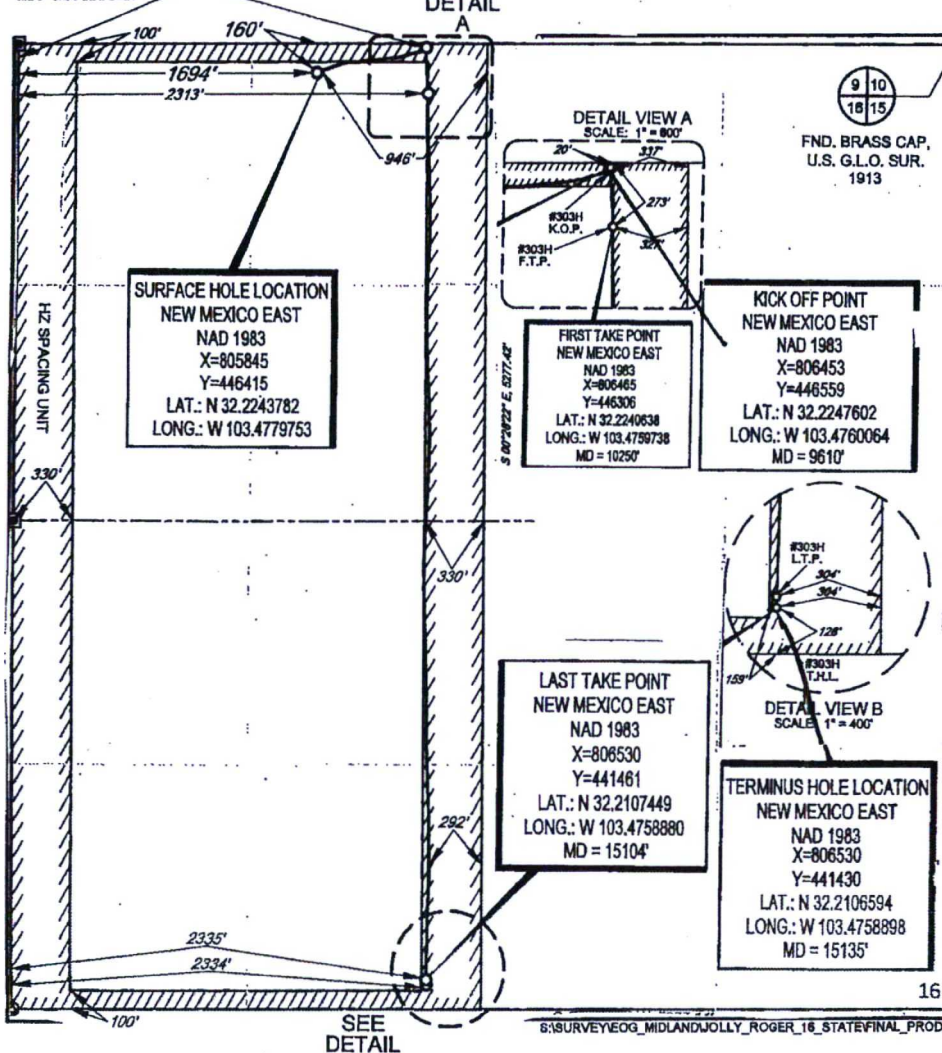
<sup>10</sup>Surface Location

UL or lot no.	Section	Township	Range	Lot Idn	Feet from the	North/South line	Feet from the	East/West line	County
C	16	24-S	34-E	-	160'	NORTH	1694'	WEST	LEA

UL or lot no.	Section	Township	Range	Lot Idn	Feet from the	North/South line	Feet from the	East/West line	County
N	16	24-S	34-E	-	128'	SOUTH	2334'	WEST	LEA

<sup>11</sup> Dedicated Acres <b>320</b>	<sup>12</sup> Joint or Infill	<sup>13</sup> Consolidation Code	<sup>14</sup> Order No.
---	-------------------------------	----------------------------------	-------------------------

No allowable will be assigned to this completion until all interests have been consolidated or a non-standard unit has been approved by the division.



<sup>17</sup>OPERATOR CERTIFICATION

I hereby certify that the information contained herein is true and complete to the best of my knowledge and belief, and that this organization either owns a working interest or undivided mineral interest in the land including the proposed bottom hole location, or has a right to drill this well at this location pursuant to a contract with an owner of such a mineral or working interest, or to a voluntary pooling agreement or a compulsory pooling order heretofore entered by the division.

*Kay Maddox* 3/11/19  
Signature Date

**KAY MADDOX**  
Printed Name

E-mail Address

<sup>18</sup>SURVEYOR CERTIFICATION

I hereby certify that the well location shown on this plat was plotted from field notes of actual surveys made by me or under my supervision, and that the same is true to the best of my belief.

02/10/2018  
Date of Survey  
Signature and Seal of Professional Surveyor  
**NEW MEXICO**  
**18329**  
**PROFESSIONAL SURVEYOR**  
Certificate Number



District I  
1625 N. French Dr., Hobbs, NM 88240  
Phone: (575) 393-6161 Fax: (575) 393-0720  
District II  
811 S. First St., Artesia, NM 88210  
Phone: (575) 748-1283 Fax: (575) 748-9720  
District III  
1000 Rio Brazos Road, Aztec, NM 87410  
Phone: (505) 334-6178 Fax: (505) 334-6170  
District IV  
1220 S. St. Francis Dr., Santa Fe, NM 87505  
Phone: (505) 476-3460 Fax: (505) 476-3462

State of New Mexico  
Energy, Minerals & Natural Resources  
Department  
OIL CONSERVATION DIVISION  
1220 South St. Francis Dr.  
Santa Fe, NM 87505

FORM C-102  
Revised August 1, 2011  
Submit one copy to appropriate  
District Office

☒ AMENDED REPORT

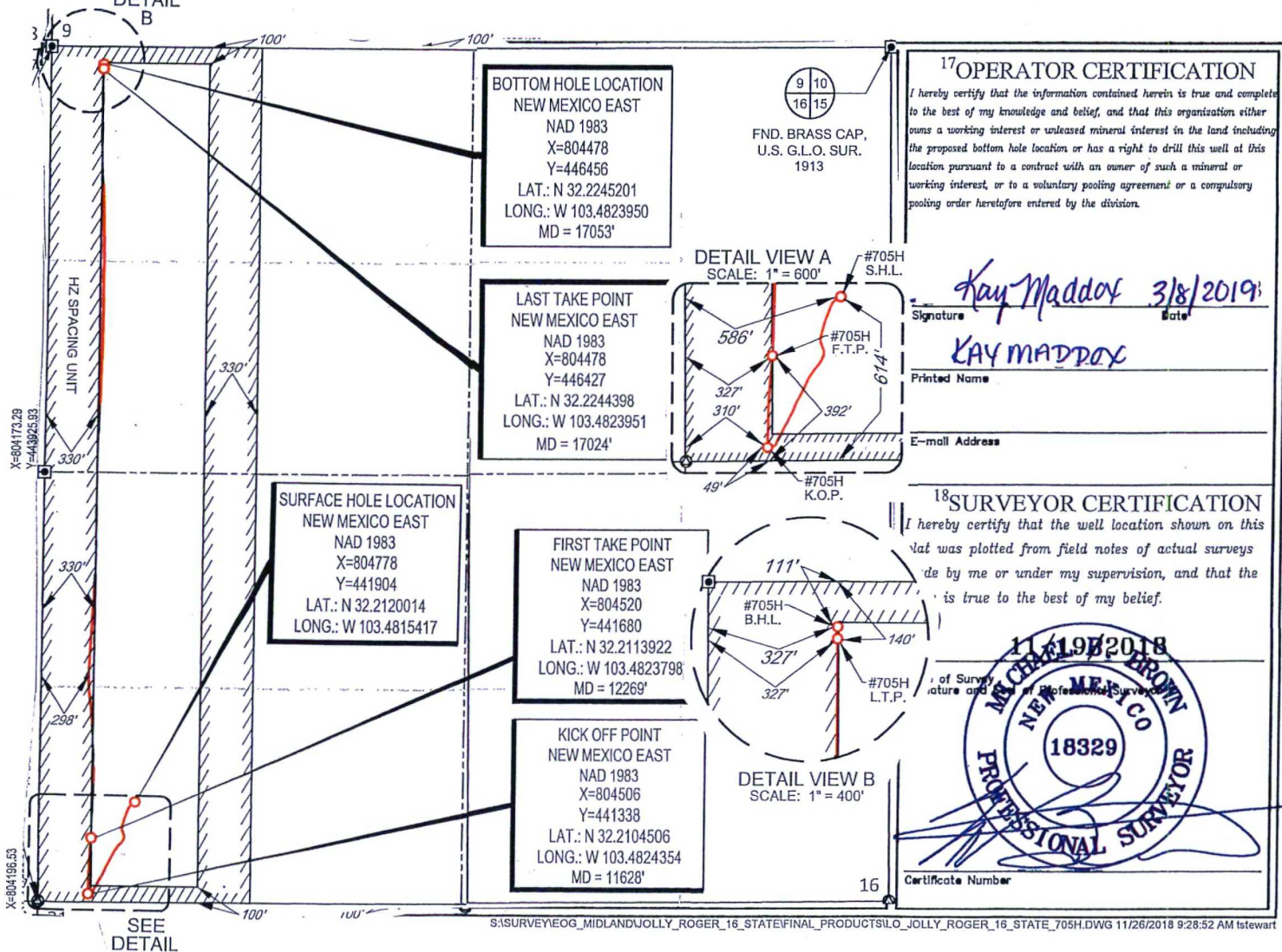
WELL LOCATION AND ACREAGE DEDICATION PLAT

<sup>1</sup> API Number 30-025- <b>45377</b>	<sup>2</sup> Pool Code 2220	<sup>3</sup> Pool Name Antelope Ridge; Wolfcamp
<sup>4</sup> Property Code 40398	<sup>5</sup> Property Name <b>JOLLY ROGER 16 STATE</b>	<sup>6</sup> Well Number <b>#705H</b>
<sup>7</sup> OGRID No. 7377	<sup>8</sup> Operator Name <b>EOG RESOURCES, INC.</b>	<sup>9</sup> Elevation <b>3536'</b>

<sup>10</sup> Surface Location									
UL or lot no.	Section	Township	Range	Lot Idn	Feet from the	North/South line	Feet from the	East/West line	County
<b>M</b>	<b>16</b>	<b>24-S</b>	<b>34-E</b>	<b>-</b>	<b>614'</b>	<b>SOUTH</b>	<b>586'</b>	<b>WEST</b>	<b>LEA</b>

<sup>11</sup> Bottom Hole Location If Different From Surface									
UL or lot no.	Section	Township	Range	Lot Idn	Feet from the	North/South line	Feet from the	East/West line	County
<b>D</b>	<b>16</b>	<b>24-S</b>	<b>34-E</b>	<b>-</b>	<b>111'</b>	<b>NORTH</b>	<b>327'</b>	<b>WEST</b>	<b>LEA</b>
<sup>12</sup> Dedicated Acres <b>140</b>	<sup>13</sup> Joint or Infill	<sup>14</sup> Consolidation Code	<sup>15</sup> Order No.						

No allow SEE DETAIL will be assigned to this completion until all interests have been consolidated or a non-standard unit has been approved by the division.





District I  
1625 N. French Dr., Hobbs, NM 88240  
Phone: (575) 393-6161 Fax: (575) 393-0720  
District II  
811 S. First St., Artesia, NM 88210  
Phone: (575) 748-1283 Fax: (575) 748-9720  
District III  
1000 Rio Brazos Road, Aztec, NM 87410  
Phone: (505) 334-6178 Fax: (505) 334-6170  
District IV  
1220 S. St. Francis Dr., Santa Fe, NM 87505  
Phone: (505) 476-3460 Fax: (505) 476-3462

State of New Mexico  
Energy, Minerals & Natural Resources  
Department  
OIL CONSERVATION DIVISION  
1220 South St. Francis Dr.  
Santa Fe, NM 87505

FORM C-102  
Revised August 1, 2011  
Submit one copy to appropriate  
District Office

☒ AMENDED REPORT

WELL LOCATION AND ACREAGE DEDICATION PLAT

<sup>1</sup> API Number 30-025- <b>45378</b>	<sup>2</sup> Pool Code 2220	<sup>3</sup> Pool Name Antelope Ridge; Wolfcamp
<sup>4</sup> Property Code 40398	<sup>5</sup> Property Name <b>JOLLY ROGER 16 STATE</b>	<sup>6</sup> Well Number <b>#706H</b>
<sup>7</sup> OGRID No. 7377	<sup>8</sup> Operator Name <b>EOG RESOURCES, INC.</b>	<sup>9</sup> Elevation <b>3536'</b>

<sup>10</sup>Surface Location

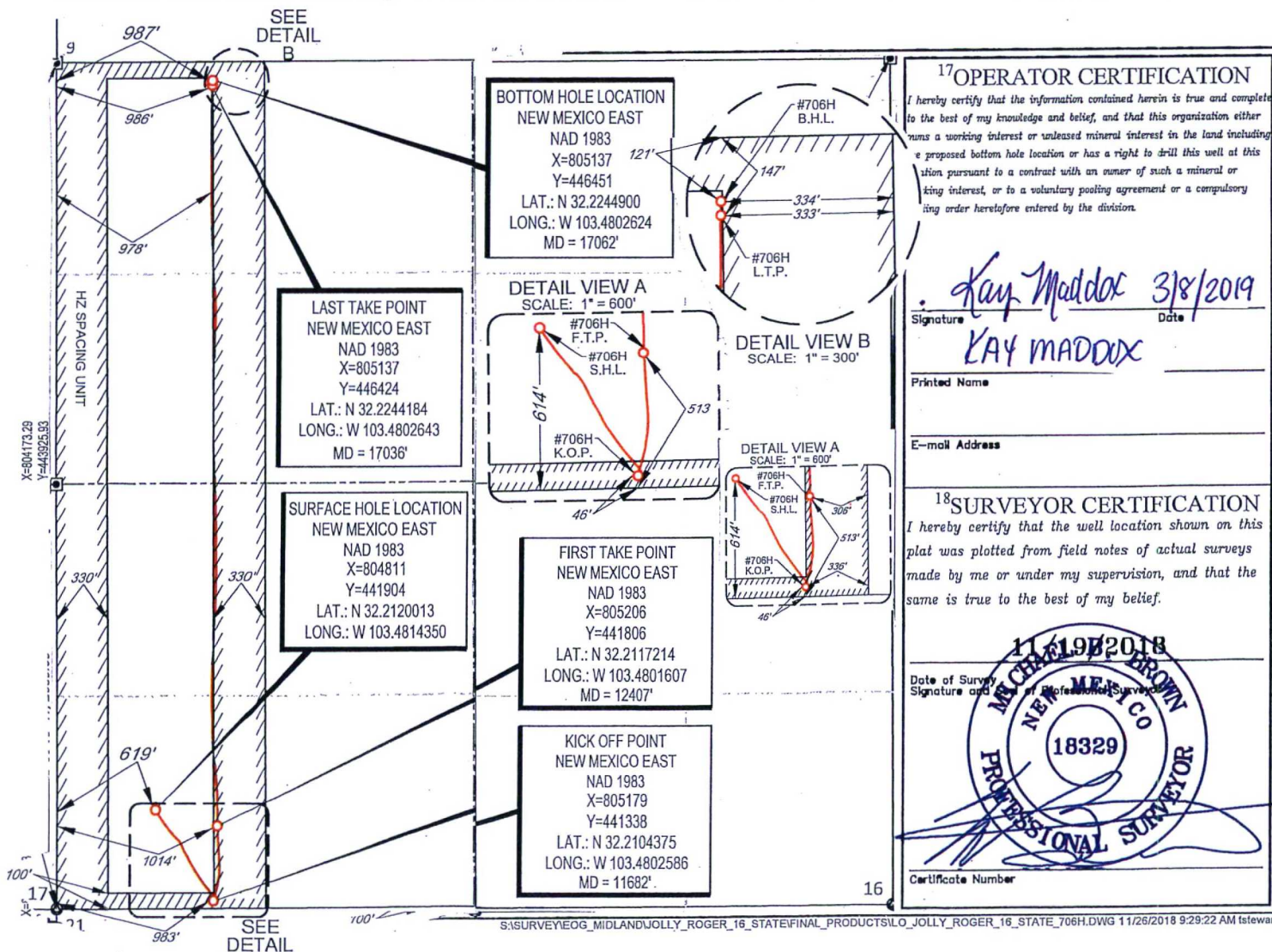
UL or lot no.	Section	Township	Range	Lot Idn	Feet from the	North/South line	Feet from the	East/West line	County
<b>M</b>	<b>16</b>	<b>24-S</b>	<b>34-E</b>	<b>-</b>	<b>614'</b>	<b>SOUTH</b>	<b>619'</b>	<b>WEST</b>	<b>LEA</b>

<sup>11</sup>Bottom Hole Location If Different From Surface

UL or lot no.	Section	Township	Range	Lot Idn	Feet from the	North/South line	Feet from the	East/West line	County
<b>D</b>	<b>16</b>	<b>24-S</b>	<b>34-E</b>	<b>-</b>	<b>121'</b>	<b>NORTH</b>	<b>987'</b>	<b>WEST</b>	<b>LEA</b>

<sup>12</sup> Dedicated Acres <b>160</b>	<sup>13</sup> Joint or Infill	<sup>14</sup> Consolidation Code	<sup>15</sup> Order No.
---	-------------------------------	----------------------------------	-------------------------

No allowable will be assigned to this completion until all interests have been consolidated or a non-standard unit has been approved by the division.





District I  
1625 N. French Dr., Hobbs, NM 88240  
Phone: (575) 393-6161 Fax: (575) 393-0720  
District II  
811 S. First St., Artesia, NM 88210  
Phone: (575) 748-1283 Fax: (575) 748-9720  
District III  
1000 Rio Brazos Road, Aztec, NM 87410  
Phone: (505) 334-6178 Fax: (505) 334-6170  
District IV  
1220 S. St. Francis Dr., Santa Fe, NM 87505  
Phone: (505) 476-3460 Fax: (505) 476-3462

State of New Mexico  
Energy, Minerals & Natural Resources  
Department  
OIL CONSERVATION DIVISION  
1220 South St. Francis Dr.  
Santa Fe, NM 87505

FORM C-102  
Revised August 1, 2011  
Submit one copy to appropriate  
District Office

☒ AMENDED REPORT

WELL LOCATION AND ACREAGE DEDICATION PLAT

<sup>1</sup> API Number 30-025- <b>45379</b>	<sup>2</sup> Pool Code 2220	<sup>3</sup> Pool Name Antelope Ridge; Wolfcamp
<sup>4</sup> Property Code 40398	<sup>5</sup> Property Name <b>JOLLY ROGER 16 STATE</b>	
<sup>7</sup> GRID No. 7377	<sup>8</sup> Operator Name <b>EOG RESOURCES, INC.</b>	<sup>6</sup> Well Number <b>#707H</b>
		<sup>9</sup> Elevation <b>3530'</b>

<sup>10</sup>Surface Location

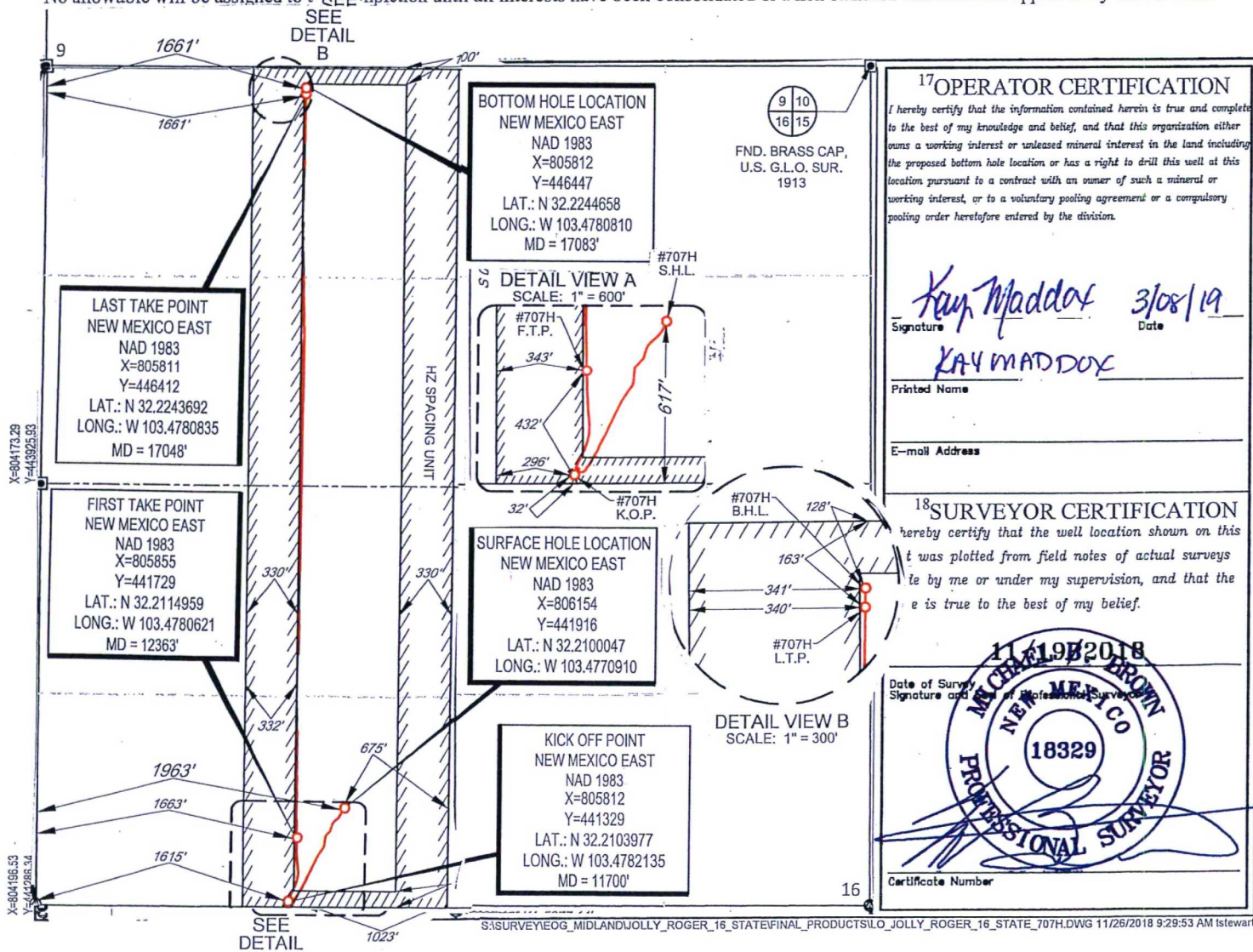
UL or lot no.	Section	Township	Range	Lot Idn	Feet from the	North/South line	Feet from the	East/West line	County
<b>N</b>	<b>16</b>	<b>24-S</b>	<b>34-E</b>	<b>-</b>	<b>617'</b>	<b>SOUTH</b>	<b>1963'</b>	<b>WEST</b>	<b>LEA</b>

<sup>11</sup>Bottom Hole Location If Different From Surface

UL or lot no.	Section	Township	Range	Lot Idn	Feet from the	North/South line	Feet from the	East/West line	County
<b>C</b>	<b>16</b>	<b>24-S</b>	<b>34-E</b>	<b>-</b>	<b>128'</b>	<b>NORTH</b>	<b>1661'</b>	<b>WEST</b>	<b>LEA</b>

<sup>12</sup> Dedicated Acres <b>160</b>	<sup>13</sup> Joint or Infill	<sup>14</sup> Consolidation Code	<sup>15</sup> Order No.
---	-------------------------------	----------------------------------	-------------------------

No allowable will be assigned to this completion until all interests have been consolidated or a non-standard unit has been approved by the division.





S:\SURVEY\EOG MIDLAND\JOLLY ROGER 16 STATE\FINAL PRODUCTS\LO JOLLY ROGER 16 STATE 708H.DWG 11/26/2018 9:30:31 AM tstewart



P.O. Box 2267, Midland, Texas 79702  
Phone: (432) 686-3720

Date: March 25, 2019

To: State of New Mexico Oil Conservation Division  
New Mexico State Land Office

Re: Surface Pool Commingling Application; Jolly Roger 16 CTB: Jolly Roger  
16 Sate 302H, 303H, 705H, 706H, 707H, 708H

To whom it may concern:

This letter serves to notice you that the ownership of the following wells is identical in working, royalty, overriding royalty interest and percentages as defined in 19.15.12.7 NMAC:

Well Name	Location	API #	Pool	Status
JOLLY ROGER 16 STATE #302H	C-16-24S-34E	30-025-44622	Red Hills; Bone Spring South [96434]	Permitted
JOLLY ROGER 16 STATE #303H	C-16-24S-34E	30-025-44623	Red Hills; Bone Spring South [96434]	Permitted
JOLLY ROGER 16 STATE #705H	M-16-24S-34E	30-025-45377	Antelope Ridge; Wolfcamp [2220]	Permitted
JOLLY ROGER 16 STATE #706H	M-16-24S-34E	30-025-45378	Antelope Ridge; Wolfcamp [2220]	Permitted
JOLLY ROGER 16 STATE #707H	N-16-24S-34E	30-025-45379	Antelope Ridge; Wolfcamp [2220]	Permitted
JOLLY ROGER 16 STATE #708H	N-16-24S-34E	30-025-45380	Antelope Ridge; Wolfcamp [2220]	Permitted

I certify that this information is true and correct to the best of my knowledge.

Sincerely,

**EOG Resources, Inc.**

By: \_\_\_\_\_

  
Chuck Bassett  
Land Specialist