



# AE Order Number Banner

1983 - 1985

UNIVERSITY OF NEW MEXICO  
LIBRARY

10-1-1985  
10-1-1985  
10-1-1985  
10-1-1985

## Report Description

This report shows an AE Order Number in Barcode format for purposes of scanning. The Barcode format is Code 39.

Amoco Production Company  
P. O. Box 68  
Hobbs, New Mexico

Attention:

Gentlemen:

Under the provisions of the New Mexico Oil and Gas Conservation Act, Amoco Production Company made an application to the Division of Energy and Minerals for a permit to drill and operate directional wells in the Hobbs area and the surrounding area.



Amoco Production Company made an application to the Division of Energy and Minerals for a permit to drill and operate directional wells in the Hobbs area and the surrounding area.

**App Number: pDD00000092002**

The Division of Energy and Minerals has reviewed the application and has determined that the application meets the requirements of the New Mexico Oil and Gas Conservation Act.

(1) The application meets the requirements of the New Mexico Oil and Gas Conservation Act, and the provisions of the New Mexico Oil and Gas Conservation Regulations.

(2) The application meets the requirements of the New Mexico Oil and Gas Conservation Act, and the provisions of the New Mexico Oil and Gas Conservation Regulations.

(3) The application meets the requirements of the New Mexico Oil and Gas Conservation Act, and the provisions of the New Mexico Oil and Gas Conservation Regulations.

(4) The application meets the requirements of the New Mexico Oil and Gas Conservation Act, and the provisions of the New Mexico Oil and Gas Conservation Regulations.

**DD - 9**

**AMOCO PRODUCTION CO**

1/7/2011

STANDARDIZATION OF THE DEPT. OF THE ARMY  
 1917-1918

1917-1918: 1917-1918: 1917-1918:  
 1917-1918: 1917-1918: 1917-1918:  
 1917-1918: 1917-1918: 1917-1918:  
 1917-1918: 1917-1918: 1917-1918:  
 1917-1918: 1917-1918: 1917-1918:

1917-1918: 1917-1918: 1917-1918:  
 1917-1918: 1917-1918: 1917-1918:

1917-1918: 1917-1918: 1917-1918:  
 1917-1918: 1917-1918: 1917-1918:  
 1917-1918: 1917-1918: 1917-1918:  
 1917-1918: 1917-1918: 1917-1918:  
 1917-1918: 1917-1918: 1917-1918:

1917-1918: 1917-1918: 1917-1918:  
 1917-1918: 1917-1918: 1917-1918:

1917-1918: 1917-1918: 1917-1918:  
 1917-1918: 1917-1918: 1917-1918:  
 1917-1918: 1917-1918: 1917-1918:  
 1917-1918: 1917-1918: 1917-1918:  
 1917-1918: 1917-1918: 1917-1918:

1917-1918: 1917-1918: 1917-1918:  
 1917-1918: 1917-1918: 1917-1918:

1917-1918: 1917-1918: 1917-1918:

1917-1918: 1917-1918: 1917-1918:

STANDARDIZATION OF THE DEPT. OF THE ARMY

STANDARDIZATION OF THE DEPT. OF THE ARMY



TONEY ANAYA  
GOVERNOR

STATE OF NEW MEXICO  
ENERGY AND MINERALS DEPARTMENT  
OIL CONSERVATION DIVISION

Date OCTOBER 1, 1985  
~~SEPTEMBER 17, 1985~~

8800  
Release OCT. 1, 1985

POST OFFICE BOX 2088  
STATE LAND OFFICE BUILDING  
SANTA FE, NEW MEXICO 87501  
(505) 827-5800

Operator AMOCO PRODUCTION COMPANY  
P.O. BOX 68  
HOBBS, NEW MEXICO 88240

Attention: L. R. SMITH, DISTRICT MANAGER

ADMINISTRATIVE ORDER DD- 9- (SNSL)

Gentlemen:

Under the provisions of Rule 111 (C) and (D), AMOCO PRODUCTION COMPANY made application to the New Mexico Oil Conservation Division on SEPTEMBER 16, 1985, for permission to directionally drill and complete for PRODUCTION the THREE WELLS LISTED IN EXHIBIT "A", attached hereto and made a part thereof.  
The Division Director Finds That:

(1) The application has been duly filed under the provisions of Rule 111 (D) of the Division Rules and Regulations;

(2) Satisfactory information has been provided that all offset operators have been duly notified;

(3) THE APPLICANT, AMOCO PRODUCTION COMPANY, IS THE OWNER AND OPERATOR OF SAID WELLS, THE UNORTHODOX SURFACE LOCATIONS OF WHICH ARE LISTED ON THE EXHIBIT "A".

(4) THE APPLICANT SEEKS TO DIRECTIONALLY DRILL SAID WELLS BY KICKING OFF FROM VERTICAL AT A DEPTH OF APPROXIMATELY 1700 FEET ON WELL NOS 197 AND 198 AND APPROXIMATELY 3000 FEET ON WELL NO. 202, DRILLING IN SUCH A MANNER AS TO PENETRATE THE GRAYBURG-SAN ANDRES FORMATIONS WITHIN 50 FEET OF THE PROPOSED BOTTOMHOLE LOCATION OF EACH WELL

(5) THE ACREAGE LISTED ON ~~THE~~ EXHIBIT "A" SHOULD BE DEDICATED TO EACH SPECIFIED WELL.

1990

[illegible]

1997, 1998, 1999, 2000, 2001, 2002, 2003, 2004, 2005, 2006, 2007, 2008, 2009, 2010, 2011, 2012, 2013, 2014, 2015, 2016, 2017, 2018, 2019, 2020, 2021, 2022, 2023, 2024, 2025, 2026, 2027, 2028, 2029, 2030, 2031, 2032, 2033, 2034, 2035, 2036, 2037, 2038, 2039, 2040, 2041, 2042, 2043, 2044, 2045, 2046, 2047, 2048, 2049, 2050, 2051, 2052, 2053, 2054, 2055, 2056, 2057, 2058, 2059, 2060, 2061, 2062, 2063, 2064, 2065, 2066, 2067, 2068, 2069, 2070, 2071, 2072, 2073, 2074, 2075, 2076, 2077, 2078, 2079, 2080, 2081, 2082, 2083, 2084, 2085, 2086, 2087, 2088, 2089, 2090, 2091, 2092, 2093, 2094, 2095, 2096, 2097, 2098, 2099, 2100, 2101, 2102, 2103, 2104, 2105, 2106, 2107, 2108, 2109, 2110, 2111, 2112, 2113, 2114, 2115, 2116, 2117, 2118, 2119, 2120, 2121, 2122, 2123, 2124, 2125, 2126, 2127, 2128, 2129, 2130, 2131, 2132, 2133, 2134, 2135, 2136, 2137, 2138, 2139, 2140, 2141, 2142, 2143, 2144, 2145, 2146, 2147, 2148, 2149, 2150, 2151, 2152, 2153, 2154, 2155, 2156, 2157, 2158, 2159, 2160, 2161, 2162, 2163, 2164, 2165, 2166, 2167, 2168, 2169, 2170, 2171, 2172, 2173, 2174, 2175, 2176, 2177, 2178, 2179, 2180, 2181, 2182, 2183, 2184, 2185, 2186, 2187, 2188, 2189, 2190, 2191, 2192, 2193, 2194, 2195, 2196, 2197, 2198, 2199, 2200, 2201, 2202, 2203, 2204, 2205, 2206, 2207, 2208, 2209, 2210, 2211, 2212, 2213, 2214, 2215, 2216, 2217, 2218, 2219, 2220, 2221, 2222, 2223, 2224, 2225, 2226, 2227, 2228, 2229, 2230, 2231, 2232, 2233, 2234, 2235, 2236, 2237, 2238, 2239, 2240, 2241, 2242, 2243, 2244, 2245, 2246, 2247, 2248, 2249, 2250, 2251, 2252, 2253, 2254, 2255, 2256, 2257, 2258, 2259, 2260, 2261, 2262, 2263, 2264, 2265, 2266, 2267, 2268, 2269, 2270, 2271, 2272, 2273, 2274, 2275, 2276, 2277, 2278, 2279, 2280, 2281, 2282, 2283, 2284, 2285, 2286, 2287, 2288, 2289, 2290, 2291, 2292, 2293, 2294, 2295, 2296, 2297, 2298, 2299, 2300, 2301, 2302, 2303, 2304, 2305, 2306, 2307, 2308, 2309, 2310, 2311, 2312, 2313, 2314, 2315, 2316, 2317, 2318, 2319, 2320, 2321, 2322, 2323, 2324, 2325, 2326, 2327, 2328, 2329, 2330, 2331, 2332, 2333, 2334, 2335, 2336, 2337, 2338, 2339, 2340, 2341, 2342, 2343, 2344, 2345, 2346, 2347, 2348, 2349, 2350, 2351, 2352, 2353, 2354, 2355, 2356, 2357, 2358, 2359, 2360, 2361, 2362, 2363, 2364, 2365, 2366, 2367, 2368, 2369, 2370, 2371, 2372, 2373, 2374, 2375, 2376, 2377, 2378, 2379, 2380, 2381, 2382, 2383, 2384, 2385, 2386, 2387, 2388, 2389, 2390, 2391, 2392, 2393, 2394, 2395, 2396, 2397, 2398, 2399, 2400, 2401, 2402, 2403, 2404, 2405, 2406, 2407, 2408, 2409, 2410, 2411, 2412, 2413, 2414, 2415, 2416, 2417, 2418, 2419, 2420, 2421, 2422, 2423, 2424, 2425, 2426, 2427, 2428, 2429, 2430, 2431, 2432, 2433, 2434, 2435, 2436, 2437, 2438, 2439, 2440, 2441, 2442, 2443, 2444, 2445, 2446, 2447, 2448, 2449, 2450, 2451, 2452, 2453, 2454, 2455, 2456, 2457, 2458, 2459, 2460, 2461, 2462, 2463, 2464, 2465, 2466, 2467, 2468, 2469, 2470, 2471, 2472, 2473, 2474, 2475, 2476, 2477, 2478, 2479, 2480, 2481, 2482, 2483, 2484, 2485, 2486, 2487, 2488, 2489, 2490, 2491, 2492, 2493, 2494, 2495, 2496, 2497, 2498, 2499, 2500, 2501, 2502, 2503, 2504, 2505, 2506, 2507, 2508, 2509, 2510, 2511, 2512, 2513, 2514, 2515, 2516, 2517, 2518, 2519, 2520, 2521, 2522, 2523, 2524, 2525, 2526, 2527, 2528, 2529, 2530, 2531, 2532, 2533, 2534, 2535, 2536, 2537, 2538, 2539, 2540, 2541, 2542, 2543, 2544, 2545, 2546, 2547, 2548, 2549, 2550, 2551, 2552, 2553, 2554, 2555, 2556, 2557, 2558, 2559, 2560, 2561, 2562, 2563, 2564, 2565, 2566, 2567, 2568, 2569, 2570, 2571, 2572, 2573, 2574, 2575, 2576, 2577, 2578, 2579, 2580, 2581, 2582, 2583, 2584, 2585, 2586, 2587, 2588, 2589, 2590, 2591, 2592, 2593, 2594, 2595, 2596, 2597, 2598, 2599, 2600, 2601, 2602, 2603, 2604, 2605, 2606, 2607, 2608, 2609, 2610, 2611, 2612, 2613, 2614, 2615, 2616, 2617, 2618, 2619, 2620, 2621, 2622, 2623, 2624, 2625, 2626, 2627, 2628, 2629, 2630, 2631, 2632, 2633, 2634, 2635, 2636, 2637, 2638, 2639, 2640, 2641, 2642, 2643, 2644, 2645, 2646, 2647, 2648, 2649, 2650, 2651, 2652, 2653, 2654, 2655, 2656, 2657, 2658, 2659, 2660, 2661, 2662, 2663, 2664, 2665, 2666, 2667, 2668, 2669, 2670, 2671, 2672, 2673, 2674, 2675, 2676, 2677, 2678, 26

**Figure 1**

[illegible][illegible]

1947-1948

(5) The \_\_\_\_\_ of Section \_\_\_\_\_ should be dedicated to the well.

(6) The applicant should be required to determine the subsurface location of the bottom of the hole by means of a continuous multi-shot directional survey conducted subsequent to said directional drilling, if said wells ~~are~~<sup>are</sup> to be completed as • producing wells.

(7) Approval of the subject application will prevent the drilling of unnecessary wells, avoid the augmentation of risk arising from the drilling of an excessive number of wells, and otherwise prevent waste and protect correlative rights.

IT IS THEREFORE ORDERED THAT:

(1) THE APPLICANT, AMOCO PRODUCTION COMPANY, IS HEREBY AUTHORIZED TO DIRECTIONALLY DRILL SAID WELLS LISTED ON THE EXHIBIT "A". THE SURFACE AND BOTTOM HOLE LOCATIONS FOR EACH WELL ARE ALSO LISTED ON THE EXHIBIT "A". ALL THREE WELLS WILL BE COMPLETED IN THE HOBBS GRAYBURG - SAN ANDRES POOL AND WILL BE DRILLED VERTICALLY TO A KICK OFF DEPTH OF APPROXIMATELY 1700 FEET IN WELL NO'S 197 and 198 and approximately 3000 Feet in well No. 202. Drilling should be performed in such a manner as to penetrate the Grayburg - San Andres Formations within 50 feet of the target bottomhole location for each well.

NOTE OTHER PARAGRAPHS UNDERNEATH

(2) Form C-105 shall be filed in accordance with Division Rule 1105 and the operator shall indicate thereon true vertical depth in addition to measured depths.

(3) The ACREAGE LISTED IN EXHIBIT "A" of said Section shall be dedicated to the subject well.  
EACH SPECIFIED

(4) Jurisdiction of this cause is retained for the entry of such further orders as the Division may deem necessary.

DONE at Santa Fe, New Mexico, on the day and year hereinabove designated.

STATE OF NEW MEXICO  
OIL CONSERVATION DIVISION

R. L. STAMETS,  
~~Acting~~ Director

S E A L

(GRAYBURG - SAN ANDRES)

SOUTH HOBBS UNIT EXPANSION

DIRECTIONAL DRILL WELLS

WELL NAME AND LOCATION

DEDICATED ACREAGE

WELL NO. ~~196~~ 197

2030' FSL & 860' FWL (SURFACE)

NW/4 SW/4 OF SECTION 34

2600' FSL & 689' FWL (BOTTOM HOLE)

SEC. 34, T18S, R38E, LEA CO.

WELL NO. 198

749' FHL & 1981' FWL (SURFACE)

990' FHL & 1622' FWL (BOTTOM HOLE)

NE/4 NW/4 OF SECTION 6

SEC. 6, T19S, R38E, LEA CO.

WELL NO. 202

1650' FSL & 1100' FEL (SURFACE)

NE/4 SE/4 OF SECTION 6

1650' FSL & 990' FEL (BOTTOM HOLE)

SEC. 6, T19S, R38E, LEA CO.

NOTE: All surface location are nonstandard (SNSL) and all bottom hole locations are standard.

EXHIBIT "A"

ADMINISTRATIVE ORDER DD-9 (SNSL)



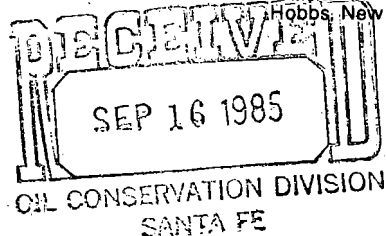




**Amoco Production Company**

Post Office Box 68  
Hobbs, New Mexico 88240

L. R. Smith  
District Manager



September 11, 1985

File: SGH-1762-416

Re: Application for Unorthodox Locations  
and Directionally Drilled Wells  
South Hobbs (GSA) Unit Westside Development  
Hobbs Grayburg-San Andres Pool  
Lea County, New Mexico

State of New Mexico  
Energy and Minerals Department  
Oil Conservation Division  
P. O. Box 2088  
Santa Fe, NM 87501

Amoco Production Company hereby requests administrative approval to develop the westside of the South Hobbs Unit Pressure Maintenance Project by drilling six Grayburg-San Andres producers. Of these six wells, three are located at unorthodox locations and three will be directionally drilled. This application contains the request for approval of three unorthodox locations and three directionally drilled exceptions.

Exhibit "A" is a tabulation of the six proposed drilling locations. The three wells which will be drilled at unorthodox locations within the unit are so noted. On the three wells which will be directionally drilled, the proposed bottom hole location, kick-off point, and projected bottomhole deviation are listed. Ground elevation is listed for each well. A South Hobbs (GSA) Unit map is included with the proposed drilling sites (both surface and bottomhole) shown. Also, we have included a copy of the individual well plats (C-102).

The availability of suitable surface locations for three South Hobbs (GSA) Unit wells are very limited. To obtain the necessary bottomhole locations, these wells must be directionally drilled from the closest available property. See Exhibit "B" for specific reasons.

September 11, 1985  
File: SGH-1762-416  
Page 2

Unorthodox surface locations are required to obtain optimum pattern geometry. This optimum geometry is necessary to most efficiently develop and produce the Grayburg-San Andres along the westside of the Unit.

Required notice of this application has been served by certified mail to each operator of proration or spacing units offsetting the unit for which directional drilling exceptions and unorthodox locations are sought. Each party shown on the attached service list has been furnished a copy of this letter complete with all attachments.

If you have any questions concerning this application, please contact Charles Herring in our Hobbs District Office, (505) 393-1781, Extension 252.

*L. R. Smith* /SGN

CMH/sh  
APRD04-AAA

Enclosures

cc: State of New Mexico  
Oil Conservation Division  
P. O. Box 1980  
Hobbs, NM 88240

SERVICE LIST  
SOUTH HOBBS (GSA) UNIT  
WESTSIDE DEVELOPMENT

Offset Operators

Gulf Oil Exploration & Prod. Co.  
P. O. Box 1150  
Midland, TX 79702

Shell Western E&P, Inc.  
P. O. Box 991  
Houston, TX 77001

EXHIBIT "A"  
SOUTH HOBBS (GSA) UNIT

<u>Well Name</u>	<u>Surface Location</u>	<u>Bottomhole Location</u>	<u>Kick-Off Point Below Surface</u>	<u>Bottomhole Deviations</u>	<u>Elevation (Ground Level)</u>
SHU No. 197	2030' FSL x 860' FWL, Sec. 34, T-18-S, R-38-E	2600' FSL x 689' FWL, Sec. 34, T-18-S, R-38-E	Approx. 1700'	595'	3625.2'
SHU No. 198	749' FNL x 1981' FWL, Sec. 6, T-19-S, R-38-E	990' FNL x 1622' FWL, Sec. 6, T-19-S, R-38-E	Approx. 1700'	432'	3637.1'
SHU No. 199	1028' FNL x 2310' FEL, Sec. 6, T-19-S, R-38-E	Same as surface			3630.2'
SHU No. 201	2310' FNL x 1028' FEL, Sec. 6, T-19-S, R-38-E	Same as surface			3628.5'
SHU No. 202	1650' FSL x 1100' FEL, Sec. 6, T-19-S, R-38-E	1650' FSL x 990' FEL, Sec. 6, T-19-S, R-38-E	Approx. 3000'	110'	3617.3'
SHU No. 203	1568' FSL x 248' FWL, Sec. 5, T-19-S, R-38-E	Same as surface			3615.5'

EXHIBIT "B"

REASONS FOR DIRECTIONALLY DRILLING AND/OR  
UNORTHODOX LOCATIONS

<u>Well Number</u>	<u>Reason for Deviation</u>
SHU No. 197	Surface location is in the middle of a residential area within the Hobbs City limits. Proposed location is on the corner of Leech and Taylor Streets.
SHU No. 198	Bottomhole location is directly beneath a state-owned caliche pit.
SHU No. 199	Optimum pattern geometry.
SHU No. 201	Optimum pattern geometry.
SHU No. 202	Too close to buried high pressure gas lines.
SHU No. 203	Optimum pattern geometry.

CMH/sh  
APRD04-AAA(5)

**NEW MEXICO OIL CONSERVATION COMMISSION  
WELL LOCATION AND ACREAGE DEDICATION PLAT**

Form C-102  
Supersedes C-128  
Effective 1-1-65

All distances must be from the outer boundaries of the Section.

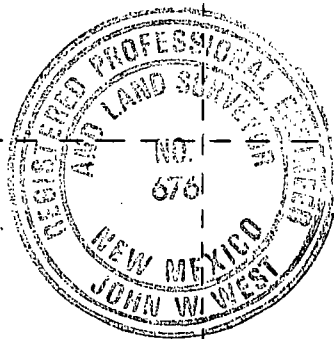
Operator <b>AMOCO PRODUCTION COMPANY</b>			Lease <b>SOUTH HOBBS GRAYBURG SAN ANDRES UNIT</b>		Well No. <b>197</b>
Unit Letter <b>L</b>	Section <b>34</b>	Township <b>18 SOUTH</b>	Range <b>38 EAST</b>	County <b>LEA</b>	
Actual Footage Location of Well: <b>2030</b> feet from the <b>SOUTH</b> line and <b>860</b> feet from the <b>WEST</b> line					
Ground Level Elev. <b>3625.2'</b>	Producing Formation <b>Grayburg-San Andres</b>		Pool <b>Hobbs GSA</b>		Dedicated Acreage: <b>40</b> Acres

1. Outline the acreage dedicated to the subject well by colored pencil or hachure marks on the plat below.
2. If more than one lease is dedicated to the well, outline each and identify the ownership thereof (both as to working interest and royalty).
3. If more than one lease of different ownership is dedicated to the well, have the interests of all owners been consolidated by communitization, unitization, force-pooling, etc?

☐ Yes ☐ No If answer is "yes," type of consolidation \_\_\_\_\_

If answer is "no," list the owners and tract descriptions which have actually been consolidated. (Use reverse side of this form if necessary.) \_\_\_\_\_

No allowable will be assigned to the well until all interests have been consolidated (by communitization, unitization, forced-pooling, or otherwise) or until a non-standard unit, eliminating such interests, has been approved by the Commission.



NOTE: BOTTOM HOLE  
LOCATION WILL BE  
2600' F.S.L. & 689'  
F.W.L.

**CERTIFICATION**

I hereby certify that the information contained herein is true and complete to the best of my knowledge and belief.

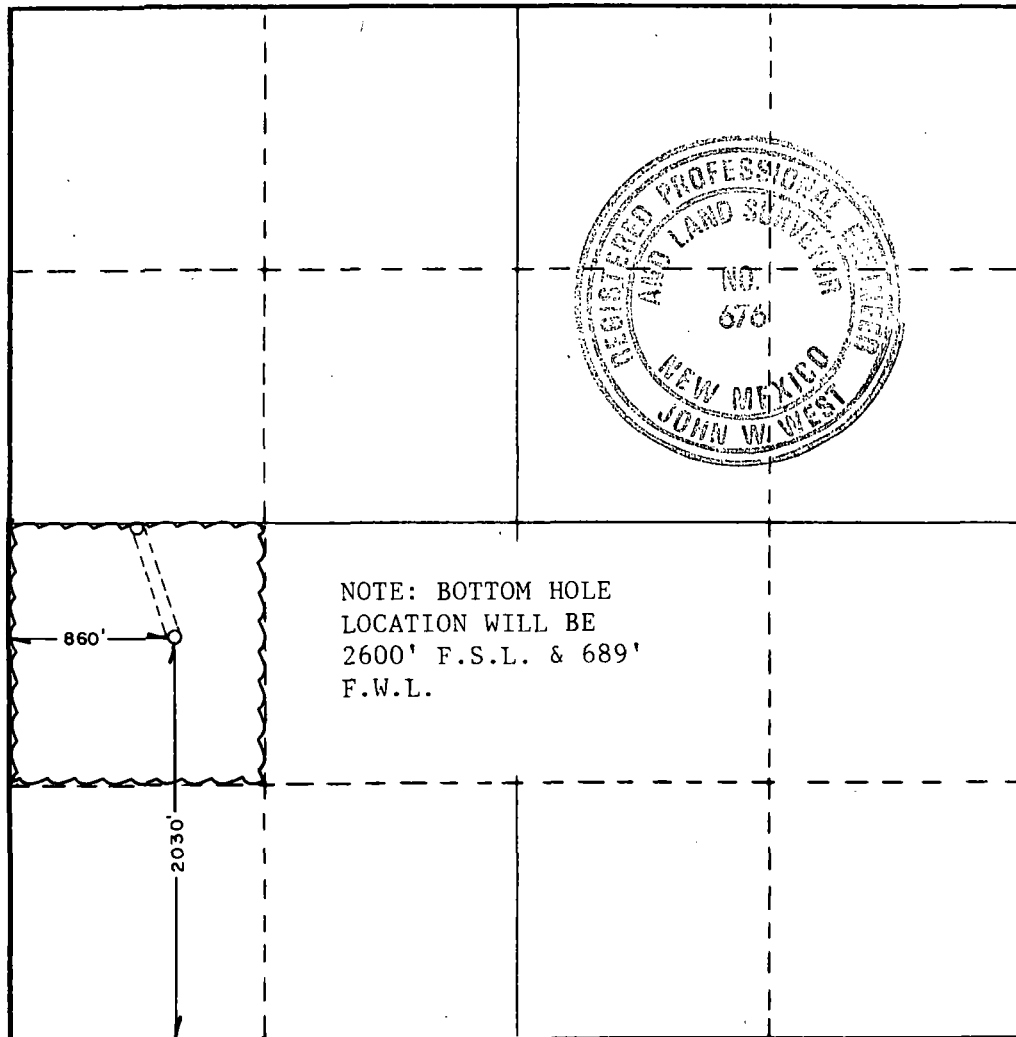
Name *Charles M. Lanning*  
Position  
**Administrative Analyst (80)**  
Company  
**Amoco Production Company**  
Date  
**September 11, 1985**

I hereby certify that the well location shown on this plat was plotted from field notes of actual surveys made by me or under my supervision, and that the same is true and correct to the best of my knowledge and belief.

Date Surveyed  
**AUGUST 15, 1985**

Registered Professional Engineer  
and/or Land Surveyor

*John W. West*  
Certificate No. **JOHN W. WEST, 676**  
**RONALD J. EIDSON, 3239**



**NEW MEXICO OIL CONSERVATION COMMISSION  
WELL LOCATION AND ACREAGE DEDICATION PLAT**

Form C-102  
Supersedes C-128  
Effective 1-1-65

All distances must be from the outer boundaries of the Section.

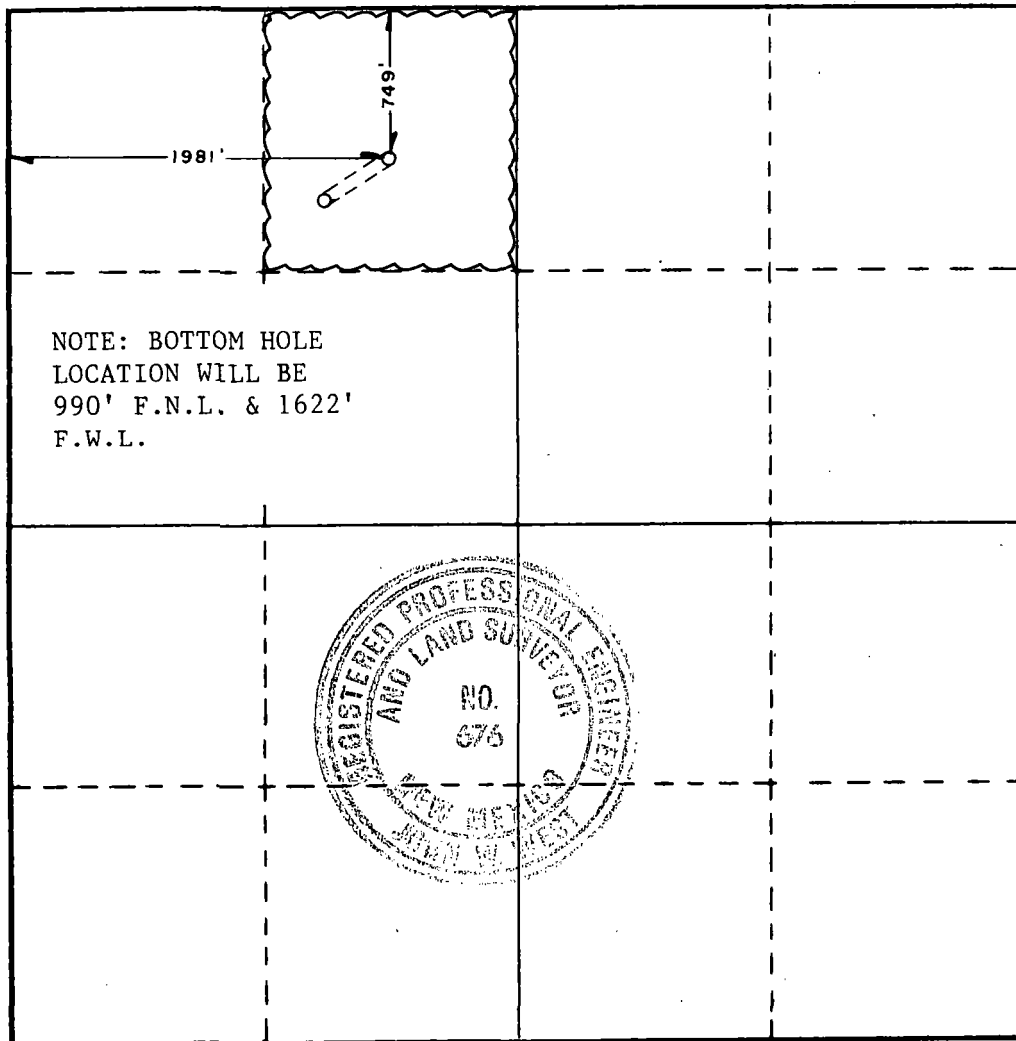
Operator <b>AMOCO PRODUCTION COMPANY</b>		Lease <b>SOUTH HOBBS GRAYBURG SAN ANDRES UNIT</b>		Well No. <b>198</b>
Unit Letter <b>C</b>	Section <b>6</b>	Township <b>19 SOUTH</b>	Range <b>38 EAST</b>	County <b>LEA</b>
Actual Footage Location of Well: <b>749</b> feet from the <b>NORTH</b> line and <b>1981</b> feet from the <b>WEST</b> line				
Ground Level Elev. <b>3637.1'</b>	Producing Formation <b>Grayburg-San Andres</b>		Pool <b>Hobbs GSA</b>	Dedicated Acreage; <b>40</b> Acres

1. Outline the acreage dedicated to the subject well by colored pencil or hachure marks on the plat below.
2. If more than one lease is dedicated to the well, outline each and identify the ownership thereof (both as to working interest and royalty).
3. If more than one lease of different ownership is dedicated to the well, have the interests of all owners been consolidated by communitization, unitization, force-pooling, etc?

☐ Yes ☐ No If answer is "yes," type of consolidation \_\_\_\_\_

If answer is "no," list the owners and tract descriptions which have actually been consolidated. (Use reverse side of this form if necessary.) \_\_\_\_\_

No allowable will be assigned to the well until all interests have been consolidated (by communitization, unitization, forced-pooling, or otherwise) or until a non-standard unit, eliminating such interests, has been approved by the Commission.



**CERTIFICATION**

I hereby certify that the information contained herein is true and complete to the best of my knowledge and belief.

Name Charles M. Herrington  
Position Administrative Analyst (SG)  
Company Amoco Production Company  
Date September 11, 1985

I hereby certify that the well location shown on this plat was plotted from field notes of actual surveys made by me or under my supervision, and that the same is true and correct to the best of my knowledge and belief.

Date Surveyed  
AUGUST 28, 1985

Registered Professional Engineer  
and/or Land Surveyor

Certificate No. JOHN W. WEST, 676  
RONALD J. EIDSON, 3239

**NEW MEXICO OIL CONSERVATION COMMISSION  
WELL LOCATION AND ACREAGE DEDICATION PLAT**

Form C-102  
Supersedes C-128  
Effective 1-1-65

All distances must be from the outer boundaries of the Section.

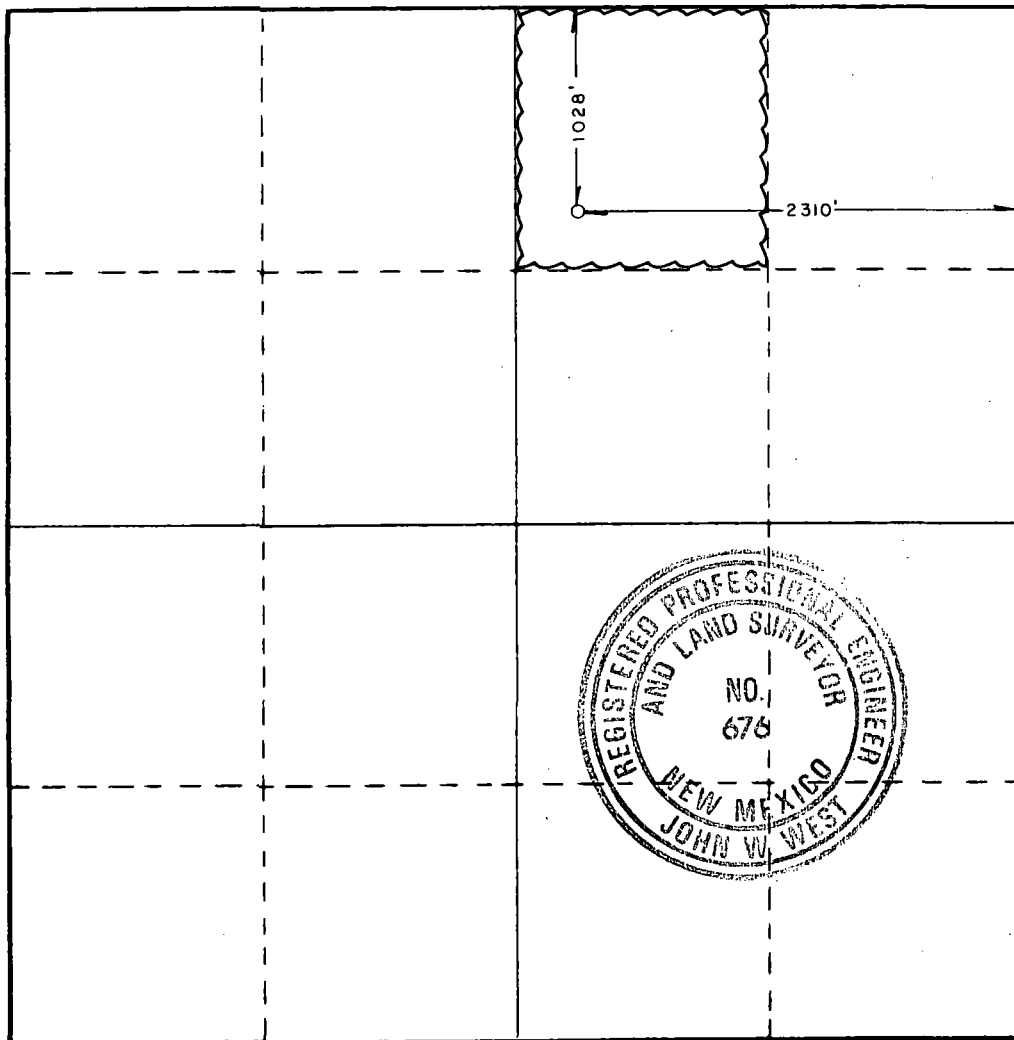
Operator <b>AMOCO PRODUCTION COMPANY</b>			Lease <b>SOUTH HOBBS GRAYBURG SAN ANDRES UNIT</b>		Well No. <b>199</b>
Unit Letter <b>B</b>	Section <b>6</b>	Township <b>19 SOUTH</b>	Range <b>38 EAST</b>	County <b>LEA</b>	
Actual Footage Location of Well: <b>1028</b> feet from the <b>NORTH</b> line and <b>2310</b> feet from the <b>EAST</b> line					
Ground Level Elev. <b>3630.2'</b>	Producing Formation <b>Grayburg-San Andres</b>		Pool <b>Hobbs GSA</b>	Dedicated Acreage: <b>40</b> Acres	

1. Outline the acreage dedicated to the subject well by colored pencil or hachure marks on the plat below.
2. If more than one lease is dedicated to the well, outline each and identify the ownership thereof (both as to working interest and royalty).
3. If more than one lease of different ownership is dedicated to the well, have the interests of all owners been consolidated by communitization, unitization, force-pooling, etc?

☐ Yes    ☐ No    If answer is "yes," type of consolidation \_\_\_\_\_

If answer is "no," list the owners and tract descriptions which have actually been consolidated. (Use reverse side of this form if necessary.) \_\_\_\_\_

No allowable will be assigned to the well until all interests have been consolidated (by communitization, unitization, forced-pooling, or otherwise) or until a non-standard unit, eliminating such interests, has been approved by the Commission.



**CERTIFICATION**

I hereby certify that the information contained herein is true and complete to the best of my knowledge and belief.

*Charles M. Herring*  
Name  
Position

**Administrative Analyst (SG)**

Company

**Amoco Production Company**

Date

**September 11, 1985**

I hereby certify that the well location shown on this plat was plotted from field notes of actual surveys made by me or under my supervision, and that the same is true and correct to the best of my knowledge and belief.

Date Surveyed

**AUGUST 16, 1985**

Registered Professional Engineer  
and/or Land Surveyor

*John W. West*

Certificate No. **JOHN W. WEST, 676**  
**RONALD J. EIDSON, 3239**



**NEW MEXICO OIL CONSERVATION COMMISSION  
WELL LOCATION AND ACREAGE DEDICATION PLAT**

Form C-102  
Supersedes C-128  
Effective 1-1-65

All distances must be from the outer boundaries of the Section.

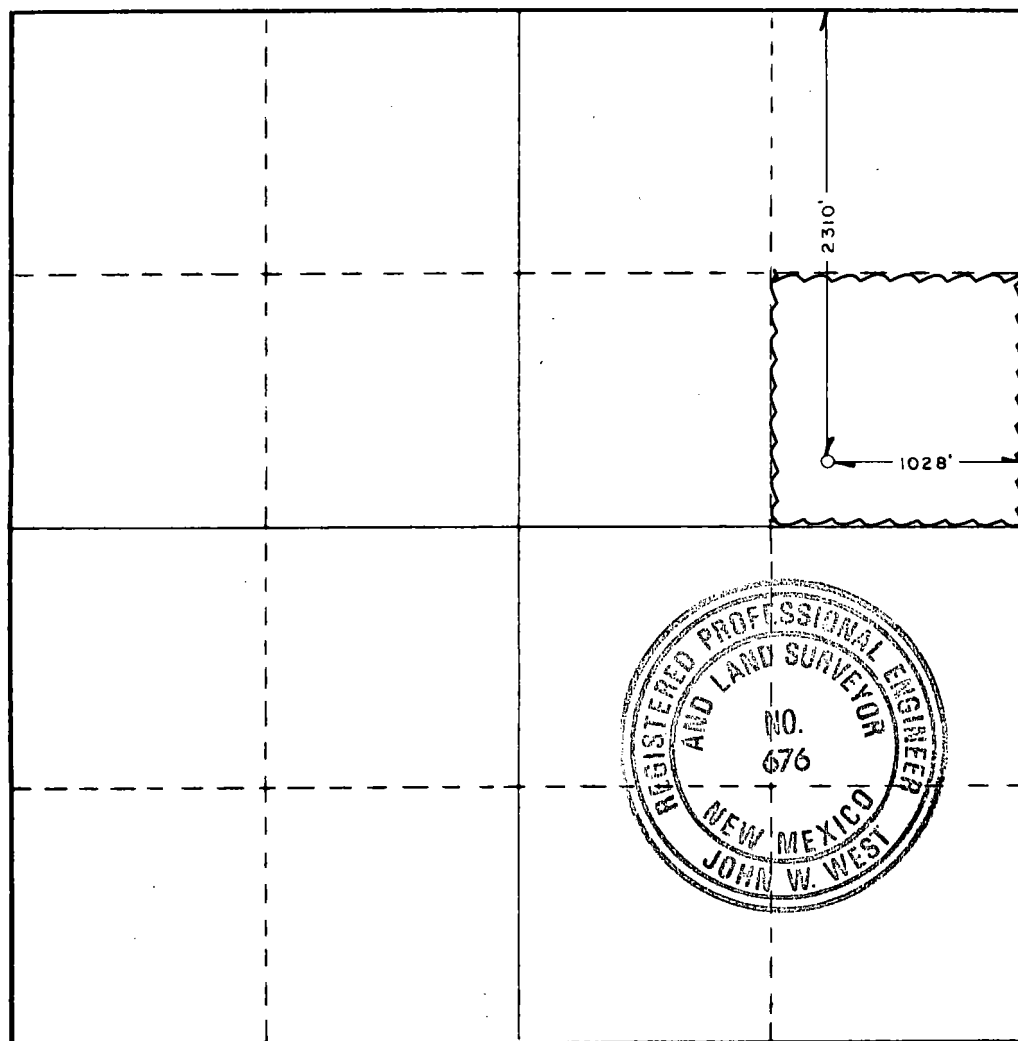
Operator <b>AMOCO PRODUCTION COMPANY</b>			Lease <b>SOUTH HOBBS GRAYBURG SAN ANDRES UNIT</b>		Well No. <b>201</b>
Unit Letter <b>H</b>	Section <b>6</b>	Township <b>19 SOUTH</b>	Range <b>38 EAST</b>	County <b>LEA</b>	
Actual Footage Location of Well: <b>2310</b> feet from the <b>NORTH</b> line and <b>1028</b> feet from the <b>EAST</b> line					
Ground Level Elev. <b>3628.5'</b>	Producing Formation <b>Grayburg-San Andres</b>		Pool <b>Hobbs GSA</b>	Dedicated Acreage: <b>40</b> Acres	

1. Outline the acreage dedicated to the subject well by colored pencil or hachure marks on the plat below.
2. If more than one lease is dedicated to the well, outline each and identify the ownership thereof (both as to working interest and royalty).
3. If more than one lease of different ownership is dedicated to the well, have the interests of all owners been consolidated by communitization, unitization, force-pooling, etc?

☐ Yes ☐ No If answer is "yes," type of consolidation \_\_\_\_\_

If answer is "no," list the owners and tract descriptions which have actually been consolidated. (Use reverse side of this form if necessary.) \_\_\_\_\_

No allowable will be assigned to the well until all interests have been consolidated (by communitization, unitization, forced-pooling, or otherwise) or until a non-standard unit, eliminating such interests, has been approved by the Commission.



**CERTIFICATION**

I hereby certify that the information contained herein is true and complete to the best of my knowledge and belief.

Name *Charles M. Loring*  
Position  
**Administrative Analyst (SG)**

Company  
**Amoco Production Company**

Date  
**September 11, 1985**

I hereby certify that the well location shown on this plat was plotted from field notes of actual surveys made by me or under my supervision, and that the same is true and correct to the best of my knowledge and belief.

Date Surveyed  
**AUGUST 16, 1985**

Registered Professional Engineer and/or Land Surveyor

*John W. West*  
Certificate No. **JOHN W. WEST, 676**  
**RONALD J. EIDSON, 3239**

**NEW MEXICO OIL CONSERVATION COMMISSION  
WELL LOCATION AND ACREAGE DEDICATION PLAT**

Form C-102  
Supersedes C-128  
Effective 1-1-65

All distances must be from the outer boundaries of the Section.


Operator <b>AMOCO PRODUCTION COMPANY</b>			Lease <b>SOUTH HOBBS GRAYBURG SAN ANDRES UNIT</b>		Well No. <b>202</b>
Unit Letter <b>I</b>	Section <b>6</b>	Township <b>19 SOUTH</b>	Range <b>38 EAST</b>	County <b>LEA</b>	
Actual Footage Location of Well: <b>1650</b> feet from the <b>SOUTH</b> line and <b>1100</b> feet from the <b>EAST</b> line					
Ground Level Elev. <b>3617.3'</b>	Producing Formation <b>Grayburg-San Andres</b>		Pool <b>Hobbs GSA</b>	Dedicated Acreage: <b>40</b> Acres	

1. Outline the acreage dedicated to the subject well by colored pencil or hachure marks on the plat below.
2. If more than one lease is dedicated to the well, outline each and identify the ownership thereof (both as to working interest and royalty).
3. If more than one lease of different ownership is dedicated to the well, have the interests of all owners been consolidated by communitization, unitization, force-pooling, etc?

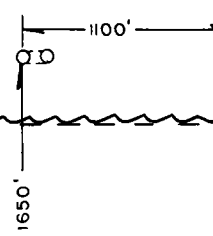
☐ Yes    ☐ No    If answer is "yes," type of consolidation \_\_\_\_\_

If answer is "no," list the owners and tract descriptions which have actually been consolidated. (Use reverse side of this form if necessary.) \_\_\_\_\_

No allowable will be assigned to the well until all interests have been consolidated (by communitization, unitization, forced-pooling, or otherwise) or until a non-standard unit, eliminating such interests, has been approved by the Commission.



NOTE: BOTTOM HOLE LOCATION WILL BE 1650' F.S.L. & 990' F.E.L.



**CERTIFICATION**

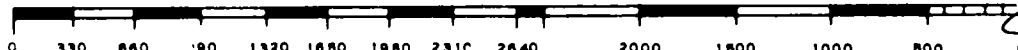
*I hereby certify that the information contained herein is true and complete to the best of my knowledge and belief.*

*Charles M. Sebring*  
Name  
**Administrative Analyst (SG)**  
Position  
**Amoco Production Company**  
Company  
**September 11, 1985**  
Date

*I hereby certify that the well location shown on this plat was plotted from field notes of actual surveys made by me or under my supervision, and that the same is true and correct to the best of my knowledge and belief.*

Date Surveyed  
**AUGUST 16, 1985**  
Registered Professional Engineer and/or Land Surveyor

*John W. West*  
Certificate No. **JOHN W. WEST, 676**  
**RONALD J. EIDSON, 3239**



**NEW MEXICO OIL CONSERVATION COMMISSION  
WELL LOCATION AND ACREAGE DEDICATION PLAT**

Form C-102  
Supersedes C-128  
Effective 1-1-65

All distances must be from the outer boundaries of the Section.

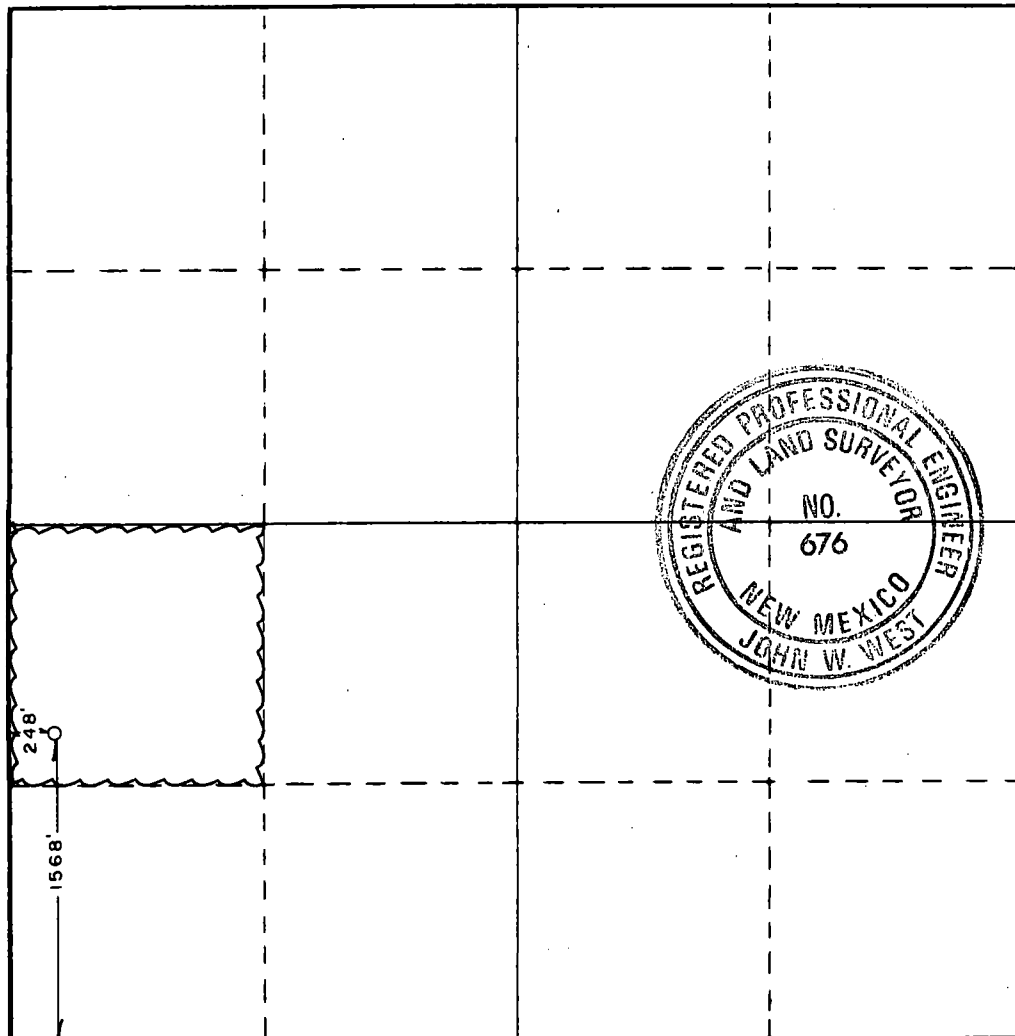
Operator <b>AMOCO PRODUCTION COMPANY</b>			Lease <b>SOUTH HOBBS GRAYBURG SAN ANDRES UNIT</b>		Well No. <b>203</b>
Unit Letter <b>L</b>	Section <b>5</b>	Township <b>19 SOUTH</b>	Range <b>38 EAST</b>	County <b>LEA</b>	
Actual Footage Location of Well: <b>1568</b> feet from the <b>SOUTH</b> line and <b>248</b> feet from the <b>WEST</b> line					
Ground Level Elev. <b>3615.5'</b>	Producing Formation <b>Grayburg-San Andres</b>		Pool <b>Hobbs GSA</b>		Dedicated Acreage: <b>40</b> Acres

1. Outline the acreage dedicated to the subject well by colored pencil or hachure marks on the plat below.
2. If more than one lease is dedicated to the well, outline each and identify the ownership thereof (both as to working interest and royalty).
3. If more than one lease of different ownership is dedicated to the well, have the interests of all owners been consolidated by communitization, unitization, force-pooling, etc?

☐ Yes   ☐ No   If answer is "yes," type of consolidation \_\_\_\_\_

If answer is "no," list the owners and tract descriptions which have actually been consolidated. (Use reverse side of this form if necessary.) \_\_\_\_\_

No allowable will be assigned to the well until all interests have been consolidated (by communitization, unitization, forced-pooling, or otherwise) or until a non-standard unit, eliminating such interests, has been approved by the Commission.



**CERTIFICATION**

I hereby certify that the information contained herein is true and complete to the best of my knowledge and belief.

Name *Charles M. Larrin*  
Position  
**Administrative Analyst (SG)**  
Company  
**Amoco Production Company**  
Date  
**September 11, 1985**

I hereby certify that the well location shown on this plat was plotted from field notes of actual surveys made by me or under my supervision, and that the same is true and correct to the best of my knowledge and belief.

Date Surveyed  
**AUGUST 19, 1985**

Registered Professional Engineer  
and/or Land Surveyor

*John W. West*  
Certificate No. **JOHN W. WEST, 676**  
**RONALD J. EIDSON, 3239**

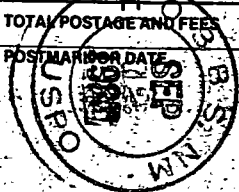
P 267 162 750

## RECEIPT FOR CERTIFIED MAIL

NO INSURANCE COVERAGE PROVIDED—  
NOT FOR INTERNATIONAL MAIL  
(See Reverse)

SENT TO		Shell Western Esp., Inc.	
STREET AND NO.		P.O. Box 991	
P.O., STATE AND ZIP CODE		Houston, TX 77001	
POSTAGE		.73	
CONSULT POSTMASTER FOR FEES	CERTIFIED FEE	.75	
	SPECIAL DELIVERY	.	
	RESTRICTED DELIVERY	.	
	OPTIONAL SERVICES		
	RETURN RECEIPT SERVICE		
	SHOW TO WHOM AND DATE DELIVERED	.70	
SHOW TO WHOM, DATE, AND ADDRESS OF DELIVERY		.	
SHOW TO WHOM AND DATE DELIVERED WITH RESTRICTED DELIVERY		.	
SHOW TO WHOM, DATE AND ADDRESS OF DELIVERY WITH RESTRICTED DELIVERY		.	
TOTAL POSTAGE AND FEES		2.18	
POSTMARK OR DATE			

PS Form 3800, Apr. 1976



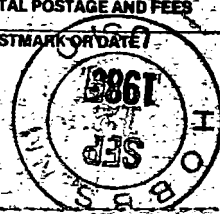
P 267 162 749

## RECEIPT FOR CERTIFIED MAIL

NO INSURANCE COVERAGE PROVIDED—  
NOT FOR INTERNATIONAL MAIL  
(See Reverse)

SENT TO		Gulf Oil Exploration & Prod. Co.	
STREET AND NO.		P.O. Box 1150	
P.O., STATE AND ZIP CODE		Midland, TX 79702	
POSTAGE		.73	
CONSULT POSTMASTER FOR FEES	CERTIFIED FEE	.75	
	SPECIAL DELIVERY	.	
	RESTRICTED DELIVERY	.	
	OPTIONAL SERVICES		
	RETURN RECEIPT SERVICE		
	SHOW TO WHOM AND DATE DELIVERED	.70	
SHOW TO WHOM, DATE, AND ADDRESS OF DELIVERY		.	
SHOW TO WHOM AND DATE DELIVERED WITH RESTRICTED DELIVERY		.	
SHOW TO WHOM, DATE AND ADDRESS OF DELIVERY WITH RESTRICTED DELIVERY		.	
TOTAL POSTAGE AND FEES		2.18	
POSTMARK OR DATE			

PS Form 3800, Apr. 1976



## **INTENTIONAL OMISSIONS**

The following document(s) have been intentionally omitted from this file due to the indicated reasons.

FILE #

DD-9

### **DESCRIPTION OF OMITTED DOCUMENTS**

OMITTED DOCUMENT

REASON OMITTED

Proposed BHL/SL MAP

Too Large