



STATE OF NEW MEXICO
ENERGY, MINERALS AND NATURAL RESOURCES DEPARTMENT
OIL CONSERVATION DIVISION



BRUCE KING
GOVERNOR

ANITA LOCKWOOD
CABINET SECRETARY

July 15, 1993

POST OFFICE BOX 2088
STATE LAND OFFICE BUILDING
SANTA FE, NEW MEXICO 87504
(505) 827-5800

Energy Development Corporation
1000 Louisiana, Suite 2900
Houston, Texas 77002

Attention: Mark Blumenshine

Administrative Order DD-85

Dear Mr Blumenshine:

Reference is made to your application dated July 9, 1993 for a non-standard oil well location, for approval to intentionally deviate a well (drill a horizontal well) and to form a 480-acre proration unit consisting of contiguous quarter sections from more than one government section. The subject well being your San Isidro 5 Well No. 2, is to be located 475 feet from the North line and 1750 feet from the East line (Unit B) of Section 5, Township 20 North, Range 2 West, NMPM, Rio Puerco-Mancos Pool, Sandoval County, New Mexico. The NE/4 of said Section 5 and the E/2 of Section 32, Township 21 North, Range 2 West, NMPM, shall be dedicated to the well forming a non-standard 458.75-acre spacing and proration unit.

THE DIVISION DIRECTOR FINDS THAT:

- (1) The well is located in the San Isidro (Shallow) Unit which is governed by special rules and regulations as stated in Orders No. R-9330 and R-9330-A.
- (2) The well is located on the edge of the subject unit and requires that the offset operators be notified of requests for administrative approvals. Energy Development Corporation submitted a waiver from Gary-Williams Company, the operator of the offsetting acreage.
- (3) The geologic reason for the non-standard proration unit, contiguous quarter sections from more than one governmental section, is requested so that the proposed wellbore will follow the seismic line, which is the control for defining the area of maximum concentration of fractures.

(4) The surface location of the well is non-standard and the horizontal portion of the well will be nearer than 660 feet from the outer boundary at one point.

IT IS THEREFORE ORDERED THAT:

(1) The non-standard surface location for Energy Development Corporation's San Isidro 5 Well No. 5 will be located 475 feet from the North line and 1750 feet from the East line (Unit B) of Section 5, Township 20 North, Range 2 West, NMPM, Rio Puerco-Mancos Pool, Sandoval County, is approved.

(2) The drilling of the subject well horizontally into the E/2 of Section 32, Township 21 North, Range 2 West, NMPM, is approved.

(3) The non-standard proration unit consisting of 458.75 acres and crossing from Section 5 into Section 32 is approved. Due to the survey adjustment between Township 20 North and Township 21 North, the wellbore will come closer to the proration unit boundary than the allowed 660 feet. Because this is a unitized area, this should not affect correlative rights and is approved.

PROVIDED HOWEVER THAT prior to commencing directional drilling operations into said wellbore, the applicant shall establish the location of the kick-off point by means of a directional survey acceptable to the Division.

PROVIDED HOWEVER THAT during or upon completion of directional drilling operations, the applicant shall conduct an accurate wellbore survey from the kick-off point to total depth in order that the subsurface bottomhole location, as well as the wellbore's true depth and course, may be determined.

(4) The applicant shall notify the supervisor of the Aztec district office of the Division of the date and time said wellbore surveys are to be conducted so that they may be witnessed. The applicant shall further provide a copy of said wellbore surveys to the Santa Fe and Aztec offices of the Division upon completion.

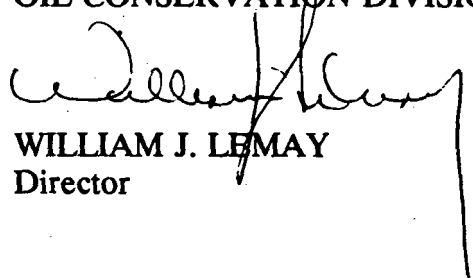
(5) Form C-105 shall be filed in accordance with Division Rule 1105 and the operator shall indicate thereon true vertical depth in addition to measured depths.

(6) A corrected copy of Form C-102 showing the actual surface and bottomhole locations shall be filed with the Santa Fe and Aztec offices at the time the C-104 is submitted.

(7) Jurisdiction of this cause is retained for the entry of such further orders as the Division may deem necessary.

DONE at Santa Fe, New Mexico, on the day and year hereinabove designated.

STATE OF NEW MEXICO
OIL CONSERVATION DIVISION


WILLIAM J. LEMAY
Director

S E A L

WJL/MES/amg

cc: Oil Conservation Division - Aztec
Bureau of Land Management - Albuquerque



STATE OF NEW MEXICO

ENERGY, MINERALS AND NATURAL RESOURCES DEPARTMENT

OIL CONSERVATION DIVISION



BRUCE KING
GOVERNOR

ANITA LOCKWOOD
CABINET SECRETARY

July 15, 1993

POST OFFICE BOX 2088
STATE LAND OFFICE BUILDING
SANTA FE, NEW MEXICO 87504
(505) 827-5800

Energy Development Corporation
1000 Louisiana, Suite 2900
Houston, Texas 77002

Attention: Mark Blumenshine

Administrative Order DD-85

Dear Mr Blumenshine:

Reference is made to your application dated July 9, 1993 for a non-standard oil well location, for approval to intentionally deviate a well (drill a horizontal well) and to form a 480-acre proration unit consisting of contiguous quarter sections from more than one government section. The subject well being your San Isidro 5 Well No. 2⁴⁵ to be located 475 feet from the North line and 1750 feet from the East line (Unit B) of Section 5, Township 20 North, Range 2 West, NMPM, Rio Puerco-Mancos Pool, Sandoval County, New Mexico. The NE/4 of said Section 5 and the E/2 of Section 32, Township 21 North, Range 2 West, NMPM, shall be dedicated to the well forming a non-standard 458.75-acre spacing and proration unit.

THE DIVISION DIRECTOR FINDS THAT:

(1) The well is located in the San Isidro (Shallow) Unit which is governed by special rules and regulations as stated in Orders No. R-9330 and R-9330-A.

(2) The well is located on the edge of the subject unit and requires that the offset operators be notified of requests for administrative approvals. *Energy Development Corp.*
submitted

~~(3)~~ A waiver from Gary-Williams Company, the operator of the offsetting acreage, *AS ONLY*
~~was submitted.~~

~~3 (4)~~ The geologic reason for the non-standard proration unit, contiguous quarter sections from more than one governmental section, is requested so that the proposed wellbore will follow the seismic line, which is the control for defining the area of maximum concentration of fractures.

4
(8) The surface location of the well is non-standard and the horizontal portion of the well will be nearer than 660 feet from the outer boundary at one point.

IT IS THEREFORE ORDERED THAT:

(1) The non-standard surface location and wellbore location are approved.

(2) ~~The drilling of a horizontal well is approved.~~

(3) The non-standard proration unit is approved.

committing of 458.75 acre and crossing from section 5 into section 32.

PROVIDED HOWEVER THAT prior to commencing directional drilling operations into said wellbore, the applicant shall establish the location of the kick-off point by means of a directional survey acceptable to the Division.

PROVIDED HOWEVER THAT during or upon completion of directional drilling operations, the applicant shall conduct an accurate wellbore survey from the kick-off point to total depth in order that the subsurface bottomhole location, as well as the wellbore's true depth and course, may be determined.

(4) The applicant shall notify the supervisor of the Aztec district office of the Division of the date and time said wellbore surveys are to be conducted so that they may be witnessed. The applicant shall further provide a copy of said wellbore surveys to the Santa Fe and Aztec offices of the Division upon completion.

(5) Form C-105 shall be filed in accordance with Division Rule 1105 and the operator shall indicate thereon true vertical depth in addition to measured depths.

(6) A corrected copy of Form C-102 showing the actual surface and bottomhole locations shall be filed with the Santa Fe and Aztec offices at the time the C-104 is submitted.

(7) Jurisdiction of this cause is retained for the entry of such further orders as the Division may deem necessary.



OIL CONSERVATION DIVISION
RECEIVED
'93 JUL 22 AM 9 21

July 14, 1993

New Mexico Oil Conservation
Division
P. O. Box 2088
Santa Fe, NM 87504-2088
Attn: Larry Van Ryan

Re: San Isidro Well #5-2
Rio Puerco (Mancos) Pool
Sandoval County, NM

Gentlemen:

As per special operating rule 2(d) for the San Isidro (shallow) unit, Energy Development Corporation requests administrative approval to cross governmental section lines, drill a horizontal well, and drill from an irregular location. The reasons for this request are as follows:

1. The horizontal portion of the well is to follow a seismic line to maintain geologic control. Both the surface and bottom hole locations are located on the seismic line.
2. The horizontal portion of the well will penetrate the Mancos formation at a flexure point where it is calculated to have a maximum concentration of natural fractures.

Please advise if additional information is required.

Sincerely,

Mark S. Gerding
Supervisor, Reg. and Environ. Affairs

Energy Development Corporation
A subsidiary of Public Service Enterprise Group Incorporated

1000 Louisiana, Suite 2900, Houston, Texas 77002 (713) 750-7300



OIL CONSERVATION DIVISION
RECEIVED

MP95
"A"

'93 JUL 30 AM 8 41

July 14, 1993

New Mexico Oil Conservation
Division
P. O. Box 2088
Santa Fe, NM 87504-2088
Attn: Larry Van Ryan

Re: San Isidro Well #5-2
Rio Puerco (Mancos) Pool
Sandoval County, NM

Gentlemen:

As per special operating rule 2(d) for the San Isidro (shallow) unit, Energy Development Corporation requests administrative approval to cross governmental section lines, drill a horizontal well, and drill from an irregular location. The reasons for this request are as follows:

1. The horizontal portion of the well is to follow a seismic line to maintain geologic control. Both the surface and bottom hole locations are located on the seismic line.
2. The horizontal portion of the well will penetrate the Mancos formation at a flexure point where it is calculated to have a maximum concentration of natural fractures.

Please advise if additional information is required.

Sincerely,

Mark S. Gerding
Supervisor, Reg. and Environ. Affairs

Energy Development Corporation
A subsidiary of Public Service Enterprise Group Incorporated

1000 Louisiana, Suite 2900, Houston, Texas 77002 (713) 750-7300

TELECOPY TRANSMITTAL FORM
ENERGY DEVELOPMENT CORPORATION

1000 Louisiana Street, Suite 2900
Houston, Texas 77002

TO: MR. LARRY JAY RYAN Time: _____
COMPANY: NMOCO
TELECOPY NUMBER: 505-827-5141

FROM: M. Blumenthal PHONE NO.: 713-750-7535

NUMBER OF PAGES (INCLUDING THIS FORM): 19

MESSAGE: ATTACHED IS LETTER REQUESTING ADMINISTRATIVE
APPROVAL. YOU SHOULD SHORTLY RECEIVE A COPY
OF WAIVER OBJECTION FROM GARY WILLIAMS
(COPY ATTACHED). MARK B.

TELECOPY NUMBER SENT FROM: (713) 750-7580

PLEASE CALL (713) 750-7300 OR THE NUMBER SHOWN ABOVE IF YOU HAVE ANY QUESTIONS.

The information contained in this FAX is confidential and/or privileged. This FAX is intended to be reviewed initially by only the individual named above. If the reader of this TRANSMITTAL PAGE is not the intended recipient or a representative of the intended recipient, you are hereby notified that any review, dissemination or copying of this FAX or the information contained herein is prohibited. If you have received this FAX in error, please immediately notify the sender by telephone and return this FAX to the sender at the above address. Thank you.

(1) For Energy Development Corporation's San Diego 5 No. 2 well located 475 feet from the North line and 1750 feet from the East line (Unit B) of section 5, Township 20 North, Range 2 West, NMPM, Rio Pinos - Manure Pool Sandoval County is approved.

(2) The drilling of the subject well horizontally into the E/2 of section 32, Township 21 North, Range 2 West NMPM is approved.

(3) Due to the ^{survey} adjustment between Township 20 North and Township 21 North, the well bore will come closer to the production unit boundary than the allowed 660 feet. Because this is a unitized area, this should not affect correlative rights and is approved.



July 9, 1993

Mr. William J. LeMay
New Mexico Oil Conservation
Division
310 Old Santa Fe Trail
Santa Fe, New Mexico 87503

Re: Application of Energy Development Corporation for
Administrative Approval of a Horizontal Well in
the San Isidro (Shallow) Unit

Dear Mr. LeMay:

Pursuant to Order No. R-9330, as amended, Energy Development Corporation (EDC) hereby applies for administrative approval of the following well: the San Isidro No. 5-2 Well, with a surface location 475 feet from the North line and 1,750 feet from the East line of Section 5, Township 20 North, Range 2 West, N.M.P.M., and a proposed bottomhole location 1,975' FEL x 1,200' FSL of Section 32, T21N-R2W, N.M.P.M., Sandoval County, New Mexico. A drilling proposal for the well is attached hereto. EDC proposes to dedicate lots 1 and 2 and the S/2 NE/4 of Section 5, T20N-R2W, N.M.P.M. and the E/2 of Section 32, T21N-R2W, N.M.P.M. (458.75 acres) to the well.

The well's surface location is unorthodox, for which EDC also requests administrative approval. The bottomhole location will be standard under the special operating rules for the Unit.

Energy Development Corporation requests a non-standard spacing and proration unit under Rule 6 of Order No. R-9330.

A Waiver of Objection to this location has been verbally approved by The Gary-Williams Company, as Operator of Section 4, T20N-R2W, N.M.P.M., Sandoval County, New Mexico. Mr. Craig Ambler of The Gary-Williams Company will telecopy the NMOCD a copy of the signed waiver shortly.

Energy Development Corporation
A subsidiary of Public Service Enterprise Group Incorporated

1000 Louisiana, Suite 2900, Houston, Texas 77002 (713) 750-7300

Mr. William J. LeMay
July 9, 1993
Page Two

Please contact me at (713) 750-7535 if you need any additional information. Your prompt attention to this application is appreciated.

Yours very truly,

ENERGY DEVELOPMENT CORPORATION

Mark Blumenshine

Mark Blumenshine
Landman

:lt

Need to approve:

1. NSL (surface & too close to PO boundary)
2. Directional Well
3. Crossing section line - need BLM approval

Require (1) Waiver from operator in sec 4
(2) Proof of BLM approval of production unit
(3) Reason for 400 ac PO crossing sec. line

Submit to Appropriate
District Office
State Lease - 4 copies
Fee Lease - 3 copies

State of New Mexico
Energy, Minerals and Natural Resources Department

Form C-102
Revised 1-1-89

DISTRICT I
P.O. Box 1980, Hobbs, NM 88240

DISTRICT II
P.O. Drawer DD, Artesia, NM 88210

DISTRICT III
1000 Rio Bravos Rd., Artec, NM 87410

OIL CONSERVATION DIVISION

P.O. Box 2088
Santa Fe, New Mexico 87504

WELL FILE

WELL LOCATION AND ACREAGE DEDICATION PLAT

All Distances must be from the outer boundaries of the section

Operator ENERGY DEVELOPMENT CORPORATION			Lease SAN ISIDRO 5		Well No. 2
Unit Letter B	Section 5	Township 20 NORTH	Range 2 WEST	NMPM	County SANDOVAL
Actual Footage Location of Well: 475 feet from the NORTH line and 1750 feet from the EAST line					
Ground Level Elev. 6923.1'		Producing Formation		Pool Acres	

- Outline the acreage dedicated to the subject well by colored pencil or hatchure marks on the plat below.
- If more than one lease is dedicated to the well, outline each and identify the ownership thereof (both as to working interest and royalty).
- If more than one lease of different ownership is dedicated to the well, have the interest of all owners been consolidated by communitization, unitization, force-pooling, etc.?
☐ Yes ☐ No If answer is "yes" type of consolidation _____
If answer is "no" list of owners and tract descriptions which have actually been consolidated. (Use reverse side of this form necessary.)
No allowable will be assigned to the well unit all interests have been consolidated (by communitization, unitization, forced-pooling, otherwise) or until a non-standard unit, eliminating such interest, has been approved by the Division.

OPERATOR CERTIFICATION

I hereby certify the information contained herein is true and complete to the best of my knowledge and belief.

Signature

Printed Name

Position

Company

Date

SURVEYOR CERTIFICATION

I hereby certify that the well location shown on this plat was plotted from field notes of actual surveys made by me or under my supervision, and that the same is true and correct to the best of my knowledge and belief.

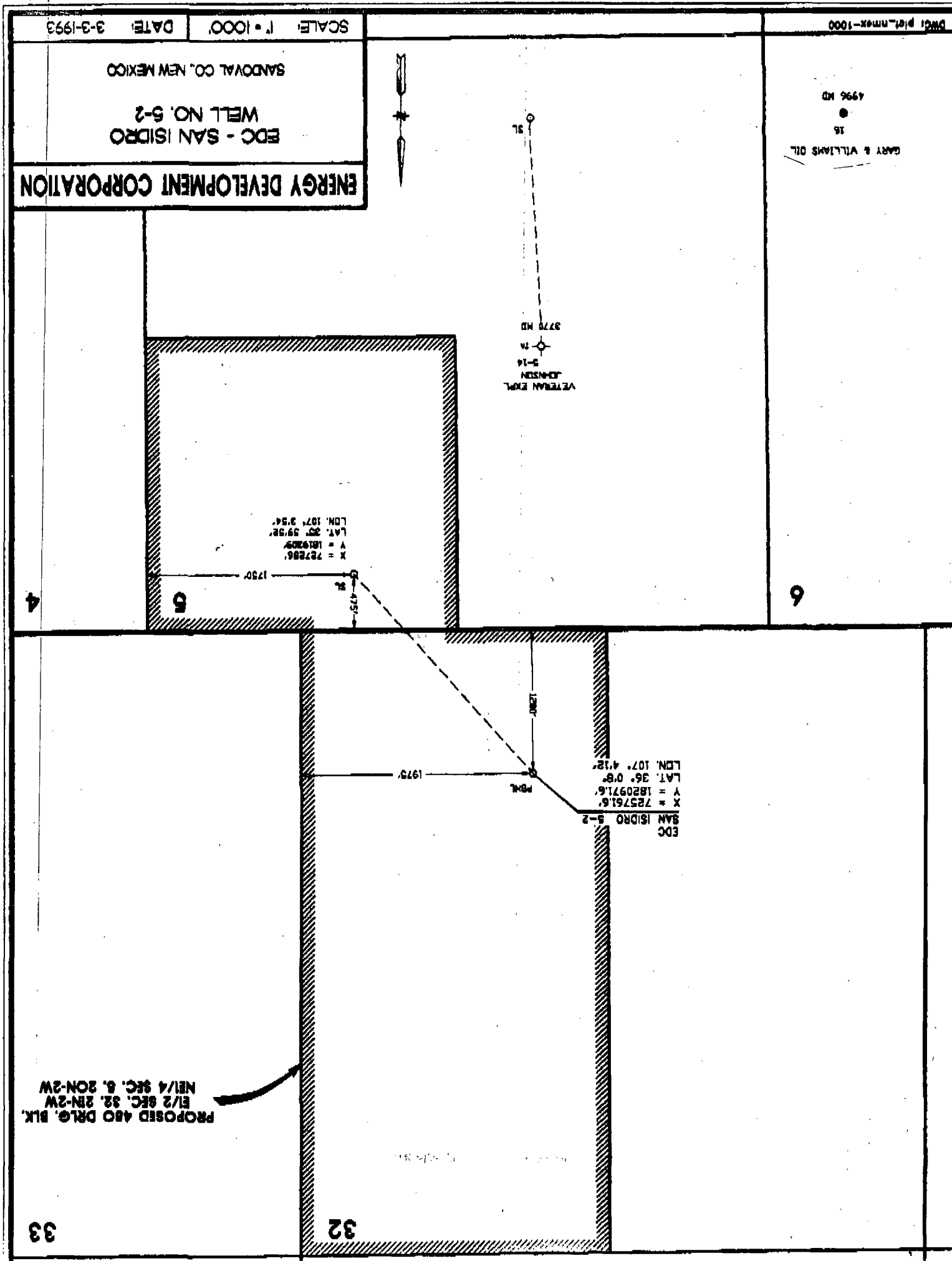
Date Surveyed
APRIL 2, 1993

Signature & Seal of
Professional Surveyor

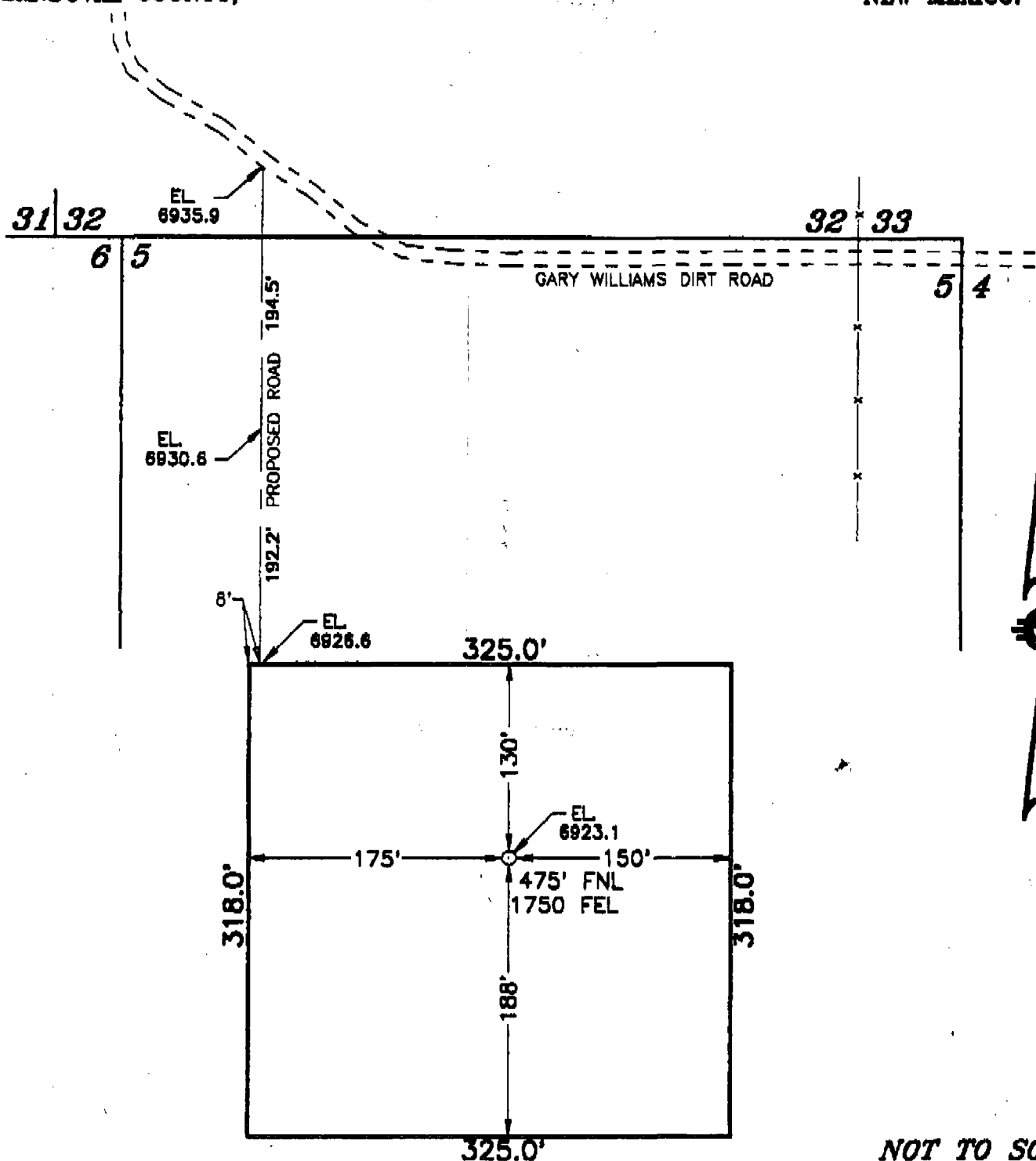
GARY L. JAMES
NEW MEXICO
Professional Surveyor
Certification No. **676**
RONALD W. JAMES
Professional Surveyor
Certification No. **3239**
7977

93-11-0550

0 330 660 990 1320 1650 1980 2310 2640 2000 1500 1000 500 0



SECTION 5, TOWNSHIP 20 NORTH, RANGE 2 WEST, N.M.P.M.,
SANDOVAL COUNTY, NEW MEXICO.



NOT TO SCALE

ENERGY DEVELOPMENT CORPORATION

PROPOSED ROAD AND PAD FOR THE SAN ISIDRO 5 No. 2,
IN SECTION 5, TOWNSHIP 20 NORTH, RANGE 2 WEST,
N.M.P.M., SANDOVAL COUNTY, NEW MEXICO.

JOHN W. WEST ENGINEERING COMPANY
CONSULTING ENGINEERS & SURVEYORS - HOBBS, NEW MEXICO

Survey Date: 04-02-93 Sheet 1 of 1 Sheets

W.O. Number: 93-11-0550 Drawn By: S.C. NICHOLS

Date: 04-06-93 ENG0550 Scale: NOT TO SCALE

ENERGY DEVELOPMENT CORPORATION**DRILLING PLAN****SAN ISIDRO WELL NO. 5-2****SANDOVAL COUNTY, NEW MEXICO**

OBJECTIVE: Drill a vertical well (pilot hole) to the base of the Mancos Formation (+/-5300' TVD) to identify and evaluate prospective horizontal drilling targets. Plug well back and drill a horizontal leg a maximum of 2196' displacement in a direction of N 39° W. Estimated formation tops indicate a measured depth of 6,253' and TVD 4,384' at the end of the horizontal well. Actual vertical placement of the horizontal wellbore will depend on results of full core analyses and evaluation of logs from the vertical pilot hole.

ENERGY DEVELOPMENT CORPORATION

GENERAL DRILLING PROGRAM

SAN ISIDRO WELL NO. 5-2

SANDOVAL COUNTY, NEW MEXICO

1. Energy Development Corporation will build necessary road, approximately 135' x 260' location, appropriate cellar and reserve pits.
2. Move in and rig up Four Corners Drilling Company Rig No. 7.
3. Drill 12-1/4" hole to +/-350' using fresh water-gel.
4. Set 9-5/8" casing as detailed below or equivalent:

<u>SETTING DEPTH</u>	<u>LENGTH</u>	<u>WEIGHT</u>	<u>GRADE</u>	<u>THREAD</u>
350'	350'	36.0#	K-55	ST&C

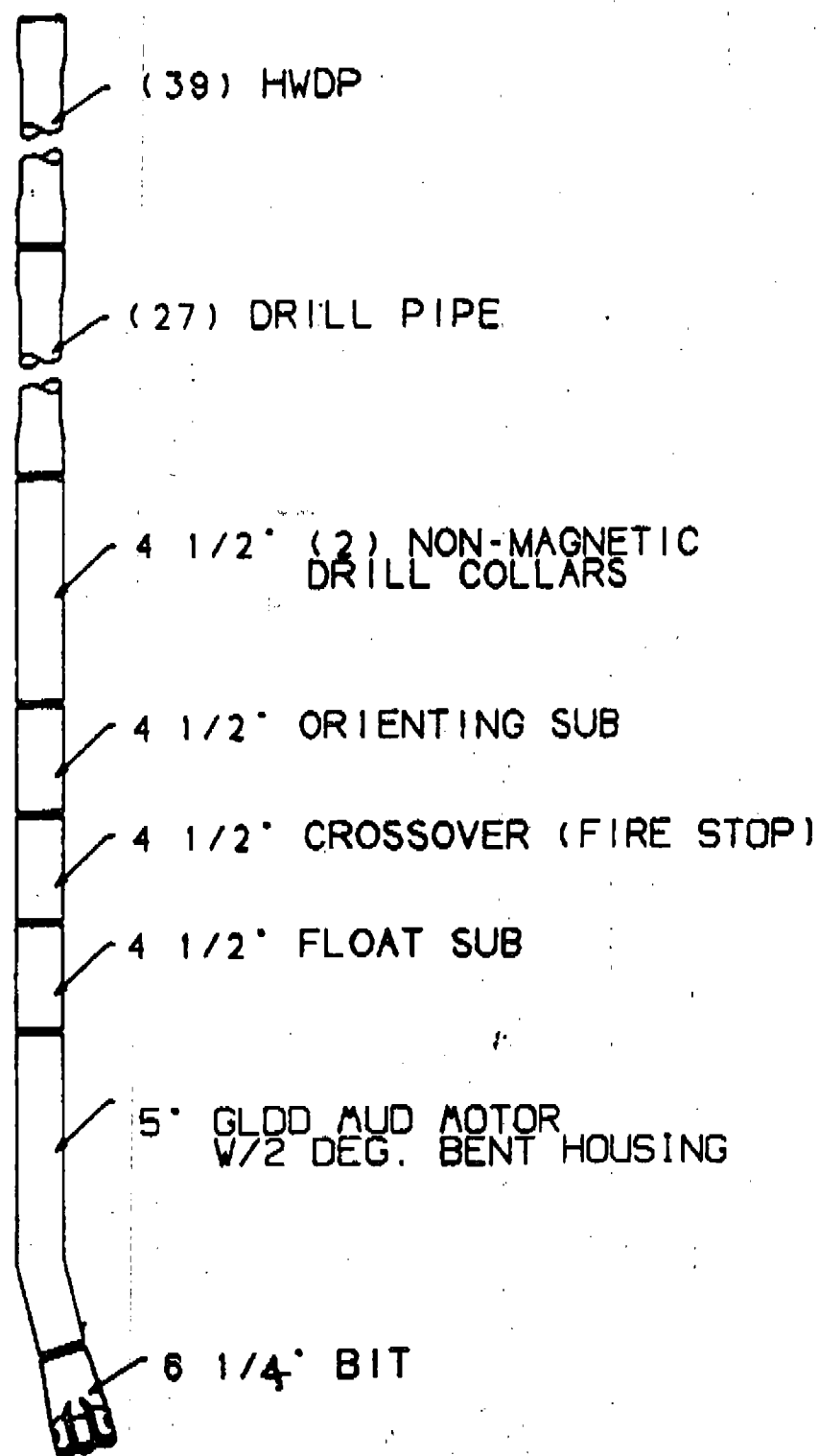
5. Cement to surface as per cementing recommendations.
6. WOC 8 hours minimum. Cut 9-5/8" casing and install 9-5/8" SOW x 10" 3000 psi WP braden head. Test head to 1000 psi.
7. Install 10" BOP - 3000 psi Shaefer LWS double + annular + Grant rotating head. PU test plug and test annular to 2000 psi and rams to 3000 psi.
8. Drill out cement to float collar, test casing to 1500 psi, drill to float shoe and retest to 1500 psi.
9. Drill 8-3/4" hole to +/-3,600' into the top of the Mancos Formation using low solids nondispersed fresh water system. Mud logger to be operational before drillout.
10. Run Schlumberger logs per EDC Logging Program.
11. Run 7" new API inspected casing as detailed below or equivalent:

<u>SETTING DEPTH</u>	<u>LENGTH</u>	<u>WEIGHT</u>	<u>GRADE</u>	<u>THREAD</u>
3600'	3600'	23#	N-80	LT&C

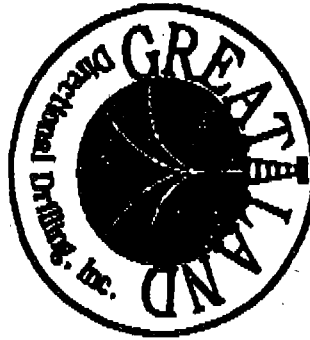
12. RU cementing head and lines. C&CM. Cement 7" casing in two (2) stages per cementing company recommendation. RD cementers.
13. Raise BOP stack and set full weight of 7" casing on slips in braden head. Cut and bevel casing. Install 10" - 3000 WP x 6" - 3000 WP casing head and test to 1000 psi.
14. Install 10", BOP stack w/rotating head. Test annular to 2000 psi and rams to 3000 psi.
15. PU 6-1/4" bit and BHA. Install wear bushing. TIH.

16. Drill out 7" DV tool, float collar and test casing to 1500 psi. Drill to float shoe and retest casing to 1500 psi.
17. Drill shoe and 5' of formation. CBU and test seat to 10.0 ppg EMW.
18. Drill 6-1/4" vertical hole to +/-5,300' with foam using MWD with Gammaray. Three (3) conventional cores will be taken in the Gallup "B", Gallup "C" and Semilla Zones.
19. Run Schlumberger logs per EDC Logging Program.
20. Lay balanced cement plug 3,600-4,000'. WOC per cementers recommendation. PU 6-1/4" bit and dress plug to 3,785'.
21. PU horizontal drilling assembly with MWD and GR. Kick off and drill horizontal hole per Directional Program.
22. Run Schlumberger logs per EDC Logging Program.
23. Lay down drill string and BHA.
24. Run production tubing. ND BOP. NU tree and test. Release rig.

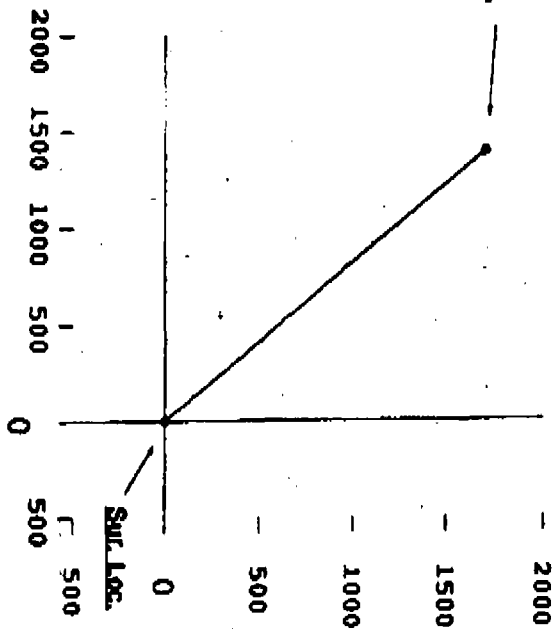
ENERGY DEVELOPMENT
EDC - SAN ISEDRO #5-2



DEVELOPMENT CORPORATION
SAN ISIDRO #5-2
OVAL COURT, NEW MEXICO



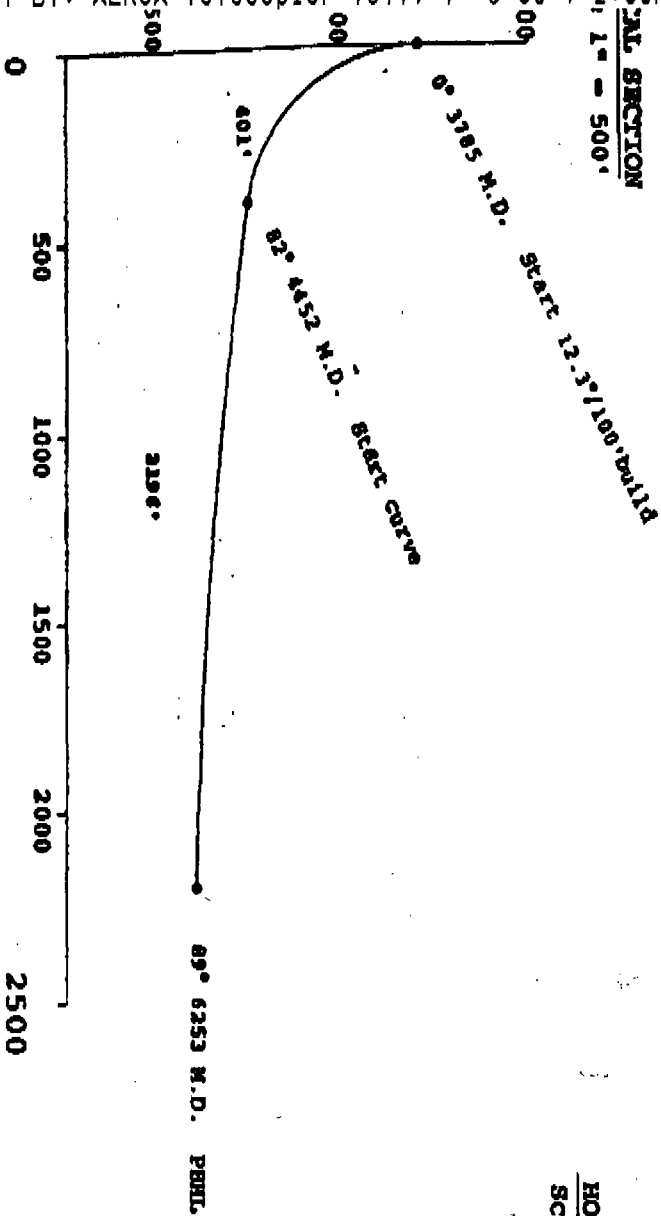
Entered R.H.L.
2186' Displacement
@ 320.8° Azimuth
North-1386' West-1386'
TVD-4384' MD-6253'



HORIZONTAL PLAN
Scale 1" = 1000'



OF PROPOSED
320.8°
NAT. SECTION
1" = 500'



GREAT LAND DIRECTIONAL DRILLING, INC.

FERROV DEVELOPMENT CORPORATION

AN ISERO #5-2

SANDOVAL COUNTY, NEW MEXICO

Lot Elevation: 0.00

Plane of Vertical Section: N 39 12 W

Minimum Curvature Calculations

Measured Depth Feet	B O R E - H O L E Inclination Deg	Direction Deg	TRUE Vertical Depth Feet	R E C T A N G U L A R C O O R D I N A T E S		VERTICAL SECTION Feet	C L O S U R E S		DLS Deg/100'
				North/South	East/West		Distance Feet	Direction Deg	
3785.00	0.00	0.00	3785.00	0.00	0.00	0.00	0.00	0.00	0.00
Rate 12.3°/100' build									
3815.00	3.69	320.80	3814.98	.75N	.61W	.96	.96	320.80	12.30
3845.00	7.38	320.80	3844.83	2.99N	2.44W	3.86	3.86	320.79	12.30
3875.00	11.07	320.80	3874.44	6.72N	5.48W	8.67	8.67	320.80	12.30
3905.00	14.76	320.80	3903.68	11.91N	9.72W	15.37	15.37	320.80	12.30
3935.00	18.45	320.80	3932.42	18.56N	15.13W	23.94	23.94	320.80	12.30
3965.00	22.14	320.80	3960.55	26.62N	21.71W	34.35	34.35	320.80	12.30
3995.00	25.83	320.80	3987.96	36.07N	29.41W	46.54	46.54	320.80	12.30
4025.00	29.52	320.80	4014.52	46.86N	38.22W	60.47	60.47	320.80	12.30
4055.00	33.21	320.80	4040.13	58.96N	48.09W	76.08	76.08	320.80	12.30
4085.00	36.90	320.80	4064.69	72.31N	58.97W	93.31	93.31	320.80	12.30
4115.00	40.59	320.80	4088.08	86.86N	70.84W	112.08	112.08	320.80	12.30
4145.00	44.28	320.80	4110.22	102.54N	83.63W	132.32	132.32	320.80	12.30
4175.00	47.97	320.80	4131.01	119.30N	97.30W	153.94	153.94	320.80	12.30
4205.00	51.66	320.80	4150.36	137.06N	111.78W	176.86	176.86	320.80	12.30
4235.00	55.35	320.80	4168.20	155.74N	127.02W	200.97	200.97	320.80	12.30
4265.00	59.04	320.80	4184.45	175.28N	142.96W	226.18	226.18	320.80	12.30
4295.00	62.73	320.80	4199.05	195.59N	159.52W	252.39	252.39	320.80	12.30

ENERGY DEVELOPMENT CORPORATION
SAN ISEDR0 #5-2
SANDOVAL COUNTY, NEW MEXICO

Page 2

Measured Depth Feet	B O R E - H O L E Inclination Deg	Direction Deg	TRUE Vertical Depth Feet	RECTANGULAR COORDINATES North/South East/West Feet	Feet	VERTICAL SECTION Feet	CLOSURES Distance Feet	Direction Deg	DLS Deg/100'
4325.00	66.42	320.80	4211.92	216.58N	176.64W	279.48	279.48	320.80	12.30
4355.00	70.11	320.80	4223.03	238.17N	194.25W	307.34	307.34	320.80	12.30
4385.00	73.80	320.80	4232.32	260.27N	212.27W	335.86	335.86	320.80	12.30
4415.00	77.49	320.80	4239.76	282.79N	230.64W	364.92	364.92	320.80	12.30
4445.00	81.18	320.80	4245.31	305.63N	249.27W	394.39	394.39	320.80	12.30
4451.67	82.00	320.80	4246.29	310.74N	253.44W	400.99	400.99	320.80	12.30
Start curve									
4461.67	82.12	320.80	4250.43	333.77N	272.22W	430.70	430.70	320.80	.41
4511.67	82.24	320.80	4254.51	356.80N	291.00W	460.42	460.42	320.80	.41
4541.67	82.37	320.80	4258.52	379.84N	309.79W	490.15	490.15	320.80	.41
4550.00	82.40	320.80	4259.63	386.24N	315.01W	498.41	498.41	320.80	.41
Start curve									
4560.00	82.52	320.80	4263.57	409.29N	333.81W	528.15	528.15	320.80	.40
4610.00	82.64	320.80	4267.44	432.34N	352.61W	557.90	557.90	320.80	.40
4640.00	82.76	320.80	4271.25	455.40N	371.42W	587.66	587.66	320.80	.40
4650.00	82.80	320.80	4272.51	463.09N	377.69W	597.58	597.58	320.80	.40
Start curve									
4680.00	82.92	320.80	4276.24	486.16N	396.50W	627.35	627.35	320.80	.40
4710.00	83.04	320.80	4279.90	509.23N	415.32W	657.12	657.12	320.80	.40
4740.00	83.16	320.80	4283.51	532.31N	434.14W	686.91	686.91	320.80	.40
4770.00	83.28	320.80	4287.05	555.40N	452.97W	716.70	716.70	320.80	.40
4800.00	83.40	320.80	4290.53	578.49N	471.80W	746.49	746.49	320.80	.40
4830.00	83.52	320.80	4293.95	601.59N	490.64W	776.30	776.30	320.80	.40
4860.00	83.64	320.80	4297.30	624.69N	509.40W	806.11	806.11	320.80	.40

7137507580

SENT BY: XEROX Telecopier 7017; 7-9-93; 2:40PM;

ENERGY DEVELOPMENT CORPORATION
SAN ISIDRO #5-2
SANDOVAL COUNTY, NEW MEXICO

Page 3

Measured Depth Feet	B O R E - H O L E		TRUE Vertical Depth Feet	R E C T A N G U L A R C O O R D I N A T E S		VERTICAL SECTION Feet	C L O S U R E S		DLS Deg/100'
	Inclination Deg	Direction Deg		North/South Feet	East/West Feet		Distance Feet	Direction Deg	
4890.00	83.76	320.80	4300.59	647.80N	528.33W	835.93	835.93	320.80	.40
4920.00	83.88	320.80	4303.82	670.91N	547.18W	865.75	865.75	320.80	.40
4950.00	84.00	320.80	4306.99	694.03N	566.04W	895.59	895.59	320.80	.40
4980.00	84.12	320.80	4310.09	717.15N	584.90W	925.42	925.42	320.80	.40
5010.00	84.24	320.80	4313.14	740.28N	603.76W	955.27	955.27	320.80	.40
5040.00	84.36	320.80	4316.12	763.41N	622.63W	985.12	985.12	320.80	.40
5070.00	84.48	320.80	4319.03	786.55N	641.50W	1014.98	1014.98	320.80	.40
5100.00	84.60	320.80	4321.89	809.70N	660.37W	1044.84	1044.84	320.80	.40
5130.00	84.72	320.80	4324.68	832.84N	679.25W	1074.71	1074.71	320.80	.40
5160.00	84.84	320.80	4327.41	855.99N	698.13W	1104.59	1104.59	320.80	.40
5190.00	84.96	320.80	4330.08	879.15N	717.02W	1134.47	1134.47	320.80	.40
5220.00	85.08	320.80	4332.68	902.31N	735.91W	1164.36	1164.36	320.80	.40
5250.00	85.20	320.80	4335.22	925.48N	754.80W	1194.25	1194.25	320.80	.40
5280.00	85.32	320.80	4337.70	948.65N	773.70W	1224.15	1224.15	320.80	.40
5310.00	85.44	320.80	4340.12	971.82N	792.60W	1254.05	1254.05	320.80	.40
5340.00	85.56	320.80	4342.47	994.99N	811.50W	1283.96	1283.96	320.80	.40
5370.00	85.68	320.80	4344.76	1018.18N	830.40W	1313.87	1313.87	320.80	.40
5400.00	85.80	320.80	4346.99	1041.36N	849.31W	1343.79	1343.79	320.80	.40
5430.00	85.92	320.80	4349.15	1064.55N	868.22W	1373.71	1373.71	320.80	.40
5460.00	86.04	320.80	4351.26	1087.74N	887.14W	1403.64	1403.64	320.80	.40
5490.00	86.16	320.80	4353.30	1110.93N	906.05W	1433.56	1433.56	320.80	.40
5520.00	86.28	320.80	4355.28	1134.13N	924.97W	1463.50	1463.50	320.80	.40
5550.00	86.40	320.80	4357.19	1157.33N	943.90W	1493.44	1493.44	320.80	.40
5580.00	86.52	320.80	4359.04	1180.54N	962.82W	1523.38	1523.38	320.80	.40

Page 4

P. 15

ENERGY DEVELOPMENT CORPORATION
SAN ISIDRO #5-2
SANDOVAL COUNTY, NEW MEXICO

Page 5

Measured Depth Feet	B O R E - Inclination Deg	H O L E Direction Deg	TRUE		R E C T A N G U L A R		VERTICAL SECTION Feet	C L O S U R E S		DLS Deg/100'
			Vertical Depth Feet	COORDINATES North/South East/West Feet	Feet	Feet		Distance Feet	Direction Deg	
6253.00	89.00	320.00	4384.66	1701.65N	1387.83W	2195.84	2195.84	320.00	.33	
PMTL										
Final Station Closure Distance:			2195.84 Feet; Direction: N39 12W							



July 9, 1993

VIA FAX

The Gary-Williams Company
370 17th Street
Suite 5300
Denver, CO 80203

Attention: Mr. Craig Ambler

RE: SAN ISIDRO WELL NO. 5-2 WAIVER
SAN ISIDRO (SHALLOW) UNIT
SANDOVAL COUNTY, TEXAS

Dear Mr. Ambler:

As you are aware, Energy Development Corporation intends to drill the San Isidro Unit Well No. 5-2 as a Horizontal well with a surface location of 1750' FEL x 475' FNL of Section 5, T20N-R2W, N.M.P.M. and a bottom-hole location of 1975' FEL x 1200' FSL of Section 32, T12N-R2W, N.M.P.M., Sandoval County, New Mexico. The proposed well will provide for a 5300' vertical wellbore and a 2200' horizontal displacement. Attached herewith is a plat of the proposed drilling block and location of the well.

As the operator of Section 4, T20N-R2W, N.M.P.M., being an offset tract outside of the unit boundaries, EDC respectfully requests your waiver of objection to the proposed San Isidro Unit Well No. 5-2 insofar as:

1. The proposed well is a non-standard location;
2. The proposed well is scheduled as a horizontal test well;
3. The proposed well is scheduled to cross the section line between Section 5, T20N-R2W and Section 32, T21N-R2W, N.M.P.M.

Assuming you have no objection, please indicate your waiver of objection by executing this letter in the space indicated and sending one telecopy of same to my attention at (713) 750-7580, as well as one telecopy to Mr. Larry Van Ryan at the NMOCD at (505) 827-5741.

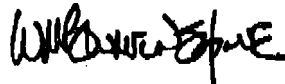
Energy Development Corporation
A subsidiary of Public Service Enterprise Group Incorporated

1000 Louisiana, Suite 2900, Houston, Texas 77002 (713) 750-7300

81 P 085205212 13:38 181 26-09-93 FRI
The Gary Williams Company
July 9, 1993
Page Two

Thank you for your assistance in this matter.

Very truly yours,



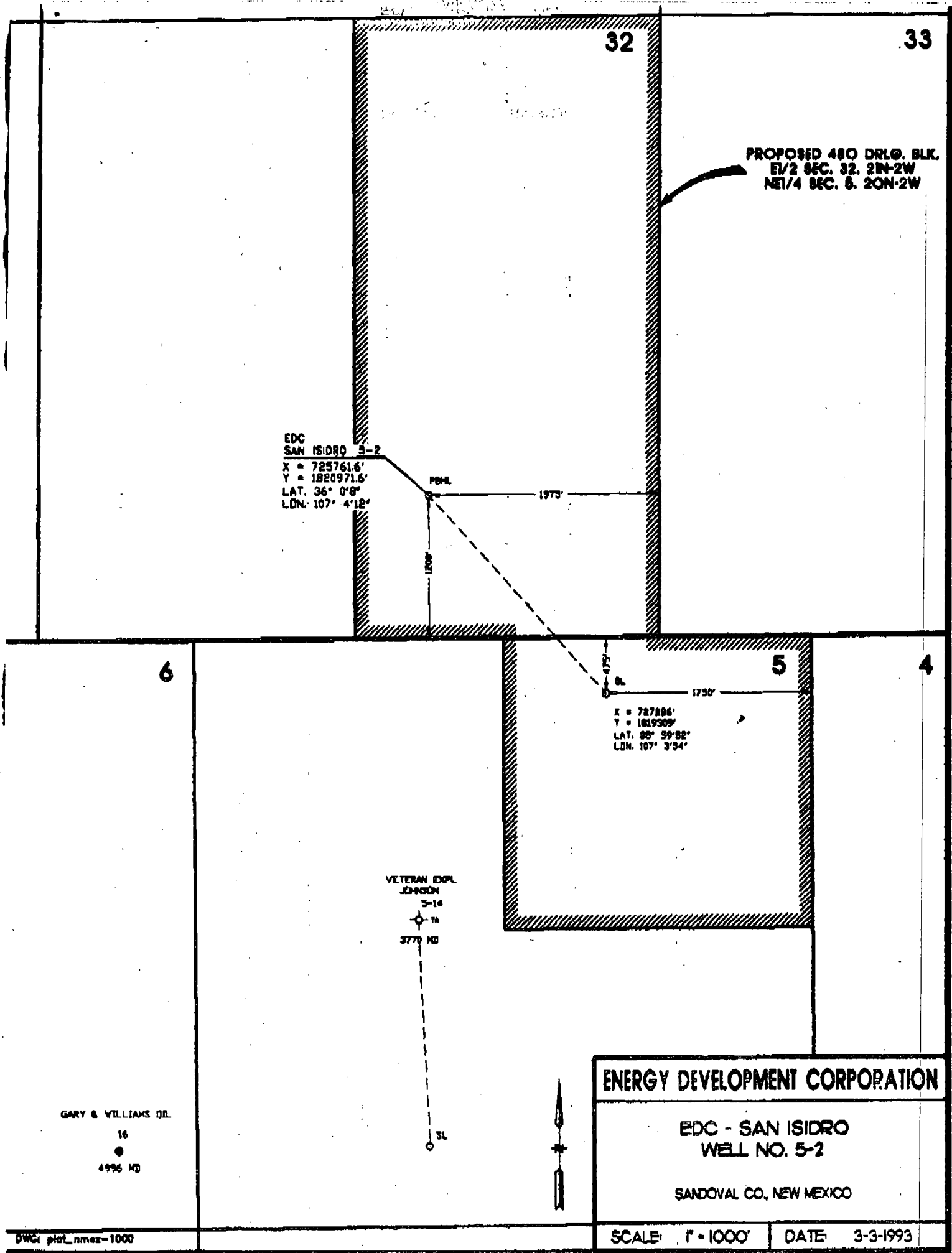
Mark Blumenshine
Landman

WMB/pma

THE GARY WILLIAMS COMPANY HEREBY WAIVES OBJECTION TO THE SAN ISIDRO WELL NO.
5-2 WELL NO. 5-2 AS INDICATED HEREINABOVE THIS 9TH DAY OF JULY, 1993.

THE GARY WILLIAMS COMPANY

Craig Ambler



TELECOPY TRANSMITTAL FORM
ENERGY DEVELOPMENT CORPORATION

1000 Louisiana Street, Suite 2900
Houston, Texas 77002

TO: MR. ARRY VAN RYAN Time: _____
COMPANY: NMOCO
TELECOPY NUMBER: 505-827-5741

FROM: M. BLUMENBERG PHONE NO.: 713-750-7535
NUMBER OF PAGES (INCLUDING THIS FORM): 3

MESSAGE:

PLEASE DELIVER TO M. VAN RYAN IMMEDIATELY.

TELECOPY NUMBER SENT FROM: (713) 750-7580

PLEASE CALL (713) 750-7300 OR THE NUMBER SHOWN ABOVE IF YOU HAVE ANY QUESTIONS.

The information contained in this FAX is confidential and/or privileged. This FAX is intended to be reviewed initially by only the individual named above. If the reader of this TRANSMITTAL PAGE is not the intended recipient or a representative of the intended recipient, you are hereby notified that any review, dissemination or copying of this FAX or the information contained herein is prohibited. If you have received this FAX in error, please immediately notify the sender by telephone and return this FAX to the sender at the above address. Thank you.

1000 Louisiana, Suite 2500, Houston, Texas 77002 (713) 760-7300
A subsidiary of Public Service Enterprise Group Incorporated
Energy Development Corporation

Assuming you have no objection, please indicate your waiver of objection by
returning this letter in the space indicated and sending the telecopy of
same to my attention at (713) 760-7300, as well as one telecopy to Mr. Larry
Van Ryan at the MCOB at (505) 827-5741.

1. The proposed well is a non-standard location.
2. The proposed well is scheduled as a horizontal test well.
3. The proposed well is scheduled to cross the section line
between Section 8, T20N-R2W and Section 32, T21N-R2W.
N.M.P.M.

As you are aware, Energy Development Corporation intends to drill the San
Isidro Unit Well No. 8-2 as a horizontal well with a surface location of
1750' ETL x 475' ETL of Section 8, T20N-R2W, N.M.P.M. and a bottom-hole
location of 1975' ETL x 1200' ETL of Section 32, T21N-R2W, N.M.P.M.
Sandoval County, New Mexico. The proposed well will provide for a 5300'
vertical wellbore and a 2200' horizontal displacement. Attached herewith is
a plot of the proposed drilling block and location of the well.
As the operator of Section 4, T20N-R2W, N.M.P.M., being an owner lease
outside of the unit boundaries, EDC respectfully requests your waiver of
objection to the proposed San Isidro Unit Well No. 8-2 insofar as:

Dear Mr. Ambler:

RE: SAN ISIDRO UNIT NO. 8-2 WEAVER
SAN ISIDRO (SANDOW) UNIT
SANDOVAL COUNTY, NEW MEX

Attention: Mr. Craig Ambler

370 17th Street
Suite 8300
Denver, CO 80203
The Gary-Williams Company

VIA FAX

July 9, 1993



THE GARY WILLIAMS COMPANY
Create/Amble

THE GARY WILLIAMS COMPANY HEREBY WAIVES OBJECTION TO THE SAY IDING WITH NO.
S-2 WITH NO. S-2 AS INDICATED HEREIN AND THE DAY OF JULY, 1993.

WMB/pma

Very truly yours,
WILLIAMS
Mark Williamson
Lawman

Thank you for your assistance in this matter.

THE GARY WILLIAMS COMPANY
JULY 9, 1993
Page Two

ENERGY DEVELOPMENT CORPORATION

1000 LOUISIANA, STE. 2900
HOUSTON, TX 77002

TO: LARRY VAN RYAN
COMPANY: NHOC
TELECOPY NUMBER: 505 827 5741
FROM: MARK GERDING
MESSAGE: HARD COPY TO FOLLOW
ORIGINAL

The information contained in this FAX is confidential and/or privileged. This FAX is intended to be reviewed initially
by only the individual names above. If the reader of this TRANSMITTAL PAGE is not the intended recipient or a
representative of the intended recipient, you are hereby notified that any review, dissemination or copying of this FAX
or the information contained herein is prohibited. If you have received this FAX in error, please immediately notify
the sender by telephone and return this FAX to the sender at the above address. Thank you.

PLEASE CALL 713/750-7303 IF PROBLEMS

SENT FROM: 713/750-7581

1161

Admin.
Order

FAX

Robert Kent (BLM) Mark Gerding 713-750-7581

FAX

761-8911

EDC

*

Geologic reason for NSP crossing section
line.Visited w/ Robert Kent (BLM) they will approve
well.



July 14, 1993

New Mexico Oil Conservation
Division
P. O. Box 2088
Santa Fe, NM 87504-2088
Attn: Larry Van Ryan

Re: San Isidro Well #5-2
Rio Puerco (Mancos) Pool
Sandoval County, NM

Gentlemen:

As per special operating rule 2(d) for the San Isidro (shallow) unit, Energy Development Corporation requests administrative approval to cross governmental section lines, drill a horizontal well, and drill from an irregular location. The reasons for this request are as follows:

1. The horizontal portion of the well is to follow a seismic line to maintain geologic control. Both the surface and bottom hole locations are located on the seismic line.
2. The horizontal portion of the well will penetrate the Mancos formation at a flexure point where it is calculated to have a maximum concentration of natural fractures.

Please advise if additional information is required.

Sincerely,

Mark S. Garding
Supervisor, Reg. and Environ. Affairs

Energy Development Corporation
A subsidiary of Public Service Enterprise Group Incorporated

1000 Louisiana, Suite 2900, Houston, Texas 77002 (713) 750-7300

Energy Development Corporation
1000 Louisiana ,Suite 2900
Houston, Texas 77002

Attention: Mark Blumenshine

Gentlemen:

Reference is made to your application dated July 9, 1993 for a non-standard oil well location, for approval to intentionally deviate a well (drill a horizontal well) and to form a 480 acre proration unit consisting of contiguous quarter sections from more than one government section. The subject well being your San Isidro 5 Well No. 2 to be located 475 feet from the North line and 1750 feet from the East line (Unit B) of Section 5, Township 20N, Range 2W, NMPM, Rio Puerco- Mancos Pool, Sandoval County, New Mexico. The NE/4 of said Section 5 and the E/2 of Section 32, Township 21N, Range 2W, NMPM shall be dedicated to the well forming a non-standard 458.75 acre spacing and proration unit.

The Division Director Finds That:

- (1) The well is located in the San Isidro (Shallow) Unit which is governed by special rules and regulations as stated in Orders No. R-9330 and R-9330-A.
- (2) The well is located on the edge of the subject unit and requires that the offset operators be notified of requests for administrative approvals.
- (3) A waiver from Gary-Williams Company, the operator of the offsetting acreage, was submitted.
- (4) The geologic reason for the non-standard proration unit, contiguous quarter sections from more than one governmental section, is requested so that the proposed wellbore will follow the seismic line, which is the control for defining the area of maximum concentration of fractures.
- (5) The surface location of the well is non-standard and the horizontal portion of the well will be nearer than 660 feet from the outer boundary at one point.

It Is Therefore Ordered That:

- (1) The non-standard surface location and wellbore location are approved.
- (2) The drilling of a horizontal well is approved.
- (3) The non-standard proration unit is approved.
- (4)

May 21, 1991

Attention: _____

Administrative Order DD- 85

Dear _____

the Oil Conservation Division Order No. R-9330 Rule B(B)
Under the provisions of ~~General Rule 111 (c), (d) and (e)~~, Energy Development Corp.
made application to the New Mexico Oil Conservation Division on
7-9-93, for authorization to directionally drill its proposed
SAN ISIDRO No. 5-2 well, Sandoval County, New Mexico.

The Division Director Finds That:

- order R-9330, Rule B(B)*
- (1) The application has been duly filed under the provisions of ~~Rule 111(d) and (e) of the Division General Rules and Regulations;~~
 - (2) Satisfactory information has been provided that all offset operators have been duly notified;
 - (3) The applicant has presented satisfactory evidence that all requirements prescribed in General Rule 111 will be met; and
 - (4) No objections have been received within the waiting period prescribed by said rule.

10 1 4 1283

TEST 1 3 4 5 6 7 8 9 10

NUMBER 1000 EVIOM 1000000 1000000

Submit to Appropriate
District Office
State Lease - 6 copies
Fee Lease - 5 copies

State of New Mexico
Energy, Minerals and Natural Resources Department

Form C-101
Revised 1-1-89

DISTRICT I
P.O. Box 1980, Hobbs, NM 88240

DISTRICT II
P.O. Drawer DD, Artesia, NM 88210

DISTRICT III
1000 Rio Brazos Rd., Aztec, NM 87410

OIL CONSERVATION DIVISION
P.O. Box 2088
Santa Fe, New Mexico 87504-2088

NM 7765

API NO. (assigned by OCD on New Wells)
5. Indicate Type of Lease STATE <input type="checkbox"/> FEE <input checked="" type="checkbox"/>
6. State Oil & Gas Lease No.

APPLICATION FOR PERMIT TO DRILL, DEEPEN, OR PLUG BACK					
1a. Type of Work: DRILL <input checked="" type="checkbox"/> RE-ENTER <input type="checkbox"/> DEEPEN <input type="checkbox"/> PLUG BACK <input type="checkbox"/>				7. Lease Name or Unit Agreement Name SAN ISIDRO S	
b. Type of Well: OIL WELL <input checked="" type="checkbox"/> GAS WELL <input type="checkbox"/> OTHER <input type="checkbox"/> SINGLE ZONE <input checked="" type="checkbox"/> MULTIPLE ZONE <input type="checkbox"/>				8. Well No. 2	
2. Name of Operator ENERGY DEVELOPMENT CORPORATION				9. Pool name or Wildcat MANCOS	
3. Address of Operator 1000 LOUISIANA STE 2900 HOUSTON TX 77002					
4. Well Location Unit Letter B : 475 Feet From The NORTH Line and 1750 Feet From The EAST Line 5 Section 20 NORTH Township 2 WEST Range NM PM SANDOVAL County					
10. Proposed Depth 6253 ND		11. Formation MANCOS		12. Rotary or C.T. ROTARY	
13. Elevations (Show whether DF, RT, GR, etc.) 6923.1 GR		14. Kind & Status Plug Bond		15. Drilling Contractor FOUR CORNERS	
				16. Approx. Date Work will start 7/12/93	
17. PROPOSED CASING AND CEMENT PROGRAM					
SIZE OF HOLE	SIZE OF CASING	WEIGHT PER FOOT	SETTING DEPTH	SACKS OF CEMENT	EST. TOP
12 3/4"	9 5/8"	36.0 #	350'	195	SURFACE
8 3/4"	7"	23.0 #	3600'	740	SURFACE

ENERGY DEVELOPMENT CORPORATION PROPOSES TO DRILL A VERTICAL PILOT HOLE TO A DEPTH OF APPROXIMATELY 5300' TVD. THE MANCOS 'B', 'C', AND SENILLA INTERVALS WILL BE CORED FOR EVALUATION. FOLLOWING THE EVALUATION, A CEMENT PLUG WILL BE PLACED IN THE OPEN HOLE SECTION AND DRESSED OFF AT 3785'. THE VERTICAL SECTION WILL BE KICKED OFF AT THAT POINT. APPROXIMATELY 2196' OF HORIZONTAL HOLE WILL BE DRILLED IN THE DIRECTION OF N39.2° W.

IN ABOVE SPACE DESCRIBE PROPOSED PROGRAM: IF PROPOSAL IS TO DEEPEN OR PLUG BACK, GIVE DATA ON PRESENT PRODUCTIVE ZONE AND PROPOSED NEW PRODUCTIVE ZONE. GIVE BLOWOUT PREVENTER PROGRAM, IF ANY.

I hereby certify that the information above is true and complete to the best of my knowledge and belief.

SIGNATURE

TITLE

Sup Reg & Env Affairs

DATE

7/8/93
(715)

TYPE OR PRINT NAME

MARK S. GERDING

TELEPHONE NO.

750-7536

(This space for State Use)

APPROVED BY

TITLE

DATE

CONDITIONS OF APPROVAL, IF ANY:

32

33

PROPOSED 480 DRLG. BLK.
E1/2 SEC. 32. 21N-2W
NE1/4 SEC. 5. 20N-2W

320

EDC
SAN ISIDRO 5-2

X = 725761.6'
Y = 1820971.6'
LAT. 36° 0'8"
LON. 107° 4'12"

PB-H

1975'

1200'

6

29.31

SL

29.44 5

1750'

X = 727286'
Y = 1819309'
LAT. 35° 59'32"
LON. 107° 3'54"

4

80

138.75

458.75

VETERAN EXPL
JOHNSON

5-14



3770 MD

SL

GARY & WILLIAMS OIL

16

4996 MD

ENERGY DEVELOPMENT CORPORATION

EDC - SAN ISIDRO
WELL NO. 5-2

SANDOVAL CO. NEW MEXICO

Santa Fe, New Mexico 87504-2088

P.O. Box 1980, Hobbs, NM 88240

P.O. Drawer DD, Artesia, NM 88210

1000 Rio Brazos Rd., Aztec, NM 87410

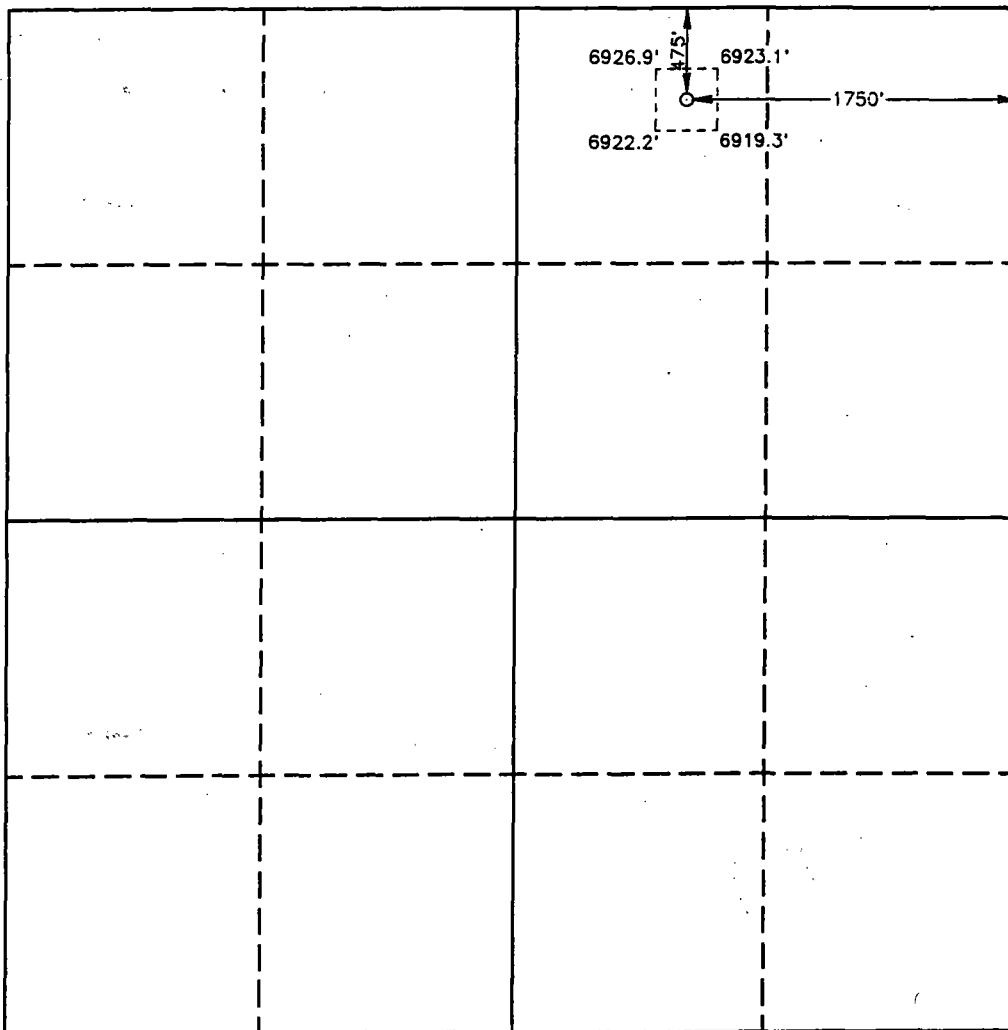
All Distances must be from the outer boundaries of the section

Operator ENERGY DEVELOPMENT CORPORATION		Lease SAN ISIDRO 5		Well No. 2
Unit Letter B	Section 5	Township 20 NORTH	Range 2 WEST NMPM	County SANDOVAL
Actual Footage Location of Well:				
475 feet from the NORTH line and		1750 feet from the EAST line		
Ground Level Elev. 6923.1'	Producing Formation Hualcos	Pool Rio Puerco		Dedicated Acreage: 480 Acres

1. Outline the acreage dedicated to the subject well by colored pencil or hatchure marks on the plat below.
2. If more than one lease is dedicated to the well, outline each and identify the ownership thereof (both as to working interest and royalty).
3. If more than one lease of different ownership is dedicated to the well, have the interest of all owners been consolidated by communitization, unitization, force-pooling, etc.?
- ☐ Yes ☐ No If answer is "yes" type of consolidation _____

If answer is "no" list of owners and tract descriptions which have actually been consolidated. (Use reverse side of this form necessary. _____)

No allowable will be assigned to the well unit all interests have been consolidated (by communitization, unitization, forced-pooling, otherwise) or until a non-standard unit, eliminating such interest, has been approved by the Division.



OPERATOR CERTIFICATION

I hereby certify the the information
contained herein is true and complete to the
best of my knowledge and belief.

Signature

Printed Name _____

Position**Company**

Date _____

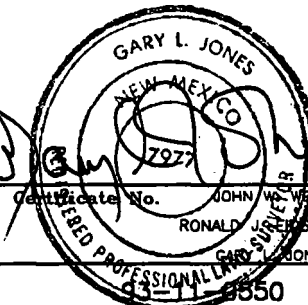
SURVEYOR CERTIFICATION

I hereby certify that the well location shown on this plat was plotted from field notes of actual surveys made by me or under my supervision and that the same is true and correct to the best of my knowledge and belief.

Date Surveyed

APRIL 2, 1993

**Signature & Seal of
Professional Surveyor**



Certificate No. JOHN W. WEST. 676

RONALD J. JOHNSON, 3239

GARY S. JONES, 7977

Submit to Appropriate
District Office
State Lease - 6 copies
Fee Lease - 5 copies

State of New Mexico
Energy, Minerals and Natural Resources Department

Form C-101
Revised 1-1-89

OIL CONSERVATION DIVISION

DISTRICT I
P.O. Box 1980, Hobbs, NM 88240

DISTRICT II
P.O. Drawer DD, Artesia, NM 88210

DISTRICT III
1000 Rio Brazos Rd., Aztec, NM 87410

P.O. Box 2088
Santa Fe, New Mexico 87504-2088

API NO. (assigned by OCD on New Wells)
5. Indicate Type of Lease STATE <input type="checkbox"/> FEE <input checked="" type="checkbox"/>
6. State Oil & Gas Lease No.

APPLICATION FOR PERMIT TO DRILL, DEEPEN, OR PLUG BACK

1a. Type of Work: DRILL <input checked="" type="checkbox"/> RE-ENTER <input type="checkbox"/> DEEPEN <input type="checkbox"/> PLUG BACK <input type="checkbox"/>		7. Lease Name or Unit Agreement Name SAN ISIDRO S			
b. Type of Well: OIL WELL <input checked="" type="checkbox"/> GAS WELL <input type="checkbox"/> OTHER <input type="checkbox"/> SINGLE ZONE <input checked="" type="checkbox"/> MULTIPLE ZONE <input type="checkbox"/>		8. Well No. 2			
2. Name of Operator ENERGY DEVELOPMENT CORPORATION		9. Pool name or Wildcat MANCOS			
3. Address of Operator 1000 LOUISIANA STE 2900 HOUSTON TX 77002					
4. Well Location Unit Letter B : 475 Feet From The NORTH Line and 1750 Feet From The EAST Line 5 Section 20 NORTH Township 2 WEST Range NMPM SANDOVAL County					
10. Proposed Depth 6253 MD		11. Formation MANCOS	12. Rotary or C.T. ROTARY		
13. Elevations (Show whether DF, RT, GR, etc.) 6923.1 GR	14. Kind & Status Plug Bond	15. Drilling Contractor FOUR CORNERS	16. Approx. Date Work will start 7/12/93		
17. PROPOSED CASING AND CEMENT PROGRAM					
SIZE OF HOLE	SIZE OF CASING	WEIGHT PER FOOT	SETTING DEPTH	SACKS OF CEMENT	EST. TOP
12 3/4"	9 5/8"	36.0 #	350'	195	SURFACE
8 3/4"	7"	23.0 #	3600'	740	SURFACE

ENERGY DEVELOPMENT CORPORATION PROPOSES TO DRILL A VERTICAL PILOT HOLE TO A DEPTH OF APPROXIMATELY 5300' TVD. THE MANCOS 'B', 'C', AND SEMILLA INTERVALS WILL BE CORED FOR EVALUATION. FOLLOWING THE EVALUATION, A CEMENT PLUG WILL BE PLACED IN THE OPEN HOLE SECTION AND DRESSED OFF AT 3785'. THE VERTICAL SECTION WILL BE KICKED OFF AT THAT POINT. APPROXIMATELY 2196' OF HORIZONTAL HOLE WILL BE DRILLED IN THE DIRECTION OF N39.2° W.

IN ABOVE SPACE DESCRIBE PROPOSED PROGRAM: IF PROPOSAL IS TO DEEPEN OR PLUG BACK, GIVE DATA ON PRESENT PRODUCTIVE ZONE AND PROPOSED NEW PRODUCTIVE ZONE. GIVE BLOWOUT PREVENTER PROGRAM, IF ANY.

I hereby certify that the information above is true and complete to the best of my knowledge and belief.

SIGNATURE

TITLE

SUP REG & ENV AFFAIRS

DATE

7/8/93
(713)

TYPE OR PRINT NAME

HARK S. GERDING

TELEPHONE NO. 750-7536

(This space for State Use)

APPROVED BY

TITLE

DATE

CONDITIONS OF APPROVAL, IF ANY:

32

33

PROPOSED 480 DRLG. BLK.
E1/2 SEC. 32. 21N-2W
NE1/4 SEC. 5. 20N-2W

EDC
SAN ISIDRO 5-2
X = 725761.6'
Y = 1820971.6'
LAT. 36° 0' 8"
LON. 107° 4' 12"

PB-L

1975'

1200'

6

5

4

X = 727286'
Y = 1819309'
LAT. 35° 59' 52"
LON. 107° 3' 54"

VETERAN EXPL
JOHNSON
5-14

TA

3770 MD

SL

GARY & WILLIAMS OIL

16

4996 MD

ENERGY DEVELOPMENT CORPORATION

EDC - SAN ISIDRO
WELL NO. 5-2

SANDOVAL CO., NEW MEXICO

Submit to Appropriate
District Office
State Lease - 4 copies
Fee Lease - 3 copies

State of New Mexico
Energy, Minerals and Natural Resources Department

Form C-102
Revised 1-1-89

OIL CONSERVATION DIVISION

P.O. Box 2088
Santa Fe, New Mexico 87504-2088

DISTRICT I

P.O. Box 1980, Hobbs, NM 88240

DISTRICT II

P.O. Drawer DD, Artesia, NM 88210.

DISTRICT III

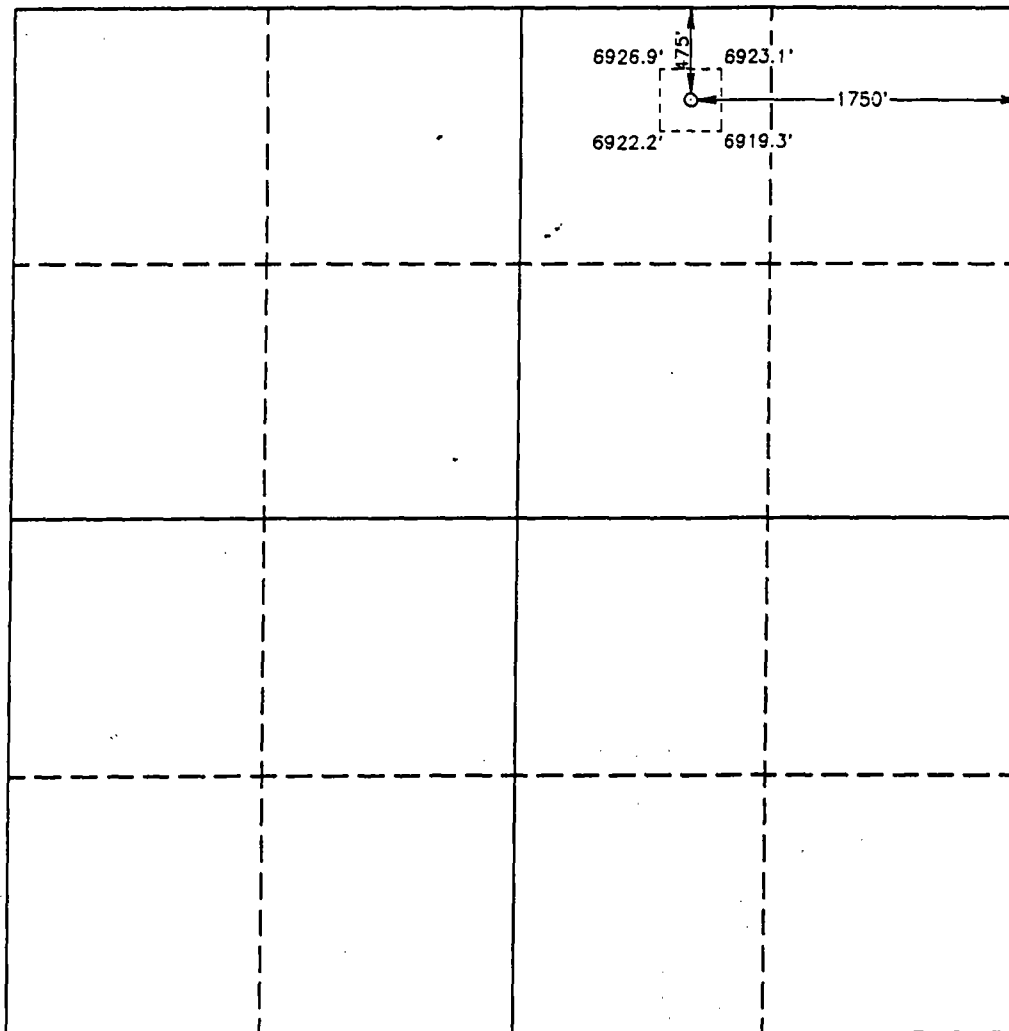
1000 Rio Brazos Rd., Aztec, NM 87410

WELL LOCATION AND ACREAGE DEDICATION PLAT

All Distances must be from the outer boundaries of the section

Operator ENERGY DEVELOPMENT CORPORATION			Lease SAN ISIDRO 5		Well No. 2
Unit Letter B	Section 5	Township 20 NORTH	Range 2 WEST	NMPM	County SANDOVAL
Actual Footage Location of Well: 475 feet from the NORTH line and 1750 feet from the EAST line					
Ground Level Elev. 6923.1'	Producing Formation HALLCOB	Pool RIO PUERTO		Dedicated Acreage: 480 Acres	

- Outline the acreage dedicated to the subject well by colored pencil or hatchure marks on the plat below.
- If more than one lease is dedicated to the well, outline each and identify the ownership thereof (both as to working interest and royalty).
- If more than one lease of different ownership is dedicated to the well, have the interest of all owners been consolidated by communitization, unitization, force-pooling, etc?
☐ Yes ☐ No If answer is "yes" type of consolidation _____
If answer is "no" list of owners and tract descriptions which have actually been consolidated. (Use reverse side of this form necessary.)
No allowable will be assigned to the well unit all interests have been consolidated (by communitization, unitization, forced-pooling, otherwise) or until a non-standard unit, eliminating such interest, has been approved by the Division.



OPERATOR CERTIFICATION

I hereby certify the the information contained herein is true and complete to the best of my knowledge and belief.

Signature
MARK S. GORDON
Printed Name
SUP. REG. ENV. AFFAIRS
Position
ENERGY DEVELOPMENT CORP.
Company
7/8/93
Date

SURVEYOR CERTIFICATION

I hereby certify that the well location shown on this plat was plotted from field notes of actual surveys made by me or under my supervision and that the same is true and correct to the best of my knowledge and belief.

Date Surveyed
APRIL 2, 1993

Signature & Seal of
Professional Surveyor

Certificate No. **JOHN W. WEST, 676**
RONALD J. JOHNSON, 3239
GARY L. JONES, 7927
63-11-1850

Submit to Appropriate
District Office
State Lease - 6 copies
Fee Lease - 5 copies

State of New Mexico
Energy, Minerals and Natural Resources Department

Form C-101
Revised 1-1-89

OIL CONSERVATION DIVISION

DISTRICT I
P.O. Box 1980, Hobbs, NM 88240

DISTRICT II
P.O. Drawer DD, Artesia, NM 88210

DISTRICT III
1000 Rio Brazos Rd., Aztec, NM 87410

P.O. Box 2088
Santa Fe, New Mexico 87504-2088

API NO. (assigned by OCD on New Wells)

5. Indicate Type of Lease

STATE ☐

FEE ☒

6. State Oil & Gas Lease No.

APPLICATION FOR PERMIT TO DRILL, DEEPEN, OR PLUG BACK

1a. Type of Work:

DRILL ☒

RE-ENTER ☐

DEEPEN ☐

PLUG BACK ☐

b. Type of Well:

OIL
WELL ☒

GAS
WELL ☐

OTHER ☐

SINGLE
ZONE ☒

MULTIPLE
ZONE ☐

7. Lease Name or Unit Agreement Name

SAN ISIDRO 6

2. Name of Operator

ENERGY DEVELOPMENT CORPORATION

8. Well No.

2

3. Address of Operator

1000 LOUISIANA STE 2900 HOUSTON TX 77002

9. Pool name or Wildcat

MANCOS

4. Well Location

Unit Letter

B

: 475

Feet From The

NORTH

Line and

1750

Feet From The

EAST

Line

5 Section

20 NORTH

Township

2 WEST

Range

NMPM

SANDOVAL

County

10. Proposed Depth

6253 MD

11. Formation

MANCOS

12. Rotary or C.T.

ROTARY

13. Elevations (Show whether DF, RT, GR, etc.)

6923.1 GR

14. Kind & Status Plug. Bond

15. Drilling Contractor

FOUR CORNERS

16. Approx. Date Work will start

7/12/93

17. PROPOSED CASING AND CEMENT PROGRAM

SIZE OF HOLE	SIZE OF CASING	WEIGHT PER FOOT	SETTING DEPTH	SACKS OF CEMENT	EST. TOP
12 3/4"	9 5/8"	36.0 #	350'	195	SURFACE
8 3/4"	7"	23.0 #	3600'	740	SURFACE

ENERGY DEVELOPMENT CORPORATION PROPOSES TO DRILL A VERTICAL PILOT HOLE TO A DEPTH OF APPROXIMATELY 5300' TVD. THE MANCOS 'B', 'C', AND SEMILLA INTERVALS WILL BE CORED FOR EVALUATION. FOLLOWING THE EVALUATION, A CEMENT PLUG WILL BE PLACED IN THE OPEN HOLE SECTION AND DRESSED OFF AT 3785'. THE VERTICAL SECTION WILL BE KICKED OFF AT THAT POINT. APPROXIMATELY 2196' OF HORIZONTAL HOLE WILL BE DRILLED IN THE DIRECTION OF N39.2° W.

IN ABOVE SPACE DESCRIBE PROPOSED PROGRAM: IF PROPOSAL IS TO DEEPEN OR PLUG BACK, GIVE DATA ON PRESENT PRODUCTIVE ZONE AND PROPOSED NEW PRODUCTIVE ZONE. GIVE BLOWOUT PREVENTER PROGRAM, IF ANY.

I hereby certify that the information above is true and complete to the best of my knowledge and belief.

SIGNATURE

TITLE

Sup Reg & Env Affairs

DATE

7/8/93

TYPE OR PRINT NAME

MARK S. GERDING

TELEPHONE NO.

750-7536

(This space for State Use)

APPROVED BY

TITLE

DATE

CONDITIONS OF APPROVAL, IF ANY:

32

33

PROPOSED 480 DRLG. BLK.
E1/2 SEC. 32, 21N-2W
NE1/4 SEC. 5, 20N-2W

EDC
SAN ISIDRO 5-2
X = 725761.6'
Y = 1820971.6'
LAT. 36° 0'8"
LON. 107° 4'12"

PB-H

1975'

1200'

6

5

4

X = 727286'
Y = 1819309'
LAT. 35° 59'52"
LON. 107° 3'54"

VETERAN EXPL
JOHNSON

5-14



3770 MD

SL

GARY & WILLIAMS OIL

16

4996 MD

ENERGY DEVELOPMENT CORPORATION

EDC - SAN ISIDRO
WELL NO. 5-2

SANDOVAL CO., NEW MEXICO

Submit to Appropriate
District Office
State Lease - 4 copies
Fee Lease - 3 copies

State of New Mexico
Energy, Minerals and Natural Resources Department

Form C-102
Revised 1-1-89

OIL CONSERVATION DIVISION

P.O. Box 2088
Santa Fe, New Mexico 87504-2088

DISTRICT I

P.O. Box 1980, Hobbs, NM 88240

DISTRICT II

P.O. Drawer DD, Artesia, NM 88210.

DISTRICT III

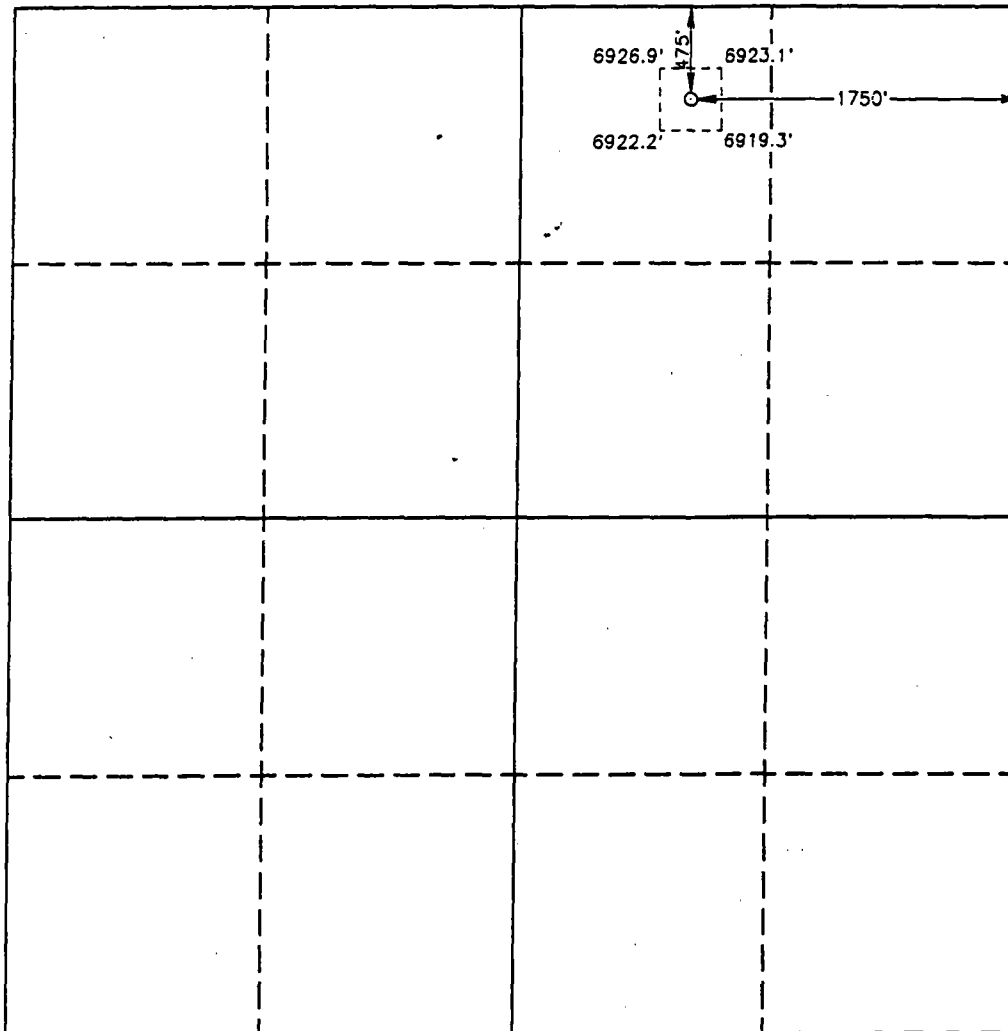
1000 Rio Brazos Rd., Aztec, NM 87410

WELL LOCATION AND ACREAGE DEDICATION PLAT

All Distances must be from the outer boundaries of the section

Operator ENERGY DEVELOPMENT CORPORATION			Lease SAN ISIDRO 5		Well No. 2
Unit Letter B	Section 5	Township 20 NORTH	Range 2 WEST	NMPM	County SANDOVAL
Actual Footage Location of Well: 475 feet from the NORTH line and 1750 feet from the EAST line					
Ground Level Elev. 6923.1'	Producing Formation Huacosa	Pool Rio Puerco		Dedicated Acreage: 480 Acres	

- Outline the acreage dedicated to the subject well by colored pencil or hachure marks on the plat below.
- If more than one lease is dedicated to the well, outline each and identify the ownership thereof (both as to working interest and royalty).
- If more than one lease of different ownership is dedicated to the well, have the interest of all owners been consolidated by communization, unitization, force-pooling, etc.?
☐ Yes ☐ No If answer is "yes" type of consolidation _____
If answer is "no" list of owners and tract descriptions which have actually been consolidated. (Use reverse side of this form necessary.)
No allowable will be assigned to the well unit all interests have been consolidated (by communization, unitization, forced-pooling, otherwise) or until a non-standard unit, eliminating such interest, has been approved by the Division.



OPERATOR CERTIFICATION

I hereby certify the the information
contained herein is true and complete to the
best of my knowledge and belief.

Signature
MARK S. GORDON
Printed Name
SUP REG & ENV AFFAIRS
Position
ENERGY DEVELOPMENT CORP
Company
7/8/93
Date

SURVEYOR CERTIFICATION

I hereby certify that the well location shown
on this plat was plotted from field notes of
actual surveys made by me or under my
supervision and that the same is true and
correct to the best of my knowledge and
belief.

Date Surveyed
APRIL 2, 1993

Signature & Seal of
Professional Surveyor

GARY L. JONES
NEW MEXICO
7927
Certificate No. JOHN W. WEST, 676
RONALD J. JOHNSON, 3239
GARY L. JONES, 7927
63-11-2850

Submit to Appropriate
District Office
State Lease - 6 copies
Fee Lease - 5 copies

State of New Mexico
Energy, Minerals and Natural Resources Department

Form C-101
Revised 1-1-89

OIL CONSERVATION DIVISION

P.O. Box 2088
Santa Fe, New Mexico 87504-2088

DISTRICT I
P.O. Box 1980, Hobbs, NM 88240

DISTRICT II
P.O. Drawer DD, Artesia, NM 88210

DISTRICT III
1000 Rio Brazos Rd., Aztec, NM 87410

API NO. (assigned by OCD on New Wells)

5. Indicate Type of Lease

STATE ☐

FEE ☒

6. State Oil & Gas Lease No.

APPLICATION FOR PERMIT TO DRILL, DEEPEN, OR PLUG BACK

1a. Type of Work:

DRILL ☒

RE-ENTER ☐

DEEPEN ☐

PLUG BACK ☐

b. Type of Well:

OIL
WELL ☒

GAS
WELL ☐

OTHER ☐

SINGLE
ZONE ☒

MULTIPLE
ZONE ☐

7. Lease Name or Unit Agreement Name

SAN ISIDRO 6

2. Name of Operator

ENERGY DEVELOPMENT CORPORATION

8. Well No.

2

3. Address of Operator

1000 LOUISIANA STE 2900 HOUSTON TX 77002

9. Pool name or Wildcat

MANCOS

4. Well Location

Unit Letter

B : 475 Feet From The NORTH

Line and 1750

Feet From The EAST

Line

5 Section 20 NORTH Township 2 WEST Range

NMPM

SANDOVAL

County

10. Proposed Depth

6253 MD

11. Formation

MANCOS

12. Rotary or C.T.

ROTARY

13. Elevations (Show whether DF, RT, GR, etc.)

6923.1 GR

14. Kind & Status Plug Bond

15. Drilling Contractor

FOUR CORNERS

16. Approx. Date Work will start

7/12/93

17. PROPOSED CASING AND CEMENT PROGRAM

SIZE OF HOLE	SIZE OF CASING	WEIGHT PER FOOT	SETTING DEPTH	SACKS OF CEMENT	EST. TOP
12 3/4"	9 5/8"	36.0 #	350'	195	SURFACE
8 3/4"	7"	23.0 #	3600'	740	SURFACE

ENERGY DEVELOPMENT CORPORATION PROPOSES TO DRILL A VERTICAL PILOT HOLE TO A DEPTH OF APPROXIMATELY 5300' TVD. THE MANCOS 'B', 'C', AND SEMILLA INTERVALS WILL BE CORED FOR EVALUATION. FOLLOWING THE EVALUATION, A CEMENT PLUG WILL BE PLACED IN THE OPEN HOLE SECTION AND DRESSED OFF AT 3785'. THE VERTICAL SECTION WILL BE KICKED OFF AT THAT POINT. APPROXIMATELY 2196' OF HORIZONTAL HOLE WILL BE DRILLED IN THE DIRECTION OF N39.2° W.

IN ABOVE SPACE DESCRIBE PROPOSED PROGRAM: IF PROPOSAL IS TO DEEPEN OR PLUG BACK, GIVE DATA ON PRESENT PRODUCTIVE ZONE AND PROPOSED NEW PRODUCTIVE ZONE. GIVE BLOWOUT PREVENTER PROGRAM, IF ANY.

I hereby certify that the information above is true and complete to the best of my knowledge and belief.

SIGNATURE

TITLE

SUPR & ENV AFFAIRS

DATE 7/8/93

(113)

TYPE OR PRINT NAME

HARK S. GERDING

TELEPHONE NO. 750-7536

(This space for State Use)

APPROVED BY

TITLE

DATE

CONDITIONS OF APPROVAL, IF ANY:

32

33

PROPOSED 480 DRLG. BLK.
E1/2 SEC. 32. 21N-2W
NE1/4 SEC. 5. 20N-2W

EDC
SAN ISIDRO 5-2
X = 725761.6'
Y = 1820971.6'
LAT. 36° 0' 8"
LON. 107° 4' 12"

PDR

1975'

1200'

6

5

4

X = 727286'
Y = 1819309'
LAT. 35° 59' 32"
LON. 107° 3' 54"

SL

1750'

VETERAN EXPL
JOHNSON
5-14

TA

3770 MD

SL

GARY & WILLIAMS OIL

16

4996 MD

ENERGY DEVELOPMENT CORPORATION

EDC - SAN ISIDRO
WELL NO. 5-2

SANDOVAL CO. NEW MEXICO

Submit to Appropriate
District Office
State Lease - 4 copies
Fee Lease - 3 copies

State of New Mexico
Energy, Minerals and Natural Resources Department

Form C-102
Revised 1-1-89

OIL CONSERVATION DIVISION

P.O. Box 2088
Santa Fe, New Mexico 87504-2088

DISTRICT I

P.O. Box 1980, Hobbs, NM 88240

DISTRICT II

P.O. Drawer DD, Artesia, NM 88210.

DISTRICT III

1000 Rio Brazos Rd., Aztec, NM 87410

WELL LOCATION AND ACREAGE DEDICATION PLAT

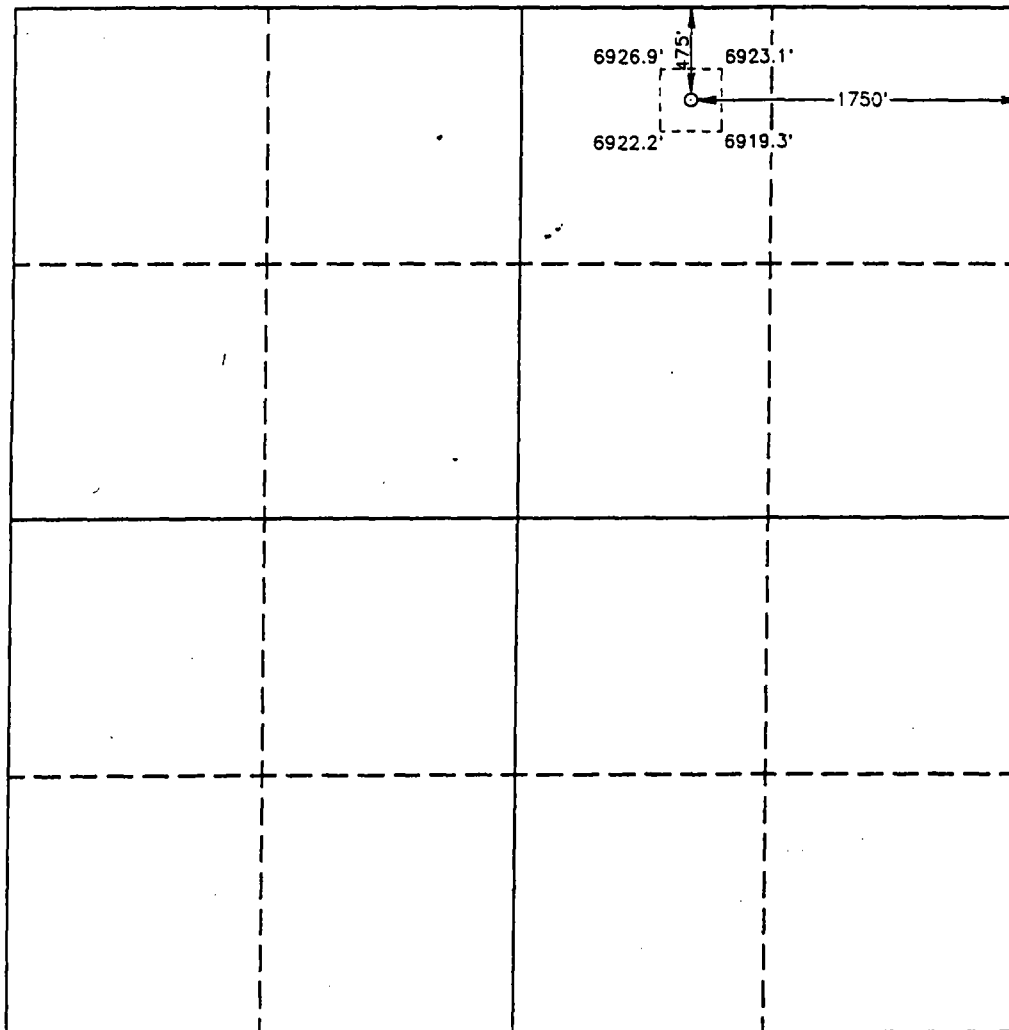
All Distances must be from the outer boundaries of the section

Operator ENERGY DEVELOPMENT CORPORATION			Lease SAN ISIDRO 5		Well No. 2
Unit Letter B	Section 5	Township 20 NORTH	Range 2 WEST	NMPM	County SANDOVAL
Actual Footage Location of Well: 475 feet from the NORTH line and 1750 feet from the EAST line					
Ground Level Elev. 6923.1'	Producing Formation MALCOS	Pool RIO PUERCO		Dedicated Acreage: 480 Acres	

1. Outline the acreage dedicated to the subject well by colored pencil or hatchure marks on the plat below.
2. If more than one lease is dedicated to the well, outline each and identify the ownership thereof (both as to working interest and royalty).
3. If more than one lease of different ownership is dedicated to the well, have the interest of all owners been consolidated by communitization, unitization, force-pooling, etc.?
☐ Yes ☐ No If answer is "yes" type of consolidation _____

If answer is "no" list of owners and tract descriptions which have actually been consolidated. (Use reverse side of this form necessary.)

No allowable will be assigned to the well unit all interests have been consolidated (by communitization, unitization, forced-pooling, otherwise) or until a non-standard unit, eliminating such interest, has been approved by the Division.



OPERATOR CERTIFICATION

I hereby certify the the information contained herein is true and complete to the best of my knowledge and belief.

Signature
MARK S. BERONAL
Printed Name
SUP REG & ENV AFFAIRS
Position
ENERGY DEVELOPMENT CORP
Company
7/8/93
Date

SURVEYOR CERTIFICATION

I hereby certify that the well location shown on this plat was plotted from field notes of actual surveys made by me or under my supervision, and that the same is true and correct to the best of my knowledge and belief.

Date Surveyed
APRIL 2, 1993

Signature & Seal of
Professional Surveyor

Certificate No. **JOHN W. WEST, 676**
RONALD J. JOHNSON, 3239
GARY L. JONES, 7927
63-71-2850

Received _____

Release Date _____

April 10, 1990

Energy Development Corporation
1000 Louisiana
Suite 2900

Houston, Texas 77002

Attention: Mark Blumenshine

Administrative Order NSL- _____

Gentlemen

Dear _____:

Reference is made to your application dated July 9, 1993 ~~October 4, 1990~~ for a non-standard oil well location for your San Andres 5 Well No. 2 to be located 475 feet from the N line and 1750 feet from the E line (Unit B) of Section 5, Township 20 N, Range 2 W, NMPM, Rio Puerco - Mancos Pool, Sandoval County, New Mexico. The NE 1/4 of said Section 5 shall be dedicated to the well forming a standard _____-acre _____ spacing and proration unit.

Order No. R-9330

By the authority granted me under the provisions of ~~General Rule 104 (H)~~ the above-described unorthodox location is hereby approved.

Sincerely, And the E/2 of Section 32, T21N, R2W, NMPM

William J. LeMay
Director

WJL/MES/ag

cc: Oil Conservation Division - _____

CASE NO. 9570
Order No. R-8848
Page -7-

(12) All proceeds from production from the subject well which are not disbursed for any reason shall immediately be placed in escrow in Lea County, New Mexico, to be paid to the true owner thereof upon demand and proof of ownership; the operator shall notify the Division of the name and address of said escrow agent within 30 days from the date of first deposit with said escrow agent.

(13) Should all parties to this forced pooling order reach voluntary agreement subsequent to entry of this order, this order shall thereafter be of no further effect.

(14) The operator of the well and unit shall notify the Director of the Division in writing of the subsequent voluntary agreement of all parties subject to the forced pooling provisions of this order.

(15) Jurisdiction of this cause is retained for the entry of such further orders as the Division may deem necessary.

DONE at Santa Fe, New Mexico, on the day and year hereinabove designated.

STATE OF NEW MEXICO
OIL CONSERVATION DIVISION

Walter J. Lyon
for WILLIAM J. LEMAY
Director

S E A L

CASE NO. 9570
Order No. R-8848
Page -7-

(12) All proceeds from production from the subject well which are not disbursed for any reason shall immediately be placed in escrow in Lea County, New Mexico, to be paid to the true owner thereof upon demand and proof of ownership; the operator shall notify the Division of the name and address of said escrow agent within 30 days from the date of first deposit with said escrow agent.

(13) Should all parties to this forced pooling order reach voluntary agreement subsequent to entry of this order, this order shall thereafter be of no further effect.

(14) The operator of the well and unit shall notify the Director of the Division in writing of the subsequent voluntary agreement of all parties subject to the forced pooling provisions of this order.

(15) Jurisdiction of this cause is retained for the entry of such further orders as the Division may deem necessary.

DONE at Santa Fe, New Mexico, on the day and year hereinabove designated.

STATE OF NEW MEXICO
OIL CONSERVATION DIVISION

Walter J. Lyon
for WILLIAM J. LEMAY
Director

S E A L

Administrative Order NSP-_____

Dear _____:

Reference is made to your application of _____ for a
_____-acre non-standard _____ proration unit consisting
of the following acreage in the _____ Pool:

_____, NEW MEXICO
TOWNSHIP _____, RANGE _____, NMPM
Section _____:

It is my understanding that this unit is to be dedicated to your _____ to be
drilled at a _____ well location _____ feet from the
_____ line and _____ feet from the
_____ line (Unit _____) of said Section
_____.

By authority granted me under the provisions of _____, the above non-
standard _____ proration unit is hereby approved.

Sincerely,

William J. LeMay
Director

WJL/MES/ag

cc: Oil Conservation Division - _____

OIL AND GAS PRODUCERS

FIELD & RESERVOIR	COUNTY	Number of		APPROXIMATE MONTHLY PRODUCTION - NEW MEXICO	
		Wells	Leases	Oil-Bbls.	Gas-MCF
MERRION OIL & GAS CORP.					
FARMINGTON, NM 87499, Box 840, 610 Reilly Ave.; 505 327-9801; Fax 505 326-5900; Pres. J. Greg Merrion; V. Pres. T. Greg Merrion; Opns. Mgr. Steven S. Dunn; Engr. George F. Sharpe; Geol. Doug Endsley; Ldmn. Pat Hegarty; Sr. Acct. Paul Long.					
NW Oil					
Arena Blanca-Entrada	McKinley	1	1	5	—
Bisti-Lower Gallup	San Juan	1	1	28	155
Counselors Gallup-Dakota	Rio Arriba	14	14	517	6,040
Devil's Fork-Gallup					
Associated	Rio Arriba	79	27	5,465	69,111
Devil's Fork-Mesaverde	Rio Arriba	10	7	1,486	2,862
Dufer's Point-Gallup-Dakota	San Juan	20	16	2,328	50,812
Eagle Mesa-Entrada	Sandoval	4	4	48	—
Escrito-Gallup Associated	Rio Arriba, San Juan	1	1	167	970
Gallegos-Gallup Associated	San Juan	20	13	1,127	20,155
Gavilan-Mancos	Rio Arriba	2	2	9	908
Lindrith, South-Gallup-Dakota	Rio Arriba	5	1	467	2,367
Lindrith, West-Gallup-Dakota	Rio Arriba	7	1	382	3,647
Media-Entrada	Sandoval	6	1	745	—
Ojito, Northeast-Gallup-Dakota	Rio Arriba	2	2	26	1,438
Otero-Gallup	Rio Arriba	1	1	—	—
Papers Wash-Entrada	McKinley	4	2	3,905	—
Pot Mesa-Mesaverde	McKinley	5	3	430	12,788
Snake Eyes-Entrada	San Juan	2	1	893	—
Undesignated-Dakota	Sandoval	1	1	5	81
Undesignated-Gallup	Rio Arriba	1	1	34	44
Undesignated-Gallup	Sandoval	3	3	58	852
Undesignated-Mesaverde	Rio Arriba	1	1	46	318
Undesignated-Mesaverde	Sandoval	1	1	5	37
NW Gas					
Ballard-Pictured Cliffs	San Juan, Sandoval, Rio Arriba	10	6	—	6,746
Barker Creek-Paradox	San Juan	1	1	—	—
Basin-Dakota	Rio Arriba, San Juan, Sandoval	14	7	266	17,296
Blanco-Mesaverde	Rio Arriba, San Juan	2	1	—	313
Blanco, South-Pictured Cliffs	Rio Arriba, Sandoval, San Juan	11	5	—	737
Flora Vista-Mesaverde	San Juan	4	4	—	—
Gavilan-Pictured Cliffs	Rio Arriba	1	1	—	282
Kutz, West-Pictured Cliffs	San Juan	3	3	—	16
Otero-Chacra	Rio Arriba, San Juan	4	3	—	7,575
WAW Fruitland-Pictured Cliffs	San Juan	50	16	—	5,266
Undesignated-Chacra	Sandoval	2	1	—	6
MESA OIL COMPANY					
HOBBS, NM 88241, Box 755; 505 393-2727.					
SE Oil					
Jalmat Tansill-Yates-Seven Rivers	Lea	1	1	10	371
MESA OPERATING LIMITED PARTNERSHIP NW					
AMARILLO, TX 79189-2009, Box 2009, One Mesa Square; 806 378-1000.					
OPERATIONS DIVISION:					
ROSWELL, NM 88202-2486, Box 2486; 505 622-0992; PERMIAN EAST/WEST AREA.					
FLORA VISTA, NM 87415, Box 579; 505 327-6174; SAN JUAN AREA.					
NW Oil					
Kutz-Gallup	San Juan	1	1	118	87
NW Gas					
Animas-Chacra	San Juan	1	1	—	5,133
Aztec-Fruitland	San Juan	1	1	—	730