



STATE OF NEW MEXICO  
ENERGY, MINERALS AND NATURAL RESOURCES DEPARTMENT

OIL CONSERVATION DIVISION

2040 S. PACHECO  
SANTA FE, NEW MEXICO 87505  
(505) 827-7131

September 3, 1996

Amoco Production Company  
P. O. Box 606  
Clayton, New Mexico 88415  
Attention: Bill Prichard

Administrative Order TX-249

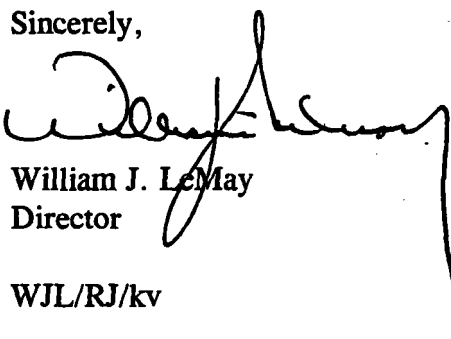
Dear Mr. Prichard:

Reference is made to your request for an exception to the tubing setting requirements as contained in Division Rule 107 (j) (3) for the below-named well.

Pursuant to the authority granted me by Rule 107 (d) (4), you are hereby authorized to have tubingless completions in the wells referenced in Exhibit "A" attached to this order.

The Division reserves the right to rescind this authority in the event that waste appears to be resulting therefrom.

Sincerely,

  
William J. LeMay  
Director

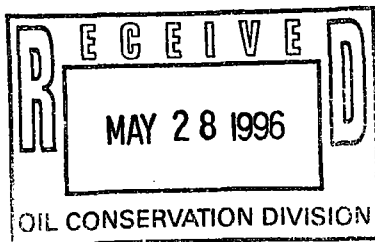
WJL/RJ/kv

cc: Oil Conservation Division - Santa Fe

7VZV2005631671

**EXHIBIT "A"**  
**AMOCO PRODUCTION COMPANY**  
**ADMINISTRATIVE ORDER TX-249**

<b>WELL NAME &amp; NO.</b>	<b>API NO.</b>	<b>LOCATION</b>	<b>COUNTY</b>
<b>BDCDGU 2134 - 132</b>	<b>30-059-20349</b>	<b>P-13-21N-34E</b>	<b>UNION</b>
<b>BDCDGU 2134 - 133</b>	<b>30-059-20360</b>	<b>M-13-21N-34E</b>	<b>UNION</b>
<b>BDCDGU 2134 - 242</b>	<b>30-059-20350</b>	<b>P-24-21N-34E</b>	<b>UNION</b>
<b>BDCDGU 2134 - 243</b>	<b>30-059-20361</b>	<b>M-24-21N-34E</b>	<b>UNION</b>



Amoco Production Company  
PO Box 606  
Clayton, NM 88415

May 15, 1996

Roy . Johnson  
State of New Mexico  
Energy and Minerals Department  
Oil Conservation Division  
2040 S. Pacheco  
Santa Fe, NM 87505

File: BEP-986.51XWF

Dear Mr. Johnson:

Exception to Statewide Rule 107(J)  
Bravo Dome Carbon Dioxide Gas Unit  
Well No: 2134-133M; 2134-132P; 2134-242P; 2134-243M.

Union County, New Mexico

Amoco Production Company requests an exception to Rule 107(J), by drilling and equipping with 5.5" fiberglass production casing in the following Bravo Dome Carbon Dioxide Gas Unit Well Numbers: 2134-133M; 2134-132P; 2134-242P; 2134-243M.

In support of our request, the following reasons exist

1. Increased production rates through the larger inside diameter fiberglass casing.
2. Eliminate casing corrosion.
3. Eliminate expense of packer and tubing.
- 4 The wells are not wildcats or dual completion's, and are completed with a total depth of less than 5000 feet.

A well bore schematic is attached for your information and review.

Your administrative approval of this request will be appreciated. If additional information is desired, please contact me at (505)374-3053.

Yours very truly,

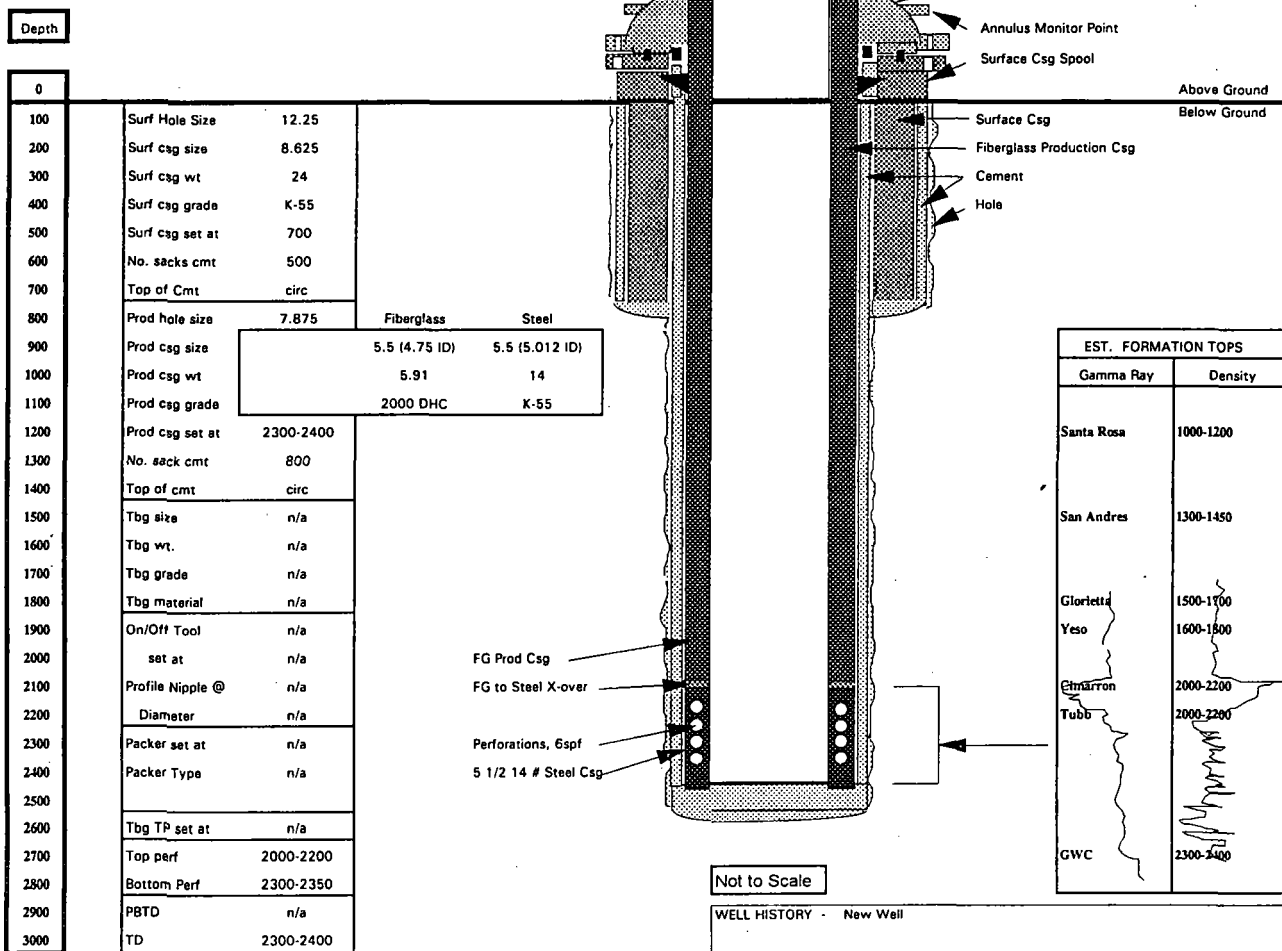
Billy E. Prichard  
Field Foreman

Attachments

# AMOCO - Bravo Dome CO2 Gas Unit

Well No.	TYPICAL WELL RTU No. 5xxx		
County, State	Union, Quay, Harding Co., NM		
Completed	1996		
Location	All 1996 Infill Wells		
Elevation	GL	4700-4800	KB approx 11'

This is a typical well completion for the 22 well development drilling project for 1996.  
 The completion will be tubingless.  
 5.5" Fiberglass Casing will be run from surface to the top of the Tubb Formation.  
 5.5" Steel casing will be set through the Tubb Formation to 20 feet above the GWC.  
 The Steel casing will be perforated at 6 SPF.



Perforations Detail - Planned at 6 shot per foot

## Reservoir Data

height - h, ft	n/a	res.press Pr,psig	n/a
net pay, ft	n/a	skin, s	n/a
perm - k, md	n/a	frac	n/a