



NEW MEXICO ENERGY, MINERALS
& NATURAL RESOURCES DEPARTMENT

OIL CONSERVATION DIVISION
2040 South Pacheco Street
Santa Fe, New Mexico 87505
(505) 827-7131

November 10, 1998

Amoco Production Company
P. O. Box 303
Amistad, New Mexico 88410
Attention: Danny Holcomb

Administrative Order TX-285

Dear Mr. Holcomb:

Reference is made to your request for an exception to the tubing setting requirements as contained in Division Rule 107 (d) (3) for the below-named wells.

Pursuant to the authority granted me by Rule 107 (d) (4), you are hereby authorized to make tubingless completions in the following wells:

Well Name, Number and Location:

BDCDGU 1935 Well No. 272E, API No. 30-059-20375, Unit E, Section 27, Township 19 North, Range 35 East, NMPM, Union County, New Mexico.

BDCDGU 1935 Well No. 282E, API No. 30-059-20376, Unit E, Section 28 Township 19 North, Range 35 East, NMPM, Union County, New Mexico.

BDCDGU 1935 Well No. 292E, API No. 30-059-20377, Unit E, Section 29, Township 19 North, Range 35 East, NMPM, Union County, New Mexico.

The Division reserves the right to rescind this authority in the event that waste appears to be resulting therefrom.

Sincerely,

A handwritten signature in cursive script, appearing to read "Lori Wrotenbery".

Lori Wrotenbery
Director

LW/RJ/kv

cc: Oil Conservation Division - Santa Fe

P 12V2005731654



February 11, 1998

Roy Johnson
State of New Mexico
Energy and Minerals Department
Oil Conservation Division
2040 South Pacheco
Santa Fe, NM 87505

Amoco Production Company
P. O. Box 303
Amistad, NM 88410

File: DJH-400.1-19

Dear Mr. Johnson

Exception to Statewide Rule 107(j)
Bravo Dome Carbon Dioxide Gas Unit
Well No. 1935-272E, 1935-282E, 1935-292E
Union County, New Mexico

Amoco Exploration and Production Company requests an exception to Rule 107(j) in order to drill and complete Bravo Dome Carbon Dioxide Gas Unit Well Numbers 1935-272E, 1935-282E, 1935-292E.

Amoco will run 5 1/2" fiberglass production casing and will produce these wells through the casing in lieu of producing through tubing. In support of our request, the following reasons exist.

1. Eliminate casing corrosion.
2. Eliminate expense for tubing, packer, on/off tool, and inhibited fluid.
3. Increase production rates since the wells can flow up the larger ID casing.
4. These wells are not wildcats or dual completions, and will be completed with a total depth of less than 5000 feet.

Wellbore schematics are attached for your information and review.

Your administrative approval of this request will be appreciated. If additional information is desired, please contact me at (505)374-3010.

Yours very truly,

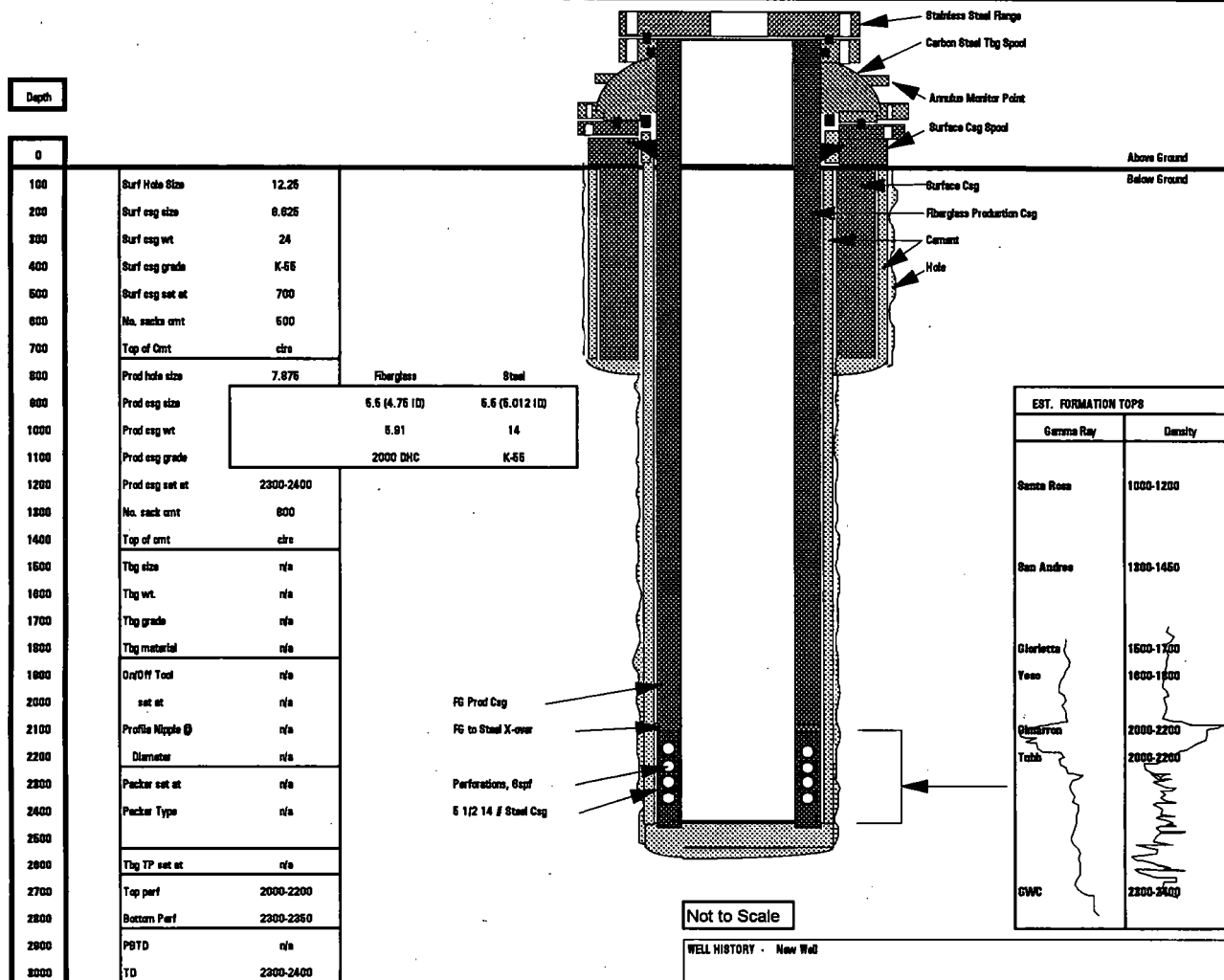
Danny J. Holcomb
Operations Foreman

Attachment

AMOCO - Bravo Dome CO2 Gas Unit

Well No.	TYPICAL WELL RTU No. 5xxx		
County, State	Union Co., NM		
Completed	1998		
Location	1935-272e 1935-282e 1935-292e		
Elevation	GL	4700-4800	KB approx 6'

This is a typical well completion for 3 of the 13 well development drilling project for 1998.
 The completion will be tubingless.
 5.5" Fiberglass Casing will be run from surface to the top of the Tubb Formation.
 5.5" Steel casing will be set through the Tubb Formation to 20 feet above the GWC.
 The Steel casing will be perforated at 6 SPF.



EST. FORMATION TOPS	
Gamma Ray	Density
Santa Rosa	1000-1200
San Andres	1300-1450
Glorietta	1500-1700
Yess	1800-1900
Chisleron	2000-2200
Tubb	2300-2400
GWC	2300-2400

Not to Scale

WELL HISTORY - New Well

Reservoir Data

height - h, ft	n/a	res.press Pr,psig	n/a
net pay, ft	n/a	skdn, s	n/a
perm - k, md	n/a	frac	n/a