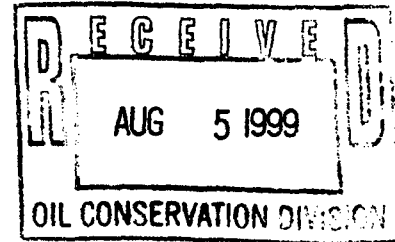




Texaco E & P

August 2, 1999

205 E. Bender Blvd.  
Hobbs NM 88240  
505 393 7191



Texaco Exploration and Production  
205 E Bender  
Hobbs, NM 88240

Re: Simultaneous Dedication of Justis Glorieta and  
Downhole Commingling of Justis Glorieta (Prorated Gas Pool) with Justis  
Blinebry and Justis Tubb-Drinkard Pool ( Oil Pool) for the  
G.L.Erwin B Fed NCT-2 #9  
Unit Letter P, Section 35, Township 24S, Range 37 E  
Lea County, NM

Gentlemen:

In the original request by Texaco Exploration and Production Inc. (March 23, 1999) for administrative approval for simultaneous acreage dedication and downhole commingling for the G.L. Erwin "B" Fed NCT-2 #9, it was incorrectly stated that the proration unit size was 320 acres. The proration unit size is 160 acres. This completion will place the subject well into a 160 acre proration unit to be shared with the G.L. Erwin "B" NCT-2 #2 (Justis Glorieta gas producer 1980' FSL and 1980' FEL). The proration unit consists of the SE/4 of Section 35.

Could you please amend the SD 99-6 and DHC 2325 to reflect the correct proration unit size of 160 acres?

Thank you in advance for your help in correcting this error.

If you have any question concerning this matter please contact Denise Leake at (505) 397- 0405 or myself at (505) 397-0425. Thank you in advance for your attention to this matter.

Sincerely,

Denise Wann  
Production Engineer  
Hobbs Operating Unit

DISTRICT I  
P.O. Box 1980, Hobbs, NM 88241-1980

State of New Mexico  
Energy, Minerals and Natural Resources Department

Form C-102

DISTRICT II  
P.O. Box Drawer DD, Artesia, NM 88211-0719

OIL CONSERVATION DIVISION

Revised February 10, 1994  
Instructions on back  
Submit to Appropriate District Office  
State Lease - 4 Copies  
Fee Lease - 3 Copies

DISTRICT III  
1000 Rio Brazos Rd., Aztec, NM 87410

P.O. Box 2088  
Santa Fe, New Mexico 87504-2088

DISTRICT IV  
P.O. Box 2088, Santa Fe, NM 87504-2088

☐ AMENDED REPORT

WELL LOCATION AND ACREAGE DEDICATION PLAT

<sup>1</sup> API Number 30-025-33384	<sup>2</sup> Pool Code 34200	<sup>3</sup> Pool Name JUSTIS BLINEBRY
<sup>4</sup> Property Code 10931	<sup>5</sup> Property Name ERWIN, G.L. 'B' FEDERAL NCT-2	<sup>6</sup> Well No. 9
<sup>7</sup> OGRID Number 022351	<sup>8</sup> Operator Name TEXACO EXPLORATION & PRODUCTION INC.	<sup>9</sup> Elevation

<sup>10</sup> Surface Location

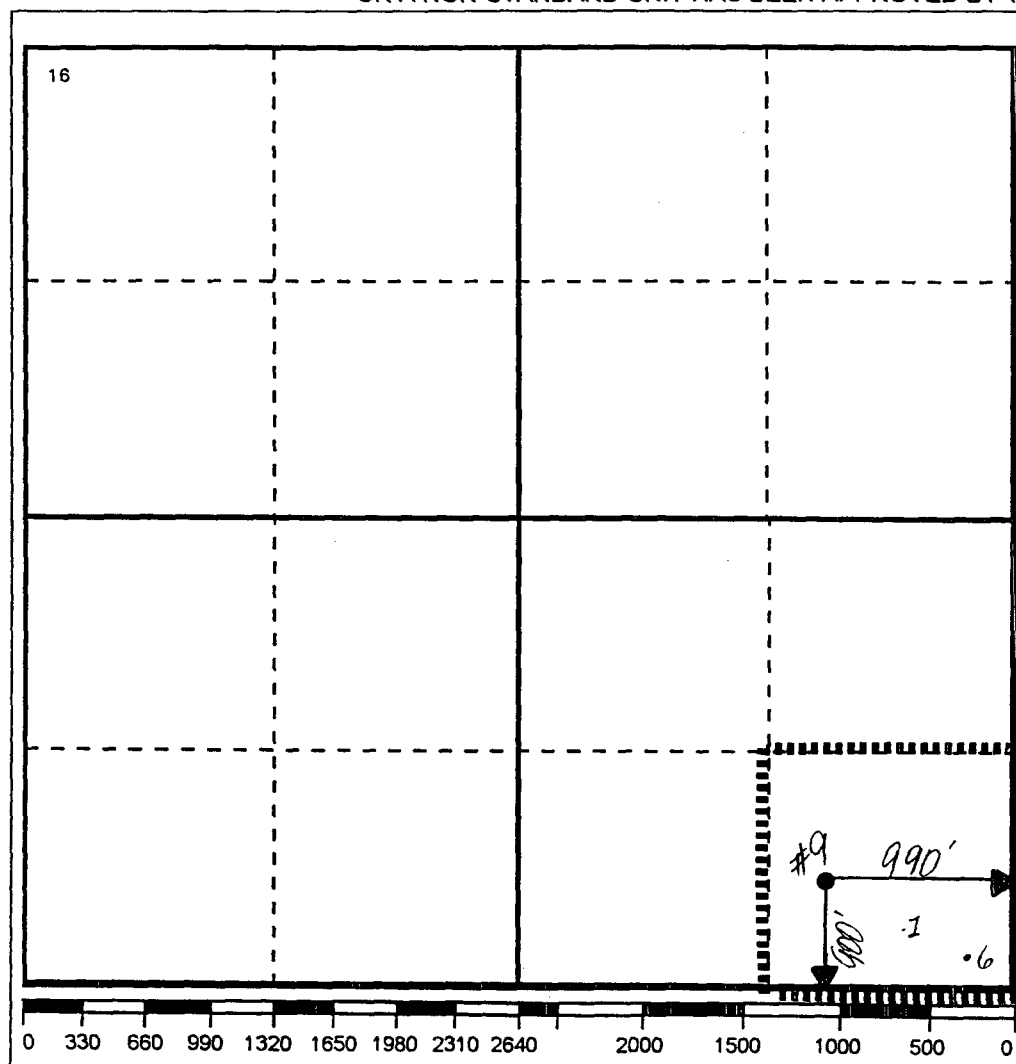
UI or lot no.	Section	Township	Range	Lot.Idn	Feet From The	North/South Line	Feet From The	East/West Line	County
P	35	24-S	37-E		900	SOUTH	990	EAST	LEA

<sup>11</sup> Bottom Hole Location If Different From Surface

UI or lot no.	Section	Township	Range	Lot.Idn	Feet From The	North/South Line	Feet From The	East/West Line	County

<sup>12</sup> Dedicated Acres 40	<sup>13</sup> Joint or Infill No	<sup>14</sup> Consolidation Code	<sup>15</sup> Order No.
-------------------------------------	-------------------------------------	----------------------------------	-------------------------

NO ALLOWABLE WILL BE ASSIGNED TO THIS COMPLETION UNTIL ALL INTERESTS HAVE BEEN CONSOLIDATED  
OR A NON-STANDARD UNIT HAS BEEN APPROVED BY THE DIVISION



17 OPERATOR CERTIFICATION

I hereby certify that the information  
contained herein is true and complete to the  
best of my knowledge and belief

Signature

*J. Denise Leake*

Printed Name

J. Denise Leake

Position

Engineering Assistant

Date

8/2/99

18 SURVEYOR CERTIFICATION

I hereby certify that the well location shown  
on this plat was plotted from field notes of  
actual surveys made by me or under my  
supervision, and that the same is true and  
correct to the best of my knowledge and  
belief.

Date Surveyed

Signature & Seal of  
Professional Surveyor

Certificate No.

## DISTRICT I

P.O. Box 1980, Hobbs, NM 88241-1980

## DISTRICT II

P.O. Box Drawer DD, Artesia, NM 88211-0719

## DISTRICT III

1000 Rio Brazos Rd., Aztec, NM 87410

## DISTRICT IV

P.O. Box 2088, Santa Fe, NM 87504-2088

## State of New Mexico

Energy, Minerals and Natural Resources Department

## OIL CONSERVATION DIVISION

P.O. Box 2088

Santa Fe, New Mexico 87504-2088

Form C-102

Revised February 10, 1994

Instructions on back

Submit to Appropriate District Office

State Lease - 4 Copies

Fee Lease - 3 Copies

☐ AMENDED REPORT

## WELL LOCATION AND ACREAGE DEDICATION PLAT

<sup>1</sup> API Number 30-025-33384	<sup>2</sup> Pool Code 35280	<sup>3</sup> Pool Name JUSTIS TUBB DRINKARD
<sup>4</sup> Property Code 10931	<sup>5</sup> Property Name ERWIN, G.L. 'B' FEDERAL NCT-2	
<sup>7</sup> OGRID Number 022351	<sup>8</sup> Operator Name TEXACO EXPLORATION & PRODUCTION INC.	<sup>6</sup> Well No. 9 <sup>9</sup> Elevation

<sup>10</sup> Surface Location

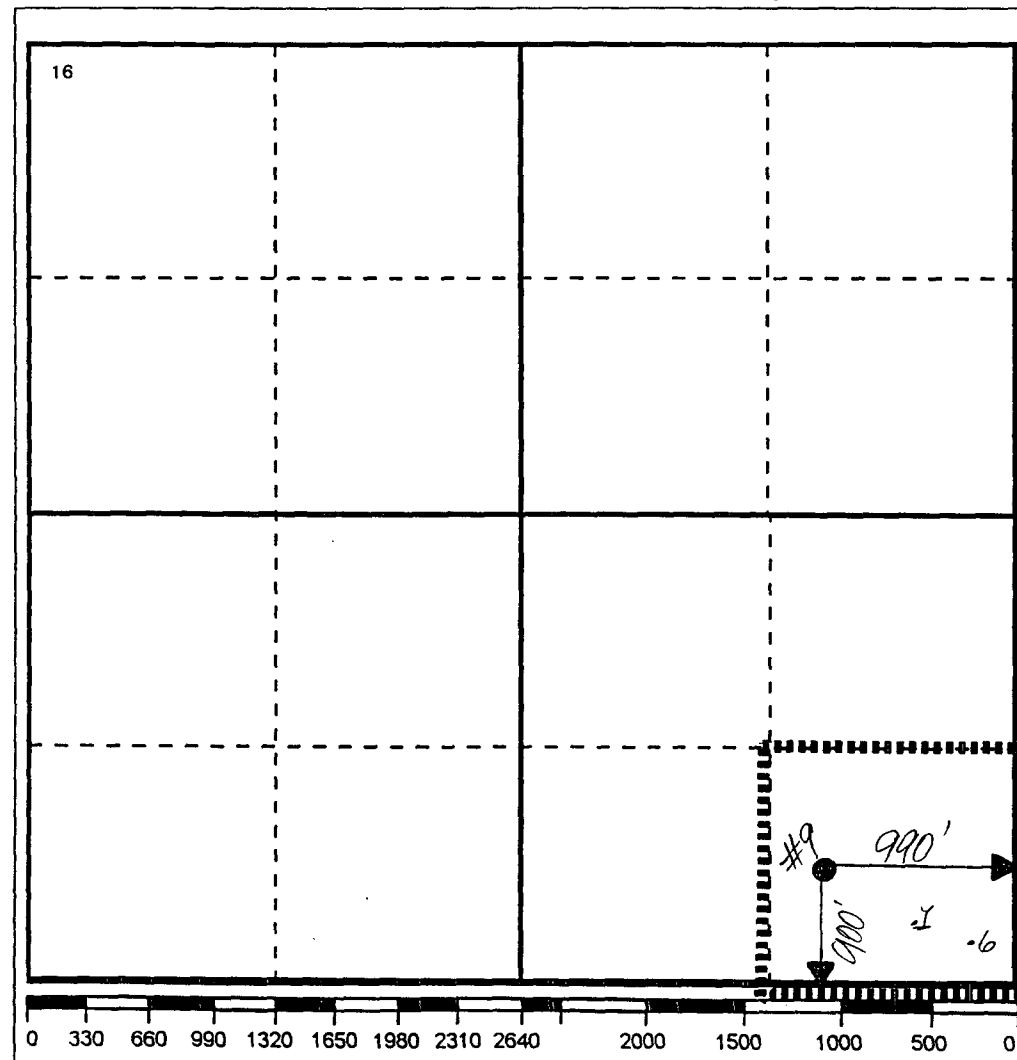
UI or lot no.	Section	Township	Range	Lot.Idn	Feet From The	North/South Line	Feet From The	East/West Line	County
P	35	24-S	37-E		900	SOUTH	990	EAST	LEA

<sup>11</sup> Bottom Hole Location If Different From Surface

UI or lot no.	Section	Township	Range	Lot.Idn	Feet From The	North/South Line	Feet From The	East/West Line	County

<sup>12</sup> Dedicated Acres 40	<sup>13</sup> Joint or Infill No	<sup>14</sup> Consolidation Code	<sup>15</sup> Order No.
-------------------------------------	-------------------------------------	----------------------------------	-------------------------

NO ALLOWABLE WILL BE ASSIGNED TO THIS COMPLETION UNTIL ALL INTERESTS HAVE BEEN CONSOLIDATED  
OR A NON-STANDARD UNIT HAS BEEN APPROVED BY THE DIVISION



## 17 OPERATOR CERTIFICATION

I hereby certify that the information contained herein is true and complete to the best of my knowledge and belief

Signature

*J. Denise Leake*

Printed Name

J. Denise Leake

Position

Engineering Assistant

Date

8/2/99

## 18 SURVEYOR CERTIFICATION

I hereby certify that the well location shown on this plat was plotted from field notes of actual surveys made by me or under my supervision, and that the same is true and correct to the best of my knowledge and belief.

Date Surveyed

Signature & Seal of  
Professional Surveyor

Certificate No.

## DISTRICT I

P.O. Box 1980, Hobbs, NM 88241-1980

## DISTRICT II

P.O. Box Drawer DD, Artesia, NM 88211-0719

## DISTRICT III

1000 Rio Brazos Rd., Aztec, NM 87410

## DISTRICT IV

P.O. Box 2088, Santa Fe, NM 87504-2088

State of New Mexico

Energy, Minerals and Natural Resources Department

Form C-102

Revised February 10, 1994

Instructions on back

Submit to Appropriate District Office

State Lease - 4 Copies

Fee Lease - 3 Copies

☐ AMENDED REPORT

## OIL CONSERVATION DIVISION

P.O. Box 2088

Santa Fe, New Mexico 87504-2088

## WELL LOCATION AND ACREAGE DEDICATION PLAT

<sup>1</sup> API Number 30-025-33384	<sup>2</sup> Pool Code 79360	<sup>3</sup> Pool Name JUSTIS GLORIETA (PRO GAS)
<sup>4</sup> Property Code 10931	<sup>5</sup> Property Name ERWIN, G.L. 'B' FEDERAL NCT-2	<sup>6</sup> Well No. 9
<sup>7</sup> OGRID Number 022351	<sup>8</sup> Operator Name TEXACO EXPLORATION & PRODUCTION INC.	<sup>9</sup> Elevation

<sup>10</sup> Surface Location

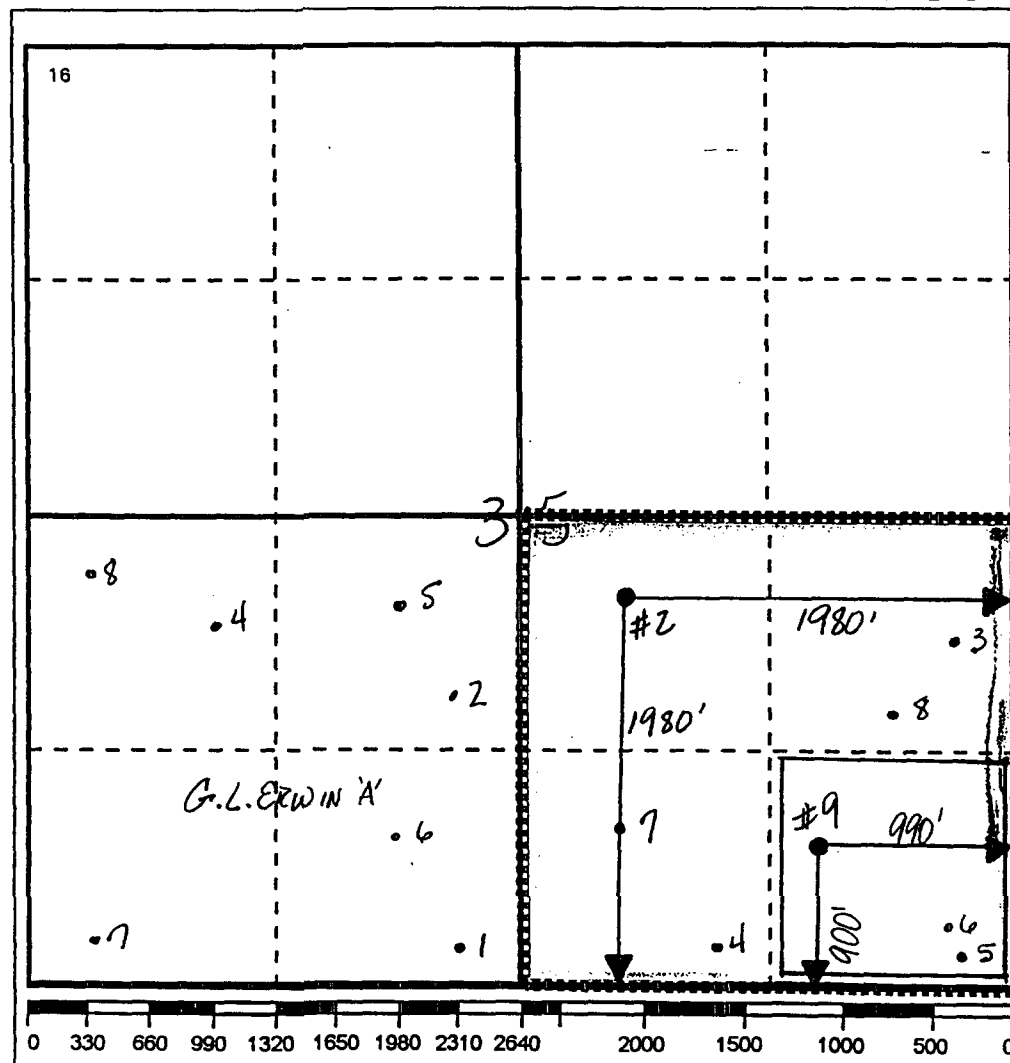
Ul or lot no.	Section	Township	Range	Lot.Idn	Feet From The	North/South Line	Feet From The	East/West Line	County
P	35	24-S	37-E		900	SOUTH	990	EAST	LEA

<sup>11</sup> Bottom Hole Location If Different From Surface

Ul or lot no.	Section	Township	Range	Lot.Idn	Feet From The	North/South Line	Feet From The	East/West Line	County

<sup>12</sup> Dedicated Acres 160	<sup>13</sup> Joint or Infill No	<sup>14</sup> Consolidation Code	<sup>15</sup> Order No.
--------------------------------------	-------------------------------------	----------------------------------	-------------------------

NO ALLOWABLE WILL BE ASSIGNED TO THIS COMPLETION UNTIL ALL INTERESTS HAVE BEEN CONSOLIDATED  
OR A NON-STANDARD UNIT HAS BEEN APPROVED BY THE DIVISION



## 17 OPERATOR CERTIFICATION

I hereby certify that the information  
contained herein is true and complete to the  
best of my knowledge and belief

Signature

*J. Denise Leake*

Printed Name

J. Denise Leake

Position

Engineering Assistant

Date

4/5/99

## 18 SURVEYOR CERTIFICATION

I hereby certify that the well location shown  
on this plat was plotted from field notes of  
actual surveys made by me or under my  
supervision, and that the same is true and  
correct to the best of my knowledge and  
belief.

Date Surveyed

Signature & Seal of  
Professional Surveyor

Certificate No.