

Stogner, Michael, EMNRD

From: John Allred [jallred@plantationpetro.com]
To: Stogner, Michael, EMNRD
Cc:
Subject: FW: Re: Plantation Operating - Drilling List 2006
Attachments:

Sent: Tue 4/25/2006 9:14 AM

-----Original Message-----

From: John Allred [mailto:jallred@plantationpetro.com]
Sent: Monday, April 24, 2006 2:14 PM
To: Donna Mull (dmull@state.nm.us)
Cc: Don Dotson
Subject: Re: Plantation Operating Drilling List 2006

Michael:

Re: Plantation Operating - Drilling List 2006

Here is a list of wells we want to get NMOCD approved & drilled this 2006 year.

The ones in yellow we have mailed to you in Santa Fe, NM.

Please check and see if you have received them and what the status is of them.

Carter Eaves "NCT" A #3
6K-24S-37E

Martin "B" #3
31C-24S-37E

New Mexico "AA" State #7
22B-23S-36E

Boren Greer #4
21E-22S-36E

State E Com #5
16I-21S-36E

State A Com #6
8G-21S-36E

Bois d Arc # 1

Quapaw #2
19J-20S-37E

**Myers B-28 A/C-2 #4
28I-20S-37E**

**Hansen State #10
16A-20S-37E**

**Myers B-27 #2
27C-20S-37E**

**Turner State #4
32B-20S-37E**

**Wulff State #3
17D-20S-37E**

**Wulff State #4
16H-21S-36E**

Stevens B-18 # 1

State E Com # 6

State A Com # 7

Elloitt B-6 # 1

Cypress #1

**State H
17B**

Regards,

John Allred

Plantation Petroleum Companies


2203 Timberloch Place, Suite 229

The Woodlands, Texas 77380



(281) 296-7222 w

(281) 389-8832 m

(281) 298-2333 Fax

 Attachments can contain viruses that may harm your computer. Attachments may not display correctly.

Stogner, Michael, EMNRD

From: Stogner, Michael, EMNRD **Sent:** Fri 4/28/2006 1:51 PM
To: John Allred
Cc:
Subject: RE: Re: Plantation Operating - Drilling List 2006
Attachments:  [SD-04-10.rst.doc\(33KB\)](#)  [SD-EUMT.8.doc\(38KB\)](#)

- (1) **New Mexico "AA" State #7 - 22B-23S-36E**
 Approved by REINSTATED Administrative Order SD-04-10 on 4-28-2006 (see attachment).
- (2) **Hansen State #10 - 16A-20S-37E**
 Approved by Administrative Order SD-06-07 on 4-28-2006 (see attachment).
- (3) **Carter Eaves "NCT" A #3 - 6K-24S-37E**
 Application was received on 3/31/2006 and is pending review.
- (4) **Martin "B" #3 - 31C-24S-37E**
 Application was received on 3/31/2006 and is pending review.
- (5) **State E Com #5 - 16I-21S-36E**
 Application was received on 4/20/2006 and is pending review with a 20-day suspense date of 5/10/2006.
- (6) **State A Com #6 - 8G-21S-36E**
 Application was received on 4/26/2006 and is pending review with a 20-day suspense date of 5/16/2006.
- (7) **Turner State #5 - 32B-20S-37E**
 Application was received on 4/28/2006 and is pending review with a 20-day suspense date of 5/18/2006.

There was nothing marked in yellow. However, I've done an exhaustive search in our office and can't find that we've received any of the other filings you have listed. I'm still looking and will ask around again.

From: John Allred [mailto:jallred@plantationpetro.com]
Sent: Tue 4/25/2006 9:14 AM
To: Stogner, Michael, EMNRD
Subject: FW: Re: Plantation Operating - Drilling List 2006

-----Original Message-----

From: John Allred [mailto:jallred@plantationpetro.com]
Sent: Monday, April 24, 2006 2:14 PM
To: Donna Mull (dmull@state.nm.us)
Cc: Don Dotson
Subject: Re: Plantation Operating Drilling List 2006

Michael:

Re: Plantation Operating - Drilling List 2006

Here is a list of wells we want to get NMOCD approved & drilled this 2006 year.

The ones in yellow we have mailed to you in Santa Fe, NM.

Please check and see if you have received them and what the status is of them.

**Carter Eaves "NCT" A #3
6K-24S-37E**

**Martin "B" #3
31C-24S-37E**

**New Mexico "AA" State #7
22B-23S-36E**

**Boren Greer #4
21E-22S-36E**

**State E Com #5
16I-21S-36E**

**State A Com #6
8G-21S-36E**

Bois d Arc # 1

**Quapaw #2
19J-20S-37E**

**Myers B-28 A/C-2 #4
28I-20S-37E**

**Hansen State #10
16A-20S-37E**

**Myers B-27 #2
27C-20S-37E**

**Turner State #4
32B-20S-37E**

**Wulff State #3
17D-20S-37E**

**Wulff State #4
16H-21S-36E**

Stevens B-18 # 1

State E Com # 6

State A Com # 7

Elloitt B-6 # 1

Cypress #1

**State H
17B**

Regards,

John Allred

Plantation Petroleum Companies


2203 Timberloch Place, Suite 229

The Woodlands, Texas 77380


(281) 296-7222 w

(281) 389-8832 m

(281) 298-2333 Fax

 Attachments can contain viruses that may harm your computer. Attachments may not display correctly.

Stogner, Michael, EMNRD

From: John Allred [jallred@plantationpetro.com] **Sent:** Thu 5/18/2006 4:40 PM
To: Stogner, Michael, EMNRD
Cc: Kim Faldyn; 'Don Dotson'
Subject: Re: Carter Eaves NCT-A # 3 & Martin B # 3 - Offset Notice to Non-Gas Well Offset Operators
Attachments:  [Offset Operators-2.PDF\(840KB\)](#)

Michael:

Re: Carter Eaves NCT-A # 3 &
Martin B # 3
Lea Co, NM
Notice to Non-Gas Well Offset Operators

As per our discussion concerning the above well applications, we are sending notices to those operators who offset us that are not in our Gas Pool.

Please see new attached plats with PU's drawn and numbered as effected.

Good talking with you, I hope this will expedite OCD approval.

Regards,

John Allred
Plantation Petroleum Companies
2203 Timberloch Place, Suite 229
The Woodlands, Texas 77380
(281) 296-7222 w
(281) 389-8832 m
(281) 298-2333 Fax

24S-36E

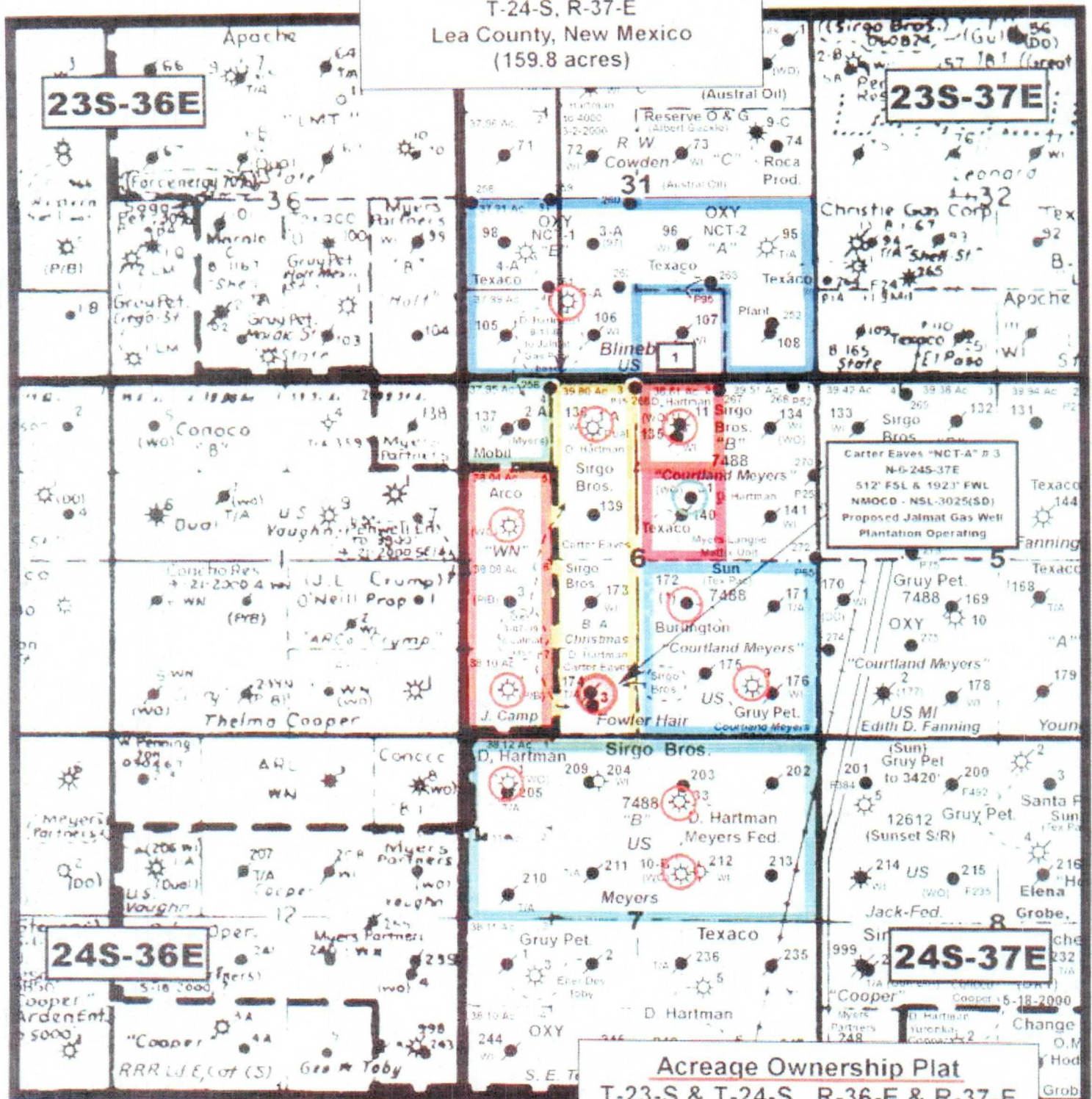
24S-37E

25S-36E

25S-37E

Primary API	Lease Name	Well Num	Operator Name	Sec Suf	Sec	Twp	Rng	Field Name	Status Name	Last Prod Date
1	30025112910001 COOPER JAL UNIT	227	SDG RESOURCES LIMITED PARTNERSHIP		30	24	37	JALMAT	ACTIVE	2006-01
2	30025257900001C D WOOLWORTH	5	ARCH PETROLEUM INCORPORATED		30	24	37	JALMAT	ACTIVE	2005-12
3	30025254640000C D WOOLWORTH	4	ARCH PETROLEUM INCORPORATED		30	24	37	LANGUE MATTIX	ACTIVE	2005-12
4	30025254640001C D WOOLWORTH	4	ARCH PETROLEUM INCORPORATED		30	24	37	JALMAT	ACTIVE	2005-12
5	30025112920001 COOPER JAL UNIT	141	SDG RESOURCES LIMITED PARTNERSHIP		30	24	37	JALMAT	ACTIVE	2006-01
6	30025112910000 COOPER JAL UNIT	227	SDG RESOURCES LIMITED PARTNERSHIP		30	24	37	JALMAT	INACTIVE PRIOR YEAR	1999-04
7	30025112910001 COOPER JAL UNIT	227	SDG RESOURCES LIMITED PARTNERSHIP		30	24	37	JALMAT	ACTIVE	2006-01
8	30025112860000 COOPER JAL UNIT	239	SDG RESOURCES LIMITED PARTNERSHIP		30	24	37	LANGUE MATTIX	ACTIVE	2006-01
9	30025351390001 JACK B 30	3	PLANTATION OPERATING LLC	A	30	24	37	JALMAT	ACTIVE	2005-12
10	30025258710003 JACK B 30	2	PLANTATION OPERATING LLC	B	30	24	37	JALMAT	ACTIVE	2005-12
11	30025258710003 JACK B 30	2	PLANTATION OPERATING LLC	B	30	24	37	LANGUE MATTIX	ACTIVE	2005-12
12	30025329690000 COOPER JAL UNIT	413	SDG RESOURCES LIMITED PARTNERSHIP	C	30	24	37	LANGUE MATTIX	ACTIVE	2006-01
13	30025329690000 COOPER JAL UNIT	413	SDG RESOURCES LIMITED PARTNERSHIP	C	30	24	37	JALMAT	ACTIVE	2006-01
14	30025112900000 COOPER JAL UNIT	228	SDG RESOURCES LIMITED PARTNERSHIP	C	30	24	37	JALMAT	ACTIVE	1971-04
15	30025112920000 COOPER JAL UNIT	141	CHEVRON U S A INCORPORATED	D	30	24	37	LANGUE MATTIX	INACTIVE PRIOR YEAR	1971-06
16	30025112890000 COOPER JAL UNIT	232	SDG RESOURCES LIMITED PARTNERSHIP	F	30	24	37	JALMAT	ACTIVE	2006-01
17	30025112840000 JACK B 30	1	HARTMAN DOYLE	H	30	24	37	JALMAT	INACTIVE PRIOR YEAR	2000-07
18	30025112840000 JACK B 30	1	PLANTATION OPERATING LLC	H	30	24	37	JALMAT	ACTIVE	2005-12
19	30025261000000 GULF EDDIE CORRIGAN	2	GRUY PETROLEUM MANAGEMENT COMPANY	I	30	24	37	LANGUE MATTIX	ACTIVE	2005-12
20	30025287990000C D WOOLWORTH	7	ARCH PETROLEUM INCORPORATED	J	30	24	37	LANGUE MATTIX	ACTIVE	2005-12
21	30025287990000C D WOOLWORTH	7	ARCH PETROLEUM INCORPORATED	J	30	24	37	JALMAT	ACTIVE	2005-12
22	30025338810001C D WOOLWORTH	10	ARCH PETROLEUM INCORPORATED	J	30	24	37	JALMAT	ACTIVE	2005-12
23	30025338810000C D WOOLWORTH	10	ARCH PETROLEUM INCORPORATED	J	30	24	37	LANGUE MATTIX	ACTIVE	2005-12
24	30025112870000C D WOOLWORTH	3	GULF OIL CORPORATION	K	30	24	37	JALMAT	INACTIVE PRIOR YEAR	1978-11
25	30025328620000C D WOOLWORTH	8	ARCH PETROLEUM INCORPORATED	K	30	24	37	JALMAT	ACTIVE	2005-12
26	30025257900000C D WOOLWORTH	5	ARCH PETROLEUM INCORPORATED	M	30	24	37	LANGUE MATTIX	INACTIVE PRIOR YEAR	1993-05
27	30025328630001C D WOOLWORTH	9	ARCH PETROLEUM INCORPORATED	N	30	24	37	JALMAT	ACTIVE	2005-12
28	30025328630000C D WOOLWORTH	9	ARCH PETROLEUM INCORPORATED	N	30	24	37	LANGUE MATTIX	ACTIVE	2005-12
29	30025338820001C D WOOLWORTH	11	ARCH PETROLEUM INCORPORATED	N	30	24	37	JALMAT	ACTIVE	2005-12
30	30025338820000C D WOOLWORTH	11	ARCH PETROLEUM INCORPORATED	N	30	24	37	LANGUE MATTIX	ACTIVE	2005-12
31	30025287310000C D WOOLWORTH	6	ARCH PETROLEUM INCORPORATED	O	30	24	37	JALMAT	ACTIVE	2005-12
32	30025287310001C D WOOLWORTH	6	ARCH PETROLEUM INCORPORATED	O	30	24	37	LANGUE MATTIX	INACTIVE PRIOR YEAR	1996-03
33	30025260660000 GULF EDDIE CORRIGAN	1	GRUY PETROLEUM MANAGEMENT COMPANY	P	30	24	37	LANGUE MATTIX	ACTIVE	2005-10
34										

Plantation Operating LLC
Carter Eaves NCT-A Lease
NW/4 NW/4, E/2 W/2 Section 6
T-24-S, R-37-E
Lea County, New Mexico
(159.8 acres)



Acreage Ownership Plat
T-23-S & T-24-S, R-36-E & R-37-E
Lea County, New Mexico
Scale: 1" = 2000'

Primary API	Lease Name	Well Num	Operator Name	Sec Suf	Sec	Twp	Rng	Field Name	State Name	Last Prod Date
1 30025263140000	MYERS LANGLE MATTHX UNIT	1	OXY USA WTP LP		31	23	37	LANGUE MATTHX	INACTIVE PRIOR YEAR	2001-06
2 30025109003000	MYERS LANGLE MATTHX UNIT	62	OXY USA WTP LP		31	23	37	LANGUE MATTHX	INACTIVE PRIOR YEAR	2006-01
3 30025334300000	E E BLINBRY A FEDERAL NCT-1 COM	4	XTO ENERGY INCORPORATED		31	23	37	JALMAT	ACTIVE	1975-05
4 30025109003000	MYERS LANGLE MATTHX UNIT	71	OXY USA WTP LP		31	23	37	LANGUE MATTHX	ACTIVE	2006-01
5 30025109003000	MYERS LANGLE MATTHX UNIT	40	OXY USA WTP LP		31	23	37	LANGUE MATTHX	ACTIVE	2006-01
6 30025109003000	MYERS LANGLE MATTHX UNIT	106	OXY USA WTP LP		31	23	37	LANGUE MATTHX	ACTIVE	2006-01
7 30025109003000	MYERS LANGLE MATTHX UNIT	261	OXY USA WTP LP		31	23	37	LANGUE MATTHX	ACTIVE	2006-01
8 30025258800000	MYERS LANGLE MATTHX UNIT	258	OXY USA WTP LP		31	23	37	LANGUE MATTHX	ACTIVE	2006-01
9 30025258800000	MYERS LANGLE MATTHX UNIT	159	OXY USA WTP LP		31	23	37	LANGUE MATTHX	ACTIVE	1992-09
10 30025090500000	R W COWDEN	1	WESTERN NATURAL GAS COMPANY	A	31	23	37	LANGUE MATTHX	INACTIVE PRIOR YEAR	1994-06
11 30025259450000	MYERS LANGLE MATTHX UNIT	60	OXY USA WTP LP	B	31	23	37	LANGUE MATTHX	INACTIVE PRIOR YEAR	2006-01
12 30025109003000	R W COWDEN C	4	FLANTATION OPERATING LLC	C	31	23	37	JALMAT	ACTIVE	2001-02
13 30025109003000	R W COWDEN C	4	HARTMAN DOYLE	C	31	23	37	JALMAT	INACTIVE PRIOR YEAR	2001-02
14 30025109003000	R W COWDEN C	4	GAGCKLE ALBERT	C	31	23	37	LANGUE MATTHX	INACTIVE PRIOR YEAR	1990-01
15 30025109003000	MYERS LANGLE MATTHX UNIT	72	OXY USA WTP LP	F	31	23	37	LANGUE MATTHX	ACTIVE	2006-01
16 30025253400000	MYERS LANGLE MATTHX UNIT	259	OXY USA WTP LP	F	31	23	37	LANGUE MATTHX	ACTIVE	1975-05
17 30025109003000	MYERS LANGLE MATTHX UNIT	73	OXY USA WTP LP	G	31	23	37	LANGUE MATTHX	ACTIVE	2006-01
18 30025279180000	R W COWDEN C	9	POCA PRODUCTION INCORPORATED	H	31	23	37	JALMAT	ACTIVE	2006-01
19 30025258770000	MYERS LANGLE MATTHX UNIT	74	OXY USA WTP LP	H	31	23	37	LANGUE MATTHX	ACTIVE	2006-01
20 30025109120000	MYERS LANGLE MATTHX UNIT	95	OXY USA WTP LP	I	31	23	37	LANGUE MATTHX	INACTIVE PRIOR YEAR	1972-04
21 30025109120000	E E BLINBRY A FEDERAL NCT-1 COM CT	2	XTO ENERGY INCORPORATED	I	31	23	37	JALMAT	INACTIVE PRIOR YEAR	1995-09
22 30025109003000	MYERS LANGLE MATTHX UNIT	96	OXY USA WTP LP	J	31	23	37	LANGUE MATTHX	ACTIVE	1994-09
23 30025325550000	MYERS LANGLE MATTHX UNIT	263	OXY USA WTP LP	J	31	23	37	LANGUE MATTHX	ACTIVE	2006-01
24 30025109003000	E E BLINBRY A FEDERAL NCT-1 COM CT	97	XTO ENERGY INCORPORATED	K	31	23	37	JALMAT	INACTIVE PRIOR YEAR	1997-02
25 30025109003000	E E BLINBRY A FEDERAL NCT-1 COM CT	97	XTO ENERGY INCORPORATED	K	31	23	37	LANGUE MATTHX	INACTIVE PRIOR YEAR	1975-11
26 30025325890000	MYERS LANGLE MATTHX UNIT	260	OXY USA WTP LP	K	31	23	37	LANGUE MATTHX	ACTIVE	2006-01
27 30025325900000	MYERS LANGLE MATTHX UNIT	262	OXY USA WTP LP	K	31	23	37	LANGUE MATTHX	ACTIVE	2006-01
28 30025336460000	E E BLINBRY A FEDERAL NCT-1 COM	5	XTO ENERGY INCORPORATED	N	31	23	37	JALMAT	ACTIVE	2006-01
29 30025109110000	MYERS LANGLE MATTHX UNIT	106	OXY USA WTP LP	N	31	23	37	LANGUE MATTHX	INACTIVE PRIOR YEAR	1994-09
30 30025109100000	E E BLINBRY B FEDERAL NCT-1	4	CHEVRON U S A INCORPORATED	O	31	23	37	JALMAT	INACTIVE PRIOR YEAR	1993-04
31 30025109100000	MYERS LANGLE MATTHX UNIT	107	OXY USA WTP LP	O	31	23	37	LANGUE MATTHX	INACTIVE PRIOR YEAR	1994-01
32 30025109130000	MYERS LANGLE MATTHX UNIT	108	TEXACO PRODUCING INCORPORATED	P	31	23	37	LANGUE MATTHX	INACTIVE PRIOR YEAR	1993-04
33 30025289000000	MYERS LANGLE MATTHX UNIT	252	OXY USA WTP LP	P	31	23	37	LANGUE MATTHX	INACTIVE PRIOR YEAR	1994-09
34										

Stogner, Michael, EMNRD

From: John Allred [jallred@plantationpetro.com]
To: Stogner, Michael, EMNRD
Cc: 'Don Dotson'
Subject: Re: Previously NMOCD Drilling Approved Wells
Attachments:

Sent: Thu 5/11/2006 9:16 AM

Michael:

Re: Previously Approved NMOCD Drilling Wells

The last time we E-Mailed/talked was 4/27/06 you sent me a status update below.

We have our dirt contractor building the two approved locations and a drilling rig will be moving in soon. Can you check these two wells below that were previously approved under the previous operator. We would like to continue working with this dirt contractor and not release him.

These were two wells that were pending review:

- (1) Carter Eaves "NCT" A #3 - 6K-24S-37E
Application was received on 3/31/2006 and is pending review.
- (2) Martin "B" #3 - 31C-24S-37E
Application was received on 3/31/2006 and is pending review.

We would like to start building locations if you do not see anything problem with these two wells.

Regards,

John Allred
Plantation Petroleum Companies
2203 Timberloch Place, Suite 229
The Woodlands, Texas 77380
(281) 296-7222 w
(281) 389-8832 m
(281) 298-2333 Fax

*Talked w/ John on
5-18-06 @ 1:15pm
concerning these
two wells and
the hourly check of
notification
to WI.
- Skip*

Kim Faldyn

From: John Allred [jallred@plantationpetro.com]
Sent: Thursday, May 18, 2006 5:41 PM
To: Michael E. Stogner
Cc: Kim Faldyn; 'Don Dotson'
Subject: Re: Carter Eaves NCT-A # 3 & Martin B # 3 - Offset Notice to Non-Gas Well Offset Operators



Offset
Operators-2.PDF

Michael:

Re: Carter Eaves NCT-A # 3 &
Martin B # 3
Lea Co, NM
Notice to Non-Gas Well Offset Operators

As per our discussion concerning the above well applications, we are sending notices to those operators who offset us that are not in our Gas Pool.

Please see new attached plats with PU's drawn and numbered as effected.

Good talking with you, I hope this will expedite OCD approval.

Regards,

John Allred
Plantation Petroleum Companies
2203 Timberloch Place, Suite 229
The Woodlands, Texas 77380
(281) 296-7222 w
(281) 389-8832 m
(281) 298-2333 Fax

2006 MAY 23 PM 1 24

Mr. Stogner -

Here is the notice we sent out to
Non-Gas Well Offset Operators.

Thanks.

Kim Faldyn



PLANTATION PETROLEUM COMPANIES

PLANTATION PETROLEUM HOLDINGS III, LLC; PLANTATION OPERATING, LLC

2203 Timberloch Place, Ste. 229
The Woodlands, TX 77380
Tel: (281) 296-7222
Fax: (281) 298-2333

May 22, 2006

FEDERAL EXPRESS

Michael E. Stogner, Chief Hearing Officer
New Mexico Oil Conservation Division
1220 So. St. Francis Drive
Santa Fe, NM 87505

**RE: Carter-Eaves "NCT-A" No. 3 - Proposed Drilling to Jalamt Gas Pool
E/2 W/2, Unit N, Sec 6, T-24S, R-37E, Lea County, New Mexico
Re-Submitting NMOCD Previously Approved Drilling Location
Approval (Administrative Order No. NSL-3025(SD))
Administrative Application for Simultaneous Dedication,
Non-Standard Location, in Existing Non-Standard Proration Unit
(Administrative Order No. NSP-726)**

2006 MAY 23 PM 1 24

Dear Mr. Stogner,

Please find enclosed is a copy of previously approved Administrative Approval Order No. **NSL-3025 (SD)** dated July 3, 1991, corresponding to the 159.8 acre **Carter-Eaves "NCT-A" No. 3 (N-6-24S-37E)** (Gas) proration unit, consisting of E/2 W/2 Section 6, T-24S, R-37E Lea County, New Mexico, grants approval to simultaneously dedicate two Jalmat wells, to the subject existing 159.8 acre Jalmat (Gas) proration unit. The **Carter-Eaves "NCT-A" No. 1 (C-6-24S-37E)** in the NSP was approved under Administrative Order No. **NSP-726** dated November 10, 1965.

Thus, we hereby propose to **Re-Submit Previous Approval Administrative Order No. NSL-3025 (SD)** for new approval corresponding to the new drilling application for the **Carter-Eaves "NCT-A" No. 3**. Approval of the simultaneous dedication application will prevent waste, by allowing for the optimal recovery of remaining gas reserves while protecting our mineral rights, (including gas reserves from tighter Jalmat strata, within the Jalmat interval).

Also, please find enclosed an original and five copies of a new C-101 and C-102 corresponding to the new drilling application for the **Carter-Eaves "NCT-A" No. 3** along with the C-144 and BOP diagram.

Notice of this administrative application has been sent by mail to the applicable diagonal and adjacent offset Jalmat operators, which are attached.

We thank you for your thoughtful review of this matter as we expect a drilling rig in the next few weeks.

Very truly yours,

PLANTATION OPERATING, LLC



John Allred, P.E.
Engineer

cc:

Chris Williams
District Supervisor – District 1
1625 N. French Drive
Hobbs, New Mexico 88240

Donna Mull
APD Permitting – District 1
1625 N. French Drive
Hobbs, New Mexico 88240

BP America Production Company
P.O. Box 1610
600 N. Marienfeld
Midland, TX 79702

Gruy Petroleum Management Company
600 E. Colinas Blvd., Ste 1100
Irving, TX 75014-0907

XTO Energy Incorporated
200 N. Lorraine, Ste 800
Midland, TX 79701

Oxy USA WTP LP
6 Desta Dr., Ste 6000
Midland, TX 79710

Plantation Operating, LLC
2203 Timberloch Place, Ste 229
The Woodlands, TX 77380

LIST OF OFFSET JALMAT (GAS) OPERATORS

Plantation Operating, LLC
Carter Eaves "NCT-A" # 3

N-6-24S-37E

(E/2 NW/4 Section 6, T-24-S, R-37-E)

Lea County, New Mexico

<u>Operator</u>	<u>Lease and Well Name(s)</u>	<u>Well Locations</u>	<u>PU Description</u>	<u>No. of Acres</u>	<u>Gas/Oil</u>	<u>ACT/INA</u>
Plantation Operating, LLC	Myers "B" Federal # 11	B-6-24S-37E	NW/4 NE/4 Section 6, T-24-S, R-37-E	40	Gas	INA
Plantation Operating, LLC	Myers "B" Federal # 31	G-6-24S-37E	SW/4 NE/4 Section 6, T-24-S, R-37-E	40	Oil	INA
Plantation Operating, LLC	Carter Eaves "NCT-A" # 1	C-6-24S-37E	E/2 NW/4 Section 6, T-24-S, R-37-E	160	Gas	ACT
XTO Energy Incorporated	E. E. Blinebry "A" Federal Com NCT-1 # 5	N-31-24S-37E	S/2 (-SW/4 SE/4) Section 31, T-24-S, R-37-E	355.96	Gas	ACT
Gruy Petroleum Management Company	Courtland Myers # 9	P-6-24S-37E	SE/4 Section 6, T-24-S, R-37-E	160	Gas	ACT
Plantation Operating, LLC	Myers B Federal R/A "B" # 10	G-7-24S-37E	N/2 Section 7, T-24-S, R-37-E	320	Gas	ACT
Plantation Operating, LLC	Myers B Federal R/A "B" # 33	B-7-24S-37E	N/2 Section 7, T-24-S, R-37-E	320	Gas	ACT
Plantation Operating, LLC	Myers Federal #1	D-7-24S-37E	NW/4 NW/4 Section 7, T-24-S, R-37-E	320	Gas	ACT
BP America Production Company	Jim Camp WN # 1	M-6-24S-37E	SW/4 SW/4 Section 6, T-24-S, R-37-E	120	Gas	ACT
BP America Production Company	Jim Camp WN # 2	E-6-24S-37E	SW/4 NE/4 Section 6, T-24-S, R-37-E	120	Gas	INA
Burlington Resources	Courtland Myers #1	J-6-24S-37E	NW/4 SE/4, Section 6, T-24S-37E	160	Gas	INA
Oxy USA WTP LP	Myers Langlie Mattix Unit #107	O-31-23S-37E	SW/4 SE/4 Section 31, T-23-S, R-37-E	40	Oil	INA

District I
1625 N. French Dr., Hobbs, NM 88240
District II
1301 W. Grand Avenue, Artesia, NM 88210
District III
1000 Rio Brazos Road, Aztec, NM 87410
District IV
1220 S. St. Francis Dr., Santa Fe, NM 87505

State of New Mexico
Energy Minerals and Natural Resources

Form C-101
May 27, 2004

Oil Conservation Division
1220 South St. Francis Dr.
Santa Fe, NM 87505

Submit to appropriate District Office

☐ AMENDED REPORT

APPLICATION FOR PERMIT TO DRILL, RE-ENTER, DEEPEN, PLUGBACK, OR ADD A ZONE

¹ Operator Name and Address Plantation Operating, LLC 2203 Timberloch Place, Suite 229, The Woodlands, Texas 77380		² OGRID Number 237788
		³ API Number 30-025-
³ Property Code 302096	⁵ Property Name Carter Eaves "NCT-A"	⁶ Well No. 3
⁹ Proposed Pool 1 Jalmat (Gas)		¹⁰ Proposed Pool 2

7 Surface Location

UL or lot no.	Section	Township	Range	Lot Idn	Feet from the	North/South line	Feet from the	East/West line	County
N	6	24S	37E		512'	South	1923'	West	Lea

8 Proposed Bottom Hole Location If Different From Surface

UL or lot no.	Section	Township	Range	Lot Idn	Feet from the	North/South line	Feet from the	East/West line	County

Additional Well Information

¹¹ Work Type Code N	¹² Well Type Code G	¹³ Cable/Rotary R	¹⁴ Lease Type Code P	¹⁵ Ground Level Elevation
¹⁶ Multiple No	¹⁷ Proposed Depth 3600'	¹⁸ Formation 7 Rivers	¹⁹ Contractor To Be Determined	²⁰ Spud Date ASAP
Depth to Groundwater 106'		Distance from nearest fresh water well > 1,000'		Distance from nearest surface water > 1,000'
Pit: Liner: Synthetic <input checked="" type="checkbox"/> 12 mils thick Clay <input type="checkbox"/> Pit Volume: 2400 bbls Drilling Method: Drilling				
Closed-Loop System <input type="checkbox"/> Fresh Water <input checked="" type="checkbox"/> Brine <input checked="" type="checkbox"/> Diesel/Oil-based <input type="checkbox"/> Gas/Air <input type="checkbox"/>				

21 Proposed Casing and Cement Program

Hole Size	Casing Size	Casing weight/foot	Setting Depth	Sacks of Cement	Estimated TOC
12 1/2"	8 5/8"	24#	450'	350	Surface
7 7/8"	5 1/2"	17#	3600'	700	Surface

22 Describe the proposed program. If this application is to DEEPEN or PLUG BACK, give the data on the present productive zone and proposed new productive zone. Describe the blowout prevention program, if any. Use additional sheets if necessary.

Before drilling out from surface pipe, the well will be equipped with a 3000-psi 10-inch Series-900 double-ram hydraulic BOP and Hydril and surface pipe and BOP system will be tested to a minimum pressure of 1500 psig. Cement volumes may be adjusted to insure that the cement behind both the 8-5/8" and 5-1/2" casing strings will be circulated in sufficient volumes to the surface.

23 I hereby certify that the information given above is true and complete to the best of my knowledge and belief. I further certify that the drilling pit will be constructed according to NMOCD guidelines ☒, a general permit ☐, or an (attached) alternative OCD-approved plan ☐.

OIL CONSERVATION DIVISION

Approved by:

Printed name: Donald P. Dotson, P.E.

Title:

Title: COO

Approval Date:

Expiration Date:

E-mail Address: ddotson@plantationpetro.com

Date: 3/28/2006

Phone: 281-296-7222

Conditions of Approval Attached ☐

State of New Mexico

DISTRICT I

1625 N. FRENCH DR., BOBBE, NM 88240

Energy, Minerals and Natural Resources Department

Form C-102

DISTRICT II

1301 W. GRAND AVENUE, ARTESIA, NM 88210

OIL CONSERVATION DIVISION

1220 SOUTH ST. FRANCIS DR.

Santa Fe, New Mexico 87505

Revised October 12, 2005

Submit to Appropriate District Office

State Lease - 4 Copies

Fee Lease - 3 Copies

DISTRICT III

1000 Rio Brazos Rd., Artec, NM 87410

DISTRICT IV

1220 S. ST. FRANCIS DR., SANTA FE, NM 87505

WELL LOCATION AND ACREAGE DEDICATION PLAT

☐ AMENDED REPORT

API Number	Pool Code	Pool Name
Property Code	Property Name CARTER EAVES NCT-A	Well Number 3
OGRID No.	Operator Name PLANTATION OPERATING, LLC	Elevation 3330'

Surface Location

UL or lot No.	Section	Township	Range	Lot Idn	Feet from the	North/South line	Feet from the	East/West line	County
N	6	24-S	37-E		512	SOUTH	1923	WEST	LEA

Bottom Hole Location If Different From Surface

UL or lot No.	Section	Township	Range	Lot Idn	Feet from the	North/South line	Feet from the	East/West line	County
Dedicated Acres	Joint or Infill	Consolidation Code	Order No.						

NO ALLOWABLE WILL BE ASSIGNED TO THIS COMPLETION UNTIL ALL INTERESTS HAVE BEEN CONSOLIDATED
OR A NON-STANDARD UNIT HAS BEEN APPROVED BY THE DIVISION

LOT 4	LOT 3	LOT 2	LOT 1
37.95 AC.	39.80 AC.	39.65 AC.	39.51 AC.
LOT 5			
	GEODETIC COORDINATES NAD 27 NME Y=453031.4 N X=849274.3 E LAT.=32°14'25.62" N LONG.=103°12'13.31" W		
38.04 AC.			
LOT 6			
38.08 AC.			
LOT 7			
38.10 AC.			

1923'
 512'

OPERATOR CERTIFICATION

I hereby certify that the information herein is true and complete to the best of my knowledge and belief, and that this organization either owns a working interest or unleased mineral interest in the land including the proposed bottom hole location or has a right to drill this well at this location pursuant to a contract with an owner of such mineral or working interest, or to a voluntary pooling agreement or a compulsory pooling order heretofore entered by the Division.

[Signature] **3/31/06**
 Signature Date
 JOHN ALLRED
 Printed Name

SURVEYOR CERTIFICATION

I hereby certify that the well location shown on this plat was plotted from field notes of actual surveys made by me or under my supervision, and that the same is true and correct to the best of my belief.

MARCH 27, 2006

Date Surveyed DSR
 Signature & Seal of Professional Surveyor
[Signature] 3/29/06
 06.11.0543
 Certificate No. GARY EDSON 12841