

CLOSURE REPORT

MCNEILL 12-INCH LOOPLINE

TARGA REF: 210011

COMPANY # 024650

UL-E (SW¼ OF THE NW¼) OF SECTION 11 T21S R37E

~3.8 MILES NORTH-NORTHEAST OF EUNICE

LEA COUNTY, NEW MEXICO

LATITUDE: N 32° 29' 38.54"

LONGITUDE: W 103° 08' 19.07"

JULY 2006

PREPARED BY:

**ENVIRONMENTAL PLUS, INC.
2100 AVENUE O
EUNICE, NEW MEXICO 88231**

PREPARED FOR:



**Targa
Resources, Inc.**

*facility - FPAC0620045564
incident - n PAC0620045676
application - p PAC0620045891*

RP# 967

*Need
IRP*





Distribution List

Targa Resources, Inc. – McNeill 12-inch Loopline (Targa Ref.: 210011)

Name	Title	Company or Agency	Mailing Address	e-mail
Larry Johnson	Environmental Engineer	New Mexico Oil Conservation Division – Hobbs	1625 French Drive Hobbs, NM 88240	lwjohnson@state.nm.us
Roger Holland	Field Specialist	Targa Resources, Inc. – Eunice	P.O. Box 1929 Eunice, NM 88231	rholland@targaresources.com
Paige McNeill	Landowner	- -	P.O. Box 1058 Hobbs, NM 88241	- -
File	- -	Environmental Plus, Inc.	P.O. Box 1558 Eunice, NM 88231-1558	jstegemoller@envplus.net



STANDARD OF CARE

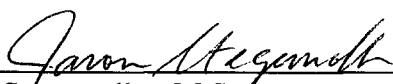
Closure Report

McNeill 12-Inch Loopline


(Ref. #210011)

The information provided in this report was collected consistent with the New Mexico Oil Conservation Division (NMOCD) *Guidelines for Remediation of Leaks, Spills and Releases* (August 13, 1993), the NMOCD *Unlined Surface Impoundment Closure Guidelines* (February, 1993) and Environmental Plus, Inc. (EPI) *Standard Operating Procedures and Quality Assurance/Quality Control Plan*. The conclusions are based on field observations and laboratory analytical reports as presented in the report. Recommendations follow NMOCD guidance and represent the professional opinions of EPI staff. These opinions were derived using currently accepted geologic, hydrogeologic and engineering practices at this time and location. The report was prepared or reviewed by a certified or registered professional with a background in engineering, environmental and/or natural sciences.

This report was prepared by:




Jason Stegemoller, M.S.
Environmental Scientist

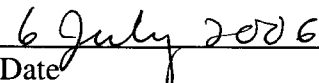


Date

This report was reviewed by:



Iain A. Olness, P.G.
Technical Manager



Date



Table of Contents

1.0	Project Synopsis	iv
2.0	Site and Release Information	1
3.0	NMOCD Site Ranking	2
4.0	Excavation Soil Information	3
5.0	Sampling Information	4
6.0	Analytical Results	5
7.0	Discussion	6
8.0	Conclusion and Recommendations	7

FIGURES

Figure 1: Area Map
Figure 2: Site Location Map
Figure 3: Site Map
Figure 4: Excavation A Sample Location Map
Figure 5: Excavation B Sample Location Map
Figure 6: Excavation C Sample Location Map

TABLES

Table 1: Summary of Soil Sample Analytical Results
Table 2: Well Data

APPENDICES

Appendix I: Laboratory Analytical Reports and Chain-of-Custody Forms
Appendix II: Project Photographs
Appendix III: Final NMOCD C-141 Form



1.0 PROJECT SYNOPSIS

Site Specific:

- ◆ **Company Name:** Targa Resources, Inc.
- ◆ **Facility Name:** McNeill 12-inch Loopline
- ◆ **Project Reference:** 210011
- ◆ **Company Contacts:** Roger Holland
- ◆ **Site Location:** WGS84 N32° 29' 38.54"; W103° 04' 19.07"
- ◆ **Legal Description:** Unit Letter-E, (SW¼ of the NW¼), Section 11, T 21S, R 37E
- ◆ **General Description:** Approximately 3.8-miles northeast of Eunice, New Mexico
- ◆ **Elevation:** 3,442-ft amsl
- ◆ **Land Ownership:** Paige McNeill
- ◆ **EPI Personnel:** Project Consultant – Jason Stegemoller
Field Technician – George Blackburn

Release Specific:

- ◆ **Product Released:** Natural Gas and Natural Gas Liquids (NGL)
- ◆ **Volume Released:** unknown **Volume Recovered:** none
- ◆ **Time of Occurrence:** unknown. **Time of Discovery:** 10 December 2005
- ◆ **Release Source:** 12-inch steel natural gas pipeline
- ◆ **Initial Surface Area Affected:** ~ 900 square feet

Remediation Specific:

- ◆ **Final Vertical extent of contamination:** 22-feet bgs at maximum depth
- ◆ **Depth to Ground Water:** ~64-ft bgs above the draw, ~25-ft bgs in the draw
- ◆ **Water wells within 1,000-ft:** two (U.S.G.S. 1 and 2)
- ◆ **Private domestic water sources within 200-ft:** None
- ◆ **Surface water bodies within 1,000-ft:** one (Monument Draw)
- ◆ **NMOCD Site Ranking Index:** 50 points
- ◆ **Remedial goals for Soil:** TPH – 100 mg/Kg; BTEX – 50 mg/Kg; Benzene – 10 mg/Kg; Chloride and sulfate residuals may not be capable of impacting groundwater above NMWQCC groundwater standards of 250 mg/Kg and 600 mg/Kg, respectively.
- ◆ **RCRA Waste Classification:** Exempt
- ◆ **Remediation Option Selected:** a) Impacted soil above NMOCD remedial goals was excavated and transported to the EPI Land Farm for treatment; b) laboratory analyses to confirm removal of soil impacted above NMOCD remedial thresholds and NMWQCC groundwater standards in excavation bottom; c) backfill excavation with clean soil purchased from the State of New Mexico.
- ◆ **Disposal Facility:** Environmental Plus, Inc. Land Farm – Eunice, New Mexico
- ◆ **Volume disposed:** ~2,770-yd³
- ◆ **Project Completion Date:** 20 April 2006



2.0 **SITE AND RELEASE INFORMATION**

2.1 ***Describe the land use and pertinent geographic features within 1,000 feet of the site.***
Land surrounding the area is rangeland in native grasses and would be utilized for livestock grazing.

2.2 ***Identify and describe the source or suspected source(s) of the release.***
Corrosion of 12-inch steel natural gas pipeline.

2.3 ***What is the volume of the release? (if known):*** unknown ***barrels of natural gas and natural gas liquids***

2.4 ***What is the volume recovered? (if any)*** 0 ***barrels***

2.5 ***When did the release occur? (if known):*** unknown

2.6 ***Geological Description***

The United States Geological Survey (USGS) Ground-Water Report 6, "*Geology and Ground-water Conditions in Southern Lea County, New Mexico*," A. Nicholson and A. Clebsch, 1961, describes the near surface geology of southern Lea County as "an intergrade of the Quaternary Alluvium (QA) sediments (i.e., fine to medium sand) with the mostly eroded Cenozoic Ogallala (CO) formation. Typically, the QA and CO formations in the area are capped by a thick interbed of caliche and generally overlain by sandy soil."

The release site is located in the Eunice Plains physiographic subdivision, described by Nicholson & Clebsch as an area that "is underlain by a hard caliche surface and is almost entirely covered by reddish-brown dune sand. The sand cover is 2 to 5 feet thick over most of the area."

2.7 ***Ecological Description***

The area is typical of the Upper Chihuahuan Desert Biome consisting primarily of sandy soil covered with short, semi-arid grasses, interspersed with Honey Mesquite and forbs. Mammals represented include Orrd's and Merriam's Kangaroo Rats, Deer Mouse, White Throated Wood Rat, Cottontail Rabbit, Black Tailed Jackrabbit, Mule Deer, Bobcat, Red Fox and Coyote. Reptiles, amphibians and birds are numerous and typical of the area. A survey of Listed, Threatened or Endangered species was not conducted.

2.8 ***Area Groundwater***

The unconfined groundwater aquifer at this site is projected to be ~64-ft bgs above the draw and ~25-ft bgs in the draw based on water depth data obtained from the New Mexico State Engineers Office and the United States Geological Survey data base (reference *Table 1*). Groundwater gradient in this area is generally to the southeast.

2.9 ***Area Water Wells***

There are two water supply wells located within a 1,000-foot radius of the release site. However, there are no private, domestic fresh water wells or springs used by less than five households for domestic or stock watering purposes located within a 200-foot radius of the release site (reference *Table 2* and *Figure 2*).

2.10 ***Area Surface Water Features***

The Monument Draw surface water drainage feature is within a 1,000 foot radius of the release site (reference *Figure 2*).



3.0 NMOCD SITE RANKING

Contaminant delineation and remedial work done at this site indicate chemical parameters of the soil and physical parameters of the groundwater were characterized consistent with the characterization and remediation/abatement goals and objectives set forth in the following New Mexico Oil Conservation Division (NMOCD) publications:

- ♦ *Guidelines for Remediation of Leaks, Spills and Releases (August 13, 1993)*
- ♦ *Unlined Surface Impoundment Closure Guidelines (February, 1993)*
- ♦ *Pit and Below-Grade Tank Guidelines (November, 2004)*

Acceptable thresholds for contaminants/constituents of concern (CoC) were determined based on the NMOCD Ranking Criteria as follows:

- ♦ *Depth to Groundwater (i.e., distance from the lower most acceptable concentration to ground-water);*
- ♦ *Wellhead Protection Area (i.e., distance from fresh water supply wells);*
- ♦ *Distance to Surface Water Body (i.e., horizontal distance to all down gradient surface water bodies).*

Based on the proximity of the site to protectable area water wells, surface water bodies, and depth to groundwater from the lower most contamination, the NMOCD ranking score for the site is fifty points with the soil remedial goals highlighted in the Site Ranking table presented below:

1. GROUNDWATER		2. WELLHEAD PROTECTION AREA	3. DISTANCE TO SURFACE WATER
Depth to GW <50 feet: 20 points		If <1,000' from water source, or <200' from private domestic water source: 20 points	<200 horizontal feet: 0 points
Depth to GW 50 to 99 feet: 10 points			200 - 1,000 horizontal feet: 10 points
Depth to GW >100 feet: 0 points		If >1,000' from water source, or >200' from private domestic water source: 0 points	>1,000 horizontal feet: 0 points
Site Rank (1+2+3) = 20 + 20 +20 = 60 points			
Total Site Ranking Score and Acceptable Remedial Goal Concentrations			
Parameter	20 or >	10	0
Benzene ¹	10 ppm	10 ppm	10 ppm
BTEX ¹	50 ppm	50 ppm	50 ppm
TPH	100 ppm	1,000 ppm	5,000 ppm

¹ A field soil vapor headspace measurement of 100 ppm can be substituted in lieu of laboratory analyses for benzene and BTEX.



4.0 **EXCAVATED SOIL INFORMATION**

4.1 *Was soil excavated for off-site treatment or disposal?* ☒ Yes ☐ No

Date excavated: January 13, 2006 through March 1, 2006

Total volume removed: ~2,270 cubic yards

4.2 *Indicated soil treatment type:*

<input type="checkbox"/>	<i>Disposal</i>
<input checked="" type="checkbox"/>	<i>Land Treatment</i>
<input type="checkbox"/>	<i>Composting/Biopiling</i>
<input type="checkbox"/>	<i>Other ()</i>

Name and location of treatment/disposal facility:

Environmental Plus, Inc. Land Farm – Eunice, New Mexico



5.0 **SAMPLING INFORMATION**

5.1 ***Briefly describe the field screening methods used to distinguish contaminated from uncontaminated soil.***

Organic Vapor Concentrations – A portion of each soil sample was placed in a polyethylene bag and allowed sufficient time and temperature for organic vapors to volatilize. The detector portion of a Photoionization Detector equipped with a 10.6 electron volt lamp was placed in the bag to analyze organic vapor concentration.

Chloride Concentrations – A La Motte Chloride Test Kit was utilized for field chloride concentration analyses.

5.2 ***Briefly describe the soil analytical sampling and handling procedures used.***

Soil samples collected from the excavation were collected utilizing hand and/or mechanical excavation equipment to gather the sample from at least 6-inches below/within the surface of the excavation. Sampling equipment was decontaminated between sample collections utilizing an Alconox decontamination solution. Field technicians utilized latex gloves to prevent contamination of samples.

Upon collection of each sample, a portion was immediately placed in a laboratory provided container, labeled and set on ice for transport to an independent laboratory for quantification of total petroleum hydrocarbons (TPH), benzene, toluene, ethylbenzene and total xylenes (BTEX), chloride and sulfate concentrations.

5.3 ***Discuss sample locations and provide rationale for their locations.***

On January 18, 2006, a soil sample was collected at approximately 22-ft bgs from the floor of a test trench excavated near the point of release at the western release area to delineate the vertical extent of contamination.

On January 31, 2006, sixteen soil samples were collected from the western excavation (Excavation A) sidewalls and floor, six soil samples were collected from the central excavation (Excavation B) and 5 soil samples were collected from the eastern excavation (Excavation C) (reference *Figures 4, 5 and 6*). Soil sample locations were chosen to provide the best representative example of soil within the excavation floor and sidewalls.

On February 28, 2006 and March 1, 2006, soil samples were collected from the southeast sidewall of the middle excavation (Excavation B) and the west and south sidewalls of the eastern excavation (Excavation C) (reference *Figure 5 and 6*). Soil sample locations were chosen to provide the best representative example of soil within the excavation floor and sidewalls.



6.0 ANALYTICAL RESULTS

6.1 *Describe the vertical and horizontal extent and magnitude of soil contamination.*

Laboratory analyses of the soil sample collected on January 18, 2006 from the test trench (BH-22') indicated BTEX constituent concentrations were ND at or above laboratory MDL. TPH was reported at 13.4, below the NMOCD remedial threshold of 100 mg/Kg. The chloride concentration was reported at 16.0 mg/Kg and sulfate concentration was 3 mg/Kg (reference *Table 2, Figure 4 and Appendix I*).

Laboratory analyses of soil samples collected on January 18, 2006 from the western excavation (Excavation A) floor and sidewalls indicated TPH and BTEX constituent concentrations were ND at or above laboratory MDL, with the exception of the soil sample collected from the middle of the south sidewall at 4-ft bgs (A-SMSW-4'). Analyses of this sample indicated a benzene concentration of 0.0230 mg/Kg, a BTEX concentration of 0.118 mg/Kg and a TPH concentration of 75.0 mg/Kg, below each analytes' respective NMOCD remedial threshold. Reported chloride concentrations in the excavation floor were 16 mg/Kg for all sample locations. Chloride concentrations in the sidewalls were reported to range from 16 to 336 mg/Kg. Sulfate concentrations in the excavation floor were reported to range from <1 to 126 mg/Kg. Reported sulfate concentrations in the excavation sidewalls ranged from <1 to 654 mg/Kg (reference *Table 2, Figure 4 and Appendix I*).

Laboratory analyses of soil samples collected on January 18, 2006 from the middle excavation (Excavation B) floor and sidewalls indicated TPH and BTEX constituent concentrations were below ND at or above laboratory MDL, with the exception of the sample collected from the southeast sidewall (B-SESW-3'). Laboratory analyses of this sample indicated a TPH concentration of 10,400 mg/Kg, above the NMOCD remedial threshold of 100 mg/Kg (reference *Table 2, Figure 5 and Appendix I*).

Laboratory analyses of soil samples collected on January 18, 2006 from the eastern excavation (Excavation C) floor and sidewalls indicated TPH and BTEX constituent concentrations were ND at or above laboratory MDL. Chloride concentrations were reported to range from 16 to 48 mg/Kg. Sulfate concentrations were reported to range from 63 to 1,324 mg/Kg (reference *Table 2, Figure 6 and Appendix I*).

Laboratory analyses of soil samples collected from the middle excavation on February 28, 2006 from the southeast sidewall (B-ESW-3' A) indicated TPH and BTEX constituent concentrations were ND at or above laboratory MDL. Reported chloride concentrations in all sample locations ranged from 16 to 240 mg/Kg and sulfate concentrations ranged from 163 to 394 mg/Kg (reference *Table 2, Figure 5 and Appendix I*).

Laboratory analyses of soil samples collected from eastern excavation on March 1, 2006 from the south sidewall (C-WSW-5' A) and west sidewall (C-SSW-5' A) indicated TPH and BTEX constituent concentrations were ND at or above laboratory MDL. Chloride concentrations were reported to range from 16 to 384 mg/Kg. Sulfate concentrations were reported to range from 488 to 566 mg/Kg (reference *Table 2, Figure 6 and Appendix I*).



- 6.2 *Is surface soil contamination present at the site (i.e., soil in the uppermost two feet that is visibly stained, contaminated at greater than 10 ppm (PID) or hydrocarbon saturated)?*

☐ *yes* ☒ *no*

If yes, attach a site map identifying extent(s) of surface soil contamination.

Visibly stained soil has been excavated and transported to the EPI Land Farm for treatment.



7.0 **DISCUSSION**

7.1 ***Discuss the risks associated with the remaining soil contamination:***

Soil impacted above NMOCD remedial thresholds and NMWQCC groundwater standards has been excavated from the floor of Excavations A, B and C. Based on depth to groundwater (40 to 50-ft bgs), contaminants remaining in the sidewalls should not be capable of impacting groundwater above NMWQCC groundwater standards.

7.2 ***Discuss the risks associated with the impacted groundwater:*** Not Applicable

7.3 ***Discuss other concerns not mentioned above:*** Not Applicable



8.0 CONCLUSIONS AND RECOMMENDATIONS

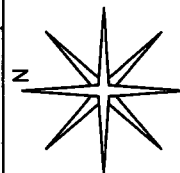
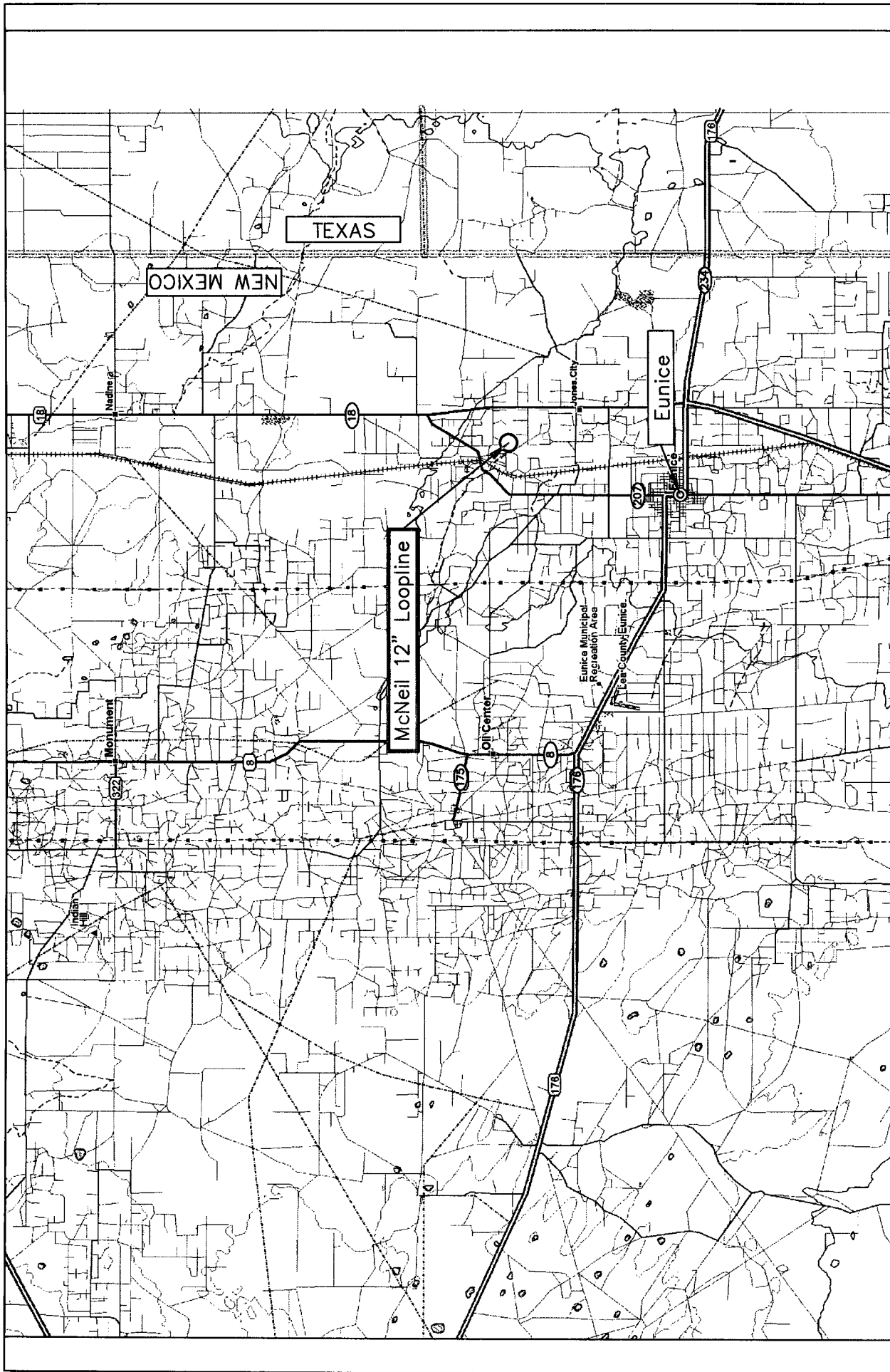
- 8.1 *Recommendation for the site:*
- ☒ *Site Closure*
☐ *Additional Groundwater Monitoring*
☐ *Corrective Action*

- 8.2 *Base the recommendation above on Guidelines for Remediation of Leaks, Spills and Releases (August 13, 1993). Describe below how you applied the policy to support your recommendation. If closure is recommended, please summarize significant site investigative events and describe how site specific risk issues have been adequately addressed or minimized to acceptable low risk levels.*

Approximately 2,270 cubic yards of soil impacted above the NMOCD remedial thresholds for TPH and BTEX constituents were excavated by Hungry Horse, LLC (with technical support from an EPI Field Technician) and transported to the Environmental Plus, Inc. Land Farm for treatment. Laboratory analytical results of soil samples collected by EPI personnel from the excavation floor and sidewalls indicated NMOCD remedial thresholds have been achieved. Approximately 2,270 cubic yards of clean soil were purchased from the landowner and utilized as backfill material. Upon NMOCD approval the site was backfilled, and the site was graded to allow natural drainage. Environmental Plus, Inc., on behalf of Targa Resources, recommends the site be closed and request the NMOCD require no further action and issue Targa Resources a site closure letter.

- 8.3 *If additional groundwater and monitoring is recommended, indicate the proposed monitoring schedule and frequency. Conduct quarterly monitoring until the NMOCD responds to this report.* Not Applicable
- 8.4 *If corrective action is recommended, provide a conceptual approach.* Not Applicable

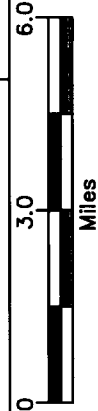
FIGURES



REVISED:

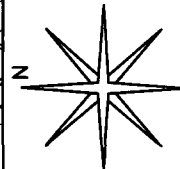
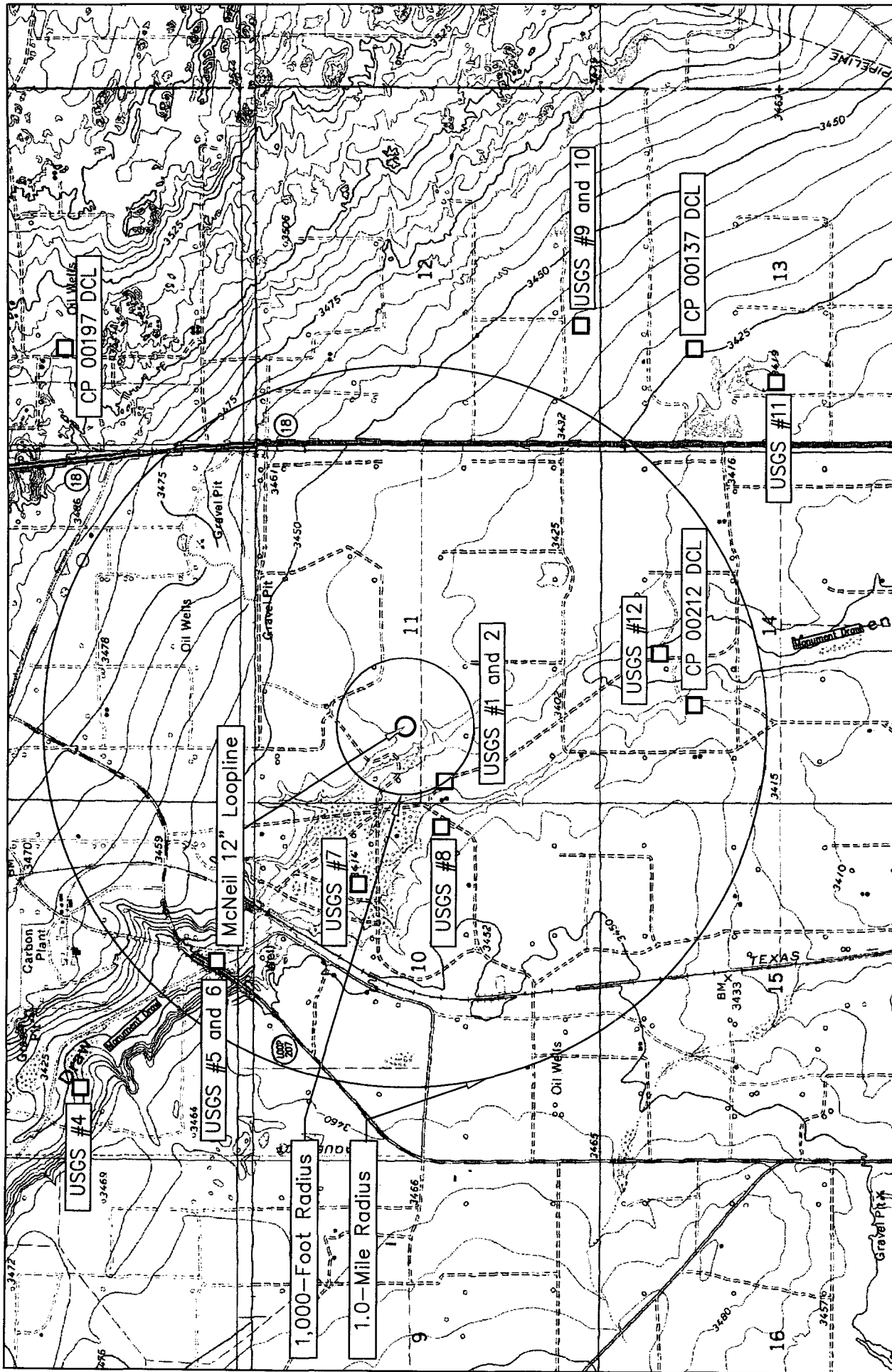
DWG By: Jason Stegemoller
January 2006

SHEET
1 of 1



Lea County, New Mexico
SW 1/4 of the NW 1/4, Sec. 11, T21S, R37E
N 32° 29' 38.54" W 103° 08' 19.07"
Elevation: 3,442 feet amsl

Figure 1
Area Map
Targa Resources
McNeil 12" Loopline



DWG By: Jason Stegemoller
January 2006

REVIS: 1 of 1

0 2,000 4,000 Feet

Lea County, New Mexico

SW 1/4 of the NW 1/4, Sec. 11, T21S, R37E

N 32° 29' 38.54" W 103° 08' 19.07"

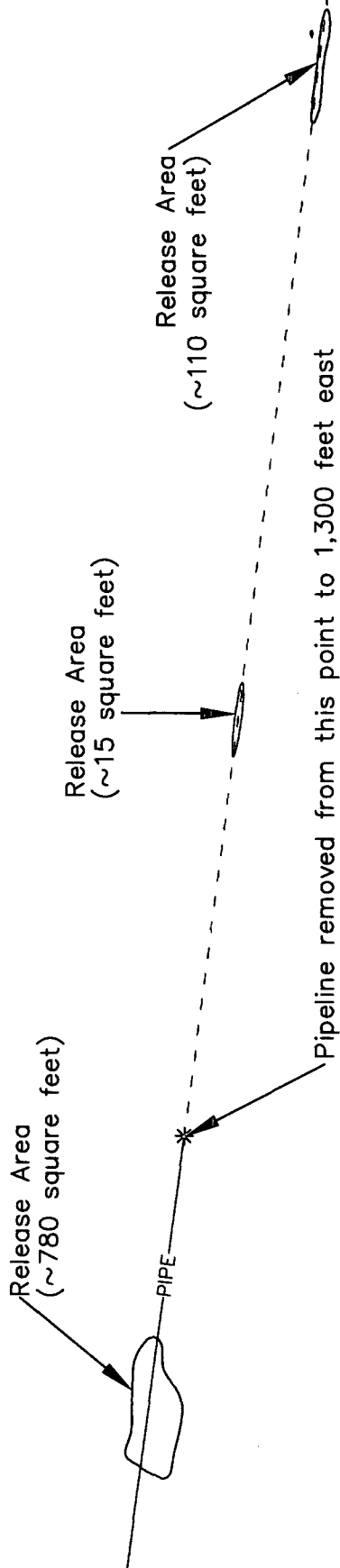
Elevation: 3,442 feet amsl

Figure 2

Site and Well Location Map

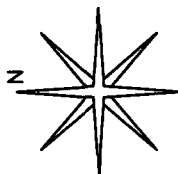
Targa Resources

McNeil 12" Loopline



LEGEND

—PIPE— Pipeline
(12" Steel)



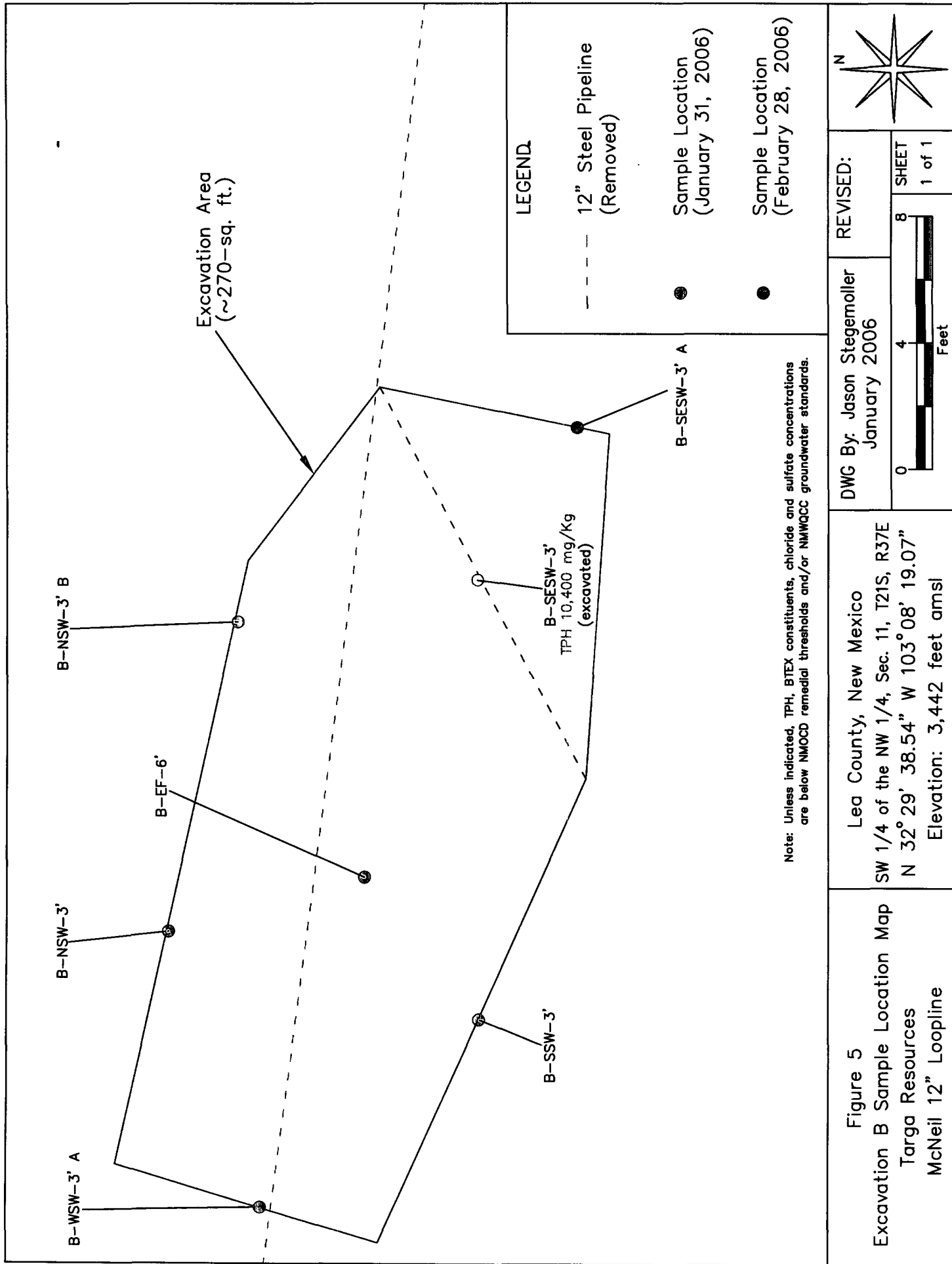
DWG By: Jason Stegemoller
January 2006

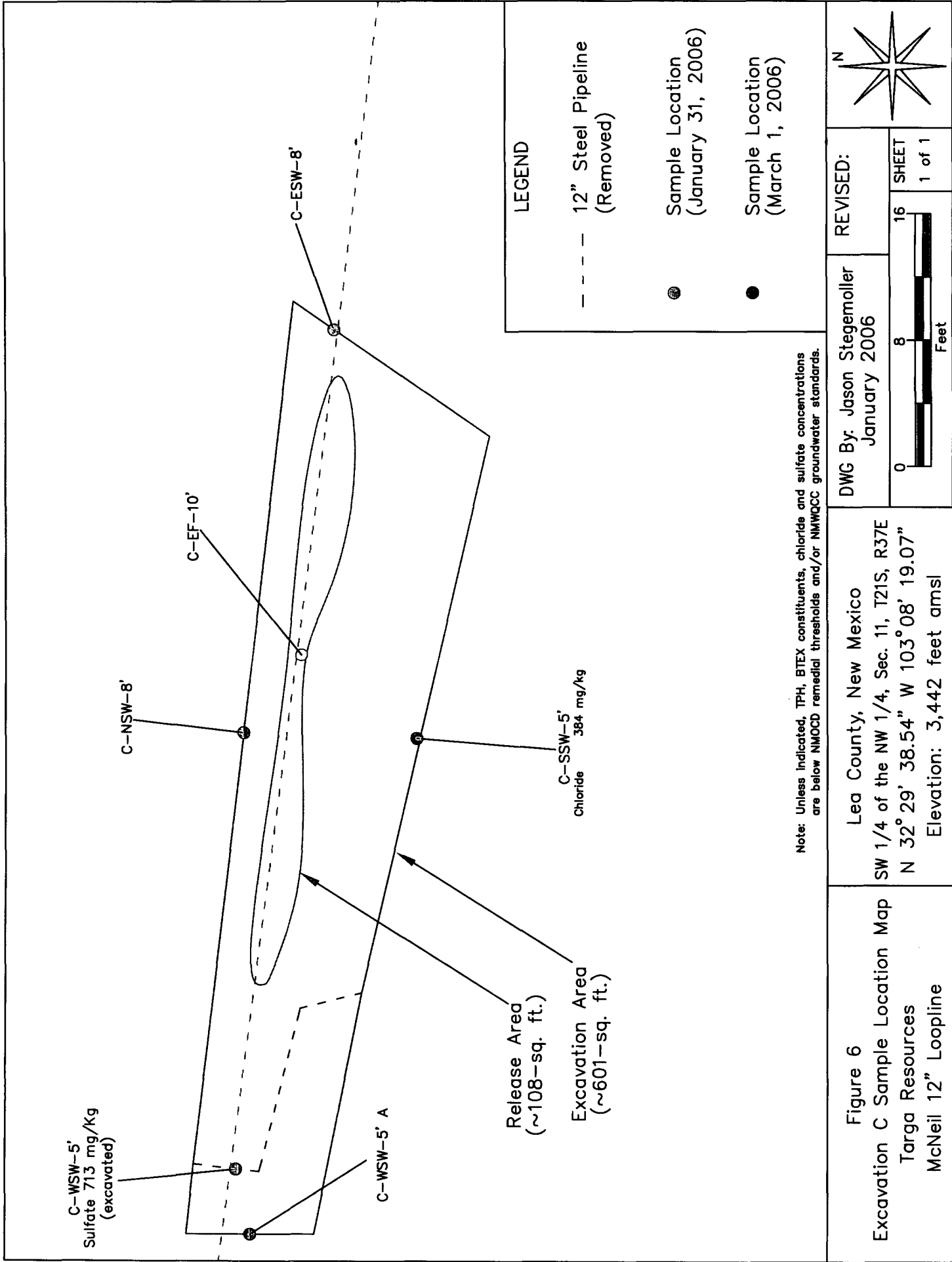
REVISED:



Lea County, New Mexico
SW 1/4 of the NW 1/4, Sec. 11, T21S, R37E
N 32° 29' 38.54" W 103° 08' 19.07"
Elevation: 3,442 feet amsl

Figure 3
Site Map
Targa Resources
McNeil 12" Loopline





TABLES

TABLE 1
Summary of Soil Sample Laboratory Analytical Results
Targa Resources- McNeill 12-inch Loopline (Ref. #210011)

Sample ID.	Depth (feet)	Soil Status	PID Analyses (ppm)	Sample Date	Benzene (mg/Kg)	Toluene (mg/Kg)	Ethylbenzene (mg/Kg)	Total Xylenes (mg/Kg)	Total BTEX (mg/Kg)	TPH (as gasoline) (mg/Kg)	TPH (as diesel) (mg/Kg)	Total TPH (mg/Kg)	Chloride (mg/Kg)	Sulfate (mg/Kg)
BH-22'	22	In Situ	--	18-Jan-06	<0.002	<0.002	<0.002	<0.006	<0.012	<10.0	13.4	13.4	16.0	3
A-WSW-8'	8	In Situ	--	31-Jan-06	<0.002	<0.002	<0.002	<0.006	<0.012	<10.0	<10.0	<20.0	16	512
A-WSW-12'	12	In Situ	--	31-Jan-06	<0.002	<0.002	<0.002	<0.006	<0.012	<10.0	<10.0	<20.0	16	<1
A-ESW-6'	6	In Situ	--	31-Jan-06	<0.002	<0.002	<0.002	<0.006	<0.012	<10.0	<10.0	<20.0	16	341
A-EF-12'	12	In Situ	--	31-Jan-06	<0.002	<0.002	<0.002	<0.006	<0.012	<10.0	<10.0	<20.0	16	126
A-MF-22'	22	In Situ	--	31-Jan-06	<0.002	<0.002	<0.002	<0.006	<0.012	<10.0	<10.0	<20.0	16	<1
A-WF-12'	12	In Situ	--	31-Jan-06	<0.002	<0.002	<0.002	<0.006	<0.012	<10.0	<10.0	<20.0	16	<1
A-NESW-6'	6	In Situ	--	31-Jan-06	<0.002	<0.002	<0.002	<0.006	<0.012	<10.0	<10.0	<20.0	16	622
A-NMSW-6	6	In Situ	--	31-Jan-06	<0.002	<0.002	<0.002	<0.006	<0.012	<10.0	<10.0	<20.0	336	654
A-NMSW-12'	12	In Situ	--	31-Jan-06	<0.002	<0.002	<0.002	<0.006	<0.012	<10.0	<10.0	<20.0	16	239
A-NWSW-6'	6	In Situ	--	31-Jan-06	<0.002	<0.002	<0.002	<0.006	<0.012	<10.0	<10.0	<20.0	16	105
A-NWSW-15'	15	In Situ	--	31-Jan-06	<0.002	<0.002	<0.002	<0.006	<0.012	<10.0	<10.0	<20.0	16	76
A-SESW-6'	6	In Situ	--	31-Jan-06	<0.002	<0.002	<0.002	<0.006	<0.012	<10.0	<10.0	<20.0	192	579
A-SMSW-4'	4	In Situ	--	31-Jan-06	0.0230	0.0100	0.0200	0.0650	0.118	<10.0	75.0	75.0	16	381
A-SMSW-15'	15	In Situ	--	31-Jan-06	<0.002	<0.002	<0.002	<0.006	<0.012	<10.0	<10.0	<20.0	16	62
A-SWSW-6'	6	In Situ	--	31-Jan-06	<0.002	<0.002	<0.002	<0.006	<0.012	<10.0	<10.0	<20.0	16	143
A-SWSW-15'	15	In Situ	--	31-Jan-06	<0.002	<0.002	<0.002	<0.006	<0.012	<10.0	<10.0	<20.0	16	75

TABLE 1
Summary of Soil Sample Laboratory Analytical Results
Targa Resources- McNeill 12-inch Loophole (Ref. #210011)

Sample I.D.	Depth (feet)	Soil Status	PID Analyses (ppm)	Sample Date	Benzene (mg/Kg)	Toluene (mg/Kg)	Ethylbenzene (mg/Kg)	Total Xylenes (mg/Kg)	Total BTEX (mg/Kg)	TPH (as gasoline) (mg/Kg)	TPH (as diesel) (mg/Kg)	Total TPH (mg/Kg)	Chloride (mg/Kg)	Sulfate (mg/Kg)
B-NSW-3'	3	In Situ	--	31-Jan-06	<0.002	<0.002	<0.002	<0.006	<0.012	<10.0	<10.0	<20.0	80	182
B-SSW-3'	3	In Situ	--	31-Jan-06	<0.002	<0.002	<0.002	<0.006	<0.012	<10.0	<10.0	<20.0	80	394
B-WSW-3' A	3	In Situ	--	31-Jan-06	<0.002	<0.002	<0.002	<0.006	<0.012	<10.0	<10.0	<20.0	16	163
B-NSW-3' B	3	In Situ	--	31-Jan-06	<0.002	<0.002	<0.002	<0.006	<0.012	<10.0	<10.0	<20.0	240	394
B-EF-6'	6	In Situ	--	31-Jan-06	<0.002	<0.002	<0.002	<0.006	<0.012	<10.0	<10.0	<20.0	32	180
B-SESW-3'	3	Excavated	--	31-Jan-06	--	--	--	--	--	617	9,800	10,400	--	--
B-SESW-3' A	3	In Situ	--	28-Feb-06	<0.005	<0.005	<0.005	<0.015	<0.030	<10.0	<10.0	<20.0	16.0	115
C-NSW-8'	8	In Situ	--	31-Jan-06	<0.002	<0.002	<0.002	<0.006	<0.012	<10.0	<10.0	<20.0	16	257
C-ESW-8'	8	In Situ	--	31-Jan-06	<0.002	<0.002	<0.002	<0.006	<0.012	<10.0	<10.0	<20.0	16	63
C-WSW-5'	5	Excavated	--	31-Jan-06	<0.002	<0.002	<0.002	<0.006	<0.012	<10.0	<10.0	<20.0	16	713
C-WSW-5' A	5	In Situ	--	01-Mar-06	<0.005	<0.005	<0.005	<0.015	<0.030	<10.0	<10.0	<20.0	16	566
C-SSW-5'	5	Excavated	--	31-Jan-06	<0.002	<0.002	<0.002	<0.006	<0.012	<10.0	<10.0	<20.0	48	1,324
C-SSW-5' A	5	In Situ	--	01-Mar-06	<0.005	<0.005	<0.005	<0.015	<0.030	<10.0	<10.0	<20.0	384	488
C-EF-10'	10	In Situ	--	31-Jan-06	<0.002	<0.002	<0.002	<0.006	<0.012	<10.0	<10.0	<20.0	32	459
NMOCD Remedial Thresholds					10				50			100	250 ^A	600 ^A

Bolded values are in excess of NMOCD Remediation Thresholds

^A Chloride and Sulfate residuals may not be capable of impacting local groundwater above the NMWQCC standards of 250 mg/L and 650 mg/L.

TABLE 2

Well Data

Targa Resources- McNeil 12" Loopline (Ref. #210011)

Well Number	Diversion ^A	Owner	Use	Twsp	Rng	Sec q q q	Latitude	Longitude	Date Measured	Well Depth (ft bgs)	Depth to Water (ft bgs)
CP 00137 DCL	0	WM. O. STEPHENS	STK	21S	37E	13 1 2 2	N 32° 28' 56.6"	W 103° 7' 13.71"			
CP 00197 DCL	0	GEORGE W. SIMS	DOM	21S	37E	01 1 4 1	N 32° 30' 28.06"	W 103° 7' 13.8"			
CP 00212 DCL	0	J. M. OWENS	DOM	21S	37E	14 1 2 2	N 32° 28' 56.59"	W 103° 8' 15.29"			
USGS #1				21S	37E	11 3 1 1			21-Apr-55		36.23
USGS #2				21S	37E	11 3 1 1			23-Jan-76		21.07
USGS #3				21S	37E	01 2 4 2			23-Feb-77		72.63
USGS #4				21S	37E	03 3 1 2			09-Feb-96		22.24
USGS #5				21S	37E	03 4 3 3			17-Apr-91		26.52
USGS #6				21S	37E	03 4 3 3			04-Mar-59		23
USGS #7				21S	37E	10 2 4 1			24-Apr-91		24.87
USGS #8				21S	37E	10 4 2 2			26-Feb-81		24.43
USGS #9				21S	37E	12 3 4 3			12-Mar-68		64.95
USGS #10				21S	37E	12 3 4 3			23-Jan-91		68.71
USGS #11				21S	37E	13 1 3 4			13-Mar-96		53.37
USGS #12				21S	37E	14 1 2 4			13-Mar-96		27.84
USGS #13				21S	37E	14 3 4 4			23-Jan-76		48.56
USGS #14				21S	37E	14 4 3 3			19-Apr-91		55.05
USGS #15				21S	37E	14 4 3 3			02-Nov-65		52.63
USGS #16				21S	37E	15 3 3 4			19-Apr-91		49.06

* = Data obtained from the New Mexico Office of the State Engineer Website (http://iwaters.ose.state.nm.us:7001/iWATERS/wr_RegisServlet1)^A = in acre feet per annum^B = Elevation interpolated from USGS topographical map based on referenced location.

DOM = Domestic

STK= Livestock watering

quarters are 1=NW, 2=NE, 3=SW, 4=SE; quarters are biggest to smallest

APPENDICES

APPENDIX I

LABORATORY ANALYTICAL REPORTS

AND

CHAIN-OF-CUSTODY FORM



ARDINAL LABORATORIES

PHONE (325) 673-7001 • 2111 BEECHWOOD • ABILENE, TX 79603

PHONE (505) 393-2326 • 101 E. MARLAND • HOBBS, NM 88240

ANALYTICAL RESULTS FOR ENVIRONMENTAL PLUS, INC.

ATTN: IAIN OLNESS

P.O. BOX 1558

EUNICE, NM 88231

FAX TO: (505) 394-2601

Receiving Date: 01/18/06

Reporting Date: 01/20/06

Project Owner: TARGA MIDSTREAM SERVICES (#210011)

Project Name: McNEILL 12-INCH LOOPLINE

Project Location: NOT GIVEN

Sampling Date: 01/18/06

Sample Type: SOIL

Sample Condition: COOL & INTACT

Sample Received By: NF

Analyzed By: HM

LAB NUMBER	SAMPLE ID	SO ₄ (mg/Kg)	Cl (mg/Kg)
ANALYSIS DATE:		01/19/06	01/19/06
H10630-1	BH-22'	3	16
Quality Control		21.4	500
True Value QC		25.0	500
% Recovery		86	100
Relative Percent Difference		16.3	0.0

METHODS: EPA 600/4-79-020	375.4	SM 4500 Cl/B
---------------------------	-------	--------------

Note: Analysis performed on a 1:4 w:v aqueous extract.


Chemist

01-23-06
Date

PLEASE NOTE: **Liability and Damages.** Cardinal's liability and client's exclusive remedy for any claim arising, whether based in contract or tort, shall be limited to the amount paid by client for analyses. All claims, including those for negligence and any other cause whatsoever shall be deemed waived unless made in writing and received by Cardinal within thirty (30) days after completion of the applicable service. In no event shall Cardinal be liable for incidental or consequential damages, including, without limitation, business interruptions, loss of use, or loss of profits incurred by client, its subsidiaries, affiliates or successors arising out of or related to the performance of services hereunder by Cardinal, regardless of whether such claim is based upon any of the above-stated reasons or otherwise.



ARDINAL LABORATORIES

PHONE (325) 673-7001 • 2111 BEECHWOOD • ABILENE, TX 79603

PHONE (505) 393-2326 • 101 E. MARLAND • HOBBS, NM 88240

ANALYTICAL RESULTS FOR ENVIRONMENTAL PLUS, INC.

ATTN: IAIN OLNESS

P.O. BOX 1558

EUNICE, NM 88231

FAX TO: (505) 394-2601

Receiving Date: 01/18/06

Reporting Date: 01/23/06

Project Owner: TARGA MIDSTREAM SERVICES (#210011)

Project Name: McNEILL 12-INCH LOOPLINE

Project Location: NOT GIVEN

Sampling Date: 01/18/06

Sample Type: SOIL


Sample Condition: COOL & INTACT

Sample Received By: NF

Analyzed By: BC/JC

LAB NUMBER	SAMPLE ID	GRO (C ₆ -C ₁₀) (mg/Kg)	DRO (>C ₁₀ -C ₂₈) (mg/Kg)	BENZENE (mg/Kg)	TOLUENE (mg/Kg)	ETHYL BENZENE (mg/Kg)	TOTAL XYLENES (mg/Kg)
ANALYSIS DATE:		01/18/06	01/18/06	01/20/06	01/20/06	01/20/06	01/20/06
H10630-1	BH-22'	<10.0	13.4	<0.002	<0.002	<0.002	<0.006
Quality Control		767	803	0.104	0.098	0.100	0.297
True Value QC		800	800	0.100	0.100	0.100	0.300
% Recovery		65.9	100	104	98	100	93
Relative Percent Difference		2.1	8.7	4.0	5.5	5.4	5.8

METHODS: TPH GRO & DRO - EPA SW-846 8015 M; BTEX - SW-846 8021B.


Burgess J. A. Cooke, Ph. D.

1/23/06
Date

H10630A.XLS

DISCLAIMER NOTE: Liability and Damages. Cardinal's liability and client's exclusive remedy for any claim arising, whether based in contract or tort, shall be limited to the amount paid by client for analyses. Claims, including those for negligence and any other cause whatsoever shall be deemed waived unless made in writing and received by Cardinal within thirty (30) days after completion of the applicable service. In no event shall Cardinal be liable for incidental or consequential damages, including, without limitation, business interruptions, loss of use, or loss of profits incurred by client, its subsidiaries, affiliates or successors arising out of or related to the performance of services hereunder by Cardinal, regardless of whether such claim is based upon any of the above-stated reasons or otherwise.

101 East Marland, Hobbs, NM 88240
505-393-2326 Fax 505-393-2476

2111 Beechwood, Abilene, TX 79603
915-673-7001 Fax 915-673-7020

Company Name	Environmental Plus, Inc.	Bill To	ANALYSES REQUESTED
EPI Project Manager	Iain Olness		
Mailing Address	P.O. BOX 1558		
City, State, Zip	Eunice New Mexico 88231		
EPI Phone#/Fax#	505-394-3481 / 505-394-2601		
Client Company	Targa Midstream Services		
Facility Name	McNeill 12-inch Loopline		
Project Reference	#210011		
EPI Sampler Name	G. Blackburn		

[illegible]

Sampler Relinquished:		Date: 1/18/06		Received By:		Fax Results To Iain Olness - EPI @ 505-394-2601 ASAP REMARKS: Chain of custody requested. Send original reports to Iain Olness - EPI.
Relinquished by: <i>[Signature]</i>		Time: 10:42A		<i>[Signature]</i>		
Relinquished by:		Date		Received By: (lab staff)		
		Time		<i>[Signature]</i>		
Delivered by: <i>[Signature]</i>				Checked By: <i>[Signature]</i>		
				Sample Cool & Intact (Yes) No		



ARDINAL LABORATORIES

PHONE (325) 673-7001 • 2111 BEECHWOOD • ABILENE, TX 79603

PHONE (505) 393-2326 • 101 E. MARLAND • HOBBS, NM 88240

ANALYTICAL RESULTS FOR
ENVIRONMENTAL PLUS, INC.
ATTN: JASON STEGEMOLLER
P.O. BOX 1558
EUNICE, NM 88231
FAX TO: (505) 394-2601

Receiving Date: 01/31/06

Reporting Date: 02/09/06

Project Owner: TARGA MIDSTREAM SERVICES (210011)

Project Name: McNEILL 12-INCH LOOPLINE

Project Location: NOT GIVEN

Sampling Date: 01/31/06

Sample Type: SOIL

Sample Condition: COOL & INTACT

Sample Received By: LB

Analyzed By: HM

LAB NUMBER	SAMPLE ID	SO ₄ (mg/Kg)	Cl (mg/Kg)
ANALYSIS DATE:		02/09/06	02/08/06
H10691-1	A-NESW-6'	622	16
H10691-2	A-NMSW-6'	654	336
H10691-3	A-NMSW-12'	239	16
H10691-4	A-NWSW-6'	105	16
H10691-5	A-NWSW-15'	76	16
H10691-6	A-SESW-6'	579	192
H10691-7	A-SMSW-4'	381	16
H10691-8	A-SMSW-15'	62	16
H10691-9	A-SWSW-6'	143	16
H10691-10	A-SWSW-15'	75	16
Quality Control		22.14	500
True Value QC		25.00	500
% Recovery		88.6	100
Relative Percent Difference		1.8	0.0

METHODS: EPA 600/4-79-020	375.4	SM 4500 ClB
---------------------------	-------	-------------

Note: Analyses performed on 1:4 w:v aqueous extracts.

Jose S. Moreno
Chemist

02-09-06
Date



ARDINAL LABORATORIES

PHONE (325) 673-7001 • 2111 BEECHWOOD • ABILENE, TX 79603

PHONE (505) 393-2326 • 101 E. MARLAND • HOBBS, NM 88240

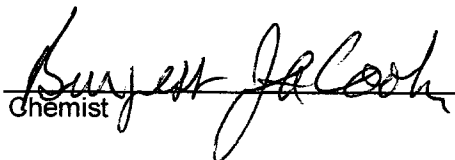
ANALYTICAL RESULTS FOR
ENVIRONMENTAL PLUS, INC.
ATTN: JASON STEGEMOLLER
P.O. BOX 1158
EUNICE, NM 88231
FAX TO: (505) 394-2601

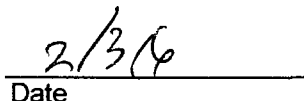
Receiving Date: 01/31/06
Reporting Date: 02/03/06
Project Owner: TARGA MIDSTREAM SERVICES (210011)
Project Name: McNEILL 12-INCH LOOPLINE
Project Location: NOT GIVEN

Sampling Date: 01/31/06
Sample Type: SOIL
Sample Condition: COOL & INTACT
Sample Received By: LB
Analyzed By: BC

LAB NUMBER	SAMPLE ID	GRO	DRO
		(C ₆ -C ₁₀) (mg/Kg)	(>C ₁₀ -C ₂₈) (mg/Kg)
ANALYSIS DATE:		02/02/06	02/02/06
H10691-1	A-NESW-6'	<10.0	<10.0
H10691-2	A-NMSW-6'	<10.0	<10.0
H10691-3	A-NMSW-12'	<10.0	<10.0
H10691-4	A-NWSW-6'	<10.0	<10.0
H10691-5	A-NWSW-15'	<10.0	<10.0
H10691-6	A-SESW-6'	<10.0	<10.0
H10691-7	A-SMSW-4'	<10.0	75.0
H10691-8	A-SMSW-15'	<10.0	<10.0
H10691-9	A-SWSW-6'	<10.0	<10.0
H10691-10	A-SWSW-15'	<10.0	<10.0
Quality Control		793	742
True Value QC		800	800
% Recovery		99.1	92.7
Relative Percent Difference		<0.1	2.3

METHOD: SW-846 8015 M


Chemist


Date

H10691A.XLS

PLEASE NOTE: **Liability and Damages.** Cardinal's liability and client's exclusive remedy for any claim arising, whether based in contract or tort, shall be limited to the amount paid by client for analyses. All claims, including those for negligence and any other cause whatsoever shall be deemed waived unless made in writing and received by Cardinal within thirty (30) days after completion of the applicable service. In no event shall Cardinal be liable for incidental or consequential damages, including, without limitation, business interruptions, loss of use, or loss of profits incurred by client, its subsidiaries, affiliates or successors arising out of or related to the performance of services hereunder by Cardinal, regardless of whether such claim is based upon any of the above-stated reasons or otherwise.



ARDINAL LABORATORIES

PHONE (325) 673-7001 • 2111 BEECHWOOD • ABILENE, TX 79603

PHONE (505) 393-2326 • 101 E. MARLAND • HOBBS, NM 88240

ANALYTICAL RESULTS FOR
ENVIRONMENTAL PLUS, INC
ATTN: JASON STEGEMOLLER
PO BOX 1558
EUNICE, NM 88231
FAX TO: 505-394-2601

Receiving Date: 1/31/06
Reporting Date: 2/6/06
Project Number: 210011
Project Name: TARGA MIDSTREAM SERVICES
Project Location: McNEILL 12-INCH LOOPLINE

Sampling Date: 1/31/06
Sample Type: SOIL
Sample Condition: COOL & INTACT
Sample Received By: LB
Analyzed By: JC

LAB NUMBER	SAMPLE ID	BENZENE (mg/kg)	TOLUENE (mg/kg)	ETHYLBENZENE (mg/kg)	TOTAL XYLENES (mg/kg)
------------	-----------	--------------------	--------------------	-------------------------	-----------------------------

ANALYSIS DATE:		2/4/06	2/4/06	2/4/06	2/4/06
H10691-1	A-NESW-6'	<0.002	<0.002	<0.002	<0.006
H10691-2	A-NMSW-6'	<0.002	<0.002	<0.002	<0.006
H10691-3	A-NMSW-12'	<0.002	<0.002	<0.002	<0.006
H10691-4	A-NWSW-6'	<0.002	<0.002	<0.002	<0.006
H10691-5	A-NWSW-15'	<0.002	<0.002	<0.002	<0.006
H10691-6	A-SESW-6'	<0.002	<0.002	<0.002	<0.006
H10691-7	A-SMSW-4'	0.023	0.010	0.020	0.065
H10691-8	A-SMSW-15'	<0.002	<0.002	<0.002	<0.006
H10691-9	A-SWSW-6'	<0.002	<0.002	<0.002	<0.006
H10691-10	A-SWSW-15'	<0.002	<0.002	<0.002	<0.006

Quality Control	0.097	0.099	0.100	0.276
True Value QC	0.100	0.100	0.100	0.300
% Recovery	97	99	100	92
Relative Percent Difference	5.9	1.0	1.0	2.5

METHODS: EPA - SW 846-8021B, 5030B; Gas Chromatography


Laboratory Manager

2/6/06
Date

PLEASE NOTE: Liability and Damages: Cardinal's liability and client's exclusive remedy for any claim arising, whether based in contract or tort, shall be limited to the amount paid by client for analyses. All claims, including those for negligence and any other cause whatsoever shall be deemed waived unless made in writing and received by Cardinal within thirty (30) days after completion of the applicable service. In no event shall Cardinal be liable for incidental or consequential damages, including, without limitation, business interruptions, loss of use, or loss of profits incurred by client, its subsidiaries, affiliates or successors arising out of or related to the performance of services hereunder by Cardinal, regardless of whether such claim is based upon any of the above-stated reasons or otherwise.

Cardinal Laboratories Inc.

101 East Marland, Hobbs, NM 88240
505-393-2326 Fax 505-393-2476

2111 Beechwood, Abilene, TX 79603
915-673-7001 Fax 915-673-7020

Company Name		Environmental Plus, Inc.		Bill To		ANALYSIS REQUEST																									
EPI Project Manager		Jason Stegemoller																													
Billing Address																															
City, State, Zip																															
EPI Phone#/Fax#		505-394-3481 / 505-394-2601																													
Client Company		Targa Midstream Services																													
Facility Name		McNeill 12-inch Loopline																													
Project Reference		210011																													
EPI Sampler Name		Jason Stegemoller																													
LAB I.D.	SAMPLE I.D.	(G)RAB OR (C)OMP.	# CONTAINERS	GROUND WATER	WASTEWATER	SOIL	CRUDE OIL	SLUDGE	OTHER:	ACID/BASE	ICE/COOL	OTHER	PRESERV.	MATRIX		DATE		TIME		BTX 8021B		CHLORIDES (Cl)		SULFATES (SO ₄)		PH		TCLP		OTHER >>>	
H10691 - 1 A-NESW-6'		G 1				X					X						31-Jan	9:26		X	X										
- 2 A-NMSW-6'		G 1				X					X						31-Jan	9:31		X	X										
- 3 A-NMSW-12'		G 1				X					X						31-Jan	9:36		X	X										
- 4 A-NWSW-6'		G 1				X					X						31-Jan	9:45		X	X										
- 5 A-NWSW-15'		G 1				X					X						31-Jan	9:40		X	X										
- 6 A-SESW-6'		G 1				X					X						31-Jan	10:27		X	X										
- 7 A-SMSW-4'		G 1				X					X						31-Jan	10:20		X	X										
- 8 A-SMSW-15'		G 1				X					X						31-Jan	10:12		X	X										
- 9 A-SWSW-6'		G 1				X					X						31-Jan	9:58		X	X										
H10691 - 10 A-SWSW-15'		G 1				X					X						31-Jan	10:04		X	X										

Fax Results To Jason Stegemoller ASAP 505-394-2601
REMARKS: If TPH is >100 ppm do not analyze remaining analytes (i.e., BTEX, Cl and SO₄). If TPH is <100 ppm analyze for BTEX. If benzene is >10 ppm or BTEX is >50 ppm do not analyze remaining analytes (i.e., Cl and SO₄).

Supplier Relinquished:	Date 1/31/06	Received By:
Jason Stegemoller	Time 4:35P	
Relinquished by:	Date 1/31/06	Received By: (lab staff)
	Time 1:35P	
Delivered by:	Sample Cool & Intact	Checked By:
	(es) No	FB



ARDINAL LABORATORIES

PHONE (325) 673-7001 • 2111 BEECHWOOD • ABILENE, TX 79603

PHONE (505) 393-2326 • 101 E. MARLAND • HOBBS, NM 88240

ANALYTICAL RESULTS FOR
ENVIRONMENTAL PLUS, INC.
ATTN: JASON STEGEMOLLER
P.O. BOX 1558
EUNICE, NM 88231
FAX TO: (505) 394-2601

Receiving Date: 01/31/06

Reporting Date: 02/09/06

Project Owner: TARGA MIDSTREAM SERVICES (210011)

Project Name: McNEILL 12-INCH LOOPLINE

Project Location: NOT GIVEN

Sampling Date: 01/31/06

Sample Type: SOIL

Sample Condition: COOL & INTACT

Sample Received By: LB

Analyzed By: HM

LAB NUMBER	SAMPLE ID	SO ₄ (mg/Kg)	Cl (mg/Kg)
ANALYSIS DATE:		02/07/06	02/07/06
H10690-1	A-WSW-8'	512	16
H10690-2	A-WSW-12'	< 1	16
H10690-3	A-ESW-6'	341	16
H10690-4	A-EF-12'	126	16
H10690-5	A-MF-22'	< 1	16
H10690-6	A-WF-12'	< 1	16
Quality Control		22.6	500
True Value QC		25.0	500
% Recovery		90.4	100
Relative Percent Difference		4.4	2.0

METHODS: EPA 600/4-79-020	375.4	SM 4500 ClB
---------------------------	-------	-------------

Note: Analyses performed on 1:4 w:v aqueous extracts.

Joseph S. Marino
Chemist

02-09-06
Date

H10690



ARDINAL LABORATORIES

PHONE (325) 673-7001 • 2111 BEECHWOOD • ABILENE, TX 79603

PHONE (505) 393-2326 • 101 E. MARLAND • HOBBS, NM 88240

ANALYTICAL RESULTS FOR
ENVIRONMENTAL PLUS, INC
ATTN: JASON STEGEMOLLER
PO BOX 1558
EUNICE, NM 88231
FAX TO: 505-394-2601

Receiving Date: 1/31/06
Reporting Date: 2/7/06
Project Number: 210011
Project Name: TARGA MIDSTREAM SERVICES
Project Location: McNEILL 12-INCH LOOPLINE

Sampling Date: 1/31/06
Sample Type: SOIL
Sample Condition: COOL & INTACT
Sample Received By: LB
Analyzed By: JC

LAB NUMBER	SAMPLE ID	BENZENE (mg/kg)	TOLUENE (mg/kg)	ETHYLBENZENE (mg/kg)	TOTAL XYLENES (mg/kg)
------------	-----------	--------------------	--------------------	-------------------------	-----------------------------

ANALYSIS DATE:		2/6/06	2/6/06	2/6/06	2/6/06
H10690-1	A-WSW-8'	<0.002	<0.002	<0.002	<0.006
H10690-2	A-WSW-12'	<0.002	<0.002	<0.002	<0.006
H10690-3	A-ESW-6'	<0.002	<0.002	<0.002	<0.006
H10690-4	A-EF-12'	<0.002	<0.002	<0.002	<0.006
H10690-5	A-MF-22'	<0.002	<0.002	<0.002	<0.006
H10690-6	A-WF-12'	<0.002	<0.002	<0.002	<0.006

Quality Control	0.111	0.108	0.110	0.323
True Value QC	0.100	0.100	0.100	0.300
% Recovery	111	108	110	108
Relative Percent Difference	4.6	0.0	0.0	0.0

METHODS: EPA - SW 846-8021B, 5030B; Gas Chromatography


Laboratory Manager

2/7/06
Date

PLEASE NOTE: **Liability and Damages.** Cardinal's liability and client's exclusive remedy for any claim arising, whether based in contract or tort, shall be limited to the amount paid by client for analyses. All claims, including those for negligence and any other cause whatsoever shall be deemed waived unless made in writing and received by Cardinal within thirty (30) days after completion of the applicable service. In no event shall Cardinal be liable for incidental or consequential damages, including, without limitation, business interruptions, loss of use, or loss of profits incurred by client, its subsidiaries, affiliates or successors arising out of or related to the performance of services hereunder by Cardinal, regardless of whether such claim is based upon any of the above-stated reasons or otherwise.



PHONE (325) 673-7001 • 2111 BEECHWOOD • ABILENE, TX 79603

PHONE (505) 393-2326 • 101 E. MARLAND • HOBBS, NM 88240

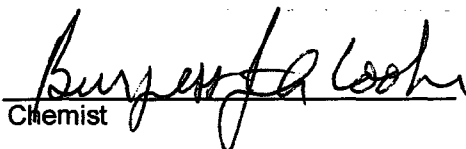
ANALYTICAL RESULTS FOR
ENVIRONMENTAL PLUS, INC.
ATTN: JASON STEGEMOLLER
P.O. BOX 1158
EUNICE, NM 88231

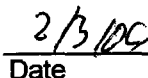
Receiving Date: 01/31/06
Reporting Date: 02/03/06
Project Owner: TARGA MIDSTREAM SERVICES (210011)
Project Name: McNEILL 12-INCH LOOPLINE
Project Location: NOT GIVEN

Sampling Date: 01/31/06
Sample Type: SOIL
Sample Condition: COOL & INTACT
Sample Received By: LB
Analyzed By: BC

LAB NUMBER	SAMPLE ID	GRO	DRO
		(C ₈ -C ₁₀) (mg/Kg)	(>C ₁₀ -C ₂₈) (mg/Kg)
ANALYSIS DATE:		02/02/06	02/02/06
H10690-1	A-WSW-8'	<10.0	32.1
H10690-2	A-WSW-12'	<10.0	<10.0
H10690-3	A-ESW-6'	<10.0	<10.0
H10690-4	A-EF-12'	<10.0	<10.0
H10690-5	A-MF-22'	<10.0	<10.0
H10690-6	A-WF-12'	<10.0	<10.0
Quality Control		793	742
True Value QC		800	800
% Recovery		99.1	92.7
Relative Percent Difference		<0.1	2.3

METHOD: SW-846 8015 M


Chemist


Date

H10690A.XLS

PLEASE NOTE: Liability and Damages. Cardinal's liability and client's exclusive remedy for any claim arising, whether based in contract or tort, shall be limited to the amount paid by client for analyses. All claims, including those for negligence and any other cause whatsoever shall be deemed waived unless made in writing and received by Cardinal within thirty (30) days after completion of the applicable service. In no event shall Cardinal be liable for incidental or consequential damages, including, without limitation, business interruptions, loss of use, or loss of profits incurred by client, its subsidiaries, affiliates or successors arising out of or related to the performance of services hereunder by Cardinal, regardless of whether such claim is based upon any of the above-stated reasons or otherwise.

Cardinal Laboratories Inc.

101 East Marland, Hobbs, NM 88240
505-393-2326 Fax 505-393-2476

2111 Beechwood, Abilene, TX 79603
915-673-7001 Fax 915-673-7020

Company Name		Environmental Plus, Inc.		Bill To		ANALYSIS REQUEST															
EPI Project Manager		Jason Stegemoller																			
Billing Address																					
City, State, Zip																					
EPI Phone#/Fax#		505-394-3481 / 505-394-2601																			
Client Company		Targa Midstream Services																			
Facility Name		McNeill 12-inch Loopline																			
Project Reference		210011																			
EPI Sampler Name		Jason Stegemoller																			
LAB I.D.	SAMPLE I.D.	(G)RAB OR (C)OMP.	# CONTAINERS	GROUND WATER	WASTEWATER	SOIL	CRUDE OIL	SLUDGE	OTHER:	ACID/BASE	ICE/COOL	OTHER	DATE	TIME	BTEX 8021B	TPH 8015M	CHLORIDES (Cl)	SULFATES (SO ₄)	PH	TCLP	OTHER >>>
H10690-1	A-WSW-8'	G	1			X					X		31-Jan	9:52	X	X	X	X			
- 2	A-WSW-12'	G	1			X					X		31-Jan	9:48	X	X	X	X			
- 3	A-ESW-6'	G	1			X					X		31-Jan	10:30	X	X	X	X			
- 4	A-EF-12'	G	1			X					X		31-Jan	9:09	X	X	X	X			
- 5	A-MF-22'	G	1			X					X		31-Jan	9:13	X	X	X	X			
H10690-6	A-WF-12'	G	1			X					X		31-Jan	9:18	X	X	X	X			
7																					
8																					
9																					
10																					

Fax Results To Jason Stegemoller ASAP 505-394-2601

REMARKS: If TPH is >100 ppm do not analyze remaining analytes (i.e., BTEX, Cl and SO₄). If TPH is <100 ppm analyze for BTEX. If benzene is >10 ppm or BTEX is >50 ppm do not analyze remaining analytes (i.e., Cl and SO₄).

Sampler Relinquished: *Jason Stegemoller* Date 1/31/06 Time 4:55P Received By: _____

Relinquished by: _____ Date 1/31/06 Time 16:35 Received By: *Jason Stegemoller*

Delivered by: _____ Sample Cool & Intact (es) No Yes Checked By: *JB*



PHONE (325) 673-7001 • 2111 BEECHWOOD • ABILENE, TX 79603

PHONE (505) 393-2326 • 101 E. MARLAND • HOBBS, NM 88240

ANALYTICAL RESULTS FOR
ENVIRONMENTAL PLUS, INC.
ATTN: JASON STEGEMOLLER
P.O. BOX 1558
EUNICE, NM 88231
FAX TO: (505) 394-2601

Receiving Date: 01/31/06

Reporting Date: 02/09/06

Project Owner: TARGA MIDSTREAM SERVICES (210011)

Project Name: McNEILL 12-INCH LOOPLINE

Project Location: NOT GIVEN

Sampling Date: 01/31/06

Sample Type: SOIL

Sample Condition: COOL & INTACT

Sample Received By: LB

Analyzed By: HM

LAB NUMBER	SAMPLE ID	SO ₄ (mg/Kg)	Cl (mg/Kg)
ANALYSIS DATE:		02/06/06	02/06/06
H10689-1	B-NSW-3'	182	80
H10689-2	B-SSW-3'	394	80
H10689-3	B-WSW-3' A	163	16
H10689-4	B-NSW-3' B	394	240
H10689-5	B-EF-6'	180	32
Quality Control		22.6	510
True Value QC		25.0	500
% Recovery		90.4	102
Relative Percent Difference		4.4	2.0

METHODS: EPA 600/4-79-020	375.4	SM 4500 ClB
---------------------------	-------	-------------

Note: Analyses performed on 1:4 w:v aqueous extracts.

Hope S. Moreno
Chemist

02-09-06
Date

H10689



ARDINAL LABORATORIES

PHONE (325) 673-7001 • 2111 BEECHWOOD • ABILENE, TX 79603

PHONE (505) 393-2326 • 101 E. MARLAND • HOBBS, NM 88240

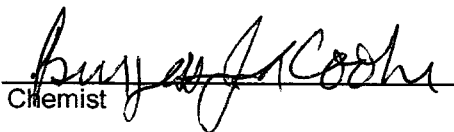
ANALYTICAL RESULTS FOR
ENVIRONMENTAL PLUS, INC.
ATTN: JASON STEGEMOLLER
P.O. BOX 1158
EUNICE, NM 88231

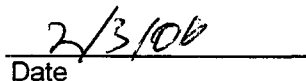
Receiving Date: 01/31/06
Reporting Date: 02/03/06
Project Owner: TARGA MIDSTREAM SERVICES (210011)
Project Name: McNEILL 12-INCH LOOPLINE
Project Location: NOT GIVEN

Sampling Date: 01/31/06
Sample Type: SOIL
Sample Condition: COOL & INTACT
Sample Received By: LB
Analyzed By: BC

LAB NUMBER	SAMPLE ID	GRO	DRO
		(C ₆ -C ₁₀) (mg/Kg)	(>C ₁₀ -C ₂₈) (mg/Kg)
ANALYSIS DATE:		02/01/06	02/01/06
H10689-1	B-NSW-3'	<10.0	<10.0
H10689-2	B-SSW-3'	<10.0	<10.0
H10689-3	B-WSW-3' A	<10.0	<10.0
H10689-4	B-NSW-3' B	<10.0	<10.0
H10689-5	B-EF-6'	<10.0	<10.0
H10689-6	B-SESW-3'	617	9800
Quality Control		793	742
True Value QC		800	800
% Recovery		99.1	92.7
Relative Percent Difference		<0.1	2.3

METHOD: SW-846 8015 M


Chemist


Date

H10689A.XLS

PLEASE NOTE: **Liability and Damages.** Cardinal's liability and client's exclusive remedy for any claim arising, whether based in contract or tort, shall be limited to the amount paid by client for analyses. All claims, including those for negligence and any other cause whatsoever shall be deemed waived unless made in writing and received by Cardinal within thirty (30) days after completion of the applicable service. In no event shall Cardinal be liable for incidental or consequential damages, including, without limitation, business interruptions, loss of use, or loss of profits incurred by client, its subsidiaries, affiliates or successors arising out of or related to the performance of services hereunder by Cardinal, regardless of whether such claim is based upon any of the above-stated reasons or otherwise.



PHONE (325) 673-7001 • 2111 BEECHWOOD • ABILENE, TX 79603

PHONE (505) 393-2326 • 101 E. MARLAND • HOBBS, NM 88240

ANALYTICAL RESULTS FOR
ENVIRONMENTAL PLUS, INC
ATTN: JASON STEGEMOLLER
PO BOX 1558
EUNICE, NM 88231
FAX TO: 505-394-2601

Receiving Date: 1/31/06
Reporting Date: 2/6/06
Project Number: 210011
Project Name: TARGA MIDSTREAM SERVICES
Project Location: McNEILL 12-INCH LOOPLINE

Sampling Date: 1/31/06
Sample Type: SOIL
Sample Condition: COOL & INTACT
Sample Received By: LB
Analyzed By: JC

LAB NUMBER	SAMPLE ID	TOTAL			
		BENZENE (mg/kg)	TOLUENE (mg/kg)	ETHYLBENZENE (mg/kg)	XYLENES (mg/kg)
ANALYSIS DATE:		2/3/06	2/3/06	2/3/06	2/3/06
H10689-1	B-NSW-3'	<0.002	<0.002	<0.002	<0.006
H10689-2	B-SSW-3'	<0.002	<0.002	<0.002	<0.006
H10689-3	B-WSW-3'A	<0.002	<0.002	<0.002	<0.006
H10689-4	B-NSW-3'B	<0.002	<0.002	<0.002	<0.006
H10689-5	B-EF-6'	<0.002	<0.002	<0.002	<0.006
Quality Control		0.105	0.101	0.102	0.277
True Value QC		0.100	0.100	0.100	0.300
% Recovery		105	101	102	92.3
Relative Percent Difference		7.1	1.7	0.9	4.7

METHODS: EPA - SW 846-8021B, 5030B; Gas Chromatography


Laboratory Manager

2/6/06
Date

PLEASE NOTE: Liability and Damages. Cardinal's liability and client's exclusive remedy for any claim arising, whether based in contract or tort, shall be limited to the amount paid by client for analyses. All claims, including those for negligence and any other cause whatsoever shall be deemed waived unless made in writing and received by Cardinal within thirty (30) days after completion of the applicable service. In no event shall Cardinal be liable for incidental or consequential damages, including, without limitation, business interruptions, loss of use, or loss of profits incurred by client, its subsidiaries, affiliates or successors arising out of or related to the performance of services hereunder by Cardinal, regardless of whether such claim is based upon any of the above-stated reasons or otherwise.

101 East Marland, Hobbs, NM 88240
505-393-2326 Fax 505-393-2476

Fax Results To Jason Stegemoller ASAP 505 394-2601



ARDINAL LABORATORIES

PHONE (325) 673-7001 • 2111 BEECHWOOD • ABILENE, TX 79603

PHONE (505) 393-2326 • 101 E. MARLAND • HOBBS, NM 88240

ANALYTICAL RESULTS FOR
ENVIRONMENTAL PLUS, INC
ATTN: JASON STEGEMOLLER
PO BOX 1558
EUNICE, NM 88231
FAX TO: 505-394-2601

Receiving Date: 1/31/06
Reporting Date: 2/6/06
Project Number: 210011
Project Name: TARGA MIDSTREAM SERVICES
Project Location: McNEILL 12-INCH LOOPLINE

Sampling Date: 1/31/06
Sample Type: SOIL
Sample Condition: COOL & INTACT
Sample Received By: LB
Analyzed By: JC

LAB NUMBER	SAMPLE ID	BENZENE (mg/kg)	TOLUENE (mg/kg)	ETHYLBENZENE (mg/kg)	TOTAL XYLENES (mg/kg)
ANALYSIS DATE:		2/3/06	2/3/06	2/3/06	2/3/06
H10688-1	C-NSW-8'	<0.002	<0.002	<0.002	<0.006
H10688-2	C-ESW-8'	<0.002	<0.002	<0.002	<0.006
H10688-3	C-WSW-5'	<0.002	<0.002	<0.002	<0.006
H10688-4	C-SSW-5'	<0.002	<0.002	<0.002	<0.006
H10688-5	C-EF-10'	<0.002	<0.002	<0.002	<0.006

Quality Control	0.105	0.101	0.102	0.277
True Value QC	0.100	0.100	0.100	0.300
% Recovery	105	101	102	92.3
Relative Percent Difference	7.1	1.7	0.9	4.7

METHODS: EPA - SW 846-8021B, 5030B; Gas Chromatography


Laboratory Manager

2/6/06
Date

PLEASE NOTE: Liability and Damages. Cardinal's liability and client's exclusive remedy for any claim arising, whether based in contract or tort, shall be limited to the amount paid by client for analyses. All claims, including those for negligence and any other cause whatsoever shall be deemed waived unless made in writing and received by Cardinal within thirty (30) days after completion of the applicable service. In no event shall Cardinal be liable for incidental or consequential damages, including, without limitation, business interruptions, loss of use, or loss of profits incurred by client, its subsidiaries, affiliates or successors arising out of or related to the performance of services hereunder by Cardinal, regardless of whether such claim is based upon any of the above-stated reasons or otherwise.



CARDINAL LABORATORIES

PHONE (325) 673-7001 • 2111 BEECHWOOD • ABILENE, TX 79603

PHONE (505) 393-2326 • 101 E. MARLAND • HOBBS, NM 88240

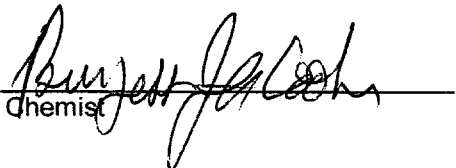
ANALYTICAL RESULTS FOR
ENVIRONMENTAL PLUS, INC.
ATTN: JASON STEGEMOLLER
P.O. BOX 1158
EUNICE, NM 88231
FAX TO: (505) 394-2601

Receiving Date: 01/31/06
Reporting Date: 02/03/06
Project Owner: TARGA MIDSTREAM SERVICES (210011)
Project Name: McNEILL 12-INCH LOOPLINE
Project Location: NOT GIVEN

Sampling Date: 01/31/06
Sample Type: SOIL
Sample Condition: COOL & INTACT
Sample Received By: LB
Analyzed By: BC

LAB NUMBER	SAMPLE ID	GRO	DRO
		(C ₆ -C ₁₀) (mg/Kg)	(>C ₁₀ -C ₂₈) (mg/Kg)
ANALYSIS DATE:		02/01/06	02/01/06
H10688-1	C-NSW-8'	<10.0	<10.0
H10688-2	C-ESW-8'	<10.0	<10.0
H10688-3	C-WSW-5'	<10.0	<10.0
H10688-4	C-SSW-5'	<10.0	<10.0
H10688-5	C-EF-10'	<10.0	<10.0
Quality Control		801	754
True Value QC		800	800
% Recovery		100	94.2
Relative Percent Difference		0.9	5.7

METHOD: SW-846 8015 M


Chemist

2/3/06
Date

H10688A.XLS

PLEASE NOTE: **Liability and Damages.** Cardinal's liability and client's exclusive remedy for any claim arising, whether based in contract or tort, shall be limited to the amount paid by client for analyses. All claims, including those for negligence and any other cause whatsoever shall be deemed waived unless made in writing and received by Cardinal within thirty (30) days after completion of the applicable service. In no event shall Cardinal be liable for incidental or consequential damages, including, without limitation, business interruptions, loss of use, or loss of profits incurred by client, its subsidiaries, affiliates or successors arising out of or related to the performance of services hereunder by Cardinal, regardless of whether such claim is based upon any of the above-stated reasons or otherwise.



PHONE (325) 673-7001 • 2111 BEECHWOOD • ABILENE, TX 79603

PHONE (505) 393-2326 • 101 E. MARLAND • HOBBS, NM 88240

ANALYTICAL RESULTS FOR
ENVIRONMENTAL PLUS, INC.
ATTN: JASON STEGEMOLLER
P.O. BOX 1558
EUNICE, NM 88231
FAX TO: (505) 394-2601

Receiving Date: 01/31/06

Reporting Date: 02/07/06

Project Owner: TARGA MIDSTREAM SERVICES (210011)

Project Name: McNEILL 12-INCH LOOPLINE

Project Location: NOT GIVEN

Sampling Date: 01/31/06

Sample Type: SOIL

Sample Condition: COOL & INTACT

Sample Received By: LB

Analyzed By: HM

LAB NUMBER	SAMPLE ID	SO ₄ (mg/Kg)	Cl (mg/Kg)
ANALYSIS DATE:		02/06/06	02/06/06
H10688-1	C-NSW-8'	257	16
H10688-2	C-ESW-8'	63	16
H10688-3	C-WSW-5'	713	16
H10688-4	C-SSW-5'	1324	48
H10688-5	C-EF-10'	459	32
Quality Control		22.6	510
True Value QC		25.0	500
% Recovery		90.4	102
Relative Percent Difference		4.4	2.0

METHODS: EPA 600/4-79-020

375.4

SM 4500 ClB

Note: Analyses performed on 1:4 w:v aqueous extracts.

Jose S. Medina
Chemist

02-09-06
Date

H10688

Cardinal Laboratories Inc.

101 East Marland, Hobbs, NM 88240
505-393-2326 Fax 505-393-2476

2111 Beechwood, Abilene, TX 79603
915-673-7001 Fax 915-673-7020

Company Name		Environmental Plus, Inc.		Bill To		ANALYSIS REQUEST															
EPI Project Manager		Jason Stegemoller																			
Billing Address																					
City, State, Zip																					
EPI Phone#/Fax#		505-394-3481 / 505-394-2601																			
Client Company		Targa Midstream Services																			
Facility Name		McNeill 12-inch Loopline																			
Project Reference		210011																			
EPI Sampler Name		Jason Stegemoller																			
LAB I.D.	SAMPLE I.D.	(G)RAB OR (C)OMP.	# CONTAINERS	GROUND WATER	WASTEWATER	SOIL	CRUDE OIL	SLUDGE	OTHER:	ACID/BASE	ICE/COOL	OTHER	DATE	TIME	BTEX 8021B	TPH 8015M	CHLORIDES (Cl)	SULFATES (SO ₄)	PH	TCLP	OTHER >>>
1-10688-1	C-NSW-8'	G 1				X					X		31-Jan	11:25	X	X	X	X			
2-10688-2	C-ESW-8'	G 1				X					X		31-Jan	11:29	X	X	X	X			
3-10688-3	C-WSW-5'	G 1				X					X		31-Jan	11:40	X	X	X	X			
4-10688-4	C-SSW-5'	G 1				X					X		31-Jan	11:20	X	X	X	X			
5-10688-5	C-EF-10'	G 1				X					X		31-Jan	11:32	X	X	X	X			
6																					
7																					
8																					
9																					
10																					

Fax Results To Jason Stegemoller ASAP 505-394-2601
REMARKS: If TPH is >100 ppm do not analyze remaining analytes (i.e., BTEX, Cl and SO₄). If TPH is <100 ppm analyze for BTEX. If benzene is >10 ppm or BTEX is >50 ppm do not analyze remaining analytes (i.e., Cl and SO₄).

Sample Relinquished:	Date 4/3/06	Received By:
Relinquished by: Jason Stegemoller	Time 4:35P	
Relinquished by:	Date 4/3/06	Received By: (lab staff)
	Time 16:35	
Delivered by:	Sample Cool & Intact	Checked By:
	Yes No	Yes No
		Yes No



PHONE (325) 673-7001 • 2111 BEECHWOOD • ABILENE, TX 79603

PHONE (505) 393-2326 • 101 E. MARLAND • HOBBS, NM 88240

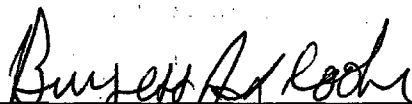
ANALYTICAL RESULTS FOR
ENVIRONMENTAL PLUS, INC.
ATTN: JASON STEGEMOLLER
P.O. BOX 1558
EUNICE, NM 88231
FAX TO: (505) 394-2601

Receiving Date: 03/02/06
Reporting Date: 03/08/06
Project Owner: TARGA MIDSTREAM SERVICES (210011)
Project Name: McNEILL 12-INCH LOOPLINE
Project Location: NOT GIVEN

Sampling Date: 02/28/06 & 03/01/06
Sample Type: SOIL
Sample Condition: COOL & INTACT
Sample Received By: HM
Analyzed By: BC

LAB NO.	SAMPLE ID	GRO (C ₆ -C ₁₀) (mg/Kg)	DRO (>C ₁₀ -C ₂₈) (mg/Kg)	BENZENE (mg/Kg)	TOLUENE (mg/Kg)	ETHYL BENZENE (mg/Kg)	TOTAL XYLENES (mg/Kg)
ANALYSIS DATE:		03/06/06	03/06/06	03/07/06	03/07/06	03/07/06	03/07/06
H10844-1	B-SESW-3' A	<10.0	<10.0	<0.005	<0.005	<0.005	<0.015
H10844-2	C-WSW-5' A	<10.0	<10.0	<0.005	<0.005	<0.005	<0.015
H10844-3	C-SSW-5' A	<10.0	<10.0	<0.005	<0.005	<0.005	<0.015
Quality Control		780	781	0.097	0.097	0.091	0.267
True Value QC		800	800	0.100	0.100	0.100	0.300
% Recovery		97.5	97.6	96.7	96.7	91.3	88.9
Relative Percent Difference		1.3	6.8	0.9	3.5	0.3	1.5

METHODS: TPH GRO & DRO - EPA SW-846 8015 M; BTEX - SW-846 8260.


Burgess J. A. Cooke, Ph. D.

3/8/06
Date

H10844A.XLS

PLEASE NOTE: Liability and Damages. Cardinal's liability and client's exclusive remedy for any claim arising, whether based in contract or tort, shall be limited to the amount paid by client for analyses. All claims, including those for negligence and any other cause whatsoever shall be deemed waived unless made in writing and received by Cardinal within thirty (30) days after completion of the applicable service. In no event shall Cardinal be liable for incidental or consequential damages, including, without limitation, business interruptions, loss of use, or loss of profits incurred by client, its subsidiaries, affiliates or successors arising out of or related to the performance of services hereunder by Cardinal, regardless of whether such claim is based upon any of the above-stated reasons or otherwise.



ARDINAL LABORATORIES

PHONE (325) 673-7001 • 2111 BEECHWOOD • ABILENE, TX 79603

PHONE (505) 393-2326 • 101 E. MARLAND • HOBBS, NM 88240

ANALYTICAL RESULTS FOR
ENVIRONMENTAL PLUS, INC.
ATTN: JASON STEGEMOLLER
P.O. BOX 1558
EUNICE, NM 88231
FAX TO: (505) 394-2601

Receiving Date: 03/02/06
Reporting Date: 03/07/06
Project Owner: TARGA MIDSTREAM SERVICES (210011)
Project Name: McNEILL 12-INCH LOOPLINE
Project Location: NOT GIVEN

Sampling Date: 02/28/06, 03/01/06
Sample Type: SOIL
Sample Condition: COOL & INTACT
Sample Received By: HM
Analyzed By: AB/HM

LAB NUMBER	SAMPLE ID	SO ₄ (mg/Kg)	Cl (mg/Kg)
ANALYSIS DATE:		03/07/06	03/03/06
H10844-1	B-SESW-3' A	115	16
H10844-2	C-WSW-5' A	566	16
H10844-3	C-SSW-5' A	488	384
Quality Control		25.3	510
True Value QC		25.0	500
% Recovery		101.0	102
Relative Percent Difference		2.0	0.0

METHODS: EPA 600/4-79-020	375.4	SM 4500 ClB
---------------------------	-------	-------------

NOTE: Analyses performed on 1:4 w:v aqueous extracts.


Chemist

03-08-06
Date

PLEASE NOTE: **Liability and Damages.** Cardinal's liability and client's exclusive remedy for any claim arising, whether based in contract or tort, shall be limited to the amount paid by client for analyses. All claims, including those for negligence and any other cause whatsoever shall be deemed waived unless made in writing and received by Cardinal within thirty (30) days after completion of the applicable service. **H10844** Cardinal shall be liable for incidental or consequential damages, including, without limitation, business interruptions, loss of use, or loss of profits incurred by client, its subsidiaries, affiliates or successors arising out of or related to the performance of services hereunder by Cardinal, regardless of whether such claim is based upon any of the above-stated reasons or otherwise.

2111 Beechwood, Abilene, TX 79603
915-673-7001 Fax 915-673-7020

Bill

ANALYSIS REQUEST

EPI Sampler Name	Jason Stegemoller
------------------	-------------------

Targa Midstream Services
Attn: Roger Holland
P.O. Box 1929
Eunice, NM 88231

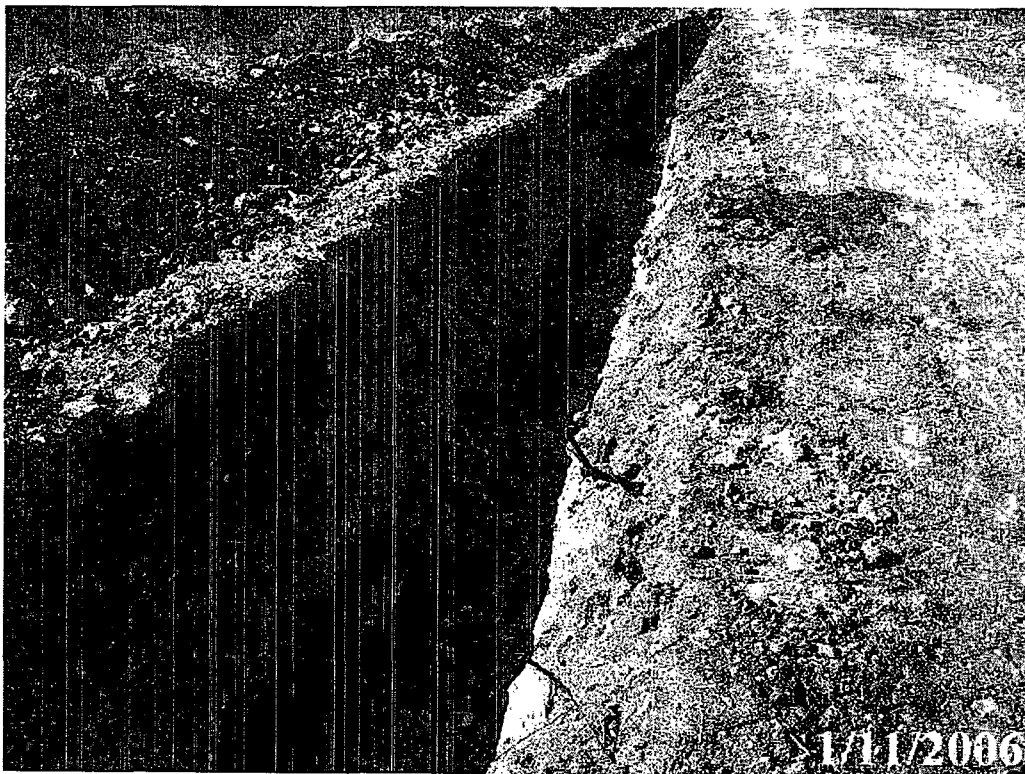
[illegible]

APPENDIX II

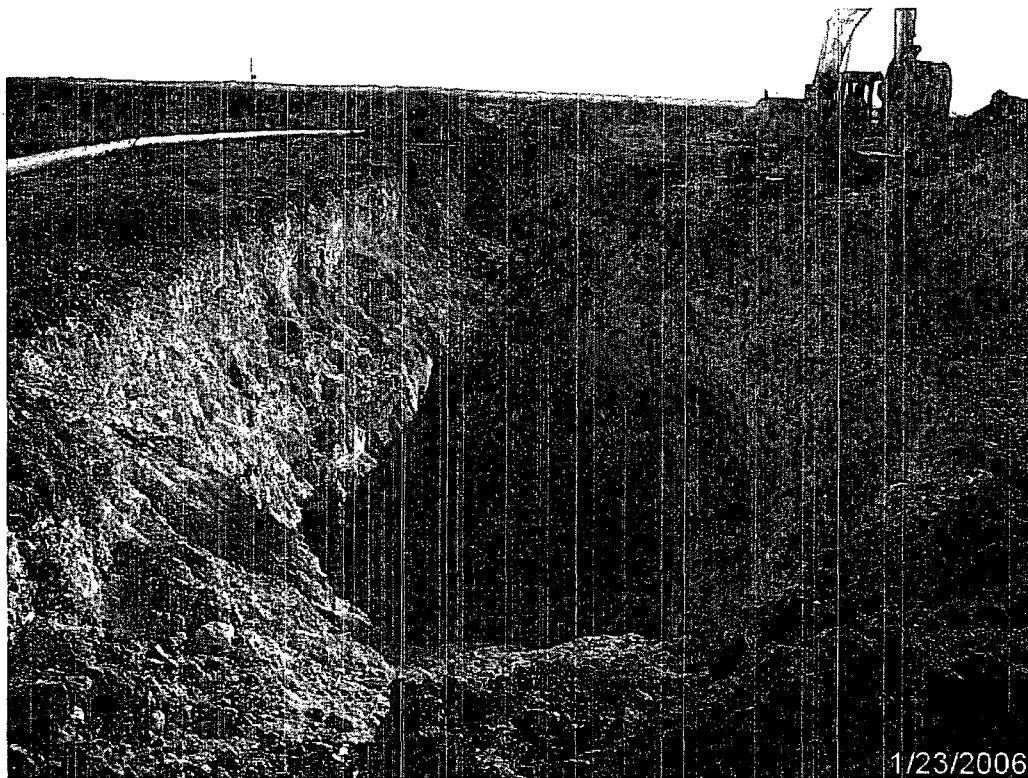
PROJECT PHOTOGRAPHS



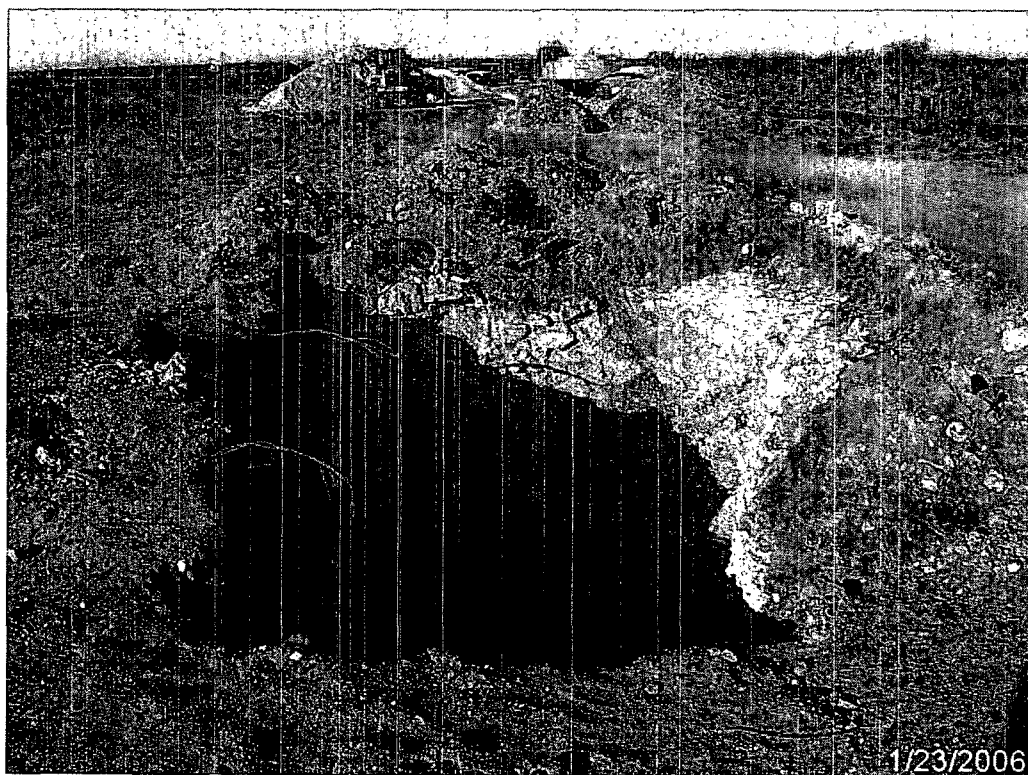
Photograph #1 – Looking southerly across western release area.



Photograph #2 – Looking east across eastern release area.



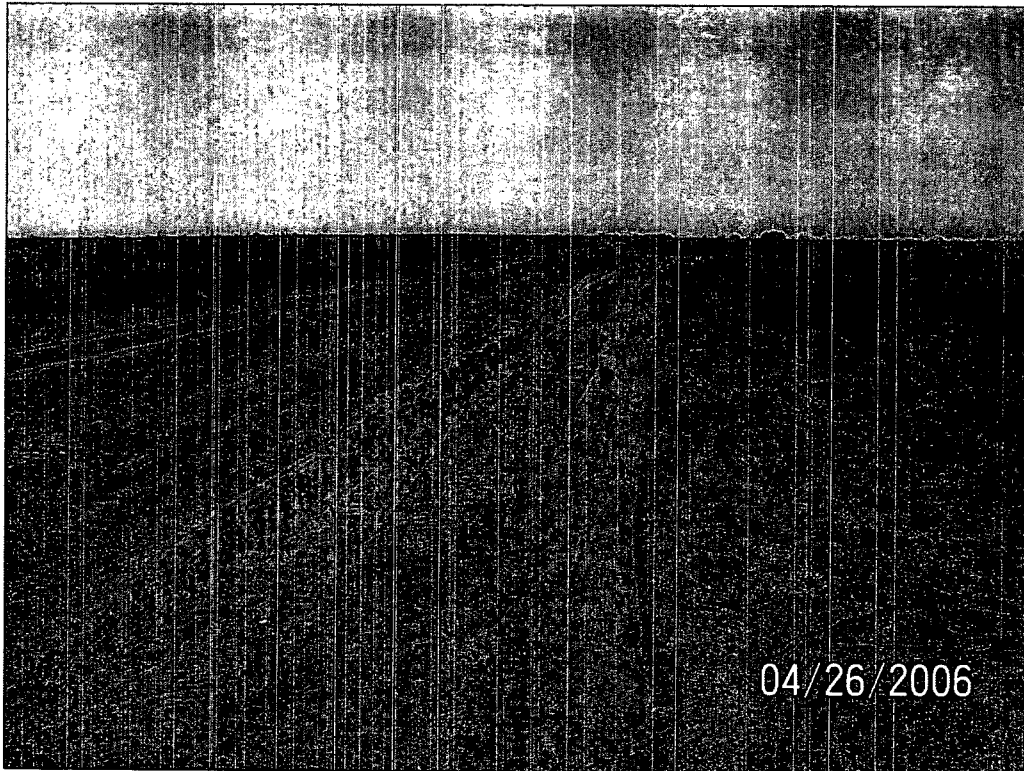
Photograph #3 – Looking easterly across western excavation (Excavation A).



Photograph #4 – Middle excavation (Excavation B), looking westerly.



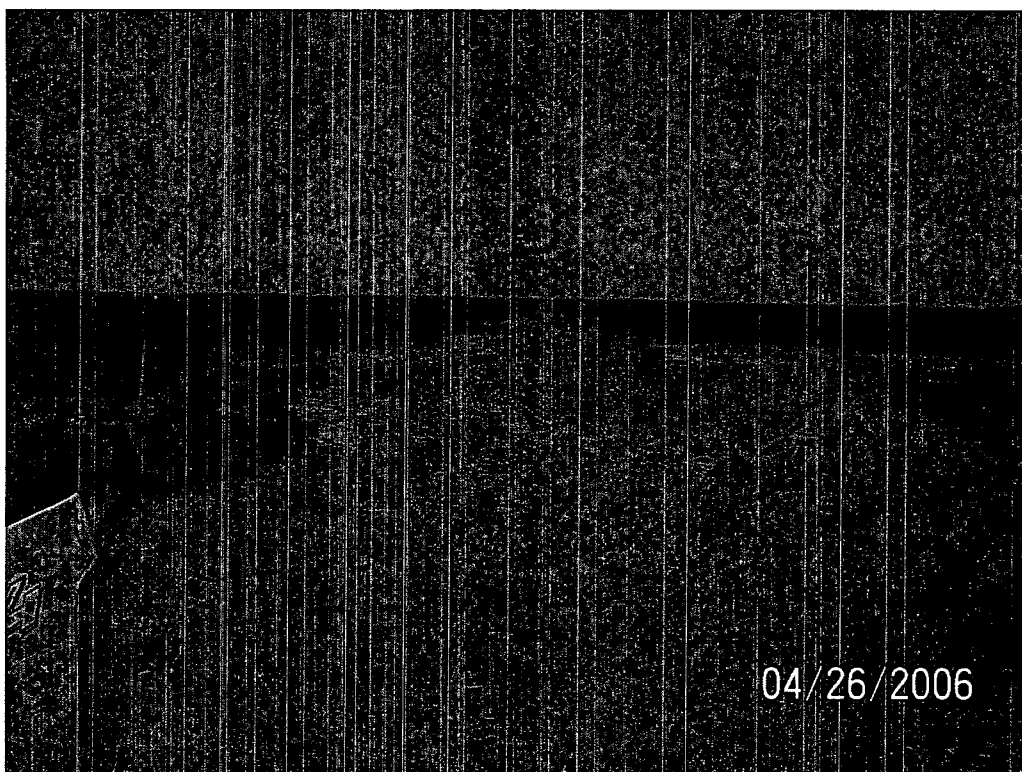
Photograph #5 – Eastern excavation (Excavation C) looking westerly.



Photograph #6 – Site graded and contoured, looking westerly.



Photograph #7 – Site graded and contoured, looking west-southwesterly.



Photograph #8 – Site graded and contoured, looking easterly.

APPENDIX III

FINAL

NMOCD C-141 FORM

District I
1625 N. French Dr., Hobbs, NM 88240
District II
1301 W. Grand Avenue, Artesia, NM 88210
District III
1000 Rio Brazos Road, Aztec, NM 87410
District IV
1220 S. St. Francis Dr., Santa Fe, NM 87505

State of New Mexico
Energy Minerals and Natural Resources

Oil Conservation Division
1220 South St. Francis Dr.
Santa Fe, NM 87505

Form C-141
Revised March 17, 1999

Submit 2 Copies to appropriate
District Office in accordance
with Rule 116 on back
side of form

Release Notification and Corrective Action

OPERATOR

☐ Initial Report ☒ Final Report

Name of Company: Targa Resources		Contact: Roger Holland	
Address P.O. Box 1929, Eunice, New Mexico 88231		Telephone No. 505-631-7094	
Facility Name McNeill 12" Loopline (Ref. # 210011)		Facility Type 12 inch steel pipeline	
Surface Owner: Paige McNeill		Mineral Owner	Company No. 024650

LOCATION OF RELEASE

Unit Letter E	Section 11	Township T21S	Range R37E	Feet from the	North/South Line	Feet from the	East/West Line	County: Lea Lat. 32° 29' 38.54"N Lon. 103° 08' 19.07"W
-------------------------	----------------------	-------------------------	----------------------	----------------------	-------------------------	----------------------	-----------------------	---

NATURE OF RELEASE

Type of Release Natural Gas and Natural Gas Pipeline Fluids		Volume of Release Unknown	Volume Recovered None
Source of Release 12 inch steel pipeline with a normal daily flow rate of 2,000 mcf and normal operating pressure of 12 p.s.i.		Date and Hour of Occurrence Historical, Unknown	Date and Hour of Discovery
Was Immediate Notice Given? <input type="checkbox"/> Yes <input checked="" type="checkbox"/> No <input type="checkbox"/> Not Required		If YES, To Whom?	
By Whom?		Date and Hour	
Was a Watercourse Reached? <input type="checkbox"/> Yes <input checked="" type="checkbox"/> No		If YES, Volume Impacting the Watercourse. NA	
If a Watercourse was Impacted, Describe Fully.* NA			
Describe Cause of Problem and Remedial Action Taken.* 12 inch steel pipeline. Release was due to corrosion. The pipeline section was removed and replaced.			
Describe Area Affected and Cleanup Action Taken.* Initial Release Area: Total of ~900-sq. ft. Final excavated area totaled approximately 4,520-sq. ft. to a maximum depth of 22-ft bgs. Approximately 2,770-yd ³ of soil impacted above the NMOCD Remedial Guidelines was excavated Hungry Horse, LLC and transported to the Environmental Plus, Inc. Landfarm for treatment. An equivalent amount of clean soil was purchased from the landowner and utilized to backfill the excavation. Remedial Goals: TPH 8015m = 100 mg/Kg, Benzene = 10 mg/Kg, and BTEX = 50 mg/Kg.			
I hereby certify that the information given above is true and complete to the best of my knowledge and understand that pursuant to NMOCD rules and regulations all operators are required to report and/or file certain release notifications and perform corrective actions for releases which may endanger public health or the environment. The acceptance of a C-141 report by the NMOCD marked as "Final Report" does not relieve the operator of liability should their operations have failed to adequately investigate and remediate contamination that pose a threat to ground water, surface water, human health or the environment. In addition, NMOCD acceptance of a C-141 report does not relieve the operator of responsibility for compliance with any other federal, state, or local laws and/or regulations.			
Signature: 		OIL CONSERVATION DIVISION	
Printed Name: Roger Holland		Approved by District Supervisor: 	
E-mail Address: rholland@targaresources.com		Approval Date: 7.19.06	Expiration Date:
Title: Field Tech		Conditions of Approval:	Attached <input type="checkbox"/>
Date: 7/13/06 Phone: 505-631-7094			

* Attach Additional Sheets If Necessary