

9

OIL CONSERVATION DIVISION
RECEIVED
HAL J. RASMUSSEN OPERATING, INC.
SIX DESTA DRIVE, SUITE 5850
MIDLAND, TEXAS 79705
(915) 687-1664
30 FEB 12 AM 9 35

February 5, 1990

Mr. William J. LeMay, Director
New Mexico Oil Conservation Division
P. O. Box 2088
Sante Fe, New Mexico 87501

RE: Administrative Approval of an Unorthodox Well Location
State "A" a/c 3 # 8
Jalmat Gas Pool
Lea County, New Mexico

Dear Mr. LeMay,

Hal J. Rasmussen Operating Inc. respectfully requests to administratively approve the State "A" a/c 3 # 8 as an unorthodox well location in the Jalmat Gas Pool, located 660 FEL and 660 ft FSL of Section 10, T23S R36E, Lea County, New Mexico. The State "A" a/c 3 # 8 was a previously approved recompletion in the Jalmat Gas Pool. Due to Division Order No. R-9073 dated December 14, 1989, the above well location is now included in a 320 acre proration unit comprising the W 1/2 of section 10 T23S R36E and is now classified as unorthodox. Hal J. Rasmussen Operating Inc. also requests administrative approval to simultaneously dedicate the 320 acre tract (W 1/2 of section 10 T23S R36E) to well numbers 1,2 and 8 located in unit letters A,J and P respectively.

The offset operators have been notified of this application by certified mail. Copies of the return receipts will be forwarded when received. Attached is a plat showing the location of the State "A" a/c 3 # 8, and the proration unit the well will be included in. A list of offset operators has also been attached.

If you need any further information regarding this request, please call me at (915) 687-1664.

Thank-you for your consideration.

Sincerely,


Jay Cherski

CC: New Mexico Oil Conservation Division District 1 Office
P.O. Box 1980
Hobbs, New Mexico 88240

Submit to Appropriate
District Office
State Lease - 4 copies
Fee Lease - 3 copies

State of New Mexico
Energy, Minerals and Natural Resources Department

Form C-102
Revised 1-1-89

OIL CONSERVATION DIVISION
P.O. Box 2088
Santa Fe, New Mexico 87504-2088

DISTRICT I
P.O. Box 1980, Hobbs, NM 88240

DISTRICT II
P.O. Drawer DD, Artesia, NM 88210

DISTRICT III
1000 Rio Brazos Rd., Aztec, NM 87410

WELL LOCATION AND ACREAGE DEDICATION PLAT

All Distances must be from the outer boundaries of the section

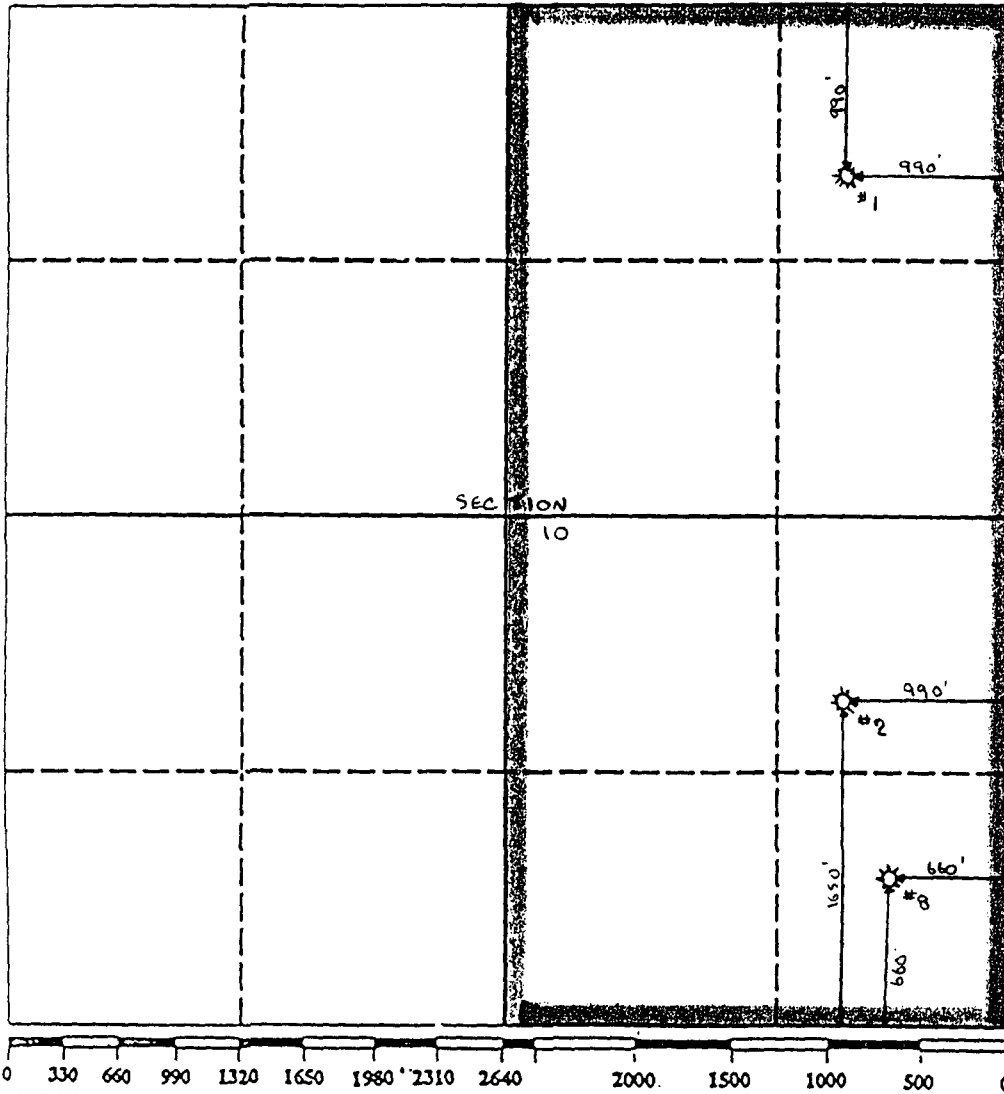
Operator Hal J. Rasmussen Operating, Inc.			Lease State A A/C 3		Well No. 8
Unit Letter P	Section 10	Township 23 S	Range 36E	County Lea	
Actual Footage Location of Well: 660 feet from the SOUTH line and 660 feet from the EAST line					
Ground level Elev.	Producing Formation TANSHU-YATES	Pool Jalmat-TNSL-YTS-7R		Dedicated Acreage: 320 Acres	

1. Outline the acreage dedicated to the subject well by colored pencil or hatchure marks on the plat below.
2. If more than one lease is dedicated to the well, outline each and identify the ownership thereof (both as to working interest and royalty).
3. If more than one lease of different ownership is dedicated to the well, have the interest of all owners been consolidated by communitization, unitization, force-pooling, etc.?

☐ Yes ☐ No If answer is "yes" type of consolidation _____

If answer is "no" list the owners and tract descriptions which have actually been consolidated. (Use reverse side of this form if necessary.) _____

No allowable will be assigned to the well until all interests have been consolidated (by communitization, unitization, forced-pooling, or otherwise) or until a non-standard unit, eliminating such interest, has been approved by the Division.



OPERATOR CERTIFICATION

I hereby certify that the information contained herein is true and complete to the best of my knowledge and belief.

Signature
Jay D. Cherski

Printed Name
Jay D. Cherski

Position
Agent

Company
Hal J. Rasmussen Operating, Inc.

Date
2/5/90

SURVEYOR CERTIFICATION

I hereby certify that the well location shown on this plat was plotted from field notes of actual surveys made by me or under my supervision, and that the same is true and correct to the best of my knowledge and belief.

Date Surveyed

Signature & Seal of
Professional Surveyor

Certificate No.