



STATE OF NEW MEXICO  
ENERGY, MINERALS AND NATURAL RESOURCES DEPARTMENT  
OIL CONSERVATION DIVISION  
HOBBS DISTRICT OFFICE

1625 N. FRENCH DRIVE  
HOBBS, NM 88240

November 3, 2000

Doyle Hartman

P O Box 10426

Midland, TX 79702

**RE: CANCELLATION OF INTENT TO DRILL**

Carter-Eaves NCT-A #3-N

06/24s-37e, 512/S & 1923/W

API #30-025-31280

Gentlemen:

Twelve months or more have elapsed since Division Form C-101, Notice of Intention to drill, for the subject well was approved. To date no progress reports, Forms C-103, have been received. Therefore, approval of your permit to drill this well has now expired and no drilling operations are to be initiated without further notice to and approval by the Oil Conservation Division. Pending such approval, this location will be considered as an abandoned location.

Very truly yours,

OIL CONSERVATION DIVISION

Chris Williams  
District I, Supervisor

CW:dp

cc: OCD Santa Fe  
BLM  
State Land Office  
OCD Hobbs well file

79240

Submit to Appropriate  
District Office  
State Lease - 6 copies  
Fee Lease - 5 copies

State of New Mexico  
Energy, Minerals and Natural Resources Department

Form C-101  
Revised 1-1-89

OIL CONSERVATION DIVISION  
P.O. Box 2088  
Santa Fe, New Mexico 87504-2088

DISTRICT I  
P.O. Box 1980, Hobbs, NM 88240

DISTRICT II  
P.O. Drawer DD, Artesia, NM 88210

DISTRICT III  
1000 Rio Brazos Rd., Aztec, NM 87410

API NO. (assigned by OCD on New Wells)  
30-025-31280

5. Indicate Type of Lease  
STATE ☐ FEE ☒

6. State Oil & Gas Lease No.

APPLICATION FOR PERMIT TO DRILL, DEEPEN, OR PLUG BACK

a. Type of Work:

DRILL ☒ RE-ENTER ☐ DEEPEN ☐ PLUG BACK ☐

b. Type of Well:

OIL WELL ☐ GAS WELL ☒ OTHER ☐

SINGLE ZONE ☒

MULTIPLE ZONE ☐

c. Name of Operator

Doyle Hartman

d. Address of Operator

500 North Main (79701) P. O. Box 10426, Midland, TX 79702

7. Lease Name or Unit Agreement Name

Carter-Eaves "NCT-A"

8. Well No.

3

9. Pool name or Wildcat

Jalpat

e. Well Location

Unit Letter N : 512 Feet From The South Line and 1923 Feet From The West Line

Section 6 Township 24S Range 37E NMPM Lea County

10. Proposed Depth  
3600'

11. Formation  
Seven Rivers

12. Rotary or C.T.  
Rotary

13. Elevations (Show whether DF, RT, GR, etc.)  
3331.5 GR

14. Kind & Status Plug. Bond  
Blanket

15. Drilling Contractor  
McGee Drilling Corp.

16. Approx. Date Work will start  
8-1-94

17. PROPOSED CASING AND CEMENT PROGRAM

SIZE OF HOLE	SIZE OF CASING	WEIGHT PER FOOT	SETTING DEPTH	SACKS OF CEMENT	EST. TOP
12-1/4"	9-5/8"	36	450	350 sx	Surface
8-3/4"	7"	23	3575	700 sx	Surface

Before drilling out from under surface pipe, the well will be equipped with a 3000-psi 10-inch Series-900 double-ram hydraulic BOP and Hydril and surface pipe and BOP system will be tested to a minimum pressure of 1500 psig. Cement volumes may be adjusted to insure that the cement behind both the 9-5/8" and 7" casing strings will be circulated in sufficient volumes to the surface.

OPER. OGRID NO. 006473

PROPERTY NO. 005037

POOL CODE 78240

EFF. DATE 4-18-94

API NO. 30-025-31280

IN ABOVE SPACE DESCRIBE PROPOSED PROGRAM: IF PROPOSAL IS TO DEEPEN OR PLUG BACK, GIVE DATA ON PRESENT PRODUCTIVE ZONE AND PROPOSED NEW PRODUCTIVE ZONE. GIVE BLOWOUT PREVENTER PROGRAM, IF ANY.

I hereby certify that the information above is true and complete to the best of my knowledge and belief.

SIGNATURE Doyle Hartman TITLE Owner/Operator DATE April 12, 1994

TYPE OR PRINT NAME Doyle Hartman TELEPHONE NO. 915/684-4011

(This space for State Use)

ORIGINAL SIGNED BY JERRY SEXTON  
DISTRICT I SUPERVISOR

APR 18 1994

APPROVED BY \_\_\_\_\_ TITLE \_\_\_\_\_ DATE \_\_\_\_\_

CONDITIONS OF APPROVAL, IF ANY:

Submit to Appropriate  
District Office  
State Lease - 4 copies  
Fee Lease - 3 copies

State of New Mexico  
Energy, Minerals and Natural Resources Department

Form C-102  
Revised 1-1-89

OIL CONSERVATION DIVISION

P.O. Box 2088

Santa Fe, New Mexico 87504-2088

DISTRICT I  
P.O. Box 1980, Hobbs, NM 88240

DISTRICT II  
P.O. Drawer DD, Artesia, NM 88210

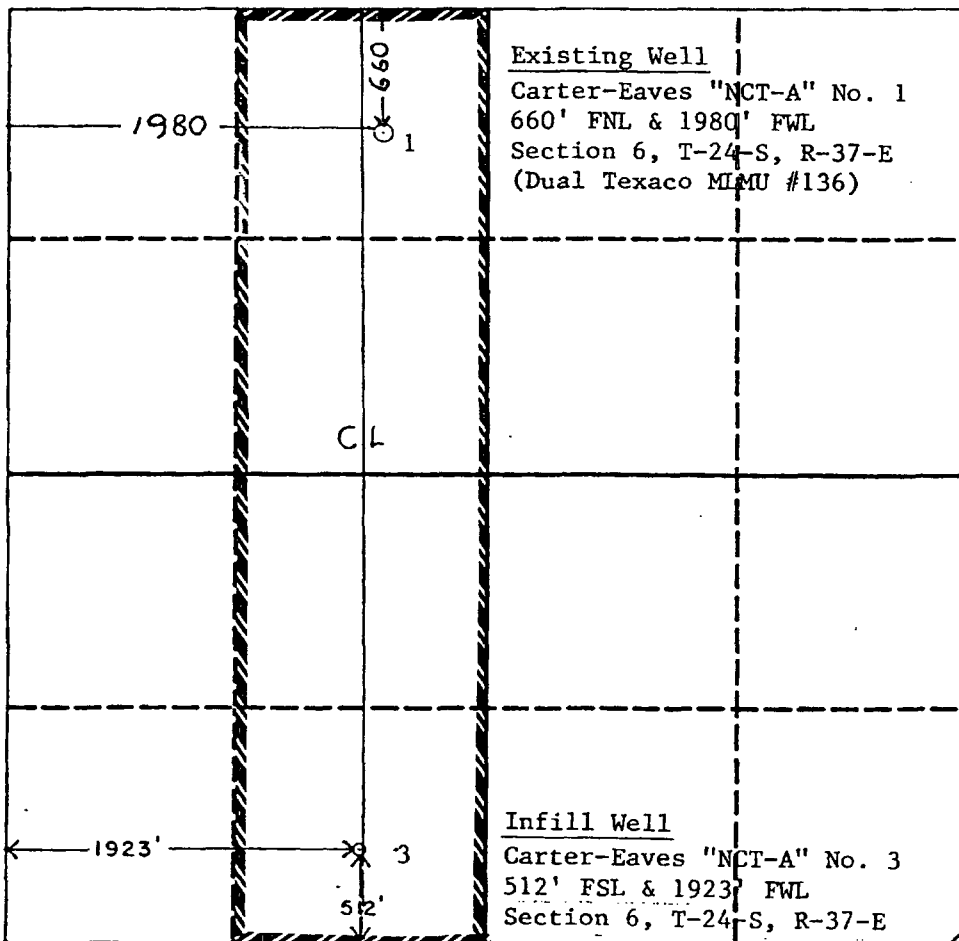
DISTRICT III  
1000 Rio Brazos Rd., Aztec, NM 87410

WELL LOCATION AND ACREAGE DEDICATION PLAT

All Distances must be from the outer boundaries of the section

Operator DOYLE HARTMAN			Lease CARTER EAVES NCT-A		Well No. 3
Unit Letter N	Section 6	Township 24 SOUTH	Range 37 EAST	County LEA	
Actual Footage Location of Well: 512 feet from the SOUTH line and 1923 feet from the WEST line					
Ground level Elev. 3331.5	Producing Formation Yates - 7R		Pool Jalmat (T-Y-7R) Gas		Dedicated Acreage: 159.8 Acres

- Outline the acreage dedicated to the subject well by colored pencil or hatchure marks on the plat below.
- If more than one lease is dedicated to the well, outline each and identify the ownership thereof (both as to working interest and royalty).
- If more than one lease of different ownership is dedicated to the well, have the interest of all owners been consolidated by communitization, unitization, force-pooling, etc.?  
☐ Yes ☐ No If answer is "yes" type of consolidation \_\_\_\_\_  
If answer is "no" list the owners and tract descriptions which have actually been consolidated. (Use reverse side of this form if necessary.)  
No allowable will be assigned to the well until all interests have been consolidated (by communitization, unitization, forced-pooling, or otherwise) or until a non-standard unit, eliminating such interest, has been approved by the Division.



OPERATOR CERTIFICATION

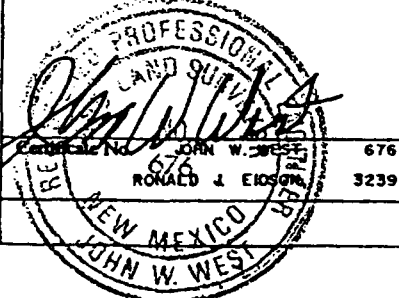
I hereby certify that the information contained herein is true and complete to the best of my knowledge and belief.

Signature  
*Don L. Mashburn*  
Printed Name  
Don L. Mashburn  
Position  
Engineer  
Company  
Doyle Hartman  
Date  
April 12, 1994

SURVEYOR CERTIFICATION

I hereby certify that the well location shown on this plat was plotted from field notes of actual surveys made by me or under my supervision, and that the same is true and correct to the best of my knowledge and belief.

Date Surveyed  
6-4-91  
Signature & Seal of  
Professional Surveyor





STATE OF NEW MEXICO  
ENERGY, MINERALS AND NATURAL RESOURCES DEPARTMENT  
OIL CONSERVATION DIVISION  
HOBBS DISTRICT OFFICE

August 19, 1992

BRUCE KING  
GOVERNOR

POST OFFICE BOX 1980  
HOBBS, NEW MEXICO 88241-1980  
(505) 393-6161

Doyle Hartman      Attn: Patrick Worrell

P.O. Box 10426

Midland, TX 79702

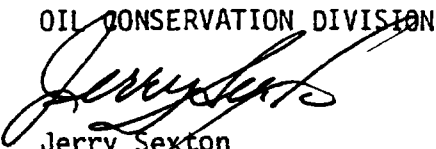
RE: CANCELLATION OF INTENT TO DRILL  
Carter-Eaves NCT-A #3 (512/S & 1923/W)  
Unit N, Sec. 6, T24S, R37E  
API #30-025-31280  
Lea County, NM

Gentlemen:

Six months or more have elapsed since Division Form C-101, Notice of Intention to Drill, for the subject well was approved. To date no progress reports, Forms C-103, have been received. Therefore, approval of your permit to drill this well has now expired and no drilling operations are to be initiated without further notice to and approval by the Oil Conservation Division. Pending such approval, this will be considered as an abandoned location.

Very truly yours,

OIL CONSERVATION DIVISION

  
Jerry Sexton  
Supervisor, District I

JS/ED/ed

cc: OCD Santa Fe  
BLM

E

Submit to Appropriate  
District Office  
State Lease - 6 copies  
Fee Lease - 5 copies

State of New Mexico  
Energy, Minerals and Natural Resources Department

Form C-101  
Revised 1-1-89

DISTRICT I  
P.O. Box 1980, Hobbs, NM 88240

DISTRICT II  
P.O. Drawer DD, Artesia, NM 88210

DISTRICT III  
1000 Rio Brazos Rd., Aztec, NM 87410

OIL CONSERVATION DIVISION

P.O. Box 2088  
Santa Fe, New Mexico 87504-2088

API NO. (assigned by OCD on New Wells)

30-025-31280

5. Indicate Type of Lease

STATE ☐ FEE ☒

6. State Oil & Gas Lease No.

APPLICATION FOR PERMIT TO DRILL, DEEPEN, OR PLUG BACK

1a. Type of Work:

DRILL ☒ RE-ENTER ☐ DEEPEN ☐ PLUG BACK ☐

b. Type of Well:

OIL WELL ☐ GAS WELL ☒ OTHER ☐  
SINGLE ZONE ☒ MULTIPLE ZONE ☐

2. Name of Operator

Doyle Hartman

3. Address of Operator

P. O. Box 10426, Midland, Texas 79702

7. Lease Name or Unit Agreement Name

Carter-Eaves "NCT-A"

8. Well No.

3

9. Pool name or Wildcat

Jalmat (T-Y-7R) Pro Gas

4. Well Location

Unit Letter N : 512 Feet From The South Line and 1923 Feet From The West Line

Section 6 Township 24-S Range 37-E NMPM Lea County

10. Proposed Depth  
3600'

11. Formation  
Tansill-Yates-7R

12. Rotary or C.T.  
Rotary

13. Elevations (Show whether DF, RT, GR, etc.)  
3347' RKB (3331.5 GR)

14. Kind & Status Plug. Bond  
Blanket

15. Drilling Contractor  
Cactus

16. Approx. Date Work will start  
July 8, 1991

17. PROPOSED CASING AND CEMENT PROGRAM

SIZE OF HOLE	SIZE OF CASING	WEIGHT PER FOOT	SETTING DEPTH	SACKS OF CEMENT	EST. TOP
12-1/4"	9-5/8"	36	450	350 sx	Surface
8-3/4"	7"	23	3575	700 sx	Surface

Before drilling out from under surface pipe, the well will be equipped with a 3000 psi 10" Series 900 double ram hydraulic BOP and Hydril surface pipe and rams will be tested to minimum 1500 psig. Cement volumes may be adjusted to insure that the cement bedhind both the 9-5/8" and 7" casing will be brought to surface.

IN ABOVE SPACE DESCRIBE PROPOSED PROGRAM: IF PROPOSAL IS TO DEEPEN OR PLUG BACK, GIVE DATA ON PRESENT PRODUCTIVE ZONE AND PROPOSED NEW PRODUCTIVE ZONE. GIVE BLOWOUT PREVENTER PROGRAM, IF ANY.

I hereby certify that the information above is true and complete to the best of my knowledge and belief.

SIGNATURE Patrick K. Worrell TITLE Engineer DATE 6-10-91

TYPE OR PRINT NAME Patrick K. Worrell

TELEPHONE NO.

(This space for State Use)

ORIGINAL SIGNED BY JERRY SEXTON

APPROVED BY DISTRICT SUPERVISOR TITLE DISTRICT SUPERVISOR DATE JUL 15 1991

CONDITIONS OF APPROVAL, IF ANY:

Permit Expires 6 Months From Approval  
Date Unless Drilling Underway.

Submit to Appropriate  
District Office  
State Lease - 4 copies  
Fee Lease - 3 copies

State of New Mexico  
Energy, Minerals and Natural Resources Department

Form C-102  
Revised 1-1-89

OIL CONSERVATION DIVISION

P.O. Box 2088  
Santa Fe, New Mexico 87504-2088

DISTRICT I  
P.O. Box 1900, Hobbs, NM 88240

DISTRICT II  
P.O. Drawer DD, Artesia, NM 88210

DISTRICT III  
1000 Rio Arriba Rd., Aztec, NM 87410

WELL LOCATION AND ACREAGE DEDICATION PLAT

All Distances must be from the outer boundaries of the section

Operator <b>DOYLE HARTMAN</b>			Lease <b>CARTER EAVES NCT-A</b>			Well No. <b>3</b>		
Unit Letter <b>N</b>	Section <b>6</b>	Township <b>24 SOUTH</b>	Range <b>37 EAST</b>	County <b>LEA</b>				
Actual Footage Location of Well: <b>512</b> feet from the <b>SOUTH</b> line and <b>1923</b> feet from the <b>WEST</b> line								
Ground level Elev. <b>3331.5</b>		Producing Formation <b>Yates-Seven Rivers</b>		Pool <b>Jalmat Gas</b>			Dedicated Acreage: <b>179.50</b> Acres	

1. Outline the acreage dedicated to the subject well by colored pencil or ink marks on the plat below.

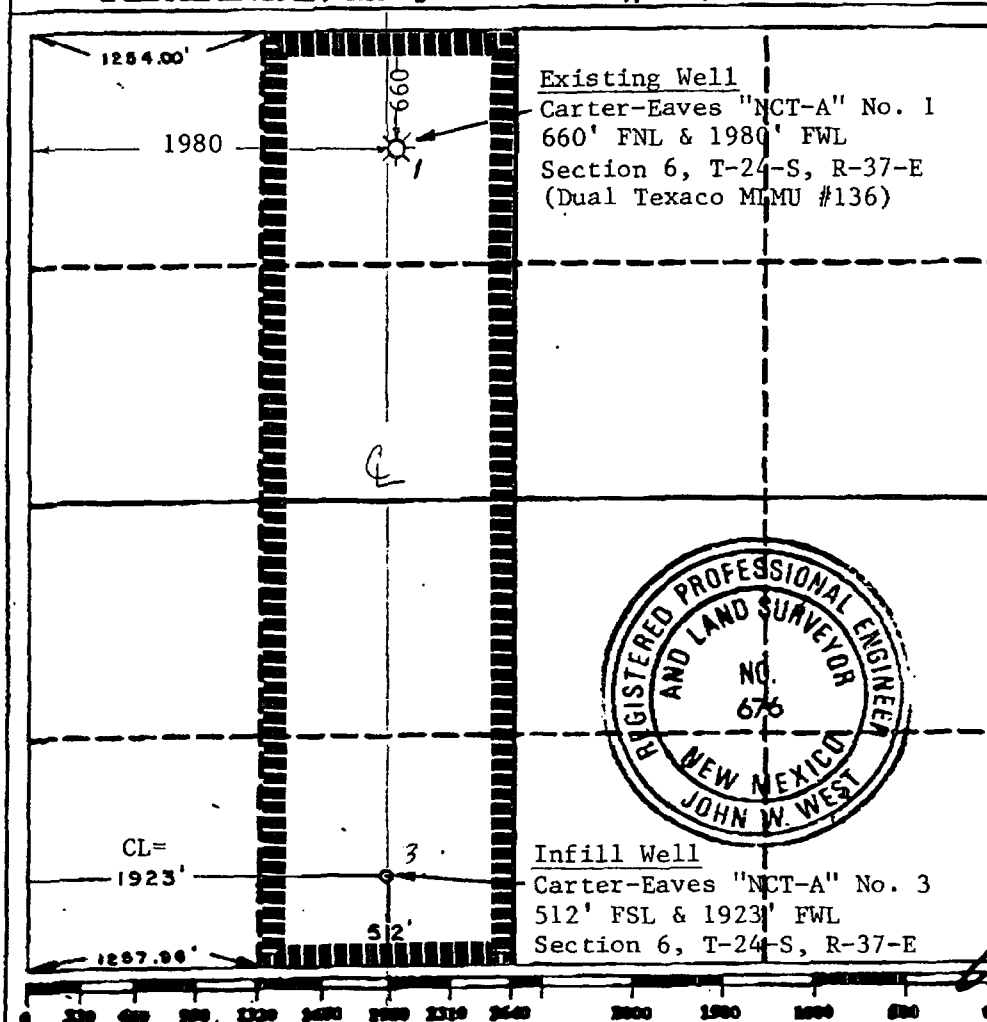
2. If more than one lease is dedicated to the well, outline each and identify the ownership thereof (both as to working interest and royalty).

3. If more than one lease of different ownership is dedicated to the well, have the interest of all owners been consolidated by communitization, unitization, force-pooling, etc.?

☐ Yes ☐ No If answer is "yes" type of consolidation

If answer is "no" list the owners and tract descriptions which have actually been consolidated. (Use reverse side of this form if necessary.)

No allowable will be assigned to the well until all interests have been consolidated (by communitization, unitization, forced-pooling, or otherwise) or until a non-standard unit, eliminating such interest, has been approved by the Division.



OPERATOR CERTIFICATION

I hereby certify that the information contained herein is true and complete to the best of my knowledge and belief.

Signature  
*Patrick K. Worrell*

Printed Name  
**Patrick K. Worrell**

Position  
**Engineer**  
Company  
**Doyle Hartman**

Date  
**June 10, 1991**

SURVEYOR CERTIFICATION

I hereby certify that the well location shown on this plat was plotted from field notes of actual surveys made by me or under my supervision, and that the same is true and correct to the best of my knowledge and belief.

Date Surveyed  
**6-4-91**

Signature & Seal of  
Professional Surveyor

*John W. West*  
Professional No. **JOHN W. WEST, 676**  
**RONALD J. ECKSON, 3239**