

DATE IN 12/8/06	SUSPENSE	ENGINEER CATANACH	LOGGED IN 12/12/06	TYPE NSL	APP NO. PTD 50634632007
-----------------	----------	-------------------	--------------------	----------	-------------------------

ABOVE THIS LINE FOR DIVISION USE ONLY

NEW MEXICO OIL CONSERVATION DIVISION
- Engineering Bureau -
 1220 South St. Francis Drive, Santa Fe, NM 87505



5527

ADMINISTRATIVE APPLICATION CHECKLIST

THIS CHECKLIST IS MANDATORY FOR ALL ADMINISTRATIVE APPLICATIONS FOR EXCEPTIONS TO DIVISION RULES AND REGULATIONS WHICH REQUIRE PROCESSING AT THE DIVISION LEVEL IN SANTA FE

Application Acronyms:

[NSL-Non-Standard Location] [NSP-Non-Standard Proration Unit] [SD-Simultaneous Dedication]
[DHC-Downhole Commingling] [CTB-Lease Commingling] [PLC-Pool/Lease Commingling]
[PC-Pool Commingling] [OLS - Off-Lease Storage] [OLM-Off-Lease Measurement]
[WFX-Waterflood Expansion] [PMX-Pressure Maintenance Expansion]
[SWD-Salt Water Disposal] [IPI-Injection Pressure Increase]
[EOR-Qualified Enhanced Oil Recovery Certification] [PPR-Positive Production Response]

2006 DEC 8 PM 4:49

[1] TYPE OF APPLICATION - Check Those Which Apply for [A]

[A] Location - Spacing Unit - Simultaneous Dedication
☒ NSL ☐ NSP ☐ SD

Check One Only for [B] or [C]

[B] Commingling - Storage - Measurement
☐ DHC ☐ CTB ☐ PLC ☐ PC ☐ OLS ☐ OLM

[C] Injection - Disposal - Pressure Increase - Enhanced Oil Recovery
☐ WFX ☐ PMX ☐ SWD ☐ IPI ☐ EOR ☐ PPR

[D] Other: Specify _____

[2] NOTIFICATION REQUIRED TO: - Check Those Which Apply, or Does Not Apply

- [A] ☐ Working, Royalty or Overriding Royalty Interest Owners
- [B] ☐ Offset Operators, Leaseholders or Surface Owner
- [C] ☐ Application is One Which Requires Published Legal Notice
- [D] ☐ Notification and/or Concurrent Approval by BLM or SLO
U.S. Bureau of Land Management - Commissioner of Public Lands, State Land Office
- [E] ☐ For all of the above, Proof of Notification or Publication is Attached, and/or,
- [F] ☐ Waivers are Attached

[3] SUBMIT ACCURATE AND COMPLETE INFORMATION REQUIRED TO PROCESS THE TYPE OF APPLICATION INDICATED ABOVE.

[4] CERTIFICATION: I hereby certify that the information submitted with this application for administrative approval is **accurate** and **complete** to the best of my knowledge. I also understand that **no action** will be taken on this application until the required information and notifications are submitted to the Division.

Note: Statement must be completed by an individual with managerial and/or supervisory capacity.

Ocean Munds Dry Ocean Munds Dry Attorney 12-11-06
 Print or Type Name Signature Title Date
omundsdry@hollandhart.com
 e-mail Address

December 11, 2006

HAND DELIVERY

Mr. Mark Fesmire, Director
Oil Conservation Division
New Mexico Department of Energy,
Minerals and Natural Resources
1220 South Saint Francis Drive
Santa Fe, New Mexico 87505

Re: Application of EOG Resources, Inc. ("EOG"), Inc., for administrative approval of an unorthodox well location for its PO C 1 Fee Well No. 1H, to be horizontally drilled to the Wolfcamp formation at a surface location 1880 feet from the South line and 660 feet from the East line and an unorthodox bottomhole location 1929 feet from the South line and 1343 feet from the West line of Section 1, Township 16 South, Range 24 East, N.M.P.M., Eddy County, New Mexico.

Dear Mr. Fesmire:

EOG Resources, Inc. ("EOG") hereby seeks administrative approval pursuant to the provisions of Division Rule 104 F (2)-(4) and Rule 111(C) of an unorthodox well location for its PO C 1 Fee Well No. 1H, in the Wolfcamp formation, to be horizontally drilled at a surface location 1880 feet from the South line and 660 feet from the East line and a bottomhole location 1929 feet from the South line and 1343 feet from the West line of Section 1, Township 16 South, Range 24 East, N.M.P.M., Eddy County, New Mexico.

This proposed location in the Wolfcamp formation is unorthodox because it is governed by the Division's Statewide Rules which provides for horizontal wells on 320-acre spacing units to be located entirely within the producing area. The proposed bottomhole location is outside of the producing area. A standard 320-acre spacing unit and proration unit comprised of the S/2 of Section 1 will be dedicated to the well.

EOG applied for a standard bottomhole location for its PO C 1 Fee Well No. 1H to be located 1880 feet from the South line and 660 feet from the West line. See the C-102 attached as **Exhibit A**. However, after plotting the actual wellpath, EOG crossed the hardline at a measured depth of 6759 feet and returned to a legal location at a measured



depth of 7181 feet. The total lateral exposed is 422 feet at a maximum of 9 feet across the hardline. See the well path survey attached as **Exhibit B**. The actual bottomhole location will therefore be 1929 feet from the South line and 1343 feet from the West line. The total depth of this well is approximately 7714 feet.

This location encroaches on the spacing unit to the north which is operated by EOG and all underlying mineral interests are common in both spacing units. **Exhibit C** is the C-102 showing the offsetting spacing unit to the north. Therefore there are no affected parties as defined by Division rules and no notice is required.

EOG respectfully requests expedited review of this application. EOG desires to fracture the well as soon as possible for economic reasons and because the subject well proves up the geology of additional well locations. EOG also wishes to maintain its current rig schedule.

Also enclosed is a proposed administrative order prepared by EOG on behalf of the Division.

Your attention to this application is appreciated.

Sincerely,

Ocean Munds-Dry
ATTORNEY FOR EOG RESOURCES, INC.

Enclosures

cc: Rick Lanning
Oil Conservation Division – Hobbs/Artesia

EOG Resources, Inc.

Attention: Rick Lanning

Administrative Order NSL-_____

Dear Mr. Lanning:

Reference is made to your application dated December 11, 2006 for an unorthodox well location for EOG Resources, Inc.'s PO C 1 Fee Well No. 1H to be horizontally drilled to the Wolfcamp formation. Said well will be located at a surface location 1880 feet from the South line and 660 feet from the East line and a bottomhole location 1929 feet from the South line and 1343 feet from the West line of Section 1, Township 16 South, Range 249 East, NMPM, Eddy County, New Mexico.

A 320-acre spacing and proration unit in the Wolfcamp formation comprising the S/2 of said Section 1 is to be dedicated to said well.

This application has been duly filed under the provisions of Rule 104.F of the General Rules of the Oil Conservation Division revised by Division Order No. R-11231, issued by the New Mexico Oil Conservation Commission in Case No. 12119 on August 12, 1999.

By authority granted me under the provisions of Rule 104.F(2), the above-described unorthodox well location within this 320-acre unit in the Wolfcamp formation is hereby approved.

Sincerely,

Mark E. Fesmire, P.E.
Director

cc: Oil Conservation Division - Hobbs/Artesia

District I
1625 N. French Dr., Hobbs, NM 88240
District II
1301 W. Grand Avenue, Artesia, NM 88210
District III
1000 Rio Brazos Rd., Aztec, NM 87410
District IV
1220 S. St. Francis Dr., Santa Fe, NM 87505

State of New Mexico
Energy, Minerals & Natural Resources Department
OIL CONSERVATION DIVISION
1220 South St. Francis Dr.
Santa Fe, NM 87505

Form C-102
Revised October 12, 2005
Submit to Appropriate District Office
State Lease-4 Copies
Fee Lease-3 Copies

☐ AMENDED REPORT

WELL LOCATION AND ACREAGE DEDICATION PLAT

API Number 30-015-34753	Pool Code 75260	Pool Name Cottonwood Creek; WC, West (gas)
Property Code 35560	Property Name PO C 1 FEE	Well Number 1H
GRID No. 7377	Operator Name EOG RESOURCES, INC.	Elevation 3565'

Surface Location

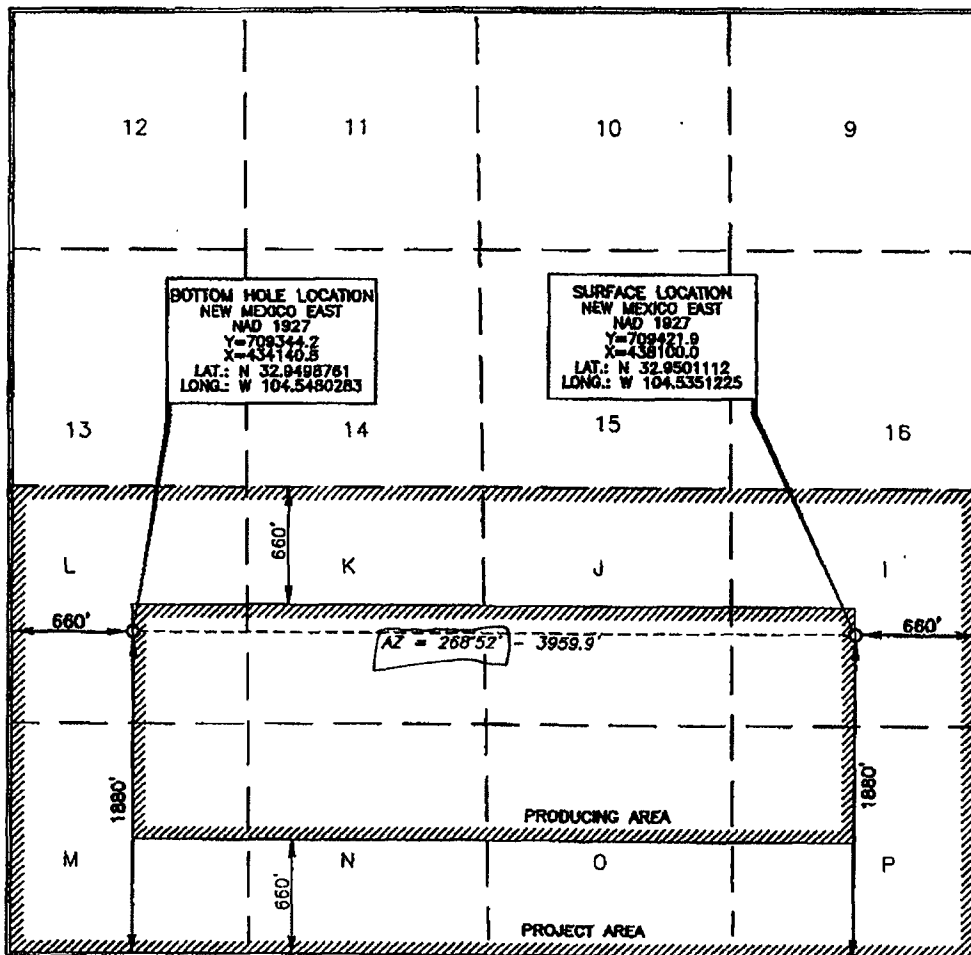
UL or lot no.	Section	Township	Range	Lot 1/4	Feet from the	North/South line	Feet from the	East/West line	County
1	1	16 SOUTH	24 EAST, N.M.P.M.		1880	SOUTH	660	EAST	EDDY

Bottom Hole Location If Different From Surface

UL or lot no.	Section	Township	Range	Lot 1/4	Feet from the	North/South line	Feet from the	East/West line	County
L	1	16 SOUTH	24 EAST, N.M.P.M.		1880	SOUTH	660	WEST	EDDY

Dedicated Acres	Joint or Infill	Consolidation Code	Order No.
320			

No allowable will be assigned to this completion until all interests have been consolidated or a non-standard unit has been approved by the division.



OPERATOR CERTIFICATION

I hereby certify that the information contained herein is true and complete to the best of my knowledge and belief, and that this organization either owns a working interest or unleased mineral interest in the land including the proposed bottom hole location or has a right to drill this well at this location pursuant to a contract with an owner of such a mineral or working interest, or to a voluntary pooling agreement or a compulsory pooling order heretofore entered by the division.

Donny G. Glanton 3/29/06
Signature Date

Donny G. Glanton
Printed Name

SURVEYOR CERTIFICATION

I hereby certify that the well location shown on this plat was plotted from field notes of a local survey made by me or under my supervision, and that the same is true and correct to the best of my belief.

15079
MARCH 7, 2006
Date of Survey
Signature and Seal of Professional Surveyor
Larry J. Asch
Certificate Number 15079

WOF 060307ML-d (c00)

EXHIBIT A

Pathfinder Energy

Survey Report - Geographic

Company: EOG Resources		Date: 12/8/2006		Time: 10:47:04		Page: 1	
Field: Thames Field		Co-ordinate(NE) Reference: Well: PO C 1 Fee #1H, Grid North					
Site: PO C 1 Fee #1H		Vertical (TVD) Reference: SITE 3583.0					
Well: PO C 1 Fee #1H		Section (VS) Reference: Well (0.00N,0.00E,268.88Azi)					
Wellpath: OH		Survey Calculation Method: Minimum Curvature				Db: Sybase	

Field: Thames Field Eddy, Co. NM USA		Map Zone: New Mexico, Eastern Zone	
Map System: US State Plane Coordinate System 1927		Coordinate System: Well Centre	
Geo Datum: NAD27 (Clarke 1866)		Geomagnetic Model: igrf2005	
Sys Datum: Mean Sea Level			

Site: PO C 1 Fee #1H			
Site Position:		Northing: 709421.90 ft	Latitude: 32 57 0.401 N
From: Map		Easting: 438100.00 ft	Longitude: 104 32 6.441 W
Position Uncertainty: 0.00 ft			North Reference: Grid
Ground Level: 3565.00 ft			Grid Convergence: -0.11 deg

Well: PO C 1 Fee #1H		Slot Name:	
Well Position: +N/-S 0.00 ft	Northing: 709421.90 ft	Latitude: 32 57 0.401 N	
+E/-W 0.00 ft	Easting: 438100.00 ft	Longitude: 104 32 6.441 W	
Position Uncertainty: 0.00 ft			

Wellpath: OH		Drilled From: Surface	
Current Datum: SITE		Tie-on Depth: 0.00 ft	
Magnetic Data: 12/1/2006		Above System Datum: Mean Sea Level	
Field Strength: 49441 nT		Declination: 8.61 deg	
Vertical Section: Depth From (TVD)		Mag Dip Angle: 60.80 deg	
ft	+N/-S ft	+E/-W ft	Direction deg
0.00	0.00	0.00	268.88

Survey: Pathfinder MWD Surveys		Start Date: 12/6/2006	
Company: Pathfinder Energy		Engineer: Midwellplan	
Tool:		Tied-to: From: Definitive Path	

Survey: Pathfinder MWD Surveys											
MD ft	Incl deg	Azim deg	TVD ft	+N/-S ft	+E/-W ft	Map Northing ft	Map Easting ft	<--- Latitude ---> Deg Min Sec		<--- Longitude ---> Deg Min Sec	
3910.00	1.41	57.57	3909.68	10.67	4.43	709432.57	438104.43	32 57	0.506 N	104 32	6.389 W
4084.00	1.93	56.71	4083.61	13.43	8.69	709435.33	438108.69	32 57	0.534 N	104 32	6.339 W
4116.00	1.32	48.71	4115.59	13.97	9.41	709435.87	438109.41	32 57	0.539 N	104 32	6.331 W
4148.00	1.41	293.40	4147.59	14.37	9.33	709436.27	438109.33	32 57	0.543 N	104 32	6.332 W
4179.00	4.57	273.01	4178.54	14.59	7.75	709436.49	438107.75	32 57	0.545 N	104 32	6.350 W
4210.00	8.35	268.88	4209.34	14.61	4.26	709436.51	438104.26	32 57	0.545 N	104 32	6.391 W
4242.00	12.22	268.00	4240.82	14.44	-1.45	709436.34	438098.55	32 57	0.544 N	104 32	6.458 W
4273.00	15.83	267.38	4270.89	14.14	-8.95	709436.04	438091.05	32 57	0.540 N	104 32	6.546 W
4305.00	19.43	268.44	4301.38	13.79	-18.64	709435.69	438081.36	32 57	0.537 N	104 32	6.660 W
4336.00	23.39	268.96	4330.24	13.54	-29.95	709435.44	438070.05	32 57	0.534 N	104 32	6.792 W
4367.00	28.49	271.16	4358.11	13.58	-43.50	709435.48	438056.50	32 57	0.534 N	104 32	6.952 W
4399.00	30.60	268.70	4385.94	13.55	-59.28	709435.45	438040.72	32 57	0.534 N	104 32	7.137 W
4430.00	34.21	267.82	4412.11	13.04	-75.88	709434.94	438024.12	32 57	0.528 N	104 32	7.331 W
4462.00	37.72	267.38	4438.01	12.25	-94.65	709434.15	438005.35	32 57	0.520 N	104 32	7.552 W
4494.00	41.42	267.38	4462.67	11.31	-115.01	709433.21	437984.99	32 57	0.510 N	104 32	7.791 W
4525.00	45.02	267.65	4485.26	10.40	-136.22	709432.30	437963.78	32 57	0.501 N	104 32	8.040 W
4556.00	48.28	268.52	4506.54	9.65	-158.75	709431.55	437941.25	32 57	0.493 N	104 32	8.304 W
4588.00	51.79	268.88	4527.09	9.09	-183.26	709430.99	437916.74	32 57	0.487 N	104 32	8.592 W
4619.00	55.57	269.14	4545.45	8.66	-208.23	709430.56	437891.77	32 57	0.482 N	104 32	8.885 W
4650.00	59.09	269.14	4562.18	8.27	-234.32	709430.17	437865.68	32 57	0.478 N	104 32	9.191 W
4681.00	63.31	269.32	4577.11	7.91	-261.48	709429.81	437838.52	32 57	0.474 N	104 32	9.509 W
4713.00	66.83	269.14	4590.59	7.52	-290.49	709429.42	437809.51	32 57	0.470 N	104 32	9.850 W
4745.00	71.14	268.26	4602.07	6.84	-320.34	709428.74	437779.66	32 57	0.462 N	104 32	10.200 W

EXHIBIT B

Pathfinder Energy

Survey Report - Geographic

Company: EOG Resources
Field: Thames Field
Site: PO C 1 Fee #1H
Well: PO C 1 Fee #1H
Wellpath: OH

Date: 12/8/2006 Time: 10:47:04 Page: 2
Co-ordinate(NE) Reference: Well: PO C 1 Fee #1H, Grid North
Vertical (TVD) Reference: SITE 3583.0
Section (VS) Reference: Well (0.00N,0.00E,268.88Azi)
Survey Calculation Method: Minimum Curvature Db: Sybase

Survey: Pathfinder MWD Surveys

MD ft	Incl deg	Azim deg	TVD ft	+N/-S ft	+E/-W ft	Map Northing ft	Map Easting ft	<--- Latitude --->			<--- Longitude --->		
								Deg	Min	Sec	Deg	Min	Sec
4776.00	74.74	267.56	4611.16	5.75	-349.95	709427.65	437750.05	32	57	0.451 N	104	32	10.548 W
4808.00	78.08	267.56	4618.68	4.43	-381.03	709426.33	437718.97	32	57	0.437 N	104	32	10.912 W
4839.00	81.34	268.08	4624.21	3.27	-411.50	709425.17	437688.50	32	57	0.425 N	104	32	11.270 W
4871.00	84.24	268.35	4628.23	2.28	-443.23	709424.18	437656.77	32	57	0.415 N	104	32	11.642 W
4933.00	90.13	270.02	4631.27	1.40	-505.12	709423.30	437594.88	32	57	0.405 N	104	32	12.369 W
5028.00	92.07	271.34	4629.45	2.53	-600.09	709424.43	437499.91	32	57	0.414 N	104	32	13.483 W
5122.00	91.10	269.93	4626.85	3.57	-694.04	709425.47	437405.96	32	57	0.423 N	104	32	14.586 W
5216.00	91.54	270.81	4624.69	4.18	-788.01	709426.08	437311.99	32	57	0.427 N	104	32	15.689 W
5310.00	89.16	268.79	4624.11	3.85	-882.00	709425.75	437218.00	32	57	0.422 N	104	32	16.792 W
5436.00	90.57	269.93	4624.41	2.44	-1007.99	709424.34	437092.01	32	57	0.406 N	104	32	18.270 W
5562.00	91.36	271.60	4622.29	4.12	-1133.95	709426.02	436966.05	32	57	0.420 N	104	32	19.748 W
5688.00	92.15	272.22	4618.43	8.32	-1259.82	709430.22	436840.18	32	57	0.459 N	104	32	21.226 W
5814.00	88.55	268.00	4617.66	8.56	-1385.77	709430.46	436714.23	32	57	0.459 N	104	32	22.704 W
5941.00	90.75	271.25	4618.43	7.73	-1512.74	709429.63	436587.26	32	57	0.448 N	104	32	24.194 W
6067.00	90.48	272.13	4617.08	11.45	-1638.68	709433.35	436461.32	32	57	0.482 N	104	32	25.672 W
6224.00	91.54	272.39	4614.31	17.64	-1795.53	709439.54	436304.47	32	57	0.541 N	104	32	27.513 W
6351.00	91.28	274.32	4611.19	25.07	-1922.27	709446.97	436177.73	32	57	0.612 N	104	32	29.000 W
6510.00	91.28	274.94	4607.64	37.90	-2080.71	709459.80	436019.29	32	57	0.736 N	104	32	30.860 W
6636.00	89.16	274.06	4607.15	47.78	-2206.31	709469.68	435893.69	32	57	0.831 N	104	32	32.334 W
6759.00	88.99	273.37	4609.14	55.75	-2329.03	709477.65	435770.97	32	57	0.907 N	104	32	33.775 W
6760.00	88.99	273.36	4609.15	55.81	-2330.03	709477.71	435769.97	32	57	0.908 N	104	32	33.786 W
6981.00	87.14	267.12	4616.62	56.74	-2550.79	709478.64	435549.21	32	57	0.913 N	104	32	36.377 W
7075.00	88.64	266.94	4620.08	51.87	-2644.59	709473.77	435455.41	32	57	0.863 N	104	32	37.478 W
7170.00	90.22	266.06	4621.03	46.07	-2739.41	709467.97	435360.59	32	57	0.803 N	104	32	38.590 W
7181.00	90.33	265.98	4620.98	45.31	-2750.38	709467.21	435349.62	32	57	0.796 N	104	32	38.719 W
7264.00	91.19	265.36	4619.87	39.04	-2833.13	709460.94	435266.87	32	57	0.732 N	104	32	39.690 W
7358.00	92.33	263.51	4616.99	29.93	-2926.64	709451.83	435173.36	32	57	0.640 N	104	32	40.787 W
7452.00	92.24	262.64	4613.24	18.61	-3019.88	709440.51	435080.12	32	57	0.526 N	104	32	41.881 W
7547.00	90.31	259.03	4611.12	3.48	-3113.62	709425.38	434986.38	32	57	0.375 N	104	32	42.981 W
7642.00	85.74	257.80	4614.40	-15.58	-3206.61	709406.32	434893.39	32	57	0.184 N	104	32	44.072 W

Annotation

MD ft	TVD ft	
3910.00	3909.68	Tie In
6759.00	4609.14	Cross Hard-Line (North) @ 6759 MD
7181.00	4620.98	Cross Hard-Line (South) @ 7181 MD

District I
1625 M. French Dr., Hobbs, NM 88240
District II
1301 W. Grand Avenue, Artesia, NM 88210
District III
1000 Rio Brazos Rd., Aztec, NM 87410
District IV
1220 S. St. Francis Dr., Santa Fe, NM 87505

State of New Mexico
Energy, Minerals & Natural Resources Department
OIL CONSERVATION DIVISION
1220 South St. Francis Dr.
Santa Fe, NM 87505

Form C-102
Revised October 12, 2005
Submit to Appropriate District Office
State Lease- 4 Copies
Fee Lease- 3 Copies

☐ AMENDED REPORT

WELL LOCATION AND ACREAGE DEDICATION PLAT

API Number 30-015-34751	Pool Code 75260	Pool Name Cottonwood Creek; WC, West (Gas)
Property Code	Property Name PO B 1 FEE	Well Number 1H
OGRD No. 7377	Operator Name EOG RESOURCES, INC.	Elevation 3556'

Surface Location

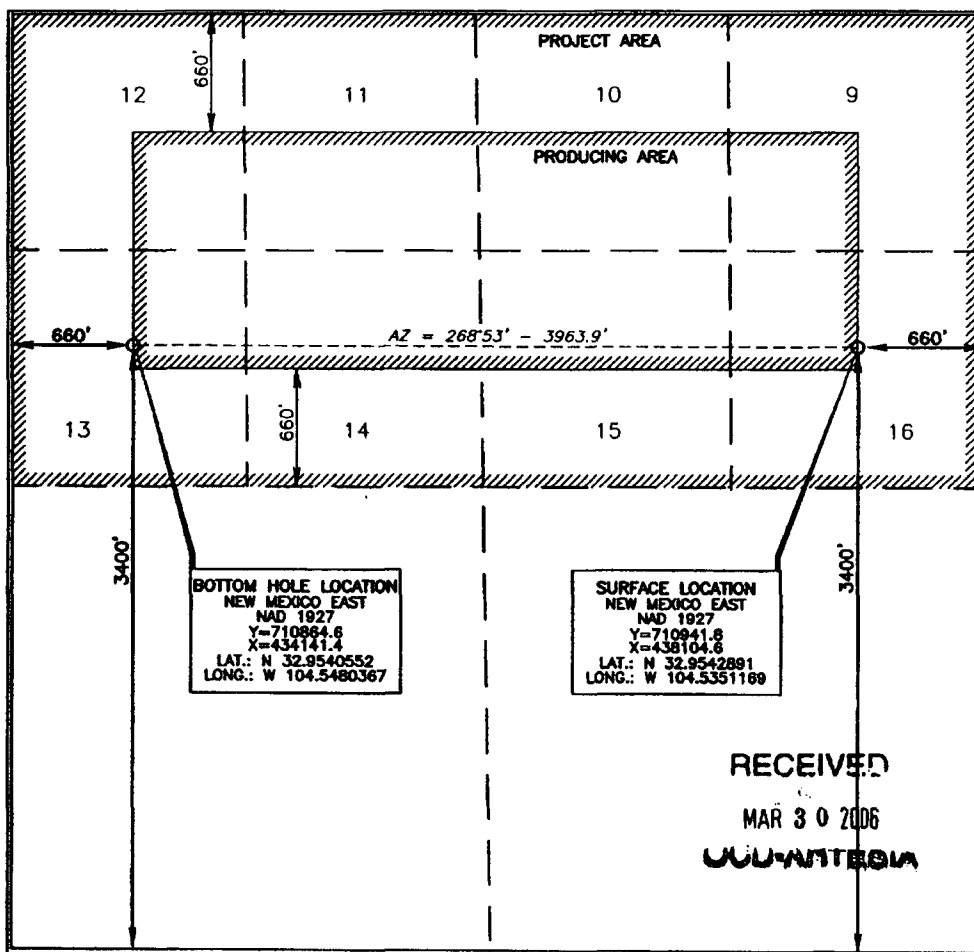
UL or lot no.	Section	Township	Range	Lot Idn	Feet from the	North/South line	Feet from the	East/West line	County
16	1	16 SOUTH	24 EAST, N.M.P.M.		3400	SOUTH	660	EAST	EDDY

Bottom Hole Location If Different From Surface

UL or lot no.	Section	Township	Range	Lot Idn	Feet from the	North/South line	Feet from the	East/West line	County
13	1	16 SOUTH	24 EAST, N.M.P.M.		3400	SOUTH	660	WEST	EDDY

Dedicated Acres 320	Joint or Infill	Consolidation Code	Order No.
-------------------------------	-----------------	--------------------	-----------

No allowable will be assigned to this completion until all interests have been consolidated or a non-standard unit has been approved by the division.



OPERATOR CERTIFICATION

I hereby certify that the information contained herein is true and complete to the best of my knowledge and belief, and that this organization either owns a working interest or unleased mineral interest in the land including the proposed bottom hole location or has a right to drill this well at this location pursuant to a contract with an owner of such a mineral or working interest, or to a voluntary pooling agreement or a compulsory pooling order heretofore entered by the division.

Donny G. Glanton 3/29/06
Signature Date

Donny G. Glanton
Printed Name

SURVEYOR CERTIFICATION

I hereby certify that the well location shown on this plat was plotted from field notes or actual surveys made by me or under my supervision, and that the same is true and correct to the best of my belief.

15079
MARCH 7, 2006
Date of Survey
Signature and Seal of Professional Surveyor

Terry J. Asel
Certificate Number 15079

WOF 060307ML-c (CDE)

EXHIBIT C

Catanach, David, EMNRD

From: Jason_LaGrega@eogresources.com
Sent: Tuesday, December 12, 2006 3:22 PM
To: Catanach, David, EMNRD
Subject: RE: EOG PO C1 FEE #1H

David,

At the point that we crossed the hardline the wellbore was at the following footages:

1980.07' FSL and 2989.03' FEL

When we crossed back across the hardline into a legal location, the wellbore was at the following footages:

1979.99' FSL and 3410.3' FEL.

At the maximum displacement over the hardline, the wellbore was at the following footages:

3144.82' FEL and 1988.46' FSL.

As far as the spacing unit, EOG was granted 160 acre spacing to develop this field. The reason that the hardline dips from east to west is because the section line dips slightly from east to west. The section line and hardline follow a 268.88 degree azimuth. Please advise if you have any additional questions.

Thanks,
Jason

"Catanach, David,
EMNRD"
<david.catanach@state.nm.us>

<Jason_LaGrega@eogresources.com>

To

cc

12/12/2006 03:49
PM

Subject

RE: EOG PO C1 FEE #1H

Jason,

At the point that you crossed the hard line, and then at the point that you crossed back over the hard line, are you able to give me the footages from the section lines, (e.g. 1900' FSL & 860' FWL)?

Also, the spacing unit for that well looks to be standard (320 acres) which would make the dimensions 2640 feet north to south and 5,280 feet west to east. I guess I'm still a little unclear about how that hard line dips from east to west. The hard line represents the line that is 660 feet from the northern boundary of the spacing unit.

Thanks for the help.

David

-----Original Message-----

From: Jason_LaGrega@eogresources.com
[mailto:Jason_LaGrega@eogresources.com]
Sent: Tuesday, December 12, 2006 1:45 PM
To: Catanach, David, EMNRD
Subject: Fw: EOG PO C1 FEE #1H

David,

Attached is the plot and survey data from our directional company. Please review and let me know if you have any questions or concerns. Also, will EOG be required to file any additional paperwork or are we authorized to proceed with our completion plans?

Thanks,
Jason LaGrega
432-894-1217

----- Forwarded by Jason Lagrega/EOGResources on 12/12/2006 01:59 PM -----

"PFMIDWellplanner
"

<midwellplan@path
finderlwd.com>

To
<Jason_LaGrega@eogresources.com>

cc

12/08/2006 01:51
PM

Subject

EOG PO C1 FEE #1H

Derek Crocker
Directional Drilling Well Planner
PathFinder Energy Services
E Work: (432) 687-1647
derek.crocker@pathfinderlwd.com
(See attached file: PO C 1 Fee #1H Morning Update.pdf)

Confidentiality Notice: This e-mail, including all attachments is for the sole use of the intended recipient(s) and may contain confidential and privileged information. Any unauthorized review, use, disclosure or distribution is prohibited unless specifically provided under the New Mexico Inspection of Public Records Act. If you are not the intended recipient, please contact the sender and destroy all copies of this message. -- This email has been scanned by the Sybari - Antigen Email System.

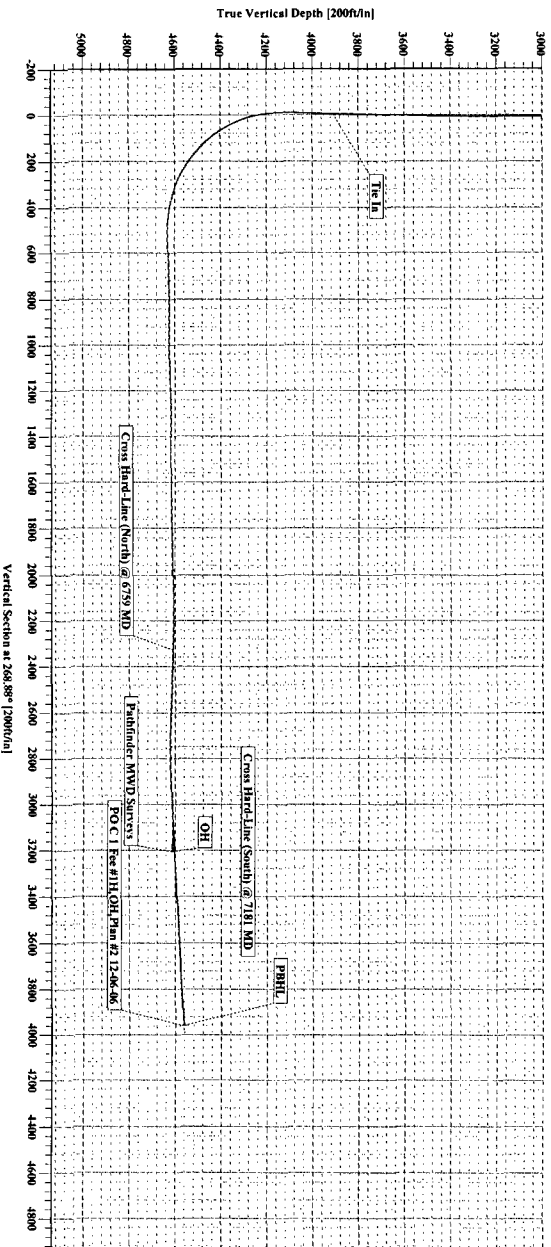
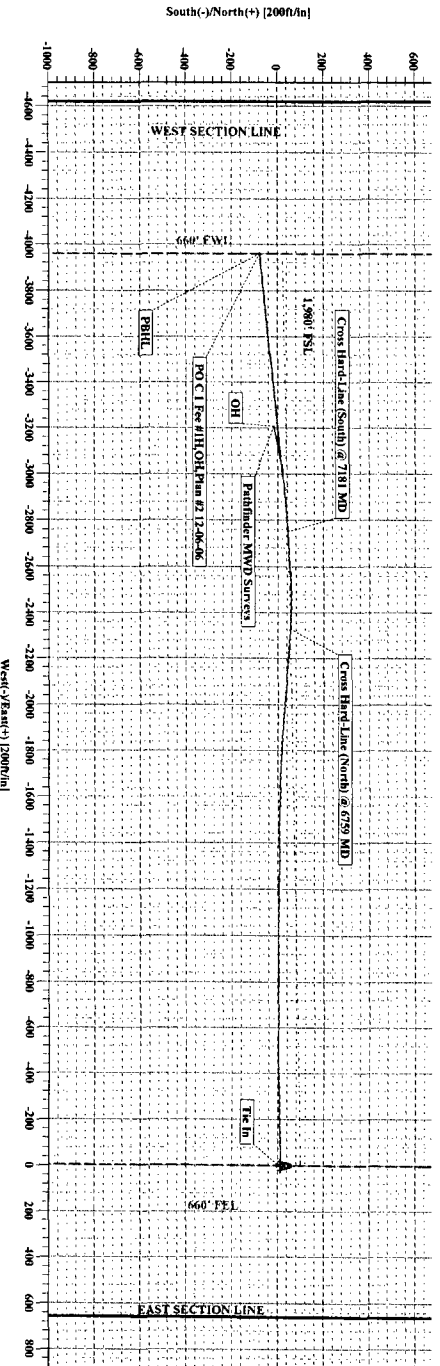


eog resources

Field: Thames Field
Site: PO C 1 Fee #1H
Well: PO C 1 Fee #1H
Wellpath: OH
Survey: Pathfinder MWD Surveys

PATHFINDER

Survey: Pathfinder MWD Surveys (PO C 1 Fee #1H OH)										
No	MD	Inc	Az	TVD	+N/S	+E/W	DLeg	Tface	VSec	
45	7075.00	88.64	266.94	4620.08	51.87	-2644.59	1.61	-6.84	2643.07	
46	7170.00	90.22	266.06	4621.03	46.07	-2739.41	1.90	-29.12	2737.98	
47	7264.00	91.19	265.36	4619.87	39.04	-2833.13	1.27	-35.81	2831.82	
48	7358.00	92.33	263.51	4616.99	29.93	-2926.64	2.31	-58.32	2925.49	
49	7452.00	92.24	262.64	4613.24	18.61	-3019.88	0.93	-95.89	3018.95	
50	7547.00	90.31	259.03	4611.12	3.48	-3113.62	4.31	-118.09	3112.96	
51	7642.00	85.74	257.80	4614.40	-15.58	-3206.61	4.98	-164.96	3206.30	



SITE DETAILS
PO C 1 Fee #1H
Site Centre Northing: 709421.90
Easting: 438100.00
Ground Level: 3565.00
Positional Uncertainty: 0.00
Convergence: -0.11

Geometric to Grid North
True North: 0.11°
Magnetic North: 8.72°
Magnetic Field
Strength: 40441T
Dip Angle: 60.80°
Date: 12/1/2006
Model: igf2005

TARGET DETAILS
Name TVD MD Shape
PBHL 4563.00 -77.70 -3959.20 Point

WELL PATH DETAILS
OH
Ref Datum: SITE 3583.00H
V Section Angle: 268.88°
Origin +N/S: 0.00
Origin +E/W: 0.00
Starting From TVD: 0.00

ANNOTATIONS
No TVD MD Annotation
1 3909.68 3910.00 Tie In
2 4609.14 6759.00 Cross Hard-Line (North) @ 6759 MD
3 4620.98 7181.00 Cross Hard-Line (South) @ 7181 MD