



# SHELL OIL COMPANY

PETROLEUM BUILDING

P.O. BOX 1509

MIDLAND, TEXAS 79701

SEP 22 1969

September 18, 1969

Subject: East Pearl Queen Unit  
Well No. 56  
Pearl Queen Field  
Lea County, New Mexico

New Mexico Oil Conservation Commission  
P. O. Box 2088  
Santa Fe, New Mexico 87501

Attention Mr. A. L. Porter, Jr., Secretary-Director

Gentlemen:

Shell Oil Company, acting as the Operator of the East Pearl Queen Unit, hereby respectfully requests administrative approval to drill Unit Well No. 56 at an unorthodox location 1355 feet from the north line and 2475 feet from the west line of Section 34, Township 19 South, Range 35 East, Lea County, New Mexico, as shown on the attached plat.

On August 28, 1969, Examiner Elvis A. Utz heard Case No. 4206 which presented a request for permission to drill the subject well at a location 1315 feet from the north line and 2625 feet from the west line of Section 34, Township 19 South, Range 35 East as an infill well in the East Pearl Queen Unit. In addition, the case presented a request for amendment of Order No. R-2538, which authorized the waterflood project, to establish a procedure whereby drilling of infill wells at unorthodox locations in the Unit may be approved administratively. Both of the above requests were granted by Order No. R-2538-A on September 8, 1969.

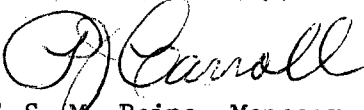
It was discovered when the location was staked that the originally selected location is directly under an high voltage electric power transmission line. A well drilled at the revised location will complete an efficient oil production pattern as well

*NSC 445  
Advised weicker?  
with Shell we would  
approve location - and  
requested he said plat  
showing loc of power line  
advised for to approve  
C-108*

as one at the originally approved location. In the interest of safety in drilling and production operations, we ask your approval of the above request.

Drilling bids will be opened on Monday, September 22, 1969, and therefore, your prompt consideration of this matter will be appreciated.

Yours very truly,

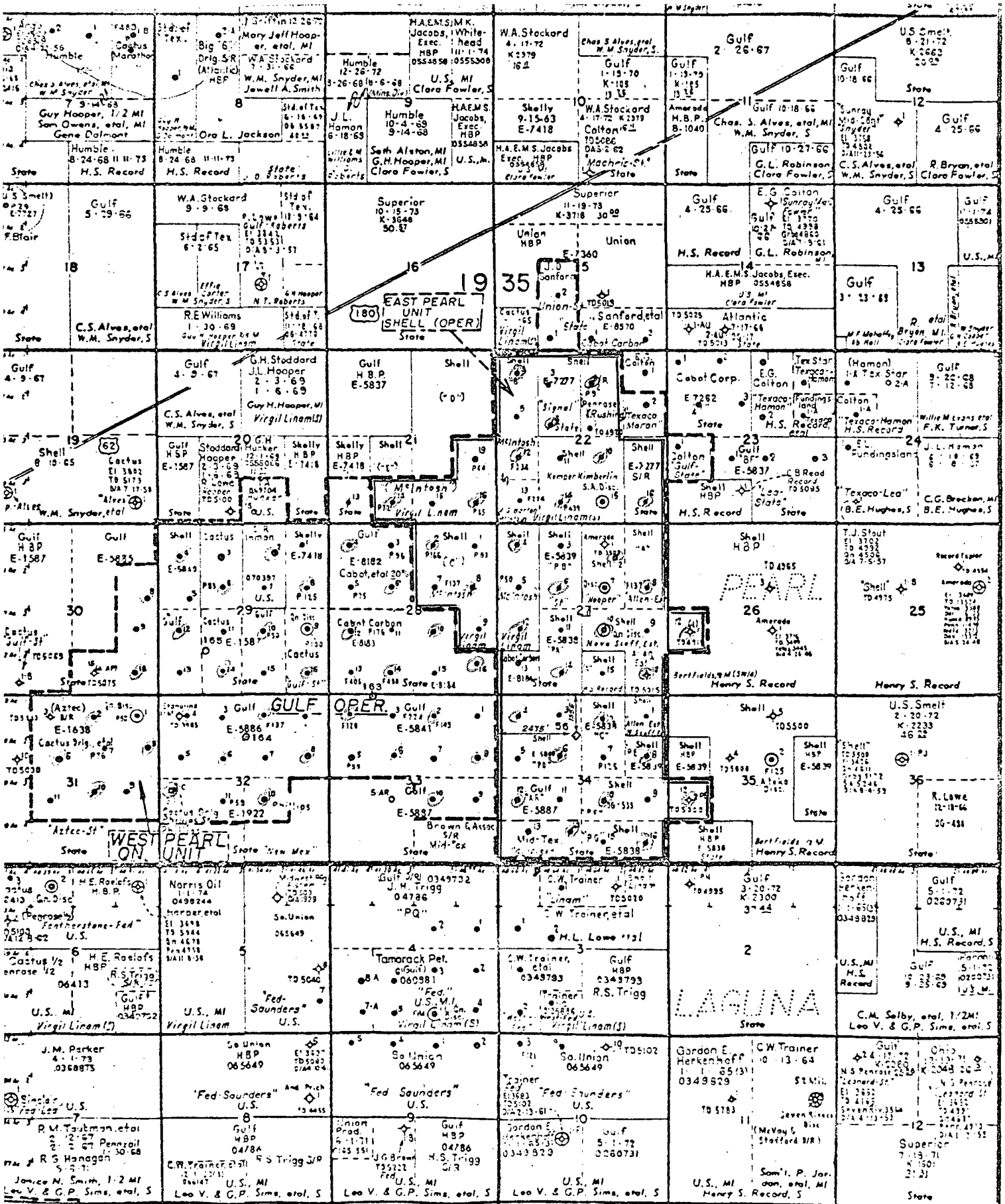
  
for S. M. Paine, Manager

Production Department - West  
Midland Division

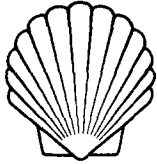
CAW:PFN

Attachment

cc - New Mexico Oil Conservation Commission  
P. O. Box 1980  
Hobbs, New Mexico 88240



- EAST PEARL QUEEN UNIT**  
**PEARL QUEEN FIELD**  
 Lea County, New Mexico  
 QUEEN FORMATION
- ◆ PROPOSED INFILL WELL
  - WEST PEARL QUEEN UNIT INFILL WELL
  - INJECTION WELL



# SHELL OIL COMPANY

PETROLEUM BUILDING  
P.O. BOX 1509  
MIDLAND, TEXAS 79701

September 29, 1969

Subject: East Pearl Queen Unit  
Well No. 56  
Pearl Queen Field  
Lea County, New Mexico

New Mexico Oil Conservation Commission  
P. O. Box 2088  
Santa Fe, New Mexico 87501

Attention Mr. D. S. Nutter,  
Chief Engineer

Gentlemen:

Attached is a plat which you requested during the telephone conversation on September 22, 1969 with our Mr. C. A. Wieder. The location shown is 150 feet west and 40 feet south of the originally proposed location which was 17 feet from the north-south high voltage electric transmission line. The location was moved 150 feet west to avoid that power line and 40 feet south to maintain an acceptable distance from the other power line shown northwest of the well location on the plat.

Our September 18, 1969 letter to Mr. A. L. Porter, Jr. presented our request for administrative approval to drill Unit Well No. 56 at an unorthodox location 1355 feet from the north line & 2475 feet from the west line of Section 34, Township 19 South, Range 35 East, Lea County, New Mexico.

Please let us know if you require any additional information. Thank you for your verbal approval on September 22, 1969 of the revised location.

Yours very truly,

S. M. Paine, Manager  
Production Department-West  
Midland Division

CAW:LP

Attachment

8 27 52

**NEW MEXICO OIL CONSERVATION COMMISSION  
WELL LOCATION AND ACREAGE DEDICATION PLAT**

Form C-102  
Supersedes C-128  
Effective 1-1-65

All distances must be from the outer boundaries of the Section.

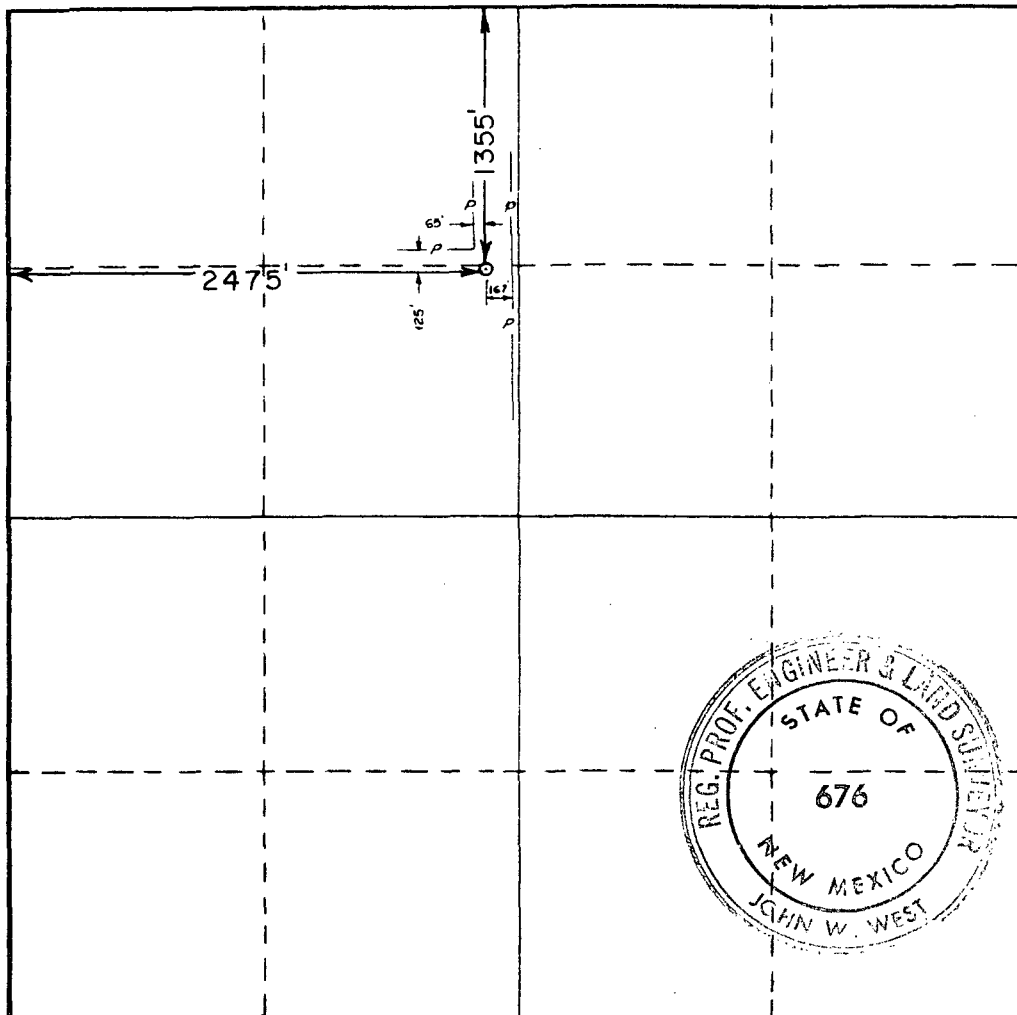
Operator <b>SHELL OIL COMPANY</b>			Lease <b>EAST PEARL QUEEN UNIT</b>		Well No. <b>56</b>
Unit Letter <b>F</b>	Section <b>34</b>	Township <b>19 SOUTH</b>	Range <b>35 EAST</b>	County <b>LEA</b>	
Actual Footage Location of Well: <b>1355</b> feet from the <b>NORTH</b> line and <b>2475</b> feet from the <b>WEST</b> line					
Ground Level Elev.	Producing Formation		Pool		Dedicated Acreage:  Acres

1. Outline the acreage dedicated to the subject well by colored pencil or hachure marks on the plat below.
2. If more than one lease is dedicated to the well, outline each and identify the ownership thereof (both as to working interest and royalty).
3. If more than one lease of different ownership is dedicated to the well, have the interests of all owners been consolidated by communitization, unitization, force-pooling, etc?

☐ Yes    ☐ No    If answer is "yes," type of consolidation \_\_\_\_\_

If answer is "no," list the owners and tract descriptions which have actually been consolidated. (Use reverse side of this form if necessary.) \_\_\_\_\_

No allowable will be assigned to the well until all interests have been consolidated (by communitization, unitization, forced-pooling, or otherwise) or until a non-standard unit, eliminating such interests, has been approved by the Commission.



**CERTIFICATION**

I hereby certify that the information contained herein is true and complete to the best of my knowledge and belief.

*J. D. Dusen*  
Name  
*Staff Operations Eng'r*  
Position  
*Shell Oil Co.*  
Company

Date  
**9-29-69**

I hereby certify that the well location shown on this plat was plotted from field notes of actual surveys made by me or under my supervision, and that the same is true and correct to the best of my knowledge and belief.

Date Surveyed  
**SEPTEMBER 12, 1969**  
Registered Professional Engineer  
and/or Land Surveyor

*John W. West*  
Certificate No. **676**

