

# Mobil Oil Corporation



P.O. BOX 633  
MIDLAND, TEXAS 79701

January 24, 1973

New Mexico Oil Conservation Commission (3)  
P. O. Box 2088  
Santa Fe, New Mexico 87501

Attention Mr. A. L. Porter, Jr.

UNORTHODOX LOCATION  
MOBIL OIL CORPORATION'S  
E. O. CARSON WELL #9  
TUBB GAS (TUBB) POOL  
LEA COUNTY, NEW MEXICO

Gentlemen:

*West*  
Mobil Oil Corporation respectfully requests authority to complete the subject well in the Tubb Gas (Tubb) Pool at an unorthodox location under the provisions of Rule 104 (F). Well #9 is located in Unit E, 2051 ft from the north line and 589 ft from the east line of Sec. 33, T21S, R37E, Lea County, New Mexico.

Well #9 was originally drilled to a total depth of 6630 ft and completed in the Drinkard Pool on September 25, 1946. It was deepened to a total depth of 8172 ft and completed in the Hare (Simpson) Pool on September 19, 1947. On December 7, 1972 the Commission approved Mobil's application to plug back from the Hare (Simpson) Pool and complete in the Paddock (Paddock) Pool.

Mobil Oil Corporation now desires to dually complete this well in the Paddock (Paddock) Pool and the Tubb Gas (Tubb) Pool. This well violates the spacing requirements for a gas well since it is less than 660 ft from the outer boundary of the proration unit.

In support of this request Form C-102 is submitted in triplicate.

The offset operators are being furnished a copy of this application as their notification and request for waivers of objection. These offset operators are:

Amerada Hess Corp., P. O. Box 2040, Tulsa, Oklahoma 74102 (copy)  
" Drawer 817, Seminole, Texas 79360

NMOCC  
Santa Fe, NM

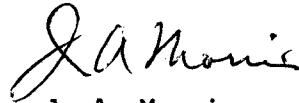
-2-

January 24, 1973

Amoco Production Co., P. O. Box 3092, Houston, Texas 77001

Gulf Oil Co., P. O. Box 1150, Midland, Texas 79701

Yours truly,



J. A. Morris  
Production Engineering Supervisor

ADBond/cs  
Attachments

cc: Oil Conservation Commission - Hobbs (w/attach)  
Offset Operators (w/attach)

NEW MEXICO OIL CONSERVATION COMMISSION  
WELL LOCATION AND ACREAGE DEDICATION PLAT

Form C-102  
Supersedes C-128  
Effective 1-1-65

All distances must be from the outer boundaries of the Section.

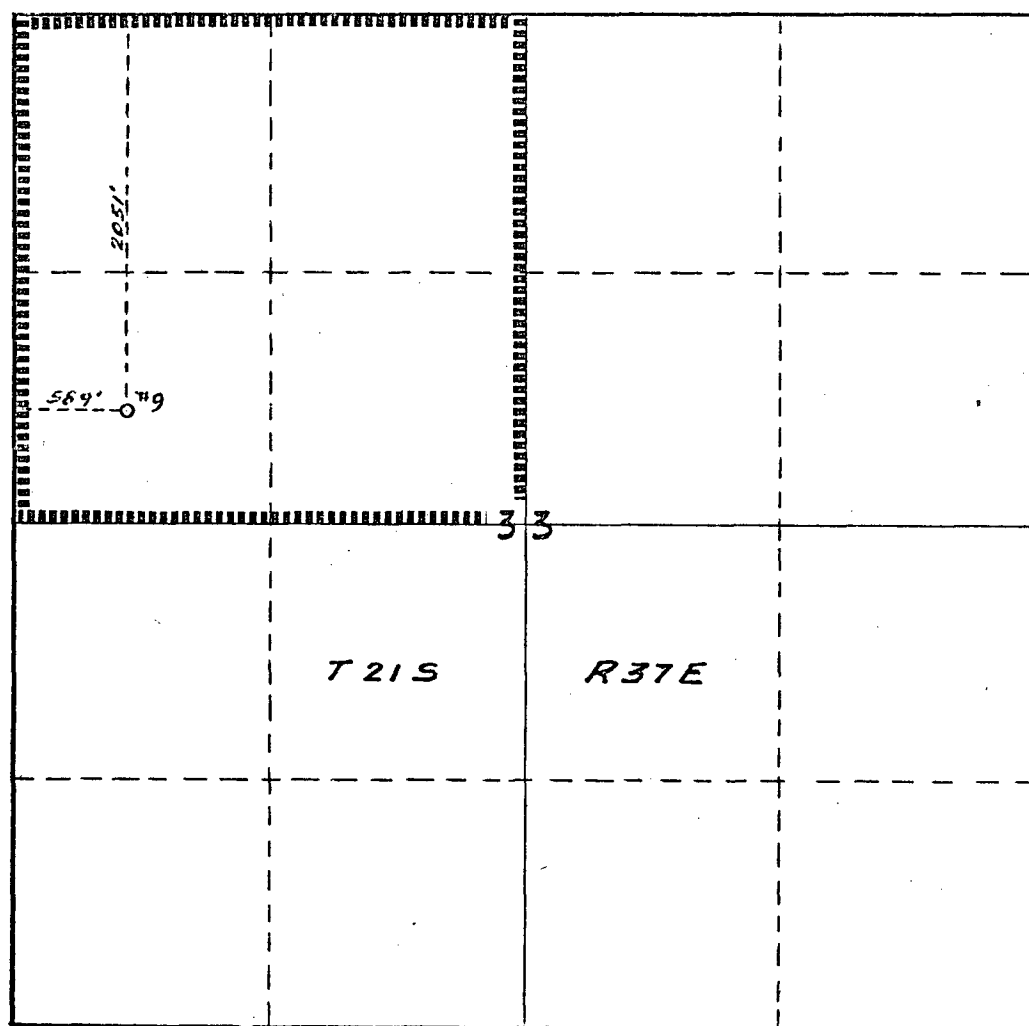
Operator <b>Mobil Oil Corporation</b>			Lease <b>E. O. Carson</b>		Well No. <b>9</b>
Unit Letter <b>E</b>	Section <b>33</b>	Township <b>21-S</b>	Range <b>37-E</b>	County <b>Lea</b>	
Actual Footage Location of Well: <b>2051</b> feet from the <b>North</b> line and <b>589</b> feet from the <b>West</b> line					
Ground Level Elev. <b>3469</b>	Producing Formation <b>Tubb</b>		Pool <b>Tubb Gas (Tubb)</b>		Dedicated Acreage: <b>160</b> Acres

1. Outline the acreage dedicated to the subject well by colored pencil or hachure marks on the plat below.
2. If more than one lease is dedicated to the well, outline each and identify the ownership thereof (both as to working interest and royalty).
3. If more than one lease of different ownership is dedicated to the well, have the interests of all owners been consolidated by communitization, unitization, force-pooling, etc?

☐ Yes ☐ No If answer is "yes," type of consolidation \_\_\_\_\_

If answer is "no," list the owners and tract descriptions which have actually been consolidated. (Use reverse side of this form if necessary.) \_\_\_\_\_

No allowable will be assigned to the well until all interests have been consolidated (by communitization, unitization, forced-pooling, or otherwise) or until a non-standard unit, eliminating such interests, has been approved by the Commission.



CERTIFICATION

I hereby certify that the information contained herein is true and complete to the best of my knowledge and belief.

*A. D. Bond*

Name  
**A. D. Bond**  
Position  
**Proration Staff Assistant**  
Company  
**Mobil Oil Corporation**

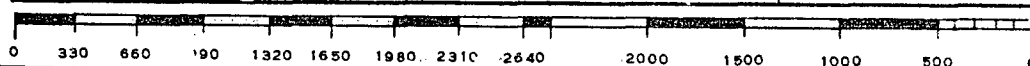
Date  
**January 23, 1973**

I hereby certify that the well location shown on this plat was plotted from field notes of actual surveys made by me or under my supervision, and that the same is true and correct to the best of my knowledge and belief.

Date Surveyed

Registered Professional Engineer  
and/or Land Surveyor

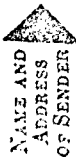
Certificate No.



MOUL OIL CORPORATION

P. O. BOX 633

MIDLAND TEXAS 79701



Indicate type of mail:  
☒ REGISTERED ☐ O.D.  
☐ CERTIFIED

Affix stamp here if issued as certificate of mailing or for additional copies of this bill.

POSTMARK AND DATE OF RECEIPT

NUMBER OF ARTICLE	NAME OF ADDRESSEE, STREET, AND POST OFFICE ADDRESS	POSTAGE	FEE	P. R. FEE	UNIT. DIS. PER	ACTUAL VALUE	SURCHARGE	REMARKS
1 33735	GULF OIL Company	8	2.45			1.000		
2	Box 1150							
3	Midland Texas 79701							
4								
5 33736	Amoco Production Company	8	2.45					
6	Box 3092							
7	Houston Texas 77001							
8								
9 33737	Amerenda Hess Corp.	8	2.45					
10	Drawer 817							
11	Seminole Texas 79360							
12								
13								
14								
15								
16								
17								
18								
19								
20								

TOTAL NO. OF PIECES LISTED BY SENDER 3

TOTAL NO. OF PIECES RECD AT P.O.

POSTMASTER, PER (Name of receiving employee)

"Show under 'Remarks' class postage paid if other than first or if international

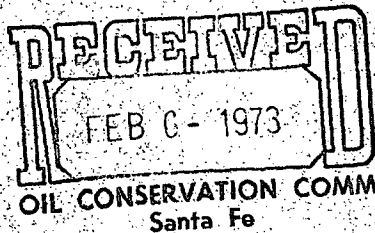
POD Form 3877, Nov. 1968

APPLICATION FOR REGISTRATION OR CERTIFICATION

(Surcharges are not required on international registered mail)



J. C. Burton  
Division Engineer



**Amoco Production Company**

500 Jefferson Building  
P.O. Box 3092  
Houston, Texas 77001

January 30, 1973

File: TBM-986.51NM-1838

Re: Unorthodox Location  
E. O. Carson Well No. 9  
Tubb Gas (Tubb) Pool  
Lea County, New Mexico

New Mexico Oil Conservation Commission  
P. O. Box 2088  
Santa Fe, New Mexico 87501

Attention: Mr. A. L. Porter, Jr.

Gentlemen:

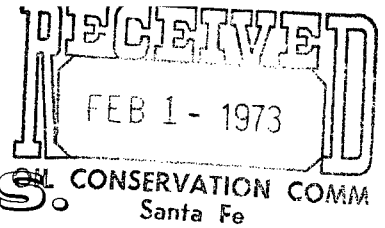
We have received a copy of Form C-102, Well Location and Acreage Plat, prepared by Mobil Oil Corporation requesting an unorthodox location for their E. O. Carson Well No. 9. This well violates the spacing requirements for a gas well as it is less than 660 feet from the outer boundary of the proration unit.

As an offset operator, Amoco Production Company, has no objection to the granting of this unorthodox location and hereby waives notice and hearing.

Very truly yours,

cc: Mobil Oil Company  
P. O. Box 633  
Midland, Texas 79701

EHW:as



# Gulf Oil Company - U.S.

EXPLORATION AND PRODUCTION DEPARTMENT  
MIDLAND DISTRICT

W. B. Hopkins  
DISTRICT MANAGER  
J. L. Pike  
DISTRICT PRODUCTION  
MANAGER  
J. A. Hord  
DISTRICT EXPLORATION  
MANAGER  
M. B. Moseley  
DISTRICT SERVICES MANAGER

P. O. Drawer 1150  
Midland, Texas 79701

January 30, 1973

Oil Conservation Commission  
State of New Mexico  
P. O. Box 2088  
Santa Fe, New Mexico 87501

Attention: Mr. A. L. Porter, Jr.

Re: Request for Unorthodox Location and  
Multiple Completion, Mobil Oil  
Corporation's E. O. Carson Well No. 9  
Paddock (Paddock) Pool and Tubb Gas  
(Tubb) Pool, Lea County, New Mexico

Gentlemen:

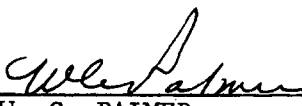
This is to advise that Gulf Oil Corporation has been given due notice that Mobil Oil Corporation is requesting permission for an unorthodox location and multiple completion authority for their E. O. Carson Well No. 9 in the above mentioned fields. We have no objection to the granting of this application for the above well which is located:

2051 feet from the North Line  
and 589 feet from the East Line  
of Section 33, T-21S, R-37E,  
Lea County, New Mexico

Executed this 30th day of January, 1973.

Yours very truly,

GULF OIL CORPORATION

BY   
W. C. PALMER  
District Engineer

FWT:jmc

