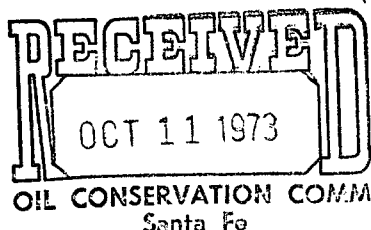




L. P. Thompson  
Division Manager  
Production Department  
Hobbs Division

Western Hemisphere Petroleum Division  
Continental Oil Company  
P.O. Box 460  
1001 North Turner  
Hobbs, New Mexico 88240  
(505) 393-4141



*NSL-623*

*No waiting  
no affecting operators  
R-2403-A*

October 8, 1973

New Mexico Oil Conservation Commission (3)  
P. O. Box 2088  
Santa Fe, New Mexico 87501

Attention Mr. A. L. Porter, Jr.,  
Secretary-Director

Gentlemen:

Subject: Application for Approval for Unorthodox Location  
for MCA Well No. 352

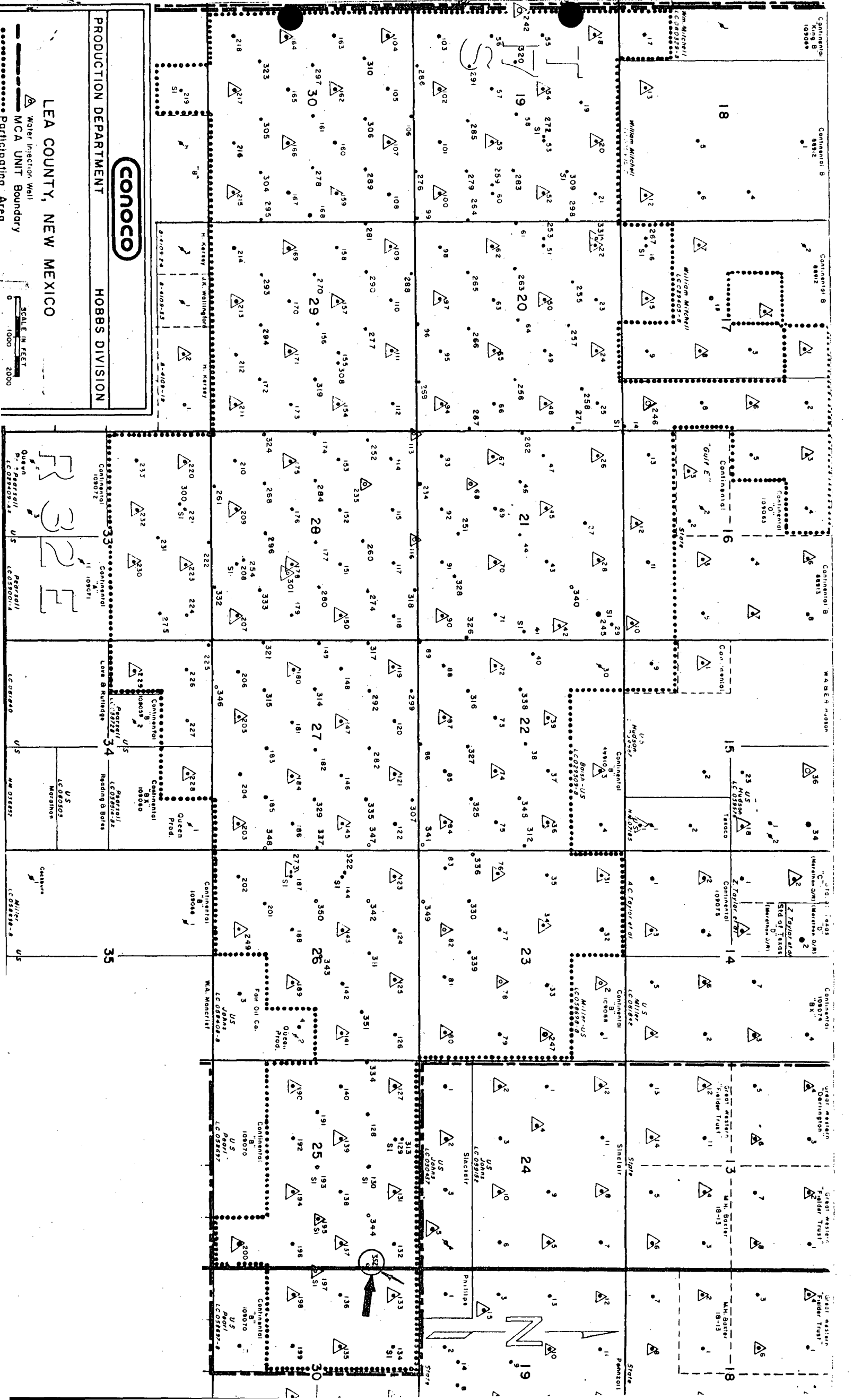
Continental Oil Company, as operator for the MCA Unit, hereby requests approval under the provisions of Order No. R-2403-A to drill MCA Unit Well No. 352 at a location 1345' from the North line and 25' from East line (Unit H) of Section 25, T-17S, R-32E, Lea County, New Mexico.

As shown on the attached plat, this location is 25' from the nearest quarter-quarter section boundary line. The well is being drilled in conjunction with our current in-fill drilling evaluation program, and should result in the more efficient recovery of oil in this immediate area.

Since this well is located at least 1/4 mile from the nearest outside boundary of the Unit, it is respectfully requested that immediate approval of this location be given.

Yours very truly,

pc  
cc: NMOCC - Hobbs  
USGS (2) - Hobbs  
RLA, JJB, JWK



PRODUCTION DEPARTMENT

**CONOCO**

HOBBS DIVISION

LEA COUNTY, NEW MEXICO

Water Injection Well

MCA UNIT Boundary

Participating Area

SCALE IN FEET

0 1000 2000

33

34

35

33

34

35

33

34

35