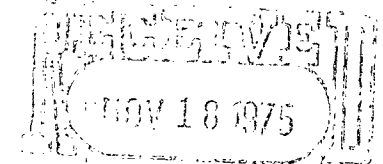


**NEWMONT OIL COMPANY**

ROOM 303, FIRST NATIONAL BANK BUILDING  
P. O. Box 1305

ARTESIA, NEW MEXICO 88210



OIL CONSERVATION COMM.

Santa Fe

NEW MEXICO  
DISTRICT OFFICE

November 17, 1975

*NSL-737*

*Rule 2 R-4483*

*Rec upon receipt of  
approval from Artesia*

Mr. J. D. Ramey  
Secretary-Director  
State of New Mexico  
Oil Conservation Commission  
P. O. Box 2088  
Santa Fe, New Mexico 87501

Re: Drill unorthodox producing well,  
West Loco Hills Grayburg No. 4 Sand  
Unit, Loco Hills, Queen - Grayburg -  
San Andres Field, Eddy County, New  
Mexico

Dear Mr. Ramey:

Newmont Oil Company (Operator of West Loco Hills Grayburg No. 4  
Sand Unit) request administrative approval to drill the following unorthodox  
location:

13-11 (Federal lease) located 2310' FNL & 1175' FEL of  
Section 12, Township 18 South, Range 29 East,  
West Loco Hills Queen-Grayburg-San Andres Field,  
Eddy County, New Mexico.

Administrative approval for infield unorthodox locations were  
granted under Order No. R-4483 dated February 21, 1973.

Attached is Federal Form 9-331C application to drill, map showing  
location, and N.M.O.C.C. Form C-102.

If additional information is required please call us collect at  
746-9846. Thank you for your cooperation in the above matter.

Yours truly,

*Charles C. Joy*

Charles C. Joy  
District Superintendent

CCJ/saf  
Attachments

*Tract 13 Well No. 11*

UNITED STATES  
DEPARTMENT OF THE INTERIOR  
GEOLOGICAL SURVEY

## APPLICATION FOR PERMIT TO DRILL, DEEPEN, OR PLUG BACK

## 1a. TYPE OF WORK

DRILL ☒DEEPEN ☐PLUG BACK ☐

## b. TYPE OF WELL

OIL  
WELL ☒GAS  
WELL ☐

OTHER

## 2. NAME OF OPERATOR

Newmont Oil Company

## 3. ADDRESS OF OPERATOR

P. O. Box 1305, Artesia, New Mexico 88210

## 4. LOCATION OF WELL (Report location clearly and in accordance with any State requirements.\*)

At surface

2310' FNL &amp; 1175 FEL of Section 12

At proposed prod. zone

## 14. DISTANCE IN MILES AND DIRECTION FROM NEAREST TOWN OR POST OFFICE\*

## 15. DISTANCE FROM PROPOSED\*

LOCATION TO NEAREST  
PROPERTY OR LEASE LINE, FT.  
(Also to nearest drig. line, if any)18. DISTANCE FROM PROPOSED LOCATION\*  
TO NEAREST WELL, DRILLING, COMPLETED,  
OR APPLIED FOR, ON THIS LEASE, FT.

## 21. ELEVATIONS (Show whether DF, RT, GR, etc.)

3521' G.L.

## 23.

## PROPOSED CASING AND CEMENTING PROGRAM

SIZE OF HOLE	SIZE OF CASING	WEIGHT PER FOOT	SETTING DEPTH	QUANTITY OF CEMENT
10 3/4"	8 5/8"	24# or 23#	340'	100 Sacks
7 7/8"	4 1/2"	10 1/2# or 9 1/2#	2794'	Circulation or 500 sacks

Drill unorthodox location in compliance with NMOCC Order No. R-4483 dated February 21, 1973. This infill well will recover oil that has not been recovered by 13-4 and 13-7 from pattern formed by injection wells 1-7, 1-8, 6-1, 13-1, 13-2 and 13-5.

Fresh water from our system will be used to drill to approximately 2400' and fresh water mud from this point to T.D. Cuttings will be disposed of in pit.

Note...Road plat, flowline plat and layout of rig and equipment attached.

IN ABOVE SPACE DESCRIBE PROPOSED PROGRAM: If proposal is to deepen or plug back, give data on present productive zone and proposed new productive zone. If proposal is to drill or deepen directionally, give pertinent data on subsurface locations and measured and true vertical depths. Give blowout preventer program, if any.

## 24.

SIGNED

*Charles C. Joy*

TITLE

Superintendent

DATE

11/17/75

(This space for Federal or State office use)

PERMIT NO.

APPROVAL DATE

APPROVED BY

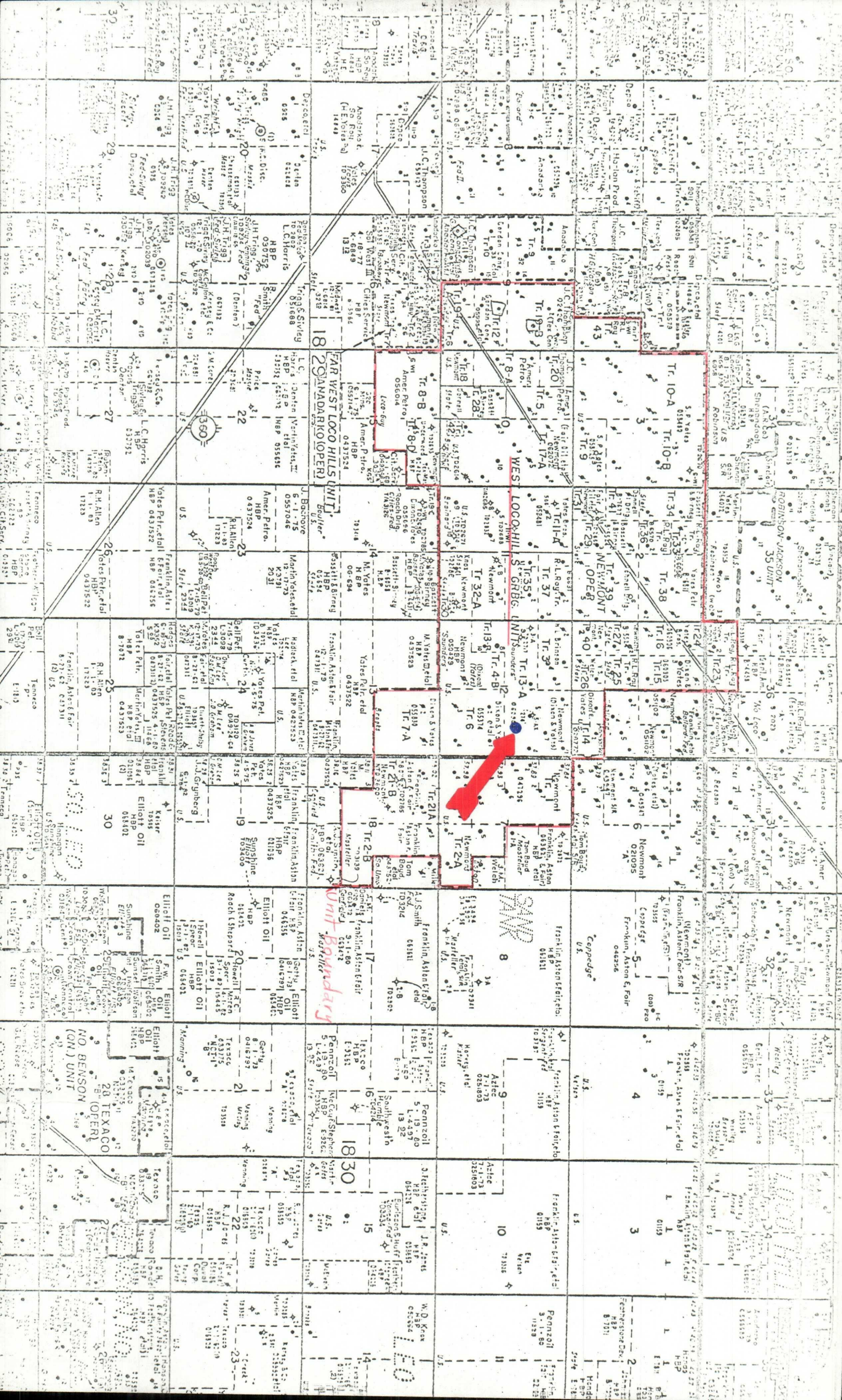
TITLE

DATE

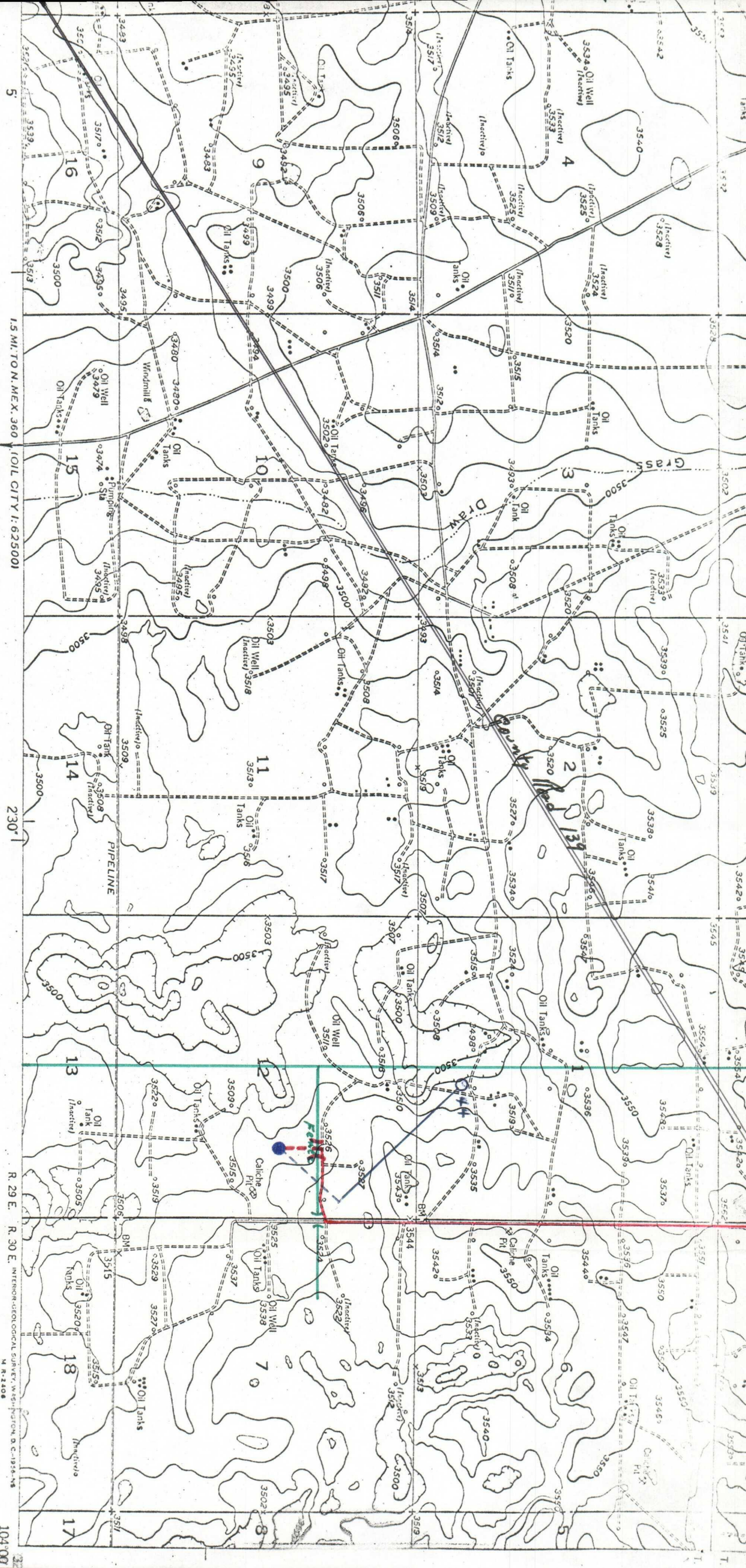
CONDITIONS OF APPROVAL, IF ANY:

\*See Instructions On Reverse Side

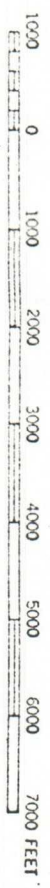








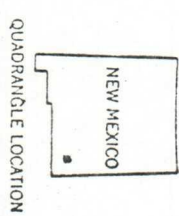
SCALE 1:24000



Heavy duty  
Medium duty  
Unimproved dirt

ROAD CLASSIFICATION

U.S. Route  
State Route



CONTOUR INTERVAL 10 FEET  
DATUM IS MEAN SEA LEVEL

RED LAKE SE, N. MEX.



NEW MEXICO OIL CONSERVATION COMMISSION  
WELL LOCATION AND ACREAGE DEDICATION PLAT

Form C-102  
Supersedes C-128  
Effective 1-1-65

All distances must be from the outer boundaries of the Section.

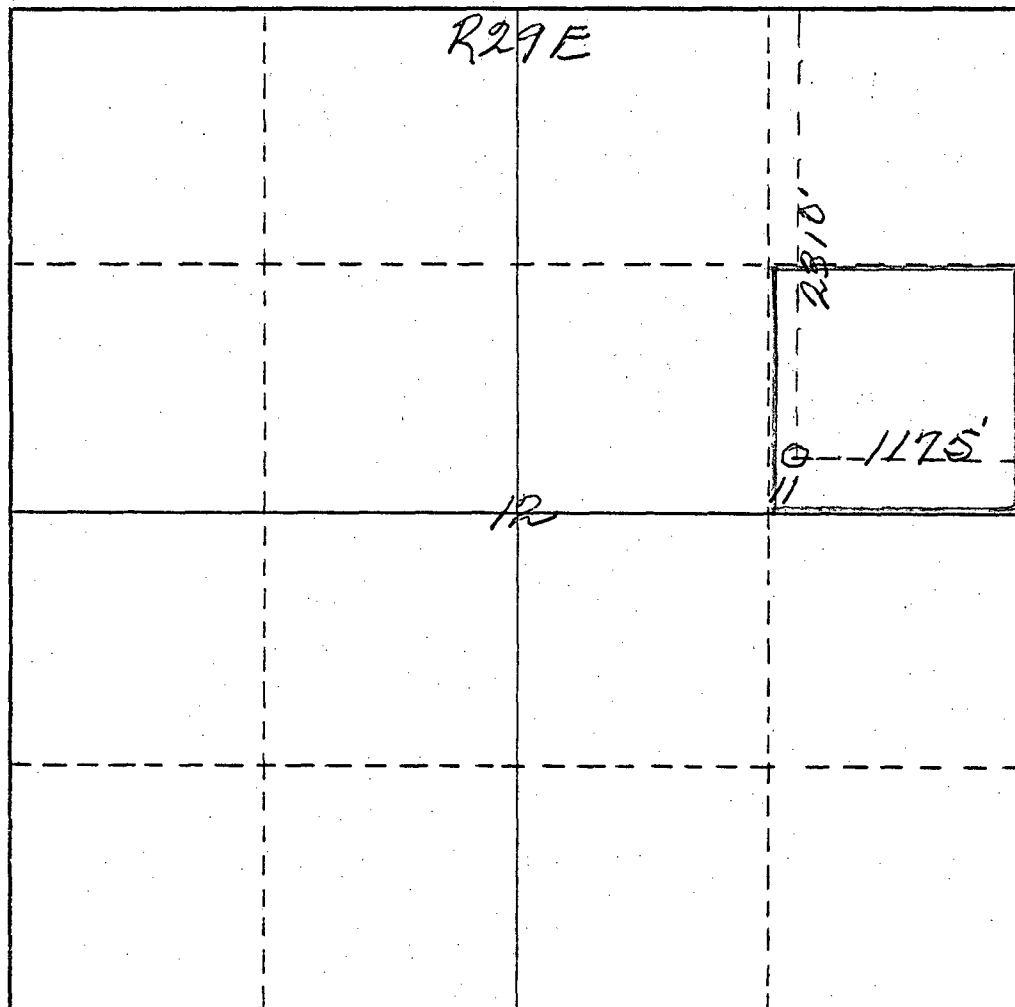
Operator <i>Newmont Oil Company</i>		Lease <i>West Loca Hills Unit Tract #13</i>		Well No. <i>11</i>
Unit Letter <i>H</i>	Section <i>12</i>	Township <i>18 South</i>	Range <i>29 East</i>	County <i>Eddy</i>
Actual Footage Location of Well: <i>2310</i> feet from the <i>North</i> line and <i>1175</i> feet from the <i>East</i> line				
Ground Level Elev. <i>3521</i>	Producing Formation <i>Loco Hills</i>	Pool <i>Loco Hills Over Grb SA.</i>	Dedicated Acreage: <i>40</i> Acres	

1. Outline the acreage dedicated to the subject well by colored pencil or hachure marks on the plat below.
2. If more than one lease is dedicated to the well, outline each and identify the ownership thereof (both as to working interest and royalty).
3. If more than one lease of different ownership is dedicated to the well, have the interests of all owners been consolidated by communitization, unitization, force-pooling, etc?

☐ Yes ☐ No If answer is "yes," type of consolidation \_\_\_\_\_

If answer is "no," list the owners and tract descriptions which have actually been consolidated. (Use reverse side of this form if necessary.) \_\_\_\_\_

No allowable will be assigned to the well until all interests have been consolidated (by communitization, unitization, forced-pooling, or otherwise) or until a non-standard unit, eliminating such interests, has been approved by the Commission.



CERTIFICATION

I hereby certify that the information contained herein is true and complete to the best of my knowledge and belief.

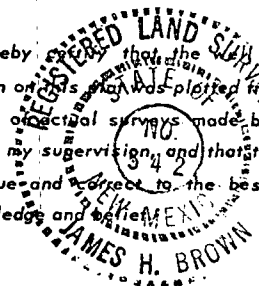
*James H. Brown*  
Name  
Office Manager

Position  
NEWMONT OIL COMPANY

Company  
November 17, 1975

Date

I hereby certify that the well location shown on this plat was plotted from field notes of actual surveys made by me or under my supervision, and that the same is true and correct to the best of my knowledge and belief.



Date Surveyed  
*November 17th 1975*  
Registered Professional Engineer  
and/or Land Surveyor

*James H. Brown*  
Certificate No.  
*542*

