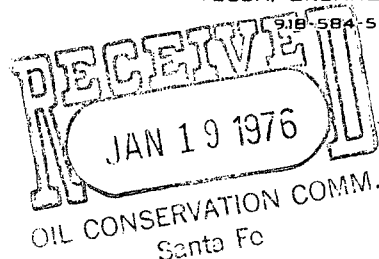


NSL - 749  
104 F

AMERADA HESS CORPORATION

January 16, 1976

*Re - assign proration unit to well # 4*  
P. O. BOX 2040  
TULSA, OKLAHOMA 74102  
918-584-5554



New Mexico Oil Conservation Commission  
P. O. Box 2088  
State Land Office Building  
Santa Fe, New Mexico 87501

Attention: Mr. D. S. Nutter,  
Chief Engineer

Re: Request for Approval of Replacement Well in Non-Standard Gas Proration Unit, Eumont Gas Pool, Lea County, New Mexico

Gentlemen:

Amerada Hess Corporation requests permission to drill the State 'J' No. 4 at a location 1980' FSL and 2081' FWL of Section 2-20S-36E, Lea County, New Mexico for completion in the Eumont Gas Pool as a replacement well for the State 'J' No. 3 Unit Well for the communitized 440-acre non-standard gas proration unit consisting of the following acreage:

Township 20 South, Range 36 East, NM PM  
S/2, SW/4 NW/4 and E/2 NW/4 of Section 2

This unit is operated under authority contained in Administrative Order NSP-269, dated June 3, 1956.

The State 'J' No. 3, located 1980 feet from the south and west lines of Section 2, is dually completed in the Eumont Gas Pool Zone and the Monument Grayburg Oil Zone under provisions of Order No. DC-294, dated April 1, 1956. We are experiencing mechanical difficulties pumping the Grayburg oil from the completion interval below the packer separating the two completion intervals and propose to abandon the upper Eumont Gas Pool Zone and produce the well from the Grayburg Zone single completion.

We believe the approval of this request will result in an increased production potential from both intervals.

Very truly yours,

AMERADA HESS CORPORATION

*Gilbert E. Miller*  
Gilbert E. Miller  
Conservation Supervisor

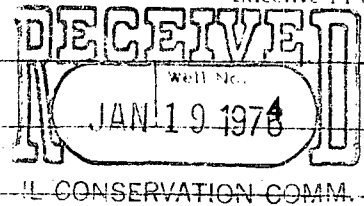
GEM:bn

# Amended

## N MEXICO OIL CONSERVATION COMMISSION WELL LOCATION AND ACREAGE DEDICATION PLAT

Form C-102  
Supersedes C-128  
Effective 1-1-65

All distances must be from the outer boundaries of the Section



Operator <b>Amerada Hess Corporation</b>		Lease <b>State J GAS COMM</b>		
Unit Letter <b>K</b>	Section <b>2</b>	Township <b>20 South</b>	Range <b>36 East</b>	County <b>Lea</b>
Actual Footage Location of Well: <b>1980</b> feet from the <b>South</b> line and <b>2081</b> feet from the <b>West</b> line Santa Fe line				
Ground Level Elev. <b>3588.4</b>	Producing Formation <b>Queen</b>	Pool <b>Eumont Gas</b>	Dedicated Acreage <b>440</b> Acres	

1. Outline the acreage dedicated to the subject well by colored pencil or hatchure marks on the plat below.
2. If more than one lease is dedicated to the well, outline each and identify the ownership thereof (both as to working interest and royalty).
3. If more than one lease of different ownership is dedicated to the well, have the interests of all owners been consolidated by communitization, unitization, force-pooling, etc?

☒ Yes ☐ No If answer is "yes," type of consolidation Communitization

If answer is "no," list the owners and tract descriptions which have actually been consolidated (use reverse side of this form if necessary.)

No allowable will be assigned to the well until all interests have been consolidated (by communitization, unitization, forced-pooling, or otherwise) or until a non-standard unit, eliminating such interests, has been approved by the Commission.

### CERTIFICATION

I hereby certify that the information contained herein is true and complete to the best of my knowledge and belief.

*E. Griffin*

Name

E. Griffin

Position

Supervisor Tech/Drig. Adm. Ser

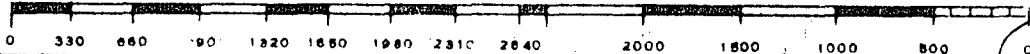
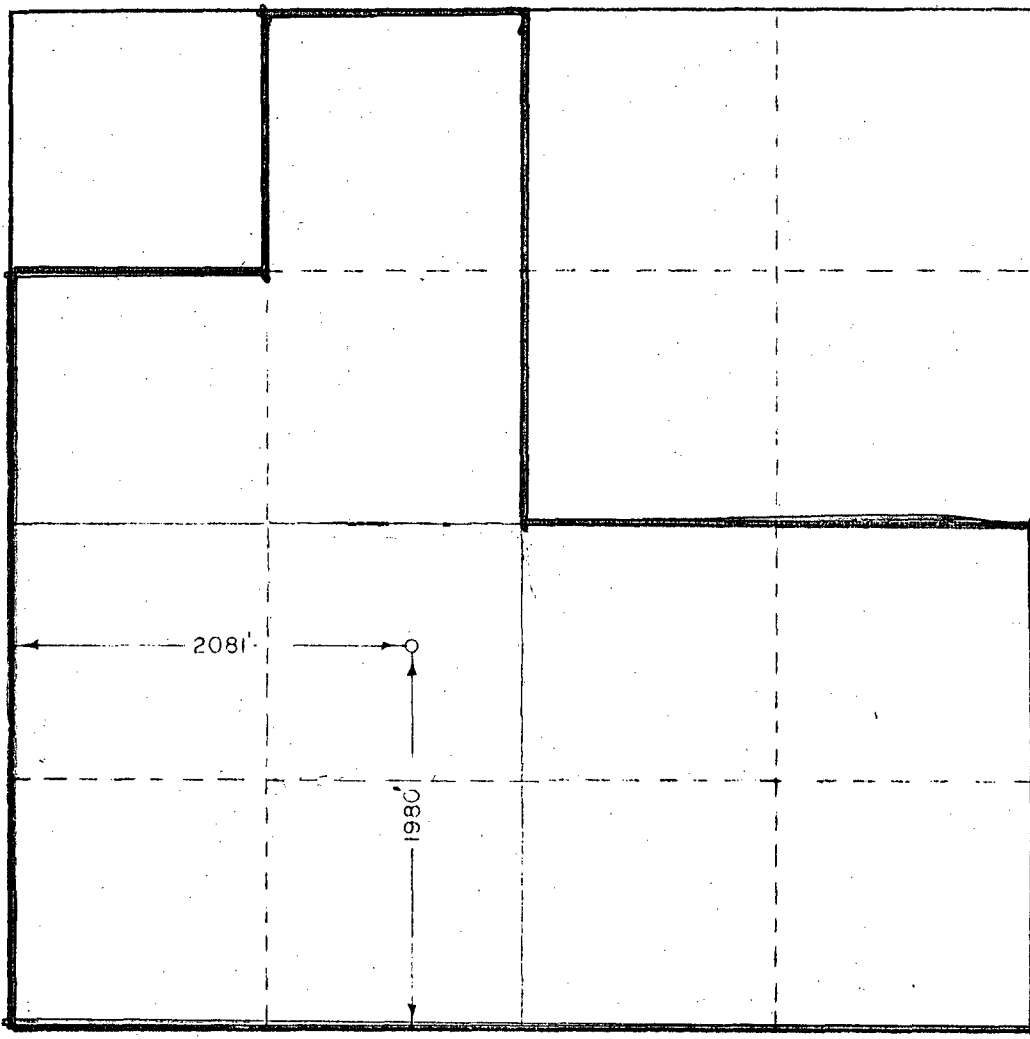
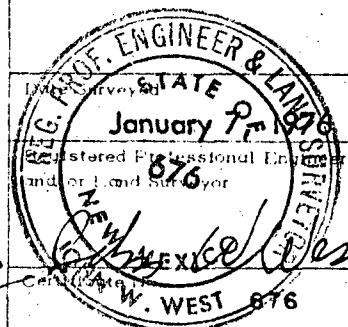
Company

Amerada Hess Corporation

Date

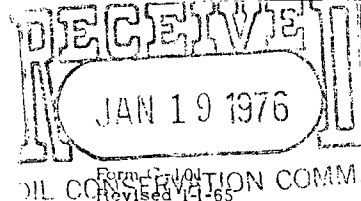
Jan. 16, 1976

I hereby certify that the well location shown on this plat was plotted from field notes of actual surveys made by me or under my supervision, and that the same is true and correct to the best of my knowledge and belief.



NO. OF COPIES RECEIVED	
DISTRIBUTION	
SANTA FE	
FILE	
U.S.G.S.	
LAND OFFICE	
OPERATOR	

# NEW MEXICO OIL CONSERVATION COMMISSION



AMENDED

5A. Indicate Type of Lease

STATE ☒ FEE ☐

5. State Oil & Gas Lease No.

B-1656

## APPLICATION FOR PERMIT TO DRILL, DEEPEN, OR PLUG BACK

1a. Type of Work		7. Unit Agreement Name	
b. Type of Well OIL WELL <input type="checkbox"/> GAS WELL <input checked="" type="checkbox"/> OTHER <input type="checkbox"/>		8. Farm or Lease Name State "J" Gas Comm.	
2. Name of Operator Amerada Hess Corporation, Attention Drilling Services		9. Well No. 4	
3. Address of Operator P. O. Box 2040, Tulsa, Oklahoma 74102		10. Field and Pool, or Wildcat Eumont/Eumont	
4. Location of Well UNIT LETTER <u>K</u> LOCATED <u>2081</u> FEET FROM THE <u>West</u> LINE AND <u>1980</u> FEET FROM THE <u>South</u> LINE OF SEC. <u>2</u> TWP. <u>20S</u> RGE. <u>36E</u> NMPM		12. County Lea	
19. Proposed Depth 3700'		19A. Formation Eumont Gas	
20. Rotary or C.T. Rotary		21. Elevations (Show whether DF, RT, etc.) Gr. 3588'	
21A. Kind & Status Plug. Bond Blanket		21B. Drilling Contractor Cactus Drilling Co.	
22. Approx. Date Work will start January 12, 1976			

### 23. PROPOSED CASING AND CEMENT PROGRAM

SIZE OF HOLE	SIZE OF CASING	WEIGHT PER FOOT	SETTING DEPTH	SACKS OF CEMENT	EST. TOP
12 1/4"	8 5/8" OD	24#	400'	300	Surface
7 7/8"	4 1/2" OD	9.5#	3700'	1200	Surface

Plan to drill a 12 1/4" hole to 400', set and cement 8 5/8" OD csg at 400' with 300 sx cmt, WOC for approx. 18 hrs, drill a 7 7/8" hole out under 8 5/8" csg to a proposed TD of 3700' or a sufficient depth to test the Eumont gas zone, log well and if indicate productive, run, set and cement 4 1/2" csg at 3700' and single complete in the Eumont gas formation.

### BLOWOUT EQUIPMENT AS FOLLOWS:

10" Cameron, Type "F", Ser. 900 with double hydraulic w/Payne closing unit. Gas separator and degasser complete with auromatic choke.  
All BOP equipment will be checked regularly by a Cactus Drilling Co. driller and Amerada Hess well site drilling supervisor.

IN ABOVE SPACE DESCRIBE PROPOSED PROGRAM; IF PROPOSAL IS TO DEEPEN OR PLUG BACK, GIVE DATA ON PRESENT PRODUCTIVE ZONE AND PROPOSED NEW PRODUCTIVE ZONE. GIVE BLOWOUT PREVENTER PROGRAM, IF ANY.

I hereby certify that the information above is true and complete to the best of my knowledge and belief.

Signed E. L. Lippin Title Supervisor Tech/Drig Adm. Services Date January 16, 1976  
(This space for State Use)

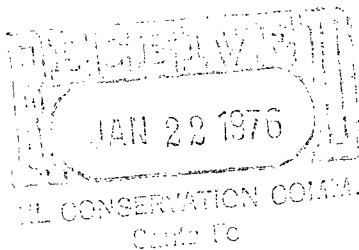
APPROVED BY \_\_\_\_\_ TITLE \_\_\_\_\_ DATE \_\_\_\_\_  
CONDITIONS OF APPROVAL, IF ANY:

OIL CONSERVATION COMMISSION  
Hobbs DISTRICT

OIL CONSERVATION COMMISSION  
BOX 2088  
SANTA FE, NEW MEXICO

DATE January 19, 1976

RE: Proposed MC \_\_\_\_\_  
Proposed DHC \_\_\_\_\_  
Proposed NSL \_\_\_\_\_  
Proposed SWD \_\_\_\_\_  
Proposed WFX \_\_\_\_\_  
Proposed PMX \_\_\_\_\_  
NSP X



Gentlemen:

I have examined the application dated \_\_\_\_\_  
for the Amerada Hess Corp. State "J" #4-K 2-20-36  
Operator Lease and Well No. Unit, S-T-R

and my recommendations are as follows:

O.K.---J.S.

Yours very truly,

*Jerry Sexton*