

Mobil Oil Corporation

THREE GREENWAY PLAZA EAST - SUITE 800
HOUSTON, TEXAS 77046

September 16, 1976

SEP 23 1976

Oil Conservation Commission

Oil Conservation Commission (3)
State of New Mexico
P. O. Box 2088
Santa Fe, New Mexico 87501

ATTN: Mr. Joe D. Ramey

NSL - 793

104 F

due Oct 13

Unorthodox Well Location
Mobil Oil Corporation's
Jicarilla B, Well #2-A
Blanco Mesaverde Pool
Rio Arriba County, New Mexico

Gentlemen:

Mobil Oil Corporation respectfully requests administrative approval to drill the subject well at an unorthodox location under the provisions of Rule 104-F. This well cannot be drilled at a standard location because of Highway ~~357~~₅₃₇ traversing the lease in this vicinity.

Jicarilla B, 2-A is located in Unit O, 1149 ft. from the south line and 1391 ft. from the east line of Sec. 19, T26N, R3W, Rio Arriba County New Mexico. Because the location of this well does not comply with Order R-1670 as amended for the Blanco Mesaverde Pool, this request is made.

Supporting documents being submitted in triplicate are:

1. Certified plat showing the location of this well and Hwy. ~~357~~₅₃₇.
2. NMOCC Form C-102 - Well Location and Acreage Dedication Plat.

Southern Union Production Company, 8350 North Central Expressway, Campbell Centre, Suite 1700, Dallas, Texas 75206, the only offset operator, is being notified of this application by registered mail.

Yours truly,



J. A. Morris
Regulatory Engineering Supervisor

ADBond/to
Attachments
cc: Offset Operator (w/attach.)
NMOCC-Aztec (w/attach.)

NEW MEXICO OIL CONSERVATION COMMISSION
WELL LOCATION AND ACREAGE DEDICATION PLAT

Form C-102
Supersedes C-128
Effective 1-1-65

All distances must be from the outer boundaries of the Section.

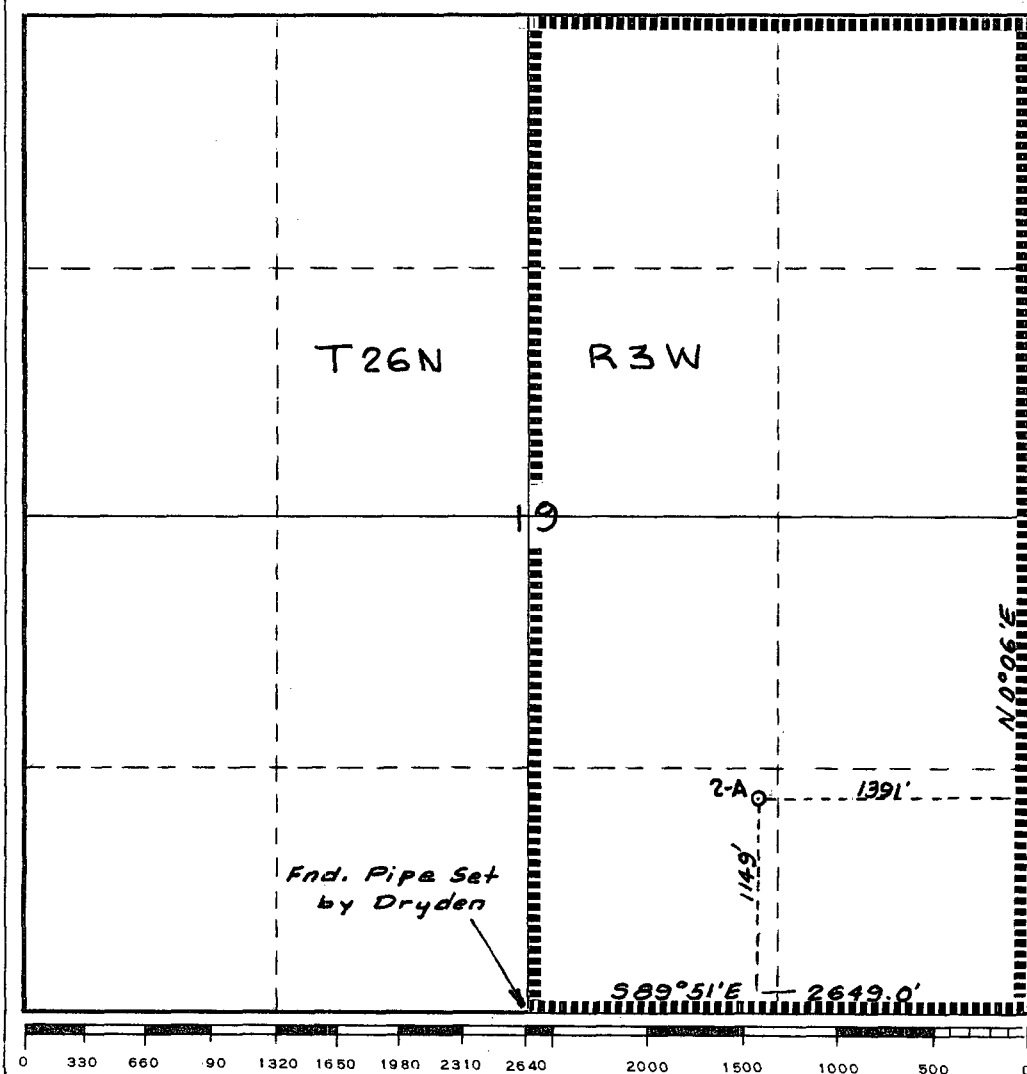
Operator Mobil Oil Corporation			Lease Jicarilla B		Well No. 2-A
Unit Letter 0	Section 19	Township 26N	Range 3W	County Rio Arriba	
Actual Footage Location of Well: 1149 feet from the South line and 1391 feet from the East line					
Ground Level Elev. 7034	Producing Formation Mesaverde		Pool Blanco Mesaverde		Dedicated Acreage: 320 (2 wells) Acres

1. Outline the acreage dedicated to the subject well by colored pencil or hachure marks on the plat below.
2. If more than one lease is dedicated to the well, outline each and identify the ownership thereof (both as to working interest and royalty).
3. If more than one lease of different ownership is dedicated to the well, have the interests of all owners been consolidated by communitization, unitization, force-pooling, etc?

☐ Yes ☐ No If answer is "yes," type of consolidation _____

If answer is "no," list the owners and tract descriptions which have actually been consolidated. (Use reverse side of this form if necessary.) _____

No allowable will be assigned to the well until all interests have been consolidated (by communitization, unitization, forced-pooling, or otherwise) or until a non-standard unit, eliminating such interests, has been approved by the Commission.



CERTIFICATION

I hereby certify that the information contained herein is true and complete to the best of my knowledge and belief.

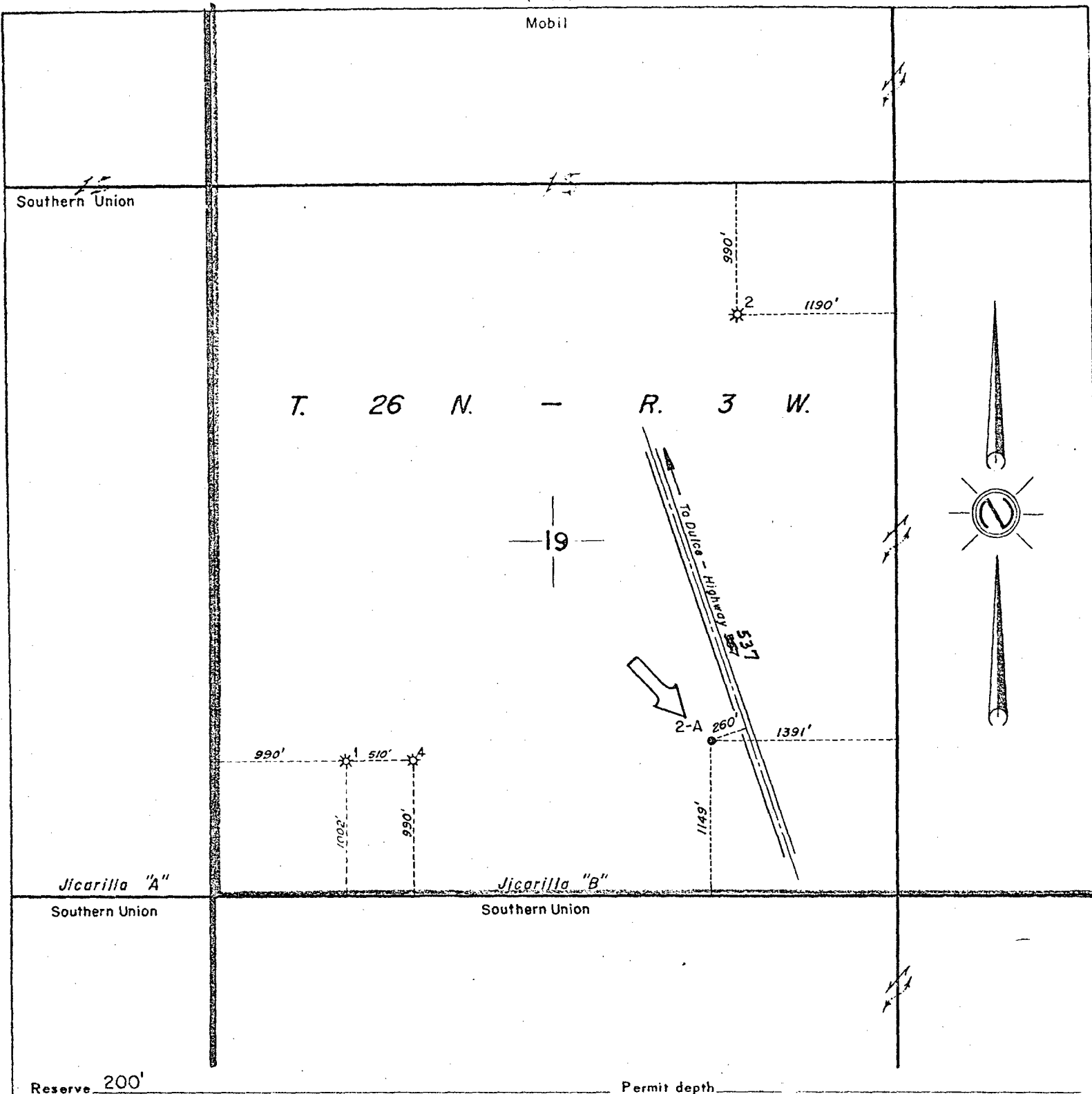
Name A. D. Bond
Position Regulatory Engineering Coordinator
Company Mobil Oil Corporation
Date September 16, 1976

I hereby certify that the well location shown on this plat was plotted from field notes of actual surveys made by me or under my supervision and that the same is true and correct to the best of my knowledge and belief.

Date Surveyed July 8, 1976
Registered Professional Engineer and/or Land Surveyor

H. A. Carson, Jr.
Certificate No.

5063



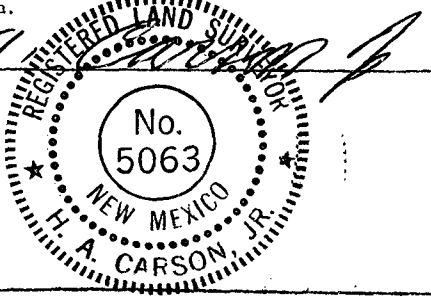
Special instructions

Date work is commenced _____, 19____ Supt.

Location approved by _____ Location made by _____ A.D. Bond

THE STATE OF TEXAS
COUNTY OF HARRIS MIDLAND

I hereby certify that this plat truly represents conditions as they actually exist on this lease; that said plat which is drawn to the scale indicated hereon, is to the best of my knowledge true and correct; that it accurately shows said lease with all wells on same; that number and locations of said wells are as indicated hereon; and that this plat correctly reflects all pertinent and required data.

**Mobil Oil Corporation**
Houston E & P Division

LEASE Jicarilla "B"

DIVISION Houston LEASE NO. NM-2595

LOCATION MADE September 16, 1976 WELL NO. 2-A

TOTAL ACRES IN LEASE 2508.20 ACRES COVERED BY PLAT

DESCRIPTION Secs. 17, 18, 19 & 20; T. 26 N. - R. 3 W.

Rio Arriba COUNTY New Mexico

DRAWN Wm. H. Winckler

DATE 7-16-57

FIELD Blanco Mesaverte

SCALE 1" = 1000'

FILE NO. 105

OIL CONSERVATION COMMISSION
Alameda DISTRICT

OIL CONSERVATION COMMISSION
BOX 2088
SANTA FE, NEW MEXICO

DATE

10-1-76

RE: Proposed MC _____
Proposed DHC _____
Proposed NSL / _____
Proposed SWD _____
Proposed WFX _____
Proposed PMX _____

Jim Kapteina

Gentlemen:

I have examined the application dated 9-16-76
for the Mobil Oil Corp. Jicarilla B[#] 2A 0-19-26N-3W
Operator Lease and Well No. Unit, S-T-R

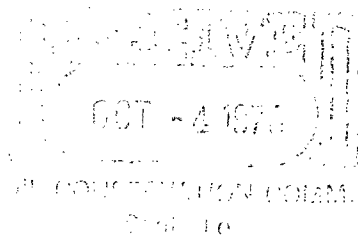
and my recommendations are as follows:

Approve

Yours very truly,

AR Kendrick

Mobil Oil Corporation



THREE GREENWAY PLAZA EAST - SUITE 800
HOUSTON, TEXAS 77046

September 28, 1976

New Mexico Oil Conservation Commission
State Land Office Building
P. O. Box 2088
Santa Fe, New Mexico 87501

Attention: Mr. Joe Ramey

7.01 Unorthodox Well Location
Mobil Oil Corporation's
Jicarilla B, Well #2-A
Blanco Mesaverde Pool
Rio Arriba County, New Mexico

Gentlemen:

Attached are three copies of a waiver from Southern Union Production Company waiving objection to the subject well. There are no other offset operators to this well; therefore, it is respectfully requested that the permit for this well be issued immediately.

Yours very truly,

J. A. Morris
Regulatory Engineering Supervisor

A. D. Bond/bn

cc: NMOCC - Aztec w/attach.

Mobil Oil Corporation

THREE GREENWAY PLAZA EAST - SUITE 800
HOUSTON, TEXAS 77046

September 16, 1976

New Mexico Oil Conservation Commission
State Land Office Building
P. O. Box 2088
Santa Fe, New Mexico 87501

Attn: Mr. Joe Ramey

Unorthodox Well Location
Mobil Oil Corporation's
Jicarilla B, Well #2-A
Blanco Mesaverde Pool
Rio Arriba County, New Mexico

Gentlemen:

Southern Union Production Company has been furnished a copy of Mobil Oil Corporation's application for permission to drill the subject well at an unorthodox location. Please be informed that we have no objection to the Commission approving the drilling of this well at the location described in Mobil's letter dated September 16, 1976.

Yours very truly,

Company: Southern Union Prod. Co.

Representative: Haskell Fleetwood

Title: Manager, Drilling and Production

Signature: Haskell Fleetwood

Date: September 20, 1976