

NORTHWEST PRODUCTION CORPORATION

Post Office Box 990
Farmington, New Mexico 87401

RECEIVED
JAN - 7 1977

OIL CONSERVATION COMMISSION
Santa Fe

January 4, 1977

NSL - 821

104 F

Due Jan 27

Mr. Joe Ramey
New Mexico Oil Conservation Commission
Post Office Box 2088
Santa Fe, New Mexico 87501

Dear Mr. Ramey:

This is a request for administrative approval for an unorthodox gas well location in the Blanco Mesa Verde Pool. Terrain features make an orthodox location expensive to build and maintain.

It is intended to locate the Northwest Production Corporation Jicarilla 119 N #8A, 535' from the West line and 800' from the North line of Section 8, T-26-N, R-4-W, NMPM, Rio Arriba County, New Mexico. The West half of Section 8 is dedicated to this well.

The terrain in the Northwest quarter of Section 8 has two ridges and a deep wash that will not permit a location to be built at a reasonable cost. Actually, the back side of the unorthodox location will be closer to the edge than the plat indicates. For these reasons, it is requested that the unorthodox location be approved.

All of the operators in the offsetting proration units have been notified of this application.

Plats showing the proposed well location with terrain features and operators of offset leases are attached.

Yours truly,

Don Read

Donald R. Read
Division Drilling Engineer

DRR:pb

cc: Jerry Long, U.S. Geological Survey, Durango, Colorado
A. R. Kendrick, N.M. Oil Conservation Commission, Aztec, New Mexico

NORTHWEST PRODUCTION CORPORATION
Post Office Box 990
Farmington, New Mexico 87401

January 4, 1977

Amoco Production Company
Security Life Building
Denver, Colorado 80202

Registered Mail

Re: Unorthodox Gas Well Location

Gentlemen:

Northwest Production Corporation has requested administrative approval for an unorthodox gas well location in the Blanco Mesa Verde Pool.

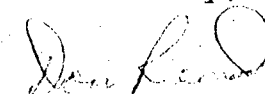
It is intended to locate the Northwest Production Corporation Jicarilla 119 N #8A, 535' from the West line and 800' from the North line of Section 8, T-26-N, R-4-W, NMPM, Rio Arriba County, New Mexico. The West half of Section 8 is dedicated to this well.

The terrain in the Northwest quarter of Section 8 has two ridges and a deep wash that will not permit a location to be built at a reasonable cost. Actually, the back side of the unorthodox location will be closer to the edge than the plat indicates. For these reasons, it is requested that the unorthodox location be approved.

In compliance with New Mexico Oil Conservation Commission rules, we are notifying you, as operator of an offsetting proration unit, of our application for administrative approval for the aforementioned unorthodox gas well location.

A plat showing the proposed well location and offsetting Mesa Verde lease ownership is attached.

Yours truly,

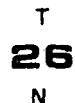


Donald R. Read
Division Drilling Engineer

DRR:pb

cc: Mr. Joe Ramey, New Mexico Oil Conservation Commission, Santa Fe, NM

R 4 W



ENG. REC.		DATE
DRAWN	D. T.	12-20-76
CHECKED		
CHECKED		
PROJ. APP.		
DESIGN		
W.D.		

REV

**NEW MEXICO OIL CONSERVATION COMMISSION
WELL LOCATION AND ACREAGE DEDICATION PLAT**

Form C-102
Supersedes C-12d
Effective 1-1-65

All distances must be from the outer boundaries of the Section.

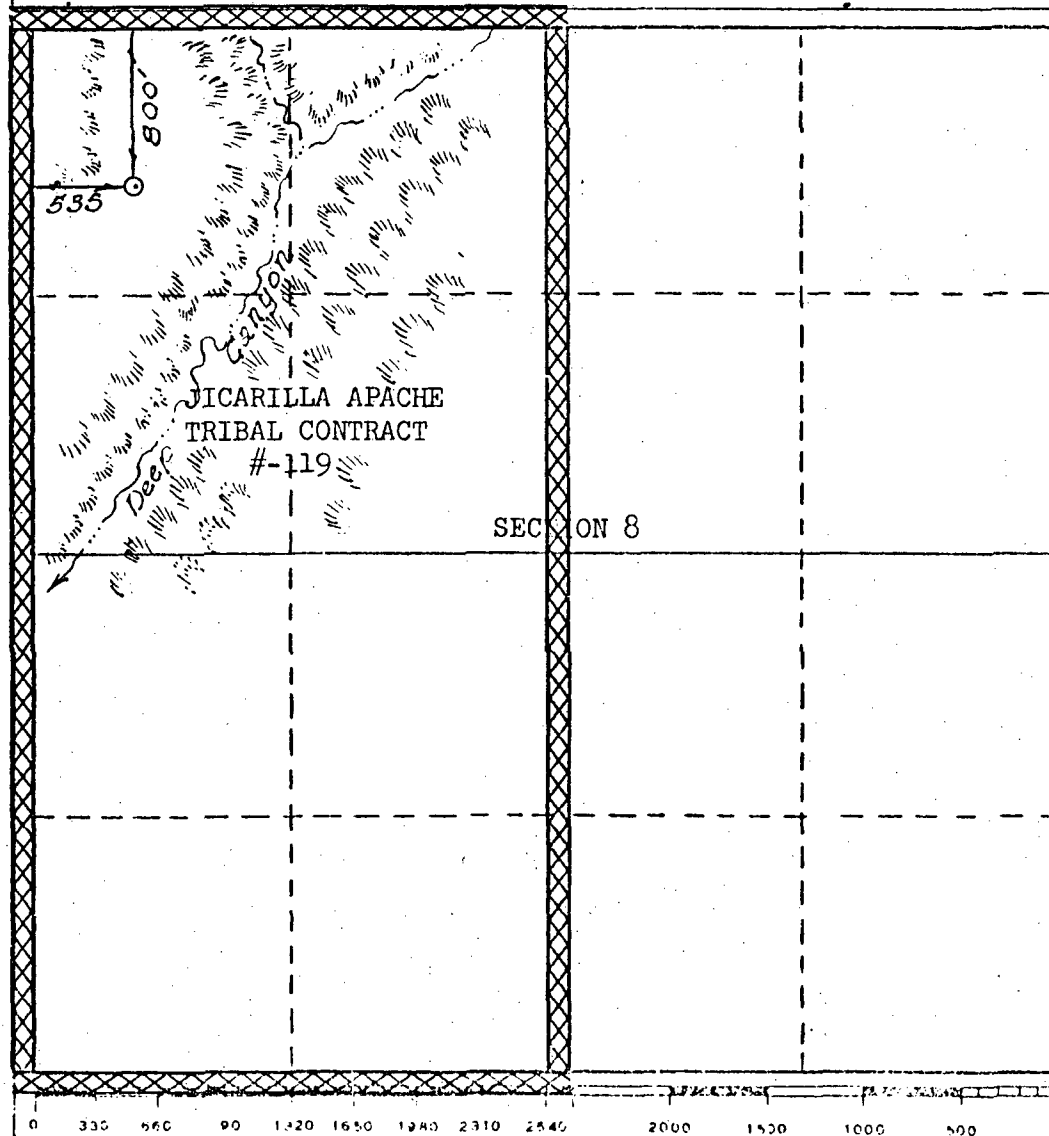
Operator NORTHWEST PRODUCTION CORPORATION			Lease JICARILLA 119 N		JICARILLA APACHE TRIBAL CONT. 119		Well No. 8A
Unit Layer D	Section 8	Township 26-N	Range 4-W	County RIO ARriba			
Actual Footage Location of Well: <div style="display: flex; justify-content: space-between;"> 800 feet from the NORTH line and 535 feet from the WEST line </div>							
Ground Level Elev. 7167	Producing Formation MESA VERDE		Pool BLANCO MESA VERDE		Dedicated Acreage: 320.00 Acres		

1. Outline the acreage dedicated to the subject well by colored pencil or hachure marks on the plat below.
2. If more than one lease is dedicated to the well, outline each and identify the ownership thereof (both as to working interest and royalty).
3. If more than one lease of different ownership is dedicated to the well, have the interests of all owners been consolidated by communitization, unitization, force-pooling, etc?

☐ Yes ☐ No If answer is "yes," type of consolidation _____

If answer is "no," list the owners and tract descriptions which have actually been consolidated. (Use reverse side of this form if necessary.) _____

No allowable will be assigned to the well until all interests have been consolidated (by communitization, unitization, forced-pooling, or otherwise) or until a non-standard unit, eliminating such interests, has been approved by the Commission.



CERTIFICATION

I hereby certify that the information contained herein is true and complete to the best of my knowledge and belief.

Original Signed by
D. S. Greco

Name

Drilling Clerk

Position

Northwest Production Co

Company

January 4, 1977

Date

I hereby certify that the well location shown on this plat was plotted from field notes of actual surveys made by me or under my supervision, and that the same is true and correct to the best of my knowledge and belief.

Date Surveyed

OCTOBER 20, 1976

Registered Professional Engineer
and/or Land Surveyor

Certificate No. **1760**

UNITED STATES
DEPARTMENT OF THE INTERIOR
GEOLOGICAL SURVEY

APPLICATION FOR PERMIT TO DRILL, DEEPEN, OR PLUG BACK

1a. TYPE OF WORK DRILL <input checked="" type="checkbox"/> DEEPEN <input type="checkbox"/> PLUG BACK <input type="checkbox"/>			5. LEASE DESIGNATION AND SERIAL NO. Jic. Apache Tribal Contract #119		
b. TYPE OF WELL OIL WELL <input type="checkbox"/> GAS WELL <input checked="" type="checkbox"/> OTHER <input type="checkbox"/> SINGLE ZONE <input checked="" type="checkbox"/> MULTIPLE ZONE <input type="checkbox"/>			6. IF INDIAN, ALLOTTEE OR TRIBE NAME Jicarilla Apache		
2. NAME OF OPERATOR Northwest Production Corporation			7. UNIT AGREEMENT NAME		
3. ADDRESS OF OPERATOR Post Office Box 990, Farmington, NM 87401			8. FARM OR LEASE NAME Jicarilla 119 N		
4. LOCATION OF WELL (Report location clearly and in accordance with any State requirements.)* At surface 800'N, 535'W At proposed prod. zone			9. WELL NO. 8A		
14. DISTANCE IN MILES AND DIRECTION FROM NEAREST TOWN OR POST OFFICE*			10. FIELD AND POOL, OR WILDCAT Blanco Mesa Verde		
15. DISTANCE FROM PROPOSED* LOCATION TO NEAREST PROPERTY OR LEASE LINE, FT. (Also to nearest drlg. unit line, if any)			11. SEC., T., R., M., OR BLK. AND SURVEY OR AREA Sec. 8, T-26-N, R-4-W NMPM		
16. NO. OF ACRES IN LEASE			12. COUNTY OR PARISH		
17. NO. OF ACRES ASSIGNED TO THIS WELL 320.00			13. STATE NM		
18. DISTANCE FROM PROPOSED LOCATION* TO NEAREST WELL, DRILLING, COMPLETED, OR APPLIED FOR, ON THIS LEASE, FT.			19. PROPOSED DEPTH 6400'		
20. ROTARY OR CABLE TOOLS Rotary			21. APPROX. DATE WORK WILL START*		
21. ELEVATIONS (Show whether DF, RT, GR, etc.) 7167'GL					

23. PROPOSED CASING AND CEMENTING PROGRAM

SIZE OF HOLE	SIZE OF CASING	WEIGHT PER FOOT	SETTING DEPTH	QUANTITY OF CEMENT
13 3/4"	9 5/8"	32.3#	200'	224 cu.ft. to circulate
8 3/4"	7"	20.0#	4160'	174 cu.ft. to cover Ojo Ala
6 1/4"	4 1/2"	10.5#	3960-6400'	418 cu.ft. to fill to 3960'

Selectively perforate and sandwater fracture the Mesa Verde formation.

A 3000 psi WP and 6000 psi test double gate preventer equipped with blind and pipe rams will be used for blow out prevention on this well.

This gas is dedicated.

The W/2 of Section 8 is dedicated to this well.

IN ABOVE SPACE DESCRIBE PROPOSED PROGRAM: If proposal is to deepen or plug back, give data on present productive zone and proposed new productive zone. If proposal is to drill or deepen directionally, give pertinent data on subsurface locations and measured and true vertical depths. Give blowout preventer program, if any.

24.

SIGNED A. P. Davis TITLE Drilling Clerk DATE January 4, 1977

(This space for Federal or State office use)

PERMIT NO. _____ APPROVAL DATE _____

APPROVED BY _____ TITLE _____ DATE _____
CONDITIONS OF APPROVAL, IF ANY:

*See Instructions On Reverse Side

NORTHWEST PRODUCTION CORPORATION
Multi-Point Surface Use Plan
Jicarilla 119 N #8A

1. Existing Road - Please refer to Map No. 1 which shows the existing roads. New roads which will be required have been marked on this map. All existing and new roads will be properly maintained during the duration of this project.
2. Planned Access Roads - Please refer to Map No. 1. The grade of the access roads will be consistent with that of the local terrain. The road surface will not exceed thirty feet (30') in width. Upon completion of the project, the access road will be adequately drained to control soil erosion. Drainage facilities may include ditches, water bars, culverts or any other measure deemed necessary by trained Company personnel to insure proper drainage. Gates and/or cattleguards will be installed if necessary.
3. Location of Existing Wells - Please refer to Map No. 1
4. Location of Tank Batteries, Production Facilities, and Production Gathering and Service Lines - Please refer to Maps No. 1 and No. 2. Map No. 2 shows the existing and proposed gas gathering lines. Map No. 1 shows the existing roads and new proposed access roads. All known production facilities are shown on these two maps.
5. Location and Type of Water Supply - Water for the proposed project will be obtained from a water hole located in SE/4 of Section 17, T-26-N, R-4-W (Jicarilla Bull Pasture Water Hole)
6. Source of Construction Materials - No additional materials will be required to build either the access road or the proposed location.

7. Methods of Handling Waste Materials - All garbage and trash materials will be put into a burn pit shown on the attached Location Plat No. 1. When clean-up operations are begun on the proposed project, the burn pit with its refuse will be buried to a depth of at least three feet (3'). A latrine, the location of which is also shown on Plat No. 1 will be provided for human waste. If large amounts of liquids are left in the reserve pit after completion of the project, the pit will be fenced until the liquids have had adequate time to dry. The location clean-up will not take place until such time as the reserve pit can be properly covered over to prevent run-off from carrying any of these materials into the watershed. No earthen pit will be located on natural drainages; all earthen pits will be so constructed as to prevent leakage from occurring.
8. Ancillary Facilities - No camps or airstrips will be associated with this project.
9. Wellsite Layout - Please refer to the attached Plat No. 1.
10. Plans for Restoration of the Surface - After completion of the proposed project, the location will be cleaned and leveled. The location will be left in such a condition that will enable reseeding operations to be carried out as prescribed by either the governmental regulatory agency or land owner and El Paso Natural Gas Company. The reseeding operation will be performed during the time period set forth by the regulatory body. The location production equipment will be painted the color or colors designated by the proper governmental agency.
11. Other Information - The immediate area surrounding the proposed wellsite is rough and rocky. There is some pinon, cedar and yucca growing on the location. Some deer and coyotes have been seen on the location.

12. Operator's Representative - W. D. Dawson, Post Office Box 990,
Farmington, New Mexico 87401

13. Certification - I hereby certify that I, or persons under my direct supervision, have inspected the proposed drillsite and access route; that I am familiar with the conditions which presently exist; that the statements made in this plan are, to the best of my knowledge, true and correct; and, that the work associated with the operations proposed herein will be performed by El Paso Natural Gas Company and its contractors and sub-contractors in conformity with this plan and the terms and conditions under which it is approved.

January 4, 1977

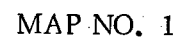


D. R. Read
Division Drilling Engineer

pb

NW 1/4 Sec. 8, T-26-N, R-4-W

R4W



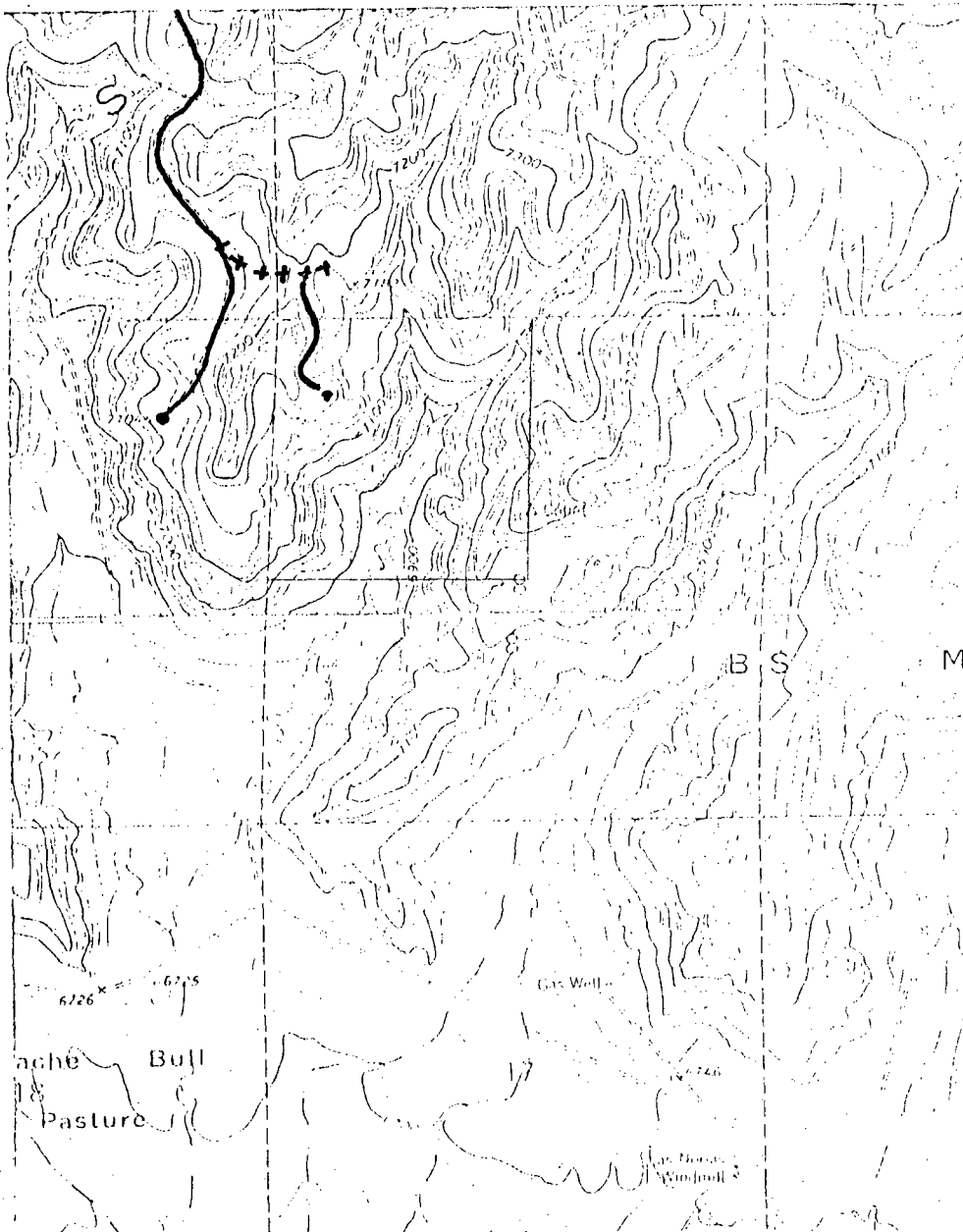
TO BE TIED BY NORTHWEST PIPELINE CORPORATION

NORTHWEST PRODUCTION CORPORATION

Quantity 1/4 20 1/2
NO 8-26-1

L. 4. N

1
26
N



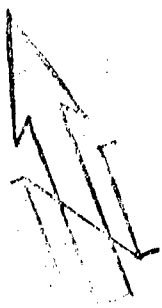
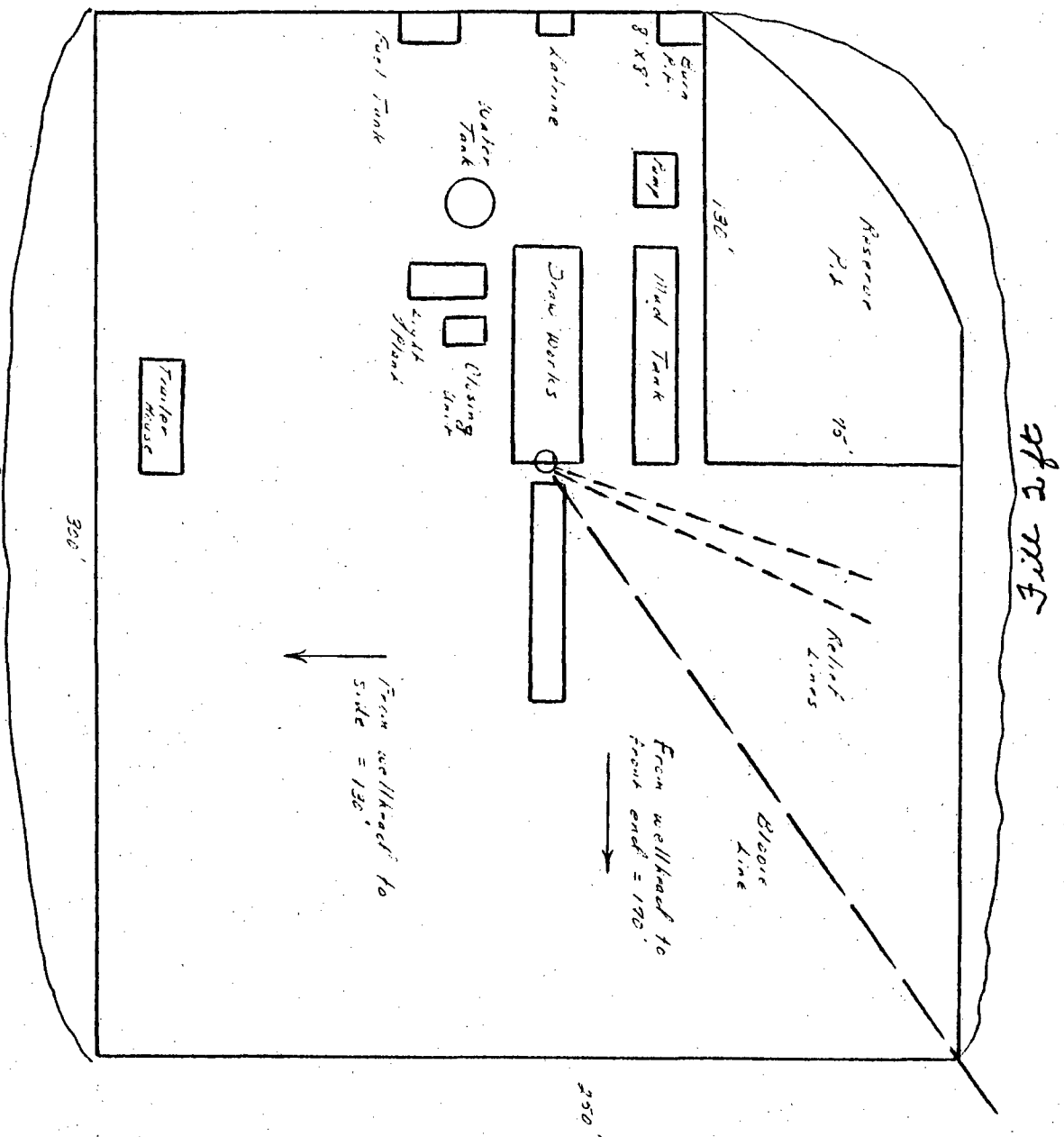
MAP No. 2

LEGEND OF RIGHT-OF-WAYS

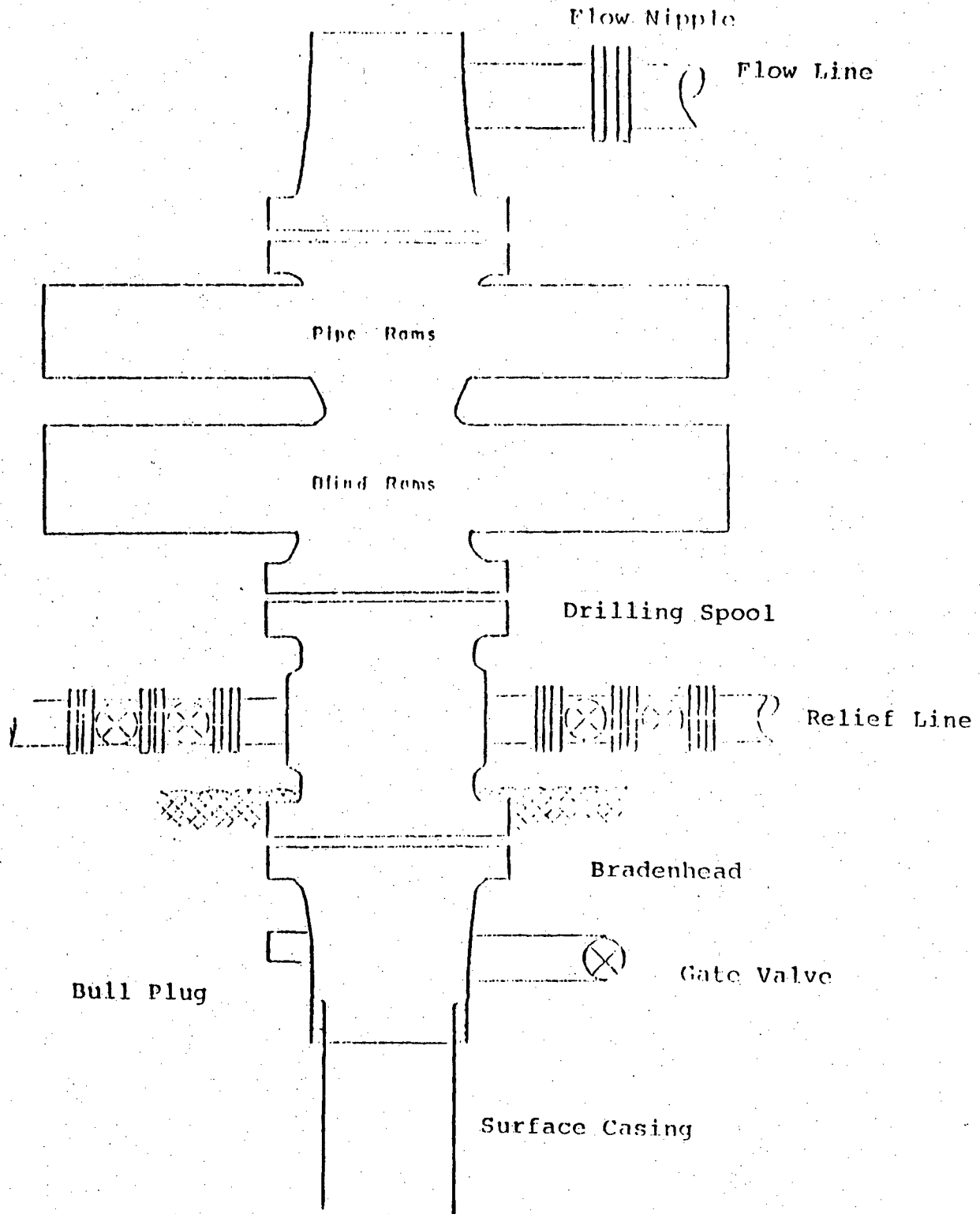
EXISTING ROADS	—
EXISTING FENCE	— + + + —
EXISTING ROAD FENCE	— + + + —
PROPOSED ROAD	—
PROPOSED FENCE	— + + + —

E1 Paso Natural Gas Company
 Typical location plat for Missoula and Dakota wells

Cut 3 ft



Typical B.O.P. Installation
for Mesa Verde Well



10" 900 x 9 5/8" casing head
10" 900 x 6" 900 xmas tree

January 4, 1977

Operations Plan
Jicarilla 119 N #8A
Northwest Production Corporation

I. Location: NW/4 Section 8, T-26-N, R-4-W, Rio Arriba County, NM

Field: Blanco Mesa Verde

Elevation: 7167'GR

II. Geology:

A. Formation Tops:	Ojo Alamo	3400'	Lewis	3960'
	Kirtland	3520'	Mesa Verde	5505'
	Fruitland	3610'	Menefee	5630'
	Pic.Cliffs	3860'	Point Lookout	6000'
			Total Depth	6400'

B. Logging Program: GR-Ind. and GR-Density at Total Depth.

C. Coring Program: none

D. Natural Gauges: 5620', 5990' and at Total Depth.

Also gauge any noticeable increase in gas. Record all gauges in daily drilling report and on morning report.

III. Drilling:

A. Mud Program: mud from surface to 4160'. Gas from intermediate casing to Total Depth.

IV. Materials:

A. Casing Program:	Hole Size	Depth	Casing Size	Wt.&Grade
	13 3/4"	200'	9 5/8"	32.3# H-40
	8 3/4"	4160'	7"	20.0# K-55
	6 1/4"	3960-6400'	4 1/2"	10.5# K-55

B. Float Equipment: 9 5/8" surface casing - Larkin guide shoe (fig. 102)

7" intermediate casing - Dowell guide shoe (fig. 50101) and Dowell self-fill insert float valve (fig. 53003), 5 B&W stabilizers (Prod. No. 637085) every other joint above shoe. Run float two joints above shoe.

4 1/2" liner - T.I.W. liner hanger with neoprene packoff. Larkin geyser shoe (fig. 222) and Larkin flapper type float collar (fig. 404 M&F).

C. Tubing: 6400' of 2 3/8", 4.7#, J-55 8rd EUE tubing with a common pump seating nipple above perforated pup joint with bull plugged full joint for mud anchor on bottom.

D. Wellhead Equipment: 10" 900 x 9 5/8" OCT casing head. 10" 900 x 6" 900 OCT xmas tree.

Operations Plan - Jicarilla 119 N #8A, cont'd.

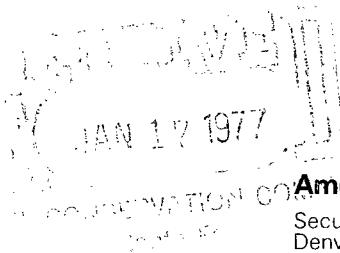
V. Cementing:

9 5/8" surface casing - use 190 sks. of Class "B" cement with 1/4# gel-flake per sack and 3% calcium chloride (224 cu.ft. of slurry, 100% excess to circulate to surface). WOC 12 hours. Test casing to 600#/30 minutes.

7" intermediate casing - use 35 sks. of 65/35 Class "B" Poz with 12% gel (15.52 gallons of water per sack) followed by 70 sks. of Class "B" with 2% calcium chloride (174 cu.ft. of slurry, 50% excess to cover Ojo Alamo). Run temperature survey at 8 hours. WOC 12 hours. Test casing to 1200#/30 minutes.

4 1/2" liner - precede cement with 20 barrels of gel water (2 sks. gel) Cement with 237 sks. of Class "B" cement with 4% gel, 1/4 cu.ft. of fine gilsonite per sack and 0.6% Halad-9 (418 cu.ft. of slurry, 70% excess to circulate liner).

DRR:pb



Amoco Production Company

Security Life Building
Denver, Colorado 80202

NSL - 821

January 13, 1977

Mr. Joe D. Ramey
New Mexico Energy Resources Board
c/o New Mexico Oil Conservation Commission
P. O. Box 2088
Santa Fe, NM 87501

File: VDP-66-986.511

Dear Mr. Ramey:

Unorthodox Gas Well Location
Blanco Mesaverde Pool
Rio Arriba County, NM

As operator of an offsetting proration unit, Amoco has no objection with Northwest Production Corporation's requested unorthodox gas well location, its Jicarilla 119N8A, to be located 535 FWL and 800' FNL of Section 8-T26N-R4W.

Very truly yours,

RBG:fet

cc: Mr. Donald R. Read
Division Drilling Engineer
Northwest Production Corp.
P. O. Box 990
Farmington, NM 87401

OIL CONSERVATION COMMISSION
Alto DISTRICT

OIL CONSERVATION COMMISSION
BOX 2088
SANTA FE, NEW MEXICO

DATE Jan 18, 1977

RE: Proposed MC _____
Proposed DHC _____
Proposed NSL ✓ _____
Proposed SWD _____
Proposed WFX _____
Proposed PMX _____

Jim Kapteina

JAN 20 1977

Gentlemen:

I have examined the application dated January 4, 1977
for the Northwest Production Corp. Jicarilla 119N #8A D-8-26N-4W
Operator Lease and Well No. Unit, S-T-R

and my recommendations are as follows:

Approve

Yours very truly,

AR Kendrick