



RESERVE OIL, INC.

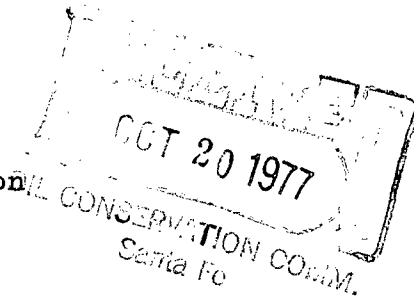
THE SOUTHERN DIVISION

312 HBF BUILDING
MIDLAND, TEXAS 79701
(915) 682-4341

October 17, 1977

*Amended
HSL - 887*

New Mexico Oil Conservation Commission
P. O. Box 2088
Santa Fe, New Mexico 87501



*OK
BLS*

Attention: Mr. Joe D. Ramey

Re: Authorization of Unorthodox Location
Cooper Jal Unit, Well No. 151
Langlie Mattix Field
Lea County, New Mexico

Gentlemen:

Reference your approval letter of September 8, 1977 (copy attached), Reserve Oil, Inc. requests that the red underlined well distances from the Section line be amended from 700 feet FNL & 100 feet FEL to 771' FNL & 170' FEL. This will not materially affect our original request (Attachment "B") and justification for an unorthodox location but will correct a discrepancy between the Form "C-101" and "C-102" in our original request.

When initially filling out the Form "C-101", the distances from the well to the section line were measured on a map. Later, the accurate distances were provided by a surveyor, Mr. John W. West, and were so recorded on the Form "C-102". When assembling the attachments for our original request, I failed to go back and re-enter the accurate distances on the Form "C-101" that was submitted with the original unorthodox location request.

I regret the inconvenience this may cause and should there be any questions, please call me collect at 915-682-4341.

Very truly yours,

RESERVE OIL, INC.

Clarence R. Chandler

ck

Attachment

cc: Mr. J. T. Sexton - NMOCC, Hobbs

NSL-887

OIL CONSERVATION COMMISSION
Hobbs DISTRICT

OIL CONSERVATION COMMISSION
BOX 2088
SANTA FE, NEW MEXICO

DATE August 22, 1977

RE: Proposed MC _____
Proposed DHC _____
Proposed NSL X _____
Proposed SWD _____
Proposed WFX _____
Proposed PMX _____

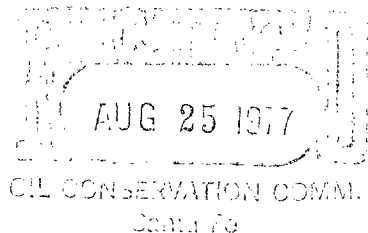
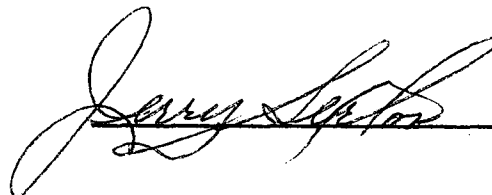
Gentlemen:

I have examined the application dated _____
for the Reserve Oil, Inc. Cooper Jal Unit #151-A 24-24-36
Operator Lease and Well No. Unit, S-T-R

and my recommendations are as follows:

O.K.---J.S.

Yours very truly,





OIL CONSERVATION COMMISSION

STATE OF NEW MEXICO
P. O. BOX 2088 - SANTA FE
87501

LAND COMMISSIONER
PHIL R. LUCERO

DIRECTOR
JOE D. RAMEY



STATE GEOLOGIST
EMERY C. ARNOLD

September 8, 1977

OCT 20 1977
OIL CONSERVATION COM. V.
Santa Fe

RECEIVED

SEP 12 1977

MIDLAND DISTRICT

Reserve Oil, Inc.
312 HBF Building
Midland, Texas 79701

Attention: Clarence R. Chandler

Administrative Order NSL-887

Gentlemen:

Reference is made to your application for approval of a non-standard location for your Cooper Jal Unit Well No. 151 to be located 700 feet from the North line and 100 feet from the East line of Section 24, Township 24 South, Range 36 East, NMPM, Langlie-Mattix Field, Lea County, New Mexico.

Inasmuch as this unorthodox location is well within the Cooper Jal Unit Area and cannot impair any other operator's rights, the above-described location is hereby approved.

Very truly yours,

JOE D. RAMEY,
Secretary-Director

JDR/RLS/dr

cc: Oil Conservation Commission - Hobbs
Oil & Gas Engineering Committee - Hobbs

File

August 15, 1977

New Mexico Oil Conservation Commission
P. O. Box 2088
Santa Fe, New Mexico 87501

Attention: Mr. Joe Ramey

Re: Application to Drill Unorthodox Location
Cooper Jal Unit, Well No. 151
Langlie Mattix Field
Lea County, New Mexico

Gentlemen:

Reserve Oil, Inc. requests administrative approval of its application to drill Cooper Jal Unit, Well No. 151, in an unorthodox location in the Cooper Jal Unit, Langlie-Mattix Field, Lea County, New Mexico. Reference Attachment "C", the proposed producer (Well No. 151) is located in a 160-acre tract that already has four (4) Langlie Mattix wells (2 producers - 2 injectors). Well No. 151's location is considered to be in an optimum position to recover otherwise unrecoverable reserves in an injection pattern bounded by Well Nos. 122, 116, 134, 147 and 127. According to Rule 104, Paragraph C, Section I, "only tracts committed to active secondary recovery projects shall be permitted more than four wells."

Attached for your review are Forms C-101 and C-102, Attachment "B", a plat showing the entire Unit, and Attachment "A", a history of the Unit's performance to date.

Should there be any questions, please call us collect at 915-682-4341.

Very truly yours,

RESERVE OIL, INC.

Clarence R. Chandler

ck
Enclosures
cc: NMOCC-Hobbs

ATTACH. "B"

NO. OF COPIES RECEIVED	
DISTRIBUTION	
SANTA FE	
FILE	
U.S.G.S.	
LAND OFFICE	
OPERATOR	

NEW MEXICO OIL CONSERVATION COMMISSION

Form C-101
Revised 1-1-65

5A. Indicate Type of Lease	
STATE <input type="checkbox"/>	FEE <input checked="" type="checkbox"/>
5. State Oil & Gas Lease No.	

APPLICATION FOR PERMIT TO DRILL, DEEPEN, OR PLUG BACK

1a. Type of Work DRILL <input checked="" type="checkbox"/> DEEPEN <input type="checkbox"/> PLUG BACK <input type="checkbox"/>		7. Unit Agreement Name Cooper Jal Unit	
b. Type of Well OIL WELL <input checked="" type="checkbox"/> GAS WELL <input type="checkbox"/> OTHER <input type="checkbox"/>		8. Farm or Lease Name Cooper Jal Unit	
2. Name of Operator Reserve Oil, Inc.		9. Well No. 151	
3. Address of Operator 312 HBF Building, Midland, Texas 79701		10. Field and Pool, or Wildcat Langlie Mattix	
4. Location of Well UNIT LETTER A LOCATED 100 FEET FROM THE East LINE 700 FEET FROM THE North LINE OF SEC. 24 TWP. 24-S RGE. 36-E NMPM		12. County Lea	
19. Proposed Depth 3650'		19A. Formation Queen	
20. Rotary or C.T. Rotary		21. Elevations (Show whether DF, RT, etc.) 3303.3' G.L.	
21A. Kind & Status Plug. Bond Blanket		21B. Drilling Contractor Unknown	
22. Approx. Date Work will start Sept. 10, 1977			

23.

PROPOSED CASING AND CEMENT PROGRAM

SIZE OF HOLE	SIZE OF CASING	WEIGHT PER FOOT	SETTING DEPTH	SACKS OF CEMENT	EST. TOP
12 1/4"	8 5/8"	24#	350'	300	Surface
7 7/8"	5 1/2"	15.5#	* 3650'	1600	Surface

* Will set stage collar at 1300' and cement back to surface through same.

Will use 10", 900 series, Double Hydraulic Rams (Pipe & Blind) w/closing unit.

IN ABOVE SPACE DESCRIBE PROPOSED PROGRAM: IF PROPOSAL IS TO DEEPEN OR PLUG BACK, GIVE DATA ON PRESENT PRODUCTIVE ZONE AND PROPOSED NEW PRODUCTIVE ZONE. GIVE BLOWOUT PREVENTER PROGRAM, IF ANY.

I hereby certify that the information above is true and complete to the best of my knowledge and belief.

Signed Darlene R. McClure Title District Engineer Date 8-15-77

(This space for State Use)

APPROVED BY _____ TITLE _____ DATE _____

CONDITIONS OF APPROVAL, IF ANY:

NEW MEXICO OIL CONSERVATION COMMISSION
WELL LOCATION AND ACREAGE DEDICATION PLAT

Form O-10
Supersedes O-128
1-1-1974

All distances must be from the outer boundaries of the Section

Operator Reserve Oil Inc.		Lease Cooper Jal Unit		Acres 151
Well Letter A	Section 24	Township 24 South	Range 36 East	County Lea
Actual Acreage Location of Well: 771 feet from the North line and 170 feet from the East line				
Ground Level Elev. 3303.5	Producing Formation Queen		Form Langlie-Mattix	Section and Acreage * 90

1. Outline the acreage dedicated to the subject well by colored pencil or hatchure marks on the plat below.
2. If more than one lease is dedicated to the well, outline each and identify the ownership thereof (both as to working interest and royalty).
3. If more than one lease of different ownership is dedicated to the well, have the interests of all owners been consolidated by communitization, unitization, force-pooling, etc?

☒ Yes ☐ No If answer is "yes," type of consolidation **Unitization**

If answer is "no," list the owners and tract descriptions which have actually been consolidated. (Use reverse side of this form if necessary.) _____

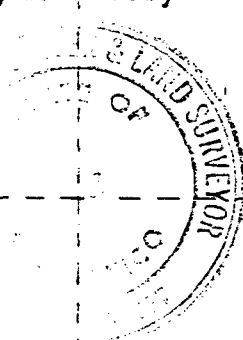
No allowable will be assigned to the well until all interests have been consolidated (by communitization, unitization, forced-pooling, or otherwise) or until a non-standard unit, eliminating such interests, has been approved by the Commission.

Note: Gr. Elev. is 3.5 feet lower than
Cooper No. 202 located in Sec.
19, Township 24 South, Range
~~37~~ East.

36

CRG

* Well is committed to Active Secondary Recovery Project. Applying for administrative approval for unorthodox location based upon Rule 104-"C", Sec. I.



CERTIFICATION

I hereby certify that the information contained herein is true and complete to the best of my knowledge and belief.

Clarence R. Chandler

Name

Clarence R. Chandler

Position

District Engineer

Company

Reserve Oil, Inc.

Date

8-15-77

I hereby certify that the well location shown on this plat was plotted from field notes of actual surveys made by me or under my supervision, and that the same is true and correct to the best of my knowledge and belief.

Date Surveyed

August 10, 1977

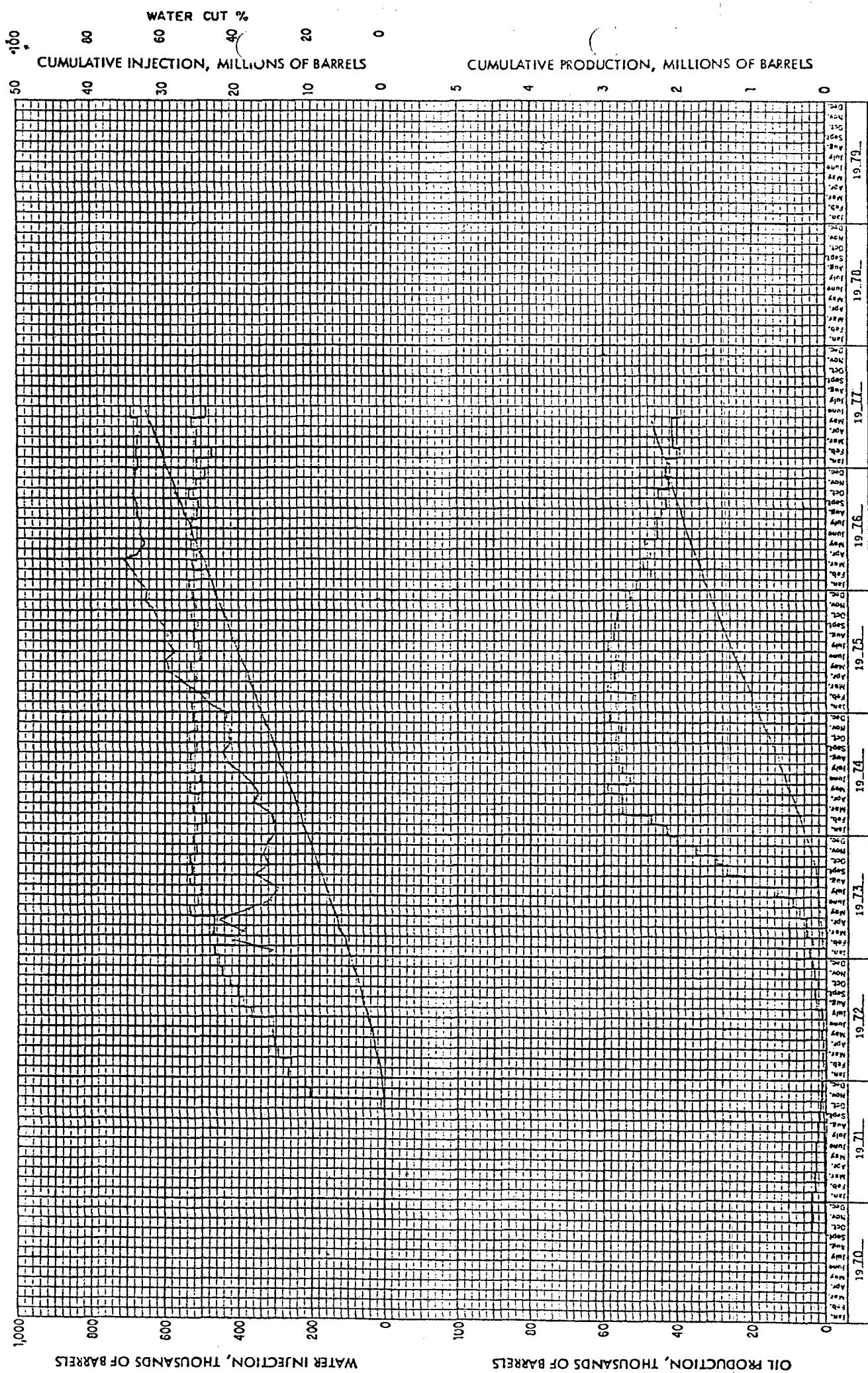
Registered Professional Engineer
and/or Land Surveyor

John W. West

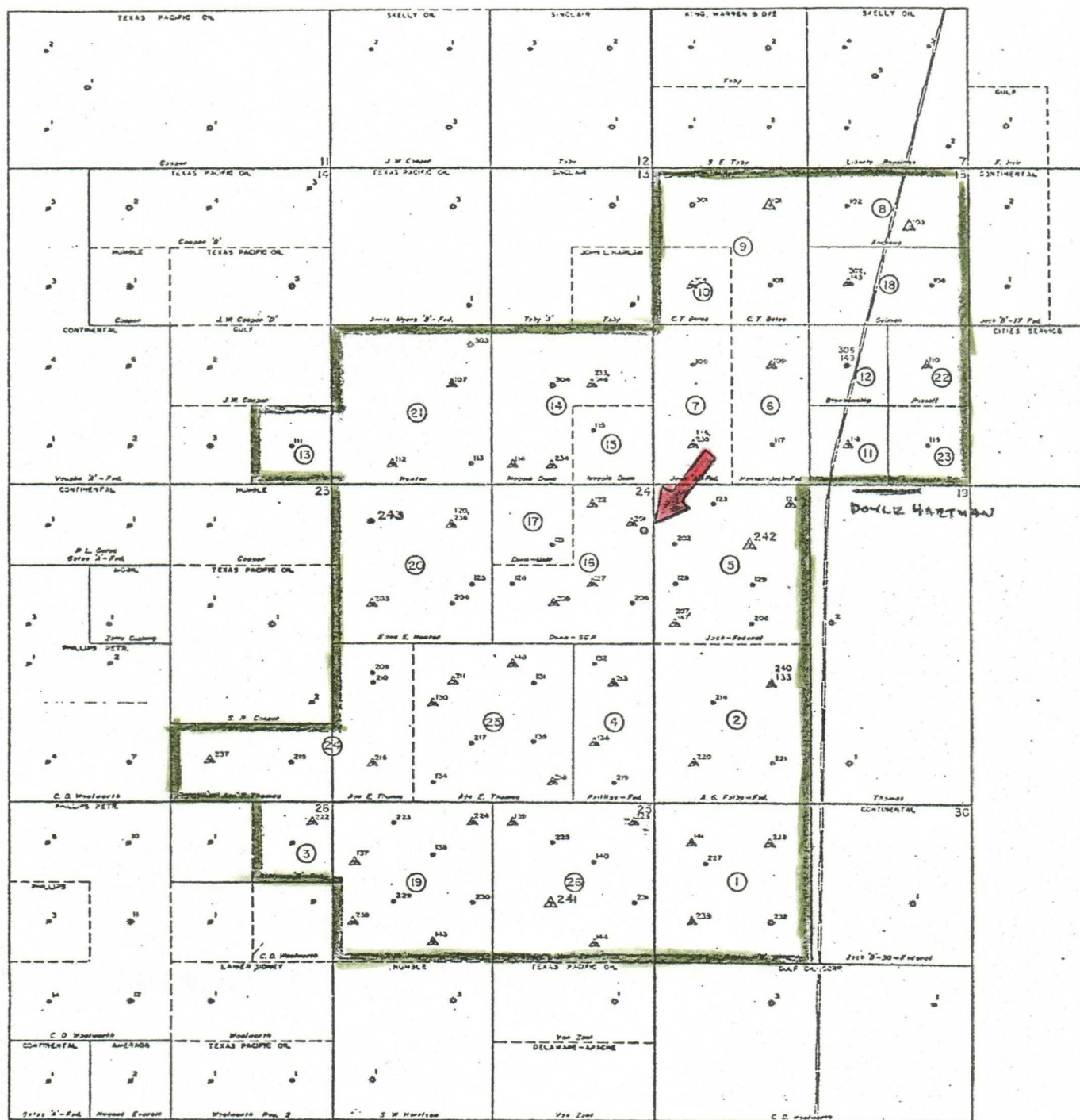
Certificate No.

676

330 660 990 1320 1650 1980 2310 2640 2970 3300 3630 3960 4290 4620 4950 5280 5610 5940 6270 6600 6930 7260 7590 7920 8250 8580 8910 9240 9570 9900



MONTHLY PERFORMANCE
COOPER - JAL UNIT
LEA COUNTY, NEW MEXICO



LEGEND

- UNIT BOUNDARY
- ① TRACT NUMBER
- ▲ INJECTION WELL
- 100 LANGLIE MATTIX ZONE
- 200 JALMAT OIL ZONE
- 300 JALMAT GAS ZONE



PROPOSED WELL #151

ATTACH. "B"

RESERVE OIL, INC.

COOPER JAL UNIT

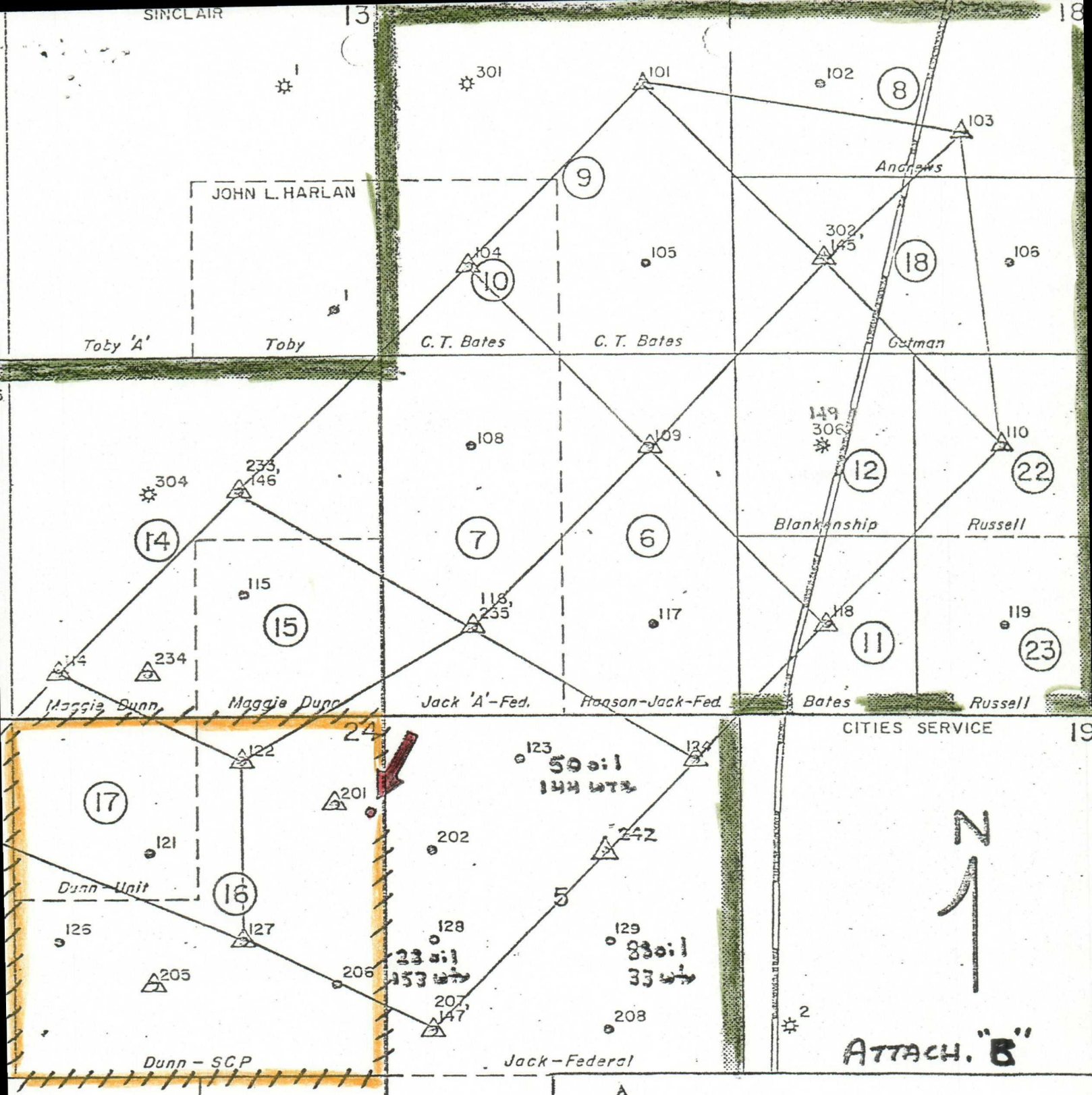
JALMAT AND LANGLIE MATTIX FIELDS

LES COUNTY, NEW MEXICO

SCALE 1" = 100'

DATE	BY	DATE	BY
1953	ST	1953	ST
1953	ST	1953	ST
1953	ST	1953	ST

RESERVE OIL & GAS COMPANY



LEGEND

- Unit Boundary
- Injection Well
- 100 Langlie Mattix Zone
- 200 Jalmat Oil Zone
- 300 Jalmat Gas Zone
- Proposed Well No. 151
- 160 acre tract boundary



RESERVE OIL, INC.

312 H B F BUILDING • MIDLAND, TEXAS 79701

Northeast Portion of
COOPER JAL UNIT
Jalmat & Langlie Mattix Fields
Lea County, New Mexico



RESERVE OIL, INC.

THE SOUTHERN DIVISION

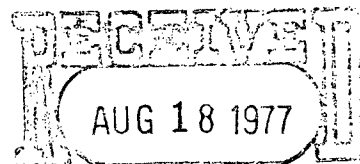
312 HBF BUILDING
MIDLAND, TEXAS 79701
(915) 682-4341

August 15, 1977

hsk-887

New Mexico Oil Conservation Commission
P. O. Box 2088
Santa Fe, New Mexico 87501

Attention: Mr. Joe Ramey



OIL CONSERVATION COMM
Santa Fe

Re: Application to Drill Unorthodox Location
Cooper Jal Unit, Well No. 151
Langlie Mattix Field
Lea County, New Mexico

Gentlemen:

Reserve Oil, Inc. requests administrative approval of its application to drill Cooper Jal Unit, Well No. 151, in an unorthodox location in the Cooper Jal Unit, Langlie-Mattix Field, Lea County, New Mexico. Reference Attachment "C", the proposed producer (Well No. 151) is located in a 160-acre tract that already has four (4) Langlie Mattix wells (2 producers - 2 injectors). Well No. 151's location is considered to be in an optimum position to recover otherwise unrecoverable reserves in an injection pattern bounded by Well Nos. 122, 116, 134, 147 and 127. According to Rule 104, Paragraph C, Section I, "only tracts committed to active secondary recovery projects shall be permitted more than four wells."

*700' from the North Line and
100' from the East Line of
Sec 24
T24 S
R 36 E*

Attached for your review are Forms C-101 and C-102, Attachment "B", a plat showing the entire Unit, and Attachment "A", a history of the Unit's performance to date.

Should there be any questions, please call us collect at 915-682-4341.

*Inasmuch as this unorthodox
location is well within
the Cooper Jal Unit Area and
above-described location is
hereby approved.*

Very truly yours,

RESERVE OIL, INC.

*cannot impair any other operator's
rights,*
Clarence R. Chandler
Clarence R. Chandler

ck
Enclosures
cc: NMOCC-Hobbs

**NEW MEXICO OIL CONSERVATION COMMISSION
WELL LOCATION AND ACREAGE DEDICATION PLAT**

Form C-102
Supersedes C-128
Effective 1-1-65

All distances must be from the outer boundaries of the Section

Operator Reserve Oil Inc.			Lease Cooper Jal Unit		Well No. 151
Unit Letter A	Section 24	Township 24 South	Range 36 East	County Lea	
Actual Footage Location of Well: 771 feet from the North line and 170 feet from the East line					
Ground Level Elev. 3303.5	Producing Formation Queen		Pool Langlie-Mattix		Dedicated Acreage: *

1. Outline the acreage dedicated to the subject well by colored pencil or hatchure marks on the plat below.
2. If more than one lease is dedicated to the well, outline each and identify the ownership thereof (both as to working interest and royalty).
3. If more than one lease of different ownership is dedicated to the well, have the interests of all owners been consolidated by communitization, unitization, force-pooling, etc?

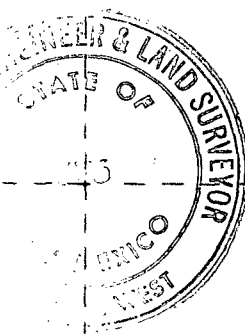
☒ Yes ☐ No If answer is "yes," type of consolidation **Unitization**

If answer is "no," list the owners and tract descriptions which have actually been consolidated. (Use reverse side of this form if necessary.) _____

No allowable will be assigned to the well until all interests have been consolidated (by communitization, unitization, forced-pooling, or otherwise) or until a non-standard unit, eliminating such interests, has been approved by the Commission.

Note: Gr. Elev. is 3.5 feet lower than Cooper No. 202 located in Sec. 19, Township 24 South, Range 37 East.

*** Well is committed to Active Secondary Recovery Project. Applying for administrative approval for unorthodox location based upon Rule 104-"C", Sec. I.**



CERTIFICATION

I hereby certify that the information contained herein is true and complete to the best of my knowledge and belief.

Clarence R. Chandler

Name
Clarence R. Chandler

Position
District Engineer

Company
Reserve Oil, Inc.

Date
8-15-77

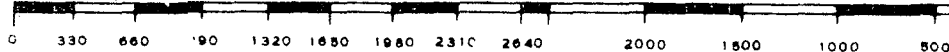
I hereby certify that the well location shown on this plat was plotted from field notes of actual surveys made by me or under my supervision, and that the same is true and correct to the best of my knowledge and belief.

Date Surveyed
August 10, 1977

Registered Professional Engineer and/or Land Surveyor

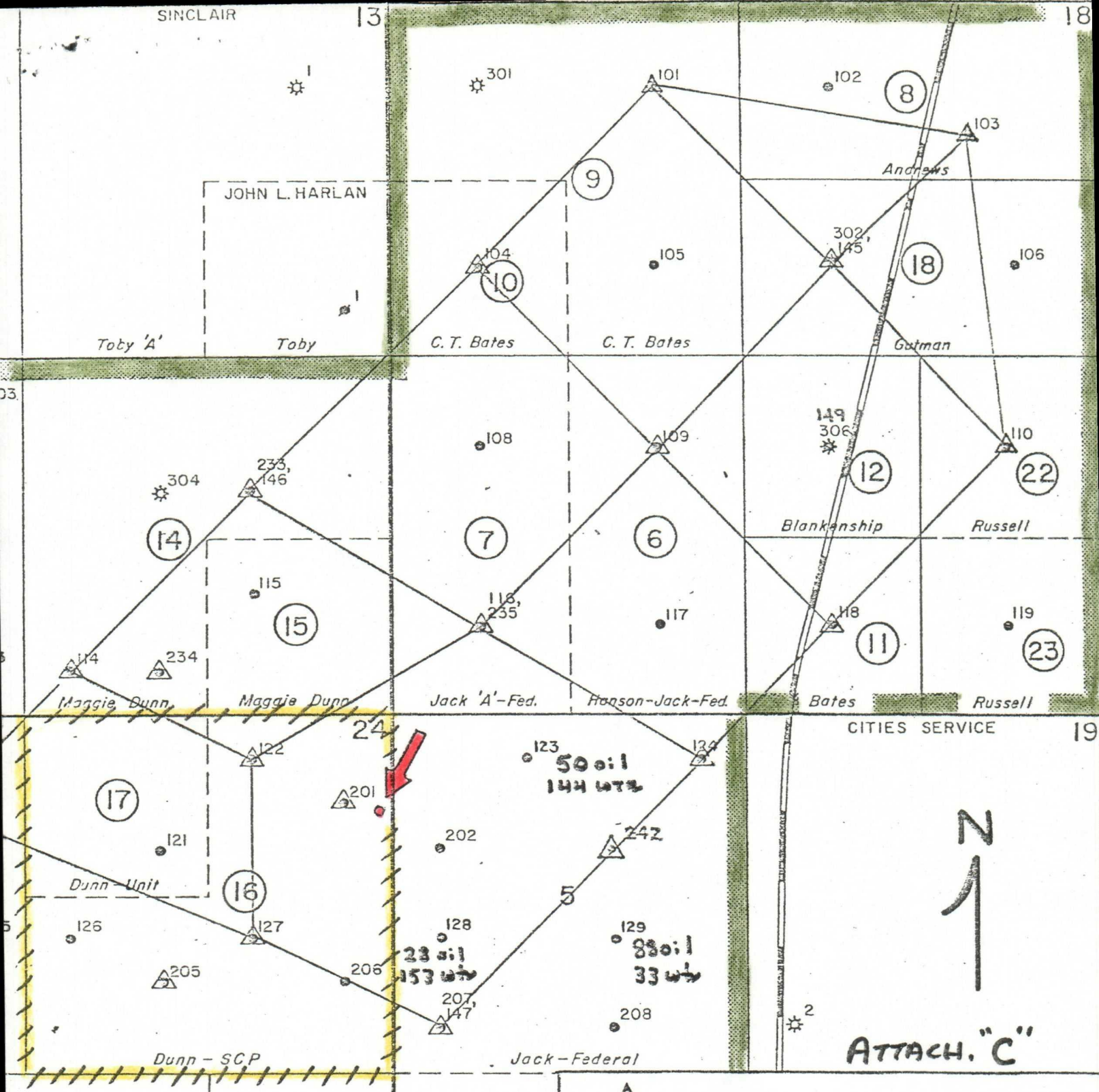
John W. West

Certificate No. **676**





MONTHLY PERFORMANCE
COOPER - JAL UNIT
LEA COUNTY, NEW MEXICO



RESERVE OIL, INC.

312 H B F BUILDING • MIDLAND, TEXAS 79701

Northeast Portion of
COOPER JAL UNIT
Jalmat & Langlie Mattix Fields
Lea County, New Mexico

OIL CONSERVATION COMMISSION

P. O. BOX 2088

SANTA FE, NEW MEXICO 87501

September 8, 1977

C
O
P
Y
Reserve Oil, Inc.
312 HBF Building
Midland, Texas 79701

Attention: Clarence R. Chandler

Administrative Order NSL-887

Gentlemen:

Reference is made to your application for approval of a non-standard location for your Cooper Jal Unit Well No. 151 to be located 700 feet from the North line and 100 feet from the East line of Section 24, Township 24 South, Range 36 East, NMPM, Langlie-Mattix Field, Lea County, New Mexico.

Inasmuch as this unorthodox location is well within the Cooper Jal Unit Area and cannot impair any other operator's rights, the above-described location is hereby approved.

Very truly yours,

JOE D. RAMEY,
Secretary-Director

JDR/RLS/dr

cc: Oil Conservation Commission - Hobbs
Oil & Gas Engineering Committee - Hobbs