

DATE IN 4/6/99	SUSPENSE 4/26/99	ENGINEER MS	LOGGED KV	TYPE NSL
-------------------	---------------------	----------------	--------------	-------------

ABOVE THIS LINE FOR DIVISION USE ONLY

NEW MEXICO OIL CONSERVATION DIVISION

- Engineering Bureau -

ADMINISTRATIVE APPLICATION COVERSHEET

THIS COVERSHEET IS MANDATORY FOR ALL ADMINISTRATIVE APPLICATIONS FOR EXCEPTIONS TO DIVISION RULES AND REGULATIONS

Application Acronyms:

[NSP-Non-Standard Proration Unit] [NSL-Non-Standard Location]
 [DD-Directional Drilling] [SD-Simultaneous Dedication]
 [DHC-Downhole Commingling] [CTB-Lease Commingling] [PLC-Pool/Lease Commingling]
 [PC-Pool Commingling] [OLS - Off-Lease Storage] [OLM-Off-Lease Measurement]
 [WFX-Waterflood Expansion] [PMX-Pressure Maintenance Expansion]
 [SWD-Salt Water Disposal] [IPI-Injection Pressure Increase]
 [EOR-Qualified Enhanced Oil Recovery Certification] [PPR-Positive Production Response]

[1] TYPE OF APPLICATION - Check Those Which Apply for [A]

[A] Location - Spacing Unit - Directional Drilling
☒ NSL ☐ NSP ☐ DD ☐ SD

APR - 6 1999

Check One Only for [B] and [C]

[B] Commingling - Storage - Measurement

☐ DHC ☐ CTB ☐ PLC ☐ PC ☐ OLS ☐ OLM

[C] Injection - Disposal - Pressure Increase - Enhanced Oil Recovery

☐ WFX ☐ PMX ☐ SWD ☐ IPI ☐ EOR ☐ PPR

[2] NOTIFICATION REQUIRED TO: - Check Those Which Apply, or ☐ Does Not Apply

[A] ☐ Working, Royalty or Overriding Royalty Interest Owners

[B] ☒ Offset Operators, Leaseholders or Surface Owner

[C] ☐ Application is One Which Requires Published Legal Notice

[D] ☒ Notification and/or Concurrent Approval by BLM or SLO

U.S. Bureau of Land Management - Commissioner of Public Lands, State Land Office

[E] ☐ For all of the above, Proof of Notification or Publication is Attached, and/or,

[F] ☐ Waivers are Attached

[3] INFORMATION / DATA SUBMITTED IS COMPLETE - Statement of Understanding

I hereby certify that I, or personnel under my supervision, have read and complied with all applicable Rules and Regulations of the Oil Conservation Division. Further, I assert that the attached application for administrative approval is accurate and complete to the best of my knowledge and where applicable, verify that all interest (WI, RI, ORRI) is common. I understand that any omission of data, information or notification is cause to have the application package returned with no action taken.

Note: Statement must be completed by an individual with supervisory capacity.

Peggy Bradfield



Regulatory/Compliance Administrator

Print or Type Name

Signature

Title

Date

BURLINGTON RESOURCES

SAN JUAN DIVISION

Sent Federal Express

Mr. Michael Stogner
New Mexico Oil Conservation Division
2040 South Pacheco
Santa Fe, New Mexico 87505

Re: El Paso #1B
2165'FNL, 440'FWL Section 20, T-29-N, R-9-W, San Juan County
30-045-not assigned

Dear Mr. Stogner:

Burlington Resources is applying for administrative approval of an unorthodox gas well location for the Blanco Mesaverde pool. This location is at the request of the Bureau of Land Management to avoid placing the well in Canyon Largo as shown on the topographic map. The standard windows for this well are covered in Order #10987A and are also shown on the attached topographic map. The extreme southwest corner of the standard windows is now the El Paso #3 located 2210'FNL, 620'FWL, a Pictured Cliffs well. It is intended to twin the El Paso #3 location, utilizing part of it for the proposed El Paso #1B location.

Production from the Blanco Mesa Verde pool is to be included in a standard 320 gas spacing and proration unit comprising the west half (W/2) of Section 20 and is to be dedicated to the El Paso #1A (30-045-22778) located at 500'FNL, 1800'FWL of Section 20 and the El Paso #1 (30-045-11795) located at 1600'FSL, 1500'FWL of Section 20 which was plugged and abandoned in the Mesaverde and recompleted in the Fruitland Coal in September 1989.

The following attachments are for your review:

- Application for Permit to Drill.
- Completed C-102 at referenced location.
- Offset operators/owners plat
- 7.5 minute topographic map

Three copies of this application are being submitted to offset operators by certified mail with a request that they furnish you with a Waiver of Objection, keep one copy for their files and return one copy to this office. We appreciate your earliest consideration of this application.

Sincerely,



Peggy Bradfield
Regulatory/Compliance Administrator

xc: NMOCD - Aztec District Office
Bureau of Land Management

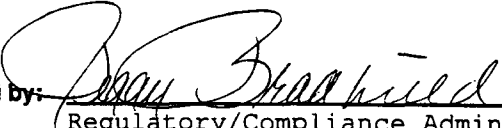
WAIVER

_____ hereby waives objection to Burlington Resources' application for a non-standard location for the El Paso #1B as proposed above.

By: _____ Date: _____

UNITED STATES
DEPARTMENT OF THE INTERIOR
BUREAU OF LAND MANAGEMENT

APPLICATION FOR PERMIT TO DRILL, DEEPEN, OR PLUG BACK

1a.	Type of Work DRILL	5.	Lease Number NM-0560422 Unit Reporting Number
1b.	Type of Well GAS	6.	If Indian, All. or Tribe
2.	Operator BURLINGTON RESOURCES Oil & Gas Company	7.	Unit Agreement Name
3.	Address & Phone No. of Operator PO Box 4289, Farmington, NM 87499 (505) 326-9700	8.	Farm or Lease Name El Paso
4.	Location of Well 2165' FNL, 440' FWL Latitude 36° 42.7, Longitude 107° 48.5	9.	Well Number 1B
10.	Field, Pool, Wildcat Blanco Mesaverde	11.	Sec., Twn, Rge, Mer. (NMPM) Sec. 20, T-29-N, R-9-W API # 30-045-
14.	Distance in Miles from Nearest Town 2 miles from Blanco	12.	County San Juan
15.	Distance from Proposed Location to Nearest Property or Lease Line 440'	13.	State NM
16.	Acres in Lease	17.	Acres Assigned to Well 320 W/2
18.	Distance from Proposed Location to Nearest Well, Drig, Compl, or Applied for on this Lease 200'	20.	Rotary or Cable Tools Rotary
19.	Proposed Depth 4724'	22.	Approx. Date Work will Start
21.	Elevations (DF, FT, GR, Etc.) 5625'		
23.	Proposed Casing and Cementing Program See Operations Plan attached		
24.	Authorized by:  Regulatory/Compliance Administrator		Date <u>2-1-99</u>

PERMIT NO. _____ APPROVAL DATE _____
APPROVED BY _____ TITLE _____ DATE _____

Archaeological Report to be submitted

Threatened and Endangered Species Report to be submitted

NOTE: This format is issued in lieu of U.S. BLM Form 3160-3

Title 18 U.S.C. Section 1001, makes it a crime for any person knowingly and willfully to make to any department or agency of the United States any false, fictitious or fraudulent statements or presentations as to any matter within its jurisdiction.

District I
PO Box 1980, Hobbs, NM 88241-1980

District II
PO Drawer 00, Artesia, NM 88211-0719

District III
1000 Rio Brazos Rd., Aztec, NM 87410

District IV
PO Box 2088, Santa Fe, NM 87504-2088

State of New Mexico
Energy, Minerals & Natural Resources Department

OIL CONSERVATION DIVISION
PO Box 2088
Santa Fe, NM 87504-2088

Form C
Revised February 21,
Instructions on
Submit to Appropriate District Of
State Lease - 4 Co
Fee Lease - 3 Co

☐ AMENDED REPORT

WELL LOCATION AND ACREAGE DEDICATION PLAT

*API Number 30-039-		*Pool Code 72319	*Pool Name Blanco Mesaverde
*Property Code	*Property Name EL PASO		*Well Number 18
*OGRID No. 14538	*Operator Name BURLINGTON RESOURCES OIL & GAS COMPANY		*Elevation 5625'

¹⁰ Surface Location

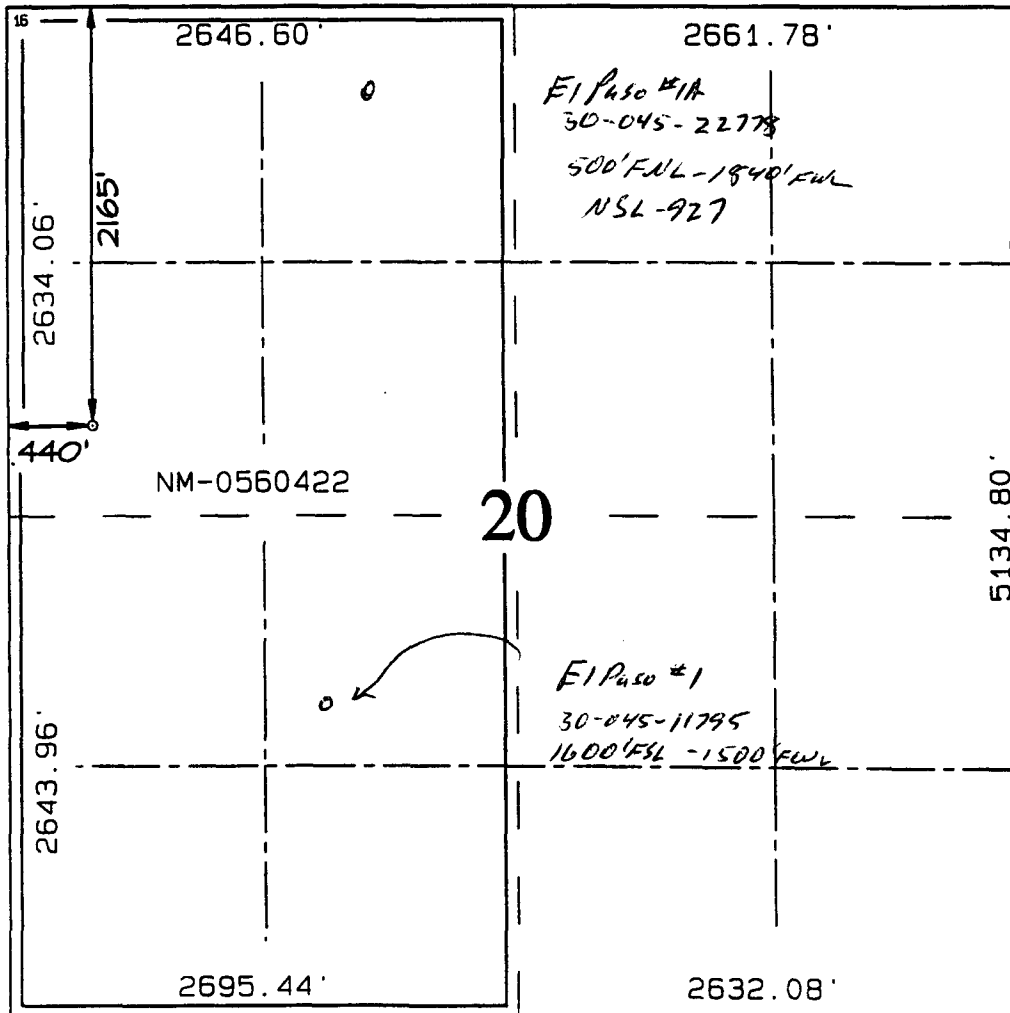
UL or lot no.	Section	Township	Range	Lot Idn	Feet from the	North/South line	Feet from the	East/West line	County
E	20	29N	9W		2165	NORTH	440	WEST	SAN JUAN

¹¹ Bottom Hole Location If Different From Surface

UL or lot no.	Section	Township	Range	Lot Idn	Feet from the	North/South line	Feet from the	East/West line	County

¹² Dedicated Acres W/320	¹³ Joint or Infill	¹⁴ Consolidation Code	¹⁵ Order No.
--	-------------------------------	----------------------------------	-------------------------

NO ALLOWABLE WILL BE ASSIGNED TO THIS COMPLETION UNTIL ALL INTERESTS HAVE BEEN CONSOLIDATED OR A NON-STANDARD UNIT HAS BEEN APPROVED BY THE DIVISION



¹⁷ OPERATOR CERTIFICATION

I hereby certify that the information contained here is true and complete to the best of my knowledge and belief.

Peggy Bradfield
Signature

Peggy Bradfield

Printed Name

Regulatory Administrator

Title

2-1-99

Date

¹⁸ SURVEYOR CERTIFICATION

I hereby certify that the well location shown on this plat was plotted from field notes of actual surveys made or under my supervision, and that the same is true and correct to the best of my belief.

DECEMBER 9, 1998

Date of Survey

Signature and Seal of Professional Surveyor

NEALE C. EDWARDS
NEW MEXICO
6857
Certificate Number

OPERATIONS PLAN

Well Name: El Paso #1B
Surface Location: 2165' FNL, 440' FWL, Section 20, T-29-N, R-9-W
San Juan County, New Mexico
Latitude 36° 42.7, Longitude 107° 48.5
Formation: Blanco Mesa Verde
Elevation: 5625' GL

<u>Formation Tops:</u>	<u>Top</u>	<u>Bottom</u>	<u>Contents</u>
Surface	San Jose	808'	aquifer
Ojo Alamo	808'	1014'	aquifer
Kirtland	1014'	1526'	gas
Fruitland	1526'	2025'	gas
Pictured Cliffs	2025'	2182'	gas
Lewis	2182'	2724'	gas
Intermediate TD	2282'		
Mesa Verde	2724'	3021'	gas
Chacra	3021'	3725'	gas
Massive Cliff House	3725'	3797'	gas
Menefee	3797'	4324'	gas
Point Lookout	4324'		gas
Total Depth	4724'		

Logging Program:

Cased hole logging - Gamma Ray, Cement bond from surface to TD
Mud Logs/Coring/DST - none

Mud Program:

<u>Interval- MD</u>	<u>Type</u>	<u>Weight</u>	<u>Vis.</u>	<u>Fluid Loss</u>
0- 300'	Spud	8.4-9.0	40-50	no control
300- 2282'	LSND	8.4-9.0	30-60	no control
2282- 4724'	Air/Mist	n/a	n/a	n/a

Pit levels will be visually monitored to detect gain or loss of fluid control.

Casing Program (as listed, the equivalent, or better):

<u>Hole Size</u>	<u>Measured Depth</u>	<u>Csg Size</u>	<u>Weight</u>	<u>Grade</u>
12 1/4"	0' - 300'	9 5/8"	32.3#	H-40
8 3/4"	0' - 2282'	7"	20.0#	J-55
6 1/4"	2182' - 4724'	4 1/2"	10.5#	J-55

Tubing Program: 0' - 4724' 2 3/8" 4.7# J-55

BOP Specifications, Wellhead and Tests:

Surface to Intermediate TD -

11" 2000 psi minimum double gate BOP stack (Reference Figure #1).
After nipple-up prior to drilling out surface casing, rams and casing will be tested to 600 psi for 30 minutes.

BOP Specifications, Wellhead and Tests (cont'd):**Intermediate TD to Total Depth -**

11" 2000 psi minimum double gate BOP stack (Reference Figure #1). After nipple-up prior to drilling out intermediate casing, rams and casing will be tested to 1500 psi for 30 minutes.

Surface to Total Depth -

2" nominal, 2000 psi minimum choke manifold (Reference Figure #3).

Completion Operations -

7 1/16" 2000 psi double gate BOP stack (Reference Figure #2). After nipple-up prior to completion, pipe rams, casing and liner top will be tested to 2000 psi for 15 minutes.

Wellhead -

9 5/8" x 7" x 2 3/8" x 2000 psi tree assembly.

General -

- Pipe rams will be actuated once each day and blind rams will be actuated once each trip to test proper functioning.
- An upper kelly cock valve with handle available and drill string valves to fit each drill string will be available on the rig floors at all times.
- BOP pit level drill will be conducted weekly for each drill crew.
- All BOP tests & drills will be recorded in daily drilling reports.
- Blind and pipe rams will be equipped with extension hand wheels.

Cementing:

9 5/8" surface casing - cement with 239 sx Class "B" cement with 1/4# flocele/sx and 3% calcium chloride (282 cu.ft. of slurry, 200% excess to circulate to surface). WOC 8 hrs. Test casing to 600 psi for 30 minutes.

Saw tooth guide shoe on bottom. Bowspring centralizers will be run in accordance with Onshore Order #2.

7" intermediate casing -

Lead w/195 sx Class "B" w/3% sodium metasilicate, 5# gilsonite/sx, 2% gel and 0.5# flocele/sx. Tail w/85 sx 50/50 Class "B" Poz w/2% calcium chloride, 5# gilsonite/sx and 0.5# flocele/sx (686 cu.ft. of slurry, 100% excess to circulate to surface.) WOC minimum of 8 hours before drilling out intermediate casing. If cement does not circulate to surface, a CBL will be run to determine TOC. Test casing to 1500 psi for 30 minutes.

7" intermediate casing alternative two stage: Stage collar at 1450'. First stage: cement with 53 sx Class "B" cmt with 7 pps gilsonite, 1/2 pps cellophane, 3% sodium metasilicate. Tailed w/68 sx Class "B" 50/50 poz w/2% gel, 7 pps Gilsonite, 2% calcium chloride, 0.5 pps Cellophane. Second stage: 150 sx Class "B" with 3% sodium metasilicate, 1/2 pps Cellophane, 7 pps Gilsonite (686 cu.ft., 100% excess to circulate to surface).

Cement nose guide shoe on bottom with float collar spaced on top of shoe joint. Bowspring centralizers spaced every other joint off bottom, to the base of the Ojo Alamo at 1014'. Two turbolating centralizers at the base of the Ojo Alamo at 1014'. Bowspring centralizers spaced every fourth joint from the base of the Ojo Alamo to the base of the surface casing.

4 1/2" Production Liner -

Cement to circulate liner top. Pump 297 sx 50/50 Class "B" Poz w/1/4# flocele/sx, 2% gel, 0.1% retardant, 5# gilsonite/sx and 0.4% fluid loss additive (391 cu.ft., 50% excess to circulate liner top). WOC a minimum of 18 hrs prior to completing.

Cement nose guide shoe on bottom with float collar spaced on top of shoe joint. The liner hanger will have a rubber packoff.

- If hole conditions permit, an adequate water spacer will be pumped ahead of each cement job to prevent cement/ mud contamination or cement hydration.

Special Drilling Operations (Air/Mist Drilling):

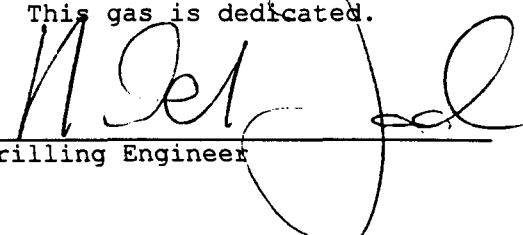
The following equipment will be operational while gas/mist drilling:

- An anchored blooie line will be utilized to discharge all cuttings and circulating medium to the blow pit a minimum of 100' from the wellhead.
- The blooie line will be equipped with an automatic igniter or pilot light.
- Compressors will be located a minimum of 100' from the wellhead in the opposite direction from the blooie line.
- Engines will have spark arresters or water cooled exhaust.
- The rotating head will be properly lubricated and maintained.
- A float valve will be utilized above the bit.
- Mud circulating equipment, water, and mud materials will be sufficient to maintain control of the well.

Additional Information:

- The Mesa Verde formation will be completed.
- No abnormal temperatures or hazards are anticipated.
- Anticipated pore pressures are as follows:

Fruitland Coal	800 psi
Pictured Cliffs	800 psi
Mesa Verde	700 psi
- Sufficient LCM will be added to the mud system to maintain well control, if lost circulation is encountered below the top of the Pictured Cliffs.
- The west half of Section 20 is dedicated to the Mesa Verde.
- This gas is dedicated.


Drilling Engineer2/23/99
Date

BURLINGTON RESOURCES OIL AND GAS COMPANY

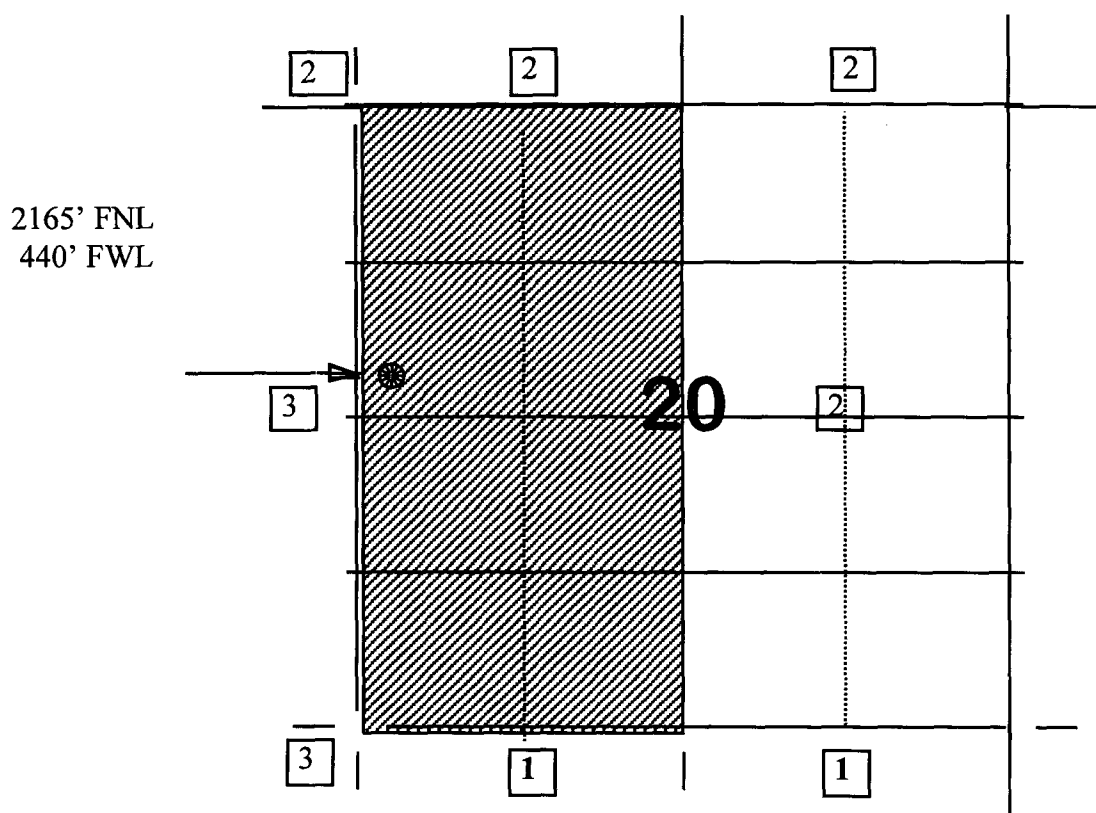
El Paso #1B

OFFSET OPERATOR/OWNER PLAT

Mesaverde Formation

Nonstandard Location

Township 29 North, Range 9 West



1) Burlington Resources

2) Amoco Production Company - Land Dept.
Attn: Steve Trefz
P.O. Box 800
1670 Broadway
Denver, CO 80201

3) Cross Timbers Oil Company
Attn: Vaughn Vennerberg
810 Houston Street, Suite 2000
Fort Worth, TX 76102-6298

Re: El Paso #1B
2165'FNL, 440'FWL Section 20, T-29-N, R-9-W, San Juan County
30-045-not assigned

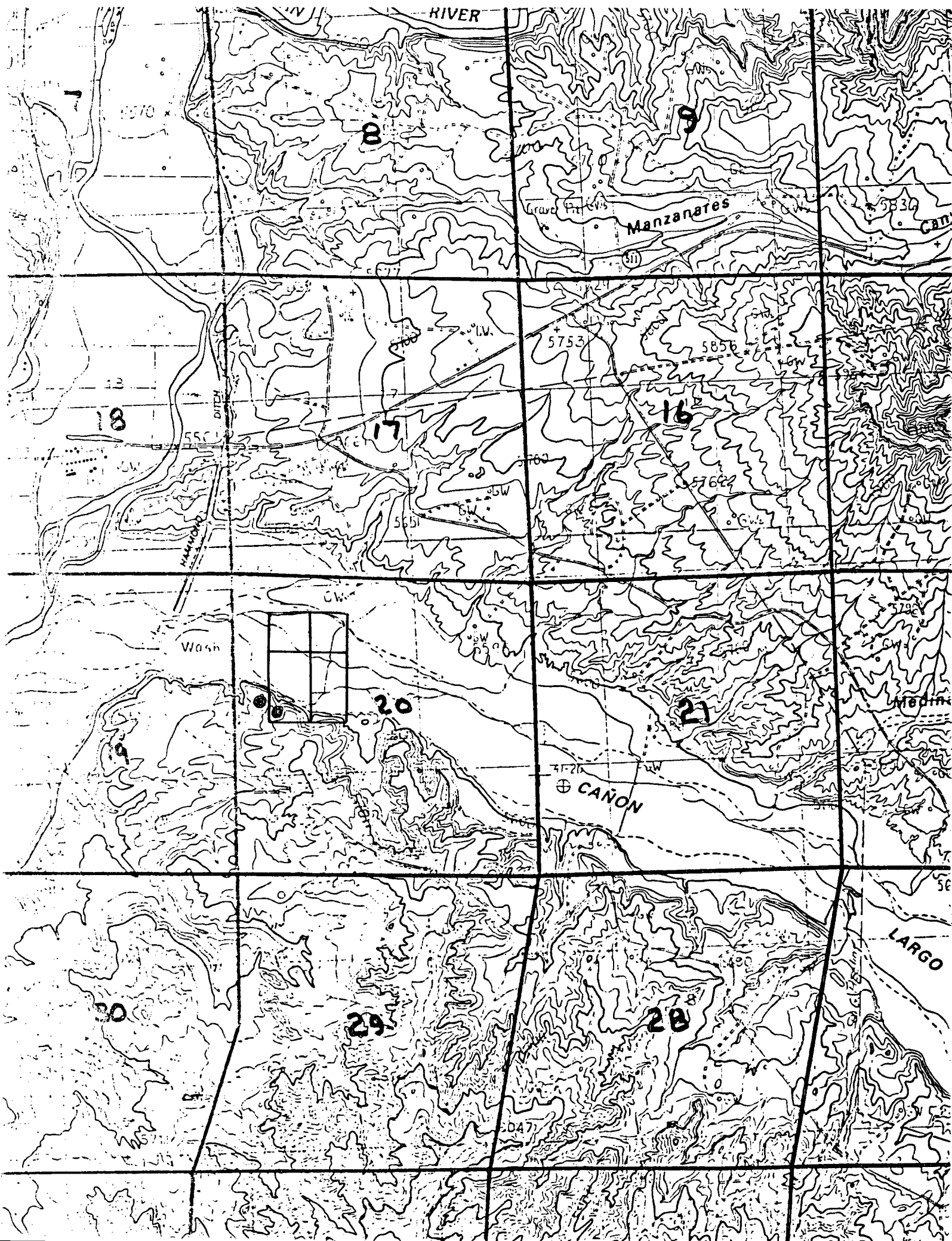
I hereby certify that the following offset operators/owners have been mailed notification of our application for non-standard location to drill the referenced well.

Amoco Production Company
Att: Steve Trefz
PO Box 800
1670 Broadway
Denver, CO 80201

Cross Timbers Oil Company
6001 US Highway 64
Bloomfield, NM 87413

A handwritten signature in cursive script, reading "Peggy Bradfield". The signature is written in dark ink and is positioned above the printed name.

Peggy Bradfield



OIL CONSERVATION COMMISSION

P. O. BOX 2088

SANTA FE, NEW MEXICO 87501

February 24, 1978

El Paso Natural Gas Company
P. O. Box 990
Farmington, New Mexico 87401

Administrative Order NSL-927

Gentlemen:

Reference is made to your application for approval of a non-standard location for your El Paso Well No. 1A to be located 500 feet from the North line and 1840 feet from the West line of Section 20, Township 29 North, Range 9 West, NMPN, Blanco Mesaverde Pool, San Juan County, New Mexico.

By authority granted me under the provisions of Rule 104 F of the Commission Rules and Regulations, the above-described unorthodox location is hereby approved.

Very truly yours,

JOE D. RAMEY
Secretary-Director

JD7/RLS/jr

cc: U.S. Geological Survey - Farmington
Oil & Gas Engineering Committee - Hobbs
OCC - Aztec