

**El Paso** NATURAL GAS  
COMPANY

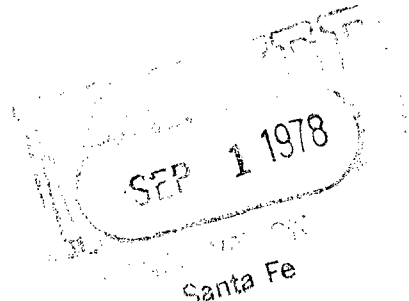
NSL - 971  
Rule 104-F  
9-20-78

P. O. BOX 990  
FARMINGTON, NEW MEXICO 87401  
PHONE: 505-325-2841

August 30, 1978

Mr. Joe Ramey  
New Mexico Oil Conservation Commission  
Post Office Box 2088  
Santa Fe, New Mexico 87501

*Amended  
application*



Dear Mr. Ramey:

This is a request for administrative approval for an unorthodox gas well location for a dual well in the Blanco Pictured Cliffs Ext. and Blanco Mesa Verde pools.

It is intended to locate the El Paso Natural Gas Company's Mudge #12A at 1300' from the South line and 2230' from the East line of Section 17, T-31-N, R-11-W, San Juan County, New Mexico.

Extremely rough terrain consisting of sandstone cliffs and ledges covers the southeast corner of this section and this makes it impossible to build an orthodox gas well location.

All operators of proration units offsetting the proposed unorthodox location have been notified of this application by certified mail.

Plats showing the proposed dual well location and the terrain of Section 17, along with an ownership plat, are attached.

Yours truly,

*Don Walker*

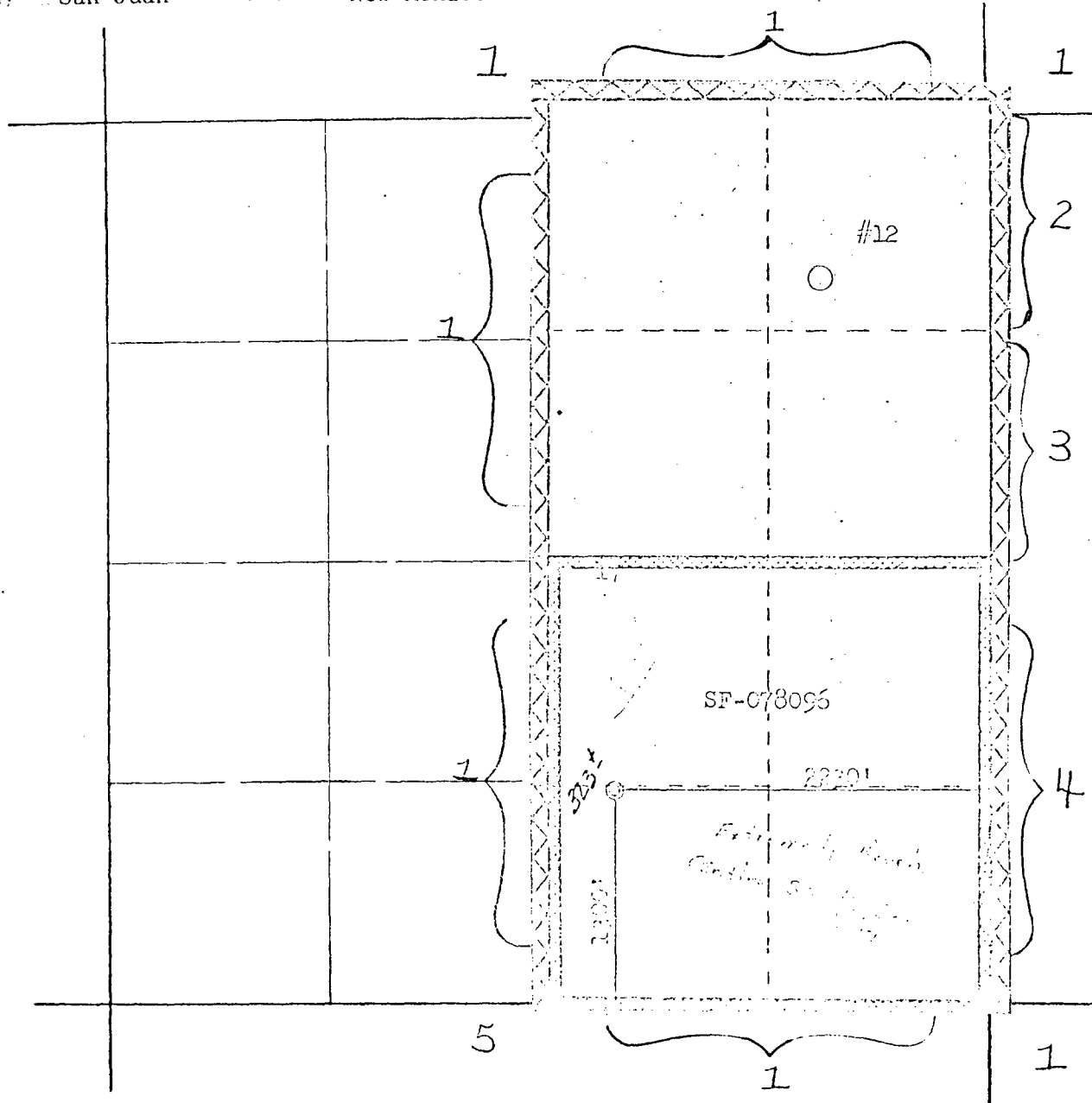
D. C. Walker  
Project Drilling Engineer

DCW:pb

Well Name      Madge #12 A , BLANCO PICTURED CLIFFS/BLANCO MESAVERDE

Footage---- 1300 FSL, 2230 FEL

County .. San Juan      State .. New Mexico      Section 17      Township 31N      Range 11W



- (1) EL PASO NATURAL GAS COMPANY
- (2) GULF OIL CORPORATION
- (3) ENERGY RESERVES GROUP
- (4) SUPRON ENERGY CORPORATION
- (5) SOUTHLAND ROYALTY COMPANY

All distances must be from the outer boundaries of the Section.

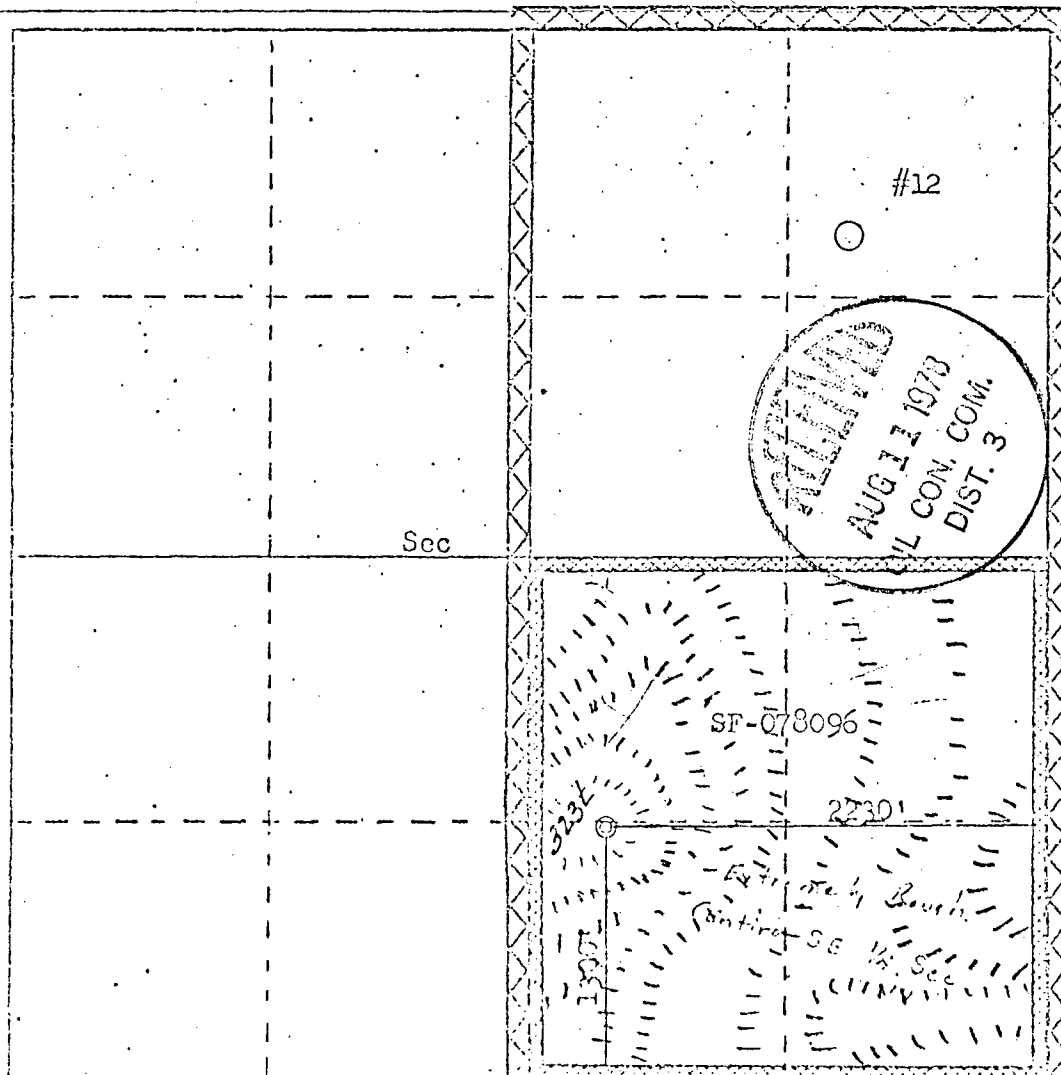
Operator <b>EL PASO NATURAL GAS COMPANY</b>		Lease <b>MUDCE (SF-078096)</b>		Well No. <b>12A</b>
Tract Letter <b>0</b>	Section <b>17</b>	Township <b>31N</b>	Range <b>11W</b>	County <b>San Juan</b>
Actual Footage Location of Well: <b>1300</b> feet from the <b>South</b> line and <b>2230</b> feet from the <b>East</b> line				
Ground Level Elev. <b>6315</b>	Producing Formation <b>PICTURED CLIFFS-MESA VERDE</b>	Face <b>BLANCO PICTURED CLIFFS EXT. BLANCO MESA VERDE</b>		Dedicated Acreage: <b>160.00 &amp; 320.00</b>

1. Outline the acreage dedicated to the subject well by colored pencil or hatchure marks on the plat below.
2. If more than one lease is dedicated to the well, outline each and identify the ownership thereof (both as to working interest and royalty).
3. If more than one lease of different ownership is dedicated to the well, have the interests of all owners been consolidated by communitization, unitization, force-pooling, etc?

☐ Yes ☐ No If answer is "yes," type of consolidation \_\_\_\_\_

If answer is "no," list the owners and tract descriptions which have actually been consolidated. (Use reverse side of this form if necessary.) \_\_\_\_\_

No allowable will be assigned to the well until all interests have been consolidated (by communitization, unitization, forced-pooling, or otherwise) or until a non-standard unit, eliminating such interests, has been approved by the Commission.



#### CERTIFICATION

I hereby certify that the information contained herein is true and complete to the best of my knowledge and belief.

*D. G. Bues*  
Name

Position **Drilling Clerk**

Employer **El Paso Natural Gas Co.**

Date **August 10, 1978**

I hereby certify that the well location shown on this plat was plotted from field notes of actual surveys made by me or under my supervision, and that the same is true and correct to the best of my knowledge and belief.

Date Surveyed **July 1978**

Responsible Party **Drilling Clerk**  
on **12** **1978**

*Drilling Clerk*  
Signature  
F. J. Bues Jr.  
Certification

**El Paso** NATURAL GAS  
COMPANY

SEP 14 1978

Santa Fe

P.O. BOX 990  
FARMINGTON, NEW MEXICO 87401

PHONE: 505-325-2841

August 30, 1978

Southland Royalty Company  
Gulf Oil Corporation  
Energy Reserves Group  
Supron Energy Corporation

Re: Unorthodox Gas Well Location

NSL 971

Gentlemen:

El Paso Natural Gas Company has requested administrative approval for an unorthodox location for a dual gas well in the Blanco Pictured Cliffs Ext. and Blanco Mesa Verde pools.

It is intended to locate the El Paso Natural Gas Company's Mudge #12A at 1300' from the South line and 2230' from the East line of Section 17, T-31-N, R-11-W, San Juan County, New Mexico.

Extremely rough terrain consisting of sandstone cliffs and ledges cover most of the southeast corner of this section and this makes it impossible to build an orthodox location.

In compliance with New Mexico Oil Conservation Commission rules, we are notifying you, as operators of an offsetting proration unit, of our application for administrative approval for the aforementioned unorthodox gas well location. Enclosed are three copies of this letter. If there is no objection to this location, please sign and return one copy to the New Mexico Oil Conservation Commission, Post Office Box 2088, Santa Fe, New Mexico 87501; one copy to El Paso Natural Gas Company; and keep one copy for your files.

A plat showing the proposed dual well location and offsetting Pictured Cliffs and Mesa Verde lease ownership is attached.

Yours truly,

*Don Walker*

D. C. Walker  
Project Drilling Engineer

DCW:pb

Approved:

*B. J. Pankratz*  
by B. J. Pankratz, Manager-Engineering  
for Gulf Oil Corporation

Date: 9-11-78

**El Paso** NATURAL GAS  
COMPANY

P.O. BOX 990  
FARMINGTON, NEW MEXICO 87401  
PHONE: 505-325-2841

AUG 17 1978

August 10, 1978

Santa Fe

Southland Royalty Company  
Gulf Oil Corporation  
Energy Reserves Group  
Supron Energy Corporation

Re: Unorthodox Gas Well Location

Gentlemen:

El Paso Natural Gas Company has requested administrative approval for an unorthodox location for a well in the Blanco Mesa Verde pool.

It is intended to locate the El Paso Natural Gas Company's Mudge #12A at 1300' from the South line and 2230' from the East line of Section 17, T-31-N, R-11-W, San Juan County, New Mexico.

Extremely rough terrain consisting of sandstone cliffs and ledges cover most of the southeast corner of this section and this makes it impossible to build an orthodox location.

In compliance with New Mexico Oil Conservation Commission rules, we are notifying you, as operators of an offsetting proration unit, of our application for administrative approval for the aforementioned unorthodox gas well location. Enclosed are three copies of this letter. If there is no objection to this location, please sign and return one copy to the New Mexico Oil Conservation Commission, Post Office Box 2088, Santa Fe, New Mexico 87501; one copy to El Paso Natural Gas Company; and keep one copy for your files.

A plat showing the proposed well location and offsetting Mesa Verde lease ownership is attached.

Yours truly,

*Don Walker*

D. C. Walker  
Project Drilling Engineer

DCW:pb

Approved: *Haskell Fleetwood*  
Supron Energy Corporation  
Haskell Fleetwood, Vice President

Date: AUGUST 15, 1978

RECEIVED

SEP 5 1978

**El Paso** NATURAL GAS  
COMPANY

AUG 15 1978

P.O. BOX 990  
FARMINGTON, NEW MEXICO 87401  
PHONE: 505-325-2841

ENERGY RESERVES GROUP, INC.  
UNITED STATES OF AMERICA

August 10, 1978

Southland Royalty Company  
Gulf Oil Corporation  
Energy Reserves Group  
Supron Energy Corporation

Re: Unorthodox Gas Well Location

Gentlemen:

El Paso Natural Gas Company has requested administrative approval for an unorthodox location for a well in the Blanco Mesa Verde pool.

It is intended to locate the El Paso Natural Gas Company's Mudge #12A at 1300' from the South line and 2230' from the East line of Section 17, T-31-N, R-11-W, San Juan County, New Mexico.

Extremely rough terrain consisting of sandstone cliffs and ledges cover most of the southeast corner of this section and this makes it impossible to build an orthodox location.

In compliance with New Mexico Oil Conservation Commission rules, we are notifying you, as operators of an offsetting proration unit, of our application for administrative approval for the aforementioned unorthodox gas well location. Enclosed are three copies of this letter. If there is no objection to this location, please sign and return one copy to the New Mexico Oil Conservation Commission, Post Office Box 2088, Santa Fe, New Mexico 87501; one copy to El Paso Natural Gas Company; and keep one copy for your files.

A plat showing the proposed well location and offsetting Mesa Verde lease ownership is attached.

Yours truly,

*Don Walker*

D. C. Walker  
Project Drilling Engineer

DCW:pb

Approved: ENERGY RESERVES GROUP, INC.  
P.O. Box 1407  
Denver, Colorado 80201

Date: 8-23-78

By: *[Signature]*  
M.A. Church

Energy Reserves Group, Inc.  
P.O. Box 1407, Zip 80201  
First of Denver Plaza, Suite 3200  
633 Seventeenth Street  
Denver, Colorado  
Phone 303 572 3323



SEP 5 1978  
Energy Reserves Group

August 31, 1978

El Paso Natural Gas Company  
P. O. Box 990  
Farmington, New Mexico 87401

Attention: Mr. D. C. Walker

RE: Unorthodox Gas Well Location  
Mudge #12A - T31N-R11W - Section 17: SW $\frac{1}{4}$  NE $\frac{1}{4}$   
San Juan County, New Mexico

Gentlemen:

Enclosed is an original signature copy of your letter of inquiry dated August 10, 1978 -- signed by M. A. Church as Attorney In Fact and evidencing that Energy Reserves Group, Inc. has no objection to location of the proposed well as captioned.

By separate original signature copy of your letter, we are advising the New Mexico Oil Conservation Commission of this decision.

Very truly yours,

ENERGY RESERVES GROUP, INC.

D. E. Butler  
Western Rocky Mountain  
District Landman  
Western Region

DEB/lcb

Enclosures

cc: New Mexico Oil Conservation Commission  
P. O. Box 2088  
Santa Fe, New Mexico 87501

**El Paso** NATURAL GAS  
COMPANY

P. O. BOX 990  
FARMINGTON, NEW MEXICO 87401  
PHONE: 505-325-2811

August 10, 1978  
AUG 28 1978

Southland Royalty Company  
Gulf Oil Corporation  
Energy Reserves Group  
Supron Energy Corporation

Re: Unorthodox Gas Well Location

Gentlemen:

El Paso Natural Gas Company has requested administrative approval for an unorthodox location for a well in the Blanco Mesa Verde pool.

It is intended to locate the El Paso Natural Gas Company's Mudge #12A at 1300' from the South line and 2230' from the East line of Section 17, T-31-N, R-11-W, San Juan County, New Mexico.

Extremely rough terrain consisting of sandstone cliffs and ledges cover most of the southeast corner of this section and this makes it impossible to build an orthodox location.

In compliance with New Mexico Oil Conservation Commission rules, we are notifying you, as operators of an offsetting proration unit, of our application for administrative approval for the aforementioned unorthodox gas well location. Enclosed are three copies of this letter. If there is no objection to this location, please sign and return one copy to the New Mexico Oil Conservation Commission, Post Office Box 2088, Santa Fe, New Mexico 87501; one copy to El Paso Natural Gas Company; and keep one copy for your files.

A plat showing the proposed well location and offsetting Mesa Verde lease ownership is attached.

Yours truly,

*Don Walker*

D. C. Walker  
Project Drilling Engineer

DCW:pb

Approved:

*B. J. Pankratz*  
B. J. Pankratz, Manager-Engineering  
Gulf Oil Corporation

Date: 8-24-78



**El Paso** NATURAL GAS  
COMPANY

SEP 11 1978

P.O. BOX 990  
FARMINGTON, NEW MEXICO 87401  
PHONE: 505-325-2841

August 30, 1978

Southland Royalty Company  
Gulf Oil Corporation  
Energy Reserves Group  
Supron Energy Corporation

Re: Unorthodox Gas Well Location

Gentlemen:

El Paso Natural Gas Company has requested administrative approval for an unorthodox location for a dual gas well in the Blanco Pictured Cliffs Ext. and Blanco Mesa Verde pools.

It is intended to locate the El Paso Natural Gas Company's Mudge #12A at 1300' from the South line and 2230' from the East line of Section 17, T-31-N, R-11-W, San Juan County, New Mexico.

Extremely rough terrain consisting of sandstone cliffs and ledges cover most of the southeast corner of this section and this makes it impossible to build an orthodox location.

In compliance with New Mexico Oil Conservation Commission rules, we are notifying you, as operators of an offsetting proration unit, of our application for administrative approval for the aforementioned unorthodox gas well location. Enclosed are three copies of this letter. If there is no objection to this location, please sign and return one copy to the New Mexico Oil Conservation Commission, Post Office Box 2088, Santa Fe, New Mexico 87501; one copy to El Paso Natural Gas Company; and keep one copy for your files.

A plat showing the proposed dual well location and offsetting Pictured Cliffs and Mesa Verde lease ownership is attached.

Yours truly,

*Don Walker*

D. C. Walker  
Project Drilling Engineer

**RECEIVED**

SEP 5 1978

FARMINGTON DISTRICT

DCW:pb

Approved: *[Signature]*

Date: 9-8-78

**El Paso** NATURAL GAS  
COMPANY

SEP 18 1978

P. O. BOX 990  
FARMINGTON, NEW MEXICO 87401  
PHONE: 505-325-2841

Sent to

August 30, 1978

Southland Royalty Company  
Gulf Oil Corporation  
Energy Reserves Group  
Supron Energy Corporation

Re: Unorthodox Gas Well Location

Gentlemen:

El Paso Natural Gas Company has requested administrative approval for an unorthodox location for a dual gas well in the Blanco Pictured Cliffs Ext. and Blanco Mesa Verde pools.

It is intended to locate the El Paso Natural Gas Company's Mudge #12A at 1300' from the South line and 2230' from the East line of Section 17, T-31-N, R-11-W, San Juan County, New Mexico.

Extremely rough terrain consisting of sandstone cliffs and ledges cover most of the southeast corner of this section and this makes it impossible to build an orthodox location.

In compliance with New Mexico Oil Conservation Commission rules, we are notifying you, as operators of an offsetting proration unit, of our application for administrative approval for the aforementioned unorthodox gas well location. Enclosed are three copies of this letter. If there is no objection to this location, please sign and return one copy to the New Mexico Oil Conservation Commission, Post Office Box 2088, Santa Fe, New Mexico 87501; one copy to El Paso Natural Gas Company; and keep one copy for your files.

A plat showing the proposed dual well location and offsetting Pictured Cliffs and Mesa Verde lease ownership is attached.

Yours truly,

*Don Walker*

D. C. Walker  
Project Drilling Engineer

DCW:pb

Approved: SUPRON ENERGY CORPORATION

Date: September 7, 1978

*Haskell Fleetwood*  
Haskell Fleetwood, Vice President

**El Paso** NATURAL GAS  
COMPANY

RECEIVED

AUG 11 1978

FARMINGTON DISTRICT

P. O. BOX 990  
FARMINGTON, NEW MEXICO 87401  
PHONE: 505-325-2841

August 10, 1978

Southland Royalty Company  
Gulf Oil Corporation  
Energy Reserves Group  
Supron Energy Corporation

Re: Unorthodox Gas Well Location

Gentlemen:

El Paso Natural Gas Company has requested administrative approval for an unorthodox location for a well in the Blanco Mesa Verde pool.

It is intended to locate the El Paso Natural Gas Company's Mudge #12A at 1300' from the South line and 2230' from the East line of Section 17, T-31-N, R-11-W, San Juan County, New Mexico.

Extremely rough terrain consisting of sandstone cliffs and ledges cover most of the southeast corner of this section and this makes it impossible to build an orthodox location.

In compliance with New Mexico Oil Conservation Commission rules, we are notifying you, as operators of an offsetting proration unit, of our application for administrative approval for the aforementioned unorthodox gas well location. Enclosed are three copies of this letter. If there is no objection to this location, please sign and return one copy to the New Mexico Oil Conservation Commission, Post Office Box 2088, Santa Fe, New Mexico 87501; one copy to El Paso Natural Gas Company; and keep one copy for your files.

A plat showing the proposed well location and offsetting Mesa Verde lease ownership is attached.

Yours truly,

*Don Walker*

D. C. Walker  
Project Drilling Engineer

DCW:pb

Approved: *[Signature]*

District Production Mgr.

SOUTHLAND ROYALTY CO.

Date: 8-11-78

**El Paso** NATURAL GAS  
COMPANY

AUG 11 1978

P. O. BOX 990  
FARMINGTON, NEW MEXICO 87401  
PHONE: 505-325-2841

CONSERVATION COMMISSION

Santa Fe

August 10, 1978

NSL - 971  
Rule 104 F  
Aug 31, 1978

Mr. Joe Ramey  
New Mexico Oil Conservation Commission  
Post Office Box 2088  
Santa Fe, New Mexico 87501

Dear Mr. Ramey:

This is a request for administrative approval for an unorthodox gas well location in the Blanco Mesa Verde pool.

It is intended to locate the El Paso Natural Gas Company's Mudge #12A at 1300' from the South line and 2230' from the East line of Section 17, T-31-N, R-11-W, San Juan County, New Mexico.

Extremely rough terrain consisting of sandstone cliffs and ledges covers the southeast corner of this section and this makes it impossible to build an orthodox gas well location.

All operators of proration units offsetting the proposed unorthodox location have been notified of this application by certified mail.

Plats showing the proposed well location and the terrain of Section 17, along with an ownership plat, are attached.

Yours truly,

*Don Walker*

D. C. Walker  
Project Drilling Engineer

DCW:pb

# EL PASO NATURAL GAS COMPANY

Well Name Mudge #12 A

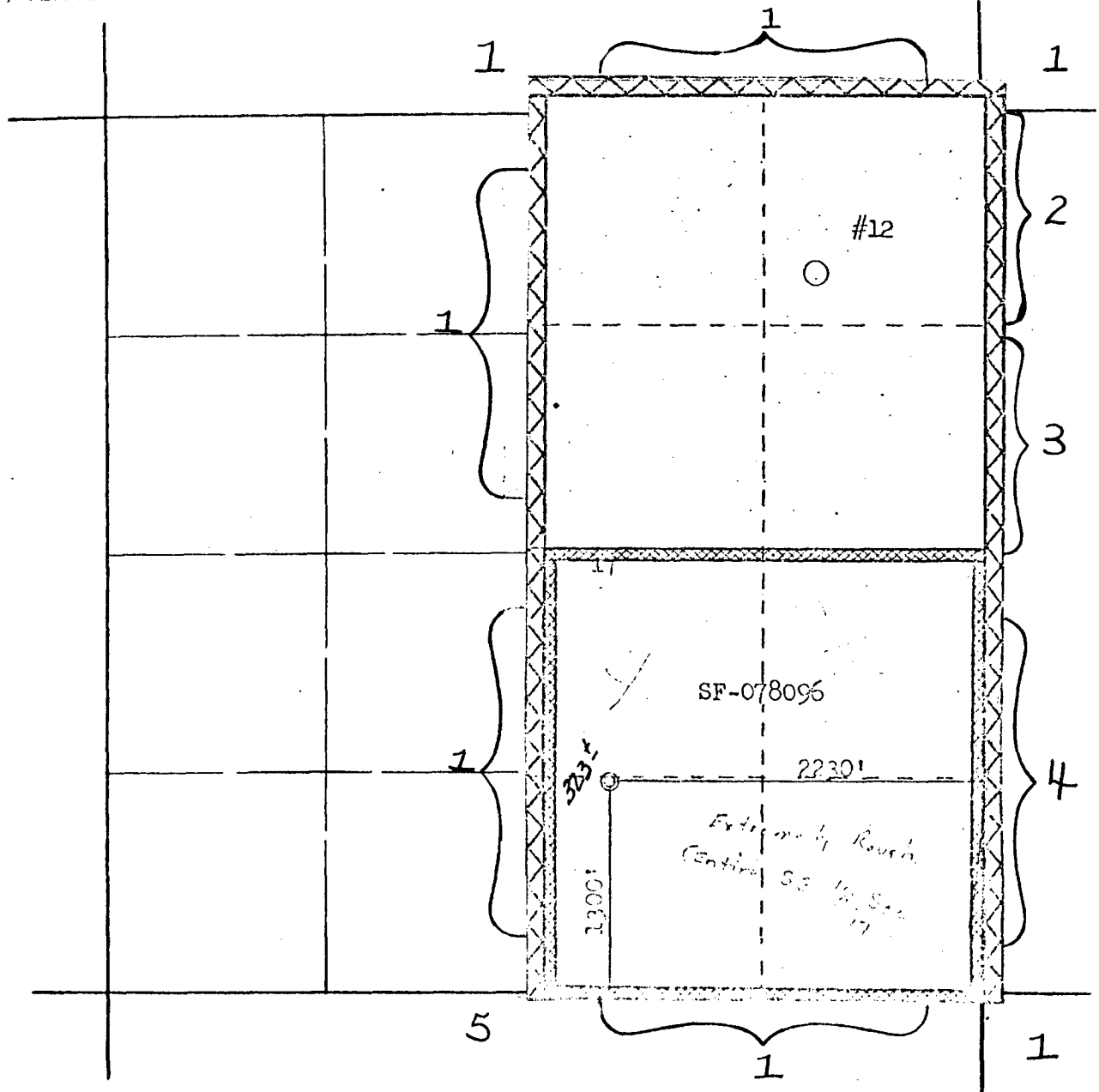
Footage----- 1300 FSL, 2230 FEL

## APPLICATION FOR NON-STANDARD LOCATION

County San Juan State New Mexico

Section 17 Township 31N

Range 11W



### REMARKS:

- (1) EL PASO NATURAL GAS COMPANY
- (2) GULF OIL CORPORATION
- (3) ENERGY RESERVES GROUP
- (4) SUPRON ENERGY CORPORATION
- (5) SOUTHLAND ROYALTY COMPANY

**NEW MEXICO OIL CONSERVATION COMMISSION  
WELL LOCATION AND ACREAGE DEDICATION PLAT**

Form C-102  
Supersedes C-122  
Effective 1-1-65

All distances must be from the outer boundaries of the Section.

Operator <b>EL PASO NATURAL GAS COMPANY</b>			Lease <b>MUDGE (SF-078096)</b>		Well No. <b>12A</b>
Unit Letter <b>0</b>	Section <b>17</b>	Township <b>31N</b>	Range <b>11W</b>	County <b>San Juan</b>	

Actual Footage Location of Well:

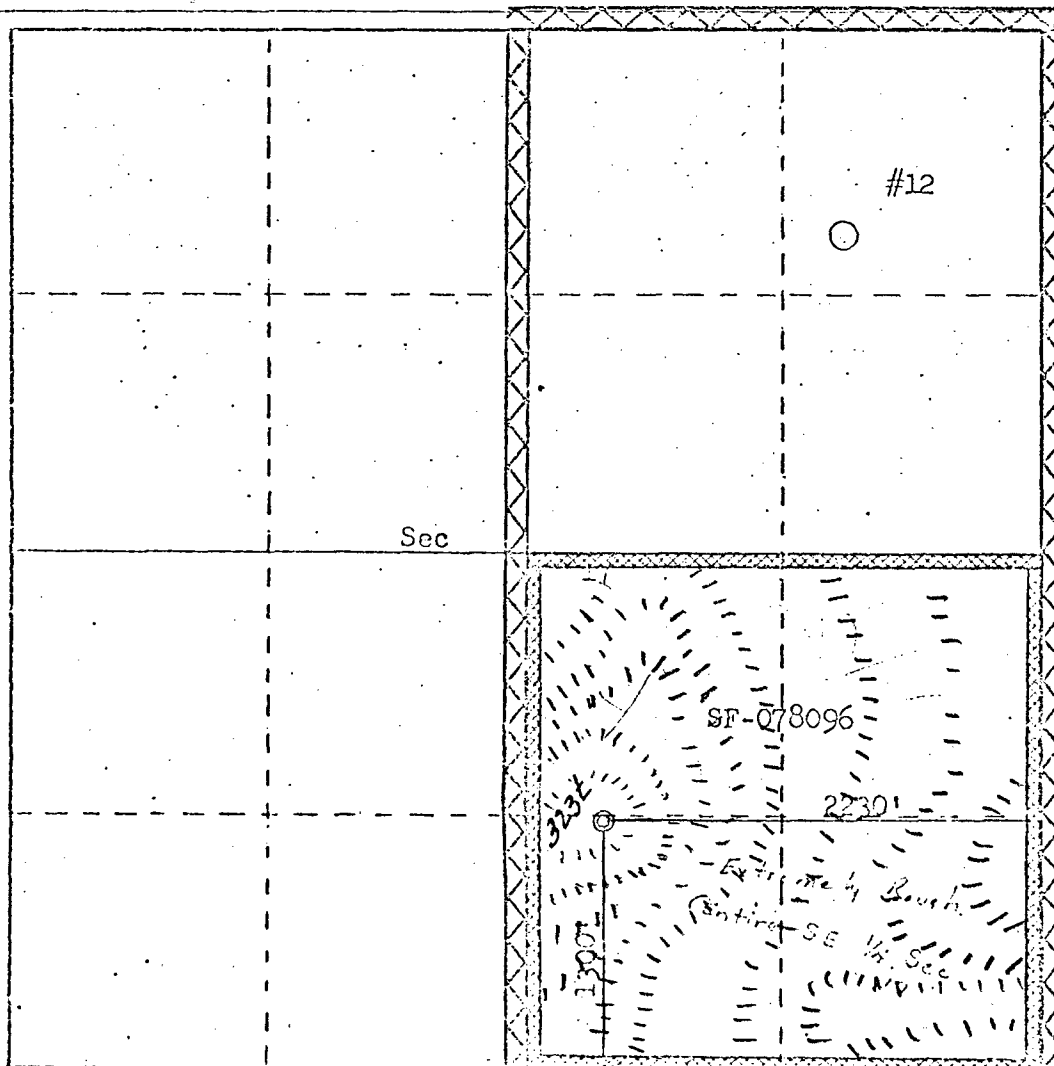
<b>1300</b>	feet from the	<b>South</b>	line and	<b>2230</b>	feet from the	<b>East</b>	line
Ground Level Elev. <b>6315</b>	Producing Formation <b>PICTURED CLIFFS-MESA VERDE</b>		Face <b>BLANCO PICTURED CLIFFS EXT. BLANCO MESA VERDE</b>			Dedicated Acreage <b>160.00 &amp; 320.00 acres</b>	

1. Outline the acreage dedicated to the subject well by colored pencil or hatchure marks on the plat below.
2. If more than one lease is dedicated to the well, outline each and identify the ownership thereof (both as to working interest and royalty).
3. If more than one lease of different ownership is dedicated to the well, have the interests of all owners been consolidated by communitization, unitization, force-pooling, etc?

☐ Yes    ☐ No    If answer is "yes," type of consolidation \_\_\_\_\_

If answer is "no," list the owners and tract descriptions which have actually been consolidated. (Use reverse side of this form if necessary.) \_\_\_\_\_

No allowable will be assigned to the well until all interests have been consolidated (by communitization, unitization, forced-pooling, or otherwise) or until a non-standard unit, eliminating such interests, has been approved by the Commission.



**CERTIFICATION**

I hereby certify that the information contained herein is true and complete to the best of my knowledge and belief.

*D. G. Buss*  
Name

Position **Drilling Clerk**

Employer **El Paso Natural Gas Co.**

Date **August 10, 1978**

I hereby certify that the well location shown on this plat was plotted from field notes of actual surveys made by me or under my supervision, and that the same is true and correct to the best of my knowledge and belief.

Date Surveyed **July 12, 1978**

Registered Professional Engineer and Land Surveyor

*Frank J. Herr, Jr.*  
F. J. Herr, Jr.  
Certification No. **3950**

OIL CONSERVATION COMMISSION  
Aztec DISTRICT

OIL CONSERVATION COMMISSION  
BOX 2088  
SANTA FE, NEW MEXICO

DATE 8/22/78

RE: Proposed MC \_\_\_\_\_  
Proposed DHC \_\_\_\_\_  
Proposed NSL XXX \_\_\_\_\_  
Proposed SWD \_\_\_\_\_  
Proposed WFX \_\_\_\_\_  
Proposed PMX \_\_\_\_\_

Dick Stamets

Gentlemen:

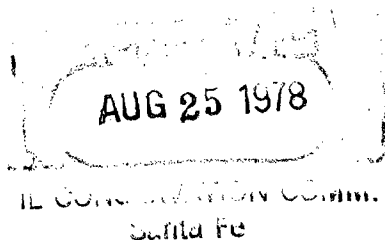
I have examined the application dated 8/10/78  
for the El Paso Natural Gas Co. Mudge #12A 0-17-31N-11W  
Operator Lease and Well No. Unit, S-T-R

and my recommendations are as follows:

Approve \_\_\_\_\_  
\_\_\_\_\_  
\_\_\_\_\_  
\_\_\_\_\_  
\_\_\_\_\_

Yours very truly,

AR Kendrick



✓

OIL CONSERVATION COMMISSION  
Aztec DISTRICT

OIL CONSERVATION COMMISSION  
BOX 2038  
SANTA FE, NEW MEXICO

DATE 8/22/78

RE: Proposed MC \_\_\_\_\_  
Proposed DHC \_\_\_\_\_  
Proposed NSL XXX \_\_\_\_\_  
Proposed SWD \_\_\_\_\_  
Proposed WFX \_\_\_\_\_  
Proposed PMX \_\_\_\_\_

Dick Stamets

Gentlemen:

I have examined the application dated 8/10/78  
for the El Paso Natural Gas Co. Mudge #12A 0-17-31N-11W  
Operator Lease and Well No. Unit, S-T-R

and my recommendations are as follows:

Approve PC and  
Blanco  
Blanco MV  
two pools

Yours very truly,

AR Kendrick