

BLACKWOOD & NICHOLS Co., LTD.

P. O. BOX 1237

DURANGO, COLORADO 81301

(303) 247-0728

February 6, 1980

NSL - 1152
Blanco Mesaverde
Rule 104 F
Immediate

Mr. Joe D. Ramey, Secretary-Director
New Mexico Energy Resources Board
New Mexico Oil Conservation Commission
P. O. Box 2088
Santa Fe, New Mexico 87501

Re: Application for a non-standard
location, Northeast Blanco Unit
Well No. 24R

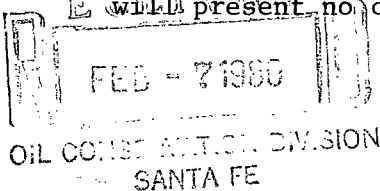
Dear Mr. Ramey:

As operator of the Northeast Blanco Unit, we are requesting administrative approval of a non-standard well location to be completed in the Mesaverde Formation.

We intend to drill the Northeast Blanco Unit Well No. 24R, a replacement well, located 760' F/SL - 2240' F/EL, O-17-30N-7W, Rio Arriba County, New Mexico.

As per the enclosed map the SW/4 of Section 17, T-30N-R7W, Rio Arriba County, New Mexico is mostly inundated by the Navajo Lake. Due to the lake we have surveyed the well site in the most practical location. While repairing a casing leak on the original Northeast Blanco Unit No. 24 well, located 420' F/SL - 2515' F/EL, Section 17, T-30N, R7W, Rio Arriba County, New Mexico, extreme mechanical difficulties were encountered, consequently, the well was plugged and abandoned.

All offset acreage is within the bounds of the Northeast Blanco Unit and will present no drainage problems to any offset operator.



Very truly yours,

BLACKWOOD & NICHOLS CO., LTD.

DeLasso Loos
DeLasso Loos, District Manager

DL:lr

cc: Oil Conservation Commission
Aztec, New Mexico 87401

United States Geological Survey
Durango, Colorado 81301

**NEW MEXICO OIL CONSERVATION COMMISSION
WELL LOCATION AND ACREAGE DEDICATION PLAT**

Form C-102
Supersedes C-128
Effective 1-1-65

All distances must be from the outer boundaries of the Section.

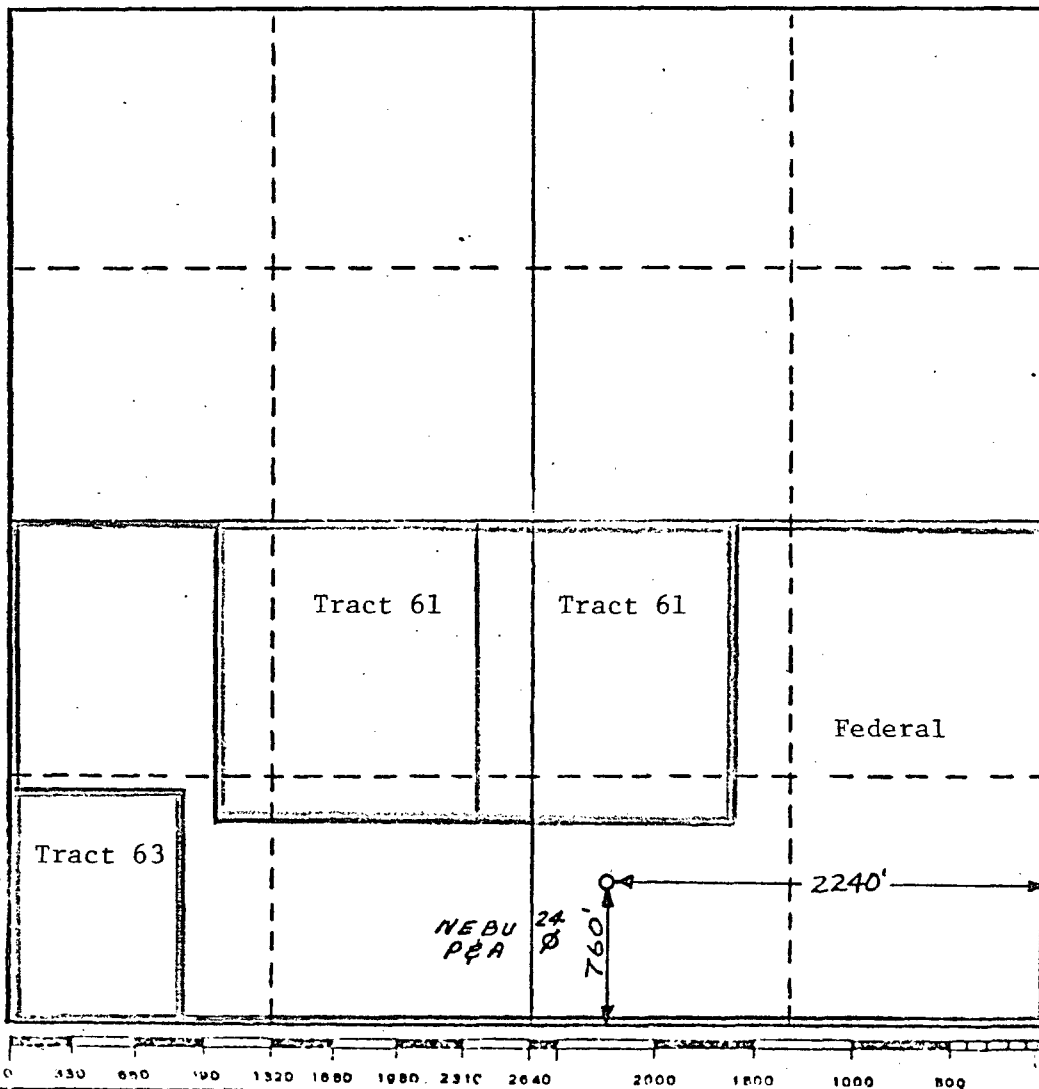
Operator BLACKWOOD & NICHOLS			Lease NORTHEAST BLANCO UNIT		Well No. 24-R
Unit Letter 0	Section 17	Township 30 N.	Range 7W.N.M.P.M	County RIO ARriba	
Actual Footage Location of Well: 760 feet from the south line and 2240 feet from the east line					
Ground Level Elev: 6269 U.G.	Producing Formation Mesaverde		Pool Blanco-Mesaverde		Dedicated Acreage: 320 Acres

1. Outline the acreage dedicated to the subject well by colored pencil or hachure marks on the plat below.
2. If more than one lease is dedicated to the well, outline each and identify the ownership thereof (both as to working interest and royalty).
3. If more than one lease of different ownership is dedicated to the well, have the interests of all owners been consolidated by communitization, unitization, force-pooling, etc?

☒ Yes ☐ No If answer is "yes," type of consolidation Unitization

If answer is "no," list the owners and tract descriptions which have actually been consolidated. (Use reverse side of this form if necessary.) _____

No allowable will be assigned to the well until all interests have been consolidated (by communitization, unitization, forced-pooling, or otherwise) or until a non-standard unit, eliminating such interests, has been approved by the Commission.



CERTIFICATION

I hereby certify that the information contained herein is true and complete to the best of my knowledge and belief.

DeLasso Loos

Name De Lasso Loos

Position District Manager

Company Blackwood & Nichols Co. Ltd

Date January 21, 1980

I hereby certify that the well location shown on this plat was plotted from field notes of actual surveys made by me or under my supervision, and that the same is true and correct to the best of my knowledge and belief.

Date Surveyed Nov. 30, 1979

Registered Professional Engineer and/or Land Surveyor

John A. Kroeger, RLS

Certificate No. 1941

