



POWERS ELEVATION

NSL-1259

OIL WELL ELEVATIONS AND LOCATIONS
CHERRY CREEK PLAZA, SUITE 1201
800 SOUTH CHERRY STREET
DENVER, COLORADO 80222
PHONE NO. 303/321-2217

August 25, 1980

New Mexico Oil & Gas Conservation Commission
Joe D. Ramey, Director
P. O. Box 2088
Santa Fe, New Mexico 87501

RE: Filing Exception to Rule 104F
Supron Energy Corporation
Newsom #10R
SW SW Sec. 20 T26N R8W
1045' FSL & 1215' FWL
San Juan County, New Mexico

NSL-1259
Rule 104 F
Ballard-Pictured
cliffs pool
No offsets
Immediate approval
Use Aug 26 date
Jed
Lund

Dear Mr. Ramey:

Supron Energy Corporation requests an exception to Rule 104F for the above-captioned well location. Enclosed is a location and elevation plat and a topographic map.

The location was staked at the above coordinates because of topographic difficulties.

Supron Energy Corporation has the operating rights to the Pictured Cliffs formation on the surrounding acreage, so no other leaseholders are involved.

Should you require any additional information in order to approve this application, please call.

Thank you.

Sincerely,

POWERS ELEVATION

Connie L. Frailey
Connie Frailey

Enclosures
CF/an

cc: (2) Mexico Oil & Gas Conservation Commission, Aztec, New Mexico
Frances Cooper, Dallas, Texas
Haskell Fleetwood, Supron Energy Corp., Dallas, TX
Rudy Motto, Supron Energy Corp., Farmington, New Mexico

(BLOOMFIELD)

R. 9 W. 25.5000m. E. R. 8 W

R. 9 W.

255000m. F

R. 8 W

70 000 FEET (CENTRAL)

40'

4042000m. N.

2 000 000 FEET
(CENTRAL)

T. 26 N.

T. 25 N.

25'

Dufers
Point

BM

Oil Well 6538

Blanco

Mesa

WASH

BLANCO

A detailed topographic map of the Mt. Qomolangma region. The map shows the mountain range with peaks labeled 'QOM' and 'SON'. The terrain is depicted with contour lines and elevation markers such as 6800, 7110, and 7200. A red line indicates a specific route or boundary, and a blue line shows a river or stream. The map also includes a scale bar and a north arrow.

WELL LOCATION AND ACREAGE DEDICATION PLAT

Form G-10,
Supersedes G-12
Effective 1-1-65

All distances must be from the outer boundaries of the Section

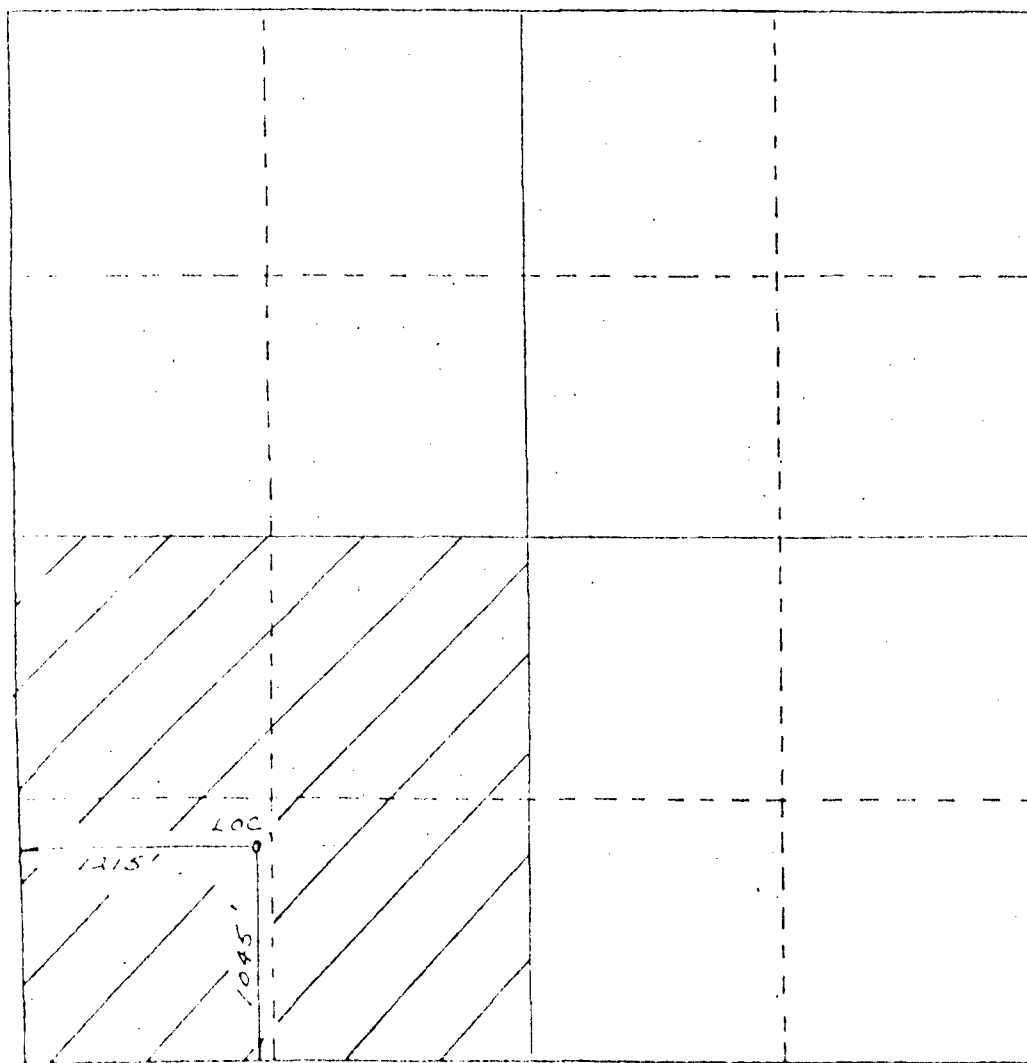
Operator Supron Energy Corporation			Lease No. SF-078433		Well No. #10R
Cont. Letter 19	Section 20	Township 26 North	Range 8 West	County San Juan	
Actual Well Location of Well:					
1095 feet from the South		1215 feet from the West			
Ground Level Elev. 6931'	Producing Formation Pictured Cliffs	Pool BALLARD PICTURED CLIFFS	Dedicated Acreage 160		

- Outline the acreage dedicated to the subject well by colored pencil or hachure marks on the plat below.
- If more than one lease is dedicated to the well, outline each and identify the ownership thereof (both as to working interest and royalty).
- If more than one lease of different ownership is dedicated to the well, have the interests of all owners been consolidated by communitization, unitization, force-pooling, etc?

☐ Yes ☐ No If answer is "yes," type of consolidation _____

If answer is "no," list the owners and tract descriptions which have actually been consolidated. (Use reverse side of this form if necessary.) _____

No allowable will be assigned to the well until all interests have been consolidated (by communitization, unitization, forced-pooling, or otherwise) or until a non-standard unit, eliminating such interests, has been approved by the Commission.



CERTIFICATION

I hereby certify that the information contained herein is true and complete to the best of my knowledge and belief.

George Kapaseotes

Name: **George Kapaseotes**
V. Pres. Powers Elevation

Position
Agent Consultant for

Company
Supron Energy Corporation

Date
5-12-80

I hereby certify that the well location shown on this plat was plotted from field notes of actual surveys made by me or under my supervision, and that the same is true and correct to the best of my knowledge and belief.

Date Set
Richard G. Huddleston
Registered Professional Land Surveyor

68
REGISTERED LAND SURVEYOR

Certificate No.

0 300 600 900 1200 1500 1800 2100 2400 2700 3000 3300 3600 3900 4200 4500 4800 5100 5400 5700 6000 6300 6600 6900 7200 7500 7800 8100 8400 8700 9000 9300 9600 9900 0

File 175K-1259

OIL CONSERVATION COMMISSION
Alfred DISTRICT

OIL CONSERVATION COMMISSION
BOX 2088
SANTA FE, NEW MEXICO

DATE August 3, 1980

RECEIVED
SEP 03 1980
OIL CONSERVATION DIVISION
SANTA FE

RE: Proposed MC _____
Proposed DHC _____
Proposed NSL x _____
Proposed SWD _____
Proposed WFX _____
Proposed PMX _____

Gentlemen:

I have examined the application dated September 3, 1980
for the Superior Energy Corp Newton #10 R M-20-26N-10W
Operator Lease and Well No. Unit, S-T-R

and my recommendations are as follows:

Approve (this is per our telecon last week)
note the section error on letter

Yours very truly,

Frank