



NSL - 1261
Houston Division
Production Operations, U.S. & Canada

P.O. Box 2409
Hobbs, New Mexico 88240
Telephone 505/393-7106

August 26, 1980

Mr. Joe D. Ramey
Energy and Minerals Department
Oil Conservation Division
P.O. Box 2088
Santa Fe, NM 87501

Re: Application of Marathon Oil Company for Approval of an Unorthodox Well Location in a Standard 160 Acre Tubb Gas Proration Unit for the Lou Worthan No. 9 (Unit E, Sec. 11-22S-37E, 1905' FNL and 440' FWL), Lea County, New Mexico.

Dear Mr. Ramey:

Marathon Oil Company requests your administrative approval for an exception to Rule 103-C to permit production of Tubb Gas from an unorthodox well location in a standard 160 Acre Tubb Gas Proration Unit.

Currently, Well No. 9 is producing Tubb Gas as part of the existing 320 Acre Non-Standard Gas Proration Unit on the Lou Worthan Lease. This 320 Acre Non-Standard Gas Proration Unit was established on November 17, 1954 per Administrative Order No. R-545 and was amended on April 27, 1956 per Administrative Order No. R-796 to include well No. 11. Well No. 11 (Unit F, Section 11-22S-37E, 1905' FNL and 2055' FWL) is a standard well location.

Marathon Oil Company now desires to break the current 320 Acre Non-Standard Gas Proration Unit into two 160 Acre Standard Gas Proration Units (see attached plats). The Northwest quarter of section 11 would constitute one 160 Acre Standard Gas Proration Unit and would include both wells 9 and 11. The Northeast quarter of section 11 would constitute the other 160 Acre Standard Gas Proration Unit and would include Well No. 18 (Unit H, Sec. 11-22S-37E, 1905' FNL and 860' FEL) which is to be put on production soon.

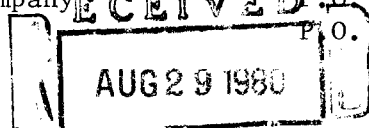
Wells No. 9 and 11 have produced Tubb Gas on this Lease for over 24 years and have produced over 8,000,000 MCF of gas. Because of this long and successful production history, Marathon Oil Company requests your approval for the Non-Standard Location of Well No. 9 so that the Tubb Reserves on this Lease can be continued to be produced by Wells 9 and 11.

All offset operators have been notified by a copy of this application:

Exxon Corporation
Sun Oil Company
Sohio

P.O. Box 1600
P.O. Box 1861
P.O. Box 3000

Midland, Texas 79701
Midland, Texas 79702
Midland, Texas 79702



OIL CONSERVATION DIVISION
SANTA FE

Mr. Joe D. Ramey

-2-

August 26, 1980

Shell
City Services
Mobil
Gulf
Amerada Hess
John Hendrix

P.O. Box 1509
P.O. Box 1919
P.O. Box 1800
P.O. Box 670
P.O. Box 840
1310 N. 18th Ave.

Midland, Texas 79702
Midland, Texas 79702
Hobbs, New Mexico 88240
Hobbs, New Mexico 88240
Seminole, Texas 79360
Eunice, New Mexico 88231

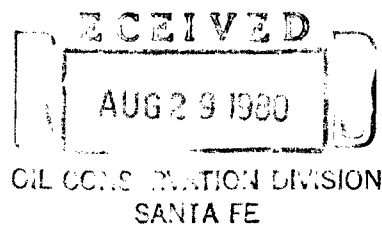
Yours very truly,

Patrick Burton

Patrick N. Burton
Production Engineer

PNB:lbp

Enclosures



All distances must be from the outer boundaries of the Section.

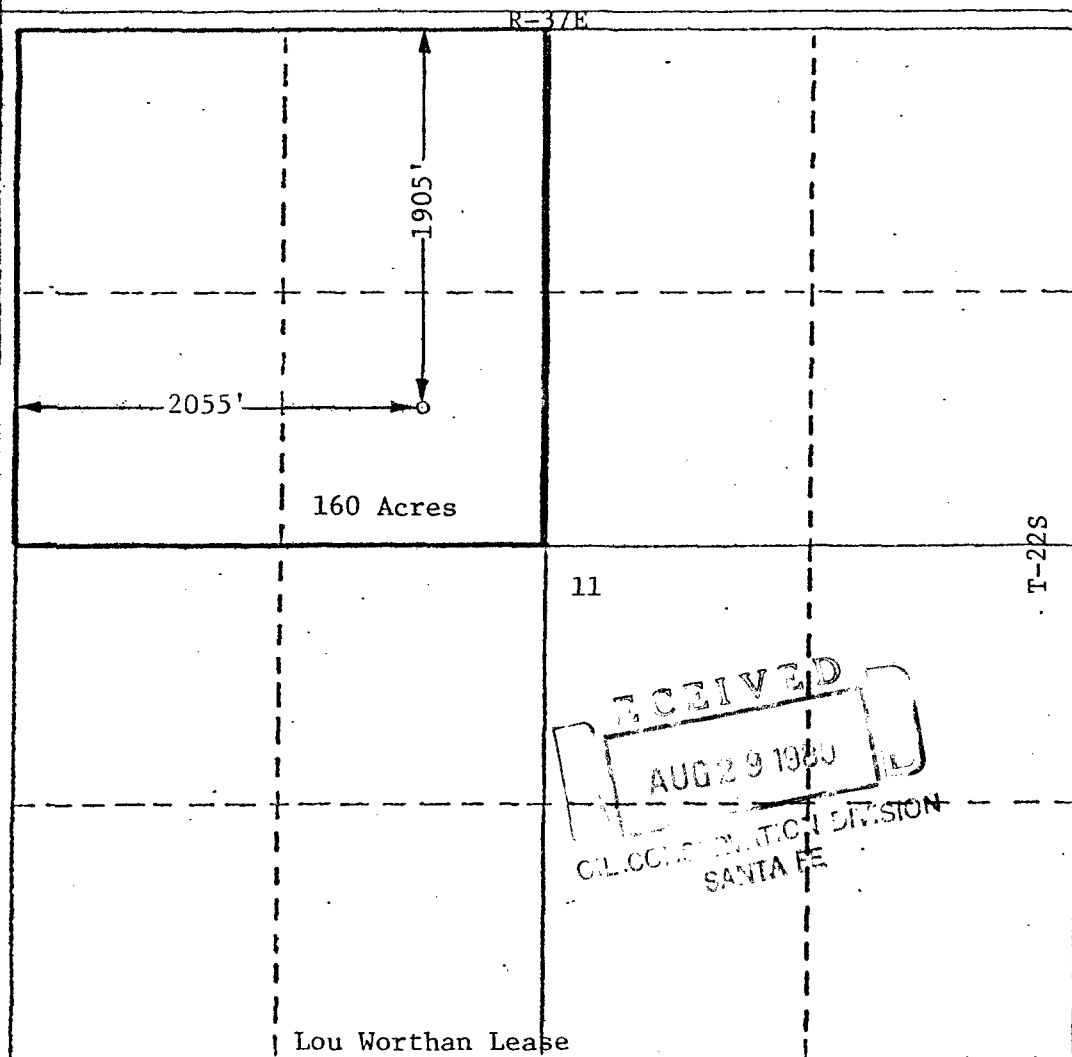
Operator Marathon Oil Company		Lease Lou Worthan		Well No. 11
Unit Letter F	Section 11	Township 22S	Range 37E	County Lea
Actual Footage Location of Well:				
1905 feet from the North line and		2055 feet from the West line		
Ground Level Elev. 3359'	Producing Formation Tubb Gas	Pool Tubb Gas	Dedicated Acreage: 160 Acres	

1. Outline the acreage dedicated to the subject well by colored pencil or hachure marks on the plat below.
2. If more than one lease is dedicated to the well, outline each and identify the ownership thereof (both as to working interest and royalty).
3. If more than one lease of different ownership is dedicated to the well, have the interests of all owners been consolidated by communitization, unitization, force-pooling, etc?

☐ Yes ☐ No If answer is "yes," type of consolidation _____

If answer is "no," list the owners and tract descriptions which have actually been consolidated. (Use reverse side of this form if necessary.) _____

No allowable will be assigned to the well until all interests have been consolidated (by communitization, unitization, forced-pooling, or otherwise) or until a non-standard unit, eliminating such interests, has been approved by the Division.



CERTIFICATION

I hereby certify that the information contained herein is true and complete to the best of my knowledge and belief.

Patrick N. Burton

Name
Patrick N. Burton
Position
Production Engineer
Company
Marathon Oil Company

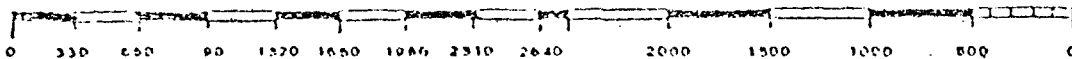
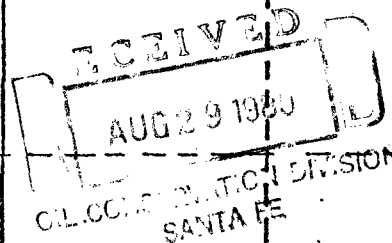
Date
August 21, 1980

I hereby certify that the well location shown on this plat was plotted from field notes of actual surveys made by me or under my supervision, and that the same is true and correct to the best of my knowledge and belief.

Date Surveyed

Registered Professional Engineer and/or Land Surveyor

Certificate No.



OIL CONSERVATION DIVISION

STATE OF NEW MEXICO
ENERGY AND MINERALS DEPARTMENTP. O. BOX 2088
SANTA FE, NEW MEXICO 87501Form C-102
Revised 10-1-78

All distances must be from the outer boundaries of the Section.

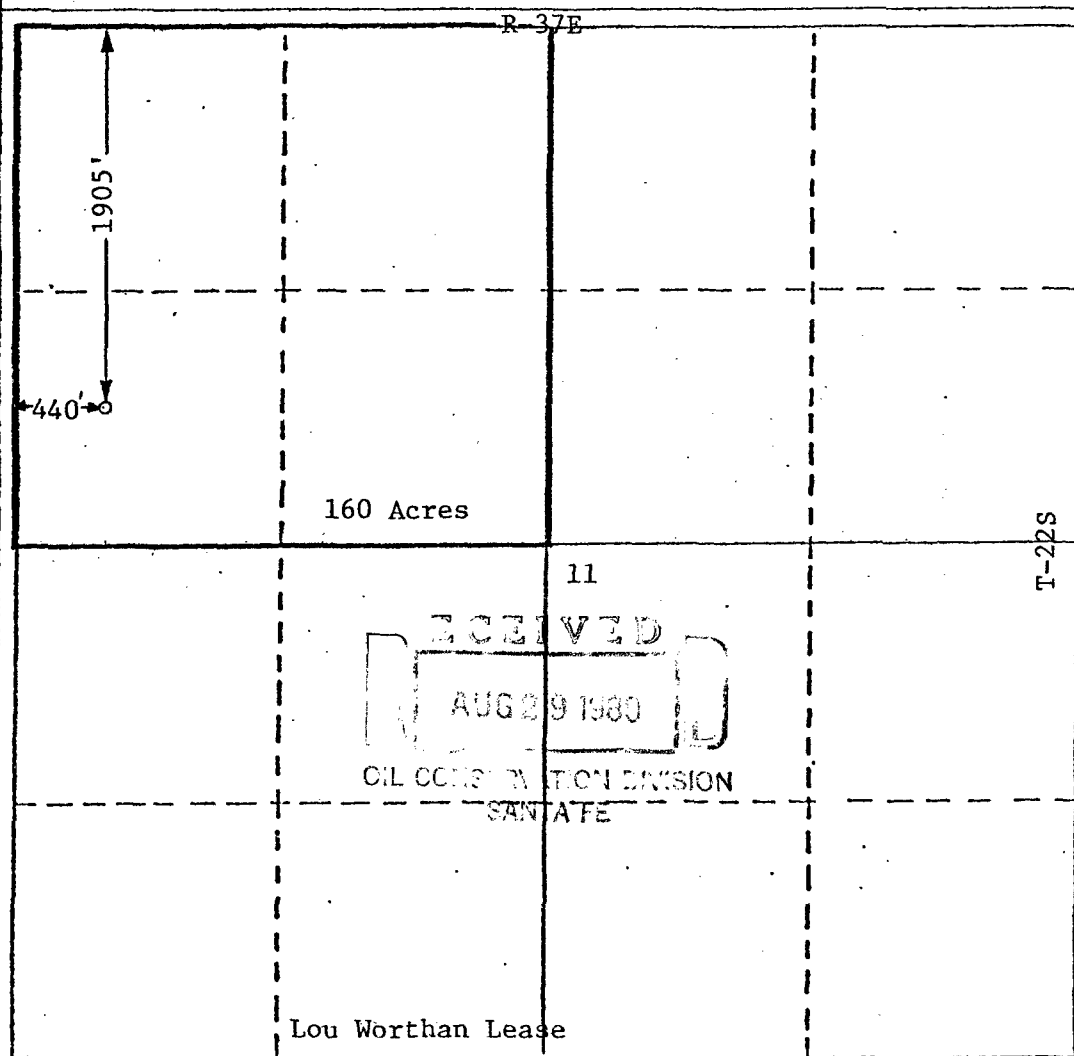
Operator Marathon Oil Company		Lease Lou Worthan		Well No. 9
Unit Letter E	Section 11	Township 22S	Range 37E	County Lea
Actual Postage Location of Well: 1905 feet from the North line and 440 feet from the West line				
Ground Level Elev. 3366'	Producing Formation Tubb Gas		Pool Tubb Gas	Dedicated Acreage: 160 Acres

1. Outline the acreage dedicated to the subject well by colored pencil or hachure marks on the plat below.
2. If more than one lease is dedicated to the well, outline each and identify the ownership thereof (both as to working interest and royalty).
3. If more than one lease of different ownership is dedicated to the well, have the interests of all owners been consolidated by communitization, unitization, force-pooling, etc?

☐ Yes ☐ No If answer is "yes," type of consolidation _____

If answer is "no," list the owners and tract descriptions which have actually been consolidated. (Use reverse side of this form if necessary.) _____

No allowable will be assigned to the well until all interests have been consolidated (by communitization, unitization, forced-pooling, or otherwise) or until a non-standard unit, eliminating such interests, has been approved by the Division.



CERTIFICATION

I hereby certify that the information contained herein is true and complete to the best of my knowledge and belief.

Patrick Burton

Name

Patrick N. Burton

Position

Production Engineer

Company

Marathon Oil Company

Date

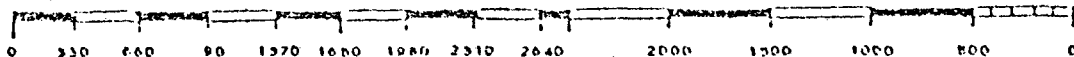
August 21, 1980

I hereby certify that the well location shown on this plat was plotted from field notes of actual surveys made by me or under my supervision, and that the same is true and correct to the best of my knowledge and belief.

Date Surveyed

Registered Professional Engineer
and/or Land Surveyor

Certificate No.



All distances must be from the outer boundaries of the Section.

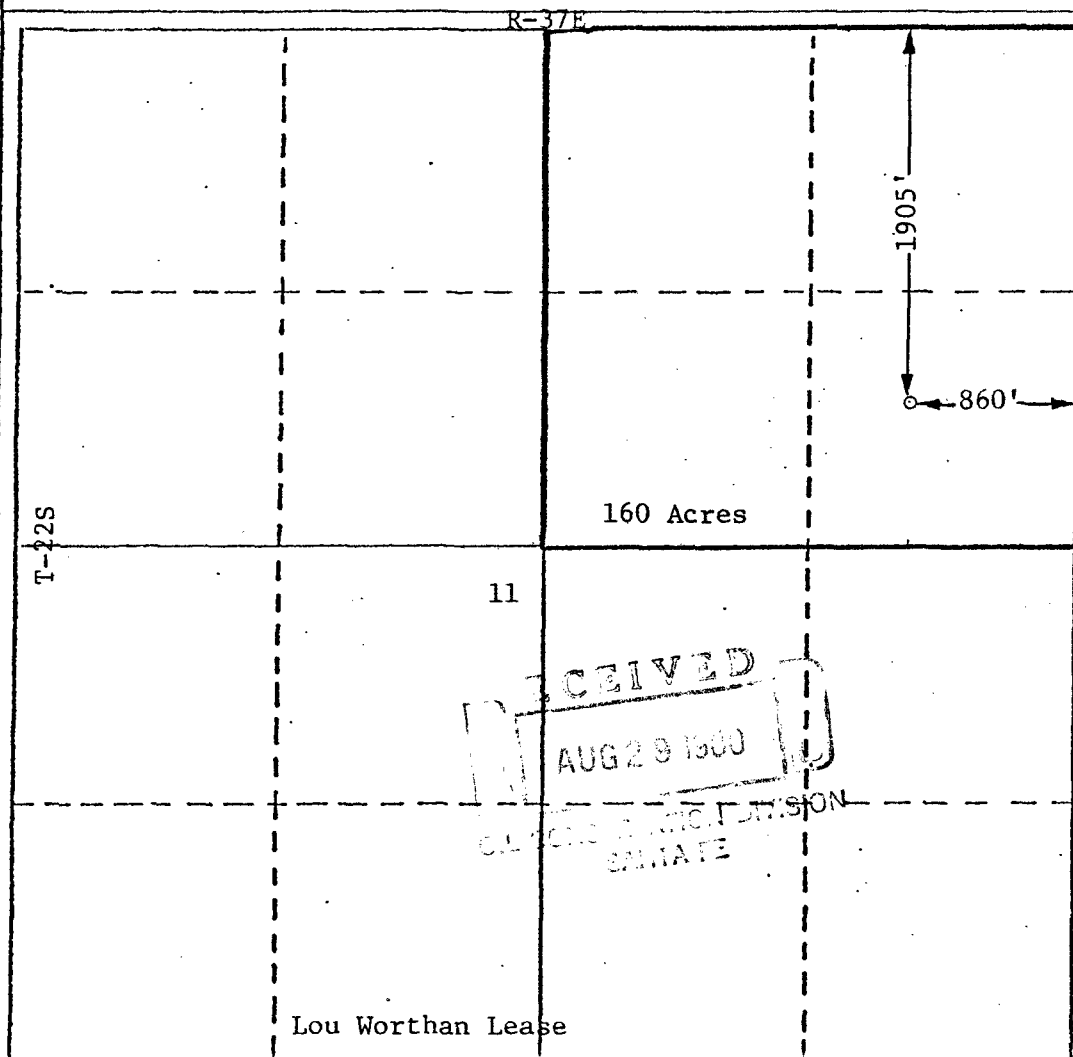
Operator Marathon Oil Company			Lease Lou Worthan			Well No. 18		
Unit Letter H	Section 11	Township 22S	Range 37E	County Lea				
Actual Footage Location of Well:								
1905 feet from the North line and			860 feet from the East line					
Ground Level Elev. 3353'	Producing Formation Tubb Gas		Pool Tubb Gas			Dedicated Acreage: 160 Acres		

1. Outline the acreage dedicated to the subject well by colored pencil or hatchure marks on the plat below.
2. If more than one lease is dedicated to the well, outline each and identify the ownership thereof (both as to working interest and royalty).
3. If more than one lease of different ownership is dedicated to the well, have the interests of all owners been consolidated by communitization, unitization, force-pooling, etc?

☐ Yes ☐ No If answer is "yes," type of consolidation _____

If answer is "no," list the owners and tract descriptions which have actually been consolidated. (Use reverse side of this form if necessary.) _____

No allowable will be assigned to the well until all interests have been consolidated (by communitization, unitization, forced-pooling, or otherwise) or until a non-standard unit, eliminating such interests, has been approved by the Division.



CERTIFICATION

I hereby certify that the information contained herein is true and complete to the best of my knowledge and belief.

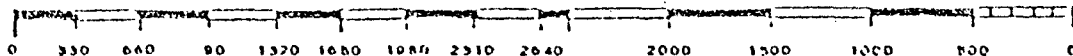
Patrick Burton

Name
Patrick N. Burton
Position
Production Engineer
Company
Marathon Oil Company
Date
August 21, 1980

I hereby certify that the well location shown on this plat was plotted from field notes of actual surveys made by me or under my supervision, and that the same is true and correct to the best of my knowledge and belief.

Date Surveyed
Registered Professional Engineer and/or Land Surveyor

Certificate No.



A diagram showing a central point labeled "Hendrix". Four dotted lines extend from this central point to four peripheral points labeled 4, 5, 6, and 7. An arrow points to point 6.

A scatter plot showing the relationship between the number of children (X-axis) and the number of children who are not in the household (Y-axis). The X-axis ranges from 0 to 4, and the Y-axis ranges from 0 to 4. Data points are labeled with their corresponding number of children in the household. The points are: (0, 0) labeled 29, (1, 0) labeled 22, (1, 1) labeled 25, (2, 0) labeled 27, (2, 1) labeled 24, (2, 2) labeled 34, (3, 0) labeled 30, and (3, 1) labeled 33.

1 2

R.L. Brunson

GULF ✓

MARATHON OIL CO.

New Mexico State

W. Lynch

Annie Christ.

SOHIO

EXXON

Eliott B-12

Perkins/Whit.

SOHIO

SOHIO

T-225

Faves

Amerada-Hess

SHELL ✓

Lou Worthan

MOBIL

Hendrix ✓

13

Elliott B-12-2

13

12

4

A.B. Baker

S. E. Long

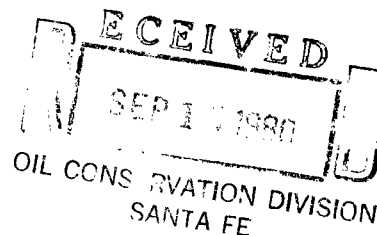
L. Minton

Hendrix, (Cossatot)

Only Drinkard Wells
Are Shown Except On
Marathon's Lou Worthan
Lease.

Scale 1"=1000'

	<u>Well Symbols</u>
○	Well Location
●	S. I. or Abandoned
●	Drinkard Single
●	Paddock Oil
●	Tubb Gas/Drinkard
●	Wantz Gr. Wash/Drinkard
●	Tubb Gas/Blinebry Gas
●	Wantz Abo/Drinkard
●	Tubb Gas/Wantz. Gr. W.
●	Blinebry G./Drinkard



SUN PRODUCTION COMPANY

CAMPBELL CENTRE II, P.O. BOX 2880, DALLAS, TEXAS 75221

September 11, 1980

Mr. Joe D. Ramey
Energy & Minerals Department
Oil Conservation Division
P. O. Box 2088
Santa Fe, NM 87501

Re: Marathon Oil Company
Approval of an Unorthodox Well
Location in a Standard 160
Acre Tubb Gas Proration Unit
Lou Worthan No. 9
Lea County, New Mexico

Dear Sir:

Sun Oil Company has received copy of Marathon Oil Company's application for exception to Rule 103-C concerning the referenced well.

This is to advise that Sun has no objection to Marathon's application and hereby waives notice and hearing.

Yours very truly,

J. T. Power

By: Ann Griffin
Ann Griffin

JTP/ag

cc: Marathon Oil Company
P. O. Box 2409
Hobbs New Mexico 88240