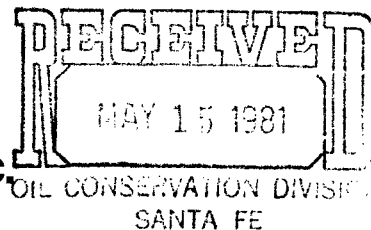


Mobil Producing Texas & New Mexico Inc.



May 11, 1981

NINE GREENWAY PLAZA-SUITE 2700
HOUSTON, TEXAS 77046

New Mexico Energy & Minerals Department (3)
Oil Conservation Division
State Land Office Building
P.O. Box 2088
Santa Fe, New Mexico 87501

*NSC-1367
Rule 2 R5353
No off set
No waiting*

7.01
UNORTHODOX LOCATION
MOBIL PRODUCING TX. & N.M. INC.
LINDRITH B UNIT
WELL #18
CHACON-DAKOTA ASSOCIATED POOL
RIO ARriba COUNTY, NEW MEXICO

Gentlemen:

Mobil Producing TX. & N.M. Inc. (MPTM) respectfully requests permission to drill the subject well at an unorthodox location. The location was moved because the original location was too close to an El Paso Natural Gas pipeline. This proposed well location was moved in an easterly direction which caused it to be less than 330 feet from an inner sub-division line as required by Rule 2 (b) of Order No. R-5353.

Proposed Well #18 will be located as follows:

1735' from the North line and
1090' from the West line of
Sec. 22, T24N, R3W
Rio Arriba County, New Mexico

In support of this request, the following items are submitted:

1. Federal Form 9-331C - "Application to Drill"
2. Form C-102 - "Well Location and Acreage Dedication Plat"
3. Plat showing offset lease owners and topography

MPTM respectfully requests that this unorthodox well location be approved

Mobil

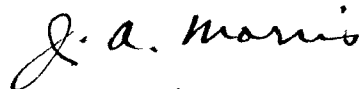
New Mexico Energy & Minerals

-2-

May 11, 1981

administratively as provided for in Rule 2(c) of Order No. R-5353.
The land on all sides of the 160-acre drilling unit assigned to Well
. #18 is leased by MPTM.

Yours very truly,



J.A. Morris

Regulatory Engineering Supervisor

LSHall/jrs
Attachments

cc: District Supervisor - Aztec
USGA - Farmington

UNITED STATES
DEPARTMENT OF THE INTERIOR
GEOLOGICAL SURVEYPERMIT TO DRILL
(Other instructions on
reverse side)

MAY 15 1981

Form approved.
Budget Bureau No. 42-R1425.

APPLICATION FOR PERMIT TO DRILL, DEEPEN, OR PLUG BACK

1a. TYPE OF WORK

DRILL ☒DEEPEN ☐PLUG BACK ☐

b. TYPE OF WELL

OIL
WELL ☒GAS
WELL ☐

OTHER

SINGLE
ZONE ☒MULTIPLE
ZONE ☐

2. NAME OF OPERATOR

Mobil Producing TX. & N.M. Inc.

3. ADDRESS OF OPERATOR

Nine Greenway Plaza, Suite 2700, Houston, TX 77046

4. LOCATION OF WELL (Report location clearly and in accordance with any State requirements.)*

At surface 1735' FNL & 1090' FWL, Sec. 22, T24N, R3W

At proposed prod. zone

Same as surface

14. DISTANCE IN MILES AND DIRECTION FROM NEAREST TOWN OR POST OFFICE*

50 miles Southeast from Farmington

15. DISTANCE FROM PROPOSED* 6364'

LOCATION TO NEAREST

PROPERTY OR LEASE LINE, FT.

(Also to nearest drg. unit line, if any)

(904')

16. NO. OF ACRES IN LEASE

26,365.43

17. NO. OF ACRES ASSIGNED

TO THIS WELL

160

18. DISTANCE FROM PROPOSED LOCATION*

2103' NW

TO NEAREST WELL, DRILLING, COMPLETED,
OR APPLIED FOR, ON THIS LEASE, FT.

to well #16

19. PROPOSED DEPTH

8000'

20. ROTARY OR CABLE TOOLS

Rotary

21. ELEVATIONS (Show whether DF, RT, GR, etc.)

7096' - GR

22. APPROX. DATE WORK WILL START*

May 15, 1981

23.

PROPOSED CASING AND CEMENTING PROGRAM

SIZE OF HOLE	SIZE OF CASING	WEIGHT PER FOOT	SETTING DEPTH	QUANTITY OF CEMENT
17-1/2"	12-3/4"*	45.51# H-40	0 - 400'	1. Circulate to surf. w/300 sx.
11"	8-5/8"*	24# S-80	0 - 3100'	2. Circulate to surf. w/900 sx
		28# S-80	3100 - 3900'	
7-7/8"	5-1/2"*	15.5# K-55	0 - 7000'	3. Circulate to Approx. 3800'
		17# K-55	7000 - 7700'	w/950 sx in two stages

*All casing will be new.

CEMENTING PROGRAM

1. Class B with 2% CaCl₂.

2. Lite weight & Class B

3. Lite weight & Class B

MUD PROGRAM

Depth	Type of Mud	Weight	Viscosity	ph	Water Loss
0-400'	Spud Mud	9.0-9.2	35-45	9+	Nc
400 - TD	Fresh Water Gel	8.8	35-40	9+	10 cc's

BLOWOUT PREVENTER PROGRAM

See Attachment

LOGGING PROGRAM: Type

IES

FDL/CNL

Depth

Surf. to TD

Surf. to TD

IN ABOVE SPACE DESCRIBE PROPOSED PROGRAM: If proposal is to deepen or plug back, give data on present productive zone and proposed new productive zone. If proposal is to drill or deepen directionally, give pertinent data on subsurface locations and measured and true vertical depths. Give blowout preventer program, if any.

24.

SIGNED

A. J. Morris

J.A. Morris

TITLE

Regulatory Engineering
Supervisor

DATE

3-16-81

(This space for Federal or State office use)

PERMIT NO.

APPROVAL DATE

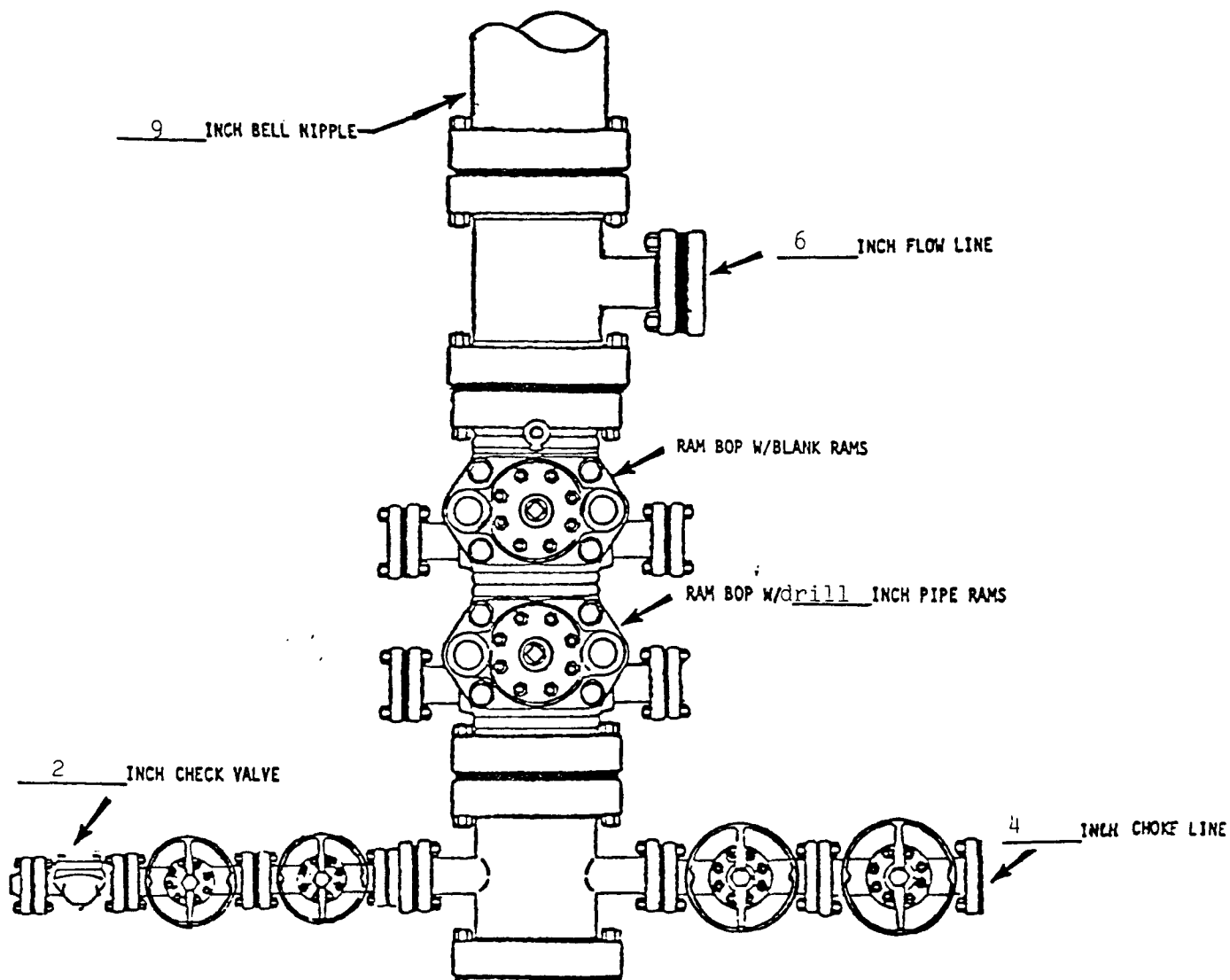
APPROVED BY

TITLE

DATE

CONDITIONS OF APPROVAL, IF ANY:

*See Instructions On Reverse Side

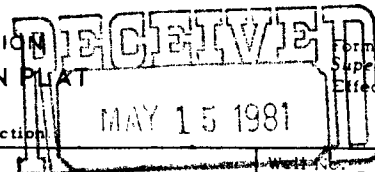


BOP rams will be actuated on each trip of drill pipe and will be tested before drilling the plug on each casing string.

*NOTE: ALL VALVES ARE METAL-TO-METAL SEAL AND FLANGED. ALL COMPONENTS MUST MEET ABOVE MINIMUM PRESSURE RATINGS. ALL COMPONENTS TO BE TESTED TO RATED PRESSURE AFTER ASSEMBLY AND BEFORE FURTHER DOWNHOLE OPERATIONS MAY BE CONDUCTED.

Mobil Producing Texas & New Mexico Inc. Houston, Texas		Scale
Well # <u>18</u> <u>LINDRITH B UNIT</u> (Lease)		Date
Rio Arriba County, NM State Blowout Preventer Assembly (9 IN. 3000 PSI WP*)		Drawn
		Checked
		Approved
		Revised

NEW MEXICO OIL CONSERVATION COMMISSION
WELL LOCATION AND ACREAGE DEDICATION PLAT



Form C-102
Supersedes C-128
Effective 1-1-65

All distances must be from the outer boundaries of the Section

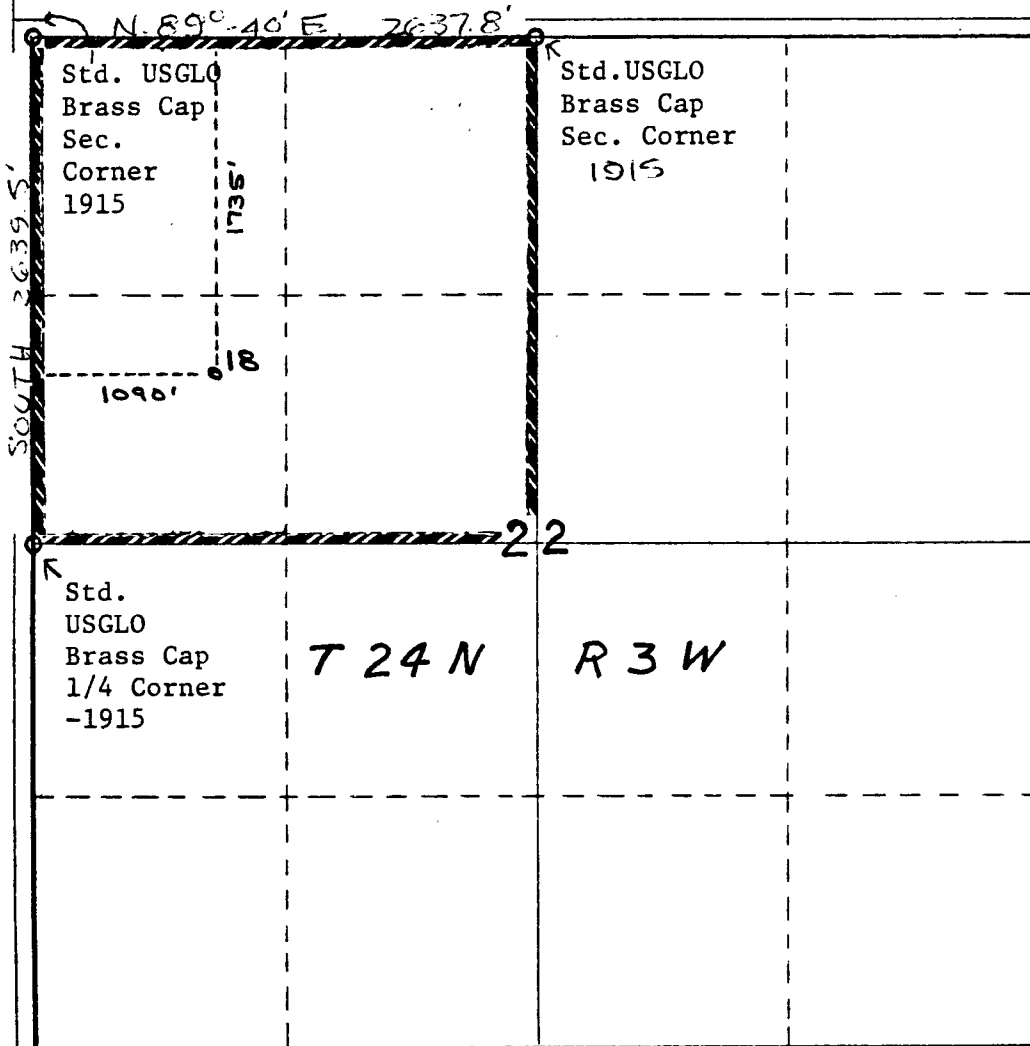
Operator Mobil Producing TX. & N.M. Inc.			Lease Lindrith B Unit		
Unit Letter E	Section 22	Township 24N	Range 3W	County SANTA FE	
Actual Footage Location of Well: 1735 feet from the North line and 1090 feet from the West line					
Ground Level Elev. 7096'	Producing Formation Dakota	Pool Chacon-Dakota Associated	Dedicated Acreage: 160 Acres		

1. Outline the acreage dedicated to the subject well by colored pencil or hatchure marks on the plat below.
2. If more than one lease is dedicated to the well, outline each and identify the ownership thereof (both as to working interest and royalty).
3. If more than one lease of different ownership is dedicated to the well, have the interests of all owners been consolidated by communitization, unitization, force-pooling, etc?

☒ Yes ☐ No If answer is "yes," type of consolidation Unitization

If answer is "no," list the owners and tract descriptions which have actually been consolidated. (Use reverse side of this form if necessary.)

No allowable will be assigned to the well until all interests have been consolidated (by communitization, unitization, forced-pooling, or otherwise) or until a non-standard unit, eliminating such interests, has been approved by the Commission



CERTIFICATION

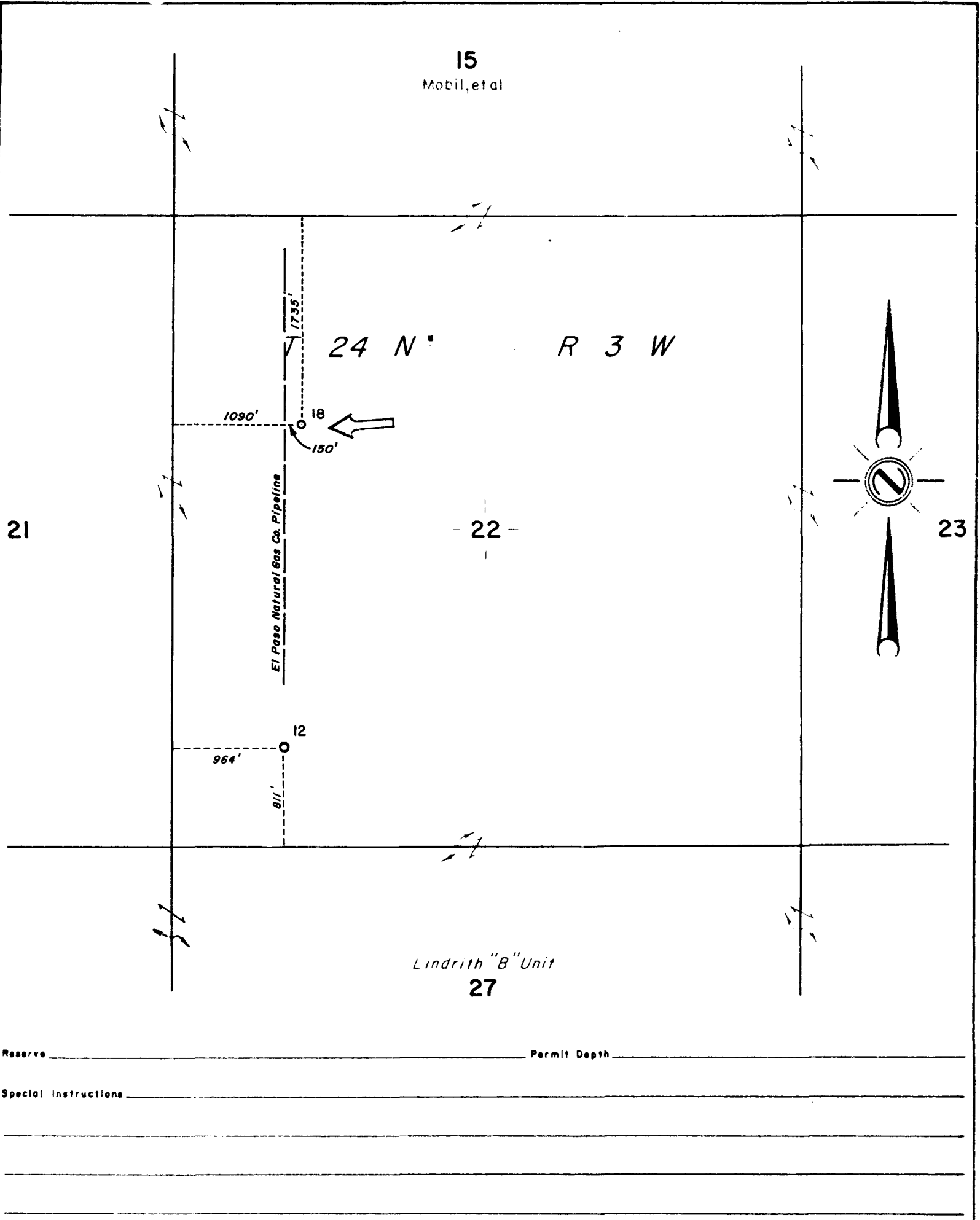
I hereby certify that the information contained herein is true and complete to the best of my knowledge and belief.

Name A.D. Bond
 Position Regulatory Engineering Coordinator II
 Company Mobil Producing TX. & N.M. Inc.

Date 3-16-81
 Registered Professional Engineer and/or Land Surveyor
 H.A. Carson, Jr.
 February 13, 1981

Date Surveyed
 Registered Professional Engineer and/or Land Surveyor
 H.A. Carson, Jr.
 Certificate No. 5063

0 330 660 990 1320 1650 1980 2310 2640 2970 3300 3630 3960 4290 4620 4950 5280 5610 5940 6270 6600



Reserve _____ Permit Depth _____

Special Instructions _____

THE STATE OF TEXAS
COUNTY OF HARRIS

I hereby certify that this plat truly represents conditions as they actually exist on this lease, that said plat which is drawn to the scale indicated hereon, is to the best of my knowledge true and correct, that it accurately shows said lease with all wells on same, that number and locations of said wells are as indicated hereon; and that this plat correctly reflects all pertinent and required data.

AD Bond

"Partial Plat"

Mobil Producing Texas & New Mexico Inc.
Houston, Texas

LEASE Lindrith "B" Unit
WELL NO. 18 DATE 5-11- 1981
LEASE NO. _____
TOTAL ACRES IN LEASE 26,365.43 ACRES COVERED BY PLAT _____
DESCRIPTION Section 22, T24N-R3W of 26,365.43
Acre Unit
50 Miles SE of Farmington
Rio Arriba County, New Mexico

DRAWN T Ray DATE 5-20-80 FIELD Chacon - Dakota
SCALE 1"=1000' FILE NO. 20