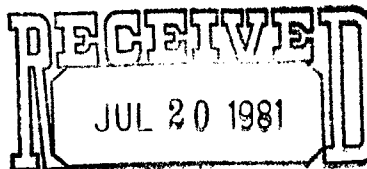




POWERS ELEVATION



OIL CONSERVATION DIVISION
SANTA FE

OIL WELL ELEVATIONS AND LOCATIONS
CHERRY CREEK PLAZA, SUITE 1201
600 SOUTH CHERRY STREET
DENVER, COLORADO 80222
PHONE NO. 303/321-2217

July 17, 1981

Mr. R. L. Stamets
Oil Conservation Commission
P.O. Box 2088
Santa Fe, New Mexico 87501

RE: Request spacing exception for:
Supron Energy Corporation
Foster #7
SW NE Sec. 4 T26N R8W
1980' FNL & 2210' FEL
San Juan County, New Mexico

Dear Mr. Stamets:

On behalf of Supron Energy Corporation, Powers Elevation Company hereby requests a spacing exception for the above location due to topographical problems. The joint BLM/USGS on-site inspection was held July 7, 1981 and the location was approved as staked (see plats attached).

Enclosed are copies of letters sent certified mail to all offset operators giving notice of the intent of Supron Energy Corporation.

Please notify Powers Elevation of the decision made on this request.

Sincerely yours,

POWERS ELEVATION

Connie L. Frailey

Connie L. Frailey
Vice President, Environmental Services

CLF:slk
Enclosure

cc: Herman Wallis
Steve Connor

*NSL-1397
Ballard Pictured Cl.
Rule 104 F
Aug 9, 1981*

RECEIVED
Plat Form C-102
Supersedes C-128
JUL 20 1981
Effective 1-1-65

OIL CONSERVATION DIVISION
SANTA FEster #7

1. Outline the acreage dedicated to the subject well by colored pencil or hatchure marks on the plat below.
2. If more than one lease is dedicated to the well, outline each and identify the ownership thereof (both as to working interest and royalty).
3. If more than one lease of different ownership is dedicated to the well, have the interests of all owners been consolidated by communitization, unitization, force-pooling, etc?

☐ Yes ☐ No If answer is "yes," type of consolidation _____

If answer is "no," list the owners and tract descriptions which have actually been consolidated. (Use reverse side of this form if necessary.) _____

No allowable will be assigned to the well until all interests have been consolidated (by communitization, unitization, forced-pooling, or otherwise) or until a non-standard unit, eliminating such interests, has been approved by the Commission.

<p align="center">CERTIFICATION</p> <p>I hereby certify that the information contained herein is true and complete to the best of my knowledge and belief.</p>	
<p>Name <u>George Lapaseotes</u></p>	<p><u>President, Powers Elevation</u></p>
<p>Position</p>	<p><u>Agent Consultant for</u></p>
<p>Company</p>	<p><u>Supron Energy Corp.</u></p>
<p>Date</p>	<p><u>July 15, 1981</u></p>
<p>I hereby certify that the well location shown on this plot was plotted from field notes of actual surveys made by me or under my supervision, and that the same is true and correct to the best of my knowledge and belief.</p>	
<p>Date Surveyed <u>25 JAN 1982</u></p>	<p><u>By [Signature]</u></p>
<p>Regts. of Prof'l Engineering and of Land Surveyor <u>244</u></p>	<p><u>[Signature]</u></p>
<p>Certificate No. <u>244</u></p>	<p><u>244</u></p>



POWERS ELEVATION

OIL WELL ELEVATIONS AND LOCATIONS
CHERRY CREEK PLAZA, SUITE 1201
800 SOUTH CHERRY STREET
DENVER, COLORADO 80222
PHONE NO. 303/321-2217

July 28, 1981



Mr. R.L. Stamets
Oil Conservation Commission
P.O. Box 2088
Santa Fe, New Mexico 87501

RE: Request Spacing Exception for:
Supron Energy Corporation
Foster #7
SW NE Sec. 4 T26N R8W
1980' FNL & 2210' FEL
San Juan County, New Mexico

Dear Mr. Stamets,

Per your request of July 22, 1981, enclosed is a plat showing ownership of the offsetting leases.

Because this terrain is very rough and because portions of the NE $\frac{1}{4}$ of Sec. 4 contain the Blanco Mesa which has a vertical relief of 500' to the West, this unorthodox location was necessary (see attached topographic map).

If anything else is required, please advise.

Sincerely yours,

POWERS ELEVATION

Connie L. Frailey

Connie L. Frailey
Vice President, Environmental Services


CLF/mf
Enclosure

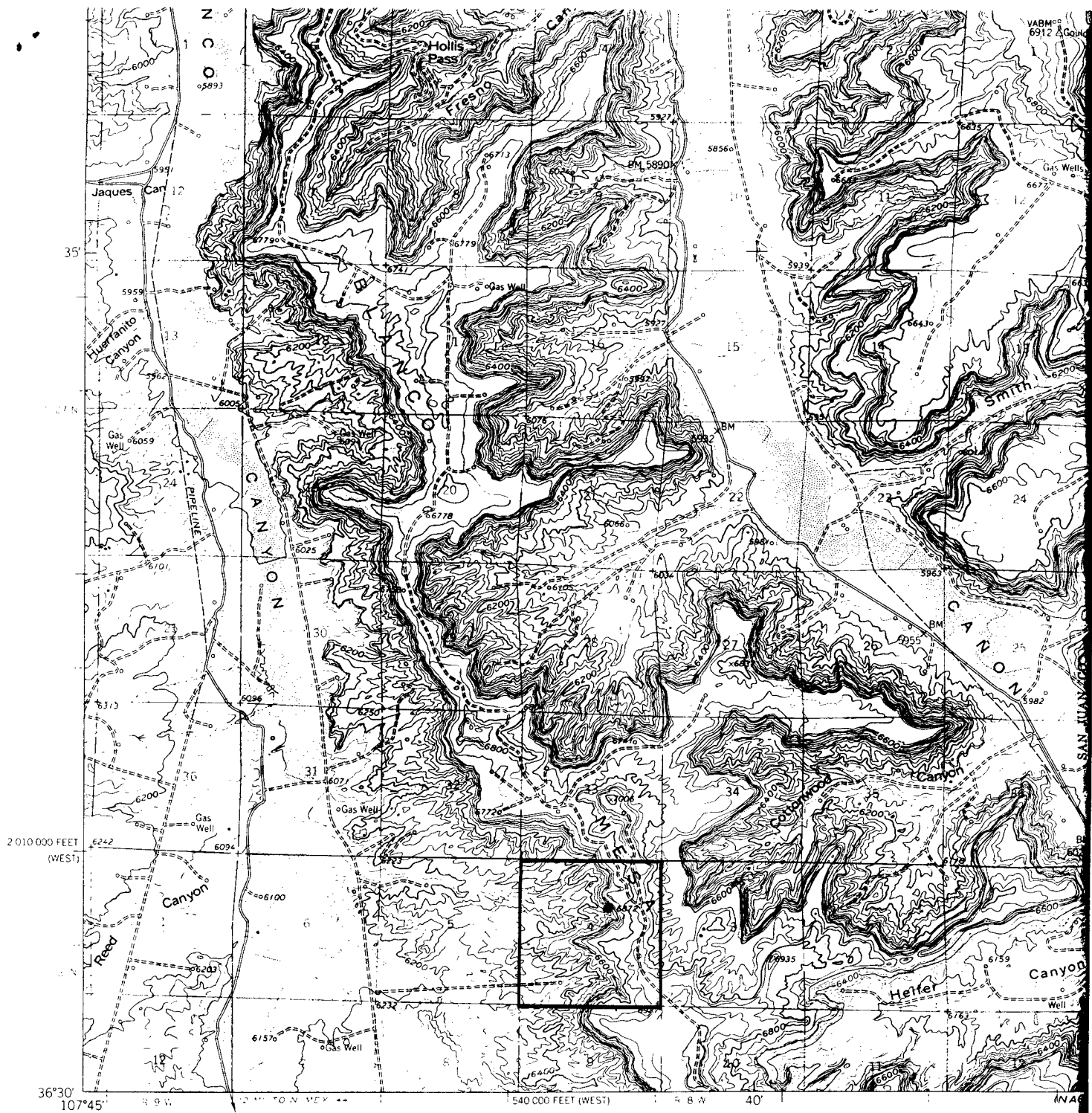
cc: Herman Wallis, Supron Energy Corporation

RECEIVED
JUL 30 1981
OIL CONSERVATION DIVISION
SANTA FE

Plat illustrating ownership of offsetting leases for the following well:

Supron Energy Corporation
Foster #7
SW NE Sec. 4 T26N R8W
1980' FNL & 2210' FEL
San Juan County, New Mexico

33	El Paso Natural Gas Company	Southland Royalty Co.	34
Supron	 Foster #7	Supron	
4	Supron	Supron	3
Supron	Supron	Supron	

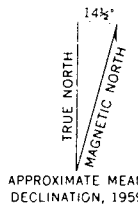


Mapped, edited, and published by the Geological Survey

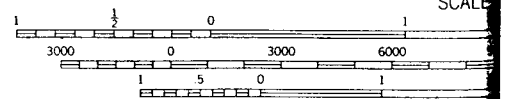
Control by USGS and USC&GS

Topography by photogrammetric methods from aerial photographs taken 1955 Field checked 1959

Polyconic projection. 1927 North American datum
10,000 foot grid based on New Mexico coordinate system,
west and central zones
1000-meter Universal Transverse Mercator grid ticks,
zone 13, shown in blue



APPROXIMATE MEAN DECLINATION, 1959



CONTOUR INTERVAL
DATUM IS N

THIS MAP COMPLIES WITH NATIONAL MAP ACT
FOR SALE BY U.S. GEOLOGICAL SURVEY, DEPARTMENT OF THE INTERIOR
A FOLDER DESCRIBING TOPOGRAPHIC MAPS



ENERGY AND MINERALS DEPARTMENT

OIL CONSERVATION DIVISION
AZTEC DISTRICT OFFICE

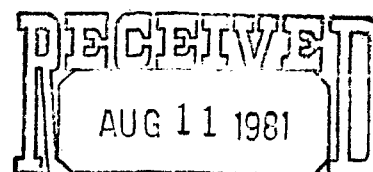
1000 RIO BRAZOS ROAD
AZTEC, NEW MEXICO 87411
(505) 334-6178

OIL CONSERVATION DIVISION
BOX 2088
SANTA FE, NEW MEXICO 87501

DATE Aug 7 1981

RE: Proposed MC _____
Proposed DHC _____
Proposed NSL / _____
Proposed SWD _____
Proposed WFX _____
Proposed PMX _____

1397



OIL CONSERVATION DIVISION
SANTA FE

Gentlemen:

I have examined the application dated July 20, 1981
for the Sugar Energy Corp Foster #7 G-4-26N-3W
Operator Lease and Well No. Unit, S-T-R

and my recommendations are as follows:

Approve

Yours truly,

Jeff A. Edmister
JE



STATE OF NEW MEXICO
ENERGY AND MINERALS DEPARTMENT
OIL CONSERVATION DIVISION

July 22, 1981

BRUCE KING
GOVERNOR

LARRY KEHOE
SECRETARY

POST OFFICE BOX 2088
STATE LAND OFFICE BUILDING
SANTA FE, NEW MEXICO 87501
(505) 827-2434

Powers Elevation
Cherry Creek Plaza, Suite 1201
600 South Cherry Street
Denver, Colorado 80222

Re: Application for Non-Standard
Location: Supron Energy Corp. Foster
Well No. 7, Sec. 4, T-26-N, R-8-W,
San Juan County, New Mexico

We may not process the subject application for non-standard location until the required information or plats checked below (is)(are) submitted.

☒ A plat must be submitted clearly showing the ownership of the offsetting leases.

☐ A statement must be submitted that offset owners have been notified of the application by certified mail.

☒ A plat must be submitted fully identifying the topography necessitating the non-standard location.

☐ Other:

Very truly yours

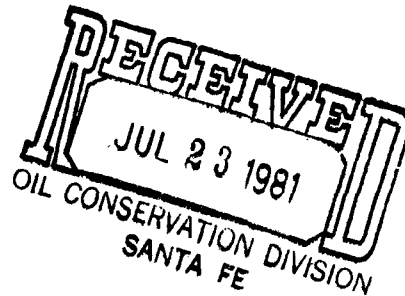
R. L. STAMETS
Technical Support Chief

RLS/dr



POWERS ELEVATION

OIL WELL ELEVATIONS AND LOCATIONS
CHERRY CREEK PLAZA, SUITE 1201
800 SOUTH CHERRY STREET
DENVER, COLORADO 80222
PHONE NO. 303/321-2217



July 17, 1981

Larry Van Ryan
Southland Royalty Company
P.O. Drawer 520
Farmington, New Mexico 87401

RE: Supron Energy Corporation
Foster #7
SW NE Sec. 4 T26N R8W
1980' FNL & 2210' FEL
San Juan County, New Mexico

Dear Mr. Van Ryan:

This is to inform you that Supron Energy Corporation intends to drill the above-referenced location. Please notify as soon as possible the District III New Mexico Oil Conservation Commission of your consent or objection to the drilling of this location.

A request for spacing exception has been applied for with the New Mexico Oil Conservation Commission.

Respectfully,

POWERS ELEVATION

Connie L. Frailey
Vice President, Environmental Services

CLF:slk

cc: Mr. Frank Chavez, New Mexico Oil Conservation Commission, Aztec, New Mexico
Mr. Steve Connor, Supron Energy Corporation c/o John H. Hill et al
Mr. Joe D. Ramey, New Mexico Oil Conservation Commission, Santa Fe, New Mexico
Mr. Herman Wallis, John H. Hill et al



POWERS ELEVATION

OIL WELL ELEVATIONS AND LOCATIONS
CHERRY CREEK PLAZA, SUITE 1201
800 SOUTH CHERRY STREET
DENVER, COLORADO 80222
PHONE NO. 303/321-2217

July 17, 1981

Tenneco Oil Company
P.O. Box 3249
Englewood, Colorado 80155

RE: Supron Energy Corporation
Foster #7
SW NE Sec. 4 T26N R8W
1980' FNL & 2210' FEL
San Juan County, New Mexico

Gentlemen:

This is to inform you that Supron Energy Corporation intends to drill the above-referenced location. Please notify as soon as possible the District III New Mexico Oil Conservation Commission of your consent or objection to the drilling of this location.

A request for spacing exception has been applied for with the New Mexico Oil Conservation Commission.

Sincerely yours,

POWERS ELEVATION

Connie L. Frailey

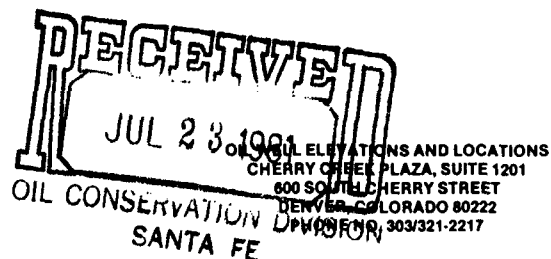
Connie L. Frailey
Vice President, Environmental Services

CLF:slk

cc: Mr. Frank Chavez, New Mexico Oil Conservation Commission, Aztec, New Mexico
Mr. Steve Connor, Supron Energy Corporation c/o John H. Hill et al
✓ Mr. Joe D. Ramey, New Mexico Oil Conservation Commission, Santa Fe, New Mexico
Mr. Herman Wallis, John H. Hill et al



POWERS ELEVATION



July 17, 1981

El Paso Natural Gas Company
P.O. Box 990
Farmington, New Mexico 87401

RE: Supron Energy Corporation
Foster #7
SW NE Sec. 4 T26N R8W
1980' FNL & 2210' FEL
San Juan County, New Mexico

Gentlemen:

This is to inform you that Supron Energy Corporation intends to drill the above-referenced location. Please notify as soon as possible the District III New Mexico Oil Conservation Commission of your consent or objection to the drilling of this location.

A request for spacing exception has been applied for with the New Mexico Oil Conservation Commission.

Sincerely yours,

POWERS ELEVATION

Connie L. Frailey

Connie L. Frailey
Vice President, Environmental Services

CLF:slk

cc: Mr. Frank Chavez, New Mexico Oil Conservation Commission, Aztec, New Mexico
Mr. Steve Connor, Supron Energy Corporation c/o John H. Hill et al
Mr. Joe D. Ramey, New Mexico Oil Conservation Commission, Santa Fe, New Mexico
Mr. Herman Wallis, John H. Hill et al